



Full wwPDB X-ray Structure Validation Report ⓘ

Aug 16, 2023 – 12:14 AM EDT

PDB ID : 1TV6
Title : HIV-1 Reverse Transcriptase Complexed with CP-94,707
Authors : Pata, J.D.; Stirtan, W.G.; Goldstein, S.W.; Steitz, T.A.
Deposited on : 2004-06-28
Resolution : 2.80 Å(reported)

This is a Full wwPDB X-ray Structure Validation Report for a publicly released PDB entry.

We welcome your comments at validation@mail.wwpdb.org

A user guide is available at

<https://www.wwpdb.org/validation/2017/XrayValidationReportHelp>

with specific help available everywhere you see the ⓘ symbol.

The types of validation reports are described at

<http://www.wwpdb.org/validation/2017/FAQs#types>.

The following versions of software and data (see [references ⓘ](#)) were used in the production of this report:

MolProbity : 4.02b-467
Mogul : 1.8.5 (274361), CSD as541be (2020)
Xtriage (Phenix) : 1.13
EDS : 2.35
buster-report : 1.1.7 (2018)
Percentile statistics : 20191225.v01 (using entries in the PDB archive December 25th 2019)
Refmac : 5.8.0158
CCP4 : 7.0.044 (Gargrove)
Ideal geometry (proteins) : Engh & Huber (2001)
Ideal geometry (DNA, RNA) : Parkinson et al. (1996)
Validation Pipeline (wwPDB-VP) : 2.35

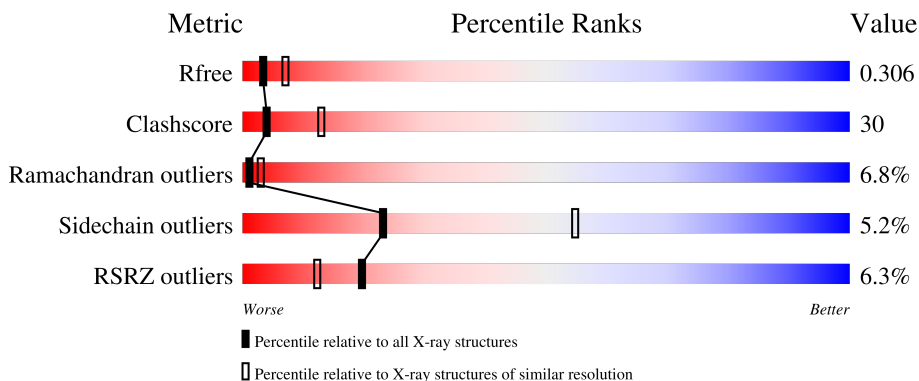
1 Overall quality at a glance

The following experimental techniques were used to determine the structure:

X-RAY DIFFRACTION

The reported resolution of this entry is 2.80 Å.

Percentile scores (ranging between 0-100) for global validation metrics of the entry are shown in the following graphic. The table shows the number of entries on which the scores are based.



Metric	Whole archive (#Entries)	Similar resolution (#Entries, resolution range(Å))
R_{free}	130704	3140 (2.80-2.80)
Clashscore	141614	3569 (2.80-2.80)
Ramachandran outliers	138981	3498 (2.80-2.80)
Sidechain outliers	138945	3500 (2.80-2.80)
RSRZ outliers	127900	3078 (2.80-2.80)

The table below summarises the geometric issues observed across the polymeric chains and their fit to the electron density. The red, orange, yellow and green segments of the lower bar indicate the fraction of residues that contain outliers for ≥ 3 , 2, 1 and 0 types of geometric quality criteria respectively. A grey segment represents the fraction of residues that are not modelled. The numeric value for each fraction is indicated below the corresponding segment, with a dot representing fractions $\leq 5\%$. The upper red bar (where present) indicates the fraction of residues that have poor fit to the electron density. The numeric value is given above the bar.

Mol	Chain	Length	Quality of chain
1	A	560	
2	B	440	

2 Entry composition [i](#)

There are 3 unique types of molecules in this entry. The entry contains 7786 atoms, of which 0 are hydrogens and 0 are deuteriums.

In the tables below, the ZeroOcc column contains the number of atoms modelled with zero occupancy, the AltConf column contains the number of residues with at least one atom in alternate conformation and the Trace column contains the number of residues modelled with at most 2 atoms.

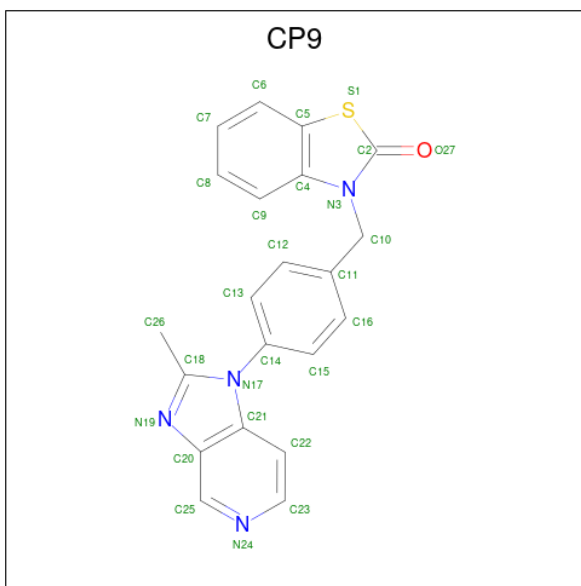
- Molecule 1 is a protein called reverse transcriptase p66 subunit.

Mol	Chain	Residues	Atoms					ZeroOcc	AltConf	Trace
			Total	C	N	O	S			
1	A	535	4367	2832	722	805	8	0	0	0

- Molecule 2 is a protein called reverse transcriptase p51 subunit.

Mol	Chain	Residues	Atoms					ZeroOcc	AltConf	Trace
			Total	C	N	O	S			
2	B	411	3392	2205	562	618	7	0	0	0

- Molecule 3 is 3-[4-(2-METHYL-IMIDAZO[4,5-C]PYRIDIN-1-YL)BENZYL]-3H-BENZOTHIADAZOL-2-ONE (three-letter code: CP9) (formula: C₂₁H₁₆N₄OS).

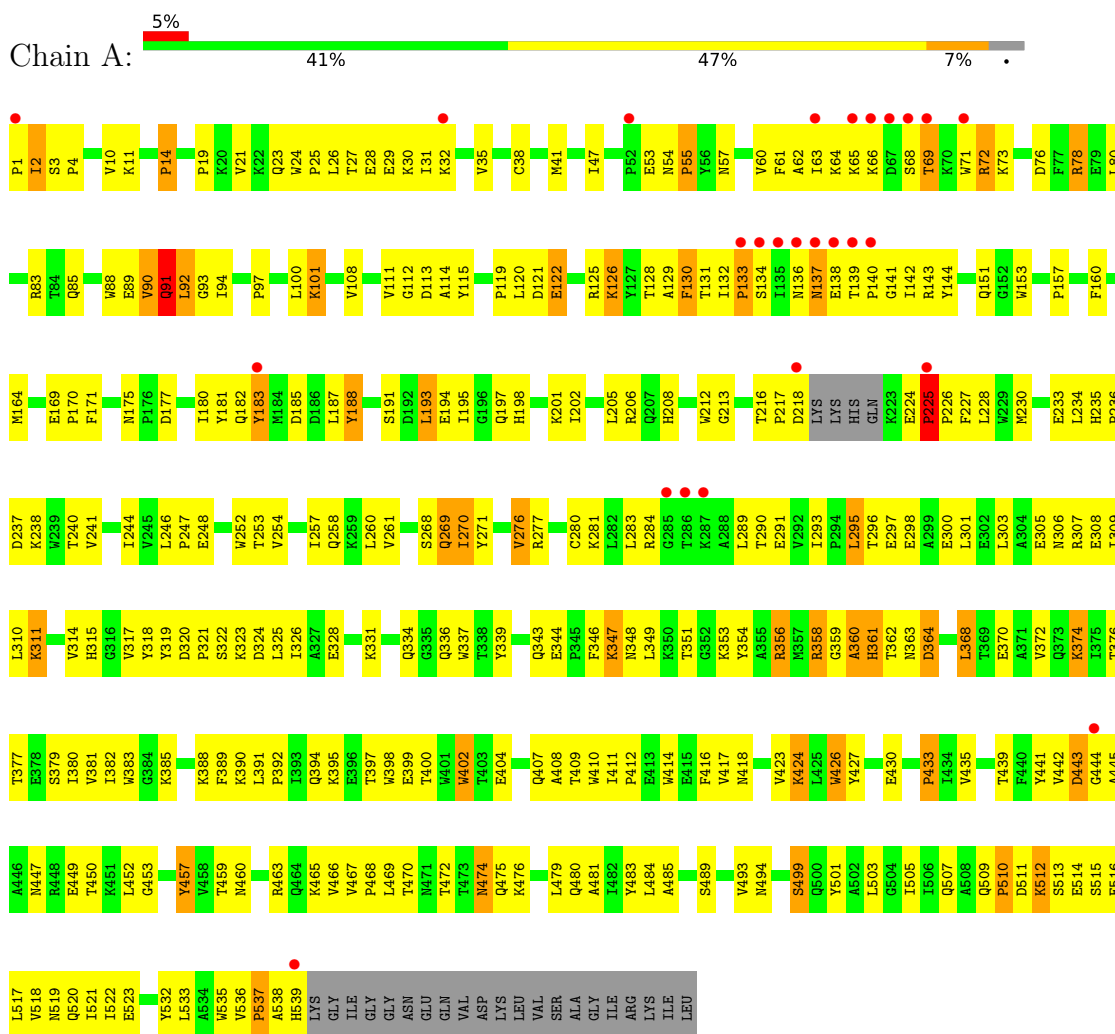


Mol	Chain	Residues	Atoms					ZeroOcc	AltConf
			Total	C	N	O	S		
3	A	1	27	21	4	1	1	0	0

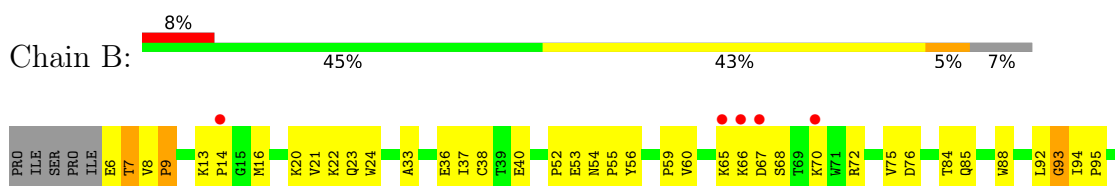
3 Residue-property plots

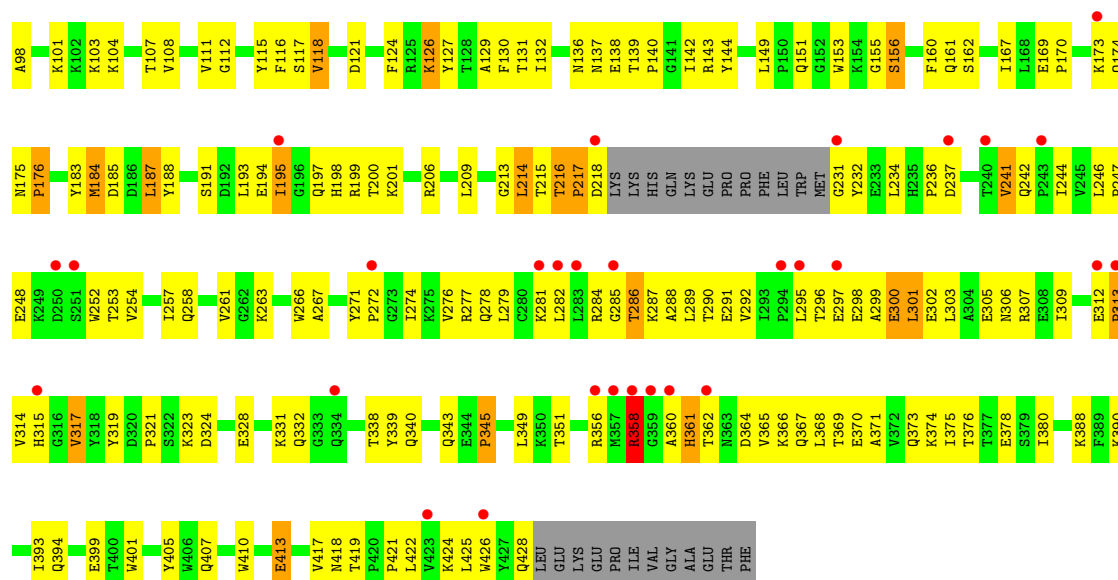
These plots are drawn for all protein, RNA, DNA and oligosaccharide chains in the entry. The first graphic for a chain summarises the proportions of the various outlier classes displayed in the second graphic. The second graphic shows the sequence view annotated by issues in geometry and electron density. Residues are color-coded according to the number of geometric quality criteria for which they contain at least one outlier: green = 0, yellow = 1, orange = 2 and red = 3 or more. A red dot above a residue indicates a poor fit to the electron density ($RSRZ > 2$). Stretches of 2 or more consecutive residues without any outlier are shown as a green connector. Residues present in the sample, but not in the model, are shown in grey.

- Molecule 1: reverse transcriptase p66 subunit



- Molecule 2: reverse transcriptase p51 subunit





4 Data and refinement statistics

Property	Value	Source
Space group	C 1 2 1	Depositor
Cell constants a, b, c, α , β , γ	223.91Å 69.04Å 104.33Å 90.00° 106.64° 90.00°	Depositor
Resolution (Å)	30.00 – 2.80 29.52 – 2.80	Depositor EDS
% Data completeness (in resolution range)	94.4 (30.00-2.80) 94.5 (29.52-2.80)	Depositor EDS
R_{merge}	0.06	Depositor
R_{sym}	(Not available)	Depositor
$\langle I/\sigma(I) \rangle$ ¹	1.84 (at 2.80Å)	Xtrriage
Refinement program	CNS 1.1	Depositor
R, R_{free}	0.262 , 0.312 0.258 , 0.306	Depositor DCC
R_{free} test set	1995 reflections (5.30%)	wwPDB-VP
Wilson B-factor (Å ²)	36.3	Xtrriage
Anisotropy	0.292	Xtrriage
Bulk solvent k_{sol} (e/Å ³), B_{sol} (Å ²)	0.34 , 66.3	EDS
L-test for twinning ²	$\langle L \rangle = 0.49$, $\langle L^2 \rangle = 0.32$	Xtrriage
Estimated twinning fraction	No twinning to report.	Xtrriage
F_o, F_c correlation	0.87	EDS
Total number of atoms	7786	wwPDB-VP
Average B, all atoms (Å ²)	53.0	wwPDB-VP

Xtrriage's analysis on translational NCS is as follows: *The largest off-origin peak in the Patterson function is 3.65% of the height of the origin peak. No significant pseudotranslation is detected.*

¹Intensities estimated from amplitudes.

²Theoretical values of $\langle |L| \rangle$, $\langle L^2 \rangle$ for acentric reflections are 0.5, 0.333 respectively for untwinned datasets, and 0.375, 0.2 for perfectly twinned datasets.

5 Model quality [i](#)

5.1 Standard geometry [i](#)

Bond lengths and bond angles in the following residue types are not validated in this section: CP9

The Z score for a bond length (or angle) is the number of standard deviations the observed value is removed from the expected value. A bond length (or angle) with $|Z| > 5$ is considered an outlier worth inspection. RMSZ is the root-mean-square of all Z scores of the bond lengths (or angles).

Mol	Chain	Bond lengths		Bond angles	
		RMSZ	# Z >5	RMSZ	# Z >5
1	A	0.43	0/4483	0.70	1/6094 (0.0%)
2	B	0.50	0/3488	0.72	1/4740 (0.0%)
All	All	0.46	0/7971	0.71	2/10834 (0.0%)

There are no bond length outliers.

All (2) bond angle outliers are listed below:

Mol	Chain	Res	Type	Atoms	Z	Observed(°)	Ideal(°)
1	A	424	LYS	N-CA-C	6.41	128.30	111.00
2	B	358	ARG	N-CA-C	6.18	127.68	111.00

There are no chirality outliers.

There are no planarity outliers.

5.2 Too-close contacts [i](#)

In the following table, the Non-H and H(model) columns list the number of non-hydrogen atoms and hydrogen atoms in the chain respectively. The H(added) column lists the number of hydrogen atoms added and optimized by MolProbity. The Clashes column lists the number of clashes within the asymmetric unit, whereas Symm-Clashes lists symmetry-related clashes.

Mol	Chain	Non-H	H(model)	H(added)	Clashes	Symm-Clashes
1	A	4367	0	4419	299	0
2	B	3392	0	3418	188	0
3	A	27	0	16	7	0
All	All	7786	0	7853	476	0

The all-atom clashscore is defined as the number of clashes found per 1000 atoms (including hydrogen atoms). The all-atom clashscore for this structure is 30.

All (476) close contacts within the same asymmetric unit are listed below, sorted by their clash magnitude.

Atom-1	Atom-2	Interatomic distance (Å)	Clash overlap (Å)
1:A:362:THR:HG22	1:A:363:ASN:H	1.12	1.15
2:B:65:LYS:HE3	2:B:72:ARG:HD2	1.24	1.08
1:A:92:LEU:HD23	1:A:93:GLY:H	1.16	1.07
2:B:195:ILE:HG22	2:B:199:ARG:HE	1.19	1.04
1:A:424:LYS:HD2	1:A:426:TRP:HE1	1.22	1.01
1:A:236:PRO:HA	3:A:561:CP9:N24	1.77	0.99
1:A:130:PHE:CE2	1:A:144:TYR:HB2	2.01	0.96
2:B:244:ILE:HD12	2:B:244:ILE:H	1.28	0.95
2:B:241:VAL:HG12	2:B:242:GLN:H	1.28	0.95
1:A:424:LYS:HD2	1:A:426:TRP:NE1	1.82	0.95
1:A:362:THR:HG22	1:A:363:ASN:N	1.87	0.90
1:A:228:LEU:H	1:A:228:LEU:HD23	1.33	0.90
2:B:195:ILE:CG2	2:B:199:ARG:HE	1.86	0.88
1:A:343:GLN:HG3	1:A:349:LEU:HD11	1.58	0.86
1:A:28:GLU:O	1:A:32:LYS:HG2	1.75	0.85
1:A:27:THR:HG22	1:A:29:GLU:H	1.38	0.85
1:A:130:PHE:H	1:A:130:PHE:HD2	1.24	0.85
1:A:362:THR:CG2	1:A:363:ASN:H	1.89	0.84
1:A:38:CYS:SG	1:A:132:ILE:HD11	2.18	0.84
1:A:92:LEU:HD23	1:A:93:GLY:N	1.93	0.82
2:B:139:THR:HB	2:B:140:PRO:HD2	1.63	0.81
1:A:90:VAL:HG21	1:A:157:PRO:HB2	1.62	0.81
1:A:334:GLN:HE22	1:A:512:LYS:HG3	1.47	0.80
2:B:149:LEU:HB3	2:B:156:SER:OG	1.82	0.79
1:A:193:LEU:HD12	1:A:198:HIS:HA	1.64	0.79
1:A:23:GLN:HE22	1:A:60:VAL:HG23	1.48	0.79
1:A:445:ALA:HA	1:A:474:ASN:ND2	1.98	0.79
1:A:260:LEU:HD21	1:A:303:LEU:HD13	1.63	0.78
2:B:213:GLY:O	2:B:215:THR:N	2.16	0.78
1:A:459:THR:HG22	1:A:463:ARG:O	1.84	0.78
2:B:356:ARG:HE	2:B:358:ARG:HG2	1.49	0.78
1:A:424:LYS:HE3	1:A:511:ASP:HB2	1.65	0.77
2:B:126:LYS:HE2	2:B:127:TYR:CZ	2.20	0.76
2:B:232:TYR:HE2	2:B:234:LEU:HD21	1.49	0.76
2:B:324:ASP:O	2:B:343:GLN:HG2	1.87	0.75
1:A:358:ARG:H	1:A:358:ARG:HD3	1.51	0.75
1:A:372:VAL:HG11	1:A:411:ILE:HG23	1.67	0.74
1:A:235:HIS:HB3	1:A:236:PRO:HD2	1.67	0.74
2:B:281:LYS:HA	2:B:284:ARG:HD3	1.69	0.74
2:B:142:ILE:H	2:B:142:ILE:HD12	1.53	0.74

Continued on next page...

Continued from previous page...

Atom-1	Atom-2	Interatomic distance (Å)	Clash overlap (Å)
2:B:328:GLU:HG2	2:B:390:LYS:HG3	1.70	0.73
1:A:435:VAL:HG22	2:B:290:THR:HG21	1.70	0.72
1:A:519:ASN:O	1:A:523:GLU:HG2	1.88	0.72
1:A:317:VAL:HG12	1:A:348:ASN:O	1.89	0.72
2:B:252:TRP:CD1	2:B:295:LEU:HD21	2.24	0.72
2:B:241:VAL:HG12	2:B:242:GLN:N	2.05	0.72
2:B:305:GLU:O	2:B:309:ILE:HG13	1.89	0.72
1:A:459:THR:HG21	1:A:463:ARG:HB3	1.72	0.71
1:A:424:LYS:HZ1	1:A:511:ASP:HB3	1.56	0.70
1:A:501:TYR:CE1	1:A:505:ILE:HD11	2.26	0.70
2:B:279:LEU:HD23	2:B:282:LEU:HD12	1.73	0.70
1:A:30:LYS:HG2	1:A:71:TRP:CZ3	2.27	0.70
1:A:253:THR:HB	1:A:290:THR:HA	1.74	0.70
3:A:561:CP9:H22	3:A:561:CP9:H13	1.73	0.69
2:B:218:ASP:C	2:B:231:GLY:N	2.46	0.69
2:B:195:ILE:HG22	2:B:199:ARG:NE	2.00	0.68
1:A:408:ALA:HB1	2:B:364:ASP:HB3	1.73	0.68
1:A:400:THR:O	1:A:404:GLU:HG2	1.94	0.68
1:A:277:ARG:HB2	1:A:336:GLN:NE2	2.08	0.68
1:A:479:LEU:HB3	1:A:517:LEU:HD21	1.76	0.68
1:A:503:LEU:HD22	1:A:535:TRP:HB2	1.76	0.68
1:A:301:LEU:O	1:A:305:GLU:HG2	1.94	0.67
2:B:303:LEU:O	2:B:307:ARG:HG3	1.95	0.67
1:A:29:GLU:O	1:A:32:LYS:HB2	1.94	0.66
2:B:130:PHE:CZ	2:B:144:TYR:HB2	2.29	0.66
1:A:459:THR:CG2	1:A:463:ARG:H	2.09	0.66
1:A:382:ILE:HA	2:B:136:ASN:HD22	1.59	0.66
1:A:134:SER:HB3	1:A:139:THR:O	1.95	0.66
2:B:197:GLN:O	2:B:200:THR:HB	1.96	0.66
2:B:246:LEU:HD12	2:B:307:ARG:HG2	1.78	0.65
1:A:132:ILE:HB	1:A:142:ILE:CG2	2.27	0.65
1:A:445:ALA:HA	1:A:474:ASN:HD21	1.60	0.65
1:A:303:LEU:O	1:A:307:ARG:HG3	1.95	0.65
1:A:424:LYS:HE3	1:A:511:ASP:CB	2.27	0.65
2:B:111:VAL:HG11	2:B:187:LEU:HD22	1.78	0.65
1:A:171:PHE:HB2	1:A:208:HIS:CE1	2.31	0.65
1:A:254:VAL:HG13	1:A:283:LEU:HD22	1.78	0.65
1:A:57:ASN:HA	1:A:129:ALA:O	1.96	0.64
1:A:515:SER:O	1:A:517:LEU:N	2.30	0.64
2:B:369:THR:HG22	2:B:373:GLN:NE2	2.12	0.64
1:A:269:GLN:HA	1:A:351:THR:O	1.96	0.64

Continued on next page...

Continued from previous page...

Atom-1	Atom-2	Interatomic distance (Å)	Clash overlap (Å)
2:B:248:GLU:HB2	2:B:307:ARG:NH1	2.12	0.64
1:A:364:ASP:OD2	1:A:424:LYS:NZ	2.29	0.64
2:B:214:LEU:O	2:B:216:THR:HG22	1.97	0.64
2:B:244:ILE:H	2:B:244:ILE:CD1	2.06	0.64
1:A:132:ILE:HB	1:A:142:ILE:HG21	1.80	0.63
1:A:226:PRO:HA	1:A:234:LEU:O	1.99	0.63
2:B:242:GLN:O	2:B:242:GLN:HG3	1.96	0.63
1:A:424:LYS:HB2	1:A:426:TRP:NE1	2.14	0.63
1:A:460:ASN:HA	2:B:286:THR:HG22	1.80	0.62
1:A:62:ALA:O	1:A:63:ILE:HD13	2.00	0.62
1:A:319:TYR:OH	1:A:385:LYS:HE2	1.99	0.62
1:A:31:ILE:O	1:A:35:VAL:HG23	1.98	0.62
1:A:261:VAL:HG13	1:A:276:VAL:HG11	1.82	0.62
1:A:132:ILE:O	1:A:142:ILE:HB	1.99	0.62
1:A:392:PRO:O	1:A:423:VAL:HG23	1.98	0.62
1:A:233:GLU:HB3	1:A:240:THR:HG23	1.81	0.62
1:A:501:TYR:CZ	1:A:505:ILE:HD11	2.34	0.62
1:A:1:PRO:HG2	1:A:213:GLY:O	2.01	0.61
1:A:325:LEU:HD21	1:A:383:TRP:CE3	2.35	0.61
2:B:142:ILE:HD12	2:B:142:ILE:N	2.15	0.61
2:B:267:ALA:HB2	2:B:426:TRP:CH2	2.35	0.61
1:A:88:TRP:CZ3	2:B:22:LYS:NZ	2.69	0.60
1:A:254:VAL:O	1:A:258:GLN:HG3	2.00	0.60
1:A:399:GLU:HA	1:A:402:TRP:CD1	2.35	0.60
1:A:171:PHE:HB2	1:A:208:HIS:ND1	2.17	0.60
2:B:241:VAL:CG1	2:B:242:GLN:H	2.10	0.60
2:B:13:LYS:O	2:B:16:MET:HB2	2.00	0.60
1:A:235:HIS:CD2	1:A:238:LYS:HE3	2.35	0.60
1:A:424:LYS:CD	1:A:426:TRP:HE1	2.06	0.60
1:A:442:VAL:O	1:A:443:ASP:HB3	2.00	0.60
2:B:33:ALA:O	2:B:36:GLU:HG2	2.02	0.60
1:A:459:THR:CG2	1:A:463:ARG:HB3	2.30	0.60
1:A:130:PHE:CD2	1:A:130:PHE:N	2.69	0.59
2:B:282:LEU:HD21	2:B:296:THR:HG23	1.84	0.59
1:A:130:PHE:HD2	1:A:130:PHE:N	1.97	0.59
2:B:115:TYR:HE2	2:B:185:ASP:OD1	1.85	0.59
2:B:118:VAL:HG22	2:B:149:LEU:HG	1.85	0.59
2:B:232:TYR:CE2	2:B:234:LEU:HD21	2.36	0.59
2:B:314:VAL:HG22	2:B:315:HIS:N	2.18	0.59
1:A:270:ILE:HG23	1:A:271:TYR:CD2	2.38	0.59
2:B:282:LEU:HD21	2:B:296:THR:CG2	2.33	0.58

Continued on next page...

Continued from previous page...

Atom-1	Atom-2	Interatomic distance (Å)	Clash overlap (Å)
1:A:25:PRO:O	1:A:26:LEU:HD23	2.02	0.58
2:B:366:LYS:HG3	2:B:405:TYR:CD1	2.38	0.58
1:A:88:TRP:HZ3	2:B:22:LYS:NZ	2.02	0.58
1:A:326:ILE:HD13	1:A:388:LYS:HB2	1.84	0.58
1:A:424:LYS:HD2	1:A:426:TRP:CD1	2.37	0.58
2:B:8:VAL:HG12	2:B:8:VAL:O	2.02	0.58
1:A:73:LYS:NZ	1:A:130:PHE:HE1	2.02	0.58
2:B:360:ALA:O	2:B:361:HIS:CG	2.57	0.58
1:A:382:ILE:HG23	2:B:136:ASN:ND2	2.19	0.57
2:B:169:GLU:HB2	2:B:170:PRO:HD3	1.86	0.57
1:A:427:TYR:OH	1:A:509:GLN:HA	2.04	0.57
1:A:475:GLN:HB3	1:A:501:TYR:CE2	2.39	0.57
2:B:242:GLN:HB3	2:B:351:THR:OG1	2.04	0.57
1:A:395:LYS:HA	1:A:414:TRP:HH2	1.69	0.57
1:A:27:THR:HG22	1:A:29:GLU:N	2.13	0.57
1:A:89:GLU:O	1:A:91:GLN:N	2.38	0.57
1:A:68:SER:O	1:A:69:THR:HG23	2.04	0.57
1:A:252:TRP:CD1	1:A:295:LEU:HD21	2.40	0.57
1:A:394:GLN:HB2	1:A:397:THR:OG1	2.04	0.56
1:A:320:ASP:C	1:A:322:SER:H	2.09	0.56
1:A:334:GLN:HE22	1:A:512:LYS:CG	2.18	0.56
1:A:452:LEU:CD2	1:A:470:THR:HG22	2.35	0.56
2:B:214:LEU:O	2:B:216:THR:N	2.38	0.56
1:A:2:ILE:HD11	1:A:119:PRO:HB3	1.87	0.56
1:A:358:ARG:HD3	1:A:358:ARG:N	2.20	0.56
1:A:535:TRP:CZ3	2:B:422:LEU:HD11	2.40	0.56
2:B:369:THR:HG22	2:B:373:GLN:HE22	1.71	0.56
2:B:85:GLN:HA	2:B:88:TRP:CE2	2.41	0.56
2:B:244:ILE:HD12	2:B:244:ILE:N	2.11	0.56
2:B:248:GLU:HB2	2:B:307:ARG:CZ	2.36	0.56
2:B:366:LYS:HA	2:B:405:TYR:CD2	2.41	0.56
1:A:442:VAL:CG1	1:A:485:ALA:HB2	2.35	0.55
2:B:174:GLN:C	2:B:176:PRO:HD3	2.26	0.55
1:A:459:THR:CG2	1:A:463:ARG:N	2.69	0.55
1:A:188:TYR:HB2	3:A:561:CP9:S1	2.46	0.55
1:A:324:ASP:O	1:A:343:GLN:HG2	2.07	0.55
2:B:425:LEU:HD12	2:B:428:GLN:OE1	2.05	0.55
1:A:30:LYS:C	1:A:32:LYS:H	2.08	0.55
2:B:169:GLU:CB	2:B:170:PRO:HD3	2.37	0.55
1:A:416:PHE:CD1	1:A:417:VAL:N	2.75	0.55
2:B:274:ILE:HA	2:B:306:ASN:OD1	2.06	0.55

Continued on next page...

Continued from previous page...

Atom-1	Atom-2	Interatomic distance (Å)	Clash overlap (Å)
1:A:512:LYS:C	1:A:514:GLU:H	2.09	0.55
1:A:112:GLY:C	1:A:114:ALA:H	2.09	0.54
1:A:442:VAL:HB	1:A:481:ALA:HB1	1.89	0.54
1:A:72:ARG:HD3	1:A:73:LYS:O	2.08	0.54
2:B:92:LEU:O	2:B:93:GLY:O	2.25	0.54
1:A:191:SER:OG	1:A:198:HIS:ND1	2.38	0.54
1:A:260:LEU:HD21	1:A:303:LEU:CD1	2.37	0.54
1:A:281:LYS:O	1:A:284:ARG:HG3	2.06	0.54
1:A:324:ASP:OD1	1:A:388:LYS:HE3	2.08	0.54
1:A:246:LEU:HD22	1:A:260:LEU:HD12	1.90	0.54
2:B:183:TYR:CD2	2:B:380:ILE:HD13	2.43	0.54
1:A:472:THR:OG1	1:A:476:LYS:HB3	2.08	0.54
2:B:209:LEU:HD12	2:B:217:PRO:HG2	1.90	0.54
2:B:254:VAL:HG21	2:B:288:ALA:O	2.08	0.54
1:A:73:LYS:HZ1	1:A:130:PHE:HE1	1.55	0.54
1:A:489:SER:HB3	1:A:493:VAL:HG22	1.89	0.54
1:A:28:GLU:O	1:A:28:GLU:HG2	2.07	0.54
1:A:228:LEU:H	1:A:228:LEU:CD2	2.11	0.54
1:A:130:PHE:HE2	1:A:144:TYR:HB2	1.67	0.53
1:A:194:GLU:H	1:A:197:GLN:HB3	1.73	0.53
1:A:23:GLN:NE2	1:A:60:VAL:HG23	2.19	0.53
1:A:368:LEU:O	1:A:372:VAL:HG23	2.08	0.53
1:A:457:TYR:CD1	1:A:457:TYR:C	2.80	0.53
2:B:323:LYS:HB2	2:B:343:GLN:NE2	2.24	0.53
1:A:30:LYS:C	1:A:32:LYS:N	2.62	0.53
1:A:296:THR:HG22	1:A:298:GLU:H	1.73	0.53
1:A:356:ARG:NE	1:A:359:GLY:HA3	2.23	0.53
1:A:359:GLY:O	1:A:361:HIS:N	2.42	0.53
1:A:510:PRO:HG2	1:A:522:ILE:HD11	1.89	0.53
1:A:30:LYS:HG2	1:A:71:TRP:CH2	2.44	0.53
1:A:395:LYS:HG3	1:A:414:TRP:CH2	2.44	0.53
1:A:447:ASN:OD1	1:A:449:GLU:HB2	2.08	0.53
1:A:511:ASP:OD2	1:A:512:LYS:HG2	2.09	0.53
1:A:100:LEU:HD13	3:A:561:CP9:H16	1.90	0.53
1:A:169:GLU:HB3	1:A:170:PRO:HD3	1.91	0.52
1:A:277:ARG:CB	1:A:336:GLN:NE2	2.73	0.52
2:B:115:TYR:C	2:B:117:SER:H	2.13	0.52
1:A:224:GLU:O	1:A:226:PRO:N	2.42	0.52
1:A:503:LEU:O	1:A:507:GLN:HG3	2.09	0.52
1:A:122:GLU:HA	1:A:125:ARG:HD2	1.92	0.52
2:B:169:GLU:OE1	2:B:173:LYS:HE2	2.08	0.52

Continued on next page...

Continued from previous page...

Atom-1	Atom-2	Interatomic distance (Å)	Clash overlap (Å)
1:A:493:VAL:HG12	1:A:494:ASN:N	2.24	0.52
2:B:7:THR:HG23	2:B:121:ASP:HB2	1.91	0.52
1:A:10:VAL:HG21	1:A:153:TRP:HH2	1.75	0.52
2:B:191:SER:OG	2:B:198:HIS:ND1	2.35	0.52
1:A:356:ARG:CZ	1:A:359:GLY:HA3	2.40	0.52
1:A:97:PRO:HA	1:A:100:LEU:HD12	1.91	0.51
1:A:111:VAL:HG23	1:A:111:VAL:O	2.10	0.51
1:A:328:GLU:HG3	1:A:390:LYS:HB2	1.93	0.51
1:A:430:GLU:O	1:A:532:TYR:HD1	1.94	0.51
1:A:452:LEU:HD23	1:A:470:THR:HA	1.92	0.51
2:B:24:TRP:CZ3	2:B:399:GLU:HG2	2.46	0.51
1:A:108:VAL:HA	1:A:187:LEU:O	2.10	0.51
1:A:225:PRO:O	1:A:227:PHE:N	2.40	0.51
1:A:390:LYS:HB3	1:A:417:VAL:HG21	1.92	0.51
3:A:561:CP9:H15	3:A:561:CP9:C26	2.40	0.51
2:B:94:ILE:HD11	2:B:161:GLN:HG2	1.92	0.51
1:A:320:ASP:O	1:A:322:SER:N	2.44	0.51
1:A:305:GLU:O	1:A:309:ILE:HG13	2.10	0.51
2:B:76:ASP:OD1	2:B:76:ASP:C	2.48	0.51
2:B:331:LYS:O	2:B:424:LYS:HD2	2.11	0.51
1:A:88:TRP:O	1:A:89:GLU:C	2.49	0.51
1:A:297:GLU:O	1:A:300:GLU:HG2	2.11	0.51
2:B:306:ASN:HA	2:B:309:ILE:HD12	1.92	0.51
1:A:424:LYS:HB2	1:A:426:TRP:CD1	2.46	0.51
1:A:180:ILE:O	1:A:181:TYR:HD2	1.94	0.50
2:B:38:CYS:SG	2:B:132:ILE:HD11	2.50	0.50
2:B:271:TYR:HB2	2:B:274:ILE:HD12	1.94	0.50
1:A:112:GLY:O	1:A:114:ALA:N	2.40	0.50
1:A:442:VAL:HG11	1:A:485:ALA:HB2	1.92	0.50
2:B:115:TYR:HB3	2:B:149:LEU:HB2	1.92	0.50
2:B:194:GLU:O	2:B:195:ILE:C	2.48	0.50
1:A:238:LYS:HD2	1:A:315:HIS:HB3	1.94	0.50
2:B:213:GLY:C	2:B:215:THR:H	2.15	0.50
1:A:362:THR:CG2	1:A:363:ASN:N	2.57	0.50
1:A:489:SER:HB3	1:A:493:VAL:CG2	2.42	0.50
2:B:365:VAL:HG12	2:B:405:TYR:HE2	1.77	0.50
2:B:276:VAL:C	2:B:278:GLN:H	2.14	0.50
1:A:511:ASP:OD2	1:A:512:LYS:N	2.44	0.50
2:B:153:TRP:CZ2	2:B:155:GLY:HA3	2.45	0.50
1:A:19:PRO:HD3	1:A:80:LEU:HD13	1.94	0.50
1:A:435:VAL:CG2	2:B:290:THR:HG21	2.40	0.50

Continued on next page...

Continued from previous page...

Atom-1	Atom-2	Interatomic distance (Å)	Clash overlap (Å)
1:A:276:VAL:HG12	1:A:276:VAL:O	2.12	0.49
1:A:317:VAL:HG22	1:A:318:TYR:N	2.27	0.49
1:A:354:TYR:OH	1:A:370:GLU:OE1	2.25	0.49
2:B:366:LYS:O	2:B:370:GLU:HG3	2.13	0.49
1:A:377:THR:O	1:A:381:VAL:HG23	2.13	0.49
1:A:136:ASN:O	1:A:138:GLU:N	2.45	0.49
1:A:424:LYS:CB	1:A:426:TRP:NE1	2.75	0.49
2:B:257:ILE:O	2:B:261:VAL:HG23	2.12	0.49
1:A:389:PHE:HB3	1:A:391:LEU:HD21	1.95	0.49
2:B:376:THR:HG21	2:B:410:TRP:CZ3	2.48	0.49
1:A:140:PRO:O	1:A:142:ILE:N	2.46	0.49
1:A:217:PRO:O	1:A:218:ASP:O	2.31	0.49
2:B:66:LYS:HE3	2:B:67:ASP:OD1	2.12	0.48
1:A:181:TYR:CE1	2:B:138:GLU:HB3	2.49	0.48
2:B:266:TRP:CD1	2:B:422:LEU:HD12	2.48	0.48
1:A:94:ILE:HG13	1:A:94:ILE:O	2.11	0.48
1:A:326:ILE:CD1	1:A:388:LYS:HB2	2.43	0.48
2:B:254:VAL:O	2:B:258:GLN:HG3	2.12	0.48
2:B:425:LEU:O	2:B:428:GLN:HG2	2.13	0.48
2:B:66:LYS:HA	2:B:407:GLN:OE1	2.13	0.48
2:B:136:ASN:O	2:B:137:ASN:HB2	2.12	0.48
2:B:195:ILE:O	2:B:199:ARG:HD2	2.14	0.48
2:B:13:LYS:HE3	2:B:16:MET:SD	2.54	0.48
1:A:62:ALA:C	1:A:63:ILE:HD13	2.34	0.48
1:A:180:ILE:O	1:A:181:TYR:CD2	2.66	0.48
1:A:188:TYR:CD2	1:A:188:TYR:C	2.87	0.48
1:A:538:ALA:O	1:A:539:HIS:HB2	2.13	0.48
2:B:7:THR:CG2	2:B:121:ASP:HA	2.44	0.48
2:B:242:GLN:HB3	2:B:351:THR:HG1	1.78	0.48
2:B:108:VAL:HG22	2:B:188:TYR:CD2	2.49	0.48
1:A:235:HIS:CB	1:A:236:PRO:HD2	2.38	0.48
1:A:494:ASN:HB3	2:B:289:LEU:HD22	1.96	0.48
2:B:278:GLN:HE21	2:B:301:LEU:CD2	2.27	0.47
1:A:227:PHE:HD2	1:A:228:LEU:HD23	1.79	0.47
2:B:101:LYS:O	2:B:236:PRO:HB2	2.14	0.47
2:B:276:VAL:C	2:B:278:GLN:N	2.67	0.47
1:A:236:PRO:HA	3:A:561:CP9:C25	2.43	0.47
1:A:459:THR:HG22	1:A:463:ARG:N	2.28	0.47
1:A:90:VAL:CG2	1:A:157:PRO:HB2	2.39	0.47
2:B:115:TYR:O	2:B:117:SER:N	2.48	0.47
1:A:376:THR:O	1:A:380:ILE:HG13	2.14	0.47

Continued on next page...

Continued from previous page...

Atom-1	Atom-2	Interatomic distance (Å)	Clash overlap (Å)
2:B:56:TYR:CE2	2:B:126:LYS:HD2	2.50	0.47
1:A:31:ILE:HD13	1:A:133:PRO:HB2	1.96	0.47
1:A:131:THR:OG1	1:A:143:ARG:HG2	2.14	0.47
1:A:206:ARG:CZ	1:A:206:ARG:HB3	2.44	0.47
3:A:561:CP9:H13	3:A:561:CP9:C22	2.44	0.47
2:B:72:ARG:NH2	2:B:151:GLN:HE22	2.11	0.47
2:B:263:LYS:HB3	2:B:426:TRP:CZ3	2.50	0.47
1:A:164:MET:CE	1:A:187:LEU:HD21	2.45	0.47
1:A:358:ARG:HG2	1:A:360:ALA:H	1.79	0.47
1:A:198:HIS:O	1:A:202:ILE:HG12	2.15	0.47
2:B:317:VAL:HG12	2:B:349:LEU:HD23	1.97	0.47
1:A:19:PRO:CD	1:A:80:LEU:HD13	2.45	0.47
1:A:202:ILE:O	1:A:206:ARG:HG3	2.15	0.47
2:B:276:VAL:O	2:B:278:GLN:N	2.48	0.47
1:A:240:THR:OG1	1:A:241:VAL:N	2.48	0.46
1:A:479:LEU:CB	1:A:517:LEU:HD21	2.45	0.46
1:A:31:ILE:O	1:A:31:ILE:HG22	2.14	0.46
1:A:398:TRP:CZ3	1:A:402:TRP:CD1	3.04	0.46
1:A:53:GLU:O	1:A:55:PRO:HD3	2.14	0.46
1:A:60:VAL:C	1:A:61:PHE:HD1	2.18	0.46
1:A:270:ILE:O	1:A:314:VAL:HG11	2.15	0.46
2:B:101:LYS:O	2:B:236:PRO:CB	2.64	0.46
2:B:94:ILE:HG12	2:B:161:GLN:OE1	2.16	0.46
1:A:90:VAL:O	1:A:91:GLN:C	2.53	0.46
2:B:356:ARG:HD3	2:B:367:GLN:NE2	2.31	0.46
1:A:41:MET:HE2	1:A:47:ILE:HD13	1.98	0.46
1:A:180:ILE:HA	1:A:188:TYR:O	2.16	0.46
2:B:184:MET:HB3	2:B:185:ASP:H	1.51	0.46
1:A:358:ARG:HG2	1:A:359:GLY:N	2.31	0.46
1:A:364:ASP:H	1:A:424:LYS:HZ3	1.62	0.46
1:A:447:ASN:HB3	1:A:450:THR:OG1	2.16	0.46
1:A:297:GLU:HA	1:A:300:GLU:HG2	1.96	0.46
1:A:417:VAL:O	1:A:417:VAL:HG12	2.15	0.46
2:B:319:TYR:CE2	2:B:321:PRO:HG3	2.51	0.46
1:A:64:LYS:HD3	1:A:66:LYS:HA	1.98	0.45
1:A:270:ILE:HG23	1:A:271:TYR:HD2	1.79	0.45
1:A:503:LEU:CD2	1:A:535:TRP:HB2	2.44	0.45
1:A:10:VAL:HG12	1:A:11:LYS:N	2.31	0.45
1:A:115:TYR:OH	1:A:151:GLN:HB2	2.16	0.45
2:B:388:LYS:HG3	2:B:413:GLU:HB3	1.98	0.45
1:A:395:LYS:HA	1:A:414:TRP:CH2	2.49	0.45

Continued on next page...

Continued from previous page...

Atom-1	Atom-2	Interatomic distance (Å)	Clash overlap (Å)
2:B:115:TYR:N	2:B:115:TYR:CD1	2.83	0.45
2:B:390:LYS:HB3	2:B:417:VAL:CG1	2.47	0.45
1:A:194:GLU:O	1:A:197:GLN:N	2.50	0.45
2:B:52:PRO:C	2:B:54:ASN:H	2.20	0.45
2:B:267:ALA:HB2	2:B:426:TRP:CZ2	2.51	0.45
2:B:278:GLN:HE21	2:B:301:LEU:HD21	1.81	0.45
1:A:257:ILE:O	1:A:261:VAL:HG23	2.17	0.45
1:A:54:ASN:HD21	1:A:126:LYS:HB2	1.81	0.45
1:A:442:VAL:HG12	1:A:457:TYR:HB3	1.97	0.45
2:B:115:TYR:C	2:B:117:SER:N	2.69	0.45
1:A:30:LYS:O	1:A:32:LYS:N	2.49	0.44
1:A:68:SER:O	1:A:69:THR:CB	2.65	0.44
1:A:512:LYS:NZ	1:A:523:GLU:OE1	2.48	0.44
2:B:213:GLY:C	2:B:215:THR:N	2.70	0.44
2:B:319:TYR:O	2:B:321:PRO:HD3	2.17	0.44
2:B:365:VAL:HG11	2:B:401:TRP:HB2	2.00	0.44
1:A:328:GLU:O	1:A:339:TYR:HA	2.17	0.44
1:A:334:GLN:NE2	1:A:512:LYS:HB2	2.33	0.44
2:B:24:TRP:CD1	2:B:24:TRP:N	2.85	0.44
2:B:130:PHE:CE1	2:B:144:TYR:HB2	2.52	0.44
2:B:300:GLU:C	2:B:302:GLU:H	2.20	0.44
1:A:3:SER:OG	1:A:4:PRO:HD2	2.17	0.44
2:B:85:GLN:HA	2:B:88:TRP:NE1	2.31	0.44
1:A:64:LYS:HE3	1:A:69:THR:HA	1.99	0.44
1:A:320:ASP:OD2	1:A:323:LYS:NZ	2.50	0.44
1:A:512:LYS:HZ1	1:A:523:GLU:CD	2.20	0.44
2:B:6:GLU:O	2:B:7:THR:O	2.34	0.44
2:B:312:GLU:HA	2:B:313:PRO:HD2	1.69	0.44
1:A:457:TYR:C	1:A:457:TYR:HD1	2.19	0.44
2:B:115:TYR:CE2	2:B:185:ASP:OD1	2.70	0.44
2:B:160:PHE:O	2:B:161:GLN:C	2.56	0.44
2:B:297:GLU:C	2:B:299:ALA:H	2.20	0.44
1:A:424:LYS:O	1:A:424:LYS:HG3	2.17	0.44
1:A:347:LYS:HA	1:A:347:LYS:HD2	1.61	0.44
2:B:21:VAL:HB	2:B:59:PRO:HD3	2.00	0.44
1:A:193:LEU:HB3	1:A:197:GLN:OE1	2.18	0.44
1:A:513:SER:O	1:A:514:GLU:C	2.55	0.44
2:B:104:LYS:HA	2:B:237:ASP:OD1	2.17	0.44
1:A:112:GLY:C	1:A:114:ALA:N	2.70	0.44
1:A:137:ASN:OD1	1:A:137:ASN:O	2.35	0.43
2:B:7:THR:HG23	2:B:121:ASP:CB	2.47	0.43

Continued on next page...

Continued from previous page...

Atom-1	Atom-2	Interatomic distance (Å)	Clash overlap (Å)
2:B:111:VAL:CG1	2:B:187:LEU:HD22	2.46	0.43
2:B:201:LYS:HA	2:B:201:LYS:HD3	1.78	0.43
1:A:320:ASP:C	1:A:322:SER:N	2.72	0.43
1:A:358:ARG:NE	1:A:359:GLY:H	2.16	0.43
1:A:374:LYS:O	1:A:374:LYS:HD3	2.18	0.43
1:A:465:LYS:HG2	1:A:466:VAL:N	2.33	0.43
1:A:518:VAL:O	1:A:522:ILE:HG13	2.18	0.43
1:A:111:VAL:HG22	1:A:185:ASP:O	2.18	0.43
1:A:533:LEU:HA	1:A:533:LEU:HD23	1.80	0.43
2:B:131:THR:OG1	2:B:143:ARG:HD2	2.18	0.43
1:A:271:TYR:CE1	1:A:314:VAL:HG23	2.54	0.43
1:A:331:LYS:HD2	1:A:364:ASP:OD1	2.19	0.43
1:A:483:TYR:CE1	1:A:520:GLN:HB3	2.53	0.43
1:A:536:VAL:O	1:A:537:PRO:C	2.57	0.43
2:B:7:THR:HG23	2:B:121:ASP:HA	2.00	0.43
2:B:60:VAL:HG12	2:B:75:VAL:HG22	2.00	0.43
1:A:308:GLU:HA	1:A:311:LYS:HG2	2.00	0.43
1:A:475:GLN:NE2	1:A:501:TYR:CZ	2.86	0.43
1:A:511:ASP:HA	1:A:522:ILE:HD13	2.01	0.43
2:B:314:VAL:CG2	2:B:315:HIS:N	2.81	0.43
1:A:291:GLU:O	1:A:293:ILE:HG13	2.19	0.43
2:B:112:GLY:CA	2:B:185:ASP:HB3	2.49	0.43
2:B:331:LYS:NZ	2:B:364:ASP:OD2	2.51	0.43
2:B:103:LYS:HA	2:B:103:LYS:HD3	1.79	0.43
2:B:360:ALA:O	2:B:361:HIS:CD2	2.72	0.43
2:B:393:ILE:HG12	2:B:394:GLN:N	2.33	0.43
1:A:76:ASP:OD2	1:A:78:ARG:NH1	2.52	0.43
2:B:390:LYS:HB3	2:B:417:VAL:HG11	2.01	0.43
1:A:459:THR:HG22	1:A:463:ARG:CA	2.49	0.42
2:B:153:TRP:CE2	2:B:155:GLY:HA3	2.54	0.42
2:B:108:VAL:HB	2:B:232:TYR:HB3	2.01	0.42
2:B:279:LEU:CD2	2:B:282:LEU:HD12	2.48	0.42
1:A:296:THR:HG22	1:A:298:GLU:N	2.33	0.42
1:A:453:GLY:O	1:A:469:LEU:HB2	2.20	0.42
2:B:374:LYS:HE2	2:B:378:GLU:CD	2.40	0.42
1:A:183:TYR:O	1:A:185:ASP:N	2.52	0.42
1:A:409:THR:OG1	1:A:410:TRP:N	2.52	0.42
1:A:424:LYS:NZ	1:A:511:ASP:HB3	2.30	0.42
2:B:161:GLN:O	2:B:162:SER:C	2.58	0.42
2:B:194:GLU:O	2:B:197:GLN:N	2.52	0.42
1:A:306:ASN:O	1:A:310:LEU:HD13	2.19	0.42

Continued on next page...

Continued from previous page...

Atom-1	Atom-2	Interatomic distance (Å)	Clash overlap (Å)
1:A:467:VAL:HA	1:A:468:PRO:HD3	1.82	0.42
2:B:361:HIS:O	2:B:362:THR:OG1	2.30	0.42
1:A:114:ALA:HB1	1:A:160:PHE:CE1	2.55	0.42
1:A:395:LYS:HG3	1:A:414:TRP:CZ2	2.54	0.42
1:A:435:VAL:HG22	2:B:290:THR:CG2	2.44	0.42
1:A:469:LEU:HD23	1:A:469:LEU:HA	1.86	0.42
2:B:20:LYS:HE2	2:B:55:PRO:HB2	2.00	0.42
2:B:84:THR:HG21	2:B:124:PHE:HZ	1.84	0.42
1:A:276:VAL:HG12	1:A:280:CYS:HB3	2.01	0.42
1:A:452:LEU:HD22	1:A:470:THR:HG22	2.01	0.42
1:A:479:LEU:O	1:A:521:ILE:HD11	2.20	0.42
1:A:433:PRO:HG3	1:A:532:TYR:CE2	2.55	0.42
2:B:70:LYS:HB2	2:B:70:LYS:HE3	1.85	0.42
1:A:331:LYS:HB2	1:A:337:TRP:CZ3	2.55	0.42
2:B:139:THR:CB	2:B:140:PRO:HD2	2.41	0.42
1:A:101:LYS:HB2	1:A:101:LYS:HZ3	1.85	0.41
1:A:439:THR:HG22	1:A:441:TYR:CE1	2.55	0.41
1:A:501:TYR:CZ	1:A:505:ILE:CD1	3.03	0.41
2:B:371:ALA:O	2:B:375:ILE:HG13	2.18	0.41
1:A:175:ASN:OD1	1:A:201:LYS:NZ	2.45	0.41
1:A:402:TRP:CE3	1:A:402:TRP:C	2.92	0.41
2:B:278:GLN:CG	2:B:299:ALA:HA	2.51	0.41
1:A:379:SER:HA	1:A:383:TRP:CE3	2.55	0.41
1:A:23:GLN:HE22	1:A:60:VAL:H	1.68	0.41
1:A:208:HIS:NE2	1:A:212:TRP:NE1	2.63	0.41
1:A:235:HIS:HB3	1:A:236:PRO:CD	2.43	0.41
1:A:499:SER:O	1:A:499:SER:OG	2.37	0.41
1:A:164:MET:HE2	1:A:187:LEU:HD21	2.02	0.41
1:A:535:TRP:CH2	2:B:422:LEU:HD11	2.56	0.41
2:B:254:VAL:HG23	2:B:291:GLU:O	2.21	0.41
1:A:65:LYS:O	1:A:66:LYS:C	2.58	0.41
1:A:407:GLN:HG2	2:B:393:ILE:HA	2.02	0.41
2:B:72:ARG:HH21	2:B:151:GLN:NE2	2.19	0.41
2:B:126:LYS:HE2	2:B:127:TYR:OH	2.20	0.41
2:B:142:ILE:H	2:B:142:ILE:CD1	2.30	0.41
1:A:27:THR:CG2	1:A:29:GLU:HB3	2.51	0.41
1:A:126:LYS:O	1:A:128:THR:N	2.54	0.41
1:A:182:GLN:O	1:A:183:TYR:CD1	2.74	0.41
1:A:394:GLN:O	1:A:397:THR:N	2.52	0.41
2:B:36:GLU:CG	2:B:37:ILE:N	2.84	0.41
2:B:183:TYR:CD2	2:B:184:MET:HB2	2.56	0.41

Continued on next page...

Continued from previous page...

Atom-1	Atom-2	Interatomic distance (Å)	Clash overlap (Å)
1:A:68:SER:O	1:A:69:THR:CG2	2.69	0.41
2:B:23:GLN:OE1	2:B:60:VAL:HG22	2.20	0.41
2:B:332:GLN:HG3	2:B:338:THR:HG23	2.02	0.41
1:A:246:LEU:HA	1:A:247:PRO:HD3	1.82	0.40
1:A:480:GLN:HG2	1:A:517:LEU:HD11	2.03	0.40
1:A:484:LEU:HD23	1:A:484:LEU:HA	1.83	0.40
2:B:167:ILE:O	2:B:167:ILE:HG22	2.20	0.40
2:B:206:ARG:HE	2:B:217:PRO:HD2	1.86	0.40
2:B:278:GLN:HG2	2:B:302:GLU:HB2	2.02	0.40
2:B:328:GLU:HG2	2:B:390:LYS:CG	2.47	0.40
2:B:339:TYR:C	2:B:340:GLN:NE2	2.74	0.40
1:A:171:PHE:CE2	1:A:205:LEU:HA	2.57	0.40
1:A:268:SER:C	1:A:270:ILE:H	2.24	0.40
2:B:129:ALA:HA	2:B:144:TYR:O	2.21	0.40
1:A:323:LYS:HE2	1:A:344:GLU:OE2	2.21	0.40
1:A:362:THR:O	1:A:510:PRO:HA	2.21	0.40
1:A:444:GLY:O	1:A:445:ALA:HB2	2.22	0.40
2:B:253:THR:O	2:B:257:ILE:HG13	2.21	0.40
1:A:120:LEU:O	1:A:121:ASP:C	2.59	0.40
1:A:235:HIS:HB2	1:A:238:LYS:CG	2.51	0.40
2:B:107:THR:HA	2:B:232:TYR:O	2.21	0.40
2:B:299:ALA:O	2:B:302:GLU:N	2.55	0.40
1:A:276:VAL:O	1:A:276:VAL:CG1	2.69	0.40
2:B:253:THR:HA	2:B:292:VAL:HA	2.02	0.40
2:B:284:ARG:O	2:B:287:LYS:HD2	2.22	0.40
2:B:365:VAL:HG12	2:B:405:TYR:CE2	2.56	0.40

There are no symmetry-related clashes.

5.3 Torsion angles [\(i\)](#)

5.3.1 Protein backbone [\(i\)](#)

In the following table, the Percentiles column shows the percent Ramachandran outliers of the chain as a percentile score with respect to all X-ray entries followed by that with respect to entries of similar resolution.

The Analysed column shows the number of residues for which the backbone conformation was analysed, and the total number of residues.

Mol	Chain	Analysed	Favoured	Allowed	Outliers	Percentiles	
1	A	531/560 (95%)	442 (83%)	51 (10%)	38 (7%)	1	2
2	B	407/440 (92%)	334 (82%)	47 (12%)	26 (6%)	1	3
All	All	938/1000 (94%)	776 (83%)	98 (10%)	64 (7%)	1	3

All (64) Ramachandran outliers are listed below:

Mol	Chain	Res	Type
1	A	133	PRO
1	A	137	ASN
1	A	141	GLY
1	A	225	PRO
1	A	230	MET
1	A	347	LYS
1	A	360	ALA
1	A	418	ASN
1	A	516	GLU
2	B	7	THR
2	B	93	GLY
2	B	214	LEU
2	B	241	VAL
2	B	313	PRO
2	B	358	ARG
1	A	14	PRO
1	A	85	GLN
1	A	237	ASP
1	A	346	PHE
1	A	426	TRP
1	A	443	ASP
2	B	9	PRO
2	B	285	GLY
2	B	345	PRO
2	B	361	HIS
2	B	421	PRO
1	A	69	THR
1	A	91	GLN
1	A	193	LEU
1	A	195	ILE
1	A	269	GLN
1	A	289	LEU
1	A	295	LEU
1	A	311	LYS
1	A	361	HIS

Continued on next page...

Continued from previous page...

Mol	Chain	Res	Type
1	A	412	PRO
2	B	14	PRO
2	B	195	ILE
2	B	217	PRO
2	B	272	PRO
2	B	286	THR
2	B	300	GLU
1	A	55	PRO
1	A	78	ARG
1	A	113	ASP
1	A	270	ILE
1	A	321	PRO
1	A	512	LYS
2	B	116	PHE
2	B	277	ARG
2	B	419	THR
1	A	122	GLU
2	B	98	ALA
2	B	176	PRO
2	B	193	LEU
1	A	90	VAL
1	A	276	VAL
2	B	298	GLU
1	A	510	PRO
1	A	537	PRO
2	B	317	VAL
1	A	21	VAL
1	A	433	PRO
2	B	247	PRO

5.3.2 Protein sidechains [i](#)

In the following table, the Percentiles column shows the percent sidechain outliers of the chain as a percentile score with respect to all X-ray entries followed by that with respect to entries of similar resolution.

The Analysed column shows the number of residues for which the sidechain conformation was analysed, and the total number of residues.

Mol	Chain	Analysed	Rotameric	Outliers	Percentiles	
1	A	480/500 (96%)	453 (94%)	27 (6%)	21	51
2	B	373/400 (93%)	356 (95%)	17 (5%)	27	60

Continued on next page...

Continued from previous page...

Mol	Chain	Analysed	Rotameric	Outliers	Percentiles	
All	All	853/900 (95%)	809 (95%)	44 (5%)	23	55

All (44) residues with a non-rotameric sidechain are listed below:

Mol	Chain	Res	Type
1	A	2	ILE
1	A	14	PRO
1	A	24	TRP
1	A	72	ARG
1	A	83	ARG
1	A	91	GLN
1	A	92	LEU
1	A	101	LYS
1	A	126	LYS
1	A	130	PHE
1	A	177	ASP
1	A	183	TYR
1	A	188	TYR
1	A	216	THR
1	A	225	PRO
1	A	244	ILE
1	A	248	GLU
1	A	353	LYS
1	A	356	ARG
1	A	358	ARG
1	A	364	ASP
1	A	368	LEU
1	A	374	LYS
1	A	402	TRP
1	A	457	TYR
1	A	474	ASN
1	A	499	SER
2	B	9	PRO
2	B	40	GLU
2	B	53	GLU
2	B	68	SER
2	B	95	PRO
2	B	118	VAL
2	B	126	LYS
2	B	156	SER
2	B	175	ASN
2	B	184	MET

Continued on next page...

Continued from previous page...

Mol	Chain	Res	Type
2	B	187	LEU
2	B	216	THR
2	B	301	LEU
2	B	345	PRO
2	B	368	LEU
2	B	413	GLU
2	B	418	ASN

Sometimes sidechains can be flipped to improve hydrogen bonding and reduce clashes. All (20) such sidechains are listed below:

Mol	Chain	Res	Type
1	A	23	GLN
1	A	137	ASN
1	A	147	ASN
1	A	182	GLN
1	A	278	GLN
1	A	332	GLN
1	A	334	GLN
1	A	336	GLN
1	A	407	GLN
1	A	474	ASN
1	A	475	GLN
1	A	509	GLN
1	A	520	GLN
2	B	91	GLN
2	B	136	ASN
2	B	147	ASN
2	B	151	GLN
2	B	175	ASN
2	B	278	GLN
2	B	394	GLN

5.3.3 RNA [i](#)

There are no RNA molecules in this entry.

5.4 Non-standard residues in protein, DNA, RNA chains [i](#)

There are no non-standard protein/DNA/RNA residues in this entry.

5.5 Carbohydrates [i](#)

There are no monosaccharides in this entry.

5.6 Ligand geometry [i](#)

1 ligand is modelled in this entry.

In the following table, the Counts columns list the number of bonds (or angles) for which Mogul statistics could be retrieved, the number of bonds (or angles) that are observed in the model and the number of bonds (or angles) that are defined in the Chemical Component Dictionary. The Link column lists molecule types, if any, to which the group is linked. The Z score for a bond length (or angle) is the number of standard deviations the observed value is removed from the expected value. A bond length (or angle) with $|Z| > 2$ is considered an outlier worth inspection. RMSZ is the root-mean-square of all Z scores of the bond lengths (or angles).

Mol	Type	Chain	Res	Link	Bond lengths			Bond angles		
					Counts	RMSZ	# Z > 2	Counts	RMSZ	# Z > 2
3	CP9	A	561	-	23,31,31	1.57	6 (26%)	24,45,45	1.61	3 (12%)

In the following table, the Chirals column lists the number of chiral outliers, the number of chiral centers analysed, the number of these observed in the model and the number defined in the Chemical Component Dictionary. Similar counts are reported in the Torsion and Rings columns. '-' means no outliers of that kind were identified.

Mol	Type	Chain	Res	Link	Chirals	Torsions	Rings
3	CP9	A	561	-	-	0/4/8/8	0/5/5/5

All (6) bond length outliers are listed below:

Mol	Chain	Res	Type	Atoms	Z	Observed(Å)	Ideal(Å)
3	A	561	CP9	C22-C23	3.32	1.41	1.36
3	A	561	CP9	C5-S1	2.59	1.76	1.74
3	A	561	CP9	C13-C12	2.49	1.41	1.36
3	A	561	CP9	C15-C16	2.30	1.41	1.36
3	A	561	CP9	C25-N24	2.28	1.36	1.32
3	A	561	CP9	C7-C6	2.06	1.41	1.36

All (3) bond angle outliers are listed below:

Mol	Chain	Res	Type	Atoms	Z	Observed(°)	Ideal(°)
3	A	561	CP9	C23-C22-C21	-4.37	115.58	119.31
3	A	561	CP9	C11-C10-N3	3.81	118.54	112.63
3	A	561	CP9	C25-C20-C21	-2.99	118.10	121.12

There are no chirality outliers.

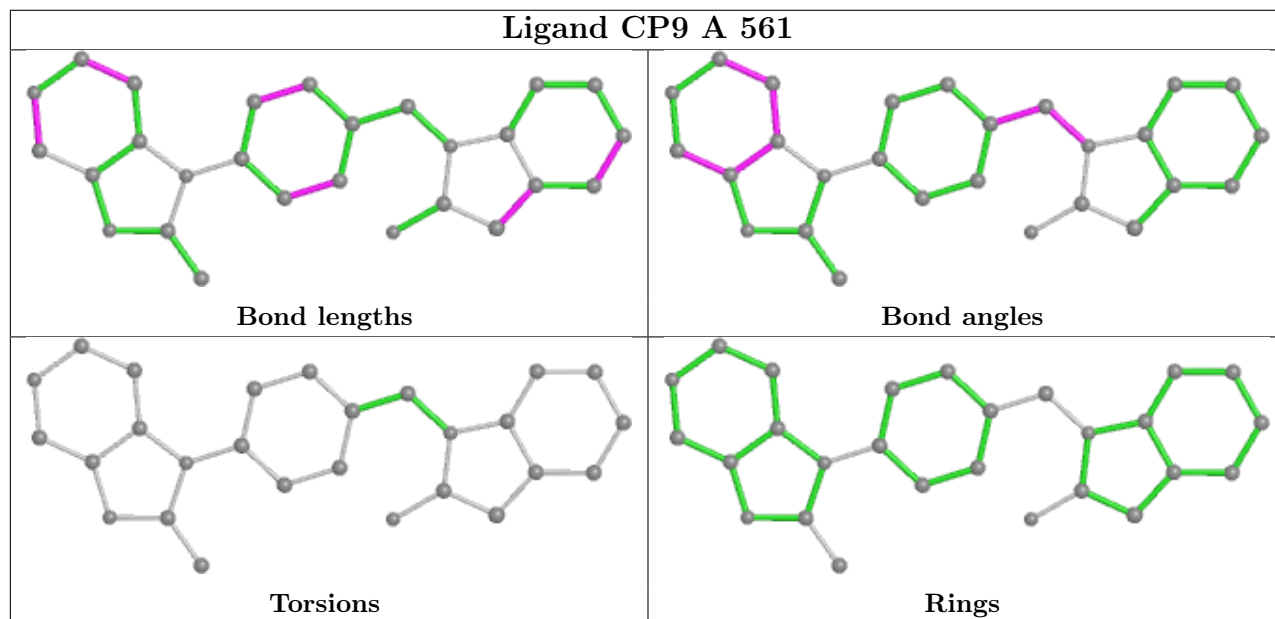
There are no torsion outliers.

There are no ring outliers.

1 monomer is involved in 7 short contacts:

Mol	Chain	Res	Type	Clashes	Symm-Clashes
3	A	561	CP9	7	0

The following is a two-dimensional graphical depiction of Mogul quality analysis of bond lengths, bond angles, torsion angles, and ring geometry for all instances of the Ligand of Interest. In addition, ligands with molecular weight > 250 and outliers as shown on the validation Tables will also be included. For torsion angles, if less than 5% of the Mogul distribution of torsion angles is within 10 degrees of the torsion angle in question, then that torsion angle is considered an outlier. Any bond that is central to one or more torsion angles identified as an outlier by Mogul will be highlighted in the graph. For rings, the root-mean-square deviation (RMSD) between the ring in question and similar rings identified by Mogul is calculated over all ring torsion angles. If the average RMSD is greater than 60 degrees and the minimal RMSD between the ring in question and any Mogul-identified rings is also greater than 60 degrees, then that ring is considered an outlier. The outliers are highlighted in purple. The color gray indicates Mogul did not find sufficient equivalents in the CSD to analyse the geometry.



5.7 Other polymers [i](#)

There are no such residues in this entry.

5.8 Polymer linkage issues

There are no chain breaks in this entry.

6 Fit of model and data

6.1 Protein, DNA and RNA chains

In the following table, the column labelled ‘#RSRZ > 2’ contains the number (and percentage) of RSRZ outliers, followed by percent RSRZ outliers for the chain as percentile scores relative to all X-ray entries and entries of similar resolution. The OWAB column contains the minimum, median, 95th percentile and maximum values of the occupancy-weighted average B-factor per residue. The column labelled ‘Q < 0.9’ lists the number of (and percentage) of residues with an average occupancy less than 0.9.

Mol	Chain	Analysed	<RSRZ>	#RSRZ>2	OWAB(Å ²)	Q<0.9
1	A	535/560 (95%)	0.16	26 (4%) 29 20	12, 59, 95, 107	0
2	B	411/440 (93%)	0.11	34 (8%) 11 6	4, 38, 99, 105	0
All	All	946/1000 (94%)	0.14	60 (6%) 20 12	4, 53, 98, 107	0

All (60) RSRZ outliers are listed below:

Mol	Chain	Res	Type	RSRZ
2	B	358	ARG	6.5
2	B	357	MET	5.9
2	B	67	ASP	4.5
2	B	359	GLY	4.2
2	B	283	LEU	4.1
2	B	231	GLY	4.1
2	B	362	THR	4.0
1	A	539	HIS	3.8
1	A	135	ILE	3.7
1	A	32	LYS	3.4
1	A	286	THR	3.3
2	B	356	ARG	3.1
1	A	69	THR	3.1
2	B	272	PRO	3.0
1	A	134	SER	3.0
2	B	282	LEU	2.9
2	B	315	HIS	2.9
1	A	133	PRO	2.9
2	B	294	PRO	2.9
2	B	312	GLU	2.9
1	A	225	PRO	2.9
1	A	137	ASN	2.9
2	B	240	THR	2.8
2	B	251	SER	2.8

Continued on next page...

Continued from previous page...

Mol	Chain	Res	Type	RSRZ
2	B	423	VAL	2.8
2	B	334	GLN	2.8
2	B	66	LYS	2.8
1	A	63	ILE	2.7
1	A	52	PRO	2.7
1	A	68	SER	2.7
1	A	183	TYR	2.6
1	A	285	GLY	2.6
1	A	66	LYS	2.5
2	B	285	GLY	2.5
1	A	140	PRO	2.5
1	A	139	THR	2.5
1	A	67	ASP	2.4
2	B	297	GLU	2.4
1	A	136	ASN	2.4
2	B	218	ASP	2.4
1	A	138	GLU	2.3
1	A	218	ASP	2.3
2	B	295	LEU	2.3
2	B	70	LYS	2.3
1	A	1	PRO	2.3
1	A	287	LYS	2.2
1	A	444	GLY	2.2
2	B	360	ALA	2.2
2	B	237	ASP	2.2
2	B	14	PRO	2.2
2	B	313	PRO	2.2
2	B	250	ASP	2.1
1	A	71	TRP	2.1
2	B	65	LYS	2.1
2	B	173	LYS	2.1
2	B	426	TRP	2.1
2	B	195	ILE	2.1
2	B	243	PRO	2.0
1	A	65	LYS	2.0
2	B	281	LYS	2.0

6.2 Non-standard residues in protein, DNA, RNA chains

There are no non-standard protein/DNA/RNA residues in this entry.

6.3 Carbohydrates [i](#)

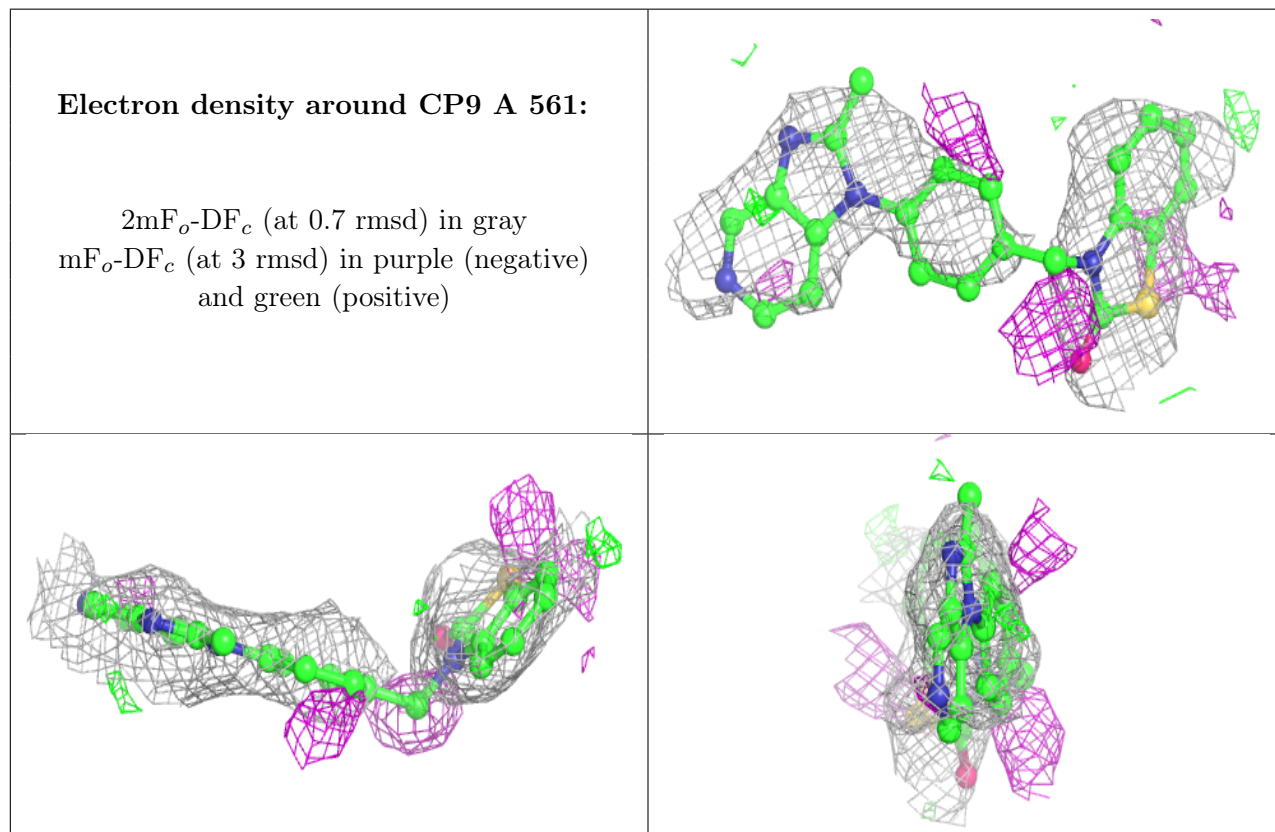
There are no monosaccharides in this entry.

6.4 Ligands [i](#)

In the following table, the Atoms column lists the number of modelled atoms in the group and the number defined in the chemical component dictionary. The B-factors column lists the minimum, median, 95th percentile and maximum values of B factors of atoms in the group. The column labelled 'Q< 0.9' lists the number of atoms with occupancy less than 0.9.

Mol	Type	Chain	Res	Atoms	RSCC	RSR	B-factors(Å ²)	Q<0.9
3	CP9	A	561	27/27	0.85	0.32	62,68,73,74	0

The following is a graphical depiction of the model fit to experimental electron density of all instances of the Ligand of Interest. In addition, ligands with molecular weight > 250 and outliers as shown on the geometry validation Tables will also be included. Each fit is shown from different orientation to approximate a three-dimensional view.



6.5 Other polymers [i](#)

There are no such residues in this entry.