



Full wwPDB EM Validation Report ⓘ

Apr 3, 2023 – 06:34 PM EDT

PDB ID : 7TP7
EMDB ID : EMD-26047
Title : Delta (B.1.617.2) SARS-CoV-2 variant spike protein (S-GSAS-Delta) in the 1-RBD-up conformation; Subclassification D11 state
Authors : Gobeil, S.; Acharya, P.
Deposited on : 2022-01-25
Resolution : 3.48 Å (reported)
Based on initial model : 7KDL

This is a Full wwPDB EM Validation Report for a publicly released PDB entry.

We welcome your comments at validation@mail.wwpdb.org

A user guide is available at

<https://www.wwpdb.org/validation/2017/EMValidationReportHelp>

with specific help available everywhere you see the ⓘ symbol.

The types of validation reports are described at

<http://www.wwpdb.org/validation/2017/FAQs#types>.

The following versions of software and data (see [references ⓘ](#)) were used in the production of this report:

EMDB validation analysis : 0.0.1.dev50
Mogul : 1.8.5 (274361), CSD as541be (2020)
MolProbity : 4.02b-467
Percentile statistics : 20191225.v01 (using entries in the PDB archive December 25th 2019)
MapQ : 1.9.9
Ideal geometry (proteins) : Engh & Huber (2001)
Ideal geometry (DNA, RNA) : Parkinson et al. (1996)
Validation Pipeline (wwPDB-VP) : 2.32.2

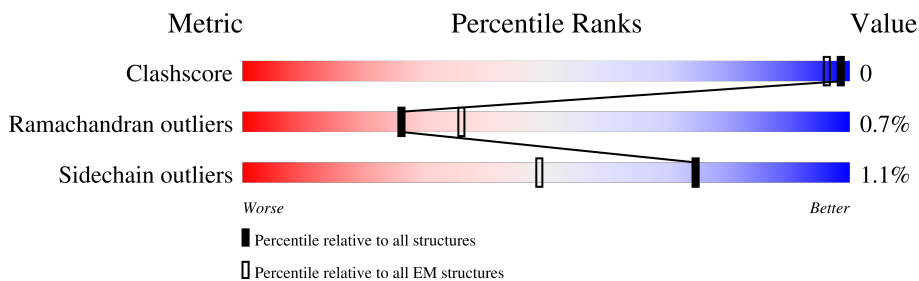
1 Overall quality at a glance

The following experimental techniques were used to determine the structure:

ELECTRON MICROSCOPY

The reported resolution of this entry is 3.48 Å.

Percentile scores (ranging between 0-100) for global validation metrics of the entry are shown in the following graphic. The table shows the number of entries on which the scores are based.



Metric	Whole archive (#Entries)	EM structures (#Entries)
Clashscore	158937	4297
Ramachandran outliers	154571	4023
Sidechain outliers	154315	3826

The table below summarises the geometric issues observed across the polymeric chains and their fit to the map. The red, orange, yellow and green segments of the bar indicate the fraction of residues that contain outliers for ≥ 3 , 2, 1 and 0 types of geometric quality criteria respectively. A grey segment represents the fraction of residues that are not modelled. The numeric value for each fraction is indicated below the corresponding segment, with a dot representing fractions $\leq 5\%$. The upper red bar (where present) indicates the fraction of residues that have poor fit to the EM map (all-atom inclusion $< 40\%$). The numeric value is given above the bar.

Mol	Chain	Length	Quality of chain
1	A	1286	
1	B	1286	
1	C	1286	
2	D	2	
2	E	2	
2	F	2	
2	G	2	
2	H	2	

Continued on next page...

Continued from previous page...

Mol	Chain	Length	Quality of chain
2	I	2	 100%
2	J	2	 100%
2	K	2	 50% 100%
2	L	2	 50% 100%
2	M	2	 100%
2	N	2	 100%
2	O	2	 100%

2 Entry composition i

There are 3 unique types of molecules in this entry. The entry contains 23199 atoms, of which 0 are hydrogens and 0 are deuteriums.

In the tables below, the AltConf column contains the number of residues with at least one atom in alternate conformation and the Trace column contains the number of residues modelled with at most 2 atoms.

- Molecule 1 is a protein called Spike glycoprotein.

Mol	Chain	Residues	Atoms					AltConf	Trace
			Total	C	N	O	S		
1	A	1005	7700	4932	1291	1443	34	0	0
1	B	975	7070	4495	1204	1339	32	0	0
1	C	1003	7617	4879	1281	1423	34	0	0

There are 279 discrepancies between the modelled and reference sequences:

Chain	Residue	Modelled	Actual	Comment	Reference
A	19	ARG	THR	engineered mutation	UNP P0DTC2
A	142	ASP	GLY	engineered mutation	UNP P0DTC2
A	?	-	GLU	deletion	UNP P0DTC2
A	?	-	PHE	deletion	UNP P0DTC2
A	158	GLY	ARG	engineered mutation	UNP P0DTC2
A	452	ARG	LEU	engineered mutation	UNP P0DTC2
A	478	LYS	THR	engineered mutation	UNP P0DTC2
A	614	GLY	ASP	engineered mutation	UNP P0DTC2
A	681	ARG	PRO	engineered mutation	UNP P0DTC2
A	682	GLY	ARG	engineered mutation	UNP P0DTC2
A	683	SER	ARG	engineered mutation	UNP P0DTC2
A	685	SER	ARG	engineered mutation	UNP P0DTC2
A	950	ASN	ASP	engineered mutation	UNP P0DTC2
A	1209	GLY	-	expression tag	UNP P0DTC2
A	1210	SER	-	expression tag	UNP P0DTC2
A	1211	GLY	-	expression tag	UNP P0DTC2
A	1212	TYR	-	expression tag	UNP P0DTC2
A	1213	ILE	-	expression tag	UNP P0DTC2
A	1214	PRO	-	expression tag	UNP P0DTC2
A	1215	GLU	-	expression tag	UNP P0DTC2
A	1216	ALA	-	expression tag	UNP P0DTC2
A	1217	PRO	-	expression tag	UNP P0DTC2
A	1218	ARG	-	expression tag	UNP P0DTC2
A	1219	ASP	-	expression tag	UNP P0DTC2

Continued on next page...

Continued from previous page...

Chain	Residue	Modelled	Actual	Comment	Reference
A	1220	GLY	-	expression tag	UNP P0DTC2
A	1221	GLN	-	expression tag	UNP P0DTC2
A	1222	ALA	-	expression tag	UNP P0DTC2
A	1223	TYR	-	expression tag	UNP P0DTC2
A	1224	VAL	-	expression tag	UNP P0DTC2
A	1225	ARG	-	expression tag	UNP P0DTC2
A	1226	LYS	-	expression tag	UNP P0DTC2
A	1227	ASP	-	expression tag	UNP P0DTC2
A	1228	GLY	-	expression tag	UNP P0DTC2
A	1229	GLU	-	expression tag	UNP P0DTC2
A	1230	TRP	-	expression tag	UNP P0DTC2
A	1231	VAL	-	expression tag	UNP P0DTC2
A	1232	LEU	-	expression tag	UNP P0DTC2
A	1233	LEU	-	expression tag	UNP P0DTC2
A	1234	SER	-	expression tag	UNP P0DTC2
A	1235	THR	-	expression tag	UNP P0DTC2
A	1236	PHE	-	expression tag	UNP P0DTC2
A	1237	LEU	-	expression tag	UNP P0DTC2
A	1238	GLY	-	expression tag	UNP P0DTC2
A	1239	ARG	-	expression tag	UNP P0DTC2
A	1240	SER	-	expression tag	UNP P0DTC2
A	1241	LEU	-	expression tag	UNP P0DTC2
A	1242	GLU	-	expression tag	UNP P0DTC2
A	1243	VAL	-	expression tag	UNP P0DTC2
A	1244	LEU	-	expression tag	UNP P0DTC2
A	1245	PHE	-	expression tag	UNP P0DTC2
A	1246	GLN	-	expression tag	UNP P0DTC2
A	1247	GLY	-	expression tag	UNP P0DTC2
A	1248	PRO	-	expression tag	UNP P0DTC2
A	1249	GLY	-	expression tag	UNP P0DTC2
A	1250	HIS	-	expression tag	UNP P0DTC2
A	1251	HIS	-	expression tag	UNP P0DTC2
A	1252	HIS	-	expression tag	UNP P0DTC2
A	1253	HIS	-	expression tag	UNP P0DTC2
A	1254	HIS	-	expression tag	UNP P0DTC2
A	1255	HIS	-	expression tag	UNP P0DTC2
A	1256	HIS	-	expression tag	UNP P0DTC2
A	1257	HIS	-	expression tag	UNP P0DTC2
A	1258	SER	-	expression tag	UNP P0DTC2
A	1259	ALA	-	expression tag	UNP P0DTC2
A	1260	TRP	-	expression tag	UNP P0DTC2
A	1261	SER	-	expression tag	UNP P0DTC2

Continued on next page...

Continued from previous page...

Chain	Residue	Modelled	Actual	Comment	Reference
A	1262	HIS	-	expression tag	UNP P0DTC2
A	1263	PRO	-	expression tag	UNP P0DTC2
A	1264	GLN	-	expression tag	UNP P0DTC2
A	1265	PHE	-	expression tag	UNP P0DTC2
A	1266	GLU	-	expression tag	UNP P0DTC2
A	1267	LYS	-	expression tag	UNP P0DTC2
A	1268	GLY	-	expression tag	UNP P0DTC2
A	1269	GLY	-	expression tag	UNP P0DTC2
A	1270	GLY	-	expression tag	UNP P0DTC2
A	1271	SER	-	expression tag	UNP P0DTC2
A	1272	GLY	-	expression tag	UNP P0DTC2
A	1273	GLY	-	expression tag	UNP P0DTC2
A	1274	GLY	-	expression tag	UNP P0DTC2
A	1275	GLY	-	expression tag	UNP P0DTC2
A	1276	SER	-	expression tag	UNP P0DTC2
A	1277	GLY	-	expression tag	UNP P0DTC2
A	1278	GLY	-	expression tag	UNP P0DTC2
A	1279	SER	-	expression tag	UNP P0DTC2
A	1280	ALA	-	expression tag	UNP P0DTC2
A	1281	TRP	-	expression tag	UNP P0DTC2
A	1282	SER	-	expression tag	UNP P0DTC2
A	1283	HIS	-	expression tag	UNP P0DTC2
A	1284	PRO	-	expression tag	UNP P0DTC2
A	1285	GLN	-	expression tag	UNP P0DTC2
A	1286	PHE	-	expression tag	UNP P0DTC2
A	1287	GLU	-	expression tag	UNP P0DTC2
A	1288	LYS	-	expression tag	UNP P0DTC2
B	19	ARG	THR	engineered mutation	UNP P0DTC2
B	142	ASP	GLY	engineered mutation	UNP P0DTC2
B	?	-	GLU	deletion	UNP P0DTC2
B	?	-	PHE	deletion	UNP P0DTC2
B	158	GLY	ARG	engineered mutation	UNP P0DTC2
B	452	ARG	LEU	engineered mutation	UNP P0DTC2
B	478	LYS	THR	engineered mutation	UNP P0DTC2
B	614	GLY	ASP	engineered mutation	UNP P0DTC2
B	681	ARG	PRO	engineered mutation	UNP P0DTC2
B	682	GLY	ARG	engineered mutation	UNP P0DTC2
B	683	SER	ARG	engineered mutation	UNP P0DTC2
B	685	SER	ARG	engineered mutation	UNP P0DTC2
B	950	ASN	ASP	engineered mutation	UNP P0DTC2
B	1209	GLY	-	expression tag	UNP P0DTC2
B	1210	SER	-	expression tag	UNP P0DTC2

Continued on next page...

Continued from previous page...

Chain	Residue	Modelled	Actual	Comment	Reference
B	1211	GLY	-	expression tag	UNP P0DTC2
B	1212	TYR	-	expression tag	UNP P0DTC2
B	1213	ILE	-	expression tag	UNP P0DTC2
B	1214	PRO	-	expression tag	UNP P0DTC2
B	1215	GLU	-	expression tag	UNP P0DTC2
B	1216	ALA	-	expression tag	UNP P0DTC2
B	1217	PRO	-	expression tag	UNP P0DTC2
B	1218	ARG	-	expression tag	UNP P0DTC2
B	1219	ASP	-	expression tag	UNP P0DTC2
B	1220	GLY	-	expression tag	UNP P0DTC2
B	1221	GLN	-	expression tag	UNP P0DTC2
B	1222	ALA	-	expression tag	UNP P0DTC2
B	1223	TYR	-	expression tag	UNP P0DTC2
B	1224	VAL	-	expression tag	UNP P0DTC2
B	1225	ARG	-	expression tag	UNP P0DTC2
B	1226	LYS	-	expression tag	UNP P0DTC2
B	1227	ASP	-	expression tag	UNP P0DTC2
B	1228	GLY	-	expression tag	UNP P0DTC2
B	1229	GLU	-	expression tag	UNP P0DTC2
B	1230	TRP	-	expression tag	UNP P0DTC2
B	1231	VAL	-	expression tag	UNP P0DTC2
B	1232	LEU	-	expression tag	UNP P0DTC2
B	1233	LEU	-	expression tag	UNP P0DTC2
B	1234	SER	-	expression tag	UNP P0DTC2
B	1235	THR	-	expression tag	UNP P0DTC2
B	1236	PHE	-	expression tag	UNP P0DTC2
B	1237	LEU	-	expression tag	UNP P0DTC2
B	1238	GLY	-	expression tag	UNP P0DTC2
B	1239	ARG	-	expression tag	UNP P0DTC2
B	1240	SER	-	expression tag	UNP P0DTC2
B	1241	LEU	-	expression tag	UNP P0DTC2
B	1242	GLU	-	expression tag	UNP P0DTC2
B	1243	VAL	-	expression tag	UNP P0DTC2
B	1244	LEU	-	expression tag	UNP P0DTC2
B	1245	PHE	-	expression tag	UNP P0DTC2
B	1246	GLN	-	expression tag	UNP P0DTC2
B	1247	GLY	-	expression tag	UNP P0DTC2
B	1248	PRO	-	expression tag	UNP P0DTC2
B	1249	GLY	-	expression tag	UNP P0DTC2
B	1250	HIS	-	expression tag	UNP P0DTC2
B	1251	HIS	-	expression tag	UNP P0DTC2
B	1252	HIS	-	expression tag	UNP P0DTC2

Continued on next page...

Continued from previous page...

Chain	Residue	Modelled	Actual	Comment	Reference
B	1253	HIS	-	expression tag	UNP P0DTC2
B	1254	HIS	-	expression tag	UNP P0DTC2
B	1255	HIS	-	expression tag	UNP P0DTC2
B	1256	HIS	-	expression tag	UNP P0DTC2
B	1257	HIS	-	expression tag	UNP P0DTC2
B	1258	SER	-	expression tag	UNP P0DTC2
B	1259	ALA	-	expression tag	UNP P0DTC2
B	1260	TRP	-	expression tag	UNP P0DTC2
B	1261	SER	-	expression tag	UNP P0DTC2
B	1262	HIS	-	expression tag	UNP P0DTC2
B	1263	PRO	-	expression tag	UNP P0DTC2
B	1264	GLN	-	expression tag	UNP P0DTC2
B	1265	PHE	-	expression tag	UNP P0DTC2
B	1266	GLU	-	expression tag	UNP P0DTC2
B	1267	LYS	-	expression tag	UNP P0DTC2
B	1268	GLY	-	expression tag	UNP P0DTC2
B	1269	GLY	-	expression tag	UNP P0DTC2
B	1270	GLY	-	expression tag	UNP P0DTC2
B	1271	SER	-	expression tag	UNP P0DTC2
B	1272	GLY	-	expression tag	UNP P0DTC2
B	1273	GLY	-	expression tag	UNP P0DTC2
B	1274	GLY	-	expression tag	UNP P0DTC2
B	1275	GLY	-	expression tag	UNP P0DTC2
B	1276	SER	-	expression tag	UNP P0DTC2
B	1277	GLY	-	expression tag	UNP P0DTC2
B	1278	GLY	-	expression tag	UNP P0DTC2
B	1279	SER	-	expression tag	UNP P0DTC2
B	1280	ALA	-	expression tag	UNP P0DTC2
B	1281	TRP	-	expression tag	UNP P0DTC2
B	1282	SER	-	expression tag	UNP P0DTC2
B	1283	HIS	-	expression tag	UNP P0DTC2
B	1284	PRO	-	expression tag	UNP P0DTC2
B	1285	GLN	-	expression tag	UNP P0DTC2
B	1286	PHE	-	expression tag	UNP P0DTC2
B	1287	GLU	-	expression tag	UNP P0DTC2
B	1288	LYS	-	expression tag	UNP P0DTC2
C	19	ARG	THR	engineered mutation	UNP P0DTC2
C	142	ASP	GLY	engineered mutation	UNP P0DTC2
C	?	-	GLU	deletion	UNP P0DTC2
C	?	-	PHE	deletion	UNP P0DTC2
C	158	GLY	ARG	engineered mutation	UNP P0DTC2
C	452	ARG	LEU	engineered mutation	UNP P0DTC2

Continued on next page...

Continued from previous page...

Chain	Residue	Modelled	Actual	Comment	Reference
C	478	LYS	THR	engineered mutation	UNP P0DTC2
C	614	GLY	ASP	engineered mutation	UNP P0DTC2
C	681	ARG	PRO	engineered mutation	UNP P0DTC2
C	682	GLY	ARG	engineered mutation	UNP P0DTC2
C	683	SER	ARG	engineered mutation	UNP P0DTC2
C	685	SER	ARG	engineered mutation	UNP P0DTC2
C	950	ASN	ASP	engineered mutation	UNP P0DTC2
C	1209	GLY	-	expression tag	UNP P0DTC2
C	1210	SER	-	expression tag	UNP P0DTC2
C	1211	GLY	-	expression tag	UNP P0DTC2
C	1212	TYR	-	expression tag	UNP P0DTC2
C	1213	ILE	-	expression tag	UNP P0DTC2
C	1214	PRO	-	expression tag	UNP P0DTC2
C	1215	GLU	-	expression tag	UNP P0DTC2
C	1216	ALA	-	expression tag	UNP P0DTC2
C	1217	PRO	-	expression tag	UNP P0DTC2
C	1218	ARG	-	expression tag	UNP P0DTC2
C	1219	ASP	-	expression tag	UNP P0DTC2
C	1220	GLY	-	expression tag	UNP P0DTC2
C	1221	GLN	-	expression tag	UNP P0DTC2
C	1222	ALA	-	expression tag	UNP P0DTC2
C	1223	TYR	-	expression tag	UNP P0DTC2
C	1224	VAL	-	expression tag	UNP P0DTC2
C	1225	ARG	-	expression tag	UNP P0DTC2
C	1226	LYS	-	expression tag	UNP P0DTC2
C	1227	ASP	-	expression tag	UNP P0DTC2
C	1228	GLY	-	expression tag	UNP P0DTC2
C	1229	GLU	-	expression tag	UNP P0DTC2
C	1230	TRP	-	expression tag	UNP P0DTC2
C	1231	VAL	-	expression tag	UNP P0DTC2
C	1232	LEU	-	expression tag	UNP P0DTC2
C	1233	LEU	-	expression tag	UNP P0DTC2
C	1234	SER	-	expression tag	UNP P0DTC2
C	1235	THR	-	expression tag	UNP P0DTC2
C	1236	PHE	-	expression tag	UNP P0DTC2
C	1237	LEU	-	expression tag	UNP P0DTC2
C	1238	GLY	-	expression tag	UNP P0DTC2
C	1239	ARG	-	expression tag	UNP P0DTC2
C	1240	SER	-	expression tag	UNP P0DTC2
C	1241	LEU	-	expression tag	UNP P0DTC2
C	1242	GLU	-	expression tag	UNP P0DTC2
C	1243	VAL	-	expression tag	UNP P0DTC2

Continued on next page...

Continued from previous page...

Chain	Residue	Modelled	Actual	Comment	Reference
C	1244	LEU	-	expression tag	UNP P0DTC2
C	1245	PHE	-	expression tag	UNP P0DTC2
C	1246	GLN	-	expression tag	UNP P0DTC2
C	1247	GLY	-	expression tag	UNP P0DTC2
C	1248	PRO	-	expression tag	UNP P0DTC2
C	1249	GLY	-	expression tag	UNP P0DTC2
C	1250	HIS	-	expression tag	UNP P0DTC2
C	1251	HIS	-	expression tag	UNP P0DTC2
C	1252	HIS	-	expression tag	UNP P0DTC2
C	1253	HIS	-	expression tag	UNP P0DTC2
C	1254	HIS	-	expression tag	UNP P0DTC2
C	1255	HIS	-	expression tag	UNP P0DTC2
C	1256	HIS	-	expression tag	UNP P0DTC2
C	1257	HIS	-	expression tag	UNP P0DTC2
C	1258	SER	-	expression tag	UNP P0DTC2
C	1259	ALA	-	expression tag	UNP P0DTC2
C	1260	TRP	-	expression tag	UNP P0DTC2
C	1261	SER	-	expression tag	UNP P0DTC2
C	1262	HIS	-	expression tag	UNP P0DTC2
C	1263	PRO	-	expression tag	UNP P0DTC2
C	1264	GLN	-	expression tag	UNP P0DTC2
C	1265	PHE	-	expression tag	UNP P0DTC2
C	1266	GLU	-	expression tag	UNP P0DTC2
C	1267	LYS	-	expression tag	UNP P0DTC2
C	1268	GLY	-	expression tag	UNP P0DTC2
C	1269	GLY	-	expression tag	UNP P0DTC2
C	1270	GLY	-	expression tag	UNP P0DTC2
C	1271	SER	-	expression tag	UNP P0DTC2
C	1272	GLY	-	expression tag	UNP P0DTC2
C	1273	GLY	-	expression tag	UNP P0DTC2
C	1274	GLY	-	expression tag	UNP P0DTC2
C	1275	GLY	-	expression tag	UNP P0DTC2
C	1276	SER	-	expression tag	UNP P0DTC2
C	1277	GLY	-	expression tag	UNP P0DTC2
C	1278	GLY	-	expression tag	UNP P0DTC2
C	1279	SER	-	expression tag	UNP P0DTC2
C	1280	ALA	-	expression tag	UNP P0DTC2
C	1281	TRP	-	expression tag	UNP P0DTC2
C	1282	SER	-	expression tag	UNP P0DTC2
C	1283	HIS	-	expression tag	UNP P0DTC2
C	1284	PRO	-	expression tag	UNP P0DTC2
C	1285	GLN	-	expression tag	UNP P0DTC2

Continued on next page...

Continued from previous page...

Chain	Residue	Modelled	Actual	Comment	Reference
C	1286	PHE	-	expression tag	UNP P0DTC2
C	1287	GLU	-	expression tag	UNP P0DTC2
C	1288	LYS	-	expression tag	UNP P0DTC2

- Molecule 2 is an oligosaccharide called 2-acetamido-2-deoxy-beta-D-glucopyranose-(1-4)-2-acetamido-2-deoxy-beta-D-glucopyranose.



Mol	Chain	Residues	Atoms				AltConf	Trace
			Total	C	N	O		
2	D	2	28	16	2	10	0	0
2	E	2	28	16	2	10	0	0
2	F	2	28	16	2	10	0	0
2	G	2	28	16	2	10	0	0
2	H	2	28	16	2	10	0	0
2	I	2	28	16	2	10	0	0
2	J	2	28	16	2	10	0	0
2	K	2	28	16	2	10	0	0
2	L	2	28	16	2	10	0	0
2	M	2	28	16	2	10	0	0
2	N	2	28	16	2	10	0	0
2	O	2	28	16	2	10	0	0

- Molecule 3 is 2-acetamido-2-deoxy-beta-D-glucopyranose (three-letter code: NAG) (formula: C₈H₁₅NO₆).



Mol	Chain	Residues	Atoms				AltConf
			Total	C	N	O	
3	A	1	Total	C	N	O	0
			14	8	1	5	
3	A	1	Total	C	N	O	0
			14	8	1	5	
3	A	1	Total	C	N	O	0
			14	8	1	5	
3	A	1	Total	C	N	O	0
			14	8	1	5	
3	A	1	Total	C	N	O	0
			14	8	1	5	
3	A	1	Total	C	N	O	0
			14	8	1	5	
3	A	1	Total	C	N	O	0
			14	8	1	5	
3	A	1	Total	C	N	O	0
			14	8	1	5	
3	B	1	Total	C	N	O	0
			14	8	1	5	
3	B	1	Total	C	N	O	0
			14	8	1	5	
3	B	1	Total	C	N	O	0
			14	8	1	5	
3	B	1	Total	C	N	O	0
			14	8	1	5	

Continued on next page...

Continued from previous page...

Mol	Chain	Residues	Atoms				AltConf
			Total	C	N	O	
3	B	1	Total 14	C 8	N 1	O 5	0
3	B	1	Total 14	C 8	N 1	O 5	0
3	B	1	Total 14	C 8	N 1	O 5	0
3	B	1	Total 14	C 8	N 1	O 5	0
3	B	1	Total 14	C 8	N 1	O 5	0
3	B	1	Total 14	C 8	N 1	O 5	0
3	B	1	Total 14	C 8	N 1	O 5	0
3	B	1	Total 14	C 8	N 1	O 5	0
3	B	1	Total 14	C 8	N 1	O 5	0
3	C	1	Total 14	C 8	N 1	O 5	0
3	C	1	Total 14	C 8	N 1	O 5	0
3	C	1	Total 14	C 8	N 1	O 5	0
3	C	1	Total 14	C 8	N 1	O 5	0
3	C	1	Total 14	C 8	N 1	O 5	0
3	C	1	Total 14	C 8	N 1	O 5	0
3	C	1	Total 14	C 8	N 1	O 5	0
3	C	1	Total 14	C 8	N 1	O 5	0
3	C	1	Total 14	C 8	N 1	O 5	0
3	C	1	Total 14	C 8	N 1	O 5	0
3	C	1	Total 14	C 8	N 1	O 5	0
3	C	1	Total 14	C 8	N 1	O 5	0

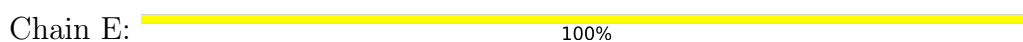
GLY
PHE
GLU
LYS

- Molecule 2: 2-acetamido-2-deoxy-beta-D-glucopyranose-(1-4)-2-acetamido-2-deoxy-beta-D-glucopyranose



MAG1
MAG2

- Molecule 2: 2-acetamido-2-deoxy-beta-D-glucopyranose-(1-4)-2-acetamido-2-deoxy-beta-D-glucopyranose



MAG1
MAG2

- Molecule 2: 2-acetamido-2-deoxy-beta-D-glucopyranose-(1-4)-2-acetamido-2-deoxy-beta-D-glucopyranose



MAG1
MAG2

- Molecule 2: 2-acetamido-2-deoxy-beta-D-glucopyranose-(1-4)-2-acetamido-2-deoxy-beta-D-glucopyranose



MAG1
MAG2

- Molecule 2: 2-acetamido-2-deoxy-beta-D-glucopyranose-(1-4)-2-acetamido-2-deoxy-beta-D-glucopyranose




MAG1
MAG2

- Molecule 2: 2-acetamido-2-deoxy-beta-D-glucopyranose-(1-4)-2-acetamido-2-deoxy-beta-D-glucopyranose



MAG1
MAG2

- Molecule 2: 2-acetamido-2-deoxy-beta-D-glucopyranose-(1-4)-2-acetamido-2-deoxy-beta-D-glucopyranose

Chain J:  100%

MAG1
MAG2

- Molecule 2: 2-acetamido-2-deoxy-beta-D-glucopyranose-(1-4)-2-acetamido-2-deoxy-beta-D-glucopyranose

Chain K:  50%
100%

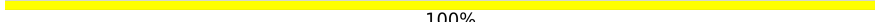
♦
MAG1
MAG2

- Molecule 2: 2-acetamido-2-deoxy-beta-D-glucopyranose-(1-4)-2-acetamido-2-deoxy-beta-D-glucopyranose

Chain L:  50%
100%

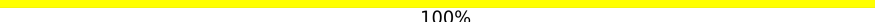
♦
MAG1
MAG2

- Molecule 2: 2-acetamido-2-deoxy-beta-D-glucopyranose-(1-4)-2-acetamido-2-deoxy-beta-D-glucopyranose

Chain M:  100%

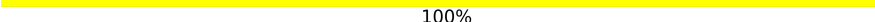
MAG1
MAG2

- Molecule 2: 2-acetamido-2-deoxy-beta-D-glucopyranose-(1-4)-2-acetamido-2-deoxy-beta-D-glucopyranose

Chain N:  100%

MAG1
MAG2

- Molecule 2: 2-acetamido-2-deoxy-beta-D-glucopyranose-(1-4)-2-acetamido-2-deoxy-beta-D-glucopyranose

Chain O:  100%

MAG1
MAG2

4 Experimental information

Property	Value	Source
EM reconstruction method	SINGLE PARTICLE	Depositor
Imposed symmetry	POINT, Not provided	
Number of particles used	123326	Depositor
Resolution determination method	FSC 0.143 CUT-OFF	Depositor
CTF correction method	PHASE FLIPPING AND AMPLITUDE CORRECTION	Depositor
Microscope	FEI TITAN KRIOS	Depositor
Voltage (kV)	300	Depositor
Electron dose ($e^-/\text{\AA}^2$)	55	Depositor
Minimum defocus (nm)	750	Depositor
Maximum defocus (nm)	2500	Depositor
Magnification	Not provided	
Image detector	GATAN K3 (6k x 4k)	Depositor
Maximum map value	3.691	Depositor
Minimum map value	-1.074	Depositor
Average map value	-0.003	Depositor
Map value standard deviation	0.138	Depositor
Recommended contour level	0.8	Depositor
Map size (Å)	324.0, 324.0, 324.0	wwPDB
Map dimensions	300, 300, 300	wwPDB
Map angles (°)	90.0, 90.0, 90.0	wwPDB
Pixel spacing (Å)	1.08, 1.08, 1.08	Depositor

5 Model quality [i](#)

5.1 Standard geometry [i](#)

Bond lengths and bond angles in the following residue types are not validated in this section: NAG

The Z score for a bond length (or angle) is the number of standard deviations the observed value is removed from the expected value. A bond length (or angle) with $|Z| > 5$ is considered an outlier worth inspection. RMSZ is the root-mean-square of all Z scores of the bond lengths (or angles).

Mol	Chain	Bond lengths		Bond angles	
		RMSZ	# Z >5	RMSZ	# Z >5
1	A	0.64	0/7871	0.94	27/10725 (0.3%)
1	B	0.60	0/7210	0.94	20/9846 (0.2%)
1	C	0.64	0/7789	0.94	18/10624 (0.2%)
All	All	0.63	0/22870	0.94	65/31195 (0.2%)

Chiral center outliers are detected by calculating the chiral volume of a chiral center and verifying if the center is modelled as a planar moiety or with the opposite hand. A planarity outlier is detected by checking planarity of atoms in a peptide group, atoms in a mainchain group or atoms of a sidechain that are expected to be planar.

Mol	Chain	#Chirality outliers	#Planarity outliers
1	A	0	3
1	B	0	1
1	C	0	3
All	All	0	7

There are no bond length outliers.

All (65) bond angle outliers are listed below:

Mol	Chain	Res	Type	Atoms	Z	Observed(°)	Ideal(°)
1	B	212	LEU	CB-CG-CD1	12.61	132.43	111.00
1	C	995	ARG	NE-CZ-NH1	8.63	124.61	120.30
1	B	577	ARG	NE-CZ-NH1	8.10	124.35	120.30
1	A	509	ARG	NE-CZ-NH1	7.77	124.18	120.30
1	B	1014	ARG	NE-CZ-NH1	7.71	124.15	120.30
1	C	577	ARG	NE-CZ-NH1	7.34	123.97	120.30
1	A	904	TYR	CB-CG-CD2	-7.30	116.62	121.00
1	B	34	ARG	NE-CZ-NH1	7.09	123.84	120.30
1	C	403	ARG	NE-CZ-NH1	6.97	123.79	120.30
1	B	1019	ARG	NE-CZ-NH1	6.96	123.78	120.30

Continued on next page...

Continued from previous page...

Mol	Chain	Res	Type	Atoms	Z	Observed(°)	Ideal(°)
1	A	408	ARG	NE-CZ-NH1	6.92	123.76	120.30
1	B	815	ARG	NE-CZ-NH1	6.86	123.73	120.30
1	A	567	ARG	NE-CZ-NH1	6.85	123.72	120.30
1	A	237	ARG	NE-CZ-NH1	6.83	123.72	120.30
1	A	319	ARG	NE-CZ-NH1	6.79	123.69	120.30
1	B	904	TYR	CB-CG-CD2	-6.78	116.93	121.00
1	C	815	ARG	NE-CZ-NH1	6.78	123.69	120.30
1	A	621	PRO	CA-N-CD	-6.76	102.03	111.50
1	A	454	ARG	NE-CZ-NH1	6.65	123.62	120.30
1	C	904	TYR	CB-CG-CD2	-6.60	117.04	121.00
1	C	454	ARG	NE-CZ-NH1	6.57	123.58	120.30
1	A	457	ARG	NE-CZ-NH1	6.55	123.58	120.30
1	C	1014	ARG	NE-CZ-NH1	6.44	123.52	120.30
1	C	328	ARG	NE-CZ-NH1	6.44	123.52	120.30
1	B	621	PRO	CA-N-CD	-6.42	102.51	111.50
1	A	1019	ARG	NE-CZ-NH1	6.39	123.50	120.30
1	B	190	ARG	NE-CZ-NH1	6.33	123.47	120.30
1	A	1014	ARG	NE-CZ-NH1	6.33	123.47	120.30
1	A	273	ARG	NE-CZ-NH1	6.32	123.46	120.30
1	C	237	ARG	NE-CZ-NH1	6.31	123.46	120.30
1	B	452	ARG	NE-CZ-NH1	6.27	123.44	120.30
1	B	273	ARG	NE-CZ-NH1	6.25	123.42	120.30
1	A	815	ARG	NE-CZ-NH1	6.21	123.41	120.30
1	B	44	ARG	NE-CZ-NH1	6.15	123.37	120.30
1	C	646	ARG	NE-CZ-NH1	6.07	123.33	120.30
1	B	567	ARG	NE-CZ-NH1	6.04	123.32	120.30
1	A	34	ARG	NE-CZ-NH1	5.97	123.29	120.30
1	A	634	ARG	NE-CZ-NH1	5.91	123.26	120.30
1	A	995	ARG	NE-CZ-NH1	5.89	123.24	120.30
1	B	634	ARG	NE-CZ-NH1	5.88	123.24	120.30
1	A	328	ARG	NE-CZ-NH1	5.86	123.23	120.30
1	B	995	ARG	NE-CZ-NH1	5.77	123.19	120.30
1	A	357	ARG	NE-CZ-NH1	5.77	123.19	120.30
1	A	403	ARG	NE-CZ-NH1	5.62	123.11	120.30
1	C	567	ARG	NE-CZ-NH1	5.62	123.11	120.30
1	C	273	ARG	NE-CZ-NH1	5.61	123.11	120.30
1	C	1107	ARG	NE-CZ-NH1	5.59	123.09	120.30
1	A	190	ARG	NE-CZ-NH1	5.50	123.05	120.30
1	A	1039	ARG	NE-CZ-NH1	5.49	123.05	120.30
1	C	357	ARG	NE-CZ-NH1	5.41	123.00	120.30
1	C	634	ARG	NE-CZ-NH1	5.41	123.00	120.30
1	B	559	PHE	CB-CG-CD2	-5.39	117.03	120.80

Continued on next page...

Continued from previous page...

Mol	Chain	Res	Type	Atoms	Z	Observed(°)	Ideal(°)
1	B	328	ARG	NE-CZ-NH1	5.34	122.97	120.30
1	C	1019	ARG	NE-CZ-NH1	5.31	122.95	120.30
1	C	44	ARG	NE-CZ-NH1	5.27	122.93	120.30
1	A	904	TYR	CB-CG-CD1	5.25	124.15	121.00
1	B	815	ARG	NE-CZ-NH2	-5.24	117.68	120.30
1	A	983	ARG	NE-CZ-NH1	5.18	122.89	120.30
1	A	451	TYR	CB-CG-CD2	-5.10	117.94	121.00
1	B	765	ARG	NE-CZ-NH1	5.09	122.85	120.30
1	A	1000	ARG	NE-CZ-NH1	5.08	122.84	120.30
1	A	1039	ARG	NE-CZ-NH2	-5.08	117.76	120.30
1	C	815	ARG	NE-CZ-NH2	-5.06	117.77	120.30
1	B	237	ARG	NE-CZ-NH1	5.02	122.81	120.30
1	A	815	ARG	NE-CZ-NH2	-5.00	117.80	120.30

There are no chirality outliers.

All (7) planarity outliers are listed below:

Mol	Chain	Res	Type	Group
1	A	1091	ARG	Sidechain
1	A	269	TYR	Sidechain
1	A	328	ARG	Sidechain
1	B	273	ARG	Sidechain
1	C	351	TYR	Sidechain
1	C	466	ARG	Sidechain
1	C	635	VAL	Peptide

5.2 Too-close contacts [\(i\)](#)

In the following table, the Non-H and H(model) columns list the number of non-hydrogen atoms and hydrogen atoms in the chain respectively. The H(added) column lists the number of hydrogen atoms added and optimized by MolProbity. The Clashes column lists the number of clashes within the asymmetric unit, whereas Symm-Clashes lists symmetry-related clashes.

Mol	Chain	Non-H	H(model)	H(added)	Clashes	Symm-Clashes
1	A	7700	0	7423	1	0
1	B	7070	0	6516	2	0
1	C	7617	0	7276	3	0
2	D	28	0	25	1	0
2	E	28	0	25	0	0
2	F	28	0	25	0	0
2	G	28	0	25	0	0

Continued on next page...

Continued from previous page...

Mol	Chain	Non-H	H(model)	H(added)	Clashes	Symm-Clashes
2	H	28	0	25	0	0
2	I	28	0	25	0	0
2	J	28	0	25	0	0
2	K	28	0	25	0	0
2	L	28	0	25	0	0
2	M	28	0	25	0	0
2	N	28	0	25	0	0
2	O	28	0	25	0	0
3	A	140	0	130	0	0
3	B	168	0	156	0	0
3	C	168	0	156	0	0
All	All	23199	0	21957	6	0

The all-atom clashscore is defined as the number of clashes found per 1000 atoms (including hydrogen atoms). The all-atom clashscore for this structure is 0.

All (6) close contacts within the same asymmetric unit are listed below, sorted by their clash magnitude.

Atom-1	Atom-2	Interatomic distance (Å)	Clash overlap (Å)
1:C:360:ASN:H	1:C:523:THR:HG22	1.74	0.52
1:C:462:LYS:N	2:D:2:NAG:HO6	2.13	0.46
1:B:294:ASP:HA	1:B:633:TRP:CE3	2.52	0.44
1:B:98:SER:HG	1:B:263:ALA:N	2.16	0.43
1:A:630:THR:HB	1:A:631:PRO:HD2	2.01	0.42
1:C:599:THR:HG22	1:C:601:GLY:H	1.84	0.41

There are no symmetry-related clashes.

5.3 Torsion angles [i](#)

5.3.1 Protein backbone [i](#)

In the following table, the Percentiles column shows the percent Ramachandran outliers of the chain as a percentile score with respect to all PDB entries followed by that with respect to all EM entries.

The Analysed column shows the number of residues for which the backbone conformation was analysed, and the total number of residues.

Mol	Chain	Analysed	Favoured	Allowed	Outliers	Percentiles
1	A	983/1286 (76%)	918 (93%)	63 (6%)	2 (0%)	47 80
1	B	953/1286 (74%)	869 (91%)	72 (8%)	12 (1%)	12 45
1	C	985/1286 (77%)	908 (92%)	71 (7%)	6 (1%)	25 63
All	All	2921/3858 (76%)	2695 (92%)	206 (7%)	20 (1%)	26 60

All (20) Ramachandran outliers are listed below:

Mol	Chain	Res	Type
1	A	621	PRO
1	B	621	PRO
1	B	97	LYS
1	B	442	ASP
1	C	112	SER
1	C	448	ASN
1	C	640	SER
1	A	486	PHE
1	B	198	ASP
1	B	421	TYR
1	B	410	ILE
1	B	626	ALA
1	C	97	LYS
1	C	110	LEU
1	B	496	GLY
1	B	814	LYS
1	C	571	ASP
1	B	110	LEU
1	B	544	ASN
1	B	524	VAL

5.3.2 Protein sidechains [i](#)

In the following table, the Percentiles column shows the percent sidechain outliers of the chain as a percentile score with respect to all PDB entries followed by that with respect to all EM entries.

The Analysed column shows the number of residues for which the sidechain conformation was analysed, and the total number of residues.

Mol	Chain	Analysed	Rotameric	Outliers	Percentiles
1	A	834/1110 (75%)	824 (99%)	10 (1%)	71 87
1	B	704/1110 (63%)	695 (99%)	9 (1%)	69 86

Continued on next page...

Continued from previous page...

Mol	Chain	Analysed	Rotameric	Outliers	Percentiles	
1	C	811/1110 (73%)	804 (99%)	7 (1%)	78	91
All	All	2349/3330 (70%)	2323 (99%)	26 (1%)	74	88

All (26) residues with a non-rotameric sidechain are listed below:

Mol	Chain	Res	Type
1	A	96	GLU
1	A	294	ASP
1	A	318	PHE
1	A	489	TYR
1	A	546	LEU
1	A	634	ARG
1	A	637	SER
1	A	739	THR
1	A	760	CYS
1	A	1082	CYS
1	B	122	ASN
1	B	212	LEU
1	B	214	ARG
1	B	621	PRO
1	B	634	ARG
1	B	638	THR
1	B	738	CYS
1	B	907	ASN
1	B	916	LEU
1	C	360	ASN
1	C	565	PHE
1	C	628	GLN
1	C	634	ARG
1	C	907	ASN
1	C	916	LEU
1	C	1082	CYS

Sometimes sidechains can be flipped to improve hydrogen bonding and reduce clashes. There are no such sidechains identified.

5.3.3 RNA ⓘ

There are no RNA molecules in this entry.

5.4 Non-standard residues in protein, DNA, RNA chains [i](#)

There are no non-standard protein/DNA/RNA residues in this entry.

5.5 Carbohydrates [i](#)

24 monosaccharides are modelled in this entry.

In the following table, the Counts columns list the number of bonds (or angles) for which Mogul statistics could be retrieved, the number of bonds (or angles) that are observed in the model and the number of bonds (or angles) that are defined in the Chemical Component Dictionary. The Link column lists molecule types, if any, to which the group is linked. The Z score for a bond length (or angle) is the number of standard deviations the observed value is removed from the expected value. A bond length (or angle) with $|Z| > 2$ is considered an outlier worth inspection. RMSZ is the root-mean-square of all Z scores of the bond lengths (or angles).

Mol	Type	Chain	Res	Link	Bond lengths			Bond angles		
					Counts	RMSZ	# Z > 2	Counts	RMSZ	# Z > 2
2	NAG	D	1	2,1	14,14,15	1.55	4 (28%)	17,19,21	0.82	1 (5%)
2	NAG	D	2	2	14,14,15	1.38	3 (21%)	17,19,21	1.06	1 (5%)
2	NAG	E	1	2,1	14,14,15	1.15	2 (14%)	17,19,21	0.74	0
2	NAG	E	2	2	14,14,15	1.20	1 (7%)	17,19,21	0.82	1 (5%)
2	NAG	F	1	2,1	14,14,15	1.26	2 (14%)	17,19,21	0.68	0
2	NAG	F	2	2	14,14,15	1.16	1 (7%)	17,19,21	0.85	1 (5%)
2	NAG	G	1	2,1	14,14,15	1.13	1 (7%)	17,19,21	1.02	1 (5%)
2	NAG	G	2	2	14,14,15	1.20	1 (7%)	17,19,21	0.78	0
2	NAG	H	1	2,1	14,14,15	1.21	1 (7%)	17,19,21	0.76	1 (5%)
2	NAG	H	2	2	14,14,15	1.25	2 (14%)	17,19,21	0.78	0
2	NAG	I	1	2,1	14,14,15	1.02	0	17,19,21	0.97	1 (5%)
2	NAG	I	2	2	14,14,15	1.23	2 (14%)	17,19,21	0.81	1 (5%)
2	NAG	J	1	2,1	14,14,15	1.20	2 (14%)	17,19,21	0.76	1 (5%)
2	NAG	J	2	2	14,14,15	1.19	1 (7%)	17,19,21	1.03	1 (5%)
2	NAG	K	1	2,1	14,14,15	1.23	2 (14%)	17,19,21	0.53	0
2	NAG	K	2	2	14,14,15	1.18	1 (7%)	17,19,21	0.87	1 (5%)
2	NAG	L	1	2,1	14,14,15	1.18	1 (7%)	17,19,21	0.63	0
2	NAG	L	2	2	14,14,15	1.18	1 (7%)	17,19,21	0.86	1 (5%)
2	NAG	M	1	2,1	14,14,15	1.09	1 (7%)	17,19,21	0.68	0
2	NAG	M	2	2	14,14,15	1.15	1 (7%)	17,19,21	0.79	0
2	NAG	N	1	2,1	14,14,15	1.18	1 (7%)	17,19,21	0.92	0
2	NAG	N	2	2	14,14,15	1.15	1 (7%)	17,19,21	0.73	0

Mol	Type	Chain	Res	Link	Bond lengths			Bond angles		
					Counts	RMSZ	# Z > 2	Counts	RMSZ	# Z > 2
2	NAG	O	1	2,1	14,14,15	1.24	2 (14%)	17,19,21	0.69	0
2	NAG	O	2	2	14,14,15	1.20	1 (7%)	17,19,21	0.91	1 (5%)

In the following table, the Chirals column lists the number of chiral outliers, the number of chiral centers analysed, the number of these observed in the model and the number defined in the Chemical Component Dictionary. Similar counts are reported in the Torsion and Rings columns. '-' means no outliers of that kind were identified.

Mol	Type	Chain	Res	Link	Chirals	Torsions	Rings
2	NAG	D	1	2,1	-	0/6/23/26	0/1/1/1
2	NAG	D	2	2	-	2/6/23/26	0/1/1/1
2	NAG	E	1	2,1	-	0/6/23/26	0/1/1/1
2	NAG	E	2	2	-	0/6/23/26	0/1/1/1
2	NAG	F	1	2,1	-	0/6/23/26	0/1/1/1
2	NAG	F	2	2	-	0/6/23/26	0/1/1/1
2	NAG	G	1	2,1	-	0/6/23/26	0/1/1/1
2	NAG	G	2	2	-	0/6/23/26	0/1/1/1
2	NAG	H	1	2,1	-	0/6/23/26	0/1/1/1
2	NAG	H	2	2	-	0/6/23/26	0/1/1/1
2	NAG	I	1	2,1	-	0/6/23/26	0/1/1/1
2	NAG	I	2	2	-	0/6/23/26	0/1/1/1
2	NAG	J	1	2,1	-	0/6/23/26	0/1/1/1
2	NAG	J	2	2	-	0/6/23/26	0/1/1/1
2	NAG	K	1	2,1	-	0/6/23/26	0/1/1/1
2	NAG	K	2	2	-	0/6/23/26	0/1/1/1
2	NAG	L	1	2,1	-	0/6/23/26	0/1/1/1
2	NAG	L	2	2	-	0/6/23/26	0/1/1/1
2	NAG	M	1	2,1	-	0/6/23/26	0/1/1/1
2	NAG	M	2	2	-	0/6/23/26	0/1/1/1
2	NAG	N	1	2,1	-	0/6/23/26	0/1/1/1
2	NAG	N	2	2	-	0/6/23/26	0/1/1/1
2	NAG	O	1	2,1	-	0/6/23/26	0/1/1/1
2	NAG	O	2	2	-	0/6/23/26	0/1/1/1

All (35) bond length outliers are listed below:

Mol	Chain	Res	Type	Atoms	Z	Observed(Å)	Ideal(Å)
2	D	2	NAG	O5-C1	2.92	1.48	1.43
2	D	1	NAG	O5-C5	2.89	1.49	1.43
2	H	2	NAG	O5-C5	2.83	1.49	1.43
2	I	2	NAG	O5-C5	2.81	1.49	1.43
2	G	2	NAG	O5-C5	2.80	1.49	1.43

Continued on next page...

Continued from previous page...

Mol	Chain	Res	Type	Atoms	Z	Observed(Å)	Ideal(Å)
2	D	2	NAG	O5-C5	2.71	1.48	1.43
2	M	2	NAG	O5-C5	2.69	1.48	1.43
2	K	2	NAG	O5-C5	2.69	1.48	1.43
2	J	2	NAG	O5-C5	2.67	1.48	1.43
2	D	1	NAG	O4-C4	2.63	1.49	1.43
2	L	2	NAG	O5-C5	2.60	1.48	1.43
2	O	2	NAG	O5-C5	2.55	1.48	1.43
2	N	2	NAG	O5-C5	2.54	1.48	1.43
2	F	1	NAG	O5-C5	2.47	1.48	1.43
2	N	1	NAG	O5-C5	2.45	1.48	1.43
2	G	1	NAG	O5-C5	2.42	1.48	1.43
2	J	1	NAG	O5-C5	2.40	1.48	1.43
2	D	1	NAG	C1-C2	2.39	1.55	1.52
2	F	2	NAG	O5-C5	2.39	1.48	1.43
2	E	2	NAG	O5-C5	2.35	1.48	1.43
2	F	1	NAG	O4-C4	2.35	1.48	1.43
2	O	1	NAG	O5-C5	2.31	1.48	1.43
2	L	1	NAG	O5-C5	2.29	1.48	1.43
2	E	1	NAG	O5-C5	2.28	1.48	1.43
2	K	1	NAG	O5-C5	2.26	1.48	1.43
2	D	1	NAG	O5-C1	2.19	1.47	1.43
2	H	1	NAG	O5-C5	2.15	1.47	1.43
2	M	1	NAG	O5-C5	2.13	1.47	1.43
2	E	1	NAG	O4-C4	2.13	1.48	1.43
2	K	1	NAG	O4-C4	2.09	1.47	1.43
2	O	1	NAG	O4-C4	2.09	1.47	1.43
2	H	2	NAG	O5-C1	2.08	1.47	1.43
2	I	2	NAG	O5-C1	2.04	1.47	1.43
2	D	2	NAG	C1-C2	2.03	1.55	1.52
2	J	1	NAG	O4-C4	2.03	1.47	1.43

All (13) bond angle outliers are listed below:

Mol	Chain	Res	Type	Atoms	Z	Observed(°)	Ideal(°)
2	D	2	NAG	C1-O5-C5	3.75	117.28	112.19
2	D	1	NAG	C1-O5-C5	2.94	116.18	112.19
2	O	2	NAG	C1-O5-C5	2.87	116.08	112.19
2	J	2	NAG	C1-O5-C5	2.58	115.68	112.19
2	H	1	NAG	C1-O5-C5	2.55	115.65	112.19
2	L	2	NAG	C1-O5-C5	2.50	115.58	112.19
2	G	1	NAG	C3-C4-C5	2.45	114.61	110.24
2	F	2	NAG	C1-O5-C5	2.28	115.29	112.19

Continued on next page...

Continued from previous page...

Mol	Chain	Res	Type	Atoms	Z	Observed(°)	Ideal(°)
2	I	1	NAG	C3-C4-C5	2.24	114.24	110.24
2	I	2	NAG	C1-O5-C5	2.17	115.13	112.19
2	K	2	NAG	C1-O5-C5	2.08	115.01	112.19
2	E	2	NAG	C1-O5-C5	2.03	114.94	112.19
2	J	1	NAG	C1-O5-C5	2.02	114.93	112.19

There are no chirality outliers.

All (2) torsion outliers are listed below:

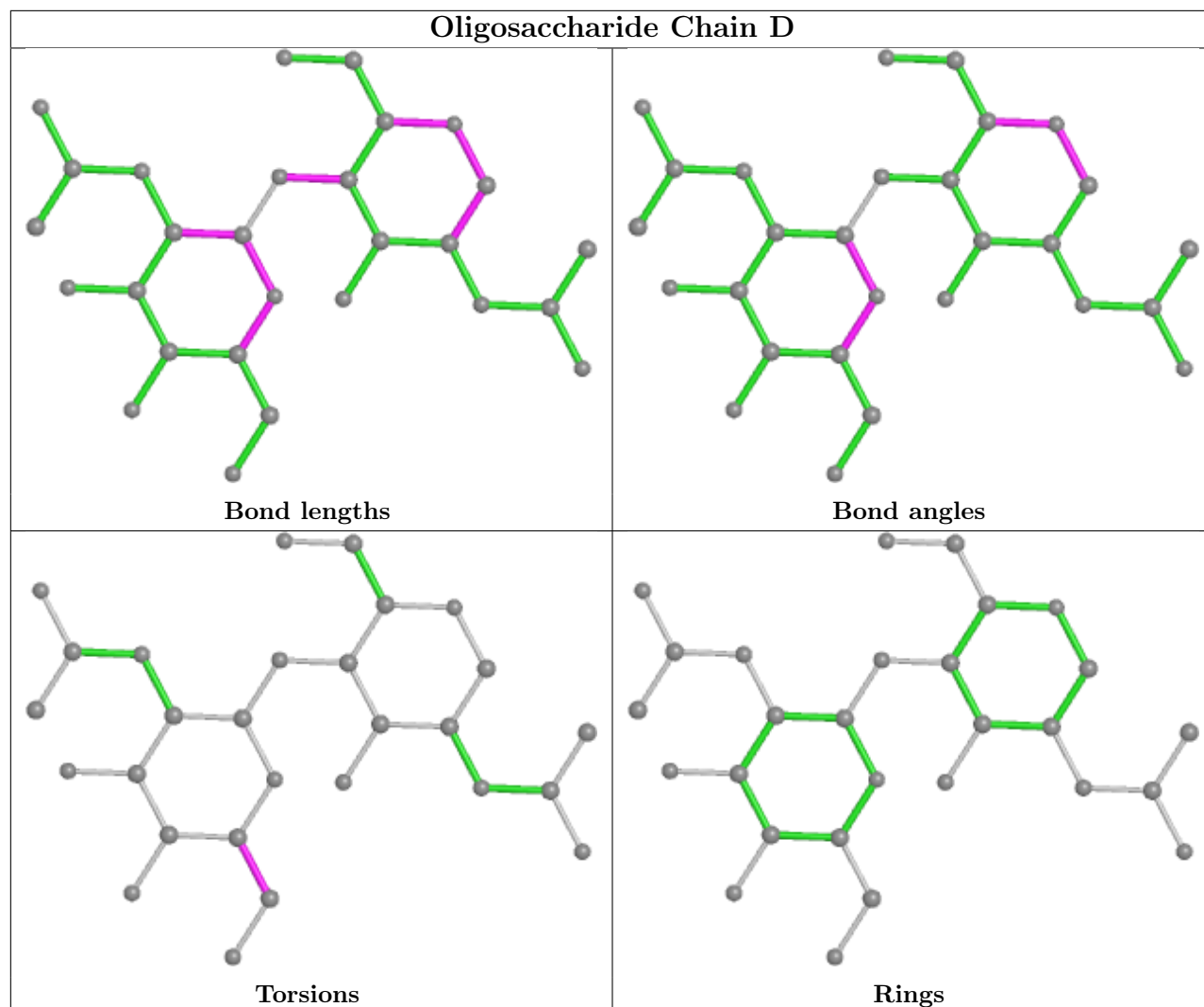
Mol	Chain	Res	Type	Atoms
2	D	2	NAG	O5-C5-C6-O6
2	D	2	NAG	C4-C5-C6-O6

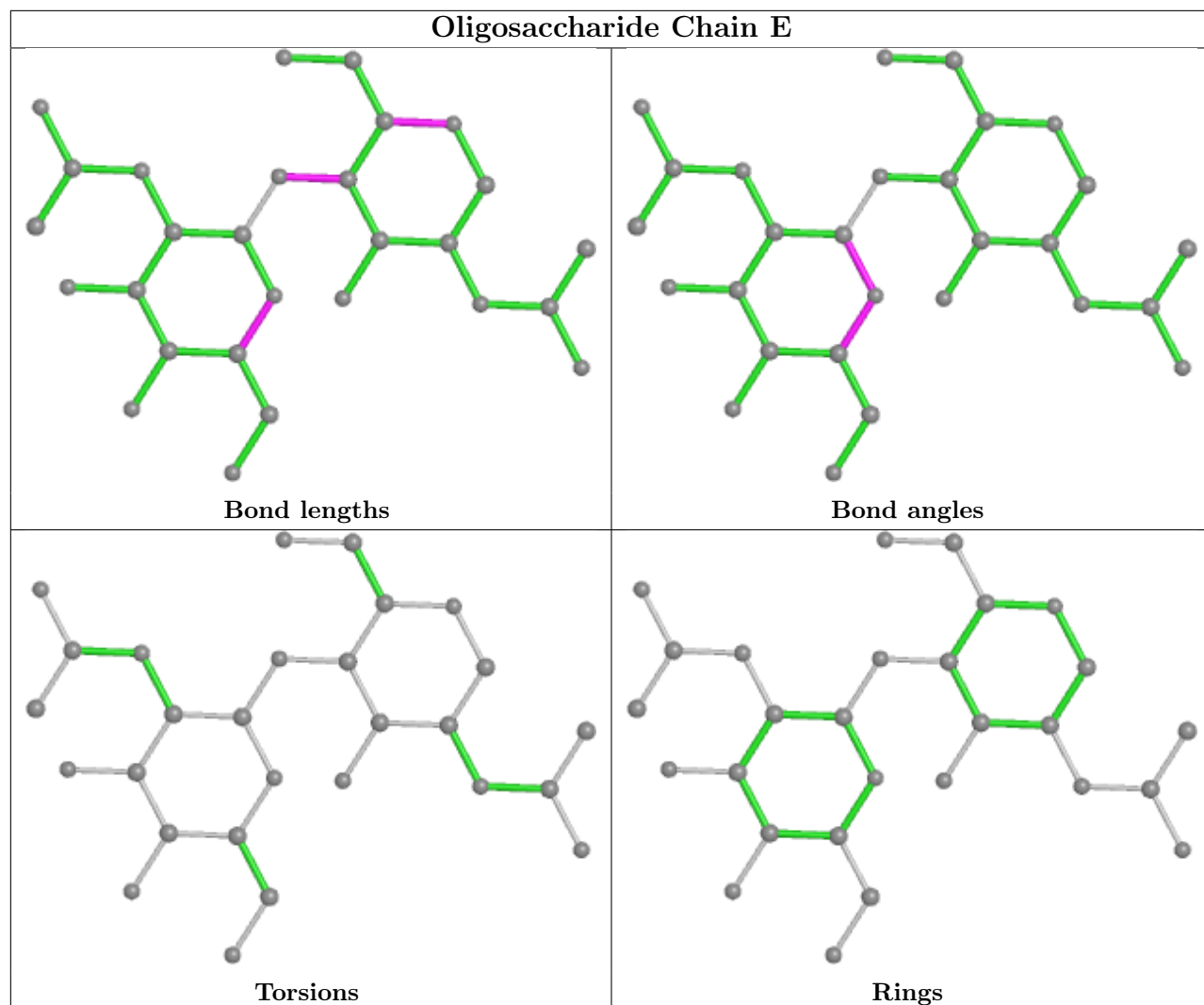
There are no ring outliers.

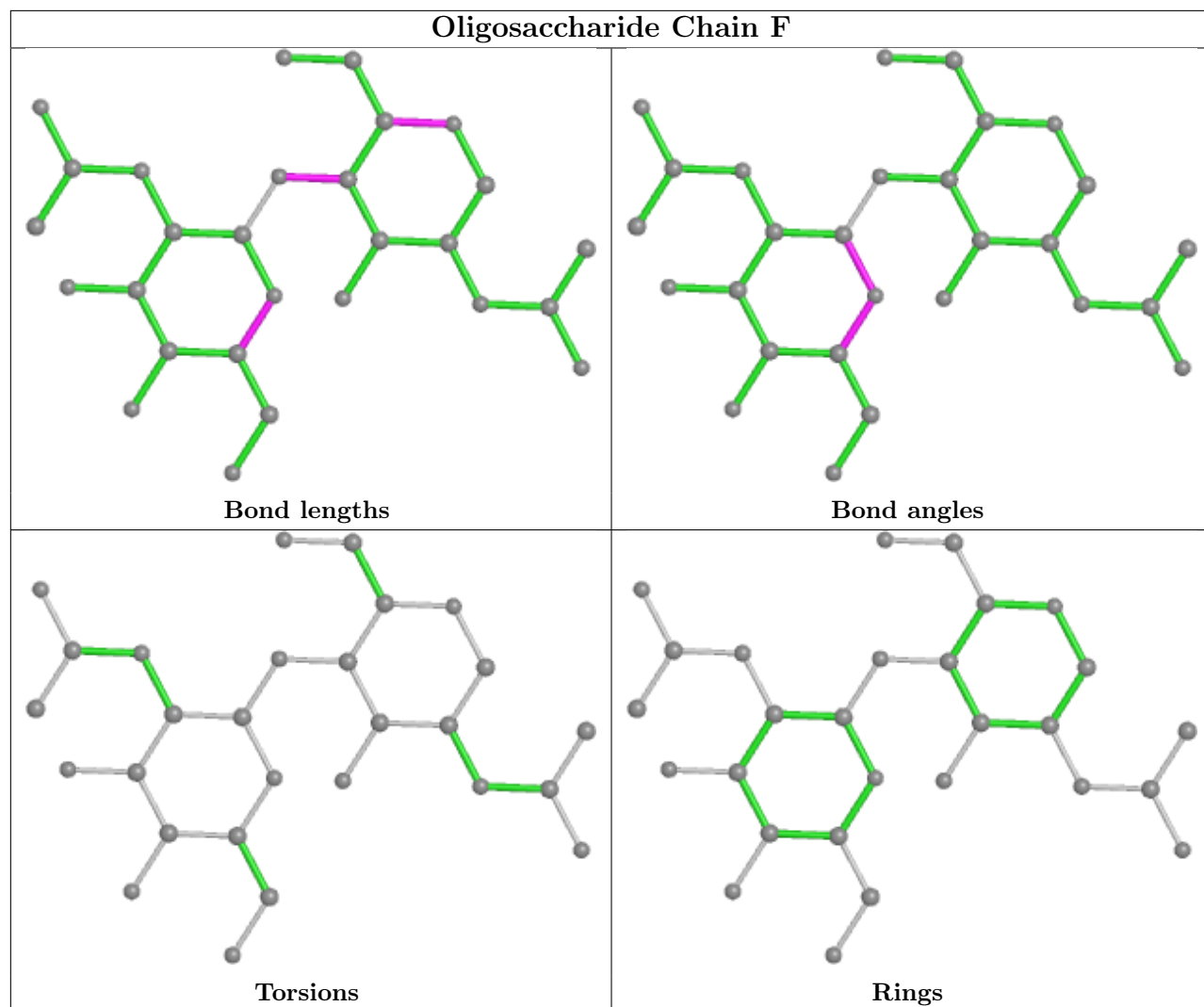
1 monomer is involved in 1 short contact:

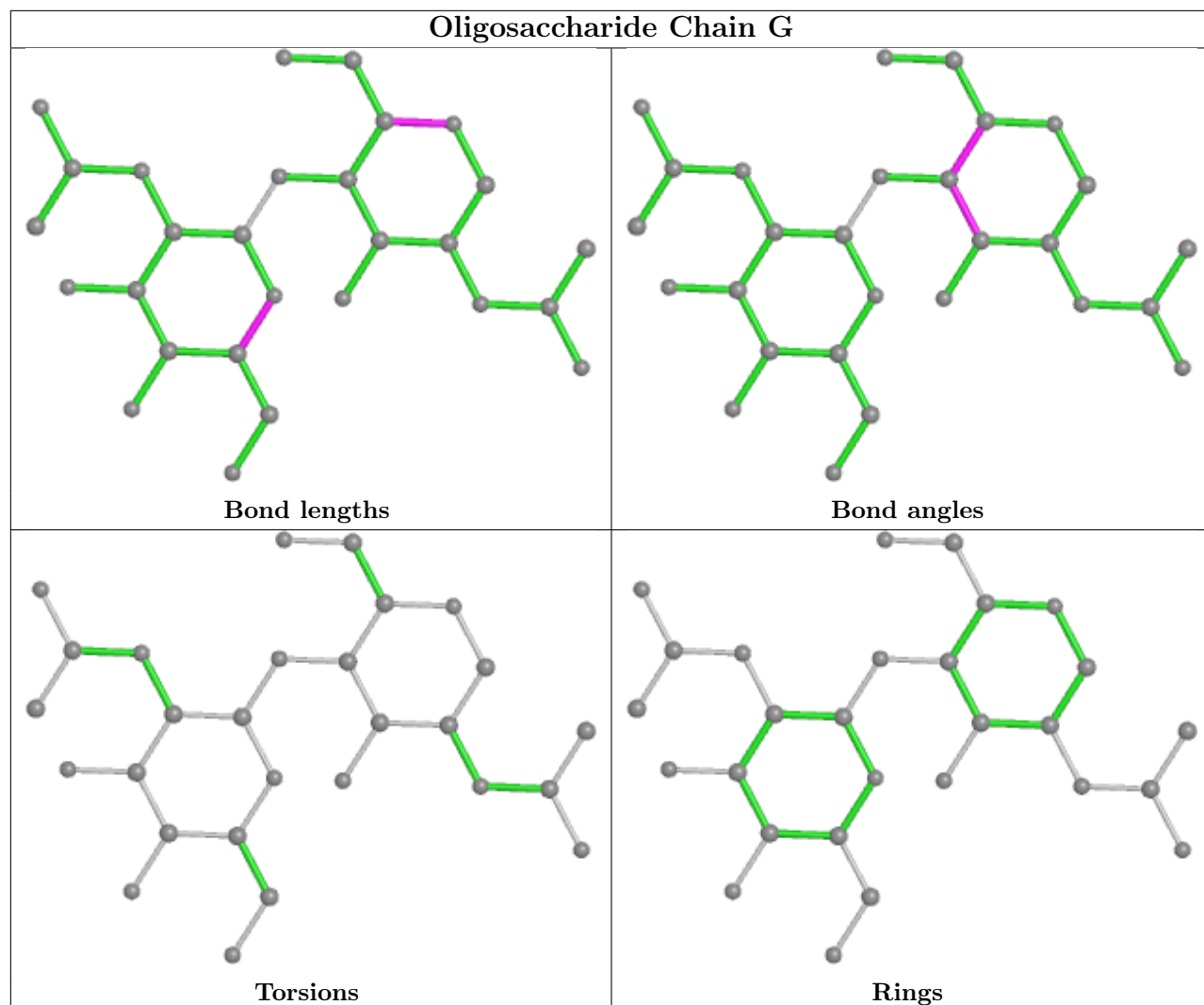
Mol	Chain	Res	Type	Clashes	Symm-Clashes
2	D	2	NAG	1	0

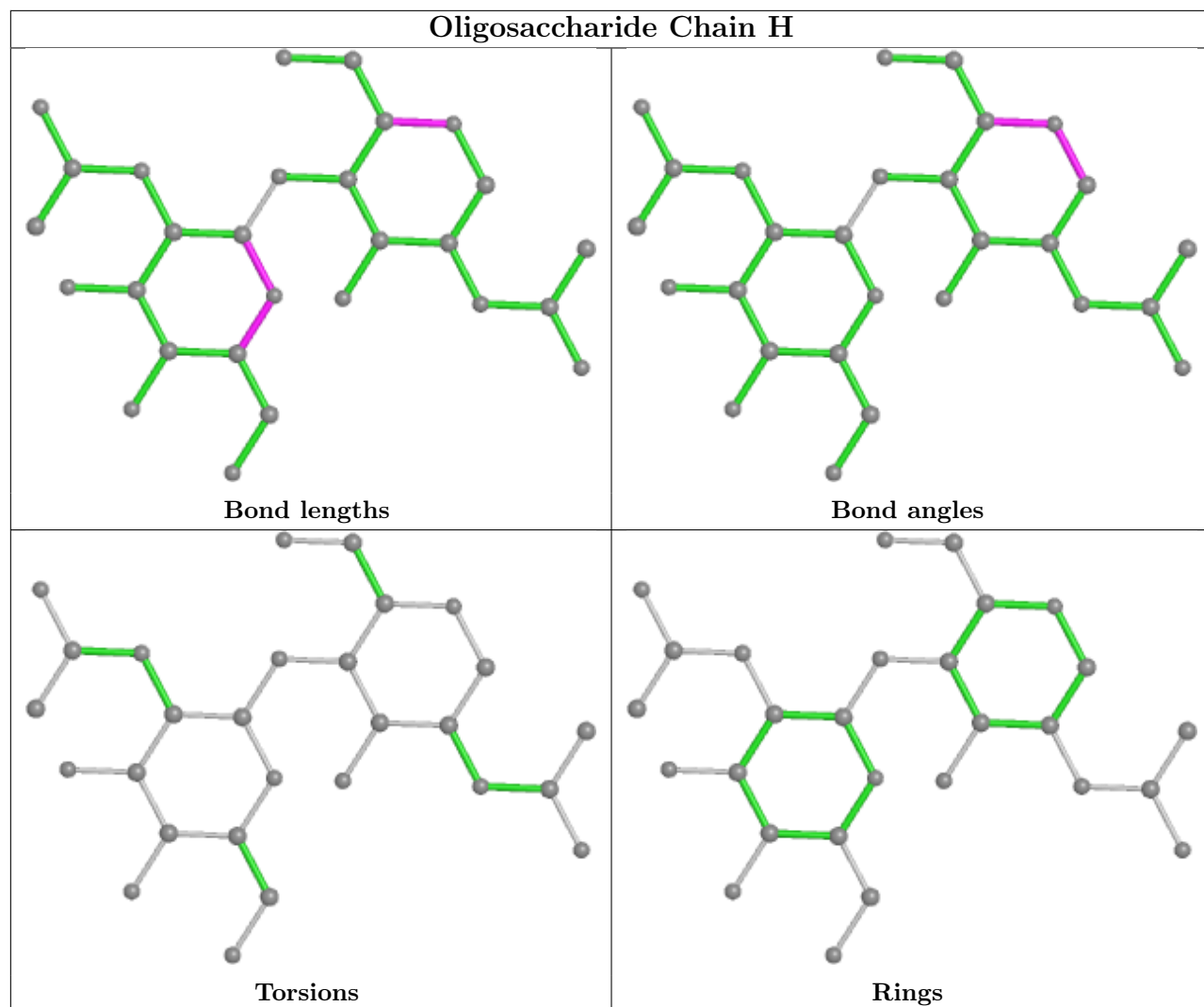
The following is a two-dimensional graphical depiction of Mogul quality analysis of bond lengths, bond angles, torsion angles, and ring geometry for oligosaccharide.

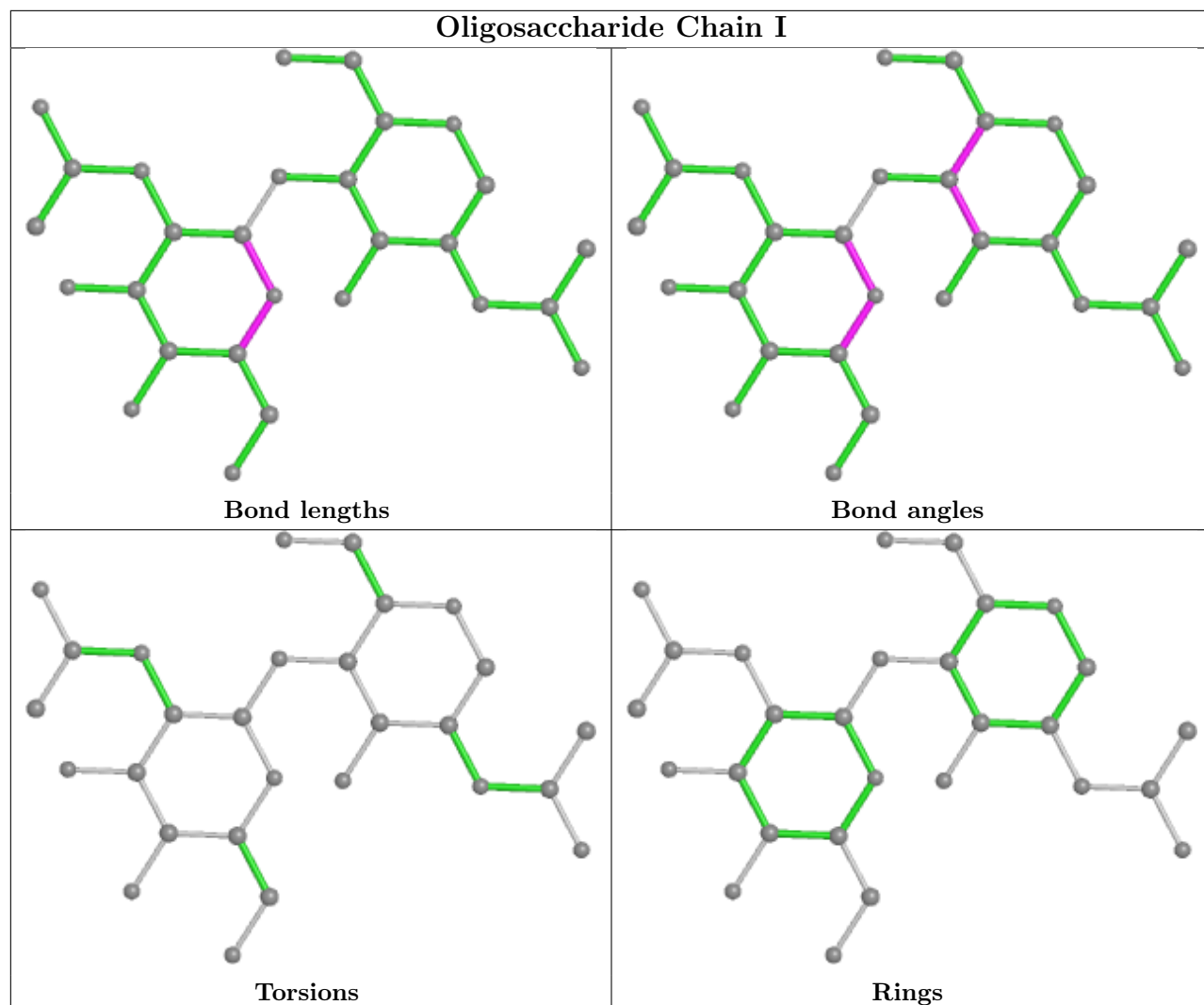


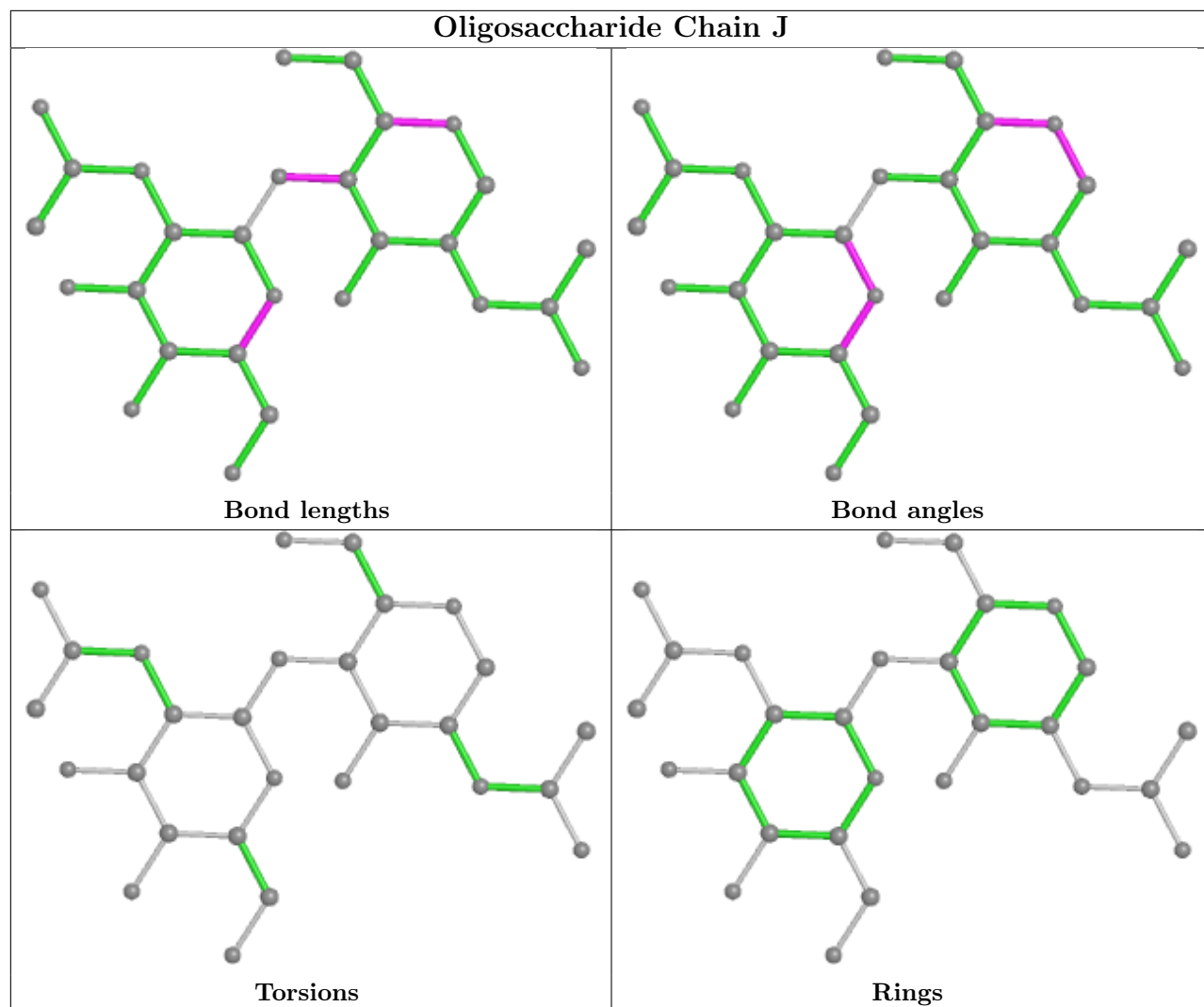


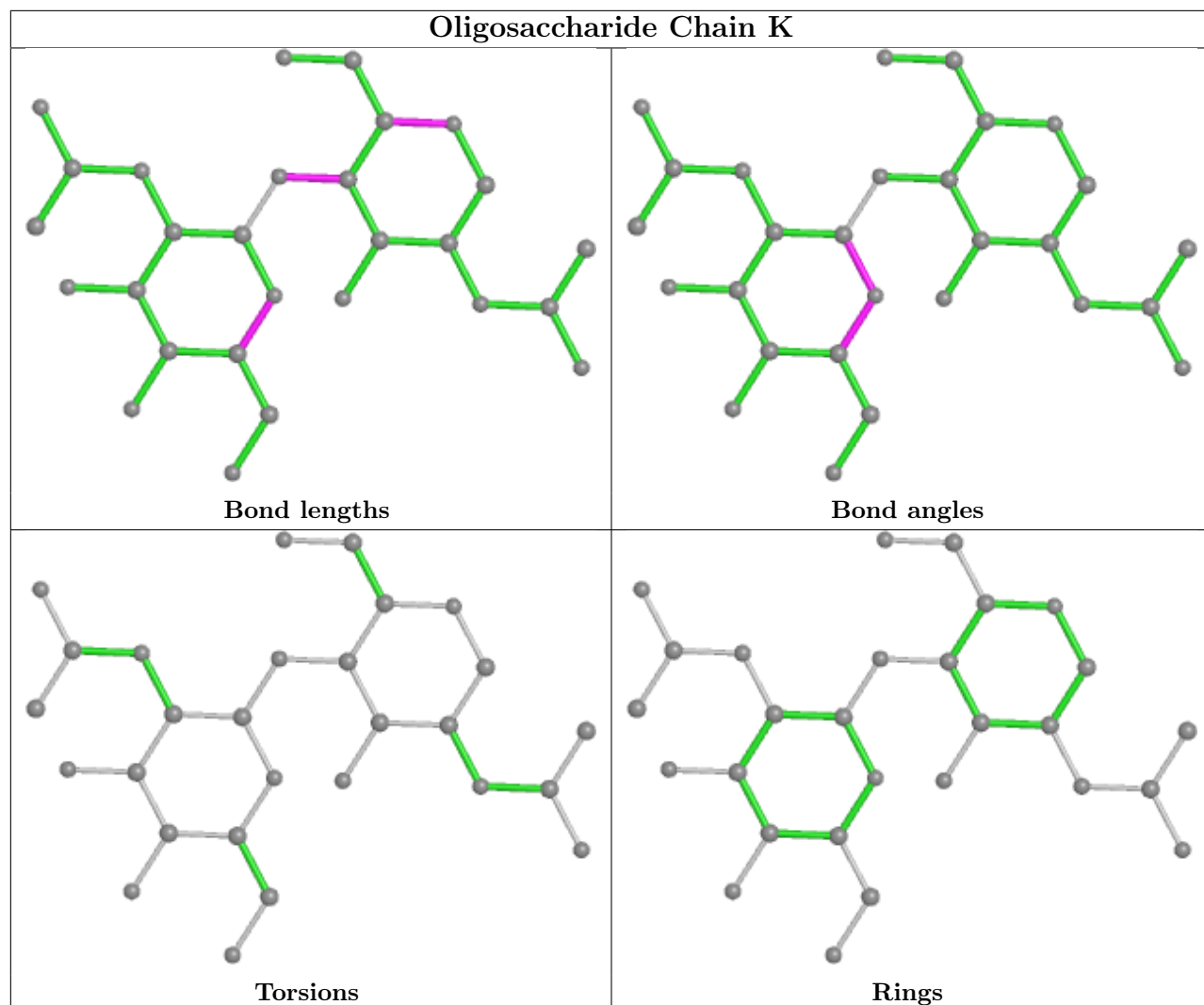


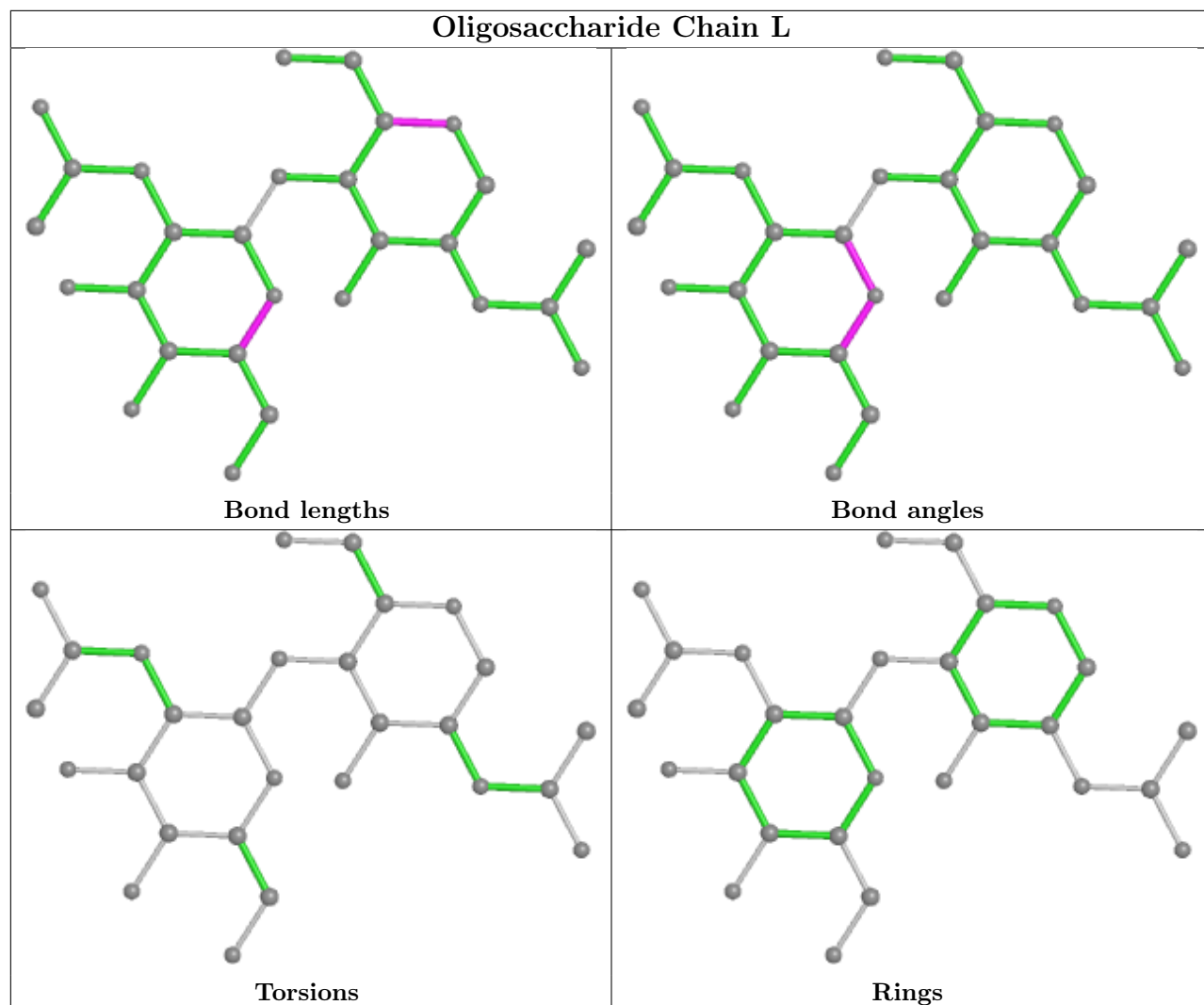


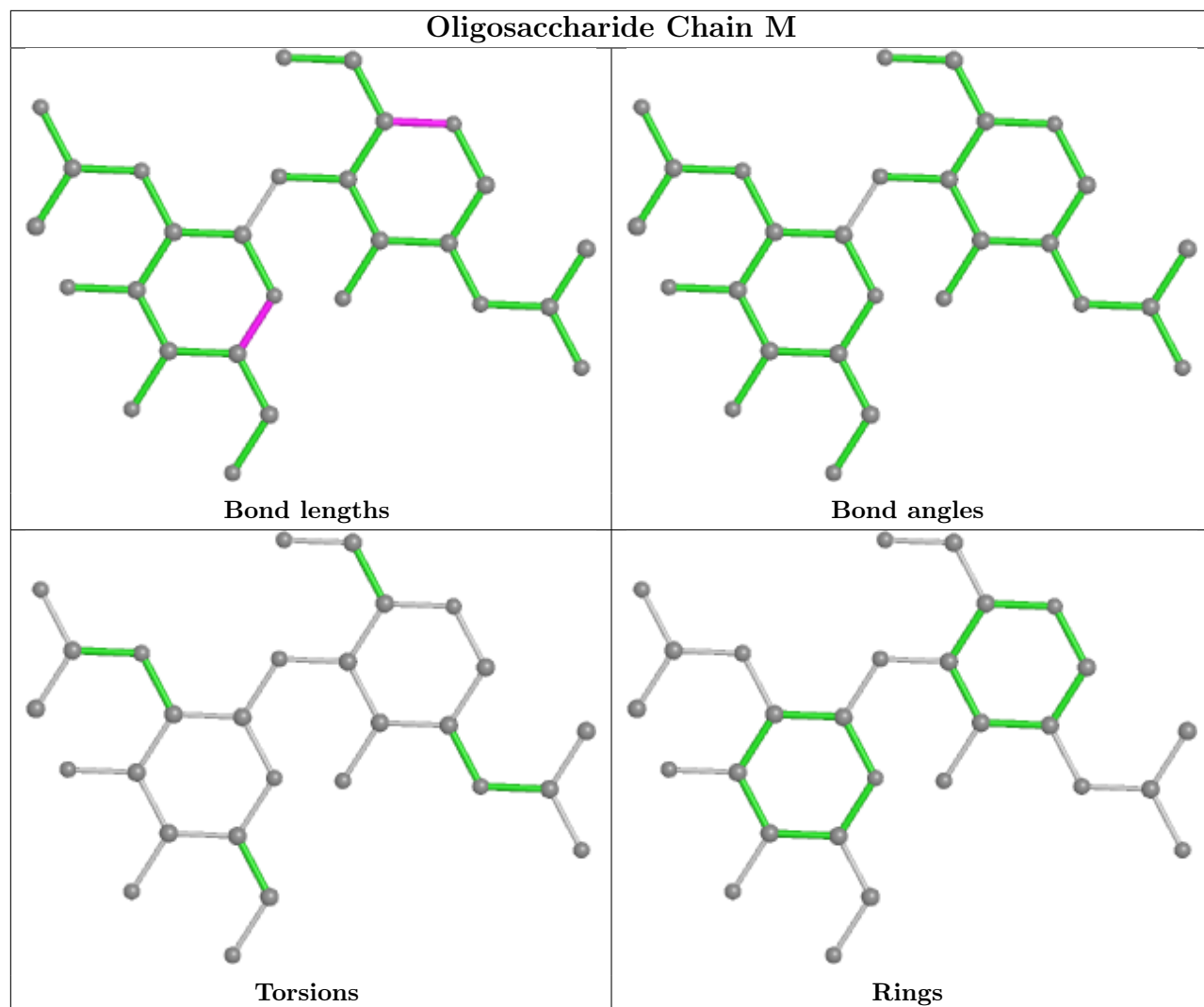


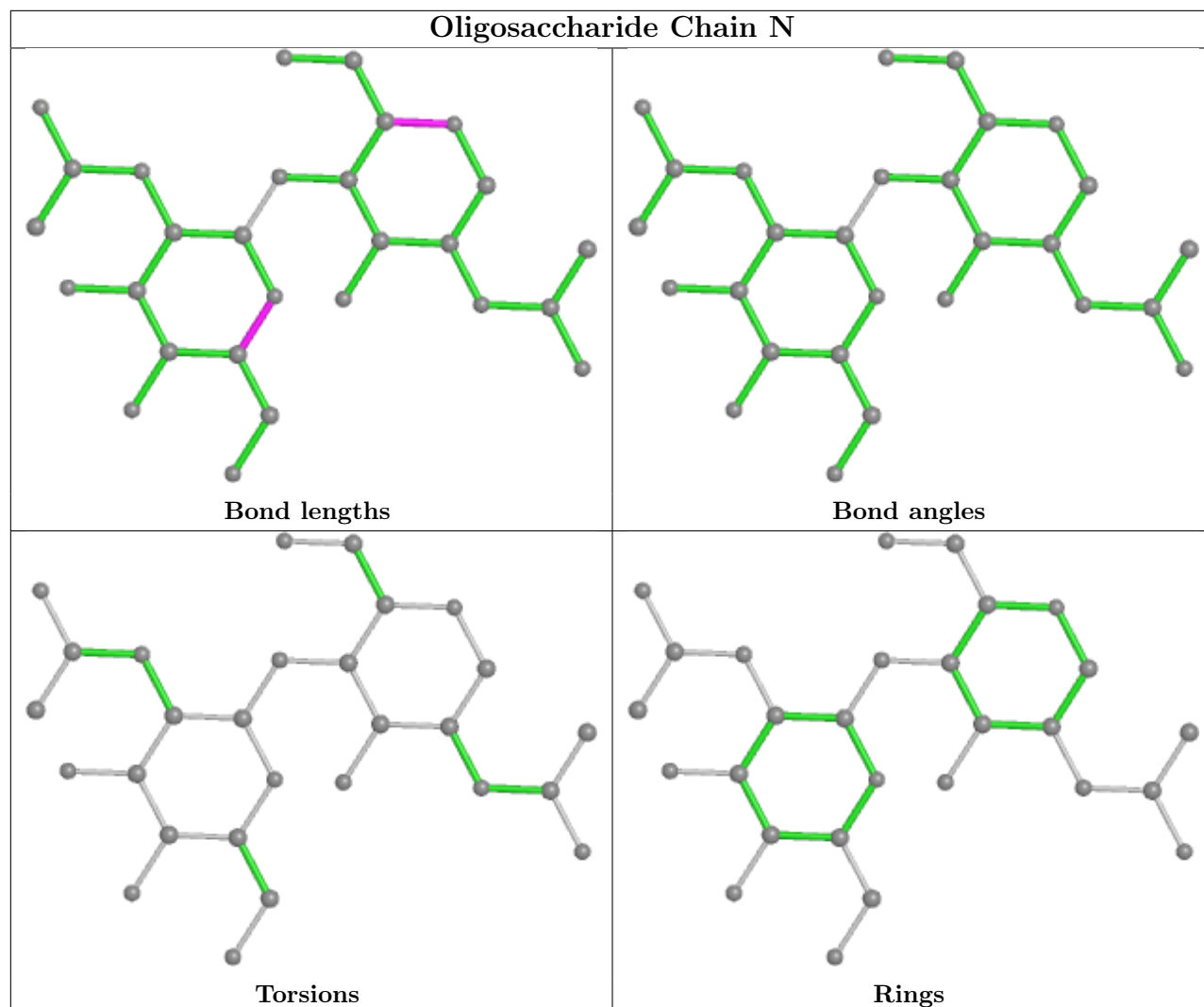


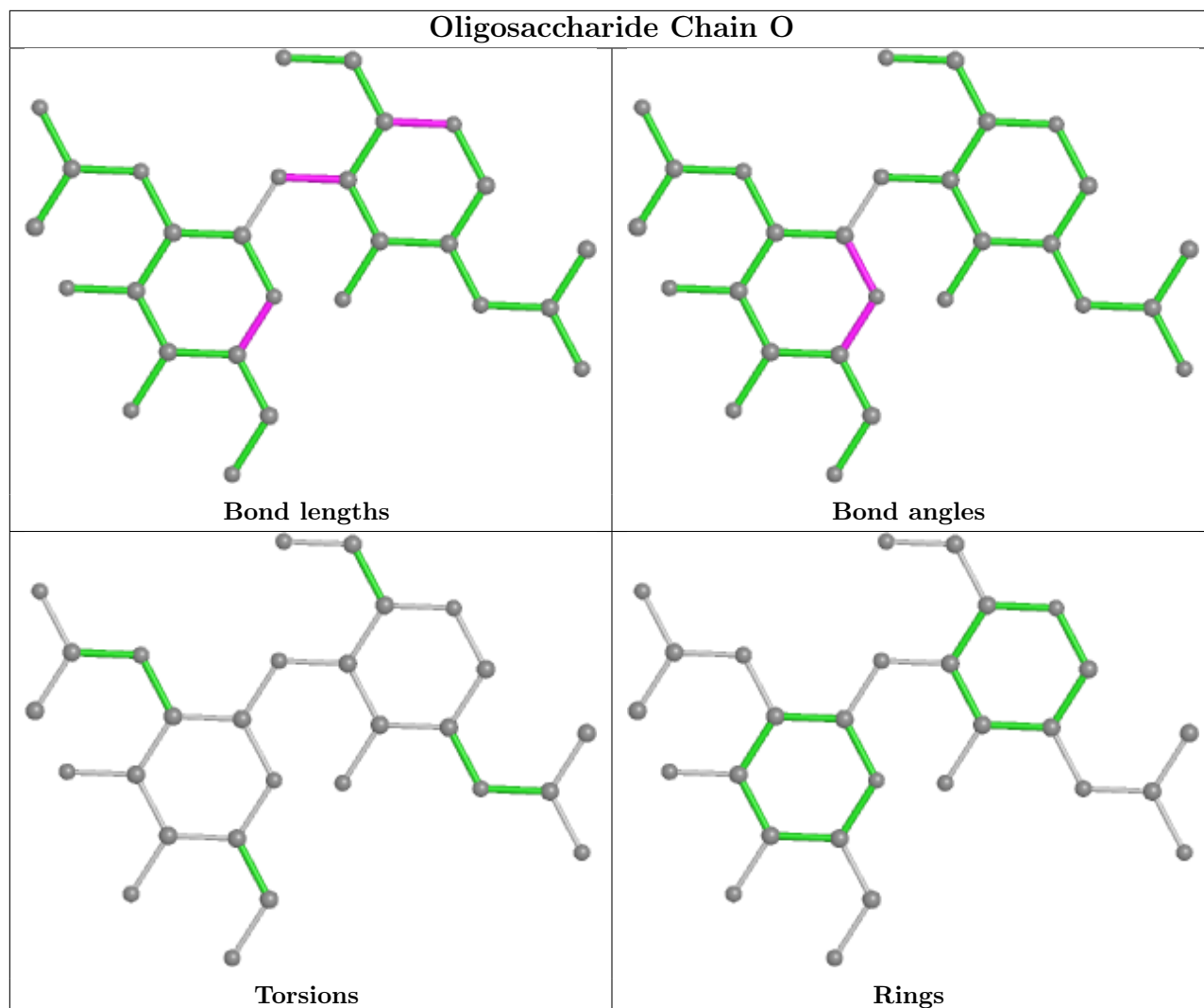












5.6 Ligand geometry [i](#)

34 ligands are modelled in this entry.

In the following table, the Counts columns list the number of bonds (or angles) for which Mogul statistics could be retrieved, the number of bonds (or angles) that are observed in the model and the number of bonds (or angles) that are defined in the Chemical Component Dictionary. The Link column lists molecule types, if any, to which the group is linked. The Z score for a bond length (or angle) is the number of standard deviations the observed value is removed from the expected value. A bond length (or angle) with $|Z| > 2$ is considered an outlier worth inspection. RMSZ is the root-mean-square of all Z scores of the bond lengths (or angles).

Mol	Type	Chain	Res	Link	Bond lengths			Bond angles		
					Counts	RMSZ	# $ Z > 2$	Counts	RMSZ	# $ Z > 2$
3	NAG	B	1312	1	14,14,15	1.14	1 (7%)	17,19,21	0.70	0
3	NAG	C	1311	1	14,14,15	1.26	2 (14%)	17,19,21	0.73	1 (5%)
3	NAG	B	1302	1	14,14,15	1.21	1 (7%)	17,19,21	0.83	0

Mol	Type	Chain	Res	Link	Bond lengths			Bond angles		
					Counts	RMSZ	# Z > 2	Counts	RMSZ	# Z > 2
3	NAG	B	1311	1	14,14,15	1.33	3 (21%)	17,19,21	0.92	1 (5%)
3	NAG	C	1302	1	14,14,15	1.30	2 (14%)	17,19,21	0.63	0
3	NAG	C	1309	1	14,14,15	1.31	3 (21%)	17,19,21	1.10	1 (5%)
3	NAG	C	1304	1	14,14,15	1.34	3 (21%)	17,19,21	0.73	0
3	NAG	C	1308	1	14,14,15	1.20	1 (7%)	17,19,21	0.88	1 (5%)
3	NAG	A	1303	1	14,14,15	1.25	1 (7%)	17,19,21	0.67	0
3	NAG	C	1307	1	14,14,15	1.25	2 (14%)	17,19,21	0.82	1 (5%)
3	NAG	C	1310	1	14,14,15	1.19	1 (7%)	17,19,21	0.92	1 (5%)
3	NAG	B	1307	1	14,14,15	1.22	1 (7%)	17,19,21	0.74	0
3	NAG	A	1310	1	14,14,15	1.18	1 (7%)	17,19,21	1.07	1 (5%)
3	NAG	A	1307	1	14,14,15	1.21	2 (14%)	17,19,21	0.85	1 (5%)
3	NAG	A	1308	1	14,14,15	1.18	1 (7%)	17,19,21	0.74	0
3	NAG	C	1306	1	14,14,15	1.23	2 (14%)	17,19,21	0.90	1 (5%)
3	NAG	B	1303	1	14,14,15	1.26	2 (14%)	17,19,21	0.81	1 (5%)
3	NAG	B	1305	1	14,14,15	1.27	2 (14%)	17,19,21	0.62	0
3	NAG	B	1309	1	14,14,15	1.27	2 (14%)	17,19,21	0.61	0
3	NAG	B	1306	1	14,14,15	1.14	1 (7%)	17,19,21	0.74	0
3	NAG	A	1309	1	14,14,15	1.18	1 (7%)	17,19,21	0.69	0
3	NAG	B	1301	1	14,14,15	1.35	3 (21%)	17,19,21	0.98	1 (5%)
3	NAG	A	1306	1	14,14,15	1.26	1 (7%)	17,19,21	0.91	1 (5%)
3	NAG	A	1301	1	14,14,15	1.23	1 (7%)	17,19,21	0.68	0
3	NAG	A	1305	1	14,14,15	1.28	3 (21%)	17,19,21	0.80	1 (5%)
3	NAG	C	1305	1	14,14,15	1.20	1 (7%)	17,19,21	0.96	1 (5%)
3	NAG	C	1301	1	14,14,15	1.37	3 (21%)	17,19,21	0.89	1 (5%)
3	NAG	B	1310	1	14,14,15	1.32	3 (21%)	17,19,21	0.81	1 (5%)
3	NAG	B	1308	1	14,14,15	1.04	1 (7%)	17,19,21	0.88	1 (5%)
3	NAG	B	1304	1	14,14,15	1.27	2 (14%)	17,19,21	0.85	1 (5%)
3	NAG	A	1304	1	14,14,15	1.23	1 (7%)	17,19,21	0.66	0
3	NAG	C	1303	1	14,14,15	1.27	2 (14%)	17,19,21	0.82	0
3	NAG	A	1302	1	14,14,15	1.24	1 (7%)	17,19,21	0.89	1 (5%)
3	NAG	C	1312	1	14,14,15	1.23	1 (7%)	17,19,21	0.70	0

In the following table, the Chirals column lists the number of chiral outliers, the number of chiral centers analysed, the number of these observed in the model and the number defined in the Chemical Component Dictionary. Similar counts are reported in the Torsion and Rings columns. '-' means no outliers of that kind were identified.

Mol	Type	Chain	Res	Link	Chirals	Torsions	Rings
3	NAG	B	1312	1	-	0/6/23/26	0/1/1/1
3	NAG	C	1311	1	-	0/6/23/26	0/1/1/1
3	NAG	B	1302	1	-	1/6/23/26	0/1/1/1
3	NAG	B	1311	1	-	0/6/23/26	0/1/1/1
3	NAG	C	1302	1	-	0/6/23/26	0/1/1/1
3	NAG	C	1309	1	-	0/6/23/26	0/1/1/1
3	NAG	C	1304	1	-	0/6/23/26	0/1/1/1
3	NAG	C	1308	1	-	2/6/23/26	0/1/1/1
3	NAG	A	1303	1	-	0/6/23/26	0/1/1/1
3	NAG	C	1307	1	-	0/6/23/26	0/1/1/1
3	NAG	C	1310	1	-	0/6/23/26	0/1/1/1
3	NAG	B	1307	1	-	0/6/23/26	0/1/1/1
3	NAG	A	1310	1	-	1/6/23/26	0/1/1/1
3	NAG	A	1307	1	-	1/6/23/26	0/1/1/1
3	NAG	A	1308	1	-	0/6/23/26	0/1/1/1
3	NAG	C	1306	1	-	0/6/23/26	0/1/1/1
3	NAG	B	1303	1	-	0/6/23/26	0/1/1/1
3	NAG	B	1305	1	-	0/6/23/26	0/1/1/1
3	NAG	B	1309	1	-	0/6/23/26	0/1/1/1
3	NAG	B	1306	1	-	0/6/23/26	0/1/1/1
3	NAG	A	1309	1	-	0/6/23/26	0/1/1/1
3	NAG	B	1301	1	-	0/6/23/26	0/1/1/1
3	NAG	A	1306	1	-	0/6/23/26	0/1/1/1
3	NAG	A	1301	1	-	0/6/23/26	0/1/1/1
3	NAG	A	1305	1	-	0/6/23/26	0/1/1/1
3	NAG	C	1305	1	-	0/6/23/26	0/1/1/1
3	NAG	C	1301	1	-	0/6/23/26	0/1/1/1
3	NAG	B	1310	1	-	0/6/23/26	0/1/1/1
3	NAG	B	1308	1	-	0/6/23/26	0/1/1/1
3	NAG	B	1304	1	-	0/6/23/26	0/1/1/1
3	NAG	A	1304	1	-	0/6/23/26	0/1/1/1
3	NAG	C	1303	1	-	0/6/23/26	0/1/1/1
3	NAG	A	1302	1	-	0/6/23/26	0/1/1/1
3	NAG	C	1312	1	-	0/6/23/26	0/1/1/1

All (58) bond length outliers are listed below:

Mol	Chain	Res	Type	Atoms	Z	Observed(Å)	Ideal(Å)
3	C	1303	NAG	O5-C5	2.93	1.49	1.43
3	B	1311	NAG	O5-C5	2.89	1.49	1.43
3	B	1310	NAG	O5-C5	2.85	1.49	1.43
3	B	1304	NAG	O5-C5	2.81	1.49	1.43
3	C	1304	NAG	O5-C5	2.81	1.49	1.43

Continued on next page...

Continued from previous page...

Mol	Chain	Res	Type	Atoms	Z	Observed(Å)	Ideal(Å)
3	B	1303	NAG	O5-C5	2.80	1.49	1.43
3	A	1306	NAG	O5-C5	2.76	1.49	1.43
3	C	1307	NAG	O5-C5	2.76	1.49	1.43
3	A	1301	NAG	O5-C5	2.75	1.49	1.43
3	C	1310	NAG	O5-C5	2.74	1.49	1.43
3	A	1302	NAG	O5-C5	2.73	1.49	1.43
3	B	1301	NAG	O5-C5	2.73	1.49	1.43
3	C	1311	NAG	O5-C5	2.73	1.49	1.43
3	A	1304	NAG	O5-C5	2.72	1.49	1.43
3	C	1305	NAG	O5-C5	2.71	1.48	1.43
3	A	1303	NAG	O5-C5	2.70	1.48	1.43
3	C	1308	NAG	O5-C5	2.68	1.48	1.43
3	C	1312	NAG	O5-C5	2.68	1.48	1.43
3	C	1306	NAG	O5-C5	2.65	1.48	1.43
3	B	1302	NAG	O5-C5	2.64	1.48	1.43
3	B	1309	NAG	O5-C5	2.62	1.48	1.43
3	A	1309	NAG	O5-C5	2.60	1.48	1.43
3	B	1307	NAG	O5-C5	2.59	1.48	1.43
3	A	1305	NAG	O5-C5	2.58	1.48	1.43
3	C	1302	NAG	O5-C5	2.57	1.48	1.43
3	C	1309	NAG	O5-C5	2.54	1.48	1.43
3	B	1305	NAG	O5-C5	2.53	1.48	1.43
3	C	1301	NAG	O5-C5	2.53	1.48	1.43
3	B	1312	NAG	O5-C5	2.52	1.48	1.43
3	A	1310	NAG	O5-C5	2.49	1.48	1.43
3	B	1301	NAG	C1-C2	2.47	1.56	1.52
3	A	1308	NAG	O5-C5	2.44	1.48	1.43
3	B	1306	NAG	O5-C5	2.42	1.48	1.43
3	C	1301	NAG	C1-C2	2.42	1.55	1.52
3	B	1301	NAG	O5-C1	2.41	1.47	1.43
3	C	1309	NAG	C1-C2	2.41	1.55	1.52
3	C	1302	NAG	C1-C2	2.41	1.55	1.52
3	C	1304	NAG	O5-C1	2.34	1.47	1.43
3	B	1311	NAG	O5-C1	2.34	1.47	1.43
3	C	1309	NAG	O5-C1	2.28	1.47	1.43
3	C	1301	NAG	O5-C1	2.27	1.47	1.43
3	A	1307	NAG	O5-C5	2.23	1.48	1.43
3	B	1310	NAG	O5-C1	2.23	1.47	1.43
3	A	1305	NAG	O5-C1	2.17	1.47	1.43
3	B	1304	NAG	O5-C1	2.16	1.47	1.43
3	B	1305	NAG	C1-C2	2.14	1.55	1.52
3	B	1310	NAG	C1-C2	2.13	1.55	1.52

Continued on next page...

Continued from previous page...

Mol	Chain	Res	Type	Atoms	Z	Observed(Å)	Ideal(Å)
3	B	1303	NAG	O5-C1	2.12	1.47	1.43
3	B	1311	NAG	C1-C2	2.12	1.55	1.52
3	C	1304	NAG	C1-C2	2.09	1.55	1.52
3	A	1305	NAG	C1-C2	2.08	1.55	1.52
3	B	1308	NAG	O5-C5	2.07	1.47	1.43
3	B	1309	NAG	O5-C1	2.06	1.47	1.43
3	C	1303	NAG	O5-C1	2.06	1.47	1.43
3	C	1307	NAG	O5-C1	2.04	1.47	1.43
3	A	1307	NAG	C1-C2	2.03	1.55	1.52
3	C	1311	NAG	O5-C1	2.02	1.46	1.43
3	C	1306	NAG	O5-C1	2.01	1.46	1.43

All (19) bond angle outliers are listed below:

Mol	Chain	Res	Type	Atoms	Z	Observed(°)	Ideal(°)
3	C	1309	NAG	C1-O5-C5	3.88	117.45	112.19
3	A	1310	NAG	C1-O5-C5	3.67	117.17	112.19
3	B	1301	NAG	C1-O5-C5	3.04	116.31	112.19
3	A	1302	NAG	C1-O5-C5	2.99	116.24	112.19
3	C	1305	NAG	C1-O5-C5	2.90	116.11	112.19
3	B	1311	NAG	C1-O5-C5	2.89	116.10	112.19
3	C	1308	NAG	C1-O5-C5	2.83	116.03	112.19
3	C	1306	NAG	C1-O5-C5	2.83	116.03	112.19
3	B	1308	NAG	C1-O5-C5	2.81	116.00	112.19
3	C	1310	NAG	C1-O5-C5	2.64	115.77	112.19
3	B	1304	NAG	C1-O5-C5	2.55	115.65	112.19
3	C	1301	NAG	C1-O5-C5	2.46	115.52	112.19
3	B	1310	NAG	C1-O5-C5	2.42	115.47	112.19
3	C	1307	NAG	C1-O5-C5	2.19	115.16	112.19
3	A	1306	NAG	C1-O5-C5	2.18	115.14	112.19
3	C	1311	NAG	C1-O5-C5	2.14	115.10	112.19
3	A	1305	NAG	C1-O5-C5	2.13	115.08	112.19
3	B	1303	NAG	C1-O5-C5	2.11	115.05	112.19
3	A	1307	NAG	C1-O5-C5	2.01	114.92	112.19

There are no chirality outliers.

All (5) torsion outliers are listed below:

Mol	Chain	Res	Type	Atoms
3	A	1307	NAG	O5-C5-C6-O6
3	A	1310	NAG	O5-C5-C6-O6
3	C	1308	NAG	C4-C5-C6-O6

Continued on next page...

Continued from previous page...

Mol	Chain	Res	Type	Atoms
3	C	1308	NAG	O5-C5-C6-O6
3	B	1302	NAG	O5-C5-C6-O6

There are no ring outliers.

No monomer is involved in short contacts.

5.7 Other polymers [i](#)

There are no such residues in this entry.

5.8 Polymer linkage issues [i](#)

There are no chain breaks in this entry.

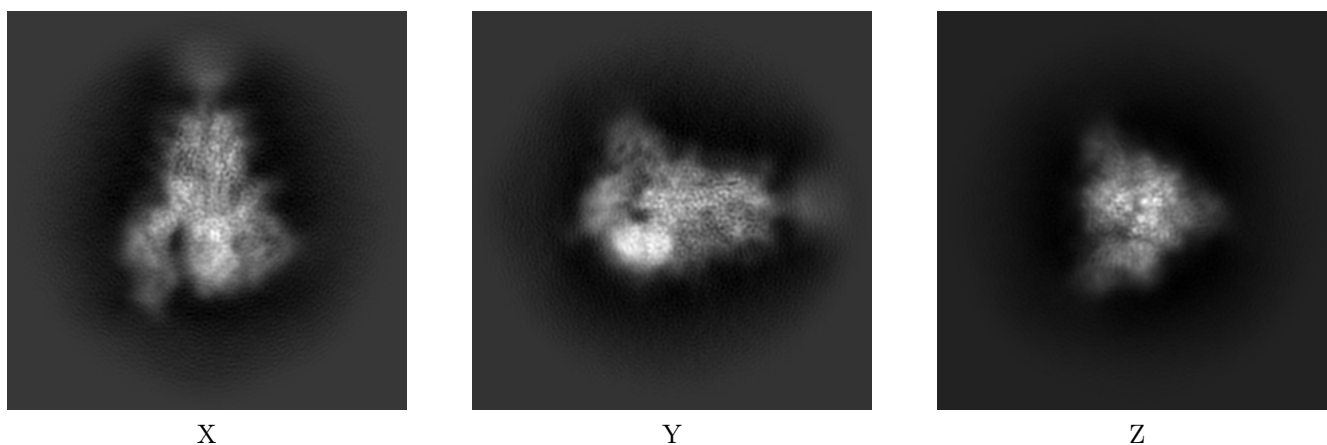
6 Map visualisation [i](#)

This section contains visualisations of the EMDB entry EMD-26047. These allow visual inspection of the internal detail of the map and identification of artifacts.

No raw map or half-maps were deposited for this entry and therefore no images, graphs, etc. pertaining to the raw map can be shown.

6.1 Orthogonal projections [i](#)

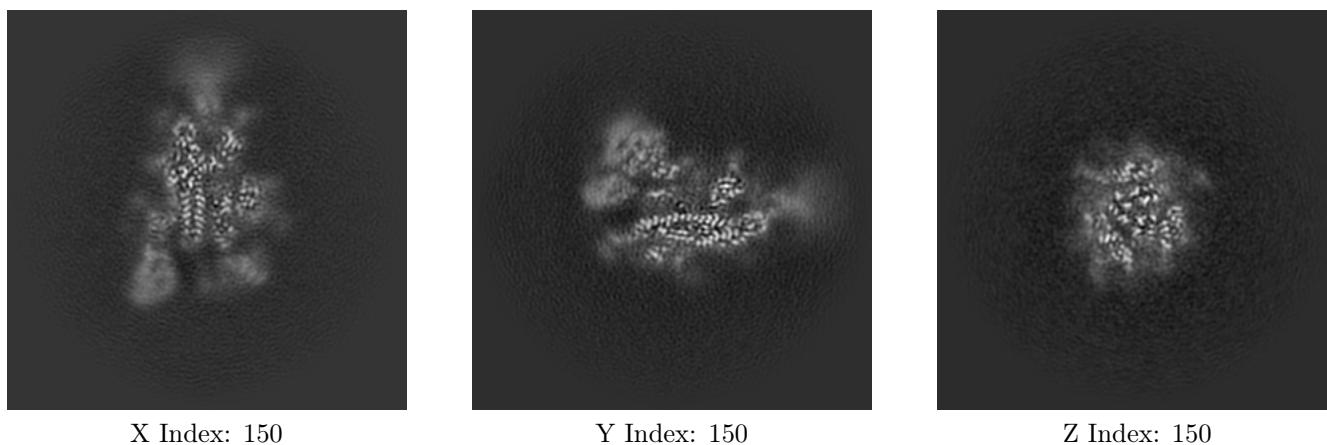
6.1.1 Primary map



The images above show the map projected in three orthogonal directions.

6.2 Central slices [i](#)

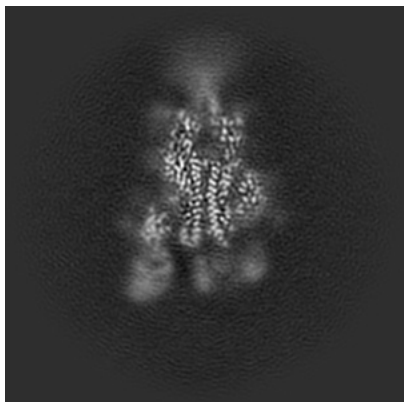
6.2.1 Primary map



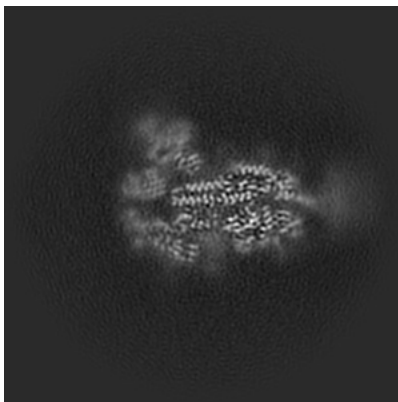
The images above show central slices of the map in three orthogonal directions.

6.3 Largest variance slices [i](#)

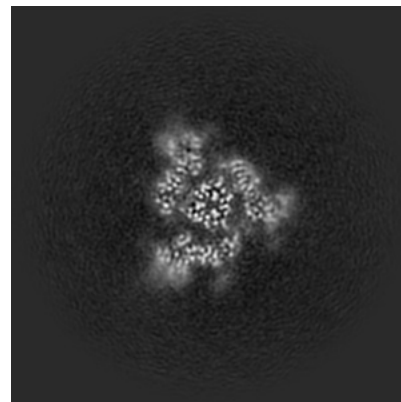
6.3.1 Primary map



X Index: 154



Y Index: 157

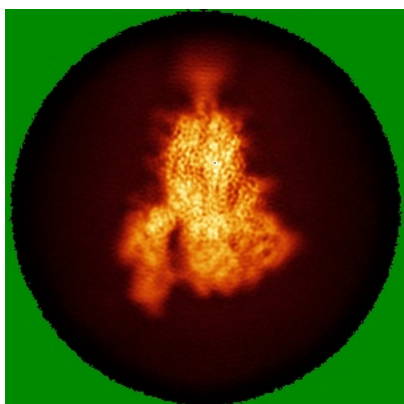


Z Index: 137

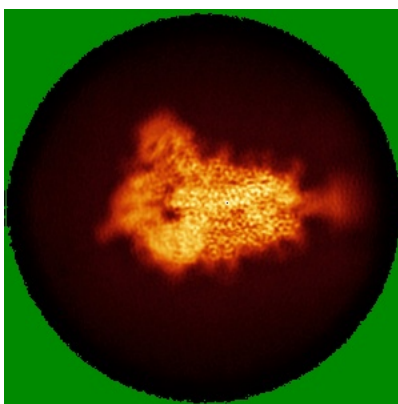
The images above show the largest variance slices of the map in three orthogonal directions.

6.4 Orthogonal standard-deviation projections (False-color) [i](#)

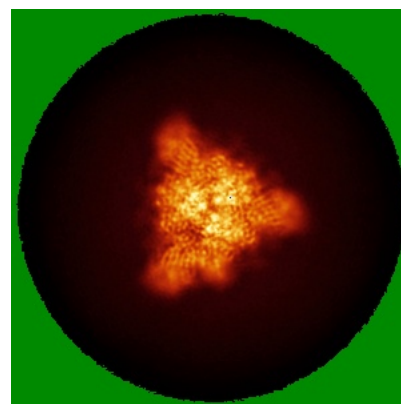
6.4.1 Primary map



X



Y

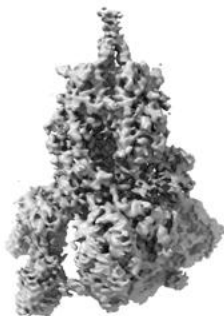


Z

The images above show the map standard deviation projections with false color in three orthogonal directions. Minimum values are shown in green, max in blue, and dark to light orange shades represent small to large values respectively.

6.5 Orthogonal surface views [i](#)

6.5.1 Primary map



X



Y



Z

The images above show the 3D surface view of the map at the recommended contour level 0.8. These images, in conjunction with the slice images, may facilitate assessment of whether an appropriate contour level has been provided.

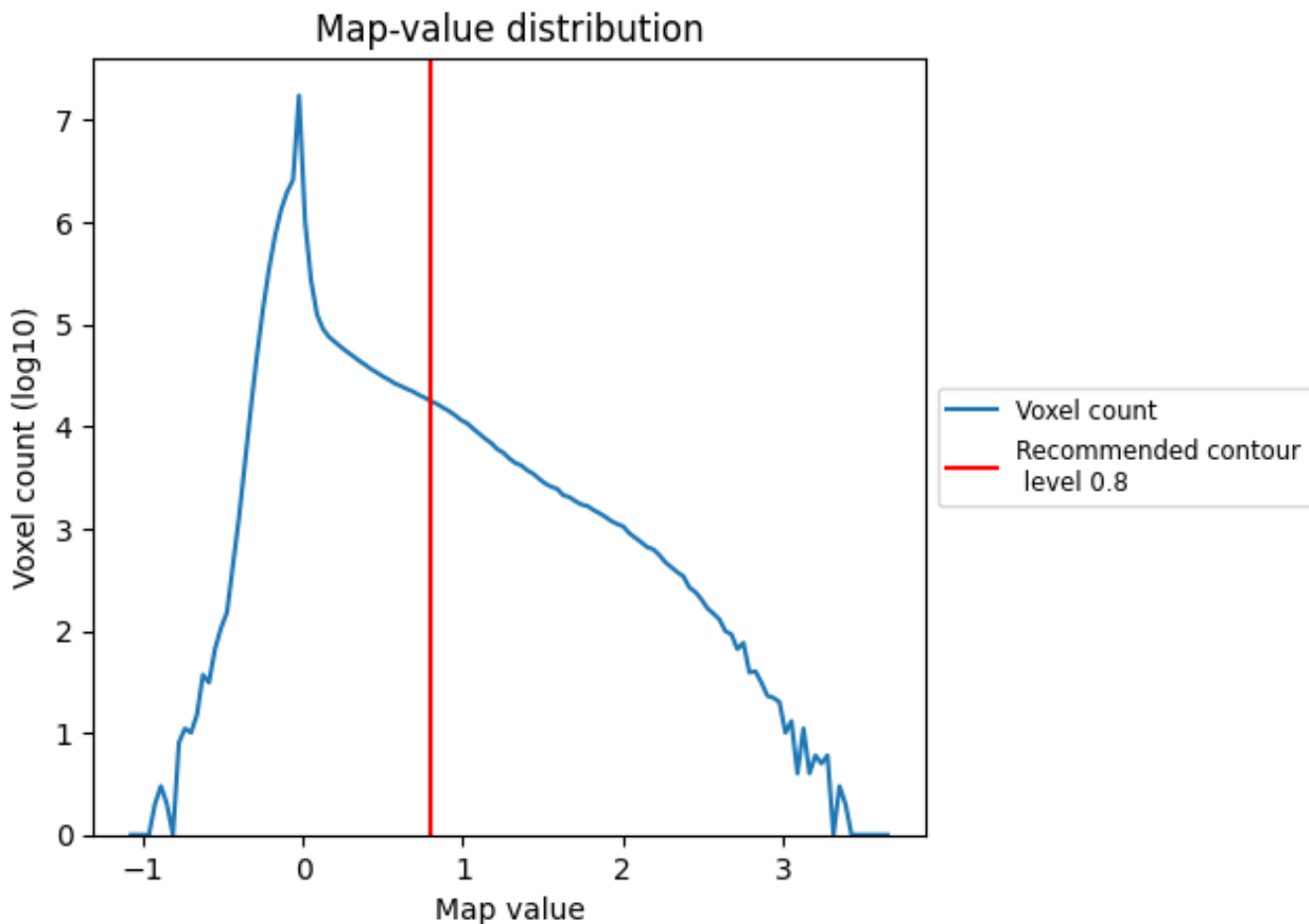
6.6 Mask visualisation [i](#)

This section was not generated. No masks/segmentation were deposited.

7 Map analysis [i](#)

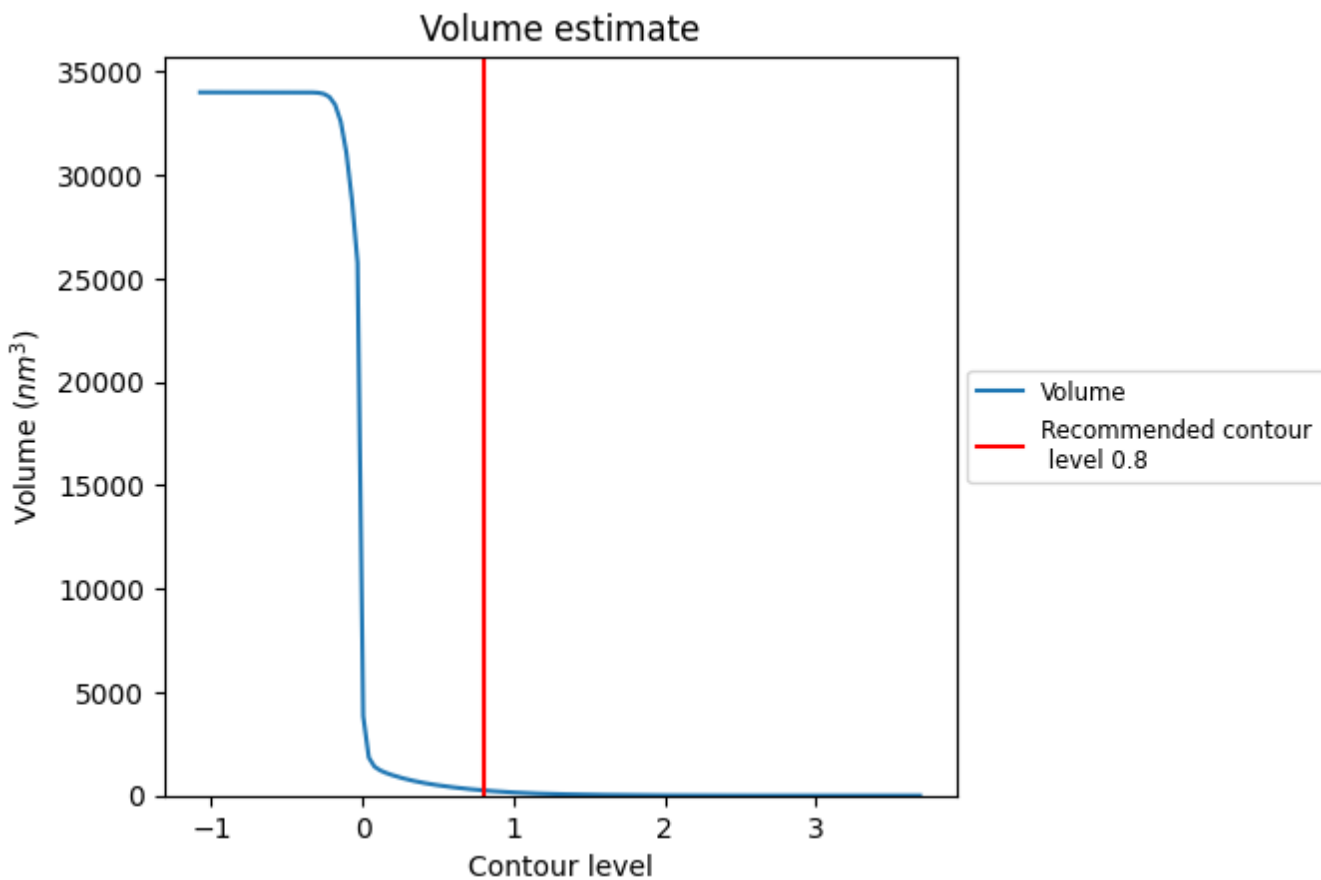
This section contains the results of statistical analysis of the map.

7.1 Map-value distribution [i](#)



The map-value distribution is plotted in 128 intervals along the x-axis. The y-axis is logarithmic. A spike in this graph at zero usually indicates that the volume has been masked.

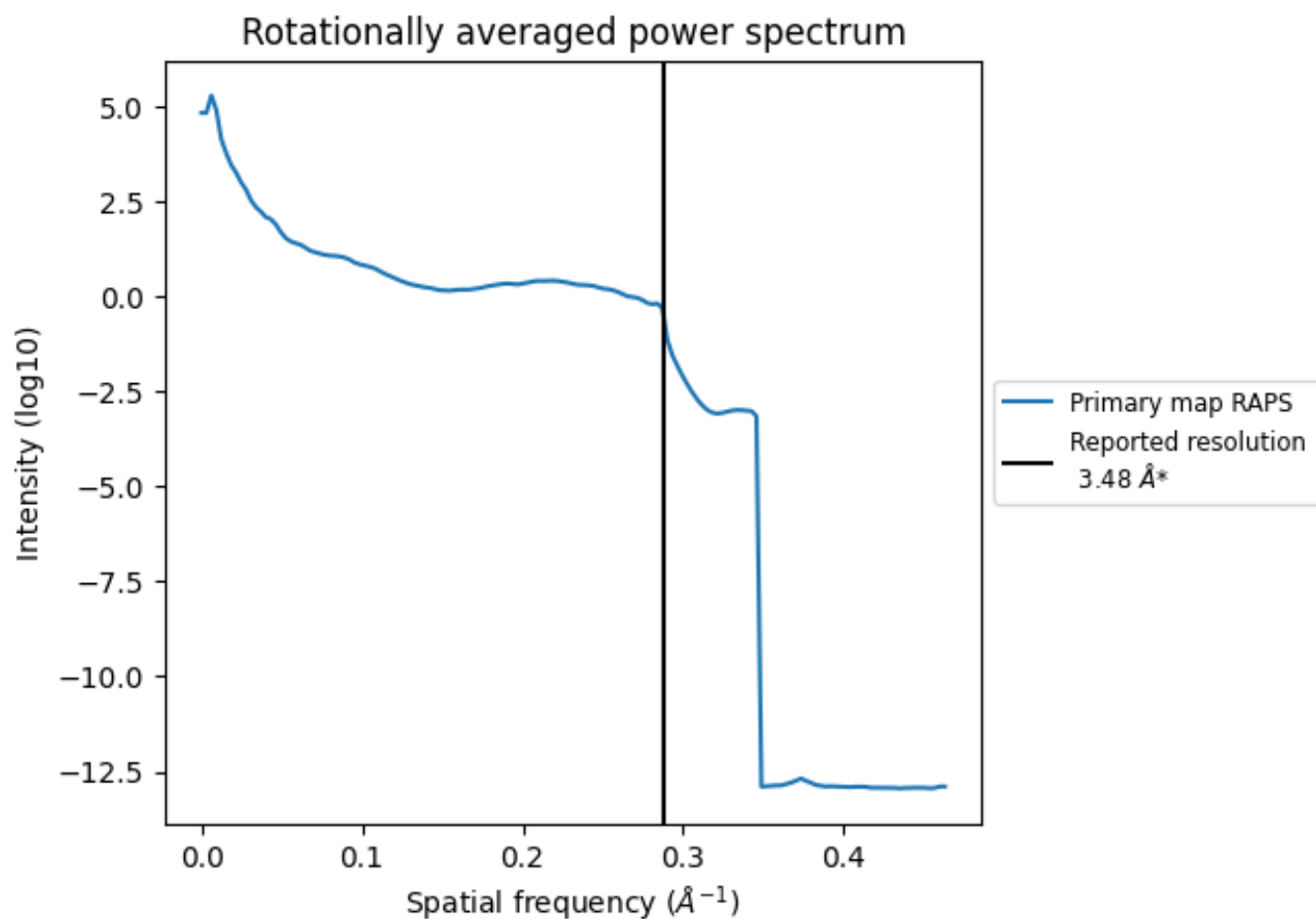
7.2 Volume estimate [i](#)



The volume at the recommended contour level is 252 nm³; this corresponds to an approximate mass of 227 kDa.

The volume estimate graph shows how the enclosed volume varies with the contour level. The recommended contour level is shown as a vertical line and the intersection between the line and the curve gives the volume of the enclosed surface at the given level.

7.3 Rotationally averaged power spectrum [i](#)



*Reported resolution corresponds to spatial frequency of 0.287\AA^{-1}

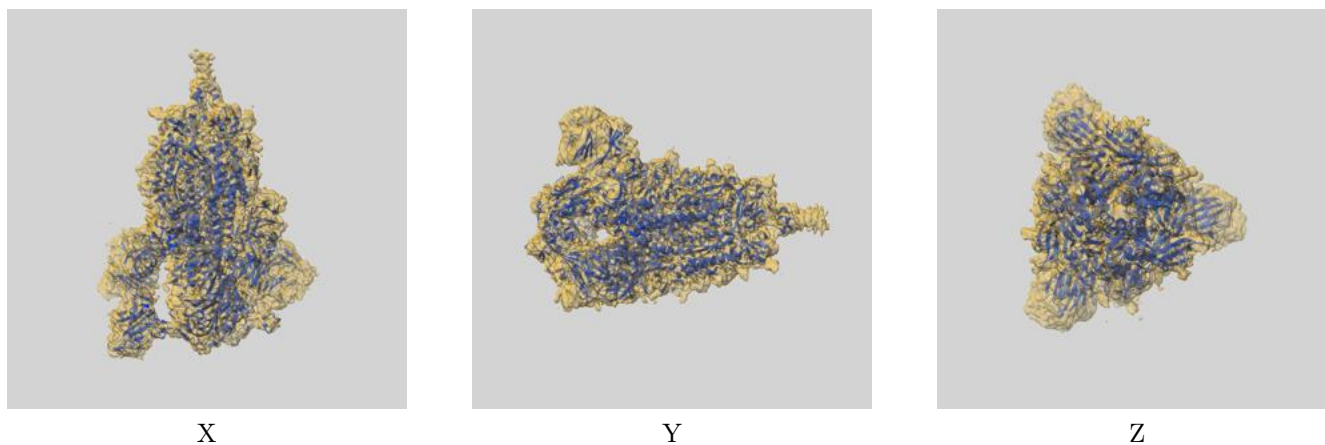
8 Fourier-Shell correlation

This section was not generated. No FSC curve or half-maps provided.

9 Map-model fit [i](#)

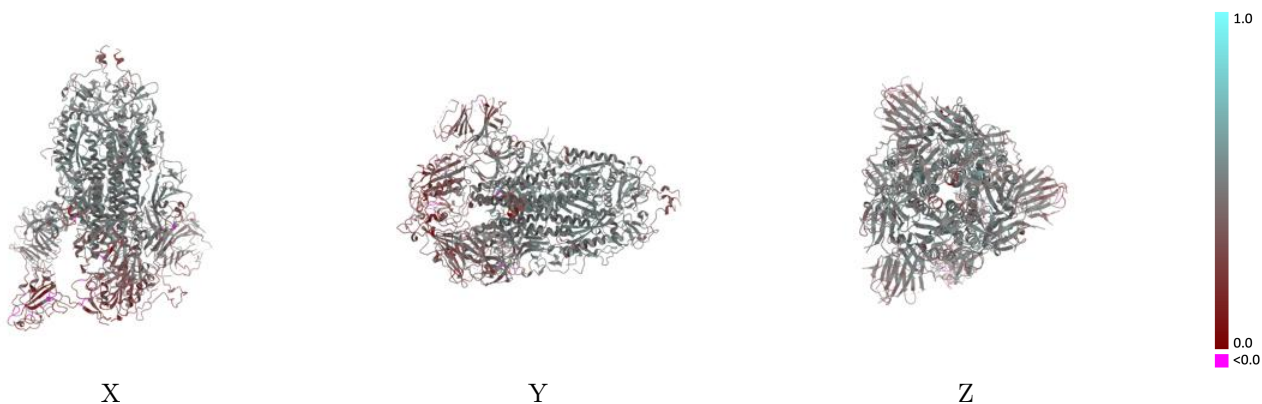
This section contains information regarding the fit between EMDB map EMD-26047 and PDB model 7TP7. Per-residue inclusion information can be found in section 3 on page 14.

9.1 Map-model overlay [i](#)



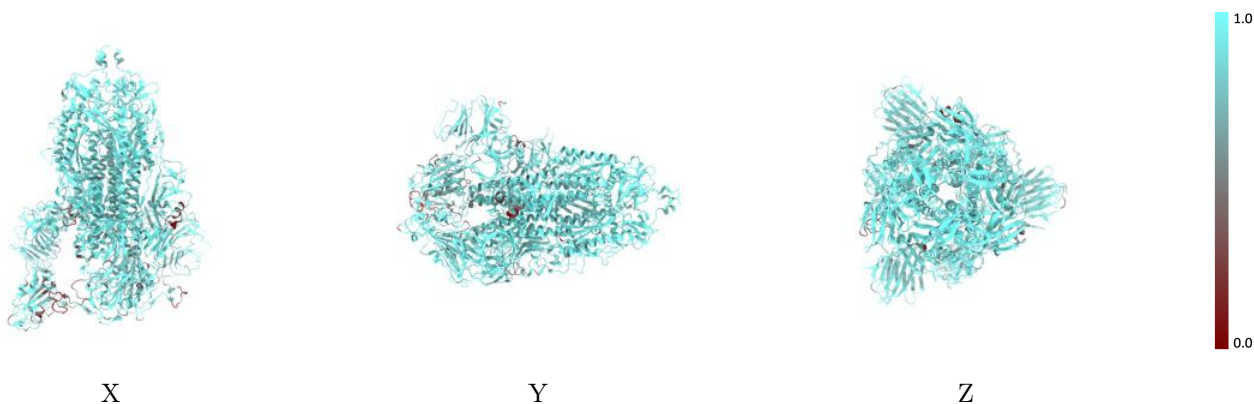
The images above show the 3D surface view of the map at the recommended contour level 0.8 at 50% transparency in yellow overlaid with a ribbon representation of the model coloured in blue. These images allow for the visual assessment of the quality of fit between the atomic model and the map.

9.2 Q-score mapped to coordinate model [i](#)



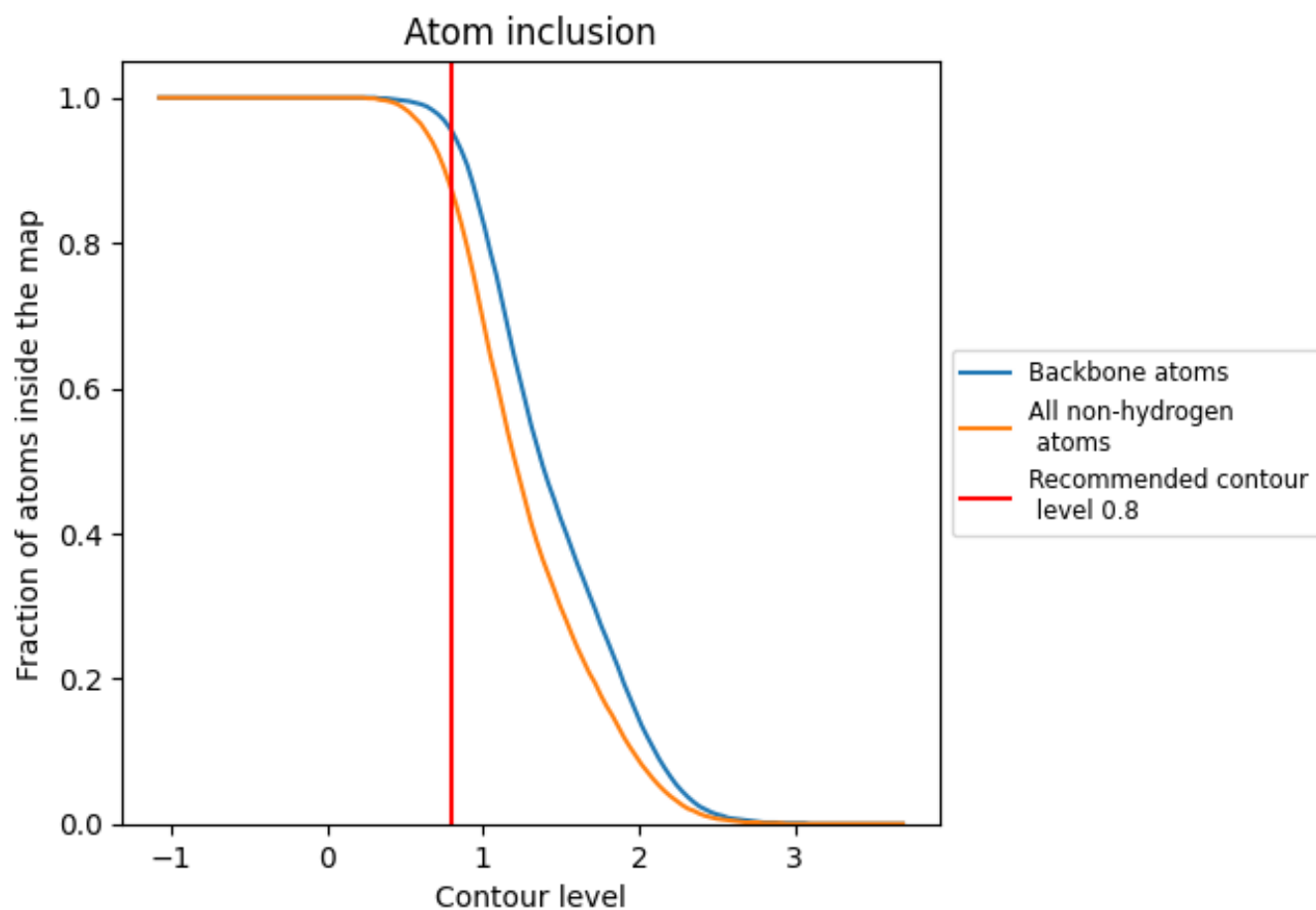
The images above show the model with each residue coloured according to its Q-score. This shows their resolvability in the map with higher Q-score values reflecting better resolvability. Please note: Q-score is calculating the resolvability of atoms, and thus high values are only expected at resolutions at which atoms can be resolved. Low Q-score values may therefore be expected for many entries.

9.3 Atom inclusion mapped to coordinate model [i](#)



The images above show the model with each residue coloured according to its atom inclusion. This shows to what extent they are inside the map at the recommended contour level (0.8).

































9.4 Atom inclusion [i](#)



At the recommended contour level, 95% of all backbone atoms, 87% of all non-hydrogen atoms, are inside the map.

9.5 Map-model fit summary

The table lists the average atom inclusion at the recommended contour level (0.8) and Q-score for the entire model and for each chain.

Chain	Atom inclusion	Q-score
All	 0.8720	 0.4300
A	 0.8620	 0.4230
B	 0.8860	 0.4300
C	 0.8790	 0.4390
D	 0.3930	 0.1150
E	 0.6790	 0.4450
F	 0.6790	 0.4460
G	 0.6790	 0.4210
H	 0.5360	 0.4220
I	 0.6790	 0.4570
J	 0.6790	 0.4190
K	 0.6430	 0.4570
L	 0.6070	 0.4120
M	 0.7500	 0.4830
N	 0.7140	 0.3630
O	 0.7860	 0.4220

