



# Full wwPDB X-ray Structure Validation Report ⓘ

Sep 5, 2023 – 01:44 AM EDT

PDB ID : 3TMZ  
Title : Crystal Structure of P450 2B4(H226Y) in complex with Amlodipine  
Authors : Shah, M.B.; Pascual, J.; Stout, C.D.; Halpert, J.R.  
Deposited on : 2011-09-01  
Resolution : 2.25 Å(reported)

This is a Full wwPDB X-ray Structure Validation Report for a publicly released PDB entry.

We welcome your comments at [validation@mail.wwpdb.org](mailto:validation@mail.wwpdb.org)

A user guide is available at

<https://www.wwpdb.org/validation/2017/XrayValidationReportHelp>

with specific help available everywhere you see the ⓘ symbol.

The types of validation reports are described at

<http://www.wwpdb.org/validation/2017/FAQs#types>.

---

The following versions of software and data (see [references ⓘ](#)) were used in the production of this report:

MolProbity : 4.02b-467  
Mogul : 1.8.5 (274361), CSD as541be (2020)  
Xtriage (Phenix) : 1.13  
EDS : 2.35  
buster-report : 1.1.7 (2018)  
Percentile statistics : 20191225.v01 (using entries in the PDB archive December 25th 2019)  
Refmac : 5.8.0158  
CCP4 : 7.0.044 (Gargrove)  
Ideal geometry (proteins) : Engh & Huber (2001)  
Ideal geometry (DNA, RNA) : Parkinson et al. (1996)  
Validation Pipeline (wwPDB-VP) : 2.35

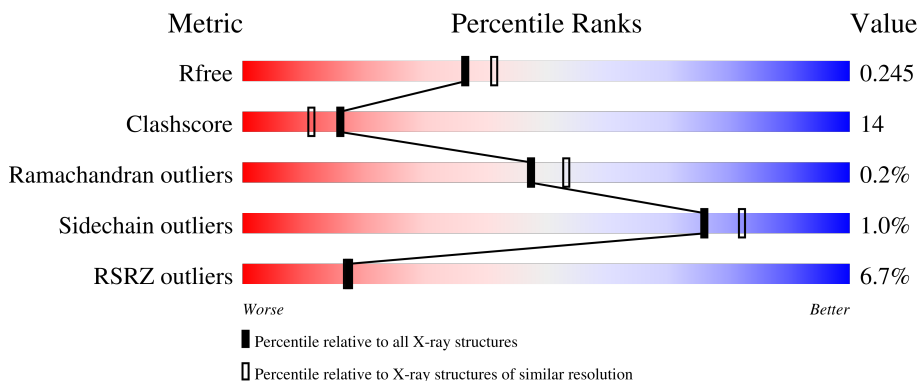
# 1 Overall quality at a glance

The following experimental techniques were used to determine the structure:

*X-RAY DIFFRACTION*

The reported resolution of this entry is 2.25 Å.

Percentile scores (ranging between 0-100) for global validation metrics of the entry are shown in the following graphic. The table shows the number of entries on which the scores are based.



Metric	Whole archive (#Entries)	Similar resolution (#Entries, resolution range(Å))
$R_{free}$	130704	2391 (2.26-2.22)
Clashscore	141614	2539 (2.26-2.22)
Ramachandran outliers	138981	2489 (2.26-2.22)
Sidechain outliers	138945	2490 (2.26-2.22)
RSRZ outliers	127900	2353 (2.26-2.22)

The table below summarises the geometric issues observed across the polymeric chains and their fit to the electron density. The red, orange, yellow and green segments of the lower bar indicate the fraction of residues that contain outliers for  $\geq 3$ , 2, 1 and 0 types of geometric quality criteria respectively. A grey segment represents the fraction of residues that are not modelled. The numeric value for each fraction is indicated below the corresponding segment, with a dot representing fractions  $\leq 5\%$ . The upper red bar (where present) indicates the fraction of residues that have poor fit to the electron density. The numeric value is given above the bar.

Mol	Chain	Length	Quality of chain
1	A	476	

The following table lists non-polymeric compounds, carbohydrate monomers and non-standard residues in protein, DNA, RNA chains that are outliers for geometric or electron-density-fit criteria:

Mol	Type	Chain	Res	Chirality	Geometry	Clashes	Electron density
4	06X	A	503[A]	-	-	X	-

*Continued on next page...*

*Continued from previous page...*

<b>Mol</b>	<b>Type</b>	<b>Chain</b>	<b>Res</b>	<b>Chirality</b>	<b>Geometry</b>	<b>Clashes</b>	<b>Electron density</b>
4	06X	A	503[B]	-	-	X	-
4	06X	A	504	-	-	X	-

## 2 Entry composition [i](#)

There are 5 unique types of molecules in this entry. The entry contains 4058 atoms, of which 0 are hydrogens and 0 are deuteriums.

In the tables below, the ZeroOcc column contains the number of atoms modelled with zero occupancy, the AltConf column contains the number of residues with at least one atom in alternate conformation and the Trace column contains the number of residues modelled with at most 2 atoms.

- Molecule 1 is a protein called Cytochrome P450 2B4.

Mol	Chain	Residues	Atoms					ZeroOcc	AltConf	Trace
			Total	C	N	O	S			
1	A	463	3694	2383	633	667	11	0	0	0

There are 33 discrepancies between the modelled and reference sequences:

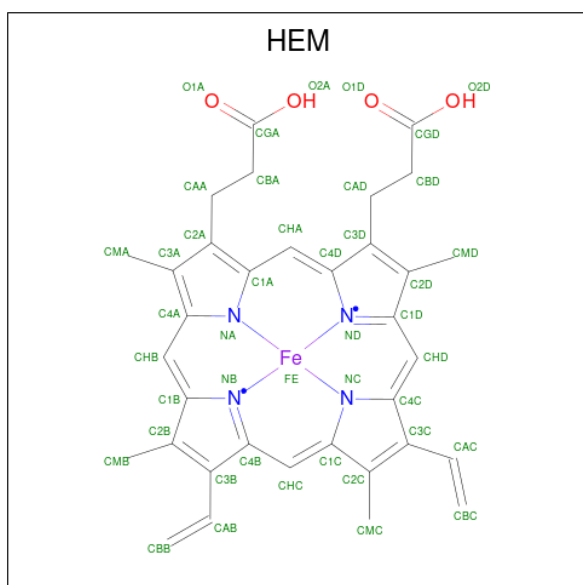
Chain	Residue	Modelled	Actual	Comment	Reference
A	21	ALA	GLU	engineered mutation	UNP P00178
A	?	-	PHE	deletion	UNP P00178
A	?	-	SER	deletion	UNP P00178
A	?	-	LEU	deletion	UNP P00178
A	?	-	LEU	deletion	UNP P00178
A	?	-	LEU	deletion	UNP P00178
A	?	-	LEU	deletion	UNP P00178
A	?	-	LEU	deletion	UNP P00178
A	?	-	ALA	deletion	UNP P00178
A	?	-	PHE	deletion	UNP P00178
A	?	-	LEU	deletion	UNP P00178
A	?	-	ALA	deletion	UNP P00178
A	?	-	GLY	deletion	UNP P00178
A	?	-	LEU	deletion	UNP P00178
A	?	-	LEU	deletion	UNP P00178
A	?	-	LEU	deletion	UNP P00178
A	?	-	LEU	deletion	UNP P00178
A	?	-	LEU	deletion	UNP P00178
A	?	-	PHE	deletion	UNP P00178
A	?	-	ARG	deletion	UNP P00178
A	22	LYS	GLY	engineered mutation	UNP P00178
A	23	LYS	HIS	engineered mutation	UNP P00178
A	24	THR	PRO	engineered mutation	UNP P00178
A	25	SER	LYS	engineered mutation	UNP P00178
A	26	SER	ALA	engineered mutation	UNP P00178
A	27	LYS	HIS	engineered mutation	UNP P00178
A	29	LYS	ARG	engineered mutation	UNP P00178

*Continued on next page...*

Continued from previous page...

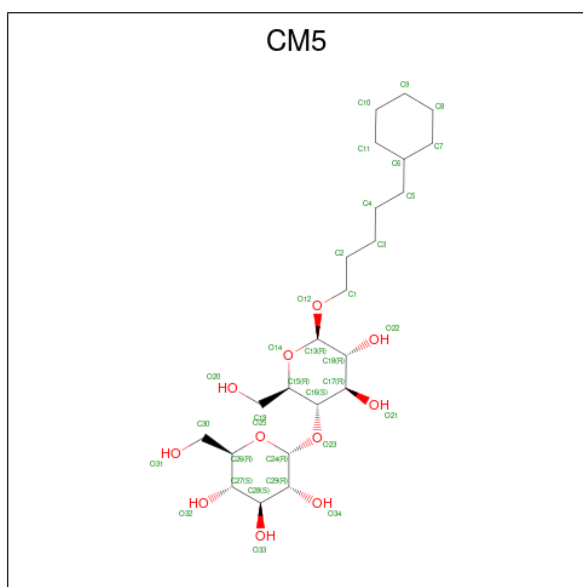
Chain	Residue	Modelled	Actual	Comment	Reference
A	221	SER	PRO	SEE REMARK 999	UNP P00178
A	226	TYR	HIS	engineered mutation	UNP P00178
A	492	HIS	-	expression tag	UNP P00178
A	493	HIS	-	expression tag	UNP P00178
A	494	HIS	-	expression tag	UNP P00178
A	495	HIS	-	expression tag	UNP P00178

- Molecule 2 is PROTOPORPHYRIN IX CONTAINING FE (three-letter code: HEM) (formula: C<sub>34</sub>H<sub>32</sub>FeN<sub>4</sub>O<sub>4</sub>).



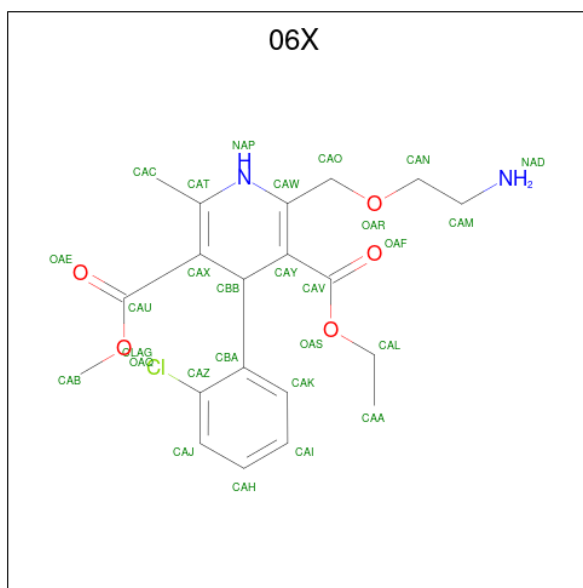
Mol	Chain	Residues	Atoms				ZeroOcc	AltConf	
2	A	1	Total	C	Fe	N	O	0	0
			43	34	1	4	4		

- Molecule 3 is 5-CYCLOHEXYL-1-PENTYL-BETA-D-MALTOSE (three-letter code: CM5) (formula: C<sub>23</sub>H<sub>42</sub>O<sub>11</sub>).



Mol	Chain	Residues	Atoms			ZeroOcc	AltConf
3	A	1	Total	C	O	0	0
			34	23	11		

- Molecule 4 is Amlodipine (three-letter code: 06X) (formula:  $C_{20}H_{25}ClN_2O_5$ ).



Mol	Chain	Residues	Atoms				ZeroOcc	AltConf	
4	A	1	Total	C	Cl	N	O	0	1
			56	40	2	4	10		
4	A	1	Total	C	Cl	N	O	0	0
			28	20	1	2	5		

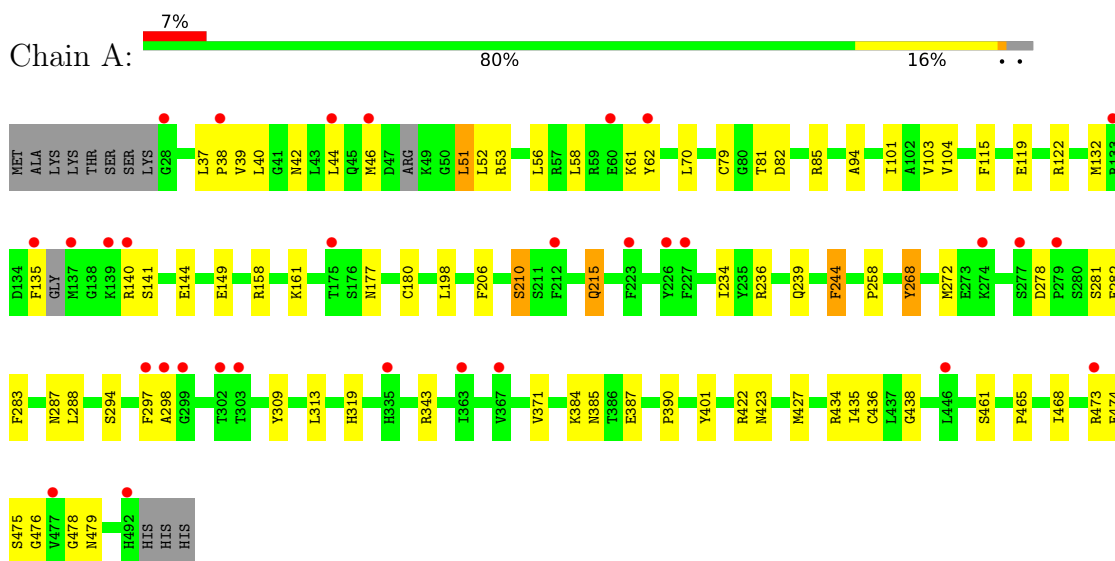
- Molecule 5 is water.

<b>Mol</b>	<b>Chain</b>	<b>Residues</b>	<b>Atoms</b>		<b>ZeroOcc</b>	<b>AltConf</b>
5	A	203	Total 203	O 203	0	0

### 3 Residue-property plots

These plots are drawn for all protein, RNA, DNA and oligosaccharide chains in the entry. The first graphic for a chain summarises the proportions of the various outlier classes displayed in the second graphic. The second graphic shows the sequence view annotated by issues in geometry and electron density. Residues are color-coded according to the number of geometric quality criteria for which they contain at least one outlier: green = 0, yellow = 1, orange = 2 and red = 3 or more. A red dot above a residue indicates a poor fit to the electron density ( $RSRZ > 2$ ). Stretches of 2 or more consecutive residues without any outlier are shown as a green connector. Residues present in the sample, but not in the model, are shown in grey.

- Molecule 1: Cytochrome P450 2B4





## 4 Data and refinement statistics i

Property	Value	Source
Space group	P 31 2 1	Depositor
Cell constants a, b, c, $\alpha$ , $\beta$ , $\gamma$	93.00Å 93.00Å 152.77Å 90.00° 90.00° 120.00°	Depositor
Resolution (Å)	38.93 – 2.25 38.94 – 2.25	Depositor EDS
% Data completeness (in resolution range)	96.4 (38.93-2.25) 96.5 (38.94-2.25)	Depositor EDS
$R_{merge}$	0.04	Depositor
$R_{sym}$	0.04	Depositor
$\langle I/\sigma(I) \rangle$ <sup>1</sup>	2.11 (at 2.24Å)	Xtrriage
Refinement program	REFMAC 5.5.0102	Depositor
R, $R_{free}$	0.191 , 0.251 0.211 , 0.245	Depositor DCC
$R_{free}$ test set	1786 reflections (5.00%)	wwPDB-VP
Wilson B-factor (Å <sup>2</sup> )	46.8	Xtrriage
Anisotropy	0.011	Xtrriage
Bulk solvent $k_{sol}$ (e/Å <sup>3</sup> ), $B_{sol}$ (Å <sup>2</sup> )	0.33 , 41.2	EDS
L-test for twinning <sup>2</sup>	$\langle  L  \rangle = 0.47$ , $\langle L^2 \rangle = 0.30$	Xtrriage
Estimated twinning fraction	0.037 for -h,-k,l	Xtrriage
$F_o, F_c$ correlation	0.95	EDS
Total number of atoms	4058	wwPDB-VP
Average B, all atoms (Å <sup>2</sup> )	48.0	wwPDB-VP

Xtrriage's analysis on translational NCS is as follows: *The largest off-origin peak in the Patterson function is 4.35% of the height of the origin peak. No significant pseudotranslation is detected.*

<sup>1</sup>Intensities estimated from amplitudes.

<sup>2</sup>Theoretical values of  $\langle |L| \rangle$ ,  $\langle L^2 \rangle$  for acentric reflections are 0.5, 0.333 respectively for untwinned datasets, and 0.375, 0.2 for perfectly twinned datasets.

## 5 Model quality

### 5.1 Standard geometry

Bond lengths and bond angles in the following residue types are not validated in this section: 06X, HEM, CM5

The Z score for a bond length (or angle) is the number of standard deviations the observed value is removed from the expected value. A bond length (or angle) with  $|Z| > 5$  is considered an outlier worth inspection. RMSZ is the root-mean-square of all Z scores of the bond lengths (or angles).

Mol	Chain	Bond lengths		Bond angles	
		RMSZ	# Z  >5	RMSZ	# Z  >5
1	A	1.15	7/3786 (0.2%)	0.86	1/5128 (0.0%)

All (7) bond length outliers are listed below:

Mol	Chain	Res	Type	Atoms	Z	Observed(Å)	Ideal(Å)
1	A	215	GLN	C-N	8.38	1.53	1.34
1	A	180	CYS	CB-SG	-5.70	1.72	1.81
1	A	79	CYS	CB-SG	-5.48	1.72	1.81
1	A	210	SER	CB-OG	-5.45	1.35	1.42
1	A	436	CYS	CB-SG	-5.37	1.73	1.81
1	A	268	TYR	CD1-CE1	5.33	1.47	1.39
1	A	244	PHE	CB-CG	5.30	1.60	1.51

All (1) bond angle outliers are listed below:

Mol	Chain	Res	Type	Atoms	Z	Observed(°)	Ideal(°)
1	A	343	ARG	NE-CZ-NH2	-5.17	117.72	120.30

There are no chirality outliers.

There are no planarity outliers.

### 5.2 Too-close contacts

In the following table, the Non-H and H(model) columns list the number of non-hydrogen atoms and hydrogen atoms in the chain respectively. The H(added) column lists the number of hydrogen atoms added and optimized by MolProbity. The Clashes column lists the number of clashes within the asymmetric unit, whereas Symm-Clashes lists symmetry-related clashes.

Mol	Chain	Non-H	H(model)	H(added)	Clashes	Symm-Clashes
1	A	3694	0	3670	75	0
2	A	43	0	30	3	0
3	A	34	0	42	6	0
4	A	84	0	72	48	0
5	A	203	0	0	11	0
All	All	4058	0	3814	111	0

The all-atom clashscore is defined as the number of clashes found per 1000 atoms (including hydrogen atoms). The all-atom clashscore for this structure is 14.

All (111) close contacts within the same asymmetric unit are listed below, sorted by their clash magnitude.

Atom-1	Atom-2	Interatomic distance (Å)	Clash overlap (Å)
1:A:215:GLN:CG	4:A:504:06X:H3	1.76	1.13
1:A:215:GLN:HG2	4:A:504:06X:H3	1.17	1.12
1:A:215:GLN:HG2	4:A:504:06X:CAI	1.89	1.02
1:A:140:ARG:HG3	1:A:144:GLU:OE1	1.74	0.87
1:A:244:PHE:HB3	3:A:502:CM5:H21A	1.63	0.81
4:A:503[B]:06X:CAI	4:A:503[B]:06X:H9	2.11	0.80
1:A:215:GLN:CD	4:A:504:06X:H3	2.03	0.79
1:A:474:GLU:OE2	1:A:474:GLU:HA	1.88	0.73
4:A:503[B]:06X:OAS	4:A:503[B]:06X:CBA	2.38	0.71
1:A:46:MET:CE	1:A:58:LEU:HD11	2.21	0.70
1:A:46:MET:HE1	1:A:58:LEU:HD11	1.75	0.69
4:A:503[B]:06X:H9	4:A:503[B]:06X:CAH	2.22	0.68
1:A:101:ILE:HG22	1:A:103:VAL:HG12	1.77	0.66
1:A:272:MET:HG2	1:A:283:PHE:O	1.95	0.66
1:A:268:TYR:OH	1:A:287:ASN:HB3	1.97	0.64
4:A:504:06X:NAP	5:A:794:HOH:O	2.21	0.64
1:A:40:LEU:HD13	1:A:44:LEU:HD21	1.80	0.64
1:A:132:MET:HA	1:A:135:PHE:CE2	2.33	0.63
1:A:103:VAL:HG13	1:A:104:VAL:HG13	1.83	0.60
1:A:476:GLY:HA3	5:A:803:HOH:O	2.01	0.60
1:A:319:HIS:ND1	5:A:654:HOH:O	2.31	0.60
3:A:502:CM5:O34	3:A:502:CM5:C19	2.50	0.60
2:A:501:HEM:HBB2	2:A:501:HEM:HMB2	1.84	0.59
4:A:503[A]:06X:OAQ	4:A:503[A]:06X:CAC	2.51	0.58
1:A:101:ILE:HG21	4:A:503[B]:06X:H2	1.86	0.57
4:A:503[B]:06X:CAI	4:A:503[B]:06X:CAA	2.81	0.57
1:A:268:TYR:CE1	1:A:288:LEU:HB2	2.39	0.57
1:A:158:ARG:NH1	5:A:711:HOH:O	2.30	0.57
4:A:503[B]:06X:H26	4:A:503[B]:06X:H19	1.70	0.56

*Continued on next page...*

*Continued from previous page...*

Atom-1	Atom-2	Interatomic distance (Å)	Clash overlap (Å)
1:A:239:GLN:HG3	5:A:781:HOH:O	2.06	0.56
4:A:504:06X:OAS	4:A:504:06X:CBA	2.53	0.55
1:A:427:MET:O	1:A:427:MET:HG3	2.07	0.55
1:A:42:ASN:O	1:A:46:MET:HG2	2.06	0.55
1:A:309:TYR:CE2	1:A:313:LEU:HD11	2.42	0.55
3:A:502:CM5:O34	3:A:502:CM5:C15	2.55	0.54
1:A:422:ARG:HD3	5:A:738:HOH:O	2.06	0.54
1:A:473:ARG:O	1:A:474:GLU:OE2	2.26	0.54
4:A:504:06X:CAK	4:A:504:06X:OAE	2.56	0.54
1:A:61:LYS:HD3	1:A:62:TYR:CZ	2.43	0.54
4:A:503[B]:06X:H19	4:A:503[B]:06X:NAP	2.23	0.53
1:A:119:GLU:OE1	1:A:122:ARG:NH1	2.41	0.53
1:A:401:TYR:HB3	1:A:423:ASN:OD1	2.08	0.53
4:A:503[B]:06X:H15	4:A:503[B]:06X:OAQ	2.09	0.53
4:A:503[A]:06X:H19	4:A:503[A]:06X:H26	1.73	0.52
1:A:387:GLU:OE1	4:A:504:06X:NAD	2.42	0.52
4:A:504:06X:CAK	4:A:504:06X:H6	2.39	0.52
1:A:101:ILE:CD1	4:A:504:06X:H14	2.40	0.52
1:A:103:VAL:CG2	1:A:234:ILE:HD13	2.40	0.52
1:A:298:ALA:HA	4:A:503[B]:06X:CAO	2.39	0.52
4:A:503[B]:06X:OAQ	4:A:503[B]:06X:CAC	2.57	0.52
1:A:82:ASP:HB2	5:A:601:HOH:O	2.10	0.50
4:A:503[B]:06X:CBA	4:A:503[B]:06X:OAE	2.60	0.50
1:A:258:PRO:HD2	5:A:641:HOH:O	2.13	0.49
4:A:503[A]:06X:OAF	4:A:503[A]:06X:CAO	2.58	0.49
2:A:501:HEM:HBB2	2:A:501:HEM:CMB	2.42	0.49
1:A:101:ILE:HD12	4:A:504:06X:H14	1.95	0.48
4:A:503[B]:06X:NAP	4:A:503[B]:06X:CAN	2.72	0.48
1:A:52:LEU:O	1:A:56:LEU:HG	2.14	0.48
3:A:502:CM5:O34	3:A:502:CM5:H15	2.14	0.48
1:A:115:PHE:CZ	4:A:503[B]:06X:H7	2.49	0.47
1:A:438:GLY:HA3	2:A:501:HEM:C3C	2.50	0.47
1:A:51:LEU:HD23	1:A:51:LEU:HA	1.77	0.47
3:A:502:CM5:O25	3:A:502:CM5:H191	2.15	0.47
1:A:94:ALA:O	1:A:371:VAL:HA	2.14	0.47
1:A:298:ALA:HA	4:A:503[A]:06X:CAO	2.45	0.47
1:A:210:SER:HA	5:A:795:HOH:O	2.14	0.47
4:A:503[A]:06X:H26	4:A:503[A]:06X:CAN	2.28	0.47
1:A:46:MET:HE3	1:A:58:LEU:HD11	1.96	0.47
4:A:503[A]:06X:OAQ	4:A:503[A]:06X:H15	2.14	0.46
1:A:81:THR:O	1:A:85:ARG:HG3	2.15	0.46

*Continued on next page...*

*Continued from previous page...*

Atom-1	Atom-2	Interatomic distance (Å)	Clash overlap (Å)
1:A:268:TYR:CG	1:A:288:LEU:HD13	2.50	0.46
1:A:384:LYS:O	1:A:385:ASN:HB2	2.15	0.46
1:A:294:SER:HB3	5:A:611:HOH:O	2.15	0.46
1:A:465:PRO:HA	1:A:468:ILE:HD12	1.96	0.46
4:A:504:06X:OAQ	4:A:504:06X:CAC	2.64	0.46
4:A:503[A]:06X:H19	4:A:503[A]:06X:NAP	2.30	0.46
4:A:503[A]:06X:CAN	4:A:503[A]:06X:NAP	2.76	0.46
1:A:53:ARG:HD2	1:A:53:ARG:HA	1.83	0.45
4:A:504:06X:CAK	4:A:504:06X:CAL	2.94	0.45
1:A:278:ASP:O	1:A:281:SER:HB3	2.16	0.45
1:A:476:GLY:C	1:A:478:GLY:H	2.19	0.45
4:A:504:06X:CAI	4:A:504:06X:H6	2.45	0.45
1:A:298:ALA:HA	4:A:503[B]:06X:OAR	2.16	0.45
1:A:474:GLU:OE2	1:A:474:GLU:CA	2.63	0.45
4:A:503[B]:06X:CAO	4:A:503[B]:06X:OAF	2.65	0.45
1:A:161:LYS:HA	1:A:161:LYS:HD3	1.82	0.44
1:A:476:GLY:O	1:A:478:GLY:N	2.51	0.44
1:A:61:LYS:HD3	1:A:62:TYR:CE1	2.53	0.44
1:A:103:VAL:HG22	1:A:234:ILE:HD13	1.99	0.43
1:A:206:PHE:HD2	4:A:503[B]:06X:H12	1.82	0.43
1:A:475:SER:O	1:A:475:SER:OG	2.31	0.43
4:A:503[B]:06X:CAK	4:A:503[B]:06X:CAV	2.95	0.43
4:A:504:06X:OAS	4:A:504:06X:CAK	2.66	0.43
4:A:504:06X:OAF	4:A:504:06X:CAO	2.66	0.43
1:A:298:ALA:HA	4:A:503[A]:06X:OAR	2.18	0.43
1:A:101:ILE:HD12	4:A:503[B]:06X:H1	2.01	0.43
1:A:461:SER:OG	5:A:691:HOH:O	2.21	0.43
1:A:476:GLY:C	1:A:478:GLY:N	2.72	0.43
1:A:434:ARG:O	1:A:435:ILE:C	2.56	0.42
1:A:198:LEU:HA	1:A:198:LEU:HD23	1.83	0.42
1:A:37:LEU:HB3	1:A:38:PRO:CD	2.49	0.42
1:A:282:GLU:OE1	1:A:282:GLU:HA	2.19	0.42
1:A:70:LEU:HD13	4:A:504:06X:OAF	2.20	0.42
1:A:298:ALA:HA	4:A:503[B]:06X:H16	2.02	0.41
1:A:141:SER:OG	1:A:144:GLU:HG3	2.20	0.41
3:A:502:CM5:O34	3:A:502:CM5:H192	2.19	0.41
4:A:503[B]:06X:CAA	4:A:503[B]:06X:CAK	2.99	0.41
1:A:206:PHE:HD2	4:A:503[B]:06X:CAB	2.34	0.40
1:A:215:GLN:CD	4:A:504:06X:CAI	2.84	0.40
1:A:236:ARG:HA	1:A:239:GLN:HG2	2.03	0.40
1:A:149:GLU:OE1	1:A:177:ASN:HB3	2.21	0.40

There are no symmetry-related clashes.

## 5.3 Torsion angles [i](#)

### 5.3.1 Protein backbone [i](#)

In the following table, the Percentiles column shows the percent Ramachandran outliers of the chain as a percentile score with respect to all X-ray entries followed by that with respect to entries of similar resolution.

The Analysed column shows the number of residues for which the backbone conformation was analysed, and the total number of residues.

Mol	Chain	Analysed	Favoured	Allowed	Outliers	Percentiles
1	A	457/476 (96%)	437 (96%)	19 (4%)	1 (0%)	47 53

All (1) Ramachandran outliers are listed below:

Mol	Chain	Res	Type
1	A	390	PRO

### 5.3.2 Protein sidechains [i](#)

In the following table, the Percentiles column shows the percent sidechain outliers of the chain as a percentile score with respect to all X-ray entries followed by that with respect to entries of similar resolution.

The Analysed column shows the number of residues for which the sidechain conformation was analysed, and the total number of residues.

Mol	Chain	Analysed	Rotameric	Outliers	Percentiles
1	A	404/421 (96%)	400 (99%)	4 (1%)	76 82

All (4) residues with a non-rotameric sidechain are listed below:

Mol	Chain	Res	Type
1	A	39	VAL
1	A	51	LEU
1	A	297	PHE
1	A	479	ASN

Sometimes sidechains can be flipped to improve hydrogen bonding and reduce clashes. All (1) such sidechains are listed below:

Mol	Chain	Res	Type
1	A	286	GLN

### 5.3.3 RNA [i](#)

There are no RNA molecules in this entry.

### 5.4 Non-standard residues in protein, DNA, RNA chains [i](#)

There are no non-standard protein/DNA/RNA residues in this entry.

### 5.5 Carbohydrates [i](#)

There are no monosaccharides in this entry.

### 5.6 Ligand geometry [i](#)

5 ligands are modelled in this entry.

In the following table, the Counts columns list the number of bonds (or angles) for which Mogul statistics could be retrieved, the number of bonds (or angles) that are observed in the model and the number of bonds (or angles) that are defined in the Chemical Component Dictionary. The Link column lists molecule types, if any, to which the group is linked. The Z score for a bond length (or angle) is the number of standard deviations the observed value is removed from the expected value. A bond length (or angle) with  $|Z| > 2$  is considered an outlier worth inspection. RMSZ is the root-mean-square of all Z scores of the bond lengths (or angles).

Mol	Type	Chain	Res	Link	Bond lengths			Bond angles		
					Counts	RMSZ	# $ Z  > 2$	Counts	RMSZ	# $ Z  > 2$
4	06X	A	503[B]	2	29,29,29	3.15	9 (31%)	37,39,39	3.68	21 (56%)
4	06X	A	503[A]	2	29,29,29	3.13	11 (37%)	37,39,39	5.52	23 (62%)
2	HEM	A	501	1,4	41,50,50	2.36	15 (36%)	45,82,82	1.39	6 (13%)
4	06X	A	504	-	29,29,29	3.06	9 (31%)	37,39,39	3.41	19 (51%)
3	CM5	A	502	-	36,36,36	1.26	3 (8%)	49,49,49	2.36	12 (24%)

In the following table, the Chirals column lists the number of chiral outliers, the number of chiral centers analysed, the number of these observed in the model and the number defined in the Chemical Component Dictionary. Similar counts are reported in the Torsion and Rings columns. '·' means no outliers of that kind were identified.

Mol	Type	Chain	Res	Link	Chirals	Torsions	Rings
4	06X	A	503[B]	2	-	1/22/42/42	0/2/2/2
4	06X	A	503[A]	2	-	5/22/42/42	0/2/2/2
2	HEM	A	501	1,4	-	2/12/54/54	-
4	06X	A	504	-	-	9/22/42/42	0/2/2/2
3	CM5	A	502	-	-	9/17/65/65	0/3/3/3

All (47) bond length outliers are listed below:

Mol	Chain	Res	Type	Atoms	Z	Observed(Å)	Ideal(Å)
4	A	504	06X	OAE-CAU	9.73	1.41	1.21
4	A	503[B]	06X	OAR-CAO	-9.00	1.19	1.42
4	A	504	06X	OAQ-CAU	8.59	1.52	1.33
2	A	501	HEM	C3C-C2C	-8.55	1.28	1.40
4	A	503[A]	06X	CBB-CAX	-7.89	1.41	1.52
4	A	503[A]	06X	CAC-CAT	-7.14	1.38	1.49
4	A	503[B]	06X	OAS-CAL	-6.76	1.24	1.46
4	A	503[B]	06X	CAW-NAP	-6.74	1.26	1.37
4	A	504	06X	CAU-CAX	6.50	1.59	1.47
2	A	501	HEM	C3D-C2D	5.99	1.49	1.36
4	A	503[A]	06X	CBA-CBB	-5.92	1.44	1.53
3	A	502	CM5	O12-C1	-5.90	1.26	1.43
4	A	503[B]	06X	CAT-CAX	-5.51	1.29	1.35
4	A	503[B]	06X	CAC-CAT	-5.32	1.41	1.49
4	A	503[B]	06X	OAF-CAV	4.81	1.31	1.21
4	A	503[A]	06X	CAM-CAN	-4.59	1.31	1.50
4	A	503[A]	06X	CAV-CAY	-4.42	1.39	1.47
4	A	503[A]	06X	CAW-NAP	-4.35	1.30	1.37
2	A	501	HEM	C3B-C2B	-3.98	1.29	1.37
4	A	503[A]	06X	OAR-CAO	-3.88	1.32	1.42
2	A	501	HEM	FE-NB	-3.63	1.78	1.96
4	A	503[A]	06X	OAS-CAL	-3.62	1.34	1.46
4	A	503[A]	06X	OAQ-CAB	-3.51	1.37	1.45
4	A	504	06X	CAT-NAP	-3.37	1.34	1.38
4	A	504	06X	CAV-CAY	3.22	1.53	1.47
4	A	503[B]	06X	CAU-CAX	3.20	1.53	1.47
4	A	503[A]	06X	CAT-NAP	3.17	1.42	1.38
4	A	504	06X	CAT-CAX	3.15	1.39	1.35
2	A	501	HEM	C2A-C3A	-3.01	1.28	1.37
2	A	501	HEM	O2D-CGD	-2.77	1.21	1.30
4	A	503[A]	06X	CBB-CAY	-2.72	1.48	1.52
2	A	501	HEM	C1A-CHA	-2.66	1.33	1.41
2	A	501	HEM	CHC-C4B	-2.57	1.33	1.41

*Continued on next page...*



*Continued from previous page...*

Mol	Chain	Res	Type	Atoms	Z	Observed(Å)	Ideal(Å)
4	A	504	06X	CAW-CAY	2.46	1.39	1.36
4	A	503[B]	06X	CAW-CAY	2.45	1.39	1.36
2	A	501	HEM	O2A-CGA	-2.44	1.22	1.30
3	A	502	CM5	O23-C24	-2.39	1.35	1.41
2	A	501	HEM	C3B-C4B	-2.37	1.40	1.44
4	A	503[B]	06X	CAV-CAY	2.35	1.51	1.47
4	A	504	06X	CAW-NAP	-2.34	1.33	1.37
2	A	501	HEM	C3C-CAC	2.31	1.52	1.47
2	A	501	HEM	C4A-CHB	-2.29	1.34	1.41
2	A	501	HEM	CHD-C1D	-2.28	1.34	1.41
4	A	504	06X	OAR-CAO	-2.18	1.36	1.42
2	A	501	HEM	CAB-C3B	2.10	1.53	1.47
3	A	502	CM5	O12-C13	2.08	1.43	1.40
2	A	501	HEM	C1B-C2B	-2.04	1.40	1.44

All (81) bond angle outliers are listed below:

Mol	Chain	Res	Type	Atoms	Z	Observed(°)	Ideal(°)
4	A	503[A]	06X	CAZ-CBA-CBB	15.83	145.10	123.98
4	A	503[A]	06X	CAK-CBA-CBB	-11.65	97.52	119.44
4	A	503[A]	06X	CBB-CAY-CAW	-10.95	107.03	121.53
4	A	503[B]	06X	CAC-CAT-CAX	-10.25	117.36	127.62
4	A	504	06X	CAT-NAP-CAW	-9.97	114.13	122.43
4	A	503[A]	06X	CBB-CAX-CAT	-9.86	109.40	120.85
4	A	503[A]	06X	CAC-CAT-CAX	-9.60	118.02	127.62
4	A	504	06X	CAX-CAT-NAP	8.91	126.66	119.27
4	A	503[A]	06X	CAT-NAP-CAW	-8.79	115.11	122.43
4	A	503[B]	06X	CAX-CAT-NAP	8.57	126.38	119.27
3	A	502	CM5	C24-O23-C16	8.39	138.72	117.96
4	A	503[B]	06X	OAQ-CAU-CAX	7.43	125.55	112.30
4	A	503[B]	06X	OAS-CAV-CAY	7.20	125.15	112.31
3	A	502	CM5	O23-C24-C29	-6.81	90.45	108.10
4	A	503[A]	06X	CBA-CBB-CAX	6.78	125.00	111.05
4	A	503[A]	06X	CAB-OAQ-CAU	-6.11	104.30	115.86
4	A	503[A]	06X	CAY-CAW-NAP	6.00	126.95	120.55
4	A	503[A]	06X	CAL-OAS-CAV	-6.00	105.87	116.50
4	A	504	06X	CAY-CAW-NAP	5.80	126.73	120.55
4	A	504	06X	OAQ-CAU-OAE	-5.66	112.63	123.53
4	A	503[A]	06X	CAX-CAT-NAP	5.47	123.81	119.27
4	A	503[B]	06X	CAT-NAP-CAW	-5.47	117.88	122.43
4	A	503[B]	06X	OAQ-CAU-OAE	-5.26	113.41	123.53
4	A	504	06X	CAB-OAQ-CAU	-5.25	105.94	115.86

*Continued on next page...*

*Continued from previous page...*

Mol	Chain	Res	Type	Atoms	Z	Observed(°)	Ideal(°)
4	A	503[B]	06X	CAB-OAQ-CAU	-5.02	106.37	115.86
4	A	503[B]	06X	OAF-CAV-CAY	-4.95	114.96	125.20
4	A	503[A]	06X	OAS-CAV-CAY	4.65	120.60	112.31
4	A	503[A]	06X	OAQ-CAU-CAX	4.57	120.44	112.30
4	A	504	06X	CAC-CAT-CAX	-4.53	123.09	127.62
4	A	503[A]	06X	CBB-CAX-CAU	4.48	128.03	117.15
4	A	504	06X	OAQ-CAU-CAX	4.35	120.06	112.30
3	A	502	CM5	C9-C8-C7	4.15	119.87	111.42
4	A	504	06X	OAS-CAV-CAY	4.11	119.63	112.31
4	A	503[B]	06X	CAV-CAY-CAW	4.02	127.22	121.33
3	A	502	CM5	C10-C11-C6	-4.01	104.57	112.15
4	A	504	06X	CAL-OAS-CAV	-3.94	109.52	116.50
3	A	502	CM5	O12-C1-C2	-3.91	95.86	109.56
4	A	503[A]	06X	OAR-CAN-CAM	3.66	123.39	109.66
4	A	503[A]	06X	CAX-CBB-CAY	3.64	115.83	109.78
4	A	503[A]	06X	OAF-CAV-CAY	-3.56	117.84	125.20
4	A	503[B]	06X	OAR-CAN-CAM	3.52	122.89	109.66
3	A	502	CM5	C13-O14-C15	3.49	120.55	113.69
4	A	503[A]	06X	CAC-CAT-NAP	3.48	117.59	113.45
3	A	502	CM5	C5-C6-C7	3.46	120.38	112.11
4	A	504	06X	CBB-CAX-CAU	3.39	125.39	117.15
4	A	503[A]	06X	CBB-CAY-CAV	3.33	125.25	117.15
4	A	503[A]	06X	CAO-CAW-NAP	-3.29	110.29	115.49
3	A	502	CM5	O25-C26-C27	3.29	115.67	109.69
4	A	503[B]	06X	CAK-CBA-CAZ	3.22	120.01	116.81
4	A	504	06X	CAU-CAX-CAT	-3.20	115.09	122.40
4	A	504	06X	CAK-CBA-CAZ	3.19	119.98	116.81
2	A	501	HEM	C1B-NB-C4B	-3.06	101.91	105.07
4	A	503[B]	06X	OAS-CAV-OAF	-3.05	117.84	123.34
4	A	504	06X	CAZ-CBA-CBB	-3.01	119.96	123.98
4	A	504	06X	CAC-CAT-NAP	-3.00	109.88	113.45
4	A	503[B]	06X	CAZ-CBA-CBB	-2.95	120.04	123.98
3	A	502	CM5	C19-C15-C16	-2.90	104.87	113.33
4	A	503[A]	06X	CAV-CAY-CAW	2.82	125.45	121.33
4	A	503[B]	06X	CAY-CAW-NAP	2.79	123.53	120.55
4	A	503[A]	06X	OAE-CAU-CAX	-2.74	119.54	125.20
4	A	503[A]	06X	CBA-CBB-CAY	2.70	116.61	111.05
2	A	501	HEM	O2D-CGD-CBD	2.62	122.46	114.03
3	A	502	CM5	C28-C27-C26	2.61	114.89	110.24
2	A	501	HEM	CHC-C4B-NB	2.44	127.08	124.43
4	A	503[B]	06X	OAS-CAL-CAA	-2.36	99.76	108.42
4	A	503[B]	06X	CAC-CAT-NAP	2.23	116.10	113.45

*Continued on next page...*

Continued from previous page...

Mol	Chain	Res	Type	Atoms	Z	Observed(°)	Ideal(°)
4	A	504	06X	CAX-CBB-CAY	-2.22	106.09	109.78
4	A	504	06X	CAJ-CAZ-CBA	-2.22	119.98	121.99
2	A	501	HEM	CHC-C4B-C3B	-2.21	121.18	124.57
4	A	503[B]	06X	CBB-CAX-CAT	-2.20	118.30	120.85
4	A	503[B]	06X	CAX-CBB-CAY	-2.19	106.14	109.78
4	A	504	06X	OAF-CAV-CAY	-2.17	120.71	125.20
4	A	503[B]	06X	CAJ-CAZ-CBA	-2.17	120.02	121.99
4	A	503[B]	06X	OAE-CAU-CAX	-2.14	120.78	125.20
3	A	502	CM5	C29-C28-C27	2.12	114.52	110.82
4	A	504	06X	CBB-CAY-CAW	-2.12	118.73	121.53
4	A	503[B]	06X	CBB-CAY-CAW	-2.10	118.75	121.53
3	A	502	CM5	C8-C7-C6	-2.09	108.19	112.15
2	A	501	HEM	CAD-C3D-C4D	2.05	128.24	124.66
2	A	501	HEM	C4D-C3D-C2D	-2.04	103.92	106.90
4	A	504	06X	OAS-CAV-OAF	-2.04	119.66	123.34

There are no chirality outliers.

All (26) torsion outliers are listed below:

Mol	Chain	Res	Type	Atoms
4	A	504	06X	CAY-CAV-OAS-CAL
4	A	504	06X	CAW-CAO-OAR-CAN
4	A	504	06X	OAF-CAV-OAS-CAL
4	A	504	06X	CAX-CAU-OAQ-CAB
3	A	502	CM5	O25-C24-O23-C16
4	A	504	06X	OAE-CAU-OAQ-CAB
3	A	502	CM5	O14-C15-C19-O20
3	A	502	CM5	C16-C15-C19-O20
3	A	502	CM5	C1-C2-C3-C4
3	A	502	CM5	C4-C5-C6-C7
3	A	502	CM5	O14-C13-O12-C1
4	A	504	06X	OAE-CAU-CAX-CAT
3	A	502	CM5	C18-C13-O12-C1
3	A	502	CM5	O25-C26-C30-O31
3	A	502	CM5	C4-C5-C6-C11
4	A	503[B]	06X	OAE-CAU-OAQ-CAB
4	A	503[A]	06X	CAZ-CBA-CBB-CAX
4	A	503[A]	06X	CAZ-CBA-CBB-CAY
4	A	504	06X	OAQ-CAU-CAX-CAT
4	A	504	06X	CAA-CAL-OAS-CAV
2	A	501	HEM	CAA-CBA-CGA-O2A
4	A	503[A]	06X	CAX-CAU-OAQ-CAB

Continued on next page...

*Continued from previous page...*

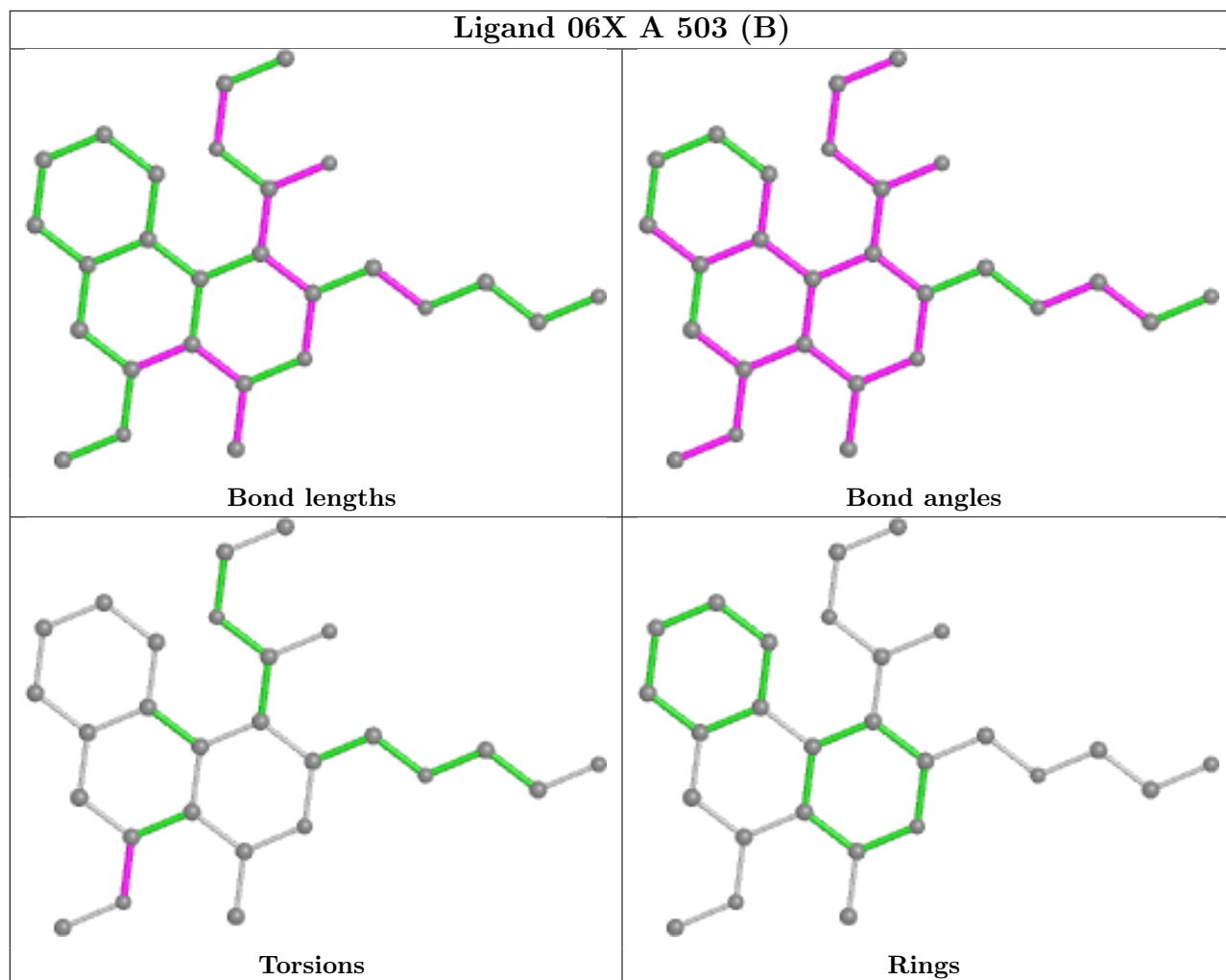
Mol	Chain	Res	Type	Atoms
2	A	501	HEM	CAA-CBA-CGA-O1A
4	A	503[A]	06X	CAK-CBA-CBB-CAX
4	A	504	06X	OAE-CAU-CAX-CBB
4	A	503[A]	06X	CAK-CBA-CBB-CAY

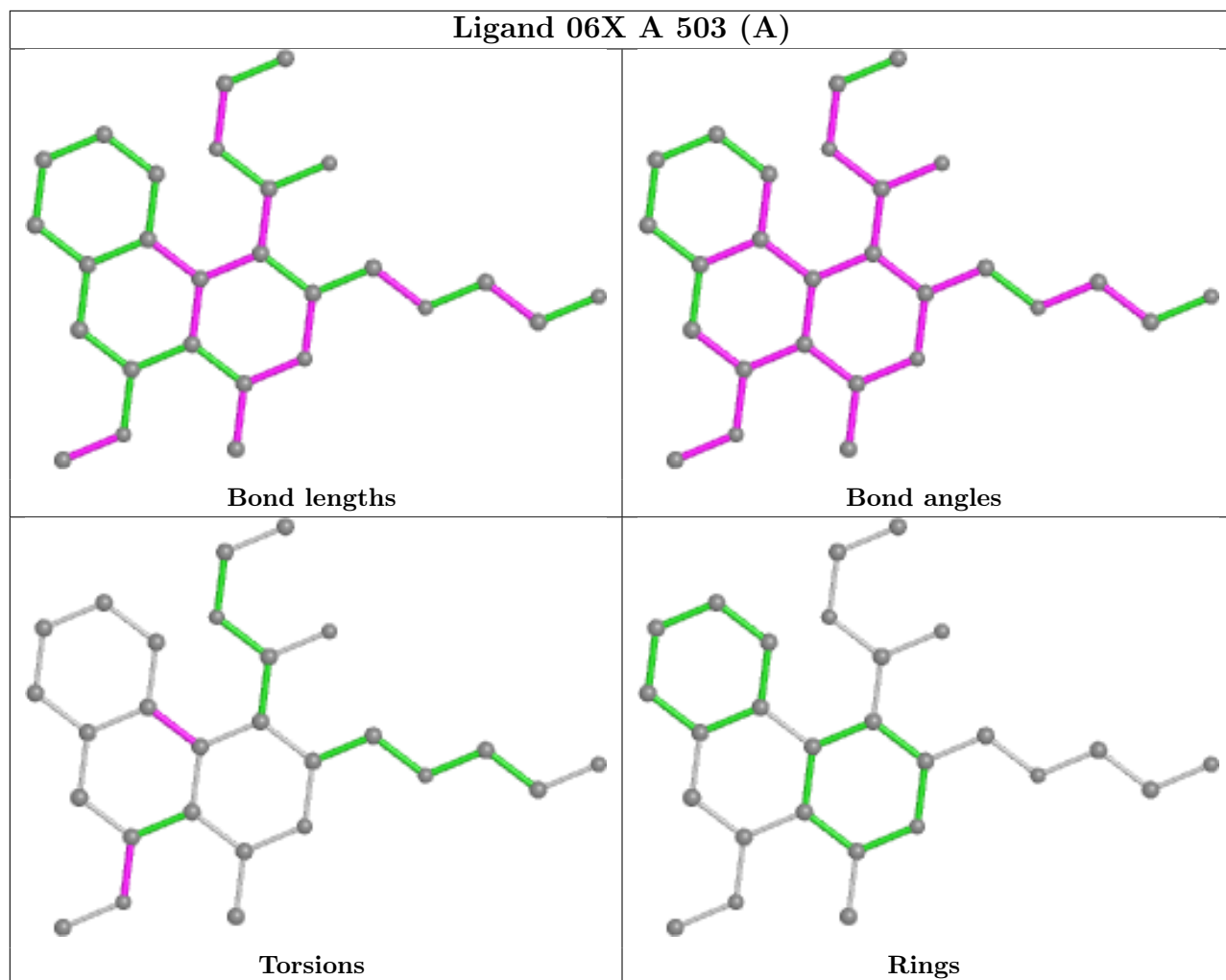
There are no ring outliers.

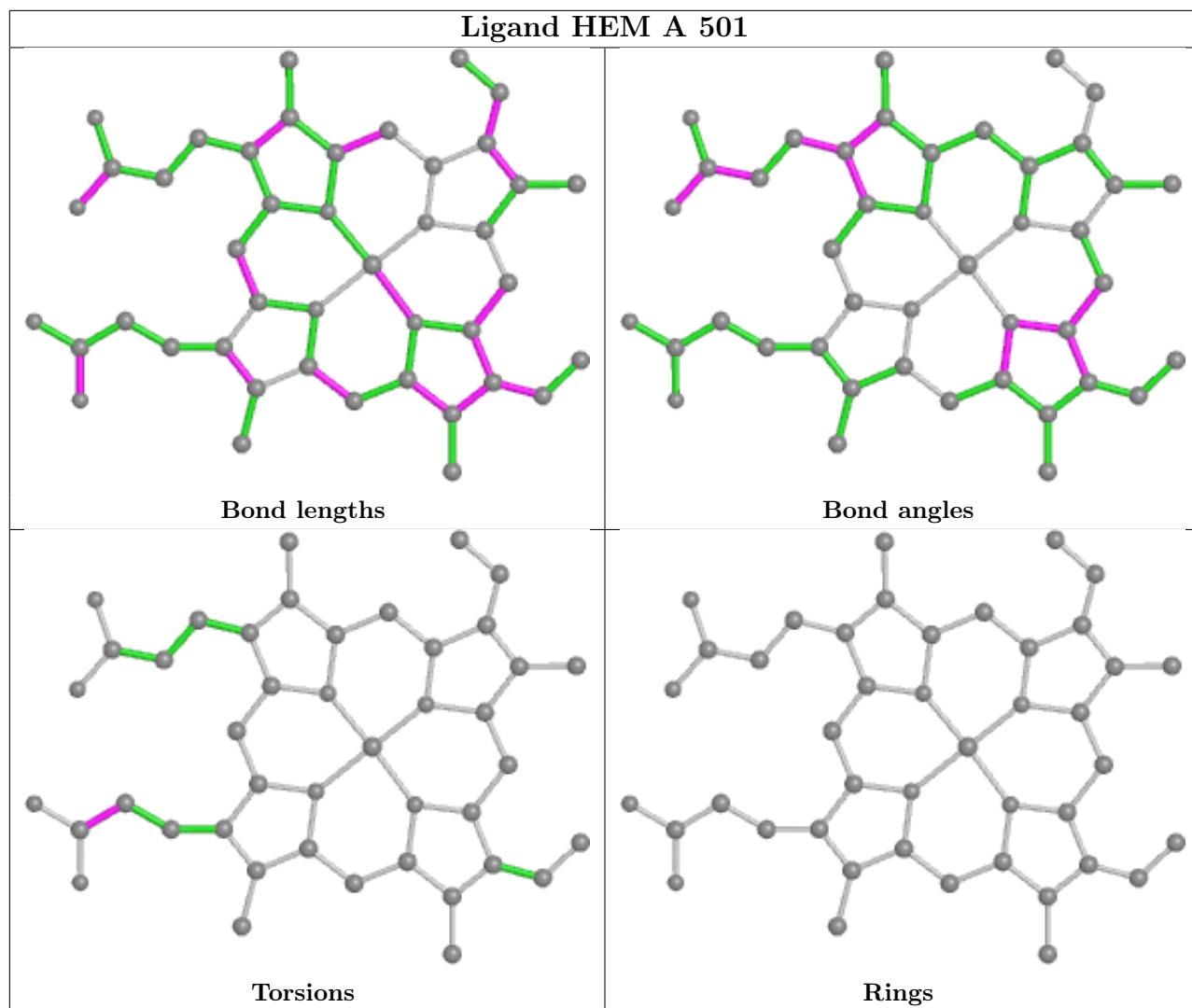
5 monomers are involved in 57 short contacts:

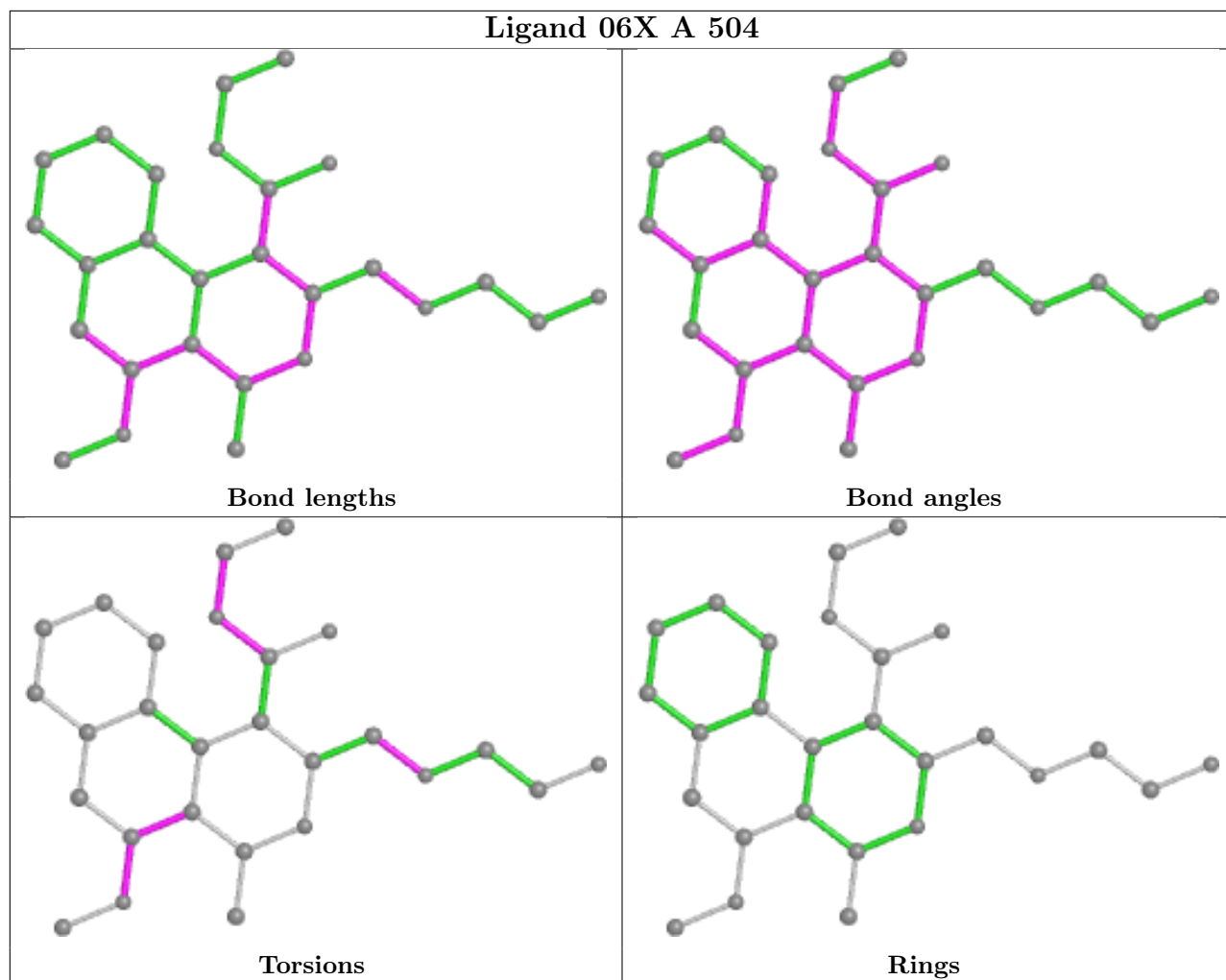
Mol	Chain	Res	Type	Clashes	Symm-Clashes
4	A	503[B]	06X	21	0
4	A	503[A]	06X	9	0
2	A	501	HEM	3	0
4	A	504	06X	18	0
3	A	502	CM5	6	0

The following is a two-dimensional graphical depiction of Mogul quality analysis of bond lengths, bond angles, torsion angles, and ring geometry for all instances of the Ligand of Interest. In addition, ligands with molecular weight > 250 and outliers as shown on the validation Tables will also be included. For torsion angles, if less than 5% of the Mogul distribution of torsion angles is within 10 degrees of the torsion angle in question, then that torsion angle is considered an outlier. Any bond that is central to one or more torsion angles identified as an outlier by Mogul will be highlighted in the graph. For rings, the root-mean-square deviation (RMSD) between the ring in question and similar rings identified by Mogul is calculated over all ring torsion angles. If the average RMSD is greater than 60 degrees and the minimal RMSD between the ring in question and any Mogul-identified rings is also greater than 60 degrees, then that ring is considered an outlier. The outliers are highlighted in purple. The color gray indicates Mogul did not find sufficient equivalents in the CSD to analyse the geometry.

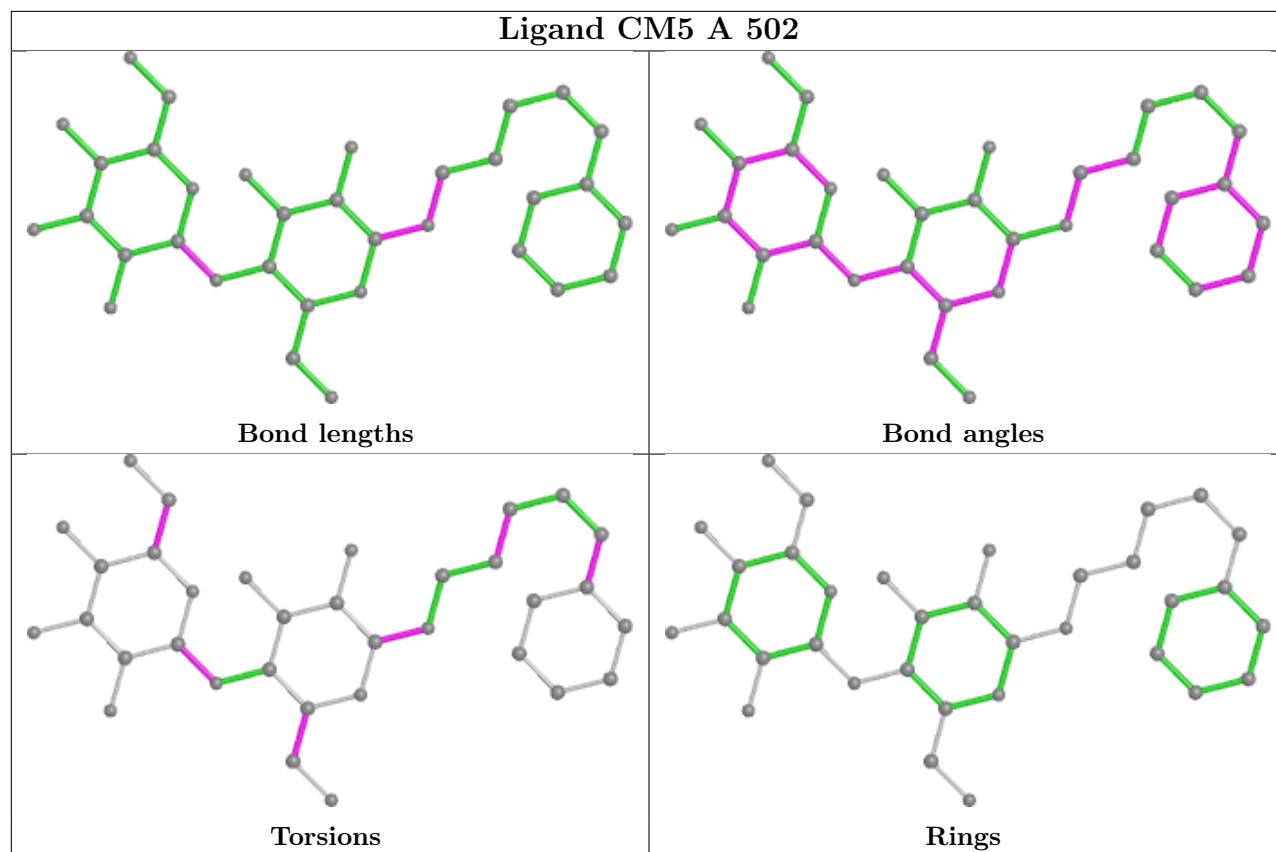












## 5.7 Other polymers [i](#)

There are no such residues in this entry.

## 5.8 Polymer linkage issues [i](#)

There are no chain breaks in this entry.

## 6 Fit of model and data

### 6.1 Protein, DNA and RNA chains

In the following table, the column labelled ‘#RSRZ> 2’ contains the number (and percentage) of RSRZ outliers, followed by percent RSRZ outliers for the chain as percentile scores relative to all X-ray entries and entries of similar resolution. The OWAB column contains the minimum, median, 95<sup>th</sup> percentile and maximum values of the occupancy-weighted average B-factor per residue. The column labelled ‘Q< 0.9’ lists the number of (and percentage) of residues with an average occupancy less than 0.9.

Mol	Chain	Analysed	<RSRZ>	#RSRZ>2	OWAB(Å <sup>2</sup> )	Q<0.9
1	A	463/476 (97%)	0.11	31 (6%) <b>17</b> <b>17</b>	24, 44, 77, 102	0

All (31) RSRZ outliers are listed below:

Mol	Chain	Res	Type	RSRZ
1	A	28	GLY	5.3
1	A	38	PRO	5.1
1	A	137	MET	4.9
1	A	133	ARG	4.8
1	A	335	HIS	4.5
1	A	135	PHE	4.4
1	A	492	HIS	4.1
1	A	44	LEU	4.0
1	A	226	TYR	3.9
1	A	279	PRO	3.8
1	A	473	ARG	3.6
1	A	140	ARG	3.4
1	A	227	PHE	3.4
1	A	46	MET	3.2
1	A	363	ILE	3.2
1	A	223	PHE	3.1
1	A	212	PHE	3.0
1	A	274	LYS	2.7
1	A	477	VAL	2.7
1	A	277	SER	2.6
1	A	303	THR	2.5
1	A	299	GLY	2.5
1	A	298	ALA	2.5
1	A	302	THR	2.4
1	A	446	LEU	2.4
1	A	367	VAL	2.2
1	A	62	TYR	2.2

*Continued on next page...*

*Continued from previous page...*

Mol	Chain	Res	Type	RSRZ
1	A	139	LYS	2.1
1	A	175	THR	2.1
1	A	297	PHE	2.1
1	A	60	GLU	2.0

## 6.2 Non-standard residues in protein, DNA, RNA chains [i](#)

There are no non-standard protein/DNA/RNA residues in this entry.

## 6.3 Carbohydrates [i](#)

There are no monosaccharides in this entry.

## 6.4 Ligands [i](#)

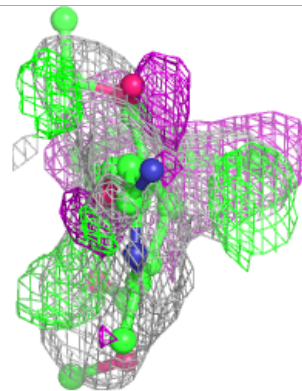
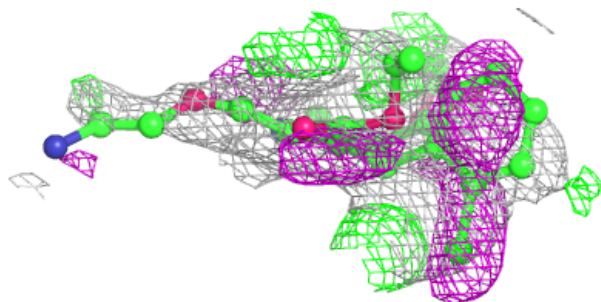
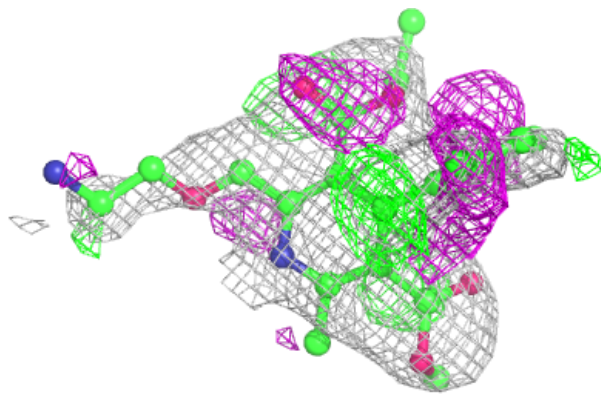
In the following table, the Atoms column lists the number of modelled atoms in the group and the number defined in the chemical component dictionary. The B-factors column lists the minimum, median, 95<sup>th</sup> percentile and maximum values of B factors of atoms in the group. The column labelled 'Q< 0.9' lists the number of atoms with occupancy less than 0.9.

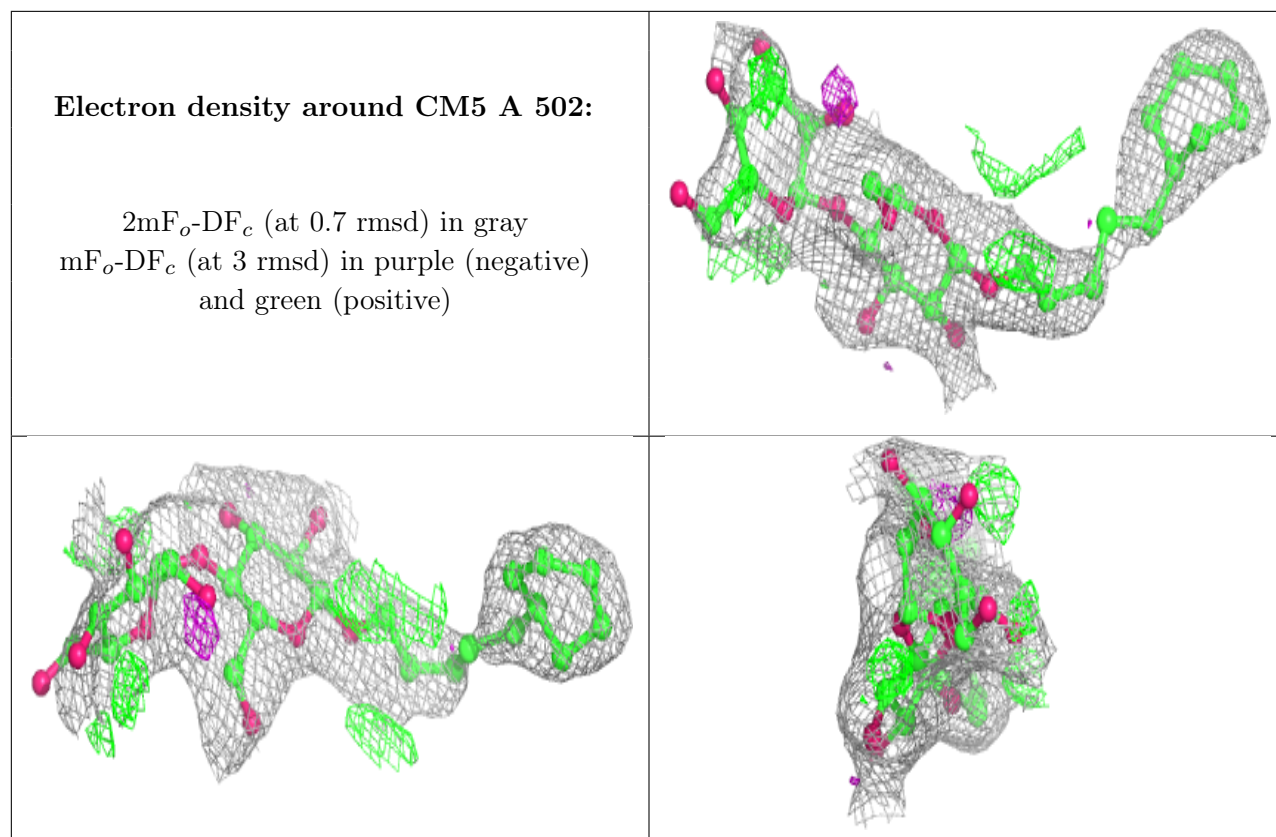
Mol	Type	Chain	Res	Atoms	RSCC	RSR	B-factors(Å <sup>2</sup> )	Q<0.9
4	06X	A	504	28/28	0.71	0.30	76,80,86,86	0
3	CM5	A	502	34/34	0.82	0.19	45,67,136,136	0
4	06X	A	503[B]	28/28	0.83	0.24	36,42,52,53	28
4	06X	A	503[A]	28/28	0.83	0.24	34,49,55,58	28
2	HEM	A	501	43/43	0.97	0.19	28,32,37,40	0

The following is a graphical depiction of the model fit to experimental electron density of all instances of the Ligand of Interest. In addition, ligands with molecular weight > 250 and outliers as shown on the geometry validation Tables will also be included. Each fit is shown from different orientation to approximate a three-dimensional view.

**Electron density around 06X A 504:**

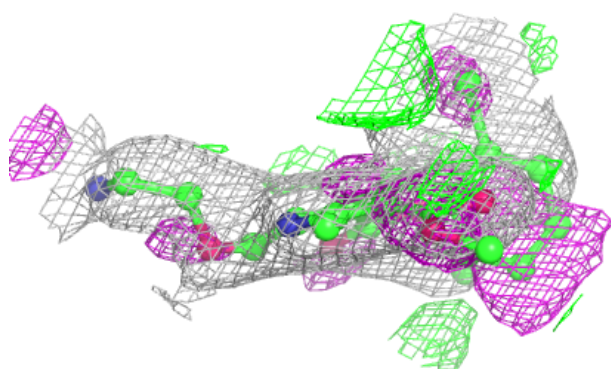
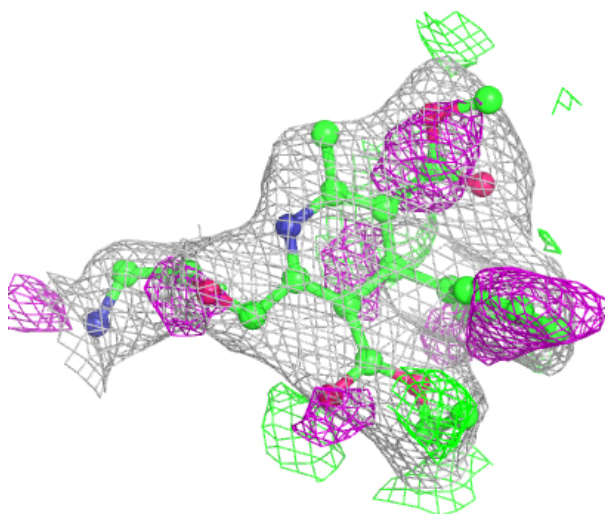
$2mF_o-DF_c$  (at 0.7 rmsd) in gray  
 $mF_o-DF_c$  (at 3 rmsd) in purple (negative)  
and green (positive)





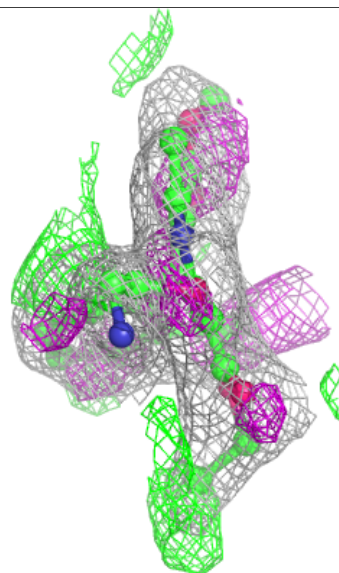
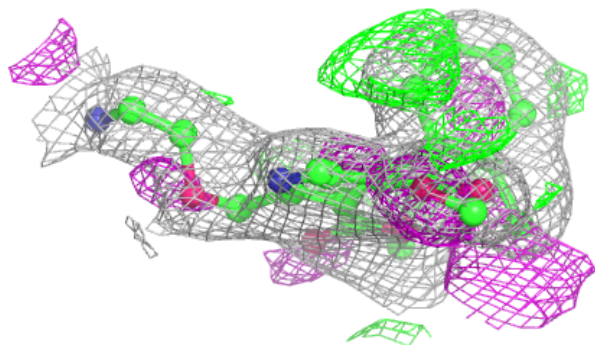
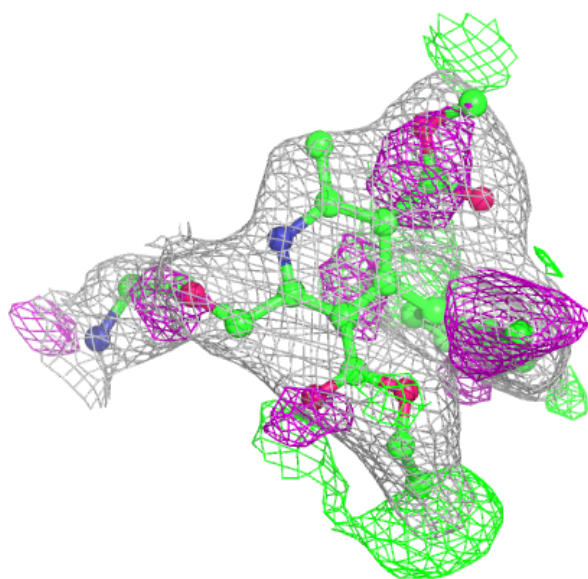
**Electron density around 06X A 503 (B):**

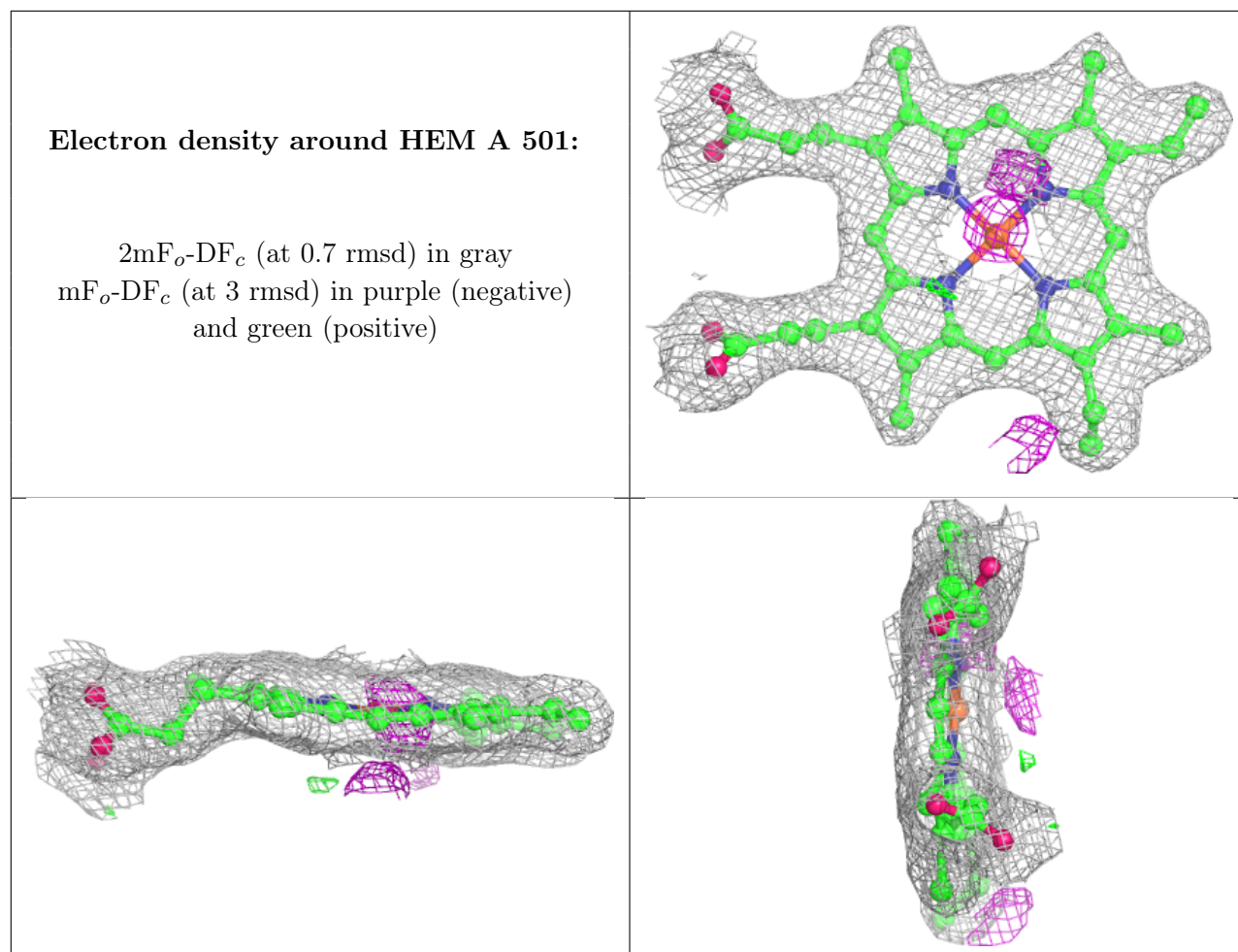
$2mF_o-DF_c$  (at 0.7 rmsd) in gray  
 $mF_o-DF_c$  (at 3 rmsd) in purple (negative)  
and green (positive)



**Electron density around 06X A 503 (A):**

$2mF_o-DF_c$  (at 0.7 rmsd) in gray  
 $mF_o-DF_c$  (at 3 rmsd) in purple (negative)  
and green (positive)





## 6.5 Other polymers [i](#)

There are no such residues in this entry.