



Full wwPDB X-ray Structure Validation Report ⓘ

Mar 4, 2024 – 07:29 AM EST

PDB ID : 1TMM
Title : Crystal structure of ternary complex of E.coli HPPK(W89A) with MGAM-PCPP and 6-Hydroxymethylpterin
Authors : Blaszczyk, J.; Li, Y.; Wu, Y.; Shi, G.; Ji, X.; Yan, H.
Deposited on : 2004-06-10
Resolution : 1.25 Å(reported)

This is a Full wwPDB X-ray Structure Validation Report for a publicly released PDB entry.

We welcome your comments at validation@mail.wwpdb.org

A user guide is available at

<https://www.wwpdb.org/validation/2017/XrayValidationReportHelp>

with specific help available everywhere you see the ⓘ symbol.

The types of validation reports are described at

<http://www.wwpdb.org/validation/2017/FAQs#types>.

The following versions of software and data (see [references ⓘ](#)) were used in the production of this report:

MolProbity : 4.02b-467
Mogul : 1.8.5 (274361), CSD as541be (2020)
Xtriage (Phenix) : 1.13
EDS : 2.36
buster-report : 1.1.7 (2018)
Percentile statistics : 20191225.v01 (using entries in the PDB archive December 25th 2019)
Refmac : 5.8.0158
CCP4 : 7.0.044 (Gargrove)
Ideal geometry (proteins) : Engh & Huber (2001)
Ideal geometry (DNA, RNA) : Parkinson et al. (1996)
Validation Pipeline (wwPDB-VP) : 2.36

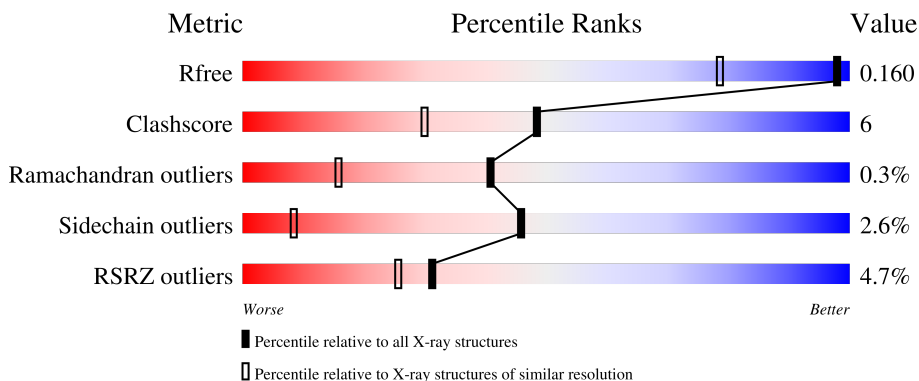
1 Overall quality at a glance

The following experimental techniques were used to determine the structure:

X-RAY DIFFRACTION


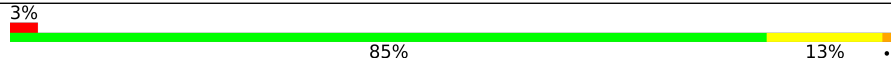
The reported resolution of this entry is 1.25 Å.

Percentile scores (ranging between 0-100) for global validation metrics of the entry are shown in the following graphic. The table shows the number of entries on which the scores are based.



Metric	Whole archive (#Entries)	Similar resolution (#Entries, resolution range(Å))
R_{free}	130704	1023 (1.28-1.24)
Clashscore	141614	1060 (1.28-1.24)
Ramachandran outliers	138981	1029 (1.28-1.24)
Sidechain outliers	138945	1028 (1.28-1.24)
RSRZ outliers	127900	1004 (1.28-1.24)

The table below summarises the geometric issues observed across the polymeric chains and their fit to the electron density. The red, orange, yellow and green segments of the lower bar indicate the fraction of residues that contain outliers for ≥ 3 , 2, 1 and 0 types of geometric quality criteria respectively. A grey segment represents the fraction of residues that are not modelled. The numeric value for each fraction is indicated below the corresponding segment, with a dot representing fractions $\leq 5\%$. The upper red bar (where present) indicates the fraction of residues that have poor fit to the electron density. The numeric value is given above the bar.

Mol	Chain	Length	Quality of chain
1	A	158	 6% 85% 11% .
1	B	158	 3% 85% 13% ..

The following table lists non-polymeric compounds, carbohydrate monomers and non-standard residues in protein, DNA, RNA chains that are outliers for geometric or electron-density-fit criteria:

Mol	Type	Chain	Res	Chirality	Geometry	Clashes	Electron density
6	HHR	A	181	-	X	-	-
6	HHR	B	381	-	X	-	-
7	GOL	A	170	-	X	X	-
7	GOL	B	369	-	X	-	-

2 Entry composition [i](#)

There are 8 unique types of molecules in this entry. The entry contains 3337 atoms, of which 0 are hydrogens and 0 are deuteriums.

In the tables below, the ZeroOcc column contains the number of atoms modelled with zero occupancy, the AltConf column contains the number of residues with at least one atom in alternate conformation and the Trace column contains the number of residues modelled with at most 2 atoms.

- Molecule 1 is a protein called 2-amino-4-hydroxy-6-hydroxymethyldihydropteridine pyrophosphokinase.

Mol	Chain	Residues	Atoms					ZeroOcc	AltConf	Trace
			Total	C	N	O	S			
1	A	158	1283	817	226	236	4	0	7	0
1	B	158	1274	810	224	236	4	0	5	0

There are 2 discrepancies between the modelled and reference sequences:

Chain	Residue	Modelled	Actual	Comment	Reference
A	89	ALA	TRP	engineered mutation	UNP P26281
B	289	ALA	TRP	engineered mutation	UNP P26281

- Molecule 2 is MAGNESIUM ION (three-letter code: MG) (formula: Mg).

Mol	Chain	Residues	Atoms		ZeroOcc	AltConf
			Total	Mg		
2	A	3	3	3	0	0
2	B	2	2	2	0	0

- Molecule 3 is CHLORIDE ION (three-letter code: CL) (formula: Cl).

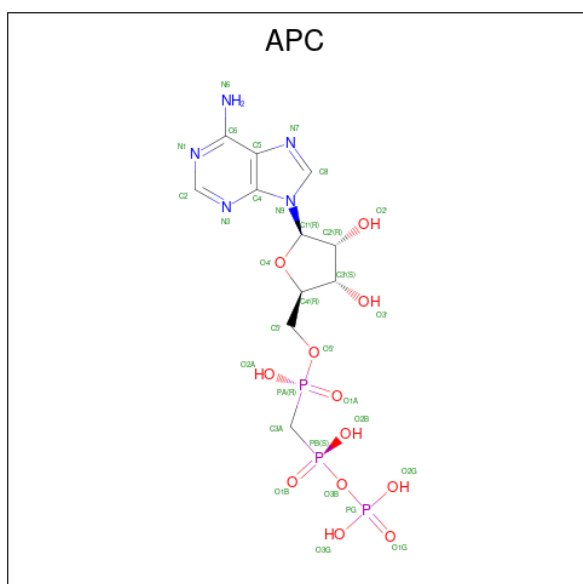
Mol	Chain	Residues	Atoms		ZeroOcc	AltConf
			Total	Cl		
3	A	2	2	2	0	0
3	B	1	1	1	0	0

- Molecule 4 is ACETATE ION (three-letter code: ACT) (formula: C₂H₃O₂).



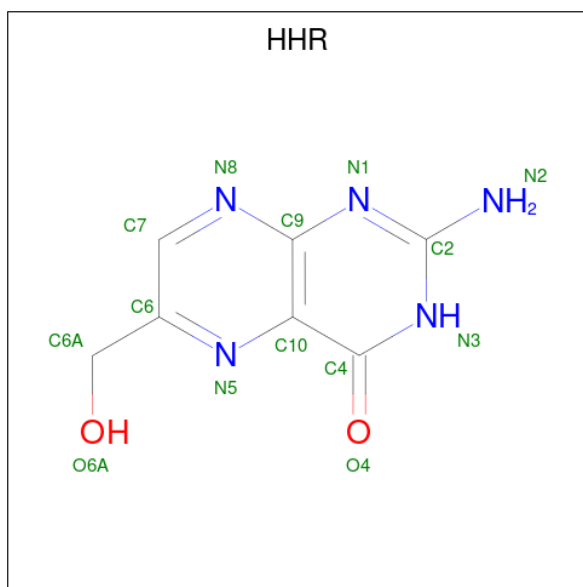
Mol	Chain	Residues	Atoms	ZeroOcc	AltConf
4	A	1	Total C O 4 2 2	0	0
4	A	1	Total C O 4 2 2	0	0
4	A	1	Total C O 4 2 2	0	0
4	B	1	Total C O 4 2 2	0	0

- Molecule 5 is DIPHOSPHOMETHYLPHOSPHONIC ACID ADENOSYL ESTER (three-letter code: APC) (formula: $C_{11}H_{18}N_5O_{12}P_3$).



Mol	Chain	Residues	Atoms					ZeroOcc	AltConf
			Total	C	N	O	P		
5	A	1	31	11	5	12	3	0	0
5	B	1	31	11	5	12	3	0	0

- Molecule 6 is 6-HYDROXYMETHYLPTERIN (three-letter code: HHR) (formula: C₇H₇N₅O₂).



Mol	Chain	Residues	Atoms				ZeroOcc	AltConf
			Total	C	N	O		
6	A	1	14	7	5	2	0	0
6	B	1	14	7	5	2	0	0

- Molecule 7 is GLYCEROL (three-letter code: GOL) (formula: C₃H₈O₃).



Mol	Chain	Residues	Atoms	ZeroOcc	AltConf
7	A	1	Total C O 6 3 3	0	0
7	B	1	Total C O 6 3 3	0	0

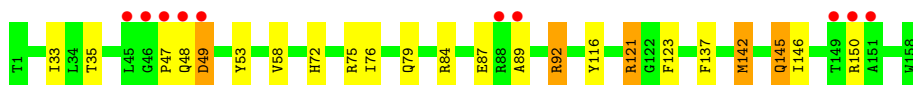
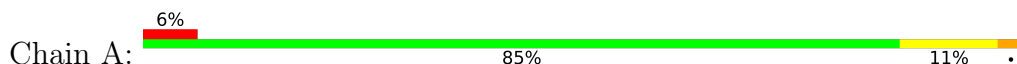
- Molecule 8 is water.

Mol	Chain	Residues	Atoms	ZeroOcc	AltConf
8	A	331	Total O 332 332	0	1
8	B	321	Total O 322 322	0	1

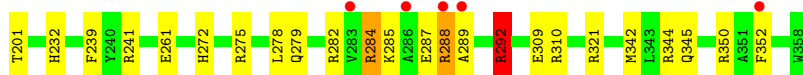
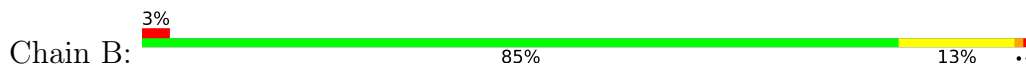
3 Residue-property plots [i](#)

These plots are drawn for all protein, RNA, DNA and oligosaccharide chains in the entry. The first graphic for a chain summarises the proportions of the various outlier classes displayed in the second graphic. The second graphic shows the sequence view annotated by issues in geometry and electron density. Residues are color-coded according to the number of geometric quality criteria for which they contain at least one outlier: green = 0, yellow = 1, orange = 2 and red = 3 or more. A red dot above a residue indicates a poor fit to the electron density ($RSRZ > 2$). Stretches of 2 or more consecutive residues without any outlier are shown as a green connector. Residues present in the sample, but not in the model, are shown in grey.

- Molecule 1: 2-amino-4-hydroxy-6-hydroxymethyldihydropteridine pyrophosphokinase



- Molecule 1: 2-amino-4-hydroxy-6-hydroxymethyldihydropteridine pyrophosphokinase



4 Data and refinement statistics

Property	Value	Source
Space group	P 1 21 1	Depositor
Cell constants a, b, c, α , β , γ	47.99Å 47.39Å 71.44Å 90.00° 104.13° 90.00°	Depositor
Resolution (Å)	30.00 – 1.25 26.38 – 1.25	Depositor EDS
% Data completeness (in resolution range)	95.0 (30.00-1.25) 95.5 (26.38-1.25)	Depositor EDS
R_{merge}	0.08	Depositor
R_{sym}	(Not available)	Depositor
$\langle I/\sigma(I) \rangle$ ¹	2.04 (at 1.25Å)	Xtrriage
Refinement program	SHELXL-97	Depositor
R, R_{free}	0.132 , 0.164 0.129 , 0.160	Depositor DCC
R_{free} test set	3698 reflections (4.30%)	wwPDB-VP
Wilson B-factor (Å ²)	9.4	Xtrriage
Anisotropy	0.168	Xtrriage
Bulk solvent k_{sol} (e/Å ³), B_{sol} (Å ²)	0.27 , 56.1	EDS
L-test for twinning ²	$\langle L \rangle = 0.48$, $\langle L^2 \rangle = 0.31$	Xtrriage
Estimated twinning fraction	No twinning to report.	Xtrriage
F_o, F_c correlation	0.98	EDS
Total number of atoms	3337	wwPDB-VP
Average B, all atoms (Å ²)	20.0	wwPDB-VP

Xtrriage's analysis on translational NCS is as follows: *The analyses of the Patterson function reveals a significant off-origin peak that is 28.86 % of the origin peak, indicating pseudo-translational symmetry. The chance of finding a peak of this or larger height randomly in a structure without pseudo-translational symmetry is equal to 1.7123e-03. The detected translational NCS is most likely also responsible for the elevated intensity ratio.*

¹Intensities estimated from amplitudes.

²Theoretical values of $\langle |L| \rangle$, $\langle L^2 \rangle$ for acentric reflections are 0.5, 0.333 respectively for untwinned datasets, and 0.375, 0.2 for perfectly twinned datasets.

5 Model quality i

5.1 Standard geometry i

Bond lengths and bond angles in the following residue types are not validated in this section: ACT, GOL, APC, HHR, CL, MG

The Z score for a bond length (or angle) is the number of standard deviations the observed value is removed from the expected value. A bond length (or angle) with $|Z| > 5$ is considered an outlier worth inspection. RMSZ is the root-mean-square of all Z scores of the bond lengths (or angles).

Mol	Chain	Bond lengths		Bond angles	
		RMSZ	# Z >5	RMSZ	# Z >5
1	A	0.61	0/1347	1.31	9/1832 (0.5%)
1	B	0.63	0/1332	1.37	15/1810 (0.8%)
All	All	0.62	0/2679	1.34	24/3642 (0.7%)

There are no bond length outliers.

All (24) bond angle outliers are listed below:

Mol	Chain	Res	Type	Atoms	Z	Observed(°)	Ideal(°)
1	B	275	ARG	NE-CZ-NH2	24.09	132.35	120.30
1	A	75	ARG	NE-CZ-NH2	15.80	128.20	120.30
1	A	92	ARG	NE-CZ-NH2	-11.58	114.51	120.30
1	B	321	ARG	NE-CZ-NH1	10.46	125.53	120.30
1	A	92	ARG	NE-CZ-NH1	9.38	124.99	120.30
1	B	275	ARG	CD-NE-CZ	9.32	136.65	123.60
1	A	53	TYR	CB-CG-CD2	-9.27	115.44	121.00
1	B	275	ARG	NE-CZ-NH1	-8.77	115.92	120.30
1	B	292	ARG	NE-CZ-NH2	7.46	124.03	120.30
1	B	344	ARG	NE-CZ-NH1	7.27	123.94	120.30
1	B	275	ARG	NH1-CZ-NH2	-6.97	111.74	119.40
1	A	75	ARG	NE-CZ-NH1	-6.62	116.99	120.30
1	A	121	ARG	NE-CZ-NH2	6.59	123.59	120.30
1	B	284	ARG	NE-CZ-NH2	6.43	123.52	120.30
1	A	89	ALA	C-N-CA	5.56	133.97	122.30
1	B	310	ARG	NE-CZ-NH2	-5.55	117.52	120.30
1	B	241	ARG	NE-CZ-NH2	-5.29	117.66	120.30
1	B	310	ARG	NE-CZ-NH1	5.17	122.89	120.30
1	B	282	ARG	NE-CZ-NH1	5.14	122.87	120.30
1	B	288[A]	ARG	NE-CZ-NH1	5.10	122.85	120.30
1	B	288[B]	ARG	NE-CZ-NH1	5.10	122.85	120.30
1	B	239	PHE	CB-CG-CD1	5.02	124.31	120.80

Continued on next page...

Continued from previous page...

Mol	Chain	Res	Type	Atoms	Z	Observed(°)	Ideal(°)
1	A	53	TYR	CB-CG-CD1	5.01	124.00	121.00
1	A	145	GLN	CA-CB-CG	5.00	124.41	113.40

There are no chirality outliers.

There are no planarity outliers.

5.2 Too-close contacts [i](#)

In the following table, the Non-H and H(model) columns list the number of non-hydrogen atoms and hydrogen atoms in the chain respectively. The H(added) column lists the number of hydrogen atoms added and optimized by MolProbity. The Clashes column lists the number of clashes within the asymmetric unit, whereas Symm-Clashes lists symmetry-related clashes.

Mol	Chain	Non-H	H(model)	H(added)	Clashes	Symm-Clashes
1	A	1283	0	1296	15	0
1	B	1274	0	1273	15	0
2	A	3	0	0	0	0
2	B	2	0	0	0	0
3	A	2	0	0	0	0
3	B	1	0	0	0	0
4	A	12	0	9	0	0
4	B	4	0	3	1	0
5	A	31	0	14	0	0
5	B	31	0	14	0	0
6	A	14	0	6	0	0
6	B	14	0	6	0	0
7	A	6	0	6	4	0
7	B	6	0	6	1	0
8	A	332	0	0	3	0
8	B	322	0	0	10	0
All	All	3337	0	2633	32	0

The all-atom clashscore is defined as the number of clashes found per 1000 atoms (including hydrogen atoms). The all-atom clashscore for this structure is 6.

All (32) close contacts within the same asymmetric unit are listed below, sorted by their clash magnitude.

Atom-1	Atom-2	Interatomic distance (Å)	Clash overlap (Å)
1:A:116:TYR:HA	7:A:170:GOL:H31	1.65	0.79
1:B:278:LEU:HD11	7:B:369:GOL:H2	1.65	0.78

Continued on next page...

Continued from previous page...

Atom-1	Atom-2	Interatomic distance (Å)	Clash overlap (Å)
1:B:279[B]:GLN:HG3	8:B:614:HOH:O	1.84	0.77
4:B:365:ACT:H1	8:B:603:HOH:O	1.98	0.62
7:A:170:GOL:H32	8:A:409:HOH:O	2.00	0.61
1:B:261:GLU:HG2	8:B:877:HOH:O	1.99	0.61
1:B:278:LEU:HD12	8:B:804:HOH:O	2.01	0.60
1:B:272:HIS:HE1	8:B:809:HOH:O	1.84	0.60
1:B:232:HIS:HD2	8:B:691:HOH:O	1.86	0.59
1:A:142:MET:HG2	8:A:463:HOH:O	2.03	0.58
1:A:116:TYR:CA	7:A:170:GOL:H31	2.35	0.56
1:A:72:HIS:HE1	8:B:653:HOH:O	1.87	0.56
1:B:284:ARG:HG2	1:B:287:GLU:OE2	2.07	0.54
1:A:116:TYR:O	7:A:170:GOL:H11	2.07	0.54
1:A:47:PRO:HB2	1:A:49:ASP:OD1	2.09	0.52
1:B:284:ARG:HA	8:B:840:HOH:O	2.10	0.51
1:A:35:THR:O	1:A:58[B]:VAL:HG23	2.12	0.49
1:B:342:MET:HB2	1:B:345[B]:GLN:HG3	1.95	0.48
1:B:350:ARG:HB2	1:B:352:PHE:CE2	2.49	0.48
1:A:35:THR:O	1:A:58[A]:VAL:HG13	2.14	0.47
1:B:289:ALA:HA	8:B:622:HOH:O	2.14	0.47
1:A:33:ILE:HG23	1:A:58[A]:VAL:CG1	2.46	0.46
1:A:150[A]:ARG:NH2	8:A:949:HOH:O	2.48	0.46
1:B:292:ARG:NH1	8:B:499:HOH:O	2.48	0.45
1:B:201:THR:N	1:B:261:GLU:OE2	2.50	0.45
1:A:137:PHE:CE1	1:A:146:ILE:HD12	2.52	0.43
1:A:33:ILE:HG23	1:A:58[B]:VAL:CG2	2.48	0.43
1:B:342:MET:HB2	1:B:345[B]:GLN:CG	2.48	0.43
1:A:76:ILE:O	1:A:79[B]:GLN:HG2	2.19	0.42
1:A:84:ARG:NH1	1:A:87:GLU:OE1	2.53	0.41
1:A:121:ARG:HD3	1:A:123:PHE:CZ	2.55	0.41

There are no symmetry-related clashes.

5.3 Torsion angles [i](#)

5.3.1 Protein backbone [i](#)

In the following table, the Percentiles column shows the percent Ramachandran outliers of the chain as a percentile score with respect to all X-ray entries followed by that with respect to entries of similar resolution.

The Analysed column shows the number of residues for which the backbone conformation was analysed, and the total number of residues.

Mol	Chain	Analysed	Favoured	Allowed	Outliers	Percentiles	
1	A	163/158 (103%)	156 (96%)	6 (4%)	1 (1%)	25	5
1	B	161/158 (102%)	158 (98%)	3 (2%)	0	100	100
All	All	324/316 (102%)	314 (97%)	9 (3%)	1 (0%)	41	16

All (1) Ramachandran outliers are listed below:

Mol	Chain	Res	Type
1	A	49	ASP

5.3.2 Protein sidechains [i](#)

In the following table, the Percentiles column shows the percent sidechain outliers of the chain as a percentile score with respect to all X-ray entries followed by that with respect to entries of similar resolution.

The Analysed column shows the number of residues for which the sidechain conformation was analysed, and the total number of residues.

Mol	Chain	Analysed	Rotameric	Outliers	Percentiles	
1	A	143/136 (105%)	139 (97%)	4 (3%)	43	7
1	B	141/136 (104%)	137 (97%)	4 (3%)	43	7
All	All	284/272 (104%)	276 (97%)	8 (3%)	46	7

All (8) residues with a non-rotameric sidechain are listed below:

Mol	Chain	Res	Type
1	A	48	GLN
1	A	92	ARG
1	A	142	MET
1	A	145	GLN
1	B	288[A]	ARG
1	B	288[B]	ARG
1	B	292	ARG
1	B	309	GLU

Sometimes sidechains can be flipped to improve hydrogen bonding and reduce clashes. All (5) such sidechains are listed below:

Mol	Chain	Res	Type
1	A	72	HIS
1	A	145	GLN

Continued on next page...

Continued from previous page...

Mol	Chain	Res	Type
1	A	156	ASN
1	B	232	HIS
1	B	272	HIS

5.3.3 RNA [i](#)

There are no RNA molecules in this entry.

5.4 Non-standard residues in protein, DNA, RNA chains [i](#)

There are no non-standard protein/DNA/RNA residues in this entry.

5.5 Carbohydrates [i](#)

There are no monosaccharides in this entry.

5.6 Ligand geometry [i](#)

Of 18 ligands modelled in this entry, 8 are monoatomic - leaving 10 for Mogul analysis.

In the following table, the Counts columns list the number of bonds (or angles) for which Mogul statistics could be retrieved, the number of bonds (or angles) that are observed in the model and the number of bonds (or angles) that are defined in the Chemical Component Dictionary. The Link column lists molecule types, if any, to which the group is linked. The Z score for a bond length (or angle) is the number of standard deviations the observed value is removed from the expected value. A bond length (or angle) with $|Z| > 2$ is considered an outlier worth inspection. RMSZ is the root-mean-square of all Z scores of the bond lengths (or angles).

Mol	Type	Chain	Res	Link	Bond lengths			Bond angles		
					Counts	RMSZ	# Z > 2	Counts	RMSZ	# Z > 2
6	HHR	A	181	2	15,15,15	2.75	7 (46%)	18,21,21	5.22	12 (66%)
4	ACT	A	167	-	3,3,3	1.19	0	3,3,3	1.08	0
5	APC	A	171	2	27,33,33	1.95	8 (29%)	31,52,52	1.45	5 (16%)
6	HHR	B	381	2	15,15,15	2.99	8 (53%)	18,21,21	6.30	12 (66%)
7	GOL	A	170	-	5,5,5	2.11	3 (60%)	5,5,5	0.55	0
4	ACT	A	166	-	3,3,3	0.77	0	3,3,3	1.74	1 (33%)
4	ACT	A	168	-	3,3,3	1.33	0	3,3,3	1.62	1 (33%)
4	ACT	B	365	-	3,3,3	1.26	0	3,3,3	2.39	2 (66%)
5	APC	B	371	2	27,33,33	2.23	9 (33%)	31,52,52	1.50	7 (22%)

Mol	Type	Chain	Res	Link	Bond lengths			Bond angles		
					Counts	RMSZ	# Z > 2	Counts	RMSZ	# Z > 2
7	GOL	B	369	-	5,5,5	1.94	3 (60%)	5,5,5	1.13	0

In the following table, the Chirals column lists the number of chiral outliers, the number of chiral centers analysed, the number of these observed in the model and the number defined in the Chemical Component Dictionary. Similar counts are reported in the Torsion and Rings columns. '-' means no outliers of that kind were identified.

Mol	Type	Chain	Res	Link	Chirals	Torsions	Rings
6	HHR	A	181	2	-	2/2/2/2	0/2/2/2
7	GOL	A	170	-	-	4/4/4/4	-
5	APC	A	171	2	-	0/15/38/38	0/3/3/3
6	HHR	B	381	2	-	2/2/2/2	0/2/2/2
5	APC	B	371	2	-	0/15/38/38	0/3/3/3
7	GOL	B	369	-	-	4/4/4/4	-

All (38) bond length outliers are listed below:

Mol	Chain	Res	Type	Atoms	Z	Observed(Å)	Ideal(Å)
6	B	381	HHR	C2-N3	6.75	1.47	1.35
6	A	181	HHR	C2-N3	6.11	1.46	1.35
6	B	381	HHR	C10-C9	5.18	1.50	1.40
5	B	371	APC	PB-O2B	-5.00	1.44	1.56
5	B	371	APC	C2-N3	4.74	1.39	1.32
6	A	181	HHR	C2-N2	-4.38	1.25	1.33
5	A	171	APC	C5'-C4'	4.34	1.65	1.51
5	B	371	APC	PA-O2A	-4.32	1.46	1.56
6	B	381	HHR	C7-C6	4.18	1.46	1.39
6	A	181	HHR	C10-C9	3.97	1.48	1.40
6	B	381	HHR	C2-N2	-3.83	1.26	1.33
5	A	171	APC	O4'-C1'	3.59	1.46	1.41
5	A	171	APC	PB-O3B	3.55	1.62	1.58
5	B	371	APC	O4'-C1'	3.52	1.46	1.41
5	A	171	APC	PB-O2B	-3.44	1.48	1.56
6	A	181	HHR	C7-C6	3.32	1.45	1.39
5	B	371	APC	C2-N1	3.31	1.40	1.33
5	B	371	APC	PB-O3B	2.97	1.61	1.58
7	A	170	GOL	O2-C2	2.91	1.52	1.43
7	A	170	GOL	O3-C3	-2.90	1.30	1.42
5	A	171	APC	O2'-C2'	2.88	1.49	1.43
6	A	181	HHR	C9-N8	-2.81	1.33	1.37
5	B	371	APC	C2'-C1'	-2.80	1.49	1.53

Continued on next page...

Continued from previous page...

Mol	Chain	Res	Type	Atoms	Z	Observed(Å)	Ideal(Å)
5	B	371	APC	O2'-C2'	2.80	1.49	1.43
5	A	171	APC	PA-O2A	-2.76	1.49	1.56
5	B	371	APC	C6-N6	2.62	1.43	1.34
6	A	181	HHR	C10-C4	-2.50	1.37	1.41
7	B	369	GOL	O2-C2	2.46	1.50	1.43
7	B	369	GOL	O1-C1	-2.43	1.32	1.42
5	A	171	APC	C5-C4	-2.42	1.34	1.40
6	B	381	HHR	C9-N8	-2.41	1.33	1.37
7	B	369	GOL	O3-C3	-2.40	1.32	1.42
7	A	170	GOL	O1-C1	-2.27	1.32	1.42
6	B	381	HHR	C10-N5	2.23	1.36	1.33
5	A	171	APC	C3'-C4'	-2.21	1.47	1.53
6	B	381	HHR	C4-N3	2.20	1.36	1.33
6	B	381	HHR	C9-N1	-2.16	1.32	1.36
6	A	181	HHR	C4-N3	2.09	1.36	1.33

All (40) bond angle outliers are listed below:

Mol	Chain	Res	Type	Atoms	Z	Observed(°)	Ideal(°)
6	B	381	HHR	C7-N8-C9	11.40	128.15	116.69
6	B	381	HHR	N8-C9-N1	11.20	128.60	115.82
6	B	381	HHR	C2-N1-C9	10.37	127.20	115.36
6	B	381	HHR	N1-C2-N3	-9.85	114.08	127.22
6	A	181	HHR	N1-C2-N3	-9.01	115.20	127.22
6	A	181	HHR	C7-N8-C9	8.98	125.71	116.69
6	A	181	HHR	C2-N1-C9	8.58	125.16	115.36
6	B	381	HHR	C9-C10-C4	-8.44	114.36	119.95
6	B	381	HHR	C6A-C6-N5	7.57	124.27	115.38
6	B	381	HHR	N2-C2-N1	7.57	130.12	117.79
6	A	181	HHR	N8-C9-N1	7.53	124.42	115.82
6	A	181	HHR	N2-C2-N1	7.34	129.76	117.79
6	A	181	HHR	C9-C10-C4	-6.64	115.55	119.95
6	A	181	HHR	C6A-C6-N5	5.30	121.61	115.38
6	A	181	HHR	C2-N3-C4	4.57	123.18	115.93
6	B	381	HHR	C2-N3-C4	4.30	122.77	115.93
5	A	171	APC	C5-C6-N6	4.29	126.88	120.35
6	A	181	HHR	C6-C7-N8	-4.17	119.05	123.13
6	B	381	HHR	C6-C7-N8	-4.14	119.07	123.13
6	A	181	HHR	C4-C10-N5	3.86	123.01	118.60
6	B	381	HHR	C7-C6-N5	-3.28	118.70	120.85
4	B	365	ACT	O-C-CH3	-3.13	110.15	122.33
5	B	371	APC	O4'-C4'-C3'	-3.08	99.02	105.11

Continued on next page...

Continued from previous page...

Mol	Chain	Res	Type	Atoms	Z	Observed(°)	Ideal(°)
5	B	371	APC	O2B-PB-O1B	3.00	120.10	110.07
6	B	381	HHR	C4-C10-N5	2.96	121.98	118.60
5	B	371	APC	N3-C2-N1	-2.87	124.19	128.68
6	B	381	HHR	C6A-C6-C7	-2.72	117.02	121.13
5	B	371	APC	C1'-N9-C4	2.68	131.36	126.64
5	A	171	APC	C5-C6-N1	-2.64	114.37	120.35
6	A	181	HHR	C10-C4-N3	-2.61	119.86	123.43
4	B	365	ACT	OXT-C-O	2.60	131.64	122.05
4	A	166	ACT	OXT-C-O	2.52	131.35	122.05
5	B	371	APC	C5-C6-N6	2.51	124.17	120.35
6	A	181	HHR	C7-C6-N5	-2.40	119.28	120.85
5	B	371	APC	O4'-C1'-C2'	-2.36	103.47	106.93
5	A	171	APC	O2B-PB-O1B	2.32	117.81	110.07
5	A	171	APC	C4-C5-N7	2.28	111.78	109.40
4	A	168	ACT	O-C-CH3	-2.23	113.64	122.33
5	B	371	APC	O2A-PA-O1A	2.15	117.26	110.07
5	A	171	APC	O2A-PA-O1A	2.09	117.05	110.07

There are no chirality outliers.

All (12) torsion outliers are listed below:

Mol	Chain	Res	Type	Atoms
7	A	170	GOL	C1-C2-C3-O3
7	B	369	GOL	O2-C2-C3-O3
7	A	170	GOL	O1-C1-C2-C3
7	B	369	GOL	O1-C1-C2-C3
7	B	369	GOL	C1-C2-C3-O3
7	A	170	GOL	O2-C2-C3-O3
6	B	381	HHR	N5-C6-C6A-O6A
7	B	369	GOL	O1-C1-C2-O2
6	B	381	HHR	C7-C6-C6A-O6A
7	A	170	GOL	O1-C1-C2-O2
6	A	181	HHR	C7-C6-C6A-O6A
6	A	181	HHR	N5-C6-C6A-O6A

There are no ring outliers.

3 monomers are involved in 6 short contacts:

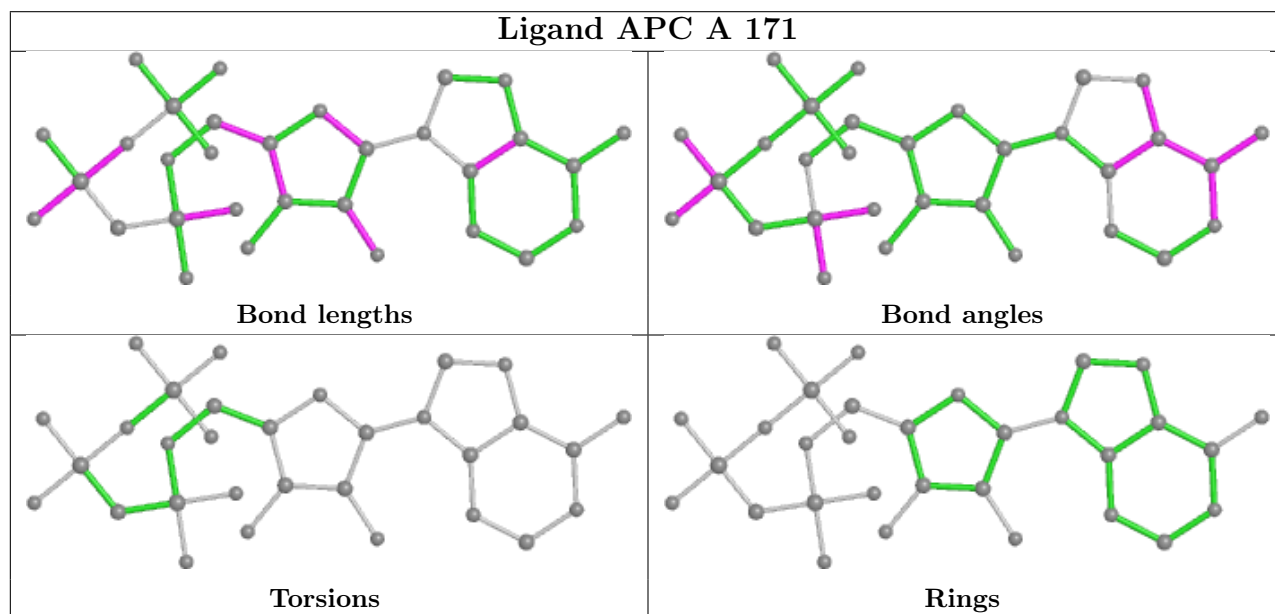
Mol	Chain	Res	Type	Clashes	Symm-Clashes
7	A	170	GOL	4	0
4	B	365	ACT	1	0

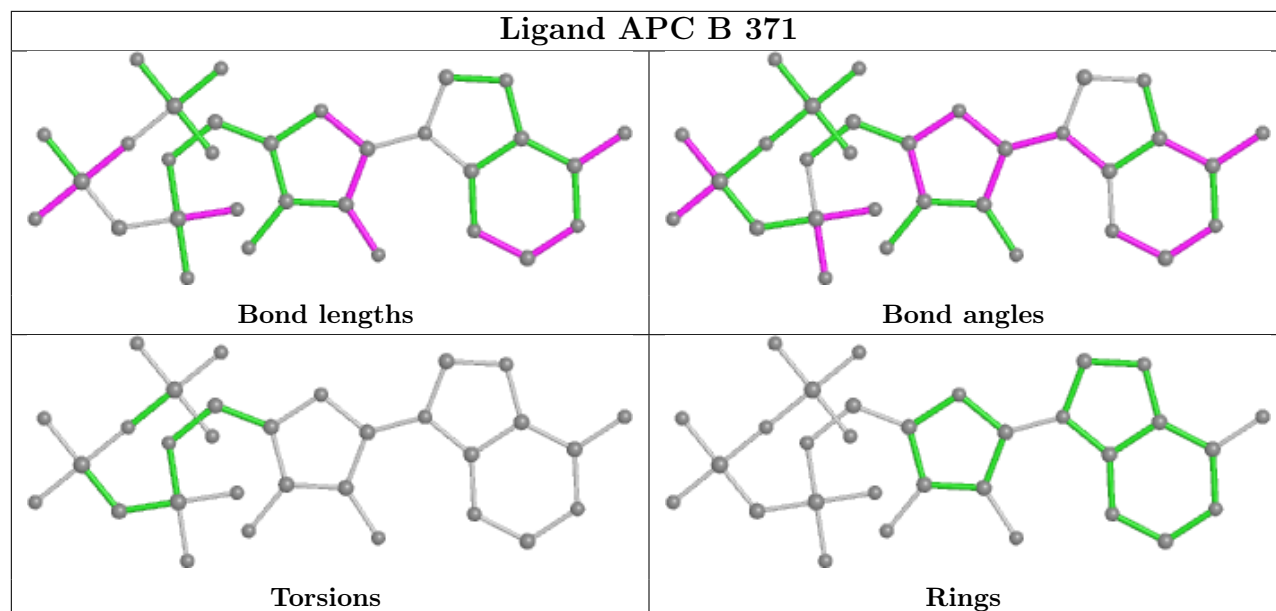
Continued on next page...

Continued from previous page...

Mol	Chain	Res	Type	Clashes	Symm-Clashes
7	B	369	GOL	1	0

The following is a two-dimensional graphical depiction of Mogul quality analysis of bond lengths, bond angles, torsion angles, and ring geometry for all instances of the Ligand of Interest. In addition, ligands with molecular weight > 250 and outliers as shown on the validation Tables will also be included. For torsion angles, if less than 5% of the Mogul distribution of torsion angles is within 10 degrees of the torsion angle in question, then that torsion angle is considered an outlier. Any bond that is central to one or more torsion angles identified as an outlier by Mogul will be highlighted in the graph. For rings, the root-mean-square deviation (RMSD) between the ring in question and similar rings identified by Mogul is calculated over all ring torsion angles. If the average RMSD is greater than 60 degrees and the minimal RMSD between the ring in question and any Mogul-identified rings is also greater than 60 degrees, then that ring is considered an outlier. The outliers are highlighted in purple. The color gray indicates Mogul did not find sufficient equivalents in the CSD to analyse the geometry.





5.7 Other polymers [i](#)

There are no such residues in this entry.

5.8 Polymer linkage issues [i](#)

There are no chain breaks in this entry.

6 Fit of model and data [i](#)

6.1 Protein, DNA and RNA chains [i](#)

In the following table, the column labelled ‘#RSRZ > 2’ contains the number (and percentage) of RSRZ outliers, followed by percent RSRZ outliers for the chain as percentile scores relative to all X-ray entries and entries of similar resolution. The OWAB column contains the minimum, median, 95th percentile and maximum values of the occupancy-weighted average B-factor per residue. The column labelled ‘Q < 0.9’ lists the number of (and percentage) of residues with an average occupancy less than 0.9.

Mol	Chain	Analysed	<RSRZ>	#RSRZ>2	OWAB(Å ²)	Q<0.9
1	A	158/158 (100%)	-0.13	10 (6%) 20 14	6, 12, 38, 63	0
1	B	158/158 (100%)	-0.17	5 (3%) 47 39	7, 14, 37, 56	0
All	All	316/316 (100%)	-0.15	15 (4%) 31 25	6, 13, 37, 63	0

All (15) RSRZ outliers are listed below:

Mol	Chain	Res	Type	RSRZ
1	A	47	PRO	5.5
1	B	289	ALA	4.3
1	A	88[A]	ARG	4.0
1	A	151	ALA	4.0
1	B	286	ALA	4.0
1	A	46	GLY	3.7
1	A	48	GLN	3.7
1	B	288[A]	ARG	3.4
1	A	89	ALA	3.1
1	A	150[A]	ARG	2.9
1	B	283	VAL	2.8
1	A	149	THR	2.2
1	A	49	ASP	2.1
1	B	352	PHE	2.1
1	A	45	LEU	2.0

6.2 Non-standard residues in protein, DNA, RNA chains [i](#)

There are no non-standard protein/DNA/RNA residues in this entry.

6.3 Carbohydrates [i](#)

There are no monosaccharides in this entry.

6.4 Ligands

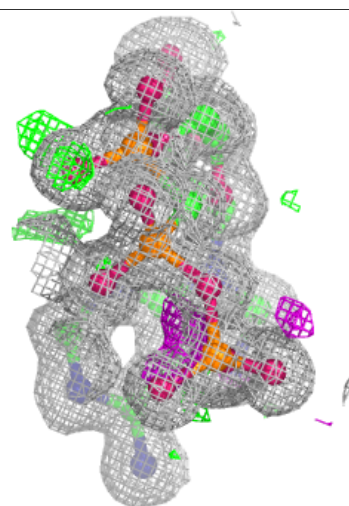
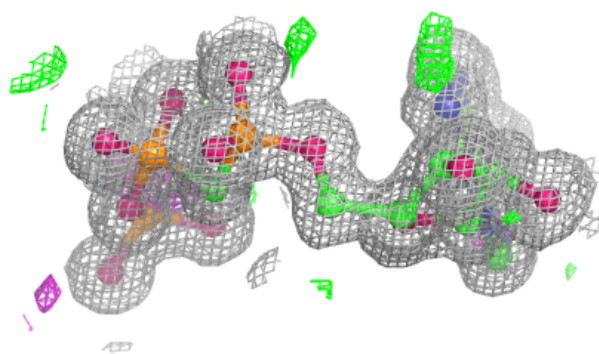
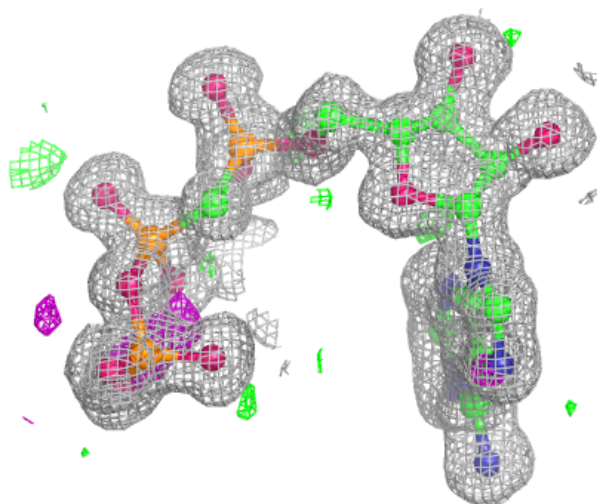
In the following table, the Atoms column lists the number of modelled atoms in the group and the number defined in the chemical component dictionary. The B-factors column lists the minimum, median, 95th percentile and maximum values of B factors of atoms in the group. The column labelled 'Q< 0.9' lists the number of atoms with occupancy less than 0.9.

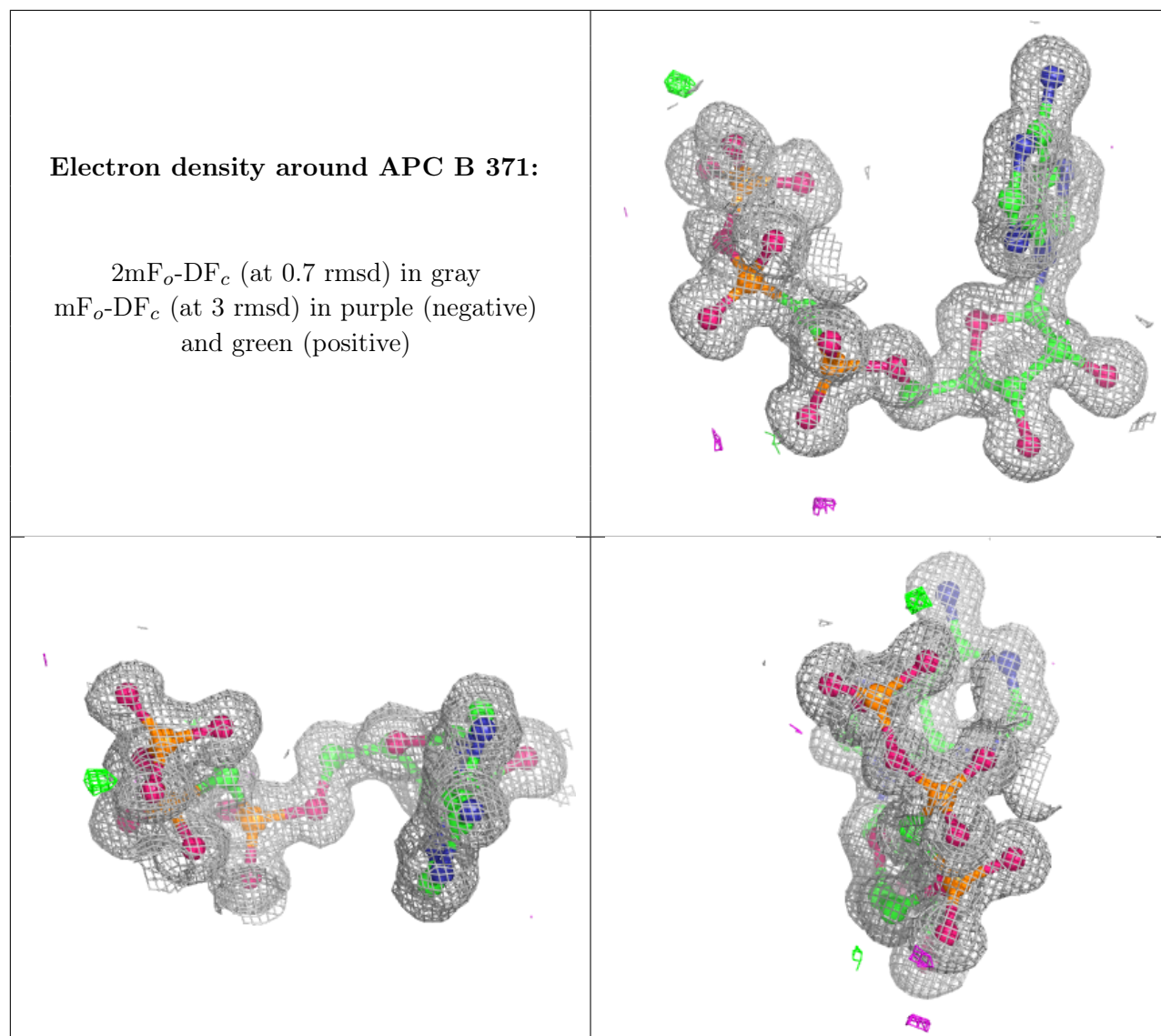
Mol	Type	Chain	Res	Atoms	RSCC	RSR	B-factors(Å ²)	Q<0.9
4	ACT	A	168	4/4	0.77	0.36	37,56,62,68	0
4	ACT	B	365	4/4	0.88	0.13	22,23,23,25	0
7	GOL	B	369	6/6	0.88	0.23	26,47,51,64	0
4	ACT	A	166	4/4	0.89	0.12	16,21,22,35	0
7	GOL	A	170	6/6	0.93	0.19	30,54,58,65	0
4	ACT	A	167	4/4	0.96	0.07	17,18,19,21	0
6	HHR	B	381	14/14	0.96	0.07	11,14,16,17	0
2	MG	A	163	1/1	0.98	0.08	27,27,27,27	0
3	CL	B	363	1/1	0.98	0.08	20,20,20,20	0
6	HHR	A	181	14/14	0.98	0.05	8,10,12,13	0
5	APC	A	171	31/31	0.99	0.04	6,9,12,12	0
5	APC	B	371	31/31	0.99	0.04	7,10,12,13	0
3	CL	A	364	1/1	1.00	0.02	16,16,16,16	0
2	MG	A	162	1/1	1.00	0.05	8,8,8,8	0
2	MG	A	161	1/1	1.00	0.03	7,7,7,7	0
2	MG	B	361	1/1	1.00	0.03	9,9,9,9	0
2	MG	B	362	1/1	1.00	0.05	9,9,9,9	0
3	CL	A	164	1/1	1.00	0.02	18,18,18,18	0

The following is a graphical depiction of the model fit to experimental electron density of all instances of the Ligand of Interest. In addition, ligands with molecular weight > 250 and outliers as shown on the geometry validation Tables will also be included. Each fit is shown from different orientation to approximate a three-dimensional view.

Electron density around APC A 171:

$2mF_o-DF_c$ (at 0.7 rmsd) in gray
 mF_o-DF_c (at 3 rmsd) in purple (negative)
and green (positive)





6.5 Other polymers [\(i\)](#)

There are no such residues in this entry.