



Full wwPDB X-ray Structure Validation Report ⓘ

Sep 5, 2023 – 12:43 PM EDT

PDB ID : 3TKY
Title : Monolignol o-methyltransferase (momt)
Authors : Bhuiya, M.W.; Liu, C.J.
Deposited on : 2011-08-29
Resolution : 2.47 Å(reported)

This is a Full wwPDB X-ray Structure Validation Report for a publicly released PDB entry.

We welcome your comments at validation@mail.wwpdb.org

A user guide is available at

<https://www.wwpdb.org/validation/2017/XrayValidationReportHelp>

with specific help available everywhere you see the ⓘ symbol.

The types of validation reports are described at

<http://www.wwpdb.org/validation/2017/FAQs#types>.

The following versions of software and data (see [references ⓘ](#)) were used in the production of this report:

MolProbity : 4.02b-467
Mogul : 1.8.5 (274361), CSD as541be (2020)
Xtriage (Phenix) : 1.13
EDS : 2.35
buster-report : 1.1.7 (2018)
Percentile statistics : 20191225.v01 (using entries in the PDB archive December 25th 2019)
Refmac : 5.8.0158
CCP4 : 7.0.044 (Gargrove)
Ideal geometry (proteins) : Engh & Huber (2001)
Ideal geometry (DNA, RNA) : Parkinson et al. (1996)
Validation Pipeline (wwPDB-VP) : 2.35

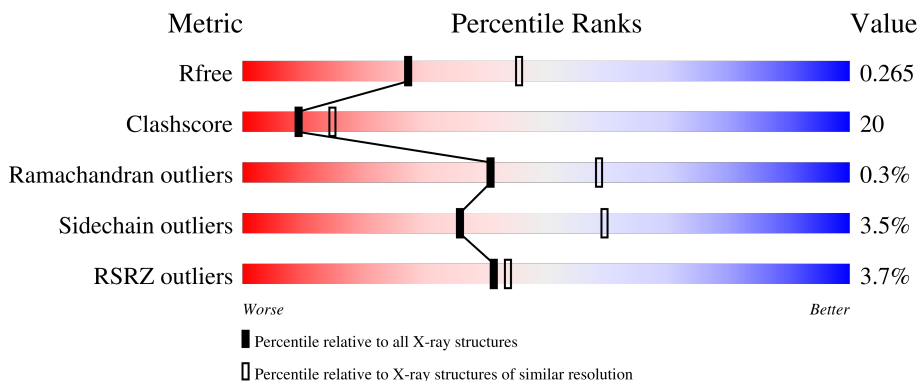
1 Overall quality at a glance

The following experimental techniques were used to determine the structure:

X-RAY DIFFRACTION

The reported resolution of this entry is 2.47 Å.

Percentile scores (ranging between 0-100) for global validation metrics of the entry are shown in the following graphic. The table shows the number of entries on which the scores are based.



Metric	Whole archive (#Entries)	Similar resolution (#Entries, resolution range(Å))
R_{free}	130704	5857 (2.50-2.46)
Clashscore	141614	6594 (2.50-2.46)
Ramachandran outliers	138981	6469 (2.50-2.46)
Sidechain outliers	138945	6471 (2.50-2.46)
RSRZ outliers	127900	5738 (2.50-2.46)

The table below summarises the geometric issues observed across the polymeric chains and their fit to the electron density. The red, orange, yellow and green segments of the lower bar indicate the fraction of residues that contain outliers for ≥ 3 , 2, 1 and 0 types of geometric quality criteria respectively. A grey segment represents the fraction of residues that are not modelled. The numeric value for each fraction is indicated below the corresponding segment, with a dot representing fractions $\leq 5\%$. The upper red bar (where present) indicates the fraction of residues that have poor fit to the electron density. The numeric value is given above the bar.

Mol	Chain	Length	Quality of chain
1	A	368	
1	B	368	
1	C	368	
1	D	368	

The following table lists non-polymeric compounds, carbohydrate monomers and non-standard

residues in protein, DNA, RNA chains that are outliers for geometric or electron-density-fit criteria:

Mol	Type	Chain	Res	Chirality	Geometry	Clashes	Electron density
2	N7I	A	369	-	-	X	X
2	N7I	B	369	-	-	X	X
2	N7I	C	369	-	-	X	X
2	N7I	D	369	-	-	X	X

2 Entry composition [i](#)

There are 4 unique types of molecules in this entry. The entry contains 11065 atoms, of which 0 are hydrogens and 0 are deuteriums.

In the tables below, the ZeroOcc column contains the number of atoms modelled with zero occupancy, the AltConf column contains the number of residues with at least one atom in alternate conformation and the Trace column contains the number of residues modelled with at most 2 atoms.

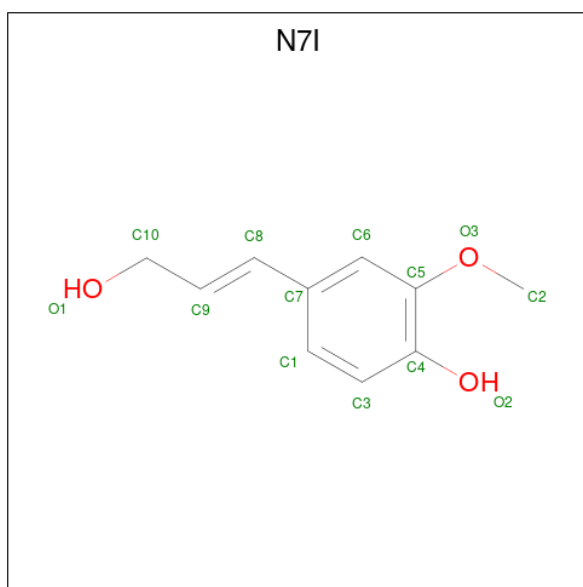
- Molecule 1 is a protein called (Iso)eugenol O-methyltransferase.

Mol	Chain	Residues	Atoms					ZeroOcc	AltConf	Trace
			Total	C	N	O	S			
1	A	352	2694	1744	433	499	18	0	0	0
1	B	349	2681	1737	432	494	18	0	0	0
1	C	352	2694	1744	433	499	18	0	0	0
1	D	348	2674	1732	431	493	18	0	0	0

There are 12 discrepancies between the modelled and reference sequences:

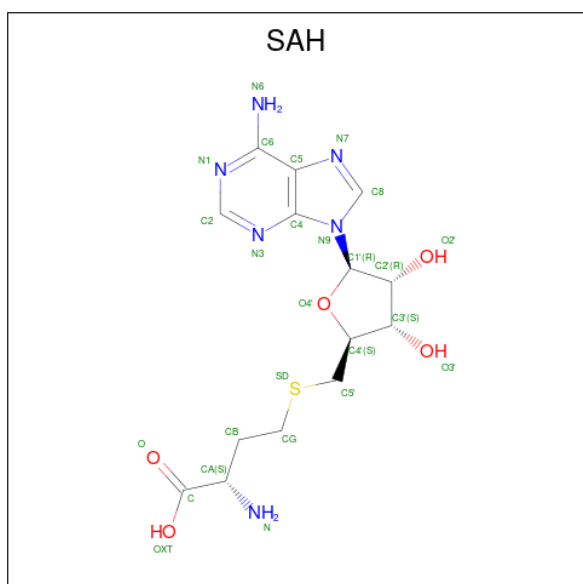
Chain	Residue	Modelled	Actual	Comment	Reference
A	133	LEU	THR	engineered mutation	UNP O04385
A	165	ILE	GLU	engineered mutation	UNP O04385
A	175	ILE	PHE	engineered mutation	UNP O04385
B	133	LEU	THR	engineered mutation	UNP O04385
B	165	ILE	GLU	engineered mutation	UNP O04385
B	175	ILE	PHE	engineered mutation	UNP O04385
C	133	LEU	THR	engineered mutation	UNP O04385
C	165	ILE	GLU	engineered mutation	UNP O04385
C	175	ILE	PHE	engineered mutation	UNP O04385
D	133	LEU	THR	engineered mutation	UNP O04385
D	165	ILE	GLU	engineered mutation	UNP O04385
D	175	ILE	PHE	engineered mutation	UNP O04385

- Molecule 2 is 4-[(1E)-3-hydroxyprop-1-en-1-yl]-2-methoxyphenol (three-letter code: N7I) (formula: C₁₀H₁₂O₃).



Mol	Chain	Residues	Atoms		ZeroOcc	AltConf
2	A	1	Total	C O	0	0
			13	10 3		
2	B	1	Total	C O	0	0
			13	10 3		
2	C	1	Total	C O	0	0
			13	10 3		
2	D	1	Total	C O	0	0
			13	10 3		

- Molecule 3 is S-ADENOSYL-L-HOMOCYSTEINE (three-letter code: SAH) (formula: $C_{14}H_{20}N_6O_5S$).



Mol	Chain	Residues	Atoms					ZeroOcc	AltConf
3	A	1	Total	C	N	O	S	0	0
			26	14	6	5	1		
3	B	1	Total	C	N	O	S	0	0
			26	14	6	5	1		
3	C	1	Total	C	N	O	S	0	0
			26	14	6	5	1		
3	D	1	Total	C	N	O	S	0	0
			26	14	6	5	1		

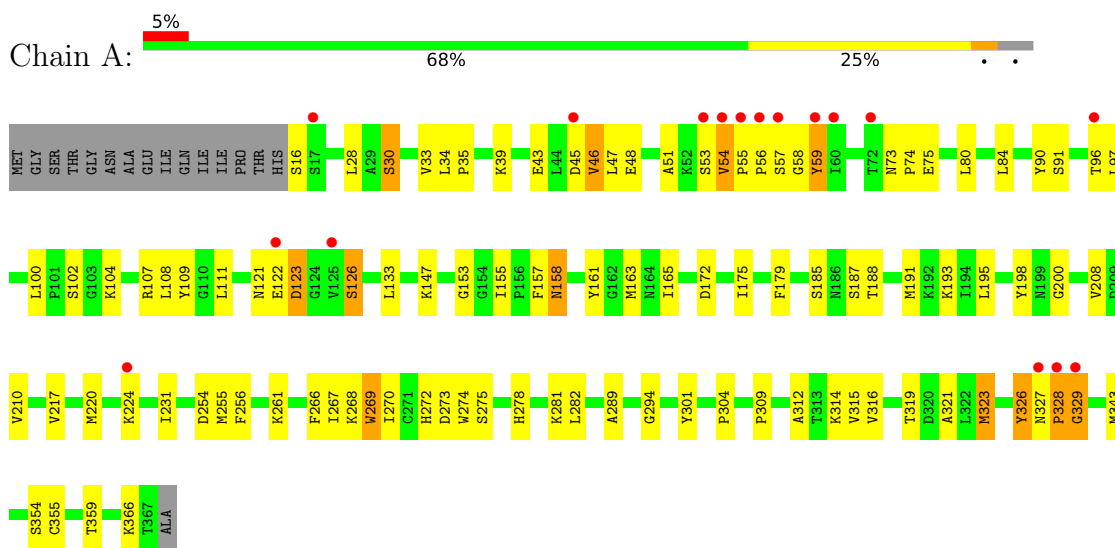
- Molecule 4 is water.

Mol	Chain	Residues	Atoms		ZeroOcc	AltConf
4	A	35	Total	O	0	0
			35	35		
4	B	46	Total	O	0	0
			46	46		
4	C	50	Total	O	0	0
			50	50		
4	D	35	Total	O	0	0
			35	35		

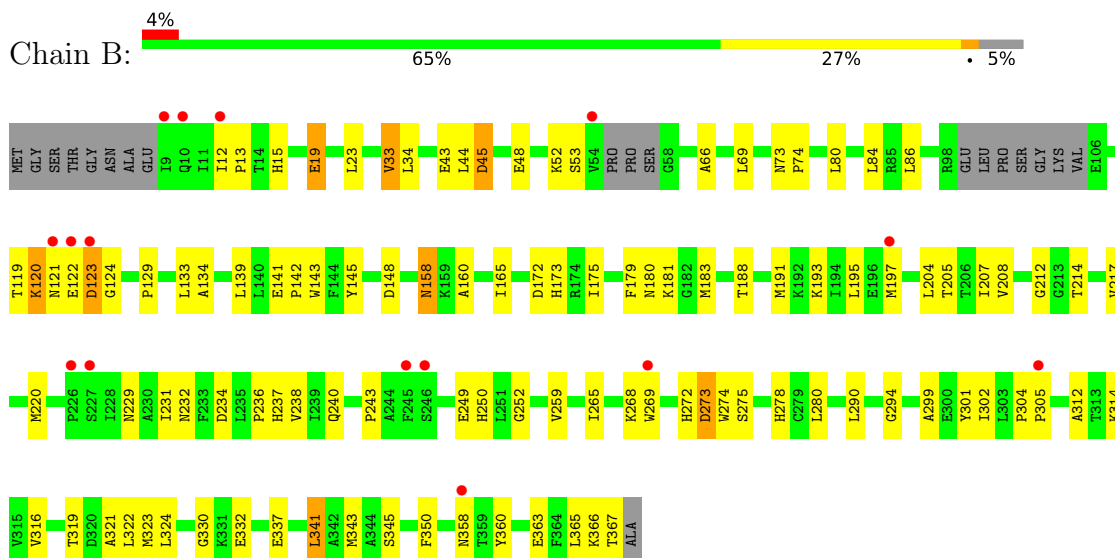
3 Residue-property plots i

These plots are drawn for all protein, RNA, DNA and oligosaccharide chains in the entry. The first graphic for a chain summarises the proportions of the various outlier classes displayed in the second graphic. The second graphic shows the sequence view annotated by issues in geometry and electron density. Residues are color-coded according to the number of geometric quality criteria for which they contain at least one outlier: green = 0, yellow = 1, orange = 2 and red = 3 or more. A red dot above a residue indicates a poor fit to the electron density ($RSRZ > 2$). Stretches of 2 or more consecutive residues without any outlier are shown as a green connector. Residues present in the sample, but not in the model, are shown in grey.

- Molecule 1: (Iso)eugenol O-methyltransferase

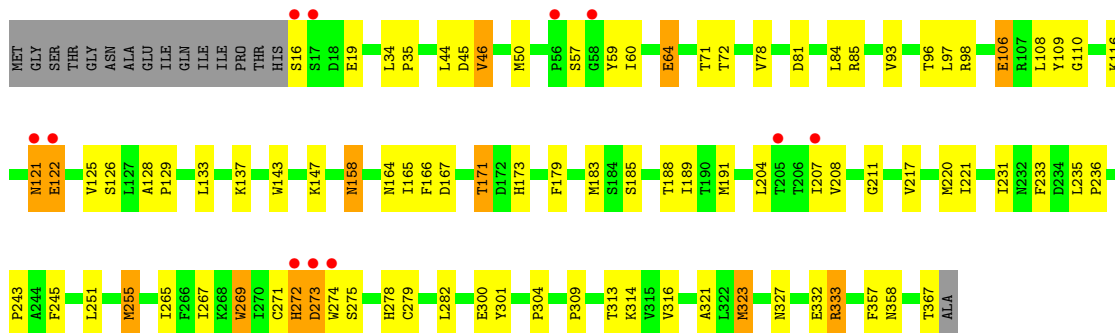


- Molecule 1: (Iso)eugenol O-methyltransferase

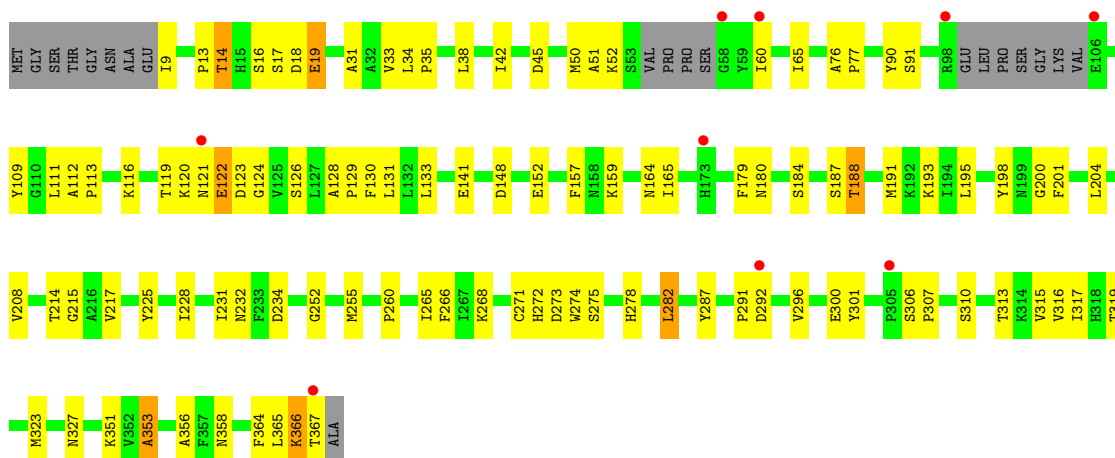


- Molecule 1: (Iso)eugenol O-methyltransferase





• Molecule 1: (Iso)eugenol O-methyltransferase



4 Data and refinement statistics i

Property	Value	Source
Space group	P 1 21 1	Depositor
Cell constants a, b, c, α , β , γ	65.86Å 152.16Å 68.18Å 90.00° 94.92° 90.00°	Depositor
Resolution (Å)	50.00 – 2.47 38.92 – 2.47	Depositor EDS
% Data completeness (in resolution range)	100.0 (50.00-2.47) 100.0 (38.92-2.47)	Depositor EDS
R_{merge}	0.13	Depositor
R_{sym}	(Not available)	Depositor
$\langle I/\sigma(I) \rangle$ ¹	4.67 (at 2.48Å)	Xtrriage
Refinement program	REFMAC 5.5, CNS 1.1	Depositor
R, R_{free}	0.193 , 0.262 0.206 , 0.265	Depositor DCC
R_{free} test set	2447 reflections (5.11%)	wwPDB-VP
Wilson B-factor (Å ²)	23.9	Xtrriage
Anisotropy	0.107	Xtrriage
Bulk solvent k_{sol} (e/Å ³), B_{sol} (Å ²)	0.41 , 45.7	EDS
L-test for twinning ²	$\langle L \rangle = 0.49$, $\langle L^2 \rangle = 0.33$	Xtrriage
Estimated twinning fraction	0.022 for l,-k,h	Xtrriage
F_o, F_c correlation	0.92	EDS
Total number of atoms	11065	wwPDB-VP
Average B, all atoms (Å ²)	20.0	wwPDB-VP

Xtrriage's analysis on translational NCS is as follows: *The largest off-origin peak in the Patterson function is 3.84% of the height of the origin peak. No significant pseudotranslation is detected.*

¹Intensities estimated from amplitudes.

²Theoretical values of $\langle |L| \rangle$, $\langle L^2 \rangle$ for acentric reflections are 0.5, 0.333 respectively for untwinned datasets, and 0.375, 0.2 for perfectly twinned datasets.

5 Model quality

5.1 Standard geometry

Bond lengths and bond angles in the following residue types are not validated in this section: SAH, N7I

The Z score for a bond length (or angle) is the number of standard deviations the observed value is removed from the expected value. A bond length (or angle) with $|Z| > 5$ is considered an outlier worth inspection. RMSZ is the root-mean-square of all Z scores of the bond lengths (or angles).

Mol	Chain	Bond lengths		Bond angles	
		RMSZ	# Z >5	RMSZ	# Z >5
1	A	0.88	1/2759 (0.0%)	0.88	5/3749 (0.1%)
1	B	0.92	2/2743 (0.1%)	0.88	4/3724 (0.1%)
1	C	0.89	0/2759	0.86	4/3749 (0.1%)
1	D	0.83	0/2736	0.87	3/3714 (0.1%)
All	All	0.88	3/10997 (0.0%)	0.87	16/14936 (0.1%)

Chiral center outliers are detected by calculating the chiral volume of a chiral center and verifying if the center is modelled as a planar moiety or with the opposite hand. A planarity outlier is detected by checking planarity of atoms in a peptide group, atoms in a mainchain group or atoms of a sidechain that are expected to be planar.

Mol	Chain	#Chirality outliers	#Planarity outliers
1	C	0	1

All (3) bond length outliers are listed below:

Mol	Chain	Res	Type	Atoms	Z	Observed(Å)	Ideal(Å)
1	A	163	MET	C-N	5.99	1.47	1.34
1	B	332	GLU	CD-OE2	-5.92	1.19	1.25
1	B	332	GLU	CD-OE1	-5.24	1.19	1.25

All (16) bond angle outliers are listed below:

Mol	Chain	Res	Type	Atoms	Z	Observed(°)	Ideal(°)
1	B	119	THR	O-C-N	5.98	132.27	122.70
1	B	273	ASP	CB-CG-OD2	5.87	123.58	118.30
1	A	329	GLY	N-CA-C	5.75	127.48	113.10
1	B	330	GLY	O-C-N	-5.74	113.51	122.70
1	C	121	ASN	CB-CA-C	-5.69	99.02	110.40
1	A	126	SER	N-CA-CB	-5.53	102.20	110.50

Continued on next page...

Continued from previous page...

Mol	Chain	Res	Type	Atoms	Z	Observed(°)	Ideal(°)
1	D	353	ALA	CB-CA-C	5.46	118.29	110.10
1	A	323	MET	CG-SD-CE	5.45	108.92	100.20
1	C	106	GLU	CA-C-N	-5.41	105.29	117.20
1	C	81	ASP	CB-CG-OD1	5.36	123.12	118.30
1	D	19	GLU	O-C-N	5.32	131.22	122.70
1	A	326	TYR	C-N-CA	5.25	134.82	121.70
1	D	282	LEU	CA-CB-CG	5.24	127.35	115.30
1	A	123	ASP	N-CA-CB	-5.24	101.17	110.60
1	C	323	MET	CG-SD-CE	5.12	108.40	100.20
1	B	120	LYS	N-CA-C	-5.08	97.29	111.00

There are no chirality outliers.

All (1) planarity outliers are listed below:

Mol	Chain	Res	Type	Group
1	C	333	ARG	Sidechain

5.2 Too-close contacts

In the following table, the Non-H and H(model) columns list the number of non-hydrogen atoms and hydrogen atoms in the chain respectively. The H(added) column lists the number of hydrogen atoms added and optimized by MolProbity. The Clashes column lists the number of clashes within the asymmetric unit, whereas Symm-Clashes lists symmetry-related clashes.

Mol	Chain	Non-H	H(model)	H(added)	Clashes	Symm-Clashes
1	A	2694	0	2711	151	0
1	B	2681	0	2697	118	0
1	C	2694	0	2711	88	0
1	D	2674	0	2689	108	0
2	A	13	0	12	14	0
2	B	13	0	12	7	0
2	C	13	0	12	6	0
2	D	13	0	12	7	0
3	A	26	0	19	0	0
3	B	26	0	19	2	0
3	C	26	0	19	3	0
3	D	26	0	19	0	0
4	A	35	0	0	2	0
4	B	46	0	0	7	0
4	C	50	0	0	5	0
4	D	35	0	0	2	0

Continued on next page...

Continued from previous page...

Mol	Chain	Non-H	H(model)	H(added)	Clashes	Symm-Clashes
All	All	11065	0	10932	434	0

The all-atom clashscore is defined as the number of clashes found per 1000 atoms (including hydrogen atoms). The all-atom clashscore for this structure is 20.

All (434) close contacts within the same asymmetric unit are listed below, sorted by their clash magnitude.

Atom-1	Atom-2	Interatomic distance (Å)	Clash overlap (Å)
1:A:273:ASP:HA	1:A:323:MET:CE	1.47	1.44
1:B:273:ASP:HA	1:B:323:MET:CE	1.58	1.32
1:A:273:ASP:HA	1:A:323:MET:HE1	1.22	1.15
1:A:269:TRP:CD1	1:A:272:HIS:CE1	2.33	1.15
1:D:50:MET:HG2	1:D:60:ILE:HD11	1.16	1.14
1:A:30:SER:HB2	4:A:380:HOH:O	1.45	1.12
1:A:147:LYS:CD	1:B:43:GLU:HB3	1.79	1.12
1:A:327:ASN:HA	2:A:369:N7I:H2	1.22	1.11
1:D:42:ILE:HD13	1:D:131:LEU:HD23	1.28	1.11
1:D:42:ILE:CD1	1:D:131:LEU:CD2	2.29	1.10
1:A:46:VAL:HG12	1:A:46:VAL:O	1.49	1.09
1:C:16:SER:OG	1:C:19:GLU:HB2	1.51	1.08
1:A:147:LYS:HD2	1:B:43:GLU:CB	1.86	1.06
1:D:42:ILE:CD1	1:D:131:LEU:HD23	1.87	1.05
1:B:319:THR:HG21	4:B:375:HOH:O	1.56	1.04
1:D:50:MET:HG2	1:D:60:ILE:CD1	1.88	1.04
1:A:269:TRP:CG	1:A:272:HIS:CE1	2.46	1.02
1:A:269:TRP:HA	1:A:272:HIS:CE1	1.95	1.01
1:D:184:SER:O	1:D:188:THR:HG23	1.60	1.01
1:A:208:VAL:HG22	1:A:231:ILE:HB	1.42	1.00
1:D:272:HIS:CD2	1:D:323:MET:SD	2.53	1.00
1:A:122:GLU:O	1:A:123:ASP:HB2	1.57	1.00
1:B:273:ASP:HA	1:B:323:MET:HE1	1.39	1.00
1:A:273:ASP:HA	1:A:323:MET:HE2	1.42	0.99
1:A:273:ASP:CA	1:A:323:MET:CE	2.40	0.98
1:C:207:ILE:CD1	1:C:221:ILE:HG21	1.93	0.98
1:C:367:THR:HG23	1:C:367:THR:O	1.60	0.98
1:A:147:LYS:HD2	1:B:43:GLU:HB3	1.01	0.98
1:A:269:TRP:CA	1:A:272:HIS:HE1	1.76	0.98
1:B:366:LYS:HA	4:B:389:HOH:O	1.63	0.97
1:B:273:ASP:HA	1:B:323:MET:HE2	1.46	0.97
1:B:52:LYS:O	1:B:53:SER:OG	1.84	0.96
1:C:207:ILE:HD13	1:C:221:ILE:HG21	1.47	0.95

Continued on next page...

Continued from previous page...

Atom-1	Atom-2	Interatomic distance (Å)	Clash overlap (Å)
1:A:30:SER:O	1:A:33:VAL:HG23	1.66	0.94
1:D:273:ASP:HA	1:D:323:MET:HE2	1.47	0.94
1:D:42:ILE:HD12	1:D:131:LEU:CD2	1.99	0.93
1:A:269:TRP:CB	1:A:272:HIS:HE1	1.81	0.92
1:B:208:VAL:HG23	1:B:231:ILE:HB	1.51	0.90
1:A:46:VAL:O	1:A:46:VAL:CG1	2.20	0.90
1:A:193:LYS:HE3	1:B:15:HIS:CE1	2.06	0.89
1:A:269:TRP:CG	1:A:272:HIS:HE1	1.86	0.89
1:D:42:ILE:HD13	1:D:131:LEU:CD2	1.98	0.88
1:C:16:SER:OG	1:C:19:GLU:CB	2.22	0.88
1:B:366:LYS:CA	4:B:389:HOH:O	2.20	0.87
1:A:133:LEU:HD13	1:A:179:PHE:HA	1.56	0.87
1:A:269:TRP:CA	1:A:272:HIS:CE1	2.57	0.87
1:C:272:HIS:CE1	1:C:273:ASP:OD2	2.27	0.86
1:C:269:TRP:CE3	2:C:369:N7I:H3	2.11	0.86
1:D:122:GLU:CD	1:D:122:GLU:N	2.28	0.85
1:A:107:ARG:O	1:A:108:LEU:HD12	1.76	0.85
1:A:193:LYS:HE3	1:B:15:HIS:ND1	1.93	0.84
1:C:93:VAL:HG13	1:C:110:GLY:O	1.77	0.84
1:C:71:THR:O	1:C:72:THR:HG22	1.76	0.84
1:D:42:ILE:HD12	1:D:131:LEU:HD21	1.60	0.83
1:A:155:ILE:HG12	1:A:327:ASN:OD1	1.78	0.83
1:D:122:GLU:CD	1:D:122:GLU:H	1.80	0.82
1:D:351:LYS:HE3	1:D:353:ALA:HB2	1.61	0.82
1:C:16:SER:HG	1:C:19:GLU:HB2	1.43	0.82
1:A:122:GLU:O	1:A:123:ASP:CB	2.27	0.82
1:A:133:LEU:CD1	1:A:179:PHE:HA	2.10	0.82
1:C:272:HIS:HB3	1:C:300:GLU:OE1	1.80	0.81
1:A:323:MET:O	1:A:327:ASN:HB3	1.81	0.81
1:A:323:MET:CE	2:A:369:N7I:H2A	2.10	0.81
1:A:273:ASP:CA	1:A:323:MET:HE2	2.09	0.80
1:A:275:SER:OG	1:A:278:HIS:HD2	1.66	0.79
1:A:272:HIS:C	1:A:323:MET:HE2	2.02	0.79
1:C:367:THR:O	1:C:367:THR:CG2	2.30	0.79
1:B:301:TYR:CG	1:B:316:VAL:HG22	2.19	0.78
1:B:337:GLU:O	1:B:341:LEU:HD23	1.83	0.78
1:B:273:ASP:CA	1:B:323:MET:CE	2.53	0.77
1:B:301:TYR:HD2	1:B:358:ASN:O	1.68	0.77
1:D:191:MET:HG3	1:D:195:LEU:CD2	2.15	0.76
1:B:139:LEU:HD21	2:B:369:N7I:H2B	1.68	0.75
1:A:107:ARG:C	1:A:108:LEU:HD12	2.07	0.74

Continued on next page...

Continued from previous page...

Atom-1	Atom-2	Interatomic distance (Å)	Clash overlap (Å)
1:D:148:ASP:O	1:D:152:GLU:HG2	1.88	0.74
1:A:343:MET:CG	1:D:9:ILE:HD12	2.18	0.74
1:B:272:HIS:O	1:B:323:MET:HE2	1.88	0.73
1:B:191:MET:HG3	1:B:217:VAL:HG22	1.70	0.73
1:D:50:MET:CG	1:D:60:ILE:HD11	2.09	0.73
1:A:327:ASN:OD1	1:A:327:ASN:O	2.05	0.73
1:A:273:ASP:N	1:A:323:MET:HE2	2.04	0.72
1:D:133:LEU:HG	2:D:369:N7I:H3	1.72	0.72
1:A:220:MET:O	1:A:224:LYS:HG2	1.90	0.71
1:B:165:ILE:HD11	2:B:369:N7I:H2	1.71	0.71
1:A:73:ASN:O	1:A:75:GLU:N	2.24	0.71
1:A:323:MET:HE1	2:A:369:N7I:H2A	1.73	0.70
1:D:275:SER:OG	1:D:278:HIS:HD2	1.73	0.70
1:C:188:THR:HA	1:C:220:MET:HE1	1.74	0.70
1:A:45:ASP:OD1	1:A:48:GLU:HB2	1.91	0.70
1:A:172:ASP:HB3	1:A:175:ILE:HG22	1.72	0.70
1:D:287:TYR:O	1:D:366:LYS:NZ	2.23	0.69
1:B:273:ASP:CA	1:B:323:MET:HE2	2.18	0.69
1:A:272:HIS:O	1:A:323:MET:HE2	1.93	0.69
1:D:133:LEU:CG	2:D:369:N7I:H3	2.23	0.69
1:A:147:LYS:CE	1:B:43:GLU:HB3	2.23	0.68
1:A:210:VAL:HG12	1:A:255:MET:HE1	1.74	0.68
1:D:296:VAL:CG1	1:D:364:PHE:HB2	2.23	0.68
1:A:187:SER:OG	1:A:268:LYS:HE3	1.93	0.68
1:C:183:MET:HE3	4:C:381:HOH:O	1.94	0.68
1:D:291:PRO:O	1:D:366:LYS:HE2	1.94	0.68
1:A:267:ILE:HG22	1:A:270:ILE:HG13	1.76	0.68
1:B:122:GLU:HG3	1:B:123:ASP:H	1.58	0.68
1:D:133:LEU:HD21	2:D:369:N7I:C3	2.23	0.68
1:A:273:ASP:CA	1:A:323:MET:HE1	2.13	0.68
1:C:84:LEU:HD13	1:C:109:TYR:CD1	2.29	0.67
1:D:315:VAL:O	1:D:319:THR:HG23	1.95	0.67
1:C:301:TYR:CG	1:C:316:VAL:HG22	2.28	0.67
1:B:122:GLU:HG3	1:B:123:ASP:N	2.10	0.67
1:C:272:HIS:O	1:C:272:HIS:CG	2.46	0.67
1:B:272:HIS:C	1:B:323:MET:HE2	2.14	0.67
1:A:272:HIS:O	1:A:323:MET:CE	2.42	0.67
1:B:301:TYR:CD2	1:B:358:ASN:O	2.48	0.67
1:D:193:LYS:HG2	1:D:356:ALA:HB1	1.77	0.67
1:B:193:LYS:O	1:B:197:MET:HG2	1.93	0.66
1:B:236:PRO:O	1:B:240:GLN:HG2	1.95	0.66

Continued on next page...

Continued from previous page...

Atom-1	Atom-2	Interatomic distance (Å)	Clash overlap (Å)
1:C:207:ILE:CD1	1:C:221:ILE:CG2	2.72	0.66
1:D:122:GLU:N	1:D:122:GLU:OE1	2.29	0.66
1:A:155:ILE:HG23	1:A:327:ASN:OD1	1.96	0.66
1:A:275:SER:OG	1:A:278:HIS:CD2	2.49	0.66
1:C:143:TRP:CH2	1:D:33:VAL:HG13	2.31	0.66
1:C:272:HIS:ND1	1:C:273:ASP:OD2	2.28	0.65
1:A:96:THR:HG22	1:A:97:LEU:N	2.10	0.65
1:B:172:ASP:HB3	1:B:175:ILE:HG22	1.78	0.65
1:C:357:PHE:CE2	1:D:19:GLU:HA	2.32	0.65
1:A:312:ALA:HA	1:B:23:LEU:HD13	1.79	0.65
1:B:208:VAL:CG2	1:B:231:ILE:HB	2.26	0.65
1:D:121:ASN:HB2	1:D:122:GLU:OE1	1.97	0.65
1:B:129:PRO:HB3	1:B:181:LYS:HE3	1.77	0.64
1:D:296:VAL:HG12	1:D:364:PHE:HB2	1.77	0.64
1:B:158:ASN:H	1:B:158:ASN:HD22	1.45	0.64
1:A:327:ASN:CA	2:A:369:N7I:H2	2.14	0.64
1:B:208:VAL:HG13	1:B:265:ILE:HD12	1.79	0.64
1:D:255:MET:CG	1:D:282:LEU:HD13	2.28	0.64
1:A:58:GLY:C	1:A:59:TYR:CD1	2.70	0.64
1:C:98:ARG:N	1:C:106:GLU:O	2.26	0.64
1:A:343:MET:HG2	1:D:9:ILE:HD12	1.80	0.64
1:C:188:THR:HA	1:C:220:MET:CE	2.27	0.64
1:C:267:ILE:HD12	1:C:271:CYS:SG	2.38	0.63
1:A:80:LEU:O	1:A:84:LEU:HG	1.98	0.63
1:B:366:LYS:C	4:B:389:HOH:O	2.33	0.63
1:A:343:MET:HG3	1:D:9:ILE:HD12	1.79	0.62
1:B:366:LYS:O	1:B:367:THR:C	2.37	0.62
1:C:357:PHE:HE2	1:D:19:GLU:HA	1.64	0.62
1:D:272:HIS:NE2	1:D:323:MET:SD	2.72	0.62
1:A:327:ASN:HB2	1:A:329:GLY:H	1.62	0.62
1:A:273:ASP:O	1:A:328:PRO:HD2	2.00	0.62
2:A:369:N7I:O2	2:A:369:N7I:H2B	1.99	0.62
1:A:193:LYS:NZ	1:B:19:GLU:OE2	2.31	0.62
1:B:122:GLU:CG	1:B:123:ASP:H	2.13	0.62
1:B:274:TRP:HB3	1:B:278:HIS:HB2	1.82	0.62
1:D:60:ILE:HD12	1:D:65:ILE:HG12	1.81	0.61
1:A:188:THR:HA	1:A:220:MET:HE1	1.82	0.61
1:D:121:ASN:CB	1:D:122:GLU:OE1	2.48	0.61
1:C:275:SER:OG	1:C:278:HIS:HD2	1.83	0.61
1:B:234:ASP:OD2	1:B:238:VAL:HG21	2.00	0.61
1:C:158:ASN:HD22	1:C:158:ASN:H	1.48	0.61

Continued on next page...

Continued from previous page...

Atom-1	Atom-2	Interatomic distance (Å)	Clash overlap (Å)
1:D:208:VAL:HG23	1:D:231:ILE:CG2	2.31	0.61
1:D:255:MET:HB2	1:D:282:LEU:CD1	2.31	0.60
1:A:191:MET:O	1:A:195:LEU:HG	2.00	0.60
1:A:343:MET:HG2	1:D:9:ILE:HB	1.83	0.60
1:C:179:PHE:CE1	2:C:369:N7I:H2A	2.35	0.60
1:D:208:VAL:HG13	1:D:265:ILE:HG12	1.84	0.60
1:D:60:ILE:HD12	1:D:65:ILE:CG1	2.30	0.60
1:C:273:ASP:HB3	1:C:327:ASN:OD1	2.02	0.60
1:D:184:SER:O	1:D:188:THR:CG2	2.44	0.60
1:A:301:TYR:CG	1:A:316:VAL:HG12	2.37	0.60
1:B:234:ASP:OD2	1:B:238:VAL:CG2	2.50	0.59
1:B:365:LEU:HB2	1:B:367:THR:HG22	1.83	0.59
1:A:269:TRP:CB	1:A:272:HIS:CE1	2.72	0.59
1:D:208:VAL:HG23	1:D:231:ILE:HG22	1.85	0.59
1:A:323:MET:HE1	2:A:369:N7I:C2	2.32	0.59
1:D:180:ASN:HB3	1:D:214:THR:CG2	2.32	0.59
1:B:134:ALA:HB2	2:B:369:N7I:H10	1.85	0.59
1:A:266:PHE:CE1	1:A:268:LYS:HB2	2.38	0.58
1:B:173:HIS:CE1	4:B:379:HOH:O	2.55	0.58
1:D:255:MET:HG3	1:D:282:LEU:HD13	1.85	0.58
1:B:268:LYS:O	1:B:269:TRP:HB2	2.03	0.58
1:C:207:ILE:HD13	1:C:221:ILE:CG2	2.27	0.58
1:B:208:VAL:HG23	1:B:231:ILE:CB	2.28	0.58
1:C:191:MET:HG3	1:C:217:VAL:HG22	1.85	0.58
1:C:85:ARG:HG3	1:D:307:PRO:HG3	1.85	0.58
1:D:272:HIS:HD2	1:D:323:MET:SD	2.23	0.58
1:A:59:TYR:CD1	1:A:59:TYR:N	2.70	0.58
1:A:56:PRO:O	1:A:57:SER:HB2	2.03	0.58
1:A:147:LYS:HE3	1:B:43:GLU:O	2.04	0.58
1:C:179:PHE:CZ	2:C:369:N7I:H2A	2.39	0.58
1:A:304:PRO:HD3	1:A:316:VAL:HG21	1.84	0.58
1:C:301:TYR:CD1	1:C:316:VAL:HG22	2.39	0.57
1:D:76:ALA:HB3	1:D:77:PRO:HD3	1.86	0.57
1:C:204:LEU:HD13	1:C:207:ILE:HG22	1.86	0.57
1:B:208:VAL:CG1	1:B:265:ILE:HD12	2.34	0.57
1:C:272:HIS:HE1	2:C:369:N7I:C4	2.17	0.57
1:B:122:GLU:HG3	1:B:123:ASP:OD2	2.04	0.57
1:D:128:ALA:O	1:D:131:LEU:HB3	2.04	0.57
1:C:282:LEU:C	1:C:282:LEU:HD23	2.25	0.57
1:C:243:PRO:HG2	1:C:245:PHE:CZ	2.40	0.57
1:D:180:ASN:HB3	1:D:214:THR:HG21	1.87	0.57

Continued on next page...

Continued from previous page...

Atom-1	Atom-2	Interatomic distance (Å)	Clash overlap (Å)
1:D:198:TYR:CZ	1:D:200:GLY:HA3	2.40	0.57
1:A:155:ILE:HG21	1:A:327:ASN:O	2.05	0.56
1:A:301:TYR:CD1	1:A:316:VAL:HG12	2.41	0.56
1:A:321:ALA:HB3	1:B:33:VAL:HG21	1.87	0.56
1:A:326:TYR:HB2	2:A:369:N7I:H6	1.87	0.56
1:C:71:THR:O	1:C:72:THR:CG2	2.51	0.56
1:C:272:HIS:HD2	1:C:332:GLU:OE2	1.87	0.56
1:D:193:LYS:CG	1:D:356:ALA:HB1	2.35	0.56
1:B:272:HIS:O	1:B:323:MET:CE	2.53	0.56
1:A:155:ILE:CG2	1:A:327:ASN:OD1	2.54	0.56
1:C:173:HIS:HB3	4:C:416:HOH:O	2.06	0.56
1:B:145:TYR:CE2	1:B:160:ALA:HB2	2.40	0.56
1:C:272:HIS:HB3	1:C:300:GLU:CD	2.26	0.55
1:D:128:ALA:HB3	1:D:129:PRO:HD3	1.87	0.55
1:A:28:LEU:CD2	1:B:34:LEU:HD21	2.36	0.55
1:C:34:LEU:HB3	1:C:35:PRO:CD	2.36	0.55
1:C:357:PHE:O	1:C:358:ASN:HB2	2.07	0.55
1:A:198:TYR:CZ	1:A:200:GLY:HA3	2.42	0.55
1:A:301:TYR:HE1	1:A:319:THR:HG21	1.72	0.55
1:C:122:GLU:O	1:C:125:VAL:HB	2.07	0.55
1:C:97:LEU:HD11	1:D:306:SER:HB3	1.89	0.54
1:C:272:HIS:HE1	2:C:369:N7I:O2	1.91	0.54
1:B:122:GLU:HG3	1:B:123:ASP:CG	2.27	0.54
1:A:96:THR:CG2	1:A:97:LEU:N	2.70	0.54
1:B:145:TYR:CD2	1:B:160:ALA:HB2	2.43	0.54
1:B:66:ALA:HA	1:B:69:LEU:HD12	1.90	0.54
1:A:133:LEU:HD13	1:A:179:PHE:CA	2.34	0.53
1:B:280:LEU:HD13	1:B:341:LEU:HD13	1.89	0.53
1:C:167:ASP:O	1:C:171:THR:HG23	2.09	0.53
1:D:51:ALA:HA	1:D:111:LEU:HD11	1.90	0.53
1:D:327:ASN:OD1	2:D:369:N7I:H2	2.08	0.53
1:A:301:TYR:HB3	1:A:316:VAL:HG12	1.90	0.53
1:A:34:LEU:HB3	1:A:35:PRO:CD	2.39	0.52
1:B:134:ALA:HB2	2:B:369:N7I:C10	2.39	0.52
1:A:59:TYR:HB3	1:A:109:TYR:C	2.30	0.52
1:D:217:VAL:HG23	4:D:399:HOH:O	2.08	0.52
1:B:214:THR:HG22	1:B:243:PRO:HD3	1.90	0.52
1:C:93:VAL:CG1	1:C:110:GLY:O	2.55	0.52
1:A:328:PRO:HD2	2:A:369:N7I:C2	2.39	0.52
1:C:314:LYS:HD2	1:D:90:TYR:CZ	2.45	0.52
1:A:315:VAL:O	1:A:319:THR:HG23	2.09	0.52

Continued on next page...

Continued from previous page...

Atom-1	Atom-2	Interatomic distance (Å)	Clash overlap (Å)
1:B:122:GLU:CG	1:B:123:ASP:N	2.71	0.52
1:D:90:TYR:O	1:D:91:SER:HB2	2.10	0.52
1:A:73:ASN:C	1:A:75:GLU:N	2.62	0.52
1:B:133:LEU:HD13	1:B:179:PHE:HA	1.92	0.52
1:C:275:SER:OG	1:C:278:HIS:CD2	2.62	0.52
1:B:33:VAL:HG13	1:B:86:LEU:HD21	1.92	0.52
1:B:301:TYR:CD1	1:B:316:VAL:HG22	2.45	0.52
1:D:191:MET:HG3	1:D:195:LEU:HD21	1.91	0.52
1:C:78:VAL:HG23	4:C:380:HOH:O	2.09	0.52
1:C:125:VAL:HG12	1:C:189:ILE:HD11	1.91	0.51
1:B:173:HIS:HE1	4:B:379:HOH:O	1.93	0.51
1:B:188:THR:HA	1:B:220:MET:CE	2.41	0.51
1:B:299:ALA:HA	1:B:360:TYR:O	2.10	0.51
1:A:309:PRO:O	1:A:314:LYS:HE3	2.11	0.51
1:C:158:ASN:HD22	1:C:158:ASN:N	2.08	0.51
1:A:153:GLY:HA2	1:B:73:ASN:ND2	2.26	0.51
1:A:312:ALA:CA	1:B:23:LEU:HD13	2.41	0.51
1:B:301:TYR:HE1	1:B:319:THR:HG1	1.58	0.51
1:C:183:MET:CE	1:C:269:TRP:HE3	2.23	0.51
1:A:274:TRP:HB3	1:A:278:HIS:HB2	1.93	0.51
1:A:147:LYS:HE3	1:B:43:GLU:C	2.31	0.50
1:C:304:PRO:HG2	1:C:313:THR:HG23	1.93	0.50
1:B:366:LYS:O	1:B:367:THR:O	2.29	0.50
1:C:166:PHE:CE2	3:C:370:SAH:H2'	2.46	0.50
1:D:187:SER:HB3	1:D:268:LYS:CE	2.42	0.50
1:D:217:VAL:HG11	1:D:266:PHE:CE2	2.47	0.50
1:C:183:MET:HE1	1:C:269:TRP:HE3	1.75	0.50
1:B:265:ILE:HG12	1:B:290:LEU:HD21	1.93	0.50
1:B:274:TRP:HH2	3:B:370:SAH:N7	2.10	0.50
1:C:147:LYS:HB3	4:C:391:HOH:O	2.11	0.50
1:A:59:TYR:HE2	1:A:96:THR:HG1	1.60	0.49
1:A:261:LYS:HE3	1:A:289:ALA:HA	1.92	0.49
1:B:273:ASP:N	1:B:323:MET:HE2	2.26	0.49
1:A:121:ASN:OD1	1:A:122:GLU:O	2.30	0.49
1:C:269:TRP:CZ3	2:C:369:N7I:H3	2.47	0.49
1:B:19:GLU:O	1:B:23:LEU:HG	2.13	0.49
1:D:133:LEU:CD2	2:D:369:N7I:C3	2.89	0.49
1:C:133:LEU:HD22	1:C:179:PHE:HA	1.94	0.49
1:D:18:ASP:OD2	1:D:19:GLU:N	2.46	0.49
1:D:217:VAL:HG11	1:D:266:PHE:HE2	1.78	0.49
1:A:208:VAL:CG2	1:A:231:ILE:HB	2.29	0.49

Continued on next page...

Continued from previous page...

Atom-1	Atom-2	Interatomic distance (Å)	Clash overlap (Å)
1:C:321:ALA:CB	1:D:33:VAL:HG11	2.43	0.49
1:D:208:VAL:HG21	1:D:260:PRO:HB2	1.95	0.49
1:D:351:LYS:HE3	1:D:353:ALA:CB	2.37	0.49
1:A:158:ASN:N	1:A:158:ASN:HD22	2.10	0.48
1:D:187:SER:HB3	1:D:268:LYS:HE2	1.94	0.48
1:C:34:LEU:HB3	1:C:35:PRO:HD2	1.95	0.48
1:D:274:TRP:HB3	1:D:278:HIS:HB2	1.95	0.48
1:B:204:LEU:HD13	1:B:207:ILE:HD13	1.96	0.48
1:C:272:HIS:CB	1:C:300:GLU:OE1	2.57	0.48
1:D:34:LEU:HB3	1:D:35:PRO:HD3	1.96	0.48
1:B:321:ALA:O	1:B:324:LEU:HB3	2.13	0.48
1:C:35:PRO:HG3	1:D:31:ALA:HB3	1.95	0.48
1:B:145:TYR:O	1:B:148:ASP:HB2	2.14	0.48
1:C:164:ASN:CG	4:C:394:HOH:O	2.52	0.48
1:A:188:THR:HA	1:A:220:MET:CE	2.43	0.47
1:A:323:MET:O	1:A:327:ASN:CB	2.58	0.47
1:B:275:SER:OG	1:B:278:HIS:HD2	1.98	0.47
2:D:369:N7I:H6	2:D:369:N7I:H9	1.40	0.47
1:A:55:PRO:O	1:A:58:GLY:N	2.47	0.47
1:A:102:SER:OG	1:A:104:LYS:HG3	2.14	0.47
1:B:268:LYS:O	3:B:370:SAH:OXT	2.32	0.47
1:A:90:TYR:CZ	1:B:314:LYS:HD3	2.48	0.47
1:A:191:MET:HG3	1:A:217:VAL:HG13	1.96	0.47
1:A:355:CYS:HA	1:A:359:THR:O	2.15	0.47
1:C:269:TRP:O	1:C:273:ASP:OD1	2.32	0.47
1:D:234:ASP:O	1:D:252:GLY:HA2	2.15	0.47
1:D:313:THR:O	1:D:317:ILE:HG13	2.15	0.47
1:A:273:ASP:O	1:A:328:PRO:HG2	2.15	0.47
1:B:188:THR:HA	1:B:220:MET:HE1	1.97	0.47
1:B:234:ASP:O	1:B:252:GLY:HA2	2.15	0.47
1:C:274:TRP:HB3	1:C:278:HIS:HB2	1.97	0.47
1:C:282:LEU:HD23	1:C:282:LEU:O	2.14	0.47
1:A:73:ASN:C	1:A:75:GLU:H	2.18	0.46
1:C:255:MET:HB2	3:C:370:SAH:N1	2.31	0.46
1:A:158:ASN:O	1:A:161:TYR:O	2.33	0.46
1:A:328:PRO:HD2	2:A:369:N7I:H2	1.97	0.46
1:B:120:LYS:HG2	1:B:124:GLY:C	2.36	0.46
1:B:158:ASN:HD22	1:B:158:ASN:N	2.13	0.46
1:A:272:HIS:O	1:A:323:MET:HE3	2.14	0.46
1:B:48:GLU:OE2	1:B:120:LYS:N	2.27	0.46
1:C:60:ILE:HD11	1:C:64:GLU:HB3	1.98	0.46

Continued on next page...

Continued from previous page...

Atom-1	Atom-2	Interatomic distance (Å)	Clash overlap (Å)
1:D:112:ALA:HB1	1:D:113:PRO:HD2	1.97	0.46
1:C:128:ALA:HB3	1:C:129:PRO:HD3	1.97	0.46
1:D:120:LYS:HG2	1:D:124:GLY:C	2.36	0.46
1:A:187:SER:OG	1:A:268:LYS:CE	2.63	0.46
1:A:319:THR:O	1:A:323:MET:HG2	2.15	0.46
1:B:212:GLY:HA3	1:B:232:ASN:ND2	2.31	0.46
1:B:312:ALA:HB1	1:B:358:ASN:OD1	2.16	0.46
1:C:59:TYR:CZ	1:C:96:THR:HG23	2.51	0.46
1:D:119:THR:O	1:D:126:SER:HB3	2.15	0.46
1:A:275:SER:HA	1:A:329:GLY:O	2.16	0.46
1:B:212:GLY:HA3	1:B:232:ASN:HD21	1.80	0.46
1:D:34:LEU:HB3	1:D:35:PRO:CD	2.46	0.46
1:C:44:LEU:O	1:C:45:ASP:CB	2.63	0.46
1:B:44:LEU:O	1:B:45:ASP:HB2	2.15	0.45
1:D:296:VAL:HG13	1:D:364:PHE:HB2	1.95	0.45
1:A:30:SER:OG	1:B:322:LEU:HD11	2.16	0.45
1:B:237:HIS:CE1	1:B:238:VAL:HG13	2.51	0.45
1:A:255:MET:HB3	1:A:255:MET:HE2	1.57	0.45
1:A:33:VAL:HG13	1:B:143:TRP:CH2	2.52	0.45
1:A:193:LYS:CE	1:B:15:HIS:ND1	2.72	0.45
1:A:54:VAL:HG13	1:A:55:PRO:O	2.16	0.45
1:A:73:ASN:O	1:A:74:PRO:C	2.54	0.45
1:B:183:MET:CE	1:B:269:TRP:HZ3	2.30	0.45
1:D:225:TYR:O	1:D:228:ILE:HG22	2.15	0.45
1:C:46:VAL:O	1:C:50:MET:HG3	2.15	0.45
1:D:42:ILE:CD1	1:D:131:LEU:HD22	2.38	0.45
1:A:301:TYR:HB3	1:A:316:VAL:CG1	2.47	0.45
1:B:121:ASN:HD22	1:B:121:ASN:HA	1.49	0.45
1:A:133:LEU:HD11	1:A:179:PHE:HA	1.95	0.44
1:D:201:PHE:HA	1:D:204:LEU:HD12	1.98	0.44
1:C:309:PRO:HA	1:C:314:LYS:HE3	2.00	0.44
1:D:130:PHE:CZ	2:D:369:N7I:H8	2.52	0.44
1:B:80:LEU:O	1:B:84:LEU:HG	2.17	0.44
1:B:134:ALA:CB	2:B:369:N7I:H10	2.48	0.44
1:C:272:HIS:O	1:C:323:MET:SD	2.75	0.44
1:A:59:TYR:HB3	1:A:109:TYR:O	2.17	0.44
1:A:312:ALA:HB2	1:B:23:LEU:CD1	2.47	0.44
1:C:208:VAL:HG23	1:C:231:ILE:HB	1.98	0.44
1:D:255:MET:HB3	1:D:255:MET:HE2	1.85	0.44
1:A:254:ASP:OD2	1:A:254:ASP:C	2.55	0.44
1:C:116:LYS:O	1:C:121:ASN:ND2	2.44	0.44

Continued on next page...

Continued from previous page...

Atom-1	Atom-2	Interatomic distance (Å)	Clash overlap (Å)
1:A:53:SER:O	1:A:54:VAL:CB	2.64	0.43
1:A:323:MET:SD	2:A:369:N7I:H2A	2.58	0.43
1:A:326:TYR:HD2	2:A:369:N7I:H6	1.81	0.43
1:B:343:MET:C	1:B:345:SER:H	2.21	0.43
1:B:350:PHE:HA	1:B:363:GLU:O	2.17	0.43
1:B:273:ASP:OD2	1:B:323:MET:HE1	2.17	0.43
1:B:302:ILE:HG13	1:B:360:TYR:CD1	2.53	0.43
1:A:46:VAL:O	1:A:47:LEU:HD23	2.19	0.43
1:D:367:THR:HG21	4:D:401:HOH:O	2.17	0.43
1:A:155:ILE:HD13	1:A:327:ASN:O	2.18	0.43
1:D:215:GLY:HA2	1:D:232:ASN:ND2	2.33	0.43
1:A:45:ASP:CG	1:A:45:ASP:O	2.57	0.43
1:A:269:TRP:CD1	1:A:272:HIS:NE2	2.80	0.43
1:A:343:MET:HG2	1:D:9:ILE:CB	2.47	0.43
1:B:319:THR:CG2	4:B:375:HOH:O	2.34	0.43
1:C:208:VAL:HG13	1:C:265:ILE:HG12	2.01	0.43
1:D:191:MET:O	1:D:195:LEU:HD23	2.18	0.42
1:D:292:ASP:O	1:D:366:LYS:HB3	2.20	0.42
1:B:12:ILE:HG22	1:B:13:PRO:N	2.35	0.42
1:D:13:PRO:C	1:D:14:THR:CG2	2.87	0.42
1:D:60:ILE:HG12	1:D:109:TYR:O	2.19	0.42
1:A:165:ILE:HD12	1:A:326:TYR:HB3	2.01	0.42
1:D:271:CYS:HB2	1:D:300:GLU:OE2	2.18	0.42
2:B:369:N7I:H9	2:B:369:N7I:H6	1.39	0.42
1:C:126:SER:O	1:C:185:SER:HB3	2.18	0.42
1:A:58:GLY:C	1:A:59:TYR:HD1	2.20	0.42
1:C:279:CYS:SG	1:C:333:ARG:NH1	2.92	0.42
1:A:256:PHE:HB3	1:A:281:LYS:HD3	2.01	0.42
1:A:51:ALA:HA	1:A:111:LEU:HD11	2.02	0.42
1:A:126:SER:O	1:A:185:SER:HB3	2.20	0.42
1:A:326:TYR:CD2	2:A:369:N7I:H6	2.54	0.42
1:B:301:TYR:HB3	1:B:316:VAL:CG2	2.49	0.42
1:D:38:LEU:HG	1:D:131:LEU:HD21	2.02	0.42
1:D:301:TYR:HE1	1:D:319:THR:HG21	1.83	0.42
1:C:321:ALA:HB3	1:D:33:VAL:HG11	2.02	0.42
1:B:294:GLY:O	1:B:366:LYS:HG3	2.20	0.41
1:A:195:LEU:HD13	1:A:224:LYS:HG3	2.02	0.41
1:A:53:SER:O	1:A:54:VAL:HB	2.21	0.41
1:A:102:SER:OG	1:A:104:LYS:HE3	2.20	0.41
1:D:116:LYS:O	1:D:121:ASN:OD1	2.38	0.41
1:D:152:GLU:HG3	1:D:159:LYS:HE3	2.02	0.41

Continued on next page...

Continued from previous page...

Atom-1	Atom-2	Interatomic distance (Å)	Clash overlap (Å)
1:D:191:MET:O	1:D:195:LEU:CD2	2.69	0.41
2:A:369:N7I:O2	2:A:369:N7I:C2	2.65	0.41
1:C:137:LYS:HE3	1:D:141:GLU:OE2	2.20	0.41
1:D:51:ALA:CA	1:D:111:LEU:HD11	2.50	0.41
1:B:52:LYS:C	1:B:53:SER:OG	2.50	0.41
1:D:18:ASP:OD2	1:D:18:ASP:C	2.59	0.41
1:D:157:PHE:CE1	1:D:165:ILE:HA	2.55	0.41
1:A:47:LEU:N	4:A:408:HOH:O	2.53	0.41
1:D:60:ILE:CD1	1:D:65:ILE:HD11	2.51	0.41
1:A:195:LEU:HD11	1:A:220:MET:HB3	2.03	0.41
1:B:134:ALA:CB	2:B:369:N7I:C10	2.99	0.41
1:B:180:ASN:HD21	1:B:238:VAL:HG12	1.85	0.41
1:B:191:MET:O	1:B:195:LEU:HG	2.20	0.41
1:B:208:VAL:CG1	1:B:265:ILE:CD1	2.99	0.41
1:B:304:PRO:HA	1:B:305:PRO:HD3	1.88	0.41
1:C:85:ARG:HG2	1:D:317:ILE:HD13	2.03	0.41
1:C:235:LEU:HB3	1:C:236:PRO:HD2	2.02	0.41
1:D:133:LEU:HD13	1:D:179:PHE:HA	2.02	0.41
1:A:294:GLY:O	1:A:366:LYS:HG2	2.21	0.40
1:A:328:PRO:HD2	2:A:369:N7I:H2B	2.02	0.40
1:A:157:PHE:CD2	1:A:157:PHE:C	2.95	0.40
1:B:232:ASN:HB3	1:B:250:HIS:ND1	2.37	0.40
1:A:354:SER:HB2	1:A:355:CYS:H	1.70	0.40
1:B:73:ASN:HA	1:B:74:PRO:HD2	1.90	0.40
1:C:233:PHE:HA	1:C:251:LEU:O	2.22	0.40
1:A:100:LEU:HD23	1:A:100:LEU:HA	1.84	0.40
1:A:301:TYR:CB	1:A:316:VAL:HG12	2.51	0.40
1:B:231:ILE:HD13	1:B:249:GLU:HB3	2.03	0.40
1:A:39:LYS:HE2	1:A:43:GLU:OE1	2.22	0.40
1:A:255:MET:HB2	1:A:282:LEU:HD23	2.02	0.40
1:B:141:GLU:N	1:B:142:PRO:CD	2.85	0.40
1:C:211:GLY:O	3:C:370:SAH:OXT	2.40	0.40

There are no symmetry-related clashes.

5.3 Torsion angles [i](#)

5.3.1 Protein backbone [i](#)

In the following table, the Percentiles column shows the percent Ramachandran outliers of the chain as a percentile score with respect to all X-ray entries followed by that with respect to entries

of similar resolution.

The Analysed column shows the number of residues for which the backbone conformation was analysed, and the total number of residues.

Mol	Chain	Analysed	Favoured	Allowed	Outliers	Percentiles	
1	A	350/368 (95%)	337 (96%)	10 (3%)	3 (1%)	17	29
1	B	343/368 (93%)	326 (95%)	17 (5%)	0	100	100
1	C	350/368 (95%)	340 (97%)	9 (3%)	1 (0%)	41	59
1	D	342/368 (93%)	333 (97%)	9 (3%)	0	100	100
All	All	1385/1472 (94%)	1336 (96%)	45 (3%)	4 (0%)	41	59

All (4) Ramachandran outliers are listed below:

Mol	Chain	Res	Type
1	A	54	VAL
1	C	255	MET
1	A	328	PRO
1	A	46	VAL

5.3.2 Protein sidechains [i](#)

In the following table, the Percentiles column shows the percent sidechain outliers of the chain as a percentile score with respect to all X-ray entries followed by that with respect to entries of similar resolution.

The Analysed column shows the number of residues for which the sidechain conformation was analysed, and the total number of residues.

Mol	Chain	Analysed	Rotameric	Outliers	Percentiles	
1	A	290/302 (96%)	284 (98%)	6 (2%)	53	76
1	B	288/302 (95%)	279 (97%)	9 (3%)	40	64
1	C	290/302 (96%)	279 (96%)	11 (4%)	33	56
1	D	287/302 (95%)	273 (95%)	14 (5%)	25	44
All	All	1155/1208 (96%)	1115 (96%)	40 (4%)	36	59

All (40) residues with a non-rotameric sidechain are listed below:

Mol	Chain	Res	Type
1	A	16	SER
1	A	30	SER

Continued on next page...

Continued from previous page...

Mol	Chain	Res	Type
1	A	59	TYR
1	A	91	SER
1	A	158	ASN
1	A	269	TRP
1	B	19	GLU
1	B	33	VAL
1	B	45	ASP
1	B	123	ASP
1	B	158	ASN
1	B	205	THR
1	B	229	ASN
1	B	259	VAL
1	B	341	LEU
1	C	46	VAL
1	C	57	SER
1	C	64	GLU
1	C	108	LEU
1	C	122	GLU
1	C	158	ASN
1	C	165	ILE
1	C	171	THR
1	C	269	TRP
1	C	272	HIS
1	C	273	ASP
1	D	14	THR
1	D	16	SER
1	D	17	SER
1	D	45	ASP
1	D	52	LYS
1	D	122	GLU
1	D	123	ASP
1	D	164	ASN
1	D	188	THR
1	D	310	SER
1	D	316	VAL
1	D	358	ASN
1	D	365	LEU
1	D	366	LYS

Sometimes sidechains can be flipped to improve hydrogen bonding and reduce clashes. All (25) such sidechains are listed below:

Mol	Chain	Res	Type
1	A	158	ASN
1	A	169	HIS
1	A	232	ASN
1	A	272	HIS
1	A	278	HIS
1	B	121	ASN
1	B	158	ASN
1	B	173	HIS
1	B	229	ASN
1	B	232	ASN
1	B	278	HIS
1	B	327	ASN
1	C	158	ASN
1	C	169	HIS
1	C	232	ASN
1	C	250	HIS
1	C	272	HIS
1	C	278	HIS
1	C	327	ASN
1	D	27	GLN
1	D	158	ASN
1	D	169	HIS
1	D	232	ASN
1	D	272	HIS
1	D	278	HIS

5.3.3 RNA [i](#)

There are no RNA molecules in this entry.

5.4 Non-standard residues in protein, DNA, RNA chains [i](#)

There are no non-standard protein/DNA/RNA residues in this entry.

5.5 Carbohydrates [i](#)

There are no monosaccharides in this entry.

5.6 Ligand geometry [i](#)

8 ligands are modelled in this entry.

In the following table, the Counts columns list the number of bonds (or angles) for which Mogul statistics could be retrieved, the number of bonds (or angles) that are observed in the model and the number of bonds (or angles) that are defined in the Chemical Component Dictionary. The Link column lists molecule types, if any, to which the group is linked. The Z score for a bond length (or angle) is the number of standard deviations the observed value is removed from the expected value. A bond length (or angle) with $|Z| > 2$ is considered an outlier worth inspection. RMSZ is the root-mean-square of all Z scores of the bond lengths (or angles).

Mol	Type	Chain	Res	Link	Bond lengths			Bond angles		
					Counts	RMSZ	# Z > 2	Counts	RMSZ	# Z > 2
3	SAH	D	370	-	24,28,28	1.25	4 (16%)	25,40,40	1.49	5 (20%)
2	N7I	D	369	-	13,13,13	0.60	0	16,16,16	2.64	4 (25%)
2	N7I	A	369	-	13,13,13	0.79	0	16,16,16	1.32	2 (12%)
2	N7I	B	369	-	13,13,13	0.61	0	16,16,16	2.64	4 (25%)
3	SAH	B	370	-	24,28,28	1.18	3 (12%)	25,40,40	1.73	5 (20%)
3	SAH	C	370	-	24,28,28	1.35	3 (12%)	25,40,40	1.50	5 (20%)
2	N7I	C	369	-	13,13,13	0.57	0	16,16,16	1.92	4 (25%)
3	SAH	A	370	-	24,28,28	1.00	2 (8%)	25,40,40	1.99	7 (28%)

In the following table, the Chirals column lists the number of chiral outliers, the number of chiral centers analysed, the number of these observed in the model and the number defined in the Chemical Component Dictionary. Similar counts are reported in the Torsion and Rings columns. '-' means no outliers of that kind were identified.

Mol	Type	Chain	Res	Link	Chirals	Torsions	Rings
3	SAH	D	370	-	-	3/11/31/31	0/3/3/3
2	N7I	D	369	-	-	2/6/6/6	0/1/1/1
2	N7I	A	369	-	-	4/6/6/6	0/1/1/1
2	N7I	B	369	-	-	2/6/6/6	0/1/1/1
3	SAH	B	370	-	-	3/11/31/31	0/3/3/3
3	SAH	C	370	-	-	2/11/31/31	0/3/3/3
2	N7I	C	369	-	-	1/6/6/6	0/1/1/1
3	SAH	A	370	-	-	5/11/31/31	0/3/3/3

All (12) bond length outliers are listed below:

Mol	Chain	Res	Type	Atoms	Z	Observed(Å)	Ideal(Å)
3	B	370	SAH	O4'-C1'	2.94	1.45	1.41
3	C	370	SAH	C5-C4	2.79	1.48	1.40
3	D	370	SAH	C5-C4	2.64	1.47	1.40
3	D	370	SAH	C2-N3	2.62	1.36	1.32

Continued on next page...

Continued from previous page...

Mol	Chain	Res	Type	Atoms	Z	Observed(Å)	Ideal(Å)
3	C	370	SAH	O4'-C1'	2.62	1.44	1.41
3	D	370	SAH	OXT-C	-2.47	1.22	1.30
3	B	370	SAH	C2-N3	2.33	1.35	1.32
3	D	370	SAH	O4'-C1'	2.18	1.44	1.41
3	C	370	SAH	OXT-C	-2.16	1.23	1.30
3	A	370	SAH	OXT-C	-2.15	1.23	1.30
3	A	370	SAH	C5-C4	2.09	1.46	1.40
3	B	370	SAH	OXT-C	-2.07	1.23	1.30

All (36) bond angle outliers are listed below:

Mol	Chain	Res	Type	Atoms	Z	Observed(°)	Ideal(°)
2	D	369	N7I	O3-C5-C4	6.63	124.17	114.57
2	B	369	N7I	O3-C5-C4	6.61	124.14	114.57
2	B	369	N7I	C7-C8-C9	-5.39	113.52	126.99
2	D	369	N7I	C7-C8-C9	-5.36	113.59	126.99
3	A	370	SAH	N3-C2-N1	-4.87	121.07	128.68
2	B	369	N7I	O3-C5-C6	-4.75	115.95	124.12
2	D	369	N7I	O3-C5-C6	-4.74	115.95	124.12
2	C	369	N7I	C10-C9-C8	-4.11	115.89	124.61
3	B	370	SAH	N3-C2-N1	-3.92	122.55	128.68
2	C	369	N7I	O3-C5-C4	3.85	120.15	114.57
3	A	370	SAH	O4'-C1'-C2'	-3.52	101.78	106.93
2	C	369	N7I	C2-O3-C5	3.50	122.81	117.53
3	A	370	SAH	CB-CA-C	-3.29	102.46	110.30
3	C	370	SAH	C4-C5-N7	-3.26	106.00	109.40
3	B	370	SAH	OXT-C-O	-3.20	116.83	124.09
3	A	370	SAH	OXT-C-O	-3.13	116.98	124.09
3	A	370	SAH	C2-N1-C6	3.04	123.95	118.75
3	B	370	SAH	O3'-C3'-C4'	-3.01	102.34	111.05
3	D	370	SAH	N3-C2-N1	-3.00	123.99	128.68
2	A	369	N7I	C10-C9-C8	-2.96	118.32	124.61
3	A	370	SAH	OXT-C-CA	2.96	123.47	113.38
3	C	370	SAH	OXT-C-O	-2.93	117.43	124.09
3	D	370	SAH	OXT-C-O	-2.73	117.88	124.09
3	B	370	SAH	O4'-C1'-C2'	-2.64	103.07	106.93
3	C	370	SAH	N3-C2-N1	-2.49	124.79	128.68
3	D	370	SAH	C4-C5-N7	-2.38	106.92	109.40
3	D	370	SAH	CB-CA-C	-2.38	104.64	110.30
2	D	369	N7I	C6-C7-C8	-2.35	113.59	120.60
2	B	369	N7I	C6-C7-C8	-2.35	113.61	120.60
3	D	370	SAH	OXT-C-CA	2.33	121.31	113.38

Continued on next page...

Continued from previous page...

Mol	Chain	Res	Type	Atoms	Z	Observed(°)	Ideal(°)
2	C	369	N7I	O3-C5-C6	-2.30	120.17	124.12
3	A	370	SAH	O3'-C3'-C4'	-2.25	104.54	111.05
3	C	370	SAH	CB-CA-C	-2.22	105.03	110.30
3	B	370	SAH	C4-C5-N7	-2.20	107.11	109.40
3	C	370	SAH	O4'-C1'-C2'	-2.12	103.83	106.93
2	A	369	N7I	C2-O3-C5	2.08	120.68	117.53

There are no chirality outliers.

All (22) torsion outliers are listed below:

Mol	Chain	Res	Type	Atoms
3	A	370	SAH	C-CA-CB-CG
3	B	370	SAH	N-CA-CB-CG
3	B	370	SAH	C-CA-CB-CG
3	C	370	SAH	N-CA-CB-CG
3	C	370	SAH	C-CA-CB-CG
3	D	370	SAH	N-CA-CB-CG
3	D	370	SAH	C-CA-CB-CG
2	A	369	N7I	C6-C5-O3-C2
2	A	369	N7I	C4-C5-O3-C2
2	A	369	N7I	C1-C7-C8-C9
2	A	369	N7I	C6-C7-C8-C9
2	B	369	N7I	C4-C5-O3-C2
2	D	369	N7I	C4-C5-O3-C2
3	A	370	SAH	N-CA-CB-CG
2	B	369	N7I	C6-C5-O3-C2
2	D	369	N7I	C6-C5-O3-C2
3	B	370	SAH	CB-CG-SD-C5'
3	D	370	SAH	CB-CG-SD-C5'
3	A	370	SAH	OXT-C-CA-N
3	A	370	SAH	CB-CG-SD-C5'
3	A	370	SAH	CA-CB-CG-SD
2	C	369	N7I	C4-C5-O3-C2

There are no ring outliers.

6 monomers are involved in 39 short contacts:

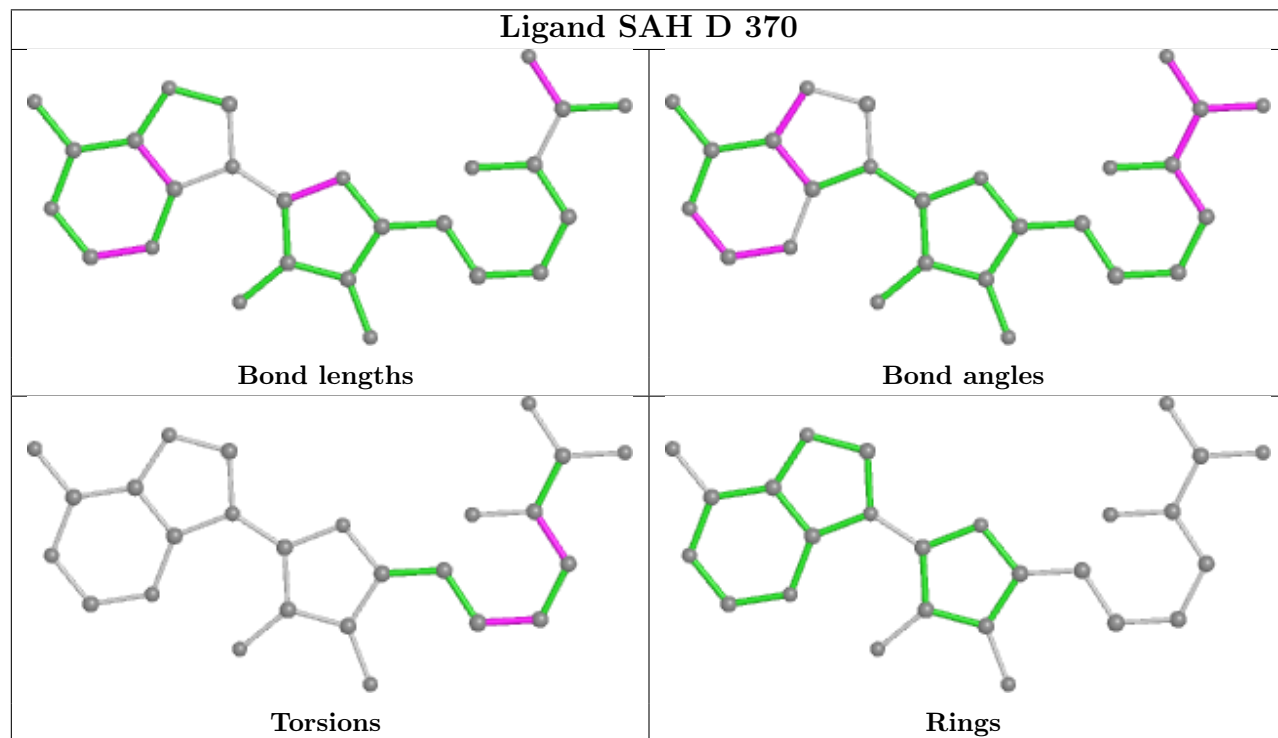
Mol	Chain	Res	Type	Clashes	Symm-Clashes
2	D	369	N7I	7	0
2	A	369	N7I	14	0
2	B	369	N7I	7	0

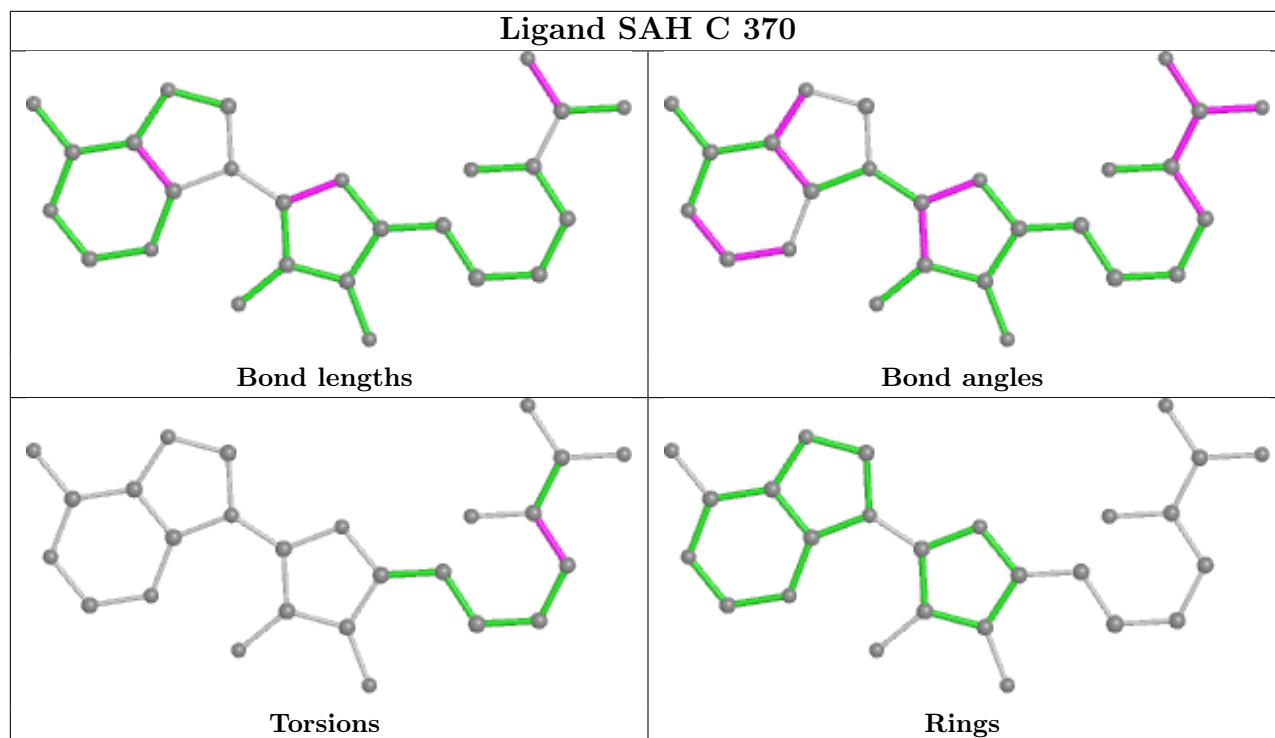
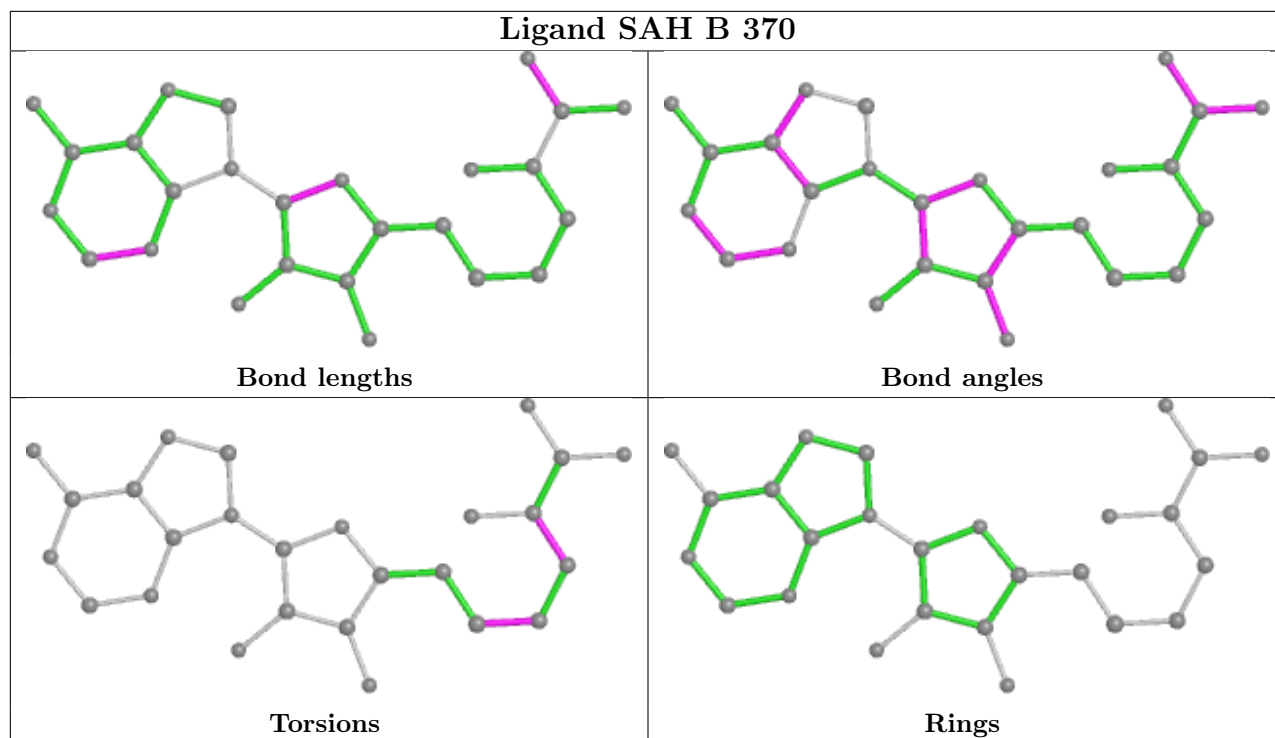
Continued on next page...

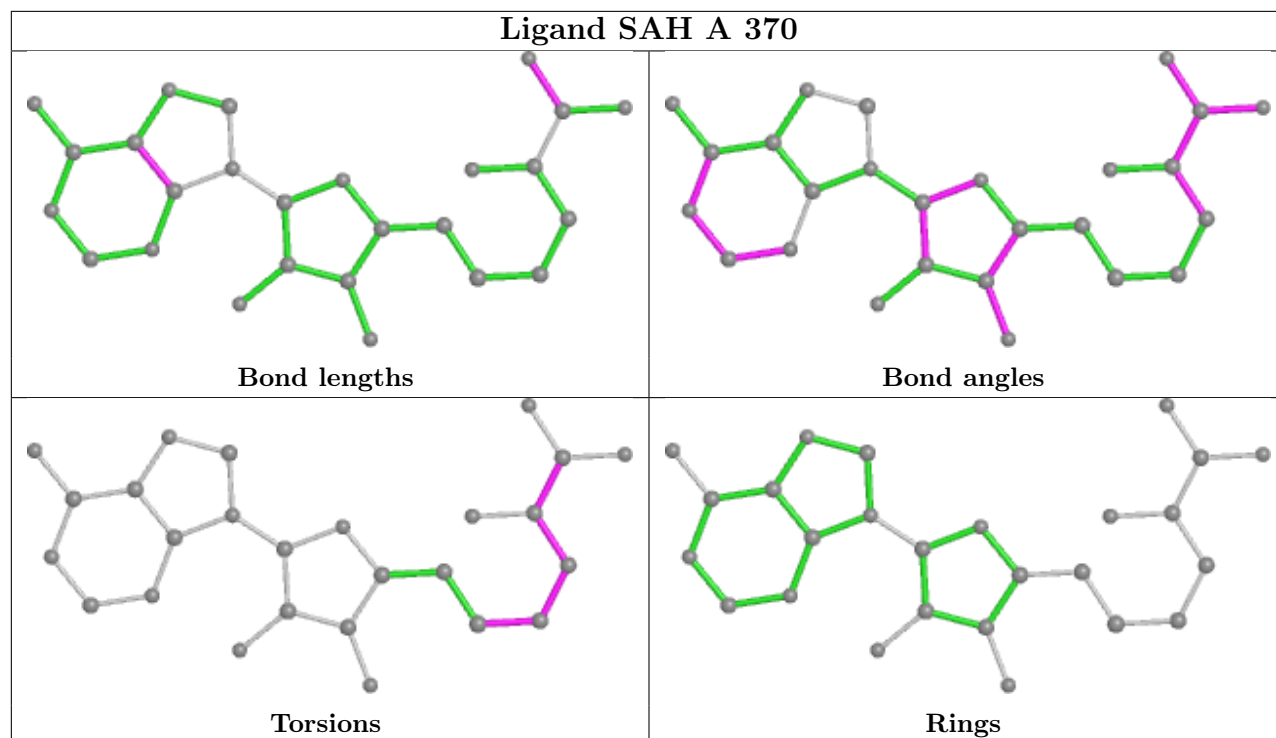
Continued from previous page...

Mol	Chain	Res	Type	Clashes	Symm-Clashes
3	B	370	SAH	2	0
3	C	370	SAH	3	0
2	C	369	N7I	6	0

The following is a two-dimensional graphical depiction of Mogul quality analysis of bond lengths, bond angles, torsion angles, and ring geometry for all instances of the Ligand of Interest. In addition, ligands with molecular weight > 250 and outliers as shown on the validation Tables will also be included. For torsion angles, if less than 5% of the Mogul distribution of torsion angles is within 10 degrees of the torsion angle in question, then that torsion angle is considered an outlier. Any bond that is central to one or more torsion angles identified as an outlier by Mogul will be highlighted in the graph. For rings, the root-mean-square deviation (RMSD) between the ring in question and similar rings identified by Mogul is calculated over all ring torsion angles. If the average RMSD is greater than 60 degrees and the minimal RMSD between the ring in question and any Mogul-identified rings is also greater than 60 degrees, then that ring is considered an outlier. The outliers are highlighted in purple. The color gray indicates Mogul did not find sufficient equivalents in the CSD to analyse the geometry.







5.7 Other polymers [i](#)

There are no such residues in this entry.

5.8 Polymer linkage issues [i](#)

There are no chain breaks in this entry.

6 Fit of model and data

6.1 Protein, DNA and RNA chains

In the following table, the column labelled ‘#RSRZ > 2’ contains the number (and percentage) of RSRZ outliers, followed by percent RSRZ outliers for the chain as percentile scores relative to all X-ray entries and entries of similar resolution. The OWAB column contains the minimum, median, 95th percentile and maximum values of the occupancy-weighted average B-factor per residue. The column labelled ‘Q < 0.9’ lists the number of (and percentage) of residues with an average occupancy less than 0.9.

Mol	Chain	Analysed	<RSRZ>	#RSRZ>2	OWAB(Å ²)	Q<0.9
1	A	352/368 (95%)	0.13	17 (4%) 30 32	6, 21, 36, 58	0
1	B	349/368 (94%)	0.12	15 (4%) 35 37	6, 19, 36, 48	0
1	C	352/368 (95%)	-0.04	11 (3%) 49 51	9, 18, 34, 45	0
1	D	348/368 (94%)	0.03	9 (2%) 56 58	7, 20, 34, 48	0
All	All	1401/1472 (95%)	0.06	52 (3%) 41 44	6, 19, 35, 58	0

All (52) RSRZ outliers are listed below:

Mol	Chain	Res	Type	RSRZ
1	C	16	SER	6.0
1	A	57	SER	5.8
1	A	59	TYR	5.3
1	B	122	GLU	4.4
1	B	9	ILE	4.4
1	C	121	ASN	4.3
1	D	121	ASN	4.0
1	B	121	ASN	3.8
1	B	54	VAL	3.7
1	A	45	ASP	3.7
1	A	327	ASN	3.6
1	A	55	PRO	3.6
1	B	246	SER	3.4
1	A	125	VAL	3.3
1	A	17	SER	3.2
1	B	123	ASP	3.2
1	C	56	PRO	3.2
1	B	227	SER	3.1
1	A	96	THR	3.0
1	C	17	SER	3.0
1	D	98	ARG	3.0

Continued on next page...

Continued from previous page...

Mol	Chain	Res	Type	RSRZ
1	A	328	PRO	2.9
1	A	56	PRO	2.9
1	B	245	PHE	2.9
1	C	207	ILE	2.9
1	C	273	ASP	2.8
1	B	226	PRO	2.8
1	A	72	THR	2.8
1	A	53	SER	2.7
1	D	173	HIS	2.7
1	A	122	GLU	2.6
1	C	205	THR	2.6
1	B	10	GLN	2.6
1	B	305	PRO	2.5
1	D	60	ILE	2.5
1	A	60	ILE	2.5
1	D	367	THR	2.5
1	C	272	HIS	2.5
1	D	292	ASP	2.4
1	A	54	VAL	2.4
1	D	58	GLY	2.3
1	D	106	GLU	2.3
1	C	58	GLY	2.3
1	A	329	GLY	2.3
1	A	224	LYS	2.2
1	D	305	PRO	2.2
1	C	122	GLU	2.1
1	B	358	ASN	2.1
1	B	269	TRP	2.1
1	C	274	TRP	2.0
1	B	197	MET	2.0
1	B	12	ILE	2.0

6.2 Non-standard residues in protein, DNA, RNA chains [i](#)

There are no non-standard protein/DNA/RNA residues in this entry.

6.3 Carbohydrates [i](#)

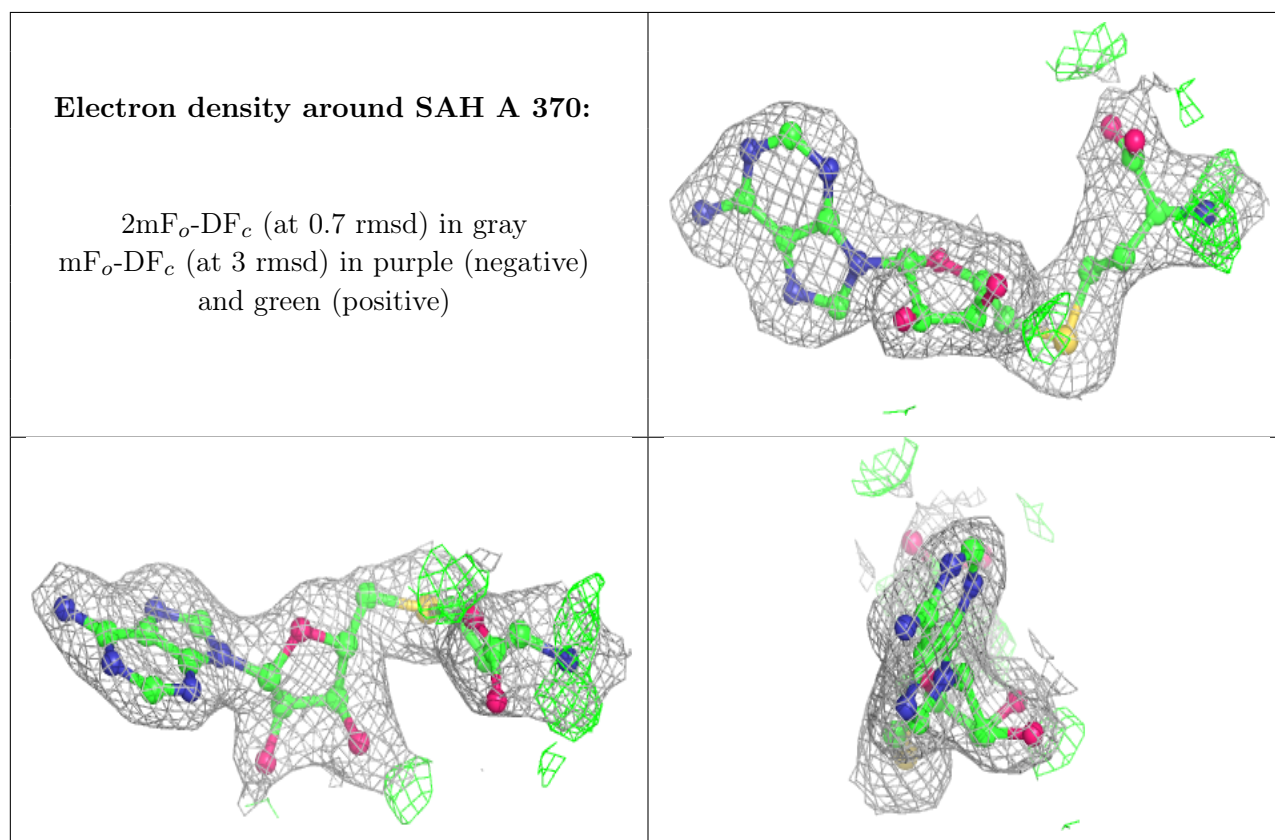
There are no monosaccharides in this entry.

6.4 Ligands [i](#)

In the following table, the Atoms column lists the number of modelled atoms in the group and the number defined in the chemical component dictionary. The B-factors column lists the minimum, median, 95th percentile and maximum values of B factors of atoms in the group. The column labelled 'Q< 0.9' lists the number of atoms with occupancy less than 0.9.

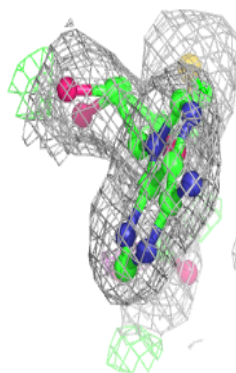
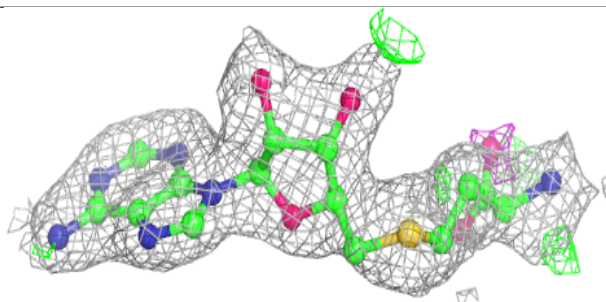
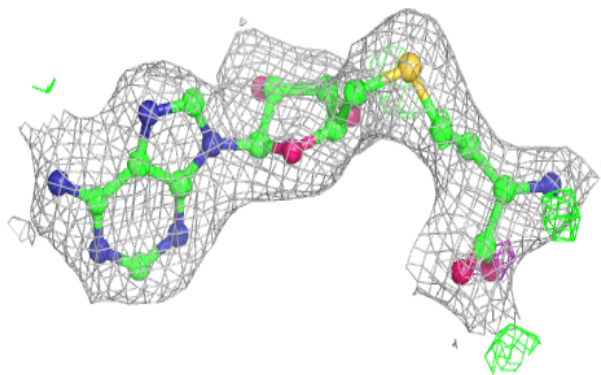
Mol	Type	Chain	Res	Atoms	RSCC	RSR	B-factors(Å ²)	Q<0.9
2	N7I	C	369	13/13	0.46	0.48	67,70,72,73	0
2	N7I	D	369	13/13	0.54	0.54	78,79,80,80	0
2	N7I	A	369	13/13	0.63	0.42	52,59,61,62	0
2	N7I	B	369	13/13	0.67	0.44	78,79,80,80	0
3	SAH	A	370	26/26	0.91	0.17	10,18,27,29	0
3	SAH	D	370	26/26	0.92	0.15	16,20,30,32	0
3	SAH	B	370	26/26	0.93	0.17	11,15,32,34	0
3	SAH	C	370	26/26	0.94	0.15	5,12,22,25	0

The following is a graphical depiction of the model fit to experimental electron density of all instances of the Ligand of Interest. In addition, ligands with molecular weight > 250 and outliers as shown on the geometry validation Tables will also be included. Each fit is shown from different orientation to approximate a three-dimensional view.

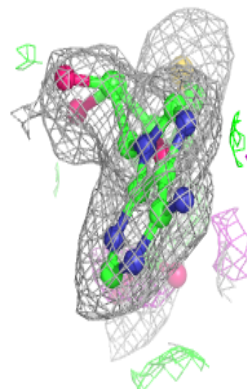
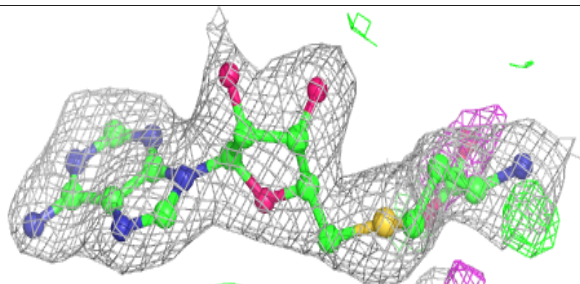
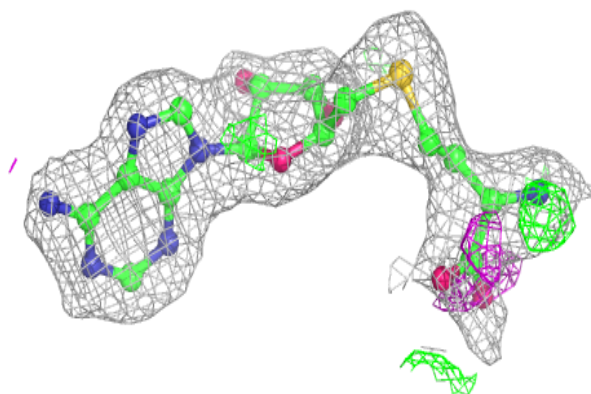


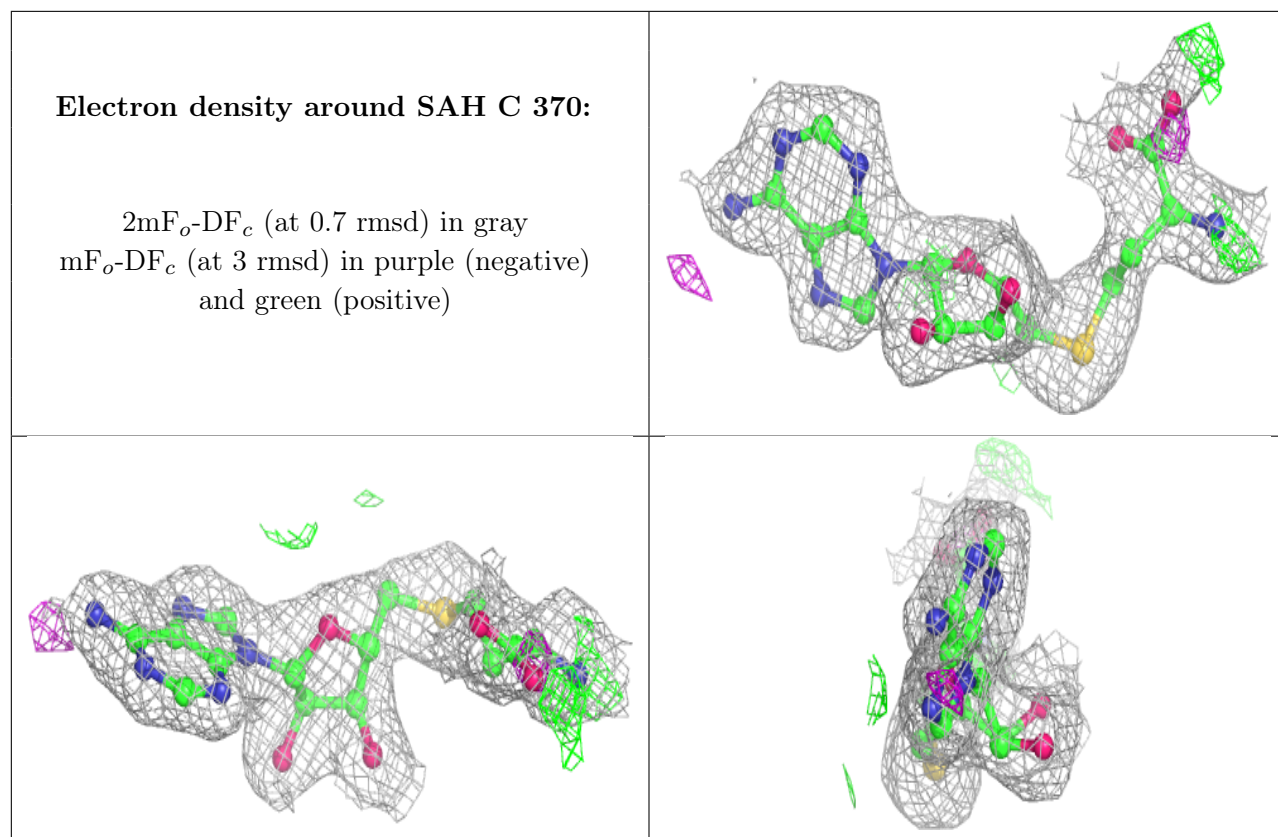
Electron density around SAH D 370:

$2mF_o-DF_c$ (at 0.7 rmsd) in gray
 mF_o-DF_c (at 3 rmsd) in purple (negative)
and green (positive)

**Electron density around SAH B 370:**

$2mF_o-DF_c$ (at 0.7 rmsd) in gray
 mF_o-DF_c (at 3 rmsd) in purple (negative)
and green (positive)





6.5 Other polymers [i](#)

There are no such residues in this entry.