



Full wwPDB X-ray Structure Validation Report ⓘ

Jan 29, 2024 – 10:46 AM EST

PDB ID : 8TBN
Title : Tricomplex of RMC-7977, KRAS G12S, and CypA
Authors : Tomlinson, A.C.A.; Chen, A.; Knox, J.E.; Yano, J.K.
Deposited on : 2023-06-28
Resolution : 1.46 Å(reported)

This is a Full wwPDB X-ray Structure Validation Report for a publicly released PDB entry.

We welcome your comments at validation@mail.wwpdb.org

A user guide is available at

<https://www.wwpdb.org/validation/2017/XrayValidationReportHelp>

with specific help available everywhere you see the ⓘ symbol.

The types of validation reports are described at

<http://www.wwpdb.org/validation/2017/FAQs#types>.

The following versions of software and data (see [references ⓘ](#)) were used in the production of this report:

MolProbity : 4.02b-467
Mogul : 1.8.5 (274361), CSD as541be (2020)
Xtriage (Phenix) : 1.13
EDS : 2.36
buster-report : 1.1.7 (2018)
Percentile statistics : 20191225.v01 (using entries in the PDB archive December 25th 2019)
Refmac : 5.8.0158
CCP4 : 7.0.044 (Gargrove)
Ideal geometry (proteins) : Engh & Huber (2001)
Ideal geometry (DNA, RNA) : Parkinson et al. (1996)
Validation Pipeline (wwPDB-VP) : 2.36

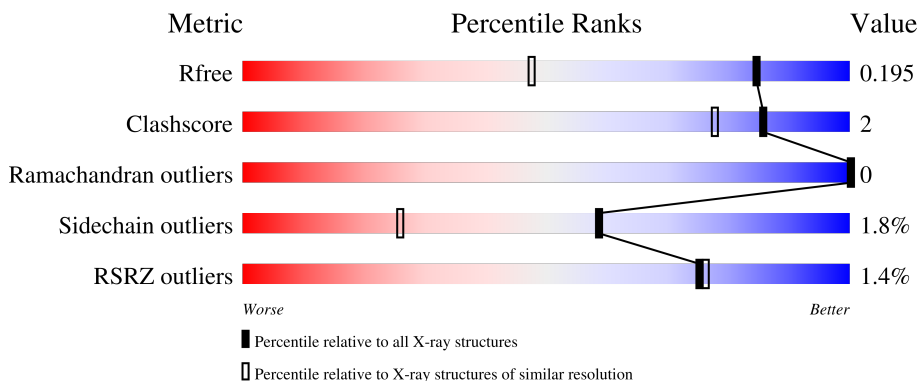
1 Overall quality at a glance

The following experimental techniques were used to determine the structure:

X-RAY DIFFRACTION

The reported resolution of this entry is 1.46 Å.

Percentile scores (ranging between 0-100) for global validation metrics of the entry are shown in the following graphic. The table shows the number of entries on which the scores are based.



Metric	Whole archive (#Entries)	Similar resolution (#Entries, resolution range(Å))
R_{free}	130704	1156 (1.46-1.46)
Clashscore	141614	1202 (1.46-1.46)
Ramachandran outliers	138981	1178 (1.46-1.46)
Sidechain outliers	138945	1178 (1.46-1.46)
RSRZ outliers	127900	1139 (1.46-1.46)

The table below summarises the geometric issues observed across the polymeric chains and their fit to the electron density. The red, orange, yellow and green segments of the lower bar indicate the fraction of residues that contain outliers for ≥ 3 , 2, 1 and 0 types of geometric quality criteria respectively. A grey segment represents the fraction of residues that are not modelled. The numeric value for each fraction is indicated below the corresponding segment, with a dot representing fractions $\leq 5\%$. The upper red bar (where present) indicates the fraction of residues that have poor fit to the electron density. The numeric value is given above the bar.

Mol	Chain	Length	Quality of chain
1	A	170	 91% 8% ..
1	B	170	 4% 90% 10%
2	C	166	 96% ..
2	D	166	 95% ..

The following table lists non-polymeric compounds, carbohydrate monomers and non-standard

residues in protein, DNA, RNA chains that are outliers for geometric or electron-density-fit criteria:

Mol	Type	Chain	Res	Chirality	Geometry	Clashes	Electron density
5	ZNI	C	201	X	-	-	-
5	ZNI	D	201	X	-	-	-

2 Entry composition [i](#)

There are 6 unique types of molecules in this entry. The entry contains 6218 atoms, of which 0 are hydrogens and 0 are deuteriums.

In the tables below, the ZeroOcc column contains the number of atoms modelled with zero occupancy, the AltConf column contains the number of residues with at least one atom in alternate conformation and the Trace column contains the number of residues modelled with at most 2 atoms.

- Molecule 1 is a protein called GTPase KRas.

Mol	Chain	Residues	Atoms					ZeroOcc	AltConf	Trace
			Total	C	N	O	S			
1	A	169	1372	860	233	271	8	0	5	0
1	B	170	1382	865	236	274	7	0	4	0

There are 4 discrepancies between the modelled and reference sequences:

Chain	Residue	Modelled	Actual	Comment	Reference
A	0	SER	-	expression tag	UNP P01116
A	12	SER	GLY	engineered mutation	UNP P01116
B	0	SER	-	expression tag	UNP P01116
B	12	SER	GLY	engineered mutation	UNP P01116

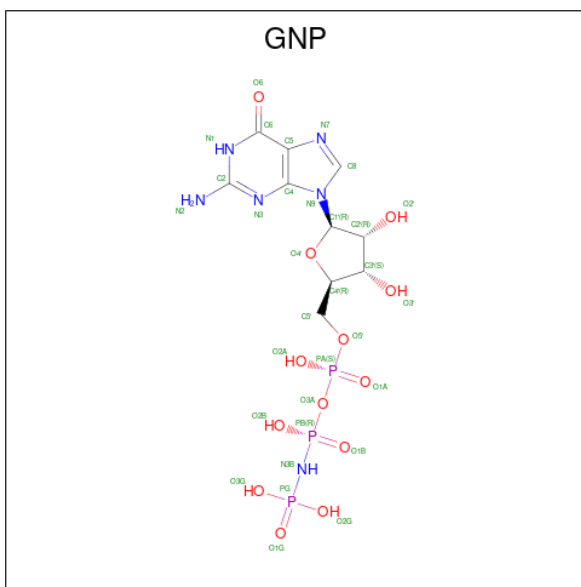
- Molecule 2 is a protein called Peptidyl-prolyl cis-trans isomerase A.

Mol	Chain	Residues	Atoms					ZeroOcc	AltConf	Trace
			Total	C	N	O	S			
2	C	165	1279	811	221	237	10	0	2	0
2	D	162	1249	792	216	232	9	0	1	0

There are 2 discrepancies between the modelled and reference sequences:

Chain	Residue	Modelled	Actual	Comment	Reference
C	0	SER	-	expression tag	UNP P62937
D	0	SER	-	expression tag	UNP P62937

- Molecule 3 is PHOSPHOAMINOPHOSPHONIC ACID-GUANYLATE ESTER (three-letter code: GNP) (formula: C₁₀H₁₇N₆O₁₃P₃).

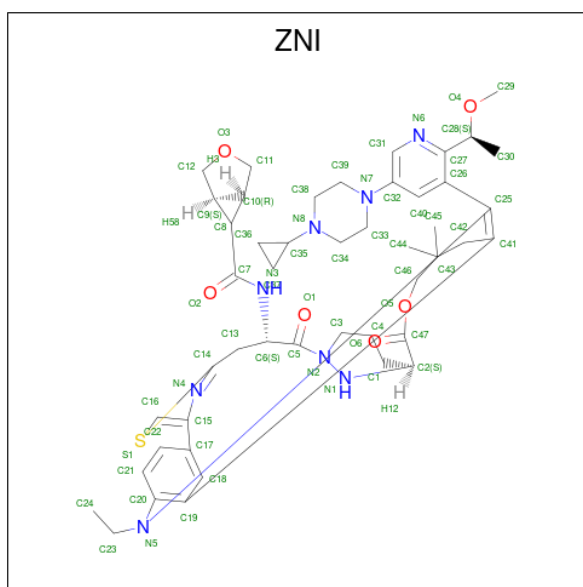


Mol	Chain	Residues	Atoms				ZeroOcc	AltConf	
3	A	1	Total	C	N	O	P	0	0
			32	10	6	13	3		
3	B	1	Total	C	N	O	P	0	0
			32	10	6	13	3		

- Molecule 4 is MAGNESIUM ION (three-letter code: MG) (formula: Mg).

Mol	Chain	Residues	Atoms		ZeroOcc	AltConf
4	A	1	Total	Mg	0	0
			1	1		
4	B	1	Total	Mg	0	0
			1	1		

- Molecule 5 is (1R,5S,6r)-N-[(1P,7S,9S,13S,20M)-20-{5-(4-cyclopropylpiperazin-1-yl)-2-[(1S)-1-methoxyethyl]pyridin-3-yl}-21-ethyl-17,17-dimethyl-8,14-dioxo-15-oxa-4-thia-9,21,27,28-tetraazapentacyclo[17.5.2.1 2,5 .1 9,13 .0 22,26]octacos-1(24),2,5(28),19,22,25-hexaen-7-yl]-3-oxabicyclo[3.1.0]hexane-6-carboxamide (three-letter code: ZNI) (formula: C₄₇H₆₀N₈O₆S) (labeled as "Ligand of Interest" by depositor).



Mol	Chain	Residues	Atoms					ZeroOcc	AltConf
5	C	1	Total	C	N	O	S	0	0
			62	47	8	6	1		
5	D	1	Total	C	N	O	S	0	0
			62	47	8	6	1		

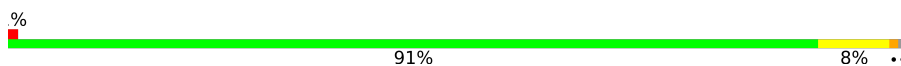
- Molecule 6 is water.

Mol	Chain	Residues	Atoms		ZeroOcc	AltConf
6	A	187	Total	O	0	2
			189	189		
6	B	137	Total	O	0	2
			139	139		
6	C	214	Total	O	0	0
			214	214		
6	D	203	Total	O	0	1
			204	204		

3 Residue-property plots [i](#)

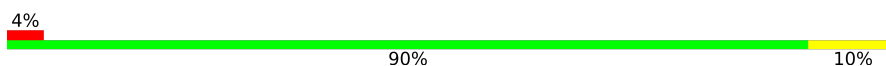
These plots are drawn for all protein, RNA, DNA and oligosaccharide chains in the entry. The first graphic for a chain summarises the proportions of the various outlier classes displayed in the second graphic. The second graphic shows the sequence view annotated by issues in geometry and electron density. Residues are color-coded according to the number of geometric quality criteria for which they contain at least one outlier: green = 0, yellow = 1, orange = 2 and red = 3 or more. A red dot above a residue indicates a poor fit to the electron density ($RSRZ > 2$). Stretches of 2 or more consecutive residues without any outlier are shown as a green connector. Residues present in the sample, but not in the model, are shown in grey.

- Molecule 1: GTPase KRas

Chain A: 



- Molecule 1: GTPase KRas

Chain B: 



- Molecule 2: Peptidyl-prolyl cis-trans isomerase A

Chain C: 



- Molecule 2: Peptidyl-prolyl cis-trans isomerase A

Chain D: 



4 Data and refinement statistics

Property	Value	Source
Space group	P 21 21 21	Depositor
Cell constants a, b, c, α , β , γ	65.78Å 84.34Å 126.63Å 90.00° 90.00° 90.00°	Depositor
Resolution (Å)	35.50 – 1.46 126.63 – 1.46	Depositor EDS
% Data completeness (in resolution range)	98.3 (35.50-1.46) 98.4 (126.63-1.46)	Depositor EDS
R_{merge}	0.09	Depositor
R_{sym}	(Not available)	Depositor
$\langle I/\sigma(I) \rangle$ ¹	1.21 (at 1.46Å)	Xtrriage
Refinement program	PHENIX 1.20.1_4487	Depositor
R, R_{free}	0.153 , 0.197 0.151 , 0.195	Depositor DCC
R_{free} test set	6195 reflections (5.13%)	wwPDB-VP
Wilson B-factor (Å ²)	20.0	Xtrriage
Anisotropy	0.222	Xtrriage
Bulk solvent k_{sol} (e/Å ³), B_{sol} (Å ²)	0.34 , 43.4	EDS
L-test for twinning ²	$\langle L \rangle = 0.50$, $\langle L^2 \rangle = 0.33$	Xtrriage
Estimated twinning fraction	No twinning to report.	Xtrriage
F_o, F_c correlation	0.98	EDS
Total number of atoms	6218	wwPDB-VP
Average B, all atoms (Å ²)	30.0	wwPDB-VP

Xtrriage's analysis on translational NCS is as follows: *The largest off-origin peak in the Patterson function is 4.60% of the height of the origin peak. No significant pseudotranslation is detected.*

¹Intensities estimated from amplitudes.

²Theoretical values of $\langle |L| \rangle$, $\langle L^2 \rangle$ for acentric reflections are 0.5, 0.333 respectively for untwinned datasets, and 0.375, 0.2 for perfectly twinned datasets.

5 Model quality [i](#)

5.1 Standard geometry [i](#)

Bond lengths and bond angles in the following residue types are not validated in this section: GNP, ZNI, MG

The Z score for a bond length (or angle) is the number of standard deviations the observed value is removed from the expected value. A bond length (or angle) with $|Z| > 5$ is considered an outlier worth inspection. RMSZ is the root-mean-square of all Z scores of the bond lengths (or angles).

Mol	Chain	Bond lengths		Bond angles	
		RMSZ	# Z >5	RMSZ	# Z >5
1	A	0.73	0/1405	0.88	0/1894
1	B	0.65	0/1412	0.79	0/1902
2	C	0.80	0/1307	0.87	0/1750
2	D	0.83	0/1277	0.85	0/1711
All	All	0.75	0/5401	0.85	0/7257

There are no bond length outliers.

There are no bond angle outliers.

There are no chirality outliers.

There are no planarity outliers.

5.2 Too-close contacts [i](#)

In the following table, the Non-H and H(model) columns list the number of non-hydrogen atoms and hydrogen atoms in the chain respectively. The H(added) column lists the number of hydrogen atoms added and optimized by MolProbity. The Clashes column lists the number of clashes within the asymmetric unit, whereas Symm-Clashes lists symmetry-related clashes.

Mol	Chain	Non-H	H(model)	H(added)	Clashes	Symm-Clashes
1	A	1372	0	1364	9	0
1	B	1382	0	1370	10	0
2	C	1279	0	1256	4	0
2	D	1249	0	1218	3	0
3	A	32	0	13	0	0
3	B	32	0	13	1	0
4	A	1	0	0	0	0
4	B	1	0	0	0	0
5	C	62	0	0	0	0

Continued on next page...

Continued from previous page...

Mol	Chain	Non-H	H(model)	H(added)	Clashes	Symm-Clashes
5	D	62	0	0	0	0
6	A	189	0	0	1	0
6	B	139	0	0	1	0
6	C	214	0	0	1	0
6	D	204	0	0	1	0
All	All	6218	0	5234	24	0

The all-atom clashscore is defined as the number of clashes found per 1000 atoms (including hydrogen atoms). The all-atom clashscore for this structure is 2.

All (24) close contacts within the same asymmetric unit are listed below, sorted by their clash magnitude.

Atom-1	Atom-2	Interatomic distance (Å)	Clash overlap (Å)
1:A:41:ARG:NH2	1:A:52:LEU:HD21	2.05	0.72
1:B:41:ARG:NH2	1:B:52[B]:LEU:HD21	2.06	0.71
1:A:142[B]:ILE:HD12	1:A:155:ALA:HA	1.80	0.63
2:C:155:LYS:NZ	6:C:301:HOH:O	2.33	0.61
2:D:5:THR:HG22	2:D:164:LEU:HD12	1.85	0.58
1:A:69:ASP:HB3	1:A:73:ARG:NH2	2.19	0.57
1:B:84:ILE:HD12	1:B:123:ARG:HB2	1.90	0.54
1:A:118[B]:CYS:SG	1:A:143:GLU:HB3	2.52	0.50
2:D:144:ARG:NE	6:D:302:HOH:O	2.46	0.48
2:D:5:THR:CG2	2:D:164:LEU:HD12	2.43	0.48
1:B:111:MET:HE3	1:B:111:MET:HB3	1.68	0.47
1:B:31:GLU:HG2	2:C:69:ARG:NH1	2.30	0.47
1:A:69:ASP:HB3	1:A:73:ARG:HH22	1.79	0.46
1:B:88:LYS:NZ	1:B:92:ASP:OD1	2.46	0.46
2:C:31[B]:LYS:HE2	2:C:31[B]:LYS:HB3	1.65	0.44
1:B:99:GLN:HG3	1:B:102:ARG:NH2	2.33	0.44
1:B:117:LYS:HG2	3:B:201:GNP:C6	2.48	0.44
1:A:70:GLN:HG3	6:A:416:HOH:O	2.17	0.43
1:B:93:ILE:HD13	1:B:93:ILE:HA	1.88	0.42
1:A:21:ILE:HD13	1:A:29:VAL:HG21	2.01	0.42
1:A:41:ARG:HH22	2:C:60:PHE:HE2	1.69	0.41
1:A:93:ILE:HD13	1:A:93:ILE:HA	1.81	0.41
1:B:70[B]:GLN:HB3	6:B:356:HOH:O	2.20	0.41
1:B:87:THR:O	1:B:91:GLU:HG2	2.21	0.41

There are no symmetry-related clashes.

5.3 Torsion angles [i](#)

5.3.1 Protein backbone [i](#)

In the following table, the Percentiles column shows the percent Ramachandran outliers of the chain as a percentile score with respect to all X-ray entries followed by that with respect to entries of similar resolution.

The Analysed column shows the number of residues for which the backbone conformation was analysed, and the total number of residues.

Mol	Chain	Analysed	Favoured	Allowed	Outliers	Percentiles	
1	A	172/170 (101%)	167 (97%)	5 (3%)	0	100	100
1	B	172/170 (101%)	168 (98%)	4 (2%)	0	100	100
2	C	165/166 (99%)	161 (98%)	4 (2%)	0	100	100
2	D	161/166 (97%)	156 (97%)	5 (3%)	0	100	100
All	All	670/672 (100%)	652 (97%)	18 (3%)	0	100	100

There are no Ramachandran outliers to report.

5.3.2 Protein sidechains [i](#)

In the following table, the Percentiles column shows the percent sidechain outliers of the chain as a percentile score with respect to all X-ray entries followed by that with respect to entries of similar resolution.

The Analysed column shows the number of residues for which the sidechain conformation was analysed, and the total number of residues.

Mol	Chain	Analysed	Rotameric	Outliers	Percentiles	
1	A	155/151 (103%)	151 (97%)	4 (3%)	46	13
1	B	155/151 (103%)	153 (99%)	2 (1%)	69	40
2	C	135/134 (101%)	132 (98%)	3 (2%)	52	18
2	D	131/134 (98%)	128 (98%)	3 (2%)	50	17
All	All	576/570 (101%)	564 (98%)	12 (2%)	59	19

All (12) residues with a non-rotameric sidechain are listed below:

Mol	Chain	Res	Type
1	A	62	GLU
1	A	71	TYR

Continued on next page...

Continued from previous page...

Mol	Chain	Res	Type
1	A	73	ARG
1	A	97	ARG
1	B	71	TYR
1	B	108	ASP
2	C	29	VAL
2	C	61[A]	MET
2	C	61[B]	MET
2	D	29	VAL
2	D	61[A]	MET
2	D	61[B]	MET

Sometimes sidechains can be flipped to improve hydrogen bonding and reduce clashes. There are no such sidechains identified.

5.3.3 RNA [i](#)

There are no RNA molecules in this entry.

5.4 Non-standard residues in protein, DNA, RNA chains [i](#)

There are no non-standard protein/DNA/RNA residues in this entry.

5.5 Carbohydrates [i](#)

There are no monosaccharides in this entry.

5.6 Ligand geometry [i](#)

Of 6 ligands modelled in this entry, 2 are monoatomic - leaving 4 for Mogul analysis.

In the following table, the Counts columns list the number of bonds (or angles) for which Mogul statistics could be retrieved, the number of bonds (or angles) that are observed in the model and the number of bonds (or angles) that are defined in the Chemical Component Dictionary. The Link column lists molecule types, if any, to which the group is linked. The Z score for a bond length (or angle) is the number of standard deviations the observed value is removed from the expected value. A bond length (or angle) with $|Z| > 2$ is considered an outlier worth inspection. RMSZ is the root-mean-square of all Z scores of the bond lengths (or angles).

Mol	Type	Chain	Res	Link	Bond lengths			Bond angles		
					Counts	RMSZ	# Z > 2	Counts	RMSZ	# Z > 2
5	ZNI	C	201	-	63,71,71	1.07	2 (3%)	65,107,107	1.02	4 (6%)

Mol	Type	Chain	Res	Link	Bond lengths			Bond angles		
					Counts	RMSZ	# Z > 2	Counts	RMSZ	# Z > 2
3	GNP	A	201	4	29,34,34	1.97	5 (17%)	33,54,54	2.16	9 (27%)
3	GNP	B	201	4	29,34,34	1.87	6 (20%)	33,54,54	2.31	11 (33%)
5	ZNI	D	201	-	63,71,71	0.73	0	65,107,107	1.02	2 (3%)

In the following table, the Chirals column lists the number of chiral outliers, the number of chiral centers analysed, the number of these observed in the model and the number defined in the Chemical Component Dictionary. Similar counts are reported in the Torsion and Rings columns. '-' means no outliers of that kind were identified.

Mol	Type	Chain	Res	Link	Chirals	Torsions	Rings
5	ZNI	C	201	-	1/1/14/16	4/55/96/96	0/8/10/10
5	ZNI	D	201	-	1/1/14/16	4/55/96/96	0/8/10/10
3	GNP	B	201	4	-	3/14/38/38	0/3/3/3
3	GNP	A	201	4	-	4/14/38/38	0/3/3/3

All (13) bond length outliers are listed below:

Mol	Chain	Res	Type	Atoms	Z	Observed(Å)	Ideal(Å)
3	A	201	GNP	PB-O3A	6.41	1.67	1.59
3	B	201	GNP	PB-O3A	6.25	1.67	1.59
5	C	201	ZNI	C13-C14	5.90	1.53	1.49
3	A	201	GNP	PB-O2B	-4.47	1.44	1.56
3	A	201	GNP	PB-O1B	4.31	1.53	1.46
3	B	201	GNP	PG-N3B	4.31	1.74	1.63
3	A	201	GNP	PG-N3B	3.88	1.73	1.63
3	B	201	GNP	PG-O1G	3.22	1.51	1.46
3	B	201	GNP	PB-O2B	-3.07	1.48	1.56
5	C	201	ZNI	C42-C43	2.96	1.56	1.55
3	B	201	GNP	C6-N1	2.78	1.37	1.33
3	B	201	GNP	C5-C6	2.12	1.45	1.41
3	A	201	GNP	C6-N1	2.06	1.36	1.33

All (26) bond angle outliers are listed below:

Mol	Chain	Res	Type	Atoms	Z	Observed(°)	Ideal(°)
3	B	201	GNP	C5-C6-N1	-8.17	112.26	123.43
3	A	201	GNP	C5-C6-N1	-7.90	112.63	123.43
3	B	201	GNP	C2-N1-C6	5.77	125.10	115.93
3	A	201	GNP	C2-N1-C6	5.63	124.87	115.93
3	B	201	GNP	O2B-PB-O1B	3.37	116.99	109.92

Continued on next page...

Continued from previous page...

Mol	Chain	Res	Type	Atoms	Z	Observed(°)	Ideal(°)
3	A	201	GNP	O2B-PB-O1B	3.22	116.66	109.92
3	B	201	GNP	O2G-PG-O1G	-2.83	106.33	113.45
3	A	201	GNP	C2-N3-C4	-2.77	112.20	115.36
3	B	201	GNP	O2G-PG-O3G	2.58	114.52	107.64
3	B	201	GNP	N3-C2-N1	-2.55	123.82	127.22
3	A	201	GNP	N3-C2-N1	-2.48	123.91	127.22
3	B	201	GNP	C4-C5-C6	-2.48	118.43	120.80
3	B	201	GNP	O1B-PB-N3B	-2.48	108.12	111.77
3	B	201	GNP	PB-O3A-PA	-2.37	124.28	132.62
3	A	201	GNP	C4-C5-C6	-2.34	118.57	120.80
5	C	201	ZNI	C34-C33-N7	2.27	115.11	110.70
3	B	201	GNP	O2B-PB-O3A	2.26	112.20	104.64
3	B	201	GNP	C2-N3-C4	-2.24	112.80	115.36
5	C	201	ZNI	C16-C15-C17	-2.18	126.40	129.44
5	C	201	ZNI	C39-N7-C33	2.14	116.25	111.52
3	A	201	GNP	PB-O3A-PA	-2.13	125.12	132.62
3	A	201	GNP	C4-C5-N7	2.11	111.60	109.40
5	D	201	ZNI	C22-C21-C20	-2.08	116.50	119.70
5	D	201	ZNI	C16-C15-C17	-2.07	126.56	129.44
5	C	201	ZNI	O3-C12-C9	-2.05	103.53	106.40
3	A	201	GNP	O3A-PB-N3B	-2.02	100.98	106.59

All (2) chirality outliers are listed below:

Mol	Chain	Res	Type	Atom
5	C	201	ZNI	N2
5	D	201	ZNI	N2

All (15) torsion outliers are listed below:

Mol	Chain	Res	Type	Atoms
3	A	201	GNP	PB-N3B-PG-O1G
3	A	201	GNP	PG-N3B-PB-O1B
3	A	201	GNP	PA-O3A-PB-O1B
3	B	201	GNP	PB-N3B-PG-O1G
3	B	201	GNP	PG-N3B-PB-O1B
5	C	201	ZNI	C26-C27-C28-C30
5	C	201	ZNI	C27-C28-O4-C29
5	D	201	ZNI	C26-C27-C28-C30
5	D	201	ZNI	C27-C28-O4-C29
5	D	201	ZNI	C14-C13-C6-C5
5	C	201	ZNI	C14-C13-C6-C5

Continued on next page...

Continued from previous page...

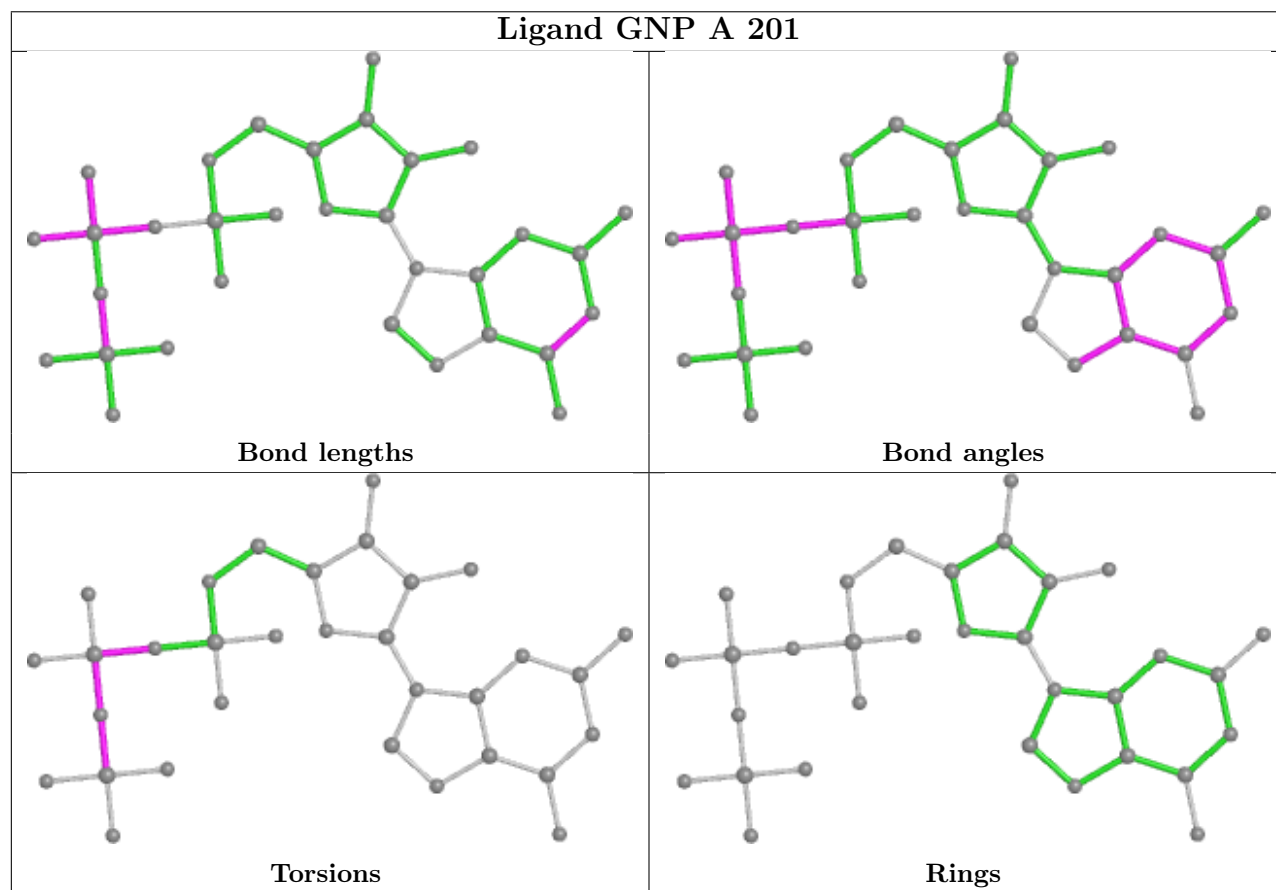
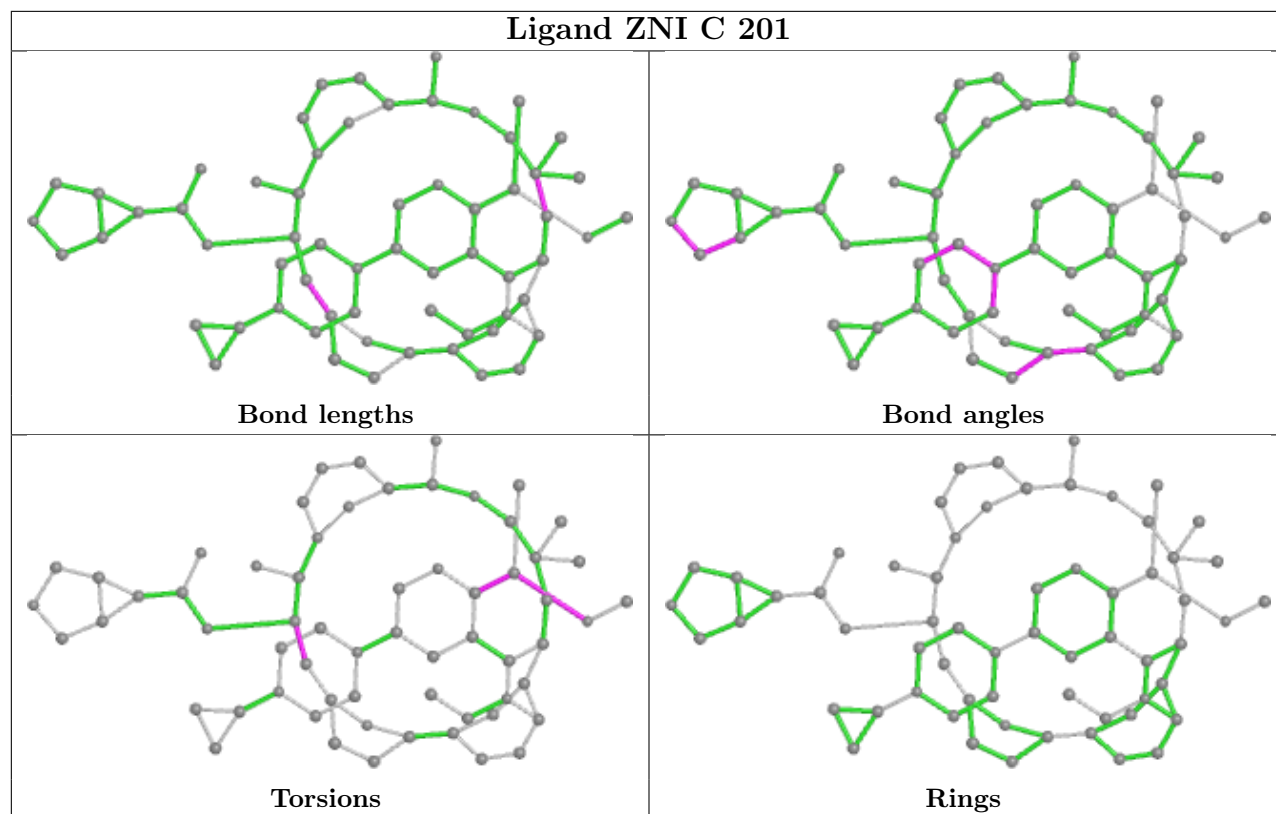
Mol	Chain	Res	Type	Atoms
5	C	201	ZNI	C26-C27-C28-O4
5	D	201	ZNI	C26-C27-C28-O4
3	A	201	GNP	PA-O3A-PB-O2B
3	B	201	GNP	PG-N3B-PB-O3A

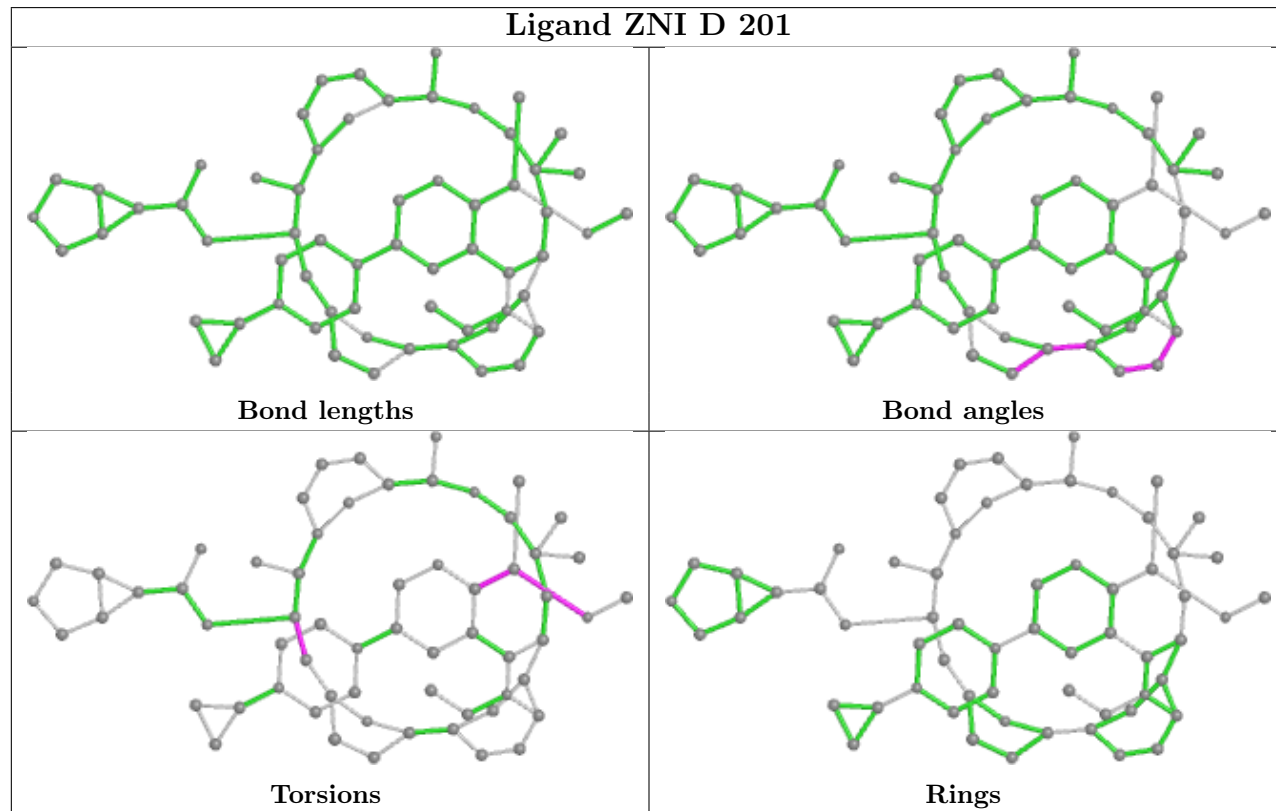
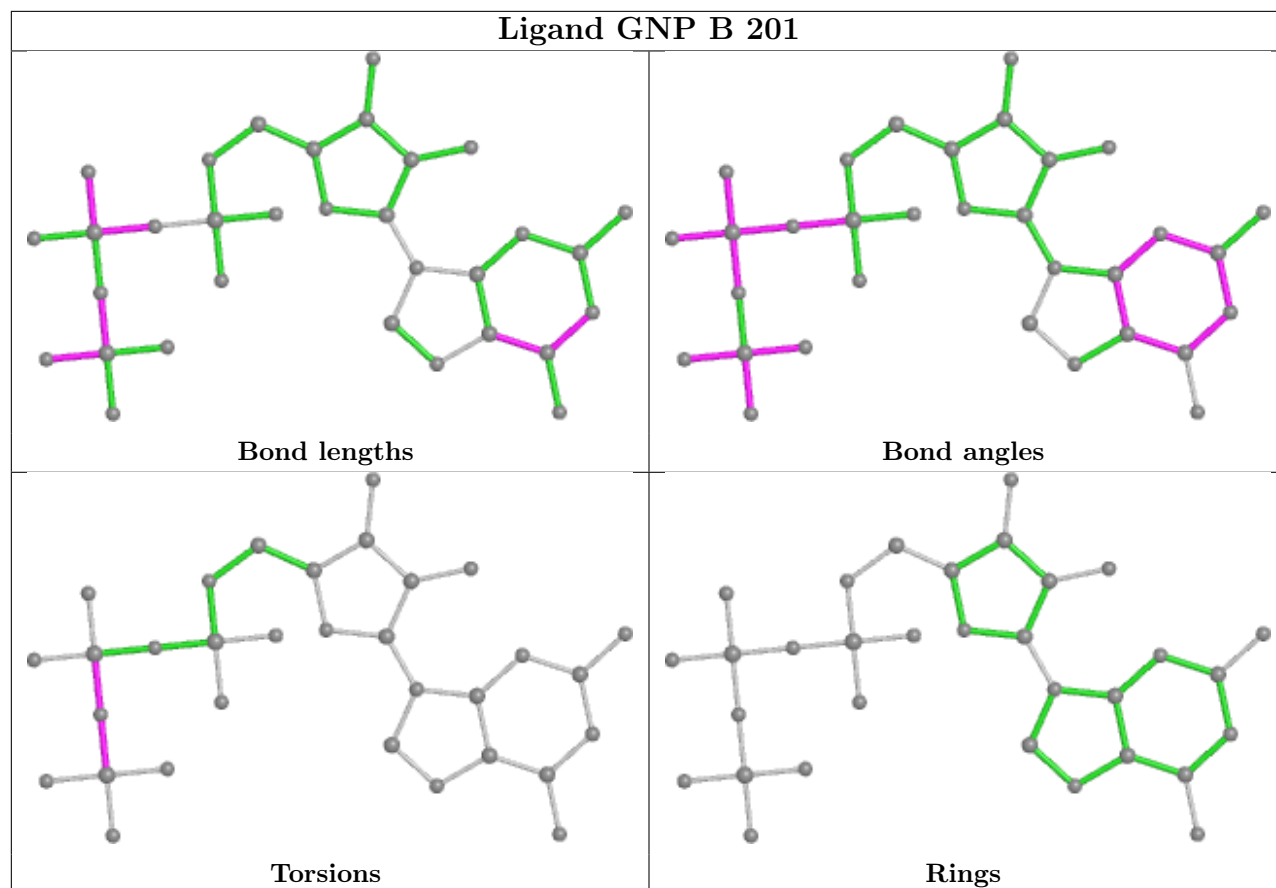
There are no ring outliers.

1 monomer is involved in 1 short contact:

Mol	Chain	Res	Type	Clashes	Symm-Clashes
3	B	201	GNP	1	0

The following is a two-dimensional graphical depiction of Mogul quality analysis of bond lengths, bond angles, torsion angles, and ring geometry for all instances of the Ligand of Interest. In addition, ligands with molecular weight > 250 and outliers as shown on the validation Tables will also be included. For torsion angles, if less than 5% of the Mogul distribution of torsion angles is within 10 degrees of the torsion angle in question, then that torsion angle is considered an outlier. Any bond that is central to one or more torsion angles identified as an outlier by Mogul will be highlighted in the graph. For rings, the root-mean-square deviation (RMSD) between the ring in question and similar rings identified by Mogul is calculated over all ring torsion angles. If the average RMSD is greater than 60 degrees and the minimal RMSD between the ring in question and any Mogul-identified rings is also greater than 60 degrees, then that ring is considered an outlier. The outliers are highlighted in purple. The color gray indicates Mogul did not find sufficient equivalents in the CSD to analyse the geometry.





5.7 Other polymers [i](#)

There are no such residues in this entry.

5.8 Polymer linkage issues [i](#)

There are no chain breaks in this entry.

6 Fit of model and data [i](#)

6.1 Protein, DNA and RNA chains [i](#)

In the following table, the column labelled ‘#RSRZ> 2’ contains the number (and percentage) of RSRZ outliers, followed by percent RSRZ outliers for the chain as percentile scores relative to all X-ray entries and entries of similar resolution. The OWAB column contains the minimum, median, 95th percentile and maximum values of the occupancy-weighted average B-factor per residue. The column labelled ‘Q< 0.9’ lists the number of (and percentage) of residues with an average occupancy less than 0.9.

Mol	Chain	Analysed	<RSRZ>	#RSRZ>2	OWAB(Å ²)	Q<0.9
1	A	169/170 (99%)	-0.34	1 (0%) 89 91	15, 27, 50, 59	0
1	B	170/170 (100%)	0.12	7 (4%) 37 40	18, 36, 68, 79	0
2	C	165/166 (99%)	-0.54	1 (0%) 89 91	15, 22, 36, 60	0
2	D	162/166 (97%)	-0.53	0 100 100	14, 22, 36, 46	0
All	All	666/672 (99%)	-0.32	9 (1%) 75 76	14, 25, 53, 79	0

All (9) RSRZ outliers are listed below:

Mol	Chain	Res	Type	RSRZ
1	A	29	VAL	5.0
2	C	0	SER	4.2
1	B	169	LYS	4.1
1	B	29	VAL	3.8
1	B	32	TYR	3.8
1	B	122	SER	3.0
1	B	120	LEU	2.4
1	B	168	GLU	2.4
1	B	121	PRO	2.1

6.2 Non-standard residues in protein, DNA, RNA chains [i](#)

There are no non-standard protein/DNA/RNA residues in this entry.

6.3 Carbohydrates [i](#)

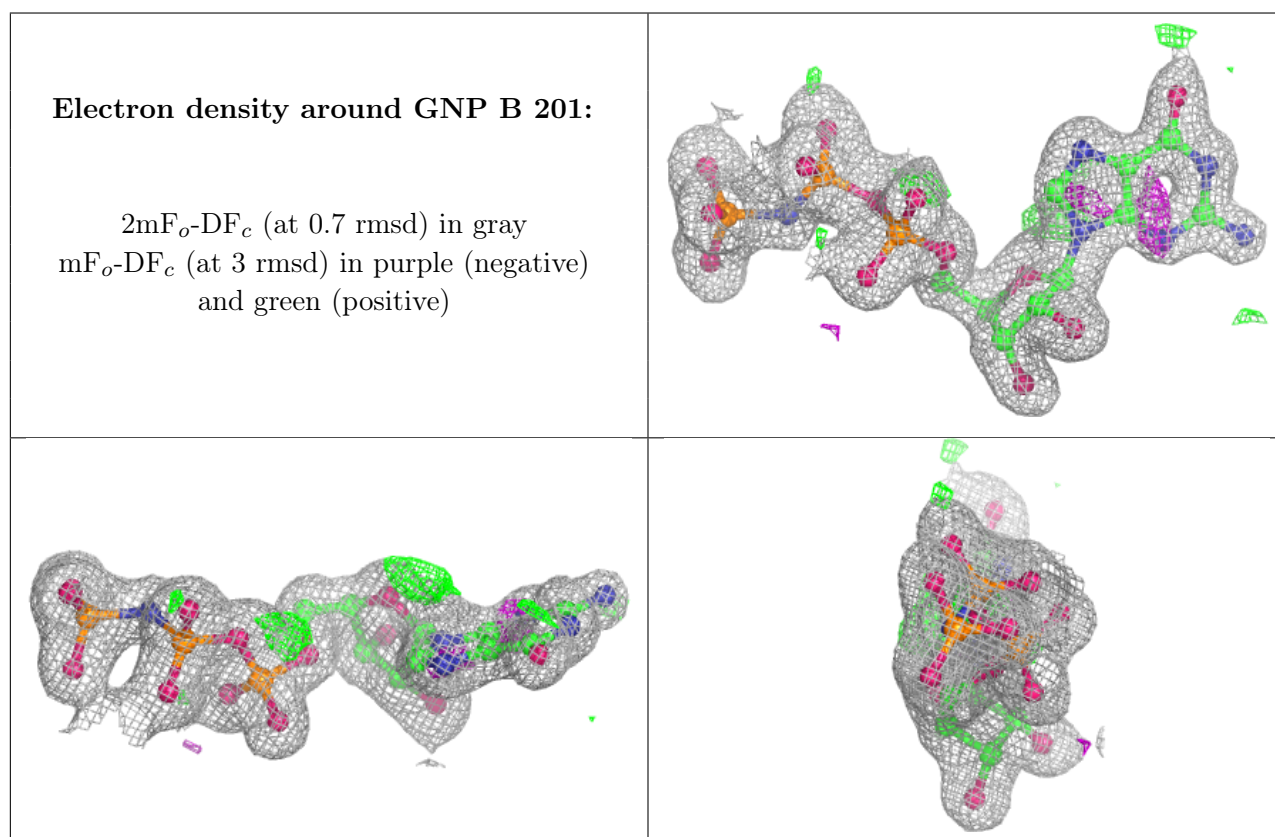
There are no monosaccharides in this entry.

6.4 Ligands [i](#)

In the following table, the Atoms column lists the number of modelled atoms in the group and the number defined in the chemical component dictionary. The B-factors column lists the minimum, median, 95th percentile and maximum values of B factors of atoms in the group. The column labelled 'Q<0.9' lists the number of atoms with occupancy less than 0.9.

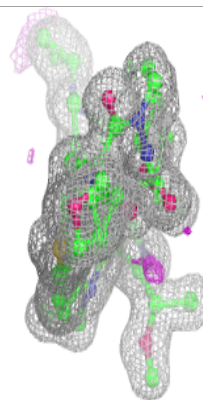
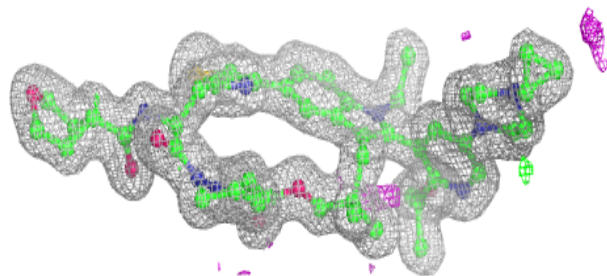
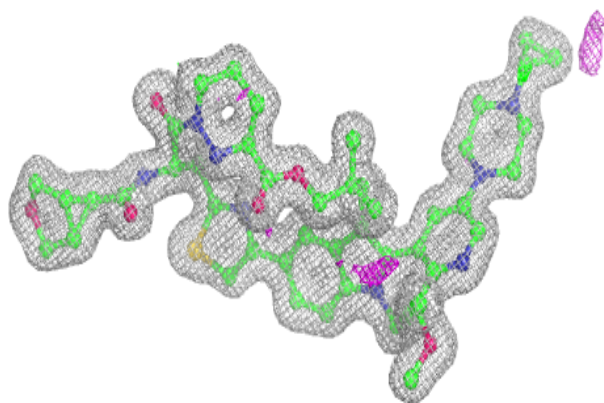
Mol	Type	Chain	Res	Atoms	RSCC	RSR	B-factors(Å ²)	Q<0.9
3	GNP	B	201	32/32	0.97	0.09	22,26,30,31	0
5	ZNI	C	201	62/62	0.97	0.06	16,18,24,28	0
5	ZNI	D	201	62/62	0.98	0.06	12,14,20,25	0
3	GNP	A	201	32/32	0.99	0.07	14,19,23,25	0
4	MG	A	202	1/1	1.00	0.06	15,15,15,15	0
4	MG	B	202	1/1	1.00	0.04	22,22,22,22	0

The following is a graphical depiction of the model fit to experimental electron density of all instances of the Ligand of Interest. In addition, ligands with molecular weight > 250 and outliers as shown on the geometry validation Tables will also be included. Each fit is shown from different orientation to approximate a three-dimensional view.

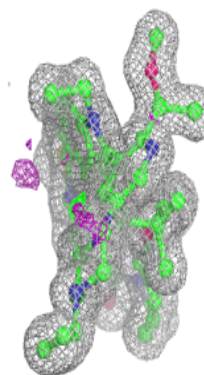
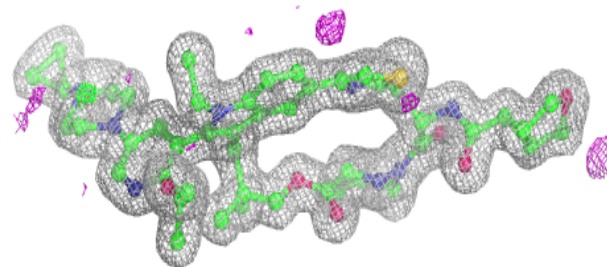
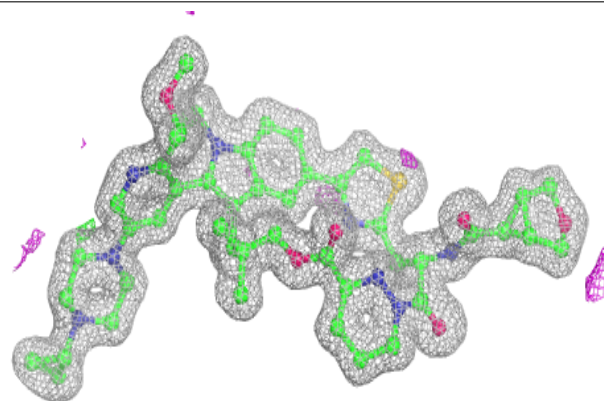


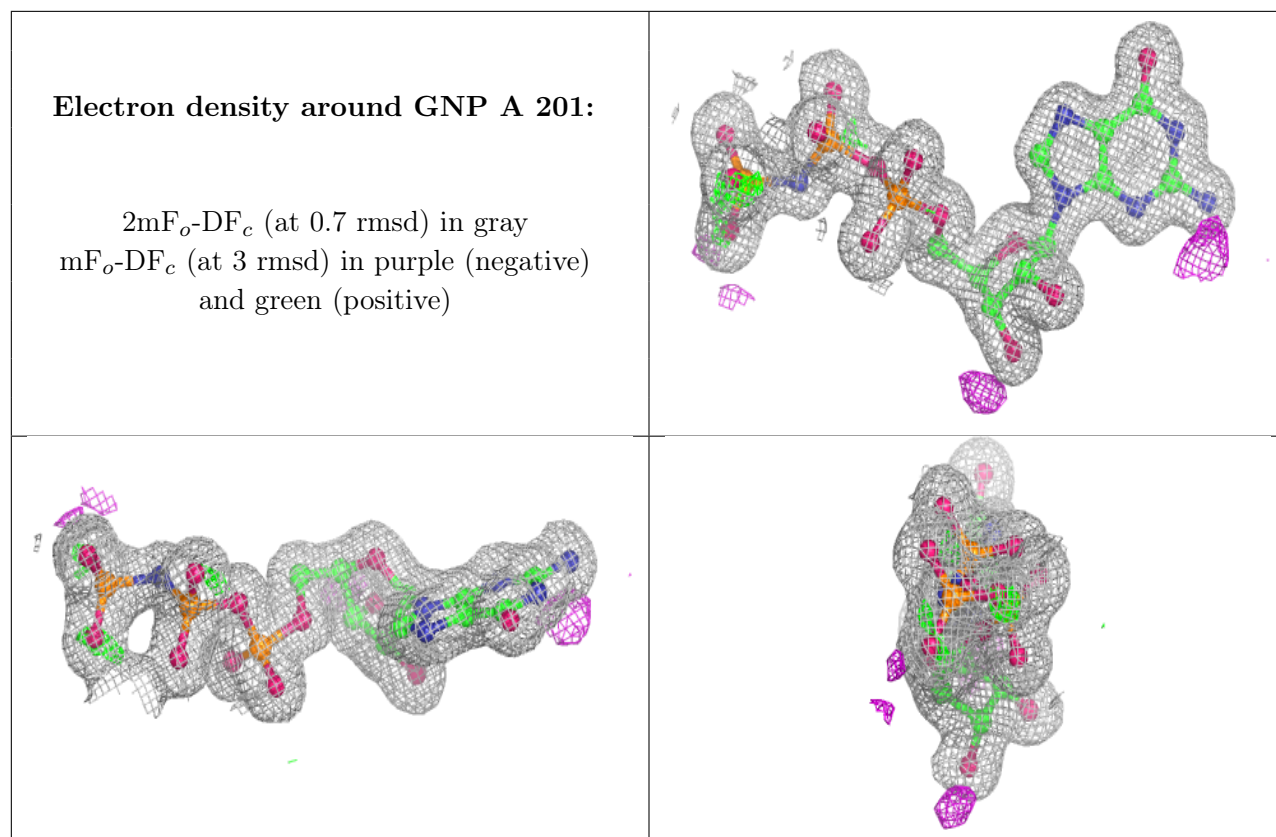
Electron density around ZNI C 201:

$2mF_o-DF_c$ (at 0.7 rmsd) in gray
 mF_o-DF_c (at 3 rmsd) in purple (negative)
and green (positive)

**Electron density around ZNI D 201:**

$2mF_o-DF_c$ (at 0.7 rmsd) in gray
 mF_o-DF_c (at 3 rmsd) in purple (negative)
and green (positive)





6.5 Other polymers [i](#)

There are no such residues in this entry.