



Full wwPDB X-ray Structure Validation Report ⓘ

Oct 15, 2023 – 06:09 PM EDT

PDB ID : 7TBU
Title : Crystal structure of the 5-enolpyruvate-shikimate-3-phosphate synthase (EPSPS) domain of Aro1 from *Candida albicans* in complex with shikimate-3-phosphate
Authors : Stogios, P.J.; Evdokimova, E.; Michalska, K.; Di Leo, R.; Savchenko, A.; Joachimiak, A.; Satchell, K.J.F.; Center for Structural Genomics of Infectious Diseases (CSGID)
Deposited on : 2021-12-22
Resolution : 1.85 Å (reported)

This is a Full wwPDB X-ray Structure Validation Report for a publicly released PDB entry.

We welcome your comments at validation@mail.wwpdb.org

A user guide is available at

<https://www.wwpdb.org/validation/2017/XrayValidationReportHelp>

with specific help available everywhere you see the ⓘ symbol.

The types of validation reports are described at

<http://www.wwpdb.org/validation/2017/FAQs#types>.

The following versions of software and data (see [references ⓘ](#)) were used in the production of this report:

MolProbity : 4.02b-467
Mogul : 1.8.5 (274361), CSD as541be (2020)
Xtriage (Phenix) : 1.13
EDS : 2.36
buster-report : 1.1.7 (2018)
Percentile statistics : 20191225.v01 (using entries in the PDB archive December 25th 2019)
Refmac : 5.8.0158
CCP4 : 7.0.044 (Gargrove)
Ideal geometry (proteins) : Engh & Huber (2001)

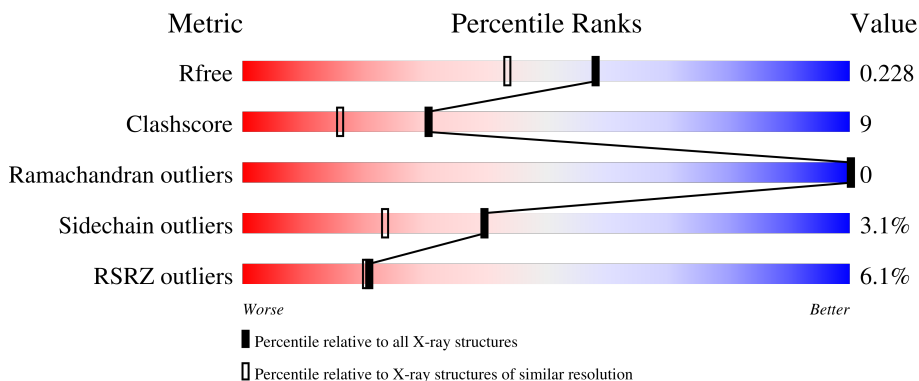
1 Overall quality at a glance

The following experimental techniques were used to determine the structure:

X-RAY DIFFRACTION

The reported resolution of this entry is 1.85 Å.

Percentile scores (ranging between 0-100) for global validation metrics of the entry are shown in the following graphic. The table shows the number of entries on which the scores are based.



Metric	Whole archive (#Entries)	Similar resolution (#Entries, resolution range(Å))
R_{free}	130704	2469 (1.86-1.86)
Clashscore	141614	2625 (1.86-1.86)
Ramachandran outliers	138981	2592 (1.86-1.86)
Sidechain outliers	138945	2592 (1.86-1.86)
RSRZ outliers	127900	2436 (1.86-1.86)

The table below summarises the geometric issues observed across the polymeric chains and their fit to the electron density. The red, orange, yellow and green segments of the lower bar indicate the fraction of residues that contain outliers for ≥ 3 , 2, 1 and 0 types of geometric quality criteria respectively. A grey segment represents the fraction of residues that are not modelled. The numeric value for each fraction is indicated below the corresponding segment, with a dot representing fractions $\leq 5\%$. The upper red bar (where present) indicates the fraction of residues that have poor fit to the electron density. The numeric value is given above the bar.

Mol	Chain	Length	Quality of chain
1	A	458	
1	B	458	

Ideal geometry (DNA, RNA) : Parkinson et al. (1996)
 Validation Pipeline (wwPDB-VP) : 2.36

2 Entry composition [i](#)

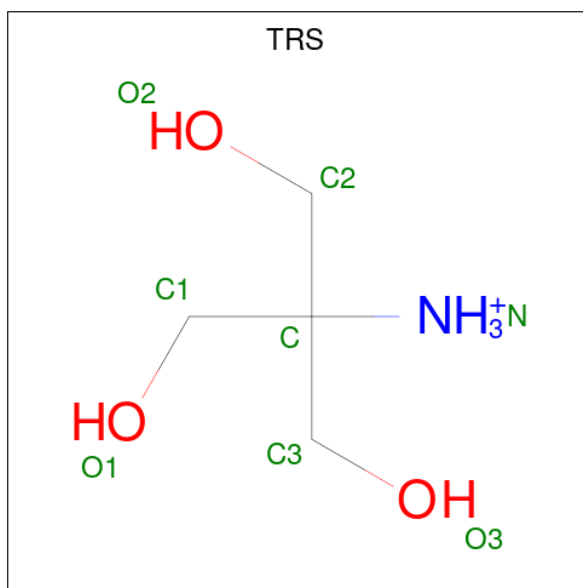
There are 4 unique types of molecules in this entry. The entry contains 7483 atoms, of which 0 are hydrogens and 0 are deuteriums.

In the tables below, the ZeroOcc column contains the number of atoms modelled with zero occupancy, the AltConf column contains the number of residues with at least one atom in alternate conformation and the Trace column contains the number of residues modelled with at most 2 atoms.

- Molecule 1 is a protein called 5-enolpyruvylshikimate-3-phosphate synthase.

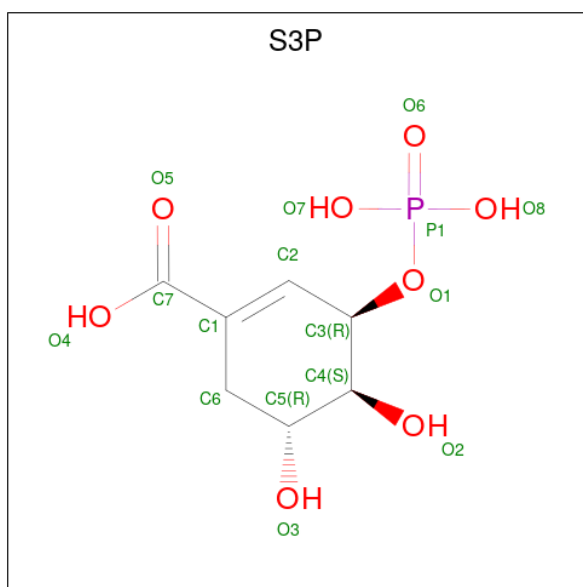
Mol	Chain	Residues	Atoms					ZeroOcc	AltConf	Trace
			Total	C	N	O	S			
1	A	450	Total 3368	C 2118	N 567	O 665	S 18	0	2	0
1	B	435	Total 3241	C 2042	N 543	O 638	S 18	0	1	0

- Molecule 2 is 2-AMINO-2-HYDROXYMETHYL-PROPANE-1,3-DIOL (three-letter code: TRS) (formula: $C_4H_{12}NO_3$).



Mol	Chain	Residues	Atoms				ZeroOcc	AltConf
			Total	C	N	O		
2	A	1	Total 8	C 4	N 1	O 3	0	0
2	B	1	Total 8	C 4	N 1	O 3	0	0

- Molecule 3 is SHIKIMATE-3-PHOSPHATE (three-letter code: S3P) (formula: $C_7H_{11}O_8P$) (labeled as "Ligand of Interest" by depositor).



Mol	Chain	Residues	Atoms				ZeroOcc	AltConf
3	A	1	Total	C	O	P	0	0
			16	7	8	1		
3	B	1	Total	C	O	P	0	0
			16	7	8	1		

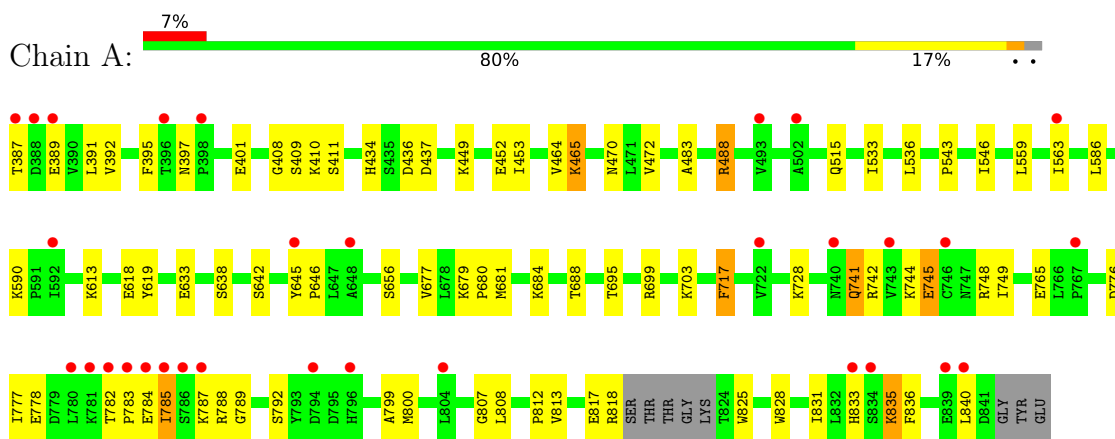
- Molecule 4 is water.

Mol	Chain	Residues	Atoms		ZeroOcc	AltConf
4	A	400	Total	O	0	24
			424	424		
4	B	386	Total	O	0	16
			402	402		

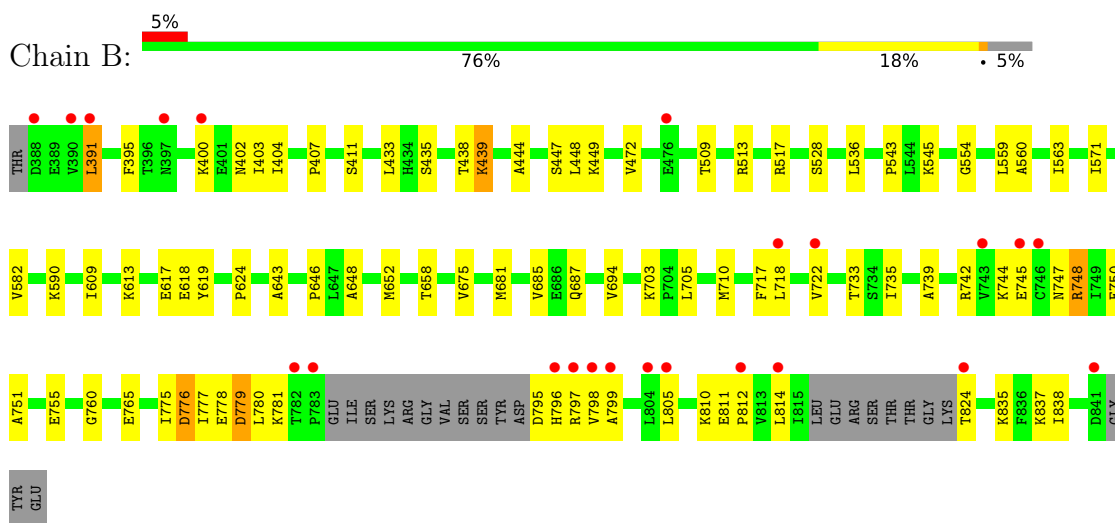
3 Residue-property plots i

These plots are drawn for all protein, RNA, DNA and oligosaccharide chains in the entry. The first graphic for a chain summarises the proportions of the various outlier classes displayed in the second graphic. The second graphic shows the sequence view annotated by issues in geometry and electron density. Residues are color-coded according to the number of geometric quality criteria for which they contain at least one outlier: green = 0, yellow = 1, orange = 2 and red = 3 or more. A red dot above a residue indicates a poor fit to the electron density ($RSRZ > 2$). Stretches of 2 or more consecutive residues without any outlier are shown as a green connector. Residues present in the sample, but not in the model, are shown in grey.

- Molecule 1: 5-enolpyruvylshikimate-3-phosphate synthase



- Molecule 1: 5-enolpyruvylshikimate-3-phosphate synthase



4 Data and refinement statistics i

Property	Value	Source
Space group	P 1 21 1	Depositor
Cell constants a, b, c, α , β , γ	44.99Å 159.75Å 55.87Å 90.00° 92.28° 90.00°	Depositor
Resolution (Å)	29.66 – 1.85 29.66 – 1.85	Depositor EDS
% Data completeness (in resolution range)	96.8 (29.66-1.85) 96.6 (29.66-1.85)	Depositor EDS
R_{merge}	0.08	Depositor
R_{sym}	(Not available)	Depositor
$\langle I/\sigma(I) \rangle$ ¹	1.66 (at 1.85Å)	Xtrriage
Refinement program	PHENIX 1.19.2_4158	Depositor
R, R_{free}	0.180 , 0.229 0.180 , 0.228	Depositor DCC
R_{free} test set	2007 reflections (3.00%)	wwPDB-VP
Wilson B-factor (Å ²)	26.2	Xtrriage
Anisotropy	0.159	Xtrriage
Bulk solvent k_{sol} (e/Å ³), B_{sol} (Å ²)	0.33 , 57.8	EDS
L-test for twinning ²	$\langle L \rangle = 0.49$, $\langle L^2 \rangle = 0.32$	Xtrriage
Estimated twinning fraction	0.053 for h,-k,-l	Xtrriage
F_o, F_c correlation	0.96	EDS
Total number of atoms	7483	wwPDB-VP
Average B, all atoms (Å ²)	38.0	wwPDB-VP

Xtrriage's analysis on translational NCS is as follows: *The largest off-origin peak in the Patterson function is 5.16% of the height of the origin peak. No significant pseudotranslation is detected.*

¹Intensities estimated from amplitudes.

²Theoretical values of $\langle |L| \rangle$, $\langle L^2 \rangle$ for acentric reflections are 0.5, 0.333 respectively for untwinned datasets, and 0.375, 0.2 for perfectly twinned datasets.

5 Model quality [i](#)

5.1 Standard geometry [i](#)

Bond lengths and bond angles in the following residue types are not validated in this section: TRS, S3P

The Z score for a bond length (or angle) is the number of standard deviations the observed value is removed from the expected value. A bond length (or angle) with $|Z| > 5$ is considered an outlier worth inspection. RMSZ is the root-mean-square of all Z scores of the bond lengths (or angles).

Mol	Chain	Bond lengths		Bond angles	
		RMSZ	# Z >5	RMSZ	# Z >5
1	A	0.38	0/3433	0.60	0/4661
1	B	0.36	0/3301	0.61	0/4482
All	All	0.37	0/6734	0.60	0/9143

There are no bond length outliers.

There are no bond angle outliers.

There are no chirality outliers.

There are no planarity outliers.

5.2 Too-close contacts [i](#)

In the following table, the Non-H and H(model) columns list the number of non-hydrogen atoms and hydrogen atoms in the chain respectively. The H(added) column lists the number of hydrogen atoms added and optimized by MolProbity. The Clashes column lists the number of clashes within the asymmetric unit, whereas Symm-Clashes lists symmetry-related clashes.

Mol	Chain	Non-H	H(model)	H(added)	Clashes	Symm-Clashes
1	A	3368	0	3412	65	0
1	B	3241	0	3285	58	0
2	A	8	0	12	4	0
2	B	8	0	12	1	0
3	A	16	0	8	0	0
3	B	16	0	8	0	0
4	A	424	0	0	11	0
4	B	402	0	0	8	0
All	All	7483	0	6737	123	0

The all-atom clashscore is defined as the number of clashes found per 1000 atoms (including hydrogen atoms). The all-atom clashscore for this structure is 9.

All (123) close contacts within the same asymmetric unit are listed below, sorted by their clash magnitude.

Atom-1	Atom-2	Interatomic distance (Å)	Clash overlap (Å)
1:B:718:LEU:HD13	1:B:797:ARG:O	1.38	1.22
1:B:778:GLU:O	1:B:778:GLU:HG3	1.73	0.86
1:B:718:LEU:CD1	1:B:797:ARG:O	2.23	0.85
1:A:783:PRO:O	1:A:788:ARG:HB2	1.81	0.80
1:B:411:SER:H	2:B:901:TRS:H11	1.50	0.76
1:B:798:VAL:HG12	1:B:799:ALA:N	2.00	0.76
1:B:710:MET:HG3	1:B:735:ILE:HG23	1.67	0.74
1:B:433:LEU:O	1:B:438:THR:HG21	1.88	0.74
1:B:718:LEU:HD11	1:B:748:ARG:HE	1.52	0.72
1:A:717:PHE:CE1	1:A:741:GLN:HG2	2.25	0.71
1:B:391:LEU:HD22	1:B:812:PRO:HB2	1.73	0.71
1:A:633:GLU:OE1	4:A:1001[A]:HOH:O	2.08	0.71
1:A:452:GLU:HB2	1:A:465:LYS:HG3	1.71	0.70
1:A:778:GLU:O	1:A:778:GLU:HG3	1.92	0.69
1:B:775:ILE:HG13	1:B:776:ASP:O	1.93	0.69
1:A:395:PHE:O	1:A:699:ARG:NH2	2.25	0.69
1:A:401:GLU:HG2	1:A:656:SER:HB3	1.76	0.67
1:B:760:GLY:HA3	1:B:780:LEU:HD23	1.77	0.66
1:A:470:ASN:ND2	4:A:1006:HOH:O	2.28	0.65
1:A:410:LYS:H	2:A:901:TRS:HN2	1.43	0.65
1:B:795:ASP:HB3	1:B:798:VAL:HG23	1.78	0.65
1:A:409:SER:OG	2:A:901:TRS:H11	1.97	0.64
1:B:403:ILE:HD13	1:B:658:THR:HB	1.78	0.64
1:B:528:SER:HB2	4:B:1049:HOH:O	2.01	0.61
1:A:434:HIS:ND1	4:A:1007:HOH:O	2.32	0.61
1:B:739:ALA:O	1:B:742:ARG:HG3	2.00	0.61
1:A:703:LYS:NZ	4:A:1009:HOH:O	2.32	0.60
1:A:783:PRO:O	1:A:788:ARG:HD3	2.03	0.59
1:A:488:ARG:NH2	4:A:1004:HOH:O	2.26	0.59
1:A:777:ILE:HG22	1:A:777:ILE:O	2.02	0.59
1:A:728:LYS:NZ	4:A:1008:HOH:O	2.32	0.58
1:B:509:THR:HG22	1:B:543:PRO:HB3	1.87	0.56
1:A:411:SER:N	2:A:901:TRS:O2	2.39	0.56
1:B:795:ASP:HB3	1:B:798:VAL:CG2	2.35	0.56
1:A:613:LYS:HE3	1:A:618:GLU:O	2.06	0.55
1:A:452:GLU:HB2	1:A:465:LYS:CG	2.35	0.55
1:B:435:SER:H	1:B:438:THR:HG22	1.72	0.54
1:A:436:ASP:OD2	1:A:437:ASP:N	2.41	0.54
1:B:745:GLU:OE1	1:B:795:ASP:HA	2.08	0.54
1:A:449:LYS:HB2	1:A:472:VAL:HG22	1.89	0.53

Continued on next page...

Continued from previous page...

Atom-1	Atom-2	Interatomic distance (Å)	Clash overlap (Å)
1:B:395:PHE:HA	1:B:838:ILE:HD12	1.91	0.53
1:A:679:LYS:HB3	1:A:680:PRO:HD3	1.91	0.52
1:B:404:ILE:HD13	1:B:835:LYS:HD3	1.92	0.51
1:B:407:PRO:HG2	4:B:1065:HOH:O	2.10	0.51
1:B:722:VAL:HG13	1:B:805:LEU:HG	1.94	0.50
1:B:810:LYS:NZ	4:B:1012:HOH:O	2.44	0.50
1:B:751:ALA:O	1:B:755:GLU:HG2	2.10	0.50
1:A:792:SER:HB2	1:A:799:ALA:HB2	1.93	0.50
1:B:705:LEU:O	1:B:733:THR:HA	2.12	0.50
1:A:590:LYS:HG2	1:A:619:TYR:CE2	2.48	0.49
1:B:685:VAL:HG22	1:B:694:VAL:HG22	1.95	0.49
1:B:742:ARG:O	1:B:747:ASN:HA	2.13	0.49
1:A:744:LYS:O	1:A:745:GLU:C	2.50	0.48
1:A:453:ILE:HD13	1:A:464:VAL:HG22	1.94	0.48
1:A:613:LYS:CE	1:A:618:GLU:O	2.61	0.48
1:A:792:SER:CB	1:A:799:ALA:HB2	2.44	0.48
1:A:717:PHE:HE1	1:A:741:GLN:HG2	1.73	0.48
1:B:648:ALA:O	1:B:652:MET:HG3	2.13	0.48
1:B:750:GLU:HG2	1:B:765:GLU:OE2	2.13	0.48
1:A:776:ASP:HB2	1:A:778:GLU:HG2	1.96	0.48
1:A:833:HIS:HB2	1:A:840:LEU:HD12	1.95	0.48
1:A:409:SER:HG	2:A:901:TRS:H11	1.78	0.47
1:B:687:GLN:O	4:B:1001:HOH:O	2.20	0.47
1:A:745:GLU:OE2	1:A:745:GLU:N	2.43	0.47
1:A:782:THR:HG21	1:A:813:VAL:HG22	1.95	0.47
1:A:787:LYS:C	1:A:789:GLY:H	2.18	0.47
1:A:391:LEU:HD11	1:A:812:PRO:HB2	1.97	0.47
1:A:784:GLU:HB3	1:A:785:ILE:HG13	1.97	0.47
1:A:799:ALA:HB3	4:A:1176:HOH:O	2.15	0.46
1:A:646:PRO:HB3	1:A:836:PHE:HZ	1.80	0.46
1:B:835:LYS:NZ	4:B:1014:HOH:O	2.45	0.46
1:B:643:ALA:O	1:B:646:PRO:HD2	2.16	0.46
1:B:703:LYS:NZ	4:B:1021:HOH:O	2.49	0.46
1:B:744:LYS:HE2	1:B:748:ARG:HH12	1.81	0.45
1:B:617:GLU:HA	1:B:617:GLU:OE1	2.17	0.45
1:A:642:SER:HB3	1:A:825:TRP:CE3	2.52	0.45
1:A:785:ILE:HD11	4:A:1329:HOH:O	2.15	0.45
1:A:800:MET:HG2	1:A:828:TRP:CD1	2.52	0.45
1:B:449:LYS:HB2	1:B:472:VAL:HG22	1.98	0.45
1:A:536:LEU:HB2	1:A:543:PRO:HB2	1.98	0.45
1:B:560:ALA:O	1:B:563:ILE:HG12	2.18	0.44

Continued on next page...

Continued from previous page...

Atom-1	Atom-2	Interatomic distance (Å)	Clash overlap (Å)
1:B:435:SER:O	1:B:438:THR:HG22	2.18	0.44
1:B:795:ASP:OD1	1:B:796:HIS:N	2.51	0.44
1:B:796:HIS:ND1	1:B:824:THR:HA	2.32	0.44
1:A:677:VAL:O	1:A:681:MET:HG3	2.18	0.43
1:A:777:ILE:CD1	1:A:808:LEU:HD13	2.47	0.43
1:A:831:ILE:HD12	1:A:835:LYS:HD3	2.00	0.43
1:B:613:LYS:HD3	1:B:618:GLU:O	2.18	0.43
1:A:387:THR:HB	1:A:817:GLU:HA	2.00	0.43
1:A:684:LYS:HB3	1:A:695:THR:OG1	2.18	0.43
1:A:559:LEU:O	1:A:586:LEU:HA	2.17	0.43
1:A:728:LYS:HE2	4:A:1286:HOH:O	2.18	0.43
1:A:515:GLN:HG2	1:A:543:PRO:HD3	2.00	0.43
1:A:777:ILE:O	1:A:777:ILE:CG2	2.67	0.43
1:B:536:LEU:HD11	1:B:545[B]:LYS:HB2	2.00	0.43
1:B:777:ILE:O	1:B:779:ASP:N	2.48	0.42
1:A:392:VAL:HA	1:A:840:LEU:HD23	2.01	0.42
1:B:675:VAL:HG22	4:B:1069:HOH:O	2.20	0.42
1:A:408:GLY:HA2	1:A:638:SER:HA	2.00	0.42
1:B:837:LYS:HB3	1:B:837:LYS:HE3	1.80	0.42
1:A:688:THR:HB	4:A:1317:HOH:O	2.20	0.42
1:B:681:MET:HG2	1:B:703:LYS:O	2.19	0.42
1:B:609:ILE:HG23	1:B:624:PRO:HG2	2.02	0.42
1:A:559:LEU:HG	1:A:563:ILE:HD11	2.02	0.41
1:B:744:LYS:NZ	4:B:1026:HOH:O	2.52	0.41
1:B:814:LEU:HD23	1:B:814:LEU:HA	1.89	0.41
1:A:741:GLN:OE1	1:A:748:ARG:NH1	2.43	0.41
1:B:554:GLY:HA2	1:B:582:VAL:HG22	2.01	0.41
1:B:444:ALA:O	1:B:448:LEU:HD22	2.21	0.41
1:A:749:ILE:HG22	1:A:765:GLU:HG2	2.02	0.41
1:B:559:LEU:HD11	1:B:571:ILE:HD12	2.03	0.41
1:A:465:LYS:HE3	4:A:1202:HOH:O	2.21	0.41
1:A:395:PHE:CE2	1:A:807:GLY:HA3	2.56	0.41
1:B:536:LEU:HD11	1:B:545[A]:LYS:HB2	2.03	0.41
1:B:590:LYS:HG3	1:B:619:TYR:CE2	2.55	0.41
1:A:788:ARG:HD2	1:A:812:PRO:O	2.21	0.41
1:A:533:ILE:HG12	1:A:546:ILE:HG12	2.03	0.40
1:A:645:TYR:HB2	1:A:646:PRO:HD3	2.03	0.40
1:A:437:ASP:HA	1:A:483:ALA:HB1	2.04	0.40
1:B:400:LYS:HB3	1:B:400:LYS:NZ	2.36	0.40
1:B:435:SER:O	1:B:439:LYS:HD3	2.21	0.40
1:A:395:PHE:CZ	1:A:807:GLY:HA3	2.56	0.40

Continued on next page...

Continued from previous page...

Atom-1	Atom-2	Interatomic distance (Å)	Clash overlap (Å)
1:B:805:LEU:HD23	1:B:805:LEU:HA	1.92	0.40

There are no symmetry-related clashes.

5.3 Torsion angles [i](#)

5.3.1 Protein backbone [i](#)

In the following table, the Percentiles column shows the percent Ramachandran outliers of the chain as a percentile score with respect to all X-ray entries followed by that with respect to entries of similar resolution.

The Analysed column shows the number of residues for which the backbone conformation was analysed, and the total number of residues.

Mol	Chain	Analysed	Favoured	Allowed	Outliers	Percentiles	
1	A	448/458 (98%)	429 (96%)	19 (4%)	0	100	100
1	B	430/458 (94%)	415 (96%)	15 (4%)	0	100	100
All	All	878/916 (96%)	844 (96%)	34 (4%)	0	100	100

There are no Ramachandran outliers to report.

5.3.2 Protein sidechains [i](#)

In the following table, the Percentiles column shows the percent sidechain outliers of the chain as a percentile score with respect to all X-ray entries followed by that with respect to entries of similar resolution.

The Analysed column shows the number of residues for which the sidechain conformation was analysed, and the total number of residues.

Mol	Chain	Analysed	Rotameric	Outliers	Percentiles	
1	A	376/380 (99%)	365 (97%)	11 (3%)	42	26
1	B	361/380 (95%)	349 (97%)	12 (3%)	38	21
All	All	737/760 (97%)	714 (97%)	23 (3%)	40	23

All (23) residues with a non-rotameric sidechain are listed below:

Mol	Chain	Res	Type
1	A	389	GLU
1	A	397	ASN
1	A	465	LYS
1	A	488	ARG
1	A	717	PHE
1	A	741	GLN
1	A	742	ARG
1	A	745	GLU
1	A	785	ILE
1	A	818	ARG
1	A	835	LYS
1	B	391	LEU
1	B	402	ASN
1	B	439	LYS
1	B	447	SER
1	B	513	ARG
1	B	517	ARG
1	B	717	PHE
1	B	748	ARG
1	B	776	ASP
1	B	779	ASP
1	B	781	LYS
1	B	811	GLU

Sometimes sidechains can be flipped to improve hydrogen bonding and reduce clashes. There are no such sidechains identified.

5.3.3 RNA [i](#)

There are no RNA molecules in this entry.

5.4 Non-standard residues in protein, DNA, RNA chains [i](#)

There are no non-standard protein/DNA/RNA residues in this entry.

5.5 Carbohydrates [i](#)

There are no monosaccharides in this entry.

5.6 Ligand geometry

4 ligands are modelled in this entry.

In the following table, the Counts columns list the number of bonds (or angles) for which Mogul statistics could be retrieved, the number of bonds (or angles) that are observed in the model and the number of bonds (or angles) that are defined in the Chemical Component Dictionary. The Link column lists molecule types, if any, to which the group is linked. The Z score for a bond length (or angle) is the number of standard deviations the observed value is removed from the expected value. A bond length (or angle) with $|Z| > 2$ is considered an outlier worth inspection. RMSZ is the root-mean-square of all Z scores of the bond lengths (or angles).

Mol	Type	Chain	Res	Link	Bond lengths			Bond angles		
					Counts	RMSZ	# Z > 2	Counts	RMSZ	# Z > 2
3	S3P	B	902	-	15,16,16	4.95	7 (46%)	20,24,24	1.20	3 (15%)
3	S3P	A	902	-	15,16,16	5.02	7 (46%)	20,24,24	1.25	2 (10%)
2	TRS	A	901	-	7,7,7	0.38	0	9,9,9	0.80	0
2	TRS	B	901	-	7,7,7	0.41	0	9,9,9	1.02	0

In the following table, the Chirals column lists the number of chiral outliers, the number of chiral centers analysed, the number of these observed in the model and the number defined in the Chemical Component Dictionary. Similar counts are reported in the Torsion and Rings columns. '-' means no outliers of that kind were identified.

Mol	Type	Chain	Res	Link	Chirals	Torsions	Rings
3	S3P	B	902	-	-	0/9/25/25	0/1/1/1
3	S3P	A	902	-	-	2/9/25/25	0/1/1/1
2	TRS	A	901	-	-	3/9/9/9	-
2	TRS	B	901	-	-	6/9/9/9	-

All (14) bond length outliers are listed below:

Mol	Chain	Res	Type	Atoms	Z	Observed(Å)	Ideal(Å)
3	A	902	S3P	C2-C1	11.34	1.60	1.33
3	B	902	S3P	C2-C1	11.13	1.60	1.33
3	A	902	S3P	C5-C4	-9.60	1.38	1.52
3	B	902	S3P	C5-C4	-9.28	1.38	1.52
3	B	902	S3P	C4-C3	7.69	1.65	1.52
3	A	902	S3P	C6-C5	7.44	1.65	1.52
3	A	902	S3P	C4-C3	7.43	1.65	1.52
3	B	902	S3P	C6-C5	6.84	1.64	1.52
3	B	902	S3P	C6-C1	-4.16	1.44	1.51
3	B	902	S3P	P1-O1	3.78	1.66	1.59
3	A	902	S3P	P1-O1	3.67	1.66	1.59

Continued on next page...

Continued from previous page...

Mol	Chain	Res	Type	Atoms	Z	Observed(Å)	Ideal(Å)
3	A	902	S3P	C6-C1	-3.61	1.45	1.51
3	B	902	S3P	C3-C2	-3.30	1.45	1.50
3	A	902	S3P	C3-C2	-3.27	1.45	1.50

All (5) bond angle outliers are listed below:

Mol	Chain	Res	Type	Atoms	Z	Observed(°)	Ideal(°)
3	A	902	S3P	C6-C5-C4	2.58	113.41	110.30
3	B	902	S3P	C6-C5-C4	2.34	113.12	110.30
3	B	902	S3P	C6-C1-C2	-2.33	119.11	122.23
3	B	902	S3P	C3-C2-C1	-2.27	118.95	122.49
3	A	902	S3P	O4-C7-C1	2.20	120.16	115.49

There are no chirality outliers.

All (11) torsion outliers are listed below:

Mol	Chain	Res	Type	Atoms
2	B	901	TRS	C2-C-C1-O1
2	B	901	TRS	C1-C-C3-O3
2	B	901	TRS	C2-C-C3-O3
2	B	901	TRS	N-C-C3-O3
3	A	902	S3P	C6-C1-C7-O4
3	A	902	S3P	C6-C1-C7-O5
2	A	901	TRS	C3-C-C2-O2
2	B	901	TRS	N-C-C1-O1
2	A	901	TRS	C1-C-C2-O2
2	B	901	TRS	C3-C-C1-O1
2	A	901	TRS	N-C-C2-O2

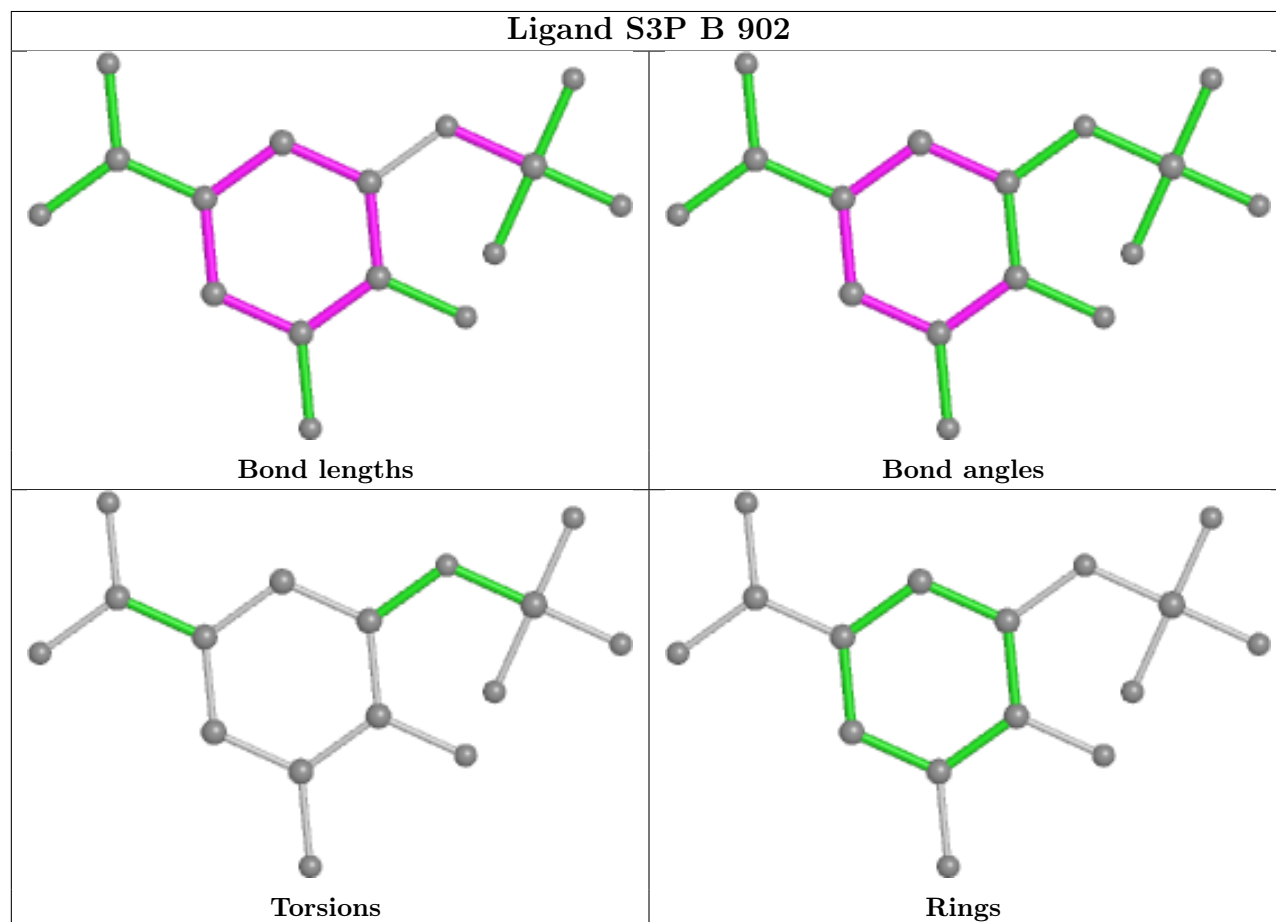
There are no ring outliers.

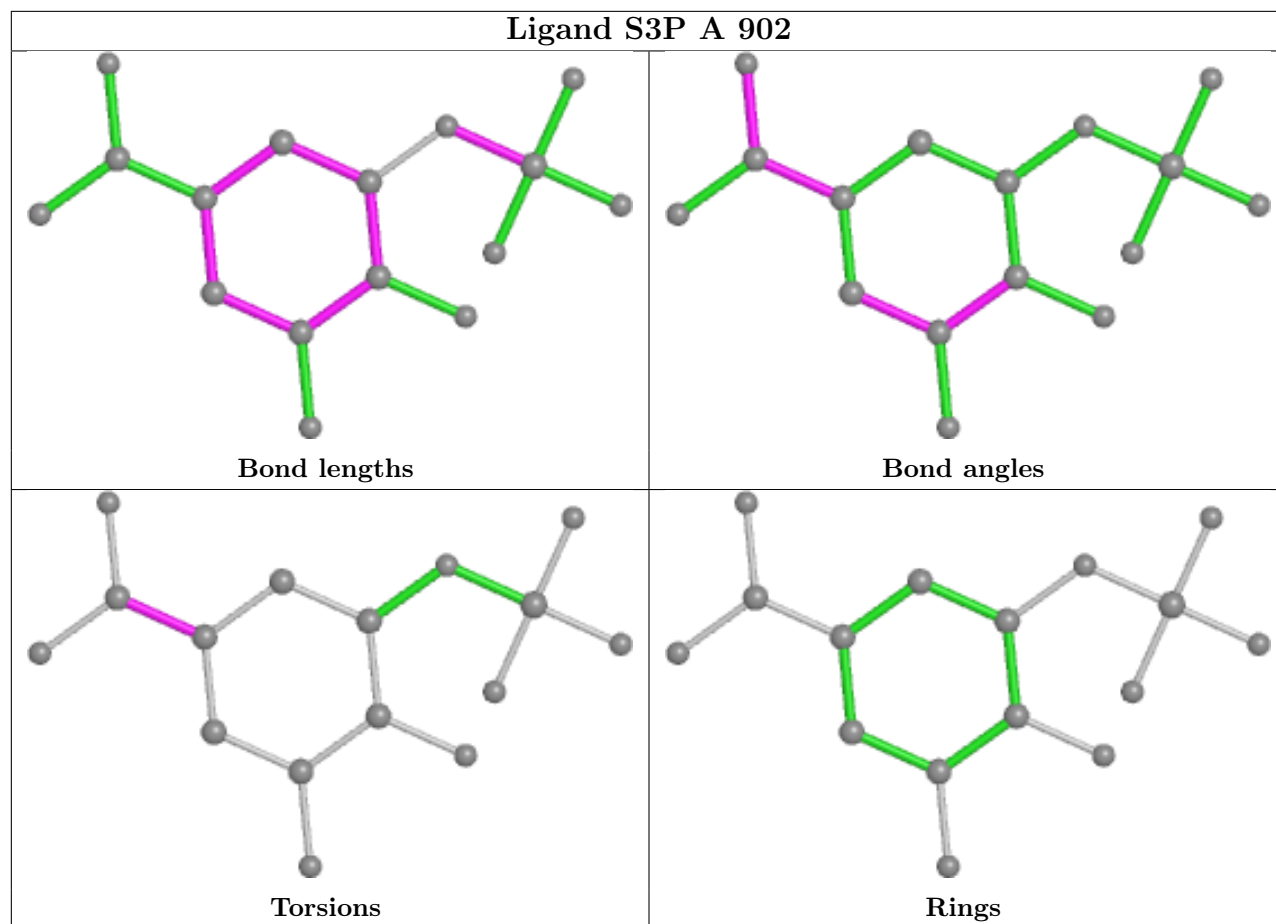
2 monomers are involved in 5 short contacts:

Mol	Chain	Res	Type	Clashes	Symm-Clashes
2	A	901	TRS	4	0
2	B	901	TRS	1	0

The following is a two-dimensional graphical depiction of Mogul quality analysis of bond lengths, bond angles, torsion angles, and ring geometry for all instances of the Ligand of Interest. In addition, ligands with molecular weight > 250 and outliers as shown on the validation Tables will also be included. For torsion angles, if less than 5% of the Mogul distribution of torsion angles is within 10 degrees of the torsion angle in question, then that torsion angle is considered an outlier.

Any bond that is central to one or more torsion angles identified as an outlier by Mogul will be highlighted in the graph. For rings, the root-mean-square deviation (RMSD) between the ring in question and similar rings identified by Mogul is calculated over all ring torsion angles. If the average RMSD is greater than 60 degrees and the minimal RMSD between the ring in question and any Mogul-identified rings is also greater than 60 degrees, then that ring is considered an outlier. The outliers are highlighted in purple. The color gray indicates Mogul did not find sufficient equivalents in the CSD to analyse the geometry.





5.7 Other polymers [i](#)

There are no such residues in this entry.

5.8 Polymer linkage issues [i](#)

There are no chain breaks in this entry.

6 Fit of model and data

6.1 Protein, DNA and RNA chains

In the following table, the column labelled ‘#RSRZ> 2’ contains the number (and percentage) of RSRZ outliers, followed by percent RSRZ outliers for the chain as percentile scores relative to all X-ray entries and entries of similar resolution. The OWAB column contains the minimum, median, 95th percentile and maximum values of the occupancy-weighted average B-factor per residue. The column labelled ‘Q< 0.9’ lists the number of (and percentage) of residues with an average occupancy less than 0.9.

Mol	Chain	Analysed	<RSRZ>	#RSRZ>2	OWAB(Å ²)	Q<0.9
1	A	450/458 (98%)	0.19	31 (6%) 16 16	16, 33, 68, 106	0
1	B	435/458 (94%)	0.18	23 (5%) 26 25	17, 34, 71, 112	0
All	All	885/916 (96%)	0.18	54 (6%) 21 20	16, 33, 70, 112	0

All (54) RSRZ outliers are listed below:

Mol	Chain	Res	Type	RSRZ
1	A	785	ILE	11.6
1	B	824	THR	9.6
1	A	387	THR	9.0
1	A	782	THR	6.6
1	B	799	ALA	6.5
1	B	743	VAL	5.7
1	A	743	VAL	5.7
1	A	786	SER	5.5
1	B	746	CYS	5.3
1	B	745	GLU	5.0
1	B	397	ASN	5.0
1	B	388	ASP	4.8
1	B	797	ARG	4.7
1	B	783	PRO	4.2
1	A	781	LYS	4.1
1	A	780	LEU	4.1
1	B	798	VAL	3.9
1	B	391	LEU	3.7
1	A	840	LEU	3.6
1	B	804	LEU	3.6
1	B	722	VAL	3.3
1	A	787	LYS	3.3
1	A	794	ASP	3.2
1	A	746	CYS	3.2

Continued on next page...

Continued from previous page...

Mol	Chain	Res	Type	RSRZ
1	B	796	HIS	3.0
1	B	812	PRO	3.0
1	A	834	SER	3.0
1	B	814	LEU	3.0
1	A	502	ALA	2.7
1	A	783	PRO	2.7
1	A	396	THR	2.7
1	B	400	LYS	2.6
1	A	388	ASP	2.6
1	B	805	LEU	2.5
1	A	398	PRO	2.4
1	B	841	ASP	2.4
1	B	390	VAL	2.4
1	A	592	ILE	2.3
1	A	796	HIS	2.3
1	B	782	THR	2.3
1	A	493	VAL	2.3
1	A	648	ALA	2.3
1	A	833	HIS	2.2
1	A	722	VAL	2.2
1	A	740	ASN	2.2
1	A	389	GLU	2.2
1	A	563	ILE	2.2
1	A	804	LEU	2.2
1	A	645	TYR	2.1
1	A	784	GLU	2.1
1	B	718	LEU	2.1
1	A	767	PRO	2.1
1	A	839	GLU	2.0
1	B	476	GLU	2.0

6.2 Non-standard residues in protein, DNA, RNA chains [i](#)

There are no non-standard protein/DNA/RNA residues in this entry.

6.3 Carbohydrates [i](#)

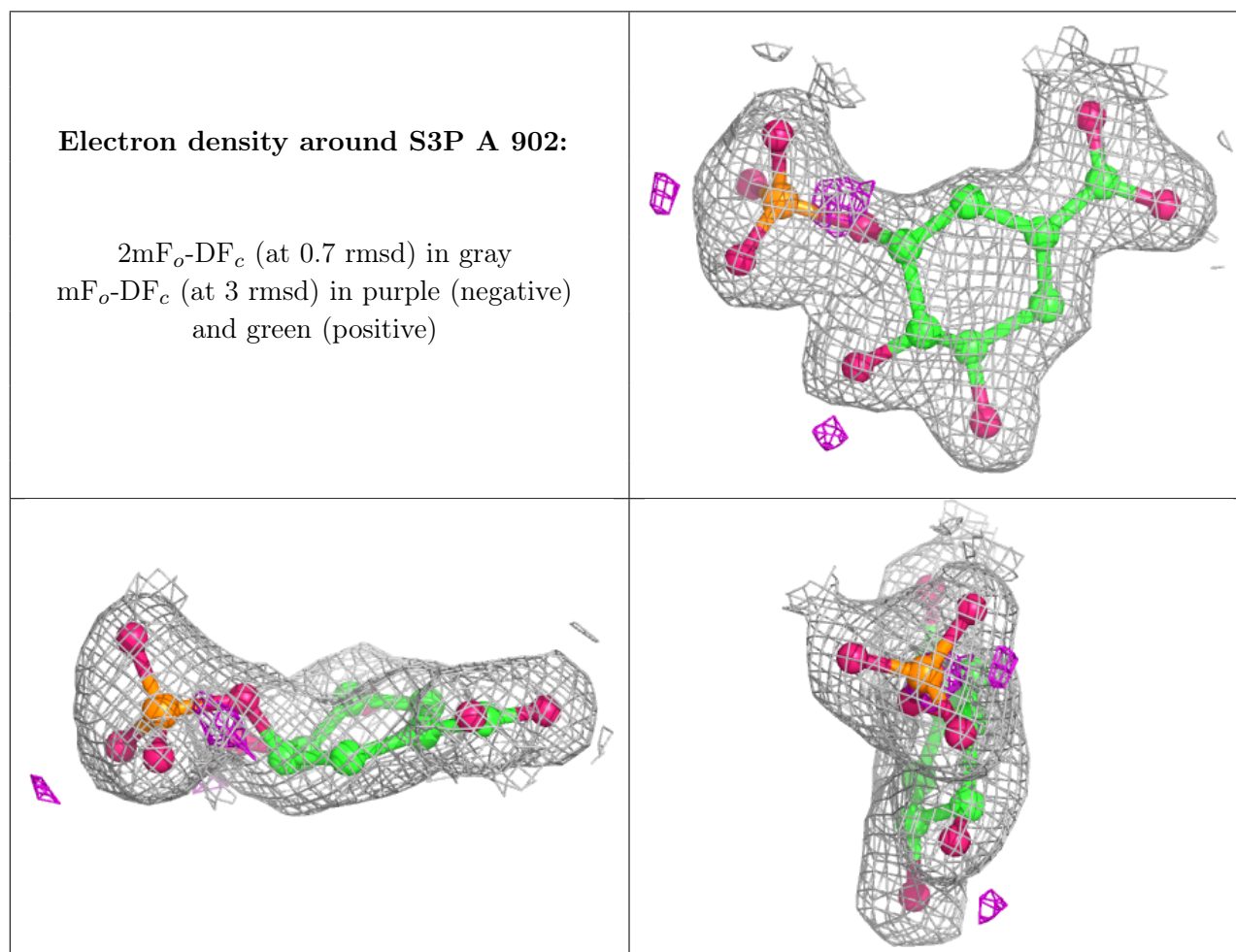
There are no monosaccharides in this entry.

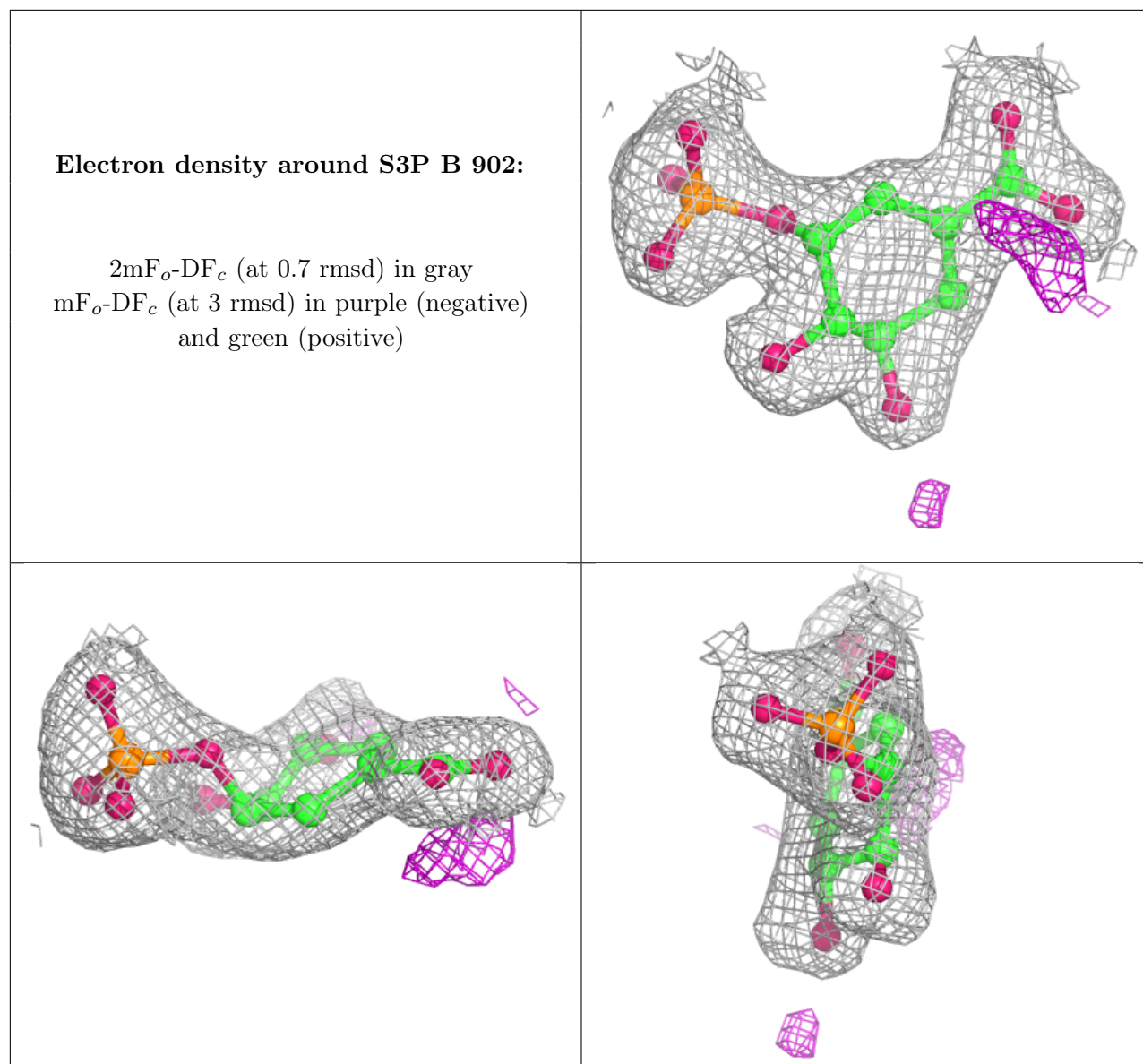
6.4 Ligands [i](#)

In the following table, the Atoms column lists the number of modelled atoms in the group and the number defined in the chemical component dictionary. The B-factors column lists the minimum, median, 95th percentile and maximum values of B factors of atoms in the group. The column labelled 'Q< 0.9' lists the number of atoms with occupancy less than 0.9.

Mol	Type	Chain	Res	Atoms	RSCC	RSR	B-factors(Å ²)	Q<0.9
2	TRS	B	901	8/8	0.74	0.20	30,35,53,55	0
2	TRS	A	901	8/8	0.79	0.25	26,39,47,48	0
3	S3P	A	902	16/16	0.96	0.09	29,36,44,47	0
3	S3P	B	902	16/16	0.96	0.08	26,39,43,44	0

The following is a graphical depiction of the model fit to experimental electron density of all instances of the Ligand of Interest. In addition, ligands with molecular weight > 250 and outliers as shown on the geometry validation Tables will also be included. Each fit is shown from different orientation to approximate a three-dimensional view.





6.5 Other polymers [i](#)

There are no such residues in this entry.