



# wwPDB X-ray Structure Validation Summary Report ⓘ

Sep 23, 2023 – 05:26 PM EDT

PDB ID : 5T88  
Title : Prolyl oligopeptidase from *Pyrococcus furiosus*  
Authors : Ellis-Guardiola, K.; Lewis, J.; Sukumar, N.  
Deposited on : 2016-09-06  
Resolution : 1.90 Å(reported)

This is a wwPDB X-ray Structure Validation Summary Report for a publicly released PDB entry.

We welcome your comments at [validation@mail.wwpdb.org](mailto:validation@mail.wwpdb.org)

A user guide is available at

<https://www.wwpdb.org/validation/2017/XrayValidationReportHelp>

with specific help available everywhere you see the ⓘ symbol.

The types of validation reports are described at

<http://www.wwpdb.org/validation/2017/FAQs#types>.

---

The following versions of software and data (see [references ⓘ](#)) were used in the production of this report:

MolProbity : 4.02b-467  
Mogul : 1.8.5 (274361), CSD as541be (2020)  
Xtrriage (Phenix) : 1.13  
EDS : 2.35.1  
Percentile statistics : 20191225.v01 (using entries in the PDB archive December 25th 2019)  
Refmac : 5.8.0158  
CCP4 : 7.0.044 (Gargrove)  
Ideal geometry (proteins) : Engh & Huber (2001)  
Ideal geometry (DNA, RNA) : Parkinson et al. (1996)  
Validation Pipeline (wwPDB-VP) : 2.35.1

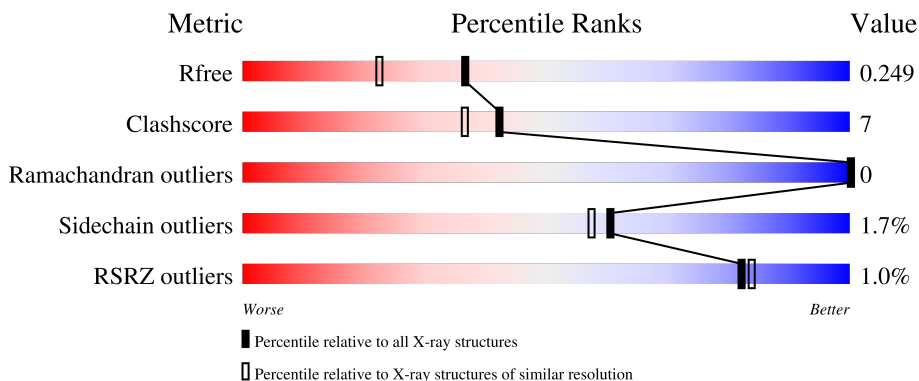
# 1 Overall quality at a glance

The following experimental techniques were used to determine the structure:

*X-RAY DIFFRACTION*

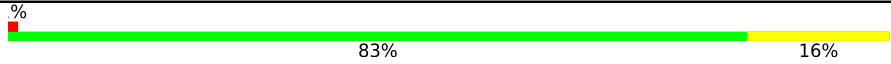

The reported resolution of this entry is 1.90 Å.

Percentile scores (ranging between 0-100) for global validation metrics of the entry are shown in the following graphic. The table shows the number of entries on which the scores are based.



Metric	Whole archive (#Entries)	Similar resolution (#Entries, resolution range(Å))
$R_{free}$	130704	6207 (1.90-1.90)
Clashscore	141614	6847 (1.90-1.90)
Ramachandran outliers	138981	6760 (1.90-1.90)
Sidechain outliers	138945	6760 (1.90-1.90)
RSRZ outliers	127900	6082 (1.90-1.90)

The table below summarises the geometric issues observed across the polymeric chains and their fit to the electron density. The red, orange, yellow and green segments of the lower bar indicate the fraction of residues that contain outliers for  $\geq 3$ , 2, 1 and 0 types of geometric quality criteria respectively. A grey segment represents the fraction of residues that are not modelled. The numeric value for each fraction is indicated below the corresponding segment, with a dot representing fractions  $\leq 5\%$ . The upper red bar (where present) indicates the fraction of residues that have poor fit to the electron density. The numeric value is given above the bar.

Mol	Chain	Length	Quality of chain
1	A	616	 83% 16%
1	B	616	 86% 13%

The following table lists non-polymeric compounds, carbohydrate monomers and non-standard residues in protein, DNA, RNA chains that are outliers for geometric or electron-density-fit criteria:

Mol	Type	Chain	Res	Chirality	Geometry	Clashes	Electron density
4	PRO	B	710	-	-	X	-

## 2 Entry composition [i](#)

There are 5 unique types of molecules in this entry. The entry contains 21236 atoms, of which 10150 are hydrogens and 0 are deuteriums.

In the tables below, the ZeroOcc column contains the number of atoms modelled with zero occupancy, the AltConf column contains the number of residues with at least one atom in alternate conformation and the Trace column contains the number of residues modelled with at most 2 atoms.

- Molecule 1 is a protein called Prolyl endopeptidase.

Mol	Chain	Residues	Atoms						ZeroOcc	AltConf	Trace
			Total	C	H	N	O	S			
1	A	616	10003	3243	4994	829	924	13	54	0	0
1	B	616	10005	3243	4996	829	924	13	12	0	0

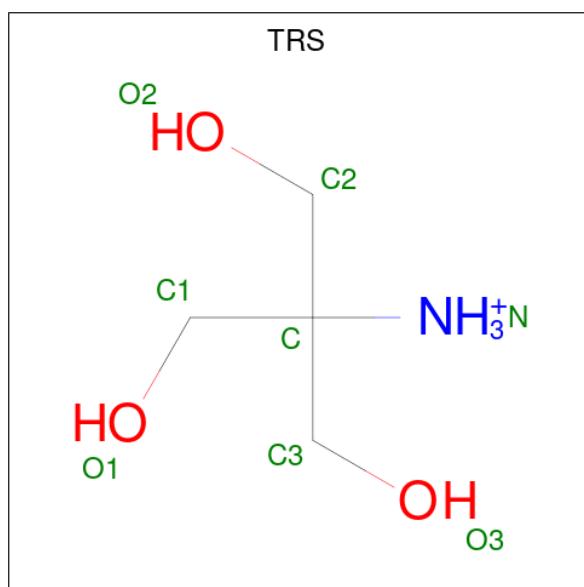
There are 2 discrepancies between the modelled and reference sequences:

Chain	Residue	Modelled	Actual	Comment	Reference
A	464	LEU	ARG	variant	UNP Q51714
B	464	LEU	ARG	variant	UNP Q51714

- Molecule 2 is CHLORIDE ION (three-letter code: CL) (formula: Cl).

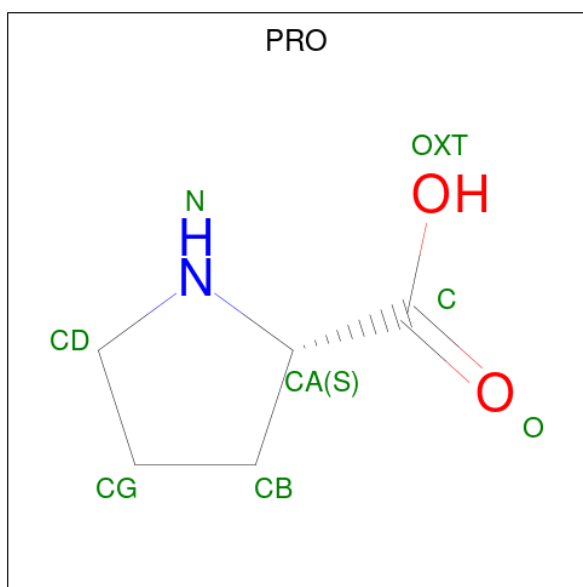
Mol	Chain	Residues	Atoms		ZeroOcc	AltConf
2	A	2	Total	Cl	0	0
			2	2		
2	B	2	Total	Cl	0	0
			2	2		

- Molecule 3 is 2-AMINO-2-HYDROXYMETHYL-PROPANE-1,3-DIOL (three-letter code: TRS) (formula: C<sub>4</sub>H<sub>12</sub>NO<sub>3</sub>).



Mol	Chain	Residues	Atoms					ZeroOcc	AltConf
			Total	C	H	N	O		
3	A	1	20	4	12	1	3	0	0
3	A	1	20	4	12	1	3	0	0
3	A	1	20	4	12	1	3	0	0
3	A	1	20	4	12	1	3	0	0
3	A	1	20	4	12	1	3	0	0
3	B	1	20	4	12	1	3	0	0
3	B	1	20	4	12	1	3	0	0
3	B	1	20	4	12	1	3	0	0
3	B	1	20	4	12	1	3	0	0
3	B	1	20	4	12	1	3	0	0

- Molecule 4 is PROLINE (three-letter code: PRO) (formula: C<sub>5</sub>H<sub>9</sub>NO<sub>2</sub>).



Mol	Chain	Residues	Atoms				ZeroOcc	AltConf	
4	A	1	Total	C	H	N	O	0	0
			14	5	7	1	1		
4	A	1	Total	C	H	N	O	0	0
			15	5	7	1	2		
4	B	1	Total	C	H	N	O	0	0
			14	5	7	1	1		
4	B	1	Total	C	H	N	O	0	0
			15	5	7	1	2		

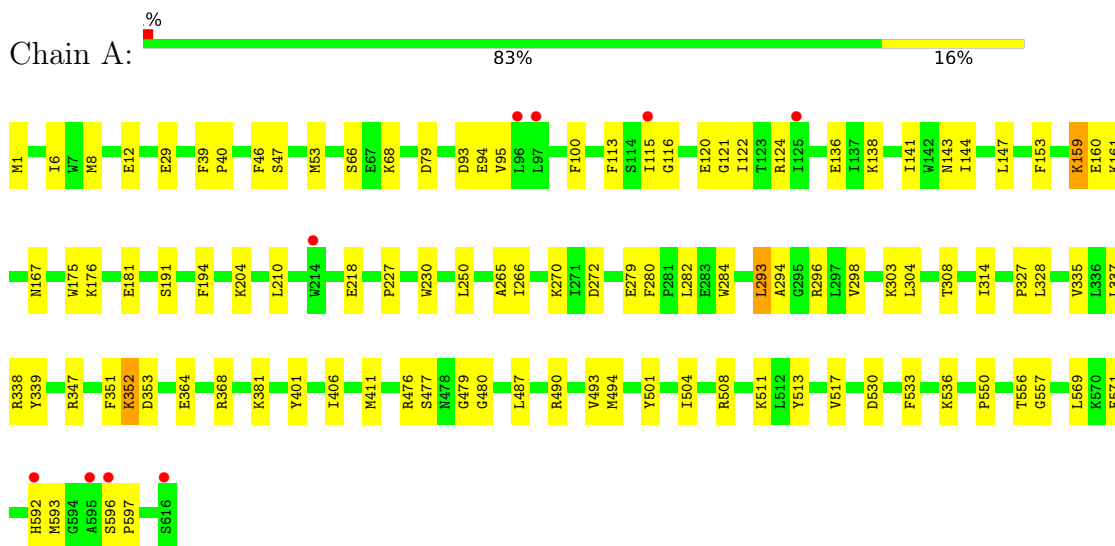
- Molecule 5 is water.

Mol	Chain	Residues	Atoms		ZeroOcc	AltConf
5	A	460	Total	O	0	0
			460	460		
5	B	486	Total	O	0	0
			486	486		

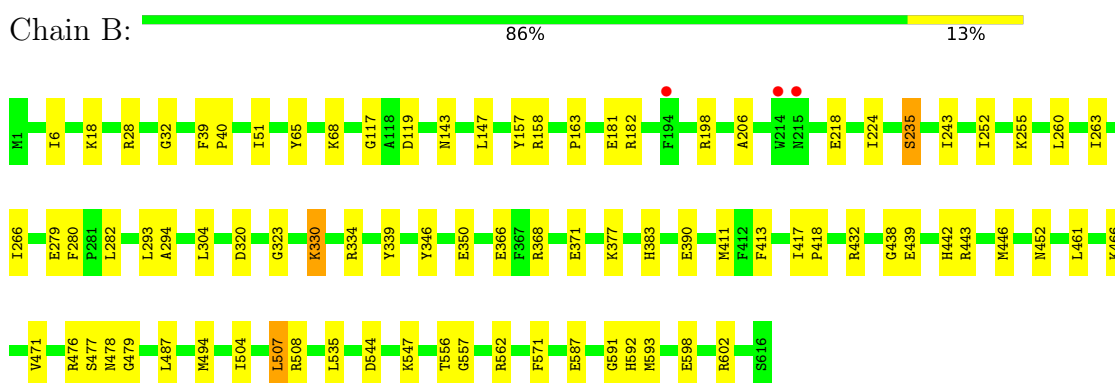
### 3 Residue-property plots [i](#)

These plots are drawn for all protein, RNA, DNA and oligosaccharide chains in the entry. The first graphic for a chain summarises the proportions of the various outlier classes displayed in the second graphic. The second graphic shows the sequence view annotated by issues in geometry and electron density. Residues are color-coded according to the number of geometric quality criteria for which they contain at least one outlier: green = 0, yellow = 1, orange = 2 and red = 3 or more. A red dot above a residue indicates a poor fit to the electron density ( $RSRZ > 2$ ). Stretches of 2 or more consecutive residues without any outlier are shown as a green connector. Residues present in the sample, but not in the model, are shown in grey.

- Molecule 1: Prolyl endopeptidase



- Molecule 1: Prolyl endopeptidase



## 4 Data and refinement statistics i

Property	Value	Source
Space group	P 1 21 1	Depositor
Cell constants a, b, c, $\alpha$ , $\beta$ , $\gamma$	55.53Å 176.76Å 57.90Å 90.00° 106.03° 90.00°	Depositor
Resolution (Å)	47.09 – 1.90 47.09 – 1.90	Depositor EDS
% Data completeness (in resolution range)	99.5 (47.09-1.90) 93.1 (47.09-1.90)	Depositor EDS
$R_{merge}$	0.17	Depositor
$R_{sym}$	(Not available)	Depositor
$\langle I/\sigma(I) \rangle$ <sup>1</sup>	1.64 (at 1.90Å)	Xtrriage
Refinement program	PHENIX (1.10_2155: ???)	Depositor
R, $R_{free}$	0.193 , 0.247 0.195 , 0.249	Depositor DCC
$R_{free}$ test set	2000 reflections (2.40%)	wwPDB-VP
Wilson B-factor (Å <sup>2</sup> )	22.9	Xtrriage
Anisotropy	0.274	Xtrriage
Bulk solvent $k_{sol}$ (e/Å <sup>3</sup> ), $B_{sol}$ (Å <sup>2</sup> )	0.40 , 50.6	EDS
L-test for twinning <sup>2</sup>	$\langle  L  \rangle = 0.44$ , $\langle L^2 \rangle = 0.26$	Xtrriage
Estimated twinning fraction	0.087 for l,-k,h	Xtrriage
$F_o, F_c$ correlation	0.94	EDS
Total number of atoms	21236	wwPDB-VP
Average B, all atoms (Å <sup>2</sup> )	34.0	wwPDB-VP

Xtrriage's analysis on translational NCS is as follows: *The largest off-origin peak in the Patterson function is 4.31% of the height of the origin peak. No significant pseudotranslation is detected.*

<sup>1</sup>Intensities estimated from amplitudes.

<sup>2</sup>Theoretical values of  $\langle |L| \rangle$ ,  $\langle L^2 \rangle$  for acentric reflections are 0.5, 0.333 respectively for untwinned datasets, and 0.375, 0.2 for perfectly twinned datasets.



## 5 Model quality

### 5.1 Standard geometry

Bond lengths and bond angles in the following residue types are not validated in this section: TRS, CL

The Z score for a bond length (or angle) is the number of standard deviations the observed value is removed from the expected value. A bond length (or angle) with  $|Z| > 5$  is considered an outlier worth inspection. RMSZ is the root-mean-square of all Z scores of the bond lengths (or angles).

Mol	Chain	Bond lengths		Bond angles	
		RMSZ	# Z  >5	RMSZ	# Z  >5
1	A	0.61	0/5134	0.72	0/6931
1	B	0.63	0/5134	0.73	0/6931
All	All	0.62	0/10268	0.72	0/13862

There are no bond length outliers.

There are no bond angle outliers.

There are no chirality outliers.

There are no planarity outliers.

### 5.2 Too-close contacts

In the following table, the Non-H and H(model) columns list the number of non-hydrogen atoms and hydrogen atoms in the chain respectively. The H(added) column lists the number of hydrogen atoms added and optimized by MolProbity. The Clashes column lists the number of clashes within the asymmetric unit, whereas Symm-Clashes lists symmetry-related clashes.

Mol	Chain	Non-H	H(model)	H(added)	Clashes	Symm-Clashes
1	A	5009	4994	4994	79	0
1	B	5009	4996	4994	60	0
2	A	2	0	0	0	0
2	B	2	0	0	0	0
3	A	40	60	60	3	0
3	B	48	72	72	1	0
4	A	15	14	14	2	0
4	B	15	14	14	7	0
5	A	460	0	0	6	4
5	B	486	0	0	5	3
All	All	11086	10150	10148	139	4

The all-atom clashscore is defined as the number of clashes found per 1000 atoms (including hydrogen atoms). The all-atom clashscore for this structure is 7.

The worst 5 of 139 close contacts within the same asymmetric unit are listed below, sorted by their clash magnitude.

Atom-1	Atom-2	Interatomic distance (Å)	Clash overlap (Å)
1:B:477:SER:HB2	4:B:710:PRO:HB3	1.61	0.83
1:A:477:SER:HB2	4:A:709:PRO:HB3	1.69	0.74
1:B:51:ILE:HG12	1:B:65:TYR:CE2	2.25	0.71
1:A:368:ARG:NH2	5:A:804:HOH:O	2.26	0.69
1:A:204:LYS:NZ	5:A:805:HOH:O	2.28	0.67

All (4) symmetry-related close contacts are listed below. The label for Atom-2 includes the symmetry operator and encoded unit-cell translations to be applied.

Atom-1	Atom-2	Interatomic distance (Å)	Clash overlap (Å)
5:A:1091:HOH:O	5:B:847:HOH:O[2_11410]	2.08	0.12
5:A:1247:HOH:O	5:B:1265:HOH:O[2_1149]	2.09	0.11
5:A:911:HOH:O	5:A:988:HOH:O[1_554]	2.18	0.02
5:A:1068:HOH:O	5:B:1009:HOH:O[1_655]	2.19	0.01

## 5.3 Torsion angles [i](#)

### 5.3.1 Protein backbone [i](#)

In the following table, the Percentiles column shows the percent Ramachandran outliers of the chain as a percentile score with respect to all X-ray entries followed by that with respect to entries of similar resolution.

The Analysed column shows the number of residues for which the backbone conformation was analysed, and the total number of residues.

Mol	Chain	Analysed	Favoured	Allowed	Outliers	Percentiles	
1	A	614/616 (100%)	601 (98%)	13 (2%)	0	100	100
1	B	614/616 (100%)	604 (98%)	10 (2%)	0	100	100
All	All	1228/1232 (100%)	1205 (98%)	23 (2%)	0	100	100

There are no Ramachandran outliers to report.

### 5.3.2 Protein sidechains [i](#)

In the following table, the Percentiles column shows the percent sidechain outliers of the chain as a percentile score with respect to all X-ray entries followed by that with respect to entries of similar resolution.

The Analysed column shows the number of residues for which the sidechain conformation was analysed, and the total number of residues.

Mol	Chain	Analysed	Rotameric	Outliers	Percentiles	
1	A	534/534 (100%)	523 (98%)	11 (2%)	53	48
1	B	534/534 (100%)	528 (99%)	6 (1%)	73	73
All	All	1068/1068 (100%)	1051 (98%)	17 (2%)	60	60

5 of 17 residues with a non-rotameric sidechain are listed below:

Mol	Chain	Res	Type
1	B	330	LYS
1	B	507	LEU
1	A	352	LYS
1	A	517	VAL
1	A	592	HIS

Sometimes sidechains can be flipped to improve hydrogen bonding and reduce clashes. There are no such sidechains identified.

### 5.3.3 RNA [i](#)

There are no RNA molecules in this entry.

## 5.4 Non-standard residues in protein, DNA, RNA chains [i](#)

There are no non-standard protein/DNA/RNA residues in this entry.

## 5.5 Carbohydrates [i](#)

There are no monosaccharides in this entry.

## 5.6 Ligand geometry [i](#)

Of 19 ligands modelled in this entry, 4 are monoatomic - leaving 15 for Mogul analysis.

In the following table, the Counts columns list the number of bonds (or angles) for which Mogul statistics could be retrieved, the number of bonds (or angles) that are observed in the model and the number of bonds (or angles) that are defined in the Chemical Component Dictionary. The Link column lists molecule types, if any, to which the group is linked. The Z score for a bond length (or angle) is the number of standard deviations the observed value is removed from the expected value. A bond length (or angle) with  $|Z| > 2$  is considered an outlier worth inspection. RMSZ is the root-mean-square of all Z scores of the bond lengths (or angles).

Mol	Type	Chain	Res	Link	Bond lengths			Bond angles		
					Counts	RMSZ	# Z  > 2	Counts	RMSZ	# Z  > 2
3	TRS	A	707	-	7,7,7	0.28	0	9,9,9	0.85	0
3	TRS	A	704	-	7,7,7	0.31	0	9,9,9	0.56	0
4	PRO	B	709	4	5,7,8	0.66	0	7,8,10	2.41	4 (57%)
4	PRO	A	709	4	8,8,8	0.92	0	10,10,10	1.61	3 (30%)
3	TRS	B	707	-	7,7,7	0.50	0	9,9,9	1.08	1 (11%)
3	TRS	B	704	-	7,7,7	0.40	0	9,9,9	0.81	0
3	TRS	B	703	-	7,7,7	0.46	0	9,9,9	0.70	0
4	PRO	A	708	4	5,7,8	0.71	0	7,8,10	1.11	1 (14%)
3	TRS	B	705	-	7,7,7	0.40	0	9,9,9	1.27	2 (22%)
3	TRS	B	706	-	7,7,7	0.22	0	9,9,9	1.01	0
3	TRS	A	706	-	7,7,7	0.41	0	9,9,9	0.63	0
4	PRO	B	710	4	8,8,8	1.04	0	10,10,10	1.83	3 (30%)
3	TRS	A	703	-	7,7,7	0.29	0	9,9,9	0.44	0
3	TRS	B	708	-	7,7,7	0.41	0	9,9,9	0.73	0
3	TRS	A	705	-	7,7,7	0.52	0	9,9,9	1.24	0

In the following table, the Chirals column lists the number of chiral outliers, the number of chiral centers analysed, the number of these observed in the model and the number defined in the Chemical Component Dictionary. Similar counts are reported in the Torsion and Rings columns. '-' means no outliers of that kind were identified.

Mol	Type	Chain	Res	Link	Chirals	Torsions	Rings
3	TRS	A	707	-	-	3/9/9/9	-
3	TRS	A	704	-	-	3/9/9/9	-
4	PRO	B	709	4	-	0/0/9/11	0/1/1/1
4	PRO	A	709	4	-	4/4/11/11	0/1/1/1
3	TRS	B	707	-	-	4/9/9/9	-
3	TRS	B	704	-	-	3/9/9/9	-
3	TRS	B	703	-	-	6/9/9/9	-
4	PRO	A	708	4	-	0/0/9/11	0/1/1/1
3	TRS	B	705	-	-	4/9/9/9	-
3	TRS	B	706	-	-	6/9/9/9	-

Continued on next page...

Continued from previous page...

Mol	Type	Chain	Res	Link	Chirals	Torsions	Rings
3	TRS	A	706	-	-	3/9/9/9	-
4	PRO	B	710	4	-	4/4/11/11	0/1/1/1
3	TRS	A	703	-	-	0/9/9/9	-
3	TRS	B	708	-	-	3/9/9/9	-
3	TRS	A	705	-	-	1/9/9/9	-

There are no bond length outliers.

The worst 5 of 14 bond angle outliers are listed below:

Mol	Chain	Res	Type	Atoms	Z	Observed(°)	Ideal(°)
4	B	709	PRO	O-C-CA	-3.93	114.49	124.78
4	B	709	PRO	CB-CA-C	-3.48	107.91	112.70
4	B	710	PRO	C-CA-N	2.98	118.47	106.73
4	B	709	PRO	CD-N-CA	-2.94	99.17	107.08
4	B	710	PRO	CB-CA-N	-2.82	96.56	104.88

There are no chirality outliers.

5 of 44 torsion outliers are listed below:

Mol	Chain	Res	Type	Atoms
3	A	704	TRS	C1-C-C2-O2
3	A	704	TRS	C3-C-C2-O2
3	A	706	TRS	N-C-C1-O1
3	A	707	TRS	N-C-C2-O2
3	B	705	TRS	C1-C-C2-O2

There are no ring outliers.

7 monomers are involved in 13 short contacts:

Mol	Chain	Res	Type	Clashes	Symm-Clashes
3	A	707	TRS	1	0
4	B	709	PRO	1	0
4	A	709	PRO	2	0
3	B	703	TRS	1	0
4	B	710	PRO	6	0
3	A	703	TRS	1	0
3	A	705	TRS	1	0

## 5.7 Other polymers [i](#)

There are no such residues in this entry.

## 5.8 Polymer linkage issues [i](#)

There are no chain breaks in this entry.

## 6 Fit of model and data [i](#)

### 6.1 Protein, DNA and RNA chains [i](#)

In the following table, the column labelled ‘#RSRZ > 2’ contains the number (and percentage) of RSRZ outliers, followed by percent RSRZ outliers for the chain as percentile scores relative to all X-ray entries and entries of similar resolution. The OWAB column contains the minimum, median, 95<sup>th</sup> percentile and maximum values of the occupancy-weighted average B-factor per residue. The column labelled ‘Q < 0.9’ lists the number of (and percentage) of residues with an average occupancy less than 0.9.

Mol	Chain	Analysed	<RSRZ>	#RSRZ>2	OWAB(Å <sup>2</sup> )	Q<0.9
1	A	614/616 (99%)	-0.26	9 (1%) 73 76	16, 29, 52, 75	4 (0%)
1	B	616/616 (100%)	-0.35	3 (0%) 91 92	14, 27, 45, 60	3 (0%)
All	All	1230/1232 (99%)	-0.30	12 (0%) 82 84	14, 28, 48, 75	7 (0%)

The worst 5 of 12 RSRZ outliers are listed below:

Mol	Chain	Res	Type	RSRZ
1	B	214	TRP	4.7
1	A	595	ALA	4.1
1	A	616	SER	4.0
1	A	592	HIS	3.5
1	A	97	LEU	3.1

### 6.2 Non-standard residues in protein, DNA, RNA chains [i](#)

There are no non-standard protein/DNA/RNA residues in this entry.

### 6.3 Carbohydrates [i](#)

There are no monosaccharides in this entry.

### 6.4 Ligands [i](#)

In the following table, the Atoms column lists the number of modelled atoms in the group and the number defined in the chemical component dictionary. The B-factors column lists the minimum, median, 95<sup>th</sup> percentile and maximum values of B factors of atoms in the group. The column labelled ‘Q < 0.9’ lists the number of atoms with occupancy less than 0.9.

Mol	Type	Chain	Res	Atoms	RSCC	RSR	B-factors(Å <sup>2</sup> )	Q<0.9
4	PRO	B	709	7/8	0.63	0.28	55,63,71,71	0
4	PRO	A	708	7/8	0.67	0.26	53,62,71,71	0
3	TRS	A	704	8/8	0.73	0.16	41,52,62,63	0
4	PRO	A	709	8/8	0.74	0.19	35,46,57,60	0
3	TRS	B	706	8/8	0.74	0.18	45,60,72,72	0
3	TRS	A	707	8/8	0.76	0.16	43,52,66,70	0
3	TRS	B	704	8/8	0.80	0.19	41,53,60,65	0
4	PRO	B	710	8/8	0.81	0.26	31,50,65,72	0
3	TRS	B	708	8/8	0.85	0.15	35,45,56,67	0
3	TRS	B	705	8/8	0.87	0.12	36,45,49,57	0
3	TRS	A	705	8/8	0.88	0.13	34,48,61,61	0
3	TRS	A	703	8/8	0.90	0.12	21,30,45,54	0
3	TRS	B	707	8/8	0.91	0.16	35,51,73,88	0
3	TRS	B	703	8/8	0.92	0.16	30,46,67,80	0
3	TRS	A	706	8/8	0.94	0.19	34,53,64,73	0
2	CL	B	702	1/1	0.94	0.05	45,45,45,45	0
2	CL	A	701	1/1	0.96	0.41	67,67,67,67	0
2	CL	A	702	1/1	0.98	0.10	45,45,45,45	0
2	CL	B	701	1/1	1.00	0.04	19,19,19,19	0

## 6.5 Other polymers [i](#)

There are no such residues in this entry.