



# Full wwPDB X-ray Structure Validation Report ⓘ

Apr 4, 2022 – 08:26 PM EDT

PDB ID : 5T7D  
Title : Crystal structure of Streptomyces hygrosopicus bialaphos resistance (BAR) protein in complex with acetyl coenzyme A  
Authors : Christ, B.; Weng, J.K.  
Deposited on : 2016-09-04  
Resolution : 1.40 Å(reported)

This is a Full wwPDB X-ray Structure Validation Report for a publicly released PDB entry.

We welcome your comments at [validation@mail.wwpdb.org](mailto:validation@mail.wwpdb.org)

A user guide is available at

<https://www.wwpdb.org/validation/2017/XrayValidationReportHelp>

with specific help available everywhere you see the ⓘ symbol.

---

The following versions of software and data (see [references ⓘ](#)) were used in the production of this report:

MolProbity : **FAILED**  
Mogul : 1.8.5 (274361), CSD as541be (2020)  
Xtrriage (Phenix) : 1.13  
EDS : **FAILED**  
buster-report : 1.1.7 (2018)  
Percentile statistics : 20191225.v01 (using entries in the PDB archive December 25th 2019)  
Ideal geometry (proteins) : Engh & Huber (2001)  
Ideal geometry (DNA, RNA) : Parkinson et al. (1996)  
Validation Pipeline (wwPDB-VP) : 2.27

## 1 Overall quality at a glance

The following experimental techniques were used to determine the structure:

*X-RAY DIFFRACTION*

The reported resolution of this entry is 1.40 Å.

There are no overall percentile quality scores available for this entry.

MolProbity and EDS failed to run properly - the sequence quality summary graphics cannot be shown.

## 2 Entry composition [i](#)

There are 4 unique types of molecules in this entry. The entry contains 12627 atoms, of which 5655 are hydrogens and 0 are deuteriums.

In the tables below, the ZeroOcc column contains the number of atoms modelled with zero occupancy, the AltConf column contains the number of residues with at least one atom in alternate conformation and the Trace column contains the number of residues modelled with at most 2 atoms.

- Molecule 1 is a protein called Phosphinothricin N-acetyltransferase.

Mol	Chain	Residues	Atoms						ZeroOcc	AltConf	Trace
			Total	C	H	N	O	S			
1	A	173	2798	906	1380	254	254	4	0	5	0
1	B	173	2743	892	1348	246	253	4	0	2	0
1	C	174	2808	912	1383	252	256	5	0	5	0
1	D	174	2809	912	1384	251	256	6	0	5	0

There are 24 discrepancies between the modelled and reference sequences:

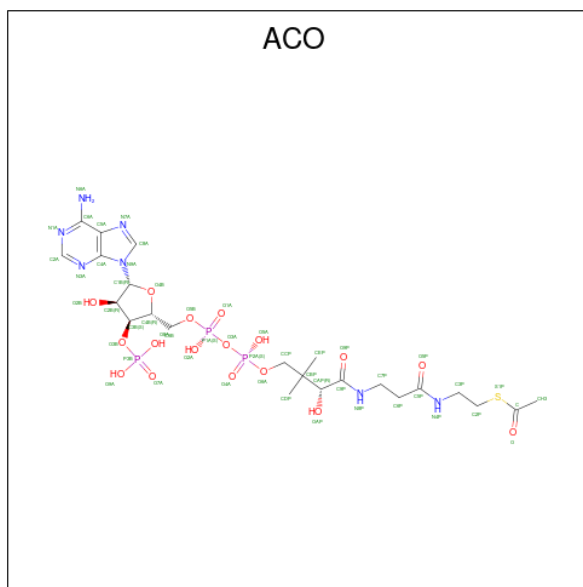
Chain	Residue	Modelled	Actual	Comment	Reference
A	-5	GLY	-	expression tag	UNP P16426
A	-4	ALA	-	expression tag	UNP P16426
A	-3	MET	-	expression tag	UNP P16426
A	-2	ASP	-	expression tag	UNP P16426
A	-1	PRO	-	expression tag	UNP P16426
A	0	PHE	-	expression tag	UNP P16426
B	-5	GLY	-	expression tag	UNP P16426
B	-4	ALA	-	expression tag	UNP P16426
B	-3	MET	-	expression tag	UNP P16426
B	-2	ASP	-	expression tag	UNP P16426
B	-1	PRO	-	expression tag	UNP P16426
B	0	PHE	-	expression tag	UNP P16426
C	-5	GLY	-	expression tag	UNP P16426
C	-4	ALA	-	expression tag	UNP P16426
C	-3	MET	-	expression tag	UNP P16426
C	-2	ASP	-	expression tag	UNP P16426
C	-1	PRO	-	expression tag	UNP P16426
C	0	PHE	-	expression tag	UNP P16426
D	-5	GLY	-	expression tag	UNP P16426
D	-4	ALA	-	expression tag	UNP P16426
D	-3	MET	-	expression tag	UNP P16426

*Continued on next page...*

Continued from previous page...

Chain	Residue	Modelled	Actual	Comment	Reference
D	-2	ASP	-	expression tag	UNP P16426
D	-1	PRO	-	expression tag	UNP P16426
D	0	PHE	-	expression tag	UNP P16426

- Molecule 2 is ACETYL COENZYME \*A (three-letter code: ACO) (formula: C<sub>23</sub>H<sub>38</sub>N<sub>7</sub>O<sub>17</sub>P<sub>3</sub>S).



Mol	Chain	Residues	Atoms							ZeroOcc	AltConf	
			Total	C	H	N	O	P	S			
2	A	1	Total	85	23	34	7	17	3	1	0	0
2	B	1	Total	85	23	34	7	17	3	1	0	0
2	C	1	Total	85	23	34	7	17	3	1	0	0
2	D	1	Total	85	23	34	7	17	3	1	0	0

- Molecule 3 is ACETATE ION (three-letter code: ACT) (formula: C<sub>2</sub>H<sub>3</sub>O<sub>2</sub>).



Mol	Chain	Residues	Atoms				ZeroOcc	AltConf
3	A	1	Total	C	H	O	0	0
			7	2	3	2		
3	A	1	Total	C	H	O	0	0
			7	2	3	2		
3	B	1	Total	C	H	O	0	0
			7	2	3	2		
3	B	1	Total	C	H	O	0	0
			7	2	3	2		
3	C	1	Total	C	H	O	0	0
			7	2	3	2		
3	C	1	Total	C	H	O	0	0
			7	2	3	2		
3	D	1	Total	C	H	O	0	0
			7	2	3	2		
3	D	1	Total	C	H	O	0	0
			7	2	3	2		

- Molecule 4 is water.

Mol	Chain	Residues	Atoms		ZeroOcc	AltConf
4	A	273	Total	O	0	0
			273	273		
4	B	280	Total	O	0	0
			280	280		
4	C	280	Total	O	0	0
			280	280		
4	D	240	Total	O	0	0
			240	240		

MolProbity and EDS failed to run properly - this section is therefore empty.

### 3 Data and refinement statistics

EDS failed to run properly - this section is therefore incomplete.

Property	Value	Source
Space group	P 1 21 1	Depositor
Cell constants a, b, c, $\alpha$ , $\beta$ , $\gamma$	65.10Å 71.50Å 84.05Å 90.00° 104.33° 90.00°	Depositor
Resolution (Å)	44.79 – 1.40	Depositor
% Data completeness (in resolution range)	81.6 (44.79-1.40)	Depositor
$R_{merge}$	(Not available)	Depositor
$R_{sym}$	(Not available)	Depositor
$\langle I/\sigma(I) \rangle$ <sup>1</sup>	1.52 (at 1.40Å)	Xtrriage
Refinement program	PHENIX (dev_2499: ???)	Depositor
R, $R_{free}$	0.152 , 0.192	Depositor
Wilson B-factor (Å <sup>2</sup> )	14.4	Xtrriage
Anisotropy	0.384	Xtrriage
L-test for twinning <sup>2</sup>	$\langle  L  \rangle = 0.49$ , $\langle L^2 \rangle = 0.32$	Xtrriage
Estimated twinning fraction	No twinning to report.	Xtrriage
Total number of atoms	12627	wwPDB-VP
Average B, all atoms (Å <sup>2</sup> )	21.0	wwPDB-VP

Xtrriage's analysis on translational NCS is as follows: *The analyses of the Patterson function reveals a significant off-origin peak that is 37.43 % of the origin peak, indicating pseudo-translational symmetry. The chance of finding a peak of this or larger height randomly in a structure without pseudo-translational symmetry is equal to 4.2935e-04. The detected translational NCS is most likely also responsible for the elevated intensity ratio.*

<sup>1</sup>Intensities estimated from amplitudes.

<sup>2</sup>Theoretical values of  $\langle |L| \rangle$ ,  $\langle L^2 \rangle$  for acentric reflections are 0.5, 0.333 respectively for untwinned datasets, and 0.375, 0.2 for perfectly twinned datasets.

## 4 Model quality [i](#)

### 4.1 Standard geometry [i](#)

MolProbity failed to run properly - this section is therefore empty.

### 4.2 Too-close contacts [i](#)

MolProbity failed to run properly - this section is therefore empty.

### 4.3 Torsion angles [i](#)

#### 4.3.1 Protein backbone [i](#)

MolProbity failed to run properly - this section is therefore empty.

#### 4.3.2 Protein sidechains [i](#)

MolProbity failed to run properly - this section is therefore empty.

#### 4.3.3 RNA [i](#)

MolProbity failed to run properly - this section is therefore empty.

### 4.4 Non-standard residues in protein, DNA, RNA chains [i](#)

There are no non-standard protein/DNA/RNA residues in this entry.

### 4.5 Carbohydrates [i](#)

There are no monosaccharides in this entry.

### 4.6 Ligand geometry [i](#)

12 ligands are modelled in this entry.

In the following table, the Counts columns list the number of bonds (or angles) for which Mogul statistics could be retrieved, the number of bonds (or angles) that are observed in the model and the number of bonds (or angles) that are defined in the Chemical Component Dictionary. The Link column lists molecule types, if any, to which the group is linked. The Z score for a bond



length (or angle) is the number of standard deviations the observed value is removed from the expected value. A bond length (or angle) with  $|Z| > 2$  is considered an outlier worth inspection. RMSZ is the root-mean-square of all Z scores of the bond lengths (or angles).

Mol	Type	Chain	Res	Link	Bond lengths			Bond angles		
					Counts	RMSZ	# Z  > 2	Counts	RMSZ	# Z  > 2
3	ACT	B	802	-	1,3,3	0.93	0	0,3,3	-	-
2	ACO	A	800	-	45,53,53	3.59	10 (22%)	56,79,79	1.84	8 (14%)
3	ACT	C	801	-	1,3,3	1.07	0	0,3,3	-	-
3	ACT	B	801	-	1,3,3	1.24	0	0,3,3	-	-
2	ACO	C	800	-	45,53,53	3.77	9 (20%)	56,79,79	1.74	4 (7%)
3	ACT	C	802	-	1,3,3	1.14	0	0,3,3	-	-
3	ACT	D	802	-	1,3,3	0.48	0	0,3,3	-	-
3	ACT	A	802	-	1,3,3	0.80	0	0,3,3	-	-
3	ACT	A	801	-	1,3,3	1.22	0	0,3,3	-	-
3	ACT	D	801	-	1,3,3	1.10	0	0,3,3	-	-
2	ACO	D	800	-	45,53,53	3.72	9 (20%)	56,79,79	1.81	5 (8%)
2	ACO	B	800	-	45,53,53	3.65	9 (20%)	56,79,79	1.76	4 (7%)

In the following table, the Chirals column lists the number of chiral outliers, the number of chiral centers analysed, the number of these observed in the model and the number defined in the Chemical Component Dictionary. Similar counts are reported in the Torsion and Rings columns. '-' means no outliers of that kind were identified.

Mol	Type	Chain	Res	Link	Chirals	Torsions	Rings
2	ACO	D	800	-	-	7/47/67/67	0/3/3/3
2	ACO	B	800	-	-	7/47/67/67	0/3/3/3
2	ACO	A	800	-	-	7/47/67/67	0/3/3/3
2	ACO	C	800	-	-	7/47/67/67	0/3/3/3

All (37) bond length outliers are listed below:

Mol	Chain	Res	Type	Atoms	Z	Observed(Å)	Ideal(Å)
2	C	800	ACO	O4B-C1B	17.40	1.65	1.41
2	D	800	ACO	O4B-C1B	17.11	1.64	1.41
2	B	800	ACO	O4B-C1B	16.72	1.64	1.41
2	A	800	ACO	O4B-C1B	16.30	1.63	1.41
2	C	800	ACO	C2B-C1B	-13.85	1.32	1.53
2	D	800	ACO	C2B-C1B	-13.67	1.33	1.53
2	B	800	ACO	C2B-C1B	-13.48	1.33	1.53
2	A	800	ACO	C2B-C1B	-13.13	1.33	1.53
2	C	800	ACO	O4B-C4B	-6.73	1.30	1.45
2	D	800	ACO	O4B-C4B	-6.46	1.30	1.45

*Continued on next page...*

Continued from previous page...

Mol	Chain	Res	Type	Atoms	Z	Observed(Å)	Ideal(Å)
2	B	800	ACO	O4B-C4B	-6.39	1.30	1.45
2	A	800	ACO	O4B-C4B	-6.29	1.30	1.45
2	A	800	ACO	C5P-N4P	4.75	1.44	1.33
2	B	800	ACO	C5P-N4P	4.60	1.43	1.33
2	D	800	ACO	C5P-N4P	4.59	1.43	1.33
2	C	800	ACO	C9P-N8P	4.43	1.43	1.33
2	D	800	ACO	C9P-N8P	4.37	1.43	1.33
2	A	800	ACO	C9P-N8P	4.35	1.43	1.33
2	C	800	ACO	C5P-N4P	4.30	1.43	1.33
2	B	800	ACO	C9P-N8P	4.13	1.42	1.33
2	C	800	ACO	C2A-N3A	3.17	1.37	1.32
2	C	800	ACO	C6A-N6A	2.95	1.44	1.34
2	D	800	ACO	C6A-N6A	2.92	1.44	1.34
2	B	800	ACO	C2A-N3A	2.91	1.36	1.32
2	D	800	ACO	C2A-N3A	2.91	1.36	1.32
2	C	800	ACO	O3B-C3B	-2.85	1.33	1.44
2	B	800	ACO	C6A-N6A	2.82	1.44	1.34
2	A	800	ACO	C6A-N6A	2.80	1.44	1.34
2	A	800	ACO	C2A-N3A	2.76	1.36	1.32
2	D	800	ACO	O2B-C2B	2.69	1.49	1.43
2	B	800	ACO	O3B-C3B	-2.66	1.34	1.44
2	B	800	ACO	O2B-C2B	2.62	1.49	1.43
2	D	800	ACO	O3B-C3B	-2.61	1.34	1.44
2	C	800	ACO	O2B-C2B	2.57	1.49	1.43
2	A	800	ACO	O3B-C3B	-2.42	1.35	1.44
2	A	800	ACO	O2B-C2B	2.35	1.48	1.43
2	A	800	ACO	C5A-C4A	-2.08	1.35	1.40

All (21) bond angle outliers are listed below:

Mol	Chain	Res	Type	Atoms	Z	Observed(°)	Ideal(°)
2	D	800	ACO	C5A-C6A-N6A	8.63	133.47	120.35
2	C	800	ACO	C5A-C6A-N6A	8.33	133.01	120.35
2	A	800	ACO	C5A-C6A-N6A	8.31	132.98	120.35
2	B	800	ACO	C5A-C6A-N6A	8.19	132.80	120.35
2	A	800	ACO	N3A-C2A-N1A	-5.72	119.74	128.68
2	D	800	ACO	N6A-C6A-N1A	-5.66	106.82	118.57
2	B	800	ACO	N3A-C2A-N1A	-5.56	119.99	128.68
2	A	800	ACO	N6A-C6A-N1A	-5.54	107.07	118.57
2	C	800	ACO	N6A-C6A-N1A	-5.48	107.19	118.57
2	B	800	ACO	N6A-C6A-N1A	-5.44	107.28	118.57
2	C	800	ACO	N3A-C2A-N1A	-5.31	120.39	128.68

Continued on next page...

*Continued from previous page...*

Mol	Chain	Res	Type	Atoms	Z	Observed(°)	Ideal(°)
2	D	800	ACO	N3A-C2A-N1A	-5.14	120.64	128.68
2	C	800	ACO	C2P-C3P-N4P	-2.79	106.56	112.42
2	A	800	ACO	C2B-C3B-C4B	-2.74	98.37	103.22
2	D	800	ACO	C2P-C3P-N4P	-2.55	107.07	112.42
2	A	800	ACO	O6A-CCP-CBP	-2.51	106.51	110.55
2	A	800	ACO	C3B-C2B-C1B	2.45	105.33	99.89
2	A	800	ACO	C2P-C3P-N4P	-2.44	107.30	112.42
2	D	800	ACO	C2B-C3B-C4B	-2.23	99.27	103.22
2	B	800	ACO	C3B-C2B-C1B	2.05	104.43	99.89
2	A	800	ACO	C3P-N4P-C5P	-2.01	119.10	122.84

There are no chirality outliers.

All (28) torsion outliers are listed below:

Mol	Chain	Res	Type	Atoms
2	A	800	ACO	C3B-O3B-P3B-O9A
2	A	800	ACO	O-C-S1P-C2P
2	A	800	ACO	CH3-C-S1P-C2P
2	B	800	ACO	C3B-O3B-P3B-O9A
2	B	800	ACO	C5B-O5B-P1A-O2A
2	B	800	ACO	O-C-S1P-C2P
2	B	800	ACO	CH3-C-S1P-C2P
2	C	800	ACO	C5B-O5B-P1A-O2A
2	C	800	ACO	O-C-S1P-C2P
2	C	800	ACO	CH3-C-S1P-C2P
2	D	800	ACO	C3B-O3B-P3B-O9A
2	D	800	ACO	C5B-O5B-P1A-O2A
2	D	800	ACO	O-C-S1P-C2P
2	D	800	ACO	CH3-C-S1P-C2P
2	C	800	ACO	C6P-C7P-N8P-C9P
2	B	800	ACO	C5B-O5B-P1A-O3A
2	C	800	ACO	C3B-O3B-P3B-O9A
2	C	800	ACO	C5B-O5B-P1A-O3A
2	D	800	ACO	C5B-O5B-P1A-O3A
2	A	800	ACO	C6P-C7P-N8P-C9P
2	B	800	ACO	C5B-O5B-P1A-O1A
2	C	800	ACO	C5B-O5B-P1A-O1A
2	D	800	ACO	C5B-O5B-P1A-O1A
2	D	800	ACO	C6P-C7P-N8P-C9P
2	A	800	ACO	C3B-O3B-P3B-O8A
2	A	800	ACO	C5B-O5B-P1A-O3A
2	B	800	ACO	C6P-C7P-N8P-C9P

*Continued on next page...*

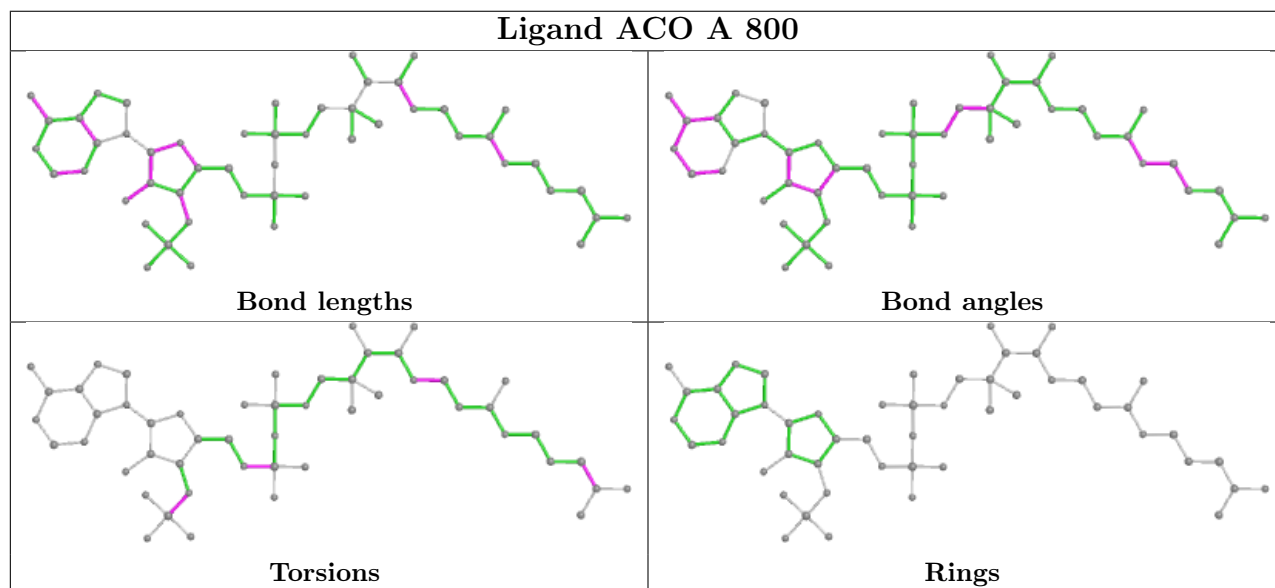
*Continued from previous page...*

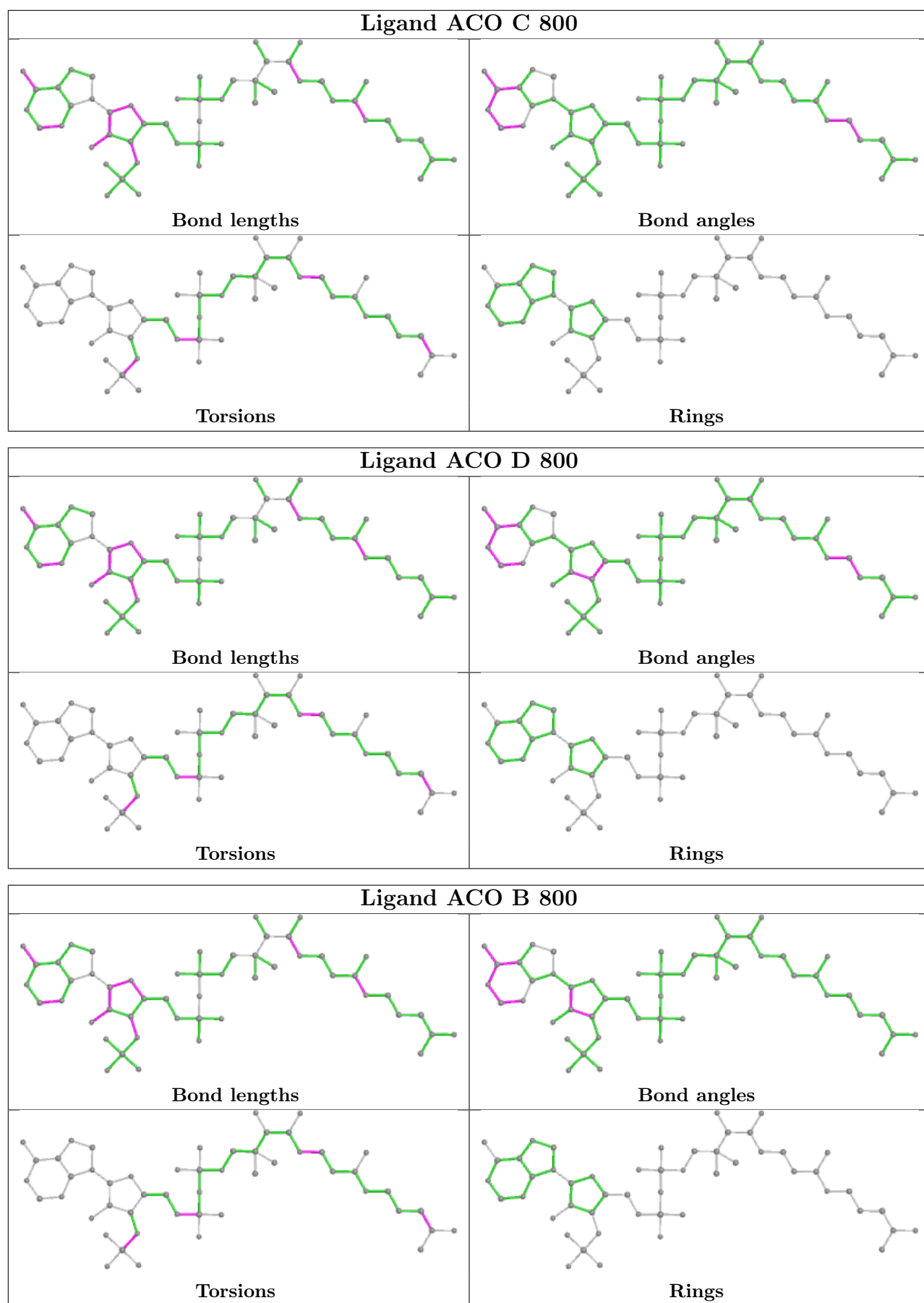
Mol	Chain	Res	Type	Atoms
2	A	800	ACO	C5B-O5B-P1A-O1A

There are no ring outliers.

No monomer is involved in short contacts.

The following is a two-dimensional graphical depiction of Mogul quality analysis of bond lengths, bond angles, torsion angles, and ring geometry for all instances of the Ligand of Interest. In addition, ligands with molecular weight > 250 and outliers as shown on the validation Tables will also be included. For torsion angles, if less than 5% of the Mogul distribution of torsion angles is within 10 degrees of the torsion angle in question, then that torsion angle is considered an outlier. Any bond that is central to one or more torsion angles identified as an outlier by Mogul will be highlighted in the graph. For rings, the root-mean-square deviation (RMSD) between the ring in question and similar rings identified by Mogul is calculated over all ring torsion angles. If the average RMSD is greater than 60 degrees and the minimal RMSD between the ring in question and any Mogul-identified rings is also greater than 60 degrees, then that ring is considered an outlier. The outliers are highlighted in purple. The color gray indicates Mogul did not find sufficient equivalents in the CSD to analyse the geometry.





#### 4.7 Other polymers [i](#)

There are no such residues in this entry.

#### 4.8 Polymer linkage issues [i](#)

There are no chain breaks in this entry.

## 5 Fit of model and data

### 5.1 Protein, DNA and RNA chains

EDS failed to run properly - this section is therefore empty.

### 5.2 Non-standard residues in protein, DNA, RNA chains

EDS failed to run properly - this section is therefore empty.

### 5.3 Carbohydrates

EDS failed to run properly - this section is therefore empty.

### 5.4 Ligands

EDS failed to run properly - this section is therefore empty.

### 5.5 Other polymers

EDS failed to run properly - this section is therefore empty.