



Full wwPDB X-ray Structure Validation Report ⓘ

Aug 16, 2023 – 12:34 AM EDT

PDB ID : 1SY7
Title : Crystal structure of the catalase-1 from *Neurospora crassa*, native structure at 1.75Å resolution.
Authors : Diaz, A.; Horjales, E.; Rudino-Pinera, E.; Arreola, R.; Hansberg, W.
Deposited on : 2004-04-01
Resolution : 1.75 Å(reported)

This is a Full wwPDB X-ray Structure Validation Report for a publicly released PDB entry.

We welcome your comments at validation@mail.wwpdb.org

A user guide is available at

<https://www.wwpdb.org/validation/2017/XrayValidationReportHelp>

with specific help available everywhere you see the ⓘ symbol.

The types of validation reports are described at

<http://www.wwpdb.org/validation/2017/FAQs#types>.

The following versions of software and data (see [references ⓘ](#)) were used in the production of this report:

MolProbity : 4.02b-467
Mogul : 1.8.5 (274361), CSD as541be (2020)
Xtriage (Phenix) : 1.13
EDS : 2.35
buster-report : 1.1.7 (2018)
Percentile statistics : 20191225.v01 (using entries in the PDB archive December 25th 2019)
Refmac : 5.8.0158
CCP4 : 7.0.044 (Gargrove)
Ideal geometry (proteins) : Engh & Huber (2001)
Ideal geometry (DNA, RNA) : Parkinson et al. (1996)
Validation Pipeline (wwPDB-VP) : 2.35

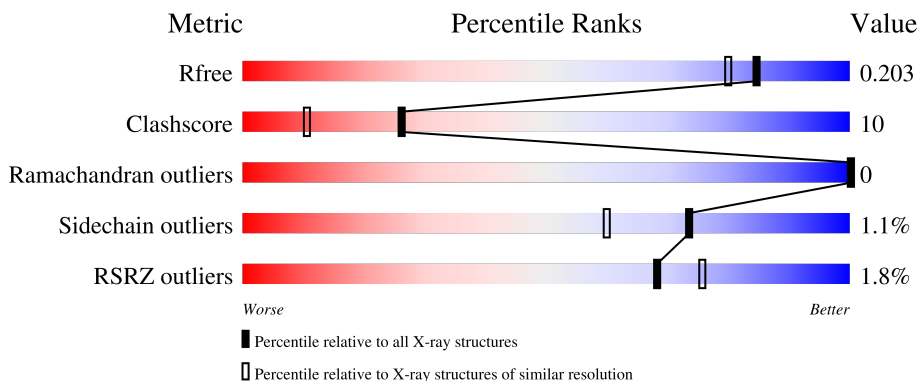
1 Overall quality at a glance

The following experimental techniques were used to determine the structure:

X-RAY DIFFRACTION


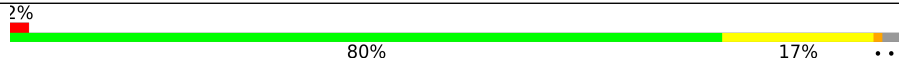
The reported resolution of this entry is 1.75 Å.

Percentile scores (ranging between 0-100) for global validation metrics of the entry are shown in the following graphic. The table shows the number of entries on which the scores are based.



Metric	Whole archive (#Entries)	Similar resolution (#Entries, resolution range(Å))
R_{free}	130704	2340 (1.76-1.76)
Clashscore	141614	2466 (1.76-1.76)
Ramachandran outliers	138981	2437 (1.76-1.76)
Sidechain outliers	138945	2437 (1.76-1.76)
RSRZ outliers	127900	2298 (1.76-1.76)

The table below summarises the geometric issues observed across the polymeric chains and their fit to the electron density. The red, orange, yellow and green segments of the lower bar indicate the fraction of residues that contain outliers for ≥ 3 , 2, 1 and 0 types of geometric quality criteria respectively. A grey segment represents the fraction of residues that are not modelled. The numeric value for each fraction is indicated below the corresponding segment, with a dot representing fractions $\leq 5\%$. The upper red bar (where present) indicates the fraction of residues that have poor fit to the electron density. The numeric value is given above the bar.

Mol	Chain	Length	Quality of chain
1	A	715	 79% 18% ..
1	B	715	 80% 17% ..



Mol	Chain	Residues	Atoms				ZeroOcc	AltConf	
			Total	C	Fe	N			O
3	A	1	43	34	1	4	4	0	1
3	B	1	43	34	1	4	4	0	1

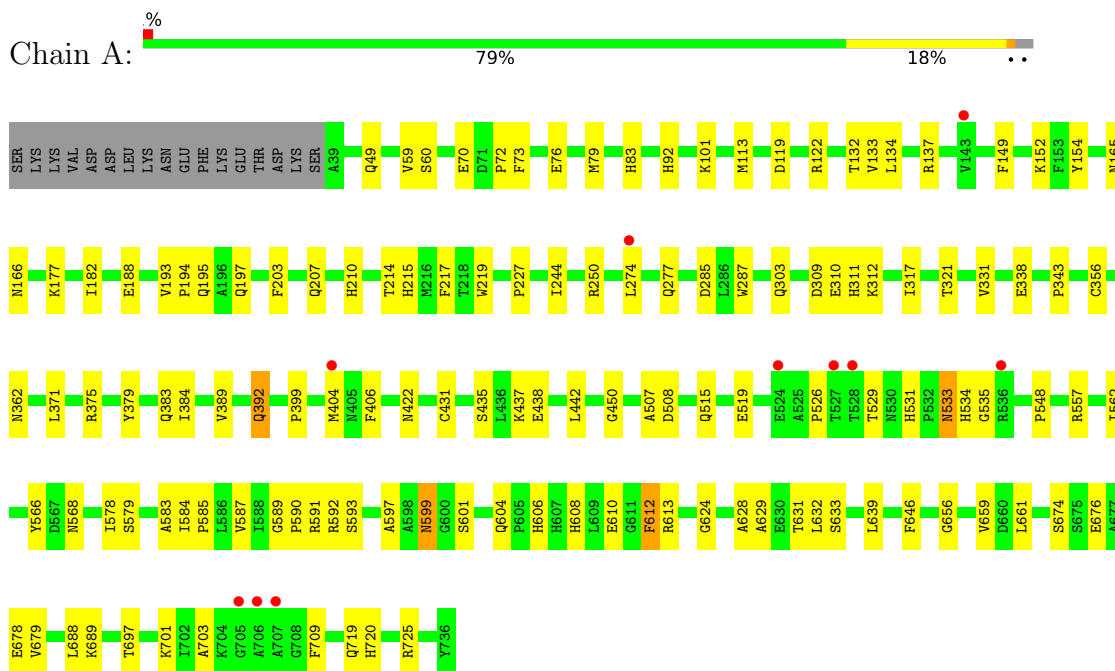
- Molecule 4 is water.

Mol	Chain	Residues	Atoms		ZeroOcc	AltConf
			Total	O		
4	A	878	878	878	0	0
4	B	847	847	847	0	0

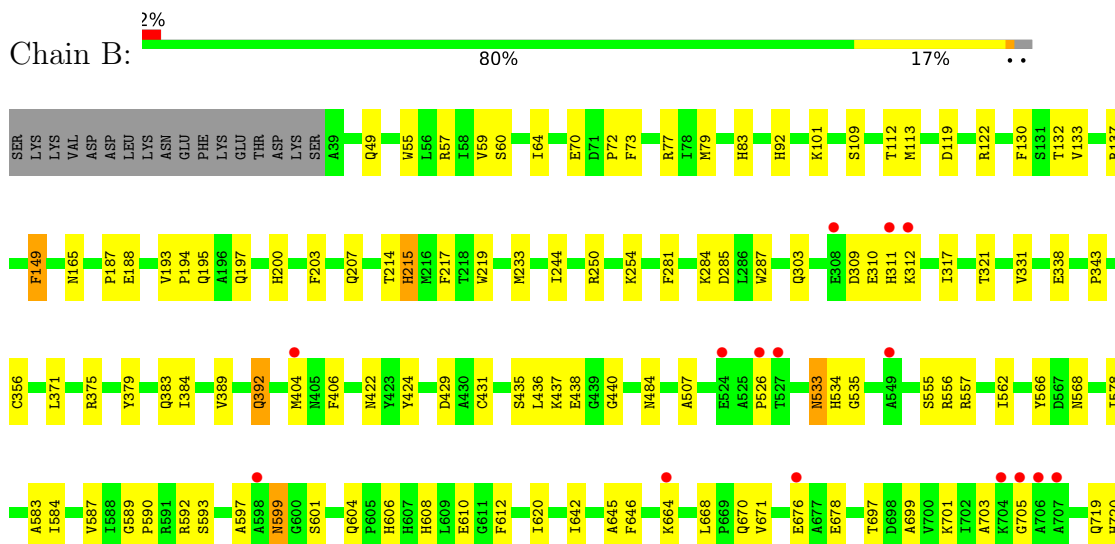
3 Residue-property plots [i](#)

These plots are drawn for all protein, RNA, DNA and oligosaccharide chains in the entry. The first graphic for a chain summarises the proportions of the various outlier classes displayed in the second graphic. The second graphic shows the sequence view annotated by issues in geometry and electron density. Residues are color-coded according to the number of geometric quality criteria for which they contain at least one outlier: green = 0, yellow = 1, orange = 2 and red = 3 or more. A red dot above a residue indicates a poor fit to the electron density ($RSRZ > 2$). Stretches of 2 or more consecutive residues without any outlier are shown as a green connector. Residues present in the sample, but not in the model, are shown in grey.

• Molecule 1: Catalase 1



• Molecule 1: Catalase 1





4 Data and refinement statistics

Property	Value	Source
Space group	C 1 2 1	Depositor
Cell constants a, b, c, α , β , γ	130.01Å 182.24Å 90.36Å 90.00° 133.41° 90.00°	Depositor
Resolution (Å)	15.00 – 1.75 51.09 – 1.75	Depositor EDS
% Data completeness (in resolution range)	89.0 (15.00-1.75) 89.1 (51.09-1.75)	Depositor EDS
R_{merge}	(Not available)	Depositor
R_{sym}	0.06	Depositor
$\langle I/\sigma(I) \rangle$ ¹	3.01 (at 1.75Å)	Xtriage
Refinement program	CNS 1.0	Depositor
R, R_{free}	0.183 , 0.206 0.181 , 0.203	Depositor DCC
R_{free} test set	13616 reflections (9.98%)	wwPDB-VP
Wilson B-factor (Å ²)	16.1	Xtriage
Anisotropy	0.187	Xtriage
Bulk solvent k_{sol} (e/Å ³), B_{sol} (Å ²)	0.38 , 63.3	EDS
L-test for twinning ²	$\langle L \rangle = 0.50$, $\langle L^2 \rangle = 0.33$	Xtriage
Estimated twinning fraction	0.000 for h+2*k,-h-l 0.037 for -h-2*k,l 0.059 for h,-k,-h-l	Xtriage
F_o, F_c correlation	0.96	EDS
Total number of atoms	12949	wwPDB-VP
Average B, all atoms (Å ²)	21.0	wwPDB-VP

Xtriage's analysis on translational NCS is as follows: *The largest off-origin peak in the Patterson function is 4.66% of the height of the origin peak. No significant pseudotranslation is detected.*

¹Intensities estimated from amplitudes.

²Theoretical values of $\langle |L| \rangle$, $\langle L^2 \rangle$ for acentric reflections are 0.5, 0.333 respectively for untwinned datasets, and 0.375, 0.2 for perfectly twinned datasets.

5 Model quality

5.1 Standard geometry

Bond lengths and bond angles in the following residue types are not validated in this section: HEM, HDD

The Z score for a bond length (or angle) is the number of standard deviations the observed value is removed from the expected value. A bond length (or angle) with $|Z| > 5$ is considered an outlier worth inspection. RMSZ is the root-mean-square of all Z scores of the bond lengths (or angles).

Mol	Chain	Bond lengths		Bond angles	
		RMSZ	# Z >5	RMSZ	# Z >5
1	A	0.32	0/5674	0.60	0/7700
1	B	0.33	0/5674	0.61	0/7700
All	All	0.33	0/11348	0.61	0/15400

There are no bond length outliers.

There are no bond angle outliers.

There are no chirality outliers.

There are no planarity outliers.

5.2 Too-close contacts

In the following table, the Non-H and H(model) columns list the number of non-hydrogen atoms and hydrogen atoms in the chain respectively. The H(added) column lists the number of hydrogen atoms added and optimized by MolProbity. The Clashes column lists the number of clashes within the asymmetric unit, whereas Symm-Clashes lists symmetry-related clashes.

Mol	Chain	Non-H	H(model)	H(added)	Clashes	Symm-Clashes
1	A	5525	0	5351	121	0
1	B	5525	0	5351	112	0
2	A	44	0	31	2	0
2	B	44	0	31	2	0
3	A	43	0	30	1	0
3	B	43	0	30	1	0
4	A	878	0	0	59	0
4	B	847	0	0	47	1
All	All	12949	0	10824	229	1

The all-atom clashscore is defined as the number of clashes found per 1000 atoms (including hydrogen atoms). The all-atom clashscore for this structure is 10.

All (229) close contacts within the same asymmetric unit are listed below, sorted by their clash magnitude.

Atom-1	Atom-2	Interatomic distance (Å)	Clash overlap (Å)
1:B:583:ALA:HA	4:B:2640:HOH:O	1.59	1.03
1:A:406:PHE:HB2	4:B:2651:HOH:O	1.59	1.02
1:A:585:PRO:HD3	4:A:2711:HOH:O	1.58	1.01
1:A:399:PRO:HA	4:A:2655:HOH:O	1.60	0.98
1:A:632:LEU:HB2	4:A:2718:HOH:O	1.63	0.96
1:A:508:ASP:HA	4:A:2506:HOH:O	1.66	0.95
1:A:154:TYR:HD1	4:A:2655:HOH:O	1.53	0.91
1:A:628:ALA:HA	4:A:2744:HOH:O	1.71	0.91
1:B:587:VAL:H	1:B:606:HIS:HD2	1.19	0.89
1:A:624:GLY:HA3	4:A:2401:HOH:O	1.73	0.87
1:A:587:VAL:H	1:A:606:HIS:HD2	1.21	0.85
1:A:656:GLY:HA3	4:A:2401:HOH:O	1.78	0.82
1:A:688:LEU:HB2	4:A:2560:HOH:O	1.80	0.81
1:A:450:GLY:HA3	4:A:2663:HOH:O	1.79	0.81
1:B:670:GLN:HB2	4:B:2719:HOH:O	1.81	0.80
1:A:661:LEU:HD22	4:A:2718:HOH:O	1.79	0.80
1:A:227:PRO:HG3	4:A:2695:HOH:O	1.81	0.80
1:B:424:TYR:HE1	4:B:2644:HOH:O	1.64	0.79
1:A:629:ALA:HA	4:A:2718:HOH:O	1.81	0.79
1:A:612:PHE:O	4:A:2478:HOH:O	2.00	0.79
1:A:659:VAL:HG11	4:A:2539:HOH:O	1.80	0.78
1:A:639:LEU:HD21	4:A:2681:HOH:O	1.83	0.78
1:A:578:ILE:HG22	4:A:2711:HOH:O	1.84	0.77
1:B:484:ASN:HB3	4:B:2622:HOH:O	1.83	0.76
1:A:182:ILE:HA	4:A:2505:HOH:O	1.85	0.76
1:A:701:LYS:HE2	1:A:703:ALA:HB3	1.67	0.75
1:B:404:MET:HG3	1:B:431:CYS:SG	2.26	0.74
1:A:76:GLU:HG3	4:A:2730:HOH:O	1.85	0.74
1:A:689:LYS:HB2	4:A:2539:HOH:O	1.86	0.74
1:B:701:LYS:HE2	1:B:703:ALA:HB3	1.68	0.73
1:A:404:MET:HG3	1:A:431:CYS:SG	2.28	0.73
1:B:57:ARG:HB3	4:B:2695:HOH:O	1.87	0.73
1:B:55:TRP:HB3	4:B:2695:HOH:O	1.88	0.72
1:A:309:ASP:HA	1:A:312:LYS:HD3	1.72	0.71
1:A:610:GLU:C	4:A:2478:HOH:O	2.28	0.70
1:B:194:PRO:HD2	4:B:2710:HOH:O	1.90	0.70
1:B:130:PHE:HD2	4:B:2725:HOH:O	1.74	0.70
1:B:309:ASP:HA	1:B:312:LYS:HD3	1.74	0.69
1:B:556:ARG:N	4:B:2640:HOH:O	2.27	0.67
1:A:310:GLU:HG3	1:A:317:ILE:HD11	1.77	0.67

Continued on next page...

Continued from previous page...

Atom-1	Atom-2	Interatomic distance (Å)	Clash overlap (Å)
1:A:194:PRO:HG2	4:A:2608:HOH:O	1.94	0.67
1:B:436:LEU:HA	4:B:2617:HOH:O	1.94	0.67
1:A:533:ASN:ND2	1:A:535:GLY:H	1.94	0.66
1:A:166:ASN:ND2	4:A:2695:HOH:O	2.28	0.65
1:B:440:GLY:N	4:B:2617:HOH:O	2.29	0.65
1:B:533:ASN:ND2	1:B:535:GLY:H	1.93	0.65
1:B:310:GLU:HG3	1:B:317:ILE:HD11	1.79	0.65
1:B:533:ASN:C	1:B:533:ASN:HD22	2.00	0.64
1:A:533:ASN:HD22	1:A:533:ASN:C	2.00	0.64
1:A:631:THR:HB	4:A:2744:HOH:O	1.98	0.63
1:B:281:PHE:HA	4:B:2638:HOH:O	1.98	0.63
1:A:613:ARG:NH1	4:A:2478:HOH:O	2.31	0.63
1:A:137:ARG:HD3	4:A:2007:HOH:O	1.99	0.62
1:A:591:ARG:HG2	4:A:2556:HOH:O	2.00	0.62
1:A:79:MET:HE3	4:B:2701:HOH:O	2.00	0.62
1:B:610:GLU:HB3	4:B:2607:HOH:O	2.00	0.62
1:B:584:ILE:N	1:B:584:ILE:HD12	2.15	0.61
1:B:671:VAL:HG23	4:B:2719:HOH:O	1.98	0.61
1:A:584:ILE:HD12	1:A:584:ILE:N	2.16	0.61
1:B:555:SER:N	4:B:2640:HOH:O	2.33	0.61
1:A:165:ASN:CG	2:A:1880[B]:HDD:HMB2	2.21	0.61
1:B:215:HIS:CE1	1:B:219:TRP:HE1	2.19	0.60
1:B:642:ILE:HA	4:B:2613:HOH:O	2.01	0.59
1:A:599:ASN:ND2	1:A:601:SER:H	2.00	0.59
1:B:165:ASN:CG	2:B:1881[B]:HDD:HMB2	2.22	0.59
1:B:64:ILE:HG12	4:B:2690:HOH:O	2.02	0.59
1:A:579:SER:HA	4:A:2711:HOH:O	2.02	0.59
1:A:701:LYS:HE2	1:A:703:ALA:CB	2.32	0.59
1:B:699:ALA:N	4:B:2648:HOH:O	2.36	0.58
1:B:701:LYS:HE2	1:B:703:ALA:CB	2.33	0.58
1:B:645:ALA:HB3	4:B:2613:HOH:O	2.04	0.58
1:A:612:PHE:N	4:A:2478:HOH:O	2.37	0.57
1:B:599:ASN:ND2	1:B:601:SER:H	2.03	0.57
1:B:676:GLU:HB2	1:B:678:GLU:OE1	2.04	0.57
1:A:215:HIS:CE1	1:A:219:TRP:HE1	2.22	0.57
1:A:593:SER:O	1:A:604:GLN:HG3	2.04	0.57
1:B:284:LYS:HB2	4:B:2638:HOH:O	2.04	0.57
1:A:437:LYS:HA	1:A:437:LYS:HE2	1.87	0.57
1:B:429:ASP:C	4:B:2644:HOH:O	2.42	0.56
1:A:709:PHE:HD2	4:A:2560:HOH:O	1.88	0.56
1:B:533:ASN:HD22	1:B:535:GLY:H	1.52	0.56

Continued on next page...

Continued from previous page...

Atom-1	Atom-2	Interatomic distance (Å)	Clash overlap (Å)
1:A:197:GLN:N	4:A:2608:HOH:O	2.39	0.55
1:B:620:ILE:HD11	4:B:2613:HOH:O	2.04	0.55
1:A:676:GLU:HB2	1:A:678:GLU:OE1	2.05	0.55
1:B:187:PRO:HA	4:B:2710:HOH:O	2.06	0.55
1:B:437:LYS:HA	1:B:437:LYS:HE2	1.88	0.55
1:A:311:HIS:HD2	4:A:2680:HOH:O	1.89	0.55
1:B:233:MET:CE	4:B:2725:HOH:O	2.55	0.55
1:B:119:ASP:HB3	1:B:122:ARG:HG2	1.88	0.55
1:A:83:HIS:NE2	1:B:384:ILE:HD13	2.22	0.54
1:A:177:LYS:HB3	4:A:2600:HOH:O	2.05	0.54
1:A:119:ASP:HB3	1:A:122:ARG:HG2	1.88	0.54
1:A:437:LYS:HE2	1:A:437:LYS:CA	2.38	0.54
1:B:437:LYS:HE2	1:B:437:LYS:CA	2.38	0.54
1:A:437:LYS:HG2	4:A:2504:HOH:O	2.07	0.54
1:A:679:VAL:HG13	4:A:2560:HOH:O	2.08	0.54
1:B:195:GLN:O	1:B:197:GLN:HG3	2.06	0.54
4:A:1970:HOH:O	1:B:79:MET:HE3	2.07	0.54
1:A:379:TYR:O	1:A:383:GLN:HG2	2.07	0.53
1:A:533:ASN:HD22	1:A:535:GLY:H	1.55	0.53
1:A:579:SER:N	4:A:2711:HOH:O	2.42	0.53
1:B:287:TRP:CZ3	1:B:343:PRO:HD2	2.43	0.53
1:B:668:LEU:HD23	4:B:2719:HOH:O	2.08	0.53
1:B:566:TYR:CZ	1:B:597:ALA:HB2	2.44	0.53
1:B:101:LYS:HE2	1:B:338:GLU:OE1	2.09	0.52
1:A:195:GLN:O	1:A:197:GLN:HG3	2.09	0.52
1:A:165:ASN:ND2	2:A:1880[B]:HDD:HMB2	2.25	0.52
1:A:197:GLN:HB2	4:A:2608:HOH:O	2.09	0.52
1:A:287:TRP:CZ3	1:A:343:PRO:HD2	2.45	0.52
1:A:590:PRO:HD2	4:A:2556:HOH:O	2.10	0.52
1:A:101:LYS:HE2	1:A:338:GLU:OE1	2.10	0.51
1:B:92:HIS:HA	1:B:132:THR:O	2.10	0.51
1:A:579:SER:CA	4:A:2711:HOH:O	2.57	0.51
1:A:92:HIS:CE1	1:A:133:VAL:HG22	2.45	0.51
1:B:593:SER:O	1:B:604:GLN:HG3	2.09	0.51
1:B:92:HIS:CE1	1:B:133:VAL:HG22	2.46	0.51
1:B:379:TYR:O	1:B:383:GLN:HG2	2.11	0.51
1:A:566:TYR:CZ	1:A:597:ALA:HB2	2.46	0.50
1:A:674:SER:HB3	4:A:2539:HOH:O	2.11	0.50
1:A:679:VAL:HG22	4:A:2560:HOH:O	2.11	0.50
1:B:165:ASN:ND2	2:B:1881[B]:HDD:HMB2	2.26	0.50
1:A:188:GLU:HG3	1:A:193:VAL:O	2.11	0.50

Continued on next page...

Continued from previous page...

Atom-1	Atom-2	Interatomic distance (Å)	Clash overlap (Å)
1:A:384:ILE:HD13	1:B:83:HIS:NE2	2.27	0.50
1:B:188:GLU:N	4:B:2710:HOH:O	2.44	0.50
1:B:311:HIS:HD2	4:B:2155:HOH:O	1.93	0.49
1:A:531:HIS:O	4:A:2506:HOH:O	2.20	0.49
1:A:92:HIS:HA	1:A:132:THR:O	2.12	0.49
1:B:424:TYR:CE1	4:B:2644:HOH:O	2.49	0.49
1:B:697:THR:O	1:B:697:THR:HG22	2.13	0.49
1:A:79:MET:HB2	4:A:2220:HOH:O	2.12	0.49
1:A:274:LEU:N	4:A:2585:HOH:O	2.46	0.49
1:A:719:GLN:O	1:A:720:HIS:HB3	2.13	0.49
1:B:188:GLU:HG3	1:B:193:VAL:O	2.13	0.49
1:A:362:ASN:HA	4:A:2689:HOH:O	2.13	0.49
1:B:244:ILE:HD13	1:B:250:ARG:HG3	1.95	0.49
1:A:215:HIS:HD2	1:A:321:THR:O	1.94	0.48
1:B:79:MET:HB2	4:B:2444:HOH:O	2.13	0.48
1:B:719:GLN:O	1:B:720:HIS:HB3	2.13	0.48
1:A:356:CYS:HA	1:A:379:TYR:CG	2.48	0.48
1:B:592:ARG:O	1:B:592:ARG:HD2	2.13	0.48
1:A:533:ASN:HD22	1:A:534:HIS:N	2.12	0.48
1:A:548:PRO:HB3	4:A:2661:HOH:O	2.12	0.48
1:B:119:ASP:CG	1:B:122:ARG:HG2	2.34	0.48
1:A:134:LEU:HD21	4:A:2505:HOH:O	2.13	0.48
1:B:406:PHE:CD2	1:B:422:ASN:HA	2.49	0.48
1:B:356:CYS:HA	1:B:379:TYR:CG	2.49	0.48
1:A:697:THR:HG23	4:A:2549:HOH:O	2.14	0.47
1:A:437:LYS:HE2	1:A:437:LYS:N	2.29	0.47
1:A:679:VAL:HA	4:A:2560:HOH:O	2.14	0.47
1:A:697:THR:HG22	1:A:697:THR:O	2.13	0.47
1:A:214:THR:HA	1:A:217:PHE:CE1	2.49	0.47
1:A:406:PHE:CD2	1:A:422:ASN:HA	2.49	0.47
1:A:656:GLY:HA2	1:A:689:LYS:O	2.15	0.47
1:B:214:THR:HA	1:B:217:PHE:CE1	2.49	0.47
1:B:215:HIS:HD2	1:B:321:THR:O	1.97	0.47
1:A:244:ILE:HD13	1:A:250:ARG:HG3	1.96	0.47
1:B:203:PHE:O	1:B:207:GLN:HG2	2.15	0.47
1:B:437:LYS:HE2	1:B:437:LYS:N	2.29	0.47
1:B:533:ASN:HD22	1:B:534:HIS:N	2.13	0.46
1:B:578:ILE:HG23	1:B:583:ALA:HB3	1.96	0.46
1:B:587:VAL:H	1:B:606:HIS:CD2	2.12	0.46
1:B:664:LYS:HD2	4:B:2459:HOH:O	2.14	0.46
1:B:722:ASN:ND2	4:B:2610:HOH:O	2.49	0.46

Continued on next page...

Continued from previous page...

Atom-1	Atom-2	Interatomic distance (Å)	Clash overlap (Å)
1:A:392:GLN:HA	1:A:392:GLN:HE21	1.81	0.46
1:A:592:ARG:O	1:A:592:ARG:HD2	2.16	0.46
1:A:119:ASP:CG	1:A:122:ARG:HG2	2.37	0.45
1:A:375:ARG:HB3	1:A:379:TYR:HE1	1.81	0.45
1:B:568:ASN:ND2	4:B:2424:HOH:O	2.49	0.45
1:B:705:GLY:HA2	4:B:2662:HOH:O	2.16	0.45
1:B:371:LEU:O	1:B:375:ARG:HG3	2.16	0.45
1:B:149:PHE:CB	4:B:2725:HOH:O	2.64	0.45
1:B:435:SER:OG	1:B:438:GLU:HG3	2.17	0.45
1:B:77:ARG:NH2	4:B:2651:HOH:O	2.21	0.45
1:B:375:ARG:HB3	1:B:379:TYR:HE1	1.81	0.44
1:A:371:LEU:O	1:A:375:ARG:HG3	2.18	0.44
1:A:568:ASN:ND2	4:A:2198:HOH:O	2.49	0.44
1:A:562:ILE:O	1:A:590:PRO:HD3	2.18	0.44
1:B:668:LEU:HB3	4:B:2719:HOH:O	2.18	0.44
1:A:203:PHE:O	1:A:207:GLN:HG2	2.18	0.44
1:A:435:SER:OG	1:A:438:GLU:HG3	2.17	0.44
1:A:507:ALA:CB	1:A:526:PRO:HG2	2.47	0.44
1:B:59:VAL:HG22	1:B:60:SER:N	2.33	0.44
1:B:149:PHE:HB2	4:B:2725:HOH:O	2.18	0.44
1:A:83:HIS:HB2	1:B:389:VAL:HG21	2.00	0.43
1:A:277:GLN:NE2	4:A:2585:HOH:O	2.51	0.43
1:A:442:LEU:N	4:A:2689:HOH:O	2.46	0.43
1:B:699:ALA:HB2	4:B:2648:HOH:O	2.18	0.43
1:B:119:ASP:CB	1:B:122:ARG:HG2	2.47	0.43
1:B:533:ASN:ND2	1:B:533:ASN:C	2.71	0.43
1:B:303:GLN:HG3	1:B:331:VAL:HG22	2.00	0.43
1:A:165:ASN:CG	3:A:1883[A]:HEM:HMB2	2.38	0.43
1:B:165:ASN:CG	3:B:1882[A]:HEM:HMB2	2.39	0.43
1:B:49:GLN:HG3	1:B:73:PHE:CD1	2.53	0.43
1:B:392:GLN:HE21	1:B:392:GLN:HA	1.83	0.43
1:B:589:GLY:O	1:B:608:HIS:HA	2.18	0.43
1:A:303:GLN:HG3	1:A:331:VAL:HG22	2.01	0.43
1:B:646:PHE:HA	1:B:725:ARG:NH1	2.34	0.43
1:A:589:GLY:O	1:A:608:HIS:HA	2.19	0.43
1:B:404:MET:HE3	4:B:2072:HOH:O	2.19	0.43
1:B:507:ALA:CB	1:B:526:PRO:HG2	2.49	0.42
1:B:697:THR:HB	4:B:2647:HOH:O	2.18	0.42
1:B:440:GLY:O	4:B:2617:HOH:O	2.21	0.42
1:A:578:ILE:HG23	1:A:583:ALA:HB3	2.00	0.42
1:B:137:ARG:NE	4:B:2674:HOH:O	2.51	0.42

Continued on next page...

Continued from previous page...

Atom-1	Atom-2	Interatomic distance (Å)	Clash overlap (Å)
1:B:375:ARG:NH2	1:B:379:TYR:OH	2.42	0.42
1:A:285:ASP:HA	1:A:557:ARG:HH22	1.84	0.42
1:B:200:HIS:CE1	4:B:2710:HOH:O	2.71	0.42
1:B:731:HIS:HB2	4:B:2663:HOH:O	2.19	0.42
1:A:70:GLU:O	1:A:72:PRO:HD3	2.19	0.42
1:A:119:ASP:CB	1:A:122:ARG:HG2	2.49	0.42
1:A:49:GLN:HG3	1:A:73:PHE:CD1	2.54	0.42
1:A:719:GLN:HG3	4:A:2693:HOH:O	2.19	0.42
1:A:152:LYS:HG3	4:A:2682:HOH:O	2.19	0.42
1:A:389:VAL:HG21	1:B:83:HIS:HB2	2.01	0.42
1:B:584:ILE:N	1:B:584:ILE:CD1	2.82	0.42
1:A:437:LYS:HE3	4:A:2749:HOH:O	2.20	0.41
1:B:562:ILE:O	1:B:590:PRO:HD3	2.20	0.41
1:A:515:GLN:O	1:A:519:GLU:HG2	2.19	0.41
1:B:109:SER:HA	1:B:112:THR:O	2.21	0.41
1:B:70:GLU:O	1:B:72:PRO:HD3	2.21	0.41
1:A:59:VAL:HG22	1:A:60:SER:N	2.36	0.41
1:A:210:HIS:HB2	4:A:2554:HOH:O	2.21	0.41
1:B:254:LYS:HB2	1:B:303:GLN:HB2	2.02	0.41
1:B:436:LEU:O	4:B:2617:HOH:O	2.21	0.40
1:B:583:ALA:C	1:B:584:ILE:HD12	2.41	0.40
1:A:529:THR:OG1	4:A:2506:HOH:O	2.21	0.40
1:A:633:SER:HA	4:A:2681:HOH:O	2.21	0.40
1:B:285:ASP:HA	1:B:557:ARG:HH22	1.86	0.40
1:A:646:PHE:HA	1:A:725:ARG:NH1	2.36	0.40

All (1) symmetry-related close contacts are listed below. The label for Atom-2 includes the symmetry operator and encoded unit-cell translations to be applied.

Atom-1	Atom-2	Interatomic distance (Å)	Clash overlap (Å)
4:B:2157:HOH:O	4:B:2157:HOH:O[2_555]	2.01	0.19

5.3 Torsion angles [i](#)

5.3.1 Protein backbone [i](#)

In the following table, the Percentiles column shows the percent Ramachandran outliers of the chain as a percentile score with respect to all X-ray entries followed by that with respect to entries of similar resolution.

The Analysed column shows the number of residues for which the backbone conformation was analysed, and the total number of residues.

Mol	Chain	Analysed	Favoured	Allowed	Outliers	Percentiles	
1	A	696/715 (97%)	673 (97%)	23 (3%)	0	100	100
1	B	696/715 (97%)	675 (97%)	21 (3%)	0	100	100
All	All	1392/1430 (97%)	1348 (97%)	44 (3%)	0	100	100

There are no Ramachandran outliers to report.

5.3.2 Protein sidechains [i](#)

In the following table, the Percentiles column shows the percent sidechain outliers of the chain as a percentile score with respect to all X-ray entries followed by that with respect to entries of similar resolution.

The Analysed column shows the number of residues for which the sidechain conformation was analysed, and the total number of residues.

Mol	Chain	Analysed	Rotameric	Outliers	Percentiles	
1	A	578/595 (97%)	572 (99%)	6 (1%)	76	63
1	B	578/595 (97%)	571 (99%)	7 (1%)	71	56
All	All	1156/1190 (97%)	1143 (99%)	13 (1%)	73	60

All (13) residues with a non-rotameric sidechain are listed below:

Mol	Chain	Res	Type
1	A	113	MET
1	A	149	PHE
1	A	392	GLN
1	A	533	ASN
1	A	599	ASN
1	A	612	PHE
1	B	113	MET
1	B	149	PHE
1	B	215	HIS
1	B	392	GLN
1	B	533	ASN
1	B	599	ASN
1	B	612	PHE

Sometimes sidechains can be flipped to improve hydrogen bonding and reduce clashes. All (18) such sidechains are listed below:

Mol	Chain	Res	Type
1	A	215	HIS
1	A	277	GLN
1	A	311	HIS
1	A	376	ASN
1	A	392	GLN
1	A	472	ASN
1	A	533	ASN
1	A	599	ASN
1	A	606	HIS
1	B	215	HIS
1	B	277	GLN
1	B	311	HIS
1	B	376	ASN
1	B	392	GLN
1	B	472	ASN
1	B	533	ASN
1	B	599	ASN
1	B	606	HIS

5.3.3 RNA [i](#)

There are no RNA molecules in this entry.

5.4 Non-standard residues in protein, DNA, RNA chains [i](#)

There are no non-standard protein/DNA/RNA residues in this entry.

5.5 Carbohydrates [i](#)

There are no monosaccharides in this entry.

5.6 Ligand geometry [i](#)

4 ligands are modelled in this entry.

In the following table, the Counts columns list the number of bonds (or angles) for which Mogul statistics could be retrieved, the number of bonds (or angles) that are observed in the model and the number of bonds (or angles) that are defined in the Chemical Component Dictionary. The Link column lists molecule types, if any, to which the group is linked. The Z score for a bond length (or angle) is the number of standard deviations the observed value is removed from the expected value. A bond length (or angle) with $|Z| > 2$ is considered an outlier worth inspection. RMSZ is the root-mean-square of all Z scores of the bond lengths (or angles).

Mol	Type	Chain	Res	Link	Bond lengths			Bond angles		
					Counts	RMSZ	# Z > 2	Counts	RMSZ	# Z > 2
2	HDD	B	1881[B]	1	41,52,52	2.52	16 (39%)	31,89,89	3.27	24 (77%)
3	HEM	B	1882[A]	1	41,50,50	3.16	22 (53%)	45,82,82	3.97	24 (53%)
3	HEM	A	1883[A]	1	41,50,50	3.15	22 (53%)	45,82,82	3.98	24 (53%)
2	HDD	A	1880[B]	1	41,52,52	2.51	16 (39%)	31,89,89	3.21	22 (70%)

In the following table, the Chirals column lists the number of chiral outliers, the number of chiral centers analysed, the number of these observed in the model and the number defined in the Chemical Component Dictionary. Similar counts are reported in the Torsion and Rings columns. '-' means no outliers of that kind were identified.

Mol	Type	Chain	Res	Link	Chirals	Torsions	Rings
2	HDD	B	1881[B]	1	-	2/5/89/89	0/1/9/9
3	HEM	B	1882[A]	1	-	6/12/54/54	-
3	HEM	A	1883[A]	1	-	6/12/54/54	-
2	HDD	A	1880[B]	1	-	2/5/89/89	0/1/9/9

All (76) bond length outliers are listed below:

Mol	Chain	Res	Type	Atoms	Z	Observed(Å)	Ideal(Å)
2	A	1880[B]	HDD	O1D-C3D	7.54	1.59	1.46
2	B	1881[B]	HDD	O1D-C3D	7.28	1.58	1.46
3	A	1883[A]	HEM	C1D-C2D	7.13	1.58	1.44
3	B	1882[A]	HEM	C4D-C3D	7.11	1.57	1.45
3	B	1882[A]	HEM	C1D-C2D	7.02	1.58	1.44
3	A	1883[A]	HEM	C4D-C3D	6.97	1.57	1.45
3	A	1883[A]	HEM	C3D-C2D	6.54	1.50	1.36
3	B	1882[A]	HEM	C3D-C2D	6.54	1.50	1.36
3	B	1882[A]	HEM	CMD-C2D	6.08	1.63	1.50
3	A	1883[A]	HEM	CMD-C2D	6.04	1.63	1.50
3	A	1883[A]	HEM	FE-ND	5.73	2.25	1.96
3	B	1882[A]	HEM	FE-ND	5.58	2.24	1.96
3	B	1882[A]	HEM	CHA-C4D	5.30	1.48	1.35
3	A	1883[A]	HEM	CHA-C4D	5.27	1.48	1.35
2	B	1881[B]	HDD	OND-C2D	5.18	1.52	1.42
2	A	1880[B]	HDD	OND-C2D	5.16	1.52	1.42
2	A	1880[B]	HDD	O1D-CGD	-4.20	1.28	1.35
3	B	1882[A]	HEM	FE-NB	4.20	2.17	1.96
2	B	1881[B]	HDD	FE-ND	4.18	2.12	1.95
2	A	1880[B]	HDD	FE-ND	4.18	2.12	1.95
3	A	1883[A]	HEM	CHB-C1B	4.18	1.45	1.35

Continued on next page...

Continued from previous page...

Mol	Chain	Res	Type	Atoms	Z	Observed(Å)	Ideal(Å)
2	B	1881[B]	HDD	CMD-C2D	4.17	1.59	1.53
2	A	1880[B]	HDD	CMD-C2D	4.15	1.59	1.53
3	A	1883[A]	HEM	FE-NB	4.13	2.17	1.96
3	B	1882[A]	HEM	CHB-C1B	4.08	1.45	1.35
2	B	1881[B]	HDD	CHA-C4D	4.06	1.42	1.36
3	A	1883[A]	HEM	CBD-CAD	3.97	1.64	1.52
2	B	1881[B]	HDD	O1D-CGD	-3.96	1.29	1.35
2	A	1880[B]	HDD	CHA-C4D	3.93	1.42	1.36
3	B	1882[A]	HEM	CBD-CAD	3.79	1.64	1.52
2	B	1881[B]	HDD	C3B-CAB	3.57	1.55	1.47
2	A	1880[B]	HDD	C3B-CAB	3.56	1.55	1.47
3	B	1882[A]	HEM	C1A-NA	3.51	1.43	1.36
2	A	1880[B]	HDD	C1A-NA	3.49	1.43	1.36
3	A	1883[A]	HEM	C1A-NA	3.44	1.43	1.36
2	B	1881[B]	HDD	C1A-NA	3.44	1.43	1.36
2	B	1881[B]	HDD	CMC-C2C	3.19	1.58	1.51
2	A	1880[B]	HDD	CMC-C2C	3.09	1.58	1.51
3	B	1882[A]	HEM	C2C-C1C	3.05	1.49	1.42
3	A	1883[A]	HEM	C2C-C1C	3.00	1.49	1.42
2	B	1881[B]	HDD	CAD-C3D	2.95	1.58	1.53
3	A	1883[A]	HEM	CAD-C3D	-2.91	1.43	1.51
3	B	1882[A]	HEM	CAD-C3D	-2.89	1.43	1.51
2	A	1880[B]	HDD	C2B-C1B	2.83	1.49	1.42
3	B	1882[A]	HEM	CBB-CAB	2.83	1.44	1.30
3	A	1883[A]	HEM	C1B-C2B	2.83	1.50	1.44
3	A	1883[A]	HEM	CBB-CAB	2.80	1.44	1.30
2	A	1880[B]	HDD	CAD-C3D	2.80	1.58	1.53
2	B	1881[B]	HDD	C2B-C1B	2.80	1.48	1.42
3	A	1883[A]	HEM	CMC-C2C	2.78	1.58	1.51
3	B	1882[A]	HEM	CMC-C2C	2.75	1.58	1.51
3	B	1882[A]	HEM	C1B-C2B	2.75	1.49	1.44
3	A	1883[A]	HEM	CAB-C3B	2.70	1.54	1.47
3	B	1882[A]	HEM	CAB-C3B	2.68	1.54	1.47
2	B	1881[B]	HDD	CBA-CGA	2.63	1.56	1.50
3	B	1882[A]	HEM	CBA-CGA	2.62	1.56	1.50
3	A	1883[A]	HEM	CBA-CGA	2.41	1.56	1.50
2	A	1880[B]	HDD	CBA-CGA	2.38	1.56	1.50
3	B	1882[A]	HEM	O2A-CGA	-2.37	1.22	1.30
3	A	1883[A]	HEM	O2A-CGA	-2.35	1.22	1.30
2	A	1880[B]	HDD	O2A-CGA	-2.35	1.22	1.30
2	B	1881[B]	HDD	O2A-CGA	-2.35	1.22	1.30
3	B	1882[A]	HEM	C3C-C2C	2.34	1.43	1.40

Continued on next page...

Continued from previous page...

Mol	Chain	Res	Type	Atoms	Z	Observed(Å)	Ideal(Å)
3	A	1883[A]	HEM	O2D-CGD	-2.31	1.23	1.30
3	B	1882[A]	HEM	C1B-NB	-2.28	1.36	1.40
2	B	1881[B]	HDD	CBB-CAB	2.26	1.44	1.29
2	A	1880[B]	HDD	CBB-CAB	2.24	1.44	1.29
3	A	1883[A]	HEM	C1B-NB	-2.23	1.36	1.40
3	B	1882[A]	HEM	C4A-NA	2.21	1.40	1.36
3	B	1882[A]	HEM	O2D-CGD	-2.21	1.23	1.30
2	B	1881[B]	HDD	C4A-NA	2.19	1.40	1.36
3	A	1883[A]	HEM	C3C-C2C	2.12	1.43	1.40
2	A	1880[B]	HDD	C4A-NA	2.09	1.40	1.36
2	B	1881[B]	HDD	CAA-C2A	2.07	1.55	1.52
3	A	1883[A]	HEM	C4A-NA	2.05	1.40	1.36
2	A	1880[B]	HDD	CHD-C1D	2.03	1.39	1.36

All (94) bond angle outliers are listed below:

Mol	Chain	Res	Type	Atoms	Z	Observed(°)	Ideal(°)
3	A	1883[A]	HEM	CAD-C3D-C4D	-10.89	105.62	124.66
3	B	1882[A]	HEM	CAD-C3D-C4D	-10.88	105.64	124.66
3	B	1882[A]	HEM	CHA-C4D-ND	-8.25	114.19	124.38
3	A	1883[A]	HEM	CHA-C4D-ND	-8.23	114.22	124.38
2	B	1881[B]	HDD	O1D-C3D-CAD	-7.69	88.56	103.01
3	B	1882[A]	HEM	CAD-CBD-CGD	-7.29	97.92	113.60
2	A	1880[B]	HDD	O1D-C3D-CAD	-7.24	89.39	103.01
3	A	1883[A]	HEM	CAD-CBD-CGD	-7.23	98.04	113.60
3	B	1882[A]	HEM	CHD-C1D-C2D	-6.94	114.14	124.98
3	A	1883[A]	HEM	CHD-C1D-C2D	-6.91	114.18	124.98
3	A	1883[A]	HEM	C4D-ND-C1D	6.61	111.90	105.07
3	B	1882[A]	HEM	CMD-C2D-C1D	-6.58	115.02	125.04
3	B	1882[A]	HEM	C4D-ND-C1D	6.55	111.83	105.07
3	A	1883[A]	HEM	CMD-C2D-C1D	-6.47	115.19	125.04
3	A	1883[A]	HEM	CBD-CAD-C3D	-6.19	95.42	112.63
3	B	1882[A]	HEM	CHD-C1D-ND	6.11	131.07	124.43
3	B	1882[A]	HEM	CBD-CAD-C3D	-6.11	95.65	112.63
3	A	1883[A]	HEM	CHD-C1D-ND	5.98	130.93	124.43
2	B	1881[B]	HDD	CHD-C1D-ND	5.76	132.65	124.20
3	A	1883[A]	HEM	C3D-C4D-ND	-5.73	103.79	110.17
3	B	1882[A]	HEM	C3D-C4D-ND	-5.73	103.79	110.17
2	A	1880[B]	HDD	CHD-C1D-ND	5.69	132.55	124.20
3	A	1883[A]	HEM	CHC-C4B-NB	5.44	130.34	124.43
3	B	1882[A]	HEM	CHC-C4B-NB	5.42	130.32	124.43
2	A	1880[B]	HDD	C2B-C3B-C4B	5.34	110.62	106.90

Continued on next page...

Continued from previous page...

Mol	Chain	Res	Type	Atoms	Z	Observed(°)	Ideal(°)
2	B	1881[B]	HDD	C2B-C3B-C4B	5.33	110.62	106.90
2	A	1880[B]	HDD	O1D-CGD-CBD	-5.19	104.95	110.19
2	B	1881[B]	HDD	O1D-CGD-CBD	-5.11	105.04	110.19
2	B	1881[B]	HDD	CHA-C4D-ND	-4.84	117.11	124.20
3	A	1883[A]	HEM	C4B-C3B-C2B	4.79	110.92	107.11
3	B	1882[A]	HEM	C4B-C3B-C2B	4.77	110.90	107.11
2	A	1880[B]	HDD	CHA-C4D-ND	-4.69	117.32	124.20
3	B	1882[A]	HEM	C1B-NB-C4B	4.63	109.85	105.07
3	A	1883[A]	HEM	C1B-NB-C4B	4.63	109.85	105.07
3	B	1882[A]	HEM	O1D-CGD-CBD	-4.16	109.73	123.08
3	A	1883[A]	HEM	C2D-C1D-ND	-4.15	104.91	109.88
3	B	1882[A]	HEM	C2D-C1D-ND	-4.14	104.93	109.88
3	A	1883[A]	HEM	O1D-CGD-CBD	-4.11	109.88	123.08
3	A	1883[A]	HEM	C3B-C2B-C1B	-4.00	103.52	106.49
3	B	1882[A]	HEM	C3B-C2B-C1B	-4.00	103.52	106.49
2	A	1880[B]	HDD	O2A-CGA-O1A	3.81	132.79	123.30
2	B	1881[B]	HDD	C4C-CHD-C1D	-3.81	122.58	130.12
2	B	1881[B]	HDD	O2A-CGA-O1A	3.72	132.56	123.30
3	A	1883[A]	HEM	O2A-CGA-O1A	3.71	132.56	123.30
2	A	1880[B]	HDD	C4C-CHD-C1D	-3.70	122.78	130.12
3	B	1882[A]	HEM	O2A-CGA-O1A	3.63	132.34	123.30
2	A	1880[B]	HDD	C2D-C1D-CHD	-3.54	118.43	124.28
2	B	1881[B]	HDD	C2D-C1D-CHD	-3.54	118.44	124.28
2	A	1880[B]	HDD	CAA-CBA-CGA	-3.40	104.21	113.76
2	B	1881[B]	HDD	CAA-CBA-CGA	-3.40	104.23	113.76
3	B	1882[A]	HEM	O2D-CGD-CBD	3.34	124.75	114.03
2	B	1881[B]	HDD	O1D-CGD-O2D	3.33	123.77	120.80
3	A	1883[A]	HEM	O2D-CGD-CBD	3.27	124.55	114.03
3	A	1883[A]	HEM	CAA-CBA-CGA	-3.25	104.65	113.76
3	B	1882[A]	HEM	CAA-CBA-CGA	-3.21	104.77	113.76
2	B	1881[B]	HDD	CBA-CAA-C2A	3.13	117.97	112.62
2	A	1880[B]	HDD	O1D-CGD-O2D	3.06	123.53	120.80
3	A	1883[A]	HEM	C3C-C4C-NC	-3.04	105.21	110.94
3	A	1883[A]	HEM	CAD-C3D-C2D	3.02	133.50	127.88
2	B	1881[B]	HDD	O1A-CGA-CBA	-3.02	113.39	123.08
2	A	1880[B]	HDD	O1A-CGA-CBA	-3.00	113.45	123.08
3	B	1882[A]	HEM	C3C-C4C-NC	-2.99	105.29	110.94
2	A	1880[B]	HDD	O1D-C3D-C4D	-2.98	102.20	108.25
3	B	1882[A]	HEM	CBA-CAA-C2A	2.96	117.67	112.62
3	B	1882[A]	HEM	CAD-C3D-C2D	2.92	133.32	127.88
2	A	1880[B]	HDD	CBA-CAA-C2A	2.90	117.58	112.62
3	A	1883[A]	HEM	O1A-CGA-CBA	-2.90	113.77	123.08

Continued on next page...

Continued from previous page...

Mol	Chain	Res	Type	Atoms	Z	Observed(°)	Ideal(°)
2	B	1881[B]	HDD	C3D-C4D-CHA	2.87	132.87	124.34
2	A	1880[B]	HDD	C3D-C4D-CHA	2.83	132.73	124.34
3	A	1883[A]	HEM	CBA-CAA-C2A	2.82	117.43	112.62
3	B	1882[A]	HEM	O1A-CGA-CBA	-2.81	114.04	123.08
2	A	1880[B]	HDD	C3B-C4B-NB	-2.74	105.78	110.94
2	B	1881[B]	HDD	C3B-C4B-NB	-2.74	105.78	110.94
2	B	1881[B]	HDD	OND-C2D-CMD	-2.73	104.56	109.59
3	A	1883[A]	HEM	CMA-C3A-C2A	2.63	129.90	124.94
3	A	1883[A]	HEM	CMA-C3A-C4A	-2.62	124.44	128.46
2	B	1881[B]	HDD	O1D-C3D-C4D	-2.62	102.93	108.25
2	A	1880[B]	HDD	OND-C2D-CMD	-2.58	104.83	109.59
2	A	1880[B]	HDD	CMA-C3A-C2A	2.53	129.72	124.94
3	B	1882[A]	HEM	CMA-C3A-C2A	2.48	129.62	124.94
2	B	1881[B]	HDD	CMA-C3A-C2A	2.44	129.54	124.94
2	B	1881[B]	HDD	CMB-C2B-C3B	2.43	129.22	124.68
3	B	1882[A]	HEM	CMA-C3A-C4A	-2.43	124.73	128.46
2	A	1880[B]	HDD	CMB-C2B-C3B	2.39	129.15	124.68
2	A	1880[B]	HDD	CMA-C3A-C4A	-2.39	124.80	128.46
2	B	1881[B]	HDD	OND-C2D-C3D	-2.32	104.69	110.45
2	A	1880[B]	HDD	OND-C2D-C3D	-2.30	104.74	110.45
2	B	1881[B]	HDD	C4A-C3A-C2A	-2.25	105.43	107.00
2	B	1881[B]	HDD	CMA-C3A-C4A	-2.24	125.02	128.46
2	B	1881[B]	HDD	C3C-C4C-NC	-2.20	106.37	109.21
2	B	1881[B]	HDD	CAD-CBD-CGD	-2.18	101.18	104.56
2	A	1880[B]	HDD	C4A-C3A-C2A	-2.18	105.48	107.00
2	A	1880[B]	HDD	C3C-C4C-NC	-2.14	106.44	109.21
2	B	1881[B]	HDD	CMD-C2D-C1D	-2.07	108.95	112.63

There are no chirality outliers.

All (16) torsion outliers are listed below:

Mol	Chain	Res	Type	Atoms
3	B	1882[A]	HEM	C2B-C3B-CAB-CBB
3	B	1882[A]	HEM	C4B-C3B-CAB-CBB
3	A	1883[A]	HEM	C2B-C3B-CAB-CBB
3	A	1883[A]	HEM	C4B-C3B-CAB-CBB
2	A	1880[B]	HDD	CAA-CBA-CGA-O1A
2	B	1881[B]	HDD	CAA-CBA-CGA-O2A
2	B	1881[B]	HDD	CAA-CBA-CGA-O1A
2	A	1880[B]	HDD	CAA-CBA-CGA-O2A
3	B	1882[A]	HEM	CAA-CBA-CGA-O1A
3	B	1882[A]	HEM	CAA-CBA-CGA-O2A

Continued on next page...

Continued from previous page...

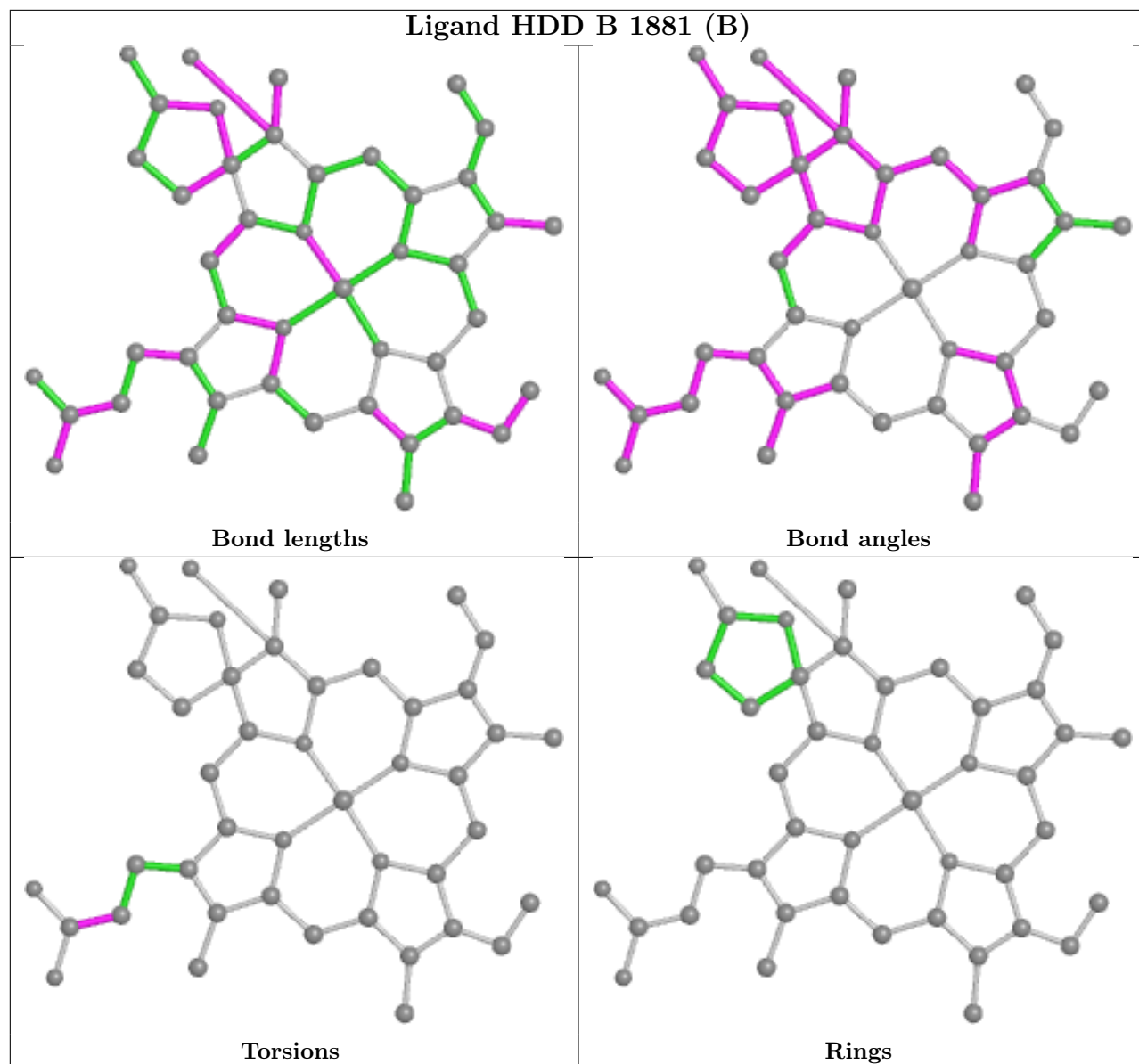
Mol	Chain	Res	Type	Atoms
3	A	1883[A]	HEM	CAA-CBA-CGA-O1A
3	A	1883[A]	HEM	CAA-CBA-CGA-O2A
3	A	1883[A]	HEM	CAD-CBD-CGD-O2D
3	B	1882[A]	HEM	CAD-CBD-CGD-O2D
3	B	1882[A]	HEM	CAD-CBD-CGD-O1D
3	A	1883[A]	HEM	CAD-CBD-CGD-O1D

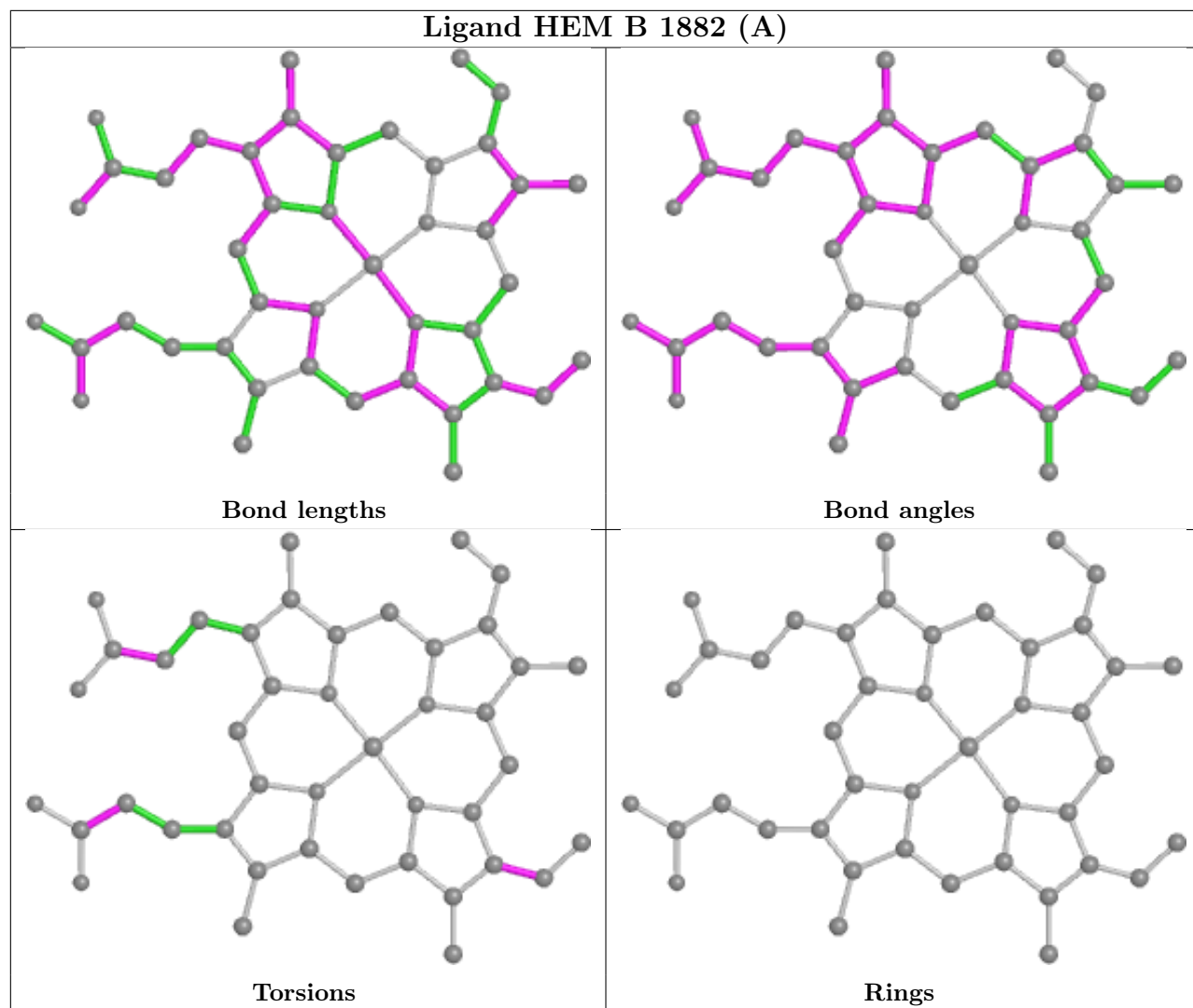
There are no ring outliers.

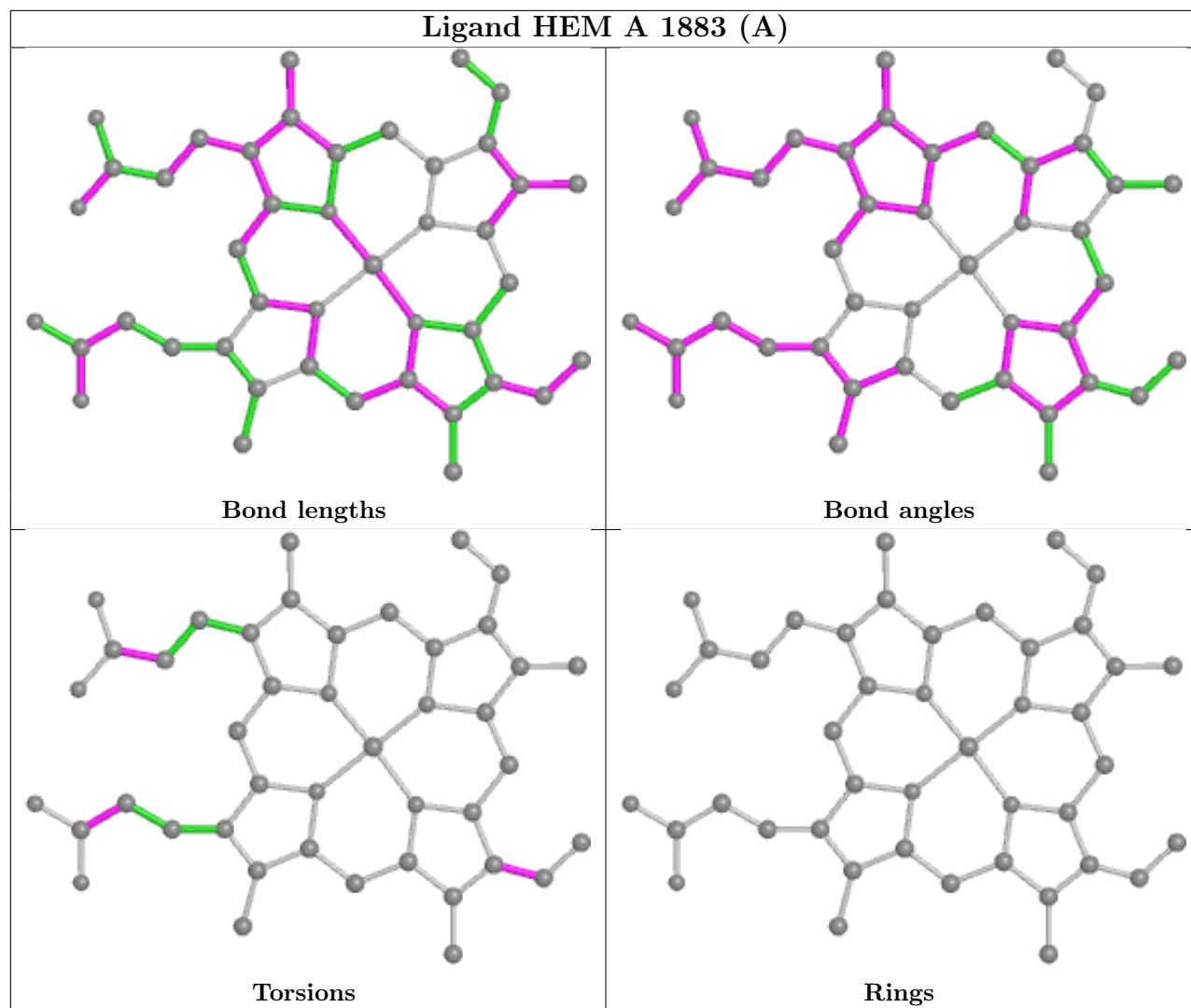
4 monomers are involved in 6 short contacts:

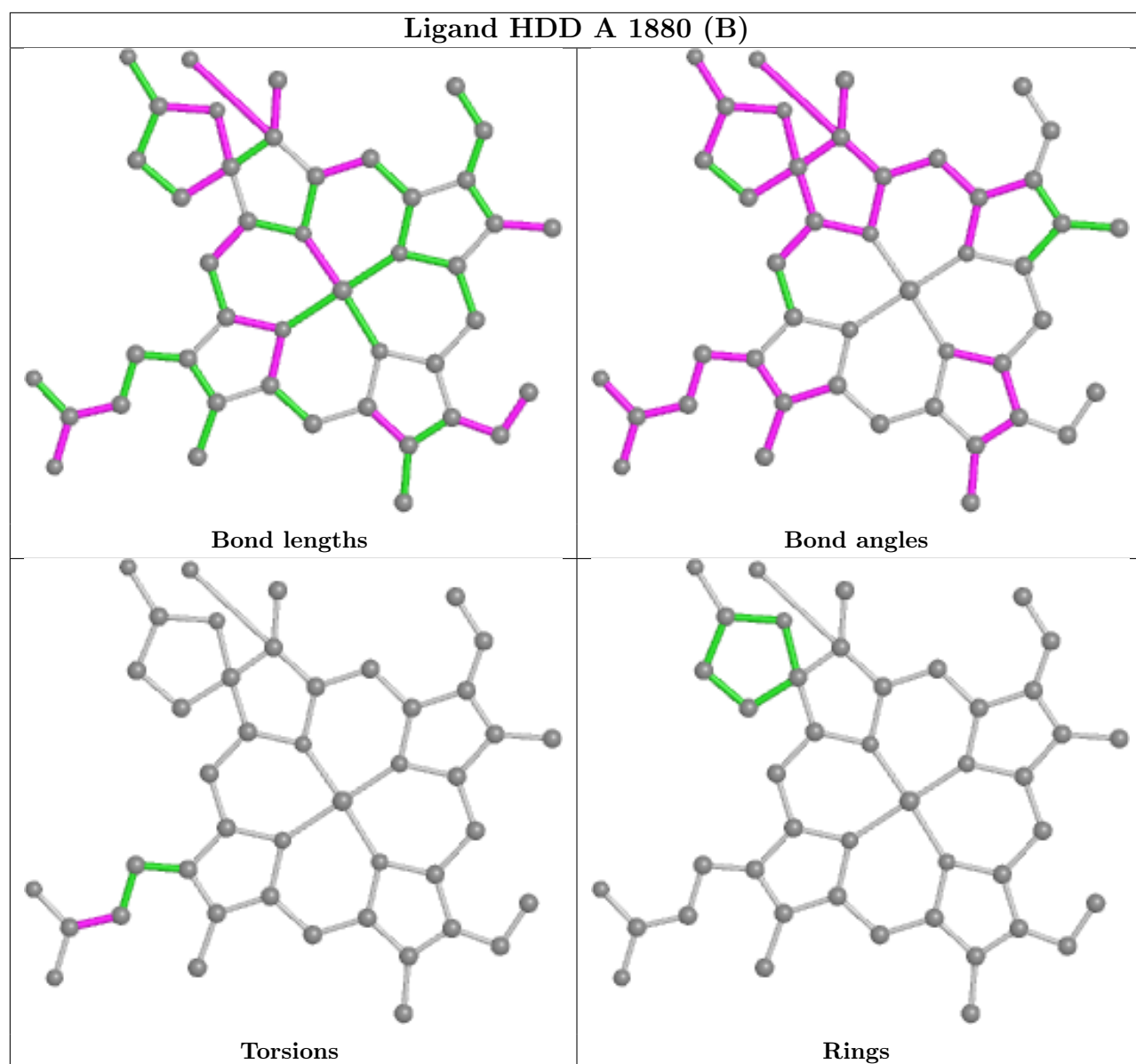
Mol	Chain	Res	Type	Clashes	Symm-Clashes
2	B	1881[B]	HDD	2	0
3	B	1882[A]	HEM	1	0
3	A	1883[A]	HEM	1	0
2	A	1880[B]	HDD	2	0

The following is a two-dimensional graphical depiction of Mogul quality analysis of bond lengths, bond angles, torsion angles, and ring geometry for all instances of the Ligand of Interest. In addition, ligands with molecular weight > 250 and outliers as shown on the validation Tables will also be included. For torsion angles, if less than 5% of the Mogul distribution of torsion angles is within 10 degrees of the torsion angle in question, then that torsion angle is considered an outlier. Any bond that is central to one or more torsion angles identified as an outlier by Mogul will be highlighted in the graph. For rings, the root-mean-square deviation (RMSD) between the ring in question and similar rings identified by Mogul is calculated over all ring torsion angles. If the average RMSD is greater than 60 degrees and the minimal RMSD between the ring in question and any Mogul-identified rings is also greater than 60 degrees, then that ring is considered an outlier. The outliers are highlighted in purple. The color gray indicates Mogul did not find sufficient equivalents in the CSD to analyse the geometry.









5.7 Other polymers [i](#)

There are no such residues in this entry.

5.8 Polymer linkage issues [i](#)

There are no chain breaks in this entry.

6 Fit of model and data

6.1 Protein, DNA and RNA chains

In the following table, the column labelled ‘#RSRZ > 2’ contains the number (and percentage) of RSRZ outliers, followed by percent RSRZ outliers for the chain as percentile scores relative to all X-ray entries and entries of similar resolution. The OWAB column contains the minimum, median, 95th percentile and maximum values of the occupancy-weighted average B-factor per residue. The column labelled ‘Q < 0.9’ lists the number of (and percentage) of residues with an average occupancy less than 0.9.

Mol	Chain	Analysed	<RSRZ>	#RSRZ>2	OWAB(Å ²)	Q<0.9
1	A	698/715 (97%)	-0.02	10 (1%) 75 82	10, 18, 31, 45	0
1	B	698/715 (97%)	0.00	15 (2%) 63 71	10, 18, 32, 45	0
All	All	1396/1430 (97%)	-0.01	25 (1%) 68 76	10, 18, 32, 45	0

All (25) RSRZ outliers are listed below:

Mol	Chain	Res	Type	RSRZ
1	A	527	THR	4.3
1	A	706	ALA	4.2
1	B	706	ALA	4.1
1	A	705	GLY	3.8
1	B	527	THR	3.6
1	A	528	THR	3.3
1	B	526	PRO	3.3
1	A	524	GLU	3.3
1	B	707	ALA	3.1
1	B	676	GLU	2.8
1	B	524	GLU	2.8
1	B	704	LYS	2.7
1	A	404	MET	2.7
1	B	549	ALA	2.7
1	B	705	GLY	2.7
1	B	311	HIS	2.6
1	A	707	ALA	2.4
1	B	598	ALA	2.3
1	A	274	LEU	2.3
1	B	308	GLU	2.3
1	A	143	VAL	2.2
1	A	536	ARG	2.2
1	B	404	MET	2.1
1	B	664	LYS	2.1

Continued on next page...

Continued from previous page...

Mol	Chain	Res	Type	RSRZ
1	B	312	LYS	2.1

6.2 Non-standard residues in protein, DNA, RNA chains [i](#)

There are no non-standard protein/DNA/RNA residues in this entry.

6.3 Carbohydrates [i](#)

There are no monosaccharides in this entry.

6.4 Ligands [i](#)

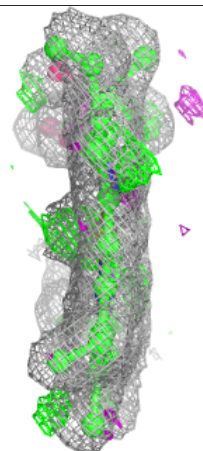
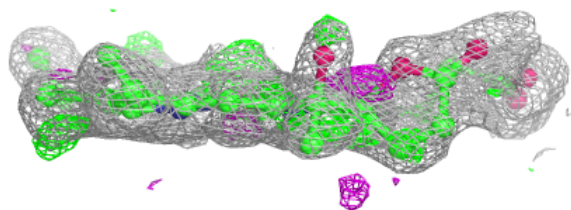
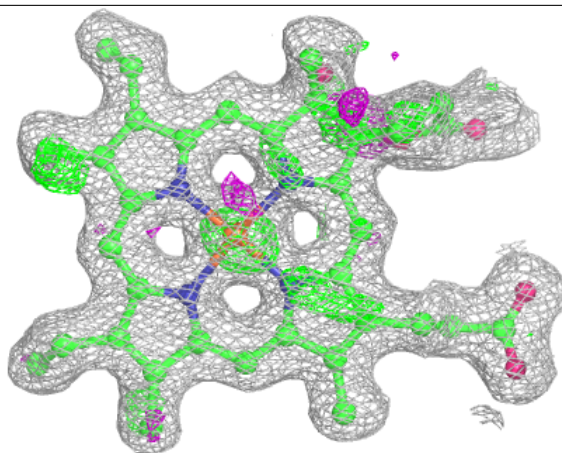
In the following table, the Atoms column lists the number of modelled atoms in the group and the number defined in the chemical component dictionary. The B-factors column lists the minimum, median, 95th percentile and maximum values of B factors of atoms in the group. The column labelled 'Q< 0.9' lists the number of atoms with occupancy less than 0.9.

Mol	Type	Chain	Res	Atoms	RSCC	RSR	B-factors(Å ²)	Q<0.9
2	HDD	A	1880[B]	44/44	0.96	0.12	4,6,15,16	44
2	HDD	B	1881[B]	44/44	0.96	0.12	4,6,15,16	44
3	HEM	A	1883[A]	43/43	0.96	0.12	9,13,18,18	43
3	HEM	B	1882[A]	43/43	0.97	0.12	9,13,18,19	43

The following is a graphical depiction of the model fit to experimental electron density of all instances of the Ligand of Interest. In addition, ligands with molecular weight > 250 and outliers as shown on the geometry validation Tables will also be included. Each fit is shown from different orientation to approximate a three-dimensional view.

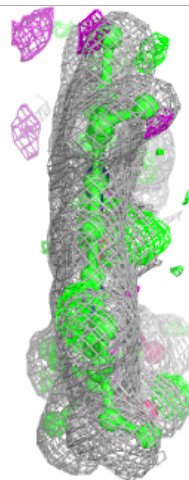
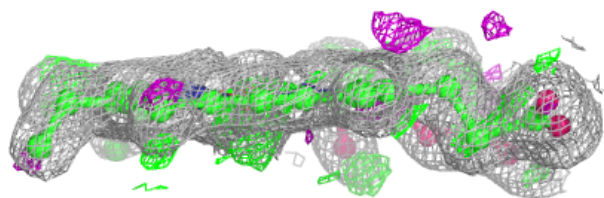
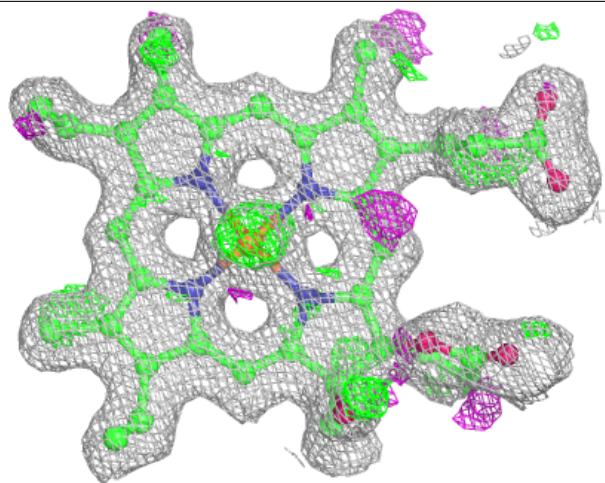
Electron density around HDD A 1880 (B):

$2mF_o-DF_c$ (at 0.7 rmsd) in gray
 mF_o-DF_c (at 3 rmsd) in purple (negative)
and green (positive)



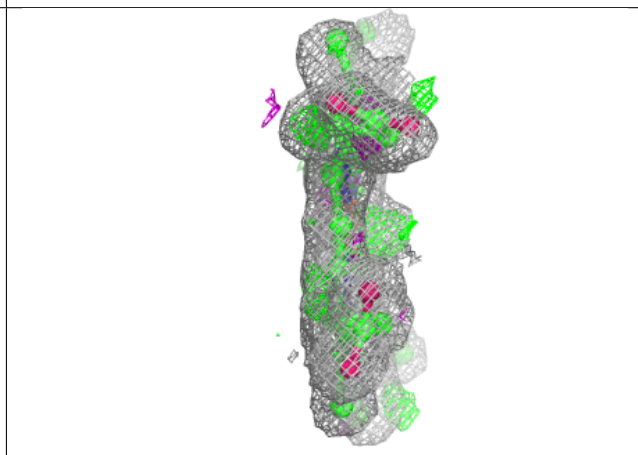
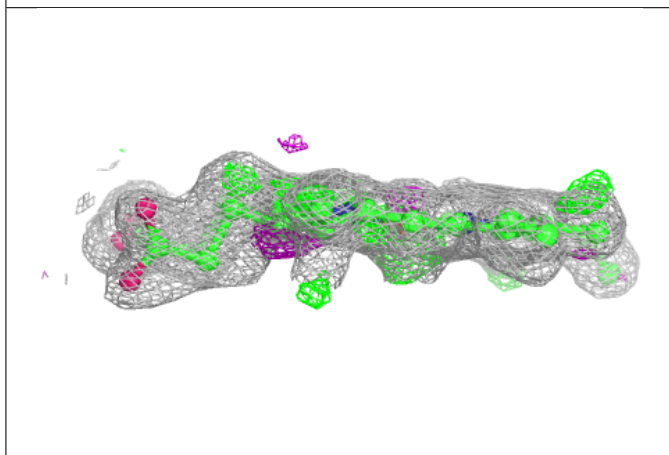
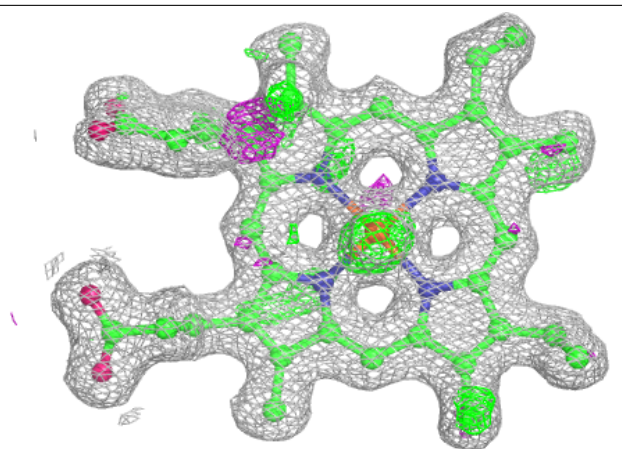
Electron density around HDD B 1881 (B):

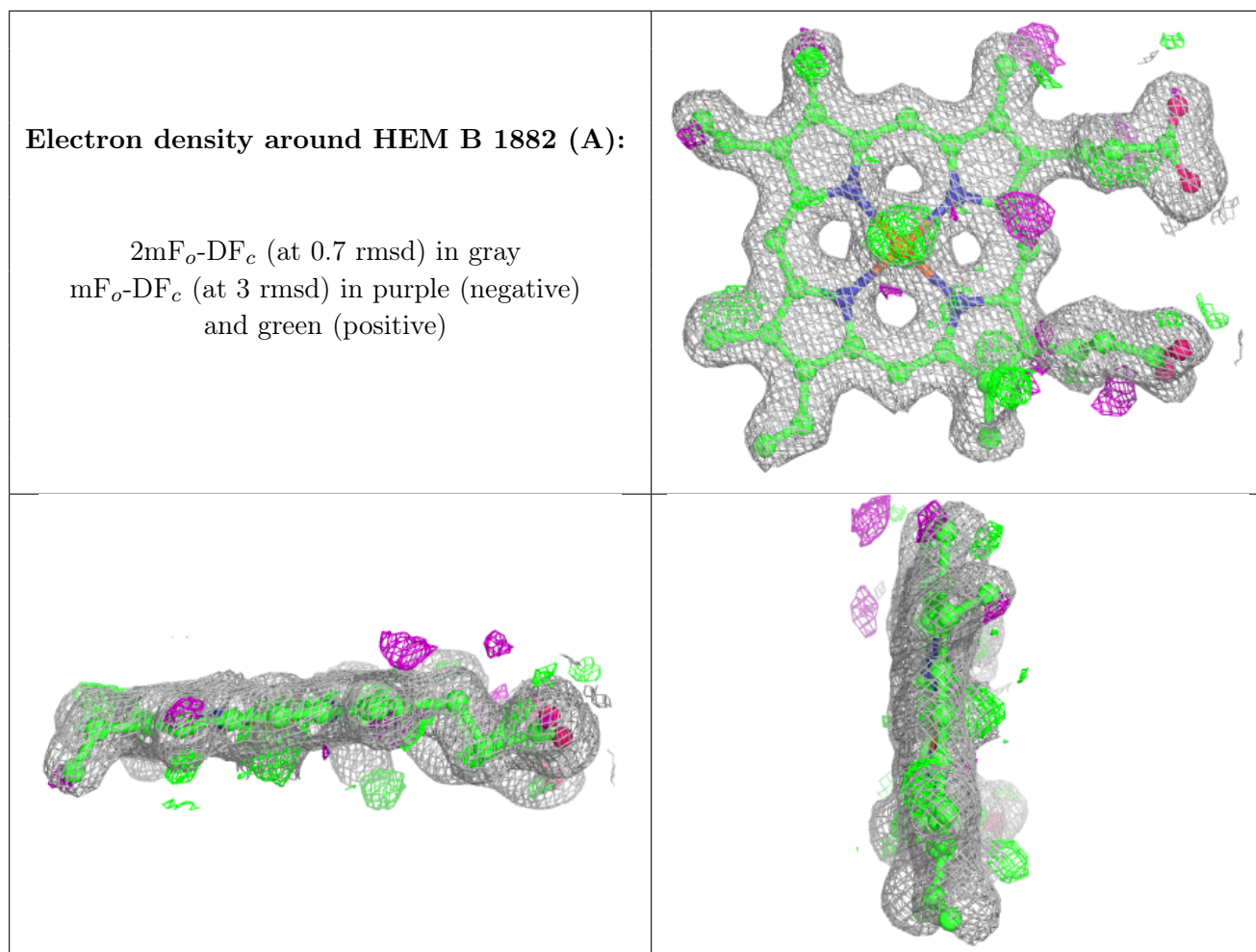
$2mF_o-DF_c$ (at 0.7 rmsd) in gray
 mF_o-DF_c (at 3 rmsd) in purple (negative)
and green (positive)



Electron density around HEM A 1883 (A):

$2mF_o-DF_c$ (at 0.7 rmsd) in gray
 mF_o-DF_c (at 3 rmsd) in purple (negative)
and green (positive)





6.5 Other polymers [i](#)

There are no such residues in this entry.