



wwPDB X-ray Structure Validation Summary Report ⓘ

Sep 3, 2023 – 03:04 PM EDT

PDB ID : 3SE2
Title : Human poly(ADP-ribose) polymerase 14 (PARP14/ARTD8) - catalytic domain in complex with 6(5H)-phenanthridinone
Authors : Karlberg, T.; Schutz, P.; Arrowsmith, C.H.; Berglund, H.; Bountra, C.; Collins, R.; Edwards, A.M.; Ekblad, T.; Graslund, S.; Kouznetsova, E.; Moche, M.; Nordlund, P.; Nyman, T.; Thorsell, A.G.; Tresaugues, L.; Weigelt, J.; Siponen, M.I.; Schuler, H.; Structural Genomics Consortium (SGC)
Deposited on : 2011-06-10
Resolution : 2.30 Å(reported)

This is a wwPDB X-ray Structure Validation Summary Report for a publicly released PDB entry.

We welcome your comments at validation@mail.wwpdb.org

A user guide is available at

<https://www.wwpdb.org/validation/2017/XrayValidationReportHelp>

with specific help available everywhere you see the ⓘ symbol.

The types of validation reports are described at

<http://www.wwpdb.org/validation/2017/FAQs#types>.

The following versions of software and data (see [references ⓘ](#)) were used in the production of this report:

MolProbity : 4.02b-467
Mogul : 1.8.5 (274361), CSD as541be (2020)
Xtriage (Phenix) : 1.13
EDS : 2.35
Percentile statistics : 20191225.v01 (using entries in the PDB archive December 25th 2019)
Refmac : 5.8.0158
CCP4 : 7.0.044 (Gargrove)
Ideal geometry (proteins) : Engh & Huber (2001)
Ideal geometry (DNA, RNA) : Parkinson et al. (1996)

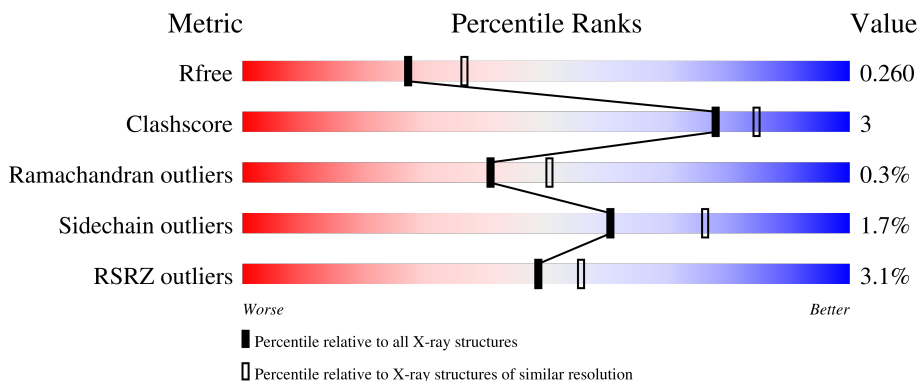
1 Overall quality at a glance

The following experimental techniques were used to determine the structure:

X-RAY DIFFRACTION

The reported resolution of this entry is 2.30 Å.

Percentile scores (ranging between 0-100) for global validation metrics of the entry are shown in the following graphic. The table shows the number of entries on which the scores are based.



Metric	Whole archive (#Entries)	Similar resolution (#Entries, resolution range(Å))
R_{free}	130704	5042 (2.30-2.30)
Clashscore	141614	5643 (2.30-2.30)
Ramachandran outliers	138981	5575 (2.30-2.30)
Sidechain outliers	138945	5575 (2.30-2.30)
RSRZ outliers	127900	4938 (2.30-2.30)

The table below summarises the geometric issues observed across the polymeric chains and their fit to the electron density. The red, orange, yellow and green segments of the lower bar indicate the fraction of residues that contain outliers for ≥ 3 , 2, 1 and 0 types of geometric quality criteria respectively. A grey segment represents the fraction of residues that are not modelled. The numeric value for each fraction is indicated below the corresponding segment, with a dot representing fractions $\leq 5\%$. The upper red bar (where present) indicates the fraction of residues that have poor fit to the electron density. The numeric value is given above the bar.

Mol	Chain	Length	Quality of chain
1	A	193	2% 92% 5% .
1	B	193	% 90% 7% .
1	C	193	5% 90% 8% ..
1	D	193	4% 86% 11% ...

Validation Pipeline (wwPDB-VP) : 2.35

2 Entry composition [i](#)

There are 7 unique types of molecules in this entry. The entry contains 6287 atoms, of which 0 are hydrogens and 0 are deuteriums.

In the tables below, the ZeroOcc column contains the number of atoms modelled with zero occupancy, the AltConf column contains the number of residues with at least one atom in alternate conformation and the Trace column contains the number of residues modelled with at most 2 atoms.

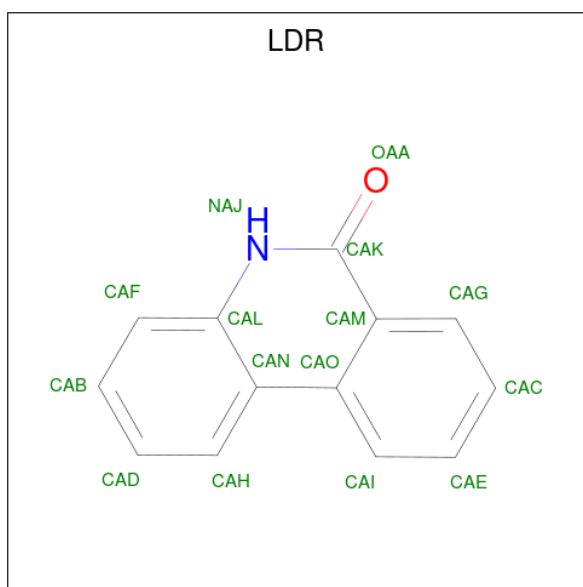
- Molecule 1 is a protein called Poly [ADP-ribose] polymerase 14.

Mol	Chain	Residues	Atoms					ZeroOcc	AltConf	Trace
			Total	C	N	O	S			
1	A	186	1503	952	265	282	4	0	0	0
1	B	187	1502	951	264	283	4	0	0	0
1	C	189	1526	965	270	287	4	0	0	0
1	D	189	1520	963	268	285	4	0	0	0

There are 8 discrepancies between the modelled and reference sequences:

Chain	Residue	Modelled	Actual	Comment	Reference
A	1528	SER	-	expression tag	UNP Q460N5
A	1529	MET	-	expression tag	UNP Q460N5
B	1528	SER	-	expression tag	UNP Q460N5
B	1529	MET	-	expression tag	UNP Q460N5
C	1528	SER	-	expression tag	UNP Q460N5
C	1529	MET	-	expression tag	UNP Q460N5
D	1528	SER	-	expression tag	UNP Q460N5
D	1529	MET	-	expression tag	UNP Q460N5

- Molecule 2 is phenanthridin-6(5H)-one (three-letter code: LDR) (formula: C₁₃H₉NO).



Mol	Chain	Residues	Atoms				ZeroOcc	AltConf
			Total	C	N	O		
2	A	1	15	13	1	1	0	0
2	B	1	15	13	1	1	0	0

- Molecule 3 is GLYCEROL (three-letter code: GOL) (formula: $C_3H_8O_3$).



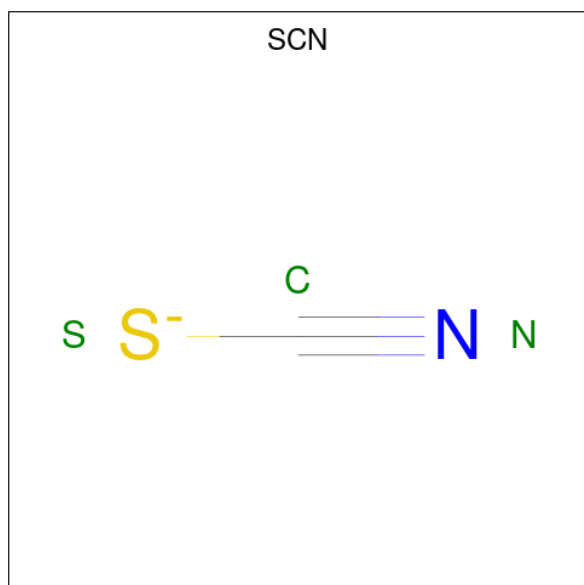
Mol	Chain	Residues	Atoms			ZeroOcc	AltConf
			Total	C	O		
3	A	1	6	3	3	0	0
3	A	1	6	3	3	0	0

Continued on next page...

Continued from previous page...

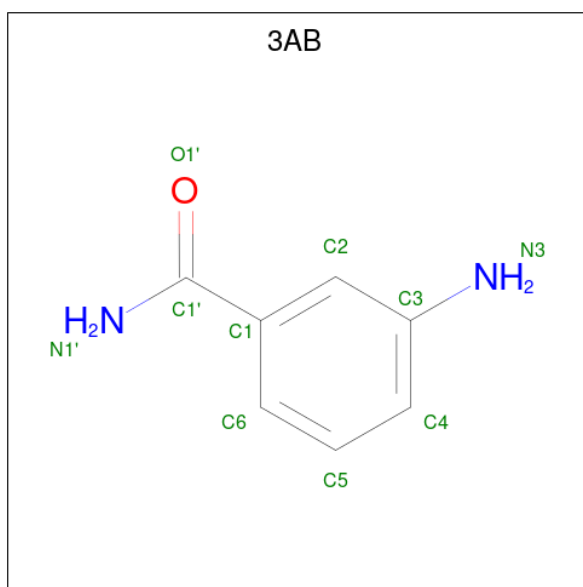
Mol	Chain	Residues	Atoms			ZeroOcc	AltConf
3	C	1	Total	C	O	0	0
			6	3	3		
3	D	1	Total	C	O	0	0
			6	3	3		

- Molecule 4 is THIOCYANATE ION (three-letter code: SCN) (formula: CNS).



Mol	Chain	Residues	Atoms				ZeroOcc	AltConf
4	B	1	Total	C	N	S	0	0
			3	1	1	1		
4	C	1	Total	C	N	S	0	0
			3	1	1	1		
4	D	1	Total	C	N	S	0	0
			3	1	1	1		

- Molecule 5 is 3-aminobenzamide (three-letter code: 3AB) (formula: C₇H₈N₂O).



Mol	Chain	Residues	Atoms				ZeroOcc	AltConf
5	C	1	Total	C	N	O	0	0
			10	7	2	1		
5	D	1	Total	C	N	O	0	0
			10	7	2	1		

- Molecule 6 is CHLORIDE ION (three-letter code: CL) (formula: Cl).

Mol	Chain	Residues	Atoms		ZeroOcc	AltConf
6	C	1	Total	Cl	0	0
			1	1		
6	D	1	Total	Cl	0	0
			1	1		

- Molecule 7 is water.

Mol	Chain	Residues	Atoms		ZeroOcc	AltConf
7	A	32	Total	O	0	0
			32	32		
7	B	40	Total	O	0	0
			40	40		
7	C	36	Total	O	0	0
			36	36		
7	D	43	Total	O	0	0
			43	43		

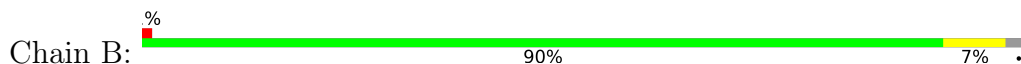
3 Residue-property plots [i](#)

These plots are drawn for all protein, RNA, DNA and oligosaccharide chains in the entry. The first graphic for a chain summarises the proportions of the various outlier classes displayed in the second graphic. The second graphic shows the sequence view annotated by issues in geometry and electron density. Residues are color-coded according to the number of geometric quality criteria for which they contain at least one outlier: green = 0, yellow = 1, orange = 2 and red = 3 or more. A red dot above a residue indicates a poor fit to the electron density ($RSRZ > 2$). Stretches of 2 or more consecutive residues without any outlier are shown as a green connector. Residues present in the sample, but not in the model, are shown in grey.

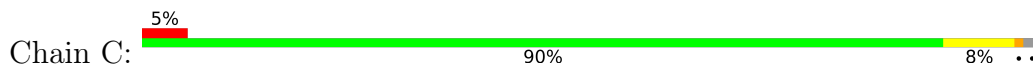
- Molecule 1: Poly [ADP-ribose] polymerase 14



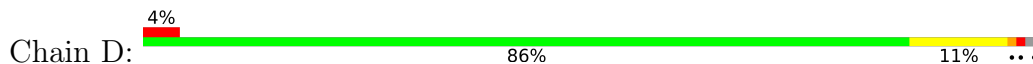
- Molecule 1: Poly [ADP-ribose] polymerase 14



- Molecule 1: Poly [ADP-ribose] polymerase 14



- Molecule 1: Poly [ADP-ribose] polymerase 14



4 Data and refinement statistics

Property	Value	Source
Space group	P 65 2 2	Depositor
Cell constants a, b, c, α , β , γ	82.37Å 82.37Å 434.48Å 90.00° 90.00° 120.00°	Depositor
Resolution (Å)	34.57 – 2.30 34.55 – 2.30	Depositor EDS
% Data completeness (in resolution range)	100.0 (34.57-2.30) 100.0 (34.55-2.30)	Depositor EDS
R_{merge}	0.11	Depositor
R_{sym}	0.17	Depositor
$\langle I/\sigma(I) \rangle$ ¹	3.78 (at 2.29Å)	Xtrriage
Refinement program	REFMAC 5.5.0102	Depositor
R, R_{free}	0.208 , 0.255 0.210 , 0.260	Depositor DCC
R_{free} test set	2011 reflections (4.98%)	wwPDB-VP
Wilson B-factor (Å ²)	23.3	Xtrriage
Anisotropy	0.185	Xtrriage
Bulk solvent k_{sol} (e/Å ³), B_{sol} (Å ²)	0.35 , 32.5	EDS
L-test for twinning ²	$\langle L \rangle = 0.43$, $\langle L^2 \rangle = 0.26$	Xtrriage
Estimated twinning fraction	No twinning to report.	Xtrriage
F_o, F_c correlation	0.92	EDS
Total number of atoms	6287	wwPDB-VP
Average B, all atoms (Å ²)	21.0	wwPDB-VP

Xtrriage's analysis on translational NCS is as follows: *The largest off-origin peak in the Patterson function is 6.90% of the height of the origin peak. No significant pseudotranslation is detected.*

¹Intensities estimated from amplitudes.

²Theoretical values of $\langle |L| \rangle$, $\langle L^2 \rangle$ for acentric reflections are 0.5, 0.333 respectively for untwinned datasets, and 0.375, 0.2 for perfectly twinned datasets.

5 Model quality [i](#)

5.1 Standard geometry [i](#)

Bond lengths and bond angles in the following residue types are not validated in this section: GOL, CL, 3AB, LDR, SCN

The Z score for a bond length (or angle) is the number of standard deviations the observed value is removed from the expected value. A bond length (or angle) with $|Z| > 5$ is considered an outlier worth inspection. RMSZ is the root-mean-square of all Z scores of the bond lengths (or angles).

Mol	Chain	Bond lengths		Bond angles	
		RMSZ	# Z >5	RMSZ	# Z >5
1	A	0.60	0/1545	0.65	0/2098
1	B	0.55	0/1545	0.65	0/2102
1	C	0.56	0/1570	0.66	0/2135
1	D	0.62	0/1564	0.69	1/2127 (0.0%)
All	All	0.58	0/6224	0.66	1/8462 (0.0%)

There are no bond length outliers.

All (1) bond angle outliers are listed below:

Mol	Chain	Res	Type	Atoms	Z	Observed(°)	Ideal(°)
1	D	1681	ASN	C-N-CD	-5.06	109.47	120.60

There are no chirality outliers.

There are no planarity outliers.

5.2 Too-close contacts [i](#)

In the following table, the Non-H and H(model) columns list the number of non-hydrogen atoms and hydrogen atoms in the chain respectively. The H(added) column lists the number of hydrogen atoms added and optimized by MolProbity. The Clashes column lists the number of clashes within the asymmetric unit, whereas Symm-Clashes lists symmetry-related clashes.

Mol	Chain	Non-H	H(model)	H(added)	Clashes	Symm-Clashes
1	A	1503	0	1426	7	0
1	B	1502	0	1411	6	0
1	C	1526	0	1446	8	0
1	D	1520	0	1438	16	1
2	A	15	0	9	2	0
2	B	15	0	9	1	0

Continued on next page...

Continued from previous page...

Mol	Chain	Non-H	H(model)	H(added)	Clashes	Symm-Clashes
3	A	12	0	16	2	0
3	C	6	0	8	0	0
3	D	6	0	8	1	0
4	B	3	0	0	0	0
4	C	3	0	0	0	0
4	D	3	0	0	0	0
5	C	10	0	8	0	0
5	D	10	0	8	0	0
6	C	1	0	0	0	0
6	D	1	0	0	0	0
7	A	32	0	0	0	0
7	B	40	0	0	0	0
7	C	36	0	0	1	0
7	D	43	0	0	1	0
All	All	6287	0	5787	35	1

The all-atom clashscore is defined as the number of clashes found per 1000 atoms (including hydrogen atoms). The all-atom clashscore for this structure is 3.

The worst 5 of 35 close contacts within the same asymmetric unit are listed below, sorted by their clash magnitude.

Atom-1	Atom-2	Interatomic distance (Å)	Clash overlap (Å)
1:A:1624:ASN:HA	2:A:1:LDR:HAD	1.53	0.90
1:A:1624:ASN:HA	2:A:1:LDR:CAD	2.14	0.78
1:D:1681:ASN:O	1:D:1683:GLN:N	2.30	0.65
1:A:1618:ARG:HG3	1:A:1707:ASP:OD1	2.06	0.56
1:B:1558:THR:HG21	1:B:1637:ASN:HB3	1.89	0.55

All (1) symmetry-related close contacts are listed below. The label for Atom-2 includes the symmetry operator and encoded unit-cell translations to be applied.

Atom-1	Atom-2	Interatomic distance (Å)	Clash overlap (Å)
1:D:1628:TYR:OH	1:D:1628:TYR:OH[10_555]	2.08	0.12

5.3 Torsion angles [i](#)

5.3.1 Protein backbone [i](#)

In the following table, the Percentiles column shows the percent Ramachandran outliers of the chain as a percentile score with respect to all X-ray entries followed by that with respect to entries of similar resolution.

The Analysed column shows the number of residues for which the backbone conformation was analysed, and the total number of residues.

Mol	Chain	Analysed	Favoured	Allowed	Outliers	Percentiles	
1	A	182/193 (94%)	177 (97%)	5 (3%)	0	100	100
1	B	183/193 (95%)	180 (98%)	3 (2%)	0	100	100
1	C	187/193 (97%)	181 (97%)	6 (3%)	0	100	100
1	D	187/193 (97%)	180 (96%)	5 (3%)	2 (1%)	14	15
All	All	739/772 (96%)	718 (97%)	19 (3%)	2 (0%)	41	50

All (2) Ramachandran outliers are listed below:

Mol	Chain	Res	Type
1	D	1682	PRO
1	D	1681	ASN

5.3.2 Protein sidechains [i](#)

In the following table, the Percentiles column shows the percent sidechain outliers of the chain as a percentile score with respect to all X-ray entries followed by that with respect to entries of similar resolution.

The Analysed column shows the number of residues for which the sidechain conformation was analysed, and the total number of residues.

Mol	Chain	Analysed	Rotameric	Outliers	Percentiles	
1	A	162/170 (95%)	159 (98%)	3 (2%)	57	73
1	B	161/170 (95%)	158 (98%)	3 (2%)	57	73
1	C	165/170 (97%)	160 (97%)	5 (3%)	41	57
1	D	163/170 (96%)	163 (100%)	0	100	100
All	All	651/680 (96%)	640 (98%)	11 (2%)	60	76

5 of 11 residues with a non-rotameric sidechain are listed below:

Mol	Chain	Res	Type
1	C	1592	GLN
1	C	1648	ARG
1	C	1719	ARG
1	C	1679	SER
1	B	1582	LYS

Sometimes sidechains can be flipped to improve hydrogen bonding and reduce clashes. All (1) such sidechains are listed below:

Mol	Chain	Res	Type
1	C	1669	HIS

5.3.3 RNA [i](#)

There are no RNA molecules in this entry.

5.4 Non-standard residues in protein, DNA, RNA chains [i](#)

There are no non-standard protein/DNA/RNA residues in this entry.

5.5 Carbohydrates [i](#)

There are no monosaccharides in this entry.

5.6 Ligand geometry [i](#)

Of 13 ligands modelled in this entry, 2 are monoatomic - leaving 11 for Mogul analysis.

In the following table, the Counts columns list the number of bonds (or angles) for which Mogul statistics could be retrieved, the number of bonds (or angles) that are observed in the model and the number of bonds (or angles) that are defined in the Chemical Component Dictionary. The Link column lists molecule types, if any, to which the group is linked. The Z score for a bond length (or angle) is the number of standard deviations the observed value is removed from the expected value. A bond length (or angle) with $|Z| > 2$ is considered an outlier worth inspection. RMSZ is the root-mean-square of all Z scores of the bond lengths (or angles).

Mol	Type	Chain	Res	Link	Bond lengths			Bond angles		
					Counts	RMSZ	$\# Z > 2$	Counts	RMSZ	$\# Z > 2$
4	SCN	B	5	-	1,2,2	1.03	0	0,1,1	-	-
5	3AB	D	3	-	10,10,10	0.67	0	13,13,13	0.74	0
3	GOL	A	3	-	5,5,5	0.37	0	5,5,5	0.40	0
4	SCN	D	6	-	1,2,2	0.70	0	0,1,1	-	-

Mol	Type	Chain	Res	Link	Bond lengths			Bond angles		
					Counts	RMSZ	# Z > 2	Counts	RMSZ	# Z > 2
3	GOL	A	1721	-	5,5,5	0.57	0	5,5,5	0.77	0
4	SCN	C	7	-	1,2,2	0.70	0	0,1,1	-	-
3	GOL	D	4	-	5,5,5	0.43	0	5,5,5	0.47	0
2	LDR	A	1	-	17,17,17	1.77	4 (23%)	22,24,24	1.00	1 (4%)
2	LDR	B	2	-	17,17,17	1.48	3 (17%)	22,24,24	0.84	1 (4%)
5	3AB	C	4	-	10,10,10	0.79	0	13,13,13	0.81	0
3	GOL	C	1721	-	5,5,5	0.35	0	5,5,5	0.24	0

In the following table, the Chirals column lists the number of chiral outliers, the number of chiral centers analysed, the number of these observed in the model and the number defined in the Chemical Component Dictionary. Similar counts are reported in the Torsion and Rings columns. '-' means no outliers of that kind were identified.

Mol	Type	Chain	Res	Link	Chirals	Torsions	Rings
5	3AB	D	3	-	-	0/4/4/4	0/1/1/1
3	GOL	A	3	-	-	4/4/4/4	-
3	GOL	A	1721	-	-	2/4/4/4	-
3	GOL	D	4	-	-	2/4/4/4	-
2	LDR	A	1	-	-	-	0/3/3/3
2	LDR	B	2	-	-	-	0/3/3/3
5	3AB	C	4	-	-	0/4/4/4	0/1/1/1
3	GOL	C	1721	-	-	4/4/4/4	-

The worst 5 of 7 bond length outliers are listed below:

Mol	Chain	Res	Type	Atoms	Z	Observed(Å)	Ideal(Å)
2	B	2	LDR	CAM-CAK	-4.50	1.39	1.47
2	A	1	LDR	CAM-CAK	-4.24	1.40	1.47
2	A	1	LDR	CAL-NAJ	-3.67	1.33	1.39
2	A	1	LDR	CAO-CAN	-3.65	1.41	1.47
2	B	2	LDR	CAO-CAN	-2.72	1.42	1.47

All (2) bond angle outliers are listed below:

Mol	Chain	Res	Type	Atoms	Z	Observed(°)	Ideal(°)
2	A	1	LDR	OAA-CAK-NAJ	-3.19	116.75	120.95
2	B	2	LDR	CAL-NAJ-CAK	-2.22	122.00	124.80

There are no chirality outliers.

5 of 12 torsion outliers are listed below:

Mol	Chain	Res	Type	Atoms
3	A	1721	GOL	O1-C1-C2-O2
3	A	1721	GOL	O1-C1-C2-C3
3	A	3	GOL	O1-C1-C2-C3
3	C	1721	GOL	O1-C1-C2-C3
3	C	1721	GOL	O1-C1-C2-O2

There are no ring outliers.

4 monomers are involved in 6 short contacts:

Mol	Chain	Res	Type	Clashes	Symm-Clashes
3	A	1721	GOL	2	0
3	D	4	GOL	1	0
2	A	1	LDR	2	0
2	B	2	LDR	1	0

5.7 Other polymers [i](#)

There are no such residues in this entry.

5.8 Polymer linkage issues [i](#)

There are no chain breaks in this entry.

6 Fit of model and data [i](#)

6.1 Protein, DNA and RNA chains [i](#)

In the following table, the column labelled ‘#RSRZ> 2’ contains the number (and percentage) of RSRZ outliers, followed by percent RSRZ outliers for the chain as percentile scores relative to all X-ray entries and entries of similar resolution. The OWAB column contains the minimum, median, 95th percentile and maximum values of the occupancy-weighted average B-factor per residue. The column labelled ‘Q< 0.9’ lists the number of (and percentage) of residues with an average occupancy less than 0.9.

Mol	Chain	Analysed	<RSRZ>	#RSRZ>2	OWAB(Å ²)	Q<0.9
1	A	186/193 (96%)	-0.21	4 (2%) 62 69	14, 20, 32, 43	0
1	B	187/193 (96%)	-0.22	2 (1%) 80 85	14, 20, 32, 45	0
1	C	189/193 (97%)	-0.04	9 (4%) 30 37	13, 20, 32, 47	0
1	D	189/193 (97%)	-0.07	8 (4%) 36 43	13, 20, 32, 47	0
All	All	751/772 (97%)	-0.13	23 (3%) 49 56	13, 20, 33, 47	0

The worst 5 of 23 RSRZ outliers are listed below:

Mol	Chain	Res	Type	RSRZ
1	D	1685	PRO	5.2
1	C	1682	PRO	4.6
1	C	1683	GLN	3.8
1	A	1592	GLN	3.7
1	D	1681	ASN	3.6

6.2 Non-standard residues in protein, DNA, RNA chains [i](#)

There are no non-standard protein/DNA/RNA residues in this entry.

6.3 Carbohydrates [i](#)

There are no monosaccharides in this entry.

6.4 Ligands [i](#)

In the following table, the Atoms column lists the number of modelled atoms in the group and the number defined in the chemical component dictionary. The B-factors column lists the minimum, median, 95th percentile and maximum values of B factors of atoms in the group. The column labelled ‘Q< 0.9’ lists the number of atoms with occupancy less than 0.9.

Mol	Type	Chain	Res	Atoms	RSCC	RSR	B-factors(\AA^2)	Q<0.9
4	SCN	B	5	3/3	0.74	0.23	51,51,52,53	0
3	GOL	A	3	6/6	0.76	0.16	39,41,42,42	0
3	GOL	C	1721	6/6	0.86	0.12	32,33,33,33	0
3	GOL	D	4	6/6	0.87	0.17	42,44,44,45	0
4	SCN	C	7	3/3	0.87	0.17	26,26,27,28	0
3	GOL	A	1721	6/6	0.89	0.18	31,32,33,34	0
2	LDR	A	1	15/15	0.90	0.17	24,28,30,30	0
2	LDR	B	2	15/15	0.91	0.15	17,24,30,30	0
4	SCN	D	6	3/3	0.91	0.13	24,24,25,27	0
5	3AB	C	4	10/10	0.96	0.14	14,16,18,19	0
5	3AB	D	3	10/10	0.97	0.14	18,21,22,22	0
6	CL	C	2	1/1	0.98	0.10	19,19,19,19	0
6	CL	D	1	1/1	0.98	0.14	19,19,19,19	0

6.5 Other polymers [i](#)

There are no such residues in this entry.