



Full wwPDB X-ray Structure Validation Report

Aug 8, 2020 – 09:37 PM BST

PDB ID : 6S73
Title : Crystal structure of Nek7 SRS mutant bound to compound 51
Authors : Nasir, N.; Byrne, M.J.; Bhatia, C.; Bayliss, R.
Deposited on : 2019-07-04
Resolution : 3.50 Å(reported)

This is a Full wwPDB X-ray Structure Validation Report for a publicly released PDB entry.

We welcome your comments at validation@mail.wwpdb.org

A user guide is available at

<https://www.wwpdb.org/validation/2017/XrayValidationReportHelp>

with specific help available everywhere you see the  symbol.

The following versions of software and data (see [references](#) ) were used in the production of this report:

MolProbity : 4.02b-467
Mogul : 1.8.5 (274361), CSD as541be (2020)
Xtriage (Phenix) : 1.13
EDS : 2.13.1
buster-report : 1.1.7 (2018)
Percentile statistics : 20191225.v01 (using entries in the PDB archive December 25th 2019)
Refmac : 5.8.0158
CCP4 : 7.0.044 (Gargrove)
Ideal geometry (proteins) : Engh & Huber (2001)
Ideal geometry (DNA, RNA) : Parkinson et al. (1996)
Validation Pipeline (wwPDB-VP) : 2.13.1

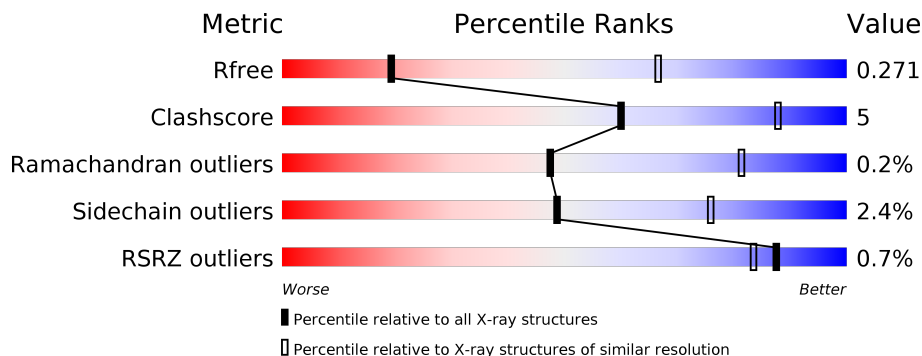
1 Overall quality at a glance

The following experimental techniques were used to determine the structure:

X-RAY DIFFRACTION

The reported resolution of this entry is 3.50 Å.

Percentile scores (ranging between 0-100) for global validation metrics of the entry are shown in the following graphic. The table shows the number of entries on which the scores are based.



Metric	Whole archive (#Entries)	Similar resolution (#Entries, resolution range(Å))
R_{free}	130704	1659 (3.60-3.40)
Clashscore	141614	1036 (3.58-3.42)
Ramachandran outliers	138981	1005 (3.58-3.42)
Sidechain outliers	138945	1006 (3.58-3.42)
RSRZ outliers	127900	1559 (3.60-3.40)

The table below summarises the geometric issues observed across the polymeric chains and their fit to the electron density. The red, orange, yellow and green segments on the lower bar indicate the fraction of residues that contain outliers for ≥ 3 , 2, 1 and 0 types of geometric quality criteria respectively. A grey segment represents the fraction of residues that are not modelled. The numeric value for each fraction is indicated below the corresponding segment, with a dot representing fractions $\leq 5\%$. The upper red bar (where present) indicates the fraction of residues that have poor fit to the electron density. The numeric value is given above the bar.

Mol	Chain	Length	Quality of chain
1	A	310	80% 7% 13%
1	B	310	78% 8% 14%
1	C	310	75% 8% 16%
1	D	310	71% 12% 16%

2 Entry composition i

There are 2 unique types of molecules in this entry. The entry contains 14083 atoms, of which 6431 are hydrogens and 0 are deuteriums.

In the tables below, the ZeroOcc column contains the number of atoms modelled with zero occupancy, the AltConf column contains the number of residues with at least one atom in alternate conformation and the Trace column contains the number of residues modelled with at most 2 atoms.

- Molecule 1 is a protein called Serine/threonine-protein kinase Nek7.

Mol	Chain	Residues	Atoms						ZeroOcc	AltConf	Trace
			Total	C	H	N	O	S			
1	A	269	3670	1268	1687	344	356	15	0	0	0
1	B	268	3671	1253	1722	335	347	14	0	0	0
1	C	259	3502	1199	1625	325	338	15	0	0	0
1	D	259	3039	1098	1298	299	332	12	0	0	0

There are 44 discrepancies between the modelled and reference sequences:

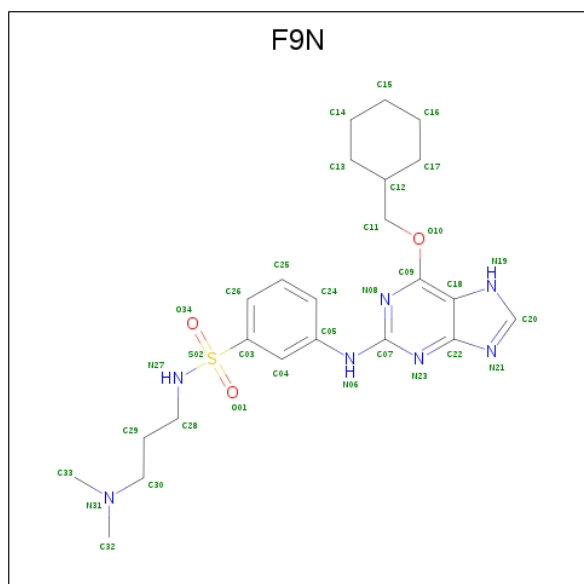
Chain	Residue	Modelled	Actual	Comment	Reference
A	86	HIS	LEU	engineered mutation	UNP Q8TDX7
A	97	PHE	TYR	engineered mutation	UNP Q8TDX7
A	180	PHE	LEU	engineered mutation	UNP Q8TDX7
A	303	LEU	-	expression tag	UNP Q8TDX7
A	304	GLU	-	expression tag	UNP Q8TDX7
A	305	HIS	-	expression tag	UNP Q8TDX7
A	306	HIS	-	expression tag	UNP Q8TDX7
A	307	HIS	-	expression tag	UNP Q8TDX7
A	308	HIS	-	expression tag	UNP Q8TDX7
A	309	HIS	-	expression tag	UNP Q8TDX7
A	310	HIS	-	expression tag	UNP Q8TDX7
B	86	HIS	LEU	engineered mutation	UNP Q8TDX7
B	97	PHE	TYR	engineered mutation	UNP Q8TDX7
B	180	PHE	LEU	engineered mutation	UNP Q8TDX7
B	303	LEU	-	expression tag	UNP Q8TDX7
B	304	GLU	-	expression tag	UNP Q8TDX7
B	305	HIS	-	expression tag	UNP Q8TDX7
B	306	HIS	-	expression tag	UNP Q8TDX7
B	307	HIS	-	expression tag	UNP Q8TDX7
B	308	HIS	-	expression tag	UNP Q8TDX7
B	309	HIS	-	expression tag	UNP Q8TDX7

Continued on next page...

Continued from previous page...

Chain	Residue	Modelled	Actual	Comment	Reference
B	310	HIS	-	expression tag	UNP Q8TDX7
C	86	HIS	LEU	engineered mutation	UNP Q8TDX7
C	97	PHE	TYR	engineered mutation	UNP Q8TDX7
C	180	PHE	LEU	engineered mutation	UNP Q8TDX7
C	303	LEU	-	expression tag	UNP Q8TDX7
C	304	GLU	-	expression tag	UNP Q8TDX7
C	305	HIS	-	expression tag	UNP Q8TDX7
C	306	HIS	-	expression tag	UNP Q8TDX7
C	307	HIS	-	expression tag	UNP Q8TDX7
C	308	HIS	-	expression tag	UNP Q8TDX7
C	309	HIS	-	expression tag	UNP Q8TDX7
C	310	HIS	-	expression tag	UNP Q8TDX7
D	86	HIS	LEU	engineered mutation	UNP Q8TDX7
D	97	PHE	TYR	engineered mutation	UNP Q8TDX7
D	180	PHE	LEU	engineered mutation	UNP Q8TDX7
D	303	LEU	-	expression tag	UNP Q8TDX7
D	304	GLU	-	expression tag	UNP Q8TDX7
D	305	HIS	-	expression tag	UNP Q8TDX7
D	306	HIS	-	expression tag	UNP Q8TDX7
D	307	HIS	-	expression tag	UNP Q8TDX7
D	308	HIS	-	expression tag	UNP Q8TDX7
D	309	HIS	-	expression tag	UNP Q8TDX7
D	310	HIS	-	expression tag	UNP Q8TDX7

- Molecule 2 is 3-[[6-(cyclohexylmethoxy)-7 {H}-purin-2-yl]amino]- {N}-[3-(dimethylamino)propyl]benzenesulfonamide (three-letter code: F9N) (formula: C₂₃H₃₃N₇O₃S) (labeled as "Ligand of Interest" by author).



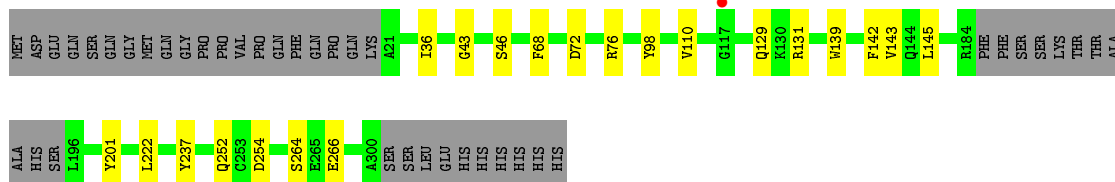
Mol	Chain	Residues	Atoms					ZeroOcc	AltConf	
2	A	1	Total 67	C 23	H 33	N 7	O 3	S 1	0	0
2	B	1	Total 67	C 23	H 33	N 7	O 3	S 1	0	0
2	C	1	Total 67	C 23	H 33	N 7	O 3	S 1	0	0

3 Residue-property plots

These plots are drawn for all protein, RNA, DNA and oligosaccharide chains in the entry. The first graphic for a chain summarises the proportions of the various outlier classes displayed in the second graphic. The second graphic shows the sequence view annotated by issues in geometry and electron density. Residues are color-coded according to the number of geometric quality criteria for which they contain at least one outlier: green = 0, yellow = 1, orange = 2 and red = 3 or more. A red dot above a residue indicates a poor fit to the electron density ($RSRZ > 2$). Stretches of 2 or more consecutive residues without any outlier are shown as a green connector. Residues present in the sample, but not in the model, are shown in grey.

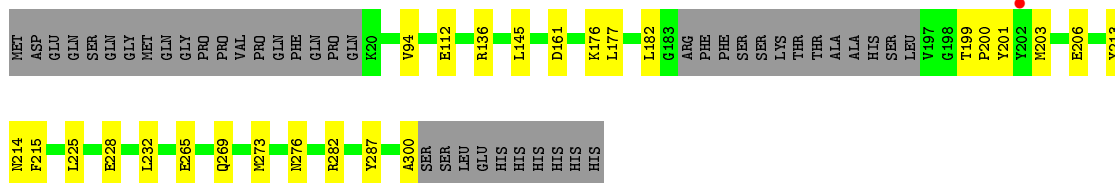
- Molecule 1: Serine/threonine-protein kinase Nek7

Chain A: 



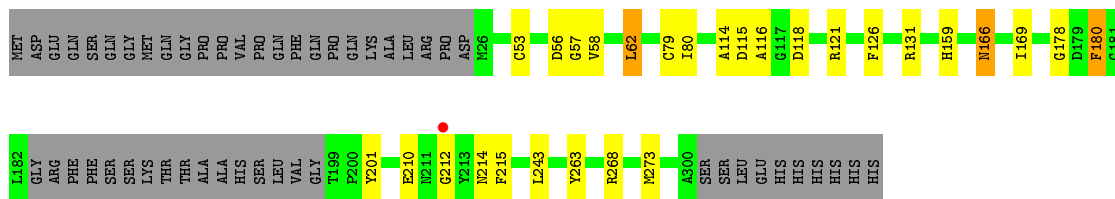
- Molecule 1: Serine/threonine-protein kinase Nek7

Chain B: 



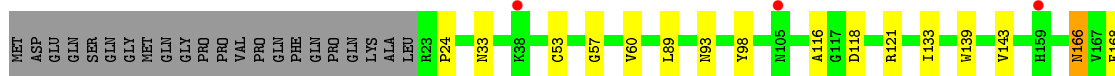
- Molecule 1: Serine/threonine-protein kinase Nek7

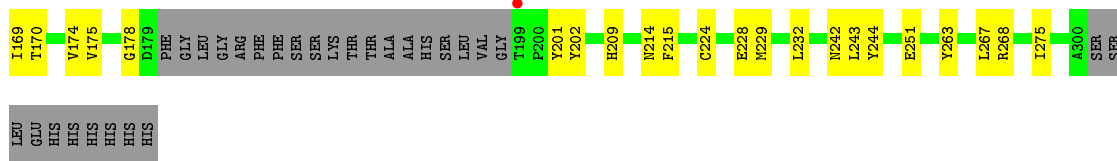
Chain C: 



- Molecule 1: Serine/threonine-protein kinase Nek7

Chain D: 





4 Data and refinement statistics

Property	Value	Source
Space group	P 1 21 1	Depositor
Cell constants a, b, c, α , β , γ	49.42Å 169.08Å 83.73Å 90.00° 92.81° 90.00°	Depositor
Resolution (Å)	83.63 – 3.50 83.63 – 3.50	Depositor EDS
% Data completeness (in resolution range)	99.1 (83.63-3.50) 99.2 (83.63-3.50)	Depositor EDS
R_{merge}	0.18	Depositor
R_{sym}	(Not available)	Depositor
$\langle I/\sigma(I) \rangle$ ¹	1.92 (at 3.49Å)	Xtrriage
Refinement program	PHENIX 1.14_3260	Depositor
R, R_{free}	0.235 , 0.271 0.235 , 0.271	Depositor DCC
R_{free} test set	816 reflections (4.75%)	wwPDB-VP
Wilson B-factor (Å ²)	79.4	Xtrriage
Anisotropy	0.022	Xtrriage
Bulk solvent k_{sol} (e/Å ³), B_{sol} (Å ²)	0.36 , 83.8	EDS
L-test for twinning ²	$\langle L \rangle = 0.47$, $\langle L^2 \rangle = 0.29$	Xtrriage
Estimated twinning fraction	0.057 for h,-k,-l	Xtrriage
F_o, F_c correlation	0.87	EDS
Total number of atoms	14083	wwPDB-VP
Average B, all atoms (Å ²)	76.0	wwPDB-VP

Xtrriage's analysis on translational NCS is as follows: *The largest off-origin peak in the Patterson function is 3.92% of the height of the origin peak. No significant pseudotranslation is detected.*

¹ Intensities estimated from amplitudes.

² Theoretical values of $\langle |L| \rangle$, $\langle L^2 \rangle$ for acentric reflections are 0.5, 0.333 respectively for untwinned datasets, and 0.375, 0.2 for perfectly twinned datasets.

5 Model quality [i](#)

5.1 Standard geometry [i](#)

Bond lengths and bond angles in the following residue types are not validated in this section: F9N

The Z score for a bond length (or angle) is the number of standard deviations the observed value is removed from the expected value. A bond length (or angle) with $|Z| > 5$ is considered an outlier worth inspection. RMSZ is the root-mean-square of all Z scores of the bond lengths (or angles).

Mol	Chain	Bond lengths		Bond angles	
		RMSZ	# Z >5	RMSZ	# Z >5
1	A	0.25	0/2030	0.40	0/2768
1	B	0.24	0/1997	0.40	0/2726
1	C	0.24	0/1920	0.40	0/2623
1	D	0.24	0/1780	0.39	0/2450
All	All	0.24	0/7727	0.40	0/10567

There are no bond length outliers.

There are no bond angle outliers.

There are no chirality outliers.

There are no planarity outliers.

5.2 Too-close contacts [i](#)

In the following table, the Non-H and H(model) columns list the number of non-hydrogen atoms and hydrogen atoms in the chain respectively. The H(added) column lists the number of hydrogen atoms added and optimized by MolProbity. The Clashes column lists the number of clashes within the asymmetric unit, whereas Symm-Clashes lists symmetry related clashes.

Mol	Chain	Non-H	H(model)	H(added)	Clashes	Symm-Clashes
1	A	1983	1687	1796	13	0
1	B	1949	1722	1758	13	0
1	C	1877	1625	1695	15	0
1	D	1741	1298	1392	25	0
2	A	34	33	0	0	0
2	B	34	33	0	0	0
2	C	34	33	0	1	0
All	All	7652	6431	6641	66	0

The all-atom clashscore is defined as the number of clashes found per 1000 atoms (including

hydrogen atoms). The all-atom clashscore for this structure is 5.

All (66) close contacts within the same asymmetric unit are listed below, sorted by their clash magnitude.

Atom-1	Atom-2	Interatomic distance (Å)	Clash overlap (Å)
1:D:202:TYR:OH	1:D:228:GLU:OE1	2.01	0.78
1:C:56:ASP:OD1	1:C:58:VAL:HG12	1.94	0.68
1:D:93:ASN:ND2	1:D:175:VAL:O	2.27	0.67
1:B:112:GLU:OE2	1:B:176:LYS:NZ	2.25	0.67
1:C:114:ALA:O	2:C:401:F9N:N06	2.31	0.64
1:C:263:TYR:O	1:C:268:ARG:NH1	2.31	0.64
1:D:166:ASN:O	1:D:166:ASN:ND2	2.30	0.64
1:A:129:GLN:OE1	1:A:131:ARG:NH1	2.33	0.62
1:B:136:ARG:NH2	1:B:300:ALA:O	2.34	0.61
1:A:264:SER:OG	1:A:266:GLU:OE1	2.19	0.60
1:D:166:ASN:ND2	1:D:178:GLY:O	2.32	0.60
1:A:266:GLU:OE1	1:A:266:GLU:N	2.35	0.57
1:C:62:LEU:HD12	1:C:62:LEU:O	2.04	0.57
1:D:24:PRO:HB3	1:D:33:ASN:CB	2.35	0.57
1:C:210:GLU:OE2	1:C:212:GLY:N	2.39	0.56
1:D:89:LEU:O	1:D:89:LEU:HD12	2.06	0.56
1:D:242:ASN:O	1:D:244:TYR:N	2.39	0.55
1:D:116:ALA:HB3	1:D:169:ILE:O	2.07	0.55
1:A:68:PHE:O	1:A:76:ARG:NH2	2.41	0.54
1:B:206:GLU:OE2	1:B:282:ARG:NH2	2.40	0.53
1:B:199:THR:HB	1:B:200:PRO:HD2	1.91	0.53
1:D:133:ILE:HD12	1:D:229:MET:O	2.09	0.53
1:A:72:ASP:O	1:A:76:ARG:HG3	2.10	0.52
1:D:60:VAL:HG12	1:D:98:TYR:CE2	2.44	0.52
1:B:214:ASN:OD1	1:B:215:PHE:N	2.42	0.52
1:D:169:ILE:HG22	1:D:170:THR:H	1.75	0.51
1:D:228:GLU:O	1:D:232:LEU:N	2.44	0.50
1:A:145:LEU:HD11	1:A:222:LEU:CD1	2.42	0.50
1:B:199:THR:OG1	1:B:203:MET:SD	2.68	0.50
1:B:228:GLU:O	1:B:232:LEU:N	2.41	0.50
1:D:169:ILE:HG22	1:D:170:THR:N	2.26	0.50
1:A:43:GLY:N	1:A:46:SER:O	2.40	0.49
1:D:263:TYR:O	1:D:268:ARG:NH1	2.45	0.49
1:C:53:CYS:O	1:C:57:GLY:N	2.43	0.48
1:D:214:ASN:OD1	1:D:215:PHE:N	2.42	0.48
1:D:24:PRO:HG3	1:D:33:ASN:HA	1.96	0.48
1:B:276:ASN:O	1:B:282:ARG:NH1	2.48	0.47
1:B:265:GLU:OE2	1:B:269:GLN:NE2	2.40	0.47

Continued on next page...

Continued from previous page...

Atom-1	Atom-2	Interatomic distance (Å)	Clash overlap (Å)
1:A:98:TYR:HB2	1:A:110:VAL:HG23	1.97	0.47
1:A:36:ILE:HD12	1:A:36:ILE:O	2.15	0.47
1:C:243:LEU:O	1:C:243:LEU:HD23	2.15	0.47
1:D:267:LEU:HD23	1:D:267:LEU:C	2.36	0.47
1:B:145:LEU:HD21	1:B:225:LEU:HD23	1.98	0.46
1:B:94:VAL:HG13	1:B:177:LEU:O	2.16	0.46
1:C:118:ASP:OD1	1:C:118:ASP:N	2.49	0.46
1:D:166:ASN:HD21	1:D:178:GLY:C	2.19	0.46
1:D:139:TRP:O	1:D:143:VAL:HG12	2.16	0.46
1:D:169:ILE:HD12	1:D:169:ILE:N	2.31	0.45
1:B:273:MET:HE1	1:B:287:TYR:HE2	1.80	0.45
1:C:116:ALA:HB3	1:C:169:ILE:O	2.18	0.44
1:C:214:ASN:OD1	1:C:215:PHE:N	2.49	0.44
1:C:79:CYS:SG	1:C:80:ILE:N	2.91	0.43
1:D:118:ASP:O	1:D:121:ARG:N	2.51	0.43
1:D:209:HIS:NE2	1:D:251:GLU:OE2	2.49	0.43
1:C:126:PHE:HB3	1:C:131:ARG:O	2.19	0.43
1:A:142:PHE:CE1	1:A:222:LEU:HD11	2.54	0.42
1:B:200:PRO:O	1:B:203:MET:HE2	2.19	0.42
1:A:252:GLN:O	1:A:254:ASP:N	2.52	0.42
1:D:224:CYS:N	1:D:275:ILE:HD11	2.34	0.42
1:C:166:ASN:ND2	1:C:166:ASN:O	2.44	0.41
1:D:169:ILE:HG23	1:D:174:VAL:C	2.41	0.41
1:D:53:CYS:O	1:D:57:GLY:N	2.51	0.41
1:C:159:HIS:HA	1:C:180:PHE:CE2	2.56	0.40
1:A:139:TRP:O	1:A:143:VAL:HG12	2.20	0.40
1:A:145:LEU:HD11	1:A:222:LEU:HD11	2.02	0.40
1:C:159:HIS:O	1:C:180:PHE:CD2	2.75	0.40

There are no symmetry-related clashes.

5.3 Torsion angles [i](#)

5.3.1 Protein backbone [i](#)

In the following table, the Percentiles column shows the percent Ramachandran outliers of the chain as a percentile score with respect to all X-ray entries followed by that with respect to entries of similar resolution.

The Analysed column shows the number of residues for which the backbone conformation was analysed, and the total number of residues.

Mol	Chain	Analysed	Favoured	Allowed	Outliers	Percentiles	
1	A	265/310 (86%)	254 (96%)	11 (4%)	0	100	100
1	B	264/310 (85%)	249 (94%)	15 (6%)	0	100	100
1	C	255/310 (82%)	244 (96%)	10 (4%)	1 (0%)	34	72
1	D	255/310 (82%)	245 (96%)	9 (4%)	1 (0%)	34	72
All	All	1039/1240 (84%)	992 (96%)	45 (4%)	2 (0%)	47	81

All (2) Ramachandran outliers are listed below:

Mol	Chain	Res	Type
1	D	243	LEU
1	C	178	GLY

5.3.2 Protein sidechains [i](#)

In the following table, the Percentiles column shows the percent sidechain outliers of the chain as a percentile score with respect to all X-ray entries followed by that with respect to entries of similar resolution.

The Analysed column shows the number of residues for which the sidechain conformation was analysed, and the total number of residues.

Mol	Chain	Analysed	Rotameric	Outliers	Percentiles	
1	A	183/274 (67%)	181 (99%)	2 (1%)	73	88
1	B	177/274 (65%)	173 (98%)	4 (2%)	50	77
1	C	174/274 (64%)	167 (96%)	7 (4%)	31	64
1	D	136/274 (50%)	133 (98%)	3 (2%)	52	78
All	All	670/1096 (61%)	654 (98%)	16 (2%)	49	76

All (16) residues with a non-rotameric sidechain are listed below:

Mol	Chain	Res	Type
1	A	201	TYR
1	A	237	TYR
1	B	161	ASP
1	B	182	LEU
1	B	201	TYR
1	B	213	TYR
1	C	62	LEU
1	C	115	ASP
1	C	121	ARG

Continued on next page...

Continued from previous page...

Mol	Chain	Res	Type
1	C	166	ASN
1	C	180	PHE
1	C	201	TYR
1	C	273	MET
1	D	166	ASN
1	D	168	PHE
1	D	201	TYR

Some sidechains can be flipped to improve hydrogen bonding and reduce clashes. All (1) such sidechains are listed below:

Mol	Chain	Res	Type
1	C	86	HIS

5.3.3 RNA [i](#)

There are no RNA molecules in this entry.

5.4 Non-standard residues in protein, DNA, RNA chains [i](#)

There are no non-standard protein/DNA/RNA residues in this entry.

5.5 Carbohydrates [i](#)

There are no monosaccharides in this entry.

5.6 Ligand geometry [i](#)

3 ligands are modelled in this entry.

In the following table, the Counts columns list the number of bonds (or angles) for which Mogul statistics could be retrieved, the number of bonds (or angles) that are observed in the model and the number of bonds (or angles) that are defined in the Chemical Component Dictionary. The Link column lists molecule types, if any, to which the group is linked. The Z score for a bond length (or angle) is the number of standard deviations the observed value is removed from the expected value. A bond length (or angle) with $|Z| > 2$ is considered an outlier worth inspection. RMSZ is the root-mean-square of all Z scores of the bond lengths (or angles).

Mol	Type	Chain	Res	Link	Bond lengths			Bond angles		
					Counts	RMSZ	# Z > 2	Counts	RMSZ	# Z > 2
2	F9N	A	401	-	34,37,37	2.16	8 (23%)	42,51,51	2.91	11 (26%)

Mol	Type	Chain	Res	Link	Bond lengths			Bond angles		
					Counts	RMSZ	# Z > 2	Counts	RMSZ	# Z > 2
2	F9N	C	401	-	34,37,37	2.20	8 (23%)	42,51,51	2.96	11 (26%)
2	F9N	B	401	-	34,37,37	2.17	8 (23%)	42,51,51	3.05	13 (30%)

In the following table, the Chirals column lists the number of chiral outliers, the number of chiral centers analysed, the number of these observed in the model and the number defined in the Chemical Component Dictionary. Similar counts are reported in the Torsion and Rings columns. '-' means no outliers of that kind were identified.

Mol	Type	Chain	Res	Link	Chirals	Torsions	Rings
2	F9N	A	401	-	-	15/23/31/31	0/4/4/4
2	F9N	C	401	-	-	9/23/31/31	0/4/4/4
2	F9N	B	401	-	-	16/23/31/31	0/4/4/4

All (24) bond length outliers are listed below:

Mol	Chain	Res	Type	Atoms	Z	Observed(Å)	Ideal(Å)
2	C	401	F9N	O10-C09	6.87	1.40	1.35
2	B	401	F9N	O10-C09	6.76	1.40	1.35
2	A	401	F9N	O10-C09	6.74	1.40	1.35
2	C	401	F9N	S02-N27	6.50	1.71	1.61
2	A	401	F9N	S02-N27	6.41	1.71	1.61
2	B	401	F9N	S02-N27	6.40	1.71	1.61
2	C	401	F9N	C07-N06	4.58	1.45	1.36
2	A	401	F9N	C07-N06	4.55	1.45	1.36
2	B	401	F9N	C07-N06	4.52	1.45	1.36
2	C	401	F9N	C03-S02	3.93	1.82	1.76
2	B	401	F9N	C03-S02	3.80	1.82	1.76
2	A	401	F9N	C03-S02	3.79	1.82	1.76
2	B	401	F9N	O01-S02	3.05	1.47	1.43
2	C	401	F9N	O01-S02	3.05	1.47	1.43
2	A	401	F9N	O34-S02	3.04	1.47	1.43
2	B	401	F9N	O34-S02	3.03	1.47	1.43
2	C	401	F9N	O34-S02	3.02	1.47	1.43
2	A	401	F9N	O01-S02	2.79	1.46	1.43
2	C	401	F9N	C18-C22	-2.69	1.33	1.40
2	B	401	F9N	C18-C22	-2.68	1.33	1.40
2	A	401	F9N	C18-C22	-2.62	1.34	1.40
2	A	401	F9N	C05-N06	2.31	1.45	1.40
2	C	401	F9N	C05-N06	2.23	1.45	1.40
2	B	401	F9N	C05-N06	2.23	1.45	1.40

All (35) bond angle outliers are listed below:

Mol	Chain	Res	Type	Atoms	Z	Observed(°)	Ideal(°)
2	C	401	F9N	O34-S02-O01	-15.03	101.07	119.55
2	A	401	F9N	O34-S02-O01	-14.82	101.33	119.55
2	B	401	F9N	O34-S02-O01	-14.67	101.52	119.55
2	B	401	F9N	O10-C09-N08	5.39	124.77	120.12
2	B	401	F9N	C11-O10-C09	-5.23	112.51	117.50
2	C	401	F9N	C07-N23-C22	4.91	120.85	115.28
2	C	401	F9N	O10-C09-N08	4.73	124.21	120.12
2	B	401	F9N	C07-N23-C22	4.51	120.40	115.28
2	A	401	F9N	C07-N23-C22	4.42	120.30	115.28
2	A	401	F9N	O10-C09-N08	4.33	123.87	120.12
2	C	401	F9N	N23-C07-N08	-4.14	119.69	126.23
2	A	401	F9N	N23-C07-N08	-4.09	119.76	126.23
2	B	401	F9N	N23-C07-N08	-4.00	119.90	126.23
2	A	401	F9N	C07-N08-C09	2.91	120.32	115.18
2	B	401	F9N	O34-S02-C03	2.91	111.55	107.97
2	A	401	F9N	O34-S02-N27	2.84	111.47	107.04
2	A	401	F9N	O01-S02-C03	2.82	111.44	107.97
2	B	401	F9N	O34-S02-N27	2.78	111.39	107.04
2	A	401	F9N	O34-S02-C03	2.72	111.32	107.97
2	B	401	F9N	O01-S02-C03	2.72	111.31	107.97
2	B	401	F9N	C07-N08-C09	2.72	119.97	115.18
2	B	401	F9N	O01-S02-N27	2.71	111.27	107.04
2	C	401	F9N	C07-N08-C09	2.66	119.87	115.18
2	C	401	F9N	C03-S02-N27	2.62	111.19	107.55
2	C	401	F9N	O34-S02-C03	2.56	111.12	107.97
2	C	401	F9N	O01-S02-N27	2.55	111.03	107.04
2	C	401	F9N	O34-S02-N27	2.55	111.02	107.04
2	A	401	F9N	O01-S02-N27	2.53	110.99	107.04
2	C	401	F9N	O01-S02-C03	2.48	111.02	107.97
2	B	401	F9N	C05-N06-C07	-2.44	122.17	129.23
2	A	401	F9N	C05-N06-C07	-2.40	122.26	129.23
2	B	401	F9N	C15-C16-C17	2.15	115.79	111.42
2	A	401	F9N	N06-C07-N23	2.11	124.09	116.92
2	B	401	F9N	N06-C07-N23	2.02	123.79	116.92
2	C	401	F9N	C11-O10-C09	-2.00	115.59	117.50

There are no chirality outliers.

All (40) torsion outliers are listed below:

Mol	Chain	Res	Type	Atoms
2	A	401	F9N	N27-C28-C29-C30

Continued on next page...

Continued from previous page...

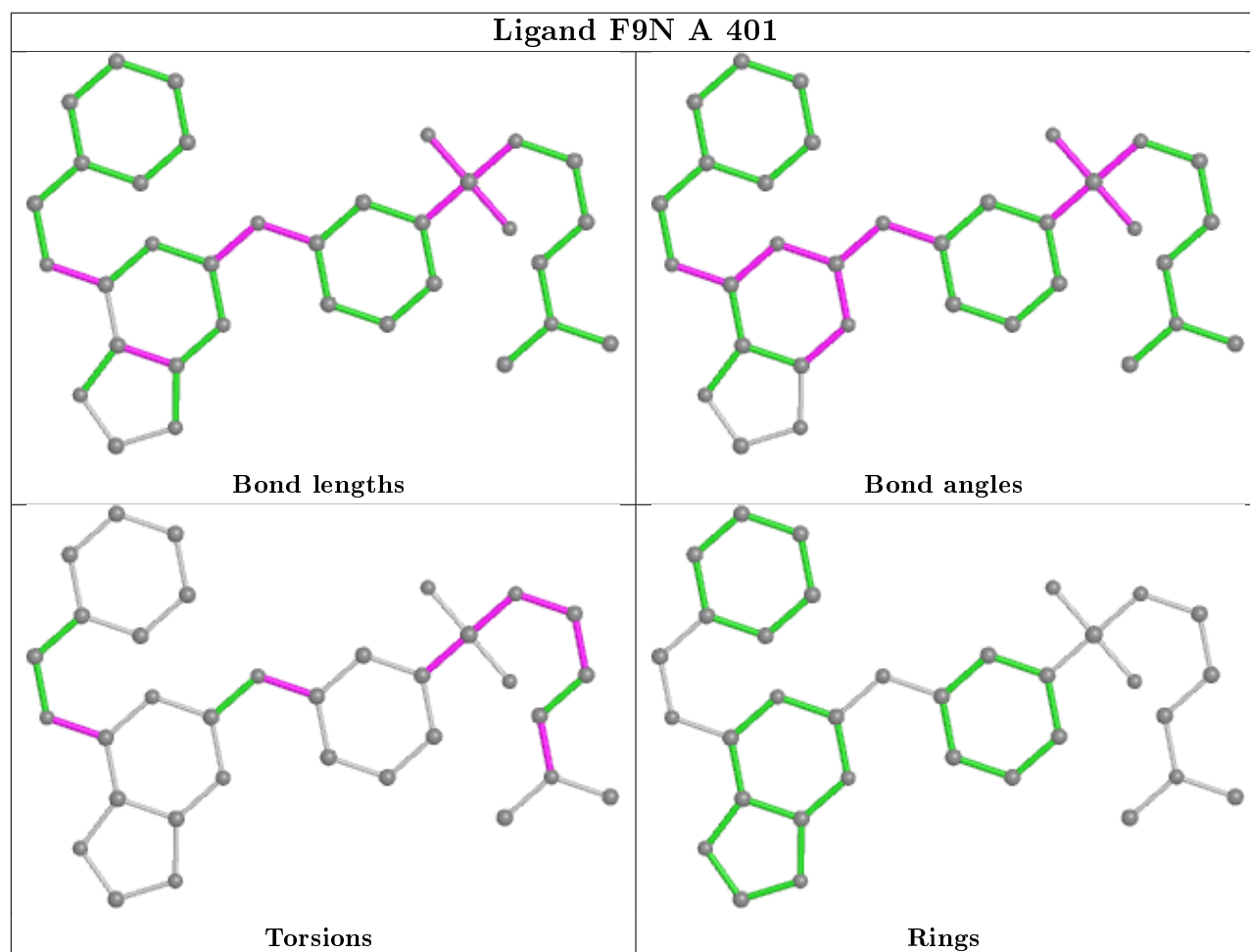
Mol	Chain	Res	Type	Atoms
2	A	401	F9N	N08-C09-O10-C11
2	A	401	F9N	C18-C09-O10-C11
2	C	401	F9N	N08-C09-O10-C11
2	C	401	F9N	C18-C09-O10-C11
2	C	401	F9N	O10-C11-C12-C17
2	B	401	F9N	N08-C09-O10-C11
2	B	401	F9N	C18-C09-O10-C11
2	B	401	F9N	O10-C11-C12-C13
2	B	401	F9N	O10-C11-C12-C17
2	A	401	F9N	C28-N27-S02-O34
2	C	401	F9N	C28-N27-S02-C03
2	B	401	F9N	C29-C30-N31-C32
2	B	401	F9N	C29-C30-N31-C33
2	B	401	F9N	C28-C29-C30-N31
2	B	401	F9N	C28-N27-S02-O34
2	C	401	F9N	O10-C11-C12-C13
2	A	401	F9N	C26-C03-S02-N27
2	A	401	F9N	C28-N27-S02-O01
2	B	401	F9N	C04-C03-S02-O01
2	B	401	F9N	C26-C03-S02-O01
2	C	401	F9N	C26-C03-S02-O34
2	A	401	F9N	C04-C03-S02-N27
2	C	401	F9N	C04-C03-S02-O34
2	A	401	F9N	C28-N27-S02-C03
2	B	401	F9N	N08-C07-N06-C05
2	B	401	F9N	N23-C07-N06-C05
2	A	401	F9N	C04-C03-S02-O01
2	B	401	F9N	C26-C03-S02-N27
2	C	401	F9N	C26-C03-S02-N27
2	A	401	F9N	C26-C03-S02-O01
2	C	401	F9N	C04-C03-S02-N27
2	B	401	F9N	C04-C03-S02-N27
2	B	401	F9N	C04-C05-N06-C07
2	B	401	F9N	C24-C05-N06-C07
2	A	401	F9N	C29-C30-N31-C32
2	A	401	F9N	C29-C28-N27-S02
2	A	401	F9N	C04-C05-N06-C07
2	A	401	F9N	C24-C05-N06-C07
2	A	401	F9N	C29-C30-N31-C33

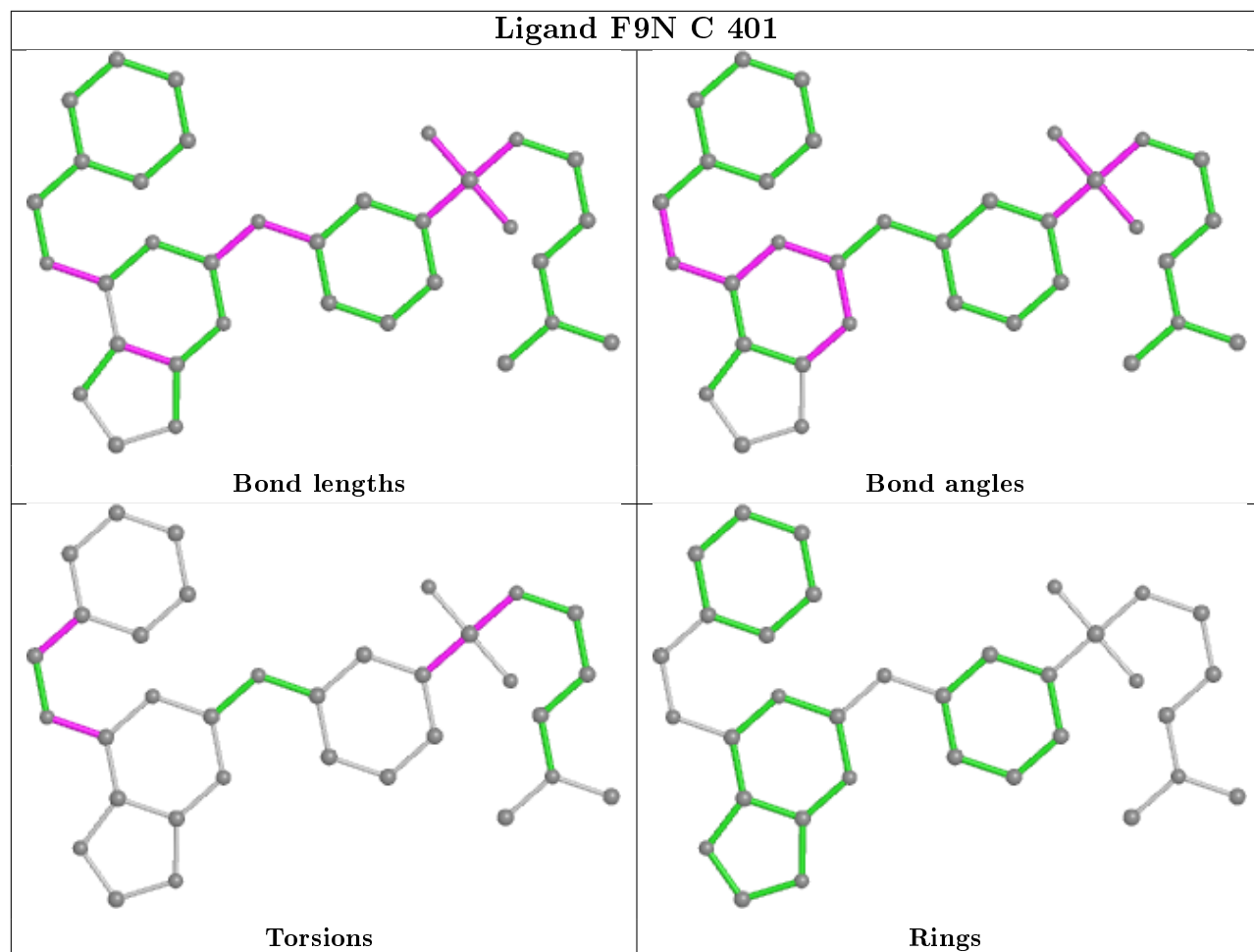
There are no ring outliers.

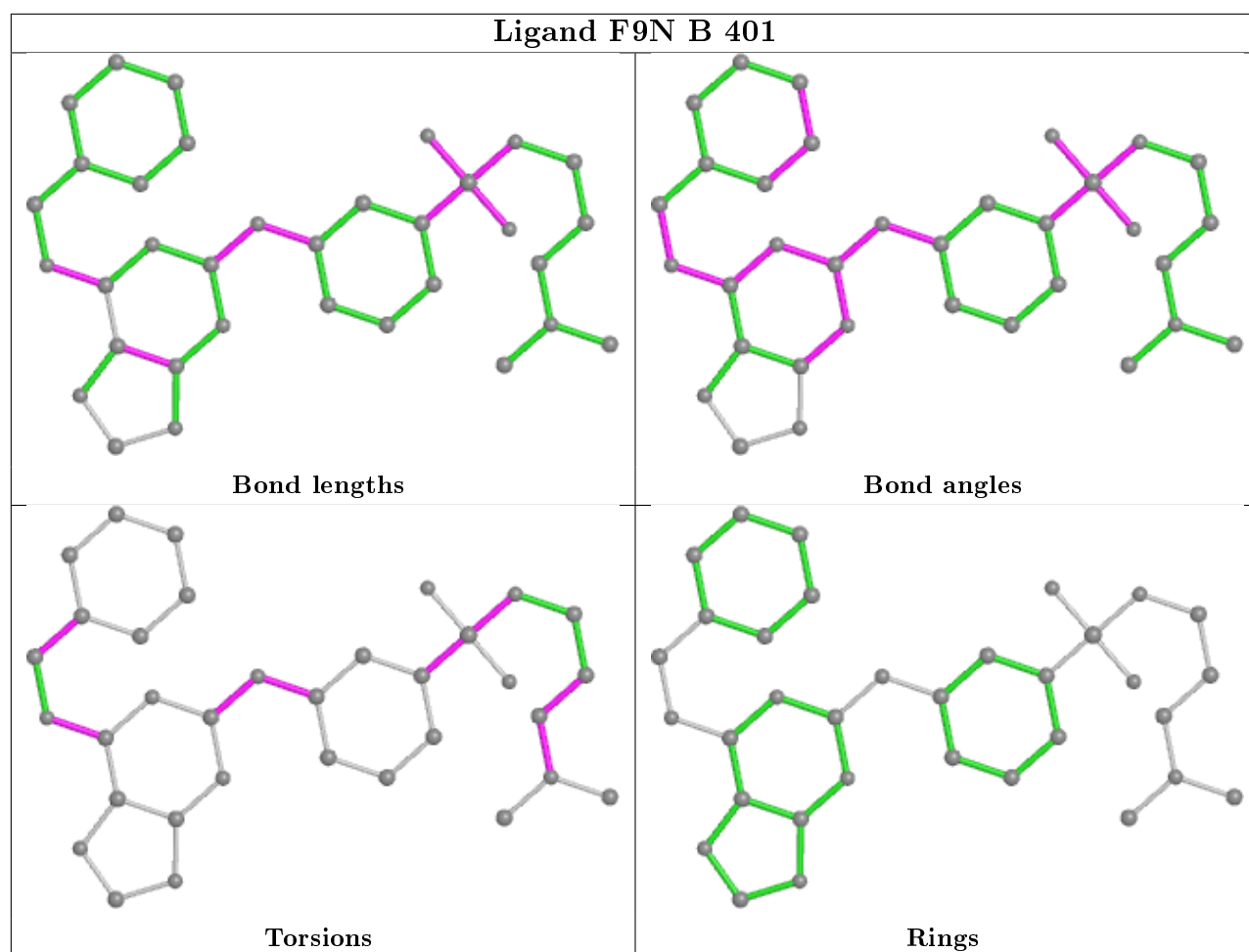
1 monomer is involved in 1 short contact:

Mol	Chain	Res	Type	Clashes	Symm-Clashes
2	C	401	F9N	1	0

The following is a two-dimensional graphical depiction of Mogul quality analysis of bond lengths, bond angles, torsion angles, and ring geometry for all instances of the Ligand of Interest. In addition, ligands with molecular weight > 250 and outliers as shown on the validation Tables will also be included. For torsion angles, if less than 5% of the Mogul distribution of torsion angles is within 10 degrees of the torsion angle in question, then that torsion angle is considered an outlier. Any bond that is central to one or more torsion angles identified as an outlier by Mogul will be highlighted in the graph. For rings, the root-mean-square deviation (RMSD) between the ring in question and similar rings identified by Mogul is calculated over all ring torsion angles. If the average RMSD is greater than 60 degrees and the minimal RMSD between the ring in question and any Mogul-identified rings is also greater than 60 degrees, then that ring is considered an outlier. The outliers are highlighted in purple. The color gray indicates Mogul did not find sufficient equivalents in the CSD to analyse the geometry.







5.7 Other polymers [i](#)

There are no such residues in this entry.

5.8 Polymer linkage issues [i](#)

There are no chain breaks in this entry.

6 Fit of model and data [i](#)

6.1 Protein, DNA and RNA chains [i](#)

In the following table, the column labelled ‘#RSRZ> 2’ contains the number (and percentage) of RSRZ outliers, followed by percent RSRZ outliers for the chain as percentile scores relative to all X-ray entries and entries of similar resolution. The OWAB column contains the minimum, median, 95th percentile and maximum values of the occupancy-weighted average B-factor per residue. The column labelled ‘Q< 0.9’ lists the number of (and percentage) of residues with an average occupancy less than 0.9.

Mol	Chain	Analysed	<RSRZ>	#RSRZ>2	OWAB(Å ²)	Q<0.9
1	A	269/310 (86%)	0.05	1 (0%) 92 90	30, 59, 103, 171	0
1	B	268/310 (86%)	-0.14	1 (0%) 92 90	33, 66, 114, 150	0
1	C	259/310 (83%)	-0.12	1 (0%) 92 90	36, 66, 102, 135	0
1	D	259/310 (83%)	-0.02	4 (1%) 73 68	54, 88, 127, 227	0
All	All	1055/1240 (85%)	-0.06	7 (0%) 87 83	30, 69, 115, 227	0

All (7) RSRZ outliers are listed below:

Mol	Chain	Res	Type	RSRZ
1	D	199	THR	2.9
1	C	212	GLY	2.6
1	D	38	LYS	2.6
1	B	202	TYR	2.5
1	D	159	HIS	2.3
1	A	117	GLY	2.2
1	D	105	ASN	2.1

6.2 Non-standard residues in protein, DNA, RNA chains [i](#)

There are no non-standard protein/DNA/RNA residues in this entry.

6.3 Carbohydrates [i](#)

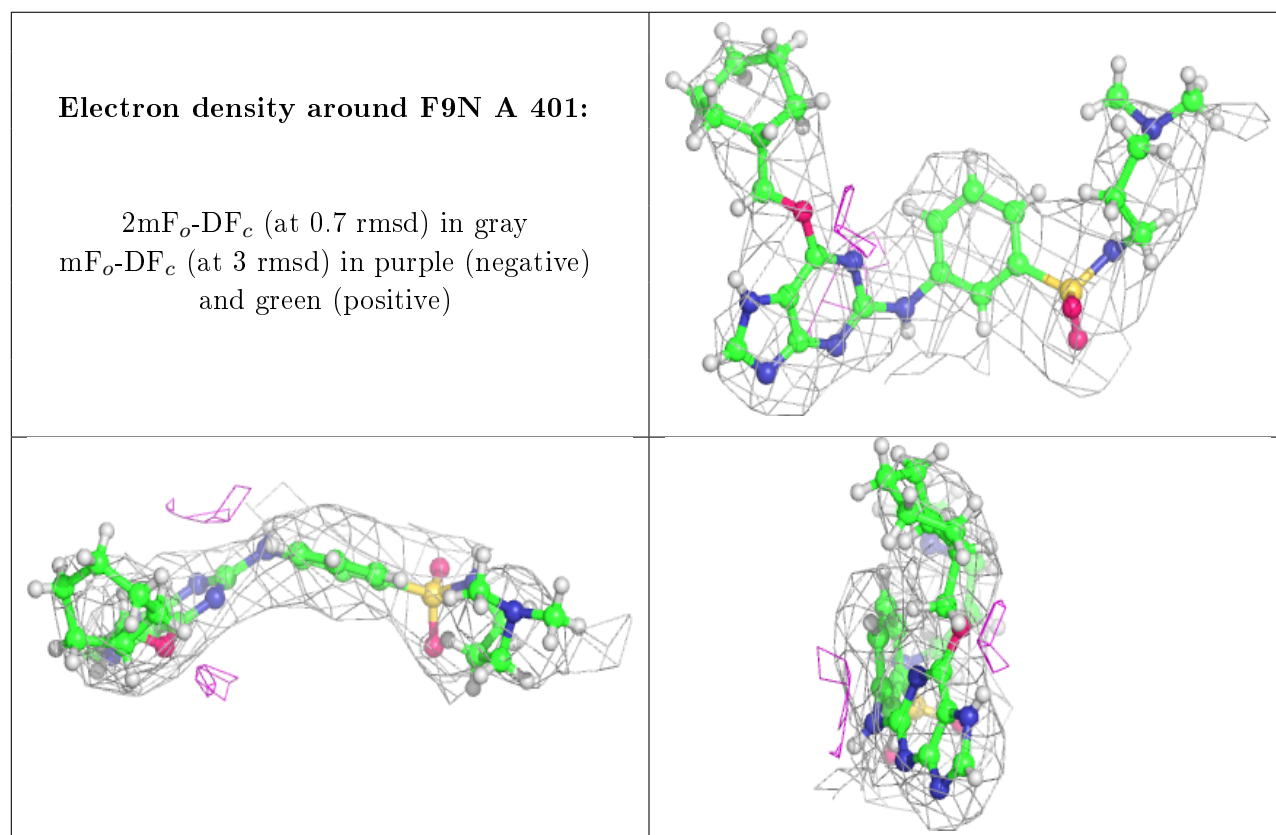
There are no monosaccharides in this entry.

6.4 Ligands [i](#)

In the following table, the Atoms column lists the number of modelled atoms in the group and the number defined in the chemical component dictionary. The B-factors column lists the minimum, median, 95th percentile and maximum values of B factors of atoms in the group. The column labelled 'Q<0.9' lists the number of atoms with occupancy less than 0.9.

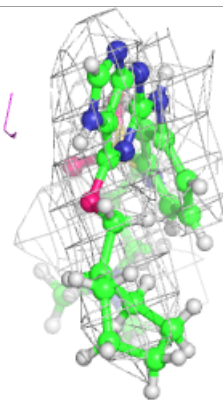
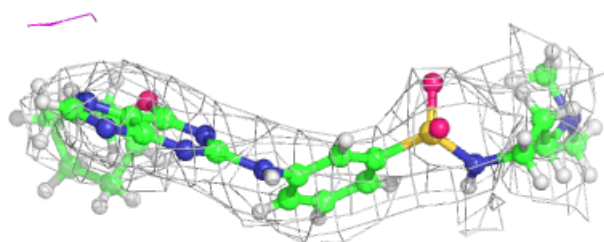
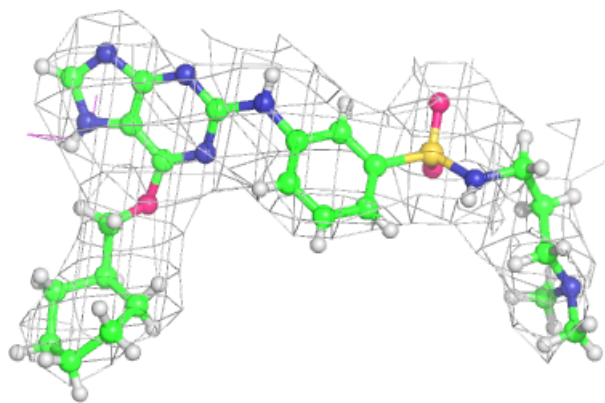
Mol	Type	Chain	Res	Atoms	RSCC	RSR	B-factors(Å ²)	Q<0.9
2	F9N	A	401	34/34	0.84	0.38	50,79,141,168	0
2	F9N	C	401	34/34	0.85	0.26	48,92,167,177	0
2	F9N	B	401	34/34	0.85	0.35	58,93,125,126	0

The following is a graphical depiction of the model fit to experimental electron density of all instances of the Ligand of Interest. In addition, ligands with molecular weight > 250 and outliers as shown on the geometry validation Tables will also be included. Each fit is shown from different orientation to approximate a three-dimensional view.

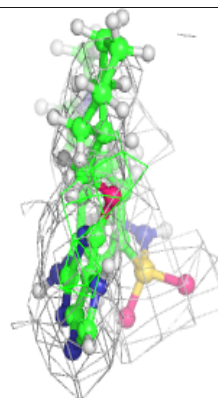
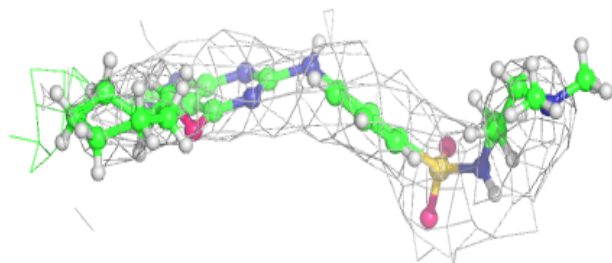
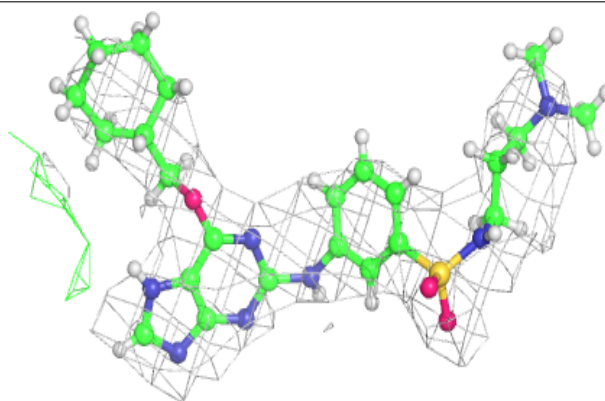


Electron density around F9N C 401:

$2mF_o-DF_c$ (at 0.7 rmsd) in gray
 mF_o-DF_c (at 3 rmsd) in purple (negative)
and green (positive)

**Electron density around F9N B 401:**

$2mF_o-DF_c$ (at 0.7 rmsd) in gray
 mF_o-DF_c (at 3 rmsd) in purple (negative)
and green (positive)



6.5 Other polymers

There are no such residues in this entry.