



# Full wwPDB X-ray Structure Validation Report ⓘ

Jan 25, 2023 – 03:59 AM EST

PDB ID : 3RZA  
Title : Crystal structure of a tripeptidase (SAV1512) from staphylococcus aureus subsp. aureus mu50 at 2.10 Å resolution  
Authors : Joint Center for Structural Genomics (JCSG)  
Deposited on : 2011-05-11  
Resolution : 2.10 Å (reported)

This is a Full wwPDB X-ray Structure Validation Report for a publicly released PDB entry.

We welcome your comments at [validation@mail.wwpdb.org](mailto:validation@mail.wwpdb.org)

A user guide is available at

<https://www.wwpdb.org/validation/2017/XrayValidationReportHelp>

with specific help available everywhere you see the ⓘ symbol.

The types of validation reports are described at

<http://www.wwpdb.org/validation/2017/FAQs#types>.

---

The following versions of software and data (see [references ⓘ](#)) were used in the production of this report:

MolProbity : 4.02b-467  
Mogul : 1.8.5 (274361), CSD as541be (2020)  
Xtriage (Phenix) : 1.13  
EDS : 2.31.2  
Percentile statistics : 20191225.v01 (using entries in the PDB archive December 25th 2019)  
Refmac : 5.8.0158  
CCP4 : 7.0.044 (Gargrove)  
Ideal geometry (proteins) : Engh & Huber (2001)  
Ideal geometry (DNA, RNA) : Parkinson et al. (1996)  
Validation Pipeline (wwPDB-VP) : 2.31.2

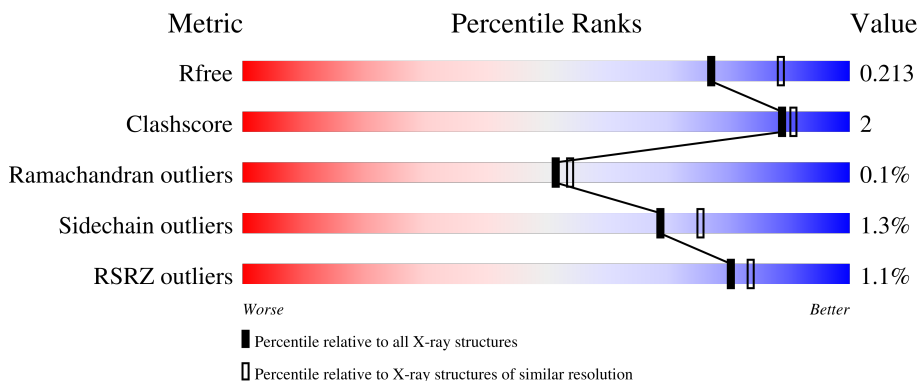
# 1 Overall quality at a glance

The following experimental techniques were used to determine the structure:

*X-RAY DIFFRACTION*

The reported resolution of this entry is 2.10 Å.

Percentile scores (ranging between 0-100) for global validation metrics of the entry are shown in the following graphic. The table shows the number of entries on which the scores are based.



Metric	Whole archive (#Entries)	Similar resolution (#Entries, resolution range(Å))
$R_{free}$	130704	5197 (2.10-2.10)
Clashscore	141614	5710 (2.10-2.10)
Ramachandran outliers	138981	5647 (2.10-2.10)
Sidechain outliers	138945	5648 (2.10-2.10)
RSRZ outliers	127900	5083 (2.10-2.10)

The table below summarises the geometric issues observed across the polymeric chains and their fit to the electron density. The red, orange, yellow and green segments of the lower bar indicate the fraction of residues that contain outliers for  $\geq 3$ , 2, 1 and 0 types of geometric quality criteria respectively. A grey segment represents the fraction of residues that are not modelled. The numeric value for each fraction is indicated below the corresponding segment, with a dot representing fractions  $\leq 5\%$ . The upper red bar (where present) indicates the fraction of residues that have poor fit to the electron density. The numeric value is given above the bar.

Mol	Chain	Length	Quality of chain
1	A	396	 87% 8% 6%
1	B	396	 2% 88% 6% 6%

## 2 Entry composition [i](#)

There are 9 unique types of molecules in this entry. The entry contains 6117 atoms, of which 0 are hydrogens and 0 are deuteriums.

In the tables below, the ZeroOcc column contains the number of atoms modelled with zero occupancy, the AltConf column contains the number of residues with at least one atom in alternate conformation and the Trace column contains the number of residues modelled with at most 2 atoms.

- Molecule 1 is a protein called tripeptidase.

Mol	Chain	Residues	Atoms						ZeroOcc	AltConf	Trace
			Total	C	N	O	S	Se			
1	A	373	2821	1783	468	561	1	8	0	11	0
1	B	373	2788	1759	466	554	1	8	0	4	0

There are 38 discrepancies between the modelled and reference sequences:

Chain	Residue	Modelled	Actual	Comment	Reference
A	-18	MSE	-	expression tag	UNP Q99TY1
A	-17	GLY	-	expression tag	UNP Q99TY1
A	-16	SER	-	expression tag	UNP Q99TY1
A	-15	ASP	-	expression tag	UNP Q99TY1
A	-14	LYS	-	expression tag	UNP Q99TY1
A	-13	ILE	-	expression tag	UNP Q99TY1
A	-12	HIS	-	expression tag	UNP Q99TY1
A	-11	HIS	-	expression tag	UNP Q99TY1
A	-10	HIS	-	expression tag	UNP Q99TY1
A	-9	HIS	-	expression tag	UNP Q99TY1
A	-8	HIS	-	expression tag	UNP Q99TY1
A	-7	HIS	-	expression tag	UNP Q99TY1
A	-6	GLU	-	expression tag	UNP Q99TY1
A	-5	ASN	-	expression tag	UNP Q99TY1
A	-4	LEU	-	expression tag	UNP Q99TY1
A	-3	TYR	-	expression tag	UNP Q99TY1
A	-2	PHE	-	expression tag	UNP Q99TY1
A	-1	GLN	-	expression tag	UNP Q99TY1
A	0	GLY	-	expression tag	UNP Q99TY1
B	-18	MSE	-	expression tag	UNP Q99TY1
B	-17	GLY	-	expression tag	UNP Q99TY1
B	-16	SER	-	expression tag	UNP Q99TY1
B	-15	ASP	-	expression tag	UNP Q99TY1
B	-14	LYS	-	expression tag	UNP Q99TY1
B	-13	ILE	-	expression tag	UNP Q99TY1

*Continued on next page...*

*Continued from previous page...*

Chain	Residue	Modelled	Actual	Comment	Reference
B	-12	HIS	-	expression tag	UNP Q99TY1
B	-11	HIS	-	expression tag	UNP Q99TY1
B	-10	HIS	-	expression tag	UNP Q99TY1
B	-9	HIS	-	expression tag	UNP Q99TY1
B	-8	HIS	-	expression tag	UNP Q99TY1
B	-7	HIS	-	expression tag	UNP Q99TY1
B	-6	GLU	-	expression tag	UNP Q99TY1
B	-5	ASN	-	expression tag	UNP Q99TY1
B	-4	LEU	-	expression tag	UNP Q99TY1
B	-3	TYR	-	expression tag	UNP Q99TY1
B	-2	PHE	-	expression tag	UNP Q99TY1
B	-1	GLN	-	expression tag	UNP Q99TY1
B	0	GLY	-	expression tag	UNP Q99TY1

- Molecule 2 is ZINC ION (three-letter code: ZN) (formula: Zn).

Mol	Chain	Residues	Atoms	ZeroOcc	AltConf
2	A	1	Total Zn 1 1	0	0
2	B	1	Total Zn 1 1	0	0

- Molecule 3 is CALCIUM ION (three-letter code: CA) (formula: Ca).

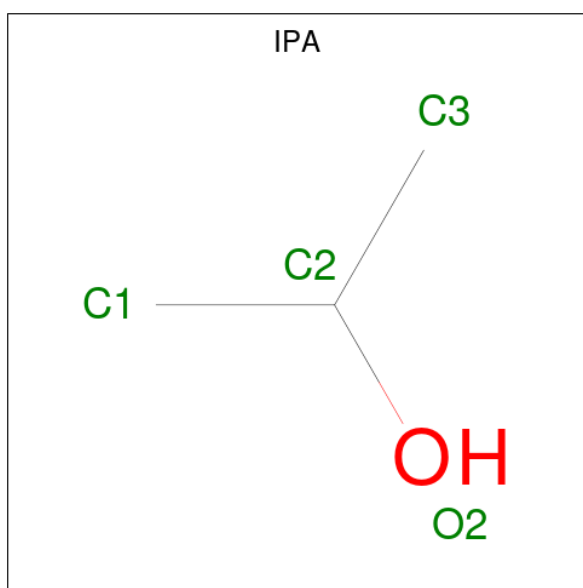
Mol	Chain	Residues	Atoms	ZeroOcc	AltConf
3	A	2	Total Ca 2 2	0	0
3	B	3	Total Ca 3 3	0	0

- Molecule 4 is CITRIC ACID (three-letter code: CIT) (formula: C<sub>6</sub>H<sub>8</sub>O<sub>7</sub>).



Mol	Chain	Residues	Atoms			ZeroOcc	AltConf
4	A	1	Total	C	O	0	0
			13	6	7		
4	A	1	Total	C	O	0	0
			13	6	7		

- Molecule 5 is ISOPROPYL ALCOHOL (three-letter code: IPA) (formula:  $C_3H_8O$ ).



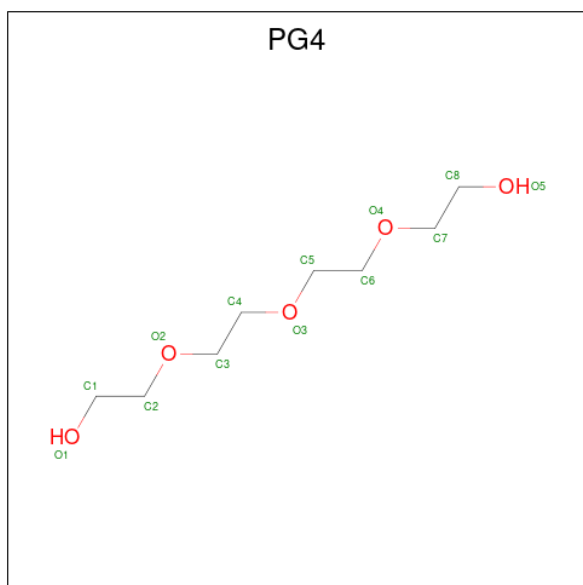
Mol	Chain	Residues	Atoms			ZeroOcc	AltConf
5	A	1	Total	C	O	0	0
			4	3	1		

- Molecule 6 is DI(HYDROXYETHYL)ETHER (three-letter code: PEG) (formula:  $C_4H_{10}O_3$ ).



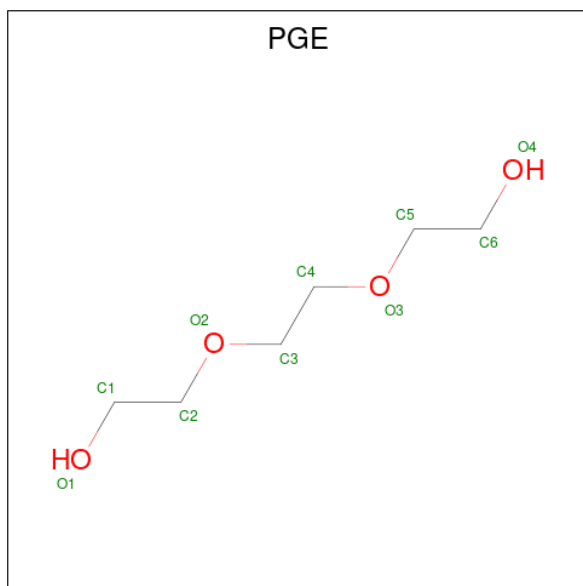
Mol	Chain	Residues	Atoms	ZeroOcc	AltConf
6	A	1	Total C O 7 4 3	0	0
6	A	1	Total C O 5 3 2	0	0
6	A	1	Total C O 7 4 3	0	0
6	B	1	Total C O 7 4 3	0	0

- Molecule 7 is TETRAETHYLENE GLYCOL (three-letter code: PG4) (formula:  $C_8H_{18}O_5$ ).



Mol	Chain	Residues	Atoms			ZeroOcc	AltConf
7	A	1	Total	C	O	0	0
			13	8	5		
7	B	1	Total	C	O	0	0
			13	8	5		
7	B	1	Total	C	O	0	0
			12	8	4		

- Molecule 8 is TRIETHYLENE GLYCOL (three-letter code: PGE) (formula: C<sub>6</sub>H<sub>14</sub>O<sub>4</sub>).



Mol	Chain	Residues	Atoms			ZeroOcc	AltConf
8	B	1	Total	C	O	0	0
			10	6	4		

- Molecule 9 is water.

Mol	Chain	Residues	Atoms		ZeroOcc	AltConf
9	A	216	Total	O	0	2
			216	216		
9	B	181	Total	O	0	0
			181	181		





## 4 Data and refinement statistics

Property	Value	Source
Space group	P 1	Depositor
Cell constants a, b, c, $\alpha$ , $\beta$ , $\gamma$	47.00Å 57.80Å 79.86Å 89.67° 73.38° 72.36°	Depositor
Resolution (Å)	29.52 – 2.10 29.52 – 2.10	Depositor EDS
% Data completeness (in resolution range)	96.4 (29.52-2.10) 96.4 (29.52-2.10)	Depositor EDS
$R_{merge}$	0.14	Depositor
$R_{sym}$	(Not available)	Depositor
$\langle I/\sigma(I) \rangle$ <sup>1</sup>	1.86 (at 2.10Å)	Xtrriage
Refinement program	REFMAC 5.5.0110	Depositor
R, $R_{free}$	0.167 , 0.212 0.170 , 0.213	Depositor DCC
$R_{free}$ test set	2176 reflections (5.02%)	wwPDB-VP
Wilson B-factor (Å <sup>2</sup> )	23.6	Xtrriage
Anisotropy	0.293	Xtrriage
Bulk solvent $k_{sol}$ (e/Å <sup>3</sup> ), $B_{sol}$ (Å <sup>2</sup> )	0.37 , 45.5	EDS
L-test for twinning <sup>2</sup>	$\langle  L  \rangle = 0.48$ , $\langle L^2 \rangle = 0.31$	Xtrriage
Estimated twinning fraction	No twinning to report.	Xtrriage
$F_o, F_c$ correlation	0.96	EDS
Total number of atoms	6117	wwPDB-VP
Average B, all atoms (Å <sup>2</sup> )	25.0	wwPDB-VP

Xtrriage's analysis on translational NCS is as follows: *The largest off-origin peak in the Patterson function is 7.26% of the height of the origin peak. No significant pseudotranslation is detected.*

<sup>1</sup>Intensities estimated from amplitudes.

<sup>2</sup>Theoretical values of  $\langle |L| \rangle$ ,  $\langle L^2 \rangle$  for acentric reflections are 0.5, 0.333 respectively for untwinned datasets, and 0.375, 0.2 for perfectly twinned datasets.

## 5 Model quality [i](#)

### 5.1 Standard geometry [i](#)

Bond lengths and bond angles in the following residue types are not validated in this section: ZN, PEG, CIT, PGE, CA, IPA, PG4

The Z score for a bond length (or angle) is the number of standard deviations the observed value is removed from the expected value. A bond length (or angle) with  $|Z| > 5$  is considered an outlier worth inspection. RMSZ is the root-mean-square of all Z scores of the bond lengths (or angles).

Mol	Chain	Bond lengths		Bond angles	
		RMSZ	# $ Z  > 5$	RMSZ	# $ Z  > 5$
1	A	0.74	0/2879	0.69	2/3889 (0.1%)
1	B	0.72	0/2826	0.69	4/3819 (0.1%)
All	All	0.73	0/5705	0.69	6/7708 (0.1%)

There are no bond length outliers.

All (6) bond angle outliers are listed below:

Mol	Chain	Res	Type	Atoms	Z	Observed(°)	Ideal(°)
1	B	252	ARG	NE-CZ-NH1	5.62	123.11	120.30
1	A	222	ASP	CB-CG-OD1	5.49	123.24	118.30
1	B	215	ARG	NE-CZ-NH2	5.33	122.96	120.30
1	A	309	ARG	NE-CZ-NH1	5.03	122.81	120.30
1	B	374[A]	ARG	NE-CZ-NH1	5.02	122.81	120.30
1	B	374[B]	ARG	NE-CZ-NH1	5.02	122.81	120.30

There are no chirality outliers.

There are no planarity outliers.

### 5.2 Too-close contacts [i](#)

In the following table, the Non-H and H(model) columns list the number of non-hydrogen atoms and hydrogen atoms in the chain respectively. The H(added) column lists the number of hydrogen atoms added and optimized by MolProbity. The Clashes column lists the number of clashes within the asymmetric unit, whereas Symm-Clashes lists symmetry-related clashes.

Mol	Chain	Non-H	H(model)	H(added)	Clashes	Symm-Clashes
1	A	2821	0	2895	14	0
1	B	2788	0	2820	8	0
2	A	1	0	0	0	0

*Continued on next page...*

Continued from previous page...

Mol	Chain	Non-H	H(model)	H(added)	Clashes	Symm-Clashes
2	B	1	0	0	0	0
3	A	2	0	0	0	0
3	B	3	0	0	0	0
4	A	26	0	10	0	0
5	A	4	0	8	0	0
6	A	19	0	25	0	0
6	B	7	0	10	0	0
7	A	13	0	18	0	0
7	B	25	0	33	0	0
8	B	10	0	14	0	0
9	A	216	0	0	0	0
9	B	181	0	0	0	0
All	All	6117	0	5833	22	0

The all-atom clashscore is defined as the number of clashes found per 1000 atoms (including hydrogen atoms). The all-atom clashscore for this structure is 2.

All (22) close contacts within the same asymmetric unit are listed below, sorted by their clash magnitude.

Atom-1	Atom-2	Interatomic distance (Å)	Clash overlap (Å)
1:A:185[A]:ILE:HG23	1:A:249:ALA:HB3	1.75	0.67
1:A:80:MSE:HE2	1:A:139:ILE:HG22	1.77	0.67
1:A:254[B]:HIS:CE1	1:A:319:ILE:CG2	2.90	0.55
1:A:66:ILE:HD13	1:A:71:VAL:HG11	1.92	0.50
1:A:245:VAL:HG12	1:A:247[A]:LEU:HD22	1.95	0.49
1:B:223:GLU:HG3	1:B:224:ILE:HG23	1.94	0.48
1:B:53:LEU:HD22	1:B:141:VAL:HG23	1.95	0.48
1:A:75:TYR:CZ	1:A:329:ILE:HG21	2.50	0.46
1:B:176:VAL:HB	1:B:338:ILE:HB	1.98	0.45
1:A:188:LYS:HE2	1:A:190:ILE:HD11	1.98	0.44
1:A:188:LYS:CE	1:A:190:ILE:HD11	2.48	0.44
1:B:75:TYR:CZ	1:B:329[B]:ILE:HG21	2.53	0.44
1:B:254[B]:HIS:CE1	1:B:319:ILE:CG2	3.02	0.43
1:A:40:LEU:HD11	1:A:122:LEU:HD22	1.99	0.43
1:A:80:MSE:HE2	1:A:139:ILE:CG2	2.47	0.42
1:B:83:VAL:HG21	1:B:347:HIS:HA	2.01	0.42
1:B:115:LEU:HD21	1:B:139:ILE:HG23	2.01	0.42
1:A:78:SER:N	1:A:118:MSE:HE1	2.34	0.42
1:A:86:ALA:HB2	1:A:106:ILE:HG12	2.02	0.42
1:A:118:MSE:HE3	1:A:166:ILE:HD12	2.01	0.41
1:A:193[A]:THR:HG23	1:A:243:ASP:OD2	2.21	0.40

Continued on next page...

Continued from previous page...

Atom-1	Atom-2	Interatomic distance (Å)	Clash overlap (Å)
1:B:93:VAL:HG13	1:B:355:ILE:HD11	2.03	0.40

There are no symmetry-related clashes.

## 5.3 Torsion angles [i](#)

### 5.3.1 Protein backbone [i](#)

In the following table, the Percentiles column shows the percent Ramachandran outliers of the chain as a percentile score with respect to all X-ray entries followed by that with respect to entries of similar resolution.

The Analysed column shows the number of residues for which the backbone conformation was analysed, and the total number of residues.

Mol	Chain	Analysed	Favoured	Allowed	Outliers	Percentiles	
1	A	380/396 (96%)	370 (97%)	10 (3%)	0	100	100
1	B	373/396 (94%)	363 (97%)	9 (2%)	1 (0%)	41	41
All	All	753/792 (95%)	733 (97%)	19 (2%)	1 (0%)	51	54

All (1) Ramachandran outliers are listed below:

Mol	Chain	Res	Type
1	B	167	ASP

### 5.3.2 Protein sidechains [i](#)

In the following table, the Percentiles column shows the percent sidechain outliers of the chain as a percentile score with respect to all X-ray entries followed by that with respect to entries of similar resolution.

The Analysed column shows the number of residues for which the sidechain conformation was analysed, and the total number of residues.

Mol	Chain	Analysed	Rotameric	Outliers	Percentiles	
1	A	310/318 (98%)	305 (98%)	5 (2%)	62	69
1	B	299/318 (94%)	296 (99%)	3 (1%)	76	82
All	All	609/636 (96%)	601 (99%)	8 (1%)	69	75

All (8) residues with a non-rotameric sidechain are listed below:

Mol	Chain	Res	Type
1	A	1	MSE
1	A	182	GLN
1	A	232	PHE
1	A	256	PRO
1	A	343	TYR
1	B	182	GLN
1	B	232	PHE
1	B	343	TYR

Sometimes sidechains can be flipped to improve hydrogen bonding and reduce clashes. All (1) such sidechains are listed below:

Mol	Chain	Res	Type
1	B	5	GLN

### 5.3.3 RNA [i](#)

There are no RNA molecules in this entry.

## 5.4 Non-standard residues in protein, DNA, RNA chains [i](#)

There are no non-standard protein/DNA/RNA residues in this entry.

## 5.5 Carbohydrates [i](#)

There are no monosaccharides in this entry.

## 5.6 Ligand geometry [i](#)

Of 18 ligands modelled in this entry, 7 are monoatomic - leaving 11 for Mogul analysis.

In the following table, the Counts columns list the number of bonds (or angles) for which Mogul statistics could be retrieved, the number of bonds (or angles) that are observed in the model and the number of bonds (or angles) that are defined in the Chemical Component Dictionary. The Link column lists molecule types, if any, to which the group is linked. The Z score for a bond length (or angle) is the number of standard deviations the observed value is removed from the expected value. A bond length (or angle) with  $|Z| > 2$  is considered an outlier worth inspection. RMSZ is the root-mean-square of all Z scores of the bond lengths (or angles).

Mol	Type	Chain	Res	Link	Bond lengths			Bond angles		
					Counts	RMSZ	# Z  > 2	Counts	RMSZ	# Z  > 2
4	CIT	A	406	-	12,12,12	1.03	0	17,17,17	1.67	3 (17%)
6	PEG	A	412	-	6,6,6	0.48	0	5,5,5	0.50	0
5	IPA	A	408	-	3,3,3	0.52	0	3,3,3	0.38	0
6	PEG	A	411	-	4,4,6	0.58	0	3,3,5	0.26	0
6	PEG	B	410	-	6,6,6	0.46	0	5,5,5	0.54	0
8	PGE	B	413	-	9,9,9	0.64	0	8,8,8	0.52	0
7	PG4	A	416	-	12,12,12	0.54	0	11,11,11	0.23	0
7	PG4	B	415	3	11,11,12	0.80	0	10,10,11	0.34	0
7	PG4	B	414	-	12,12,12	0.42	0	11,11,11	0.27	0
4	CIT	A	407	-	12,12,12	1.06	0	17,17,17	1.58	3 (17%)
6	PEG	A	409	-	6,6,6	0.48	0	5,5,5	0.45	0

In the following table, the Chirals column lists the number of chiral outliers, the number of chiral centers analysed, the number of these observed in the model and the number defined in the Chemical Component Dictionary. Similar counts are reported in the Torsion and Rings columns. '-' means no outliers of that kind were identified.

Mol	Type	Chain	Res	Link	Chirals	Torsions	Rings
4	CIT	A	406	-	-	5/16/16/16	-
6	PEG	A	412	-	-	3/4/4/4	-
6	PEG	A	411	-	-	2/2/2/4	-
6	PEG	B	410	-	-	2/4/4/4	-
8	PGE	B	413	-	-	4/7/7/7	-
7	PG4	A	416	-	-	1/10/10/10	-
7	PG4	B	415	3	-	3/9/9/10	-
7	PG4	B	414	-	-	0/10/10/10	-
4	CIT	A	407	-	-	4/16/16/16	-
6	PEG	A	409	-	-	3/4/4/4	-

There are no bond length outliers.

All (6) bond angle outliers are listed below:

Mol	Chain	Res	Type	Atoms	Z	Observed(°)	Ideal(°)
4	A	406	CIT	O6-C6-C3	4.45	120.77	113.05
4	A	407	CIT	O6-C6-C3	3.34	118.85	113.05
4	A	406	CIT	O4-C5-C4	2.37	121.97	114.35
4	A	406	CIT	O2-C1-C2	2.26	121.60	114.35
4	A	407	CIT	O2-C1-C2	2.21	121.46	114.35
4	A	407	CIT	C4-C3-C2	2.18	114.84	109.16

There are no chirality outliers.

All (27) torsion outliers are listed below:

Mol	Chain	Res	Type	Atoms
4	A	406	CIT	C2-C3-C6-O6
4	A	406	CIT	O7-C3-C6-O6
6	A	412	PEG	O2-C3-C4-O4
6	A	411	PEG	O1-C1-C2-O2
6	A	409	PEG	O1-C1-C2-O2
6	B	410	PEG	O1-C1-C2-O2
8	B	413	PGE	O1-C1-C2-O2
6	A	409	PEG	O2-C3-C4-O4
8	B	413	PGE	O3-C5-C6-O4
6	B	410	PEG	C1-C2-O2-C3
7	B	415	PG4	C8-C7-O4-C6
4	A	406	CIT	C4-C3-C6-O6
4	A	407	CIT	C4-C3-C6-O5
4	A	407	CIT	C4-C3-C6-O6
6	A	412	PEG	O1-C1-C2-O2
8	B	413	PGE	C6-C5-O3-C4
4	A	406	CIT	C2-C3-C6-O5
4	A	406	CIT	C4-C3-C6-O5
6	A	411	PEG	C1-C2-O2-C3
4	A	407	CIT	C2-C3-C6-O5
4	A	407	CIT	C2-C3-C6-O6
6	A	412	PEG	C1-C2-O2-C3
7	A	416	PG4	C6-C5-O3-C4
6	A	409	PEG	C1-C2-O2-C3
8	B	413	PGE	O2-C3-C4-O3
7	B	415	PG4	O1-C1-C2-O2
7	B	415	PG4	O3-C5-C6-O4

There are no ring outliers.

No monomer is involved in short contacts.

## 5.7 Other polymers [i](#)

There are no such residues in this entry.

## 5.8 Polymer linkage issues [i](#)

There are no chain breaks in this entry.

## 6 Fit of model and data [i](#)

### 6.1 Protein, DNA and RNA chains [i](#)

In the following table, the column labelled ‘#RSRZ> 2’ contains the number (and percentage) of RSRZ outliers, followed by percent RSRZ outliers for the chain as percentile scores relative to all X-ray entries and entries of similar resolution. The OWAB column contains the minimum, median, 95<sup>th</sup> percentile and maximum values of the occupancy-weighted average B-factor per residue. The column labelled ‘Q< 0.9’ lists the number of (and percentage) of residues with an average occupancy less than 0.9.

Mol	Chain	Analysed	<RSRZ>	#RSRZ>2	OWAB(Å <sup>2</sup> )	Q<0.9
1	A	365/396 (92%)	-0.43	1 (0%) 94 94	14, 21, 34, 55	0
1	B	365/396 (92%)	-0.26	7 (1%) 66 71	15, 24, 38, 62	0
All	All	730/792 (92%)	-0.35	8 (1%) 80 84	14, 22, 37, 62	0

All (8) RSRZ outliers are listed below:

Mol	Chain	Res	Type	RSRZ
1	B	166	ILE	3.4
1	B	78	SER	2.4
1	B	77	THR	2.3
1	B	374[A]	ARG	2.2
1	B	66	ILE	2.1
1	A	66	ILE	2.1
1	B	113	ALA	2.1
1	B	165	ALA	2.1

### 6.2 Non-standard residues in protein, DNA, RNA chains [i](#)

There are no non-standard protein/DNA/RNA residues in this entry.

### 6.3 Carbohydrates [i](#)

There are no monosaccharides in this entry.

### 6.4 Ligands [i](#)

In the following table, the Atoms column lists the number of modelled atoms in the group and the number defined in the chemical component dictionary. The B-factors column lists the minimum,



median, 95<sup>th</sup> percentile and maximum values of B factors of atoms in the group. The column labelled 'Q< 0.9' lists the number of atoms with occupancy less than 0.9.

Mol	Type	Chain	Res	Atoms	RSCC	RSR	B-factors(Å <sup>2</sup> )	Q<0.9
4	CIT	A	407	13/13	0.81	0.16	48,55,61,62	0
6	PEG	B	410	7/7	0.82	0.14	49,49,54,54	0
8	PGE	B	413	10/10	0.82	0.20	50,53,56,58	0
6	PEG	A	411	5/7	0.83	0.12	43,46,48,51	0
4	CIT	A	406	13/13	0.86	0.17	50,60,62,64	0
6	PEG	A	412	7/7	0.86	0.20	56,58,65,68	0
6	PEG	A	409	7/7	0.87	0.23	51,52,54,55	0
7	PG4	B	415	12/13	0.88	0.18	40,44,49,50	0
3	CA	A	405	1/1	0.90	0.17	59,59,59,59	0
5	IPA	A	408	4/4	0.90	0.15	34,37,37,37	0
3	CA	B	404	1/1	0.91	0.20	65,65,65,65	0
3	CA	B	403	1/1	0.92	0.24	61,61,61,61	0
7	PG4	B	414	13/13	0.95	0.10	26,29,35,37	0
3	CA	B	402	1/1	0.95	0.07	38,38,38,38	0
7	PG4	A	416	13/13	0.95	0.11	27,31,35,35	0
3	CA	A	402	1/1	0.98	0.06	32,32,32,32	0
2	ZN	A	401	1/1	1.00	0.05	26,26,26,26	0
2	ZN	B	401	1/1	1.00	0.07	35,35,35,35	0

## 6.5 Other polymers [i](#)

There are no such residues in this entry.