



Full wwPDB X-ray Structure Validation Report ⓘ

Aug 27, 2024 – 07:15 pm BST

PDB ID : 8RYO
Title : Structure of S2-198 TCR in complex with HLA-A*03:01 bound to ELFSYLIEK peptide
Authors : Karuppiah, V.
Deposited on : 2024-02-09
Resolution : 2.05 Å(reported)

This is a Full wwPDB X-ray Structure Validation Report for a publicly released PDB entry.

We welcome your comments at validation@mail.wwpdb.org

A user guide is available at

<https://www.wwpdb.org/validation/2017/XrayValidationReportHelp>

with specific help available everywhere you see the ⓘ symbol.

The types of validation reports are described at

<http://www.wwpdb.org/validation/2017/FAQs#types>.

The following versions of software and data (see [references ⓘ](#)) were used in the production of this report:

MolProbity : 4.02b-467
Mogul : 1.8.4, CSD as541be (2020)
Xtriage (Phenix) : 1.13
EDS : 3.0
Percentile statistics : 20231227.v01 (using entries in the PDB archive December 27th 2023)
CCP4 : 9.0.002 (Gargrove)
Density-Fitness : 1.0.11
Ideal geometry (proteins) : Engh & Huber (2001)
Ideal geometry (DNA, RNA) : Parkinson et al. (1996)
Validation Pipeline (wwPDB-VP) : 2.38.2

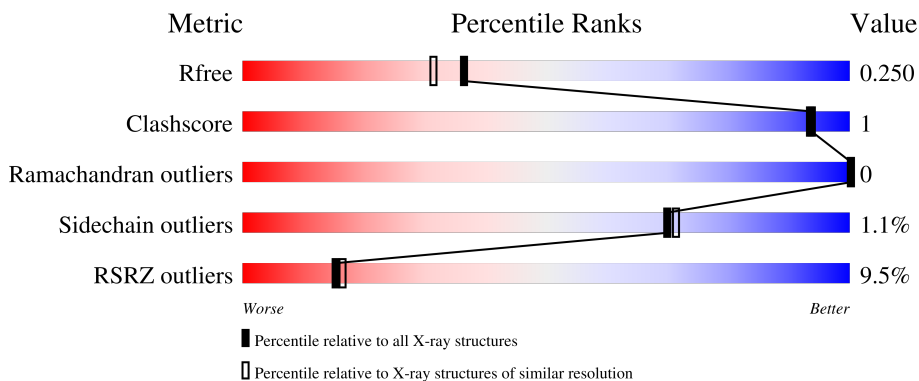
1 Overall quality at a glance

The following experimental techniques were used to determine the structure:

X-RAY DIFFRACTION

The reported resolution of this entry is 2.05 Å.

Percentile scores (ranging between 0-100) for global validation metrics of the entry are shown in the following graphic. The table shows the number of entries on which the scores are based.



Metric	Whole archive (#Entries)	Similar resolution (#Entries, resolution range(Å))
R_{free}	164625	2096 (2.04-2.04)
Clashscore	180529	2229 (2.04-2.04)
Ramachandran outliers	177936	2217 (2.04-2.04)
Sidechain outliers	177891	2217 (2.04-2.04)
RSRZ outliers	164620	2096 (2.04-2.04)

The table below summarises the geometric issues observed across the polymeric chains and their fit to the electron density. The red, orange, yellow and green segments of the lower bar indicate the fraction of residues that contain outliers for ≥ 3 , 2, 1 and 0 types of geometric quality criteria respectively. A grey segment represents the fraction of residues that are not modelled. The numeric value for each fraction is indicated below the corresponding segment, with a dot representing fractions $\leq 5\%$. The upper red bar (where present) indicates the fraction of residues that have poor fit to the electron density. The numeric value is given above the bar.

Mol	Chain	Length	Quality of chain
1	A	276	 11% 97%
2	B	100	 2% 89% 10%
3	C	9	 100%
4	D	198	 13% 87% 5% 8%
5	E	245	 8% 96%

2 Entry composition [i](#)

There are 9 unique types of molecules in this entry. The entry contains 6756 atoms, of which 0 are hydrogens and 0 are deuteriums.

In the tables below, the ZeroOcc column contains the number of atoms modelled with zero occupancy, the AltConf column contains the number of residues with at least one atom in alternate conformation and the Trace column contains the number of residues modelled with at most 2 atoms.

- Molecule 1 is a protein called HLA class I histocompatibility antigen, A alpha chain.

Mol	Chain	Residues	Atoms					ZeroOcc	AltConf	Trace
			Total	C	N	O	S			
1	A	275	2237	1391	404	433	9	0	0	0

There is a discrepancy between the modelled and reference sequences:

Chain	Residue	Modelled	Actual	Comment	Reference
A	276	PRO	-	expression tag	UNP P04439

- Molecule 2 is a protein called Beta-2-microglobulin.

Mol	Chain	Residues	Atoms					ZeroOcc	AltConf	Trace
			Total	C	N	O	S			
2	B	99	829	528	140	158	3	0	0	0

There is a discrepancy between the modelled and reference sequences:

Chain	Residue	Modelled	Actual	Comment	Reference
B	0	MET	-	initiating methionine	UNP P61769

- Molecule 3 is a protein called ELFSYLIEK peptide.

Mol	Chain	Residues	Atoms				ZeroOcc	AltConf	Trace
			Total	C	N	O			
3	C	9	81	55	10	16	0	0	0

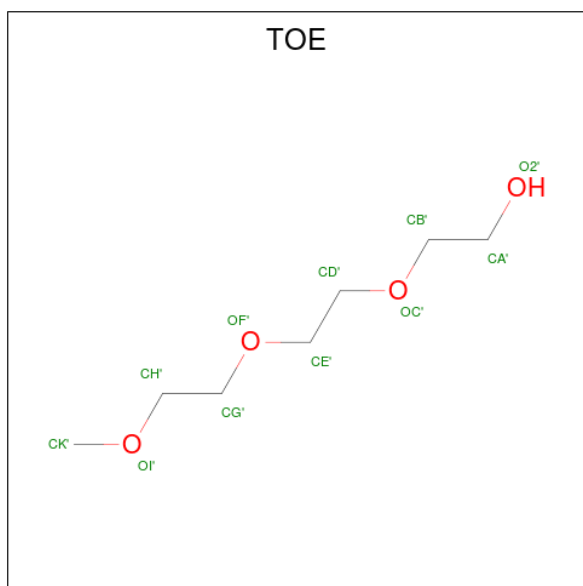
- Molecule 4 is a protein called TCR alpha.

Mol	Chain	Residues	Atoms					ZeroOcc	AltConf	Trace
			Total	C	N	O	S			
4	D	183	1413	878	243	282	10	0	1	0

- Molecule 5 is a protein called TCR beta.

Mol	Chain	Residues	Atoms					ZeroOcc	AltConf	Trace
			Total	C	N	O	S			
5	E	243	1923	1213	330	371	9	0	0	0

- Molecule 6 is 2-[2-(2-METHOXY-ETHOXY)-ETHOXY]-ETHOXYL (three-letter code: TOE) (formula: C₇H₁₆O₄).



Mol	Chain	Residues	Atoms			ZeroOcc	AltConf
			Total	C	O		
6	A	1	11	7	4	0	0

- Molecule 7 is 1,2-ETHANEDIOL (three-letter code: EDO) (formula: C₂H₆O₂).



Mol	Chain	Residues	Atoms	ZeroOcc	AltConf
7	B	1	Total C O 4 2 2	0	0
7	D	1	Total C O 4 2 2	0	0

- Molecule 8 is PHOSPHATE ION (three-letter code: PO4) (formula: O₄P).



Mol	Chain	Residues	Atoms	ZeroOcc	AltConf
8	B	1	Total O P 5 4 1	0	0

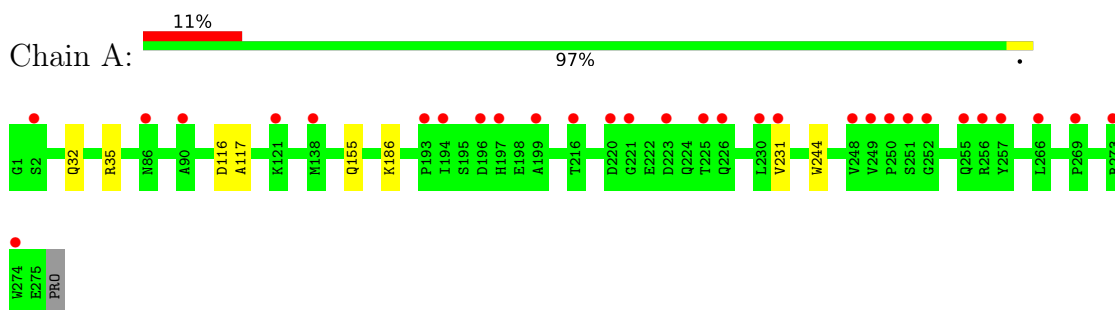
- Molecule 9 is water.

Mol	Chain	Residues	Atoms	ZeroOcc	AltConf
9	A	106	Total O 106 106	0	0
9	B	38	Total O 38 38	0	0
9	C	8	Total O 8 8	0	0
9	D	37	Total O 37 37	0	0
9	E	60	Total O 60 60	0	0

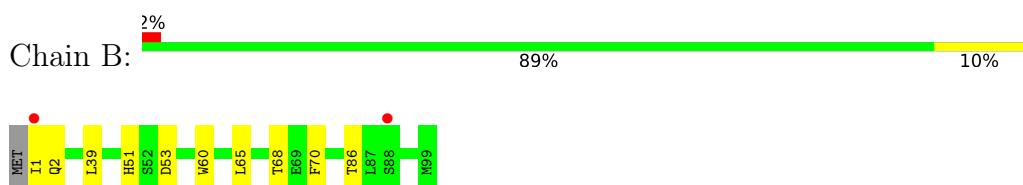
3 Residue-property plots i

These plots are drawn for all protein, RNA, DNA and oligosaccharide chains in the entry. The first graphic for a chain summarises the proportions of the various outlier classes displayed in the second graphic. The second graphic shows the sequence view annotated by issues in geometry and electron density. Residues are color-coded according to the number of geometric quality criteria for which they contain at least one outlier: green = 0, yellow = 1, orange = 2 and red = 3 or more. A red dot above a residue indicates a poor fit to the electron density ($RSRZ > 2$). Stretches of 2 or more consecutive residues without any outlier are shown as a green connector. Residues present in the sample, but not in the model, are shown in grey.

- Molecule 1: HLA class I histocompatibility antigen, A alpha chain



- Molecule 2: Beta-2-microglobulin

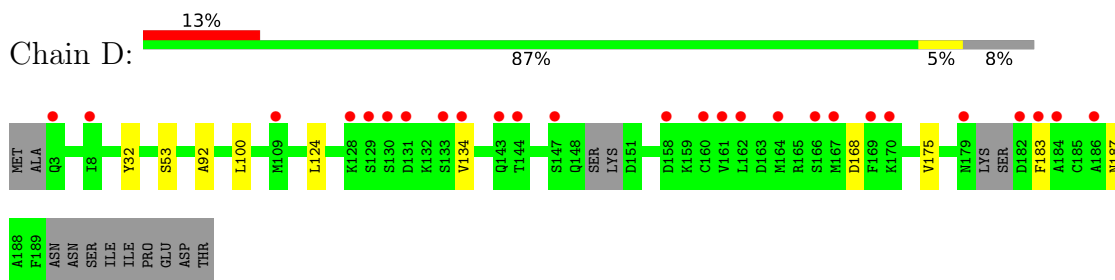


- Molecule 3: ELFSYLIEK peptide



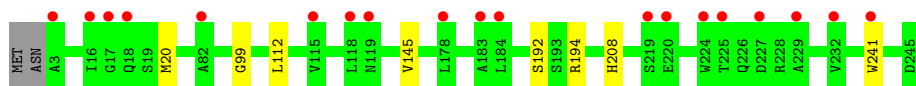
There are no outlier residues recorded for this chain.

- Molecule 4: TCR alpha



- Molecule 5: TCR beta





4 Data and refinement statistics

Property	Value	Source
Space group	P 1 21 1	Depositor
Cell constants a, b, c, α , β , γ	80.13Å 48.85Å 124.21Å 90.00° 92.84° 90.00°	Depositor
Resolution (Å)	68.82 – 2.05 68.82 – 2.05	Depositor EDS
% Data completeness (in resolution range)	99.4 (68.82-2.05) 99.4 (68.82-2.05)	Depositor EDS
R_{merge}	0.11	Depositor
R_{sym}	(Not available)	Depositor
$\langle I/\sigma(I) \rangle$ ¹	1.22 (at 2.05Å)	Xtrriage
Refinement program	REFMAC 5.8.0267	Depositor
R, R_{free}	0.219 , 0.244 0.227 , 0.250	Depositor DCC
R_{free} test set	2973 reflections (4.91%)	wwPDB-VP
Wilson B-factor (Å ²)	38.1	Xtrriage
Anisotropy	0.383	Xtrriage
Bulk solvent k_{sol} (e/Å ³), B_{sol} (Å ²)	0.33 , 29.3	EDS
L-test for twinning ²	$\langle L \rangle = 0.49$, $\langle L^2 \rangle = 0.33$	Xtrriage
Estimated twinning fraction	0.023 for h,-k,-l	Xtrriage
F_o, F_c correlation	0.94	EDS
Total number of atoms	6756	wwPDB-VP
Average B, all atoms (Å ²)	49.0	wwPDB-VP

Xtrriage's analysis on translational NCS is as follows: *The largest off-origin peak in the Patterson function is 5.68% of the height of the origin peak. No significant pseudotranslation is detected.*

¹Intensities estimated from amplitudes.

²Theoretical values of $\langle |L| \rangle$, $\langle L^2 \rangle$ for acentric reflections are 0.5, 0.333 respectively for untwinned datasets, and 0.375, 0.2 for perfectly twinned datasets.

5 Model quality [i](#)

5.1 Standard geometry [i](#)

Bond lengths and bond angles in the following residue types are not validated in this section: TOE, EDO, PO4

The Z score for a bond length (or angle) is the number of standard deviations the observed value is removed from the expected value. A bond length (or angle) with $|Z| > 5$ is considered an outlier worth inspection. RMSZ is the root-mean-square of all Z scores of the bond lengths (or angles).

Mol	Chain	Bond lengths		Bond angles	
		RMSZ	# Z >5	RMSZ	# Z >5
1	A	0.62	0/2297	0.71	0/3118
2	B	0.61	0/852	0.71	0/1152
3	C	0.62	0/82	0.71	0/107
4	D	0.66	0/1440	0.73	0/1950
5	E	0.64	0/1976	0.72	0/2692
All	All	0.64	0/6647	0.72	0/9019

There are no bond length outliers.

There are no bond angle outliers.

There are no chirality outliers.

There are no planarity outliers.

5.2 Too-close contacts [i](#)

In the following table, the Non-H and H(model) columns list the number of non-hydrogen atoms and hydrogen atoms in the chain respectively. The H(added) column lists the number of hydrogen atoms added and optimized by MolProbity. The Clashes column lists the number of clashes within the asymmetric unit, whereas Symm-Clashes lists symmetry-related clashes.

Mol	Chain	Non-H	H(model)	H(added)	Clashes	Symm-Clashes
1	A	2237	0	2086	4	0
2	B	829	0	794	5	0
3	C	81	0	83	0	0
4	D	1413	0	1363	6	0
5	E	1923	0	1825	7	0
6	A	11	0	16	0	0
7	B	4	0	6	0	0
7	D	4	0	6	0	0

Continued on next page...

Continued from previous page...

Mol	Chain	Non-H	H(model)	H(added)	Clashes	Symm-Clashes
8	B	5	0	0	0	0
9	A	106	0	0	0	0
9	B	38	0	0	0	0
9	C	8	0	0	0	0
9	D	37	0	0	0	0
9	E	60	0	0	0	0
All	All	6756	0	6179	17	0

The all-atom clashscore is defined as the number of clashes found per 1000 atoms (including hydrogen atoms). The all-atom clashscore for this structure is 1.

All (17) close contacts within the same asymmetric unit are listed below, sorted by their clash magnitude.

Atom-1	Atom-2	Interatomic distance (Å)	Clash overlap (Å)
5:E:20:MET:HE1	5:E:112:LEU:HD13	1.89	0.53
5:E:208:HIS:HB2	5:E:241:TRP:CZ3	2.51	0.45
5:E:20:MET:CE	5:E:112:LEU:HD13	2.47	0.45
4:D:32:TYR:CG	5:E:99:GLY:HA2	2.53	0.44
5:E:192:SER:OG	5:E:194:ARG:NH1	2.50	0.44
4:D:134:VAL:HG13	4:D:175:VAL:HG13	1.99	0.44
1:A:32:GLN:NE2	2:B:53:ASP:OD2	2.47	0.43
4:D:134:VAL:HG11	5:E:145:VAL:HG11	2.01	0.43
1:A:117:ALA:HB2	2:B:60:TRP:CE2	2.55	0.42
1:A:231:VAL:CG1	1:A:244:TRP:CZ2	3.03	0.41
4:D:92:ALA:HB1	4:D:100:LEU:HD11	2.02	0.41
2:B:51:HIS:HA	2:B:65:LEU:O	2.19	0.41
2:B:39:LEU:HD13	2:B:68:THR:HG22	2.02	0.41
1:A:155:GLN:NE2	4:D:53:SER:OG	2.53	0.40
2:B:2:GLN:HB3	2:B:86:THR:HG22	2.02	0.40
4:D:124:LEU:HD12	4:D:124:LEU:N	2.37	0.40
5:E:208:HIS:ND1	5:E:241:TRP:CE2	2.89	0.40

There are no symmetry-related clashes.

5.3 Torsion angles [i](#)

5.3.1 Protein backbone [i](#)

In the following table, the Percentiles column shows the percent Ramachandran outliers of the chain as a percentile score with respect to all X-ray entries followed by that with respect to entries of similar resolution.

The Analysed column shows the number of residues for which the backbone conformation was analysed, and the total number of residues.

Mol	Chain	Analysed	Favoured	Allowed	Outliers	Percentiles	
1	A	273/276 (99%)	270 (99%)	3 (1%)	0	100	100
2	B	97/100 (97%)	96 (99%)	1 (1%)	0	100	100
3	C	7/9 (78%)	7 (100%)	0	0	100	100
4	D	178/198 (90%)	169 (95%)	9 (5%)	0	100	100
5	E	241/245 (98%)	237 (98%)	4 (2%)	0	100	100
All	All	796/828 (96%)	779 (98%)	17 (2%)	0	100	100

There are no Ramachandran outliers to report.

5.3.2 Protein sidechains [i](#)

In the following table, the Percentiles column shows the percent sidechain outliers of the chain as a percentile score with respect to all X-ray entries followed by that with respect to entries of similar resolution.

The Analysed column shows the number of residues for which the sidechain conformation was analysed, and the total number of residues.

Mol	Chain	Analysed	Rotameric	Outliers	Percentiles	
1	A	232/233 (100%)	229 (99%)	3 (1%)	65	66
2	B	94/95 (99%)	92 (98%)	2 (2%)	48	45
3	C	9/9 (100%)	9 (100%)	0	100	100
4	D	160/173 (92%)	157 (98%)	3 (2%)	52	50
5	E	209/211 (99%)	209 (100%)	0	100	100
All	All	704/721 (98%)	696 (99%)	8 (1%)	70	71

All (8) residues with a non-rotameric sidechain are listed below:

Mol	Chain	Res	Type
1	A	35	ARG
1	A	116	ASP
1	A	186	LYS
2	B	1	ILE
2	B	70	PHE
4	D	168	ASP
4	D	183	PHE

Continued on next page...

Continued from previous page...

Mol	Chain	Res	Type
4	D	187	ASN

Sometimes sidechains can be flipped to improve hydrogen bonding and reduce clashes. All (3) such sidechains are listed below:

Mol	Chain	Res	Type
1	A	66	ASN
1	A	155	GLN
1	A	260	HIS

5.3.3 RNA [i](#)

There are no RNA molecules in this entry.

5.4 Non-standard residues in protein, DNA, RNA chains [i](#)

There are no non-standard protein/DNA/RNA residues in this entry.

5.5 Carbohydrates [i](#)

There are no oligosaccharides in this entry.

5.6 Ligand geometry [i](#)

4 ligands are modelled in this entry.

In the following table, the Counts columns list the number of bonds (or angles) for which Mogul statistics could be retrieved, the number of bonds (or angles) that are observed in the model and the number of bonds (or angles) that are defined in the Chemical Component Dictionary. The Link column lists molecule types, if any, to which the group is linked. The Z score for a bond length (or angle) is the number of standard deviations the observed value is removed from the expected value. A bond length (or angle) with $|Z| > 2$ is considered an outlier worth inspection. RMSZ is the root-mean-square of all Z scores of the bond lengths (or angles).

Mol	Type	Chain	Res	Link	Bond lengths			Bond angles		
					Counts	RMSZ	$\# Z > 2$	Counts	RMSZ	$\# Z > 2$
6	TOE	A	301	-	10,10,10	0.19	0	9,9,9	0.17	0
8	PO4	B	302	-	4,4,4	0.66	0	6,6,6	0.44	0
7	EDO	B	301	-	3,3,3	0.06	0	2,2,2	0.24	0
7	EDO	D	201	-	3,3,3	0.06	0	2,2,2	0.14	0

In the following table, the Chirals column lists the number of chiral outliers, the number of chiral centers analysed, the number of these observed in the model and the number defined in the Chemical Component Dictionary. Similar counts are reported in the Torsion and Rings columns. '-' means no outliers of that kind were identified.

Mol	Type	Chain	Res	Link	Chirals	Torsions	Rings
6	TOE	A	301	-	-	3/8/8/8	-
7	EDO	B	301	-	-	1/1/1/1	-
7	EDO	D	201	-	-	1/1/1/1	-

There are no bond length outliers.

There are no bond angle outliers.

There are no chirality outliers.

All (5) torsion outliers are listed below:

Mol	Chain	Res	Type	Atoms
7	B	301	EDO	O1-C1-C2-O2
6	A	301	TOE	CH ¹ -CG ¹ -OF ¹ -CE ¹
6	A	301	TOE	O2 ¹ -CA ¹ -CB ¹ -OC ¹
6	A	301	TOE	CE ¹ -CD ¹ -OC ¹ -CB ¹
7	D	201	EDO	O1-C1-C2-O2

There are no ring outliers.

No monomer is involved in short contacts.

5.7 Other polymers [i](#)

There are no such residues in this entry.

5.8 Polymer linkage issues [i](#)

There are no chain breaks in this entry.

6 Fit of model and data

6.1 Protein, DNA and RNA chains

In the following table, the column labelled ‘#RSRZ > 2’ contains the number (and percentage) of RSRZ outliers, followed by percent RSRZ outliers for the chain as percentile scores relative to all X-ray entries and entries of similar resolution. The OWAB column contains the minimum, median, 95th percentile and maximum values of the occupancy-weighted average B-factor per residue. The column labelled ‘Q < 0.9’ lists the number of (and percentage) of residues with an average occupancy less than 0.9.

Mol	Chain	Analysed	<RSRZ>	#RSRZ>2	OWAB(Å ²)	Q<0.9
1	A	275/276 (99%)	0.59	30 (10%) 12 12	27, 40, 89, 96	0
2	B	99/100 (99%)	0.44	2 (2%) 64 68	30, 42, 62, 72	0
3	C	9/9 (100%)	-0.34	0 100 100	31, 32, 37, 40	0
4	D	183/198 (92%)	1.00	26 (14%) 7 7	31, 52, 85, 99	1 (0%)
5	E	243/245 (99%)	0.76	19 (7%) 20 22	33, 50, 82, 102	0
All	All	809/828 (97%)	0.70	77 (9%) 15 16	27, 46, 84, 102	1 (0%)

All (77) RSRZ outliers are listed below:

Mol	Chain	Res	Type	RSRZ
4	D	164[A]	MET	5.1
4	D	129	SER	4.8
2	B	1	ILE	4.5
5	E	3	ALA	4.4
5	E	118	LEU	4.2
1	A	249	VAL	3.9
5	E	16	ILE	3.6
1	A	248	VAL	3.5
1	A	251	SER	3.4
4	D	169	PHE	3.3
5	E	229	ALA	3.2
1	A	197	HIS	3.0
1	A	193	PRO	2.9
1	A	255	GLN	2.9
5	E	119	ASN	2.8
4	D	166	SER	2.8
1	A	194	ILE	2.8
4	D	109	MET	2.7
4	D	182	ASP	2.7
5	E	184	LEU	2.7

Continued on next page...

Continued from previous page...

Mol	Chain	Res	Type	RSRZ
4	D	161	VAL	2.7
4	D	8	ILE	2.7
1	A	216	THR	2.7
5	E	224	TRP	2.7
1	A	138	MET	2.6
5	E	115	VAL	2.6
1	A	220	ASP	2.6
4	D	179	ASN	2.6
1	A	226	GLN	2.6
4	D	162	LEU	2.6
1	A	257	TYR	2.6
4	D	3	GLN	2.6
1	A	252	GLY	2.5
1	A	230	LEU	2.5
4	D	128	LYS	2.5
4	D	186	ALA	2.5
1	A	250	PRO	2.5
4	D	184	ALA	2.5
1	A	273	ARG	2.5
1	A	256	ARG	2.5
5	E	18	GLN	2.5
5	E	232	VAL	2.5
1	A	269	PRO	2.4
4	D	131	ASP	2.4
5	E	183	ALA	2.4
5	E	220	GLU	2.4
1	A	221	GLY	2.4
1	A	231	VAL	2.3
1	A	274	TRP	2.3
4	D	158	ASP	2.3
1	A	199	ALA	2.3
1	A	223	ASP	2.3
4	D	183	PHE	2.3
4	D	130	SER	2.3
1	A	86	ASN	2.2
5	E	241	TRP	2.2
1	A	121	LYS	2.2
5	E	17	GLY	2.2
5	E	178	LEU	2.2
4	D	147	SER	2.2
1	A	196	ASP	2.1
4	D	160	CYS	2.1

Continued on next page...

Continued from previous page...

Mol	Chain	Res	Type	RSRZ
4	D	134	VAL	2.1
1	A	225	THR	2.1
4	D	133	SER	2.1
5	E	219	SER	2.1
1	A	2	SER	2.1
4	D	144	THR	2.1
5	E	225	THR	2.1
1	A	90	ALA	2.1
4	D	143	GLN	2.1
4	D	167	MET	2.1
4	D	170	LYS	2.1
5	E	82	ALA	2.0
5	E	227	ASP	2.0
2	B	88	SER	2.0
1	A	266	LEU	2.0

6.2 Non-standard residues in protein, DNA, RNA chains [i](#)

There are no non-standard protein/DNA/RNA residues in this entry.

6.3 Carbohydrates [i](#)

There are no monosaccharides in this entry.

6.4 Ligands [i](#)

In the following table, the Atoms column lists the number of modelled atoms in the group and the number defined in the chemical component dictionary. The B-factors column lists the minimum, median, 95th percentile and maximum values of B factors of atoms in the group. The column labelled 'Q < 0.9' lists the number of atoms with occupancy less than 0.9.

Mol	Type	Chain	Res	Atoms	RSCC	RSR	B-factors(Å ²)	Q < 0.9
7	EDO	D	201	4/4	0.73	0.19	45,45,46,47	0
6	TOE	A	301	11/11	0.82	0.21	60,63,66,66	0
7	EDO	B	301	4/4	0.86	0.18	48,51,52,55	0
8	PO4	B	302	5/5	0.87	0.10	73,73,77,83	0

6.5 Other polymers [i](#)

There are no such residues in this entry.