



# Full wwPDB X-ray Structure Validation Report ⓘ

Feb 10, 2025 – 01:10 pm GMT

PDB ID : 8RXV  
Title : TEAD2 with an inhibitor  
Authors : Guichou, J.F.; Gelin, M.; Allemand, F.  
Deposited on : 2024-02-08  
Resolution : 2.05 Å(reported)

This is a Full wwPDB X-ray Structure Validation Report for a publicly released PDB entry.

We welcome your comments at [validation@mail.wwpdb.org](mailto:validation@mail.wwpdb.org)

A user guide is available at

<https://www.wwpdb.org/validation/2017/XrayValidationReportHelp>

with specific help available everywhere you see the ⓘ symbol.

The types of validation reports are described at

<http://www.wwpdb.org/validation/2017/FAQs#types>.

---

The following versions of software and data (see [references ⓘ](#)) were used in the production of this report:

MolProbity : 4.02b-467  
Mogul : 1.8.4, CSD as541be (2020)  
Xtriage (Phenix) : 1.13  
EDS : 3.0  
buster-report : 1.1.7 (2018)  
Percentile statistics : 20231227.v01 (using entries in the PDB archive December 27th 2023)  
CCP4 : 9.0.003 (Gargrove)  
Density-Fitness : 1.0.11  
Ideal geometry (proteins) : Engh & Huber (2001)  
Ideal geometry (DNA, RNA) : Parkinson et al. (1996)  
Validation Pipeline (wwPDB-VP) : 2.40

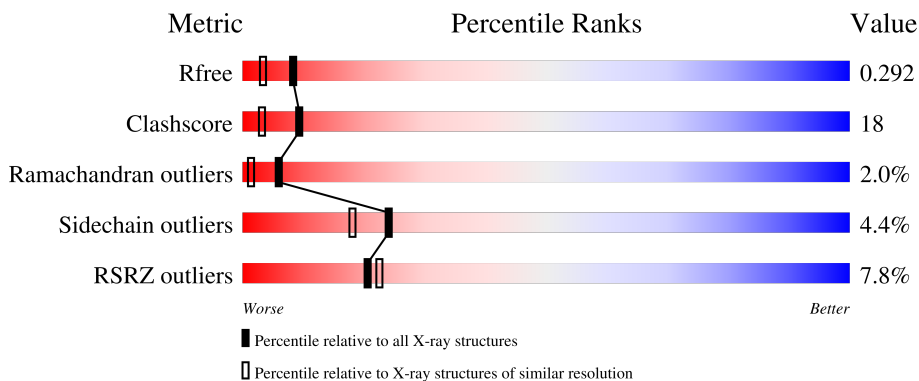
# 1 Overall quality at a glance

The following experimental techniques were used to determine the structure:

*X-RAY DIFFRACTION*

The reported resolution of this entry is 2.05 Å.

Percentile scores (ranging between 0-100) for global validation metrics of the entry are shown in the following graphic. The table shows the number of entries on which the scores are based.



Metric	Whole archive (#Entries)	Similar resolution (#Entries, resolution range(Å))
$R_{free}$	164625	2096 (2.04-2.04)
Clashscore	180529	2229 (2.04-2.04)
Ramachandran outliers	177936	2217 (2.04-2.04)
Sidechain outliers	177891	2217 (2.04-2.04)
RSRZ outliers	164620	2096 (2.04-2.04)

The table below summarises the geometric issues observed across the polymeric chains and their fit to the electron density. The red, orange, yellow and green segments of the lower bar indicate the fraction of residues that contain outliers for  $\geq 3$ , 2, 1 and 0 types of geometric quality criteria respectively. A grey segment represents the fraction of residues that are not modelled. The numeric value for each fraction is indicated below the corresponding segment, with a dot representing fractions  $\leq 5\%$ . The upper red bar (where present) indicates the fraction of residues that have poor fit to the electron density. The numeric value is given above the bar.

Mol	Chain	Length	Quality of chain
1	A	240	 8% 55% 28% 17%
1	B	240	 6% 56% 29% 13%

## 2 Entry composition i

There are 3 unique types of molecules in this entry. The entry contains 3416 atoms, of which 20 are hydrogens and 0 are deuteriums.

In the tables below, the ZeroOcc column contains the number of atoms modelled with zero occupancy, the AltConf column contains the number of residues with at least one atom in alternate conformation and the Trace column contains the number of residues modelled with at most 2 atoms.

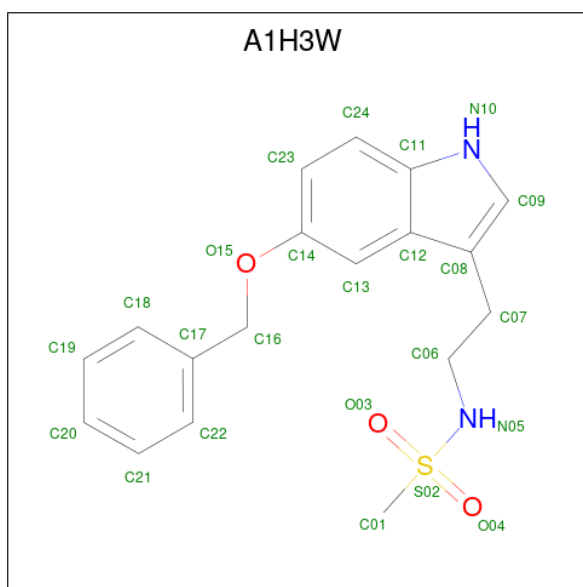
- Molecule 1 is a protein called Transcriptional enhancer factor TEF-4.

Mol	Chain	Residues	Atoms					ZeroOcc	AltConf	Trace
			Total	C	N	O	S			
1	A	199	Total 1629	C 1044	N 281	O 296	S 8	0	1	0
1	B	209	Total 1715	C 1097	N 299	O 310	S 9	0	2	0

There are 18 discrepancies between the modelled and reference sequences:

Chain	Residue	Modelled	Actual	Comment	Reference
A	216	MET	-	initiating methionine	UNP Q15562
A	448	VAL	-	expression tag	UNP Q15562
A	449	GLU	-	expression tag	UNP Q15562
A	450	HIS	-	expression tag	UNP Q15562
A	451	HIS	-	expression tag	UNP Q15562
A	452	HIS	-	expression tag	UNP Q15562
A	453	HIS	-	expression tag	UNP Q15562
A	454	HIS	-	expression tag	UNP Q15562
A	455	HIS	-	expression tag	UNP Q15562
B	216	MET	-	initiating methionine	UNP Q15562
B	448	VAL	-	expression tag	UNP Q15562
B	449	GLU	-	expression tag	UNP Q15562
B	450	HIS	-	expression tag	UNP Q15562
B	451	HIS	-	expression tag	UNP Q15562
B	452	HIS	-	expression tag	UNP Q15562
B	453	HIS	-	expression tag	UNP Q15562
B	454	HIS	-	expression tag	UNP Q15562
B	455	HIS	-	expression tag	UNP Q15562

- Molecule 2 is {N}-[2-(5-phenylmethoxy-1 {H}-indol-3-yl)ethyl]methanesulfonamide (three-letter code: A1H3W) (formula: C<sub>18</sub>H<sub>20</sub>N<sub>2</sub>O<sub>3</sub>S) (labeled as "Ligand of Interest" by depositor).



Mol	Chain	Residues	Atoms					ZeroOcc	AltConf	
2	A	1	Total	C	H	N	O	S	0	0
			44	18	20	2	3	1		
2	B	1	Total	C	N	O	S	0	0	
			24	18	2	3	1			

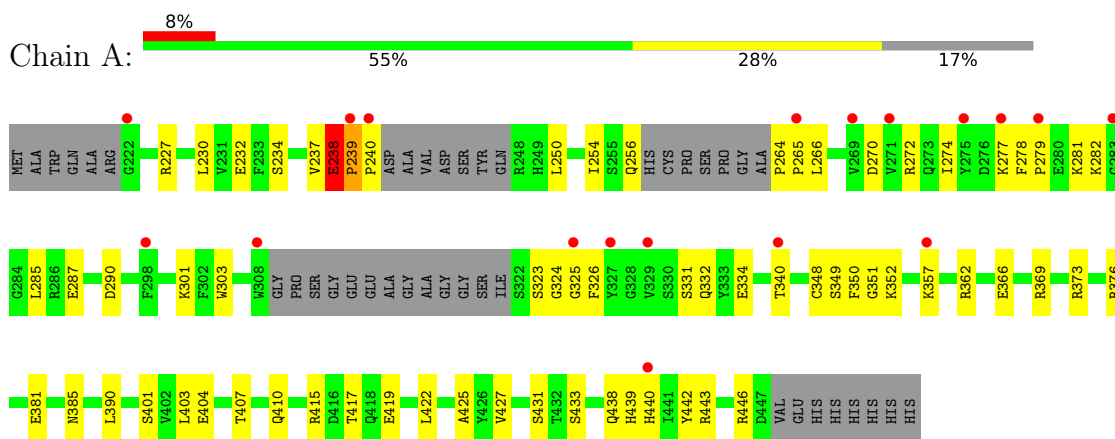
- Molecule 3 is water.

Mol	Chain	Residues	Atoms		ZeroOcc	AltConf
3	B	4	Total	O	0	0
			4	4		

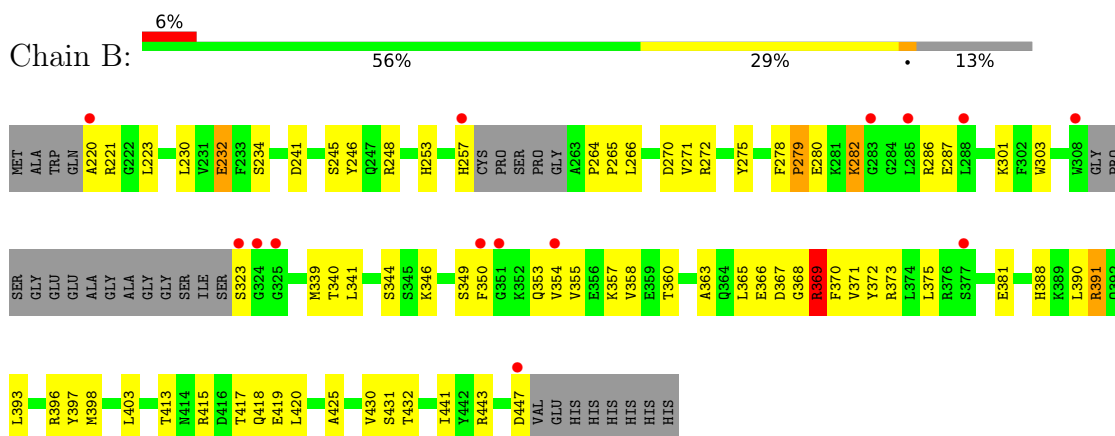
### 3 Residue-property plots [i](#)

These plots are drawn for all protein, RNA, DNA and oligosaccharide chains in the entry. The first graphic for a chain summarises the proportions of the various outlier classes displayed in the second graphic. The second graphic shows the sequence view annotated by issues in geometry and electron density. Residues are color-coded according to the number of geometric quality criteria for which they contain at least one outlier: green = 0, yellow = 1, orange = 2 and red = 3 or more. A red dot above a residue indicates a poor fit to the electron density ( $RSRZ > 2$ ). Stretches of 2 or more consecutive residues without any outlier are shown as a green connector. Residues present in the sample, but not in the model, are shown in grey.

- Molecule 1: Transcriptional enhancer factor TEF-4



- Molecule 1: Transcriptional enhancer factor TEF-4



## 4 Data and refinement statistics

Property	Value	Source
Space group	C 1 2 1	Depositor
Cell constants a, b, c, $\alpha$ , $\beta$ , $\gamma$	114.29Å 61.39Å 80.04Å 90.00° 111.37° 90.00°	Depositor
Resolution (Å)	47.58 – 2.05 47.58 – 2.05	Depositor EDS
% Data completeness (in resolution range)	94.7 (47.58-2.05) 95.2 (47.58-2.05)	Depositor EDS
$R_{merge}$	(Not available)	Depositor
$R_{sym}$	(Not available)	Depositor
$\langle I/\sigma(I) \rangle$ <sup>1</sup>	0.95 (at 1.90Å)	Xtrriage
Refinement program	PHENIX (1.20.1_4487: ???)	Depositor
R, $R_{free}$	0.248 , 0.297 0.249 , 0.292	Depositor DCC
$R_{free}$ test set	1186 reflections (3.02%)	wwPDB-VP
Wilson B-factor (Å <sup>2</sup> )	54.1	Xtrriage
Anisotropy	0.255	Xtrriage
Bulk solvent $k_{sol}$ (e/Å <sup>3</sup> ), $B_{sol}$ (Å <sup>2</sup> )	0.36 , 52.5	EDS
L-test for twinning <sup>2</sup>	$\langle  L  \rangle = 0.49$ , $\langle L^2 \rangle = 0.33$	Xtrriage
Estimated twinning fraction	No twinning to report.	Xtrriage
$F_o, F_c$ correlation	0.95	EDS
Total number of atoms	3416	wwPDB-VP
Average B, all atoms (Å <sup>2</sup> )	77.0	wwPDB-VP

Xtrriage's analysis on translational NCS is as follows: *The largest off-origin peak in the Patterson function is 6.93% of the height of the origin peak. No significant pseudotranslation is detected.*

<sup>1</sup>Intensities estimated from amplitudes.

<sup>2</sup>Theoretical values of  $\langle |L| \rangle$ ,  $\langle L^2 \rangle$  for acentric reflections are 0.5, 0.333 respectively for untwinned datasets, and 0.375, 0.2 for perfectly twinned datasets.

## 5 Model quality [i](#)

### 5.1 Standard geometry [i](#)

Bond lengths and bond angles in the following residue types are not validated in this section: A1H3W

The Z score for a bond length (or angle) is the number of standard deviations the observed value is removed from the expected value. A bond length (or angle) with  $|Z| > 5$  is considered an outlier worth inspection. RMSZ is the root-mean-square of all Z scores of the bond lengths (or angles).

Mol	Chain	Bond lengths		Bond angles	
		RMSZ	# Z  >5	RMSZ	# Z  >5
1	A	0.53	0/1668	0.70	1/2254 (0.0%)
1	B	0.46	0/1762	0.69	0/2382
All	All	0.49	0/3430	0.69	1/4636 (0.0%)

There are no bond length outliers.

All (1) bond angle outliers are listed below:

Mol	Chain	Res	Type	Atoms	Z	Observed(°)	Ideal(°)
1	A	264	PRO	C-N-CD	6.01	141.02	128.40

There are no chirality outliers.

There are no planarity outliers.

### 5.2 Too-close contacts [i](#)

In the following table, the Non-H and H(model) columns list the number of non-hydrogen atoms and hydrogen atoms in the chain respectively. The H(added) column lists the number of hydrogen atoms added and optimized by MolProbity. The Clashes column lists the number of clashes within the asymmetric unit, whereas Symm-Clashes lists symmetry-related clashes.

Mol	Chain	Non-H	H(model)	H(added)	Clashes	Symm-Clashes
1	A	1629	0	1580	61	0
1	B	1715	0	1665	60	0
2	A	24	20	0	2	0
2	B	24	0	0	1	0
3	B	4	0	0	0	0
All	All	3396	20	3245	118	0

The all-atom clashscore is defined as the number of clashes found per 1000 atoms (including

hydrogen atoms). The all-atom clashscore for this structure is 18.

All (118) close contacts within the same asymmetric unit are listed below, sorted by their clash magnitude.

Atom-1	Atom-2	Interatomic distance (Å)	Clash overlap (Å)
1:A:238:GLU:HB3	1:A:239:PRO:CA	1.67	1.16
1:A:238:GLU:HB3	1:A:239:PRO:HA	1.32	1.04
1:B:220:ALA:HB3	1:B:443:ARG:HD3	1.49	0.94
1:B:271:VAL:HG22	1:B:275:TYR:HE1	1.32	0.94
1:A:238:GLU:HB3	1:A:239:PRO:C	1.88	0.93
1:B:391:ARG:HH21	1:B:391:ARG:HG2	1.31	0.93
1:B:365:LEU:HG	1:B:370:PHE:HE1	1.36	0.90
1:A:238:GLU:CB	1:A:239:PRO:HA	2.05	0.87
1:B:396:ARG:HH11	1:B:432:THR:HG22	1.39	0.87
1:A:357:LYS:HD3	2:A:501:A1H3W:O03	1.75	0.86
1:B:365:LEU:HG	1:B:370:PHE:CE1	2.11	0.85
1:B:271:VAL:HG22	1:B:275:TYR:CE1	2.15	0.81
1:B:396:ARG:NH1	1:B:432:THR:HG22	1.96	0.81
1:A:239:PRO:HB2	1:A:240:PRO:HD3	1.63	0.79
1:A:239:PRO:HB2	1:A:240:PRO:CD	2.12	0.79
1:A:357:LYS:HG3	1:B:358:VAL:HB	1.66	0.78
1:A:376:ARG:HH11	1:A:376:ARG:HB2	1.48	0.77
1:B:391:ARG:HG2	1:B:391:ARG:NH2	1.98	0.77
1:A:238:GLU:HB2	1:A:326:PHE:HB3	1.70	0.74
1:A:238:GLU:CB	1:A:239:PRO:CA	2.54	0.74
1:B:363:ALA:HB1	1:B:370:PHE:HB3	1.71	0.73
1:B:278:PHE:HB3	1:B:279:PRO:HD2	1.70	0.72
1:B:396:ARG:HG2	1:B:430:VAL:CG2	2.20	0.71
1:B:396:ARG:HG2	1:B:430:VAL:HG21	1.72	0.71
1:A:381:GLU:OE1	1:B:346:LYS:HE3	1.91	0.70
1:B:232:GLU:OE1	1:B:257[A]:HIS:HE1	1.75	0.69
1:A:270:ASP:OD1	1:A:272:ARG:HG3	1.93	0.68
1:A:282:LYS:HA	1:A:287:GLU:OE2	1.94	0.67
1:B:346:LYS:HD3	1:B:353:GLN:OE1	1.95	0.66
1:A:381:GLU:HG3	1:A:385:ASN:HD21	1.61	0.66
1:A:417:THR:OG1	1:A:419:GLU:HG2	1.96	0.65
1:A:332:GLN:HG3	1:A:373:ARG:HG2	1.76	0.65
1:B:234:SER:HB3	1:B:253:HIS:HD2	1.61	0.65
1:A:357:LYS:CD	2:A:501:A1H3W:O03	2.44	0.64
1:A:237:VAL:HA	1:A:326:PHE:O	1.97	0.64
1:A:376:ARG:HB2	1:A:376:ARG:NH1	2.13	0.63
1:A:238:GLU:HB3	1:A:239:PRO:O	1.98	0.63
1:A:239:PRO:CB	1:A:325:GLY:HA2	2.29	0.63

*Continued on next page...*



*Continued from previous page...*

Atom-1	Atom-2	Interatomic distance (Å)	Clash overlap (Å)
1:A:349:SER:O	1:A:352:LYS:HG3	2.01	0.61
1:B:278:PHE:HB3	1:B:279:PRO:CD	2.31	0.60
1:A:277:LYS:HB3	1:A:407:THR:HG21	1.83	0.60
1:B:272:ARG:HG2	1:B:272:ARG:HH11	1.65	0.60
1:B:390:LEU:HD12	1:B:393:LEU:HD22	1.84	0.59
1:A:401:SER:O	1:A:404:GLU:HG2	2.03	0.59
1:B:391:ARG:HH21	1:B:391:ARG:CG	2.07	0.58
1:B:275:TYR:CE2	1:B:286:ARG:HG3	2.39	0.57
1:B:368:GLY:O	1:B:369:ARG:HB2	2.05	0.57
1:A:301:LYS:HG3	1:A:427:VAL:HG23	1.87	0.56
1:A:334:GLU:OE1	1:A:369:ARG:NH2	2.39	0.55
1:A:234:SER:HB2	1:A:250:LEU:HD22	1.89	0.54
1:A:381:GLU:CG	1:A:385:ASN:HD21	2.21	0.54
1:B:220:ALA:CB	1:B:443:ARG:HD3	2.30	0.54
1:A:239:PRO:HB2	1:A:325:GLY:HA2	1.89	0.53
1:B:339:MET:HE3	1:B:341:LEU:HD21	1.91	0.53
1:A:230:LEU:O	1:A:256:GLN:NE2	2.42	0.53
1:A:340:THR:OG1	1:A:415:ARG:HB3	2.09	0.52
1:B:357:LYS:HD3	2:B:501:A1H3W:C01	2.39	0.52
1:B:341:LEU:O	1:B:360:THR:HA	2.09	0.52
1:A:238:GLU:CG	1:A:239:PRO:O	2.58	0.51
1:A:390:LEU:HD21	1:A:403:LEU:HD21	1.93	0.51
1:A:238:GLU:HG2	1:A:239:PRO:O	2.11	0.50
1:B:323:SER:N	1:B:388:HIS:HE2	2.09	0.50
1:B:272:ARG:HH11	1:B:272:ARG:CG	2.23	0.50
1:A:281:LYS:CB	1:B:381:GLU:OE1	2.60	0.50
1:B:371:VAL:HG21	1:B:373:ARG:NH1	2.26	0.49
1:A:334:GLU:OE1	1:A:369:ARG:CZ	2.60	0.49
1:A:350:PHE:O	1:A:352:LYS:N	2.42	0.49
1:B:373:ARG:HD3	1:B:375:LEU:HD11	1.95	0.49
1:B:220:ALA:HB3	1:B:443:ARG:CD	2.31	0.48
1:B:275:TYR:CD2	1:B:286:ARG:HG3	2.49	0.48
1:B:278:PHE:CZ	1:B:425:ALA:HB1	2.48	0.47
1:A:340:THR:HG21	1:A:362:ARG:NH1	2.29	0.47
1:B:366:GLU:O	1:B:367:ASP:HB3	2.13	0.47
1:A:239:PRO:HB3	1:A:325:GLY:HA2	1.97	0.47
1:A:279:PRO:C	1:A:281:LYS:H	2.18	0.47
1:B:270:ASP:OD1	1:B:272:ARG:N	2.45	0.47
1:B:303:TRP:HB3	1:B:431:SER:HB2	1.97	0.47
1:A:238:GLU:CB	1:A:239:PRO:O	2.63	0.46
1:B:354:VAL:HG23	1:B:355:VAL:HG23	1.98	0.46

*Continued on next page...*

*Continued from previous page...*

Atom-1	Atom-2	Interatomic distance (Å)	Clash overlap (Å)
1:B:366:GLU:OE1	1:B:373:ARG:NH2	2.44	0.46
1:A:422:LEU:HD23	1:A:422:LEU:HA	1.59	0.46
1:A:366:GLU:CD	1:A:373:ARG:HH22	2.20	0.45
1:B:246:TYR:OH	1:B:248:ARG:HD2	2.16	0.45
1:A:376:ARG:O	1:A:376:ARG:HG2	2.17	0.45
1:B:232:GLU:OE1	1:B:257[A]:HIS:CE1	2.63	0.45
1:A:274:ILE:HG13	1:A:285:LEU:HD23	1.99	0.44
1:A:279:PRO:HD3	1:A:348:CYS:SG	2.57	0.44
1:B:349:SER:O	1:B:350:PHE:HB2	2.17	0.44
1:B:223:LEU:HD13	1:B:230:LEU:HD22	2.00	0.44
1:B:301:LYS:HE2	1:B:303:TRP:CZ2	2.53	0.43
1:B:417:THR:OG1	1:B:419:GLU:HG3	2.18	0.43
1:A:340:THR:CG2	1:A:362:ARG:NH1	2.82	0.43
1:B:234:SER:HB3	1:B:253:HIS:CD2	2.46	0.43
1:A:272:ARG:NH2	1:A:446:ARG:O	2.52	0.43
1:A:440[B]:HIS:CG	1:A:442:TYR:HH	2.37	0.43
1:B:397:TYR:CD1	1:B:397:TYR:C	2.93	0.42
1:A:350:PHE:C	1:A:352:LYS:H	2.22	0.42
1:B:340:THR:HG22	1:B:415:ARG:HB3	2.00	0.42
1:A:303:TRP:HB3	1:A:431:SER:HB2	2.01	0.42
1:B:391:ARG:O	1:B:391:ARG:HG3	2.19	0.42
1:A:232:GLU:HA	1:A:254:ILE:O	2.19	0.42
1:A:239:PRO:HA	1:A:326:PHE:H	1.85	0.42
1:B:341:LEU:HG	1:B:372:TYR:CE2	2.55	0.42
1:B:371:VAL:CG2	1:B:373:ARG:NH1	2.83	0.42
1:A:239:PRO:HB3	1:A:325:GLY:CA	2.49	0.41
1:B:221:ARG:HD3	1:B:265:PRO:HA	2.01	0.41
1:A:239:PRO:CB	1:A:240:PRO:CD	2.93	0.41
1:B:280:GLU:C	1:B:282:LYS:H	2.23	0.41
1:A:227:ARG:HE	1:A:227:ARG:HB3	1.63	0.41
1:B:397:TYR:CE1	1:B:398:MET:HG3	2.55	0.41
1:B:417:THR:C	1:B:418:GLN:HG2	2.41	0.41
1:A:266:LEU:O	1:A:443:ARG:NH1	2.54	0.41
1:A:278:PHE:CZ	1:A:425:ALA:HB1	2.55	0.41
1:B:390:LEU:HD21	1:B:403:LEU:HD21	2.03	0.41
1:A:438:GLN:HG2	1:A:439:HIS:N	2.36	0.40
1:B:270:ASP:OD1	1:B:272:ARG:HB2	2.20	0.40
1:A:324:GLY:HA3	1:A:325:GLY:HA3	1.83	0.40
1:B:266:LEU:HD13	1:B:441:ILE:HG22	2.03	0.40

There are no symmetry-related clashes.

## 5.3 Torsion angles [i](#)

### 5.3.1 Protein backbone [i](#)

In the following table, the Percentiles column shows the percent Ramachandran outliers of the chain as a percentile score with respect to all X-ray entries followed by that with respect to entries of similar resolution.

The Analysed column shows the number of residues for which the backbone conformation was analysed, and the total number of residues.

Mol	Chain	Analysed	Favoured	Allowed	Outliers	Percentiles	
1	A	192/240 (80%)	181 (94%)	7 (4%)	4 (2%)	5	1
1	B	204/240 (85%)	186 (91%)	14 (7%)	4 (2%)	6	1
All	All	396/480 (82%)	367 (93%)	21 (5%)	8 (2%)	6	1

All (8) Ramachandran outliers are listed below:

Mol	Chain	Res	Type
1	A	238	GLU
1	A	265	PRO
1	B	282	LYS
1	B	369	ARG
1	B	279	PRO
1	A	351	GLY
1	B	264	PRO
1	A	239	PRO

### 5.3.2 Protein sidechains [i](#)

In the following table, the Percentiles column shows the percent sidechain outliers of the chain as a percentile score with respect to all X-ray entries followed by that with respect to entries of similar resolution.

The Analysed column shows the number of residues for which the sidechain conformation was analysed, and the total number of residues.

Mol	Chain	Analysed	Rotameric	Outliers	Percentiles	
1	A	179/210 (85%)	173 (97%)	6 (3%)	32	26
1	B	187/210 (89%)	177 (95%)	10 (5%)	19	12
All	All	366/420 (87%)	350 (96%)	16 (4%)	24	18

All (16) residues with a non-rotameric sidechain are listed below:

Mol	Chain	Res	Type
1	A	238	GLU
1	A	290	ASP
1	A	323	SER
1	A	331	SER
1	A	410	GLN
1	A	433	SER
1	B	232	GLU
1	B	241	ASP
1	B	245	SER
1	B	287	GLU
1	B	344	SER
1	B	369	ARG
1	B	391	ARG
1	B	413	THR
1	B	420	LEU
1	B	447	ASP

Sometimes sidechains can be flipped to improve hydrogen bonding and reduce clashes. All (5) such sidechains are listed below:

Mol	Chain	Res	Type
1	A	364	GLN
1	A	385	ASN
1	B	385	ASN
1	B	392	GLN
1	B	438	GLN

### 5.3.3 RNA [i](#)

There are no RNA molecules in this entry.

### 5.4 Non-standard residues in protein, DNA, RNA chains [i](#)

There are no non-standard protein/DNA/RNA residues in this entry.

### 5.5 Carbohydrates [i](#)

There are no oligosaccharides in this entry.

## 5.6 Ligand geometry

2 ligands are modelled in this entry.

In the following table, the Counts columns list the number of bonds (or angles) for which Mogul statistics could be retrieved, the number of bonds (or angles) that are observed in the model and the number of bonds (or angles) that are defined in the Chemical Component Dictionary. The Link column lists molecule types, if any, to which the group is linked. The Z score for a bond length (or angle) is the number of standard deviations the observed value is removed from the expected value. A bond length (or angle) with  $|Z| > 2$  is considered an outlier worth inspection. RMSZ is the root-mean-square of all Z scores of the bond lengths (or angles).

Mol	Type	Chain	Res	Link	Bond lengths			Bond angles		
					Counts	RMSZ	# Z  > 2	Counts	RMSZ	# Z  > 2
2	A1H3W	A	501	-	25,26,26	1.18	2 (8%)	29,36,36	2.72	9 (31%)
2	A1H3W	B	501	-	25,26,26	1.11	2 (8%)	29,36,36	1.97	5 (17%)

In the following table, the Chirals column lists the number of chiral outliers, the number of chiral centers analysed, the number of these observed in the model and the number defined in the Chemical Component Dictionary. Similar counts are reported in the Torsion and Rings columns. '-' means no outliers of that kind were identified.

Mol	Type	Chain	Res	Link	Chirals	Torsions	Rings
2	A1H3W	A	501	-	-	5/12/12/12	0/3/3/3
2	A1H3W	B	501	-	-	7/12/12/12	0/3/3/3

All (4) bond length outliers are listed below:

Mol	Chain	Res	Type	Atoms	Z	Observed(Å)	Ideal(Å)
2	A	501	A1H3W	C24-C11	-2.90	1.36	1.41
2	B	501	A1H3W	C01-S02	-2.30	1.70	1.75
2	A	501	A1H3W	C13-C14	2.07	1.40	1.37
2	B	501	A1H3W	C09-N10	2.04	1.40	1.36

All (14) bond angle outliers are listed below:

Mol	Chain	Res	Type	Atoms	Z	Observed(°)	Ideal(°)
2	A	501	A1H3W	C01-S02-N05	-10.97	101.04	107.76
2	B	501	A1H3W	C01-S02-N05	-7.87	102.94	107.76
2	A	501	A1H3W	O04-S02-N05	-3.97	101.64	107.31
2	A	501	A1H3W	O03-S02-N05	3.40	112.17	107.31
2	A	501	A1H3W	C07-C06-N05	2.85	115.25	110.82
2	B	501	A1H3W	C07-C06-N05	2.73	115.05	110.82
2	A	501	A1H3W	C07-C08-C09	-2.71	121.49	127.19

*Continued on next page...*

*Continued from previous page...*

Mol	Chain	Res	Type	Atoms	Z	Observed(°)	Ideal(°)
2	A	501	A1H3W	O04-S02-C01	2.68	112.59	108.28
2	B	501	A1H3W	O15-C16-C17	2.55	116.80	109.16
2	A	501	A1H3W	C23-C24-C11	-2.54	117.64	120.84
2	A	501	A1H3W	C24-C23-C14	2.43	123.43	120.17
2	B	501	A1H3W	O03-S02-N05	2.32	110.62	107.31
2	A	501	A1H3W	C16-O15-C14	-2.24	112.12	117.65
2	B	501	A1H3W	C07-C08-C09	-2.20	122.55	127.19

There are no chirality outliers.

All (12) torsion outliers are listed below:

Mol	Chain	Res	Type	Atoms
2	A	501	A1H3W	C06-C07-C08-C12
2	A	501	A1H3W	C06-N05-S02-C01
2	B	501	A1H3W	C06-C07-C08-C12
2	B	501	A1H3W	C06-N05-S02-C01
2	B	501	A1H3W	C06-N05-S02-O03
2	B	501	A1H3W	C06-N05-S02-O04
2	B	501	A1H3W	N05-C06-C07-C08
2	A	501	A1H3W	C17-C16-O15-C14
2	A	501	A1H3W	C06-N05-S02-O04
2	A	501	A1H3W	C06-C07-C08-C09
2	B	501	A1H3W	C06-C07-C08-C09
2	B	501	A1H3W	C17-C16-O15-C14

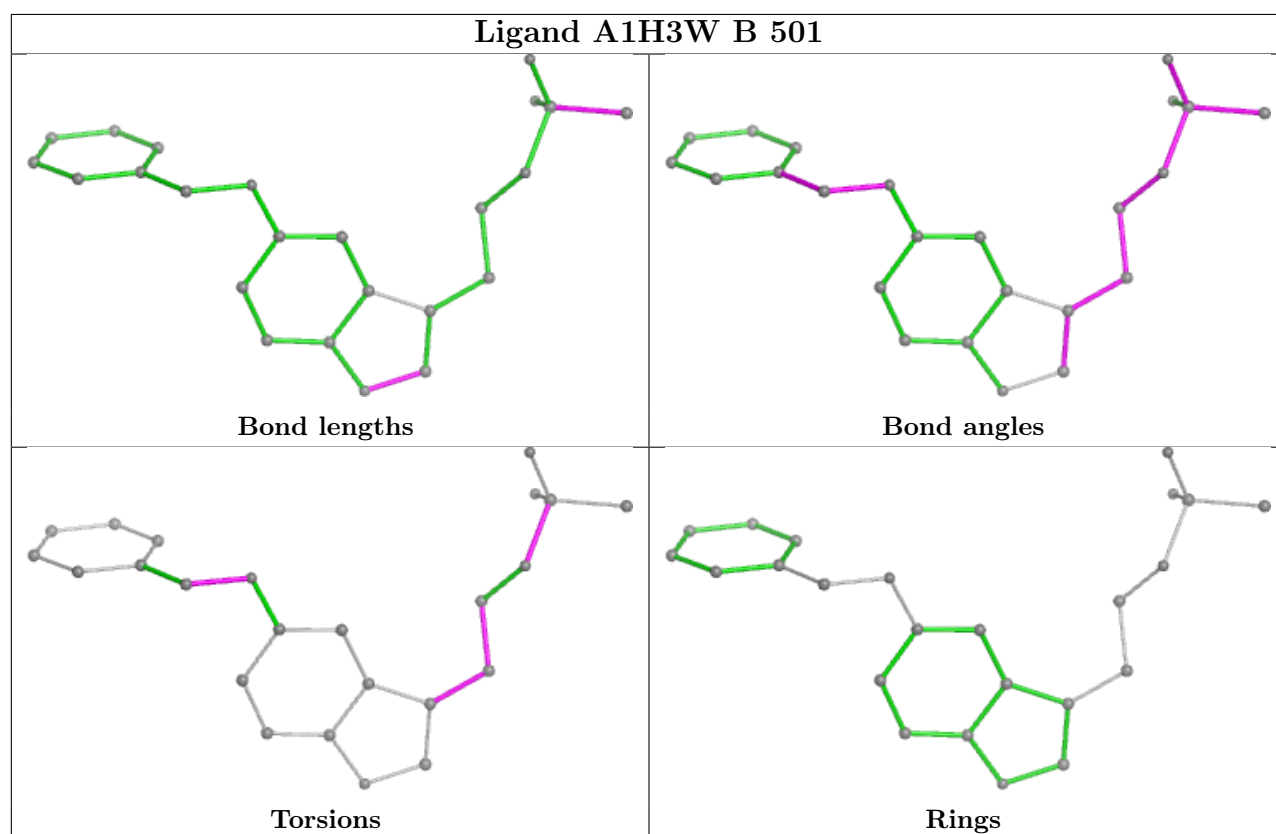
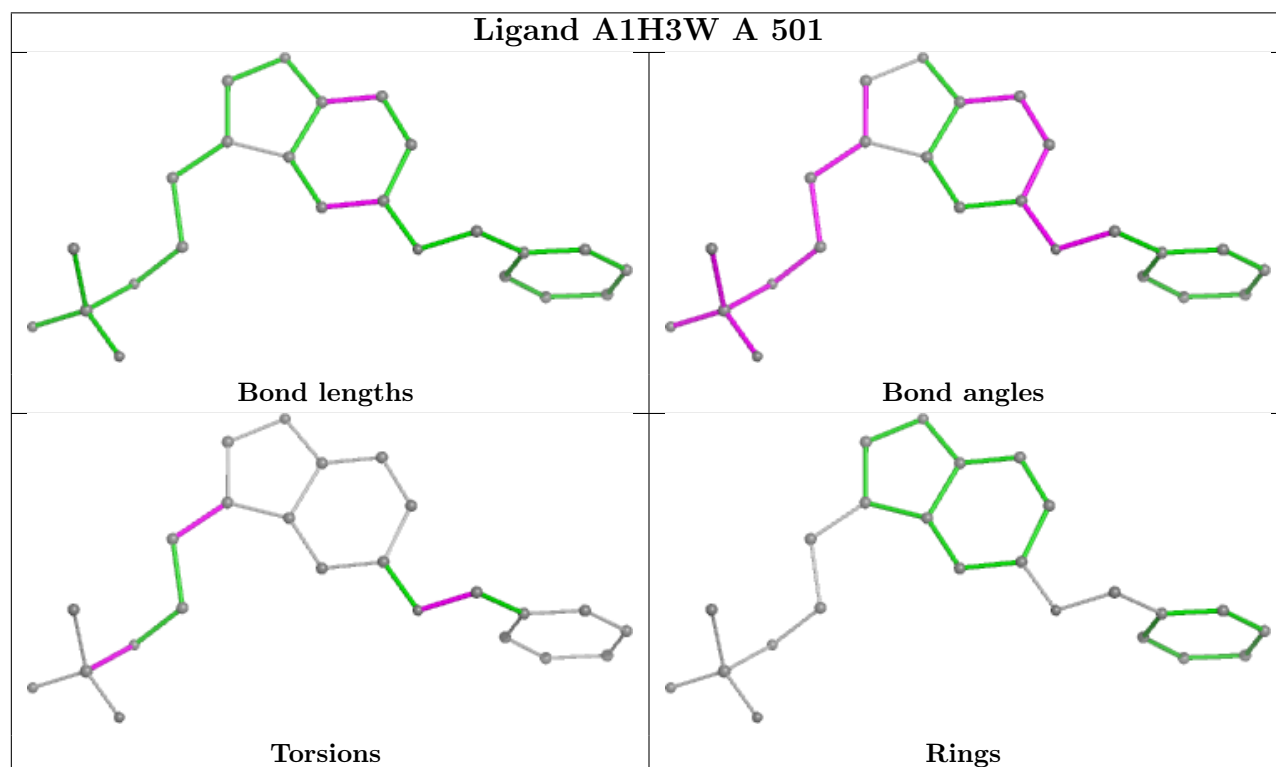
There are no ring outliers.

2 monomers are involved in 3 short contacts:

Mol	Chain	Res	Type	Clashes	Symm-Clashes
2	A	501	A1H3W	2	0
2	B	501	A1H3W	1	0

The following is a two-dimensional graphical depiction of Mogul quality analysis of bond lengths, bond angles, torsion angles, and ring geometry for all instances of the Ligand of Interest. In addition, ligands with molecular weight > 250 and outliers as shown on the validation Tables will also be included. For torsion angles, if less than 5% of the Mogul distribution of torsion angles is within 10 degrees of the torsion angle in question, then that torsion angle is considered an outlier. Any bond that is central to one or more torsion angles identified as an outlier by Mogul will be highlighted in the graph. For rings, the root-mean-square deviation (RMSD) between the ring in question and similar rings identified by Mogul is calculated over all ring torsion angles. If the average RMSD is greater than 60 degrees and the minimal RMSD between the ring in question and any Mogul-identified rings is also greater than 60 degrees, then that ring is considered an outlier.

The outliers are highlighted in purple. The color gray indicates Mogul did not find sufficient equivalents in the CSD to analyse the geometry.



## 5.7 Other polymers [i](#)

There are no such residues in this entry.

## 5.8 Polymer linkage issues [i](#)

There are no chain breaks in this entry.



## 6 Fit of model and data

### 6.1 Protein, DNA and RNA chains

In the following table, the column labelled ‘#RSRZ > 2’ contains the number (and percentage) of RSRZ outliers, followed by percent RSRZ outliers for the chain as percentile scores relative to all X-ray entries and entries of similar resolution. The OWAB column contains the minimum, median, 95<sup>th</sup> percentile and maximum values of the occupancy-weighted average B-factor per residue. The column labelled ‘Q < 0.9’ lists the number of (and percentage) of residues with an average occupancy less than 0.9.

Mol	Chain	Analysed	<RSRZ>	#RSRZ>2	OWAB(Å <sup>2</sup> )	Q<0.9
1	A	199/240 (82%)	0.97	18 (9%) 17 18	36, 74, 111, 142	1 (0%)
1	B	209/240 (87%)	0.92	14 (6%) 25 27	46, 73, 110, 136	2 (0%)
All	All	408/480 (85%)	0.94	32 (7%) 20 22	36, 74, 111, 142	3 (0%)

All (32) RSRZ outliers are listed below:

Mol	Chain	Res	Type	RSRZ
1	B	220	ALA	4.5
1	B	257[A]	HIS	4.5
1	B	323	SER	3.8
1	A	440[A]	HIS	3.7
1	A	275	TYR	3.6
1	A	279	PRO	3.2
1	B	324	GLY	3.1
1	B	350	PHE	3.1
1	A	240	PRO	3.0
1	A	283	GLY	2.9
1	A	265	PRO	2.9
1	B	283	GLY	2.9
1	B	285	LEU	2.7
1	B	288	LEU	2.7
1	A	239	PRO	2.6
1	A	327	TYR	2.4
1	A	357	LYS	2.4
1	A	308	TRP	2.3
1	A	329	VAL	2.2
1	A	325	GLY	2.2
1	A	269	VAL	2.2
1	A	271	VAL	2.2
1	B	308	TRP	2.2
1	A	340	THR	2.2

*Continued on next page...*

*Continued from previous page...*

Mol	Chain	Res	Type	RSRZ
1	B	377	SER	2.2
1	B	447	ASP	2.2
1	A	277	LYS	2.1
1	B	325	GLY	2.1
1	A	298	PHE	2.1
1	A	222	GLY	2.1
1	B	351	GLY	2.1
1	B	354	VAL	2.0

## 6.2 Non-standard residues in protein, DNA, RNA chains [i](#)

There are no non-standard protein/DNA/RNA residues in this entry.

## 6.3 Carbohydrates [i](#)

There are no monosaccharides in this entry.

## 6.4 Ligands [i](#)

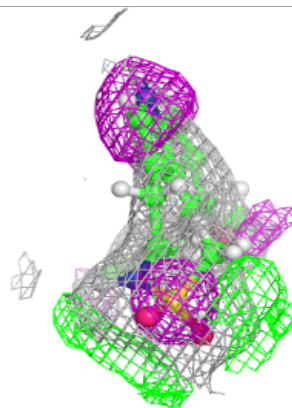
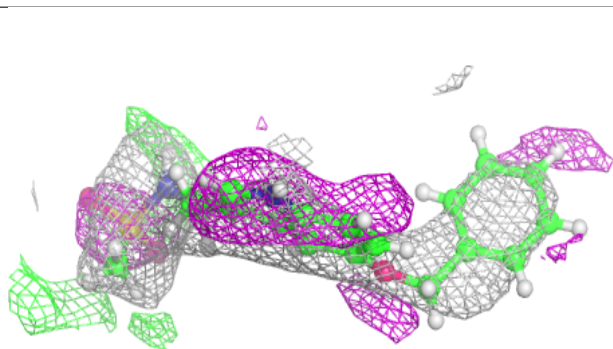
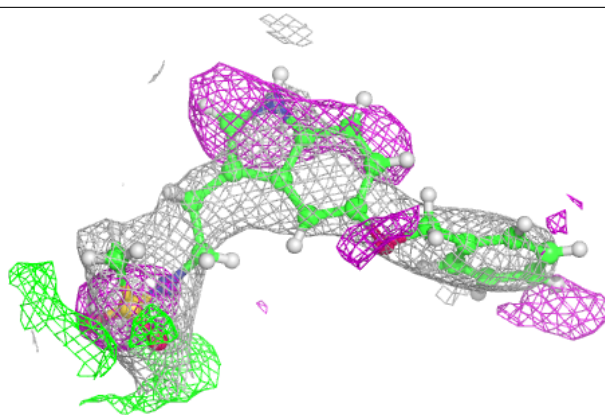
In the following table, the Atoms column lists the number of modelled atoms in the group and the number defined in the chemical component dictionary. The B-factors column lists the minimum, median, 95<sup>th</sup> percentile and maximum values of B factors of atoms in the group. The column labelled 'Q< 0.9' lists the number of atoms with occupancy less than 0.9.

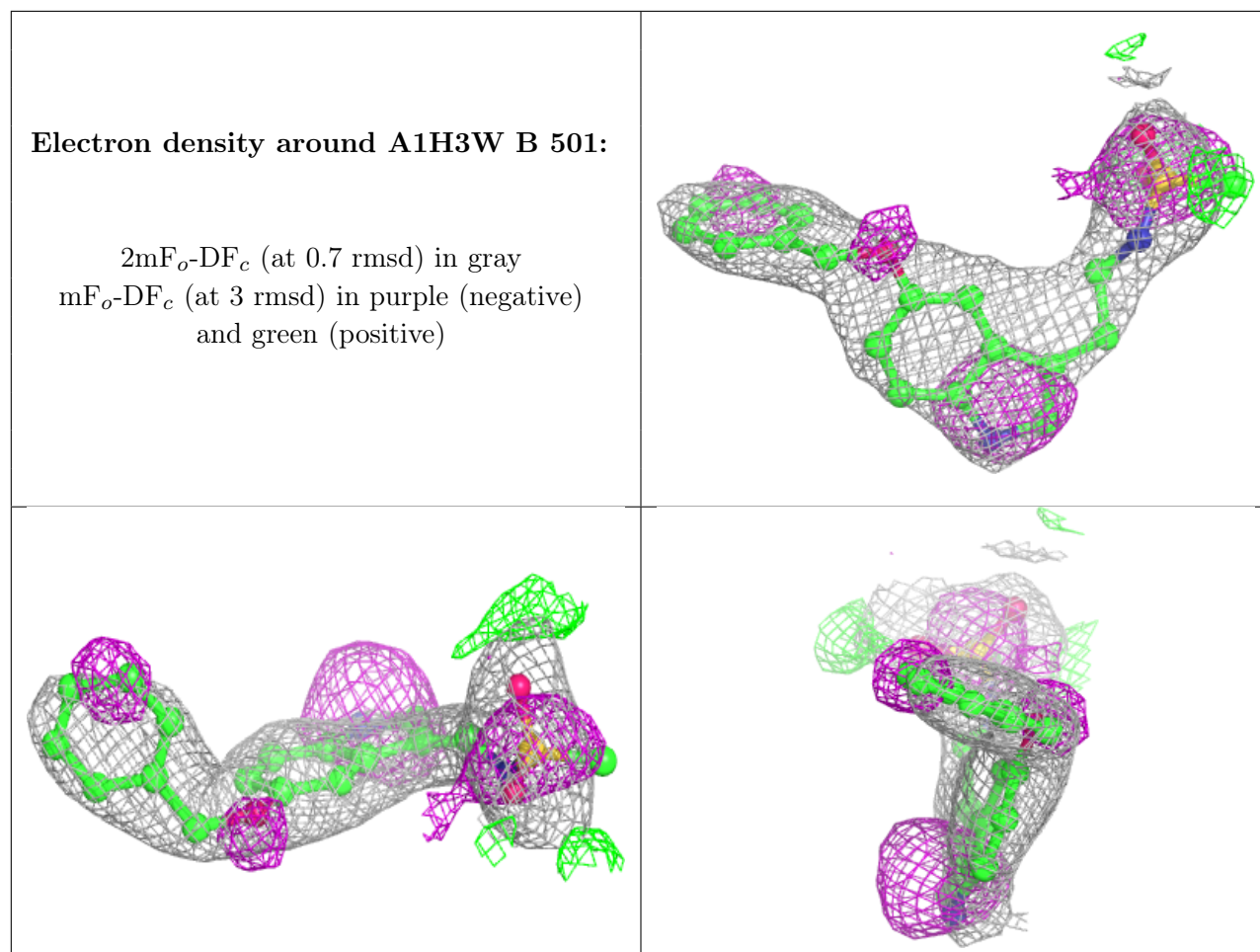
Mol	Type	Chain	Res	Atoms	RSCC	RSR	B-factors(Å <sup>2</sup> )	Q<0.9
2	A1H3W	A	501	24/24	0.77	0.20	61,74,87,89	0
2	A1H3W	B	501	24/24	0.86	0.17	59,60,71,77	0

The following is a graphical depiction of the model fit to experimental electron density of all instances of the Ligand of Interest. In addition, ligands with molecular weight > 250 and outliers as shown on the geometry validation Tables will also be included. Each fit is shown from different orientation to approximate a three-dimensional view.

**Electron density around A1H3W A 501:**

$2mF_o-DF_c$  (at 0.7 rmsd) in gray  
 $mF_o-DF_c$  (at 3 rmsd) in purple (negative)  
and green (positive)





## 6.5 Other polymers [i](#)

There are no such residues in this entry.