



Full wwPDB X-ray Structure Validation Report ⓘ

Nov 3, 2020 – 11:42 AM EST

PDB ID : 5RWA
Title : INPP5D PanDDA analysis group deposition – Crystal Structure of the phosphatase and C2 domains of SHIP1 in complex with Z2856434812
Authors : Bradshaw, W.J.; Newman, J.A.; von Delft, F.; Arrowsmith, C.H.; Edwards, A.M.; Bountra, C.; Gileadi, O.
Deposited on : 2020-10-30
Resolution : 1.29 Å(reported)

This is a Full wwPDB X-ray Structure Validation Report for a publicly released PDB entry.

We welcome your comments at validation@mail.wwpdb.org

A user guide is available at

<https://www.wwpdb.org/validation/2017/XrayValidationReportHelp>

with specific help available everywhere you see the ⓘ symbol.

The following versions of software and data (see [references ⓘ](#)) were used in the production of this report:

MolProbity : 4.02b-467
Mogul : 1.8.5 (274361), CSD as541be (2020)
Xtriage (Phenix) : 1.13
EDS : 2.14.6
Percentile statistics : 20191225.v01 (using entries in the PDB archive December 25th 2019)
Refmac : 5.8.0158
CCP4 : 7.0.044 (Gargrove)
Ideal geometry (proteins) : Engh & Huber (2001)
Ideal geometry (DNA, RNA) : Parkinson et al. (1996)
Validation Pipeline (wwPDB-VP) : 2.14.6

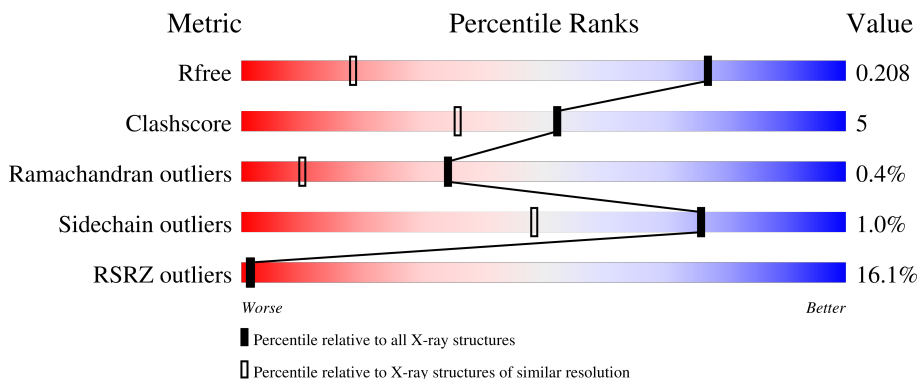
1 Overall quality at a glance

The following experimental techniques were used to determine the structure:

X-RAY DIFFRACTION

The reported resolution of this entry is 1.29 Å.

Percentile scores (ranging between 0-100) for global validation metrics of the entry are shown in the following graphic. The table shows the number of entries on which the scores are based.



Metric	Whole archive (#Entries)	Similar resolution (#Entries, resolution range(Å))
R_{free}	130704	1058 (1.30-1.30)
Clashscore	141614	1101 (1.30-1.30)
Ramachandran outliers	138981	1058 (1.30-1.30)
Sidechain outliers	138945	1058 (1.30-1.30)
RSRZ outliers	127900	1029 (1.30-1.30)

The table below summarises the geometric issues observed across the polymeric chains and their fit to the electron density. The red, orange, yellow and green segments on the lower bar indicate the fraction of residues that contain outliers for ≥ 3 , 2, 1 and 0 types of geometric quality criteria respectively. A grey segment represents the fraction of residues that are not modelled. The numeric value for each fraction is indicated below the corresponding segment, with a dot representing fractions $\leq 5\%$. The upper red bar (where present) indicates the fraction of residues that have poor fit to the electron density. The numeric value is given above the bar.

Mol	Chain	Length	Quality of chain
1	A	463	

The following table lists non-polymeric compounds, carbohydrate monomers and non-standard residues in protein, DNA, RNA chains that are outliers for geometric or electron-density-fit criteria:

Mol	Type	Chain	Res	Chirality	Geometry	Clashes	Electron density
2	O3M	A	903	-	-	-	X

2 Entry composition i

There are 4 unique types of molecules in this entry. The entry contains 4780 atoms, of which 0 are hydrogens and 0 are deuteriums.

In the tables below, the ZeroOcc column contains the number of atoms modelled with zero occupancy, the AltConf column contains the number of residues with at least one atom in alternate conformation and the Trace column contains the number of residues modelled with at most 2 atoms.

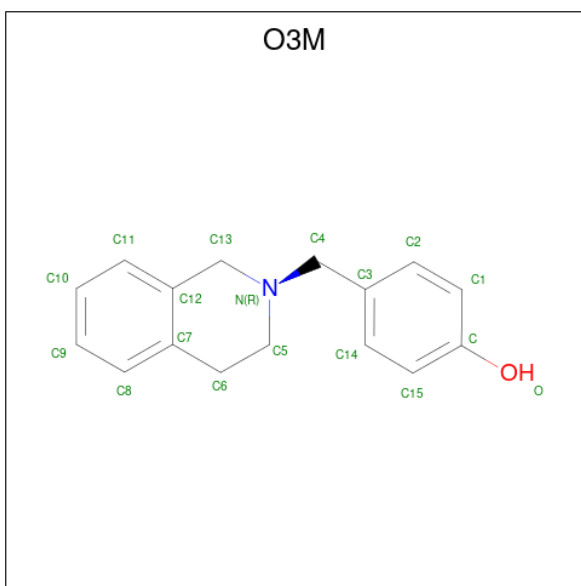
- Molecule 1 is a protein called Phosphatidylinositol 3,4,5-trisphosphate 5-phosphatase 1.

Mol	Chain	Residues	Atoms					ZeroOcc	AltConf	Trace
			Total	C	N	O	S			
1	A	460	4254	2689	721	824	20	0	33	0

There are 2 discrepancies between the modelled and reference sequences:

Chain	Residue	Modelled	Actual	Comment	Reference
A	394	SER	-	expression tag	UNP Q92835
A	395	MET	-	expression tag	UNP Q92835

- Molecule 2 is 4-[(3,4-dihydroisoquinolin-2(1H)-yl)methyl]phenol (three-letter code: O3M) (formula: C₁₆H₁₇NO).



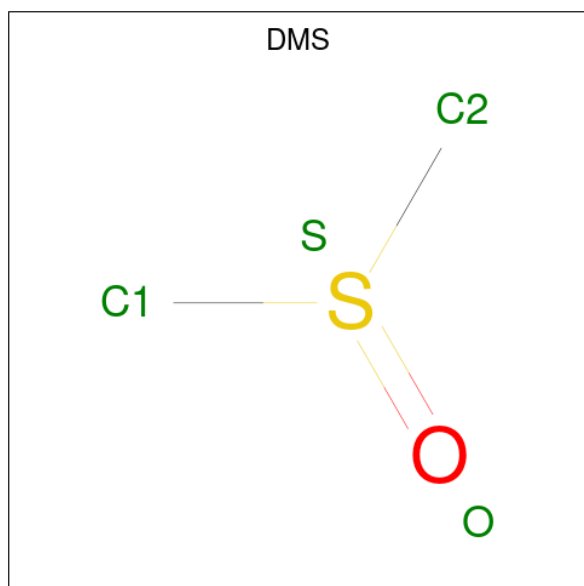
Mol	Chain	Residues	Atoms				ZeroOcc	AltConf
			Total	C	N	O		
2	A	1	18	16	1	1	0	0
2	A	1	18	16	1	1	0	0

Continued on next page...

Continued from previous page...

Mol	Chain	Residues	Atoms				ZeroOcc	AltConf
			Total	C	N	O		
2	A	1	18	16	1	1	0	0

- Molecule 3 is DIMETHYL SULFOXIDE (three-letter code: DMS) (formula: C₂H₆OS).



Mol	Chain	Residues	Atoms				ZeroOcc	AltConf
			Total	C	O	S		
3	A	1	4	2	1	1	0	0
3	A	1	4	2	1	1	0	0
3	A	1	4	2	1	1	0	0

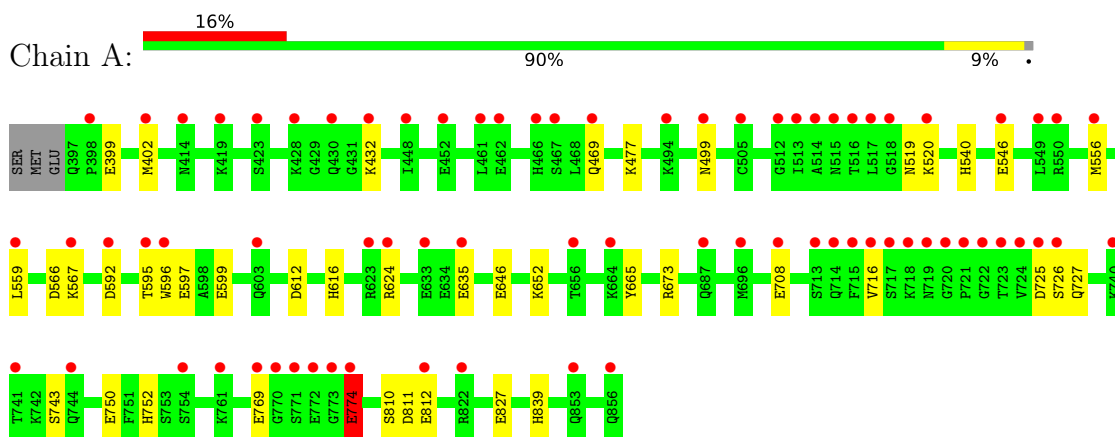
- Molecule 4 is water.

Mol	Chain	Residues	Atoms		ZeroOcc	AltConf
4	A	456	Total	O	0	9
			460	460		

3 Residue-property plots [i](#)

These plots are drawn for all protein, RNA, DNA and oligosaccharide chains in the entry. The first graphic for a chain summarises the proportions of the various outlier classes displayed in the second graphic. The second graphic shows the sequence view annotated by issues in geometry and electron density. Residues are color-coded according to the number of geometric quality criteria for which they contain at least one outlier: green = 0, yellow = 1, orange = 2 and red = 3 or more. A red dot above a residue indicates a poor fit to the electron density ($RSRZ > 2$). Stretches of 2 or more consecutive residues without any outlier are shown as a green connector. Residues present in the sample, but not in the model, are shown in grey.

- Molecule 1: Phosphatidylinositol 3,4,5-trisphosphate 5-phosphatase 1



4 Data and refinement statistics

Property	Value	Source
Space group	P 21 21 21	Depositor
Cell constants a, b, c, α , β , γ	62.56Å 79.48Å 89.62Å 90.00° 90.00° 90.00°	Depositor
Resolution (Å)	44.85 – 1.29 44.81 – 1.29	Depositor EDS
% Data completeness (in resolution range)	99.9 (44.85-1.29) 99.9 (44.81-1.29)	Depositor EDS
R_{merge}	0.08	Depositor
R_{sym}	(Not available)	Depositor
$\langle I/\sigma(I) \rangle$ ¹	1.35 (at 1.29Å)	Xtrriage
Refinement program	REFMAC 5.8.0238	Depositor
R, R_{free}	0.167 , 0.189 0.190 , 0.208	Depositor DCC
R_{free} test set	5624 reflections (4.99%)	wwPDB-VP
Wilson B-factor (Å ²)	14.2	Xtrriage
Anisotropy	0.034	Xtrriage
Bulk solvent k_{sol} (e/Å ³), B_{sol} (Å ²)	0.31 , 38.0	EDS
L-test for twinning ²	$\langle L \rangle = 0.51$, $\langle L^2 \rangle = 0.34$	Xtrriage
Estimated twinning fraction	No twinning to report.	Xtrriage
F_o, F_c correlation	0.96	EDS
Total number of atoms	4780	wwPDB-VP
Average B, all atoms (Å ²)	19.0	wwPDB-VP

Xtrriage's analysis on translational NCS is as follows: *The largest off-origin peak in the Patterson function is 5.01% of the height of the origin peak. No significant pseudotranslation is detected.*

¹Intensities estimated from amplitudes.

²Theoretical values of $\langle |L| \rangle$, $\langle L^2 \rangle$ for acentric reflections are 0.5, 0.333 respectively for untwinned datasets, and 0.375, 0.2 for perfectly twinned datasets.

5 Model quality [i](#)

5.1 Standard geometry [i](#)

Bond lengths and bond angles in the following residue types are not validated in this section: DMS, O3M

The Z score for a bond length (or angle) is the number of standard deviations the observed value is removed from the expected value. A bond length (or angle) with $|Z| > 5$ is considered an outlier worth inspection. RMSZ is the root-mean-square of all Z scores of the bond lengths (or angles).

Mol	Chain	Bond lengths		Bond angles	
		RMSZ	# $ Z > 5$	RMSZ	# $ Z > 5$
1	A	0.78	3/4352 (0.1%)	0.87	1/5879 (0.0%)

All (3) bond length outliers are listed below:

Mol	Chain	Res	Type	Atoms	Z	Observed(Å)	Ideal(Å)
1	A	811	ASP	C-N	6.24	1.48	1.34
1	A	827	GLU	CD-OE1	-5.71	1.19	1.25
1	A	566	ASP	C-N	-5.51	1.21	1.34

All (1) bond angle outliers are listed below:

Mol	Chain	Res	Type	Atoms	Z	Observed(°)	Ideal(°)
1	A	673	ARG	NE-CZ-NH2	-6.92	116.84	120.30

There are no chirality outliers.

There are no planarity outliers.

5.2 Too-close contacts [i](#)

In the following table, the Non-H and H(model) columns list the number of non-hydrogen atoms and hydrogen atoms in the chain respectively. The H(added) column lists the number of hydrogen atoms added and optimized by MolProbity. The Clashes column lists the number of clashes within the asymmetric unit, whereas Symm-Clashes lists symmetry related clashes.

Mol	Chain	Non-H	H(model)	H(added)	Clashes	Symm-Clashes
1	A	4254	0	4128	47	0
2	A	54	0	0	0	0
3	A	12	0	18	0	0
4	A	460	0	0	17	1

Continued on next page...

Continued from previous page...

Mol	Chain	Non-H	H(model)	H(added)	Clashes	Symm-Clashes
All	All	4780	0	4146	47	1

The all-atom clashscore is defined as the number of clashes found per 1000 atoms (including hydrogen atoms). The all-atom clashscore for this structure is 5.

All (47) close contacts within the same asymmetric unit are listed below, sorted by their clash magnitude.

Atom-1	Atom-2	Interatomic distance (Å)	Clash overlap (Å)
1:A:402[C]:MET:HE1	1:A:708[C]:GLU:OE2	1.55	1.06
1:A:624:ARG:NH1	4:A:1001[B]:HOH:O	1.88	1.05
1:A:402[C]:MET:SD	1:A:708[C]:GLU:CG	2.47	1.03
1:A:402[C]:MET:CE	1:A:708[C]:GLU:OE2	2.08	1.01
1:A:567:LYS:HD2	4:A:1269:HOH:O	1.59	1.00
1:A:402[C]:MET:SD	1:A:708[C]:GLU:HG2	2.05	0.97
1:A:402[C]:MET:SD	1:A:708[C]:GLU:CD	2.44	0.95
1:A:810:SER:OG	1:A:812:GLU:HG2	1.84	0.77
1:A:725:ASP:O	1:A:727:GLN:N	2.20	0.75
1:A:546[A]:GLU:OE2	4:A:1003:HOH:O	2.11	0.68
1:A:546[C]:GLU:OE2	4:A:1003:HOH:O	2.11	0.68
1:A:646:GLU:OE2	1:A:652:LYS:HD2	1.94	0.68
1:A:402[C]:MET:CE	1:A:708[C]:GLU:CD	2.63	0.67
1:A:592[A]:ASP:OD2	4:A:1004[A]:HOH:O	2.13	0.66
1:A:432[B]:LYS:HG2	4:A:1067:HOH:O	1.94	0.65
1:A:546[A]:GLU:CD	1:A:546[A]:GLU:H	2.06	0.59
1:A:546[C]:GLU:CD	1:A:546[C]:GLU:H	2.06	0.59
1:A:499[B]:ASN:ND2	4:A:1013:HOH:O	2.37	0.57
1:A:499[C]:ASN:ND2	4:A:1013:HOH:O	2.37	0.57
1:A:725:ASP:OD1	1:A:727:GLN:NE2	2.39	0.56
1:A:567:LYS:CD	4:A:1269:HOH:O	2.36	0.56
1:A:556[C]:MET:SD	1:A:839:HIS:HB3	2.46	0.56
1:A:774:GLU:HB3	4:A:1391:HOH:O	2.05	0.55
1:A:716:VAL:HG22	4:A:1212:HOH:O	2.05	0.55
1:A:399:GLU:HG3	4:A:1371:HOH:O	2.11	0.50
1:A:519:ASN:HD21	1:A:520[C]:LYS:NZ	2.09	0.50
1:A:519:ASN:HD21	1:A:520[A]:LYS:NZ	2.09	0.50
1:A:750:GLU:OE1	1:A:752:HIS:HE1	1.95	0.50
1:A:612:ASP:O	1:A:616:HIS:HD2	1.96	0.49
1:A:402[A]:MET:HG2	1:A:708[A]:GLU:CG	2.43	0.49
1:A:402[C]:MET:HE3	4:A:1143:HOH:O	2.12	0.49
1:A:432[A]:LYS:HE3	1:A:635[A]:GLU:OE2	2.15	0.47
1:A:432[C]:LYS:HE3	1:A:635[C]:GLU:OE2	2.15	0.47

Continued on next page...

Continued from previous page...

Atom-1	Atom-2	Interatomic distance (Å)	Clash overlap (Å)
1:A:559[B]:LEU:HD12	1:A:559[B]:LEU:C	2.36	0.46
1:A:599:GLU:OE1	4:A:1005:HOH:O	2.20	0.45
1:A:499[A]:ASN:HB2	4:A:1075:HOH:O	2.15	0.45
1:A:402[C]:MET:HE3	1:A:708[C]:GLU:OE2	2.11	0.44
1:A:595[B]:THR:HG21	1:A:665:TYR:CE2	2.52	0.44
1:A:595[B]:THR:HG21	1:A:665:TYR:CZ	2.53	0.44
1:A:725:ASP:C	1:A:727:GLN:N	2.70	0.43
1:A:520[B]:LYS:HE2	1:A:540:HIS:CE1	2.54	0.42
1:A:432[B]:LYS:HG3	4:A:1200:HOH:O	2.19	0.42
1:A:402[C]:MET:CG	1:A:708[C]:GLU:HG2	2.49	0.42
1:A:519:ASN:HD21	1:A:520[B]:LYS:HE3	1.84	0.41
1:A:477:LYS:HE2	4:A:1123:HOH:O	2.19	0.41
1:A:596[B]:TRP:CZ3	1:A:597:GLU:CD	2.95	0.41
1:A:402[A]:MET:HG2	1:A:708[A]:GLU:HG2	2.03	0.40

All (1) symmetry-related close contacts are listed below. The label for Atom-2 includes the symmetry operator and encoded unit-cell translations to be applied.

Atom-1	Atom-2	Interatomic distance (Å)	Clash overlap (Å)
4:A:1013:HOH:O	4:A:1304:HOH:O[4_455]	1.96	0.24

5.3 Torsion angles [i](#)

5.3.1 Protein backbone [i](#)

In the following table, the Percentiles column shows the percent Ramachandran outliers of the chain as a percentile score with respect to all X-ray entries followed by that with respect to entries of similar resolution.

The Analysed column shows the number of residues for which the backbone conformation was analysed, and the total number of residues.

Mol	Chain	Analysed	Favoured	Allowed	Outliers	Percentiles
1	A	524/463 (113%)	505 (96%)	17 (3%)	2 (0%)	34 10

All (2) Ramachandran outliers are listed below:

Mol	Chain	Res	Type
1	A	726	SER
1	A	774	GLU

5.3.2 Protein sidechains [i](#)

In the following table, the Percentiles column shows the percent sidechain outliers of the chain as a percentile score with respect to all X-ray entries followed by that with respect to entries of similar resolution.

The Analysed column shows the number of residues for which the sidechain conformation was analysed, and the total number of residues.

Mol	Chain	Analysed	Rotameric	Outliers	Percentiles
1	A	479/417 (115%)	475 (99%)	4 (1%)	81 58

All (4) residues with a non-rotameric sidechain are listed below:

Mol	Chain	Res	Type
1	A	469	GLN
1	A	743	SER
1	A	769	GLU
1	A	774	GLU

Some sidechains can be flipped to improve hydrogen bonding and reduce clashes. All (6) such sidechains are listed below:

Mol	Chain	Res	Type
1	A	469	GLN
1	A	508	ASN
1	A	519	ASN
1	A	616	HIS
1	A	658	GLN
1	A	752	HIS

5.3.3 RNA [i](#)

There are no RNA molecules in this entry.

5.4 Non-standard residues in protein, DNA, RNA chains [i](#)

There are no non-standard protein/DNA/RNA residues in this entry.

5.5 Carbohydrates [i](#)

There are no monosaccharides in this entry.

5.6 Ligand geometry

6 ligands are modelled in this entry.

In the following table, the Counts columns list the number of bonds (or angles) for which Mogul statistics could be retrieved, the number of bonds (or angles) that are observed in the model and the number of bonds (or angles) that are defined in the Chemical Component Dictionary. The Link column lists molecule types, if any, to which the group is linked. The Z score for a bond length (or angle) is the number of standard deviations the observed value is removed from the expected value. A bond length (or angle) with $|Z| > 2$ is considered an outlier worth inspection. RMSZ is the root-mean-square of all Z scores of the bond lengths (or angles).

Mol	Type	Chain	Res	Link	Bond lengths			Bond angles		
					Counts	RMSZ	# Z > 2	Counts	RMSZ	# Z > 2
3	DMS	A	904	-	3,3,3	0.30	0	3,3,3	0.37	0
2	O3M	A	903	-	20,20,20	2.72	7 (35%)	27,27,27	1.84	7 (25%)
2	O3M	A	902	-	20,20,20	2.70	8 (40%)	27,27,27	1.37	4 (14%)
2	O3M	A	901	-	20,20,20	2.67	7 (35%)	27,27,27	1.47	3 (11%)
3	DMS	A	905	-	3,3,3	0.23	0	3,3,3	0.23	0
3	DMS	A	906	-	3,3,3	0.33	0	3,3,3	0.07	0

In the following table, the Chirals column lists the number of chiral outliers, the number of chiral centers analysed, the number of these observed in the model and the number defined in the Chemical Component Dictionary. Similar counts are reported in the Torsion and Rings columns. '-' means no outliers of that kind were identified.

Mol	Type	Chain	Res	Link	Chirals	Torsions	Rings
2	O3M	A	902	-	-	0/4/13/13	0/3/3/3
2	O3M	A	903	-	-	0/4/13/13	0/3/3/3
2	O3M	A	901	-	-	0/4/13/13	0/3/3/3

All (22) bond length outliers are listed below:

Mol	Chain	Res	Type	Atoms	Z	Observed(Å)	Ideal(Å)
2	A	903	O3M	C4-N	-8.30	1.31	1.47
2	A	901	O3M	C4-N	-8.26	1.31	1.47
2	A	902	O3M	C4-N	-8.01	1.32	1.47
2	A	902	O3M	C13-N	-4.72	1.39	1.47
2	A	903	O3M	C13-N	-4.29	1.39	1.47
2	A	901	O3M	C13-N	-4.14	1.40	1.47
2	A	903	O3M	C12-C7	-4.04	1.32	1.40
2	A	901	O3M	C12-C7	-3.67	1.33	1.40
2	A	902	O3M	C12-C7	-3.61	1.33	1.40
2	A	901	O3M	C5-C6	3.03	1.57	1.51
2	A	902	O3M	C5-C6	2.90	1.57	1.51

Continued on next page...

Continued from previous page...

Mol	Chain	Res	Type	Atoms	Z	Observed(Å)	Ideal(Å)
2	A	901	O3M	C11-C12	2.85	1.44	1.39
2	A	903	O3M	C5-C6	2.83	1.57	1.51
2	A	902	O3M	C11-C12	2.80	1.44	1.39
2	A	903	O3M	C11-C12	2.64	1.44	1.39
2	A	902	O3M	C4-C3	2.58	1.56	1.51
2	A	903	O3M	C8-C7	2.31	1.43	1.39
2	A	901	O3M	C8-C7	2.22	1.43	1.39
2	A	903	O3M	C4-C3	2.20	1.55	1.51
2	A	902	O3M	C1-C	2.12	1.43	1.38
2	A	902	O3M	C8-C7	2.10	1.43	1.39
2	A	901	O3M	C4-C3	2.05	1.55	1.51

All (14) bond angle outliers are listed below:

Mol	Chain	Res	Type	Atoms	Z	Observed(°)	Ideal(°)
2	A	901	O3M	C12-C13-N	5.34	118.43	112.14
2	A	903	O3M	C6-C5-N	4.94	116.44	111.07
2	A	902	O3M	C13-N-C5	4.66	115.86	109.91
2	A	903	O3M	C13-N-C5	3.67	114.60	109.91
2	A	903	O3M	C12-C13-N	3.44	116.20	112.14
2	A	901	O3M	C13-N-C5	3.21	114.01	109.91
2	A	903	O3M	C4-C3-C2	-3.17	114.81	120.77
2	A	902	O3M	C12-C13-N	3.01	115.69	112.14
2	A	903	O3M	C4-C3-C14	2.79	126.02	120.77
2	A	903	O3M	C3-C4-N	2.73	118.43	113.12
2	A	903	O3M	C4-N-C5	-2.60	105.27	111.06
2	A	902	O3M	C6-C5-N	2.56	113.86	111.07
2	A	901	O3M	C6-C5-N	2.44	113.72	111.07
2	A	902	O3M	C4-N-C13	2.09	115.33	111.62

There are no chirality outliers.

There are no torsion outliers.

There are no ring outliers.

No monomer is involved in short contacts.

5.7 Other polymers [i](#)

There are no such residues in this entry.

5.8 Polymer linkage issues

There are no chain breaks in this entry.

6 Fit of model and data

6.1 Protein, DNA and RNA chains

In the following table, the column labelled ‘#RSRZ> 2’ contains the number (and percentage) of RSRZ outliers, followed by percent RSRZ outliers for the chain as percentile scores relative to all X-ray entries and entries of similar resolution. The OWAB column contains the minimum, median, 95th percentile and maximum values of the occupancy-weighted average B-factor per residue. The column labelled ‘Q< 0.9’ lists the number of (and percentage) of residues with an average occupancy less than 0.9.

Mol	Chain	Analysed	<RSRZ>	#RSRZ>2	OWAB(Å ²)	Q<0.9
1	A	460/463 (99%)	0.75	74 (16%) 1 1	9, 15, 52, 87	46 (10%)

All (74) RSRZ outliers are listed below:

Mol	Chain	Res	Type	RSRZ
1	A	448[A]	ILE	14.5
1	A	771	SER	14.0
1	A	559[A]	LEU	13.6
1	A	724	VAL	13.0
1	A	596[A]	TRP	11.9
1	A	505[A]	CYS	11.6
1	A	513	ILE	10.3
1	A	556[A]	MET	10.1
1	A	461	LEU	9.4
1	A	723	THR	9.2
1	A	516	THR	9.1
1	A	741	THR	8.7
1	A	721	PRO	8.5
1	A	466[A]	HIS	8.5
1	A	549	LEU	8.2
1	A	550[A]	ARG	8.2
1	A	716	VAL	8.0
1	A	515	ASN	7.9
1	A	467[A]	SER	7.8
1	A	656[A]	THR	7.8
1	A	696[A]	MET	7.2
1	A	595[A]	THR	7.0
1	A	603[A]	GLN	6.7
1	A	499[A]	ASN	6.7
1	A	773	GLY	6.5
1	A	520[A]	LYS	6.4
1	A	494	LYS	6.2

Continued on next page...

Continued from previous page...

Mol	Chain	Res	Type	RSRZ
1	A	722	GLY	6.0
1	A	414[A]	ASN	5.9
1	A	761[A]	LYS	5.7
1	A	719	ASN	5.6
1	A	715	PHE	5.6
1	A	853[A]	GLN	5.5
1	A	592[A]	ASP	5.5
1	A	740	LYS	5.5
1	A	546[A]	GLU	5.3
1	A	718	LYS	5.3
1	A	469	GLN	5.3
1	A	754[A]	SER	5.0
1	A	512	GLY	5.0
1	A	713[A]	SER	4.9
1	A	514	ALA	4.9
1	A	664[A]	LYS	4.9
1	A	720	GLY	4.9
1	A	462[A]	GLU	4.7
1	A	517	LEU	4.6
1	A	452	GLU	4.5
1	A	518	GLY	4.2
1	A	432[A]	LYS	3.9
1	A	822	ARG	3.6
1	A	714	GLN	3.6
1	A	744	GLN	3.6
1	A	725	ASP	3.5
1	A	398	PRO	3.5
1	A	812	GLU	3.3
1	A	402[A]	MET	2.9
1	A	687[A]	GLN	2.9
1	A	726	SER	2.9
1	A	769	GLU	2.7
1	A	774	GLU	2.6
1	A	717	SER	2.6
1	A	856	GLN	2.6
1	A	770	GLY	2.5
1	A	567	LYS	2.5
1	A	428[A]	LYS	2.5
1	A	772	GLU	2.4
1	A	430[A]	GLN	2.4
1	A	623	ARG	2.4
1	A	624	ARG	2.3

Continued on next page...

Continued from previous page...

Mol	Chain	Res	Type	RSRZ
1	A	633[A]	GLU	2.3
1	A	423[A]	SER	2.1
1	A	635[A]	GLU	2.1
1	A	708[A]	GLU	2.1
1	A	419	LYS	2.0

6.2 Non-standard residues in protein, DNA, RNA chains [i](#)

There are no non-standard protein/DNA/RNA residues in this entry.

6.3 Carbohydrates [i](#)

There are no monosaccharides in this entry.

6.4 Ligands [i](#)

In the following table, the Atoms column lists the number of modelled atoms in the group and the number defined in the chemical component dictionary. The B-factors column lists the minimum, median, 95th percentile and maximum values of B factors of atoms in the group. The column labelled 'Q< 0.9' lists the number of atoms with occupancy less than 0.9.

Mol	Type	Chain	Res	Atoms	RSCC	RSR	B-factors(Å ²)	Q<0.9
2	O3M	A	903	18/18	0.60	0.44	33,42,64,66	18
2	O3M	A	901	18/18	0.74	0.18	20,23,32,34	18
2	O3M	A	902	18/18	0.76	0.24	25,31,34,34	18
3	DMS	A	904	4/4	0.99	0.06	16,16,16,17	0
3	DMS	A	905	4/4	0.99	0.05	15,16,18,18	0
3	DMS	A	906	4/4	0.99	0.05	12,13,14,14	0

6.5 Other polymers [i](#)

There are no such residues in this entry.