



Full wwPDB X-ray Structure Validation Report ⓘ

May 26, 2020 – 04:23 am BST

PDB ID : 1RUN
Title : CATABOLITE GENE ACTIVATOR PROTEIN (CAP)/DNA COMPLEX +
ADENOSINE-3',5'-CYCLIC-MONOPHOSPHATE
Authors : Parkinson, G.N.; Gunasekera, A.; Vojtechovsky, J.; Zhang, X.; Kunkel, T.A.;
Berman, H.M.; Ebright, R.H.
Deposited on : 1996-05-26
Resolution : 2.70 Å(reported)

This is a Full wwPDB X-ray Structure Validation Report for a publicly released PDB entry.

We welcome your comments at validation@mail.wwpdb.org

A user guide is available at

<https://www.wwpdb.org/validation/2017/XrayValidationReportHelp>

with specific help available everywhere you see the ⓘ symbol.

The following versions of software and data (see [references ⓘ](#)) were used in the production of this report:

MolProbity : 4.02b-467
Mogul : 1.8.5 (274361), CSD as541be (2020)
Xtriage (Phenix) : 1.13
EDS : 2.11
buster-report : 1.1.7 (2018)
Percentile statistics : 20191225.v01 (using entries in the PDB archive December 25th 2019)
Refmac : 5.8.0158
CCP4 : 7.0.044 (Gargrove)
Ideal geometry (proteins) : Engh & Huber (2001)
Ideal geometry (DNA, RNA) : Parkinson et al. (1996)
Validation Pipeline (wwPDB-VP) : 2.11

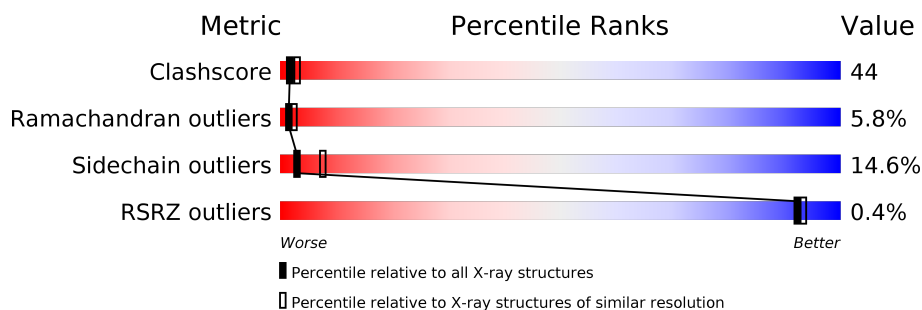
1 Overall quality at a glance

The following experimental techniques were used to determine the structure:

X-RAY DIFFRACTION

The reported resolution of this entry is 2.70 Å.

Percentile scores (ranging between 0-100) for global validation metrics of the entry are shown in the following graphic. The table shows the number of entries on which the scores are based.



Metric	Whole archive (#Entries)	Similar resolution (#Entries, resolution range(Å))
Clashscore	141614	3122 (2.70-2.70)
Ramachandran outliers	138981	3069 (2.70-2.70)
Sidechain outliers	138945	3069 (2.70-2.70)
RSRZ outliers	127900	2737 (2.70-2.70)

The table below summarises the geometric issues observed across the polymeric chains and their fit to the electron density. The red, orange, yellow and green segments on the lower bar indicate the fraction of residues that contain outliers for ≥ 3 , 2, 1 and 0 types of geometric quality criteria respectively. A grey segment represents the fraction of residues that are not modelled. The numeric value for each fraction is indicated below the corresponding segment, with a dot representing fractions $\leq 5\%$. The upper red bar (where present) indicates the fraction of residues that have poor fit to the electron density. The numeric value is given above the bar.

Mol	Chain	Length	Quality of chain
1	C	14	
1	E	14	
2	D	17	
2	F	17	
3	A	209	
3	B	209	

The following table lists non-polymeric compounds, carbohydrate monomers and non-standard

residues in protein, DNA, RNA chains that are outliers for geometric or electron-density-fit criteria:

Mol	Type	Chain	Res	Chirality	Geometry	Clashes	Electron density
4	CMP	A	679	-	-	X	-

2 Entry composition i

There are 5 unique types of molecules in this entry. The entry contains 4654 atoms, of which 0 are hydrogens and 0 are deuteriums.

In the tables below, the ZeroOcc column contains the number of atoms modelled with zero occupancy, the AltConf column contains the number of residues with at least one atom in alternate conformation and the Trace column contains the number of residues modelled with at most 2 atoms.

- Molecule 1 is a DNA chain called DNA (5'-D(*GP*CP*GP*AP*AP*AP*AP*AP*TP*GP*TP*GP*AP*T)-3').

Mol	Chain	Residues	Atoms					ZeroOcc	AltConf	Trace
			Total	C	N	O	P			
1	C	14	Total 290	C 139	N 59	O 79	P 13	0	0	0
1	E	14	Total 290	C 139	N 59	O 79	P 13	0	0	0

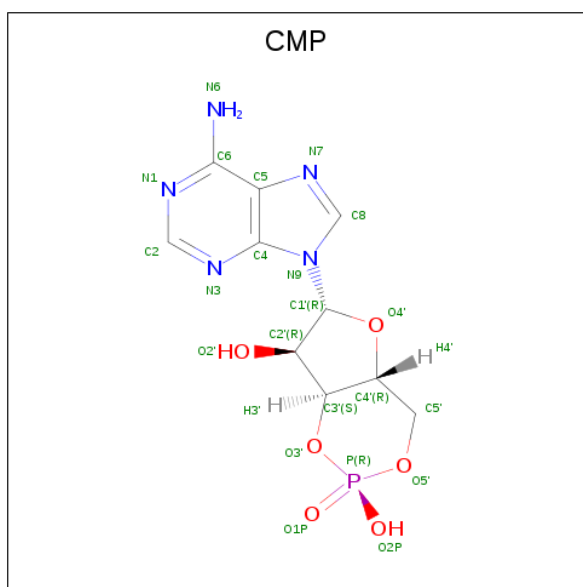
- Molecule 2 is a DNA chain called DNA (5'-D(*CP*TP*AP*GP*AP*TP*CP*AP*CP*AP*TP*TP*TP*TP*TP*CP*G)-3').

Mol	Chain	Residues	Atoms					ZeroOcc	AltConf	Trace
			Total	C	N	O	P			
2	D	17	Total 341	C 166	N 56	O 103	P 16	0	0	0
2	F	17	Total 341	C 166	N 56	O 103	P 16	0	0	0

- Molecule 3 is a protein called PROTEIN (CATABOLITE GENE ACTIVATOR PROTEIN (CAP)).

Mol	Chain	Residues	Atoms					ZeroOcc	AltConf	Trace
			Total	C	N	O	S			
3	A	201	Total 1591	C 1007	N 280	O 295	S 9	0	0	0
3	B	197	Total 1556	C 986	N 273	O 288	S 9	0	0	0

- Molecule 4 is ADENOSINE-3',5'-CYCLIC-MONOPHOSPHATE (three-letter code: CMP) (formula: C₁₀H₁₂N₅O₆P).



Mol	Chain	Residues	Atoms					ZeroOcc	AltConf
			Total	C	N	O	P		
4	A	1	22	10	5	6	1	0	0
4	B	1	22	10	5	6	1	0	0

- Molecule 5 is water.

Mol	Chain	Residues	Atoms		ZeroOcc	AltConf
			Total	O		
5	C	28	28	28	0	0
5	D	14	14	14	0	0
5	E	20	20	20	0	0
5	F	19	19	19	0	0
5	A	58	58	58	0	0
5	B	62	62	62	0	0

3 Residue-property plots [i](#)

These plots are drawn for all protein, RNA and DNA chains in the entry. The first graphic for a chain summarises the proportions of the various outlier classes displayed in the second graphic. The second graphic shows the sequence view annotated by issues in geometry and electron density. Residues are color-coded according to the number of geometric quality criteria for which they contain at least one outlier: green = 0, yellow = 1, orange = 2 and red = 3 or more. A red dot above a residue indicates a poor fit to the electron density ($RSRZ > 2$). Stretches of 2 or more consecutive residues without any outlier are shown as a green connector. Residues present in the sample, but not in the model, are shown in grey.

- Molecule 1: DNA (5'-D(*GP*CP*GP*AP*AP*AP*AP*AP*TP*GP*TP*GP*AP*T)-3')

Chain C: 



- Molecule 1: DNA (5'-D(*GP*CP*GP*AP*AP*AP*AP*AP*TP*GP*TP*GP*AP*T)-3')

Chain E: 



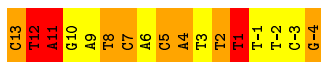
- Molecule 2: DNA (5'-D(*CP*TP*AP*GP*AP*TP*CP*AP*CP*AP*TP*TP*TP*TP*TP*CP*G)-3')

Chain D: 



- Molecule 2: DNA (5'-D(*CP*TP*AP*GP*AP*TP*CP*AP*CP*AP*TP*TP*TP*TP*TP*CP*G)-3')

Chain F: 



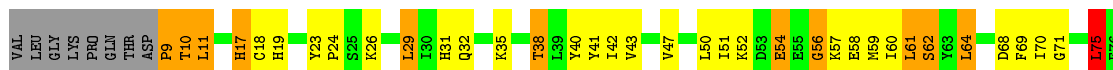
- Molecule 3: PROTEIN (CATALBOLITE GENE ACTIVATOR PROTEIN (CAP))

Chain A: 





● Molecule 3: PROTEIN (CATALBOLITE GENE ACTIVATOR PROTEIN (CAP))



4 Data and refinement statistics

Property	Value	Source
Space group	C 2 2 21	Depositor
Cell constants a, b, c, α , β , γ	136.93Å 152.80Å 76.00Å 90.00° 90.00° 90.00°	Depositor
Resolution (Å)	10.00 – 2.70 29.83 – 2.50	Depositor EDS
% Data completeness (in resolution range)	75.1 (10.00-2.70) 63.9 (29.83-2.50)	Depositor EDS
R_{merge}	0.12	Depositor
R_{sym}	(Not available)	Depositor
$\langle I/\sigma(I) \rangle$ ¹	3.29 (at 2.51Å)	Xtrriage
Refinement program	X-PLOR	Depositor
R, R_{free}	0.207 , (Not available) 0.214 , (Not available)	Depositor DCC
R_{free} test set	No test flags present.	wwPDB-VP
Wilson B-factor (Å ²)	32.8	Xtrriage
Anisotropy	0.742	Xtrriage
Bulk solvent k_{sol} (e/Å ³), B_{sol} (Å ²)	0.38 , 403.8	EDS
L-test for twinning ²	$\langle L \rangle = 0.41$, $\langle L^2 \rangle = 0.23$	Xtrriage
Estimated twinning fraction	No twinning to report.	Xtrriage
F_o, F_c correlation	0.89	EDS
Total number of atoms	4654	wwPDB-VP
Average B, all atoms (Å ²)	28.0	wwPDB-VP

Xtrriage's analysis on translational NCS is as follows: *The largest off-origin peak in the Patterson function is 2.69% of the height of the origin peak. No significant pseudotranslation is detected.*

¹Intensities estimated from amplitudes.

²Theoretical values of $\langle |L| \rangle$, $\langle L^2 \rangle$ for acentric reflections are 0.5, 0.333 respectively for untwinned datasets, and 0.375, 0.2 for perfectly twinned datasets.

5 Model quality [i](#)

5.1 Standard geometry [i](#)

Bond lengths and bond angles in the following residue types are not validated in this section: CMP

The Z score for a bond length (or angle) is the number of standard deviations the observed value is removed from the expected value. A bond length (or angle) with $|Z| > 5$ is considered an outlier worth inspection. RMSZ is the root-mean-square of all Z scores of the bond lengths (or angles).

Mol	Chain	Bond lengths		Bond angles	
		RMSZ	# Z >5	RMSZ	# Z >5
1	C	2.07	10/327 (3.1%)	1.93	13/504 (2.6%)
1	E	2.07	13/327 (4.0%)	1.93	13/504 (2.6%)
2	D	2.01	12/380 (3.2%)	1.82	8/584 (1.4%)
2	F	1.97	9/380 (2.4%)	2.06	21/584 (3.6%)
3	A	0.98	2/1616 (0.1%)	1.29	17/2174 (0.8%)
3	B	0.93	2/1580 (0.1%)	1.21	6/2127 (0.3%)
All	All	1.38	48/4610 (1.0%)	1.52	78/6477 (1.2%)

Chiral center outliers are detected by calculating the chiral volume of a chiral center and verifying if the center is modelled as a planar moiety or with the opposite hand. A planarity outlier is detected by checking planarity of atoms in a peptide group, atoms in a mainchain group or atoms of a sidechain that are expected to be planar.

Mol	Chain	#Chirality outliers	#Planarity outliers
2	F	0	4
3	A	0	4
All	All	0	8

All (48) bond length outliers are listed below:

Mol	Chain	Res	Type	Atoms	Z	Observed(Å)	Ideal(Å)
1	C	1	DA	C5-C6	10.98	1.50	1.41
2	D	25	DC	N1-C2	9.38	1.49	1.40
3	A	169	ARG	CA-CB	-9.33	1.33	1.53
2	D	16	DC	C4-N4	9.28	1.42	1.33
1	E	23	DA	C5-C6	8.94	1.49	1.41
1	E	17	DT	N1-C2	8.91	1.45	1.38
2	D	20	DT	C4-O4	-8.55	1.15	1.23
2	D	18	DC	N1-C2	8.41	1.48	1.40
1	C	-5	DG	C5-C6	8.08	1.50	1.42
2	F	-2	DT	N1-C2	7.74	1.44	1.38

Continued on next page...

Continued from previous page...

Mol	Chain	Res	Type	Atoms	Z	Observed(Å)	Ideal(Å)
2	F	12	DT	C4-C5	7.60	1.51	1.45
2	D	23	DT	C4-C5	7.53	1.51	1.45
1	C	-5	DG	C6-N1	-6.95	1.34	1.39
3	B	9	PRO	N-CD	6.95	1.57	1.47
1	E	18	DG	C6-O6	6.86	1.30	1.24
1	E	23	DA	C2-N3	6.47	1.39	1.33
1	E	14	DT	C4-C5	6.37	1.50	1.45
1	E	25	DG	C2-N3	6.31	1.37	1.32
2	F	8	DT	C4-O4	6.29	1.28	1.23
2	F	12	DT	N1-C2	6.22	1.43	1.38
1	C	7	DG	C2-N2	-6.09	1.28	1.34
1	C	7	DG	N9-C8	-6.06	1.33	1.37
2	D	16	DC	C3'-O3'	-6.03	1.36	1.44
1	E	22	DA	C5-C6	5.86	1.46	1.41
2	D	17	DA	C5-C6	5.81	1.46	1.41
1	E	19	DT	N3-C4	-5.78	1.34	1.38
1	E	24	DA	N9-C4	5.76	1.41	1.37
1	E	21	DA	C5-C6	-5.73	1.35	1.41
1	E	18	DG	N9-C4	5.67	1.42	1.38
1	C	6	DT	C4-C5	5.66	1.50	1.45
1	C	5	DG	O3'-P	-5.64	1.54	1.61
2	D	18	DC	C2'-C1'	5.62	1.57	1.52
2	F	7	DC	N1-C2	5.60	1.45	1.40
2	D	23	DT	N1-C2	5.60	1.42	1.38
3	B	92	CYS	CB-SG	-5.58	1.72	1.81
1	C	-2	DA	C5-C6	-5.49	1.36	1.41
1	E	14	DT	C2-O2	-5.45	1.18	1.22
1	E	23	DA	N1-C2	5.44	1.39	1.34
2	F	-3	DC	N1-C2	5.40	1.45	1.40
3	A	37	GLU	CB-CG	5.39	1.62	1.52
2	D	22	DT	C4-C5	5.25	1.49	1.45
1	C	6	DT	N1-C2	5.22	1.42	1.38
2	F	12	DT	C4-O4	-5.20	1.18	1.23
2	D	22	DT	C4-O4	5.08	1.27	1.23
2	F	-3	DC	C2-O2	5.08	1.29	1.24
2	F	-4	DG	C6-O6	-5.06	1.19	1.24
2	D	20	DT	N3-C4	-5.05	1.34	1.38
1	C	2	DA	C5-C6	5.05	1.45	1.41

All (78) bond angle outliers are listed below:

Continued on next page...

Continued from previous page...

Mol	Chain	Res	Type	Atoms	Z	Observed(°)	Ideal(°)
3	A	169	ARG	N-CA-CB	11.54	131.37	110.60
1	E	14	DT	O4'-C1'-N1	9.50	114.65	108.00
2	D	12	DA	OP2-P-O3'	9.19	125.42	105.20
1	E	14	DT	O5'-P-OP2	-9.11	97.50	105.70
2	F	8	DT	O4'-C1'-N1	8.81	114.17	108.00
1	E	14	DT	C1'-O4'-C4'	-8.72	101.38	110.10
1	C	7	DG	O4'-C1'-N9	-8.43	102.10	108.00
3	A	9	PRO	CA-N-CD	-8.26	99.93	111.50
3	B	56	GLY	N-CA-C	7.83	132.67	113.10
3	A	181	GLU	N-CA-CB	-7.77	96.61	110.60
3	A	181	GLU	CB-CA-C	7.74	125.88	110.40
2	F	-1	DT	OP2-P-O3'	7.54	121.78	105.20
1	C	7	DG	C5'-C4'-C3'	7.46	127.53	114.10
3	B	9	PRO	CA-N-CD	-7.41	101.12	111.50
3	B	75	LEU	CA-CB-CG	7.37	132.26	115.30
3	A	39	LEU	CA-CB-CG	7.31	132.12	115.30
2	F	13	DC	N1-C2-O2	7.19	123.22	118.90
3	A	185	ARG	NE-CZ-NH1	-7.19	116.71	120.30
1	C	9	DT	C4'-C3'-O3'	7.03	127.28	109.70
2	F	11	DA	N9-C1'-C2'	6.99	125.88	112.60
1	C	3	DA	OP1-P-O3'	-6.75	90.36	105.20
2	D	25	DC	N1-C2-O2	6.73	122.94	118.90
1	C	3	DA	OP2-P-O3'	6.69	119.91	105.20
3	A	148	LEU	CA-CB-CG	6.55	130.37	115.30
2	F	11	DA	O5'-P-OP2	-6.53	99.82	105.70
2	F	12	DT	N1-C1'-C2'	6.51	124.97	112.60
1	C	5	DG	O5'-P-OP1	-6.41	99.93	105.70
3	A	185	ARG	NE-CZ-NH2	6.34	123.47	120.30
2	F	13	DC	N1-C1'-C2'	6.27	124.51	112.60
2	F	-2	DT	N3-C2-O2	-6.22	118.57	122.30
2	D	25	DC	O4'-C1'-N1	6.14	112.30	108.00
2	F	4	DA	O5'-P-OP2	-6.12	100.19	105.70
2	F	1	DT	N1-C1'-C2'	6.04	124.09	112.60
3	B	75	LEU	N-CA-C	6.03	127.28	111.00
2	F	4	DA	OP2-P-O3'	6.00	118.39	105.20
3	B	142	ARG	NE-CZ-NH2	-6.00	117.30	120.30
2	D	24	DT	O4'-C1'-N1	5.99	112.19	108.00
1	C	-3	DG	OP1-P-O3'	5.95	118.28	105.20
3	A	64	LEU	CA-CB-CG	5.94	128.97	115.30
2	F	12	DT	OP1-P-O3'	5.92	118.22	105.20
1	E	14	DT	C3'-C2'-C1'	-5.90	95.42	102.50

Continued on next page...

Continued from previous page...

Mol	Chain	Res	Type	Atoms	Z	Observed(°)	Ideal(°)
3	A	169	ARG	CB-CA-C	-5.89	98.62	110.40
1	C	9	DT	C2'-C3'-O3'	-5.88	93.21	112.60
1	C	-2	DA	O4'-C1'-N9	-5.83	103.92	108.00
1	C	8	DA	O5'-P-OP1	-5.78	100.50	105.70
2	F	7	DC	N1-C1'-C2'	5.74	123.50	112.60
2	F	7	DC	O4'-C1'-N1	5.71	112.00	108.00
1	E	20	DA	OP2-P-O3'	5.69	117.72	105.20
2	F	-1	DT	N3-C2-O2	-5.65	118.91	122.30
1	E	14	DT	N1-C1'-C2'	5.54	123.13	112.60
2	D	19	DA	C5'-C4'-C3'	5.50	124.00	114.10
3	A	124	LEU	CB-CG-CD1	-5.48	101.69	111.00
3	A	63	TYR	N-CA-C	-5.48	96.21	111.00
3	A	181	GLU	CA-CB-CG	5.46	125.41	113.40
1	E	15	DA	N9-C1'-C2'	5.45	122.96	112.60
1	E	22	DA	N9-C1'-C2'	5.41	122.87	112.60
2	F	12	DT	N3-C4-O4	-5.38	116.67	119.90
3	B	187	LEU	CA-CB-CG	5.37	127.65	115.30
3	A	75	LEU	N-CA-C	5.37	125.50	111.00
1	E	16	DG	N9-C1'-C2'	5.36	122.78	112.60
3	A	138	ASP	CB-CG-OD1	5.35	123.11	118.30
1	C	7	DG	C5-N7-C8	5.33	106.96	104.30
2	F	1	DT	OP2-P-O3'	5.28	116.82	105.20
2	F	2	DT	N3-C2-O2	-5.25	119.15	122.30
3	A	196	ILE	CB-CA-C	-5.18	101.23	111.60
1	E	19	DT	N3-C2-O2	-5.17	119.20	122.30
3	A	192	ASP	CB-CG-OD2	5.17	122.95	118.30
1	E	15	DA	OP2-P-O3'	5.15	116.52	105.20
2	D	12	DA	OP1-P-O3'	-5.14	93.88	105.20
2	F	5	DC	C1'-O4'-C4'	-5.13	104.97	110.10
1	C	-5	DG	C5-C6-O6	5.12	131.67	128.60
2	D	12	DA	C5'-C4'-O4'	-5.11	99.59	109.30
1	E	18	DG	C5-N7-C8	5.10	106.85	104.30
2	F	-3	DC	N1-C2-O2	5.09	121.95	118.90
1	E	21	DA	N1-C6-N6	5.08	121.64	118.60
2	D	15	DT	C1'-O4'-C4'	-5.06	105.04	110.10
2	F	-2	DT	N1-C2-O2	5.05	127.14	123.10
1	C	-1	DA	N9-C1'-C2'	5.04	122.18	112.60

There are no chirality outliers.

All (8) planarity outliers are listed below:

Mol	Chain	Res	Type	Group
3	A	136	PHE	Sidechain
3	A	169	ARG	Sidechain
3	A	180	ARG	Sidechain
3	A	41	TYR	Sidechain
2	F	-4	DG	Sidechain
2	F	1	DT	Sidechain
2	F	11	DA	Sidechain
2	F	12	DT	Sidechain

5.2 Too-close contacts [i](#)

In the following table, the Non-H and H(model) columns list the number of non-hydrogen atoms and hydrogen atoms in the chain respectively. The H(added) column lists the number of hydrogen atoms added and optimized by MolProbity. The Clashes column lists the number of clashes within the asymmetric unit, whereas Symm-Clashes lists symmetry related clashes.

Mol	Chain	Non-H	H(model)	H(added)	Clashes	Symm-Clashes
1	C	290	0	157	32	0
1	E	290	0	159	40	0
2	D	341	0	196	23	0
2	F	341	0	196	41	0
3	A	1591	0	1632	132	0
3	B	1556	0	1600	130	0
4	A	22	0	11	8	0
4	B	22	0	11	6	0
5	A	58	0	0	34	0
5	B	62	0	0	23	0
5	C	28	0	0	5	0
5	D	14	0	0	0	0
5	E	20	0	0	3	0
5	F	19	0	0	2	0
All	All	4654	0	3962	369	0

The all-atom clashscore is defined as the number of clashes found per 1000 atoms (including hydrogen atoms). The all-atom clashscore for this structure is 44.

All (369) close contacts within the same asymmetric unit are listed below, sorted by their clash magnitude.

Atom-1	Atom-2	Interatomic distance (Å)	Clash overlap (Å)
4:B:678:CMP:C2	4:B:678:CMP:H2	0.97	1.47
4:A:679:CMP:H2	4:A:679:CMP:C2	0.97	1.47

Continued on next page...

Continued from previous page...

Atom-1	Atom-2	Interatomic distance (Å)	Clash overlap (Å)
1:C:9:DT:H2''	2:D:10:DC:C6	1.65	1.29
3:A:15:LEU:HD21	5:A:645:HOH:O	1.30	1.26
3:B:52:LYS:HE3	5:B:658:HOH:O	1.35	1.21
3:A:35:LYS:HE2	5:A:492:HOH:O	1.40	1.19
3:A:61:LEU:HD21	3:B:131:VAL:HG11	1.27	1.11
2:D:25:DC:H2''	2:D:26:DG:C8	1.87	1.07
3:A:104:GLN:HG2	5:A:648:HOH:O	1.54	1.07
3:B:163:MET:CE	5:B:643:HOH:O	2.03	1.04
3:B:52:LYS:HB3	5:B:658:HOH:O	1.55	1.04
2:F:13:DC:C6	2:F:12:DT:H72	1.98	0.99
1:E:17:DT:H2''	1:E:16:DG:C8	1.97	0.99
3:A:169:ARG:HE	3:A:187:LEU:HD23	1.29	0.97
3:A:124:LEU:HD21	4:B:678:CMP:N6	1.82	0.94
1:E:21:DA:H1'	1:E:20:DA:H5'	1.49	0.94
3:B:114:MET:SD	5:B:504:HOH:O	2.27	0.92
2:F:13:DC:H2'	2:F:12:DT:C6	2.03	0.92
3:A:24:PRO:HG3	5:A:647:HOH:O	1.70	0.92
3:A:83:SER:OG	4:A:679:CMP:O5'	1.89	0.90
2:F:11:DA:H2''	2:F:10:DG:H5'	1.52	0.90
3:A:169:ARG:HE	3:A:187:LEU:CD2	1.84	0.90
3:B:163:MET:HE2	5:B:643:HOH:O	1.64	0.89
2:F:11:DA:H2''	2:F:10:DG:C5'	2.03	0.88
3:B:85:TRP:CH2	5:B:531:HOH:O	2.25	0.88
3:A:124:LEU:CD2	4:B:678:CMP:N6	2.38	0.87
3:B:18:CYS:SG	3:B:97:ILE:HG13	2.15	0.87
3:B:126:VAL:HG11	5:B:632:HOH:O	1.76	0.86
1:E:27:DG:H4'	1:E:26:DC:H5'	1.56	0.86
3:A:166:LYS:CD	5:A:651:HOH:O	2.24	0.84
3:A:169:ARG:NE	3:A:187:LEU:HD23	1.92	0.84
1:E:14:DT:HO3'	2:F:13:DC:H6	1.24	0.84
3:B:85:TRP:CZ2	5:B:531:HOH:O	2.31	0.83
3:A:71:GLY:HA2	4:A:679:CMP:O3'	1.80	0.81
3:A:77:GLU:HB2	5:A:540:HOH:O	1.79	0.81
3:A:18:CYS:SG	3:A:97:ILE:HG23	2.21	0.81
3:A:76:PHE:HE1	5:B:504:HOH:O	1.65	0.80
2:D:25:DC:H2''	2:D:26:DG:H8	1.47	0.80
3:A:108:VAL:HG21	5:A:649:HOH:O	1.82	0.79
2:F:8:DT:H72	3:A:181:GLU:HB2	1.65	0.79
3:B:122:ARG:HD2	5:B:505:HOH:O	1.81	0.79
3:B:178:CYS:SG	3:B:183:VAL:HG23	2.23	0.78
3:B:163:MET:HE1	5:B:643:HOH:O	1.72	0.77

Continued on next page...

Continued from previous page...

Atom-1	Atom-2	Interatomic distance (Å)	Clash overlap (Å)
2:F:13:DC:H2'	2:F:12:DT:C7	2.15	0.77
2:D:25:DC:H2''	2:D:26:DG:N7	1.97	0.77
2:D:22:DT:H2''	2:D:23:DT:O5'	1.84	0.76
1:E:25:DG:H2''	1:E:24:DA:C8	2.22	0.75
1:C:-5:DG:H2''	1:C:-4:DC:OP2	1.85	0.75
1:C:4:DT:H73	5:C:660:HOH:O	1.86	0.74
5:A:640:HOH:O	3:B:51:ILE:CD1	2.36	0.74
3:B:196:ILE:HG22	3:B:204:VAL:HA	1.69	0.73
3:B:159:HIS:HB3	3:B:164:GLN:HB2	1.71	0.73
3:B:152:LYS:HG3	5:B:627:HOH:O	1.88	0.72
3:A:201:LYS:HE3	3:A:203:ILE:HD11	1.71	0.72
2:F:13:DC:H2'	2:F:12:DT:C5	2.25	0.72
3:A:35:LYS:CE	5:A:492:HOH:O	2.16	0.71
1:E:18:DG:H1'	5:E:589:HOH:O	1.89	0.71
3:A:166:LYS:HD3	5:A:651:HOH:O	1.87	0.71
3:A:68:ASP:HA	3:A:119:GLN:HE22	1.56	0.71
3:A:29:LEU:HD23	3:A:88:ALA:HB2	1.72	0.71
3:B:197:SER:O	3:B:203:ILE:HG22	1.91	0.70
3:A:122:ARG:HH21	3:A:125:GLN:HG3	1.56	0.70
2:F:8:DT:H72	3:A:181:GLU:CB	2.22	0.70
3:B:199:HIS:HB3	3:B:201:LYS:HE2	1.73	0.70
1:C:9:DT:H2''	2:D:10:DC:C5	2.26	0.70
1:E:27:DG:H4'	1:E:26:DC:C5'	2.22	0.70
3:B:192:ASP:HB2	5:B:644:HOH:O	1.92	0.69
2:F:8:DT:C7	3:A:181:GLU:HB2	2.22	0.69
3:A:15:LEU:CD2	5:A:645:HOH:O	2.07	0.69
3:A:149:ASN:HA	3:A:152:LYS:HE2	1.72	0.69
3:A:30:ILE:HB	3:A:86:VAL:HB	1.74	0.69
1:E:14:DT:H1'	2:F:13:DC:C5	2.28	0.69
1:E:27:DG:H2''	1:E:26:DC:OP2	1.93	0.68
3:A:43:VAL:HG11	5:A:645:HOH:O	1.92	0.68
3:B:18:CYS:HB3	3:B:96:GLU:H	1.58	0.68
5:F:596:HOH:O	3:A:186:ILE:HD11	1.93	0.68
3:B:122:ARG:HH21	3:B:125:GLN:HE22	1.41	0.68
2:F:4:DA:H2'	2:F:3:DT:H71	1.77	0.68
1:E:19:DT:H2''	1:E:18:DG:C8	2.29	0.67
3:A:169:ARG:HB3	3:A:183:VAL:HG11	1.76	0.67
3:A:124:LEU:CD2	4:B:678:CMP:HN61	2.06	0.66
3:B:102:PHE:HA	3:B:105:LEU:HD23	1.78	0.66
3:A:13:TRP:CZ3	3:A:109:ASN:HB3	2.30	0.66
3:A:16:SER:HB3	5:A:558:HOH:O	1.95	0.65

Continued on next page...

Continued from previous page...

Atom-1	Atom-2	Interatomic distance (Å)	Clash overlap (Å)
3:B:159:HIS:CE1	3:B:203:ILE:HG12	2.30	0.65
2:D:25:DC:C2'	2:D:26:DG:C8	2.74	0.65
1:C:3:DA:H2''	1:C:4:DT:H5'	1.78	0.65
3:B:18:CYS:SG	3:B:97:ILE:CG1	2.85	0.65
3:A:71:GLY:HA2	4:A:679:CMP:P	2.37	0.65
2:D:20:DT:H2''	2:D:21:DT:O5'	1.96	0.65
3:A:110:PRO:HG2	5:A:567:HOH:O	1.95	0.65
1:E:17:DT:H2''	1:E:16:DG:N7	2.12	0.64
3:A:169:ARG:HB3	3:A:183:VAL:CG1	2.26	0.64
3:A:130:LYS:HE3	5:A:650:HOH:O	1.97	0.64
5:A:640:HOH:O	3:B:51:ILE:HD12	1.95	0.64
2:F:11:DA:H2''	2:F:10:DG:H5''	1.80	0.64
1:C:9:DT:H2''	2:D:10:DC:H6	1.56	0.64
1:E:20:DA:H1'	1:E:19:DT:H5''	1.80	0.64
2:F:6:DA:H1'	2:F:5:DC:C6	2.33	0.64
2:D:16:DC:H6	2:D:16:DC:H5''	1.62	0.64
3:A:49:VAL:HG22	3:A:86:VAL:HG22	1.80	0.64
3:B:100:LYS:HD3	3:B:103:ARG:NH1	2.13	0.63
2:F:13:DC:H2''	2:F:12:DT:O5'	1.98	0.63
2:D:14:DA:H2''	2:D:15:DT:H6	1.63	0.63
3:A:37:GLU:HG2	3:A:38:THR:H	1.64	0.63
2:F:13:DC:H2'	2:F:12:DT:H6	1.60	0.63
2:F:10:DG:H2''	2:F:9:DA:OP2	1.99	0.63
2:F:8:DT:C7	3:A:181:GLU:HG3	2.28	0.63
1:E:14:DT:O3'	2:F:13:DC:H6	1.80	0.62
1:E:15:DA:OP2	1:E:15:DA:H8	1.81	0.62
2:F:13:DC:H2''	2:F:12:DT:C5'	2.28	0.62
2:D:14:DA:H2''	2:D:15:DT:C6	2.34	0.62
3:A:162:GLY:H	3:A:209:ARG:HD2	1.65	0.62
3:A:77:GLU:HG3	3:A:78:GLU:H	1.64	0.62
3:B:203:ILE:HG21	5:B:500:HOH:O	1.99	0.62
3:B:41:TYR:HD2	3:B:69:PHE:CE1	2.17	0.62
2:F:13:DC:N1	2:F:12:DT:H72	2.15	0.61
3:A:207:GLY:O	3:A:209:ARG:HD3	2.01	0.61
3:B:31:HIS:CD2	5:B:531:HOH:O	2.53	0.61
3:A:166:LYS:HD2	5:A:651:HOH:O	1.92	0.61
3:A:100:LYS:HG3	5:A:646:HOH:O	2.00	0.60
1:C:9:DT:C2'	2:D:10:DC:C6	2.61	0.60
5:A:640:HOH:O	3:B:51:ILE:HD13	1.99	0.60
3:A:97:ILE:O	3:A:97:ILE:HD12	2.02	0.60
3:B:203:ILE:O	3:B:203:ILE:HG23	2.02	0.59

Continued on next page...

Continued from previous page...

Atom-1	Atom-2	Interatomic distance (Å)	Clash overlap (Å)
3:A:85:TRP:HH2	5:A:487:HOH:O	1.83	0.59
3:A:13:TRP:HH2	3:A:105:LEU:O	1.86	0.59
1:C:3:DA:C4	1:C:4:DT:C5	2.90	0.59
3:A:23:TYR:CD2	3:A:29:LEU:HD22	2.37	0.59
2:D:10:DC:N4	2:F:11:DA:N6	2.51	0.59
3:A:29:LEU:HD11	3:A:94:VAL:HG21	1.85	0.59
2:D:18:DC:H2''	2:D:19:DA:OP2	2.03	0.59
1:C:7:DG:N2	5:C:479:HOH:O	2.36	0.58
2:F:6:DA:P	2:F:6:DA:H3'	2.44	0.58
3:B:98:SER:OG	3:B:101:LYS:HB2	2.04	0.58
3:A:63:TYR:O	3:A:64:LEU:HD12	2.04	0.58
3:A:71:GLY:HA2	4:A:679:CMP:O1P	2.04	0.58
1:E:21:DA:C1'	1:E:20:DA:H5'	2.31	0.58
3:B:150:LEU:HB3	3:B:165:ILE:HD13	1.87	0.56
2:D:25:DC:C2'	2:D:26:DG:N7	2.67	0.56
3:B:17:HIS:H	3:B:17:HIS:CD2	2.22	0.56
1:C:3:DA:C2	1:C:4:DT:C2	2.93	0.56
3:B:188:LYS:NZ	3:B:188:LYS:HB3	2.19	0.56
1:C:3:DA:C8	1:C:4:DT:H71	2.41	0.56
1:E:20:DA:H1'	1:E:19:DT:C5'	2.35	0.56
3:B:102:PHE:CE2	3:B:106:ILE:HD11	2.41	0.56
3:A:106:ILE:HD13	3:A:113:LEU:HD13	1.87	0.56
3:B:10:THR:HG23	3:B:112:ILE:HG23	1.87	0.56
3:B:186:ILE:O	3:B:189:MET:HB3	2.06	0.56
3:A:16:SER:HA	5:A:558:HOH:O	2.05	0.56
3:A:176:VAL:HG12	3:A:178:CYS:SG	2.46	0.55
1:E:14:DT:H1'	2:F:13:DC:C6	2.42	0.55
3:B:19:HIS:O	3:B:96:GLU:HG2	2.06	0.55
3:A:141:GLY:O	3:A:145:GLN:HG2	2.06	0.55
3:B:198:ALA:O	3:B:199:HIS:HB2	2.06	0.55
5:A:640:HOH:O	3:B:51:ILE:HG21	2.06	0.55
2:F:13:DC:C6	2:F:12:DT:C7	2.84	0.55
2:F:13:DC:H2''	2:F:12:DT:H5'	1.88	0.55
2:F:13:DC:C2'	2:F:12:DT:C6	2.85	0.55
3:A:108:VAL:CG2	5:A:649:HOH:O	2.48	0.55
2:F:11:DA:H4'	5:F:481:HOH:O	2.05	0.55
3:A:40:TYR:HB2	3:A:70:ILE:HB	1.87	0.55
1:E:18:DG:N7	3:B:180:ARG:NH1	2.54	0.55
2:D:22:DT:H2''	2:D:23:DT:C5'	2.36	0.55
2:F:8:DT:H71	3:A:181:GLU:HG3	1.88	0.55
3:B:150:LEU:O	3:B:165:ILE:HG21	2.07	0.55

Continued on next page...

Continued from previous page...

Atom-1	Atom-2	Interatomic distance (Å)	Clash overlap (Å)
3:B:143:ILE:HD11	3:B:183:VAL:HG22	1.88	0.55
3:A:45:GLY:HA3	3:A:92:CYS:HB3	1.87	0.55
3:B:32:GLN:HG3	3:B:84:ALA:HA	1.88	0.54
2:F:5:DC:H2''	2:F:4:DA:N7	2.22	0.54
3:A:43:VAL:CG1	5:A:645:HOH:O	2.50	0.54
1:C:8:DA:C8	1:C:9:DT:H73	2.42	0.54
2:F:2:DT:C2'	2:F:1:DT:H71	2.38	0.54
3:A:52:LYS:HA	3:A:57:LYS:O	2.08	0.54
3:B:169:ARG:HG2	3:B:183:VAL:HG12	1.90	0.54
3:A:169:ARG:NE	3:A:187:LEU:CD2	2.58	0.54
3:B:9:PRO:HG2	3:B:11:LEU:H	1.73	0.54
3:B:24:PRO:HG2	5:B:528:HOH:O	2.07	0.54
1:E:25:DG:H2''	1:E:24:DA:N7	2.23	0.54
3:A:169:ARG:N	3:A:169:ARG:CD	2.71	0.53
2:F:8:DT:H72	3:A:181:GLU:CG	2.38	0.53
3:B:64:LEU:HD21	3:B:123:ARG:NH2	2.23	0.53
3:B:150:LEU:HB3	3:B:165:ILE:CD1	2.39	0.53
3:B:40:TYR:HB2	3:B:70:ILE:HB	1.91	0.53
1:C:8:DA:C8	1:C:9:DT:C7	2.92	0.53
3:B:106:ILE:HG23	3:B:113:LEU:HD22	1.89	0.53
3:B:18:CYS:HB3	3:B:95:ALA:HB1	1.90	0.53
3:B:157:MET:SD	3:B:164:GLN:NE2	2.82	0.53
3:A:73:LEU:HD11	3:B:124:LEU:HD13	1.90	0.53
3:B:180:ARG:HG3	3:B:181:GLU:HG2	1.90	0.52
3:B:75:LEU:HD21	3:B:102:PHE:CE2	2.44	0.52
3:B:18:CYS:CB	3:B:95:ALA:HB1	2.40	0.52
1:E:14:DT:H2'	1:E:14:DT:OP2	2.09	0.52
3:A:166:LYS:HG2	3:A:201:LYS:HA	1.91	0.52
3:B:159:HIS:HE1	3:B:204:VAL:O	1.93	0.52
3:A:71:GLY:CA	4:A:679:OMP:O1P	2.58	0.52
3:B:90:THR:HG22	5:B:538:HOH:O	2.09	0.52
3:A:73:LEU:HD21	3:B:124:LEU:HB3	1.92	0.52
3:B:139:VAL:CG1	3:B:186:ILE:HD12	2.40	0.52
1:C:3:DA:C4	1:C:4:DT:C6	2.98	0.52
3:A:203:ILE:N	3:A:203:ILE:HD12	2.25	0.51
3:B:180:ARG:HG3	3:B:181:GLU:H	1.76	0.51
3:A:43:VAL:O	3:A:44:LYS:HB2	2.10	0.51
3:B:112:ILE:HD12	3:B:113:LEU:H	1.75	0.51
1:C:7:DG:C4	1:C:8:DA:C6	2.98	0.51
2:F:8:DT:H72	3:A:181:GLU:HG3	1.92	0.51
3:B:139:VAL:HG11	3:B:186:ILE:HD12	1.92	0.51

Continued on next page...

Continued from previous page...

Atom-1	Atom-2	Interatomic distance (Å)	Clash overlap (Å)
3:A:169:ARG:HD2	3:A:169:ARG:N	2.26	0.51
3:A:37:GLU:HG2	3:A:38:THR:N	2.26	0.51
3:A:131:VAL:HG12	3:B:59:MET:SD	2.51	0.51
3:A:19:HIS:O	3:A:95:ALA:HA	2.11	0.51
2:F:2:DT:H2'	2:F:1:DT:H71	1.93	0.51
3:B:75:LEU:HD11	3:B:102:PHE:HD2	1.76	0.50
2:F:11:DA:C2'	2:F:10:DG:H5''	2.41	0.50
3:B:181:GLU:O	3:B:185:ARG:HG3	2.11	0.50
3:A:43:VAL:HB	3:A:93:GLU:HG3	1.93	0.50
3:B:143:ILE:HD11	3:B:183:VAL:HA	1.92	0.50
3:B:167:ILE:HB	5:B:547:HOH:O	2.11	0.50
3:A:97:ILE:HD13	3:A:102:PHE:HB2	1.94	0.50
3:A:168:THR:HG22	3:A:171:GLU:HG3	1.93	0.50
3:A:169:ARG:CZ	3:A:187:LEU:HD23	2.40	0.50
3:A:199:HIS:O	3:A:199:HIS:ND1	2.44	0.50
3:B:41:TYR:O	3:B:94:VAL:HA	2.11	0.50
3:B:18:CYS:HB3	3:B:96:GLU:N	2.24	0.50
1:E:24:DA:H2''	1:E:23:DA:C8	2.47	0.49
3:A:77:GLU:HG3	3:A:78:GLU:N	2.28	0.49
3:B:106:ILE:HD12	3:B:113:LEU:HB2	1.93	0.49
3:A:184:GLY:O	5:A:653:HOH:O	2.19	0.49
3:B:71:GLY:HA2	4:B:678:CMP:O1P	2.13	0.49
1:E:14:DT:C2	2:F:13:DC:C5	3.01	0.49
3:B:47:VAL:HG13	3:B:86:VAL:HG13	1.95	0.49
3:B:57:LYS:HG2	3:B:58:GLU:N	2.27	0.49
3:B:119:GLN:O	3:B:123:ARG:HG3	2.13	0.48
1:C:3:DA:C8	1:C:4:DT:C7	2.95	0.48
1:C:3:DA:C2'	1:C:4:DT:H5'	2.44	0.48
1:C:-2:DA:C6	1:C:-1:DA:C6	3.00	0.48
3:A:159:HIS:ND1	3:A:203:ILE:HG12	2.28	0.48
3:A:16:SER:CB	5:A:558:HOH:O	2.57	0.48
3:B:150:LEU:HD21	3:B:167:ILE:HD13	1.96	0.48
3:B:61:LEU:O	3:B:62:SER:HB2	2.12	0.48
2:D:19:DA:H2''	2:D:20:DT:OP2	2.14	0.48
1:E:21:DA:H2''	1:E:20:DA:O5'	2.13	0.48
1:C:3:DA:C6	1:C:4:DT:C4	3.02	0.48
3:A:30:ILE:HG23	3:A:82:ARG:HG2	1.96	0.48
3:A:131:VAL:CG1	3:B:59:MET:SD	3.01	0.48
3:B:60:ILE:HG13	3:B:174:GLN:HB3	1.96	0.48
3:B:116:LEU:O	3:B:119:GLN:HB2	2.14	0.48
3:A:182:THR:HA	3:A:185:ARG:HG3	1.96	0.47

Continued on next page...

Continued from previous page...

Atom-1	Atom-2	Interatomic distance (Å)	Clash overlap (Å)
1:C:7:DG:H2''	1:C:8:DA:N7	2.28	0.47
3:A:166:LYS:HB3	5:A:651:HOH:O	2.14	0.47
3:B:17:HIS:N	3:B:17:HIS:CD2	2.81	0.47
2:D:14:DA:C8	2:D:15:DT:H72	2.49	0.47
3:B:41:TYR:HD2	3:B:69:PHE:CD1	2.33	0.47
3:A:24:PRO:HD2	3:A:27:SER:OG	2.15	0.47
1:C:3:DA:C5	1:C:4:DT:C5	3.02	0.47
3:A:181:GLU:H	3:A:181:GLU:HG2	1.38	0.47
1:C:-3:DG:H5''	5:C:607:HOH:O	2.14	0.47
2:D:13:DG:OP2	3:B:139:VAL:HB	2.15	0.47
3:A:107:GLN:HA	3:A:107:GLN:HE21	1.81	0.46
3:A:102:PHE:O	3:A:105:LEU:HB2	2.15	0.46
1:E:16:DG:H1'	1:E:15:DA:C8	2.51	0.46
3:A:38:THR:HG22	3:A:39:LEU:H	1.81	0.46
3:A:166:LYS:CB	5:A:651:HOH:O	2.63	0.46
3:A:193:GLN:O	3:A:194:ASN:HB2	2.15	0.46
3:A:201:LYS:CE	3:A:203:ILE:HD11	2.42	0.46
3:A:197:SER:HB2	3:A:203:ILE:HD13	1.97	0.46
3:B:41:TYR:CD2	3:B:69:PHE:CE1	3.02	0.46
1:E:18:DG:C6	1:E:17:DT:O4	2.69	0.46
3:A:30:ILE:CG2	3:A:82:ARG:HG2	2.46	0.46
3:A:181:GLU:O	3:A:185:ARG:HG2	2.16	0.46
3:B:38:THR:H	3:B:82:ARG:HH22	1.63	0.46
3:A:16:SER:CA	5:A:558:HOH:O	2.61	0.45
3:B:147:LEU:HD22	3:B:202:THR:HG21	1.97	0.45
3:A:54:GLU:O	3:A:55:GLU:HB2	2.17	0.45
3:B:106:ILE:CG2	3:B:113:LEU:HD22	2.47	0.45
3:A:128:SER:HB3	3:B:61:LEU:HD11	1.99	0.45
1:C:3:DA:H1'	1:C:4:DT:H5'	1.98	0.45
3:A:20:ILE:HG13	3:A:95:ALA:HB2	1.97	0.45
3:A:13:TRP:O	3:A:17:HIS:ND1	2.50	0.45
3:A:45:GLY:HA3	3:A:92:CYS:CB	2.47	0.45
3:B:42:ILE:CG1	3:B:70:ILE:HD11	2.47	0.45
3:A:68:ASP:HB3	3:A:123:ARG:NH2	2.31	0.45
3:A:150:LEU:HA	3:A:153:GLN:HB2	1.98	0.45
3:A:106:ILE:HG12	3:A:113:LEU:HB2	1.99	0.45
3:A:83:SER:OG	4:A:679:CMP:P	2.75	0.45
3:B:180:ARG:HG3	3:B:181:GLU:N	2.32	0.45
1:C:8:DA:H2'	1:C:9:DT:H71	1.99	0.45
3:B:102:PHE:HA	3:B:105:LEU:CD2	2.46	0.44
3:B:17:HIS:H	3:B:17:HIS:HD2	1.63	0.44

Continued on next page...

Continued from previous page...

Atom-1	Atom-2	Interatomic distance (Å)	Clash overlap (Å)
3:A:201:LYS:HE2	5:A:652:HOH:O	2.17	0.44
3:A:68:ASP:HA	3:A:119:GLN:NE2	2.27	0.44
2:D:26:DG:C6	1:E:27:DG:N2	2.85	0.44
3:B:83:SER:OG	4:B:678:CMP:H5'1	2.18	0.44
3:B:42:ILE:HG13	3:B:70:ILE:HD11	2.00	0.44
3:A:184:GLY:HA2	5:A:653:HOH:O	2.17	0.44
3:B:26:LYS:HB2	3:B:26:LYS:NZ	2.33	0.44
3:B:87:ARG:HG2	3:B:88:ALA:H	1.82	0.44
1:C:5:DG:N7	3:A:180:ARG:NH1	2.66	0.44
1:E:17:DT:C2'	1:E:16:DG:C8	2.86	0.44
3:B:54:GLU:H	3:B:54:GLU:CD	2.20	0.44
1:E:14:DT:H3'	5:E:670:HOH:O	2.18	0.44
3:B:184:GLY:HA2	3:B:187:LEU:HD22	2.00	0.43
1:E:19:DT:H2'	3:B:180:ARG:HH11	1.83	0.43
1:E:23:DA:H5''	5:E:581:HOH:O	2.18	0.43
3:A:11:LEU:HG	5:A:508:HOH:O	2.16	0.43
1:E:16:DG:H2''	1:E:15:DA:C8	2.53	0.43
2:D:16:DC:H5''	2:D:16:DC:C6	2.49	0.43
3:B:122:ARG:O	3:B:126:VAL:HG13	2.19	0.43
3:B:38:THR:H	3:B:82:ARG:NH2	2.16	0.43
1:E:16:DG:H1'	1:E:15:DA:N7	2.33	0.43
3:A:160:PRO:HA	3:A:209:ARG:NH1	2.33	0.43
3:B:147:LEU:HD23	3:B:147:LEU:HA	1.69	0.43
1:C:-1:DA:H2''	1:C:1:DA:OP2	2.18	0.43
1:E:18:DG:C4	1:E:17:DT:C4	3.07	0.43
3:B:50:LEU:O	3:B:84:ALA:HB1	2.19	0.43
1:C:2:DA:H5'	5:C:604:HOH:O	2.19	0.43
1:E:15:DA:H2''	1:E:14:DT:C6	2.54	0.43
3:A:100:LYS:HE3	5:A:646:HOH:O	2.18	0.43
3:B:178:CYS:SG	3:B:179:SER:N	2.92	0.43
3:B:203:ILE:CG2	5:B:500:HOH:O	2.62	0.43
3:B:23:TYR:CG	3:B:29:LEU:HD22	2.54	0.43
3:B:43:VAL:HG12	3:B:43:VAL:O	2.19	0.43
3:B:90:THR:HG22	5:B:488:HOH:O	2.18	0.43
3:A:118:ALA:HB2	5:A:641:HOH:O	2.19	0.42
3:B:122:ARG:HH21	3:B:125:GLN:NE2	2.13	0.42
3:B:90:THR:HA	5:B:488:HOH:O	2.18	0.42
1:E:14:DT:C2	2:F:13:DC:C4	3.07	0.42
3:A:208:THR:O	3:A:209:ARG:HB2	2.20	0.42
3:B:97:ILE:HG22	3:B:98:SER:O	2.19	0.42
1:C:3:DA:N3	1:C:4:DT:C6	2.86	0.42

Continued on next page...

Continued from previous page...

Atom-1	Atom-2	Interatomic distance (Å)	Clash overlap (Å)
3:B:153:GLN:HA	3:B:154:PRO:HD2	1.94	0.42
2:F:13:DC:C1'	2:F:12:DT:H72	2.50	0.42
3:A:113:LEU:HD21	3:B:113:LEU:HD23	2.02	0.42
3:B:18:CYS:HA	3:B:96:GLU:O	2.20	0.42
3:A:61:LEU:HD23	3:A:61:LEU:HA	1.79	0.42
2:D:16:DC:H6	2:D:16:DC:C5'	2.31	0.42
3:B:188:LYS:HZ2	3:B:188:LYS:HB3	1.83	0.42
1:C:-3:DG:H1'	1:C:-2:DA:C8	2.55	0.42
2:F:13:DC:C2'	2:F:12:DT:C7	2.95	0.42
3:A:28:THR:HG23	3:A:87:ARG:CZ	2.50	0.41
3:B:11:LEU:HB3	5:B:636:HOH:O	2.18	0.41
3:B:11:LEU:HA	3:B:11:LEU:HD22	1.84	0.41
3:B:120:MET:O	3:B:123:ARG:N	2.52	0.41
1:E:17:DT:H2''	1:E:16:DG:H8	1.73	0.41
3:A:167:ILE:HG23	3:A:168:THR:N	2.35	0.41
1:E:20:DA:H2''	1:E:19:DT:H5'	2.01	0.41
2:F:7:DC:H2''	2:F:6:DA:OP2	2.19	0.41
3:B:126:VAL:CG1	5:B:632:HOH:O	2.52	0.41
3:B:180:ARG:O	3:B:183:VAL:HB	2.20	0.41
3:A:185:ARG:H	3:A:185:ARG:HG2	1.65	0.41
3:A:18:CYS:SG	3:A:97:ILE:CG2	3.02	0.41
3:A:38:THR:HB	3:A:40:TYR:CE1	2.55	0.41
3:A:34:GLU:O	3:A:81:GLU:HA	2.21	0.41
3:B:141:GLY:O	3:B:144:ALA:HB3	2.20	0.41
3:A:83:SER:OG	4:A:679:CMP:C5'	2.69	0.41
3:B:57:LYS:HG2	3:B:58:GLU:H	1.85	0.41
3:B:181:GLU:HG2	3:B:181:GLU:H	1.40	0.41
3:B:75:LEU:HD21	3:B:102:PHE:HE2	1.86	0.41
3:A:43:VAL:O	3:A:43:VAL:HG12	2.21	0.41
1:C:-2:DA:H3'	5:C:611:HOH:O	2.20	0.41
3:A:143:ILE:HG12	3:A:176:VAL:HG21	2.02	0.40
1:E:19:DT:C6	3:B:180:ARG:NH1	2.89	0.40
3:B:64:LEU:HD23	3:B:68:ASP:HB3	2.04	0.40
1:C:-3:DG:H1'	1:C:-2:DA:N7	2.35	0.40
1:E:24:DA:H8	1:E:24:DA:OP2	2.04	0.40
1:E:26:DC:C4	1:E:25:DG:O6	2.74	0.40
3:B:77:GLU:O	3:B:80:GLN:HG3	2.21	0.40
1:C:-1:DA:H1'	1:C:1:DA:C8	2.56	0.40
2:F:11:DA:C2'	2:F:10:DG:C5'	2.87	0.40

There are no symmetry-related clashes.

5.3 Torsion angles [i](#)

5.3.1 Protein backbone [i](#)

In the following table, the Percentiles column shows the percent Ramachandran outliers of the chain as a percentile score with respect to all X-ray entries followed by that with respect to entries of similar resolution.

The Analysed column shows the number of residues for which the backbone conformation was analysed, and the total number of residues.

Mol	Chain	Analysed	Favoured	Allowed	Outliers	Percentiles	
3	A	199/209 (95%)	161 (81%)	25 (13%)	13 (6%)	1	2
3	B	195/209 (93%)	156 (80%)	29 (15%)	10 (5%)	2	3
All	All	394/418 (94%)	317 (80%)	54 (14%)	23 (6%)	1	2

All (23) Ramachandran outliers are listed below:

Mol	Chain	Res	Type
3	A	16	SER
3	A	28	THR
3	A	55	GLU
3	A	75	LEU
3	A	208	THR
3	B	56	GLY
3	B	75	LEU
3	B	83	SER
3	B	155	ASP
3	B	194	ASN
3	B	199	HIS
3	A	34	GLU
3	A	36	ALA
3	A	29	LEU
3	A	44	LYS
3	A	160	PRO
3	B	62	SER
3	A	71	GLY
3	B	158	THR
3	A	27	SER
3	A	180	ARG
3	B	160	PRO
3	B	167	ILE

5.3.2 Protein sidechains [i](#)

In the following table, the Percentiles column shows the percent sidechain outliers of the chain as a percentile score with respect to all X-ray entries followed by that with respect to entries of similar resolution.

The Analysed column shows the number of residues for which the sidechain conformation was analysed, and the total number of residues.

Mol	Chain	Analysed	Rotameric	Outliers	Percentiles
3	A	173/180 (96%)	146 (84%)	27 (16%)	2 7
3	B	170/180 (94%)	147 (86%)	23 (14%)	4 9
All	All	343/360 (95%)	293 (85%)	50 (15%)	3 7

All (50) residues with a non-rotameric sidechain are listed below:

Mol	Chain	Res	Type
3	A	15	LEU
3	A	28	THR
3	A	35	LYS
3	A	46	SER
3	A	47	VAL
3	A	50	LEU
3	A	82	ARG
3	A	83	SER
3	A	105	LEU
3	A	107	GLN
3	A	113	LEU
3	A	122	ARG
3	A	124	LEU
3	A	125	GLN
3	A	130	LYS
3	A	148	LEU
3	A	163	MET
3	A	168	THR
3	A	169	ARG
3	A	170	GLN
3	A	180	ARG
3	A	181	GLU
3	A	185	ARG
3	A	201	LYS
3	A	204	VAL
3	A	206	TYR
3	A	209	ARG

Continued on next page...

Continued from previous page...

Mol	Chain	Res	Type
3	B	10	THR
3	B	11	LEU
3	B	17	HIS
3	B	29	LEU
3	B	35	LYS
3	B	38	THR
3	B	54	GLU
3	B	61	LEU
3	B	64	LEU
3	B	77	GLU
3	B	85	TRP
3	B	89	LYS
3	B	100	LYS
3	B	105	LEU
3	B	122	ARG
3	B	133	ASN
3	B	139	VAL
3	B	171	GLU
3	B	178	CYS
3	B	181	GLU
3	B	187	LEU
3	B	188	LYS
3	B	195	LEU

Some sidechains can be flipped to improve hydrogen bonding and reduce clashes. All (12) such sidechains are listed below:

Mol	Chain	Res	Type
3	A	21	HIS
3	A	31	HIS
3	A	80	GLN
3	A	107	GLN
3	A	170	GLN
3	B	21	HIS
3	B	31	HIS
3	B	32	GLN
3	B	104	GLN
3	B	125	GLN
3	B	153	GLN
3	B	164	GLN

5.3.3 RNA [i](#)

There are no RNA molecules in this entry.

5.4 Non-standard residues in protein, DNA, RNA chains [i](#)

There are no non-standard protein/DNA/RNA residues in this entry.

5.5 Carbohydrates [i](#)

There are no carbohydrates in this entry.

5.6 Ligand geometry [i](#)

2 ligands are modelled in this entry.

In the following table, the Counts columns list the number of bonds (or angles) for which Mogul statistics could be retrieved, the number of bonds (or angles) that are observed in the model and the number of bonds (or angles) that are defined in the Chemical Component Dictionary. The Link column lists molecule types, if any, to which the group is linked. The Z score for a bond length (or angle) is the number of standard deviations the observed value is removed from the expected value. A bond length (or angle) with $|Z| > 2$ is considered an outlier worth inspection. RMSZ is the root-mean-square of all Z scores of the bond lengths (or angles).

Mol	Type	Chain	Res	Link	Bond lengths			Bond angles		
					Counts	RMSZ	# Z > 2	Counts	RMSZ	# Z > 2
4	CMP	A	679	-	22,25,25	1.04	2 (9%)	24,39,39	2.18	4 (16%)
4	CMP	B	678	-	22,25,25	1.39	4 (18%)	24,39,39	2.00	6 (25%)

In the following table, the Chirals column lists the number of chiral outliers, the number of chiral centers analysed, the number of these observed in the model and the number defined in the Chemical Component Dictionary. Similar counts are reported in the Torsion and Rings columns. '-' means no outliers of that kind were identified.

Mol	Type	Chain	Res	Link	Chirals	Torsions	Rings
4	CMP	A	679	-	-	0/0/31/31	0/4/4/4
4	CMP	B	678	-	-	0/0/31/31	0/4/4/4

All (6) bond length outliers are listed below:

Mol	Chain	Res	Type	Atoms	Z	Observed(Å)	Ideal(Å)
4	B	678	CMP	O5'-C5'	-3.12	1.41	1.46

Continued on next page...

Continued from previous page...

Mol	Chain	Res	Type	Atoms	Z	Observed(Å)	Ideal(Å)
4	B	678	CMP	C8-N7	-2.50	1.30	1.34
4	A	679	CMP	P-O5'	2.26	1.60	1.57
4	B	678	CMP	C5'-C4'	-2.13	1.48	1.51
4	B	678	CMP	P-O3'	2.11	1.61	1.57
4	A	679	CMP	O3'-C3'	-2.05	1.41	1.44

All (10) bond angle outliers are listed below:

Mol	Chain	Res	Type	Atoms	Z	Observed(°)	Ideal(°)
4	A	679	CMP	O3'-C3'-C4'	-8.42	104.35	110.71
4	B	678	CMP	O3'-C3'-C4'	-5.70	106.41	110.71
4	A	679	CMP	O2P-P-O1P	3.68	120.27	108.73
4	B	678	CMP	O2P-P-O1P	3.39	119.35	108.73
4	B	678	CMP	O3'-C3'-C2'	3.05	118.60	115.61
4	B	678	CMP	O2P-P-O5'	2.97	114.41	107.16
4	B	678	CMP	O5'-P-O1P	-2.67	104.29	110.44
4	A	679	CMP	O3'-C3'-C2'	2.59	118.15	115.61
4	A	679	CMP	O5'-C5'-C4'	2.02	110.43	105.71
4	B	678	CMP	O2P-P-O3'	-2.02	102.34	107.04

There are no chirality outliers.

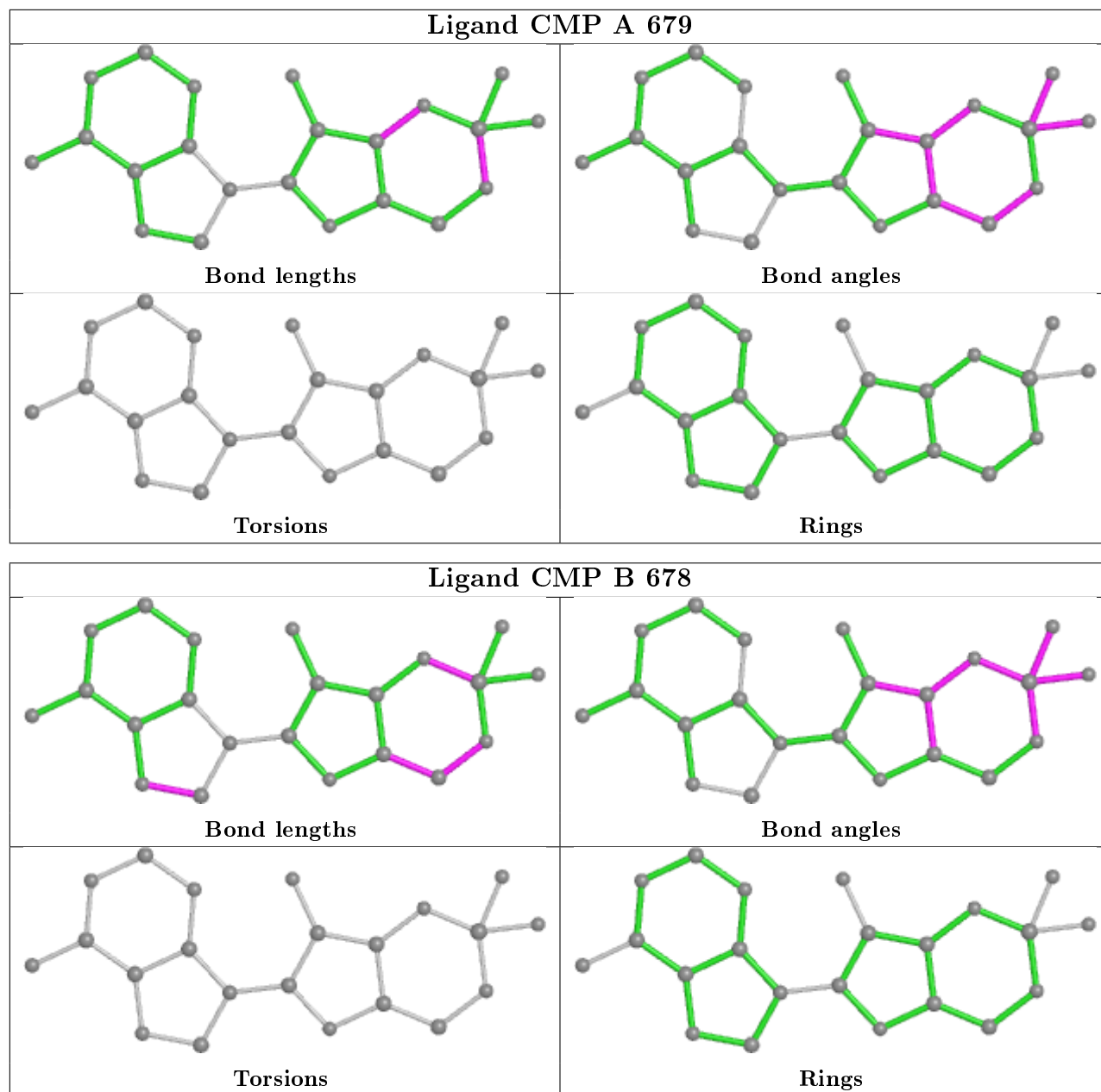
There are no torsion outliers.

There are no ring outliers.

2 monomers are involved in 14 short contacts:

Mol	Chain	Res	Type	Clashes	Symm-Clashes
4	A	679	CMP	8	0
4	B	678	CMP	6	0

The following is a two-dimensional graphical depiction of Mogul quality analysis of bond lengths, bond angles, torsion angles, and ring geometry for all instances of the Ligand of Interest. In addition, ligands with molecular weight > 250 and outliers as shown on the validation Tables will also be included. For torsion angles, if less than 5% of the Mogul distribution of torsion angles is within 10 degrees of the torsion angle in question, then that torsion angle is considered an outlier. Any bond that is central to one or more torsion angles identified as an outlier by Mogul will be highlighted in the graph. For rings, the root-mean-square deviation (RMSD) between the ring in question and similar rings identified by Mogul is calculated over all ring torsion angles. If the average RMSD is greater than 60 degrees and the minimal RMSD between the ring in question and any Mogul-identified rings is also greater than 60 degrees, then that ring is considered an outlier. The outliers are highlighted in purple. The color gray indicates Mogul did not find sufficient equivalents in the CSD to analyse the geometry.



5.7 Other polymers [i](#)

There are no such residues in this entry.

5.8 Polymer linkage issues [i](#)

There are no chain breaks in this entry.

6 Fit of model and data [i](#)

6.1 Protein, DNA and RNA chains [i](#)

In the following table, the column labelled '#RSRZ> 2' contains the number (and percentage) of RSRZ outliers, followed by percent RSRZ outliers for the chain as percentile scores relative to all X-ray entries and entries of similar resolution. The OWAB column contains the minimum, median, 95th percentile and maximum values of the occupancy-weighted average B-factor per residue. The column labelled 'Q< 0.9' lists the number of (and percentage) of residues with an average occupancy less than 0.9.

Mol	Chain	Analysed	<RSRZ>	#RSRZ>2	OWAB(Å ²)	Q<0.9
1	C	14/14 (100%)	-0.77	0 100 100	15, 39, 53, 56	0
1	E	14/14 (100%)	-0.23	0 100 100	31, 50, 56, 56	0
2	D	17/17 (100%)	-0.78	0 100 100	33, 44, 53, 54	0
2	F	17/17 (100%)	-0.79	0 100 100	26, 33, 45, 45	0
3	A	201/209 (96%)	-0.97	0 100 100	3, 21, 46, 53	0
3	B	197/209 (94%)	-0.85	2 (1%) 82 83	3, 21, 44, 53	0
All	All	460/480 (95%)	-0.88	2 (0%) 92 93	3, 23, 50, 56	0

All (2) RSRZ outliers are listed below:

Mol	Chain	Res	Type	RSRZ
3	B	162	GLY	2.4
3	B	157	MET	2.0

6.2 Non-standard residues in protein, DNA, RNA chains [i](#)

There are no non-standard protein/DNA/RNA residues in this entry.

6.3 Carbohydrates [i](#)

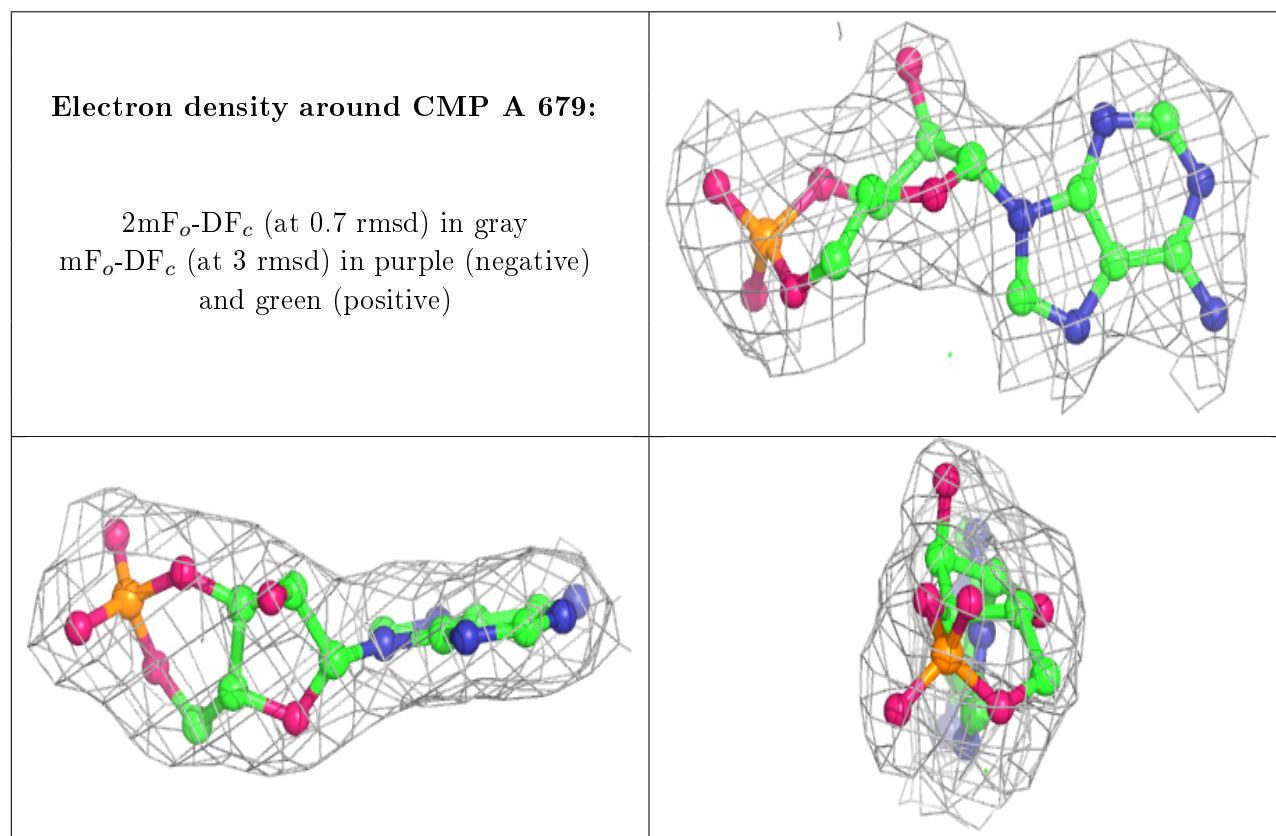
There are no carbohydrates in this entry.

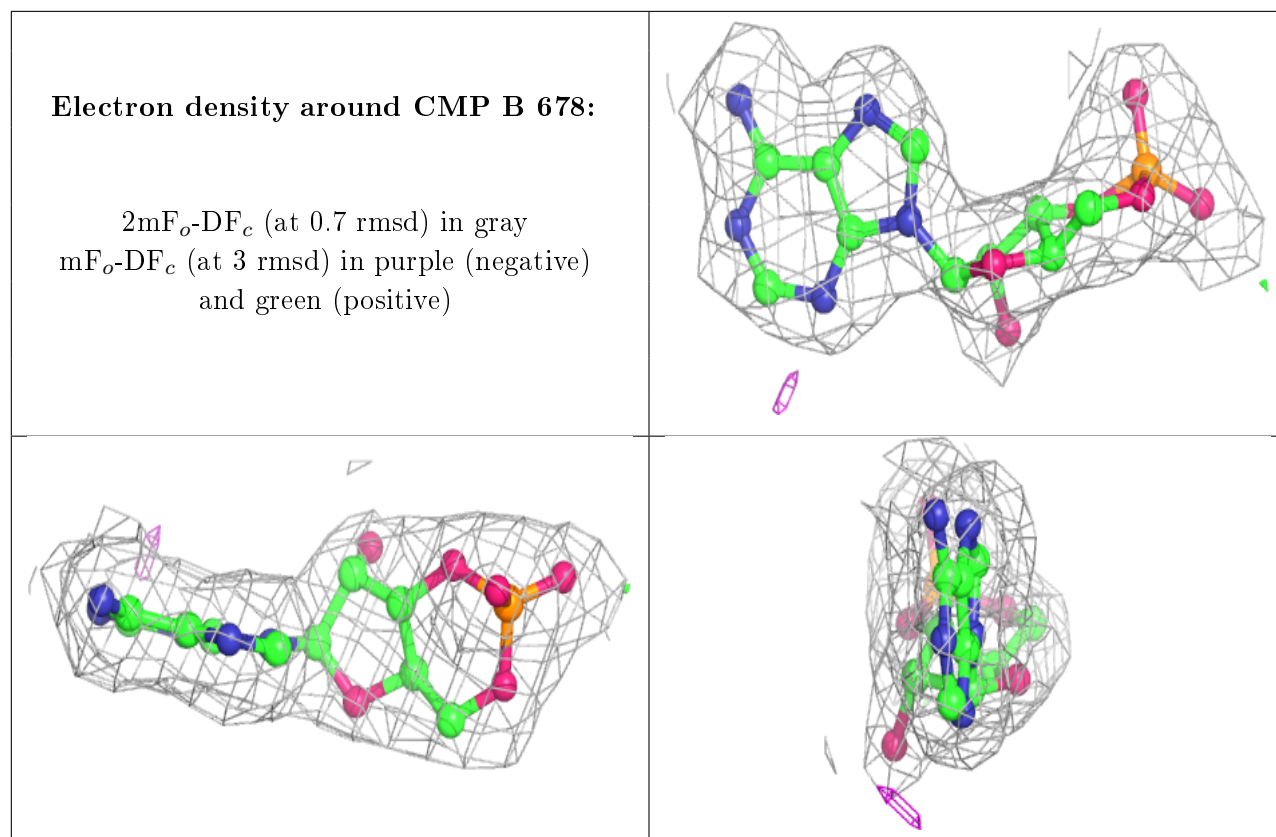
6.4 Ligands [i](#)

In the following table, the Atoms column lists the number of modelled atoms in the group and the number defined in the chemical component dictionary. The B-factors column lists the minimum, median, 95th percentile and maximum values of B factors of atoms in the group. The column labelled 'Q< 0.9' lists the number of atoms with occupancy less than 0.9.

Mol	Type	Chain	Res	Atoms	RSCC	RSR	B-factors(\AA^2)	Q<0.9
4	CMP	A	679	22/22	0.98	0.10	2,10,22,26	0
4	CMP	B	678	22/22	0.98	0.12	2,10,22,24	0

The following is a graphical depiction of the model fit to experimental electron density of all instances of the Ligand of Interest. In addition, ligands with molecular weight > 250 and outliers as shown on the geometry validation Tables will also be included. Each fit is shown from different orientation to approximate a three-dimensional view.





6.5 Other polymers [i](#)

There are no such residues in this entry.