



Full wwPDB X-ray Structure Validation Report ⓘ

May 19, 2026 – 10:12 am BST

PDB ID : 9RMV / pdb_00009rmv
Title : Crystal Structure of the ERH SAFB2 complex
Authors : Falk, S.
Deposited on : 2025-06-18
Resolution : 1.70 Å(reported)

This is a Full wwPDB X-ray Structure Validation Report for a publicly released PDB entry.

We welcome your comments at validation@mail.wwpdb.org

A user guide is available at

<https://www.wwpdb.org/validation/2017/XrayValidationReportHelp>

with specific help available everywhere you see the ⓘ symbol.

The types of validation reports are described at

<http://www.wwpdb.org/validation/2017/FAQs#types>.

The following versions of software and data (see [references ⓘ](#)) were used in the production of this report:

MolProbity	:	4-5-2 with Phenix2.0
Mogul	:	1.8.4, CSD as541be (2020)
Xtriage (Phenix)	:	2.0
EDS	:	3.0
Percentile statistics	:	20250101.v01 (using entries in the PDB archive January 1st 2025)
CCP4	:	9.0.010 (Gargrove)
Density-Fitness	:	1.0.12
Ideal geometry (proteins)	:	Engh & Huber (2001)
Ideal geometry (DNA, RNA)	:	Parkinson et al. (1996)
Validation Pipeline (wwPDB-VP)	:	2.49

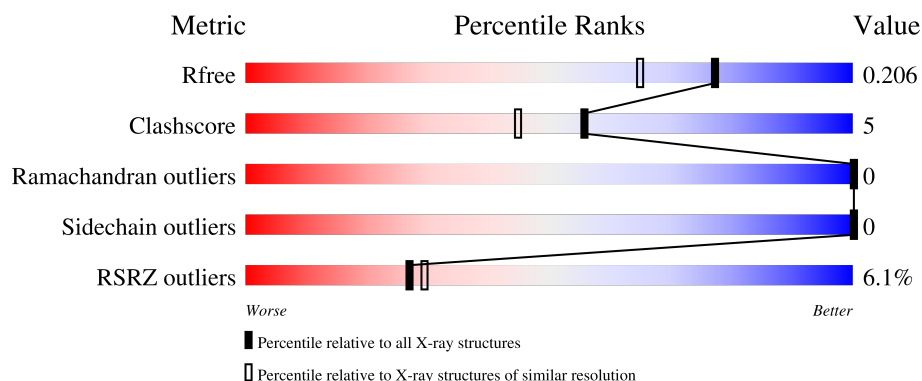
1 Overall quality at a glance

The following experimental techniques were used to determine the structure:

X-RAY DIFFRACTION

The reported resolution of this entry is 1.70 Å.

Percentile scores (ranging between 0-100) for global validation metrics of the entry are shown in the following graphic. The table shows the number of entries on which the scores are based.



Metric	Whole archive (#Entries)	Similar resolution (#Entries, resolution range(Å))
R_{free}	180053	5551 (1.70-1.70)
Clashscore	190562	5924 (1.70-1.70)
Ramachandran outliers	187476	5846 (1.70-1.70)
Sidechain outliers	187428	5846 (1.70-1.70)
RSRZ outliers	180081	5554 (1.70-1.70)

The table below summarises the geometric issues observed across the polymeric chains and their fit to the electron density. The red, orange, yellow and green segments of the lower bar indicate the fraction of residues that contain outliers for ≥ 3 , 2, 1 and 0 types of geometric quality criteria respectively. A grey segment represents the fraction of residues that are not modelled. The numeric value for each fraction is indicated below the corresponding segment, with a dot representing fractions $\leq 5\%$. The upper red bar (where present) indicates the fraction of residues that have poor fit to the electron density. The numeric value is given above the bar.

Mol	Chain	Length	Quality of chain
1	A	108	<div> <div>3%</div> <div>92%</div> <div>6%</div> </div>
1	B	108	<div> <div>5%</div> <div>84%</div> <div>10%</div> <div>6%</div> </div>
2	C	27	<div> <div>11%</div> <div>52%</div> <div>19%</div> <div>30%</div> </div>
2	D	27	<div> <div>15%</div> <div>52%</div> <div>22%</div> <div>26%</div> </div>

The following table lists non-polymeric compounds, carbohydrate monomers and non-standard

residues in protein, DNA, RNA chains that are outliers for geometric or electron-density-fit criteria:

Mol	Type	Chain	Res	Chirality	Geometry	Clashes	Electron density
5	OXM	A	203	-	X	-	-

2 Entry composition [i](#)

There are 7 unique types of molecules in this entry. The entry contains 4322 atoms, of which 2128 are hydrogens and 0 are deuteriums.

In the tables below, the ZeroOcc column contains the number of atoms modelled with zero occupancy, the AltConf column contains the number of residues with at least one atom in alternate conformation and the Trace column contains the number of residues modelled with at most 2 atoms.

- Molecule 1 is a protein called Enhancer of rudimentary homolog.

Mol	Chain	Residues	Atoms						ZeroOcc	AltConf	Trace
1	A	106	Total	C	H	N	O	S	0	6	0
			1773	564	879	147	175	8			
1	B	102	Total	C	H	N	O	S	0	2	0
			1693	539	837	146	164	7			

There are 8 discrepancies between the modelled and reference sequences:

Chain	Residue	Modelled	Actual	Comment	Reference
A	-3	GLY	-	expression tag	UNP P84090
A	-2	PRO	-	expression tag	UNP P84090
A	-1	ASP	-	expression tag	UNP P84090
A	0	SER	-	expression tag	UNP P84090
B	-3	GLY	-	expression tag	UNP P84090
B	-2	PRO	-	expression tag	UNP P84090
B	-1	ASP	-	expression tag	UNP P84090
B	0	SER	-	expression tag	UNP P84090

- Molecule 2 is a protein called Scaffold attachment factor B2.

Mol	Chain	Residues	Atoms						ZeroOcc	AltConf	Trace
2	C	19	Total	C	H	N	O	S	0	0	0
			302	90	157	25	29	1			
2	D	20	Total	C	H	N	O	S	0	0	0
			317	94	164	26	32	1			

There are 10 discrepancies between the modelled and reference sequences:

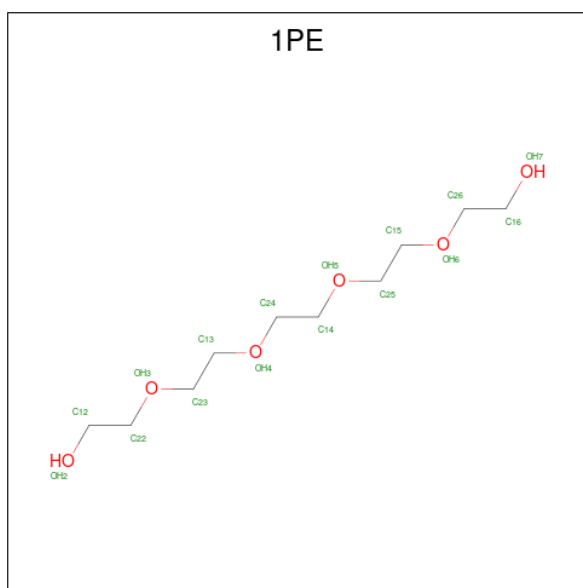
Chain	Residue	Modelled	Actual	Comment	Reference
C	562	GLY	-	expression tag	UNP Q14151
C	563	PRO	-	expression tag	UNP Q14151
C	564	ASP	-	expression tag	UNP Q14151
C	565	SER	-	expression tag	UNP Q14151

Continued on next page...

Continued from previous page...

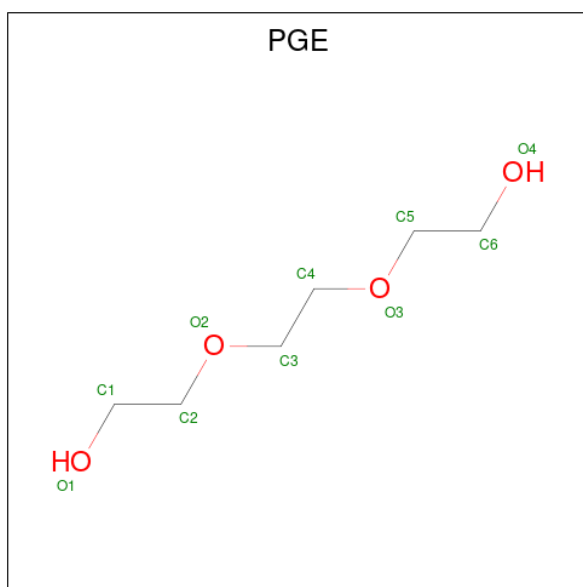
Chain	Residue	Modelled	Actual	Comment	Reference
C	566	MET	-	expression tag	UNP Q14151
D	562	GLY	-	expression tag	UNP Q14151
D	563	PRO	-	expression tag	UNP Q14151
D	564	ASP	-	expression tag	UNP Q14151
D	565	SER	-	expression tag	UNP Q14151
D	566	MET	-	expression tag	UNP Q14151

- Molecule 3 is PENTAETHYLENE GLYCOL (CCD ID: 1PE) (formula: $C_{10}H_{22}O_6$).



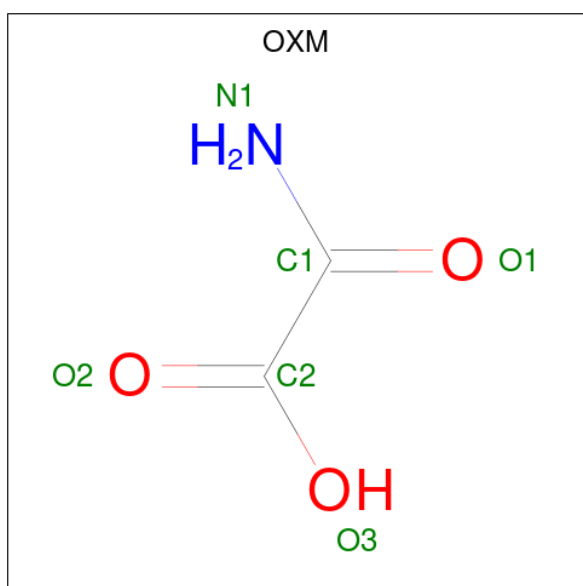
Mol	Chain	Residues	Atoms				ZeroOcc	AltConf
3	A	1	Total	C	H	O	0	0
			38	10	22	6		

- Molecule 4 is TRIETHYLENE GLYCOL (CCD ID: PGE) (formula: $C_6H_{14}O_4$).



Mol	Chain	Residues	Atoms				ZeroOcc	AltConf
4	A	1	Total	C	H	O	0	0
			24	6	14	4		
4	B	1	Total	C	H	O	0	0
			24	6	14	4		

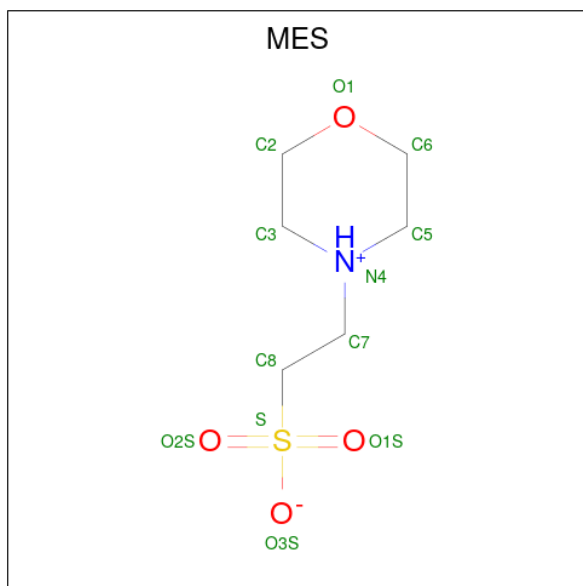
- Molecule 5 is OXAMIC ACID (CCD ID: OXM) (formula: $C_2H_3NO_3$).



Mol	Chain	Residues	Atoms					ZeroOcc	AltConf
5	A	1	Total	C	H	N	O	0	0
			8	2	2	1	3		

- Molecule 6 is 2-(N-MORPHOLINO)-ETHANESULFONIC ACID (CCD ID: MES) (formula:

C₆H₁₃NO₄S).



Mol	Chain	Residues	Atoms					ZeroOcc	AltConf
6	B	1	Total	C	H	N	O	S	
			25	6	13	1	4	1	0
6	B	1	Total	C	H	N	O	S	
			25	6	13	1	4	1	0
6	B	1	Total	C	H	N	O	S	
			25	6	13	1	4	1	0

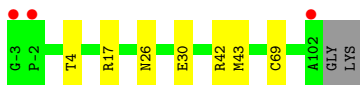
- Molecule 7 is water.

Mol	Chain	Residues	Atoms		ZeroOcc	AltConf
7	A	33	Total	O		
			33	33	0	0
7	B	30	Total	O		
			30	30	0	0
7	C	4	Total	O		
			4	4	0	0
7	D	1	Total	O		
			1	1	0	0

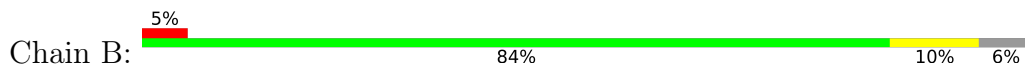
3 Residue-property plots [i](#)

These plots are drawn for all protein, RNA, DNA and oligosaccharide chains in the entry. The first graphic for a chain summarises the proportions of the various outlier classes displayed in the second graphic. The second graphic shows the sequence view annotated by issues in geometry and electron density. Residues are color-coded according to the number of geometric quality criteria for which they contain at least one outlier: green = 0, yellow = 1, orange = 2 and red = 3 or more. A red dot above a residue indicates a poor fit to the electron density ($RSRZ > 2$). Stretches of 2 or more consecutive residues without any outlier are shown as a green connector. Residues present in the sample, but not in the model, are shown in grey.

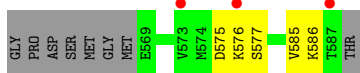
- Molecule 1: Enhancer of rudimentary homolog



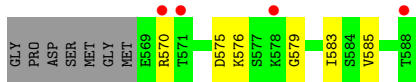
- Molecule 1: Enhancer of rudimentary homolog



- Molecule 2: Scaffold attachment factor B2



- Molecule 2: Scaffold attachment factor B2



4 Data and refinement statistics

Property	Value	Source
Space group	P 1 21 1	Depositor
Cell constants a, b, c, α , β , γ	31.80Å 78.48Å 53.84Å 90.00° 107.05° 90.00°	Depositor
Resolution (Å)	31.21 – 1.70 31.21 – 1.70	Depositor EDS
% Data completeness (in resolution range)	99.8 (31.21-1.70) 99.7 (31.21-1.70)	Depositor EDS
R_{merge}	(Not available)	Depositor
R_{sym}	(Not available)	Depositor
$\langle I/\sigma(I) \rangle$ ¹	1.48 (at 1.70Å)	Xtriage
Refinement program	PHENIX 1.21_5207	Depositor
R, R_{free}	0.183 , 0.206 0.182 , 0.206	Depositor DCC
R_{free} test set	1298 reflections (4.13%)	wwPDB-VP
Wilson B-factor (Å ²)	24.1	Xtriage
Anisotropy	0.191	Xtriage
Bulk solvent k_{sol} (e/Å ³), B_{sol} (Å ²)	0.45 , 47.2	EDS
L-test for twinning ²	$\langle L \rangle = 0.49$, $\langle L^2 \rangle = 0.32$	Xtriage
Estimated twinning fraction	0.038 for h,-k,-h-l	Xtriage
F_o, F_c correlation	0.96	EDS
Total number of atoms	4322	wwPDB-VP
Average B, all atoms (Å ²)	38.0	wwPDB-VP

Xtriage's analysis on translational NCS is as follows: *The largest off-origin peak in the Patterson function is 7.31% of the height of the origin peak. No significant pseudotranslation is detected.*

¹Intensities estimated from amplitudes.

²Theoretical values of $\langle |L| \rangle$, $\langle L^2 \rangle$ for acentric reflections are 0.5, 0.333 respectively for untwinned datasets, and 0.375, 0.2 for perfectly twinned datasets.

5 Model quality [i](#)

5.1 Standard geometry [i](#)

Bond lengths and bond angles in the following residue types are not validated in this section: OXM, MES, 1PE, PGE

The Z score for a bond length (or angle) is the number of standard deviations the observed value is removed from the expected value. A bond length (or angle) with $|Z| > 5$ is considered an outlier worth inspection. RMSZ is the root-mean-square of all Z scores of the bond lengths (or angles).

Mol	Chain	Bond lengths		Bond angles	
		RMSZ	$\# Z > 5$	RMSZ	$\# Z > 5$
1	A	0.20	0/938	0.41	0/1271
1	B	0.20	0/881	0.38	0/1192
2	C	0.14	0/145	0.34	0/193
2	D	0.16	0/153	0.31	0/203
All	All	0.20	0/2117	0.39	0/2859

There are no bond length outliers.

There are no bond angle outliers.

There are no chirality outliers.

There are no planarity outliers.

5.2 Too-close contacts [i](#)

In the following table, the Non-H and H(model) columns list the number of non-hydrogen atoms and hydrogen atoms in the chain respectively. The H(added) column lists the number of hydrogen atoms added and optimized by MolProbity. The Clashes column lists the number of clashes within the asymmetric unit, whereas Symm-Clashes lists symmetry-related clashes.

Mol	Chain	Non-H	H(model)	H(added)	Clashes	Symm-Clashes
1	A	894	879	869	5	0
1	B	856	837	830	6	0
2	C	145	157	157	3	0
2	D	153	164	164	6	0
3	A	16	22	22	0	0
4	A	10	14	14	0	0
4	B	10	14	14	0	0
5	A	6	2	2	1	0
6	B	36	39	39	0	0

Continued on next page...

Continued from previous page...

Mol	Chain	Non-H	H(model)	H(added)	Clashes	Symm-Clashes
7	A	33	0	0	0	0
7	B	30	0	0	1	0
7	C	4	0	0	0	0
7	D	1	0	0	1	0
All	All	2194	2128	2111	20	0

The all-atom clashscore is defined as the number of clashes found per 1000 atoms (including hydrogen atoms). The all-atom clashscore for this structure is 5.

All (20) close contacts within the same asymmetric unit are listed below, sorted by their clash magnitude.

Atom-1	Atom-2	Interatomic distance (Å)	Clash overlap (Å)
1:B:72:TYR:OH	1:B:77:GLN:NE2	2.24	0.69
2:D:570:ARG:HG3	2:D:585:VAL:HG22	1.78	0.66
1:A:42:ARG:HH11	1:A:42:ARG:HG2	1.71	0.56
2:D:583:ILE:HD12	2:D:583:ILE:N	2.23	0.54
1:A:42:ARG:HD3	1:A:43:MET:HE3	1.92	0.50
2:D:575:ASP:O	2:D:579:GLY:N	2.47	0.47
1:B:101:GLN:O	1:B:102:ALA:HB3	2.14	0.47
1:B:24:SER:OG	1:B:27:GLU:HG3	2.15	0.46
1:B:11:THR:OG1	1:B:13:ARG:NH1	2.50	0.45
2:D:576:LYS:N	2:D:576:LYS:HD3	2.31	0.45
1:A:17:ARG:HH12	5:A:203:OXM:C2	2.29	0.45
2:D:570:ARG:NH2	7:D:601:HOH:O	2.50	0.44
1:A:4[B]:THR:CG2	1:A:69:CYS:SG	3.06	0.43
1:B:88:LYS:NZ	7:B:306:HOH:O	2.52	0.42
2:D:576:LYS:N	2:D:576:LYS:CD	2.84	0.41
1:A:26:ASN:O	1:A:30:GLU:HG3	2.21	0.41
2:C:576:LYS:N	2:C:576:LYS:HD3	2.36	0.40
2:C:575:ASP:OD2	2:C:577:SER:OG	2.36	0.40
2:C:585:VAL:HG12	2:C:586:LYS:O	2.22	0.40
1:B:44:ASN:HB3	1:B:47:SER:HB2	2.04	0.40

There are no symmetry-related clashes.

5.3 Torsion angles

5.3.1 Protein backbone

In the following table, the Percentiles column shows the percent Ramachandran outliers of the chain as a percentile score with respect to all X-ray entries followed by that with respect to entries of similar resolution.

The Analysed column shows the number of residues for which the backbone conformation was analysed, and the total number of residues.

Mol	Chain	Analysed	Favoured	Allowed	Outliers	Percentiles	
1	A	110/108 (102%)	110 (100%)	0	0	100	100
1	B	102/108 (94%)	102 (100%)	0	0	100	100
2	C	17/27 (63%)	16 (94%)	1 (6%)	0	100	100
2	D	18/27 (67%)	16 (89%)	2 (11%)	0	100	100
All	All	247/270 (92%)	244 (99%)	3 (1%)	0	100	100

There are no Ramachandran outliers to report.

5.3.2 Protein sidechains

In the following table, the Percentiles column shows the percent sidechain outliers of the chain as a percentile score with respect to all X-ray entries followed by that with respect to entries of similar resolution.

The Analysed column shows the number of residues for which the sidechain conformation was analysed, and the total number of residues.

Mol	Chain	Analysed	Rotameric	Outliers	Percentiles	
1	A	104/99 (105%)	104 (100%)	0	100	100
1	B	97/99 (98%)	97 (100%)	0	100	100
2	C	18/24 (75%)	18 (100%)	0	100	100
2	D	19/24 (79%)	19 (100%)	0	100	100
All	All	238/246 (97%)	238 (100%)	0	100	100

There are no protein residues with a non-rotameric sidechain to report.

Sometimes sidechains can be flipped to improve hydrogen bonding and reduce clashes. All (1) such sidechains are listed below:

Mol	Chain	Res	Type
1	B	77	GLN

5.3.3 RNA [i](#)

There are no RNA molecules in this entry.

5.4 Non-standard residues in protein, DNA, RNA chains [i](#)

There are no non-standard protein/DNA/RNA residues in this entry.

5.5 Carbohydrates [i](#)

There are no oligosaccharides in this entry.

5.6 Ligand geometry [i](#)

7 ligands are modelled in this entry.

In the following table, the Counts columns list the number of bonds (or angles) for which Mogul statistics could be retrieved, the number of bonds (or angles) that are observed in the model and the number of bonds (or angles) that are defined in the Chemical Component Dictionary. The Link column lists molecule types, if any, to which the group is linked. The Z score for a bond length (or angle) is the number of standard deviations the observed value is removed from the expected value. A bond length (or angle) with $|Z| > 2$ is considered an outlier worth inspection. RMSZ is the root-mean-square of all Z scores of the bond lengths (or angles).

Mol	Type	Chain	Res	Link	Bond lengths			Bond angles		
					Counts	RMSZ	$\# Z > 2$	Counts	RMSZ	$\# Z > 2$
5	OXM	A	203	-	5,5,5	1.06	1 (20%)	4,6,6	1.71	2 (50%)
6	MES	B	202	-	12,12,12	1.02	1 (8%)	14,16,16	1.53	1 (7%)
4	PGE	B	201	-	9,9,9	0.29	0	8,8,8	0.53	0
3	1PE	A	201	-	15,15,15	0.29	0	14,14,14	0.44	0
6	MES	B	204	-	12,12,12	1.14	1 (8%)	14,16,16	1.19	2 (14%)
4	PGE	A	202	-	9,9,9	0.29	0	8,8,8	0.56	0
6	MES	B	203	-	12,12,12	1.14	1 (8%)	14,16,16	1.04	1 (7%)

In the following table, the Chirals column lists the number of chiral outliers, the number of chiral centers analysed, the number of these observed in the model and the number defined in the Chemical Component Dictionary. Similar counts are reported in the Torsion and Rings columns. '-' means no outliers of that kind were identified.

Mol	Type	Chain	Res	Link	Chirals	Torsions	Rings
5	OXM	A	203	-	-	3/3/4/4	-
6	MES	B	202	-	-	1/6/14/14	0/1/1/1
4	PGE	B	201	-	-	2/7/7/7	-
3	1PE	A	201	-	-	5/13/13/13	-
6	MES	B	204	-	-	1/6/14/14	0/1/1/1
4	PGE	A	202	-	-	1/7/7/7	-
6	MES	B	203	-	-	5/6/14/14	0/1/1/1

All (4) bond length outliers are listed below:

Mol	Chain	Res	Type	Atoms	Z	Observed(Å)	Ideal(Å)
6	B	203	MES	C8-S	3.18	1.82	1.77
6	B	204	MES	C8-S	3.16	1.82	1.77
6	B	202	MES	C8-S	2.72	1.81	1.77
5	A	203	OXM	O3-C2	-2.08	1.24	1.30

All (6) bond angle outliers are listed below:

Mol	Chain	Res	Type	Atoms	Z	Observed(°)	Ideal(°)
6	B	202	MES	O1S-S-C8	-4.23	101.82	106.92
6	B	203	MES	O1S-S-C8	-3.05	103.24	106.92
5	A	203	OXM	O2-C2-C1	-2.54	116.41	122.06
6	B	204	MES	O1S-S-C8	-2.19	104.28	106.92
5	A	203	OXM	O3-C2-O2	2.13	128.49	123.61
6	B	204	MES	C2-C3-N4	-2.12	106.89	110.10

There are no chirality outliers.

All (18) torsion outliers are listed below:

Mol	Chain	Res	Type	Atoms
5	A	203	OXM	N1-C1-C2-O2
5	A	203	OXM	N1-C1-C2-O3
5	A	203	OXM	O1-C1-C2-O2
3	A	201	1PE	OH5-C14-C24-OH4
3	A	201	1PE	OH7-C16-C26-OH6
4	A	202	PGE	O3-C5-C6-O4
4	B	201	PGE	O1-C1-C2-O2
4	B	201	PGE	O3-C5-C6-O4
6	B	202	MES	N4-C7-C8-S
6	B	203	MES	C8-C7-N4-C3
6	B	203	MES	C8-C7-N4-C5

Continued on next page...

Continued from previous page...

Mol	Chain	Res	Type	Atoms
3	A	201	1PE	C15-C25-OH5-C14
6	B	203	MES	C7-C8-S-O3S
3	A	201	1PE	OH6-C15-C25-OH5
6	B	203	MES	C7-C8-S-O1S
6	B	203	MES	C7-C8-S-O2S
6	B	204	MES	C7-C8-S-O1S
3	A	201	1PE	C13-C23-OH3-C22

There are no ring outliers.

1 monomer is involved in 1 short contact:

Mol	Chain	Res	Type	Clashes	Symm-Clashes
5	A	203	OXM	1	0

5.7 Other polymers [i](#)

There are no such residues in this entry.

5.8 Polymer linkage issues [i](#)

There are no chain breaks in this entry.

6 Fit of model and data ⓘ

6.1 Protein, DNA and RNA chains ⓘ

In the following table, the column labelled ‘#RSRZ> 2’ contains the number (and percentage) of RSRZ outliers, followed by percent RSRZ outliers for the chain as percentile scores relative to all X-ray entries and entries of similar resolution. The OWAB column contains the minimum, median, 95th percentile and maximum values of the occupancy-weighted average B-factor per residue. The column labelled ‘Q< 0.9’ lists the number of (and percentage) of residues with an average occupancy less than 0.9.

Mol	Chain	Analysed	<RSRZ>	#RSRZ>2	OWAB(Å ²)	Q<0.9
1	A	106/108 (98%)	0.06	3 (2%) 55 59	10, 26, 60, 93	5 (4%)
1	B	102/108 (94%)	0.28	5 (4%) 35 38	19, 33, 65, 99	1 (0%)
2	C	19/27 (70%)	1.13	3 (15%) 5 4	29, 51, 82, 94	0
2	D	20/27 (74%)	1.34	4 (20%) 3 2	34, 60, 91, 92	0
All	All	247/270 (91%)	0.34	15 (6%) 27 29	10, 33, 79, 99	6 (2%)

All (15) RSRZ outliers are listed below:

Mol	Chain	Res	Type	RSRZ
1	B	102	ALA	4.9
1	A	102	ALA	4.6
2	C	587	THR	3.5
1	A	-3	GLY	3.3
1	B	94	LEU	3.3
2	D	588	THR	3.0
1	B	73[A]	ARG	2.5
2	D	578	LYS	2.5
1	B	99	ALA	2.5
2	D	570	ARG	2.5
1	B	92	TYR	2.2
2	D	571	THR	2.2
2	C	573	VAL	2.1
2	C	576	LYS	2.1
1	A	-2	PRO	2.0

6.2 Non-standard residues in protein, DNA, RNA chains ⓘ

There are no non-standard protein/DNA/RNA residues in this entry.

6.3 Carbohydrates [i](#)

There are no oligosaccharides in this entry.

6.4 Ligands [i](#)

In the following table, the Atoms column lists the number of modelled atoms in the group and the number defined in the chemical component dictionary. The B-factors column lists the minimum, median, 95th percentile and maximum values of B factors of atoms in the group. The column labelled 'Q< 0.9' lists the number of atoms with occupancy less than 0.9.

Mol	Type	Chain	Res	Atoms	RSCC	RSR	B-factors(\AA^2)	Q<0.9
3	1PE	A	201	16/16	0.84	0.15	29,47,62,67	0
4	PGE	B	201	10/10	0.84	0.12	30,38,53,64	0
5	OXM	A	203	6/6	0.84	0.11	39,50,62,62	0
6	MES	B	202	12/12	0.88	0.13	33,45,53,59	0
6	MES	B	204	12/12	0.88	0.15	42,73,88,92	0
4	PGE	A	202	10/10	0.89	0.12	38,46,56,62	0
6	MES	B	203	12/12	0.90	0.12	27,41,60,73	0

6.5 Other polymers [i](#)

There are no such residues in this entry.