



Full wwPDB EM Validation Report ⓘ

Sep 4, 2024 – 04:50 pm BST

PDB ID : 8RMP
EMDB ID : EMD-19366
Title : Influenza polymerase A/H7N9-4M (ENDO(R) | Core1)
Authors : Arragain, B.; Cusack, S.
Deposited on : 2024-01-08
Resolution : 2.77 Å (reported)

This is a Full wwPDB EM Validation Report for a publicly released PDB entry.

We welcome your comments at validation@mail.wwpdb.org

A user guide is available at

<https://www.wwpdb.org/validation/2017/EMValidationReportHelp>

with specific help available everywhere you see the ⓘ symbol.

The types of validation reports are described at

<http://www.wwpdb.org/validation/2017/FAQs#types>.

The following versions of software and data (see [references ⓘ](#)) were used in the production of this report:

EMDB validation analysis : 0.0.1.dev112
MolProbity : 4.02b-467
Percentile statistics : 20231227.v01 (using entries in the PDB archive December 27th 2023)
MapQ : 1.9.13
Ideal geometry (proteins) : Engh & Huber (2001)
Ideal geometry (DNA, RNA) : Parkinson et al. (1996)
Validation Pipeline (wwPDB-VP) : 2.38.2

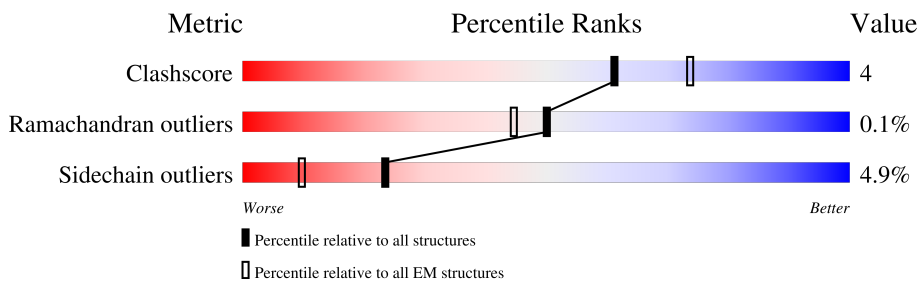
1 Overall quality at a glance

The following experimental techniques were used to determine the structure:

ELECTRON MICROSCOPY

The reported resolution of this entry is 2.77 Å.

Percentile scores (ranging between 0-100) for global validation metrics of the entry are shown in the following graphic. The table shows the number of entries on which the scores are based.



Metric	Whole archive (#Entries)	EM structures (#Entries)
Clashscore	210492	15764
Ramachandran outliers	207382	16835
Sidechain outliers	206894	16415

The table below summarises the geometric issues observed across the polymeric chains and their fit to the map. The red, orange, yellow and green segments of the bar indicate the fraction of residues that contain outliers for ≥ 3 , 2, 1 and 0 types of geometric quality criteria respectively. A grey segment represents the fraction of residues that are not modelled. The numeric value for each fraction is indicated below the corresponding segment, with a dot representing fractions $\leq 5\%$. The upper red bar (where present) indicates the fraction of residues that have poor fit to the EM map (all-atom inclusion $< 40\%$). The numeric value is given above the bar.

Mol	Chain	Length	Quality of chain
1	A	716	 17% (red), 83% (green), 16% (yellow), .. (grey)
2	B	757	 10% (red), 79% (green), 15% (yellow), 6% (grey)
3	C	788	 33% (green), 5% (yellow), 62% (grey)

2 Entry composition [i](#)

There are 4 unique types of molecules in this entry. The entry contains 27631 atoms, of which 13813 are hydrogens and 0 are deuteriums.

In the tables below, the AltConf column contains the number of residues with at least one atom in alternate conformation and the Trace column contains the number of residues modelled with at most 2 atoms.

- Molecule 1 is a protein called Polymerase acidic protein.

Mol	Chain	Residues	Atoms						AltConf	Trace
			Total	C	H	N	O	S		
1	A	707	11418	3635	5678	975	1089	41	0	0

There are 2 discrepancies between the modelled and reference sequences:

Chain	Residue	Modelled	Actual	Comment	Reference
A	349	LYS	GLU	engineered mutation	UNP M9TI86
A	490	ILE	ARG	engineered mutation	UNP M9TI86

- Molecule 2 is a protein called RNA-directed RNA polymerase catalytic subunit.

Mol	Chain	Residues	Atoms						AltConf	Trace
			Total	C	H	N	O	S		
2	B	710	11294	3566	5631	983	1069	45	0	0

There is a discrepancy between the modelled and reference sequences:

Chain	Residue	Modelled	Actual	Comment	Reference
B	577	GLY	LYS	engineered mutation	UNP S5ME50

- Molecule 3 is a protein called Polymerase basic protein 2.

Mol	Chain	Residues	Atoms						AltConf	Trace
			Total	C	H	N	O	S		
3	C	300	4918	1524	2504	439	434	17	0	0

There are 30 discrepancies between the modelled and reference sequences:

Chain	Residue	Modelled	Actual	Comment	Reference
C	74	ARG	GLY	engineered mutation	UNP X5F427
C	760	GLY	-	expression tag	UNP X5F427
C	761	TRP	-	expression tag	UNP X5F427

Continued on next page...

Continued from previous page...

Chain	Residue	Modelled	Actual	Comment	Reference
C	762	SER	-	expression tag	UNP X5F427
C	763	HIS	-	expression tag	UNP X5F427
C	764	PRO	-	expression tag	UNP X5F427
C	765	GLN	-	expression tag	UNP X5F427
C	766	PHE	-	expression tag	UNP X5F427
C	767	GLU	-	expression tag	UNP X5F427
C	768	LYS	-	expression tag	UNP X5F427
C	769	GLY	-	expression tag	UNP X5F427
C	770	GLY	-	expression tag	UNP X5F427
C	771	GLY	-	expression tag	UNP X5F427
C	772	SER	-	expression tag	UNP X5F427
C	773	GLY	-	expression tag	UNP X5F427
C	774	GLY	-	expression tag	UNP X5F427
C	775	GLY	-	expression tag	UNP X5F427
C	776	SER	-	expression tag	UNP X5F427
C	777	GLY	-	expression tag	UNP X5F427
C	778	GLY	-	expression tag	UNP X5F427
C	779	SER	-	expression tag	UNP X5F427
C	780	ALA	-	expression tag	UNP X5F427
C	781	TRP	-	expression tag	UNP X5F427
C	782	SER	-	expression tag	UNP X5F427
C	783	HIS	-	expression tag	UNP X5F427
C	784	PRO	-	expression tag	UNP X5F427
C	785	GLN	-	expression tag	UNP X5F427
C	786	PHE	-	expression tag	UNP X5F427
C	787	GLU	-	expression tag	UNP X5F427
C	788	LYS	-	expression tag	UNP X5F427

- Molecule 4 is MAGNESIUM ION (three-letter code: MG) (formula: Mg) (labeled as "Ligand of Interest" by depositor).

Mol	Chain	Residues	Atoms	AltConf
4	B	1	Total Mg 1 1	0

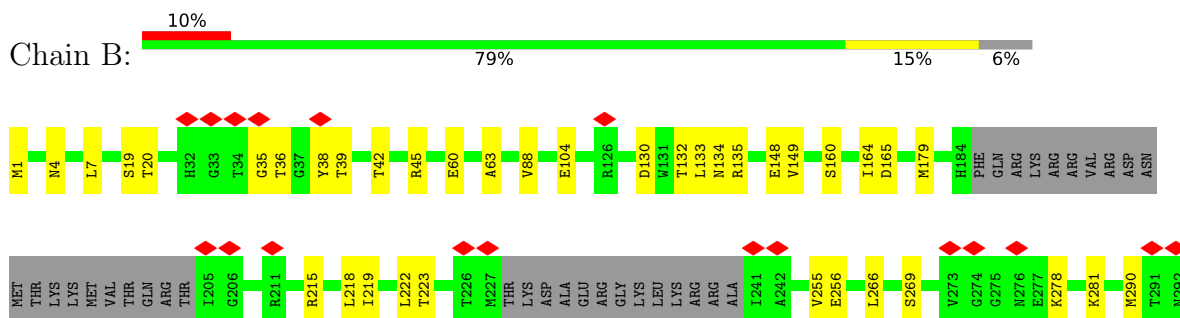
3 Residue-property plots [i](#)

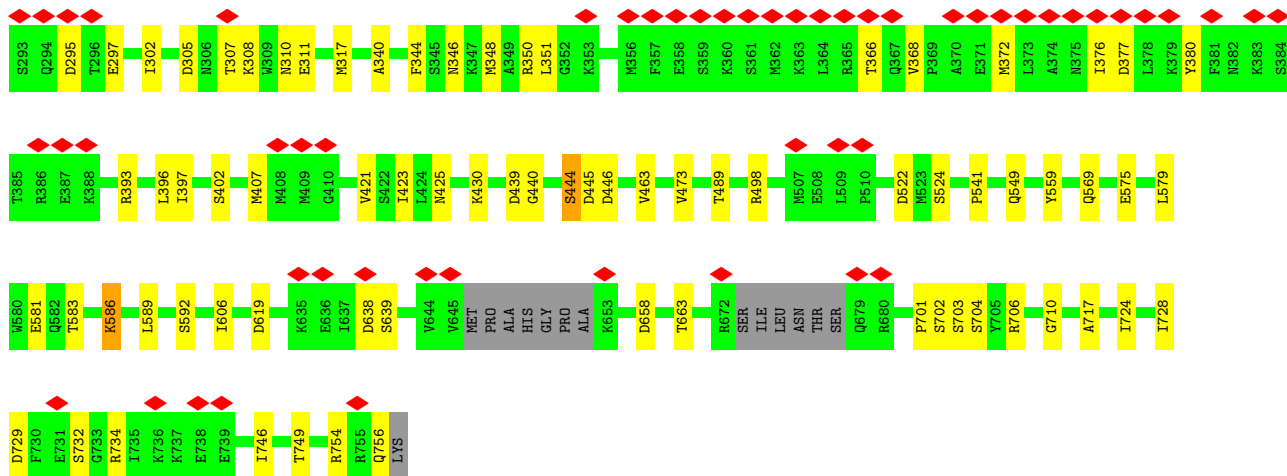
These plots are drawn for all protein, RNA, DNA and oligosaccharide chains in the entry. The first graphic for a chain summarises the proportions of the various outlier classes displayed in the second graphic. The second graphic shows the sequence view annotated by issues in geometry and atom inclusion in map density. Residues are color-coded according to the number of geometric quality criteria for which they contain at least one outlier: green = 0, yellow = 1, orange = 2 and red = 3 or more. A red diamond above a residue indicates a poor fit to the EM map for this residue (all-atom inclusion < 40%). Stretches of 2 or more consecutive residues without any outlier are shown as a green connector. Residues present in the sample, but not in the model, are shown in grey.

- Molecule 1: Polymerase acidic protein

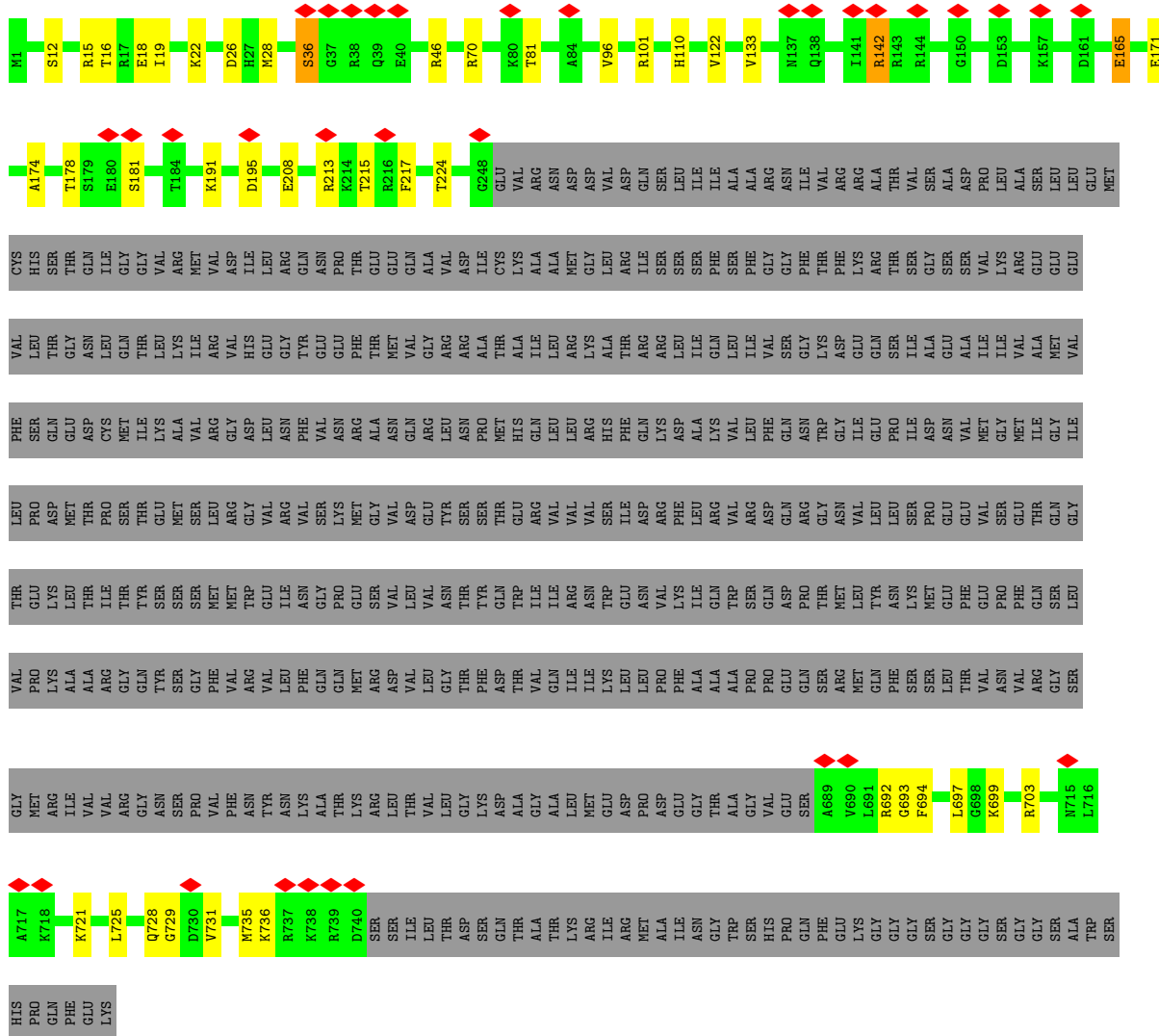


- Molecule 2: RNA-directed RNA polymerase catalytic subunit





• Molecule 3: Polymerase basic protein 2



4 Experimental information

Property	Value	Source
EM reconstruction method	SINGLE PARTICLE	Depositor
Imposed symmetry	POINT, C1	Depositor
Number of particles used	56572	Depositor
Resolution determination method	FSC 0.143 CUT-OFF	Depositor
CTF correction method	PHASE FLIPPING AND AMPLITUDE CORRECTION	Depositor
Microscope	TFS KRIOS	Depositor
Voltage (kV)	300	Depositor
Electron dose ($e^-/\text{\AA}^2$)	40	Depositor
Minimum defocus (nm)	800	Depositor
Maximum defocus (nm)	2000	Depositor
Magnification	Not provided	
Image detector	GATAN K3 BIOQUANTUM (6k x 4k)	Depositor
Maximum map value	3.208	Depositor
Minimum map value	-2.103	Depositor
Average map value	0.001	Depositor
Map value standard deviation	0.074	Depositor
Recommended contour level	0.5	Depositor
Map size (Å)	352.8, 352.8, 352.8	wwPDB
Map dimensions	420, 420, 420	wwPDB
Map angles (°)	90.0, 90.0, 90.0	wwPDB
Pixel spacing (Å)	0.84, 0.84, 0.84	Depositor

5 Model quality [i](#)

5.1 Standard geometry [i](#)

Bond lengths and bond angles in the following residue types are not validated in this section: MG

The Z score for a bond length (or angle) is the number of standard deviations the observed value is removed from the expected value. A bond length (or angle) with $|Z| > 5$ is considered an outlier worth inspection. RMSZ is the root-mean-square of all Z scores of the bond lengths (or angles).

Mol	Chain	Bond lengths		Bond angles	
		RMSZ	# Z >5	RMSZ	# Z >5
1	A	0.26	0/5862	0.48	0/7900
2	B	0.27	0/5772	0.50	0/7783
3	C	0.25	0/2456	0.51	0/3304
All	All	0.26	0/14090	0.49	0/18987

There are no bond length outliers.

There are no bond angle outliers.

There are no chirality outliers.

There are no planarity outliers.

5.2 Too-close contacts [i](#)

In the following table, the Non-H and H(model) columns list the number of non-hydrogen atoms and hydrogen atoms in the chain respectively. The H(added) column lists the number of hydrogen atoms added and optimized by MolProbity. The Clashes column lists the number of clashes within the asymmetric unit, whereas Symm-Clashes lists symmetry-related clashes.

Mol	Chain	Non-H	H(model)	H(added)	Clashes	Symm-Clashes
1	A	5740	5678	5678	51	0
2	B	5663	5631	5631	57	0
3	C	2414	2504	2504	26	0
4	B	1	0	0	0	0
All	All	13818	13813	13813	116	0

The all-atom clashscore is defined as the number of clashes found per 1000 atoms (including hydrogen atoms). The all-atom clashscore for this structure is 4.

All (116) close contacts within the same asymmetric unit are listed below, sorted by their clash magnitude.

Atom-1	Atom-2	Interatomic distance (Å)	Clash overlap (Å)
2:B:522:ASP:OD2	2:B:559:TYR:OH	1.94	0.85
1:A:300:GLU:O	2:B:569:GLN:NE2	2.12	0.83
1:A:181:GLU:N	1:A:181:GLU:OE2	2.18	0.76
1:A:50:ASP:OD1	1:A:51:PHE:N	2.19	0.75
2:B:45:ARG:NH1	2:B:311:GLU:OE2	2.22	0.72
1:A:342:LEU:O	1:A:346:GLN:NE2	2.25	0.69
1:A:43:GLU:OE2	1:A:174:ARG:NE	2.25	0.69
2:B:376:ILE:O	2:B:393:ARG:NH2	2.26	0.69
1:A:506:LYS:NZ	1:A:509:SER:OG	2.22	0.65
2:B:219:ILE:O	2:B:223:THR:HG23	1.97	0.64
3:C:174:ALA:O	3:C:178:THR:OG1	2.11	0.63
2:B:729:ASP:OD1	2:B:734:ARG:NH2	2.32	0.63
2:B:729:ASP:OD1	2:B:734:ARG:CZ	2.47	0.63
1:A:173:THR:HG23	3:C:178:THR:HG21	1.80	0.62
1:A:493:GLU:OE1	1:A:493:GLU:N	2.32	0.62
2:B:269:SER:O	2:B:281:LYS:NZ	2.28	0.62
1:A:324:LYS:NZ	1:A:537:TRP:O	2.23	0.62
2:B:579:LEU:O	2:B:583:THR:HG23	2.00	0.62
1:A:55:ASP:OD1	1:A:59:GLU:N	2.33	0.62
2:B:104:GLU:N	2:B:104:GLU:OE1	2.33	0.62
2:B:575:GLU:OE1	3:C:101:ARG:NE	2.30	0.61
2:B:160:SER:OG	2:B:165:ASP:OD2	2.16	0.61
2:B:439:ASP:OD1	2:B:440:GLY:N	2.34	0.60
1:A:426:ASP:O	2:B:549:GLN:NE2	2.36	0.59
3:C:692:ARG:O	3:C:736:LYS:NZ	2.35	0.59
1:A:203:GLU:OE1	2:B:164:ILE:HD13	2.03	0.59
1:A:643:LYS:NZ	2:B:20:THR:O	2.36	0.59
3:C:110:HIS:NE2	3:C:195:ASP:O	2.36	0.58
1:A:94:ILE:O	1:A:98:THR:OG1	2.22	0.57
2:B:148:GLU:OE1	3:C:15:ARG:NH2	2.37	0.57
2:B:638:ASP:OD1	2:B:639:SER:N	2.38	0.56
2:B:701:PRO:O	2:B:704:SER:OG	2.23	0.56
3:C:165:GLU:OE2	3:C:692:ARG:NH1	2.40	0.55
1:A:283:LEU:O	1:A:461:LYS:NZ	2.39	0.55
2:B:423:ILE:HD11	2:B:473:VAL:HG21	1.89	0.55
1:A:600:SER:O	1:A:604:GLU:N	2.40	0.54
1:A:2:GLU:OE2	1:A:6:ARG:NH2	2.41	0.54
2:B:310:ASN:O	2:B:407:MET:N	2.38	0.54
1:A:41:HIS:NE2	1:A:108:ASP:OD2	2.39	0.54
2:B:524:SER:OG	2:B:658:ASP:O	2.18	0.53
2:B:63:ALA:HA	2:B:397:ILE:HD11	1.91	0.53
1:A:450:VAL:HG13	1:A:641:LEU:HD22	1.91	0.53

Continued on next page...

Continued from previous page...

Atom-1	Atom-2	Interatomic distance (Å)	Clash overlap (Å)
2:B:302:ILE:HD11	2:B:463:VAL:HG22	1.91	0.53
2:B:310:ASN:OD1	2:B:310:ASN:N	2.41	0.52
2:B:266:LEU:HD13	2:B:421:VAL:HG11	1.92	0.52
2:B:583:THR:HG21	2:B:589:LEU:HD21	1.92	0.52
1:A:45:CYS:SG	1:A:120:ILE:HD11	2.49	0.51
1:A:309:LYS:O	1:A:313:THR:HG23	2.10	0.51
1:A:576:LYS:NZ	1:A:580:GLU:OE2	2.41	0.51
3:C:18:GLU:O	3:C:22:LYS:HG2	2.09	0.51
1:A:506:LYS:NZ	1:A:507:GLY:O	2.42	0.51
2:B:706:ARG:NH2	3:C:728:GLN:OE1	2.44	0.51
1:A:177:THR:O	1:A:181:GLU:OE2	2.29	0.50
2:B:717:ALA:HB1	3:C:729:GLY:HA3	1.92	0.50
1:A:166:GLU:O	1:A:170:ARG:HG3	2.11	0.50
1:A:345:LEU:HD23	1:A:348:ILE:HD11	1.93	0.50
3:C:178:THR:HG22	3:C:694:PHE:O	2.11	0.50
3:C:213:ARG:NH2	3:C:215:THR:OG1	2.44	0.50
2:B:583:THR:O	2:B:586:LYS:NZ	2.45	0.49
2:B:38:TYR:O	2:B:42:THR:HG23	2.13	0.49
2:B:222:LEU:O	2:B:348:MET:N	2.45	0.49
2:B:710:GLY:N	3:C:26:ASP:OD1	2.38	0.49
1:A:439:ALA:HB2	2:B:541:PRO:HB2	1.96	0.48
3:C:725:LEU:HD12	3:C:731:VAL:HG22	1.95	0.48
1:A:52:HIS:NE2	1:A:163:LEU:HD22	2.29	0.47
2:B:4:ASN:ND2	2:B:7:LEU:HD13	2.29	0.47
2:B:307:THR:HG23	2:B:308:LYS:N	2.30	0.47
3:C:725:LEU:HD11	3:C:729:GLY:HA2	1.97	0.47
2:B:489:THR:HG22	2:B:498:ARG:HA	1.96	0.47
2:B:444:SER:OG	2:B:445:ASP:N	2.48	0.46
2:B:724:ILE:O	2:B:728:ILE:HG12	2.14	0.46
2:B:130:ASP:O	2:B:134:ASN:N	2.48	0.46
3:C:224:THR:HG22	3:C:224:THR:O	2.16	0.46
1:A:491:THR:HG22	1:A:492:LYS:H	1.81	0.45
1:A:19:LYS:NZ	1:A:83:ASP:OD1	2.46	0.45
2:B:35:GLY:O	2:B:39:THR:HG23	2.16	0.45
2:B:702:SER:OG	3:C:171:GLU:OE1	2.28	0.45
2:B:132:THR:CG2	2:B:149:VAL:HG21	2.47	0.45
1:A:302:ILE:HB	1:A:305:TYR:CD1	2.52	0.44
2:B:746:ILE:O	2:B:749:THR:HG22	2.18	0.44
2:B:377:ASP:OD1	2:B:377:ASP:N	2.45	0.44
1:A:76:PHE:CE2	1:A:163:LEU:HD21	2.52	0.44
1:A:124:ARG:NH1	1:A:191:PHE:O	2.51	0.44

Continued on next page...

Continued from previous page...

Atom-1	Atom-2	Interatomic distance (Å)	Clash overlap (Å)
3:C:16:THR:HA	3:C:19:ILE:HG22	2.00	0.44
1:A:12:MET:O	1:A:16:LEU:HG	2.17	0.44
3:C:693:GLY:O	3:C:736:LYS:NZ	2.49	0.44
2:B:663:THR:HG22	3:C:96:VAL:HG13	1.99	0.43
1:A:418:THR:HG22	1:A:419:ASP:N	2.33	0.43
2:B:36:THR:HG23	2:B:351:LEU:O	2.19	0.43
3:C:36:SER:OG	3:C:36:SER:O	2.34	0.43
3:C:697:LEU:HD11	3:C:735:MET:HB2	2.00	0.42
1:A:116:ARG:HH21	1:A:162:THR:HG22	1.84	0.42
1:A:381:PHE:N	2:B:366:THR:OG1	2.52	0.42
2:B:255:VAL:HG21	2:B:340:ALA:HB3	2.01	0.42
1:A:518:VAL:HG12	1:A:570:THR:O	2.20	0.42
2:B:256:GLU:HA	2:B:256:GLU:OE2	2.20	0.42
1:A:291:SER:OG	1:A:499:ASN:OD1	2.37	0.42
2:B:473:VAL:O	2:B:473:VAL:CG1	2.67	0.42
2:B:606:ILE:HG21	3:C:122:VAL:HG22	2.00	0.42
2:B:60:GLU:O	2:B:215:ARG:NE	2.53	0.42
1:A:215:ALA:HB1	1:A:226:LEU:HD22	2.02	0.42
1:A:266:ARG:O	1:A:687:TYR:OH	2.32	0.41
1:A:281:LYS:NZ	1:A:569:GLY:O	2.53	0.41
1:A:123:THR:HG22	1:A:148:PHE:O	2.21	0.41
2:B:88:VAL:HG21	2:B:317:MET:CE	2.50	0.41
1:A:434:PRO:HB2	3:C:133:VAL:HG23	2.03	0.41
1:A:489:CYS:SG	1:A:490:ILE:N	2.92	0.41
1:A:264:THR:N	1:A:265:PRO:HD2	2.35	0.41
1:A:302:ILE:HD11	2:B:569:GLN:OE1	2.21	0.41
1:A:575:MET:O	1:A:579:MET:HG3	2.21	0.41
2:B:619:ASP:OD1	2:B:619:ASP:N	2.48	0.40
3:C:142:ARG:HB3	3:C:217:PHE:CZ	2.56	0.40
1:A:202:GLU:OE1	1:A:203:GLU:N	2.49	0.40
1:A:423:VAL:HG22	1:A:425:LEU:HG	2.03	0.40
2:B:396:LEU:HD12	2:B:396:LEU:C	2.42	0.40
1:A:153:GLU:OE1	3:C:699:LYS:HD2	2.21	0.40

There are no symmetry-related clashes.

5.3 Torsion angles [i](#)

5.3.1 Protein backbone [i](#)

In the following table, the Percentiles column shows the percent Ramachandran outliers of the chain as a percentile score with respect to all PDB entries followed by that with respect to all EM entries.

The Analysed column shows the number of residues for which the backbone conformation was analysed, and the total number of residues.

Mol	Chain	Analysed	Favoured	Allowed	Outliers	Percentiles	
1	A	703/716 (98%)	687 (98%)	16 (2%)	0	100	100
2	B	700/757 (92%)	675 (96%)	24 (3%)	1 (0%)	48	76
3	C	296/788 (38%)	286 (97%)	10 (3%)	0	100	100
All	All	1699/2261 (75%)	1648 (97%)	50 (3%)	1 (0%)	50	76

All (1) Ramachandran outliers are listed below:

Mol	Chain	Res	Type
2	B	444	SER

5.3.2 Protein sidechains [i](#)

In the following table, the Percentiles column shows the percent sidechain outliers of the chain as a percentile score with respect to all PDB entries followed by that with respect to all EM entries.

The Analysed column shows the number of residues for which the sidechain conformation was analysed, and the total number of residues.

Mol	Chain	Analysed	Rotameric	Outliers	Percentiles	
1	A	637/645 (99%)	603 (95%)	34 (5%)	19	46
2	B	626/667 (94%)	598 (96%)	28 (4%)	23	52
3	C	265/686 (39%)	252 (95%)	13 (5%)	21	49
All	All	1528/1998 (76%)	1453 (95%)	75 (5%)	23	49

All (75) residues with a non-rotameric sidechain are listed below:

Mol	Chain	Res	Type
1	A	3	ASP
1	A	26	GLU

Continued on next page...

Continued from previous page...

Mol	Chain	Res	Type
1	A	30	ILE
1	A	48	TYR
1	A	75	ARG
1	A	85	THR
1	A	93	SER
1	A	95	CYS
1	A	123	THR
1	A	124	ARG
1	A	134	LYS
1	A	184	SER
1	A	225	SER
1	A	261	LEU
1	A	262	ARG
1	A	272	ASP
1	A	285	MET
1	A	286	ASP
1	A	294	ASP
1	A	347	ASP
1	A	374	MET
1	A	385	LYS
1	A	405	CYS
1	A	421	SER
1	A	451	SER
1	A	479	ASP
1	A	499	ASN
1	A	509	SER
1	A	513	ASN
1	A	543	LEU
1	A	547	ASP
1	A	611	PHE
1	A	616	SER
1	A	680	THR
2	B	1	MET
2	B	19	SER
2	B	133	LEU
2	B	135	ARG
2	B	179	MET
2	B	218	LEU
2	B	278	LYS
2	B	290	MET
2	B	295	ASP
2	B	297	GLU

Continued on next page...

Continued from previous page...

Mol	Chain	Res	Type
2	B	305	ASP
2	B	344	PHE
2	B	346	ASN
2	B	350	ARG
2	B	368	VAL
2	B	372	MET
2	B	380	TYR
2	B	402	SER
2	B	425	ASN
2	B	430	LYS
2	B	446	ASP
2	B	581	GLU
2	B	586	LYS
2	B	592	SER
2	B	703	SER
2	B	732	SER
2	B	754	ARG
2	B	756	GLN
3	C	12	SER
3	C	28	MET
3	C	36	SER
3	C	46	ARG
3	C	70	ARG
3	C	81	THR
3	C	142	ARG
3	C	165	GLU
3	C	181	SER
3	C	191	LYS
3	C	208	GLU
3	C	703	ARG
3	C	721	LYS

Sometimes sidechains can be flipped to improve hydrogen bonding and reduce clashes. There are no such sidechains identified.

5.3.3 RNA [i](#)

There are no RNA molecules in this entry.

5.4 Non-standard residues in protein, DNA, RNA chains [i](#)

There are no non-standard protein/DNA/RNA residues in this entry.

5.5 Carbohydrates [i](#)

There are no oligosaccharides in this entry.

5.6 Ligand geometry [i](#)

Of 1 ligands modelled in this entry, 1 is monoatomic - leaving 0 for Mogul analysis.

There are no bond length outliers.

There are no bond angle outliers.

There are no chirality outliers.

There are no torsion outliers.

There are no ring outliers.

No monomer is involved in short contacts.

5.7 Other polymers [i](#)

There are no such residues in this entry.

5.8 Polymer linkage issues [i](#)

There are no chain breaks in this entry.

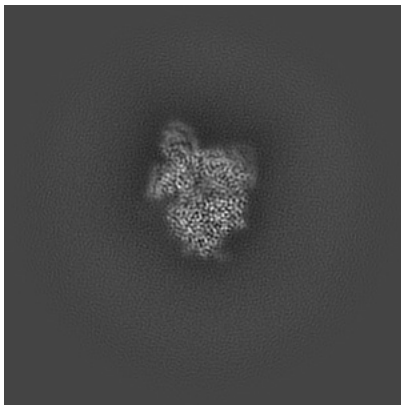
6 Map visualisation [i](#)

This section contains visualisations of the EMDB entry EMD-19366. These allow visual inspection of the internal detail of the map and identification of artifacts.

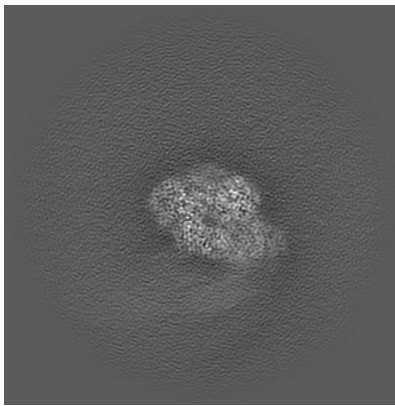
Images derived from a raw map, generated by summing the deposited half-maps, are presented below the corresponding image components of the primary map to allow further visual inspection and comparison with those of the primary map.

6.1 Orthogonal projections [i](#)

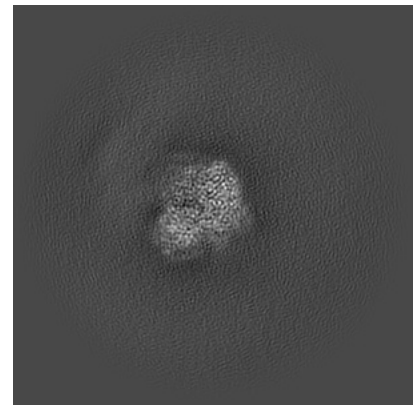
6.1.1 Primary map



X

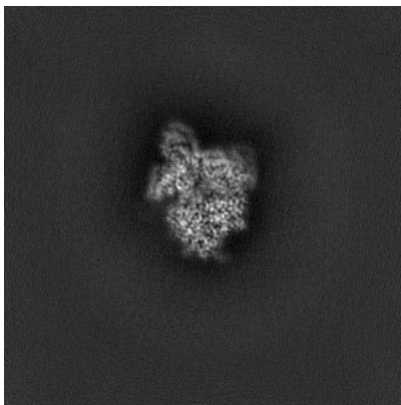


Y

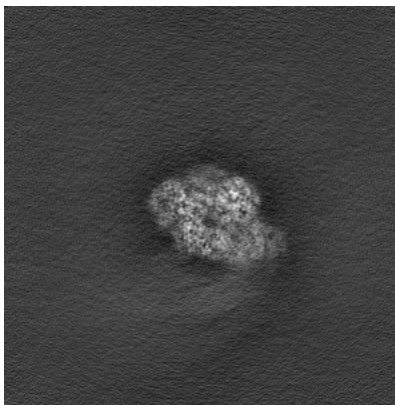


Z

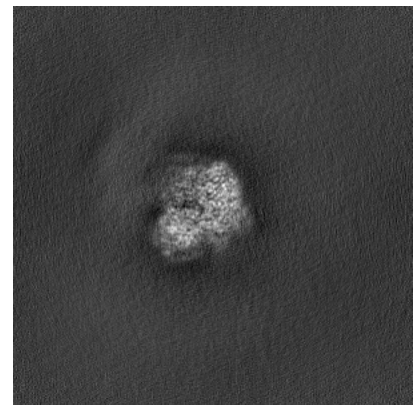
6.1.2 Raw map



X



Y

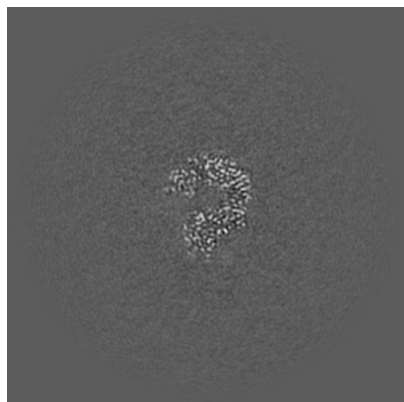


Z

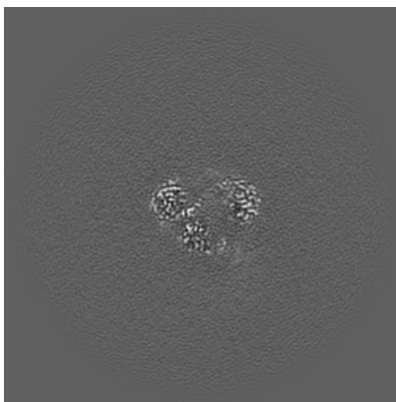
The images above show the map projected in three orthogonal directions.

6.2 Central slices [i](#)

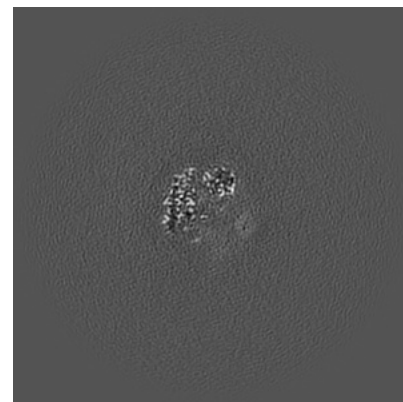
6.2.1 Primary map



X Index: 210

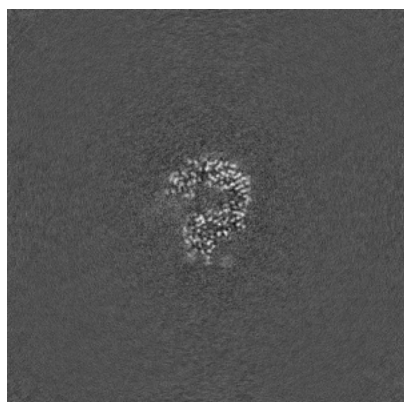


Y Index: 210

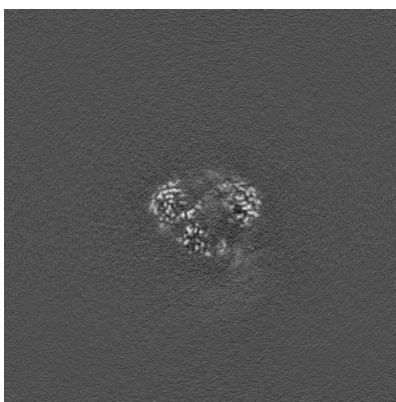


Z Index: 210

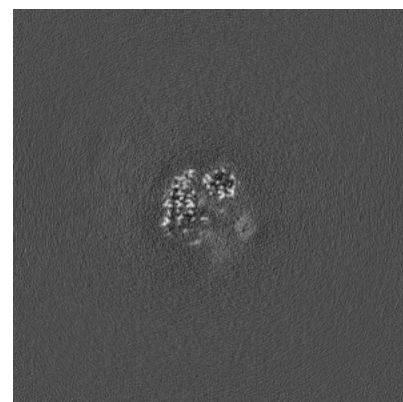
6.2.2 Raw map



X Index: 210



Y Index: 210

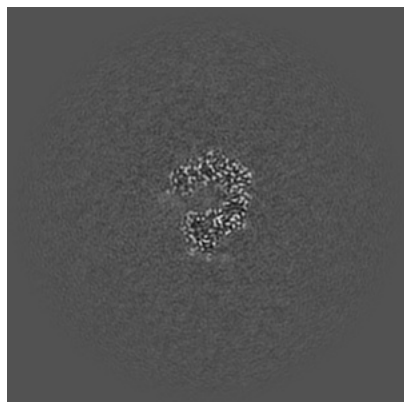


Z Index: 210

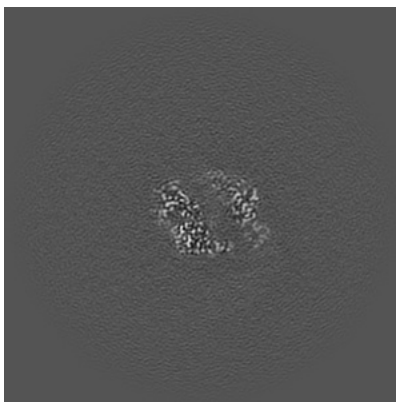
The images above show central slices of the map in three orthogonal directions.

6.3 Largest variance slices [i](#)

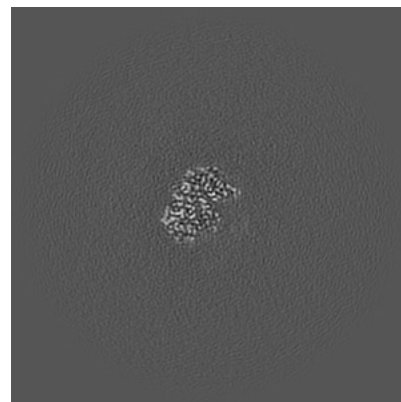
6.3.1 Primary map



X Index: 212

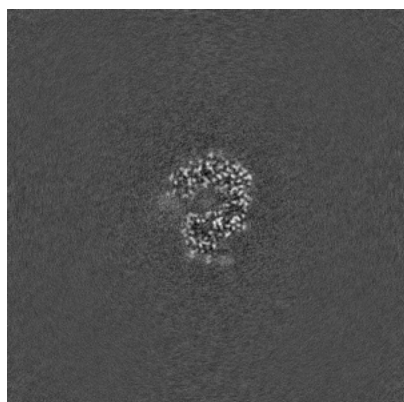


Y Index: 203

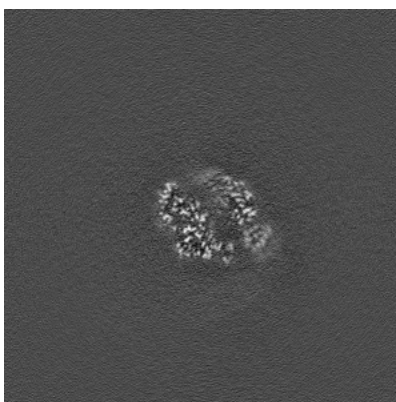


Z Index: 194

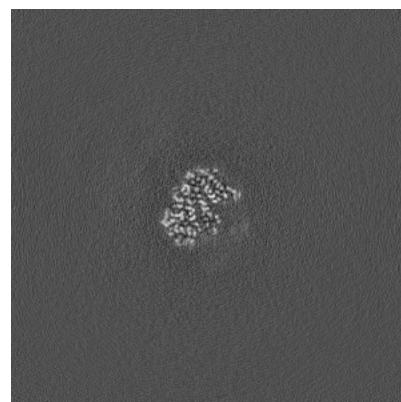
6.3.2 Raw map



X Index: 212



Y Index: 199

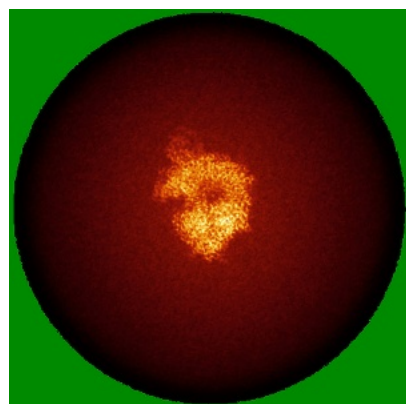


Z Index: 194

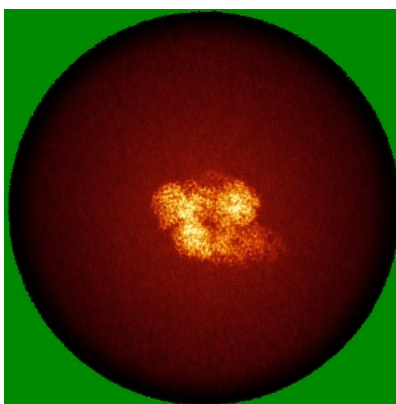
The images above show the largest variance slices of the map in three orthogonal directions.

6.4 Orthogonal standard-deviation projections (False-color) [i](#)

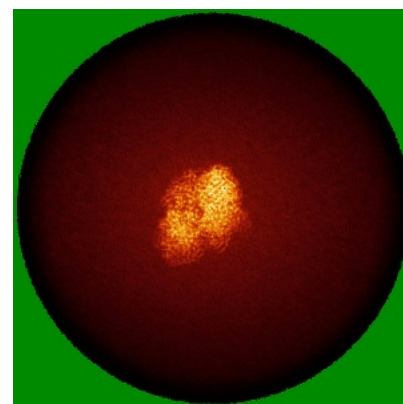
6.4.1 Primary map



X

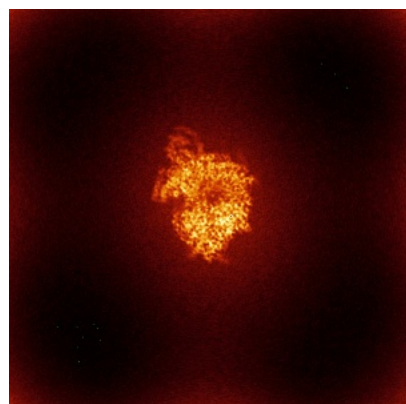


Y

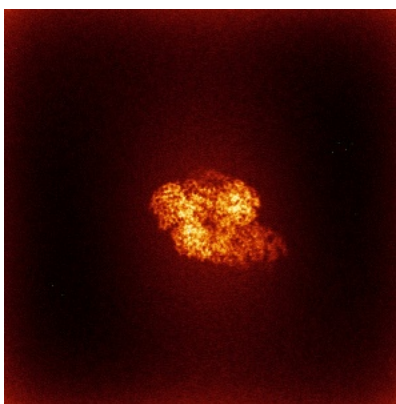


Z

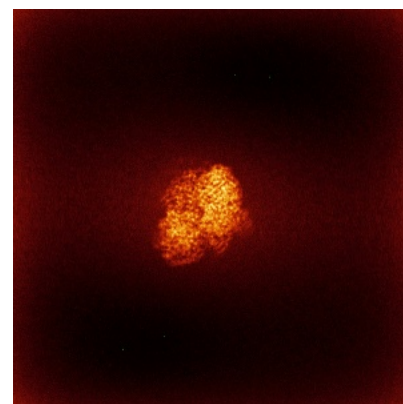
6.4.2 Raw map



X



Y

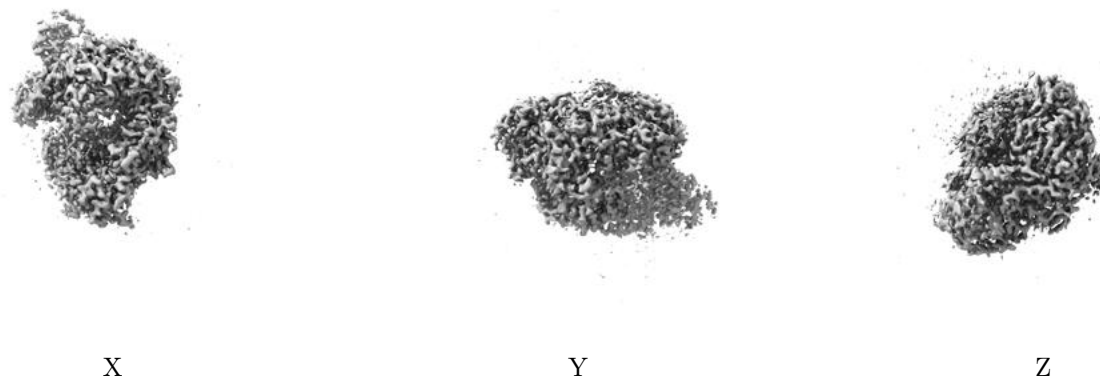


Z

The images above show the map standard deviation projections with false color in three orthogonal directions. Minimum values are shown in green, max in blue, and dark to light orange shades represent small to large values respectively.

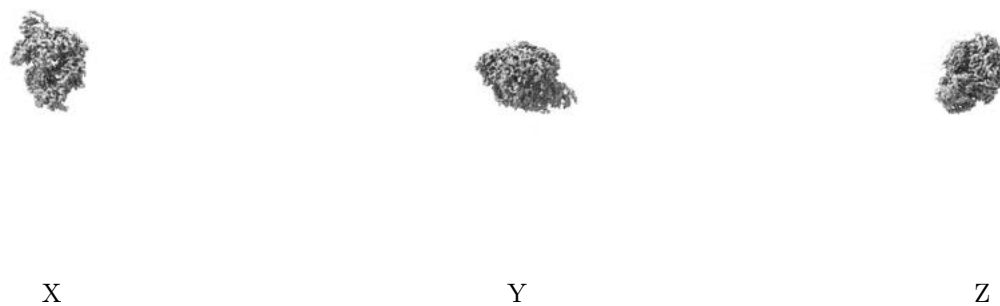
6.5 Orthogonal surface views [i](#)

6.5.1 Primary map



The images above show the 3D surface view of the map at the recommended contour level 0.5. These images, in conjunction with the slice images, may facilitate assessment of whether an appropriate contour level has been provided.

6.5.2 Raw map



These images show the 3D surface of the raw map. The raw map's contour level was selected so that its surface encloses the same volume as the primary map does at its recommended contour level.

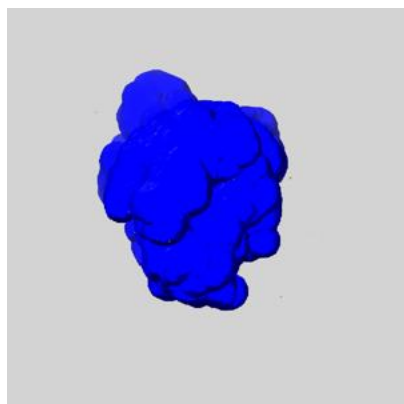
6.6 Mask visualisation [i](#)

This section shows the 3D surface view of the primary map at 50% transparency overlaid with the specified mask at 0% transparency

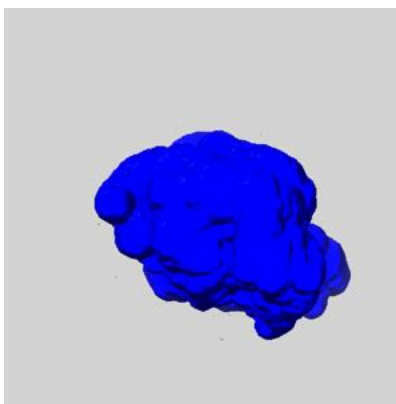
A mask typically either:

- Encompasses the whole structure
- Separates out a domain, a functional unit, a monomer or an area of interest from a larger structure

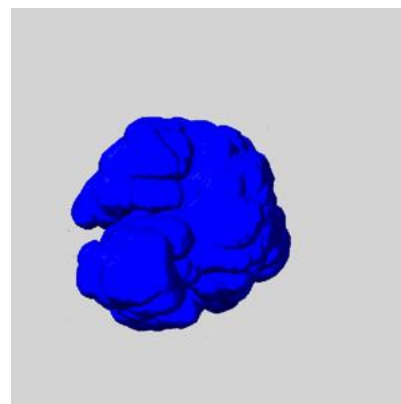
6.6.1 emd_19366_msk_1.map [i](#)



X



Y

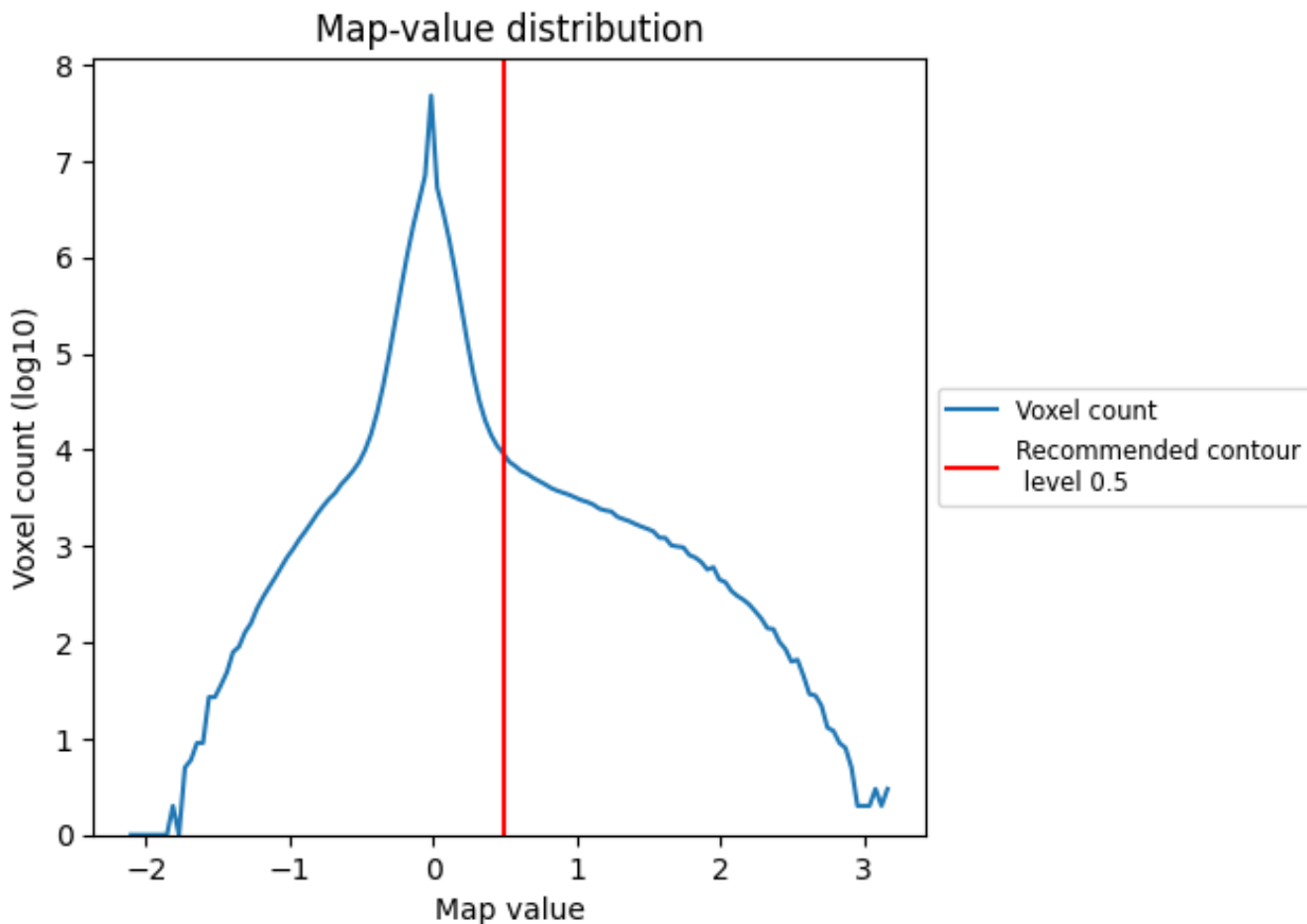


Z

7 Map analysis [i](#)

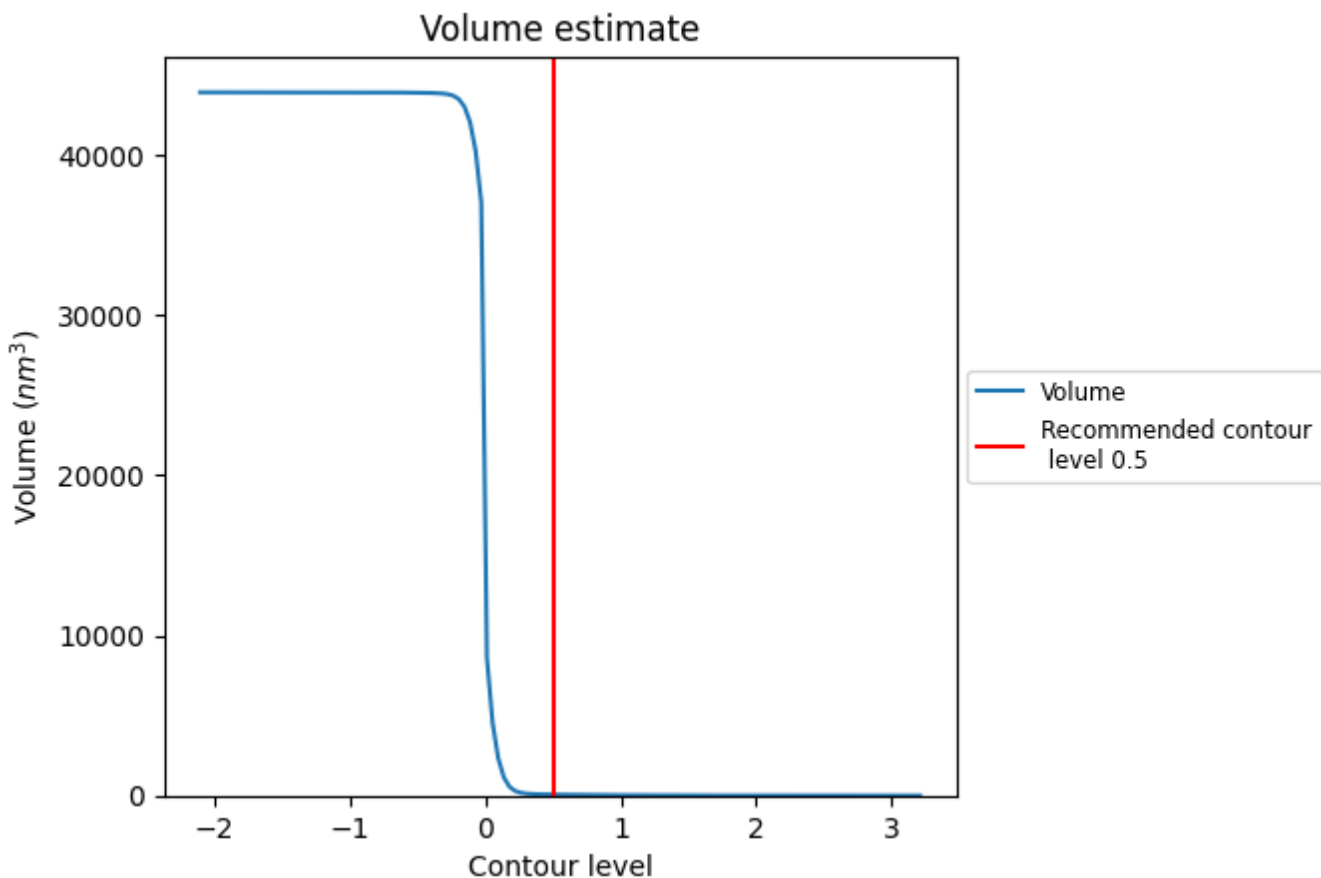
This section contains the results of statistical analysis of the map.

7.1 Map-value distribution [i](#)



The map-value distribution is plotted in 128 intervals along the x-axis. The y-axis is logarithmic. A spike in this graph at zero usually indicates that the volume has been masked.

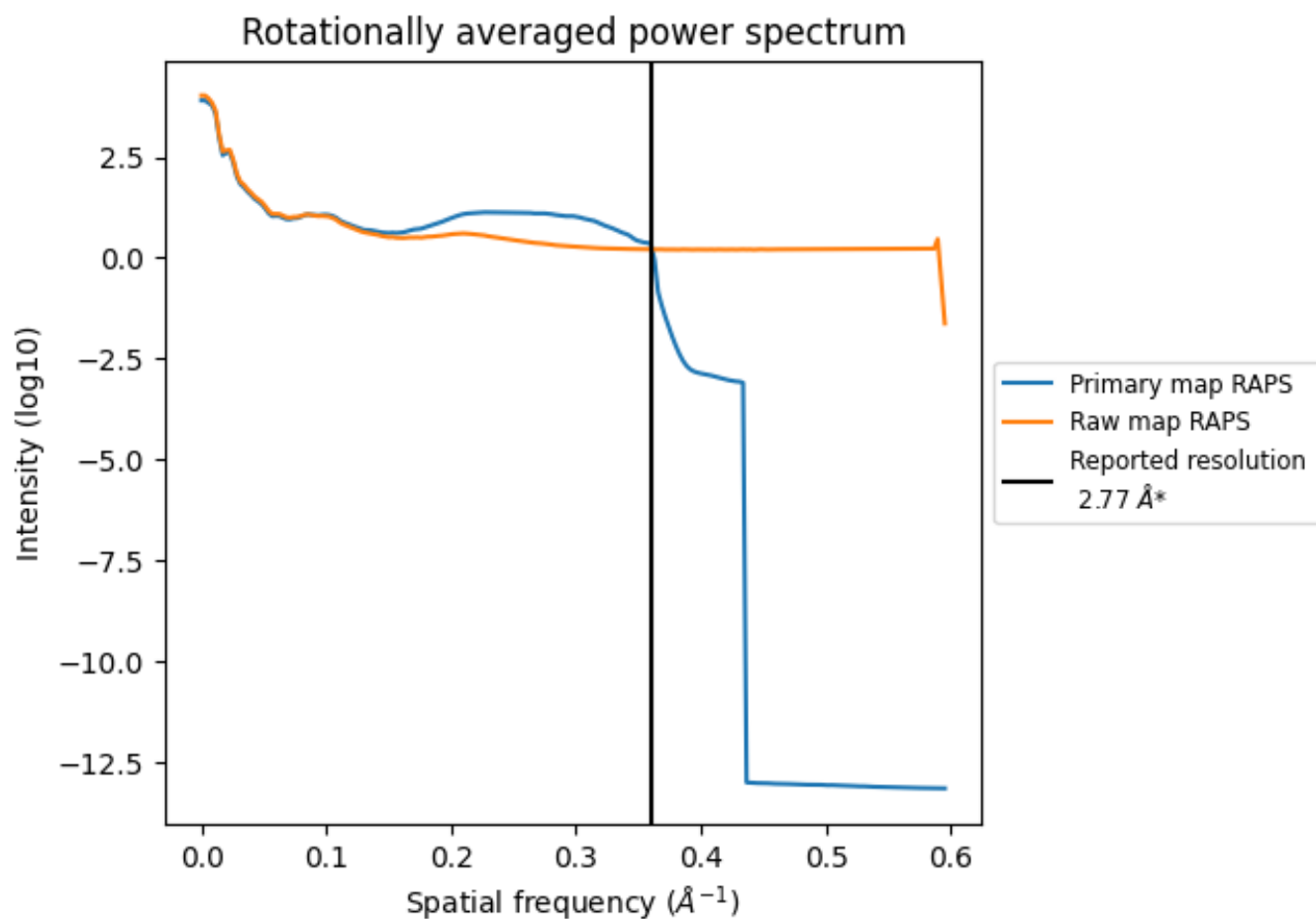
7.2 Volume estimate [i](#)



The volume at the recommended contour level is 62 nm³; this corresponds to an approximate mass of 56 kDa.

The volume estimate graph shows how the enclosed volume varies with the contour level. The recommended contour level is shown as a vertical line and the intersection between the line and the curve gives the volume of the enclosed surface at the given level.

7.3 Rotationally averaged power spectrum [i](#)

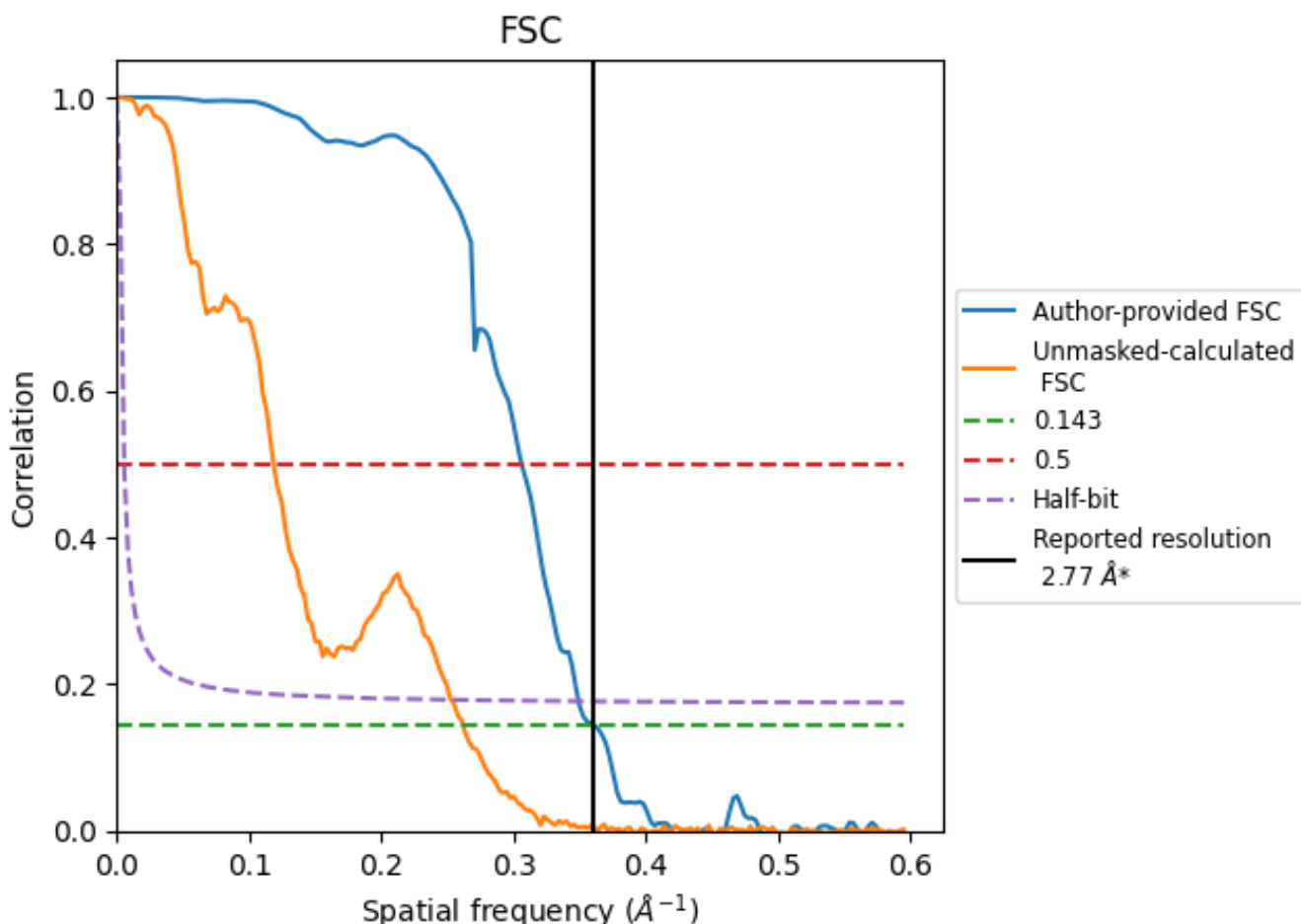


*Reported resolution corresponds to spatial frequency of 0.361 Å⁻¹

8 Fourier-Shell correlation [i](#)

Fourier-Shell Correlation (FSC) is the most commonly used method to estimate the resolution of single-particle and subtomogram-averaged maps. The shape of the curve depends on the imposed symmetry, mask and whether or not the two 3D reconstructions used were processed from a common reference. The reported resolution is shown as a black line. A curve is displayed for the half-bit criterion in addition to lines showing the 0.143 gold standard cut-off and 0.5 cut-off.

8.1 FSC [i](#)



*Reported resolution corresponds to spatial frequency of 0.361 Å⁻¹

8.2 Resolution estimates [i](#)

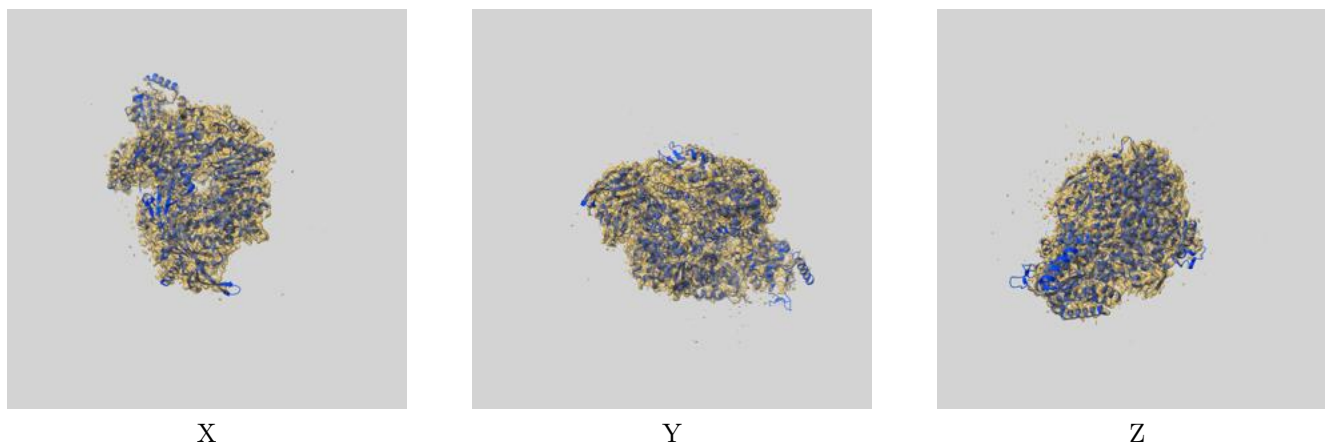
Resolution estimate (Å)	Estimation criterion (FSC cut-off)		
	0.143	0.5	Half-bit
Reported by author	2.77	-	-
Author-provided FSC curve	2.77	3.27	2.86
Unmasked-calculated*	3.82	8.43	3.96

*Resolution estimate based on FSC curve calculated by comparison of deposited half-maps. The value from deposited half-maps intersecting FSC 0.143 CUT-OFF 3.82 differs from the reported value 2.77 by more than 10 %

9 Map-model fit [i](#)

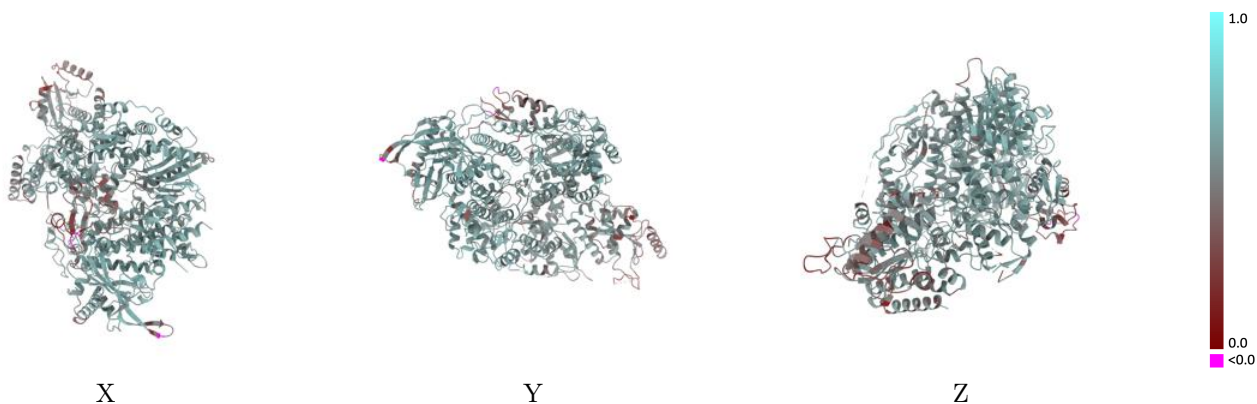
This section contains information regarding the fit between EMDB map EMD-19366 and PDB model 8RMP. Per-residue inclusion information can be found in section [3](#) on page [5](#).

9.1 Map-model overlay [i](#)



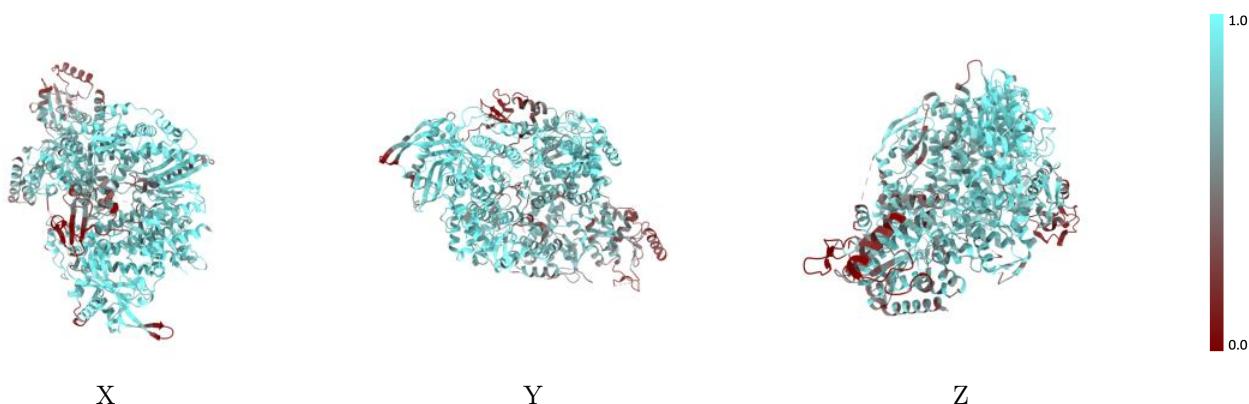
The images above show the 3D surface view of the map at the recommended contour level 0.5 at 50% transparency in yellow overlaid with a ribbon representation of the model coloured in blue. These images allow for the visual assessment of the quality of fit between the atomic model and the map.

9.2 Q-score mapped to coordinate model [i](#)



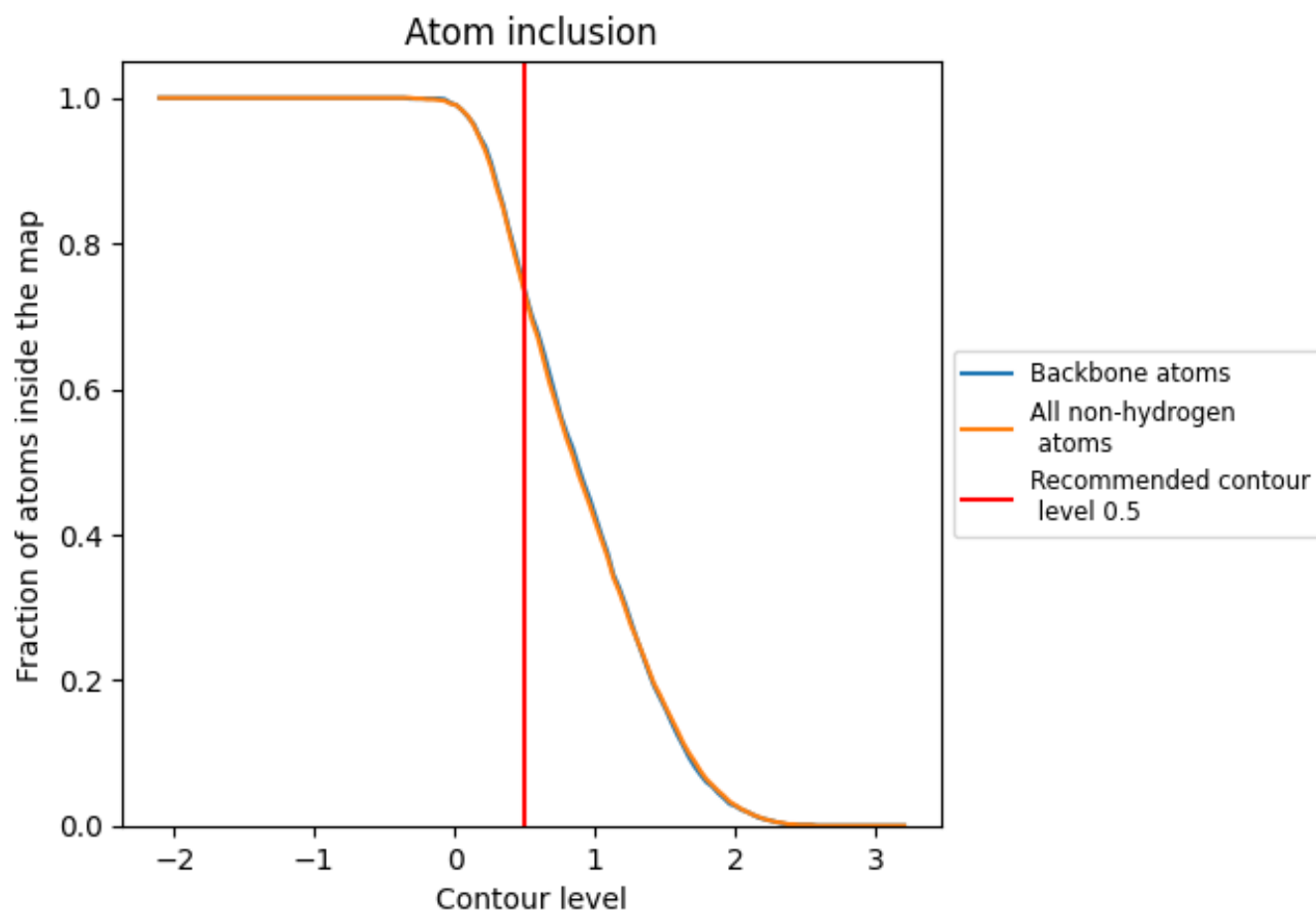
The images above show the model with each residue coloured according to its Q-score. This shows their resolvability in the map with higher Q-score values reflecting better resolvability. Please note: Q-score is calculating the resolvability of atoms, and thus high values are only expected at resolutions at which atoms can be resolved. Low Q-score values may therefore be expected for many entries.

9.3 Atom inclusion mapped to coordinate model [i](#)



The images above show the model with each residue coloured according to its atom inclusion. This shows to what extent they are inside the map at the recommended contour level (0.5).









9.4 Atom inclusion [i](#)



At the recommended contour level, 74% of all backbone atoms, 73% of all non-hydrogen atoms, are inside the map.

9.5 Map-model fit summary [i](#)

The table lists the average atom inclusion at the recommended contour level (0.5) and Q-score for the entire model and for each chain.

Chain	Atom inclusion	Q-score
All	 0.7340	 0.5540
A	 0.7210	 0.5410
B	 0.7710	 0.5640
C	 0.7470	 0.5640

