



# Full wwPDB X-ray Structure Validation Report ⓘ

Jun 15, 2020 – 11:42 pm BST

PDB ID : 4RJY  
Title : Crystal structure of E. coli L-Threonine Aldolase in complex with a non-covalently uncleaved bound L-serine substrate  
Authors : Safo, M.K.; Chowdhury, N.; Gandhi, A.K.  
Deposited on : 2014-10-11  
Resolution : 2.10 Å(reported)

This is a Full wwPDB X-ray Structure Validation Report for a publicly released PDB entry.

We welcome your comments at [validation@mail.wwpdb.org](mailto:validation@mail.wwpdb.org)

A user guide is available at

<https://www.wwpdb.org/validation/2017/XrayValidationReportHelp>

with specific help available everywhere you see the ⓘ symbol.

---

The following versions of software and data (see [references ⓘ](#)) were used in the production of this report:

MolProbity : 4.02b-467  
Mogul : 1.8.5 (274361), CSD as541be (2020)  
Xtriage (Phenix) : 1.13  
EDS : 2.11  
Percentile statistics : 20191225.v01 (using entries in the PDB archive December 25th 2019)  
Refmac : 5.8.0158  
CCP4 : 7.0.044 (Gargrove)  
Ideal geometry (proteins) : Engh & Huber (2001)  
Ideal geometry (DNA, RNA) : Parkinson et al. (1996)  
Validation Pipeline (wwPDB-VP) : 2.11

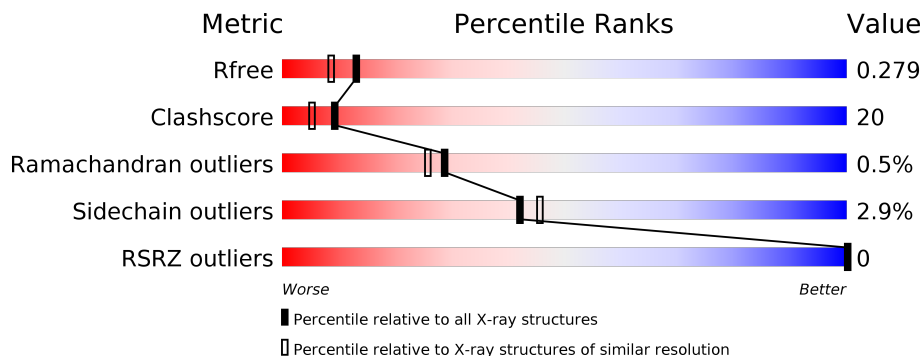
# 1 Overall quality at a glance

The following experimental techniques were used to determine the structure:

*X-RAY DIFFRACTION*

The reported resolution of this entry is 2.10 Å.

Percentile scores (ranging between 0-100) for global validation metrics of the entry are shown in the following graphic. The table shows the number of entries on which the scores are based.



Metric	Whole archive (#Entries)	Similar resolution (#Entries, resolution range(Å))
$R_{free}$	130704	5197 (2.10-2.10)
Clashscore	141614	5710 (2.10-2.10)
Ramachandran outliers	138981	5647 (2.10-2.10)
Sidechain outliers	138945	5648 (2.10-2.10)
RSRZ outliers	127900	5083 (2.10-2.10)

The table below summarises the geometric issues observed across the polymeric chains and their fit to the electron density. The red, orange, yellow and green segments on the lower bar indicate the fraction of residues that contain outliers for  $\geq 3$ , 2, 1 and 0 types of geometric quality criteria respectively. A grey segment represents the fraction of residues that are not modelled. The numeric value for each fraction is indicated below the corresponding segment, with a dot representing fractions  $\leq 5\%$ . The upper red bar (where present) indicates the fraction of residues that have poor fit to the electron density. The numeric value is given above the bar.

Mol	Chain	Length	Quality of chain
1	A	333	
1	B	333	
1	C	333	
1	D	333	

## 2 Entry composition [i](#)

There are 4 unique types of molecules in this entry. The entry contains 11165 atoms, of which 0 are hydrogens and 0 are deuteriums.

In the tables below, the ZeroOcc column contains the number of atoms modelled with zero occupancy, the AltConf column contains the number of residues with at least one atom in alternate conformation and the Trace column contains the number of residues modelled with at most 2 atoms.

- Molecule 1 is a protein called Low specificity L-threonine aldolase.

Mol	Chain	Residues	Atoms						ZeroOcc	AltConf	Trace
			Total	C	N	O	P	S			
1	A	332	2563	1606	459	481	1	16	0	0	0
1	B	332	2563	1606	459	481	1	16	0	0	0
1	C	332	2563	1606	459	481	1	16	0	0	0
1	D	332	2563	1606	459	481	1	16	0	0	0

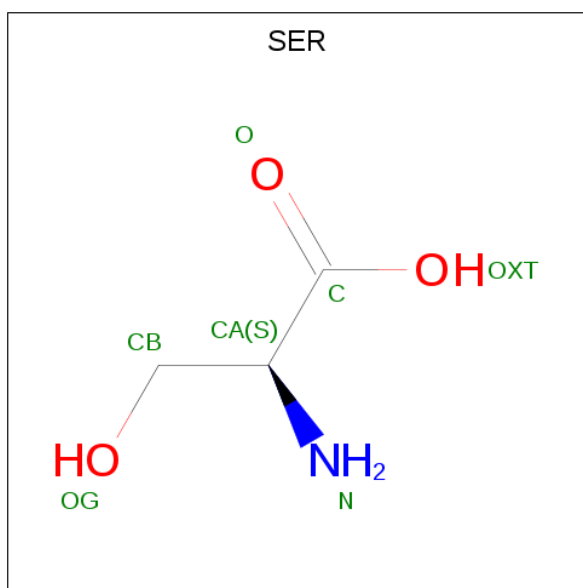
There are 8 discrepancies between the modelled and reference sequences:

Chain	Residue	Modelled	Actual	Comment	Reference
A	158	LYS	GLU	CONFLICT	UNP L4EJM2
A	256	THR	ALA	CONFLICT	UNP L4EJM2
B	158	LYS	GLU	CONFLICT	UNP L4EJM2
B	256	THR	ALA	CONFLICT	UNP L4EJM2
C	158	LYS	GLU	CONFLICT	UNP L4EJM2
C	256	THR	ALA	CONFLICT	UNP L4EJM2
D	158	LYS	GLU	CONFLICT	UNP L4EJM2
D	256	THR	ALA	CONFLICT	UNP L4EJM2

- Molecule 2 is SODIUM ION (three-letter code: NA) (formula: Na).

Mol	Chain	Residues	Atoms		ZeroOcc	AltConf
2	B	2	Total 2	Na 2	0	0
2	A	1	Total 1	Na 1	0	0
2	D	2	Total 2	Na 2	0	0
2	C	1	Total 1	Na 1	0	0

- Molecule 3 is SERINE (three-letter code: SER) (formula:  $C_3H_7NO_3$ ).



Mol	Chain	Residues	Atoms				ZeroOcc	AltConf
			Total	C	N	O		
3	A	1	14	6	2	6	0	1
3	B	1	14	6	2	6	0	1
3	C	1	14	6	2	6	0	1
3	D	1	14	6	2	6	0	1

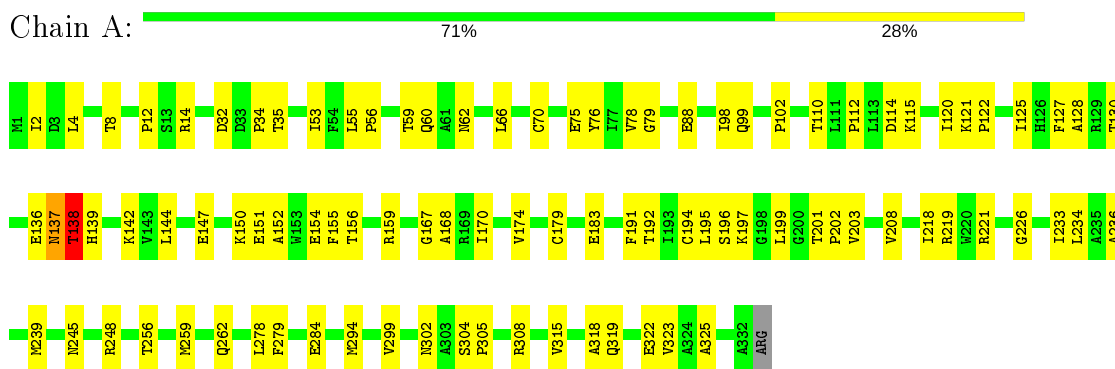
- Molecule 4 is water.

Mol	Chain	Residues	Atoms		ZeroOcc	AltConf
			Total	O		
4	A	230	230	230	0	0
4	B	194	194	194	0	0
4	C	207	207	207	0	0
4	D	220	220	220	0	0

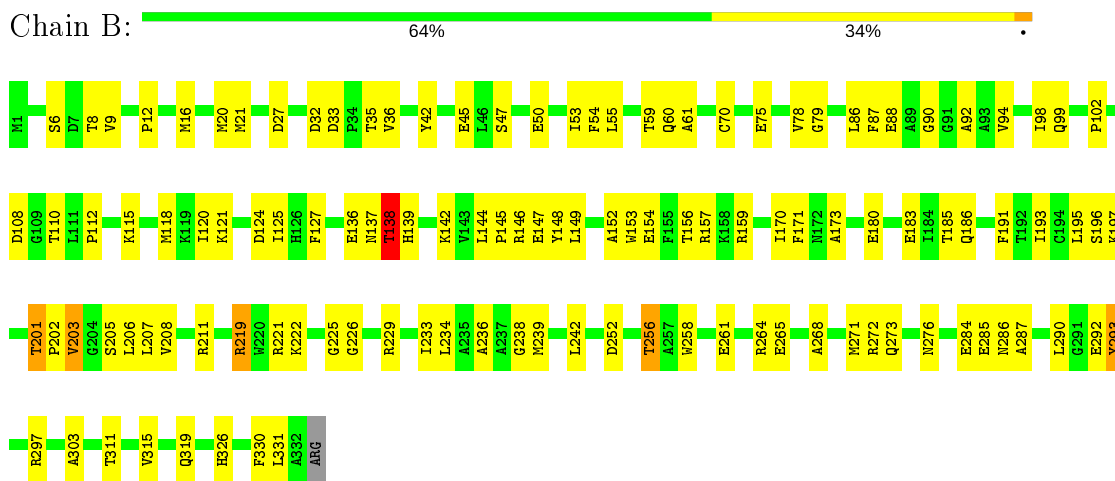
### 3 Residue-property plots [i](#)

These plots are drawn for all protein, RNA and DNA chains in the entry. The first graphic for a chain summarises the proportions of the various outlier classes displayed in the second graphic. The second graphic shows the sequence view annotated by issues in geometry and electron density. Residues are color-coded according to the number of geometric quality criteria for which they contain at least one outlier: green = 0, yellow = 1, orange = 2 and red = 3 or more. A red dot above a residue indicates a poor fit to the electron density ( $RSRZ > 2$ ). Stretches of 2 or more consecutive residues without any outlier are shown as a green connector. Residues present in the sample, but not in the model, are shown in grey.

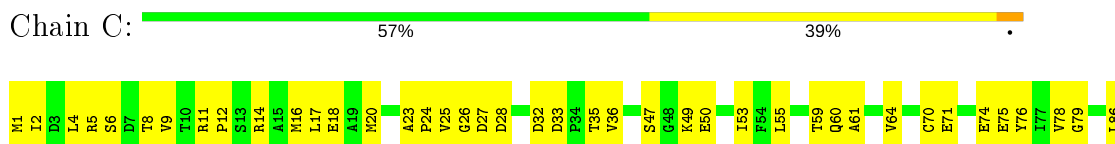
- Molecule 1: Low specificity L-threonine aldolase

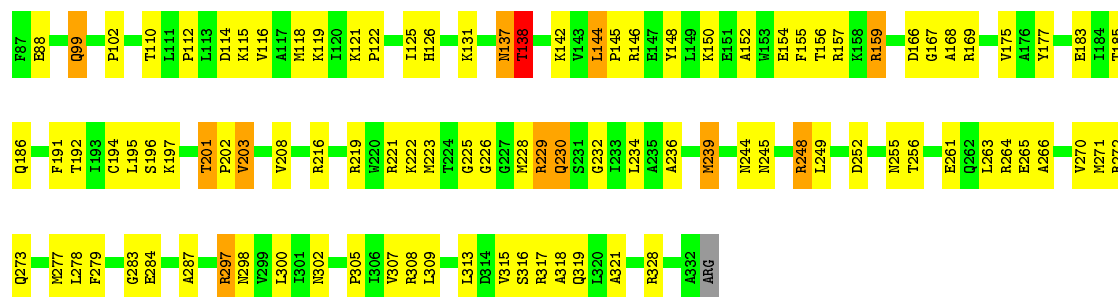


- Molecule 1: Low specificity L-threonine aldolase



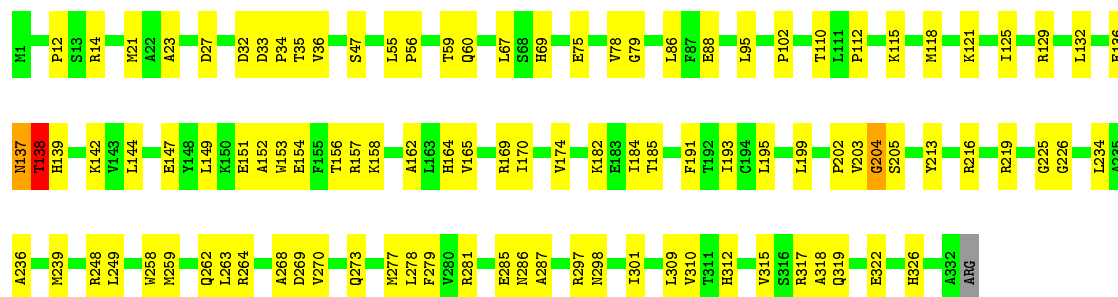
- Molecule 1: Low specificity L-threonine aldolase





- Molecule 1: Low specificity L-threonine aldolase

Chain D: 69% 30%



## 4 Data and refinement statistics

Property	Value	Source
Space group	P 1 21 1	Depositor
Cell constants a, b, c, $\alpha$ , $\beta$ , $\gamma$	77.16Å 104.88Å 84.91Å 90.00° 92.49° 90.00°	Depositor
Resolution (Å)	30.00 – 2.10 32.80 – 2.10	Depositor EDS
% Data completeness (in resolution range)	97.6 (30.00-2.10) 97.6 (32.80-2.10)	Depositor EDS
$R_{merge}$	0.09	Depositor
$R_{sym}$	(Not available)	Depositor
$\langle I/\sigma(I) \rangle$ <sup>1</sup>	3.07 (at 2.10Å)	Xtrriage
Refinement program	CNS	Depositor
R, $R_{free}$	0.212 , 0.279 0.214 , 0.279	Depositor DCC
$R_{free}$ test set	3884 reflections (5.03%)	wwPDB-VP
Wilson B-factor (Å <sup>2</sup> )	21.6	Xtrriage
Anisotropy	0.165	Xtrriage
Bulk solvent $k_{sol}$ (e/Å <sup>3</sup> ), $B_{sol}$ (Å <sup>2</sup> )	0.35 , 45.1	EDS
L-test for twinning <sup>2</sup>	$\langle  L  \rangle = 0.42$ , $\langle L^2 \rangle = 0.25$	Xtrriage
Estimated twinning fraction	0.056 for h,-k,-l	Xtrriage
$F_o, F_c$ correlation	0.94	EDS
Total number of atoms	11165	wwPDB-VP
Average B, all atoms (Å <sup>2</sup> )	27.0	wwPDB-VP

Xtrriage's analysis on translational NCS is as follows: *The largest off-origin peak in the Patterson function is 4.84% of the height of the origin peak. No significant pseudotranslation is detected.*

<sup>1</sup>Intensities estimated from amplitudes.

<sup>2</sup>Theoretical values of  $\langle |L| \rangle$ ,  $\langle L^2 \rangle$  for acentric reflections are 0.5, 0.333 respectively for untwinned datasets, and 0.375, 0.2 for perfectly twinned datasets.

## 5 Model quality [i](#)

### 5.1 Standard geometry [i](#)

Bond lengths and bond angles in the following residue types are not validated in this section: NA, LLP

The Z score for a bond length (or angle) is the number of standard deviations the observed value is removed from the expected value. A bond length (or angle) with  $|Z| > 5$  is considered an outlier worth inspection. RMSZ is the root-mean-square of all Z scores of the bond lengths (or angles).

Mol	Chain	Bond lengths		Bond angles	
		RMSZ	# Z  >5	RMSZ	# Z  >5
1	A	0.43	0/2582	0.71	1/3496 (0.0%)
1	B	0.45	0/2582	0.69	1/3496 (0.0%)
1	C	0.42	0/2582	0.70	1/3496 (0.0%)
1	D	0.42	0/2582	0.71	2/3496 (0.1%)
All	All	0.43	0/10328	0.70	5/13984 (0.0%)

There are no bond length outliers.

All (5) bond angle outliers are listed below:

Mol	Chain	Res	Type	Atoms	Z	Observed(°)	Ideal(°)
1	D	138	THR	N-CA-C	-7.63	90.40	111.00
1	A	138	THR	N-CA-C	-7.30	91.28	111.00
1	C	138	THR	N-CA-C	-7.07	91.90	111.00
1	B	138	THR	N-CA-C	-6.11	94.50	111.00
1	D	204	GLY	N-CA-C	5.47	126.78	113.10

There are no chirality outliers.

There are no planarity outliers.

### 5.2 Too-close contacts [i](#)

In the following table, the Non-H and H(model) columns list the number of non-hydrogen atoms and hydrogen atoms in the chain respectively. The H(added) column lists the number of hydrogen atoms added and optimized by MolProbity. The Clashes column lists the number of clashes within the asymmetric unit, whereas Symm-Clashes lists symmetry related clashes.

Mol	Chain	Non-H	H(model)	H(added)	Clashes	Symm-Clashes
1	A	2563	0	2552	85	0
1	B	2563	0	2553	110	0

*Continued on next page...*



*Continued from previous page...*

Mol	Chain	Non-H	H(model)	H(added)	Clashes	Symm-Clashes
1	C	2563	0	2553	125	0
1	D	2563	0	2553	103	0
2	A	1	0	0	0	0
2	B	2	0	0	0	0
2	C	1	0	0	0	0
2	D	2	0	0	0	0
3	A	14	0	8	1	0
3	B	14	0	8	1	0
3	C	14	0	8	0	0
3	D	14	0	8	0	0
4	A	230	0	0	14	0
4	B	194	0	0	15	0
4	C	207	0	0	13	0
4	D	220	0	0	15	0
All	All	11165	0	10243	406	0

The all-atom clashscore is defined as the number of clashes found per 1000 atoms (including hydrogen atoms). The all-atom clashscore for this structure is 20.

All (406) close contacts within the same asymmetric unit are listed below, sorted by their clash magnitude.

Atom-1	Atom-2	Interatomic distance (Å)	Clash overlap (Å)
1:B:60:GLN:HE22	1:B:226:GLY:HA3	1.25	1.02
1:D:59:THR:HG23	1:D:88:GLU:HG2	1.37	1.02
1:B:12:PRO:HG3	1:B:202:PRO:HG3	1.43	1.01
1:A:60:GLN:HE22	1:A:226:GLY:HA3	1.23	1.00
1:A:219:ARG:HG2	1:C:125:ILE:HG22	1.44	0.97
1:C:167:GLY:H	1:C:192:THR:HG22	1.30	0.96
1:D:278:LEU:HD11	1:D:309:LEU:HD12	1.49	0.95
1:D:236:ALA:HA	1:D:239:MET:HE2	1.47	0.94
1:B:47:SER:HB2	1:B:185:THR:HG21	1.49	0.93
1:A:12:PRO:HG3	1:A:202:PRO:HG3	1.53	0.89
1:A:137:ASN:HD22	1:A:138:THR:N	1.72	0.88
1:B:153:TRP:O	1:B:157:ARG:HG2	1.75	0.86
1:C:60:GLN:HE22	1:C:226:GLY:HA3	1.39	0.86
1:B:55:LEU:HD13	1:B:61:ALA:HA	1.58	0.84
1:A:59:THR:HG23	1:A:88:GLU:HG2	1.60	0.82
1:D:12:PRO:HG3	1:D:202:PRO:HG3	1.58	0.82
1:C:12:PRO:HG3	1:C:202:PRO:HG3	1.60	0.81
1:C:196:SER:HA	1:C:201:THR:HG22	1.65	0.79
1:C:138:THR:HG22	4:C:706:HOH:O	1.83	0.78

*Continued on next page...*

*Continued from previous page...*

Atom-1	Atom-2	Interatomic distance (Å)	Clash overlap (Å)
1:B:59:THR:HG23	1:B:88:GLU:HG2	1.64	0.77
1:D:115:LYS:HA	1:D:118:MET:HE3	1.67	0.76
1:B:264:ARG:HH21	1:B:273:GLN:HE21	1.34	0.75
1:A:138:THR:HA	1:A:142:LYS:O	1.87	0.75
1:C:167:GLY:N	1:C:192:THR:HG22	2.02	0.75
1:A:75:GLU:HG3	1:A:130:THR:HA	1.68	0.75
1:D:60:GLN:HE22	1:D:226:GLY:HA3	1.52	0.75
1:B:256:THR:HG21	1:B:276:ASN:HA	1.68	0.74
1:C:155:PHE:O	1:C:159:ARG:HG3	1.88	0.73
1:B:219:ARG:NH1	1:D:125:ILE:HA	2.04	0.73
1:B:196:SER:HA	1:B:201:THR:HG22	1.68	0.73
1:D:182:LYS:HA	1:D:185:THR:HG22	1.71	0.73
1:C:78:VAL:O	1:C:102:PRO:HA	1.89	0.72
1:C:47:SER:HB2	1:C:185:THR:HG21	1.71	0.72
1:B:196:SER:CA	1:B:201:THR:HG22	2.19	0.72
1:C:4:LEU:HD21	1:C:315:VAL:HG21	1.71	0.72
1:C:26:GLY:HA3	1:C:32:ASP:O	1.90	0.72
1:C:196:SER:CA	1:C:201:THR:HG22	2.20	0.72
1:A:60:GLN:NE2	1:A:226:GLY:HA3	2.03	0.71
1:B:285:GLU:HG3	1:B:286:ASN:OD1	1.91	0.71
1:D:153:TRP:O	1:D:157:ARG:HG2	1.91	0.71
1:D:55:LEU:HD23	1:D:60:GLN:HE21	1.56	0.71
1:A:203:VAL:HG21	1:A:234:LEU:HD13	1.72	0.70
1:B:315:VAL:HA	1:B:319:GLN:OE1	1.90	0.69
1:A:203:VAL:CG2	1:A:234:LEU:HD13	2.21	0.69
1:B:147:GLU:CD	1:B:147:GLU:H	1.96	0.69
1:D:138:THR:HG21	1:D:169:ARG:HB2	1.75	0.69
1:B:60:GLN:NE2	1:B:226:GLY:HA3	2.05	0.68
1:A:147:GLU:O	1:A:151:GLU:HG3	1.92	0.68
1:A:125:ILE:HG22	1:C:219:ARG:HG2	1.75	0.68
1:C:195:LEU:HB2	1:C:201:THR:HG21	1.75	0.68
1:D:312:HIS:CE1	1:D:315:VAL:HG23	2.28	0.68
1:D:170:ILE:O	1:D:174:VAL:HG23	1.94	0.67
1:C:216:ARG:HD2	4:C:627:HOH:O	1.94	0.66
1:A:78:VAL:HG22	1:A:79:GLY:N	2.10	0.66
1:C:261:GLU:O	1:C:265:GLU:HG3	1.96	0.66
1:D:137:ASN:HD22	1:D:138:THR:N	1.94	0.66
1:D:138:THR:HA	1:D:142:LYS:O	1.96	0.66
1:C:146:ARG:HG3	1:C:177:TYR:CE1	2.32	0.65
1:C:27:ASP:H	1:C:32:ASP:HB2	1.61	0.65
1:D:264:ARG:HG2	1:D:264:ARG:HH11	1.62	0.65

*Continued on next page...*

*Continued from previous page...*

Atom-1	Atom-2	Interatomic distance (Å)	Clash overlap (Å)
1:D:78:VAL:O	1:D:102:PRO:HA	1.96	0.65
1:D:47:SER:HB2	1:D:185:THR:HG21	1.79	0.65
1:A:201:THR:HG23	1:A:202:PRO:HD2	1.77	0.64
1:C:297:ARG:HH11	1:C:297:ARG:HG3	1.62	0.64
1:D:112:PRO:HB2	1:D:115:LYS:HB2	1.79	0.64
1:C:196:SER:N	1:C:201:THR:HG22	2.11	0.64
1:D:147:GLU:H	1:D:147:GLU:CD	1.99	0.64
1:B:115:LYS:HB3	1:B:115:LYS:NZ	2.11	0.64
1:B:256:THR:HG22	1:B:311:THR:CG2	2.28	0.63
1:B:138:THR:HA	1:B:142:LYS:O	1.98	0.63
1:C:168:ALA:HA	1:C:194:CYS:HB2	1.79	0.63
1:A:137:ASN:HD22	1:A:138:THR:H	1.46	0.63
1:D:32:ASP:O	1:D:34:PRO:HD3	1.98	0.63
1:B:236:ALA:HA	1:B:239:MET:HE2	1.81	0.63
1:C:8:THR:HG22	1:C:197:LLP:HG3	1.80	0.62
1:C:270:VAL:HB	4:C:630:HOH:O	1.98	0.62
1:D:149:LEU:HD22	4:D:597:HOH:O	1.99	0.62
1:B:264:ARG:HH21	1:B:273:GLN:NE2	1.97	0.62
1:C:192:THR:HG21	4:C:597:HOH:O	2.00	0.62
1:C:167:GLY:H	1:C:192:THR:CG2	2.08	0.62
1:D:264:ARG:HE	1:D:270:VAL:HB	1.63	0.62
1:A:112:PRO:HB2	1:A:115:LYS:HB2	1.81	0.62
1:D:154:GLU:O	1:D:158:LYS:HG3	1.98	0.62
1:A:294:MET:HB3	1:A:299:VAL:HB	1.80	0.62
1:B:125:ILE:HG22	1:D:219:ARG:HG3	1.81	0.61
1:A:179:CYS:HB2	1:A:183:GLU:OE1	2.00	0.61
1:B:252:ASP:O	1:B:256:THR:HG23	1.99	0.61
1:C:230:GLN:H	1:C:230:GLN:HE21	1.49	0.61
1:D:59:THR:HG23	1:D:88:GLU:CG	2.23	0.61
1:D:301:ILE:C	1:D:301:ILE:HD12	2.21	0.61
1:B:236:ALA:HA	1:B:239:MET:CE	2.32	0.60
1:C:150:LYS:HG2	1:C:154:GLU:OE2	2.01	0.60
1:D:318:ALA:HB2	4:D:545:HOH:O	1.99	0.60
1:A:138:THR:HG22	4:A:641:HOH:O	2.01	0.60
1:A:147:GLU:H	1:A:147:GLU:CD	2.04	0.60
1:C:14:ARG:O	1:C:18:GLU:HG3	2.02	0.60
1:A:136:GLU:OE2	1:A:139:HIS:HD2	1.85	0.59
1:C:297:ARG:O	1:C:298:ASN:HB2	2.01	0.59
1:B:8:THR:HG22	1:B:197:LLP:HE3	1.83	0.59
1:D:136:GLU:OE2	1:D:139:HIS:HD2	1.85	0.59
1:A:75:GLU:CG	1:A:130:THR:HA	2.32	0.59

*Continued on next page...*

*Continued from previous page...*

Atom-1	Atom-2	Interatomic distance (Å)	Clash overlap (Å)
1:B:152:ALA:O	1:B:156:THR:HG23	2.04	0.58
3:B:403[A]:SER:N	4:B:666:HOH:O	2.36	0.58
1:B:50:GLU:HG3	4:B:632:HOH:O	2.03	0.58
1:C:297:ARG:NH1	1:C:297:ARG:HG3	2.15	0.58
1:A:152:ALA:O	1:A:156:THR:HG23	2.03	0.58
1:B:33:ASP:HB3	1:B:36:VAL:HB	1.86	0.58
1:C:115:LYS:HG3	4:C:654:HOH:O	2.04	0.58
1:B:268:ALA:HA	4:B:564:HOH:O	2.03	0.58
1:C:8:THR:HG22	1:C:197:LLP:HE2	1.86	0.57
1:D:174:VAL:HG22	1:D:184:ILE:HD11	1.85	0.57
1:B:112:PRO:HA	4:B:638:HOH:O	2.05	0.57
1:B:35:THR:HG23	1:B:239:MET:HE1	1.85	0.57
1:B:138:THR:HG22	4:B:692:HOH:O	2.04	0.57
1:C:60:GLN:HB2	1:D:225:GLY:HA3	1.86	0.57
1:A:60:GLN:HE22	1:A:226:GLY:CA	2.07	0.57
1:D:236:ALA:HA	1:D:239:MET:CE	2.30	0.57
1:C:114:ASP:O	1:C:118:MET:HG3	2.05	0.57
1:B:238:GLY:O	1:B:242:LEU:HG	2.05	0.56
1:A:128:ALA:HA	4:A:515:HOH:O	2.04	0.56
1:C:59:THR:HG23	1:C:88:GLU:HG2	1.85	0.56
1:D:78:VAL:HG22	1:D:79:GLY:N	2.19	0.56
1:A:127:PHE:O	1:C:219:ARG:NH2	2.38	0.56
1:A:170:ILE:O	1:A:174:VAL:HG23	2.04	0.56
1:D:110:THR:HG22	1:D:144:LEU:HG	1.87	0.56
1:B:196:SER:N	1:B:201:THR:HG22	2.21	0.56
1:C:99:GLN:HE21	1:C:99:GLN:HA	1.70	0.56
1:B:287:ALA:O	1:B:303:ALA:HB1	2.04	0.56
1:A:150:LYS:O	1:A:154:GLU:HG3	2.06	0.56
1:A:2:ILE:HD13	1:A:319:GLN:HB3	1.88	0.56
1:C:230:GLN:H	1:C:230:GLN:NE2	2.02	0.56
1:A:60:GLN:HB2	1:B:225:GLY:HA3	1.88	0.55
1:A:78:VAL:O	1:A:102:PRO:HA	2.05	0.55
1:C:137:ASN:HD21	1:C:144:LEU:H	1.54	0.55
1:C:24:PRO:HD2	1:C:35:THR:OG1	2.06	0.55
1:C:271:MET:O	1:C:272:ARG:HB3	2.05	0.55
1:C:138:THR:HA	1:C:142:LYS:O	2.06	0.55
1:C:16:MET:O	1:C:20:MET:HG3	2.07	0.55
1:C:55:LEU:HD22	1:C:61:ALA:HA	1.88	0.55
1:A:150:LYS:HE3	4:A:591:HOH:O	2.07	0.55
1:A:12:PRO:CG	1:A:202:PRO:HG3	2.32	0.55
1:B:6:SER:O	1:B:9:VAL:HG22	2.06	0.55

*Continued on next page...*

*Continued from previous page...*

Atom-1	Atom-2	Interatomic distance (Å)	Clash overlap (Å)
1:B:92:ALA:HB3	4:B:532:HOH:O	2.07	0.55
1:D:285:GLU:C	1:D:286:ASN:HD22	2.11	0.55
1:D:203:VAL:HG12	1:D:204:GLY:N	2.22	0.55
1:A:78:VAL:HG22	1:A:79:GLY:H	1.70	0.54
1:B:138:THR:O	1:B:138:THR:HG22	2.07	0.54
1:B:219:ARG:HG2	4:B:645:HOH:O	2.06	0.54
1:C:229:ARG:HB3	1:C:230:GLN:NE2	2.22	0.54
1:C:6:SER:O	1:C:9:VAL:HG22	2.07	0.54
1:A:318:ALA:HB2	4:A:655:HOH:O	2.07	0.54
1:D:138:THR:CG2	1:D:169:ARG:HB2	2.36	0.54
1:A:8:THR:HG22	1:A:197:LLP:HG3	1.90	0.54
1:C:222:LYS:O	4:C:525:HOH:O	2.18	0.54
1:A:218:ILE:HD11	4:A:688:HOH:O	2.08	0.53
1:C:11:ARG:NH1	4:C:513:HOH:O	2.41	0.53
1:D:277:MET:HG2	1:D:310:VAL:HG22	1.89	0.53
1:B:137:ASN:O	1:B:138:THR:HB	2.08	0.53
1:B:78:VAL:HG22	1:B:79:GLY:N	2.24	0.53
1:C:8:THR:CG2	1:C:197:LLP:HE2	2.39	0.53
1:D:219:ARG:NH1	4:D:578:HOH:O	2.41	0.53
1:A:53:ILE:HD11	1:A:221:ARG:HD3	1.91	0.53
1:B:138:THR:HG21	4:B:504:HOH:O	2.08	0.53
1:C:230:GLN:N	1:C:230:GLN:NE2	2.57	0.53
1:D:301:ILE:O	1:D:301:ILE:HD12	2.08	0.53
1:B:256:THR:HG21	1:B:276:ASN:CA	2.37	0.53
1:C:53:ILE:HD11	1:C:221:ARG:HD3	1.91	0.53
1:A:256:THR:HG23	1:A:278:LEU:HD22	1.90	0.52
1:C:264:ARG:HD3	4:C:630:HOH:O	2.10	0.52
1:B:264:ARG:NH2	1:B:273:GLN:HE21	2.07	0.52
1:D:137:ASN:O	1:D:138:THR:HB	2.09	0.52
1:C:195:LEU:C	1:C:201:THR:HG22	2.30	0.52
1:B:211:ARG:NH1	1:B:211:ARG:HB2	2.25	0.52
1:A:167:GLY:H	1:A:192:THR:CG2	2.23	0.52
1:A:201:THR:HG23	1:A:202:PRO:CD	2.40	0.51
1:C:112:PRO:HB2	1:C:115:LYS:HG2	1.91	0.51
1:C:49:LYS:HE2	1:C:185:THR:HG22	1.91	0.51
1:C:25:VAL:HG22	4:D:569:HOH:O	2.10	0.51
1:D:264:ARG:HG2	1:D:264:ARG:NH1	2.25	0.51
1:B:118:MET:HE1	4:B:616:HOH:O	2.11	0.51
1:B:125:ILE:HG22	1:D:219:ARG:CG	2.41	0.51
1:D:12:PRO:CG	1:D:202:PRO:HG3	2.37	0.51
1:D:297:ARG:HD3	1:D:326:HIS:ND1	2.25	0.51

*Continued on next page...*

*Continued from previous page...*

Atom-1	Atom-2	Interatomic distance (Å)	Clash overlap (Å)
1:B:331:LEU:HD11	4:B:564:HOH:O	2.11	0.51
1:D:147:GLU:O	1:D:151:GLU:HG3	2.11	0.51
1:B:108:ASP:OD1	1:B:110:THR:HG23	2.10	0.51
1:B:219:ARG:HE	1:D:129:ARG:HD3	1.75	0.51
1:C:33:ASP:OD1	1:C:232:GLY:HA3	2.11	0.51
1:D:319:GLN:O	1:D:322:GLU:HB2	2.11	0.50
1:A:195:LEU:O	1:A:201:THR:HB	2.11	0.50
1:A:32:ASP:O	1:A:34:PRO:HD3	2.11	0.50
1:C:284:GLU:OE1	1:C:305:PRO:HG3	2.11	0.50
1:D:317:ARG:HG3	1:D:317:ARG:HH11	1.76	0.50
1:B:136:GLU:OE2	1:B:139:HIS:HD2	1.94	0.50
1:B:78:VAL:O	1:B:102:PRO:HA	2.12	0.50
1:D:164:HIS:CD2	4:D:644:HOH:O	2.64	0.50
1:D:239:MET:HE3	4:D:635:HOH:O	2.12	0.50
1:C:137:ASN:O	1:C:138:THR:HB	2.10	0.50
1:B:219:ARG:HH21	1:D:129:ARG:HG2	1.76	0.49
1:B:120:ILE:CD1	1:B:159:ARG:HD3	2.43	0.49
1:C:225:GLY:HA3	1:D:60:GLN:HB2	1.93	0.49
1:C:28:ASP:HB3	1:C:228:MET:O	2.12	0.49
1:B:53:ILE:CG2	1:B:207:LEU:HB3	2.42	0.49
1:D:138:THR:HG21	4:D:515:HOH:O	2.12	0.49
1:B:145:PRO:O	1:B:148:TYR:HB3	2.13	0.49
1:B:211:ARG:CZ	1:B:211:ARG:HB2	2.43	0.49
1:B:258:TRP:O	1:B:261:GLU:HB3	2.13	0.49
1:A:279:PHE:N	1:A:279:PHE:CD1	2.81	0.49
1:B:53:ILE:HD11	1:B:221:ARG:HD3	1.94	0.49
1:D:248:ARG:HG3	1:D:248:ARG:HH21	1.77	0.49
1:A:302:ASN:ND2	4:A:568:HOH:O	2.45	0.49
1:D:129:ARG:HG3	1:D:129:ARG:HH11	1.78	0.49
1:B:115:LYS:HB3	1:B:115:LYS:HZ2	1.76	0.48
1:D:115:LYS:HD2	1:D:118:MET:CE	2.44	0.48
1:A:55:LEU:HB3	1:A:56:PRO:HD2	1.95	0.48
1:C:234:LEU:HD21	1:D:234:LEU:HD21	1.94	0.48
1:C:137:ASN:ND2	1:C:144:LEU:HB2	2.27	0.48
1:D:14:ARG:HD3	4:D:571:HOH:O	2.14	0.48
1:D:23:ALA:HB2	1:D:236:ALA:HB2	1.94	0.48
1:D:297:ARG:O	1:D:298:ASN:HB2	2.14	0.48
1:D:213:TYR:OH	4:D:644:HOH:O	2.20	0.48
1:A:78:VAL:CG2	1:A:79:GLY:N	2.77	0.47
1:C:110:THR:HB	1:C:148:TYR:CZ	2.49	0.47
1:D:137:ASN:HD22	1:D:138:THR:H	1.60	0.47

*Continued on next page...*

*Continued from previous page...*

Atom-1	Atom-2	Interatomic distance (Å)	Clash overlap (Å)
1:D:249:LEU:HD22	4:D:551:HOH:O	2.14	0.47
1:A:319:GLN:O	1:A:323:VAL:HG23	2.13	0.47
1:B:54:PHE:HA	1:B:206:LEU:HD23	1.96	0.47
1:C:36:VAL:HG23	1:C:232:GLY:HA2	1.96	0.47
1:D:138:THR:HG21	1:D:169:ARG:CB	2.43	0.47
1:B:256:THR:HG22	1:B:311:THR:HG21	1.95	0.47
1:A:75:GLU:HB2	1:A:99:GLN:O	2.15	0.47
1:C:169:ARG:NH2	1:C:197:LLP:HE3	2.29	0.47
1:D:262:GLN:HA	1:D:262:GLN:NE2	2.29	0.47
1:D:56:PRO:HD2	1:D:60:GLN:NE2	2.30	0.47
1:C:137:ASN:HD22	1:C:138:THR:N	2.12	0.47
1:C:313:LEU:HD12	1:C:313:LEU:C	2.35	0.47
1:D:69:HIS:CE1	4:D:644:HOH:O	2.68	0.47
1:B:21:MET:O	1:B:21:MET:HG2	2.15	0.46
1:B:256:THR:CG2	1:B:276:ASN:HA	2.42	0.46
1:C:78:VAL:HG22	1:C:79:GLY:N	2.30	0.46
1:D:78:VAL:CG2	1:D:79:GLY:N	2.78	0.46
1:A:234:LEU:HD11	1:B:234:LEU:HD11	1.97	0.46
1:A:137:ASN:HD22	1:A:137:ASN:C	2.13	0.46
1:C:196:SER:HA	1:C:201:THR:O	2.14	0.46
1:C:2:ILE:CD1	1:C:319:GLN:HB3	2.46	0.46
1:C:266:ALA:HA	1:C:328:ARG:HE	1.79	0.46
1:D:286:ASN:O	1:D:287:ALA:C	2.53	0.46
1:D:59:THR:CG2	1:D:88:GLU:HG2	2.26	0.46
1:A:192:THR:HG21	4:A:658:HOH:O	2.14	0.46
1:A:4:LEU:HD21	1:A:315:VAL:HG21	1.98	0.46
1:D:263:LEU:O	1:D:268:ALA:HB3	2.16	0.46
1:B:180:GLU:HB2	1:B:183:GLU:HG3	1.98	0.46
1:C:1:MET:SD	1:C:300:LEU:HD21	2.56	0.46
1:C:223:MET:HG2	1:D:95:LEU:HD11	1.98	0.46
1:D:138:THR:CG2	4:D:515:HOH:O	2.64	0.46
1:A:121:LYS:HA	1:A:122:PRO:HD3	1.84	0.46
1:D:278:LEU:CD1	1:D:309:LEU:HD12	2.35	0.46
1:D:297:ARG:HD3	1:D:326:HIS:CE1	2.51	0.46
1:B:110:THR:HG21	1:B:145:PRO:HD2	1.97	0.46
1:C:146:ARG:HG3	1:C:177:TYR:CD1	2.51	0.46
1:C:60:GLN:O	1:C:64:VAL:HG23	2.15	0.46
1:A:191:PHE:CE1	1:A:208:VAL:HB	2.51	0.46
1:B:60:GLN:HE22	1:B:226:GLY:CA	2.11	0.46
1:B:110:THR:CG2	1:B:145:PRO:HD2	2.46	0.45
1:B:284:GLU:HG2	4:B:593:HOH:O	2.16	0.45

*Continued on next page...*

*Continued from previous page...*

Atom-1	Atom-2	Interatomic distance (Å)	Clash overlap (Å)
1:C:279:PHE:HA	1:C:307:VAL:O	2.16	0.45
1:C:126:HIS:CE1	4:C:623:HOH:O	2.70	0.45
1:B:191:PHE:HE2	1:B:193:ILE:HD11	1.81	0.45
1:B:191:PHE:CE1	1:B:208:VAL:HB	2.51	0.45
1:A:308:ARG:HD3	4:A:707:HOH:O	2.16	0.45
1:C:112:PRO:O	1:C:116:VAL:HG23	2.17	0.45
1:A:155:PHE:CE2	1:A:159:ARG:HD2	2.52	0.45
1:A:138:THR:HG21	4:A:673:HOH:O	2.17	0.45
1:B:121:LYS:HE3	1:C:86:LEU:CD1	2.45	0.45
1:B:195:LEU:C	1:B:201:THR:HG22	2.37	0.45
1:C:26:GLY:HA3	1:C:32:ASP:C	2.37	0.45
1:D:47:SER:O	1:D:185:THR:CG2	2.65	0.45
1:A:62:ASN:O	1:A:66:LEU:HG	2.17	0.45
1:B:54:PHE:C	1:B:55:LEU:HG	2.37	0.45
1:D:132:LEU:HD12	1:D:162:ALA:C	2.36	0.45
1:D:195:LEU:HD23	1:D:199:LEU:HD12	1.98	0.45
1:C:152:ALA:O	1:C:156:THR:HG23	2.17	0.45
1:B:211:ARG:NH1	1:B:211:ARG:CB	2.81	0.44
1:B:8:THR:CG2	1:B:197:LLP:HE3	2.47	0.44
1:C:191:PHE:CE1	1:C:208:VAL:HB	2.52	0.44
1:A:322:GLU:O	1:A:325:ALA:HB3	2.16	0.44
4:A:695:HOH:O	1:B:229:ARG:HG2	2.17	0.44
1:B:261:GLU:O	1:B:265:GLU:HG3	2.18	0.44
1:B:86:LEU:HD23	1:B:87:PHE:CE1	2.53	0.44
1:A:137:ASN:O	1:A:138:THR:HB	2.18	0.44
1:D:27:ASP:H	1:D:32:ASP:HB2	1.82	0.44
1:D:115:LYS:HD2	1:D:118:MET:HE3	1.98	0.44
1:D:258:TRP:CB	1:D:317:ARG:NH1	2.80	0.44
1:A:14:ARG:HB3	4:A:575:HOH:O	2.18	0.44
1:A:35:THR:HG23	1:A:239:MET:CE	2.48	0.44
1:A:59:THR:CG2	1:A:88:GLU:HG2	2.42	0.44
1:B:171:PHE:HB2	4:B:619:HOH:O	2.17	0.44
1:B:256:THR:CG2	1:B:311:THR:OG1	2.66	0.44
1:D:152:ALA:O	1:D:156:THR:HG23	2.18	0.44
1:A:121:LYS:HE3	1:D:86:LEU:CD1	2.48	0.44
1:B:70:CYS:HB2	1:B:98:ILE:HD13	2.00	0.44
1:C:137:ASN:ND2	1:C:144:LEU:H	2.16	0.44
1:C:110:THR:HB	1:C:148:TYR:CE1	2.52	0.44
1:A:2:ILE:CD1	1:A:319:GLN:HB3	2.48	0.44
1:B:16:MET:O	1:B:20:MET:HG3	2.18	0.44
1:A:167:GLY:H	1:A:192:THR:HG22	1.82	0.43

*Continued on next page...*



*Continued from previous page...*

Atom-1	Atom-2	Interatomic distance (Å)	Clash overlap (Å)
1:B:201:THR:HG23	1:B:203:VAL:N	2.33	0.43
1:B:159:ARG:NH1	1:B:159:ARG:HG2	2.34	0.43
1:C:159:ARG:HB3	1:C:159:ARG:HE	1.65	0.43
1:B:124:ASP:HB3	1:B:127:PHE:CD2	2.53	0.43
1:C:244:ASN:C	1:C:245:ASN:HD22	2.22	0.43
1:C:278:LEU:CD2	1:C:309:LEU:HB2	2.48	0.43
1:C:70:CYS:HA	1:C:74:GLU:OE1	2.18	0.43
1:C:229:ARG:HB3	1:C:230:GLN:HE22	1.81	0.43
1:B:170:ILE:O	1:B:173:ALA:HB3	2.18	0.43
1:B:191:PHE:CE2	1:B:193:ILE:HD11	2.54	0.43
1:B:27:ASP:H	1:B:32:ASP:HB2	1.83	0.43
1:C:53:ILE:HG23	1:C:55:LEU:HD11	2.00	0.43
1:D:286:ASN:HD22	1:D:286:ASN:N	2.15	0.43
1:A:168:ALA:HA	1:A:194:CYS:HB2	2.00	0.43
1:C:121:LYS:HA	1:C:122:PRO:HD3	1.90	0.43
1:B:292:GLU:O	1:B:293:TYR:C	2.57	0.43
1:D:138:THR:HG22	4:D:565:HOH:O	2.18	0.43
1:C:248:ARG:NH2	1:C:252:ASP:OD2	2.49	0.43
1:A:110:THR:HG22	1:A:144:LEU:HG	2.01	0.43
1:C:248:ARG:NE	4:C:539:HOH:O	2.40	0.43
1:C:2:ILE:HD13	1:C:319:GLN:HB3	2.00	0.43
1:D:139:HIS:HE1	4:D:589:HOH:O	2.01	0.43
1:D:216:ARG:HD2	4:D:577:HOH:O	2.18	0.43
1:A:120:ILE:CD1	1:A:159:ARG:HD3	2.48	0.42
1:A:196:SER:HA	1:A:201:THR:O	2.19	0.42
1:A:70:CYS:HB2	1:A:98:ILE:HD13	2.00	0.42
1:B:42:TYR:O	1:B:45:GLU:HB3	2.19	0.42
1:B:138:THR:CG2	4:B:504:HOH:O	2.67	0.42
1:C:256:THR:HG23	1:C:278:LEU:HD22	2.01	0.42
1:D:259:MET:HE3	1:D:263:LEU:HD11	2.00	0.42
1:A:304:SER:OG	1:A:305:PRO:HD2	2.20	0.42
1:B:256:THR:HG21	1:B:276:ASN:C	2.39	0.42
1:B:276:ASN:HB2	1:B:311:THR:OG1	2.19	0.42
1:C:279:PHE:N	1:C:279:PHE:CD1	2.87	0.42
1:C:316:SER:OG	1:C:319:GLN:HG3	2.20	0.42
1:D:278:LEU:HD12	1:D:278:LEU:C	2.39	0.42
1:A:248:ARG:HG3	1:A:248:ARG:HH11	1.85	0.42
1:B:219:ARG:HH11	1:B:219:ARG:HG3	1.85	0.42
1:C:137:ASN:HD22	1:C:138:THR:H	1.67	0.42
1:C:202:PRO:O	1:C:203:VAL:HG12	2.20	0.42
1:A:284:GLU:OE2	1:A:284:GLU:O	2.38	0.42

*Continued on next page...*

*Continued from previous page...*

Atom-1	Atom-2	Interatomic distance (Å)	Clash overlap (Å)
1:B:20:MET:O	1:B:233:ILE:HG13	2.20	0.42
1:D:193:ILE:O	1:D:205:SER:HA	2.20	0.42
1:D:35:THR:HG23	1:D:239:MET:CE	2.50	0.42
1:A:319:GLN:O	1:A:322:GLU:HB2	2.21	0.41
1:C:183:GLU:HA	1:C:186:GLN:HE21	1.84	0.41
1:C:50:GLU:HG3	4:C:530:HOH:O	2.19	0.41
1:B:138:THR:CA	1:B:142:LYS:O	2.68	0.41
1:A:236:ALA:HA	1:A:239:MET:HE2	2.01	0.41
4:A:680:HOH:O	1:B:222:LYS:NZ	2.35	0.41
1:C:119:LYS:HD3	1:C:119:LYS:HA	1.85	0.41
1:C:255:ASN:HD22	1:C:317:ARG:HH21	1.69	0.41
1:B:219:ARG:HH12	1:D:125:ILE:HA	1.82	0.41
1:C:278:LEU:HD21	1:C:309:LEU:HB2	2.03	0.41
1:D:132:LEU:CD1	1:D:162:ALA:HB3	2.51	0.41
1:C:131:LYS:NZ	4:C:651:HOH:O	2.52	0.41
1:C:17:LEU:HB3	1:D:21:MET:CE	2.51	0.41
1:C:283:GLY:O	1:C:287:ALA:HB2	2.20	0.41
1:A:262:GLN:HA	1:A:262:GLN:OE1	2.21	0.41
1:C:175:VAL:HG21	1:C:249:LEU:HB2	2.02	0.41
1:C:236:ALA:HA	1:C:239:MET:HE1	2.03	0.41
1:C:245:ASN:ND2	1:C:245:ASN:N	2.68	0.41
1:D:269:ASP:OD2	1:D:281:ARG:NH1	2.50	0.41
1:D:278:LEU:HD12	1:D:278:LEU:O	2.20	0.41
1:D:279:PHE:N	1:D:279:PHE:CD1	2.89	0.41
1:A:201:THR:HA	1:A:202:PRO:HD3	1.91	0.41
1:A:233:ILE:HG23	1:A:234:LEU:N	2.35	0.41
1:B:271:MET:O	1:B:272:ARG:HB3	2.21	0.41
1:C:1:MET:HB2	1:C:298:ASN:O	2.21	0.41
1:C:5:ARG:HG2	1:C:302:ASN:ND2	2.35	0.41
1:A:199:LEU:HD23	1:A:199:LEU:HA	1.85	0.41
1:A:203:VAL:HG22	1:A:234:LEU:HD13	2.00	0.41
1:A:197:LLP:H4'1	3:A:402[A]:SER:N	2.36	0.41
1:C:23:ALA:HA	1:C:24:PRO:HD3	1.74	0.41
1:B:115:LYS:CB	1:B:115:LYS:NZ	2.83	0.41
1:B:154:GLU:HB2	4:B:660:HOH:O	2.21	0.41
1:B:290:LEU:HA	1:B:330:PHE:CE1	2.56	0.41
1:B:297:ARG:HD3	1:B:326:HIS:CD2	2.55	0.41
1:C:71:GLU:HG2	4:C:651:HOH:O	2.20	0.41
1:D:203:VAL:CG1	1:D:204:GLY:N	2.83	0.41
1:D:33:ASP:OD1	1:D:36:VAL:HG23	2.21	0.41
1:B:146:ARG:O	1:B:149:LEU:HB2	2.21	0.40

*Continued on next page...*

Continued from previous page...

Atom-1	Atom-2	Interatomic distance (Å)	Clash overlap (Å)
1:C:145:PRO:O	1:C:148:TYR:HB3	2.21	0.40
1:C:166:ASP:HA	1:C:192:THR:HG22	2.02	0.40
1:C:277:MET:SD	1:C:308:ARG:HD2	2.61	0.40
1:C:318:ALA:O	1:C:321:ALA:HB3	2.21	0.40
1:A:139:HIS:HE1	4:A:601:HOH:O	2.03	0.40
1:B:196:SER:HA	1:B:201:THR:O	2.21	0.40
1:B:75:GLU:HA	1:B:99:GLN:O	2.22	0.40
1:C:75:GLU:HA	1:C:99:GLN:O	2.21	0.40
1:D:165:VAL:O	1:D:191:PHE:HA	2.21	0.40
1:A:245:ASN:HB3	4:A:512:HOH:O	2.20	0.40
1:C:167:GLY:N	1:C:192:THR:CG2	2.77	0.40
1:C:263:LEU:HA	1:C:263:LEU:HD23	1.84	0.40
1:D:47:SER:CB	1:D:185:THR:HG21	2.51	0.40
1:B:186:GLN:C	4:B:548:HOH:O	2.59	0.40
1:B:90:GLY:O	1:B:94:VAL:HG23	2.21	0.40
1:C:78:VAL:CG2	1:C:79:GLY:N	2.84	0.40
1:C:201:THR:HG23	1:C:203:VAL:H	1.87	0.40
1:D:75:GLU:OE1	1:D:121:LYS:NZ	2.54	0.40

There are no symmetry-related clashes.

## 5.3 Torsion angles [i](#)

### 5.3.1 Protein backbone [i](#)

In the following table, the Percentiles column shows the percent Ramachandran outliers of the chain as a percentile score with respect to all X-ray entries followed by that with respect to entries of similar resolution.

The Analysed column shows the number of residues for which the backbone conformation was analysed, and the total number of residues.

Mol	Chain	Analysed	Favoured	Allowed	Outliers	Percentiles	
1	A	329/333 (99%)	318 (97%)	10 (3%)	1 (0%)	41	41
1	B	329/333 (99%)	310 (94%)	17 (5%)	2 (1%)	25	21
1	C	329/333 (99%)	316 (96%)	11 (3%)	2 (1%)	25	21
1	D	329/333 (99%)	313 (95%)	15 (5%)	1 (0%)	41	41
All	All	1316/1332 (99%)	1257 (96%)	53 (4%)	6 (0%)	29	26

All (6) Ramachandran outliers are listed below:

Mol	Chain	Res	Type
1	B	138	THR
1	A	138	THR
1	C	138	THR
1	D	138	THR
1	B	293	TYR
1	C	229	ARG

### 5.3.2 Protein sidechains [i](#)

In the following table, the Percentiles column shows the percent sidechain outliers of the chain as a percentile score with respect to all X-ray entries followed by that with respect to entries of similar resolution.

The Analysed column shows the number of residues for which the sidechain conformation was analysed, and the total number of residues.

Mol	Chain	Analysed	Rotameric	Outliers	Percentiles	
1	A	259/260 (100%)	254 (98%)	5 (2%)	57	63
1	B	259/260 (100%)	253 (98%)	6 (2%)	50	55
1	C	259/260 (100%)	245 (95%)	14 (5%)	22	20
1	D	259/260 (100%)	255 (98%)	4 (2%)	65	71
All	All	1036/1040 (100%)	1007 (97%)	29 (3%)	42	47

All (29) residues with a non-rotameric sidechain are listed below:

Mol	Chain	Res	Type
1	A	76	TYR
1	A	114	ASP
1	A	137	ASN
1	A	138	THR
1	A	259	MET
1	B	144	LEU
1	B	201	THR
1	B	203	VAL
1	B	205	SER
1	B	219	ARG
1	B	256	THR
1	C	76	TYR
1	C	99	GLN
1	C	137	ASN
1	C	138	THR
1	C	144	LEU

*Continued on next page...*

*Continued from previous page...*

<b>Mol</b>	<b>Chain</b>	<b>Res</b>	<b>Type</b>
1	C	157	ARG
1	C	159	ARG
1	C	201	THR
1	C	203	VAL
1	C	230	GLN
1	C	239	MET
1	C	248	ARG
1	C	273	GLN
1	C	297	ARG
1	D	67	LEU
1	D	137	ASN
1	D	138	THR
1	D	273	GLN

Some sidechains can be flipped to improve hydrogen bonding and reduce clashes. All (48) such sidechains are listed below:

<b>Mol</b>	<b>Chain</b>	<b>Res</b>	<b>Type</b>
1	A	37	ASN
1	A	60	GLN
1	A	62	ASN
1	A	137	ASN
1	A	139	HIS
1	A	164	HIS
1	A	210	ASN
1	A	230	GLN
1	A	245	ASN
1	A	302	ASN
1	B	60	GLN
1	B	139	HIS
1	B	164	HIS
1	B	172	ASN
1	B	230	GLN
1	B	245	ASN
1	B	250	GLN
1	B	273	GLN
1	B	302	ASN
1	B	326	HIS
1	C	60	GLN
1	C	99	GLN
1	C	137	ASN
1	C	164	HIS
1	C	172	ASN

*Continued on next page...*

*Continued from previous page...*

Mol	Chain	Res	Type
1	C	186	GLN
1	C	230	GLN
1	C	245	ASN
1	C	250	GLN
1	C	255	ASN
1	C	273	GLN
1	C	298	ASN
1	C	302	ASN
1	C	326	HIS
1	D	37	ASN
1	D	60	GLN
1	D	69	HIS
1	D	137	ASN
1	D	139	HIS
1	D	164	HIS
1	D	172	ASN
1	D	210	ASN
1	D	230	GLN
1	D	245	ASN
1	D	250	GLN
1	D	262	GLN
1	D	286	ASN
1	D	302	ASN

### 5.3.3 RNA [i](#)

There are no RNA molecules in this entry.

## 5.4 Non-standard residues in protein, DNA, RNA chains [i](#)

4 non-standard protein/DNA/RNA residues are modelled in this entry.

In the following table, the Counts columns list the number of bonds (or angles) for which Mogul statistics could be retrieved, the number of bonds (or angles) that are observed in the model and the number of bonds (or angles) that are defined in the Chemical Component Dictionary. The Link column lists molecule types, if any, to which the group is linked. The Z score for a bond length (or angle) is the number of standard deviations the observed value is removed from the expected value. A bond length (or angle) with  $|Z| > 2$  is considered an outlier worth inspection. RMSZ is the root-mean-square of all Z scores of the bond lengths (or angles).

Mol	Type	Chain	Res	Link	Bond lengths			Bond angles		
					Counts	RMSZ	# Z  > 2	Counts	RMSZ	# Z  > 2
1	LLP	C	197	1	23,24,25	4.10	9 (39%)	25,32,34	2.43	9 (36%)
1	LLP	D	197	1	23,24,25	3.96	7 (30%)	25,32,34	2.63	11 (44%)
1	LLP	A	197	1	23,24,25	4.10	7 (30%)	25,32,34	2.56	10 (40%)
1	LLP	B	197	1	23,24,25	3.95	9 (39%)	25,32,34	2.58	10 (40%)

In the following table, the Chirals column lists the number of chiral outliers, the number of chiral centers analysed, the number of these observed in the model and the number defined in the Chemical Component Dictionary. Similar counts are reported in the Torsion and Rings columns. '-' means no outliers of that kind were identified.

Mol	Type	Chain	Res	Link	Chirals	Torsions	Rings
1	LLP	C	197	1	-	10/16/17/19	0/1/1/1
1	LLP	D	197	1	-	7/16/17/19	0/1/1/1
1	LLP	A	197	1	-	4/16/17/19	0/1/1/1
1	LLP	B	197	1	-	9/16/17/19	0/1/1/1

All (32) bond length outliers are listed below:

Mol	Chain	Res	Type	Atoms	Z	Observed(Å)	Ideal(Å)
1	C	197	LLP	C4-C5	15.06	1.60	1.42
1	A	197	LLP	C4-C5	14.91	1.60	1.42
1	D	197	LLP	C4-C5	14.52	1.60	1.42
1	B	197	LLP	C4-C5	14.09	1.59	1.42
1	A	197	LLP	C3-C2	8.41	1.49	1.40
1	C	197	LLP	C3-C2	8.36	1.49	1.40
1	B	197	LLP	C3-C2	8.24	1.49	1.40
1	D	197	LLP	C3-C2	7.96	1.48	1.40
1	C	197	LLP	C2-N1	4.96	1.43	1.33
1	A	197	LLP	C2-N1	4.91	1.43	1.33
1	D	197	LLP	C2-N1	4.67	1.42	1.33
1	B	197	LLP	C2-N1	4.65	1.42	1.33
1	C	197	LLP	C6-N1	4.27	1.43	1.34
1	B	197	LLP	C4-C3	3.91	1.46	1.40
1	A	197	LLP	C4'-NZ	3.87	1.40	1.27
1	B	197	LLP	C6-N1	3.85	1.42	1.34
1	D	197	LLP	C6-N1	3.75	1.42	1.34
1	A	197	LLP	C6-N1	3.61	1.42	1.34
1	D	197	LLP	C4-C3	3.57	1.46	1.40

*Continued on next page...*

*Continued from previous page...*

Mol	Chain	Res	Type	Atoms	Z	Observed(Å)	Ideal(Å)
1	D	197	LLP	C4'-NZ	3.52	1.39	1.27
1	A	197	LLP	C4-C3	3.50	1.46	1.40
1	C	197	LLP	C4'-NZ	3.30	1.38	1.27
1	B	197	LLP	C4'-NZ	2.92	1.37	1.27
1	C	197	LLP	C4-C3	2.55	1.44	1.40
1	B	197	LLP	C6-C5	2.44	1.42	1.37
1	C	197	LLP	P-OP3	-2.41	1.45	1.54
1	B	197	LLP	C5'-C5	2.38	1.57	1.50
1	C	197	LLP	C5'-C5	2.20	1.56	1.50
1	D	197	LLP	P-OP3	-2.12	1.46	1.54
1	B	197	LLP	P-OP4	2.06	1.66	1.60
1	C	197	LLP	C6-C5	2.05	1.42	1.37
1	A	197	LLP	OP4-C5'	-2.05	1.37	1.45

All (40) bond angle outliers are listed below:

Mol	Chain	Res	Type	Atoms	Z	Observed(°)	Ideal(°)
1	A	197	LLP	C2'-C2-C3	8.03	130.81	120.89
1	D	197	LLP	C2'-C2-C3	7.65	130.34	120.89
1	B	197	LLP	C2'-C2-C3	7.51	130.17	120.89
1	C	197	LLP	C2'-C2-C3	7.42	130.05	120.89
1	B	197	LLP	OP4-C5'-C5	5.15	119.17	109.35
1	D	197	LLP	OP4-C5'-C5	4.64	118.20	109.35
1	D	197	LLP	C6-N1-C2	4.31	127.14	119.17
1	A	197	LLP	C6-N1-C2	4.25	127.05	119.17
1	B	197	LLP	C6-N1-C2	4.10	126.77	119.17
1	C	197	LLP	C6-N1-C2	4.07	126.70	119.17
1	A	197	LLP	OP4-C5'-C5	3.85	116.69	109.35
1	C	197	LLP	OP4-C5'-C5	3.63	116.27	109.35
1	A	197	LLP	C5-C4-C4'	3.57	127.44	121.56
1	C	197	LLP	C5-C4-C4'	3.45	127.23	121.56
1	D	197	LLP	C5-C4-C4'	3.45	127.23	121.56
1	B	197	LLP	C5-C4-C4'	3.19	126.80	121.56
1	C	197	LLP	C5-C6-N1	-3.15	118.58	123.82
1	C	197	LLP	C3-C4-C4'	-3.12	114.60	120.41
1	A	197	LLP	C3-C2-N1	-3.10	116.76	120.77
1	B	197	LLP	C3-C2-N1	-3.06	116.82	120.77
1	D	197	LLP	C3-C2-N1	-3.00	116.89	120.77
1	D	197	LLP	C5-C6-N1	-3.00	118.82	123.82
1	A	197	LLP	C3-C4-C4'	-2.88	115.04	120.41
1	D	197	LLP	C3-C4-C4'	-2.86	115.08	120.41
1	A	197	LLP	C5-C6-N1	-2.85	119.08	123.82

*Continued on next page...*



*Continued from previous page...*

Mol	Chain	Res	Type	Atoms	Z	Observed(°)	Ideal(°)
1	C	197	LLP	C3-C2-N1	-2.80	117.15	120.77
1	A	197	LLP	C2'-C2-N1	-2.69	112.42	117.67
1	B	197	LLP	C3-C4-C4'	-2.67	115.44	120.41
1	B	197	LLP	C5-C6-N1	-2.66	119.39	123.82
1	B	197	LLP	O3-C3-C4	2.61	126.61	119.60
1	D	197	LLP	O3-C3-C4	2.60	126.58	119.60
1	A	197	LLP	O3-C3-C4	2.52	126.37	119.60
1	D	197	LLP	C2'-C2-N1	-2.51	112.77	117.67
1	C	197	LLP	C2'-C2-N1	-2.50	112.80	117.67
1	D	197	LLP	C4-C4'-NZ	-2.44	113.12	124.31
1	B	197	LLP	C2'-C2-N1	-2.38	113.02	117.67
1	C	197	LLP	O3-C3-C4	2.38	125.98	119.60
1	B	197	LLP	O3-C3-C2	-2.33	112.42	117.49
1	D	197	LLP	O3-C3-C2	-2.18	112.75	117.49
1	A	197	LLP	O3-C3-C2	-2.02	113.08	117.49

There are no chirality outliers.

All (30) torsion outliers are listed below:

Mol	Chain	Res	Type	Atoms
1	C	197	LLP	C4-C4'-NZ-CE
1	C	197	LLP	C4-C5-C5'-OP4
1	C	197	LLP	C6-C5-C5'-OP4
1	C	197	LLP	C5'-OP4-P-OP1
1	C	197	LLP	C5'-OP4-P-OP2
1	C	197	LLP	C5'-OP4-P-OP3
1	C	197	LLP	O-C-CA-CB
1	D	197	LLP	C4-C4'-NZ-CE
1	D	197	LLP	C4-C5-C5'-OP4
1	D	197	LLP	C6-C5-C5'-OP4
1	D	197	LLP	O-C-CA-CB
1	A	197	LLP	C4-C4'-NZ-CE
1	A	197	LLP	O-C-CA-CB
1	B	197	LLP	C4-C4'-NZ-CE
1	B	197	LLP	C4-C5-C5'-OP4
1	B	197	LLP	C6-C5-C5'-OP4
1	B	197	LLP	C5'-OP4-P-OP2
1	B	197	LLP	C5'-OP4-P-OP3
1	B	197	LLP	O-C-CA-CB
1	C	197	LLP	C3-C4-C4'-NZ
1	A	197	LLP	C3-C4-C4'-NZ
1	B	197	LLP	C5'-OP4-P-OP1

*Continued on next page...*

*Continued from previous page...*

Mol	Chain	Res	Type	Atoms
1	C	197	LLP	CG-CD-CE-NZ
1	D	197	LLP	CD-CE-NZ-C4'
1	A	197	LLP	CG-CD-CE-NZ
1	B	197	LLP	C3-C4-C4'-NZ
1	D	197	LLP	C3-C4-C4'-NZ
1	C	197	LLP	CD-CE-NZ-C4'
1	D	197	LLP	C5'-OP4-P-OP2
1	B	197	LLP	CD-CE-NZ-C4'

There are no ring outliers.

3 monomers are involved in 8 short contacts:

Mol	Chain	Res	Type	Clashes	Symm-Clashes
1	C	197	LLP	4	0
1	A	197	LLP	2	0
1	B	197	LLP	2	0

## 5.5 Carbohydrates [i](#)

There are no carbohydrates in this entry.

## 5.6 Ligand geometry [i](#)

Of 14 ligands modelled in this entry, 6 are monoatomic - leaving 8 for Mogul analysis.

There are no bond length outliers.

There are no bond angle outliers.

There are no chirality outliers.

There are no torsion outliers.

There are no ring outliers.

No monomer is involved in short contacts.

## 5.7 Other polymers [i](#)

There are no such residues in this entry.

## 5.8 Polymer linkage issues

There are no chain breaks in this entry.

## 6 Fit of model and data [i](#)

### 6.1 Protein, DNA and RNA chains [i](#)

In the following table, the column labelled ‘#RSRZ> 2’ contains the number (and percentage) of RSRZ outliers, followed by percent RSRZ outliers for the chain as percentile scores relative to all X-ray entries and entries of similar resolution. The OWAB column contains the minimum, median, 95<sup>th</sup> percentile and maximum values of the occupancy-weighted average B-factor per residue. The column labelled ‘Q< 0.9’ lists the number of (and percentage) of residues with an average occupancy less than 0.9.

Mol	Chain	Analysed	<RSRZ>	#RSRZ>2	OWAB(Å <sup>2</sup> )	Q<0.9
1	A	331/333 (99%)	-0.61	0 100 100	12, 23, 37, 52	0
1	B	331/333 (99%)	-0.53	0 100 100	14, 26, 46, 59	0
1	C	331/333 (99%)	-0.51	0 100 100	12, 27, 42, 58	0
1	D	331/333 (99%)	-0.58	0 100 100	12, 24, 39, 58	0
All	All	1324/1332 (99%)	-0.56	0 100 100	12, 25, 42, 59	0

There are no RSRZ outliers to report.

### 6.2 Non-standard residues in protein, DNA, RNA chains [i](#)

In the following table, the Atoms column lists the number of modelled atoms in the group and the number defined in the chemical component dictionary. The B-factors column lists the minimum, median, 95<sup>th</sup> percentile and maximum values of B factors of atoms in the group. The column labelled ‘Q< 0.9’ lists the number of atoms with occupancy less than 0.9.

Mol	Type	Chain	Res	Atoms	RSCC	RSR	B-factors(Å <sup>2</sup> )	Q<0.9
1	LLP	D	197	24/25	0.97	0.09	14,27,31,36	0
1	LLP	B	197	24/25	0.97	0.10	18,30,35,36	0
1	LLP	A	197	24/25	0.98	0.09	16,21,33,34	0
1	LLP	C	197	24/25	0.98	0.10	16,25,33,38	0

### 6.3 Carbohydrates [i](#)

There are no carbohydrates in this entry.

## 6.4 Ligands [i](#)

In the following table, the Atoms column lists the number of modelled atoms in the group and the number defined in the chemical component dictionary. The B-factors column lists the minimum, median, 95<sup>th</sup> percentile and maximum values of B factors of atoms in the group. The column labelled 'Q< 0.9' lists the number of atoms with occupancy less than 0.9.

Mol	Type	Chain	Res	Atoms	RSCC	RSR	B-factors(Å <sup>2</sup> )	Q<0.9
3	SER	C	402[A]	7/7	0.86	0.18	37,42,46,46	7
3	SER	C	402[B]	7/7	0.86	0.18	29,33,36,37	7
3	SER	D	403[B]	7/7	0.91	0.15	19,24,30,31	7
3	SER	D	403[A]	7/7	0.91	0.15	22,32,35,37	7
3	SER	B	403[A]	7/7	0.92	0.12	30,39,44,44	7
3	SER	B	403[B]	7/7	0.92	0.12	25,32,37,38	7
3	SER	A	402[A]	7/7	0.93	0.15	16,24,32,33	7
3	SER	A	402[B]	7/7	0.93	0.15	14,18,23,25	7
2	NA	B	402	1/1	0.98	0.10	19,19,19,19	0
2	NA	D	401	1/1	0.98	0.17	22,22,22,22	0
2	NA	C	401	1/1	0.98	0.12	23,23,23,23	0
2	NA	A	401	1/1	0.99	0.08	23,23,23,23	0
2	NA	D	402	1/1	0.99	0.10	28,28,28,28	0
2	NA	B	401	1/1	1.00	0.15	14,14,14,14	0

## 6.5 Other polymers [i](#)

There are no such residues in this entry.