



Full wwPDB X-ray Structure Validation Report ⓘ

May 26, 2020 – 06:32 am BST

PDB ID : 6R85
Title : Structure of Arabidopsis thaliana GLR3.3 ligand-binding domain in complex with L-glutamate
Authors : Alfieri, A.; Pederzoli, R.; Costa, A.
Deposited on : 2019-03-31
Resolution : 2.00 Å(reported)

This is a Full wwPDB X-ray Structure Validation Report for a publicly released PDB entry.

We welcome your comments at validation@mail.wwpdb.org

A user guide is available at

<https://www.wwpdb.org/validation/2017/XrayValidationReportHelp>

with specific help available everywhere you see the ⓘ symbol.

The following versions of software and data (see [references ⓘ](#)) were used in the production of this report:

MolProbity : 4.02b-467
Mogul : 1.8.5 (274361), CSD as541be (2020)
Xtriage (Phenix) : 1.13
EDS : 2.11
Percentile statistics : 20191225.v01 (using entries in the PDB archive December 25th 2019)
Refmac : 5.8.0158
CCP4 : 7.0.044 (Gargrove)
Ideal geometry (proteins) : Engh & Huber (2001)
Ideal geometry (DNA, RNA) : Parkinson et al. (1996)
Validation Pipeline (wwPDB-VP) : 2.11

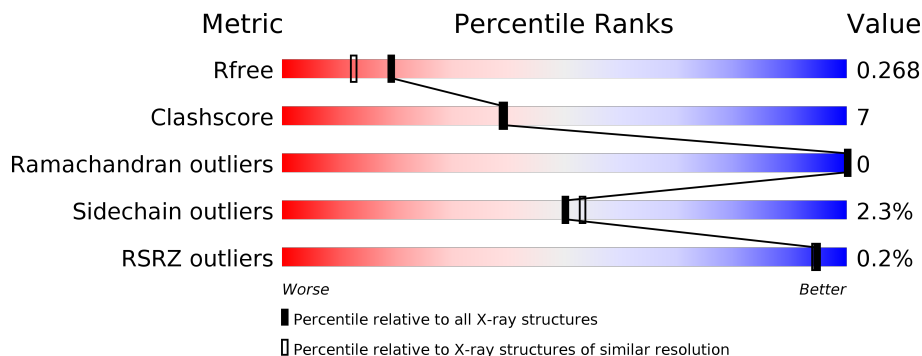
1 Overall quality at a glance

The following experimental techniques were used to determine the structure:

X-RAY DIFFRACTION

The reported resolution of this entry is 2.00 Å.

Percentile scores (ranging between 0-100) for global validation metrics of the entry are shown in the following graphic. The table shows the number of entries on which the scores are based.



Metric	Whole archive (#Entries)	Similar resolution (#Entries, resolution range(Å))
R_{free}	130704	8085 (2.00-2.00)
Clashscore	141614	9178 (2.00-2.00)
Ramachandran outliers	138981	9054 (2.00-2.00)
Sidechain outliers	138945	9053 (2.00-2.00)
RSRZ outliers	127900	7900 (2.00-2.00)

The table below summarises the geometric issues observed across the polymeric chains and their fit to the electron density. The red, orange, yellow and green segments on the lower bar indicate the fraction of residues that contain outliers for ≥ 3 , 2, 1 and 0 types of geometric quality criteria respectively. A grey segment represents the fraction of residues that are not modelled. The numeric value for each fraction is indicated below the corresponding segment, with a dot representing fractions $\leq 5\%$. The upper red bar (where present) indicates the fraction of residues that have poor fit to the electron density. The numeric value is given above the bar.

Mol	Chain	Length	Quality of chain
1	A	247	 81% 15% .
1	B	247	 80% 15% . .

2 Entry composition

There are 6 unique types of molecules in this entry. The entry contains 4054 atoms, of which 0 are hydrogens and 0 are deuteriums.

In the tables below, the ZeroOcc column contains the number of atoms modelled with zero occupancy, the AltConf column contains the number of residues with at least one atom in alternate conformation and the Trace column contains the number of residues modelled with at most 2 atoms.

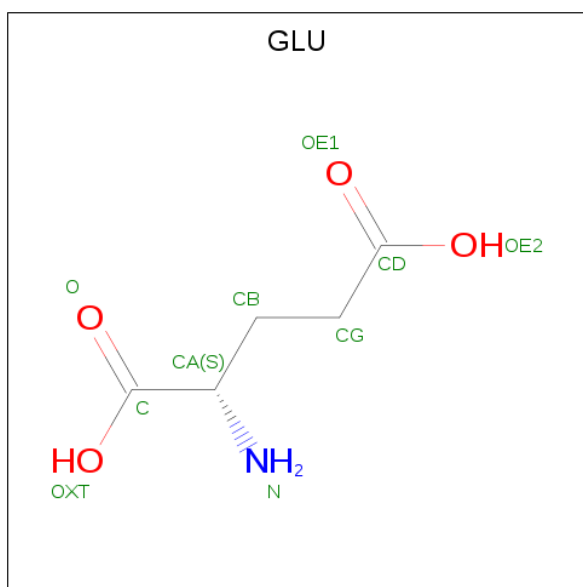
- Molecule 1 is a protein called Glutamate receptor 3.3, Glutamate receptor 3.3.

Mol	Chain	Residues	Atoms					ZeroOcc	AltConf	Trace
			Total	C	N	O	S			
1	A	238	1835	1178	304	346	7	0	0	0
1	B	239	1844	1184	306	347	7	0	0	0

There are 12 discrepancies between the modelled and reference sequences:

Chain	Residue	Modelled	Actual	Comment	Reference
A	-2	GLY	-	expression tag	UNP Q9C8E7
A	-1	PRO	-	expression tag	UNP Q9C8E7
A	0	MET	-	expression tag	UNP Q9C8E7
A	109	GLY	-	linker	UNP Q9C8E7
A	110	GLY	-	linker	UNP Q9C8E7
A	111	THR	-	linker	UNP Q9C8E7
B	-2	GLY	-	expression tag	UNP Q9C8E7
B	-1	PRO	-	expression tag	UNP Q9C8E7
B	0	MET	-	expression tag	UNP Q9C8E7
B	109	GLY	-	linker	UNP Q9C8E7
B	110	GLY	-	linker	UNP Q9C8E7
B	111	THR	-	linker	UNP Q9C8E7

- Molecule 2 is GLUTAMIC ACID (three-letter code: GLU) (formula: C₅H₉NO₄).



Mol	Chain	Residues	Atoms				ZeroOcc	AltConf
			Total	C	N	O		
2	A	1	10	5	1	4	0	0
2	B	1	10	5	1	4	0	0

- Molecule 3 is SULFATE ION (three-letter code: SO4) (formula: O₄S).

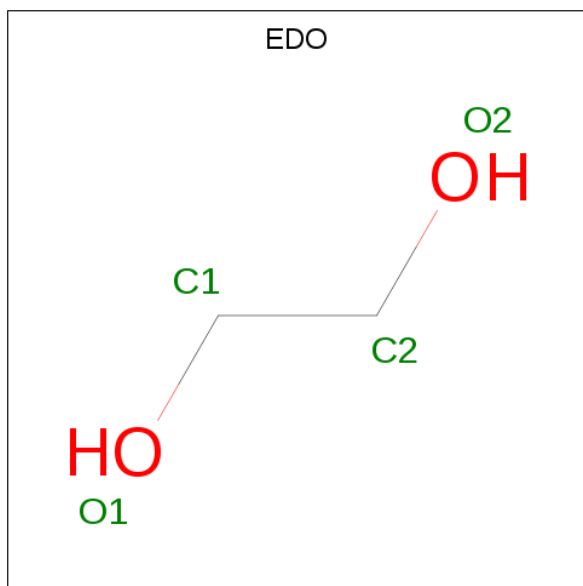


Mol	Chain	Residues	Atoms			ZeroOcc	AltConf
			Total	O	S		
3	A	1	5	4	1	0	0
3	B	1	5	4	1	0	0

- Molecule 4 is SODIUM ION (three-letter code: NA) (formula: Na).

Mol	Chain	Residues	Atoms	ZeroOcc	AltConf
4	A	2	Total Na 2 2	0	0

- Molecule 5 is 1,2-ETHANEDIOL (three-letter code: EDO) (formula: C₂H₆O₂).



Mol	Chain	Residues	Atoms	ZeroOcc	AltConf
5	A	1	Total C O 4 2 2	0	0
5	A	1	Total C O 4 2 2	0	0
5	A	1	Total C O 4 2 2	0	0
5	A	1	Total C O 4 2 2	0	0
5	B	1	Total C O 4 2 2	0	0
5	B	1	Total C O 4 2 2	0	0
5	B	1	Total C O 4 2 2	0	0

- Molecule 6 is water.

Mol	Chain	Residues	Atoms	ZeroOcc	AltConf
6	A	154	Total O 154 154	0	0

Continued on next page...

Continued from previous page...

Mol	Chain	Residues	Atoms		ZeroOcc	AltConf
6	B	161	Total 161	O 161	0	0

4 Data and refinement statistics

Property	Value	Source
Space group	P 1	Depositor
Cell constants a, b, c, α , β , γ	35.89Å 61.28Å 64.10Å 75.19° 75.53° 90.02°	Depositor
Resolution (Å)	59.00 – 2.00 59.10 – 2.00	Depositor EDS
% Data completeness (in resolution range)	96.7 (59.00-2.00) 96.7 (59.10-2.00)	Depositor EDS
R_{merge}	0.12	Depositor
R_{sym}	(Not available)	Depositor
$\langle I/\sigma(I) \rangle$ ¹	1.52 (at 2.00Å)	Xtrriage
Refinement program	REFMAC 5	Depositor
R, R_{free}	0.207 , 0.262 0.215 , 0.268	Depositor DCC
R_{free} test set	1595 reflections (4.79%)	wwPDB-VP
Wilson B-factor (Å ²)	22.5	Xtrriage
Anisotropy	0.061	Xtrriage
Bulk solvent k_{sol} (e/Å ³), B_{sol} (Å ²)	0.38 , 38.6	EDS
L-test for twinning ²	$\langle L \rangle = 0.47$, $\langle L^2 \rangle = 0.31$	Xtrriage
Estimated twinning fraction	0.197 for h,-k,h-l	Xtrriage
F_o, F_c correlation	0.93	EDS
Total number of atoms	4054	wwPDB-VP
Average B, all atoms (Å ²)	24.0	wwPDB-VP

Xtrriage's analysis on translational NCS is as follows: *The largest off-origin peak in the Patterson function is 12.94% of the height of the origin peak. No significant pseudotranslation is detected.*

¹Intensities estimated from amplitudes.

²Theoretical values of $\langle |L| \rangle$, $\langle L^2 \rangle$ for acentric reflections are 0.5, 0.333 respectively for untwinned datasets, and 0.375, 0.2 for perfectly twinned datasets.

5 Model quality [i](#)

5.1 Standard geometry [i](#)

Bond lengths and bond angles in the following residue types are not validated in this section: NA, SO4, EDO

The Z score for a bond length (or angle) is the number of standard deviations the observed value is removed from the expected value. A bond length (or angle) with $|Z| > 5$ is considered an outlier worth inspection. RMSZ is the root-mean-square of all Z scores of the bond lengths (or angles).

Mol	Chain	Bond lengths		Bond angles	
		RMSZ	# Z >5	RMSZ	# Z >5
1	A	0.71	0/1876	0.82	0/2547
1	B	0.70	0/1885	0.81	0/2558
All	All	0.70	0/3761	0.82	0/5105

There are no bond length outliers.

There are no bond angle outliers.

There are no chirality outliers.

There are no planarity outliers.

5.2 Too-close contacts [i](#)

In the following table, the Non-H and H(model) columns list the number of non-hydrogen atoms and hydrogen atoms in the chain respectively. The H(added) column lists the number of hydrogen atoms added and optimized by MolProbity. The Clashes column lists the number of clashes within the asymmetric unit, whereas Symm-Clashes lists symmetry related clashes.

Mol	Chain	Non-H	H(model)	H(added)	Clashes	Symm-Clashes
1	A	1835	0	1825	28	0
1	B	1844	0	1838	30	0
2	A	10	0	5	1	0
2	B	10	0	5	0	0
3	A	5	0	0	0	0
3	B	5	0	0	1	0
4	A	2	0	0	0	0
5	A	16	0	24	2	0
5	B	12	0	18	3	0
6	A	154	0	0	10	0
6	B	161	0	0	7	0
All	All	4054	0	3715	55	0

The all-atom clashscore is defined as the number of clashes found per 1000 atoms (including hydrogen atoms). The all-atom clashscore for this structure is 7.

All (55) close contacts within the same asymmetric unit are listed below, sorted by their clash magnitude.

Atom-1	Atom-2	Interatomic distance (Å)	Clash overlap (Å)
1:B:207:PHE:HA	6:B:449:HOH:O	1.36	1.21
1:B:77:GLY:HA2	6:B:449:HOH:O	1.57	1.04
1:A:96:GLN:HE22	5:A:307:EDO:H21	1.39	0.87
1:A:53:PRO:HD2	6:A:474:HOH:O	1.94	0.67
1:A:122:ARG:HG2	1:A:124:ASP:H	1.66	0.61
1:B:99:ALA:HA	5:B:304:EDO:H21	1.86	0.56
1:A:50:LYS:HG2	6:A:405:HOH:O	2.04	0.56
1:B:8:VAL:CG1	1:B:18:VAL:HG11	2.37	0.54
1:A:58:LYS:NZ	3:B:302:SO4:O4	2.22	0.53
1:B:15:LYS:HB3	1:B:19:SER:HB3	1.91	0.52
1:B:208:PRO:HD3	6:B:449:HOH:O	2.09	0.52
1:A:69:MET:HB2	1:A:75:PHE:CD2	2.45	0.52
1:A:121:GLU:HB2	6:A:459:HOH:O	2.09	0.52
1:A:26:ASN:ND2	6:A:405:HOH:O	2.43	0.52
1:A:8:VAL:CG1	1:A:18:VAL:HG11	2.41	0.52
1:A:149:LEU:O	1:B:209:ARG:NH2	2.43	0.51
1:A:130:VAL:O	2:A:301:GLU:OE2	2.30	0.50
1:A:52:ILE:HG12	6:A:405:HOH:O	2.11	0.50
1:B:122:ARG:NH1	1:B:124:ASP:OD2	2.45	0.49
1:B:41:ASN:HB3	6:B:425:HOH:O	2.12	0.49
1:B:227:ASN:ND2	1:B:229:ASP:OD2	2.46	0.49
1:A:205:PHE:HA	6:A:436:HOH:O	2.13	0.49
1:A:22:ARG:NH2	5:A:308:EDO:O2	2.38	0.48
1:B:117:GLU:O	1:B:120:ARG:HB3	2.14	0.48
1:A:135:GLU:OE2	1:B:90:LYS:NZ	2.32	0.47
1:B:105:VAL:HB	1:B:194:VAL:HG22	1.96	0.47
1:B:137:TYR:CZ	1:B:141:GLU:HG2	2.50	0.47
1:A:207:PHE:HB3	1:A:208:PRO:HD2	1.97	0.47
1:A:178:ARG:HD2	1:A:197:GLU:OE1	2.15	0.47
1:A:15:LYS:HB3	1:A:19:SER:HB3	1.96	0.46
1:B:200:LYS:HG2	6:B:545:HOH:O	2.16	0.46
1:A:52:ILE:CG1	6:A:405:HOH:O	2.63	0.46
1:A:135:GLU:HB3	6:A:443:HOH:O	2.16	0.46
1:B:97:PRO:HA	1:B:203:TRP:O	2.15	0.46
1:A:230:LEU:HA	1:A:230:LEU:HD12	1.87	0.45
1:A:125:PRO:HA	1:A:148:ARG:O	2.17	0.45
1:A:147:SER:O	1:B:209:ARG:NH1	2.50	0.45

Continued on next page...

Continued from previous page...

Atom-1	Atom-2	Interatomic distance (Å)	Clash overlap (Å)
1:B:212:PRO:O	1:B:215:ILE:HG23	2.16	0.45
1:B:160:LYS:NZ	6:B:407:HOH:O	2.35	0.44
1:B:99:ALA:CA	5:B:304:EDO:H21	2.48	0.44
1:A:31:PHE:O	1:A:35:VAL:HG23	2.19	0.43
1:B:122:ARG:HG2	1:B:124:ASP:H	1.84	0.43
1:B:146:GLU:OE2	6:B:401:HOH:O	2.21	0.43
1:A:59:GLU:HB3	1:A:130:VAL:HG11	2.00	0.43
1:A:239:MET:C	6:A:495:HOH:O	2.56	0.42
1:B:105:VAL:CG1	1:B:194:VAL:HG22	2.50	0.41
1:A:209:ARG:NH1	6:A:416:HOH:O	2.53	0.41
1:B:207:PHE:CE1	1:B:213:LEU:HD13	2.56	0.41
1:B:139:ARG:HD2	1:B:144:ILE:O	2.21	0.41
1:B:116:ILE:HD11	1:B:142:LEU:CD1	2.51	0.41
1:B:59:GLU:HB3	1:B:130:VAL:HG11	2.03	0.41
1:A:137:TYR:CZ	1:A:141:GLU:HG2	2.56	0.41
1:B:234:HIS:HD2	5:B:304:EDO:H22	1.86	0.40
1:B:177:GLU:HB3	1:B:179:PRO:HD2	2.02	0.40
1:B:67:VAL:HG13	1:B:92:VAL:HG11	2.03	0.40

There are no symmetry-related clashes.

5.3 Torsion angles [i](#)

5.3.1 Protein backbone [i](#)

In the following table, the Percentiles column shows the percent Ramachandran outliers of the chain as a percentile score with respect to all X-ray entries followed by that with respect to entries of similar resolution.

The Analysed column shows the number of residues for which the backbone conformation was analysed, and the total number of residues.

Mol	Chain	Analysed	Favoured	Allowed	Outliers	Percentiles	
1	A	235/247 (95%)	226 (96%)	9 (4%)	0	100	100
1	B	236/247 (96%)	230 (98%)	6 (2%)	0	100	100
All	All	471/494 (95%)	456 (97%)	15 (3%)	0	100	100

There are no Ramachandran outliers to report.

5.3.2 Protein sidechains [i](#)

In the following table, the Percentiles column shows the percent sidechain outliers of the chain as a percentile score with respect to all X-ray entries followed by that with respect to entries of similar resolution.

The Analysed column shows the number of residues for which the sidechain conformation was analysed, and the total number of residues.

Mol	Chain	Analysed	Rotameric	Outliers	Percentiles	
1	A	198/204 (97%)	195 (98%)	3 (2%)	65	69
1	B	199/204 (98%)	193 (97%)	6 (3%)	41	41
All	All	397/408 (97%)	388 (98%)	9 (2%)	50	53

All (9) residues with a non-rotameric sidechain are listed below:

Mol	Chain	Res	Type
1	A	65	HIS
1	A	117	GLU
1	A	239	MET
1	B	18	VAL
1	B	27	MET
1	B	67	VAL
1	B	200	LYS
1	B	209	ARG
1	B	213	LEU

Some sidechains can be flipped to improve hydrogen bonding and reduce clashes. All (2) such sidechains are listed below:

Mol	Chain	Res	Type
1	A	26	ASN
1	A	96	GLN

5.3.3 RNA [i](#)

There are no RNA molecules in this entry.

5.4 Non-standard residues in protein, DNA, RNA chains [i](#)

There are no non-standard protein/DNA/RNA residues in this entry.

5.5 Carbohydrates [i](#)

There are no carbohydrates in this entry.

5.6 Ligand geometry [i](#)

Of 13 ligands modelled in this entry, 2 are monoatomic - leaving 11 for Mogul analysis.

In the following table, the Counts columns list the number of bonds (or angles) for which Mogul statistics could be retrieved, the number of bonds (or angles) that are observed in the model and the number of bonds (or angles) that are defined in the Chemical Component Dictionary. The Link column lists molecule types, if any, to which the group is linked. The Z score for a bond length (or angle) is the number of standard deviations the observed value is removed from the expected value. A bond length (or angle) with $|Z| > 2$ is considered an outlier worth inspection. RMSZ is the root-mean-square of all Z scores of the bond lengths (or angles).

Mol	Type	Chain	Res	Link	Bond lengths			Bond angles		
					Counts	RMSZ	$\# Z > 2$	Counts	RMSZ	$\# Z > 2$
3	SO4	A	302	-	4,4,4	0.49	0	6,6,6	0.14	0
5	EDO	B	305	-	3,3,3	0.09	0	2,2,2	0.18	0
5	EDO	B	304	-	3,3,3	0.08	0	2,2,2	0.48	0
5	EDO	B	303	-	3,3,3	0.10	0	2,2,2	0.17	0
3	SO4	B	302	-	4,4,4	0.47	0	6,6,6	0.16	0
5	EDO	A	305	-	3,3,3	0.22	0	2,2,2	0.49	0
5	EDO	A	306	-	3,3,3	0.16	0	2,2,2	0.41	0
5	EDO	A	308	-	3,3,3	0.07	0	2,2,2	0.03	0
5	EDO	A	307	-	3,3,3	0.21	0	2,2,2	0.29	0

In the following table, the Chirals column lists the number of chiral outliers, the number of chiral centers analysed, the number of these observed in the model and the number defined in the Chemical Component Dictionary. Similar counts are reported in the Torsion and Rings columns. '-' means no outliers of that kind were identified.

Mol	Type	Chain	Res	Link	Chirals	Torsions	Rings
5	EDO	B	305	-	-	1/1/1/1	-
5	EDO	B	304	-	-	1/1/1/1	-
5	EDO	B	303	-	-	0/1/1/1	-
5	EDO	A	305	-	-	1/1/1/1	-
5	EDO	A	306	-	-	1/1/1/1	-
5	EDO	A	308	-	-	0/1/1/1	-
5	EDO	A	307	-	-	1/1/1/1	-

There are no bond length outliers.

There are no bond angle outliers.

There are no chirality outliers.

All (5) torsion outliers are listed below:

Mol	Chain	Res	Type	Atoms
5	B	304	EDO	O1-C1-C2-O2
5	A	305	EDO	O1-C1-C2-O2
5	B	305	EDO	O1-C1-C2-O2
5	A	306	EDO	O1-C1-C2-O2
5	A	307	EDO	O1-C1-C2-O2

There are no ring outliers.

4 monomers are involved in 6 short contacts:

Mol	Chain	Res	Type	Clashes	Symm-Clashes
5	B	304	EDO	3	0
3	B	302	SO4	1	0
5	A	308	EDO	1	0
5	A	307	EDO	1	0

5.7 Other polymers [i](#)

There are no such residues in this entry.

5.8 Polymer linkage issues [i](#)

There are no chain breaks in this entry.

6 Fit of model and data [i](#)

6.1 Protein, DNA and RNA chains [i](#)

In the following table, the column labelled '#RSRZ > 2' contains the number (and percentage) of RSRZ outliers, followed by percent RSRZ outliers for the chain as percentile scores relative to all X-ray entries and entries of similar resolution. The OWAB column contains the minimum, median, 95th percentile and maximum values of the occupancy-weighted average B-factor per residue. The column labelled 'Q < 0.9' lists the number of (and percentage) of residues with an average occupancy less than 0.9.

Mol	Chain	Analysed	<RSRZ>	#RSRZ>2	OWAB(Å ²)	Q<0.9
1	A	238/247 (96%)	-0.46	0 100 100	14, 22, 40, 67	0
1	B	239/247 (96%)	-0.48	1 (0%) 92 92	15, 21, 39, 64	0
All	All	477/494 (96%)	-0.47	1 (0%) 95 94	14, 22, 40, 67	0

All (1) RSRZ outliers are listed below:

Mol	Chain	Res	Type	RSRZ
1	B	243	CYS	2.9

6.2 Non-standard residues in protein, DNA, RNA chains [i](#)

There are no non-standard protein/DNA/RNA residues in this entry.

6.3 Carbohydrates [i](#)

There are no carbohydrates in this entry.

6.4 Ligands [i](#)

In the following table, the Atoms column lists the number of modelled atoms in the group and the number defined in the chemical component dictionary. The B-factors column lists the minimum, median, 95th percentile and maximum values of B factors of atoms in the group. The column labelled 'Q < 0.9' lists the number of atoms with occupancy less than 0.9.

Mol	Type	Chain	Res	Atoms	RSCC	RSR	B-factors(Å ²)	Q<0.9
5	EDO	B	303	4/4	0.81	0.13	45,45,46,46	0
5	EDO	A	305	4/4	0.87	0.14	32,36,37,39	0
5	EDO	A	306	4/4	0.90	0.13	27,30,31,31	0
5	EDO	B	304	4/4	0.93	0.16	28,30,30,32	0

Continued on next page...

Continued from previous page...

Mol	Type	Chain	Res	Atoms	RSCC	RSR	B-factors(\AA^2)	Q<0.9
5	EDO	A	307	4/4	0.93	0.11	25,26,26,28	0
5	EDO	A	308	4/4	0.94	0.08	33,35,35,37	0
5	EDO	B	305	4/4	0.94	0.10	28,32,32,33	0
4	NA	A	304	1/1	0.96	0.08	40,40,40,40	0
2	GLU	B	301	10/10	0.97	0.07	12,16,20,21	0
4	NA	A	303	1/1	0.98	0.05	30,30,30,30	0
2	GLU	A	301	10/10	0.98	0.08	15,16,18,18	0
3	SO4	B	302	5/5	0.99	0.09	26,27,31,33	0
3	SO4	A	302	5/5	0.99	0.12	32,35,37,40	0

6.5 Other polymers [i](#)

There are no such residues in this entry.