



Full wwPDB X-ray Structure Validation Report ⓘ

Feb 10, 2024 – 06:59 PM EST

PDB ID : 2R7T
Title : Crystal Structure of Rotavirus SA11 VP1/RNA (UGUGAACC) Complex
Authors : Lu, X.; Harrison, S.C.; Tao, Y.J.; Patton, J.T.; Nibert, M.L.
Deposited on : 2007-09-10
Resolution : 3.00 Å(reported)

This is a Full wwPDB X-ray Structure Validation Report for a publicly released PDB entry.

We welcome your comments at validation@mail.wwpdb.org

A user guide is available at

<https://www.wwpdb.org/validation/2017/XrayValidationReportHelp>

with specific help available everywhere you see the ⓘ symbol.

The types of validation reports are described at

<http://www.wwpdb.org/validation/2017/FAQs#types>.

The following versions of software and data (see [references ⓘ](#)) were used in the production of this report:

MolProbity : 4.02b-467
Xtriage (Phenix) : 1.13
EDS : 2.36
Percentile statistics : 20191225.v01 (using entries in the PDB archive December 25th 2019)
Refmac : 5.8.0158
CCP4 : 7.0.044 (Gargrove)
Ideal geometry (proteins) : Engh & Huber (2001)
Ideal geometry (DNA, RNA) : Parkinson et al. (1996)
Validation Pipeline (wwPDB-VP) : 2.36

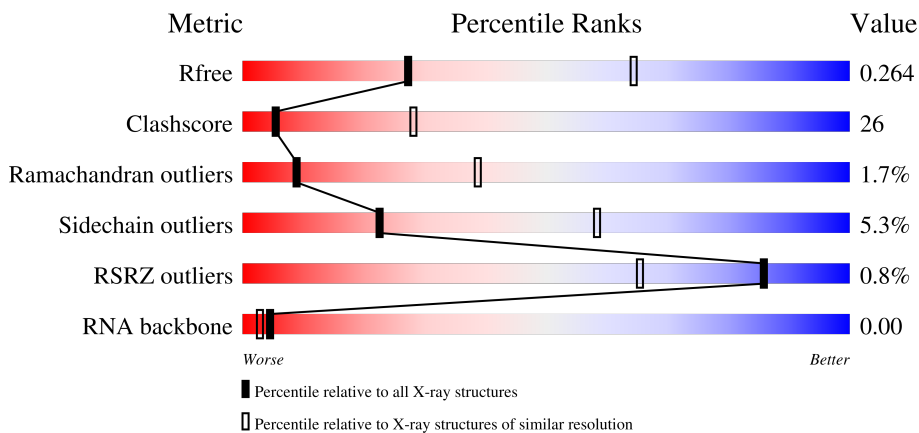
1 Overall quality at a glance

The following experimental techniques were used to determine the structure:

X-RAY DIFFRACTION

The reported resolution of this entry is 3.00 Å.

Percentile scores (ranging between 0-100) for global validation metrics of the entry are shown in the following graphic. The table shows the number of entries on which the scores are based.



Metric	Whole archive (#Entries)	Similar resolution (#Entries, resolution range(Å))
R_{free}	130704	2092 (3.00-3.00)
Clashscore	141614	2416 (3.00-3.00)
Ramachandran outliers	138981	2333 (3.00-3.00)
Sidechain outliers	138945	2336 (3.00-3.00)
RSRZ outliers	127900	1990 (3.00-3.00)
RNA backbone	3102	1173 (3.30-2.70)

The table below summarises the geometric issues observed across the polymeric chains and their fit to the electron density. The red, orange, yellow and green segments of the lower bar indicate the fraction of residues that contain outliers for ≥ 3 , 2, 1 and 0 types of geometric quality criteria respectively. A grey segment represents the fraction of residues that are not modelled. The numeric value for each fraction is indicated below the corresponding segment, with a dot representing fractions $\leq 5\%$. The upper red bar (where present) indicates the fraction of residues that have poor fit to the electron density. The numeric value is given above the bar.

Mol	Chain	Length	Quality of chain
1	X	8	 88% 12%
2	A	1095	 49% 45% . .

2 Entry composition

There are 2 unique types of molecules in this entry. The entry contains 8846 atoms, of which 0 are hydrogens and 0 are deuteriums.

In the tables below, the ZeroOcc column contains the number of atoms modelled with zero occupancy, the AltConf column contains the number of residues with at least one atom in alternate conformation and the Trace column contains the number of residues modelled with at most 2 atoms.

- Molecule 1 is a RNA chain called RNA (5'-R(*UP*GP*UP*GP*AP*AP*CP*C)-3').

Mol	Chain	Residues	Atoms					ZeroOcc	AltConf	Trace
			Total	C	N	O	P			
1	X	7	147	67	27	47	6	0	0	0

- Molecule 2 is a protein called RNA-dependent RNA polymerase.

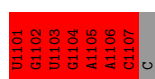
Mol	Chain	Residues	Atoms					ZeroOcc	AltConf	Trace
			Total	C	N	O	S			
2	A	1073	8699	5579	1448	1634	38	0	0	0

3 Residue-property plots [i](#)

These plots are drawn for all protein, RNA, DNA and oligosaccharide chains in the entry. The first graphic for a chain summarises the proportions of the various outlier classes displayed in the second graphic. The second graphic shows the sequence view annotated by issues in geometry and electron density. Residues are color-coded according to the number of geometric quality criteria for which they contain at least one outlier: green = 0, yellow = 1, orange = 2 and red = 3 or more. A red dot above a residue indicates a poor fit to the electron density ($RSRZ > 2$). Stretches of 2 or more consecutive residues without any outlier are shown as a green connector. Residues present in the sample, but not in the model, are shown in grey.

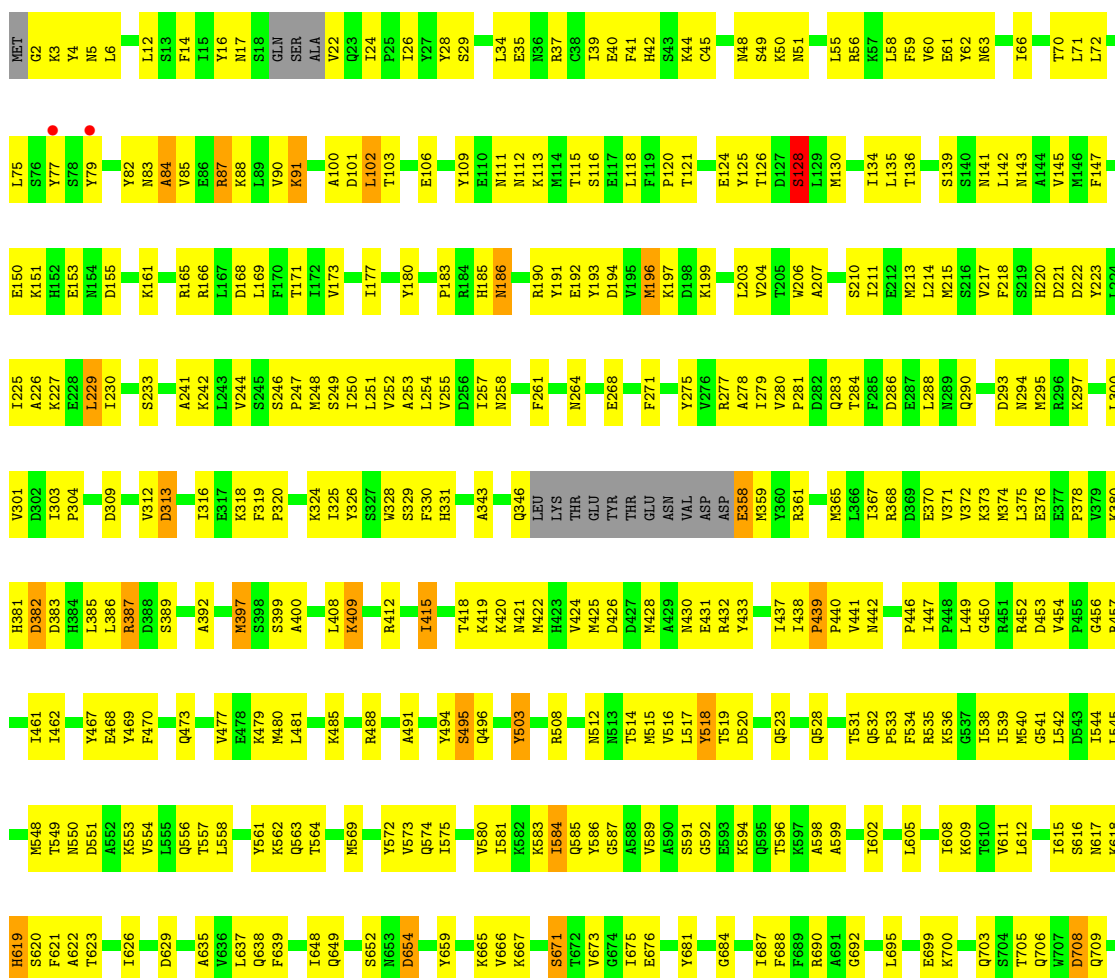
- Molecule 1: RNA (5'-R(*UP*GP*UP*GP*AP*AP*CP*C)-3')

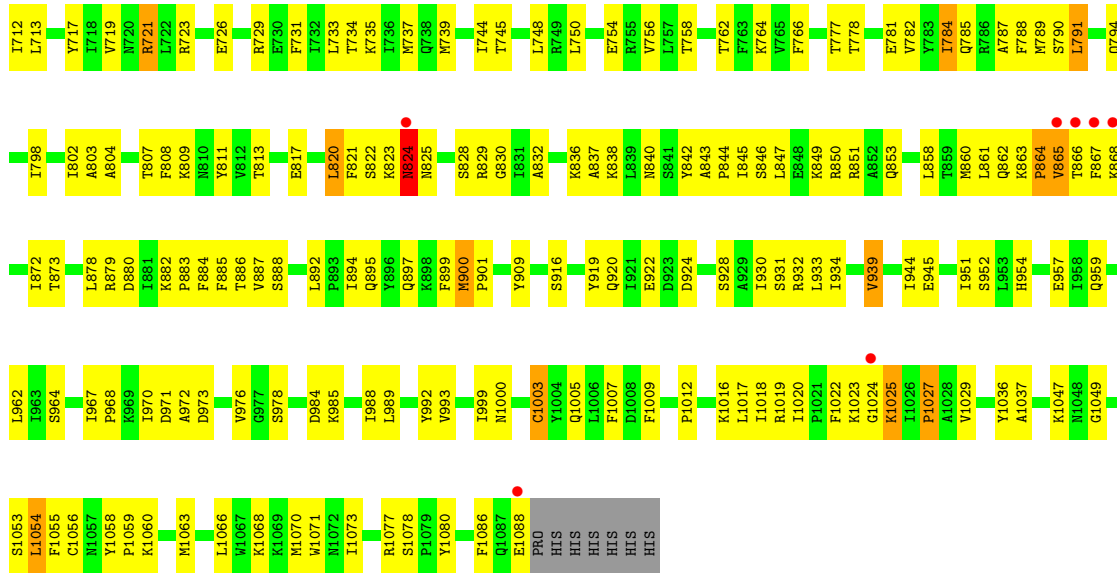
Chain X: 



- Molecule 2: RNA-dependent RNA polymerase

Chain A: 





4 Data and refinement statistics

Property	Value	Source
Space group	P 21 21 21	Depositor
Cell constants a, b, c, α , β , γ	76.65Å 112.53Å 143.58Å 90.00° 90.00° 90.00°	Depositor
Resolution (Å)	30.00 – 3.00 40.60 – 3.00	Depositor EDS
% Data completeness (in resolution range)	87.4 (30.00-3.00) 87.5 (40.60-3.00)	Depositor EDS
R_{merge}	0.08	Depositor
R_{sym}	(Not available)	Depositor
$\langle I/\sigma(I) \rangle$ ¹	2.04 (at 3.01Å)	Xtrriage
Refinement program	CNS	Depositor
R, R_{free}	0.235 , 0.280 0.220 , 0.264	Depositor DCC
R_{free} test set	2025 reflections (7.93%)	wwPDB-VP
Wilson B-factor (Å ²)	56.4	Xtrriage
Anisotropy	0.424	Xtrriage
Bulk solvent k_{sol} (e/Å ³), B_{sol} (Å ²)	0.30 , 38.2	EDS
L-test for twinning ²	$\langle L \rangle = 0.48$, $\langle L^2 \rangle = 0.31$	Xtrriage
Estimated twinning fraction	No twinning to report.	Xtrriage
F_o, F_c correlation	0.92	EDS
Total number of atoms	8846	wwPDB-VP
Average B, all atoms (Å ²)	47.0	wwPDB-VP

Xtrriage's analysis on translational NCS is as follows: *The largest off-origin peak in the Patterson function is 3.63% of the height of the origin peak. No significant pseudotranslation is detected.*

¹Intensities estimated from amplitudes.

²Theoretical values of $\langle |L| \rangle$, $\langle L^2 \rangle$ for acentric reflections are 0.5, 0.333 respectively for untwinned datasets, and 0.375, 0.2 for perfectly twinned datasets.

5 Model quality i

5.1 Standard geometry i

The Z score for a bond length (or angle) is the number of standard deviations the observed value is removed from the expected value. A bond length (or angle) with $|Z| > 5$ is considered an outlier worth inspection. RMSZ is the root-mean-square of all Z scores of the bond lengths (or angles).

Mol	Chain	Bond lengths		Bond angles	
		RMSZ	# Z >5	RMSZ	# Z >5
1	X	0.62	0/164	1.85	12/254 (4.7%)
2	A	0.44	1/8870 (0.0%)	0.61	1/11989 (0.0%)
All	All	0.45	1/9034 (0.0%)	0.66	13/12243 (0.1%)

Chiral center outliers are detected by calculating the chiral volume of a chiral center and verifying if the center is modelled as a planar moiety or with the opposite hand. A planarity outlier is detected by checking planarity of atoms in a peptide group, atoms in a mainchain group or atoms of a sidechain that are expected to be planar.

Mol	Chain	#Chirality outliers	#Planarity outliers
1	X	2	0

All (1) bond length outliers are listed below:

Mol	Chain	Res	Type	Atoms	Z	Observed(Å)	Ideal(Å)
2	A	1003	CYS	CB-SG	-5.61	1.72	1.81

All (13) bond angle outliers are listed below:

Mol	Chain	Res	Type	Atoms	Z	Observed(°)	Ideal(°)
2	A	824	ASN	N-CA-C	10.30	138.82	111.00
1	X	1101	U	C2'-C3'-O3'	8.23	127.60	109.50
1	X	1105	A	C2'-C3'-O3'	7.73	126.51	109.50
1	X	1103	U	C2'-C3'-O3'	7.35	125.67	109.50
1	X	1102	G	C2'-C3'-O3'	7.23	125.42	109.50
1	X	1104	G	C2'-C3'-O3'	7.22	125.38	109.50
1	X	1106	A	C2'-C3'-O3'	7.09	125.10	109.50
1	X	1102	G	C4'-C3'-C2'	6.17	108.77	102.60
1	X	1107	C	C2'-C3'-O3'	5.84	123.05	113.70
1	X	1104	G	C4'-C3'-C2'	5.78	108.38	102.60
1	X	1101	U	C4'-C3'-C2'	5.22	107.82	102.60
1	X	1103	U	C4'-C3'-C2'	5.14	107.74	102.60
1	X	1106	A	N9-C1'-C2'	-5.09	106.40	112.00

All (2) chirality outliers are listed below:

Mol	Chain	Res	Type	Atom
1	X	1105	A	C3'
1	X	1106	A	C3'

There are no planarity outliers.

5.2 Too-close contacts

In the following table, the Non-H and H(model) columns list the number of non-hydrogen atoms and hydrogen atoms in the chain respectively. The H(added) column lists the number of hydrogen atoms added and optimized by MolProbity. The Clashes column lists the number of clashes within the asymmetric unit, whereas Symm-Clashes lists symmetry-related clashes.

Mol	Chain	Non-H	H(model)	H(added)	Clashes	Symm-Clashes
1	X	147	0	77	15	0
2	A	8699	0	8793	456	0
All	All	8846	0	8870	463	0

The all-atom clashscore is defined as the number of clashes found per 1000 atoms (including hydrogen atoms). The all-atom clashscore for this structure is 26.

All (463) close contacts within the same asymmetric unit are listed below, sorted by their clash magnitude.

Atom-1	Atom-2	Interatomic distance (Å)	Clash overlap (Å)
2:A:385:LEU:HD23	2:A:479:LYS:HE2	1.33	1.07
2:A:520:ASP:HB3	2:A:667:LYS:HG2	1.46	0.96
2:A:101:ASP:OD1	2:A:103:THR:HG22	1.67	0.94
2:A:503:TYR:HB2	2:A:687:ILE:HD13	1.49	0.93
2:A:865:VAL:HG22	2:A:866:THR:H	1.31	0.93
2:A:186:ASN:ND2	2:A:190:ARG:H	1.70	0.89
2:A:735:LYS:O	2:A:739:MET:HG3	1.75	0.86
2:A:177:ILE:HD13	2:A:203:LEU:HD11	1.57	0.85
2:A:283:GLN:OE1	2:A:649:GLN:HG3	1.76	0.85
2:A:438:ILE:HD12	2:A:563:GLN:HB3	1.58	0.85
2:A:24:ILE:HB	2:A:75:LEU:HB2	1.61	0.82
2:A:135:LEU:HD22	2:A:709:GLN:HE21	1.43	0.82
2:A:721:ARG:HD2	2:A:726:GLU:HG3	1.61	0.82
2:A:254:LEU:HD23	2:A:280:VAL:HG21	1.63	0.81
2:A:866:THR:HG22	2:A:867:PHE:H	1.45	0.81
2:A:999:ILE:HD11	2:A:1009:PHE:CZ	2.16	0.80

Continued on next page...

Continued from previous page...

Atom-1	Atom-2	Interatomic distance (Å)	Clash overlap (Å)
2:A:3:LYS:HA	2:A:6:LEU:HD23	1.62	0.80
2:A:381:HIS:O	2:A:382:ASP:HB2	1.81	0.80
2:A:186:ASN:HD21	2:A:190:ARG:H	1.29	0.78
2:A:778:THR:O	2:A:782:VAL:HG23	1.83	0.78
2:A:247:PRO:O	2:A:251:LEU:HG	1.83	0.78
2:A:744:ILE:HG22	2:A:745:THR:HG23	1.64	0.77
2:A:226:ALA:O	2:A:230:ILE:HG13	1.85	0.77
2:A:446:PRO:HG2	2:A:583:LYS:HD3	1.67	0.76
2:A:180:TYR:HB3	2:A:199:LYS:HG3	1.67	0.76
2:A:573:VAL:HG12	2:A:575:ILE:HG13	1.67	0.76
2:A:6:LEU:H	2:A:6:LEU:HD22	1.49	0.76
2:A:824:ASN:CG	2:A:828:SER:HB2	2.07	0.75
2:A:972:ALA:O	2:A:976:VAL:HG23	1.88	0.74
2:A:618:LYS:HD2	2:A:654:ASP:OD2	1.88	0.73
2:A:385:LEU:HD23	2:A:479:LYS:CE	2.17	0.72
2:A:608:ILE:HD13	2:A:626:ILE:HG23	1.72	0.72
2:A:886:THR:OG1	2:A:1055:PHE:HB3	1.89	0.72
2:A:681:TYR:CZ	2:A:688:PHE:HB3	2.25	0.71
2:A:309:ASP:O	2:A:312:VAL:HG22	1.90	0.70
2:A:1059:PRO:O	2:A:1063:MET:HG3	1.91	0.70
2:A:928:SER:O	2:A:932:ARG:HG3	1.92	0.70
2:A:346:GLN:HG2	2:A:586:TYR:CE1	2.28	0.69
2:A:520:ASP:CB	2:A:667:LYS:HG2	2.21	0.69
2:A:420:LYS:O	2:A:424:VAL:HG23	1.92	0.69
2:A:882:LYS:HB3	2:A:883:PRO:HD3	1.73	0.69
2:A:295:MET:HE2	2:A:300:LEU:HD13	1.75	0.69
2:A:777:THR:HG21	2:A:882:LYS:HE3	1.73	0.69
2:A:286:ASP:O	2:A:290:GLN:HG3	1.91	0.69
2:A:865:VAL:HG22	2:A:866:THR:N	2.07	0.68
2:A:945:GLU:HG2	2:A:992:TYR:HE1	1.57	0.68
2:A:532:GLN:HG3	2:A:536:LYS:HE3	1.76	0.67
2:A:250:ILE:HG21	2:A:288:LEU:HB2	1.77	0.67
1:X:1105:A:H5'	2:A:400:ALA:HB1	1.77	0.67
2:A:324:LYS:O	2:A:328:TRP:HD1	1.79	0.66
2:A:789:MET:HE1	2:A:873:THR:HG21	1.78	0.66
2:A:358:GLU:OE2	2:A:359:MET:HG2	1.96	0.66
2:A:820:LEU:H	2:A:820:LEU:HD23	1.59	0.66
2:A:575:ILE:HD12	2:A:584:ILE:HG12	1.78	0.65
2:A:85:VAL:HG21	2:A:139:SER:OG	1.97	0.65
2:A:556:GLN:HA	2:A:556:GLN:HE21	1.61	0.65
2:A:50:LYS:HG2	2:A:50:LYS:O	1.97	0.64

Continued on next page...

Continued from previous page...

Atom-1	Atom-2	Interatomic distance (Å)	Clash overlap (Å)
2:A:1023:LYS:O	2:A:1060:LYS:HG2	1.97	0.64
2:A:536:LYS:O	2:A:540:MET:HG3	1.96	0.64
2:A:885:PHE:CE1	2:A:1056:CYS:HB2	2.31	0.64
2:A:804:ALA:HA	2:A:809:LYS:HE3	1.79	0.64
1:X:1105:A:C4	2:A:462:ILE:HG21	2.32	0.64
2:A:843:ALA:HB3	2:A:844:PRO:HD3	1.81	0.63
2:A:387:ARG:HB3	2:A:387:ARG:HH11	1.63	0.63
2:A:206:TRP:HD1	2:A:233:SER:HG	1.47	0.63
2:A:622:ALA:HB3	2:A:638:GLN:HB3	1.80	0.62
1:X:1105:A:N3	2:A:592:GLY:HA2	2.14	0.62
2:A:820:LEU:HB2	2:A:964:SER:O	1.98	0.62
2:A:193:TYR:CE2	2:A:197:LYS:HD2	2.34	0.62
2:A:473:GLN:HG2	2:A:561:TYR:CE1	2.35	0.62
2:A:437:ILE:O	2:A:439:PRO:HD3	2.00	0.61
2:A:367:ILE:O	2:A:371:VAL:HG23	2.00	0.61
2:A:866:THR:HG22	2:A:867:PHE:N	2.16	0.61
2:A:1018:ILE:HD12	2:A:1037:ALA:HB1	1.83	0.60
2:A:591:SER:HB2	2:A:596:THR:CG2	2.32	0.60
2:A:485:LYS:NZ	2:A:495:SER:O	2.35	0.60
2:A:102:LEU:HD22	2:A:102:LEU:H	1.67	0.60
2:A:2:GLY:HA2	2:A:754:GLU:OE2	2.02	0.60
2:A:29:SER:OG	2:A:34:LEU:HD23	2.02	0.60
2:A:1024:GLY:O	2:A:1025:LYS:HB2	2.01	0.60
2:A:242:LYS:O	2:A:246:SER:HB2	2.02	0.60
2:A:516:VAL:HG21	2:A:675:ILE:CG2	2.32	0.59
2:A:544:ILE:O	2:A:548:MET:HG3	2.01	0.59
2:A:681:TYR:CZ	2:A:688:PHE:CB	2.85	0.59
2:A:744:ILE:HB	2:A:748:LEU:HD22	1.83	0.59
2:A:687:ILE:HG22	2:A:899:PHE:O	2.03	0.59
2:A:733:LEU:O	2:A:737:MET:HE3	2.03	0.59
2:A:397:MET:HA	2:A:470:PHE:HE2	1.67	0.59
1:X:1106:A:H5''	1:X:1107:C:OP2	2.03	0.59
2:A:551:ASP:HB3	2:A:554:VAL:HB	1.84	0.59
2:A:608:ILE:HD11	2:A:635:ALA:HB2	1.85	0.59
2:A:598:ALA:O	2:A:602:ILE:HG13	2.03	0.59
2:A:764:LYS:HD3	2:A:1080:TYR:CG	2.38	0.59
2:A:246:SER:N	2:A:247:PRO:CD	2.67	0.58
2:A:134:ILE:HG23	2:A:136:THR:HG22	1.85	0.58
2:A:135:LEU:HB3	2:A:706:GLN:HG2	1.86	0.58
2:A:591:SER:HB2	2:A:596:THR:HG21	1.85	0.58
2:A:316:ILE:HD13	2:A:684:GLY:HA3	1.84	0.58

Continued on next page...

Continued from previous page...

Atom-1	Atom-2	Interatomic distance (Å)	Clash overlap (Å)
2:A:762:THR:HA	2:A:1077:ARG:O	2.04	0.58
2:A:6:LEU:HD22	2:A:6:LEU:N	2.18	0.58
2:A:784:ILE:HD12	2:A:788:PHE:CE2	2.39	0.58
2:A:832:ALA:O	2:A:836:LYS:HG3	2.04	0.58
2:A:553:LYS:O	2:A:557:THR:HG22	2.02	0.58
2:A:312:VAL:HG23	2:A:313:ASP:N	2.19	0.57
2:A:581:ILE:O	2:A:581:ILE:HG22	2.04	0.57
2:A:518:TYR:H	2:A:518:TYR:HD2	1.49	0.57
2:A:343:ALA:O	2:A:346:GLN:HG3	2.04	0.57
2:A:477:VAL:HG21	2:A:594:LYS:HG3	1.85	0.57
2:A:241:ALA:HB3	2:A:456:GLY:HA2	1.86	0.57
2:A:865:VAL:CG2	2:A:866:THR:H	2.13	0.57
2:A:264:ASN:HD21	2:A:268:GLU:HG3	1.69	0.57
2:A:428:MET:HE1	2:A:811:TYR:HD1	1.68	0.57
2:A:872:ILE:HG22	2:A:1073:ILE:HA	1.86	0.57
2:A:976:VAL:O	2:A:976:VAL:HG12	2.04	0.57
2:A:28:TYR:HA	2:A:35:GLU:OE2	2.04	0.57
2:A:756:VAL:HG13	2:A:788:PHE:CZ	2.40	0.57
2:A:319:PHE:N	2:A:320:PRO:CD	2.68	0.57
2:A:621:PHE:CD1	2:A:637:LEU:HD22	2.39	0.56
2:A:318:LYS:HB2	2:A:318:LYS:NZ	2.20	0.56
2:A:331:HIS:NE2	2:A:692:GLY:HA2	2.20	0.56
2:A:821:PHE:N	2:A:821:PHE:CD2	2.73	0.56
2:A:370:GLU:O	2:A:374:MET:HG3	2.05	0.56
2:A:514:THR:HG22	2:A:638:GLN:HG3	1.88	0.56
2:A:477:VAL:HA	2:A:480:MET:CE	2.36	0.56
2:A:469:TYR:CD1	2:A:564:THR:HG22	2.40	0.56
2:A:449:LEU:HD22	2:A:573:VAL:CG1	2.35	0.56
2:A:549:THR:HG21	2:A:554:VAL:HG11	1.88	0.56
2:A:1024:GLY:O	2:A:1025:LYS:CB	2.53	0.56
2:A:261:PHE:HD2	2:A:899:PHE:HB3	1.71	0.56
2:A:488:ARG:HG2	2:A:494:TYR:CE1	2.40	0.56
2:A:962:LEU:O	2:A:967:ILE:HB	2.06	0.55
2:A:419:LYS:HB2	2:A:422:MET:HG3	1.88	0.55
2:A:734:THR:HA	2:A:737:MET:CE	2.36	0.55
2:A:930:ILE:O	2:A:934:ILE:HG13	2.06	0.55
2:A:161:LYS:O	2:A:165:ARG:HG3	2.06	0.55
2:A:453:ASP:HB2	2:A:699:GLU:HG3	1.88	0.55
2:A:516:VAL:HG21	2:A:675:ILE:HG21	1.89	0.55
2:A:135:LEU:HD22	2:A:709:GLN:NE2	2.19	0.55
2:A:781:GLU:O	2:A:785:GLN:HG3	2.07	0.55

Continued on next page...

Continued from previous page...

Atom-1	Atom-2	Interatomic distance (Å)	Clash overlap (Å)
2:A:528:GLN:O	2:A:531:THR:HG22	2.07	0.55
2:A:984:ASP:O	2:A:988:ILE:HG12	2.07	0.55
2:A:1019:ARG:HD2	2:A:1053:SER:OG	2.07	0.55
2:A:301:VAL:C	2:A:304:PRO:HD2	2.27	0.54
1:X:1105:A:H5'	2:A:400:ALA:CB	2.36	0.54
2:A:409:LYS:HB2	2:A:409:LYS:NZ	2.23	0.54
2:A:933:LEU:HD23	2:A:962:LEU:HD22	1.89	0.54
2:A:558:LEU:O	2:A:558:LEU:HD23	2.08	0.54
2:A:177:ILE:CD1	2:A:203:LEU:HD11	2.34	0.54
2:A:312:VAL:HG23	2:A:313:ASP:H	1.72	0.54
2:A:72:LEU:CD2	2:A:864:PRO:HD3	2.38	0.54
2:A:324:LYS:O	2:A:328:TRP:CD1	2.60	0.54
2:A:803:ALA:HA	2:A:808:PHE:CD2	2.42	0.54
2:A:999:ILE:HD11	2:A:1009:PHE:CE2	2.43	0.54
2:A:539:ILE:HG23	2:A:562:LYS:HE3	1.90	0.53
2:A:884:PHE:CD1	2:A:1059:PRO:HD3	2.43	0.53
2:A:959:GLN:NE2	2:A:973:ASP:OD1	2.42	0.53
2:A:945:GLU:HG2	2:A:992:TYR:CE1	2.41	0.53
2:A:951:ILE:HG12	2:A:985:LYS:HA	1.90	0.53
2:A:1003:CYS:SG	2:A:1007:PHE:CZ	3.02	0.53
2:A:878:LEU:HD22	2:A:1036:TYR:HD1	1.74	0.53
2:A:386:LEU:O	2:A:557:THR:HG21	2.08	0.53
2:A:454:VAL:CG1	2:A:457:ARG:HB3	2.38	0.53
2:A:248:MET:HG2	2:A:326:TYR:CE1	2.43	0.53
2:A:708:ASP:O	2:A:712:ILE:HG13	2.08	0.53
2:A:244:VAL:CG1	2:A:329:SER:HB3	2.38	0.53
2:A:255:VAL:O	2:A:673:VAL:HG21	2.07	0.53
2:A:281:PRO:HG2	2:A:284:THR:OG1	2.08	0.53
2:A:116:SER:HB3	2:A:197:LYS:HG3	1.91	0.53
2:A:145:VAL:HG21	2:A:211:ILE:HG23	1.90	0.53
2:A:719:VAL:HG12	2:A:723:ARG:HD2	1.90	0.53
2:A:115:THR:HB	2:A:197:LYS:HA	1.91	0.53
2:A:399:SER:HB3	2:A:838:LYS:HB3	1.91	0.53
2:A:1012:PRO:O	2:A:1016:LYS:HG3	2.09	0.53
2:A:381:HIS:O	2:A:382:ASP:CB	2.56	0.53
2:A:503:TYR:CB	2:A:687:ILE:HD13	2.33	0.53
2:A:813:THR:O	2:A:817:GLU:HG3	2.09	0.53
2:A:368:ARG:HG3	2:A:541:GLY:N	2.24	0.52
1:X:1107:C:H5''	1:X:1107:C:C6	2.44	0.52
2:A:450:GLY:O	2:A:462:ILE:N	2.41	0.52
2:A:141:ASN:O	2:A:145:VAL:HG23	2.10	0.52

Continued on next page...

Continued from previous page...

Atom-1	Atom-2	Interatomic distance (Å)	Clash overlap (Å)
2:A:185:HIS:H	2:A:185:HIS:CD2	2.28	0.52
2:A:229:LEU:O	2:A:233:SER:HB3	2.10	0.52
2:A:248:MET:HE3	2:A:248:MET:O	2.09	0.52
2:A:313:ASP:N	2:A:313:ASP:OD2	2.42	0.52
2:A:951:ILE:HG13	2:A:985:LYS:HG2	1.92	0.52
2:A:217:VAL:HG13	2:A:222:ASP:HB2	1.90	0.52
2:A:733:LEU:C	2:A:737:MET:HE3	2.29	0.52
2:A:824:ASN:OD1	2:A:828:SER:HB2	2.10	0.52
2:A:330:PHE:CE1	2:A:690:ARG:CZ	2.93	0.52
2:A:495:SER:OG	2:A:496:GLN:N	2.43	0.51
2:A:821:PHE:N	2:A:821:PHE:HD2	2.08	0.51
2:A:858:LEU:O	2:A:862:GLN:HG2	2.10	0.51
2:A:449:LEU:HD22	2:A:573:VAL:HG11	1.93	0.51
2:A:361:ARG:O	2:A:365:MET:HG2	2.09	0.51
2:A:375:LEU:C	2:A:378:PRO:HD2	2.31	0.51
2:A:22:VAL:HG22	2:A:77:TYR:HB2	1.91	0.51
2:A:83:ASN:O	2:A:85:VAL:N	2.36	0.51
2:A:397:MET:HA	2:A:470:PHE:CE2	2.45	0.51
2:A:428:MET:CE	2:A:811:TYR:HD1	2.24	0.51
2:A:439:PRO:HD3	2:A:468:GLU:HG2	1.93	0.51
2:A:705:THR:O	2:A:709:GLN:HG3	2.10	0.51
2:A:35:GLU:O	2:A:39:ILE:HG13	2.10	0.51
2:A:55:LEU:O	2:A:59:PHE:HD2	1.94	0.51
2:A:258:ASN:OD1	2:A:275:TYR:HD1	1.93	0.51
2:A:312:VAL:HG23	2:A:313:ASP:OD2	2.10	0.51
2:A:449:LEU:CD2	2:A:573:VAL:HG11	2.40	0.51
2:A:1070:MET:O	2:A:1073:ILE:HG13	2.10	0.51
2:A:87:ARG:O	2:A:90:VAL:HG22	2.11	0.51
2:A:246:SER:N	2:A:247:PRO:HD3	2.26	0.51
2:A:389:SER:HG	2:A:557:THR:CB	2.24	0.51
2:A:532:GLN:HA	2:A:532:GLN:OE1	2.10	0.51
2:A:253:ALA:HB1	2:A:671:SER:HB2	1.93	0.51
2:A:4:TYR:HB3	2:A:754:GLU:OE1	2.11	0.51
2:A:430:ASN:C	2:A:432:ARG:H	2.13	0.51
2:A:430:ASN:O	2:A:432:ARG:N	2.44	0.51
2:A:518:TYR:CD2	2:A:518:TYR:N	2.78	0.51
2:A:734:THR:HA	2:A:737:MET:HE1	1.92	0.51
2:A:909:TYR:CE2	2:A:1049:GLY:O	2.64	0.51
1:X:1102:G:N1	2:A:190:ARG:HD3	2.26	0.50
1:X:1105:A:C5'	2:A:400:ALA:HB1	2.40	0.50
2:A:894:ILE:O	2:A:894:ILE:HG13	2.10	0.50

Continued on next page...

Continued from previous page...

Atom-1	Atom-2	Interatomic distance (Å)	Clash overlap (Å)
2:A:887:VAL:HG22	2:A:1054:LEU:HD11	1.93	0.50
1:X:1102:G:H3'	1:X:1103:U:C6	2.47	0.50
2:A:14:PHE:CE2	2:A:147:PHE:HB2	2.46	0.50
2:A:383:ASP:O	2:A:387:ARG:HG3	2.12	0.50
2:A:477:VAL:HA	2:A:480:MET:HE2	1.92	0.50
2:A:892:LEU:HD22	2:A:1017:LEU:HD11	1.93	0.50
2:A:428:MET:HG2	2:A:433:TYR:CG	2.47	0.50
2:A:721:ARG:HH11	2:A:721:ARG:CG	2.24	0.50
2:A:370:GLU:HA	2:A:373:LYS:NZ	2.26	0.50
2:A:446:PRO:HB2	2:A:574:GLN:HG2	1.92	0.50
2:A:534:PHE:HZ	2:A:599:ALA:HB1	1.77	0.50
2:A:372:VAL:HA	2:A:545:LEU:HD21	1.94	0.50
2:A:135:LEU:HB2	2:A:709:GLN:NE2	2.27	0.50
2:A:572:TYR:CE1	2:A:585:GLN:HB2	2.47	0.49
2:A:681:TYR:CE2	2:A:688:PHE:HB2	2.47	0.49
2:A:387:ARG:HB3	2:A:387:ARG:NH1	2.28	0.49
2:A:207:ALA:O	2:A:211:ILE:HG13	2.13	0.49
2:A:784:ILE:HG23	2:A:788:PHE:CE2	2.48	0.49
2:A:920:GLN:OE1	2:A:920:GLN:HA	2.12	0.49
2:A:399:SER:O	2:A:419:LYS:HD2	2.12	0.49
2:A:798:ILE:O	2:A:802:ILE:HG22	2.12	0.49
2:A:897:GLN:OE1	2:A:897:GLN:N	2.37	0.49
2:A:899:PHE:C	2:A:901:PRO:HD3	2.33	0.49
2:A:989:LEU:O	2:A:993:VAL:HG23	2.12	0.49
2:A:49:SER:C	2:A:51:ASN:H	2.16	0.49
2:A:473:GLN:HG2	2:A:561:TYR:CD1	2.48	0.49
2:A:424:VAL:O	2:A:428:MET:HG3	2.12	0.49
2:A:428:MET:HG2	2:A:433:TYR:CB	2.43	0.49
2:A:125:TYR:HB2	2:A:193:TYR:CD1	2.47	0.48
2:A:165:ARG:HE	2:A:220:HIS:HA	1.78	0.48
2:A:5:ASN:ND2	2:A:71:LEU:HD23	2.28	0.48
2:A:142:LEU:HD23	2:A:211:ILE:HD11	1.95	0.48
2:A:324:LYS:HG3	2:A:328:TRP:CD1	2.48	0.48
2:A:846:SER:OG	2:A:850:ARG:NH2	2.46	0.48
2:A:849:LYS:O	2:A:853:GLN:HG2	2.13	0.48
2:A:387:ARG:NH1	2:A:553:LYS:HG3	2.27	0.48
2:A:409:LYS:HB2	2:A:409:LYS:HZ3	1.77	0.48
2:A:681:TYR:CE2	2:A:688:PHE:CB	2.96	0.48
2:A:575:ILE:CD1	2:A:584:ILE:HG12	2.44	0.48
2:A:695:LEU:HG	2:A:713:LEU:CD1	2.44	0.48
1:X:1105:A:C5	2:A:462:ILE:HG21	2.48	0.48

Continued on next page...

Continued from previous page...

Atom-1	Atom-2	Interatomic distance (Å)	Clash overlap (Å)
1:X:1104:G:N3	1:X:1104:G:H2'	2.28	0.48
2:A:534:PHE:CZ	2:A:599:ALA:HB1	2.49	0.48
1:X:1107:C:H5''	1:X:1107:C:H6	1.78	0.47
2:A:532:GLN:CB	2:A:533:PRO:HD3	2.44	0.47
2:A:279:ILE:HG22	2:A:648:ILE:HD12	1.95	0.47
2:A:452:ARG:HD2	2:A:699:GLU:OE2	2.14	0.47
2:A:454:VAL:HG13	2:A:457:ARG:HB3	1.97	0.47
2:A:523:GLN:HB2	2:A:665:LYS:O	2.13	0.47
2:A:145:VAL:CG2	2:A:211:ILE:HG23	2.44	0.47
2:A:424:VAL:HG22	2:A:467:TYR:CD2	2.49	0.47
2:A:514:THR:HG22	2:A:638:GLN:HA	1.97	0.47
2:A:84:ALA:HB1	2:A:88:LYS:NZ	2.29	0.47
2:A:368:ARG:O	2:A:372:VAL:HG23	2.15	0.47
2:A:744:ILE:HD11	2:A:750:LEU:HB2	1.96	0.47
2:A:244:VAL:HG11	2:A:329:SER:HB3	1.97	0.47
2:A:409:LYS:H	2:A:409:LYS:HZ2	1.62	0.47
2:A:612:LEU:O	2:A:615:ILE:HG12	2.15	0.47
2:A:225:ILE:HD13	2:A:325:ILE:HG12	1.95	0.47
2:A:376:GLU:O	2:A:380:LYS:HG3	2.15	0.47
2:A:516:VAL:N	2:A:671:SER:O	2.47	0.47
2:A:605:LEU:O	2:A:609:LYS:HG3	2.15	0.47
2:A:699:GLU:OE1	2:A:700:LYS:HE2	2.14	0.47
2:A:820:LEU:C	2:A:821:PHE:HD2	2.17	0.47
2:A:887:VAL:HG12	2:A:888:SER:N	2.30	0.47
1:X:1101:U:O4	2:A:415:ILE:HG13	2.14	0.47
2:A:102:LEU:HD22	2:A:102:LEU:N	2.30	0.47
2:A:210:SER:OG	2:A:230:ILE:HG23	2.15	0.47
2:A:420:LYS:CG	2:A:467:TYR:HB3	2.45	0.47
2:A:687:ILE:HG23	2:A:900:MET:HG3	1.95	0.47
2:A:794:GLN:HG2	2:A:853:GLN:OE1	2.15	0.47
2:A:4:TYR:HD1	2:A:733:LEU:HD22	1.79	0.47
2:A:169:LEU:HD21	2:A:227:LYS:HB2	1.96	0.47
2:A:295:MET:O	2:A:300:LEU:HB2	2.15	0.47
2:A:470:PHE:HE1	2:A:594:LYS:HD3	1.80	0.47
2:A:6:LEU:H	2:A:6:LEU:CD2	2.23	0.47
2:A:75:LEU:HD23	2:A:75:LEU:HA	1.79	0.47
2:A:681:TYR:CD2	2:A:688:PHE:HB2	2.50	0.47
2:A:461:ILE:HD11	2:A:586:TYR:CZ	2.50	0.46
2:A:825:ASN:O	2:A:829:ARG:HG2	2.14	0.46
2:A:192:GLU:O	2:A:196:MET:HB2	2.16	0.46
2:A:675:ILE:O	2:A:675:ILE:HG13	2.14	0.46

Continued on next page...

Continued from previous page...

Atom-1	Atom-2	Interatomic distance (Å)	Clash overlap (Å)
2:A:75:LEU:HD22	2:A:748:LEU:HD21	1.98	0.46
2:A:879:ARG:HG3	2:A:879:ARG:HH11	1.80	0.46
2:A:865:VAL:HG13	2:A:866:THR:O	2.15	0.46
2:A:1000:ASN:O	2:A:1005:GLN:HB3	2.15	0.46
2:A:12:LEU:HD22	2:A:16:TYR:HE2	1.81	0.46
2:A:84:ALA:O	2:A:88:LYS:HG3	2.16	0.46
2:A:191:TYR:CE2	2:A:204:VAL:HG11	2.51	0.46
2:A:193:TYR:CZ	2:A:197:LYS:HD2	2.51	0.46
2:A:56:ARG:O	2:A:60:VAL:HG23	2.15	0.46
2:A:532:GLN:HB3	2:A:533:PRO:HD3	1.98	0.46
2:A:622:ALA:O	2:A:637:LEU:HA	2.16	0.46
2:A:952:SER:HB3	2:A:1071:TRP:CE3	2.52	0.45
2:A:168:ASP:O	2:A:171:THR:HB	2.16	0.45
2:A:519:THR:HG23	2:A:667:LYS:O	2.16	0.45
2:A:703:GLN:CD	2:A:703:GLN:N	2.69	0.45
2:A:712:ILE:HD13	2:A:1086:PHE:CD2	2.50	0.45
2:A:62:TYR:O	2:A:66:ILE:HG12	2.16	0.45
2:A:261:PHE:CD2	2:A:899:PHE:HB3	2.49	0.45
2:A:556:GLN:HA	2:A:556:GLN:NE2	2.29	0.45
2:A:623:THR:CG2	2:A:626:ILE:HG13	2.46	0.45
2:A:860:MET:HE3	2:A:860:MET:HB2	1.82	0.45
2:A:126:THR:OG1	2:A:128:SER:HB3	2.17	0.45
2:A:252:VAL:HG23	2:A:253:ALA:N	2.32	0.45
2:A:215:MET:HE2	2:A:731:PHE:CD1	2.52	0.45
1:X:1106:A:O5'	1:X:1106:A:H8	2.00	0.45
2:A:213:MET:O	2:A:217:VAL:HG23	2.15	0.45
2:A:28:TYR:HD2	2:A:72:LEU:HB2	1.82	0.45
2:A:293:ASP:O	2:A:297:LYS:HG2	2.17	0.45
2:A:538:ILE:O	2:A:542:LEU:HG	2.17	0.45
2:A:659:TYR:CD1	2:A:666:VAL:HG21	2.52	0.45
2:A:515:MET:HG2	2:A:639:PHE:HE2	1.82	0.45
2:A:580:VAL:HG12	2:A:581:ILE:N	2.32	0.45
2:A:791:LEU:HD23	2:A:791:LEU:N	2.31	0.45
2:A:803:ALA:HA	2:A:808:PHE:CE2	2.52	0.45
2:A:120:PRO:HD2	2:A:124:GLU:OE2	2.17	0.45
2:A:531:THR:HG21	2:A:587:GLY:O	2.17	0.45
2:A:667:LYS:O	2:A:667:LYS:HG3	2.16	0.45
2:A:899:PHE:O	2:A:901:PRO:HD3	2.17	0.45
2:A:616:SER:O	2:A:617:ASN:C	2.54	0.44
2:A:824:ASN:CB	2:A:828:SER:HB2	2.47	0.44
2:A:253:ALA:CB	2:A:671:SER:HB2	2.48	0.44

Continued on next page...

Continued from previous page...

Atom-1	Atom-2	Interatomic distance (Å)	Clash overlap (Å)
2:A:667:LYS:NZ	2:A:676:GLU:OE1	2.51	0.44
2:A:837:ALA:O	2:A:840:ASN:ND2	2.49	0.44
2:A:161:LYS:HG2	2:A:165:ARG:CZ	2.47	0.44
2:A:520:ASP:OD1	2:A:520:ASP:C	2.56	0.44
2:A:611:VAL:O	2:A:615:ILE:HG23	2.17	0.44
2:A:847:LEU:HD23	2:A:850:ARG:NH1	2.32	0.44
2:A:165:ARG:HD3	2:A:223:TYR:CB	2.47	0.44
2:A:762:THR:HA	2:A:1078:SER:HB3	2.00	0.44
2:A:24:ILE:HD12	2:A:45:CYS:HB3	2.00	0.44
2:A:166:ARG:NH2	2:A:218:PHE:CE1	2.85	0.44
2:A:278:ALA:HB2	2:A:673:VAL:HG11	2.00	0.44
2:A:134:ILE:CG2	2:A:136:THR:HG22	2.46	0.44
2:A:217:VAL:HG13	2:A:222:ASP:CB	2.48	0.44
2:A:1068:LYS:HA	2:A:1068:LYS:HD2	1.83	0.44
2:A:824:ASN:ND2	2:A:824:ASN:O	2.51	0.44
2:A:919:TYR:CD1	2:A:919:TYR:C	2.92	0.44
2:A:261:PHE:CE1	2:A:271:PHE:HB2	2.52	0.43
2:A:823:LYS:HE3	2:A:825:ASN:ND2	2.33	0.43
2:A:944:ILE:HG23	2:A:945:GLU:N	2.33	0.43
2:A:4:TYR:C	2:A:4:TYR:CD2	2.92	0.43
2:A:50:LYS:O	2:A:50:LYS:CG	2.65	0.43
2:A:283:GLN:HG3	2:A:284:THR:N	2.32	0.43
2:A:412:ARG:O	2:A:412:ARG:HG2	2.18	0.43
2:A:439:PRO:HA	2:A:440:PRO:HD3	1.82	0.43
2:A:151:LYS:HA	2:A:151:LYS:HD3	1.83	0.43
2:A:421:ASN:O	2:A:425:MET:HG3	2.18	0.43
2:A:491:ALA:HB3	2:A:629:ASP:HB2	2.00	0.43
2:A:851:ARG:HH11	2:A:851:ARG:HG2	1.83	0.43
2:A:34:LEU:O	2:A:37:ARG:HB2	2.18	0.43
2:A:88:LYS:O	2:A:91:LYS:HG3	2.19	0.43
2:A:392:ALA:HB2	2:A:939:VAL:HG21	2.01	0.43
2:A:842:TYR:CE2	2:A:844:PRO:HB2	2.53	0.43
2:A:954:HIS:HB2	2:A:957:GLU:OE2	2.18	0.43
2:A:22:VAL:CG2	2:A:77:TYR:HB2	2.48	0.43
2:A:83:ASN:C	2:A:85:VAL:H	2.20	0.43
2:A:303:ILE:HB	2:A:304:PRO:HD3	2.01	0.43
2:A:430:ASN:C	2:A:432:ARG:N	2.71	0.43
2:A:847:LEU:O	2:A:851:ARG:HG3	2.18	0.43
2:A:72:LEU:HD23	2:A:861:LEU:O	2.19	0.43
2:A:787:ALA:O	2:A:790:SER:HB3	2.19	0.43
2:A:829:ARG:HG3	2:A:830:GLY:N	2.33	0.43

Continued on next page...

Continued from previous page...

Atom-1	Atom-2	Interatomic distance (Å)	Clash overlap (Å)
2:A:438:ILE:HD13	2:A:564:THR:HG23	2.01	0.43
2:A:446:PRO:HB2	2:A:574:GLN:CG	2.49	0.43
2:A:221:ASP:O	2:A:225:ILE:HG13	2.18	0.43
2:A:924:ASP:C	2:A:944:ILE:HD13	2.39	0.42
2:A:930:ILE:HG23	2:A:931:SER:N	2.34	0.42
2:A:1058:TYR:HA	2:A:1059:PRO:HD3	1.89	0.42
2:A:28:TYR:CZ	2:A:784:ILE:HG12	2.54	0.42
2:A:109:TYR:HA	2:A:118:LEU:HD21	2.01	0.42
2:A:258:ASN:OD1	2:A:275:TYR:CD1	2.70	0.42
2:A:376:GLU:CG	2:A:380:LYS:HE2	2.49	0.42
2:A:442:ASN:C	2:A:572:TYR:HB2	2.39	0.42
2:A:612:LEU:HD23	2:A:615:ILE:HD11	2.01	0.42
2:A:667:LYS:O	2:A:667:LYS:CG	2.67	0.42
2:A:744:ILE:CB	2:A:748:LEU:HD22	2.48	0.42
2:A:825:ASN:HA	2:A:828:SER:HB3	2.01	0.42
2:A:225:ILE:CD1	2:A:325:ILE:HG12	2.49	0.42
2:A:1058:TYR:HD2	2:A:1063:MET:HG2	1.83	0.42
2:A:257:ILE:O	2:A:275:TYR:HA	2.20	0.42
2:A:387:ARG:HH11	2:A:387:ARG:CB	2.30	0.42
2:A:863:LYS:O	2:A:863:LYS:HG3	2.18	0.42
2:A:967:ILE:HD12	2:A:967:ILE:N	2.33	0.42
2:A:1023:LYS:HD2	2:A:1058:TYR:O	2.20	0.42
2:A:26:ILE:HD12	2:A:42:HIS:CE1	2.54	0.42
2:A:165:ARG:HD3	2:A:223:TYR:HB2	2.01	0.42
2:A:264:ASN:ND2	2:A:268:GLU:HG3	2.32	0.42
2:A:558:LEU:HD23	2:A:558:LEU:C	2.40	0.42
2:A:248:MET:CE	2:A:319:PHE:HZ	2.33	0.42
2:A:303:ILE:N	2:A:304:PRO:CD	2.83	0.42
2:A:477:VAL:O	2:A:481:LEU:HG	2.20	0.42
2:A:173:VAL:O	2:A:177:ILE:HG12	2.20	0.42
2:A:758:THR:HG22	2:A:766:PHE:O	2.19	0.42
2:A:784:ILE:HD13	2:A:784:ILE:HA	1.84	0.42
2:A:1029:VAL:HG13	2:A:1066:LEU:HD23	2.02	0.42
2:A:186:ASN:H	2:A:186:ASN:HD22	1.66	0.41
2:A:619:HIS:ND1	2:A:619:HIS:N	2.67	0.41
2:A:40:GLU:O	2:A:44:LYS:HG3	2.20	0.41
2:A:520:ASP:HB2	2:A:667:LYS:HE2	2.01	0.41
2:A:531:THR:HB	2:A:589:VAL:HG23	2.02	0.41
2:A:83:ASN:HB3	2:A:84:ALA:H	1.56	0.41
2:A:319:PHE:N	2:A:320:PRO:HD2	2.36	0.41
2:A:277:ARG:HG2	2:A:277:ARG:HH11	1.85	0.41

Continued on next page...

Continued from previous page...

Atom-1	Atom-2	Interatomic distance (Å)	Clash overlap (Å)
2:A:376:GLU:HG3	2:A:380:LYS:HE2	2.02	0.41
2:A:1000:ASN:C	2:A:1005:GLN:HB3	2.41	0.41
2:A:1018:ILE:HD12	2:A:1037:ALA:CB	2.49	0.41
2:A:28:TYR:CE2	2:A:70:THR:HB	2.56	0.41
2:A:535:ARG:HB2	2:A:569:MET:SD	2.60	0.41
2:A:842:TYR:HD2	2:A:845:ILE:HG13	1.84	0.41
2:A:962:LEU:O	2:A:967:ILE:HD13	2.21	0.41
2:A:100:ALA:O	2:A:102:LEU:HD22	2.20	0.41
2:A:392:ALA:HB2	2:A:939:VAL:CG2	2.51	0.41
2:A:467:TYR:CD1	2:A:467:TYR:C	2.94	0.41
2:A:735:LYS:HD2	2:A:735:LYS:HA	1.88	0.41
2:A:165:ARG:NE	2:A:220:HIS:HA	2.35	0.41
2:A:428:MET:HG2	2:A:433:TYR:HB2	2.03	0.41
2:A:985:LYS:HB3	2:A:985:LYS:HE2	1.89	0.41
1:X:1102:G:H3'	1:X:1103:U:C5	2.55	0.41
2:A:61:GLU:OE2	2:A:62:TYR:CE2	2.74	0.41
2:A:439:PRO:CD	2:A:468:GLU:HG2	2.51	0.41
2:A:549:THR:HG21	2:A:554:VAL:CG1	2.51	0.41
2:A:681:TYR:CE1	2:A:688:PHE:HB3	2.56	0.41
2:A:804:ALA:O	2:A:809:LYS:HE3	2.20	0.41
2:A:14:PHE:CD1	2:A:150:GLU:OE1	2.74	0.41
2:A:183:PRO:HG2	2:A:204:VAL:HG22	2.02	0.41
2:A:968:PRO:HG2	2:A:971:ASP:HB2	2.03	0.41
2:A:150:GLU:O	2:A:153:GLU:HB2	2.21	0.40
2:A:214:LEU:HA	2:A:217:VAL:HG23	2.03	0.40
2:A:389:SER:HG	2:A:557:THR:HB	1.86	0.40
2:A:1054:LEU:HD12	2:A:1054:LEU:HA	1.92	0.40
2:A:249:SER:O	2:A:252:VAL:HG22	2.21	0.40
2:A:290:GLN:O	2:A:294:ASN:ND2	2.55	0.40
2:A:441:VAL:HB	2:A:447:ILE:HD11	2.02	0.40
2:A:717:TYR:OH	2:A:729:ARG:HG3	2.21	0.40
2:A:111:ASN:O	2:A:113:LYS:N	2.46	0.40
2:A:408:LEU:HD22	2:A:426:ASP:CG	2.41	0.40
2:A:477:VAL:HA	2:A:480:MET:HE3	2.01	0.40
2:A:1020:ILE:O	2:A:1020:ILE:HG22	2.20	0.40
2:A:41:PHE:HE1	2:A:58:LEU:HB3	1.87	0.40
2:A:804:ALA:CA	2:A:809:LYS:HE3	2.49	0.40

There are no symmetry-related clashes.

5.3 Torsion angles [i](#)

5.3.1 Protein backbone [i](#)

In the following table, the Percentiles column shows the percent Ramachandran outliers of the chain as a percentile score with respect to all X-ray entries followed by that with respect to entries of similar resolution.

The Analysed column shows the number of residues for which the backbone conformation was analysed, and the total number of residues.

Mol	Chain	Analysed	Favoured	Allowed	Outliers	Percentiles
2	A	1067/1095 (97%)	966 (90%)	83 (8%)	18 (2%)	9 39

All (18) Ramachandran outliers are listed below:

Mol	Chain	Res	Type
2	A	382	ASP
2	A	822	SER
2	A	978	SER
2	A	1025	LYS
2	A	106	GLU
2	A	112	ASN
2	A	431	GLU
2	A	495	SER
2	A	82	TYR
2	A	102	LEU
2	A	1027	PRO
2	A	397	MET
2	A	84	ALA
2	A	128	SER
2	A	807	THR
2	A	865	VAL
2	A	864	PRO
2	A	439	PRO

5.3.2 Protein sidechains [i](#)

In the following table, the Percentiles column shows the percent sidechain outliers of the chain as a percentile score with respect to all X-ray entries followed by that with respect to entries of similar resolution.

The Analysed column shows the number of residues for which the sidechain conformation was analysed, and the total number of residues.

Mol	Chain	Analysed	Rotameric	Outliers	Percentiles
2	A	975/996 (98%)	923 (95%)	52 (5%)	22 58

All (52) residues with a non-rotameric sidechain are listed below:

Mol	Chain	Res	Type
2	A	17	ASN
2	A	48	ASN
2	A	63	ASN
2	A	79	TYR
2	A	87	ARG
2	A	91	LYS
2	A	121	THR
2	A	128	SER
2	A	130	MET
2	A	143	ASN
2	A	155	ASP
2	A	186	ASN
2	A	194	ASP
2	A	196	MET
2	A	229	LEU
2	A	313	ASP
2	A	358	GLU
2	A	387	ARG
2	A	409	LYS
2	A	415	ILE
2	A	418	THR
2	A	503	TYR
2	A	508	ARG
2	A	512	ASN
2	A	517	LEU
2	A	518	TYR
2	A	550	ASN
2	A	584	ILE
2	A	619	HIS
2	A	620	SER
2	A	652	SER
2	A	654	ASP
2	A	671	SER
2	A	708	ASP
2	A	721	ARG
2	A	784	ILE
2	A	791	LEU
2	A	820	LEU

Continued on next page...

Continued from previous page...

Mol	Chain	Res	Type
2	A	824	ASN
2	A	868	LYS
2	A	880	ASP
2	A	895	GLN
2	A	900	MET
2	A	916	SER
2	A	922	GLU
2	A	939	VAL
2	A	970	ILE
2	A	1022	PHE
2	A	1027	PRO
2	A	1047	LYS
2	A	1054	LEU
2	A	1088	GLU

Sometimes sidechains can be flipped to improve hydrogen bonding and reduce clashes. All (28) such sidechains are listed below:

Mol	Chain	Res	Type
2	A	36	ASN
2	A	63	ASN
2	A	143	ASN
2	A	185	HIS
2	A	186	ASN
2	A	289	ASN
2	A	308	GLN
2	A	473	GLN
2	A	496	GLN
2	A	512	ASN
2	A	528	GLN
2	A	556	GLN
2	A	563	GLN
2	A	565	GLN
2	A	574	GLN
2	A	617	ASN
2	A	646	GLN
2	A	653	ASN
2	A	709	GLN
2	A	824	ASN
2	A	825	ASN
2	A	853	GLN
2	A	875	ASN
2	A	895	GLN

Continued on next page...

Continued from previous page...

Mol	Chain	Res	Type
2	A	912	GLN
2	A	959	GLN
2	A	1048	ASN
2	A	1057	ASN

5.3.3 RNA [i](#)

Mol	Chain	Analysed	Backbone Outliers	Pucker Outliers
1	X	7/8 (87%)	6 (85%)	5 (71%)

All (6) RNA backbone outliers are listed below:

Mol	Chain	Res	Type
1	X	1102	G
1	X	1103	U
1	X	1104	G
1	X	1105	A
1	X	1106	A
1	X	1107	C

All (5) RNA pucker outliers are listed below:

Mol	Chain	Res	Type
1	X	1101	U
1	X	1102	G
1	X	1103	U
1	X	1105	A
1	X	1106	A

5.4 Non-standard residues in protein, DNA, RNA chains [i](#)

There are no non-standard protein/DNA/RNA residues in this entry.

5.5 Carbohydrates [i](#)

There are no monosaccharides in this entry.

5.6 Ligand geometry [i](#)

There are no ligands in this entry.

5.7 Other polymers [i](#)

There are no such residues in this entry.

5.8 Polymer linkage issues [i](#)

There are no chain breaks in this entry.

6 Fit of model and data [i](#)

6.1 Protein, DNA and RNA chains [i](#)

In the following table, the column labelled ‘#RSRZ > 2’ contains the number (and percentage) of RSRZ outliers, followed by percent RSRZ outliers for the chain as percentile scores relative to all X-ray entries and entries of similar resolution. The OWAB column contains the minimum, median, 95th percentile and maximum values of the occupancy-weighted average B-factor per residue. The column labelled ‘Q < 0.9’ lists the number of (and percentage) of residues with an average occupancy less than 0.9.

Mol	Chain	Analysed	<RSRZ>	#RSRZ > 2		OWAB(Å ²)	Q < 0.9
1	X	7/8 (87%)	0.08	0	100 100	45, 56, 71, 77	0
2	A	1073/1095 (97%)	-0.36	9 (0%)	86 65	13, 46, 75, 111	0
All	All	1080/1103 (97%)	-0.36	9 (0%)	86 65	13, 46, 75, 111	0

All (9) RSRZ outliers are listed below:

Mol	Chain	Res	Type	RSRZ
2	A	824	ASN	3.7
2	A	867	PHE	3.0
2	A	866	THR	3.0
2	A	1024	GLY	2.9
2	A	77	TYR	2.6
2	A	1088	GLU	2.6
2	A	865	VAL	2.2
2	A	868	LYS	2.2
2	A	79	TYR	2.1

6.2 Non-standard residues in protein, DNA, RNA chains [i](#)

There are no non-standard protein/DNA/RNA residues in this entry.

6.3 Carbohydrates [i](#)

There are no monosaccharides in this entry.

6.4 Ligands [i](#)

There are no ligands in this entry.

6.5 Other polymers [i](#)

There are no such residues in this entry.