



# Full wwPDB X-ray Structure Validation Report ⓘ

May 9, 2026 – 10:56 pm BST

PDB ID : 9R5A / pdb\_00009r5a  
Title : Crystal structure of an NtA622L variant in complex with NADP+  
Authors : Mokos, D.; Daniel, B.  
Deposited on : 2025-05-08  
Resolution : 1.65 Å(reported)

This is a Full wwPDB X-ray Structure Validation Report for a publicly released PDB entry.

We welcome your comments at [validation@mail.wwpdb.org](mailto:validation@mail.wwpdb.org)

A user guide is available at

<https://www.wwpdb.org/validation/2017/XrayValidationReportHelp>

with specific help available everywhere you see the ⓘ symbol.

The types of validation reports are described at

<http://www.wwpdb.org/validation/2017/FAQs#types>.

---

The following versions of software and data (see [references ⓘ](#)) were used in the production of this report:

MolProbity : 4-5-2 with Phenix2.0  
Mogul : 1.8.4, CSD as541be (2020)  
Xtriage (Phenix) : 2.0  
EDS : 3.0  
Buster-report : wwPDB partial adaption of 1.1.7 (2018)  
Percentile statistics : 20250101.v01 (using entries in the PDB archive January 1st 2025)  
CCP4 : 9.0.010 (Gargrove)  
Density-Fitness : 1.0.12  
Ideal geometry (proteins) : Engh & Huber (2001)  
Ideal geometry (DNA, RNA) : Parkinson et al. (1996)  
Validation Pipeline (wwPDB-VP) : 2.49

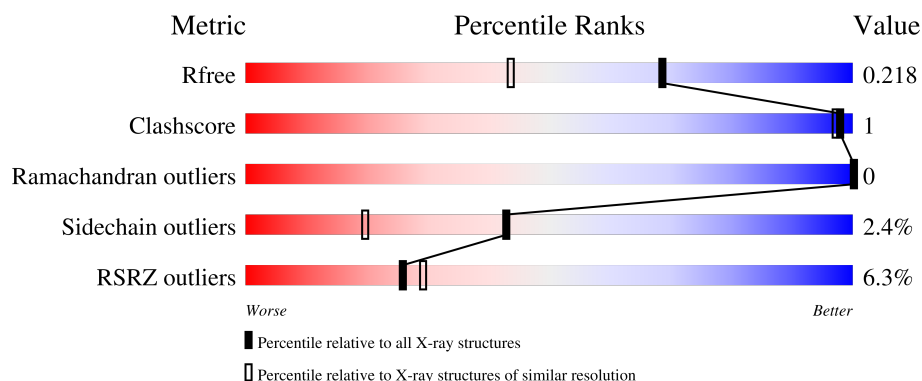
# 1 Overall quality at a glance i

The following experimental techniques were used to determine the structure:

## *X-RAY DIFFRACTION*

The reported resolution of this entry is 1.65 Å.

Percentile scores (ranging between 0-100) for global validation metrics of the entry are shown in the following graphic. The table shows the number of entries on which the scores are based.



Metric	Whole archive (#Entries)	Similar resolution (#Entries, resolution range(Å))
$R_{free}$	180053	2563 (1.66-1.66)
Clashscore	190562	2662 (1.66-1.66)
Ramachandran outliers	187476	2621 (1.66-1.66)
Sidechain outliers	187428	2621 (1.66-1.66)
RSRZ outliers	180081	2564 (1.66-1.66)

The table below summarises the geometric issues observed across the polymeric chains and their fit to the electron density. The red, orange, yellow and green segments of the lower bar indicate the fraction of residues that contain outliers for  $\geq 3$ , 2, 1 and 0 types of geometric quality criteria respectively. A grey segment represents the fraction of residues that are not modelled. The numeric value for each fraction is indicated below the corresponding segment, with a dot representing fractions  $\leq 5\%$ . The upper red bar (where present) indicates the fraction of residues that have poor fit to the electron density. The numeric value is given above the bar.

Mol	Chain	Length	Quality of chain
1	A	310	<div> <div style="width: 100%; height: 10px; background: linear-gradient(to right, red, orange, yellow, green);"></div> <div style="display: flex; justify-content: space-between; margin-top: 2px;"> <span>%</span> <span>93%</span> <span>5% ..</span> </div> </div>
1	B	310	<div> <div style="width: 100%; height: 10px; background: linear-gradient(to right, red, orange, yellow, green);"></div> <div style="display: flex; justify-content: space-between; margin-top: 2px;"> <span>%</span> <span>92%</span> <span>5% ..</span> </div> </div>
1	C	310	<div> <div style="display: flex; align-items: center; margin-bottom: 2px;"> <div style="width: 16%; height: 10px; background: red; margin-right: 5px;"></div> <div style="width: 84%; height: 10px; background: linear-gradient(to right, red, orange, yellow, green);"></div> </div> <div style="display: flex; justify-content: space-between; margin-top: 2px;"> <span>16%</span> <span>93%</span> <span>6% .</span> </div> </div>

## 2 Entry composition

There are 3 unique types of molecules in this entry. The entry contains 15456 atoms, of which 7481 are hydrogens and 0 are deuteriums.

In the tables below, the ZeroOcc column contains the number of atoms modelled with zero occupancy, the AltConf column contains the number of residues with at least one atom in alternate conformation and the Trace column contains the number of residues modelled with at most 2 atoms.

- Molecule 1 is a protein called Isoflavone reductase homolog A622-like.

Mol	Chain	Residues	Atoms						ZeroOcc	AltConf	Trace
1	A	307	Total	C	H	N	O	S	64	2	0
			4903	1575	2470	396	458	4			
1	B	306	Total	C	H	N	O	S	63	4	0
			4910	1577	2475	396	457	5			
1	C	307	Total	C	H	N	O	S	62	0	0
			4884	1569	2461	393	457	4			

There are 9 discrepancies between the modelled and reference sequences:

Chain	Residue	Modelled	Actual	Comment	Reference
A	99	ASN	LYS	engineered mutation	UNP B6VRE6
A	201	ILE	MET	engineered mutation	UNP B6VRE6
A	259	LEU	MET	engineered mutation	UNP B6VRE6
B	99	ASN	LYS	engineered mutation	UNP B6VRE6
B	201	ILE	MET	engineered mutation	UNP B6VRE6
B	259	LEU	MET	engineered mutation	UNP B6VRE6
C	99	ASN	LYS	engineered mutation	UNP B6VRE6
C	201	ILE	MET	engineered mutation	UNP B6VRE6
C	259	LEU	MET	engineered mutation	UNP B6VRE6

- Molecule 2 is NADP NICOTINAMIDE-ADENINE-DINUCLEOTIDE PHOSPHATE (CCD ID: NAP) (formula: C<sub>21</sub>H<sub>28</sub>N<sub>7</sub>O<sub>17</sub>P<sub>3</sub>) (labeled as "Ligand of Interest" by depositor).



Mol	Chain	Residues	Atoms						ZeroOcc	AltConf
2	A	1	Total	C	H	N	O	P	3	0
			73	21	25	7	17	3		
2	B	1	Total	C	H	N	O	P	3	0
			73	21	25	7	17	3		
2	C	1	Total	C	H	N	O	P	3	0
			73	21	25	7	17	3		

- Molecule 3 is water.

Mol	Chain	Residues	Atoms		ZeroOcc	AltConf
3	A	257	Total	O	0	0
			257	257		
3	B	223	Total	O	0	0
			223	223		
3	C	60	Total	O	0	0
			60	60		

### 3 Residue-property plots [i](#)

These plots are drawn for all protein, RNA, DNA and oligosaccharide chains in the entry. The first graphic for a chain summarises the proportions of the various outlier classes displayed in the second graphic. The second graphic shows the sequence view annotated by issues in geometry and electron density. Residues are color-coded according to the number of geometric quality criteria for which they contain at least one outlier: green = 0, yellow = 1, orange = 2 and red = 3 or more. A red dot above a residue indicates a poor fit to the electron density ( $RSRZ > 2$ ). Stretches of 2 or more consecutive residues without any outlier are shown as a green connector. Residues present in the sample, but not in the model, are shown in grey.

- Molecule 1: Isoflavone reductase homolog A622-like

Chain A: 



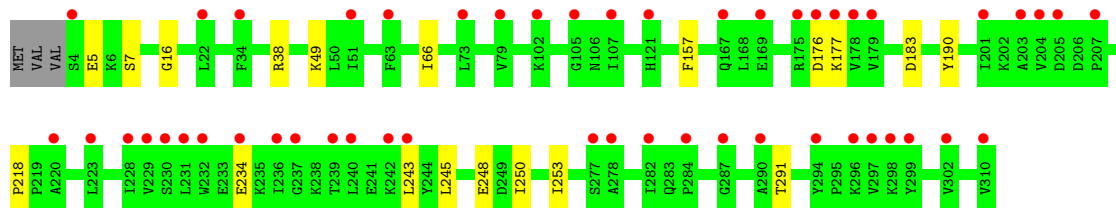
- Molecule 1: Isoflavone reductase homolog A622-like

Chain B: 



- Molecule 1: Isoflavone reductase homolog A622-like

Chain C: 



## 4 Data and refinement statistics

Property	Value	Source
Space group	P 1 21 1	Depositor
Cell constants a, b, c, $\alpha$ , $\beta$ , $\gamma$	64.75Å 65.24Å 116.84Å 90.00° 101.60° 90.00°	Depositor
Resolution (Å)	47.50 – 1.65 47.50 – 1.65	Depositor EDS
% Data completeness (in resolution range)	98.3 (47.50-1.65) 98.3 (47.50-1.65)	Depositor EDS
$R_{merge}$	0.07	Depositor
$R_{sym}$	(Not available)	Depositor
$\langle I/\sigma(I) \rangle$ <sup>1</sup>	1.35 (at 1.65Å)	Xtriage
Refinement program	REFMAC 5.8.0425	Depositor
R, $R_{free}$	0.191 , 0.218 0.191 , 0.218	Depositor DCC
$R_{free}$ test set	5571 reflections (4.97%)	wwPDB-VP
Wilson B-factor (Å <sup>2</sup> )	21.8	Xtriage
Anisotropy	0.088	Xtriage
Bulk solvent $k_{sol}$ (e/Å <sup>3</sup> ), $B_{sol}$ (Å <sup>2</sup> )	0.40 , 34.8	EDS
L-test for twinning <sup>2</sup>	$\langle  L  \rangle = 0.49$ , $\langle L^2 \rangle = 0.32$	Xtriage
Estimated twinning fraction	No twinning to report.	Xtriage
$F_o, F_c$ correlation	0.96	EDS
Total number of atoms	15456	wwPDB-VP
Average B, all atoms (Å <sup>2</sup> )	33.0	wwPDB-VP

Xtriage's analysis on translational NCS is as follows: *The largest off-origin peak in the Patterson function is 4.86% of the height of the origin peak. No significant pseudotranslation is detected.*

<sup>1</sup>Intensities estimated from amplitudes.

<sup>2</sup>Theoretical values of  $\langle |L| \rangle$ ,  $\langle L^2 \rangle$  for acentric reflections are 0.5, 0.333 respectively for untwinned datasets, and 0.375, 0.2 for perfectly twinned datasets.

## 5 Model quality

### 5.1 Standard geometry

Bond lengths and bond angles in the following residue types are not validated in this section: NAP

The Z score for a bond length (or angle) is the number of standard deviations the observed value is removed from the expected value. A bond length (or angle) with  $|Z| > 5$  is considered an outlier worth inspection. RMSZ is the root-mean-square of all Z scores of the bond lengths (or angles).

Mol	Chain	Bond lengths		Bond angles	
		RMSZ	$\# Z  > 5$	RMSZ	$\# Z  > 5$
1	A	0.85	0/2492	1.31	12/3381 (0.4%)
1	B	0.79	0/2502	1.28	12/3394 (0.4%)
1	C	0.72	0/2476	1.26	7/3359 (0.2%)
All	All	0.79	0/7470	1.28	31/10134 (0.3%)

Chiral center outliers are detected by calculating the chiral volume of a chiral center and verifying if the center is modelled as a planar moiety or with the opposite hand. A planarity outlier is detected by checking planarity of atoms in a peptide group, atoms in a mainchain group or atoms of a sidechain that are expected to be planar.

Mol	Chain	#Chirality outliers	#Planarity outliers
1	B	0	2

There are no bond length outliers.

All (31) bond angle outliers are listed below:

Mol	Chain	Res	Type	Atoms	Z	Observed(°)	Ideal(°)
1	A	5	GLU	CB-CG-CD	9.42	128.62	112.60
1	B	173	PRO	N-CA-CB	9.38	108.10	103.22
1	A	157	PHE	CA-CB-CG	7.46	121.26	113.80
1	C	248	GLU	CB-CG-CD	7.00	124.50	112.60
1	C	183	ASP	CA-CB-CG	6.86	119.46	112.60
1	A	176	ASP	CA-CB-CG	6.84	119.44	112.60
1	C	157	PHE	CA-CB-CG	6.77	120.57	113.80
1	A	57	TYR	CA-CB-CG	6.76	126.06	113.90
1	C	176	ASP	CA-CB-CG	6.36	118.95	112.60
1	A	204	VAL	CG1-CB-CG2	6.19	124.42	110.80
1	A	173	PRO	N-CA-CB	6.17	106.43	103.22
1	C	177	LYS	N-CA-CB	-6.16	100.46	110.81
1	A	57	TYR	CB-CA-C	-5.96	99.28	110.01

*Continued on next page...*

*Continued from previous page...*

Mol	Chain	Res	Type	Atoms	Z	Observed(°)	Ideal(°)
1	B	176	ASP	CA-CB-CG	5.87	118.47	112.60
1	B	46	GLU	CB-CG-CD	5.79	122.45	112.60
1	B	171	LYS	CG-CD-CE	5.79	124.62	111.30
1	B	117	PHE	CA-CB-CG	-5.76	108.04	113.80
1	B	256	GLU	CB-CG-CD	5.71	122.31	112.60
1	B	157	PHE	CA-CB-CG	5.66	119.46	113.80
1	B	63	PHE	CA-CB-CG	-5.66	108.14	113.80
1	B	177	LYS	N-CA-CB	-5.58	101.03	111.13
1	A	204	VAL	CA-CB-CG1	5.54	119.83	110.40
1	A	249	ASP	CA-CB-CG	5.44	118.04	112.60
1	A	183	ASP	CA-CB-CG	5.44	118.04	112.60
1	C	177	LYS	CB-CA-C	5.39	119.08	109.65
1	C	49	LYS	N-CA-CB	5.38	118.03	110.12
1	A	252	HIS	CB-CG-ND1	-5.18	114.94	122.70
1	B	204	VAL	CA-CB-CG1	5.15	119.16	110.40
1	A	161	PHE	CA-CB-CG	-5.05	108.75	113.80
1	B	41	THR	CA-CB-OG1	-5.05	102.03	109.60
1	B	177	LYS	CB-CA-C	5.03	119.64	109.68

There are no chirality outliers.

All (2) planarity outliers are listed below:

Mol	Chain	Res	Type	Group
1	B	123	HIS	Mainchain
1	B	175	ARG	Sidechain

## 5.2 Too-close contacts ⓘ

In the following table, the Non-H and H(model) columns list the number of non-hydrogen atoms and hydrogen atoms in the chain respectively. The H(added) column lists the number of hydrogen atoms added and optimized by MolProbity. The Clashes column lists the number of clashes within the asymmetric unit, whereas Symm-Clashes lists symmetry-related clashes.

Mol	Chain	Non-H	H(model)	H(added)	Clashes	Symm-Clashes
1	A	2433	2470	2456	2	0
1	B	2435	2475	2449	2	0
1	C	2423	2461	2454	5	0
2	A	48	25	25	0	0
2	B	48	25	25	0	0
2	C	48	25	25	4	0
3	A	257	0	0	0	0

*Continued on next page...*



*Continued from previous page...*

Mol	Chain	Non-H	H(model)	H(added)	Clashes	Symm-Clashes
3	B	223	0	0	0	0
3	C	60	0	0	1	0
All	All	7975	7481	7434	10	0

The all-atom clashscore is defined as the number of clashes found per 1000 atoms (including hydrogen atoms). The all-atom clashscore for this structure is 1.

All (10) close contacts within the same asymmetric unit are listed below, sorted by their clash magnitude.

Atom-1	Atom-2	Interatomic distance (Å)	Clash overlap (Å)
2:C:401:NAP:H8A	3:C:505:HOH:O	2.10	0.51
1:C:38:ARG:HD3	2:C:401:NAP:C6A	2.43	0.48
1:B:218:PRO:HA	1:B:291:THR:HG21	1.96	0.48
1:A:218:PRO:HA	1:A:291:THR:HG21	1.96	0.47
1:C:16:GLY:HA3	2:C:401:NAP:O1A	2.15	0.46
1:C:66:ILE:HG22	2:C:401:NAP:N6A	2.31	0.46
1:C:218:PRO:HA	1:C:291:THR:HG21	2.00	0.43
1:A:157:PHE:HB2	1:A:160:PHE:HB3	2.01	0.42
1:C:250:ILE:HA	1:C:253:ILE:HG12	2.02	0.42
1:B:81:VAL:HG21	1:B:204:VAL:HG13	2.00	0.42

There are no symmetry-related clashes.

## 5.3 Torsion angles [i](#)

### 5.3.1 Protein backbone [i](#)

In the following table, the Percentiles column shows the percent Ramachandran outliers of the chain as a percentile score with respect to all X-ray entries followed by that with respect to entries of similar resolution.

The Analysed column shows the number of residues for which the backbone conformation was analysed, and the total number of residues.

Mol	Chain	Analysed	Favoured	Allowed	Outliers	Percentiles	
1	A	307/310 (99%)	298 (97%)	9 (3%)	0	100	100
1	B	308/310 (99%)	299 (97%)	9 (3%)	0	100	100
1	C	305/310 (98%)	300 (98%)	5 (2%)	0	100	100
All	All	920/930 (99%)	897 (98%)	23 (2%)	0	100	100

There are no Ramachandran outliers to report.

### 5.3.2 Protein sidechains ⓘ

In the following table, the Percentiles column shows the percent sidechain outliers of the chain as a percentile score with respect to all X-ray entries followed by that with respect to entries of similar resolution.

The Analysed column shows the number of residues for which the sidechain conformation was analysed, and the total number of residues.

Mol	Chain	Analysed	Rotameric	Outliers	Percentiles	
1	A	269/271 (99%)	263 (98%)	6 (2%)	45	23
1	B	270/271 (100%)	262 (97%)	8 (3%)	36	13
1	C	268/271 (99%)	262 (98%)	6 (2%)	45	23
All	All	807/813 (99%)	787 (98%)	20 (2%)	43	18

All (20) residues with a non-rotameric sidechain are listed below:

Mol	Chain	Res	Type
1	A	4	SER
1	A	102	LYS
1	A	169	GLU
1	A	177	LYS
1	A	190	TYR
1	A	204	VAL
1	B	102	LYS
1	B	131	LEU
1	B	141[A]	MET
1	B	141[B]	MET
1	B	171	LYS
1	B	177	LYS
1	B	190	TYR
1	B	204	VAL
1	C	5	GLU
1	C	7	SER
1	C	190	TYR
1	C	234	GLU
1	C	243	LEU
1	C	245	LEU

Sometimes sidechains can be flipped to improve hydrogen bonding and reduce clashes. All (7) such sidechains are listed below:

Mol	Chain	Res	Type
1	A	123	HIS
1	A	155	ASN
1	A	264	ASN
1	B	155	ASN
1	C	121	HIS
1	C	155	ASN
1	C	255	GLN

### 5.3.3 RNA ⓘ

There are no RNA molecules in this entry.

## 5.4 Non-standard residues in protein, DNA, RNA chains ⓘ

There are no non-standard protein/DNA/RNA residues in this entry.

## 5.5 Carbohydrates ⓘ

There are no oligosaccharides in this entry.

## 5.6 Ligand geometry ⓘ

3 ligands are modelled in this entry.

In the following table, the Counts columns list the number of bonds (or angles) for which Mogul statistics could be retrieved, the number of bonds (or angles) that are observed in the model and the number of bonds (or angles) that are defined in the Chemical Component Dictionary. The Link column lists molecule types, if any, to which the group is linked. The Z score for a bond length (or angle) is the number of standard deviations the observed value is removed from the expected value. A bond length (or angle) with  $|Z| > 2$  is considered an outlier worth inspection. RMSZ is the root-mean-square of all Z scores of the bond lengths (or angles).

Mol	Type	Chain	Res	Link	Bond lengths			Bond angles		
					Counts	RMSZ	# $ Z  > 2$	Counts	RMSZ	# $ Z  > 2$
2	NAP	B	401	-	49,52,52	0.68	0	69,80,80	1.02	3 (4%)
2	NAP	C	401	-	49,52,52	0.81	1 (2%)	69,80,80	1.30	13 (18%)
2	NAP	A	401	-	49,52,52	0.70	1 (2%)	69,80,80	0.90	2 (2%)

In the following table, the Chirals column lists the number of chiral outliers, the number of chiral centers analysed, the number of these observed in the model and the number defined in the Chemical Component Dictionary. Similar counts are reported in the Torsion and Rings columns.

'-' means no outliers of that kind were identified.

Mol	Type	Chain	Res	Link	Chirals	Torsions	Rings
2	NAP	B	401	-	-	10/35/67/67	0/5/5/5
2	NAP	C	401	-	-	13/35/67/67	0/5/5/5
2	NAP	A	401	-	-	6/35/67/67	0/5/5/5

All (2) bond length outliers are listed below:

Mol	Chain	Res	Type	Atoms	Z	Observed(Å)	Ideal(Å)
2	C	401	NAP	P2B-O2B	3.19	1.65	1.59
2	A	401	NAP	P2B-O2B	2.19	1.63	1.59

All (18) bond angle outliers are listed below:

Mol	Chain	Res	Type	Atoms	Z	Observed(°)	Ideal(°)
2	C	401	NAP	C2B-C1B-N9A	3.75	119.84	113.53
2	C	401	NAP	O5B-C5B-C4B	3.39	120.65	108.99
2	B	401	NAP	C3N-C7N-N7N	3.10	121.47	117.75
2	C	401	NAP	O4B-C1B-N9A	3.02	114.02	108.06
2	B	401	NAP	C3N-C2N-N1N	3.00	123.36	120.43
2	C	401	NAP	C4A-N9A-C1B	2.89	133.49	126.59
2	C	401	NAP	C3B-C2B-C1B	-2.75	97.72	102.89
2	B	401	NAP	C6N-N1N-C2N	-2.70	119.52	121.97
2	A	401	NAP	C6N-N1N-C2N	-2.53	119.67	121.97
2	C	401	NAP	N9A-C8A-N7A	2.48	117.31	113.91
2	C	401	NAP	C6N-N1N-C2N	-2.37	119.81	121.97
2	C	401	NAP	C5A-N7A-C8A	-2.34	100.17	103.51
2	A	401	NAP	O2B-P2B-O1X	-2.32	100.44	109.39
2	C	401	NAP	O2A-PA-O5B	2.29	118.38	107.75
2	C	401	NAP	C3N-C7N-N7N	2.24	120.44	117.75
2	C	401	NAP	O2D-C2D-C3D	2.18	118.86	111.82
2	C	401	NAP	C1B-N9A-C8A	-2.10	122.40	127.14
2	C	401	NAP	O7N-C7N-N7N	-2.01	119.73	122.58

There are no chirality outliers.

All (29) torsion outliers are listed below:

Mol	Chain	Res	Type	Atoms
2	A	401	NAP	C2B-O2B-P2B-O1X
2	A	401	NAP	O4D-C1D-N1N-C2N
2	A	401	NAP	O4D-C1D-N1N-C6N
2	B	401	NAP	C5D-O5D-PN-O2N

*Continued on next page...*

*Continued from previous page...*

Mol	Chain	Res	Type	Atoms
2	B	401	NAP	O4D-C1D-N1N-C2N
2	B	401	NAP	O4D-C1D-N1N-C6N
2	B	401	NAP	C2D-C1D-N1N-C2N
2	C	401	NAP	C2B-O2B-P2B-O1X
2	C	401	NAP	O4D-C1D-N1N-C2N
2	C	401	NAP	O4D-C1D-N1N-C6N
2	C	401	NAP	C4B-C5B-O5B-PA
2	C	401	NAP	C3B-C2B-O2B-P2B
2	C	401	NAP	C1B-C2B-O2B-P2B
2	B	401	NAP	C5D-O5D-PN-O3
2	C	401	NAP	O4B-C4B-C5B-O5B
2	C	401	NAP	O4B-C1B-N9A-C8A
2	B	401	NAP	C2B-O2B-P2B-O1X
2	C	401	NAP	C2B-C1B-N9A-C4A
2	A	401	NAP	C2B-O2B-P2B-O2X
2	A	401	NAP	C5D-O5D-PN-O3
2	B	401	NAP	C2B-O2B-P2B-O2X
2	B	401	NAP	C2B-O2B-P2B-O3X
2	C	401	NAP	C2B-O2B-P2B-O2X
2	C	401	NAP	C2D-C1D-N1N-C2N
2	C	401	NAP	C2D-C1D-N1N-C6N
2	A	401	NAP	O4B-C4B-C5B-O5B
2	B	401	NAP	O4B-C4B-C5B-O5B
2	C	401	NAP	C2B-C1B-N9A-C8A
2	B	401	NAP	C5D-O5D-PN-O1N

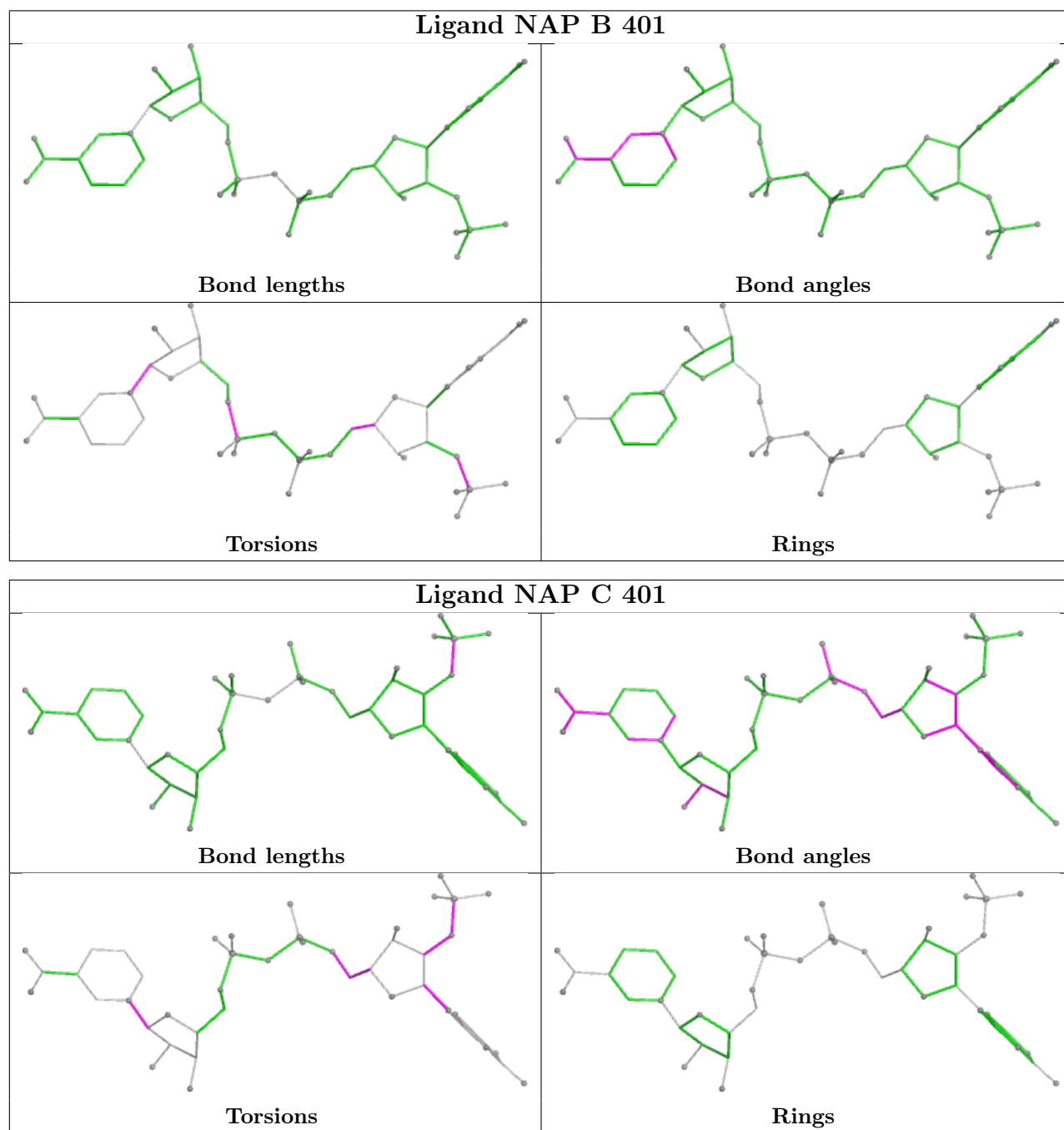
There are no ring outliers.

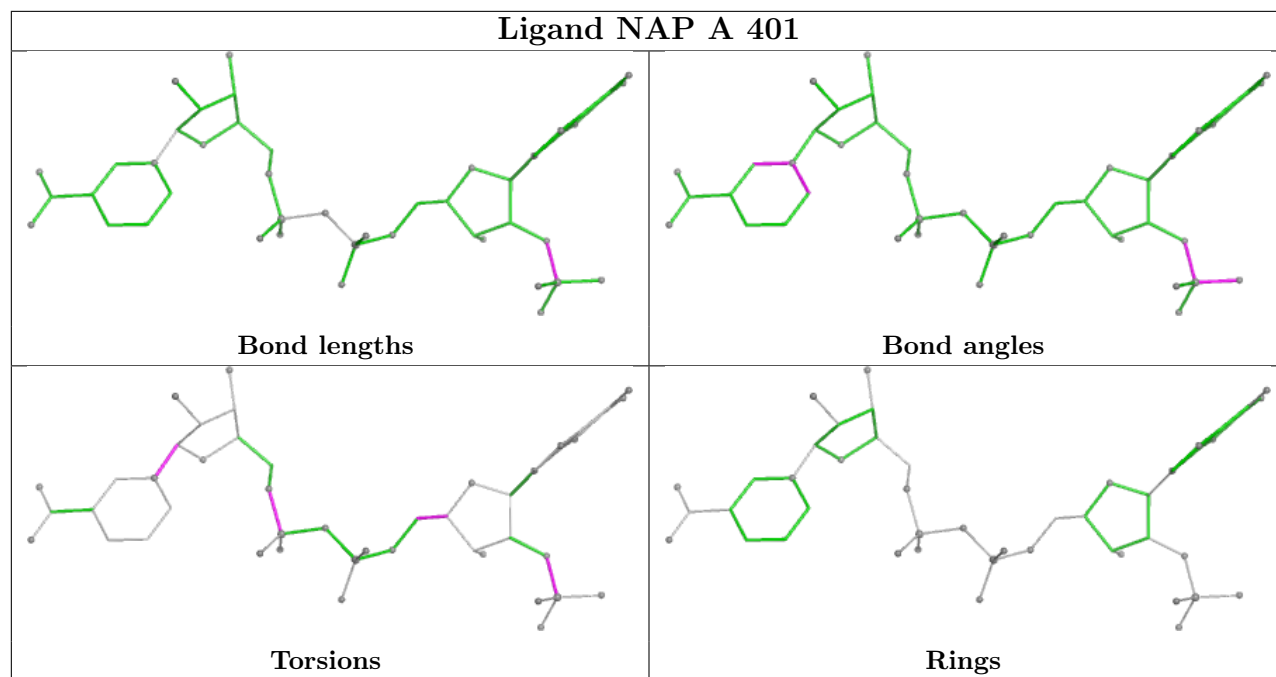
1 monomer is involved in 4 short contacts:

Mol	Chain	Res	Type	Clashes	Symm-Clashes
2	C	401	NAP	4	0

The following is a two-dimensional graphical depiction of Mogul quality analysis of bond lengths, bond angles, torsion angles, and ring geometry for all instances of the Ligand of Interest. In addition, ligands with molecular weight > 250 and outliers as shown on the validation Tables will also be included. For torsion angles, if less than 5% of the Mogul distribution of torsion angles is within 10 degrees of the torsion angle in question, then that torsion angle is considered an outlier. Any bond that is central to one or more torsion angles identified as an outlier by Mogul will be highlighted in the graph. For rings, the root-mean-square deviation (RMSD) between the ring in question and similar rings identified by Mogul is calculated over all ring torsion angles. If the average RMSD is greater than 60 degrees and the minimal RMSD between the ring in question and any Mogul-identified rings is also greater than 60 degrees, then that ring is considered an outlier.

The outliers are highlighted in purple. The color gray indicates Mogul did not find sufficient equivalents in the CSD to analyse the geometry.





## 5.7 Other polymers [i](#)

There are no such residues in this entry.

## 5.8 Polymer linkage issues [i](#)

There are no chain breaks in this entry.

## 6 Fit of model and data ⓘ

### 6.1 Protein, DNA and RNA chains ⓘ

In the following table, the column labelled ‘#RSRZ> 2’ contains the number (and percentage) of RSRZ outliers, followed by percent RSRZ outliers for the chain as percentile scores relative to all X-ray entries and entries of similar resolution. The OWAB column contains the minimum, median, 95<sup>th</sup> percentile and maximum values of the occupancy-weighted average B-factor per residue. The column labelled ‘Q< 0.9’ lists the number of (and percentage) of residues with an average occupancy less than 0.9.

Mol	Chain	Analysed	<RSRZ>	#RSRZ>2	OWAB(Å <sup>2</sup> )	Q<0.9
1	A	307/310 (99%)	-0.40	4 (1%) 75 80	9, 21, 39, 60	1 (0%)
1	B	306/310 (98%)	-0.24	4 (1%) 75 80	9, 23, 44, 78	2 (0%)
1	C	307/310 (99%)	1.18	50 (16%) 4 5	23, 47, 77, 93	0
All	All	920/930 (98%)	0.18	58 (6%) 26 29	9, 28, 63, 93	3 (0%)

All (58) RSRZ outliers are listed below:

Mol	Chain	Res	Type	RSRZ
1	C	240	LEU	4.3
1	C	201	ILE	4.1
1	C	243	LEU	4.0
1	C	230	SER	3.9
1	C	236	ILE	3.7
1	C	203	ALA	3.5
1	C	239	THR	3.5
1	A	169	GLU	3.3
1	C	310	VAL	3.2
1	B	123	HIS	3.0
1	C	223	LEU	3.0
1	C	278	ALA	3.0
1	C	121	HIS	3.0
1	C	282	ILE	3.0
1	C	287	GLY	3.0
1	C	176	ASP	2.9
1	C	296	LYS	2.9
1	C	177	LYS	2.8
1	C	232	TRP	2.7
1	C	231	LEU	2.7
1	C	169	GLU	2.7
1	C	302	VAL	2.7
1	C	228	ILE	2.6

*Continued on next page...*



*Continued from previous page...*

Mol	Chain	Res	Type	RSRZ
1	C	207	PRO	2.6
1	C	284	PRO	2.6
1	A	57	TYR	2.6
1	C	51	ILE	2.6
1	C	237	GLY	2.5
1	C	167	GLN	2.5
1	C	277	SER	2.5
1	C	175	ARG	2.4
1	C	79	VAL	2.4
1	C	229	VAL	2.4
1	C	290	ALA	2.4
1	A	121[A]	HIS	2.4
1	B	256	GLU	2.3
1	C	4	SER	2.3
1	C	299	TYR	2.3
1	C	204	VAL	2.3
1	C	73	LEU	2.2
1	B	177	LYS	2.2
1	C	102	LYS	2.2
1	B	168	LEU	2.2
1	C	105	GLY	2.2
1	C	294	TYR	2.2
1	C	298	LYS	2.2
1	C	179	VAL	2.1
1	C	234	GLU	2.1
1	C	220	ALA	2.1
1	C	63	PHE	2.1
1	C	34	PHE	2.1
1	A	244	TYR	2.1
1	C	107	ILE	2.1
1	C	22	LEU	2.0
1	C	205	ASP	2.0
1	C	178	VAL	2.0
1	C	297	VAL	2.0
1	C	242	LYS	2.0

## 6.2 Non-standard residues in protein, DNA, RNA chains ⓘ

There are no non-standard protein/DNA/RNA residues in this entry.

## 6.3 Carbohydrates [i](#)

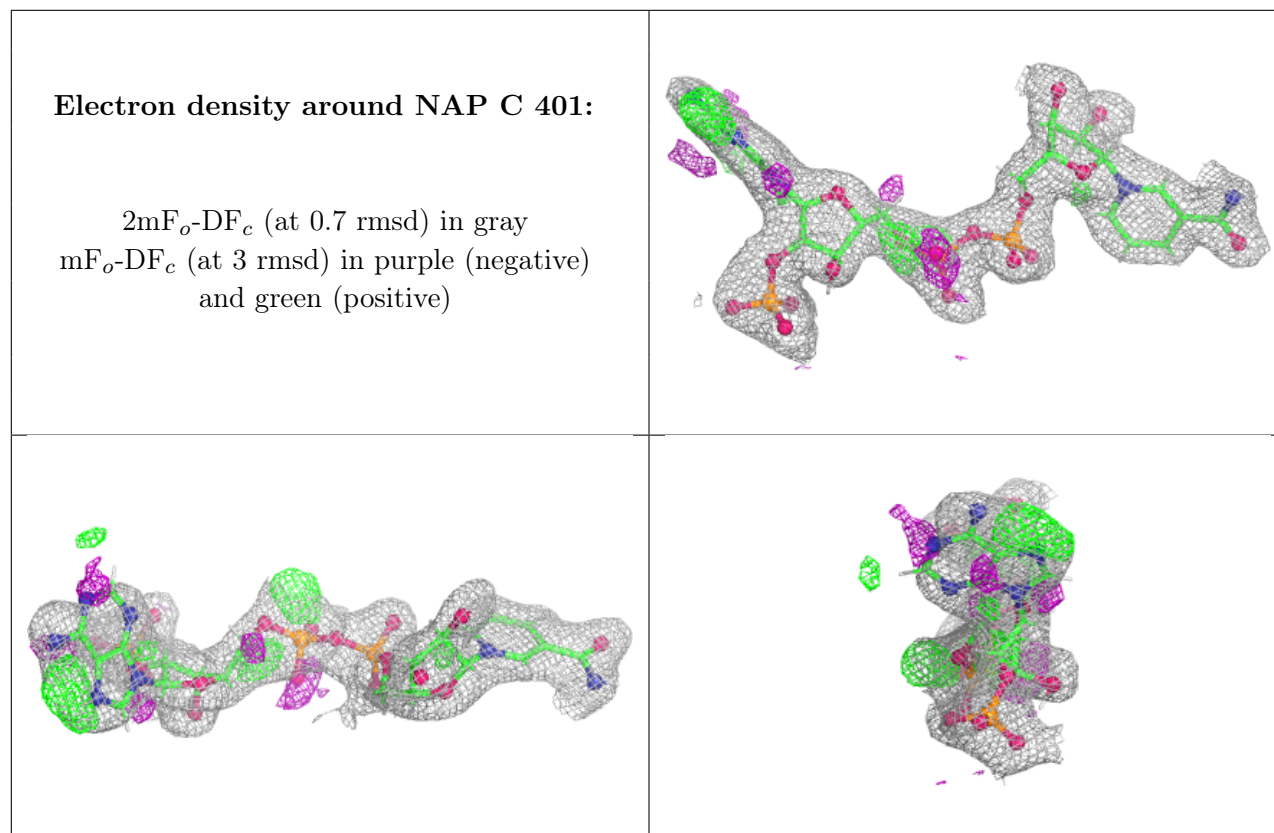
There are no oligosaccharides in this entry.

## 6.4 Ligands [i](#)

In the following table, the Atoms column lists the number of modelled atoms in the group and the number defined in the chemical component dictionary. The B-factors column lists the minimum, median, 95<sup>th</sup> percentile and maximum values of B factors of atoms in the group. The column labelled 'Q< 0.9' lists the number of atoms with occupancy less than 0.9.

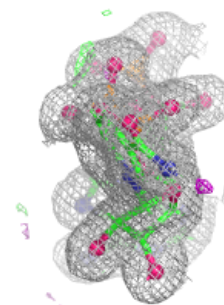
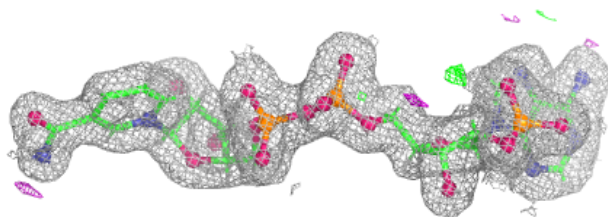
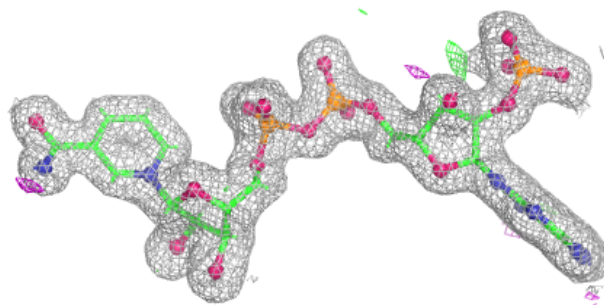
Mol	Type	Chain	Res	Atoms	RSCC	RSR	B-factors( $\text{\AA}^2$ )	Q<0.9
2	NAP	C	401	48/48	0.93	0.10	20,35,50,61	3
2	NAP	B	401	48/48	0.99	0.04	14,18,22,27	3
2	NAP	A	401	48/48	0.99	0.04	12,14,20,21	3

The following is a graphical depiction of the model fit to experimental electron density of all instances of the Ligand of Interest. In addition, ligands with molecular weight > 250 and outliers as shown on the geometry validation Tables will also be included. Each fit is shown from different orientation to approximate a three-dimensional view.

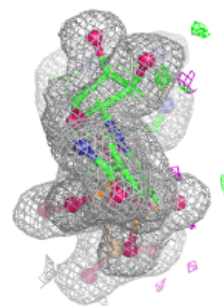
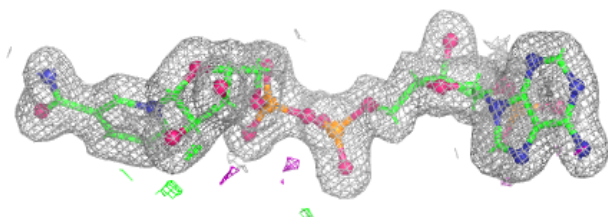
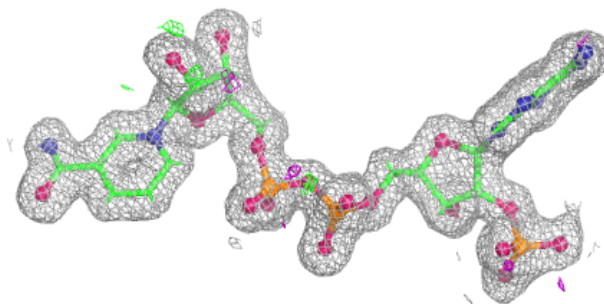


**Electron density around NAP B 401:**

$2mF_o-DF_c$  (at 0.7 rmsd) in gray  
 $mF_o-DF_c$  (at 3 rmsd) in purple (negative)  
and green (positive)

**Electron density around NAP A 401:**

$2mF_o-DF_c$  (at 0.7 rmsd) in gray  
 $mF_o-DF_c$  (at 3 rmsd) in purple (negative)  
and green (positive)



## 6.5 Other polymers [i](#)

There are no such residues in this entry.