



# Full wwPDB X-ray Structure Validation Report

Aug 22, 2020 – 11:14 AM BST

PDB ID : 6R3P  
Title : Crystal structure of human DMC1 ATPase domain  
Authors : Duncce, J.M.; Davies, O.R.  
Deposited on : 2019-03-20  
Resolution : 2.05 Å(reported)

This is a Full wwPDB X-ray Structure Validation Report for a publicly released PDB entry.

We welcome your comments at [validation@mail.wwpdb.org](mailto:validation@mail.wwpdb.org)

A user guide is available at

<https://www.wwpdb.org/validation/2017/XrayValidationReportHelp>

with specific help available everywhere you see the  symbol.

---

The following versions of software and data (see [references](#) ) were used in the production of this report:

MolProbity : 4.02b-467  
Mogul : 1.8.5 (274361), CSD as541be (2020)  
Xtriage (Phenix) : 1.13  
EDS : 2.13.1  
buster-report : 1.1.7 (2018)  
Percentile statistics : 20191225.v01 (using entries in the PDB archive December 25th 2019)  
Refmac : 5.8.0158  
CCP4 : 7.0.044 (Gargrove)  
Ideal geometry (proteins) : Engh & Huber (2001)  
Ideal geometry (DNA, RNA) : Parkinson et al. (1996)  
Validation Pipeline (wwPDB-VP) : 2.13.1

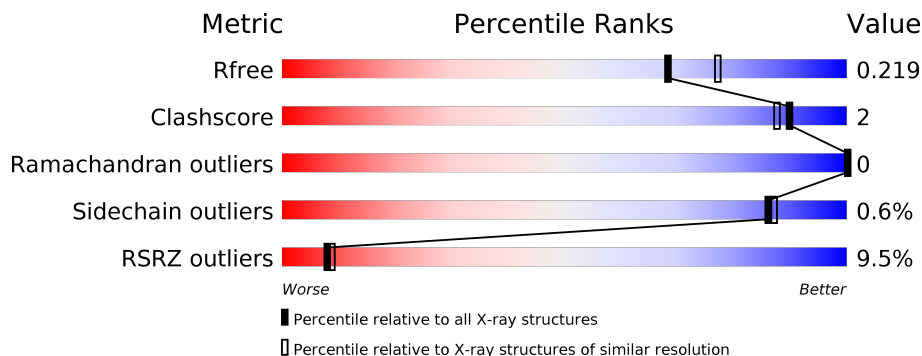
# 1 Overall quality at a glance

The following experimental techniques were used to determine the structure:

*X-RAY DIFFRACTION*

The reported resolution of this entry is 2.05 Å.

Percentile scores (ranging between 0-100) for global validation metrics of the entry are shown in the following graphic. The table shows the number of entries on which the scores are based.



Metric	Whole archive (#Entries)	Similar resolution (#Entries, resolution range(Å))
$R_{free}$	130704	1692 (2.04-2.04)
Clashscore	141614	1773 (2.04-2.04)
Ramachandran outliers	138981	1752 (2.04-2.04)
Sidechain outliers	138945	1752 (2.04-2.04)
RSRZ outliers	127900	1672 (2.04-2.04)

The table below summarises the geometric issues observed across the polymeric chains and their fit to the electron density. The red, orange, yellow and green segments on the lower bar indicate the fraction of residues that contain outliers for  $\geq 3$ , 2, 1 and 0 types of geometric quality criteria respectively. A grey segment represents the fraction of residues that are not modelled. The numeric value for each fraction is indicated below the corresponding segment, with a dot representing fractions  $\leq 5\%$ . The upper red bar (where present) indicates the fraction of residues that have poor fit to the electron density. The numeric value is given above the bar.

Mol	Chain	Length	Quality of chain
1	A	261	
1	B	261	
1	C	261	
1	D	261	

## 2 Entry composition i

There are 7 unique types of molecules in this entry. The entry contains 15935 atoms, of which 7817 are hydrogens and 0 are deuteriums.

In the tables below, the ZeroOcc column contains the number of atoms modelled with zero occupancy, the AltConf column contains the number of residues with at least one atom in alternate conformation and the Trace column contains the number of residues modelled with at most 2 atoms.

- Molecule 1 is a protein called Meiotic recombination protein DMC1/LIM15 homolog.

Mol	Chain	Residues	Atoms						ZeroOcc	AltConf	Trace
			Total	C	H	N	O	S			
1	A	246	3875	1229	1932	336	368	10	0	2	0
1	B	246	3852	1222	1920	335	367	8	0	1	0
1	C	247	3843	1220	1917	334	363	9	0	0	0
1	D	246	3859	1224	1924	335	367	9	0	1	0

There are 12 discrepancies between the modelled and reference sequences:

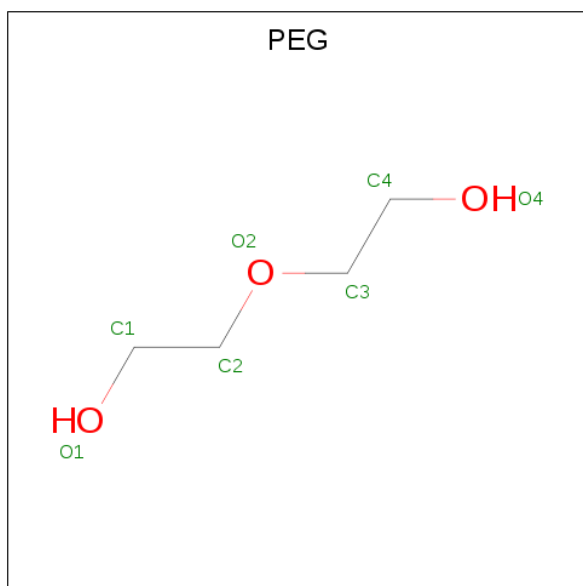
Chain	Residue	Modelled	Actual	Comment	Reference
A	80	GLY	-	expression tag	UNP Q14565
A	81	SER	-	expression tag	UNP Q14565
A	82	MET	-	expression tag	UNP Q14565
B	80	GLY	-	expression tag	UNP Q14565
B	81	SER	-	expression tag	UNP Q14565
B	82	MET	-	expression tag	UNP Q14565
C	80	GLY	-	expression tag	UNP Q14565
C	81	SER	-	expression tag	UNP Q14565
C	82	MET	-	expression tag	UNP Q14565
D	80	GLY	-	expression tag	UNP Q14565
D	81	SER	-	expression tag	UNP Q14565
D	82	MET	-	expression tag	UNP Q14565

- Molecule 2 is 1,2-ETHANEDIOL (three-letter code: EDO) (formula: C<sub>2</sub>H<sub>6</sub>O<sub>2</sub>).



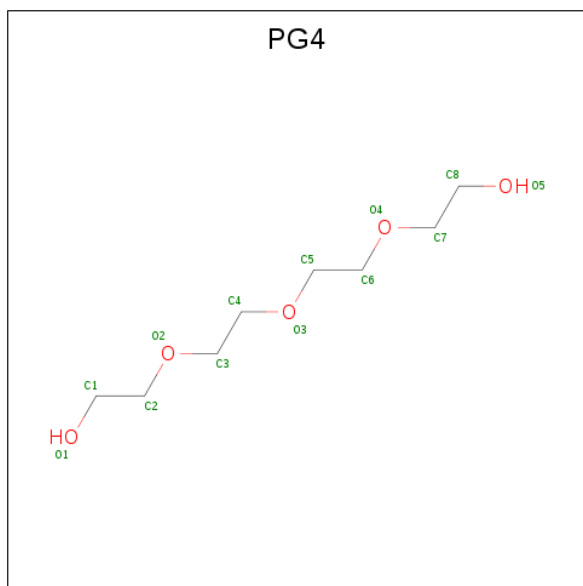
Mol	Chain	Residues	Atoms				ZeroOcc	AltConf
			Total	C	H	O		
2	A	1	10	2	6	2	0	0
2	A	1	10	2	6	2	0	0

- Molecule 3 is DI(HYDROXYETHYL)ETHER (three-letter code: PEG) (formula:  $C_4H_{10}O_3$ ).



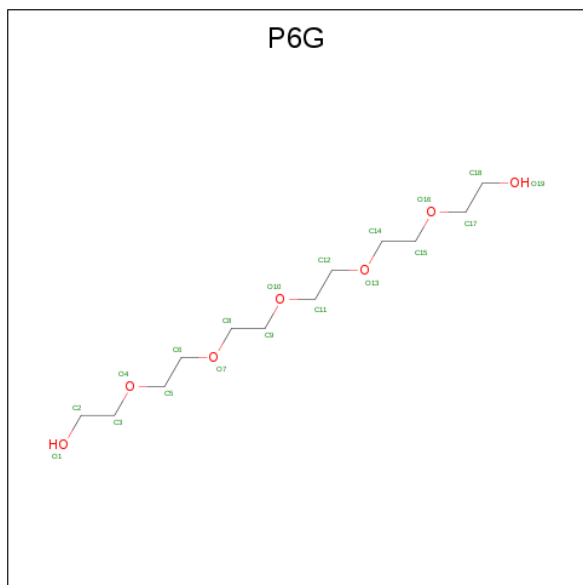
Mol	Chain	Residues	Atoms				ZeroOcc	AltConf
			Total	C	H	O		
3	C	1	17	4	10	3	0	0
3	D	1	17	4	10	3	0	0

- Molecule 4 is TETRAETHYLENE GLYCOL (three-letter code: PG4) (formula:  $C_8H_{18}O_5$ ).



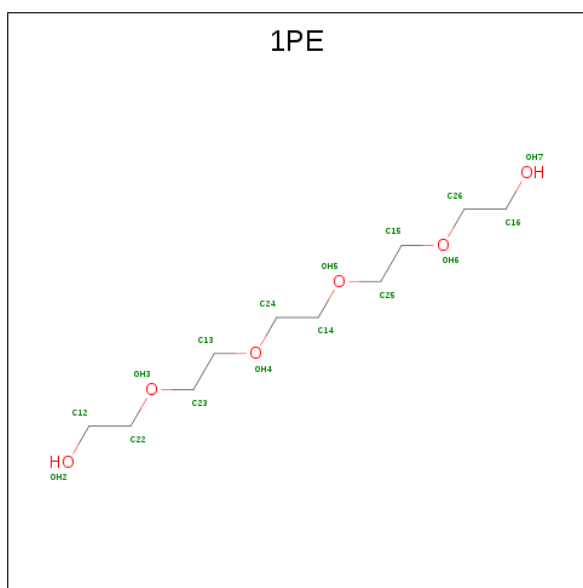
Mol	Chain	Residues	Atoms				ZeroOcc	AltConf
			Total	C	H	O		
4	C	1	31	8	18	5	0	0

- Molecule 5 is HEXAETHYLENE GLYCOL (three-letter code: P6G) (formula:  $C_{12}H_{26}O_7$ ).



Mol	Chain	Residues	Atoms				ZeroOcc	AltConf
			Total	C	H	O		
5	C	1	45	12	26	7	0	0
5	D	1	45	12	26	7	0	0

- Molecule 6 is PENTAETHYLENE GLYCOL (three-letter code: 1PE) (formula: C<sub>10</sub>H<sub>22</sub>O<sub>6</sub>).



Mol	Chain	Residues	Atoms			ZeroOcc	AltConf	
			Total	C	H			O
6	D	1	38	10	22	6	0	0

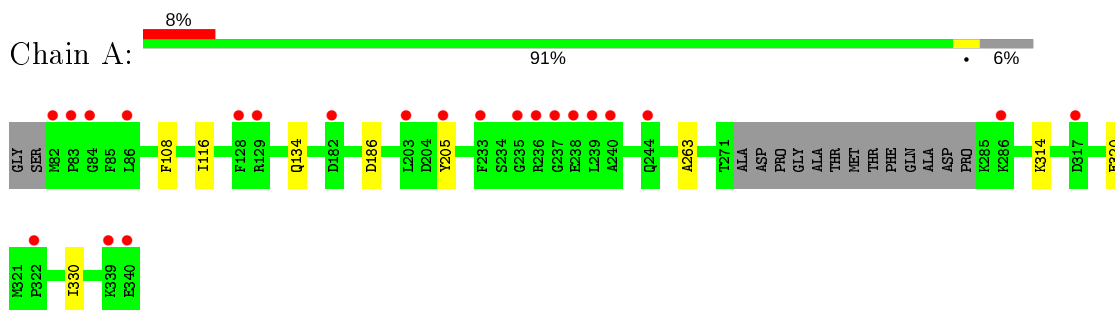
- Molecule 7 is water.

Mol	Chain	Residues	Atoms		ZeroOcc	AltConf
7	A	67	Total	O	0	0
			67	67		
7	B	45	Total	O	0	0
			45	45		
7	C	80	Total	O	0	0
			80	80		
7	D	101	Total	O	0	0
			101	101		

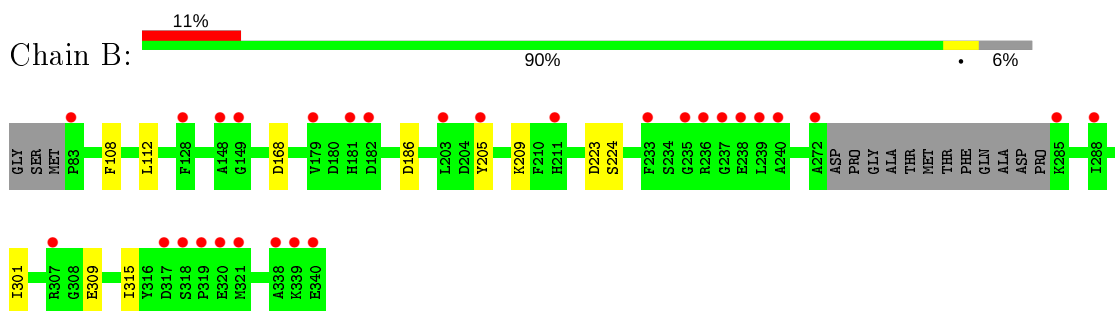
### 3 Residue-property plots [i](#)

These plots are drawn for all protein, RNA, DNA and oligosaccharide chains in the entry. The first graphic for a chain summarises the proportions of the various outlier classes displayed in the second graphic. The second graphic shows the sequence view annotated by issues in geometry and electron density. Residues are color-coded according to the number of geometric quality criteria for which they contain at least one outlier: green = 0, yellow = 1, orange = 2 and red = 3 or more. A red dot above a residue indicates a poor fit to the electron density ( $RSRZ > 2$ ). Stretches of 2 or more consecutive residues without any outlier are shown as a green connector. Residues present in the sample, but not in the model, are shown in grey.

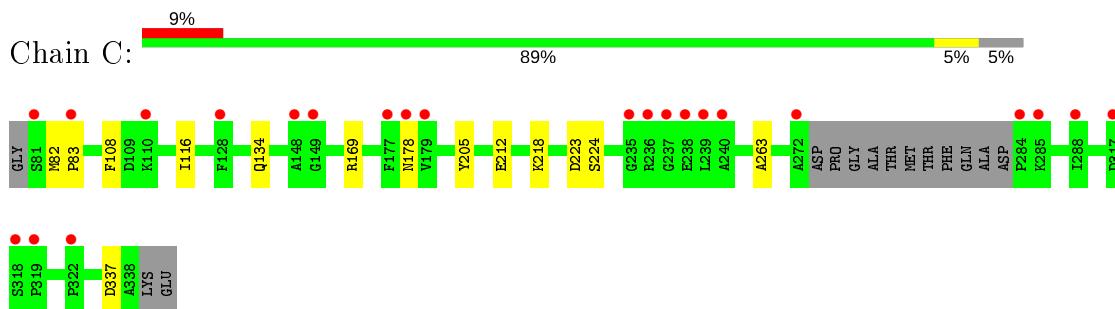
- Molecule 1: Meiotic recombination protein DMC1/LIM15 homolog



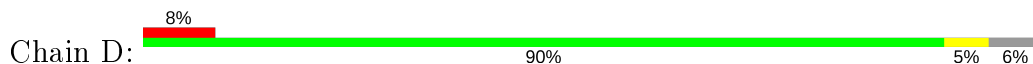
- Molecule 1: Meiotic recombination protein DMC1/LIM15 homolog

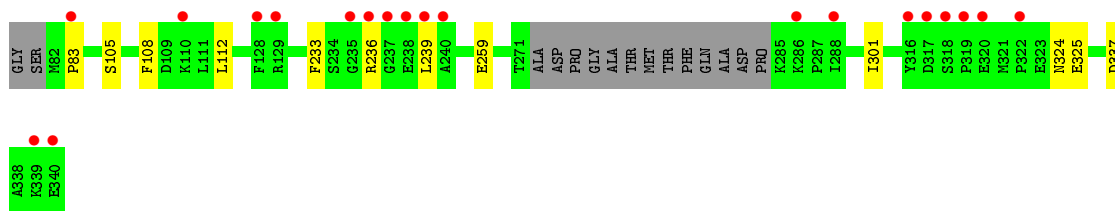


- Molecule 1: Meiotic recombination protein DMC1/LIM15 homolog



- Molecule 1: Meiotic recombination protein DMC1/LIM15 homolog







## 4 Data and refinement statistics

Property	Value	Source
Space group	I 4 2 2	Depositor
Cell constants a, b, c, $\alpha$ , $\beta$ , $\gamma$	174.49Å 174.49Å 179.57Å 90.00° 90.00° 90.00°	Depositor
Resolution (Å)	47.01 – 2.05 47.49 – 2.05	Depositor EDS
% Data completeness (in resolution range)	100.0 (47.01-2.05) 100.0 (47.49-2.05)	Depositor EDS
$R_{merge}$	(Not available)	Depositor
$R_{sym}$	(Not available)	Depositor
$\langle I/\sigma(I) \rangle$ <sup>1</sup>	1.73 (at 2.05Å)	Xtrriage
Refinement program	PHENIX (1.14_3260: ???)	Depositor
R, $R_{free}$	0.194 , 0.219 0.195 , 0.219	Depositor DCC
$R_{free}$ test set	4181 reflections (4.84%)	wwPDB-VP
Wilson B-factor (Å <sup>2</sup> )	40.8	Xtrriage
Anisotropy	0.145	Xtrriage
Bulk solvent $k_{sol}$ (e/Å <sup>3</sup> ), $B_{sol}$ (Å <sup>2</sup> )	0.42 , 55.3	EDS
L-test for twinning <sup>2</sup>	$\langle  L  \rangle = 0.50$ , $\langle L^2 \rangle = 0.33$	Xtrriage
Estimated twinning fraction	0.000 for -l,-k,-h 0.000 for -h,l,k	Xtrriage
$F_o, F_c$ correlation	0.96	EDS
Total number of atoms	15935	wwPDB-VP
Average B, all atoms (Å <sup>2</sup> )	64.0	wwPDB-VP

Xtrriage's analysis on translational NCS is as follows: *The largest off-origin peak in the Patterson function is 12.07% of the height of the origin peak. No significant pseudotranslation is detected.*

<sup>1</sup>Intensities estimated from amplitudes.

<sup>2</sup>Theoretical values of  $\langle |L| \rangle$ ,  $\langle L^2 \rangle$  for acentric reflections are 0.5, 0.333 respectively for untwinned datasets, and 0.375, 0.2 for perfectly twinned datasets.

## 5 Model quality [i](#)

### 5.1 Standard geometry [i](#)

Bond lengths and bond angles in the following residue types are not validated in this section: PG4, PEG, EDO, P6G, 1PE

The Z score for a bond length (or angle) is the number of standard deviations the observed value is removed from the expected value. A bond length (or angle) with  $|Z| > 5$  is considered an outlier worth inspection. RMSZ is the root-mean-square of all Z scores of the bond lengths (or angles).

Mol	Chain	Bond lengths		Bond angles	
		RMSZ	# Z  >5	RMSZ	# Z  >5
1	A	0.25	0/1977	0.43	0/2656
1	B	0.25	0/1966	0.43	0/2642
1	C	0.25	0/1961	0.44	0/2638
1	D	0.26	0/1969	0.44	0/2646
All	All	0.25	0/7873	0.44	0/10582

There are no bond length outliers.

There are no bond angle outliers.

There are no chirality outliers.

There are no planarity outliers.

### 5.2 Too-close contacts [i](#)

In the following table, the Non-H and H(model) columns list the number of non-hydrogen atoms and hydrogen atoms in the chain respectively. The H(added) column lists the number of hydrogen atoms added and optimized by MolProbity. The Clashes column lists the number of clashes within the asymmetric unit, whereas Symm-Clashes lists symmetry related clashes.

Mol	Chain	Non-H	H(model)	H(added)	Clashes	Symm-Clashes
1	A	1943	1932	1929	4	1
1	B	1932	1920	1918	6	1
1	C	1926	1917	1917	10	0
1	D	1935	1924	1921	9	0
2	A	8	12	12	0	0
3	C	7	10	10	0	0
3	D	7	10	10	0	0
4	C	13	18	18	0	0
5	C	19	26	26	0	0

*Continued on next page...*

*Continued from previous page...*

Mol	Chain	Non-H	H(model)	H(added)	Clashes	Symm-Clashes
5	D	19	26	26	0	0
6	D	16	22	22	0	0
7	A	67	0	0	1	0
7	B	45	0	0	3	0
7	C	80	0	0	4	0
7	D	101	0	0	6	0
All	All	8118	7817	7809	28	1

The all-atom clashscore is defined as the number of clashes found per 1000 atoms (including hydrogen atoms). The all-atom clashscore for this structure is 2.

All (28) close contacts within the same asymmetric unit are listed below, sorted by their clash magnitude.

Atom-1	Atom-2	Interatomic distance (Å)	Clash overlap (Å)
1:C:218:LYS:NZ	7:C:502:HOH:O	2.08	0.86
1:D:324:ASN:OD1	7:D:501:HOH:O	1.98	0.80
1:D:337:ASP:OD2	7:D:503:HOH:O	2.01	0.79
1:C:178:ASN:ND2	7:C:504:HOH:O	2.14	0.79
1:D:233:PHE:O	7:D:502:HOH:O	2.00	0.78
1:C:337:ASP:OD1	7:C:501:HOH:O	2.03	0.76
1:D:259:GLU:OE1	7:D:504:HOH:O	2.06	0.73
1:A:186[B]:ASP:OD1	7:A:501:HOH:O	2.07	0.73
1:B:168:ASP:OD1	7:B:401:HOH:O	2.09	0.70
1:B:186[A]:ASP:OD1	7:B:402:HOH:O	2.10	0.69
1:A:314:LYS:NZ	1:A:320:GLU:OE1	2.28	0.67
1:C:212:GLU:OE2	7:C:503:HOH:O	2.12	0.66
1:D:112:LEU:HD21	1:D:301:ILE:HD11	1.77	0.66
1:D:325:GLU:O	7:D:505:HOH:O	2.13	0.66
1:C:134:GLN:OE1	1:C:169:ARG:NH1	2.35	0.60
1:D:105:SER:OG	7:D:503:HOH:O	2.17	0.58
1:B:112:LEU:HD21	1:B:301:ILE:HD11	1.84	0.57
1:B:309:GLU:O	7:B:403:HOH:O	2.17	0.54
1:D:236:ARG:HA	1:D:239:LEU:HD13	1.92	0.50
1:B:315:ILE:N	1:B:315:ILE:HD12	2.26	0.50
1:A:134:GLN:HG2	1:A:330:ILE:HG23	1.95	0.49
1:C:82:MET:HB3	1:C:83:PRO:CD	2.45	0.47
1:C:82:MET:HB3	1:C:83:PRO:HD2	1.99	0.44
1:C:116:ILE:HG22	1:C:263:ALA:HB1	2.00	0.43
1:A:116:ILE:HG22	1:A:263:ALA:HB1	2.01	0.43
1:C:223:ASP:HA	1:C:224:SER:HA	1.84	0.42
1:B:223:ASP:HA	1:B:224:SER:HA	1.84	0.42

*Continued on next page...*

Continued from previous page...

Atom-1	Atom-2	Interatomic distance (Å)	Clash overlap (Å)
1:C:205:TYR:CZ	1:D:83:PRO:HG2	2.56	0.41

All (1) symmetry-related close contacts are listed below. The label for Atom-2 includes the symmetry operator and encoded unit-cell translations to be applied.

Atom-1	Atom-2	Interatomic distance (Å)	Clash overlap (Å)
1:A:205:TYR:OH	1:B:205:TYR:OH[7_556]	2.08	0.12

## 5.3 Torsion angles [i](#)

### 5.3.1 Protein backbone [i](#)

In the following table, the Percentiles column shows the percent Ramachandran outliers of the chain as a percentile score with respect to all X-ray entries followed by that with respect to entries of similar resolution.

The Analysed column shows the number of residues for which the backbone conformation was analysed, and the total number of residues.

Mol	Chain	Analysed	Favoured	Allowed	Outliers	Percentiles	
1	A	244/261 (94%)	243 (100%)	1 (0%)	0	100	100
1	B	243/261 (93%)	238 (98%)	5 (2%)	0	100	100
1	C	243/261 (93%)	242 (100%)	1 (0%)	0	100	100
1	D	243/261 (93%)	241 (99%)	2 (1%)	0	100	100
All	All	973/1044 (93%)	964 (99%)	9 (1%)	0	100	100

There are no Ramachandran outliers to report.

### 5.3.2 Protein sidechains [i](#)

In the following table, the Percentiles column shows the percent sidechain outliers of the chain as a percentile score with respect to all X-ray entries followed by that with respect to entries of similar resolution.

The Analysed column shows the number of residues for which the sidechain conformation was analysed, and the total number of residues.

Mol	Chain	Analysed	Rotameric	Outliers	Percentiles	
1	A	203/211 (96%)	202 (100%)	1 (0%)	88	89
1	B	201/211 (95%)	199 (99%)	2 (1%)	76	75
1	C	201/211 (95%)	200 (100%)	1 (0%)	88	89
1	D	202/211 (96%)	201 (100%)	1 (0%)	88	89
All	All	807/844 (96%)	802 (99%)	5 (1%)	86	87

All (5) residues with a non-rotameric sidechain are listed below:

Mol	Chain	Res	Type
1	A	108	PHE
1	B	108	PHE
1	B	209	LYS
1	C	108	PHE
1	D	108	PHE

Some sidechains can be flipped to improve hydrogen bonding and reduce clashes. There are no such sidechains identified.

### 5.3.3 RNA [i](#)

There are no RNA molecules in this entry.

### 5.4 Non-standard residues in protein, DNA, RNA chains [i](#)

There are no non-standard protein/DNA/RNA residues in this entry.

### 5.5 Carbohydrates [i](#)

There are no monosaccharides in this entry.

### 5.6 Ligand geometry [i](#)

8 ligands are modelled in this entry.

In the following table, the Counts columns list the number of bonds (or angles) for which Mogul statistics could be retrieved, the number of bonds (or angles) that are observed in the model and the number of bonds (or angles) that are defined in the Chemical Component Dictionary. The Link column lists molecule types, if any, to which the group is linked. The Z score for a bond length (or angle) is the number of standard deviations the observed value is removed from the

expected value. A bond length (or angle) with  $|Z| > 2$  is considered an outlier worth inspection. RMSZ is the root-mean-square of all Z scores of the bond lengths (or angles).

Mol	Type	Chain	Res	Link	Bond lengths			Bond angles		
					Counts	RMSZ	# $ Z  > 2$	Counts	RMSZ	# $ Z  > 2$
5	P6G	C	403	-	18,18,18	0.54	0	17,17,17	0.30	0
4	PG4	C	402	-	12,12,12	0.54	0	11,11,11	0.26	0
6	1PE	D	403	-	15,15,15	0.53	0	14,14,14	0.31	0
3	PEG	D	402	-	6,6,6	0.48	0	5,5,5	0.30	0
2	EDO	A	402	-	3,3,3	0.46	0	2,2,2	0.29	0
5	P6G	D	401	-	18,18,18	0.53	0	17,17,17	0.33	0
2	EDO	A	401	-	3,3,3	0.47	0	2,2,2	0.27	0
3	PEG	C	401	-	6,6,6	0.48	0	5,5,5	0.28	0

In the following table, the Chirals column lists the number of chiral outliers, the number of chiral centers analysed, the number of these observed in the model and the number defined in the Chemical Component Dictionary. Similar counts are reported in the Torsion and Rings columns. '-' means no outliers of that kind were identified.

Mol	Type	Chain	Res	Link	Chirals	Torsions	Rings
5	P6G	C	403	-	-	4/16/16/16	-
4	PG4	C	402	-	-	0/10/10/10	-
6	1PE	D	403	-	-	7/13/13/13	-
3	PEG	D	402	-	-	2/4/4/4	-
2	EDO	A	402	-	-	0/1/1/1	-
5	P6G	D	401	-	-	8/16/16/16	-
2	EDO	A	401	-	-	0/1/1/1	-
3	PEG	C	401	-	-	2/4/4/4	-

There are no bond length outliers.

There are no bond angle outliers.

There are no chirality outliers.

All (23) torsion outliers are listed below:

Mol	Chain	Res	Type	Atoms
5	D	401	P6G	O10-C11-C12-O13
6	D	403	1PE	OH7-C16-C26-OH6
6	D	403	1PE	OH5-C14-C24-OH4
5	C	403	P6G	O13-C14-C15-O16
5	D	401	P6G	O4-C5-C6-O7
5	C	403	P6G	O16-C17-C18-O19
3	C	401	PEG	O1-C1-C2-O2

*Continued on next page...*

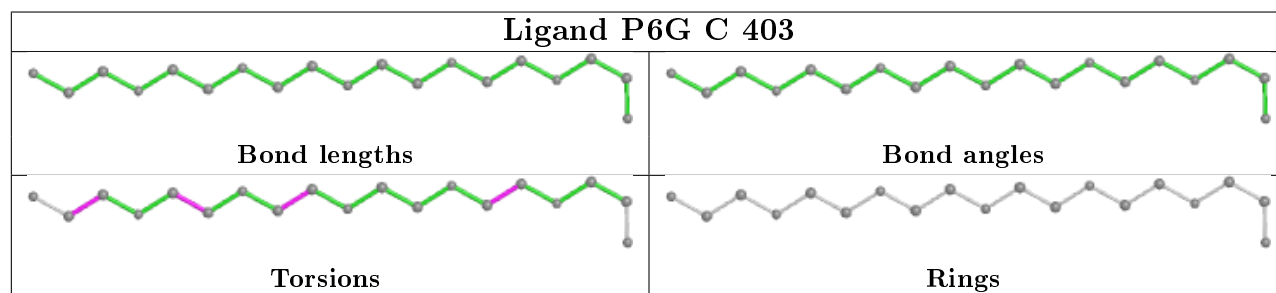
Continued from previous page...

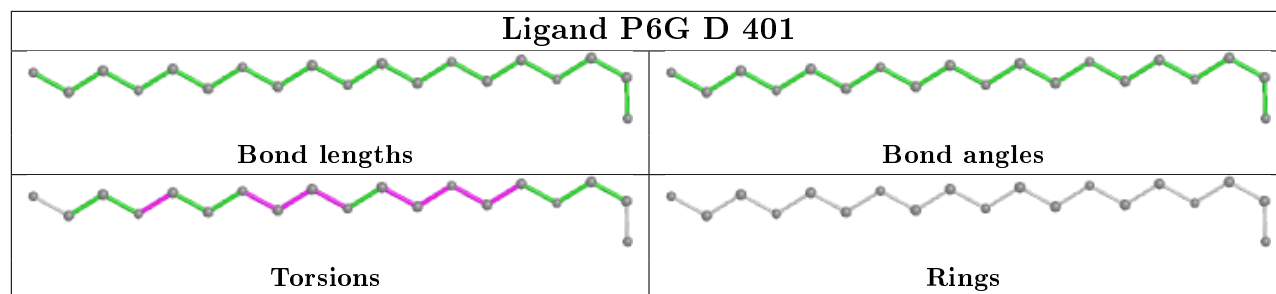
Mol	Chain	Res	Type	Atoms
3	D	402	PEG	O2-C3-C4-O4
5	C	403	P6G	O10-C11-C12-O13
6	D	403	1PE	C15-C25-OH5-C14
6	D	403	1PE	C14-C24-OH4-C13
5	C	403	P6G	O4-C5-C6-O7
3	C	401	PEG	C4-C3-O2-C2
5	D	401	P6G	O7-C8-C9-O10
6	D	403	1PE	C23-C13-OH4-C24
5	D	401	P6G	C12-C11-O10-C9
5	D	401	P6G	C14-C15-O16-C17
5	D	401	P6G	C9-C8-O7-C6
5	D	401	P6G	C5-C6-O7-C8
3	D	402	PEG	C1-C2-O2-C3
5	D	401	P6G	C11-C12-O13-C14
6	D	403	1PE	OH2-C12-C22-OH3
6	D	403	1PE	OH4-C13-C23-OH3

There are no ring outliers.

No monomer is involved in short contacts.

The following is a two-dimensional graphical depiction of Mogul quality analysis of bond lengths, bond angles, torsion angles, and ring geometry for all instances of the Ligand of Interest. In addition, ligands with molecular weight > 250 and outliers as shown on the validation Tables will also be included. For torsion angles, if less than 5% of the Mogul distribution of torsion angles is within 10 degrees of the torsion angle in question, then that torsion angle is considered an outlier. Any bond that is central to one or more torsion angles identified as an outlier by Mogul will be highlighted in the graph. For rings, the root-mean-square deviation (RMSD) between the ring in question and similar rings identified by Mogul is calculated over all ring torsion angles. If the average RMSD is greater than 60 degrees and the minimal RMSD between the ring in question and any Mogul-identified rings is also greater than 60 degrees, then that ring is considered an outlier. The outliers are highlighted in purple. The color gray indicates Mogul did not find sufficient equivalents in the CSD to analyse the geometry.





## 5.7 Other polymers [i](#)

There are no such residues in this entry.

## 5.8 Polymer linkage issues [i](#)

There are no chain breaks in this entry.



## 6 Fit of model and data

### 6.1 Protein, DNA and RNA chains

In the following table, the column labelled ‘#RSRZ> 2’ contains the number (and percentage) of RSRZ outliers, followed by percent RSRZ outliers for the chain as percentile scores relative to all X-ray entries and entries of similar resolution. The OWAB column contains the minimum, median, 95<sup>th</sup> percentile and maximum values of the occupancy-weighted average B-factor per residue. The column labelled ‘Q< 0.9’ lists the number of (and percentage) of residues with an average occupancy less than 0.9.

Mol	Chain	Analysed	<RSRZ>	#RSRZ>2	OWAB(Å <sup>2</sup> )	Q<0.9
1	A	246/261 (94%)	0.69	22 (8%) <b>9</b> <b>10</b>	32, 51, 115, 145	0
1	B	246/261 (94%)	0.94	29 (11%) <b>4</b> <b>4</b>	36, 59, 119, 158	0
1	C	247/261 (94%)	0.78	23 (9%) <b>8</b> <b>9</b>	29, 50, 110, 145	0
1	D	246/261 (94%)	0.73	20 (8%) <b>12</b> <b>12</b>	28, 45, 105, 147	0
All	All	985/1044 (94%)	0.78	94 (9%) <b>8</b> <b>9</b>	28, 52, 114, 158	0

All (94) RSRZ outliers are listed below:

Mol	Chain	Res	Type	RSRZ
1	D	236	ARG	9.0
1	B	236	ARG	8.4
1	B	340	GLU	8.3
1	C	236	ARG	7.7
1	B	339	LYS	7.6
1	A	236	ARG	6.7
1	C	128	PHE	6.4
1	B	128	PHE	6.3
1	A	82	MET	5.5
1	D	235	GLY	5.4
1	B	239	LEU	5.3
1	D	340	GLU	5.1
1	C	239	LEU	4.9
1	A	128	PHE	4.8
1	A	239	LEU	4.6
1	C	237	GLY	4.6
1	C	235	GLY	4.6
1	C	284	PRO	4.4
1	B	148	ALA	4.4
1	C	238	GLU	4.4
1	C	285	LYS	4.3

*Continued on next page...*

*Continued from previous page...*

<b>Mol</b>	<b>Chain</b>	<b>Res</b>	<b>Type</b>	<b>RSRZ</b>
1	B	317	ASP	4.1
1	A	340	GLU	4.1
1	B	285	LYS	4.1
1	A	237	GLY	4.1
1	B	237	GLY	3.9
1	A	238	GLU	3.9
1	B	238	GLU	3.9
1	D	339	LYS	3.7
1	D	239	LEU	3.6
1	C	81	SER	3.6
1	D	322	PRO	3.6
1	A	240	ALA	3.6
1	B	288	ILE	3.5
1	B	272	ALA	3.4
1	B	240	ALA	3.4
1	D	319	PRO	3.4
1	A	129	ARG	3.4
1	C	288	ILE	3.3
1	D	318	SER	3.2
1	A	233	PHE	3.2
1	B	149	GLY	3.1
1	A	317	ASP	3.1
1	B	181	HIS	3.1
1	C	179	VAL	3.1
1	B	307	ARG	3.1
1	D	237	GLY	3.1
1	B	318	SER	3.0
1	D	316	TYR	3.0
1	C	322	PRO	3.0
1	C	240	ALA	3.0
1	C	272	ALA	3.0
1	A	339	LYS	3.0
1	A	205	TYR	2.9
1	A	235	GLY	2.9
1	D	238	GLU	2.9
1	B	205	TYR	2.9
1	B	235	GLY	2.8
1	D	128	PHE	2.8
1	B	83	PRO	2.8
1	C	177	PHE	2.8
1	C	83	PRO	2.8
1	D	129	ARG	2.8

*Continued on next page...*

*Continued from previous page...*

Mol	Chain	Res	Type	RSRZ
1	A	83	PRO	2.7
1	B	320	GLU	2.7
1	D	286	LYS	2.7
1	D	240	ALA	2.7
1	D	288	ILE	2.7
1	C	318	SER	2.7
1	A	244	GLN	2.7
1	A	182	ASP	2.6
1	B	182	ASP	2.6
1	A	203	LEU	2.6
1	B	319	PRO	2.5
1	A	322	PRO	2.5
1	B	233	PHE	2.4
1	A	86	LEU	2.4
1	B	179	VAL	2.3
1	C	319	PRO	2.3
1	B	203	LEU	2.2
1	B	211	HIS	2.2
1	C	149	GLY	2.2
1	C	178	ASN	2.2
1	A	84	GLY	2.2
1	D	83	PRO	2.2
1	D	317	ASP	2.2
1	C	110	LYS	2.2
1	B	321	MET	2.2
1	D	320	GLU	2.1
1	A	286	LYS	2.1
1	C	148	ALA	2.1
1	D	110	LYS	2.1
1	B	338	ALA	2.0
1	C	317	ASP	2.0

## 6.2 Non-standard residues in protein, DNA, RNA chains [i](#)

There are no non-standard protein/DNA/RNA residues in this entry.

## 6.3 Carbohydrates [i](#)

There are no monosaccharides in this entry.

## 6.4 Ligands

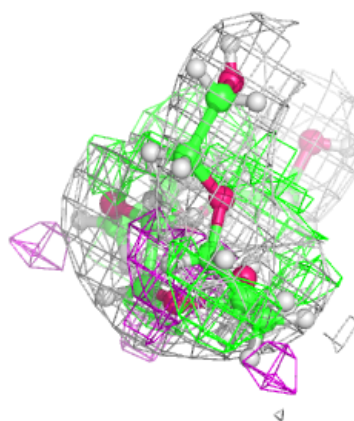
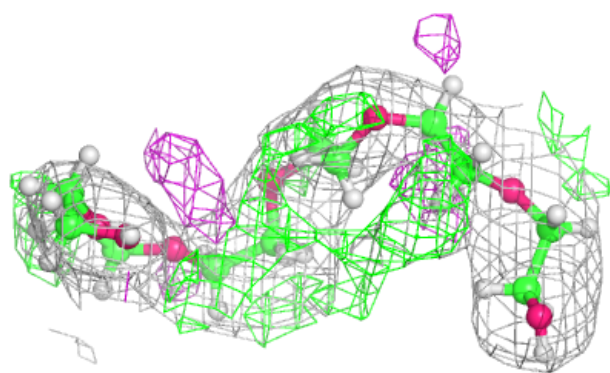
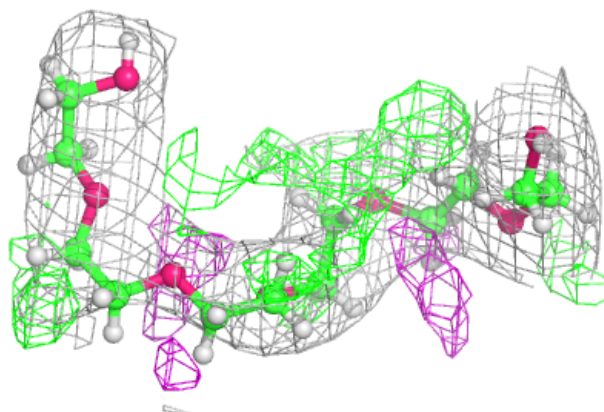
In the following table, the Atoms column lists the number of modelled atoms in the group and the number defined in the chemical component dictionary. The B-factors column lists the minimum, median, 95<sup>th</sup> percentile and maximum values of B factors of atoms in the group. The column labelled 'Q< 0.9' lists the number of atoms with occupancy less than 0.9.

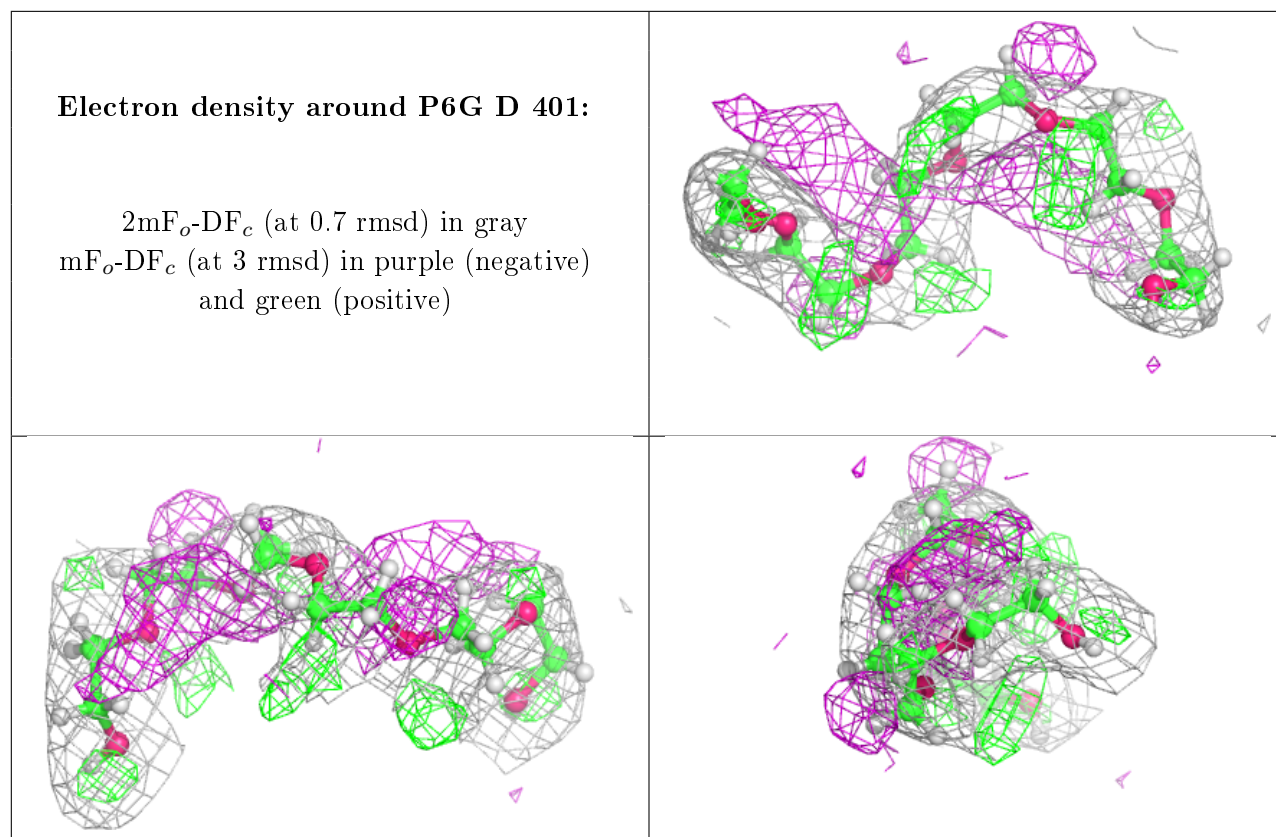
Mol	Type	Chain	Res	Atoms	RSCC	RSR	B-factors(Å <sup>2</sup> )	Q<0.9
5	P6G	C	403	19/19	0.69	0.31	110,132,136,137	45
5	P6G	D	401	19/19	0.70	0.23	100,120,123,123	45
4	PG4	C	402	13/13	0.73	0.28	73,88,97,97	0
2	EDO	A	402	4/4	0.74	0.22	70,84,86,87	0
6	1PE	D	403	16/16	0.77	0.26	79,96,110,111	0
2	EDO	A	401	4/4	0.84	0.27	77,92,92,93	0
3	PEG	D	402	7/7	0.90	0.20	63,77,81,82	0
3	PEG	C	401	7/7	0.93	0.22	69,83,85,87	0

The following is a graphical depiction of the model fit to experimental electron density of all instances of the Ligand of Interest. In addition, ligands with molecular weight > 250 and outliers as shown on the geometry validation Tables will also be included. Each fit is shown from different orientation to approximate a three-dimensional view.

**Electron density around P6G C 403:**

$2mF_o-DF_c$  (at 0.7 rmsd) in gray  
 $mF_o-DF_c$  (at 3 rmsd) in purple (negative)  
and green (positive)





## 6.5 Other polymers [i](#)

There are no such residues in this entry.