



# wwPDB X-ray Structure Validation Summary Report ⓘ

Jun 16, 2024 – 10:10 PM EDT

PDB ID : 3R1Z  
Title : Crystal structure of NYSGRC enolase target 200555, a putative dipeptide epimerase from *Francisella philomiragia* : Complex with L-Ala-L-Glu and L-Ala-D-Glu  
Authors : Vetting, M.W.; Hillerich, B.; Seidel, R.D.; Zencheck, W.D.; Toro, R.; Imker, H.J.; Gerlt, J.A.; Almo, S.C.; New York Structural Genomics Research Consortium (NYSGRC)  
Deposited on : 2011-03-11  
Resolution : 1.90 Å(reported)

This is a wwPDB X-ray Structure Validation Summary Report for a publicly released PDB entry.

We welcome your comments at [validation@mail.wwpdb.org](mailto:validation@mail.wwpdb.org)

A user guide is available at

<https://www.wwpdb.org/validation/2017/XrayValidationReportHelp>

with specific help available everywhere you see the ⓘ symbol.

The types of validation reports are described at

<http://www.wwpdb.org/validation/2017/FAQs#types>.

---

The following versions of software and data (see [references ⓘ](#)) were used in the production of this report:

MolProbity : 4.02b-467  
Mogul : 2022.3.0, CSD as543be (2022)  
Xtriage (Phenix) : 1.20.1  
EDS : 2.37.1  
Percentile statistics : 20191225.v01 (using entries in the PDB archive December 25th 2019)  
Refmac : 5.8.0158  
CCP4 : 7.0.044 (Gargrove)  
Ideal geometry (proteins) : Engh & Huber (2001)  
Ideal geometry (DNA, RNA) : Parkinson et al. (1996)

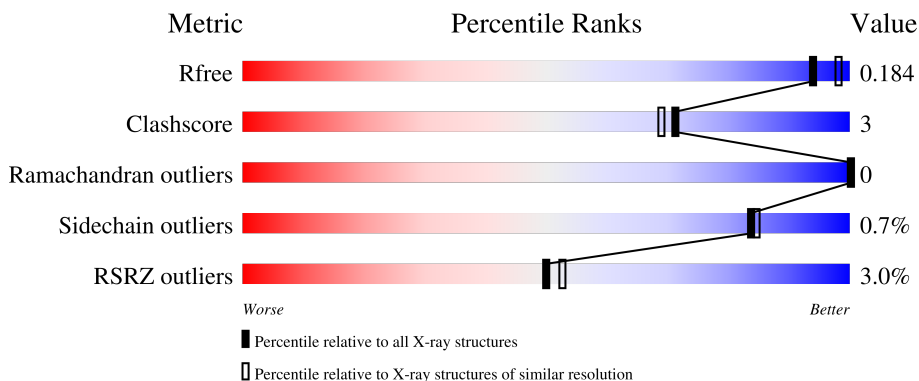
# 1 Overall quality at a glance

The following experimental techniques were used to determine the structure:

*X-RAY DIFFRACTION*


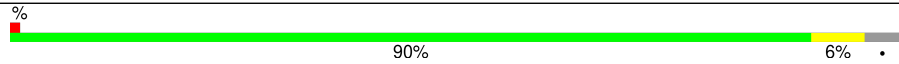
The reported resolution of this entry is 1.90 Å.

Percentile scores (ranging between 0-100) for global validation metrics of the entry are shown in the following graphic. The table shows the number of entries on which the scores are based.



Metric	Whole archive (#Entries)	Similar resolution (#Entries, resolution range(Å))
$R_{free}$	130704	6207 (1.90-1.90)
Clashscore	141614	6847 (1.90-1.90)
Ramachandran outliers	138981	6760 (1.90-1.90)
Sidechain outliers	138945	6760 (1.90-1.90)
RSRZ outliers	127900	6082 (1.90-1.90)

The table below summarises the geometric issues observed across the polymeric chains and their fit to the electron density. The red, orange, yellow and green segments of the lower bar indicate the fraction of residues that contain outliers for  $\geq 3$ , 2, 1 and 0 types of geometric quality criteria respectively. A grey segment represents the fraction of residues that are not modelled. The numeric value for each fraction is indicated below the corresponding segment, with a dot representing fractions  $\leq 5\%$ . The upper red bar (where present) indicates the fraction of residues that have poor fit to the electron density. The numeric value is given above the bar.

Mol	Chain	Length	Quality of chain
1	A	379	 5% 89% 6%
1	B	379	 0% 90% 6%

## 2 Entry composition [i](#)

There are 7 unique types of molecules in this entry. The entry contains 6404 atoms, of which 0 are hydrogens and 0 are deuteriums.

In the tables below, the ZeroOcc column contains the number of atoms modelled with zero occupancy, the AltConf column contains the number of residues with at least one atom in alternate conformation and the Trace column contains the number of residues modelled with at most 2 atoms.

- Molecule 1 is a protein called Enzyme of enolase superfamily.

Mol	Chain	Residues	Atoms						ZeroOcc	AltConf	Trace
			Total	C	N	O	S	Se			
1	A	362	2802	1793	454	543	4	8	0	1	0
1	B	364	2810	1796	456	546	4	8	0	0	0

There are 48 discrepancies between the modelled and reference sequences:

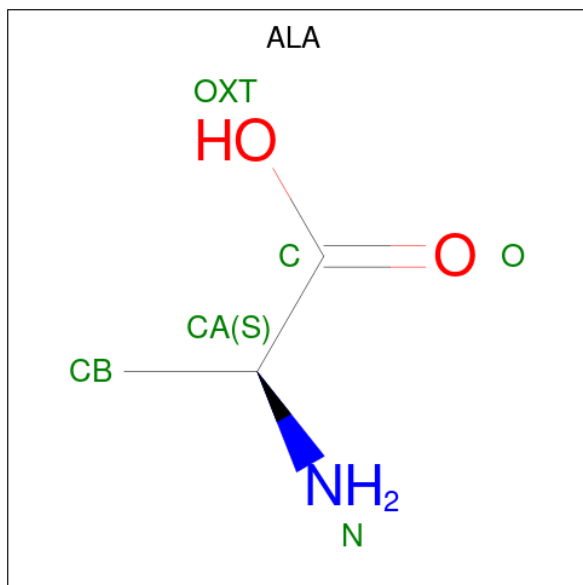
Chain	Residue	Modelled	Actual	Comment	Reference
A	1	MSE	-	EXPRESSION TAG	UNP B0TZW0
A	2	VAL	-	EXPRESSION TAG	UNP B0TZW0
A	358	ALA	-	EXPRESSION TAG	UNP B0TZW0
A	359	GLU	-	EXPRESSION TAG	UNP B0TZW0
A	360	ASN	-	EXPRESSION TAG	UNP B0TZW0
A	361	LEU	-	EXPRESSION TAG	UNP B0TZW0
A	362	TYR	-	EXPRESSION TAG	UNP B0TZW0
A	363	PHE	-	EXPRESSION TAG	UNP B0TZW0
A	364	GLN	-	EXPRESSION TAG	UNP B0TZW0
A	365	SER	-	EXPRESSION TAG	UNP B0TZW0
A	366	HIS	-	EXPRESSION TAG	UNP B0TZW0
A	367	HIS	-	EXPRESSION TAG	UNP B0TZW0
A	368	HIS	-	EXPRESSION TAG	UNP B0TZW0
A	369	HIS	-	EXPRESSION TAG	UNP B0TZW0
A	370	HIS	-	EXPRESSION TAG	UNP B0TZW0
A	371	HIS	-	EXPRESSION TAG	UNP B0TZW0
A	372	TRP	-	EXPRESSION TAG	UNP B0TZW0
A	373	SER	-	EXPRESSION TAG	UNP B0TZW0
A	374	HIS	-	EXPRESSION TAG	UNP B0TZW0
A	375	PRO	-	EXPRESSION TAG	UNP B0TZW0
A	376	GLN	-	EXPRESSION TAG	UNP B0TZW0
A	377	PHE	-	EXPRESSION TAG	UNP B0TZW0
A	378	GLU	-	EXPRESSION TAG	UNP B0TZW0
A	379	LYS	-	EXPRESSION TAG	UNP B0TZW0
B	1	MSE	-	EXPRESSION TAG	UNP B0TZW0

*Continued on next page...*

Continued from previous page...

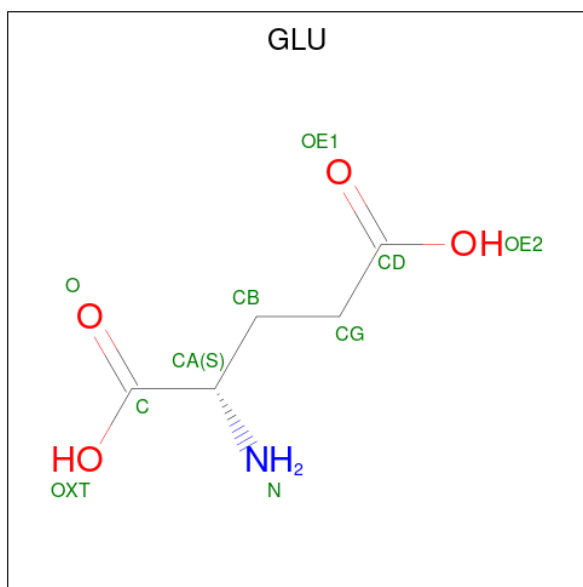
Chain	Residue	Modelled	Actual	Comment	Reference
B	2	VAL	-	EXPRESSION TAG	UNP B0TZW0
B	358	ALA	-	EXPRESSION TAG	UNP B0TZW0
B	359	GLU	-	EXPRESSION TAG	UNP B0TZW0
B	360	ASN	-	EXPRESSION TAG	UNP B0TZW0
B	361	LEU	-	EXPRESSION TAG	UNP B0TZW0
B	362	TYR	-	EXPRESSION TAG	UNP B0TZW0
B	363	PHE	-	EXPRESSION TAG	UNP B0TZW0
B	364	GLN	-	EXPRESSION TAG	UNP B0TZW0
B	365	SER	-	EXPRESSION TAG	UNP B0TZW0
B	366	HIS	-	EXPRESSION TAG	UNP B0TZW0
B	367	HIS	-	EXPRESSION TAG	UNP B0TZW0
B	368	HIS	-	EXPRESSION TAG	UNP B0TZW0
B	369	HIS	-	EXPRESSION TAG	UNP B0TZW0
B	370	HIS	-	EXPRESSION TAG	UNP B0TZW0
B	371	HIS	-	EXPRESSION TAG	UNP B0TZW0
B	372	TRP	-	EXPRESSION TAG	UNP B0TZW0
B	373	SER	-	EXPRESSION TAG	UNP B0TZW0
B	374	HIS	-	EXPRESSION TAG	UNP B0TZW0
B	375	PRO	-	EXPRESSION TAG	UNP B0TZW0
B	376	GLN	-	EXPRESSION TAG	UNP B0TZW0
B	377	PHE	-	EXPRESSION TAG	UNP B0TZW0
B	378	GLU	-	EXPRESSION TAG	UNP B0TZW0
B	379	LYS	-	EXPRESSION TAG	UNP B0TZW0

- Molecule 2 is ALANINE (three-letter code: ALA) (formula:  $C_3H_7NO_2$ ).



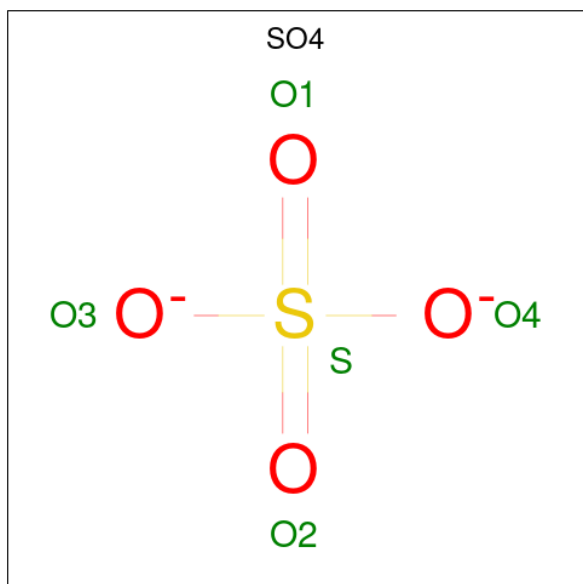
Mol	Chain	Residues	Atoms				ZeroOcc	AltConf
2	A	1	Total	C	N	O	0	0
			5	3	1	1		
2	B	1	Total	C	N	O	0	0
			5	3	1	1		

- Molecule 3 is GLUTAMIC ACID (three-letter code: GLU) (formula: C<sub>5</sub>H<sub>9</sub>NO<sub>4</sub>).



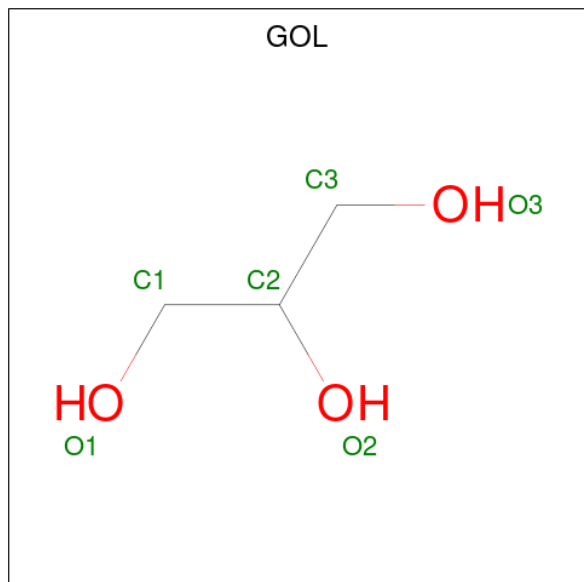
Mol	Chain	Residues	Atoms				ZeroOcc	AltConf
3	A	1	Total	C	N	O	0	0
			10	5	1	4		

- Molecule 4 is SULFATE ION (three-letter code: SO<sub>4</sub>) (formula: O<sub>4</sub>S).



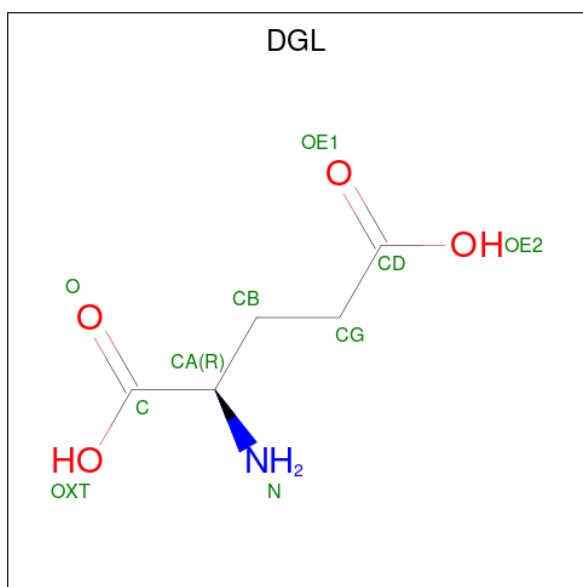
Mol	Chain	Residues	Atoms	ZeroOcc	AltConf
4	A	1	Total O S 5 4 1	0	0
4	A	1	Total O S 5 4 1	0	0
4	B	1	Total O S 5 4 1	0	0
4	B	1	Total O S 5 4 1	0	0
4	B	1	Total O S 5 4 1	0	0
4	B	1	Total O S 5 4 1	0	0

- Molecule 5 is GLYCEROL (three-letter code: GOL) (formula: C<sub>3</sub>H<sub>8</sub>O<sub>3</sub>).



Mol	Chain	Residues	Atoms	ZeroOcc	AltConf
5	A	1	Total C O 6 3 3	0	0
5	A	1	Total C O 6 3 3	0	0
5	B	1	Total C O 6 3 3	0	0
5	B	1	Total C O 6 3 3	0	0

- Molecule 6 is D-GLUTAMIC ACID (three-letter code: DGL) (formula: C<sub>5</sub>H<sub>9</sub>NO<sub>4</sub>).



Mol	Chain	Residues	Atoms				ZeroOcc	AltConf
			Total	C	N	O		
6	B	1	10	5	1	4	0	0

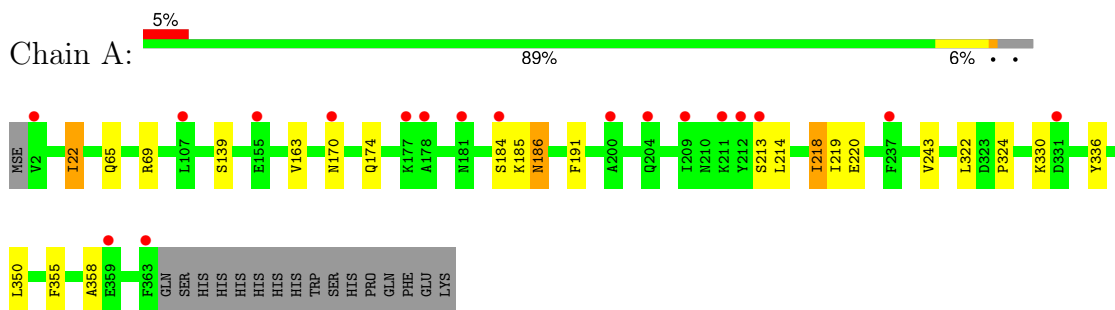
- Molecule 7 is water.

Mol	Chain	Residues	Atoms		ZeroOcc	AltConf
			Total	O		
7	A	289	289	289	0	0
7	B	419	419	419	0	0

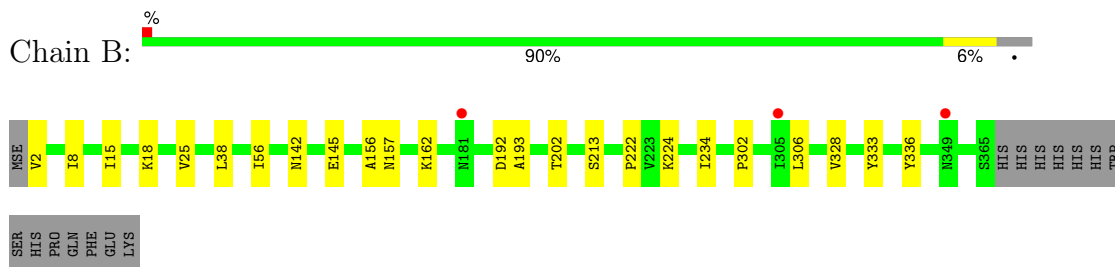
### 3 Residue-property plots [i](#)

These plots are drawn for all protein, RNA, DNA and oligosaccharide chains in the entry. The first graphic for a chain summarises the proportions of the various outlier classes displayed in the second graphic. The second graphic shows the sequence view annotated by issues in geometry and electron density. Residues are color-coded according to the number of geometric quality criteria for which they contain at least one outlier: green = 0, yellow = 1, orange = 2 and red = 3 or more. A red dot above a residue indicates a poor fit to the electron density ( $RSRZ > 2$ ). Stretches of 2 or more consecutive residues without any outlier are shown as a green connector. Residues present in the sample, but not in the model, are shown in grey.

- Molecule 1: Enzyme of enolase superfamily



- Molecule 1: Enzyme of enolase superfamily





## 4 Data and refinement statistics

Property	Value	Source
Space group	P 41 21 2	Depositor
Cell constants a, b, c, $\alpha$ , $\beta$ , $\gamma$	121.19Å 121.19Å 149.02Å 90.00° 90.00° 90.00°	Depositor
Resolution (Å)	29.69 – 1.90 30.64 – 1.90	Depositor EDS
% Data completeness (in resolution range)	96.3 (29.69-1.90) 97.6 (30.64-1.90)	Depositor EDS
$R_{merge}$	0.10	Depositor
$R_{sym}$	0.10	Depositor
$\langle I/\sigma(I) \rangle$ <sup>1</sup>	4.86 (at 1.91Å)	Xtrriage
Refinement program	PHENIX 1.7_650	Depositor
R, $R_{free}$	0.157 , 0.185 0.157 , 0.184	Depositor DCC
$R_{free}$ test set	4281 reflections (5.00%)	wwPDB-VP
Wilson B-factor (Å <sup>2</sup> )	20.0	Xtrriage
Anisotropy	0.009	Xtrriage
Bulk solvent $k_{sol}$ (e/Å <sup>3</sup> ), $B_{sol}$ (Å <sup>2</sup> )	0.37 , 60.9	EDS
L-test for twinning <sup>2</sup>	$\langle  L  \rangle = 0.50$ , $\langle L^2 \rangle = 0.33$	Xtrriage
Estimated twinning fraction	No twinning to report.	Xtrriage
$F_o, F_c$ correlation	0.96	EDS
Total number of atoms	6404	wwPDB-VP
Average B, all atoms (Å <sup>2</sup> )	24.0	wwPDB-VP

Xtrriage's analysis on translational NCS is as follows: *The largest off-origin peak in the Patterson function is 2.75% of the height of the origin peak. No significant pseudotranslation is detected.*

<sup>1</sup>Intensities estimated from amplitudes.

<sup>2</sup>Theoretical values of  $\langle |L| \rangle$ ,  $\langle L^2 \rangle$  for acentric reflections are 0.5, 0.333 respectively for untwinned datasets, and 0.375, 0.2 for perfectly twinned datasets.

## 5 Model quality [i](#)

### 5.1 Standard geometry [i](#)

Bond lengths and bond angles in the following residue types are not validated in this section: DGL, SO4, GOL

The Z score for a bond length (or angle) is the number of standard deviations the observed value is removed from the expected value. A bond length (or angle) with  $|Z| > 5$  is considered an outlier worth inspection. RMSZ is the root-mean-square of all Z scores of the bond lengths (or angles).

Mol	Chain	Bond lengths		Bond angles	
		RMSZ	# Z  >5	RMSZ	# Z  >5
1	A	0.38	0/2834	0.59	0/3821
1	B	0.41	0/2842	0.58	0/3831
All	All	0.39	0/5676	0.59	0/7652

There are no bond length outliers.

There are no bond angle outliers.

There are no chirality outliers.

There are no planarity outliers.

### 5.2 Too-close contacts [i](#)

In the following table, the Non-H and H(model) columns list the number of non-hydrogen atoms and hydrogen atoms in the chain respectively. The H(added) column lists the number of hydrogen atoms added and optimized by MolProbity. The Clashes column lists the number of clashes within the asymmetric unit, whereas Symm-Clashes lists symmetry-related clashes.

Mol	Chain	Non-H	H(model)	H(added)	Clashes	Symm-Clashes
1	A	2802	0	2856	25	0
1	B	2810	0	2861	15	0
2	A	5	0	4	0	0
2	B	5	0	4	0	0
3	A	10	0	6	0	0
4	A	10	0	0	1	0
4	B	20	0	0	0	0
5	A	12	0	16	1	0
5	B	12	0	16	1	0
6	B	10	0	5	0	0
7	A	289	0	0	2	0

*Continued on next page...*

Continued from previous page...

Mol	Chain	Non-H	H(model)	H(added)	Clashes	Symm-Clashes
7	B	419	0	0	3	0
All	All	6404	0	5768	40	0

The all-atom clashscore is defined as the number of clashes found per 1000 atoms (including hydrogen atoms). The all-atom clashscore for this structure is 3.

The worst 5 of 40 close contacts within the same asymmetric unit are listed below, sorted by their clash magnitude.

Atom-1	Atom-2	Interatomic distance (Å)	Clash overlap (Å)
1:A:218:ILE:HD11	1:A:220:GLU:HB2	1.51	0.92
1:A:185:LYS:HZ1	1:A:213:SER:C	1.78	0.86
1:A:65:GLN:HE21	1:A:69:ARG:NH2	1.82	0.76
1:A:186:ASN:HD22	1:A:186:ASN:H	1.36	0.73
1:A:218:ILE:CD1	1:A:220:GLU:HB2	2.24	0.67

There are no symmetry-related clashes.

## 5.3 Torsion angles [i](#)

### 5.3.1 Protein backbone [i](#)

In the following table, the Percentiles column shows the percent Ramachandran outliers of the chain as a percentile score with respect to all X-ray entries followed by that with respect to entries of similar resolution.

The Analysed column shows the number of residues for which the backbone conformation was analysed, and the total number of residues.

Mol	Chain	Analysed	Favoured	Allowed	Outliers	Percentiles	
1	A	361/379 (95%)	356 (99%)	5 (1%)	0	100	100
1	B	362/379 (96%)	357 (99%)	5 (1%)	0	100	100
All	All	723/758 (95%)	713 (99%)	10 (1%)	0	100	100

There are no Ramachandran outliers to report.

### 5.3.2 Protein sidechains [i](#)

In the following table, the Percentiles column shows the percent sidechain outliers of the chain as a percentile score with respect to all X-ray entries followed by that with respect to entries of similar

resolution.

The Analysed column shows the number of residues for which the sidechain conformation was analysed, and the total number of residues.

Mol	Chain	Analysed	Rotameric	Outliers	Percentiles	
1	A	305/312 (98%)	302 (99%)	3 (1%)	76	76
1	B	306/312 (98%)	305 (100%)	1 (0%)	92	93
All	All	611/624 (98%)	607 (99%)	4 (1%)	84	84

All (4) residues with a non-rotameric sidechain are listed below:

Mol	Chain	Res	Type
1	A	22	ILE
1	A	186	ASN
1	A	218	ILE
1	B	213	SER

Sometimes sidechains can be flipped to improve hydrogen bonding and reduce clashes. All (2) such sidechains are listed below:

Mol	Chain	Res	Type
1	A	65	GLN
1	A	186	ASN

### 5.3.3 RNA [i](#)

There are no RNA molecules in this entry.

## 5.4 Non-standard residues in protein, DNA, RNA chains [i](#)

There are no non-standard protein/DNA/RNA residues in this entry.

## 5.5 Carbohydrates [i](#)

There are no monosaccharides in this entry.

## 5.6 Ligand geometry [i](#)

14 ligands are modelled in this entry.

In the following table, the Counts columns list the number of bonds (or angles) for which Mogul statistics could be retrieved, the number of bonds (or angles) that are observed in the model and the number of bonds (or angles) that are defined in the Chemical Component Dictionary. The Link column lists molecule types, if any, to which the group is linked. The Z score for a bond length (or angle) is the number of standard deviations the observed value is removed from the expected value. A bond length (or angle) with  $|Z| > 2$  is considered an outlier worth inspection. RMSZ is the root-mean-square of all Z scores of the bond lengths (or angles).

Mol	Type	Chain	Res	Link	Bond lengths			Bond angles		
					Counts	RMSZ	# Z  > 2	Counts	RMSZ	# Z  > 2
6	DGL	B	481	2	8,9,9	1.08	0	8,11,11	2.14	4 (50%)
5	GOL	A	960	-	5,5,5	0.50	0	5,5,5	0.25	0
4	SO4	B	383	-	4,4,4	0.26	0	6,6,6	0.08	0
2	ALA	A	482	3	3,4,5	0.74	0	2,4,6	0.69	0
4	SO4	B	381	-	4,4,4	0.25	0	6,6,6	0.19	0
5	GOL	A	962	-	5,5,5	0.36	0	5,5,5	0.36	0
4	SO4	A	380	-	4,4,4	0.24	0	6,6,6	0.18	0
4	SO4	B	382	-	4,4,4	0.23	0	6,6,6	0.17	0
4	SO4	A	381	-	4,4,4	0.24	0	6,6,6	0.07	0
5	GOL	B	961	-	5,5,5	0.55	0	5,5,5	0.36	0
4	SO4	B	380	-	4,4,4	0.20	0	6,6,6	0.25	0
5	GOL	B	963	-	5,5,5	0.35	0	5,5,5	0.53	0
2	ALA	B	480	6	3,4,5	0.89	0	2,4,6	0.73	0
3	GLU	A	483	2	8,9,9	1.04	1 (12%)	8,11,11	1.18	1 (12%)

In the following table, the Chirals column lists the number of chiral outliers, the number of chiral centers analysed, the number of these observed in the model and the number defined in the Chemical Component Dictionary. Similar counts are reported in the Torsion and Rings columns. '-' means no outliers of that kind were identified.

Mol	Type	Chain	Res	Link	Chirals	Torsions	Rings
6	DGL	B	481	2	-	4/9/9/9	-
5	GOL	A	960	-	-	1/4/4/4	-
2	ALA	A	482	3	-	0/1/2/4	-
5	GOL	A	962	-	-	2/4/4/4	-
5	GOL	B	961	-	-	2/4/4/4	-
5	GOL	B	963	-	-	2/4/4/4	-
2	ALA	B	480	6	-	1/1/2/4	-
3	GLU	A	483	2	-	8/9/9/9	-

All (1) bond length outliers are listed below:

Mol	Chain	Res	Type	Atoms	Z	Observed(Å)	Ideal(Å)
3	A	483	GLU	OXT-C	-2.13	1.23	1.30

All (5) bond angle outliers are listed below:

Mol	Chain	Res	Type	Atoms	Z	Observed(°)	Ideal(°)
6	B	481	DGL	CB-CG-CD	3.91	122.92	112.49
6	B	481	DGL	CB-CA-C	2.43	116.89	110.45
3	A	483	GLU	OXT-C-O	-2.41	118.62	124.08
6	B	481	DGL	OE2-CD-CG	2.39	121.55	114.00
6	B	481	DGL	OXT-C-O	-2.14	119.23	124.08

There are no chirality outliers.

5 of 20 torsion outliers are listed below:

Mol	Chain	Res	Type	Atoms
2	B	480	ALA	O-C-CA-CB
3	A	483	GLU	N-CA-CB-CG
3	A	483	GLU	OXT-C-CA-CB
5	B	961	GOL	O1-C1-C2-C3
5	B	963	GOL	O1-C1-C2-C3

There are no ring outliers.

3 monomers are involved in 3 short contacts:

Mol	Chain	Res	Type	Clashes	Symm-Clashes
5	A	962	GOL	1	0
4	A	380	SO4	1	0
5	B	963	GOL	1	0

## 5.7 Other polymers [i](#)

There are no such residues in this entry.

## 5.8 Polymer linkage issues [i](#)

There are no chain breaks in this entry.

## 6 Fit of model and data [i](#)

### 6.1 Protein, DNA and RNA chains [i](#)

In the following table, the column labelled ‘#RSRZ > 2’ contains the number (and percentage) of RSRZ outliers, followed by percent RSRZ outliers for the chain as percentile scores relative to all X-ray entries and entries of similar resolution. The OWAB column contains the minimum, median, 95<sup>th</sup> percentile and maximum values of the occupancy-weighted average B-factor per residue. The column labelled ‘Q < 0.9’ lists the number of (and percentage) of residues with an average occupancy less than 0.9.

Mol	Chain	Analysed	<RSRZ>	#RSRZ>2	OWAB(Å <sup>2</sup> )	Q<0.9
1	A	354/379 (93%)	0.03	18 (5%) 28 31	9, 23, 51, 75	0
1	B	356/379 (93%)	-0.35	3 (0%) 86 87	7, 17, 36, 54	0
All	All	710/758 (93%)	-0.16	21 (2%) 50 53	7, 20, 46, 75	0

The worst 5 of 21 RSRZ outliers are listed below:

Mol	Chain	Res	Type	RSRZ
1	A	213	SER	4.7
1	A	184	SER	4.1
1	A	211	LYS	3.7
1	A	181	ASN	3.4
1	A	212	TYR	3.1

### 6.2 Non-standard residues in protein, DNA, RNA chains [i](#)

There are no non-standard protein/DNA/RNA residues in this entry.

### 6.3 Carbohydrates [i](#)

There are no monosaccharides in this entry.

### 6.4 Ligands [i](#)

In the following table, the Atoms column lists the number of modelled atoms in the group and the number defined in the chemical component dictionary. The B-factors column lists the minimum, median, 95<sup>th</sup> percentile and maximum values of B factors of atoms in the group. The column labelled ‘Q < 0.9’ lists the number of atoms with occupancy less than 0.9.

Mol	Type	Chain	Res	Atoms	RSCC	RSR	B-factors( $\text{\AA}^2$ )	Q<0.9
5	GOL	B	963	6/6	0.88	0.19	55,57,60,62	0
5	GOL	A	962	6/6	0.90	0.26	58,62,66,69	0
4	SO4	A	381	5/5	0.90	0.21	73,75,78,79	0
4	SO4	B	383	5/5	0.92	0.23	65,69,76,77	0
3	GLU	A	483	10/10	0.94	0.12	22,28,32,36	0
5	GOL	B	961	6/6	0.94	0.11	16,21,26,28	0
4	SO4	A	380	5/5	0.94	0.23	65,71,73,74	0
6	DGL	B	481	10/10	0.94	0.16	16,20,26,28	0
2	ALA	A	482	5/6	0.95	0.12	17,20,27,28	0
5	GOL	A	960	6/6	0.95	0.11	17,24,26,28	0
4	SO4	B	382	5/5	0.96	0.26	60,60,64,67	0
4	SO4	B	380	5/5	0.98	0.12	26,33,43,44	0
2	ALA	B	480	5/6	0.98	0.17	12,13,19,21	0
4	SO4	B	381	5/5	0.99	0.12	24,26,37,39	0

## 6.5 Other polymers [i](#)

There are no such residues in this entry.