



# Full wwPDB X-ray Structure Validation Report ⓘ

Apr 21, 2026 – 04:05 pm BST

PDB ID : 9QXI / pdb\_00009qxi  
Title : SARS-CoV-2 nsp14 with 2,5-dichlorothiophene-3-sulfonic acid  
Authors : Shi, X.; Kozielski, F.  
Deposited on : 2025-04-15  
Resolution : 2.14 Å(reported)

This is a Full wwPDB X-ray Structure Validation Report for a publicly released PDB entry.

We welcome your comments at [validation@mail.wwpdb.org](mailto:validation@mail.wwpdb.org)

A user guide is available at

<https://www.wwpdb.org/validation/2017/XrayValidationReportHelp>

with specific help available everywhere you see the ⓘ symbol.

The types of validation reports are described at

<http://www.wwpdb.org/validation/2017/FAQs#types>.

---

The following versions of software and data (see [references ⓘ](#)) were used in the production of this report:

MolProbity : 4-5-2 with Phenix2.0  
Mogul : 1.8.4, CSD as541be (2020)  
Xtriage (Phenix) : 2.0  
EDS : 3.0  
Buster-report : wwPDB partial adaption of 1.1.7 (2018)  
Percentile statistics : 20250101.v01 (using entries in the PDB archive January 1st 2025)  
CCP4 : 9.0.010 (Gargrove)  
Density-Fitness : 1.0.12  
Ideal geometry (proteins) : Engh & Huber (2001)  
Ideal geometry (DNA, RNA) : Parkinson et al. (1996)  
Validation Pipeline (wwPDB-VP) : 2.49

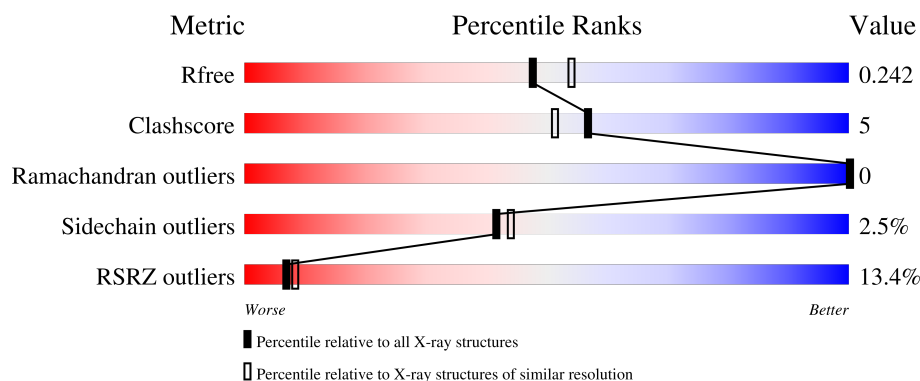
# 1 Overall quality at a glance

The following experimental techniques were used to determine the structure:

*X-RAY DIFFRACTION*

The reported resolution of this entry is 2.14 Å.

Percentile scores (ranging between 0-100) for global validation metrics of the entry are shown in the following graphic. The table shows the number of entries on which the scores are based.



Metric	Whole archive (#Entries)	Similar resolution (#Entries, resolution range(Å))
$R_{free}$	180053	3689 (2.16-2.12)
Clashscore	190562	3812 (2.16-2.12)
Ramachandran outliers	187476	3773 (2.16-2.12)
Sidechain outliers	187428	3772 (2.16-2.12)
RSRZ outliers	180081	3691 (2.16-2.12)

The table below summarises the geometric issues observed across the polymeric chains and their fit to the electron density. The red, orange, yellow and green segments of the lower bar indicate the fraction of residues that contain outliers for  $\geq 3$ , 2, 1 and 0 types of geometric quality criteria respectively. A grey segment represents the fraction of residues that are not modelled. The numeric value for each fraction is indicated below the corresponding segment, with a dot representing fractions  $\leq 5\%$ . The upper red bar (where present) indicates the fraction of residues that have poor fit to the electron density. The numeric value is given above the bar.

Mol	Chain	Length	Quality of chain
1	A	523	<div> <div>11%</div> <div>75%</div> <div>10%</div> <div>15%</div> </div>

## 2 Entry composition [i](#)

There are 6 unique types of molecules in this entry. The entry contains 3647 atoms, of which 0 are hydrogens and 0 are deuteriums.

In the tables below, the ZeroOcc column contains the number of atoms modelled with zero occupancy, the AltConf column contains the number of residues with at least one atom in alternate conformation and the Trace column contains the number of residues modelled with at most 2 atoms.

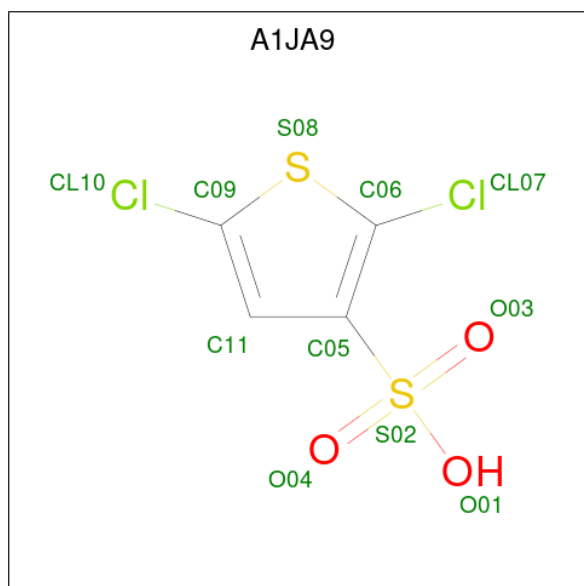
- Molecule 1 is a protein called Guanine-N7 methyltransferase nsp14.

Mol	Chain	Residues	Atoms					ZeroOcc	AltConf	Trace
1	A	447	Total	C	N	O	S	0	3	0
			3489	2254	574	625	36			

There are 2 discrepancies between the modelled and reference sequences:

Chain	Residue	Modelled	Actual	Comment	Reference
A	5	THR	-	expression tag	UNP P0DTD1
A	6	MET	-	expression tag	UNP P0DTD1

- Molecule 2 is 2,5-dichlorothiophene-3-sulfonic acid (CCD ID: A1JA9) (formula:  $C_4H_2Cl_2O_3S_2$ ) (labeled as "Ligand of Interest" by depositor).



Mol	Chain	Residues	Atoms					ZeroOcc	AltConf
2	A	1	Total	C	Cl	O	S	0	0
			11	4	2	3	2		

- Molecule 3 is DIMETHYL SULFOXIDE (CCD ID: DMS) (formula:  $C_2H_6OS$ ).

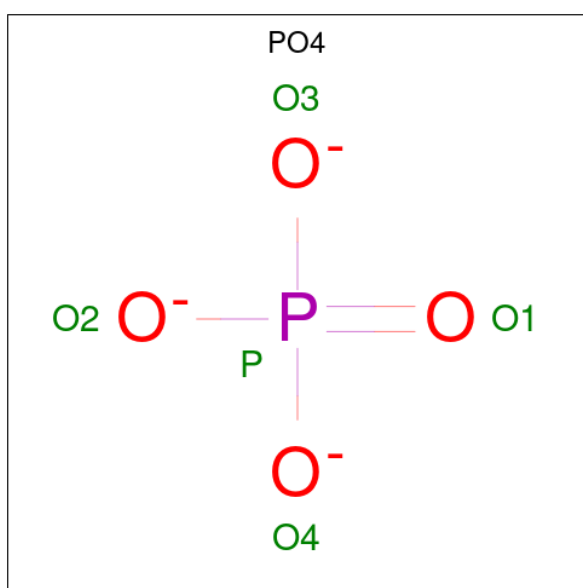


Mol	Chain	Residues	Atoms				ZeroOcc	AltConf
3	A	1	Total	C	O	S	0	0
			4	2	1	1		

- Molecule 4 is ZINC ION (CCD ID: ZN) (formula: Zn).

Mol	Chain	Residues	Atoms		ZeroOcc	AltConf
4	A	3	Total	Zn	0	0
			3	3		

- Molecule 5 is PHOSPHATE ION (CCD ID: PO4) (formula: O<sub>4</sub>P).



Mol	Chain	Residues	Atoms			ZeroOcc	AltConf
5	A	1	Total	O	P	0	0
			5	4	1		
5	A	1	Total	O	P	0	0
			5	4	1		
5	A	1	Total	O	P	0	0
			5	4	1		

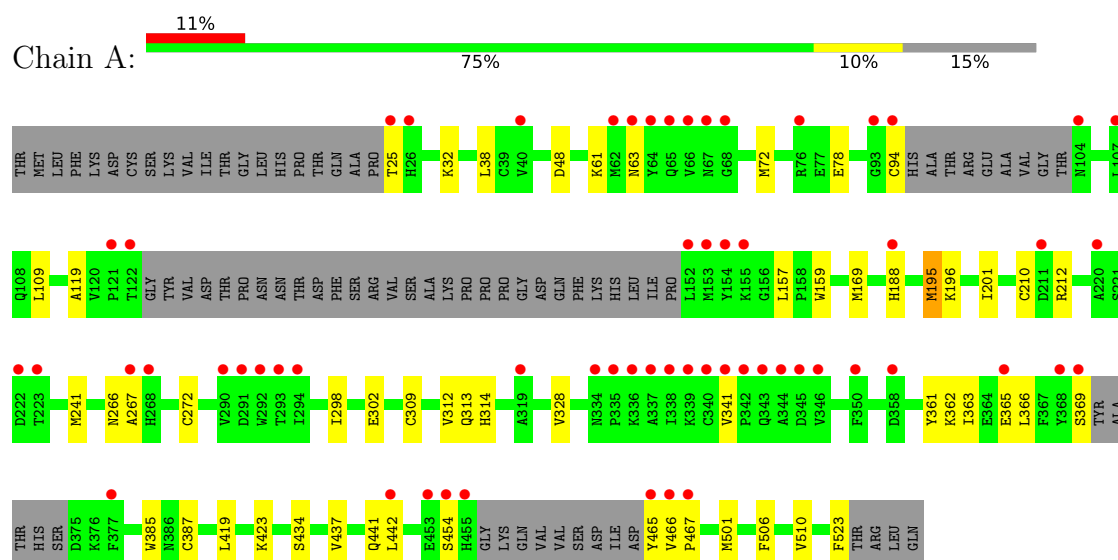
- Molecule 6 is water.

Mol	Chain	Residues	Atoms		ZeroOcc	AltConf
6	A	125	Total	O	0	0
			125	125		

### 3 Residue-property plots

These plots are drawn for all protein, RNA, DNA and oligosaccharide chains in the entry. The first graphic for a chain summarises the proportions of the various outlier classes displayed in the second graphic. The second graphic shows the sequence view annotated by issues in geometry and electron density. Residues are color-coded according to the number of geometric quality criteria for which they contain at least one outlier: green = 0, yellow = 1, orange = 2 and red = 3 or more. A red dot above a residue indicates a poor fit to the electron density ( $RSRZ > 2$ ). Stretches of 2 or more consecutive residues without any outlier are shown as a green connector. Residues present in the sample, but not in the model, are shown in grey.

#### • Molecule 1: Guanine-N7 methyltransferase nsp14



## 4 Data and refinement statistics

Property	Value	Source
Space group	P 21 21 21	Depositor
Cell constants a, b, c, $\alpha$ , $\beta$ , $\gamma$	66.62Å 66.76Å 138.66Å 90.00° 90.00° 90.00°	Depositor
Resolution (Å)	38.99 – 2.14 38.99 – 2.14	Depositor EDS
% Data completeness (in resolution range)	98.3 (38.99-2.14) 99.1 (38.99-2.14)	Depositor EDS
$R_{merge}$	(Not available)	Depositor
$R_{sym}$	(Not available)	Depositor
$\langle I/\sigma(I) \rangle$ <sup>1</sup>	1.98 (at 2.14Å)	Xtriage
Refinement program	PHENIX (1.21-5207-000)	Depositor
R, $R_{free}$	0.228 , 0.247 0.228 , 0.242	Depositor DCC
$R_{free}$ test set	1755 reflections (5.02%)	wwPDB-VP
Wilson B-factor (Å <sup>2</sup> )	38.3	Xtriage
Anisotropy	0.953	Xtriage
Bulk solvent $k_{sol}$ (e/Å <sup>3</sup> ), $B_{sol}$ (Å <sup>2</sup> )	0.34 , 39.1	EDS
L-test for twinning <sup>2</sup>	$\langle  L  \rangle = 0.52$ , $\langle L^2 \rangle = 0.36$	Xtriage
Estimated twinning fraction	0.004 for k,h,-l	Xtriage
$F_o, F_c$ correlation	0.94	EDS
Total number of atoms	3647	wwPDB-VP
Average B, all atoms (Å <sup>2</sup> )	56.0	wwPDB-VP

Xtriage's analysis on translational NCS is as follows: *The largest off-origin peak in the Patterson function is 5.05% of the height of the origin peak. No significant pseudotranslation is detected.*

<sup>1</sup>Intensities estimated from amplitudes.

<sup>2</sup>Theoretical values of  $\langle |L| \rangle$ ,  $\langle L^2 \rangle$  for acentric reflections are 0.5, 0.333 respectively for untwinned datasets, and 0.375, 0.2 for perfectly twinned datasets.

## 5 Model quality

### 5.1 Standard geometry

Bond lengths and bond angles in the following residue types are not validated in this section: A1JA9, DMS, PO4, ZN

The Z score for a bond length (or angle) is the number of standard deviations the observed value is removed from the expected value. A bond length (or angle) with  $|Z| > 5$  is considered an outlier worth inspection. RMSZ is the root-mean-square of all Z scores of the bond lengths (or angles).

Mol	Chain	Bond lengths		Bond angles	
		RMSZ	$\# Z  > 5$	RMSZ	$\# Z  > 5$
1	A	0.48	0/3589	0.62	0/4887

There are no bond length outliers.

There are no bond angle outliers.

There are no chirality outliers.

There are no planarity outliers.

### 5.2 Too-close contacts

In the following table, the Non-H and H(model) columns list the number of non-hydrogen atoms and hydrogen atoms in the chain respectively. The H(added) column lists the number of hydrogen atoms added and optimized by MolProbity. The Clashes column lists the number of clashes within the asymmetric unit, whereas Symm-Clashes lists symmetry-related clashes.

Mol	Chain	Non-H	H(model)	H(added)	Clashes	Symm-Clashes
1	A	3489	0	3236	31	0
2	A	11	0	0	0	0
3	A	4	0	6	0	0
4	A	3	0	0	0	0
5	A	15	0	0	0	0
6	A	125	0	0	4	0
All	All	3647	0	3242	31	0

The all-atom clashscore is defined as the number of clashes found per 1000 atoms (including hydrogen atoms). The all-atom clashscore for this structure is 5.

All (31) close contacts within the same asymmetric unit are listed below, sorted by their clash magnitude.



Atom-1	Atom-2	Interatomic distance (Å)	Clash overlap (Å)
1:A:195:MET:HE1	1:A:241:MET:HE1	1.62	0.82
1:A:361:TYR:HB3	1:A:366:LEU:HD21	1.69	0.73
1:A:312:VAL:HB	1:A:501:MET:HE1	1.71	0.72
1:A:72:MET:HE3	1:A:201:ILE:HG21	1.72	0.71
1:A:309:CYS:HA	1:A:501:MET:HE2	1.71	0.71
1:A:423:LYS:NZ	6:A:702:HOH:O	2.24	0.69
1:A:32:LYS:NZ	1:A:48:ASP:OD1	2.29	0.64
1:A:442:LEU:HD12	1:A:510:VAL:HB	1.79	0.64
1:A:434:SER:O	1:A:437:VAL:HG13	2.02	0.59
1:A:309:CYS:HA	1:A:501:MET:CE	2.34	0.58
1:A:362:LYS:HB2	1:A:365:GLU:HG2	1.91	0.53
1:A:361:TYR:CB	1:A:366:LEU:HD21	2.39	0.52
1:A:441:GLN:HG3	6:A:752:HOH:O	2.12	0.49
1:A:195:MET:HB3	1:A:195:MET:HE3	1.38	0.47
1:A:78:GLU:OE1	6:A:701:HOH:O	2.20	0.47
1:A:266:ASN:OD1	1:A:267:ALA:N	2.47	0.47
1:A:465:TYR:CZ	1:A:467:PRO:HA	2.50	0.47
1:A:387:CYS:HA	6:A:808:HOH:O	2.16	0.45
1:A:119:ALA:HA	1:A:157:LEU:O	2.17	0.44
1:A:267:ALA:HB3	1:A:272[B]:CYS:SG	2.59	0.43
1:A:109:LEU:HD11	1:A:159:TRP:CH2	2.52	0.43
1:A:38:LEU:HA	1:A:188[A]:HIS:O	2.18	0.43
1:A:314:HIS:ND1	1:A:341:VAL:HG22	2.32	0.43
1:A:419:LEU:HD12	1:A:419:LEU:HA	1.82	0.42
1:A:313:GLN:HE21	1:A:385:TRP:CG	2.37	0.42
1:A:501:MET:HG2	1:A:506:PHE:HB2	2.01	0.42
1:A:61:LYS:C	1:A:63:ASN:H	2.28	0.41
1:A:298:ILE:HA	1:A:302:GLU:OE2	2.21	0.41
1:A:363:ILE:HD12	1:A:363:ILE:HA	1.96	0.41
1:A:169:MET:HE2	1:A:169:MET:HB3	1.92	0.40
1:A:210:CYS:SG	1:A:212:ARG:HB2	2.62	0.40

There are no symmetry-related clashes.

## 5.3 Torsion angles ⓘ

### 5.3.1 Protein backbone ⓘ

In the following table, the Percentiles column shows the percent Ramachandran outliers of the chain as a percentile score with respect to all X-ray entries followed by that with respect to entries of similar resolution.

The Analysed column shows the number of residues for which the backbone conformation was analysed, and the total number of residues.

Mol	Chain	Analysed	Favoured	Allowed	Outliers	Percentiles	
1	A	440/523 (84%)	418 (95%)	22 (5%)	0	100	100

There are no Ramachandran outliers to report.

### 5.3.2 Protein sidechains ⓘ

In the following table, the Percentiles column shows the percent sidechain outliers of the chain as a percentile score with respect to all X-ray entries followed by that with respect to entries of similar resolution.

The Analysed column shows the number of residues for which the sidechain conformation was analysed, and the total number of residues.

Mol	Chain	Analysed	Rotameric	Outliers	Percentiles	
1	A	359/460 (78%)	350 (98%)	9 (2%)	42	44

All (9) residues with a non-rotameric sidechain are listed below:

Mol	Chain	Res	Type
1	A	25	THR
1	A	94	CYS
1	A	195	MET
1	A	196	LYS
1	A	328	VAL
1	A	369	SER
1	A	454	SER
1	A	466	VAL
1	A	523	PHE

Sometimes sidechains can be flipped to improve hydrogen bonding and reduce clashes. All (5) such sidechains are listed below:

Mol	Chain	Res	Type
1	A	26	HIS
1	A	168	GLN
1	A	245	GLN
1	A	262	GLN
1	A	388	ASN

### 5.3.3 RNA [i](#)

There are no RNA molecules in this entry.

## 5.4 Non-standard residues in protein, DNA, RNA chains [i](#)

There are no non-standard protein/DNA/RNA residues in this entry.

## 5.5 Carbohydrates [i](#)

There are no oligosaccharides in this entry.

## 5.6 Ligand geometry [i](#)

Of 8 ligands modelled in this entry, 3 are monoatomic - leaving 5 for Mogul analysis.

In the following table, the Counts columns list the number of bonds (or angles) for which Mogul statistics could be retrieved, the number of bonds (or angles) that are observed in the model and the number of bonds (or angles) that are defined in the Chemical Component Dictionary. The Link column lists molecule types, if any, to which the group is linked. The Z score for a bond length (or angle) is the number of standard deviations the observed value is removed from the expected value. A bond length (or angle) with  $|Z| > 2$  is considered an outlier worth inspection. RMSZ is the root-mean-square of all Z scores of the bond lengths (or angles).

Mol	Type	Chain	Res	Link	Bond lengths			Bond angles		
					Counts	RMSZ	# $ Z  > 2$	Counts	RMSZ	# $ Z  > 2$
5	PO4	A	608	-	4,4,4	0.80	0	6,6,6	0.93	0
3	DMS	A	602	-	3,3,3	0.27	0	3,3,3	0.32	0
2	A1JA9	A	601	-	10,11,11	2.77	5 (50%)	13,17,17	7.95	8 (61%)
5	PO4	A	607	-	4,4,4	0.67	0	6,6,6	0.67	0
5	PO4	A	606	-	4,4,4	0.84	0	6,6,6	0.46	0

In the following table, the Chirals column lists the number of chiral outliers, the number of chiral centers analysed, the number of these observed in the model and the number defined in the Chemical Component Dictionary. Similar counts are reported in the Torsion and Rings columns. '-' means no outliers of that kind were identified.

Mol	Type	Chain	Res	Link	Chirals	Torsions	Rings
2	A1JA9	A	601	-	-	0/2/6/6	0/1/1/1

All (5) bond length outliers are listed below:

Mol	Chain	Res	Type	Atoms	Z	Observed(Å)	Ideal(Å)
2	A	601	A1JA9	C06-CL07	4.55	1.79	1.71
2	A	601	A1JA9	C09-CL10	4.20	1.78	1.72
2	A	601	A1JA9	C05-S02	3.98	1.82	1.74
2	A	601	A1JA9	C11-C09	2.77	1.40	1.35
2	A	601	A1JA9	O04-S02	2.12	1.54	1.43

All (8) bond angle outliers are listed below:

Mol	Chain	Res	Type	Atoms	Z	Observed(°)	Ideal(°)
2	A	601	A1JA9	C09-S08-C06	22.95	98.29	90.04
2	A	601	A1JA9	C05-C06-S08	-11.77	106.42	113.41
2	A	601	A1JA9	O04-S02-C05	-7.86	103.30	109.11
2	A	601	A1JA9	O03-S02-C05	6.86	114.18	109.11
2	A	601	A1JA9	CL10-C09-S08	4.06	124.64	119.70
2	A	601	A1JA9	CL07-C06-S08	3.66	125.91	118.06
2	A	601	A1JA9	C11-C09-S08	-3.41	107.67	113.30
2	A	601	A1JA9	O04-S02-O03	-2.17	101.64	112.91

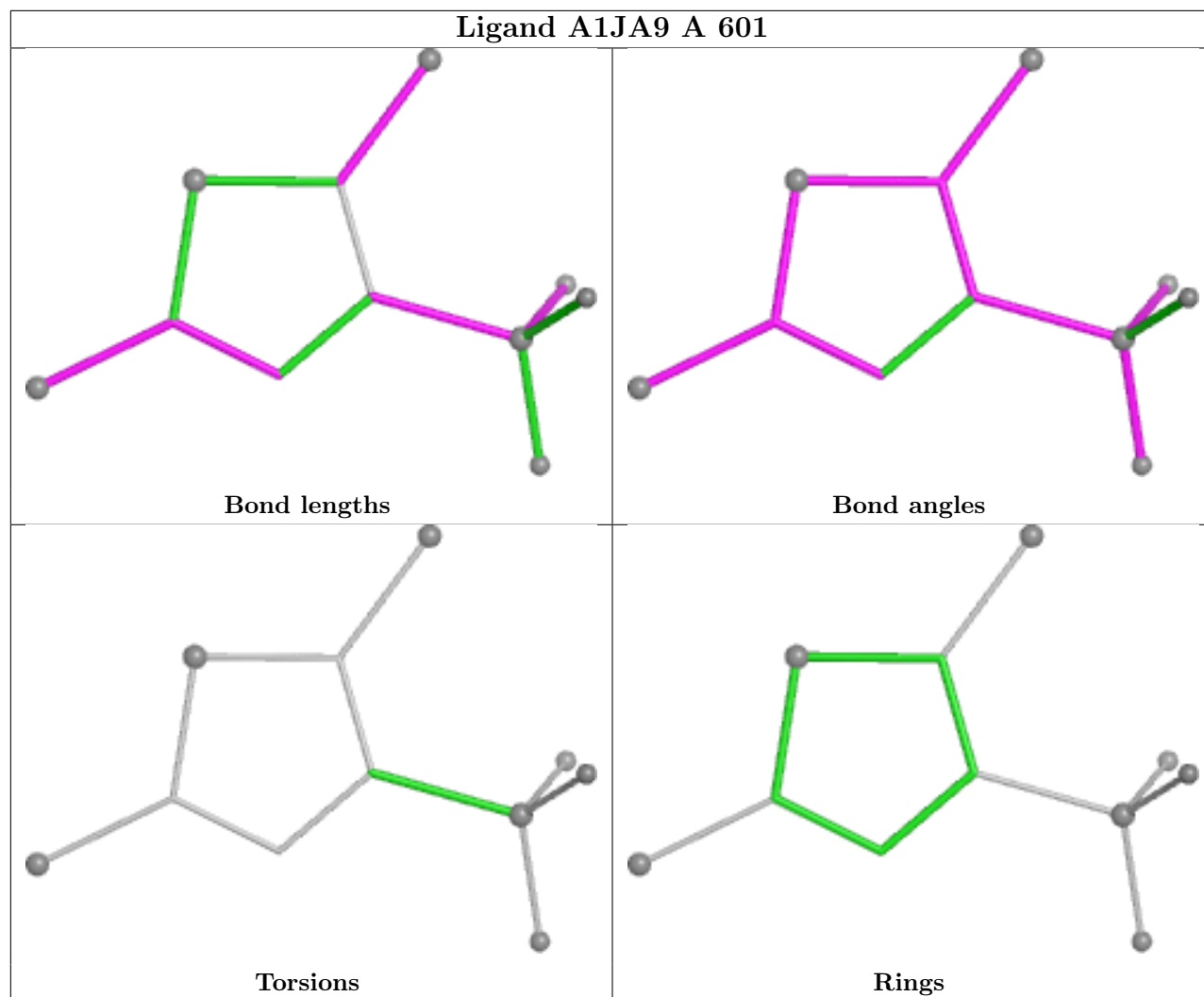
There are no chirality outliers.

There are no torsion outliers.

There are no ring outliers.

No monomer is involved in short contacts.

The following is a two-dimensional graphical depiction of Mogul quality analysis of bond lengths, bond angles, torsion angles, and ring geometry for all instances of the Ligand of Interest. In addition, ligands with molecular weight > 250 and outliers as shown on the validation Tables will also be included. For torsion angles, if less than 5% of the Mogul distribution of torsion angles is within 10 degrees of the torsion angle in question, then that torsion angle is considered an outlier. Any bond that is central to one or more torsion angles identified as an outlier by Mogul will be highlighted in the graph. For rings, the root-mean-square deviation (RMSD) between the ring in question and similar rings identified by Mogul is calculated over all ring torsion angles. If the average RMSD is greater than 60 degrees and the minimal RMSD between the ring in question and any Mogul-identified rings is also greater than 60 degrees, then that ring is considered an outlier. The outliers are highlighted in purple. The color gray indicates Mogul did not find sufficient equivalents in the CSD to analyse the geometry.



## 5.7 Other polymers [i](#)

There are no such residues in this entry.

## 5.8 Polymer linkage issues [i](#)

There are no chain breaks in this entry.

## 6 Fit of model and data

### 6.1 Protein, DNA and RNA chains

In the following table, the column labelled ‘#RSRZ> 2’ contains the number (and percentage) of RSRZ outliers, followed by percent RSRZ outliers for the chain as percentile scores relative to all X-ray entries and entries of similar resolution. The OWAB column contains the minimum, median, 95<sup>th</sup> percentile and maximum values of the occupancy-weighted average B-factor per residue. The column labelled ‘Q< 0.9’ lists the number of (and percentage) of residues with an average occupancy less than 0.9.

Mol	Chain	Analysed	<RSRZ>	#RSRZ>2	OWAB(Å <sup>2</sup> )	Q<0.9
1	A	447/523 (85%)	0.93	60 (13%) <b>7</b> <b>8</b>	24, 52, 94, 138	3 (0%)

All (60) RSRZ outliers are listed below:

Mol	Chain	Res	Type	RSRZ
1	A	66	VAL	6.4
1	A	292	TRP	6.1
1	A	122	THR	6.1
1	A	64	TYR	5.9
1	A	154	TYR	5.6
1	A	290	VAL	5.6
1	A	455	HIS	5.1
1	A	338	ILE	5.0
1	A	336	LYS	4.8
1	A	454	SER	4.7
1	A	337	ALA	4.6
1	A	369	SER	4.4
1	A	63	ASN	4.3
1	A	152	LEU	4.3
1	A	65	GLN	4.1
1	A	339	LYS	4.1
1	A	153	MET	4.0
1	A	368	TYR	3.8
1	A	94	CYS	3.7
1	A	67	ASN	3.7
1	A	466	VAL	3.6
1	A	465	TYR	3.6
1	A	155	LYS	3.5
1	A	68	GLY	3.5
1	A	25	THR	3.4
1	A	294	ILE	3.3
1	A	343	GLN	3.3

*Continued on next page...*

*Continued from previous page...*

Mol	Chain	Res	Type	RSRZ
1	A	104	ASN	3.2
1	A	467	PRO	3.2
1	A	268	HIS	3.1
1	A	342	PRO	2.9
1	A	341	VAL	2.8
1	A	26	HIS	2.8
1	A	345	ASP	2.8
1	A	220	ALA	2.8
1	A	62	MET	2.7
1	A	344	ALA	2.6
1	A	453	GLU	2.6
1	A	293	THR	2.6
1	A	222	ASP	2.4
1	A	188[A]	HIS	2.4
1	A	291	ASP	2.4
1	A	107	LEU	2.3
1	A	442	LEU	2.3
1	A	121	PRO	2.3
1	A	76	ARG	2.3
1	A	223	THR	2.3
1	A	350	PHE	2.2
1	A	365	GLU	2.2
1	A	267	ALA	2.2
1	A	335	PRO	2.1
1	A	40	VAL	2.1
1	A	346	VAL	2.1
1	A	340	CYS	2.1
1	A	334	ASN	2.1
1	A	211	ASP	2.1
1	A	93	GLY	2.1
1	A	377	PHE	2.1
1	A	319	ALA	2.0
1	A	358	ASP	2.0

## 6.2 Non-standard residues in protein, DNA, RNA chains ⓘ

There are no non-standard protein/DNA/RNA residues in this entry.

## 6.3 Carbohydrates ⓘ

There are no oligosaccharides in this entry.

## 6.4 Ligands

In the following table, the Atoms column lists the number of modelled atoms in the group and the number defined in the chemical component dictionary. The B-factors column lists the minimum, median, 95<sup>th</sup> percentile and maximum values of B factors of atoms in the group. The column labelled 'Q< 0.9' lists the number of atoms with occupancy less than 0.9.

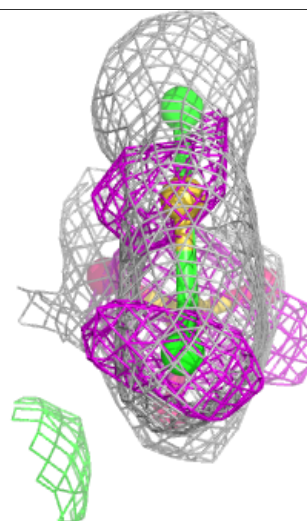
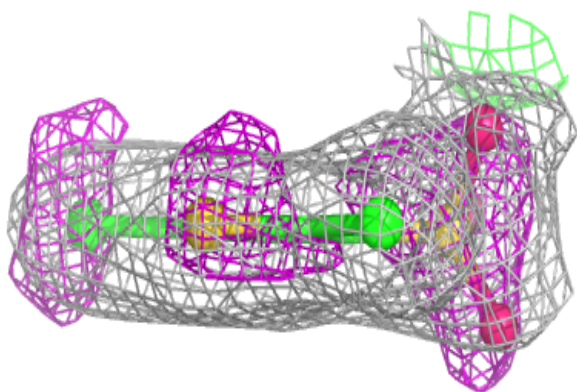
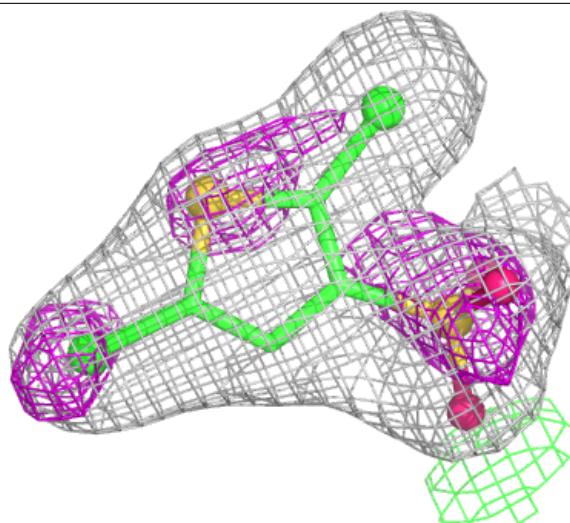
Mol	Type	Chain	Res	Atoms	RSCC	RSR	B-factors(Å <sup>2</sup> )	Q<0.9
3	DMS	A	602	4/4	0.67	0.24	73,81,85,91	0
5	PO4	A	607	5/5	0.72	0.12	74,75,87,90	0
5	PO4	A	606	5/5	0.77	0.14	99,100,123,125	0
5	PO4	A	608	5/5	0.88	0.12	76,77,78,84	0
2	A1JA9	A	601	11/11	0.90	0.12	48,56,62,70	0
4	ZN	A	603	1/1	1.00	0.03	58,58,58,58	0
4	ZN	A	604	1/1	1.00	0.03	51,51,51,51	0
4	ZN	A	605	1/1	1.00	0.02	51,51,51,51	0

The following is a graphical depiction of the model fit to experimental electron density of all instances of the Ligand of Interest. In addition, ligands with molecular weight > 250 and outliers as shown on the geometry validation Tables will also be included. Each fit is shown from different orientation to approximate a three-dimensional view.



**Electron density around A1JA9 A 601:**

$2mF_o-DF_c$  (at 0.7 rmsd) in gray  
 $mF_o-DF_c$  (at 3 rmsd) in purple (negative)  
and green (positive)



## 6.5 Other polymers [i](#)

There are no such residues in this entry.