



# Full wwPDB X-ray Structure Validation Report ⓘ

Aug 22, 2023 – 11:38 AM EDT

PDB ID : 2QTB  
Title : Human dipeptidyl peptidase iv/cd26 in complex with a 4-aryl cyclohexylalanine inhibitor  
Authors : Scapin, G.  
Deposited on : 2007-08-01  
Resolution : 2.25 Å(reported)

This is a Full wwPDB X-ray Structure Validation Report for a publicly released PDB entry.

We welcome your comments at [validation@mail.wwpdb.org](mailto:validation@mail.wwpdb.org)

A user guide is available at

<https://www.wwpdb.org/validation/2017/XrayValidationReportHelp>

with specific help available everywhere you see the ⓘ symbol.

The types of validation reports are described at

<http://www.wwpdb.org/validation/2017/FAQs#types>.

---

The following versions of software and data (see [references ⓘ](#)) were used in the production of this report:

MolProbity : 4.02b-467  
Mogul : 1.8.5 (274361), CSD as541be (2020)  
Xtriage (Phenix) : 1.13  
EDS : 2.35  
buster-report : 1.1.7 (2018)  
Percentile statistics : 20191225.v01 (using entries in the PDB archive December 25th 2019)  
Refmac : 5.8.0158  
CCP4 : 7.0.044 (Gargrove)  
Ideal geometry (proteins) : Engh & Huber (2001)  
Ideal geometry (DNA, RNA) : Parkinson et al. (1996)  
Validation Pipeline (wwPDB-VP) : 2.35

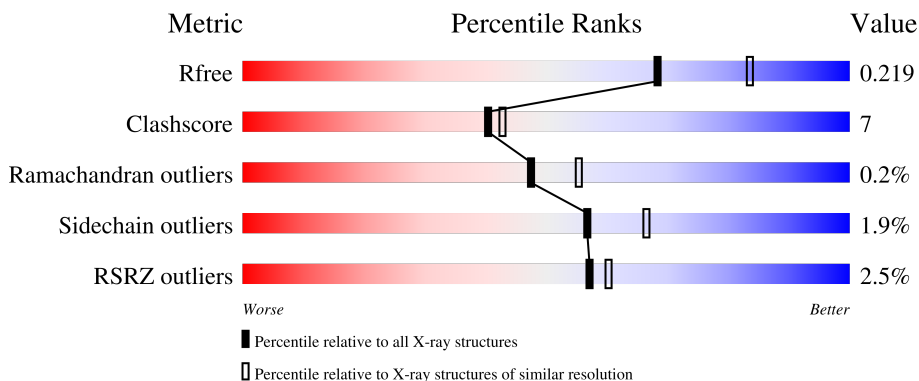
# 1 Overall quality at a glance

The following experimental techniques were used to determine the structure:

*X-RAY DIFFRACTION*

The reported resolution of this entry is 2.25 Å.

Percentile scores (ranging between 0-100) for global validation metrics of the entry are shown in the following graphic. The table shows the number of entries on which the scores are based.



Metric	Whole archive (#Entries)	Similar resolution (#Entries, resolution range(Å))
$R_{free}$	130704	1377 (2.26-2.26)
Clashscore	141614	1487 (2.26-2.26)
Ramachandran outliers	138981	1449 (2.26-2.26)
Sidechain outliers	138945	1450 (2.26-2.26)
RSRZ outliers	127900	1356 (2.26-2.26)

The table below summarises the geometric issues observed across the polymeric chains and their fit to the electron density. The red, orange, yellow and green segments of the lower bar indicate the fraction of residues that contain outliers for  $\geq 3$ , 2, 1 and 0 types of geometric quality criteria respectively. A grey segment represents the fraction of residues that are not modelled. The numeric value for each fraction is indicated below the corresponding segment, with a dot representing fractions  $\leq 5\%$ . The upper red bar (where present) indicates the fraction of residues that have poor fit to the electron density. The numeric value is given above the bar.

Mol	Chain	Length	Quality of chain
1	A	766	 2% 78% 16% • 5%
1	B	766	 3% 80% 14% • 5%
2	L	2	 100%
2	O	2	 50% 50%
3	C	2	 50% 50%

*Continued on next page...*

*Continued from previous page...*

Mol	Chain	Length	Quality of chain
3	M	2	 100%
3	P	2	 50% 50%
3	Q	2	 100%
3	R	2	 50% 50%
3	S	2	 100%
3	T	2	 50% 50%

The following table lists non-polymeric compounds, carbohydrate monomers and non-standard residues in protein, DNA, RNA chains that are outliers for geometric or electron-density-fit criteria:

Mol	Type	Chain	Res	Chirality	Geometry	Clashes	Electron density
3	NAG	M	1	X	-	-	-
3	NAG	P	1	X	-	-	-
3	NAG	P	2	-	-	-	X
3	NAG	Q	2	-	-	-	X
4	NAG	A	1092	-	-	-	X

## 2 Entry composition [i](#)

There are 7 unique types of molecules in this entry. The entry contains 13252 atoms, of which 0 are hydrogens and 0 are deuteriums.

In the tables below, the ZeroOcc column contains the number of atoms modelled with zero occupancy, the AltConf column contains the number of residues with at least one atom in alternate conformation and the Trace column contains the number of residues modelled with at most 2 atoms.

- Molecule 1 is a protein called Dipeptidyl peptidase 4.

Mol	Chain	Residues	Atoms					ZeroOcc	AltConf	Trace
			Total	C	N	O	S			
1	A	728	5965	3828	982	1129	26	0	0	0
1	B	728	5965	3828	982	1129	26	0	0	0

There are 2 discrepancies between the modelled and reference sequences:

Chain	Residue	Modelled	Actual	Comment	Reference
A	39	THR	SER	engineered mutation	UNP P27487
B	39	THR	SER	engineered mutation	UNP P27487

- Molecule 2 is an oligosaccharide called 2-acetamido-2-deoxy-alpha-D-glucopyranose-(1-4)-2-acetamido-2-deoxy-beta-D-glucopyranose.



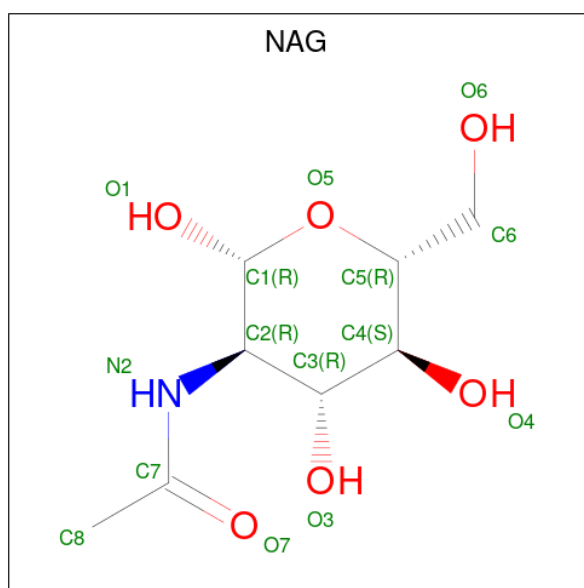
Mol	Chain	Residues	Atoms				ZeroOcc	AltConf	Trace
			Total	C	N	O			
2	L	2	28	16	2	10	0	0	0
2	O	2	28	16	2	10	0	0	0

- Molecule 3 is an oligosaccharide called 2-acetamido-2-deoxy-beta-D-glucopyranose-(1-4)-2-acetamido-2-deoxy-beta-D-glucopyranose.



Mol	Chain	Residues	Atoms				ZeroOcc	AltConf	Trace
3	M	2	Total	C	N	O	0	0	0
			28	16	2	10			
3	C	2	Total	C	N	O	0	0	0
			28	16	2	10			
3	P	2	Total	C	N	O	0	0	0
			28	16	2	10			
3	Q	2	Total	C	N	O	0	0	0
			28	16	2	10			
3	R	2	Total	C	N	O	0	0	0
			28	16	2	10			
3	S	2	Total	C	N	O	0	0	0
			28	16	2	10			
3	T	2	Total	C	N	O	0	0	0
			28	16	2	10			

- Molecule 4 is 2-acetamido-2-deoxy-beta-D-glucopyranose (three-letter code: NAG) (formula:  $C_8H_{15}NO_6$ ).



Mol	Chain	Residues	Atoms				ZeroOcc	AltConf
4	A	1	Total	C	N	O	0	0
			14	8	1	5		
4	A	1	Total	C	N	O	0	0
			14	8	1	5		
4	A	1	Total	C	N	O	0	0
			14	8	1	5		
4	B	1	Total	C	N	O	0	0
			14	8	1	5		

*Continued on next page...*

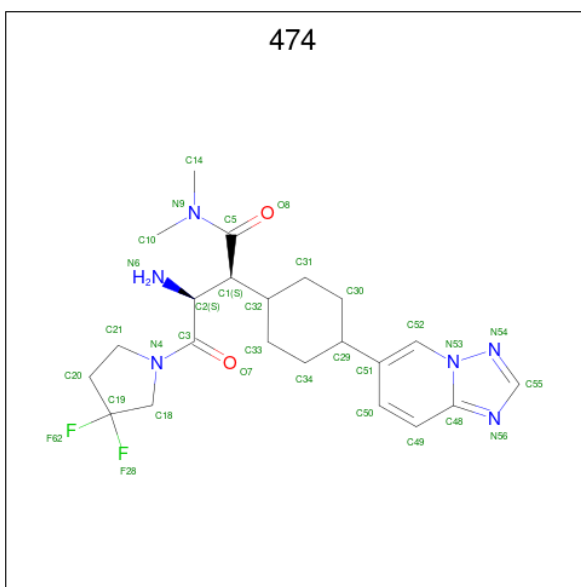
Continued from previous page...

Mol	Chain	Residues	Atoms				ZeroOcc	AltConf
4	B	1	Total	C	N	O	0	0
			14	8	1	5		
4	B	1	Total	C	N	O	0	0
			14	8	1	5		

- Molecule 5 is SODIUM ION (three-letter code: NA) (formula: Na).

Mol	Chain	Residues	Atoms		ZeroOcc	AltConf
5	A	1	Total	Na	0	0
			1	1		

- Molecule 6 is (2S,3S)-3-AMINO-4-(3,3-DIFLUOROPYRROLIDIN-1-YL)-N,N-DIMETHYL-4-OXO-2-(TRANS-4-[1,2,4]TRIAZOLO[1,5-A]PYRIDIN-6-YLCYCLOHEXYL)BUTANAMIDE (three-letter code: 474) (formula: C<sub>22</sub>H<sub>30</sub>F<sub>2</sub>N<sub>6</sub>O<sub>2</sub>).



Mol	Chain	Residues	Atoms					ZeroOcc	AltConf
6	A	1	Total	C	F	N	O	0	0
			32	22	2	6	2		
6	B	1	Total	C	F	N	O	0	0
			32	22	2	6	2		

- Molecule 7 is water.

Mol	Chain	Residues	Atoms		ZeroOcc	AltConf
7	A	453	Total	O	0	0
			453	453		

Continued on next page...

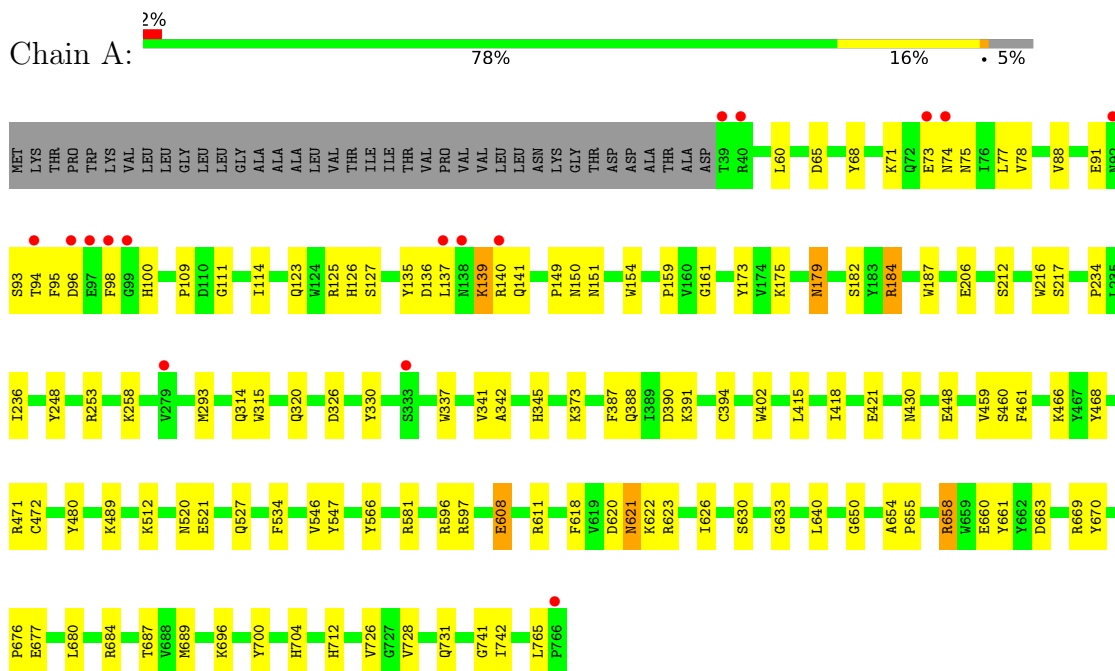
*Continued from previous page...*

Mol	Chain	Residues	Atoms	ZeroOcc	AltConf
7	B	455	Total O 455 455	0	0
7	M	2	Total O 2 2	0	0
7	O	1	Total O 1 1	0	0
7	Q	1	Total O 1 1	0	0
7	R	2	Total O 2 2	0	0
7	S	3	Total O 3 3	0	0
7	T	4	Total O 4 4	0	0

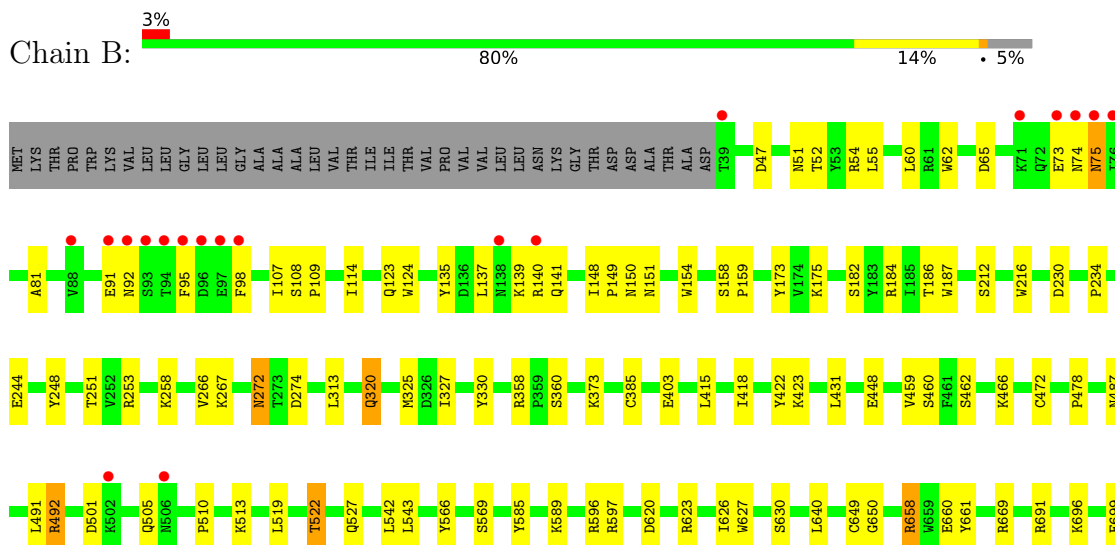
### 3 Residue-property plots i

These plots are drawn for all protein, RNA, DNA and oligosaccharide chains in the entry. The first graphic for a chain summarises the proportions of the various outlier classes displayed in the second graphic. The second graphic shows the sequence view annotated by issues in geometry and electron density. Residues are color-coded according to the number of geometric quality criteria for which they contain at least one outlier: green = 0, yellow = 1, orange = 2 and red = 3 or more. A red dot above a residue indicates a poor fit to the electron density ( $RSRZ > 2$ ). Stretches of 2 or more consecutive residues without any outlier are shown as a green connector. Residues present in the sample, but not in the model, are shown in grey.

#### • Molecule 1: Dipeptidyl peptidase 4



#### • Molecule 1: Dipeptidyl peptidase 4







- Molecule 2: 2-acetamido-2-deoxy-alpha-D-glucopyranose-(1-4)-2-acetamido-2-deoxy-beta-D-glucopyranose

Chain L: 100%

NAG1  
NDG2

- Molecule 2: 2-acetamido-2-deoxy-alpha-D-glucopyranose-(1-4)-2-acetamido-2-deoxy-beta-D-glucopyranose

Chain O: 50% 50%

NAG1  
NDG2

- Molecule 3: 2-acetamido-2-deoxy-beta-D-glucopyranose-(1-4)-2-acetamido-2-deoxy-beta-D-glucopyranose

Chain M: 100%

NAG1  
NAG2

- Molecule 3: 2-acetamido-2-deoxy-beta-D-glucopyranose-(1-4)-2-acetamido-2-deoxy-beta-D-glucopyranose

Chain C: 50% 50%

NAG1  
NAG2

- Molecule 3: 2-acetamido-2-deoxy-beta-D-glucopyranose-(1-4)-2-acetamido-2-deoxy-beta-D-glucopyranose

Chain P: 50% 50%

NAG1  
NAG2

- Molecule 3: 2-acetamido-2-deoxy-beta-D-glucopyranose-(1-4)-2-acetamido-2-deoxy-beta-D-glucopyranose

Chain Q: 100%

NAG1  
NAG2

- Molecule 3: 2-acetamido-2-deoxy-beta-D-glucofuranose-(1-4)-2-acetamido-2-deoxy-beta-D-glucofuranose

Chain R:  50% 50%

MAG1  
MAG2

- Molecule 3: 2-acetamido-2-deoxy-beta-D-glucofuranose-(1-4)-2-acetamido-2-deoxy-beta-D-glucofuranose

Chain S:  100%

MAG1  
MAG2

- Molecule 3: 2-acetamido-2-deoxy-beta-D-glucofuranose-(1-4)-2-acetamido-2-deoxy-beta-D-glucofuranose

Chain T:  50% 50%

MAG1  
MAG2

## 4 Data and refinement statistics

Property	Value	Source
Space group	P 21 21 21	Depositor
Cell constants a, b, c, $\alpha$ , $\beta$ , $\gamma$	117.86Å 125.63Å 136.81Å 90.00° 90.00° 90.00°	Depositor
Resolution (Å)	30.00 – 2.25 43.07 – 2.25	Depositor EDS
% Data completeness (in resolution range)	99.7 (30.00-2.25) 99.6 (43.07-2.25)	Depositor EDS
$R_{merge}$	0.09	Depositor
$R_{sym}$	(Not available)	Depositor
$\langle I/\sigma(I) \rangle$ <sup>1</sup>	5.94 (at 2.24Å)	Xtrriage
Refinement program	CNS, CNX	Depositor
R, $R_{free}$	0.187 , 0.228 0.179 , 0.219	Depositor DCC
$R_{free}$ test set	4852 reflections (5.02%)	wwPDB-VP
Wilson B-factor (Å <sup>2</sup> )	25.4	Xtrriage
Anisotropy	0.475	Xtrriage
Bulk solvent $k_{sol}$ (e/Å <sup>3</sup> ), $B_{sol}$ (Å <sup>2</sup> )	0.34 , 41.5	EDS
L-test for twinning <sup>2</sup>	$\langle  L  \rangle = 0.49$ , $\langle L^2 \rangle = 0.32$	Xtrriage
Estimated twinning fraction	No twinning to report.	Xtrriage
$F_o, F_c$ correlation	0.95	EDS
Total number of atoms	13252	wwPDB-VP
Average B, all atoms (Å <sup>2</sup> )	27.0	wwPDB-VP

Xtrriage's analysis on translational NCS is as follows: *The largest off-origin peak in the Patterson function is 2.76% of the height of the origin peak. No significant pseudotranslation is detected.*

<sup>1</sup>Intensities estimated from amplitudes.

<sup>2</sup>Theoretical values of  $\langle |L| \rangle$ ,  $\langle L^2 \rangle$  for acentric reflections are 0.5, 0.333 respectively for untwinned datasets, and 0.375, 0.2 for perfectly twinned datasets.

## 5 Model quality [i](#)

### 5.1 Standard geometry [i](#)

Bond lengths and bond angles in the following residue types are not validated in this section: NDG, 474, NA, NAG

The Z score for a bond length (or angle) is the number of standard deviations the observed value is removed from the expected value. A bond length (or angle) with  $|Z| > 5$  is considered an outlier worth inspection. RMSZ is the root-mean-square of all Z scores of the bond lengths (or angles).

Mol	Chain	Bond lengths		Bond angles	
		RMSZ	# Z  >5	RMSZ	# Z  >5
1	A	0.48	0/6137	0.68	0/8346
1	B	0.48	0/6137	0.68	0/8346
All	All	0.48	0/12274	0.68	0/16692

Chiral center outliers are detected by calculating the chiral volume of a chiral center and verifying if the center is modelled as a planar moiety or with the opposite hand. A planarity outlier is detected by checking planarity of atoms in a peptide group, atoms in a mainchain group or atoms of a sidechain that are expected to be planar.

Mol	Chain	#Chirality outliers	#Planarity outliers
1	A	0	1

There are no bond length outliers.

There are no bond angle outliers.

There are no chirality outliers.

All (1) planarity outliers are listed below:

Mol	Chain	Res	Type	Group
1	A	700	TYR	Sidechain

### 5.2 Too-close contacts [i](#)

In the following table, the Non-H and H(model) columns list the number of non-hydrogen atoms and hydrogen atoms in the chain respectively. The H(added) column lists the number of hydrogen atoms added and optimized by MolProbity. The Clashes column lists the number of clashes within the asymmetric unit, whereas Symm-Clashes lists symmetry-related clashes.

Mol	Chain	Non-H	H(model)	H(added)	Clashes	Symm-Clashes
1	A	5965	0	5676	91	0
1	B	5965	0	5679	81	0
2	L	28	0	24	2	0
2	O	28	0	24	3	0
3	C	28	0	25	1	0
3	M	28	0	25	2	0
3	P	28	0	25	1	0
3	Q	28	0	25	0	0
3	R	28	0	25	1	0
3	S	28	0	25	0	0
3	T	28	0	25	1	0
4	A	42	0	39	4	0
4	B	42	0	39	1	0
5	A	1	0	0	0	0
6	A	32	0	30	1	0
6	B	32	0	30	5	0
7	A	453	0	0	3	0
7	B	455	0	0	2	0
7	M	2	0	0	0	0
7	O	1	0	0	0	0
7	Q	1	0	0	0	0
7	R	2	0	0	0	0
7	S	3	0	0	0	0
7	T	4	0	0	1	0
All	All	13252	0	11716	173	0

The all-atom clashscore is defined as the number of clashes found per 1000 atoms (including hydrogen atoms). The all-atom clashscore for this structure is 7.

All (173) close contacts within the same asymmetric unit are listed below, sorted by their clash magnitude.

Atom-1	Atom-2	Interatomic distance (Å)	Clash overlap (Å)
1:A:149:PRO:HA	3:M:1:NAG:H82	1.40	1.01
1:A:581:ARG:NH1	4:A:1520:NAG:H62	1.91	0.85
1:B:726:VAL:HG23	1:B:728:VAL:HG23	1.60	0.81
2:O:1:NAG:H61	2:O:2:NDG:O5	1.83	0.78
1:A:696:LYS:HG3	1:A:728:VAL:HG22	1.65	0.77
1:A:581:ARG:CZ	4:A:1520:NAG:H62	2.15	0.77
1:B:358:ARG:HD3	6:B:2322:474:N56	2.00	0.77
1:A:596:ARG:O	1:A:597:ARG:HD2	1.86	0.76
1:B:184:ARG:HD3	1:B:186:THR:O	1.86	0.75
1:A:139:LYS:HG3	1:A:141:GLN:HB3	1.68	0.73

*Continued on next page...*

*Continued from previous page...*

Atom-1	Atom-2	Interatomic distance (Å)	Clash overlap (Å)
1:B:258:LYS:NZ	1:B:712:HIS:HD2	1.87	0.72
1:A:258:LYS:HZ1	1:A:712:HIS:HD2	1.38	0.72
1:A:258:LYS:NZ	1:A:712:HIS:HD2	1.89	0.70
1:B:320:GLN:OE1	1:B:669:ARG:HD3	1.91	0.70
1:A:658:ARG:HG2	1:A:661:TYR:CE2	2.27	0.70
1:B:691:ARG:HD2	7:B:2356:HOH:O	1.90	0.70
1:B:258:LYS:HZ3	1:B:712:HIS:HD2	1.40	0.69
1:B:630:SER:OG	6:B:2322:474:H212	1.93	0.69
1:A:173:TYR:CE2	1:A:184:ARG:HG2	2.30	0.67
1:B:251:THR:HG21	1:B:253:ARG:NH1	2.08	0.67
1:A:65:ASP:OD2	1:A:466:LYS:HB2	1.96	0.65
1:B:114:ILE:HG23	1:B:135:TYR:HB3	1.77	0.65
1:B:272:ASN:C	1:B:272:ASN:HD22	1.99	0.65
1:B:696:LYS:HG3	1:B:728:VAL:HG22	1.79	0.65
1:B:114:ILE:CG2	1:B:135:TYR:HB3	2.27	0.65
1:B:184:ARG:HD2	1:B:187:TRP:CE2	2.33	0.64
1:A:630:SER:OG	6:A:1521:474:H212	1.96	0.64
1:B:640:LEU:HD11	1:B:650:GLY:HA3	1.79	0.64
1:A:621:ASN:HD22	1:A:622:LYS:N	1.96	0.64
1:B:360:SER:O	1:B:373:LYS:HE3	1.97	0.63
1:B:658:ARG:HG2	1:B:661:TYR:CE2	2.33	0.63
1:A:640:LEU:HD11	1:A:650:GLY:HA3	1.81	0.62
1:B:258:LYS:HZ3	1:B:712:HIS:CD2	2.17	0.62
1:A:179:ASN:H	1:A:179:ASN:HD22	1.47	0.61
1:A:621:ASN:HD22	1:A:621:ASN:C	2.02	0.61
1:B:55:LEU:HD11	1:B:478:PRO:HD2	1.83	0.61
1:A:77:LEU:HD23	1:A:88:VAL:HA	1.84	0.60
1:A:314:GLN:HE22	1:A:373:LYS:NZ	2.00	0.60
1:B:272:ASN:HD21	1:B:274:ASP:HB2	1.66	0.60
1:B:107:ILE:HD12	1:B:107:ILE:N	2.17	0.60
1:A:75:ASN:HD21	4:A:1092:NAG:HN2	1.48	0.59
1:B:81:ALA:O	1:B:492:ARG:NH2	2.33	0.59
1:B:620:ASP:OD2	1:B:623:ARG:HD3	2.02	0.59
1:A:248:TYR:CZ	1:B:234:PRO:HB2	2.37	0.58
1:A:415:LEU:HD23	1:A:415:LEU:C	2.24	0.58
1:B:65:ASP:OD2	1:B:466:LYS:HB2	2.03	0.57
1:B:491:LEU:O	1:B:492:ARG:HB3	2.05	0.57
1:B:91:GLU:HA	1:B:91:GLU:OE1	2.04	0.57
1:B:519:LEU:O	1:B:522:THR:HG23	2.04	0.57
1:B:60:LEU:HD12	1:B:60:LEU:C	2.25	0.56
2:O:2:NDG:O7	2:O:2:NDG:H3	2.05	0.56

*Continued on next page...*

*Continued from previous page...*

Atom-1	Atom-2	Interatomic distance (Å)	Clash overlap (Å)
1:A:676:PRO:HG2	1:A:677:GLU:OE2	2.05	0.56
1:A:60:LEU:HD12	1:A:60:LEU:C	2.26	0.56
1:A:91:GLU:HB2	1:A:94:THR:OG1	2.05	0.56
1:B:501:ASP:O	1:B:505:GLN:HG2	2.05	0.56
1:A:680:LEU:HD11	1:A:684:ARG:CZ	2.36	0.55
1:B:139:LYS:HB3	1:B:141:GLN:HE21	1.70	0.55
1:B:422:TYR:CE2	1:B:423:LYS:HE2	2.42	0.55
1:A:184:ARG:HH11	1:A:187:TRP:HA	1.72	0.54
1:A:159:PRO:HD3	1:A:216:TRP:CB	2.37	0.54
1:A:98:PHE:CE2	1:A:100:HIS:HB2	2.43	0.54
1:B:137:LEU:O	1:B:140:ARG:HD3	2.07	0.54
1:B:251:THR:HG21	1:B:253:ARG:HH12	1.72	0.54
1:A:620:ASP:OD2	1:A:623:ARG:HD3	2.08	0.53
1:A:314:GLN:HE22	1:A:373:LYS:HZ3	1.56	0.53
1:A:390:ASP:O	1:A:391:LYS:HD2	2.09	0.52
1:A:71:LYS:HE3	1:A:74:ASN:HA	1.91	0.52
1:B:658:ARG:HD3	1:B:660:GLU:HB2	1.90	0.51
1:B:47:ASP:HA	1:B:52:THR:HG23	1.92	0.51
1:B:173:TYR:CE2	1:B:184:ARG:HG3	2.46	0.51
1:A:621:ASN:C	1:A:621:ASN:ND2	2.65	0.51
1:B:51:ASN:OD1	1:B:54:ARG:HD3	2.11	0.51
1:A:73:GLU:O	1:A:74:ASN:HB2	2.11	0.50
1:A:330:TYR:HB2	1:A:337:TRP:CH2	2.46	0.50
1:A:125:ARG:HG2	1:A:126:HIS:CE1	2.46	0.50
1:A:253:ARG:HH21	1:B:253:ARG:CZ	2.25	0.50
1:A:608:GLU:OE1	1:A:611:ARG:HD2	2.11	0.50
1:B:358:ARG:CD	6:B:2322:474:N56	2.74	0.50
1:A:471:ARG:HG3	1:A:480:TYR:CE2	2.47	0.50
1:A:669:ARG:HD2	1:A:670:TYR:CZ	2.47	0.49
1:B:415:LEU:C	1:B:415:LEU:HD23	2.32	0.49
1:A:95:PHE:HB3	1:A:98:PHE:HB2	1.95	0.49
1:A:175:LYS:HG3	1:A:182:SER:HB3	1.95	0.49
1:B:626:ILE:O	1:B:650:GLY:HA2	2.12	0.49
1:A:330:TYR:CE2	3:C:2:NAG:H83	2.47	0.49
1:B:75:ASN:HB3	1:B:92:ASN:H	1.77	0.48
1:A:633:GLY:HA3	1:A:655:PRO:HB3	1.95	0.48
1:B:510:PRO:HD3	1:B:569:SER:HB2	1.95	0.48
1:A:136:ASP:CG	1:A:139:LYS:HG2	2.33	0.48
1:B:107:ILE:HG22	1:B:108:SER:O	2.13	0.48
1:A:293:MET:HG2	1:A:315:TRP:HB3	1.95	0.48
1:B:358:ARG:HD2	6:B:2322:474:H49	1.95	0.48

*Continued on next page...*

*Continued from previous page...*

Atom-1	Atom-2	Interatomic distance (Å)	Clash overlap (Å)
1:B:513:LYS:O	1:B:527:GLN:HA	2.14	0.48
1:B:741:GLY:O	1:B:742:ILE:C	2.51	0.47
1:B:542:LEU:HD23	1:B:543:LEU:N	2.29	0.47
1:A:75:ASN:ND2	4:A:1092:NAG:HN2	2.12	0.47
1:A:253:ARG:HH21	1:B:253:ARG:NH1	2.13	0.47
1:A:626:ILE:O	1:A:650:GLY:HA2	2.15	0.47
1:B:596:ARG:O	1:B:597:ARG:HD2	2.15	0.46
1:B:175:LYS:HG3	1:B:182:SER:HB3	1.97	0.46
1:A:206:GLU:OE2	1:A:663:ASP:OD2	2.34	0.46
1:B:649:CYS:HB3	1:B:699:GLU:HB2	1.97	0.46
3:M:1:NAG:H4	3:M:2:NAG:H2	1.69	0.46
1:B:95:PHE:HB3	1:B:98:PHE:HB2	1.98	0.46
1:B:418:ILE:HD13	1:B:431:LEU:HA	1.97	0.46
1:A:387:PHE:CD1	1:A:394:CYS:HB3	2.51	0.45
1:B:272:ASN:HD22	1:B:274:ASP:H	1.65	0.45
1:B:272:ASN:ND2	1:B:274:ASP:H	2.15	0.45
3:P:1:NAG:O3	3:P:2:NAG:N2	2.50	0.45
1:A:111:GLY:O	1:A:137:LEU:HD12	2.17	0.45
1:A:512:LYS:HE3	1:A:527:GLN:OE1	2.17	0.45
1:A:150:ASN:O	1:A:151:ASN:HB2	2.16	0.45
1:A:546:VAL:CG2	1:A:547:TYR:N	2.80	0.45
1:A:93:SER:HB2	1:A:96:ASP:OD2	2.16	0.44
1:A:184:ARG:NH1	1:A:187:TRP:HA	2.32	0.44
2:O:1:NAG:H61	2:O:2:NDG:C1	2.47	0.44
1:A:731:GLN:NE2	7:A:1972:HOH:O	2.49	0.44
1:B:459:VAL:HG22	1:B:460:SER:N	2.32	0.44
7:A:1972:HOH:O	1:B:731:GLN:NE2	2.51	0.44
1:B:658:ARG:O	1:B:658:ARG:HG3	2.18	0.44
1:A:154:TRP:CE2	1:A:212:SER:HB3	2.53	0.44
1:A:658:ARG:HB2	1:A:687:THR:HG22	2.00	0.44
1:A:658:ARG:HD3	1:A:660:GLU:HB2	2.00	0.44
1:B:358:ARG:HD2	6:B:2322:474:C49	2.48	0.44
1:A:345:HIS:HE1	1:A:391:LYS:O	2.01	0.44
1:A:109:PRO:HD2	1:A:161:GLY:O	2.17	0.43
1:A:726:VAL:HG23	1:A:728:VAL:HG23	2.00	0.43
1:A:139:LYS:NZ	1:A:139:LYS:HB3	2.33	0.43
1:A:489:LYS:HE3	7:A:1822:HOH:O	2.18	0.43
1:A:236:ILE:HG12	1:A:712:HIS:CE1	2.53	0.43
1:A:125:ARG:HG2	1:A:126:HIS:NE2	2.33	0.43
1:B:154:TRP:CE2	1:B:212:SER:HB3	2.52	0.43
1:A:341:VAL:HG13	1:A:342:ALA:N	2.33	0.43

*Continued on next page...*



Continued from previous page...

Atom-1	Atom-2	Interatomic distance (Å)	Clash overlap (Å)
1:A:418:ILE:HA	1:A:430:ASN:O	2.19	0.43
1:A:114:ILE:CG2	1:A:135:TYR:HB3	2.49	0.42
1:B:109:PRO:HG2	1:B:158:SER:O	2.19	0.42
1:A:461:PHE:CD2	1:A:468:TYR:HB3	2.54	0.42
1:B:403:GLU:OE1	1:B:585:TYR:HA	2.19	0.42
1:A:534:PHE:HZ	1:A:618:PHE:CG	2.37	0.42
1:B:330:TYR:CE2	3:R:2:NAG:H83	2.54	0.42
1:A:623:ARG:NH2	1:A:765:LEU:HD21	2.33	0.42
3:T:2:NAG:H2	7:T:483:HOH:O	2.19	0.42
1:A:60:LEU:HB2	1:A:68:TYR:CD1	2.54	0.42
1:A:546:VAL:HG22	1:A:547:TYR:N	2.34	0.42
1:B:62:TRP:CD2	1:B:462:SER:HA	2.54	0.42
1:B:123:GLN:HG2	1:B:124:TRP:N	2.34	0.42
1:A:689:MET:HE3	1:B:244:GLU:HG3	2.02	0.42
1:A:234:PRO:HB2	1:B:248:TYR:CZ	2.55	0.42
1:A:78:VAL:HG13	2:L:1:NAG:H81	2.01	0.42
2:L:1:NAG:H62	2:L:2:NDG:HA	1.84	0.42
1:B:325:MET:HE2	1:B:327:ILE:HG12	2.02	0.41
1:B:542:LEU:HD23	1:B:542:LEU:C	2.41	0.41
1:A:139:LYS:O	1:A:140:ARG:C	2.58	0.41
1:A:489:LYS:HB2	1:A:489:LYS:NZ	2.35	0.41
1:B:148:ILE:HA	1:B:149:PRO:HD3	1.90	0.41
1:A:253:ARG:NH2	1:B:253:ARG:NH1	2.68	0.41
1:A:159:PRO:HG3	1:A:217:SER:O	2.20	0.41
1:A:512:LYS:HE3	1:A:527:GLN:CD	2.40	0.41
1:B:251:THR:CG2	1:B:253:ARG:NH1	2.82	0.41
1:B:75:ASN:HB3	1:B:92:ASN:N	2.35	0.41
1:B:266:VAL:HG22	1:B:267:LYS:N	2.34	0.41
1:A:136:ASP:HB3	1:A:139:LYS:HG2	2.03	0.41
1:A:402:TRP:CD2	1:A:421:GLU:HB2	2.56	0.41
1:A:520:ASN:O	1:A:521:GLU:HB2	2.21	0.41
1:B:73:GLU:OE1	4:B:2092:NAG:H83	2.21	0.41
1:B:150:ASN:O	1:B:151:ASN:HB2	2.20	0.41
1:B:589:LYS:HB3	7:B:2489:HOH:O	2.21	0.41
1:A:123:GLN:HB3	1:A:127:SER:OG	2.21	0.41
1:A:741:GLY:O	1:A:742:ILE:C	2.59	0.41
1:A:459:VAL:HG22	1:A:460:SER:N	2.36	0.40
1:B:159:PRO:HD3	1:B:216:TRP:CB	2.51	0.40
1:A:654:ALA:HA	1:A:704:HIS:CE1	2.56	0.40
1:B:184:ARG:HD2	1:B:187:TRP:CD2	2.55	0.40

There are no symmetry-related clashes.

## 5.3 Torsion angles [i](#)

### 5.3.1 Protein backbone [i](#)

In the following table, the Percentiles column shows the percent Ramachandran outliers of the chain as a percentile score with respect to all X-ray entries followed by that with respect to entries of similar resolution.

The Analysed column shows the number of residues for which the backbone conformation was analysed, and the total number of residues.

Mol	Chain	Analysed	Favoured	Allowed	Outliers	Percentiles	
1	A	726/766 (95%)	697 (96%)	28 (4%)	1 (0%)	51	60
1	B	726/766 (95%)	696 (96%)	28 (4%)	2 (0%)	41	46
All	All	1452/1532 (95%)	1393 (96%)	56 (4%)	3 (0%)	47	55

All (3) Ramachandran outliers are listed below:

Mol	Chain	Res	Type
1	B	320	GLN
1	A	320	GLN
1	B	492	ARG

### 5.3.2 Protein sidechains [i](#)

In the following table, the Percentiles column shows the percent sidechain outliers of the chain as a percentile score with respect to all X-ray entries followed by that with respect to entries of similar resolution.

The Analysed column shows the number of residues for which the sidechain conformation was analysed, and the total number of residues.

Mol	Chain	Analysed	Rotameric	Outliers	Percentiles	
1	A	653/683 (96%)	642 (98%)	11 (2%)	60	71
1	B	653/683 (96%)	639 (98%)	14 (2%)	53	62
All	All	1306/1366 (96%)	1281 (98%)	25 (2%)	57	66

All (25) residues with a non-rotameric sidechain are listed below:

Mol	Chain	Res	Type
1	A	139	LYS
1	A	179	ASN
1	A	184	ARG

*Continued on next page...*

*Continued from previous page...*

Mol	Chain	Res	Type
1	A	326	ASP
1	A	388	GLN
1	A	448	GLU
1	A	472	CYS
1	A	566	TYR
1	A	608	GLU
1	A	621	ASN
1	A	658	ARG
1	B	74	ASN
1	B	75	ASN
1	B	230	ASP
1	B	272	ASN
1	B	313	LEU
1	B	385	CYS
1	B	448	GLU
1	B	472	CYS
1	B	487	ASN
1	B	522	THR
1	B	566	TYR
1	B	627	TRP
1	B	658	ARG
1	B	761	GLN

Sometimes sidechains can be flipped to improve hydrogen bonding and reduce clashes. All (20) such sidechains are listed below:

Mol	Chain	Res	Type
1	A	123	GLN
1	A	141	GLN
1	A	169	ASN
1	A	179	ASN
1	A	314	GLN
1	A	338	ASN
1	A	505	GLN
1	A	621	ASN
1	A	712	HIS
1	A	731	GLN
1	B	74	ASN
1	B	141	GLN
1	B	169	ASN
1	B	272	ASN
1	B	487	ASN
1	B	533	HIS

*Continued on next page...*

Continued from previous page...

Mol	Chain	Res	Type
1	B	621	ASN
1	B	712	HIS
1	B	731	GLN
1	B	761	GLN

### 5.3.3 RNA [i](#)

There are no RNA molecules in this entry.

### 5.4 Non-standard residues in protein, DNA, RNA chains [i](#)

There are no non-standard protein/DNA/RNA residues in this entry.

### 5.5 Carbohydrates [i](#)

18 monosaccharides are modelled in this entry.

In the following table, the Counts columns list the number of bonds (or angles) for which Mogul statistics could be retrieved, the number of bonds (or angles) that are observed in the model and the number of bonds (or angles) that are defined in the Chemical Component Dictionary. The Link column lists molecule types, if any, to which the group is linked. The Z score for a bond length (or angle) is the number of standard deviations the observed value is removed from the expected value. A bond length (or angle) with  $|Z| > 2$  is considered an outlier worth inspection. RMSZ is the root-mean-square of all Z scores of the bond lengths (or angles).

Mol	Type	Chain	Res	Link	Bond lengths			Bond angles		
					Counts	RMSZ	# $ Z  > 2$	Counts	RMSZ	# $ Z  > 2$
3	NAG	C	1	1,3	14,14,15	0.53	0	17,19,21	0.70	0
3	NAG	C	2	3	14,14,15	0.56	0	17,19,21	0.60	0
2	NAG	L	1	1,2	14,14,15	0.86	1 (7%)	17,19,21	1.30	2 (11%)
2	NDG	L	2	2	14,14,15	0.78	0	17,19,21	0.93	1 (5%)
3	NAG	M	1	1,3	14,14,15	0.92	1 (7%)	17,19,21	0.73	0
3	NAG	M	2	3	14,14,15	0.85	1 (7%)	17,19,21	0.67	0
2	NAG	O	1	1,2	14,14,15	0.70	0	17,19,21	0.84	0
2	NDG	O	2	2	14,14,15	0.78	1 (7%)	17,19,21	0.76	0
3	NAG	P	1	1,3	14,14,15	0.83	1 (7%)	17,19,21	0.75	0
3	NAG	P	2	3	14,14,15	0.71	0	17,19,21	0.75	0
3	NAG	Q	1	1,3	14,14,15	0.51	0	17,19,21	0.58	0
3	NAG	Q	2	3	14,14,15	0.75	0	17,19,21	0.75	0
3	NAG	R	1	1,3	14,14,15	0.49	0	17,19,21	0.69	0

Mol	Type	Chain	Res	Link	Bond lengths			Bond angles		
					Counts	RMSZ	# Z  > 2	Counts	RMSZ	# Z  > 2
3	NAG	R	2	3	14,14,15	0.53	0	17,19,21	0.72	0
3	NAG	S	1	1,3	14,14,15	0.63	0	17,19,21	0.73	0
3	NAG	S	2	3	14,14,15	0.64	0	17,19,21	0.74	0
3	NAG	T	1	1,3	14,14,15	0.44	0	17,19,21	0.85	0
3	NAG	T	2	3	14,14,15	0.69	0	17,19,21	0.75	0

In the following table, the Chirals column lists the number of chiral outliers, the number of chiral centers analysed, the number of these observed in the model and the number defined in the Chemical Component Dictionary. Similar counts are reported in the Torsion and Rings columns. '-' means no outliers of that kind were identified.

Mol	Type	Chain	Res	Link	Chirals	Torsions	Rings
3	NAG	C	1	1,3	-	0/6/23/26	0/1/1/1
3	NAG	C	2	3	-	0/6/23/26	0/1/1/1
2	NAG	L	1	1,2	-	0/6/23/26	0/1/1/1
2	NDG	L	2	2	-	2/6/23/26	0/1/1/1
3	NAG	M	1	1,3	1/1/5/7	0/6/23/26	0/1/1/1
3	NAG	M	2	3	-	2/6/23/26	0/1/1/1
2	NAG	O	1	1,2	-	2/6/23/26	0/1/1/1
2	NDG	O	2	2	-	3/6/23/26	0/1/1/1
3	NAG	P	1	1,3	1/1/5/7	0/6/23/26	0/1/1/1
3	NAG	P	2	3	-	2/6/23/26	0/1/1/1
3	NAG	Q	1	1,3	-	0/6/23/26	0/1/1/1
3	NAG	Q	2	3	-	0/6/23/26	0/1/1/1
3	NAG	R	1	1,3	-	0/6/23/26	0/1/1/1
3	NAG	R	2	3	-	0/6/23/26	0/1/1/1
3	NAG	S	1	1,3	-	0/6/23/26	0/1/1/1
3	NAG	S	2	3	-	0/6/23/26	0/1/1/1
3	NAG	T	1	1,3	-	0/6/23/26	0/1/1/1
3	NAG	T	2	3	-	2/6/23/26	0/1/1/1

All (5) bond length outliers are listed below:

Mol	Chain	Res	Type	Atoms	Z	Observed(Å)	Ideal(Å)
3	M	1	NAG	C1-C2	2.79	1.56	1.52
2	L	1	NAG	C1-C2	2.50	1.56	1.52
3	P	1	NAG	C1-C2	2.32	1.55	1.52
2	O	2	NDG	C1-C2	2.26	1.55	1.52
3	M	2	NAG	C1-C2	2.26	1.55	1.52

All (3) bond angle outliers are listed below:

Mol	Chain	Res	Type	Atoms	Z	Observed(°)	Ideal(°)
2	L	1	NAG	C4-C3-C2	-3.94	105.25	111.02
2	L	1	NAG	C2-N2-C7	-2.29	119.64	122.90
2	L	2	NDG	C3-C4-C5	2.03	113.87	110.24

All (2) chirality outliers are listed below:

Mol	Chain	Res	Type	Atom
3	M	1	NAG	C1
3	P	1	NAG	C1

All (13) torsion outliers are listed below:

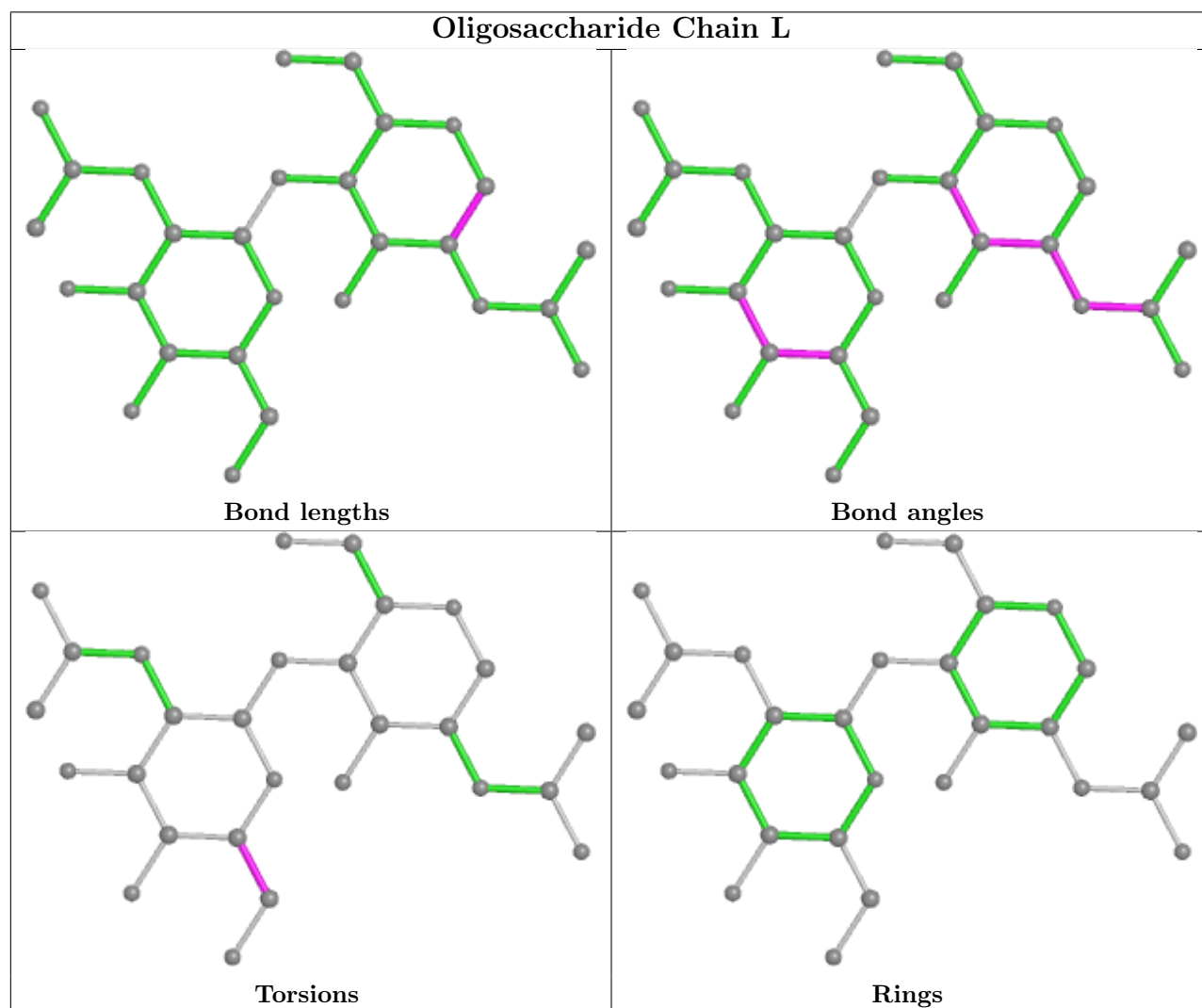
Mol	Chain	Res	Type	Atoms
2	L	2	NDG	O5-C5-C6-O6
2	O	2	NDG	O5-C5-C6-O6
2	O	2	NDG	C4-C5-C6-O6
2	L	2	NDG	C4-C5-C6-O6
3	T	2	NAG	O5-C5-C6-O6
3	T	2	NAG	C4-C5-C6-O6
2	O	1	NAG	O5-C5-C6-O6
2	O	1	NAG	C4-C5-C6-O6
2	O	2	NDG	C3-C2-N2-C7
3	M	2	NAG	O5-C5-C6-O6
3	P	2	NAG	C1-C2-N2-C7
3	M	2	NAG	C3-C2-N2-C7
3	P	2	NAG	C3-C2-N2-C7

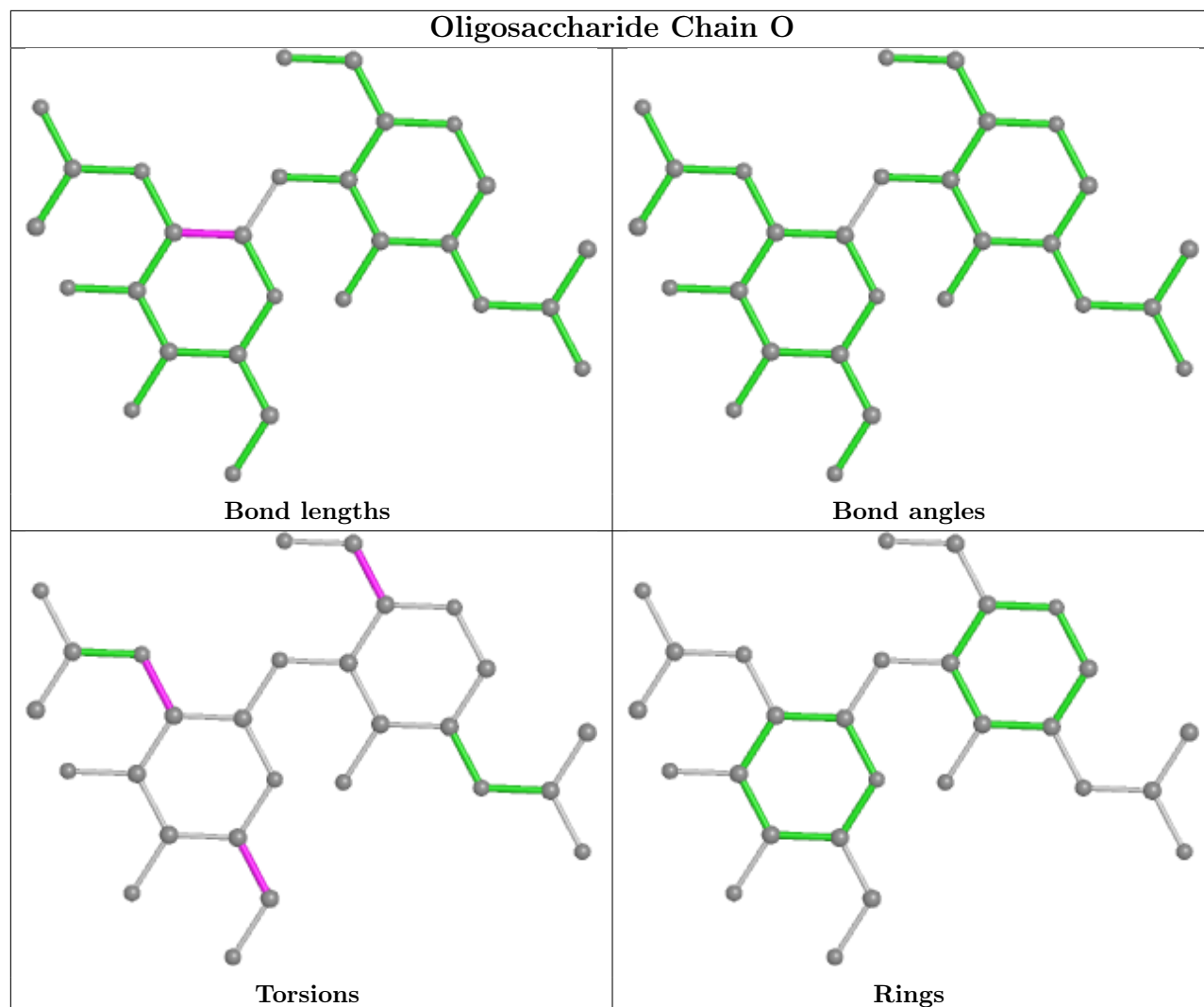
There are no ring outliers.

11 monomers are involved in 11 short contacts:

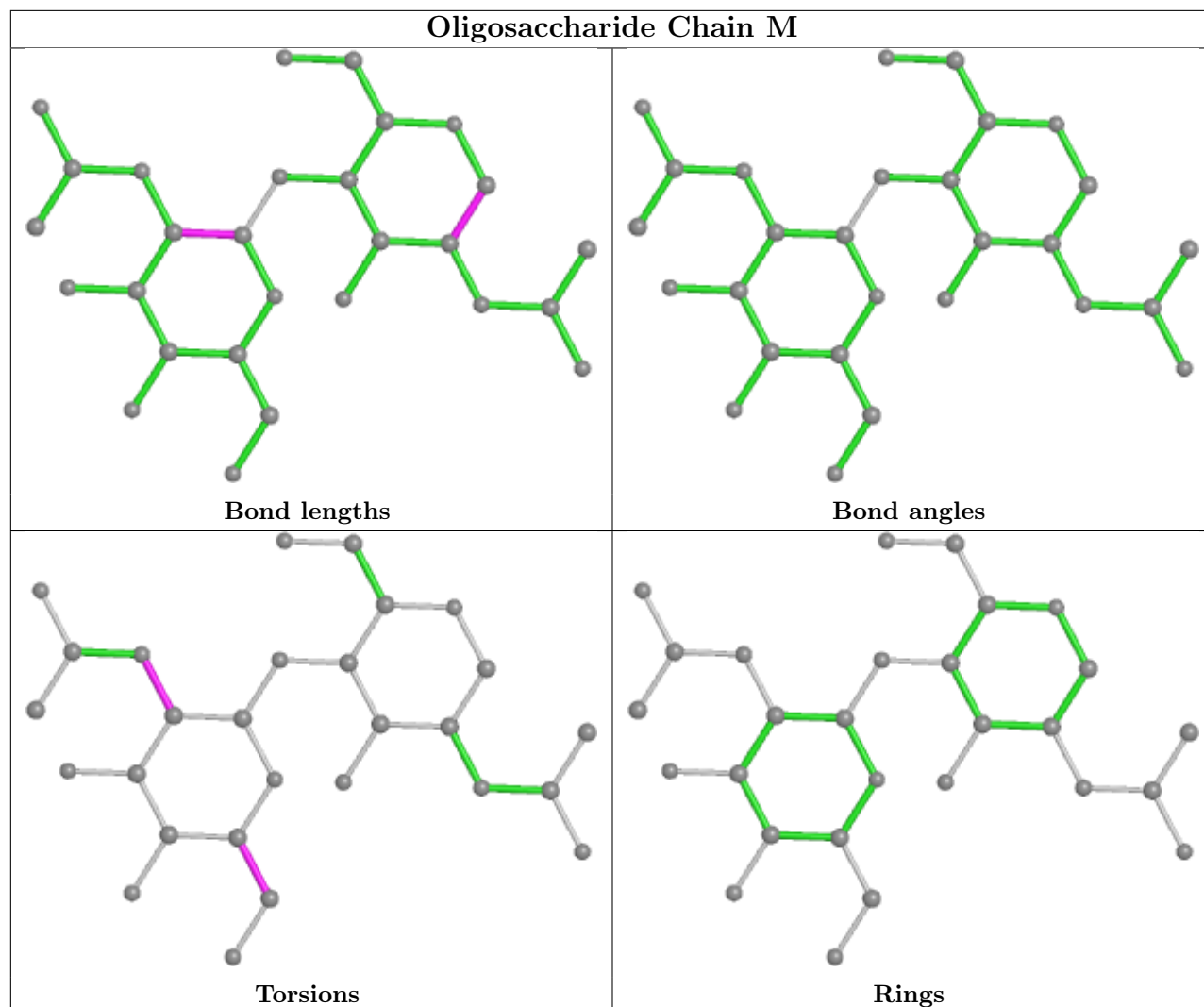
Mol	Chain	Res	Type	Clashes	Symm-Clashes
3	P	2	NAG	1	0
2	O	2	NDG	3	0
3	P	1	NAG	1	0
2	O	1	NAG	2	0
3	M	1	NAG	2	0
2	L	2	NDG	1	0
3	M	2	NAG	1	0
3	R	2	NAG	1	0
3	C	2	NAG	1	0
2	L	1	NAG	2	0
3	T	2	NAG	1	0

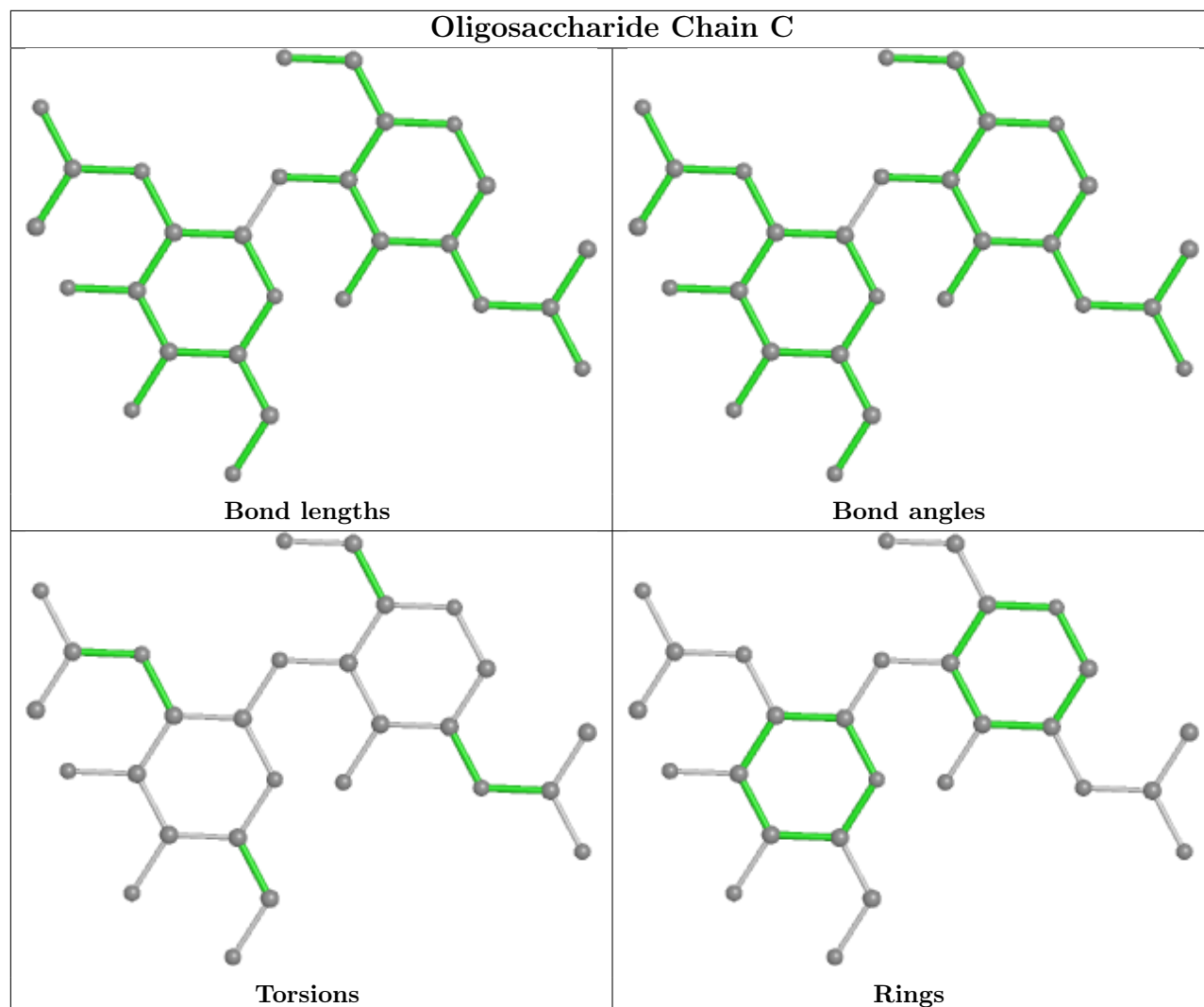
The following is a two-dimensional graphical depiction of Mogul quality analysis of bond lengths, bond angles, torsion angles, and ring geometry for oligosaccharide.

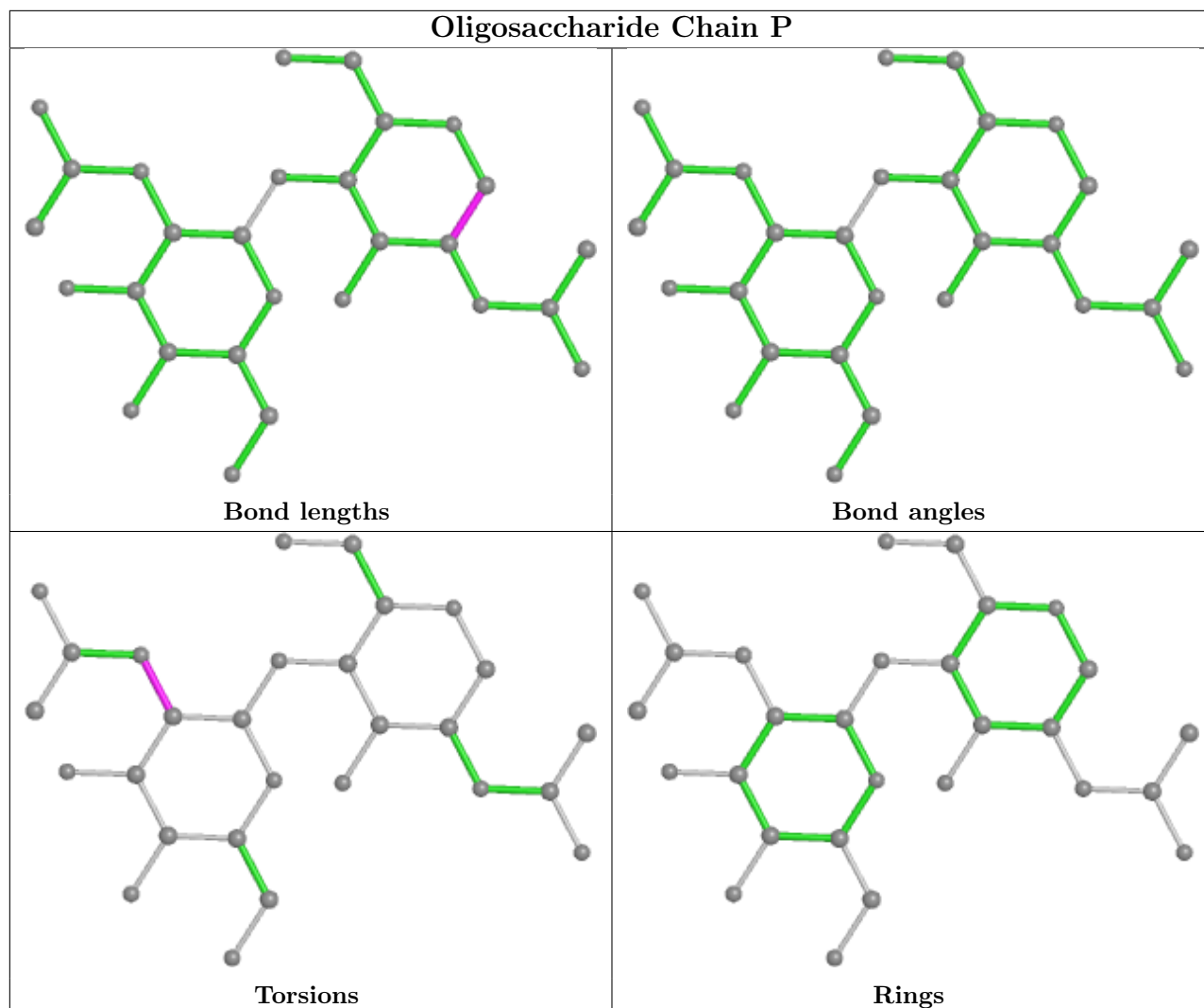


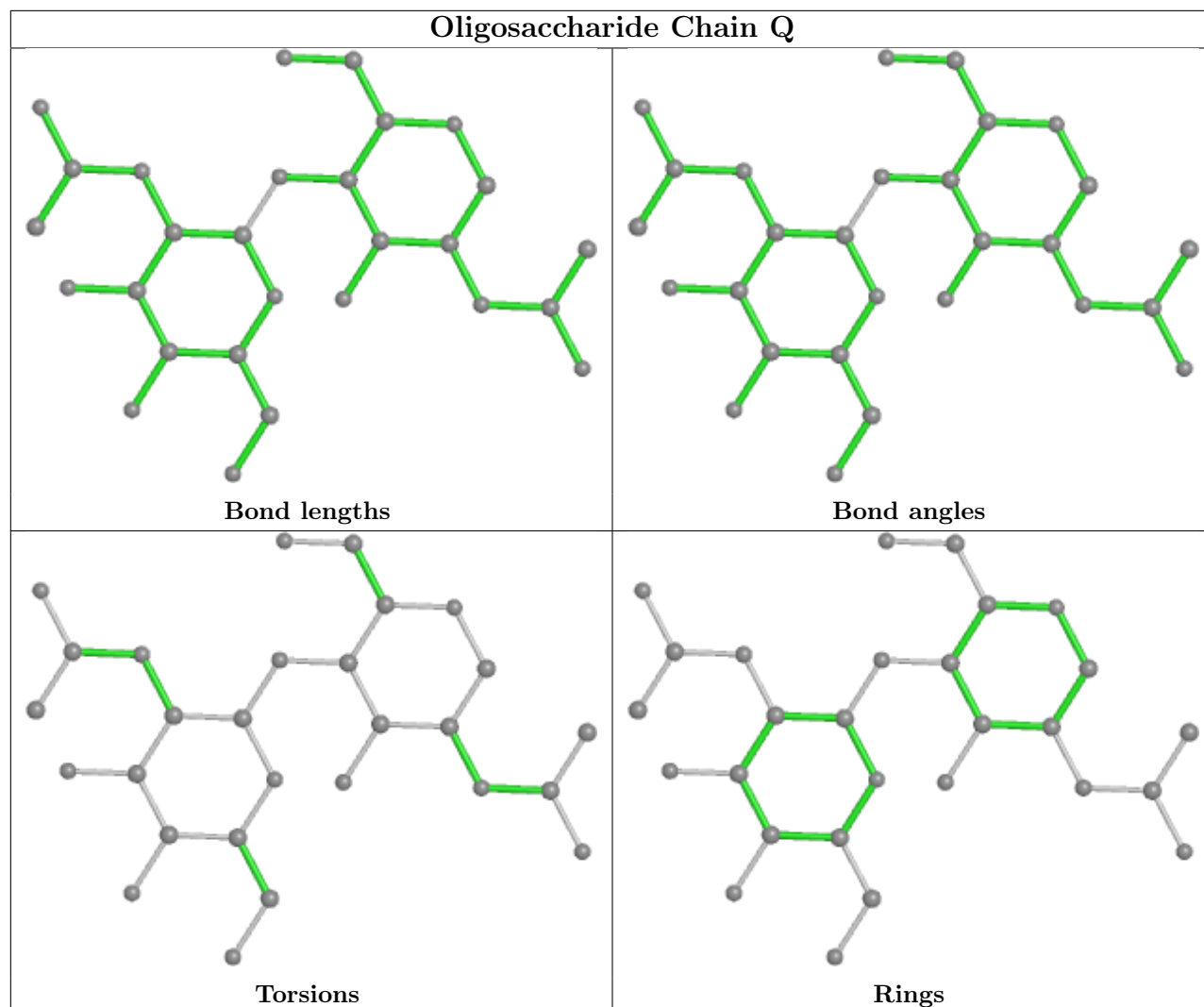


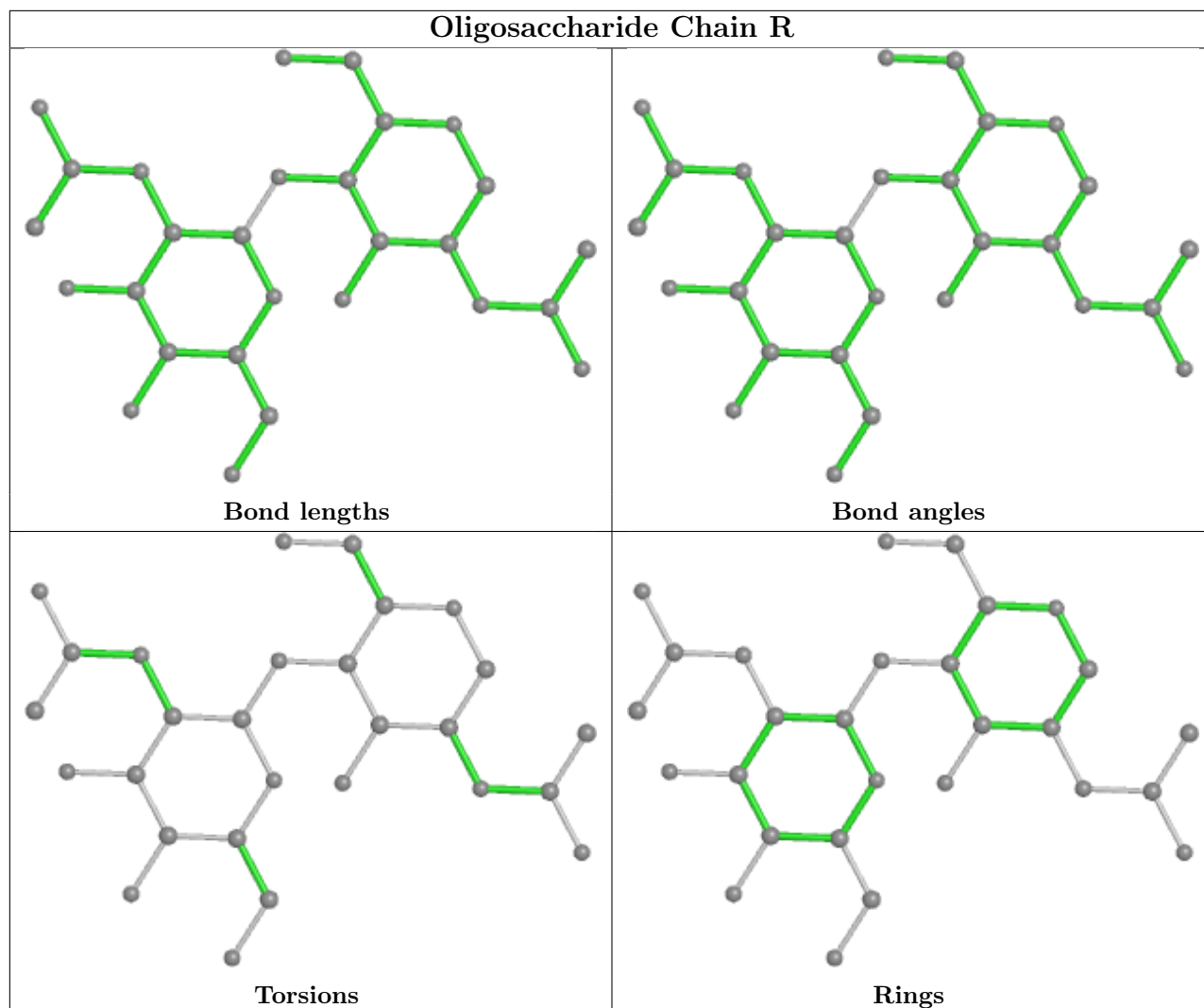


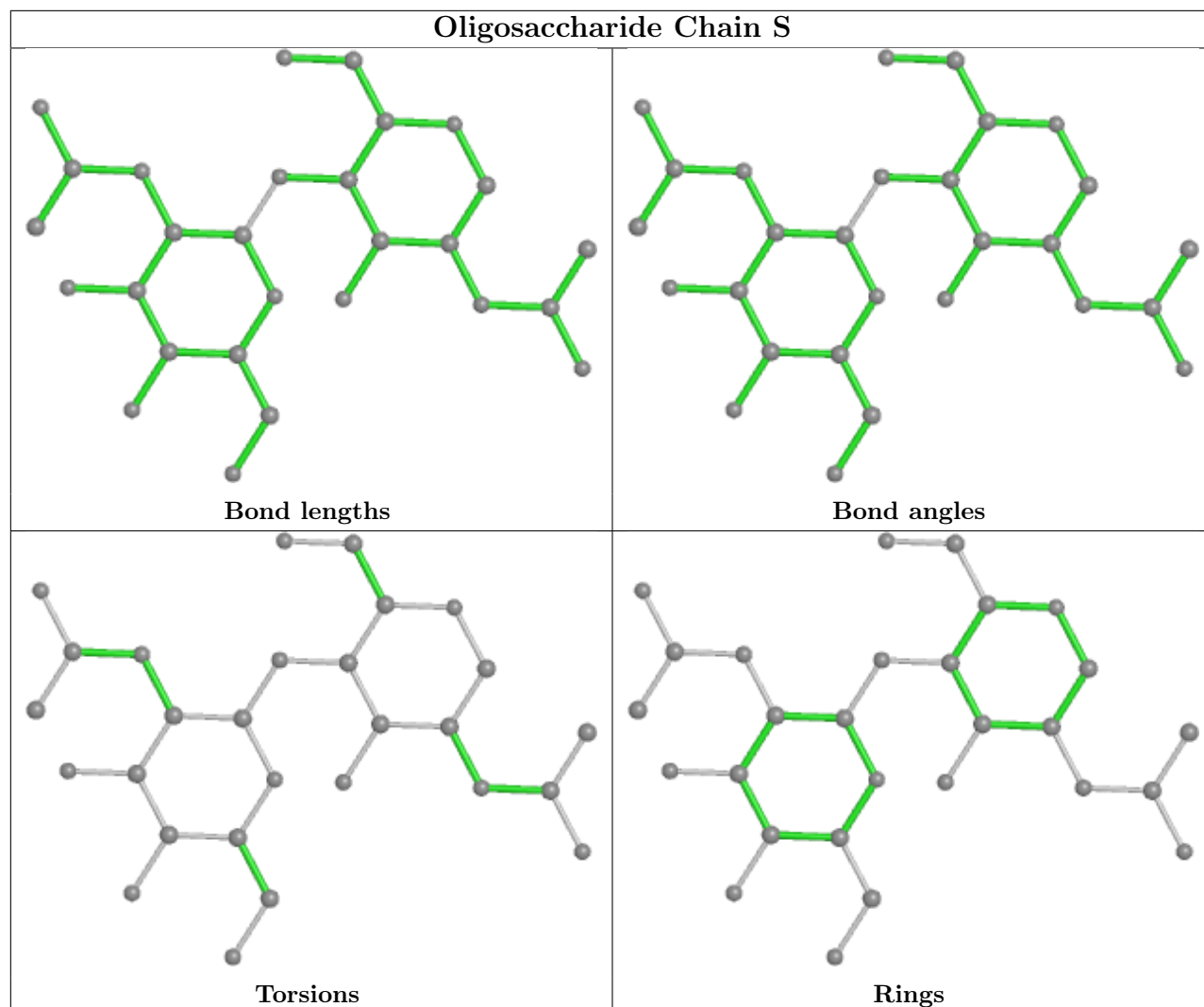


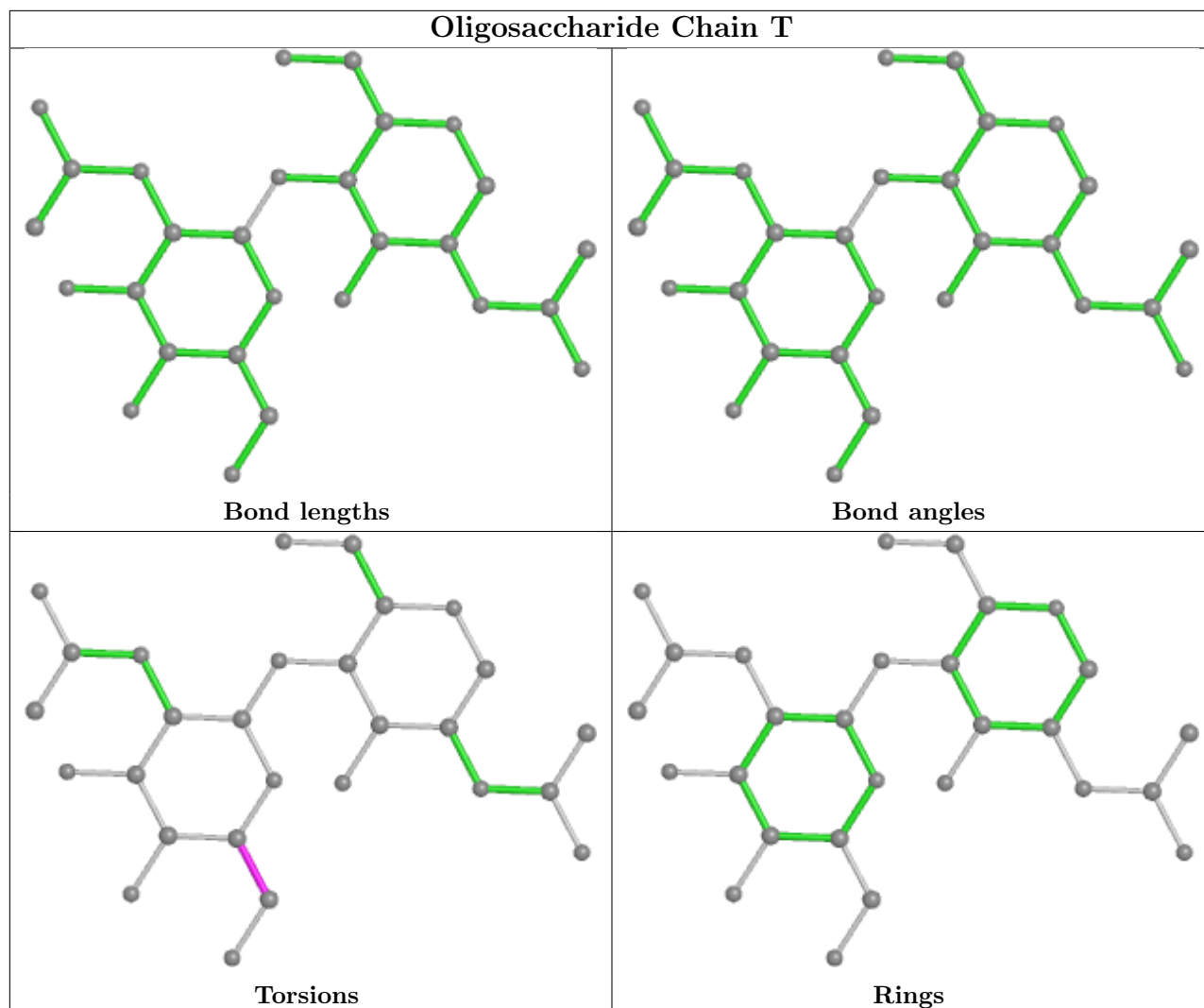












## 5.6 Ligand geometry [i](#)

Of 9 ligands modelled in this entry, 1 is monoatomic - leaving 8 for Mogul analysis.

In the following table, the Counts columns list the number of bonds (or angles) for which Mogul statistics could be retrieved, the number of bonds (or angles) that are observed in the model and the number of bonds (or angles) that are defined in the Chemical Component Dictionary. The Link column lists molecule types, if any, to which the group is linked. The Z score for a bond length (or angle) is the number of standard deviations the observed value is removed from the expected value. A bond length (or angle) with  $|Z| > 2$  is considered an outlier worth inspection. RMSZ is the root-mean-square of all Z scores of the bond lengths (or angles).

Mol	Type	Chain	Res	Link	Bond lengths			Bond angles		
					Counts	RMSZ	$\# Z  > 2$	Counts	RMSZ	$\# Z  > 2$
4	NAG	B	2321	1	14,14,15	0.62	0	17,19,21	0.92	1 (5%)
4	NAG	A	1520	1	14,14,15	0.80	0	17,19,21	0.72	0
4	NAG	A	1092	1	14,14,15	0.78	1 (7%)	17,19,21	0.77	0

Mol	Type	Chain	Res	Link	Bond lengths			Bond angles		
					Counts	RMSZ	# Z  > 2	Counts	RMSZ	# Z  > 2
4	NAG	A	1281	1	14,14,15	0.69	0	17,19,21	0.73	0
6	474	B	2322	-	29,35,35	2.55	9 (31%)	35,52,52	1.90	8 (22%)
6	474	A	1521	-	29,35,35	2.63	7 (24%)	35,52,52	2.00	9 (25%)
4	NAG	B	2092	1	14,14,15	0.72	0	17,19,21	0.70	0
4	NAG	B	2150	1	14,14,15	0.79	0	17,19,21	0.79	1 (5%)

In the following table, the Chirals column lists the number of chiral outliers, the number of chiral centers analysed, the number of these observed in the model and the number defined in the Chemical Component Dictionary. Similar counts are reported in the Torsion and Rings columns. '-' means no outliers of that kind were identified.

Mol	Type	Chain	Res	Link	Chirals	Torsions	Rings
4	NAG	B	2321	1	-	0/6/23/26	0/1/1/1
4	NAG	A	1520	1	-	2/6/23/26	0/1/1/1
4	NAG	A	1092	1	-	2/6/23/26	0/1/1/1
4	NAG	A	1281	1	-	0/6/23/26	0/1/1/1
6	474	B	2322	-	-	0/28/49/49	0/4/4/4
6	474	A	1521	-	-	0/28/49/49	0/4/4/4
4	NAG	B	2092	1	-	3/6/23/26	0/1/1/1
4	NAG	B	2150	1	-	1/6/23/26	0/1/1/1

All (17) bond length outliers are listed below:

Mol	Chain	Res	Type	Atoms	Z	Observed(Å)	Ideal(Å)
6	B	2322	474	C50-C51	7.82	1.51	1.39
6	A	1521	474	C50-C51	7.65	1.51	1.39
6	A	1521	474	C1-C5	-6.22	1.41	1.51
6	A	1521	474	C49-C48	6.06	1.49	1.40
6	B	2322	474	C1-C5	-5.40	1.43	1.51
6	B	2322	474	C49-C48	5.05	1.48	1.40
6	A	1521	474	C5-N9	4.33	1.40	1.34
6	B	2322	474	C5-N9	4.02	1.40	1.34
6	B	2322	474	C1-C32	3.27	1.61	1.54
6	A	1521	474	C1-C32	3.00	1.61	1.54
6	A	1521	474	C33-C32	2.86	1.59	1.53
6	B	2322	474	F62-C19	-2.67	1.33	1.38
6	A	1521	474	F62-C19	-2.57	1.33	1.38
6	B	2322	474	C1-C2	2.47	1.57	1.55
6	B	2322	474	C33-C32	2.44	1.58	1.53
6	B	2322	474	C34-C33	2.17	1.58	1.52
4	A	1092	NAG	C1-C2	2.13	1.55	1.52



All (19) bond angle outliers are listed below:

Mol	Chain	Res	Type	Atoms	Z	Observed(°)	Ideal(°)
6	A	1521	474	O8-C5-C1	-4.93	112.86	121.65
6	A	1521	474	C52-C51-C29	-4.87	105.38	120.46
6	B	2322	474	C52-C51-C29	-4.66	106.02	120.46
6	A	1521	474	C50-C51-C29	4.61	133.09	121.11
6	B	2322	474	C50-C51-C29	4.57	132.99	121.11
6	B	2322	474	O8-C5-C1	-4.50	113.62	121.65
6	B	2322	474	C20-C21-N4	-3.31	100.62	103.62
6	A	1521	474	C3-C2-N6	-3.27	105.24	110.22
6	A	1521	474	C20-C21-N4	-3.21	100.71	103.62
6	B	2322	474	C2-C1-C5	3.01	114.34	107.19
6	A	1521	474	C51-C52-N53	-2.65	117.30	123.35
6	A	1521	474	C2-C1-C5	2.61	113.39	107.19
6	B	2322	474	C34-C29-C51	-2.60	106.70	112.79
6	B	2322	474	C3-C2-N6	-2.49	106.42	110.22
6	A	1521	474	C34-C29-C51	-2.28	107.45	112.79
4	B	2321	NAG	C2-N2-C7	-2.28	119.66	122.90
4	B	2150	NAG	C2-N2-C7	-2.23	119.72	122.90
6	A	1521	474	C31-C30-C29	2.09	114.44	110.52
6	B	2322	474	C51-C52-N53	-2.08	118.60	123.35

There are no chirality outliers.

All (8) torsion outliers are listed below:

Mol	Chain	Res	Type	Atoms
4	B	2092	NAG	C1-C2-N2-C7
4	A	1092	NAG	O5-C5-C6-O6
4	A	1520	NAG	C1-C2-N2-C7
4	A	1092	NAG	C4-C5-C6-O6
4	B	2092	NAG	C4-C5-C6-O6
4	A	1520	NAG	C3-C2-N2-C7
4	B	2092	NAG	C3-C2-N2-C7
4	B	2150	NAG	C4-C5-C6-O6

There are no ring outliers.

5 monomers are involved in 11 short contacts:

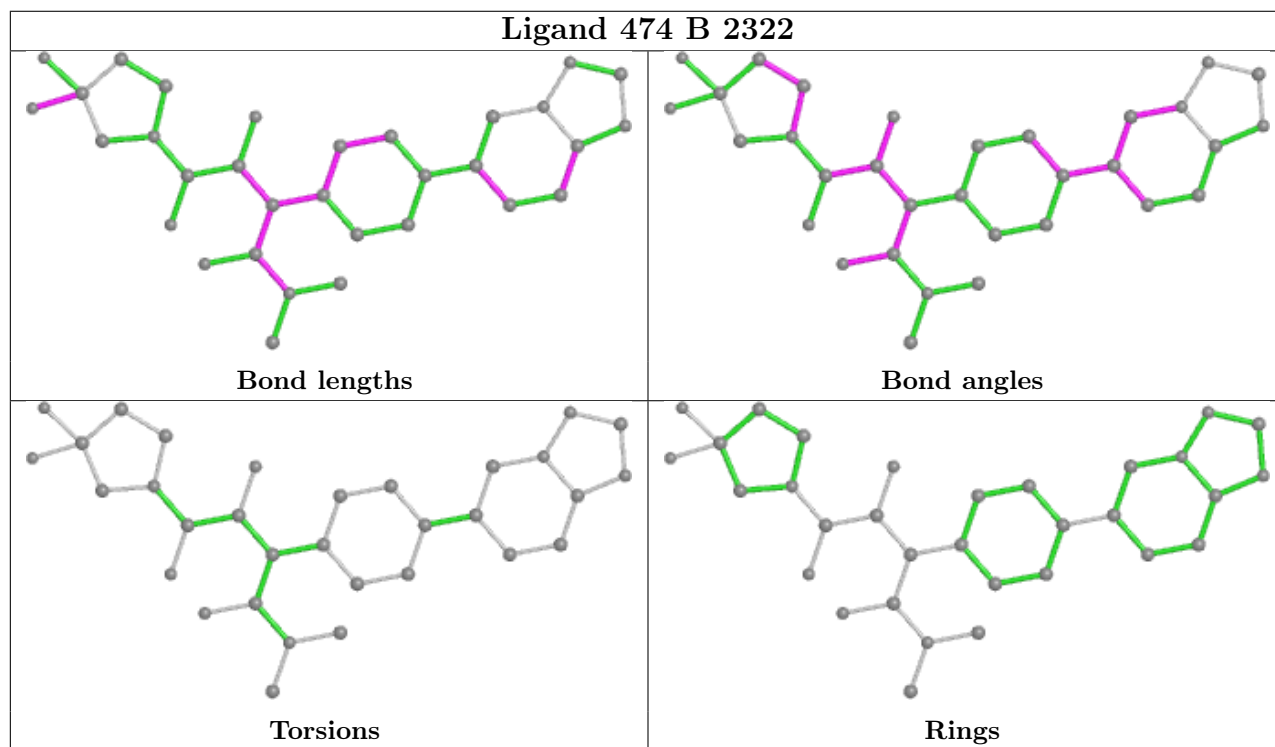
Mol	Chain	Res	Type	Clashes	Symm-Clashes
4	A	1520	NAG	2	0
4	A	1092	NAG	2	0
6	B	2322	474	5	0

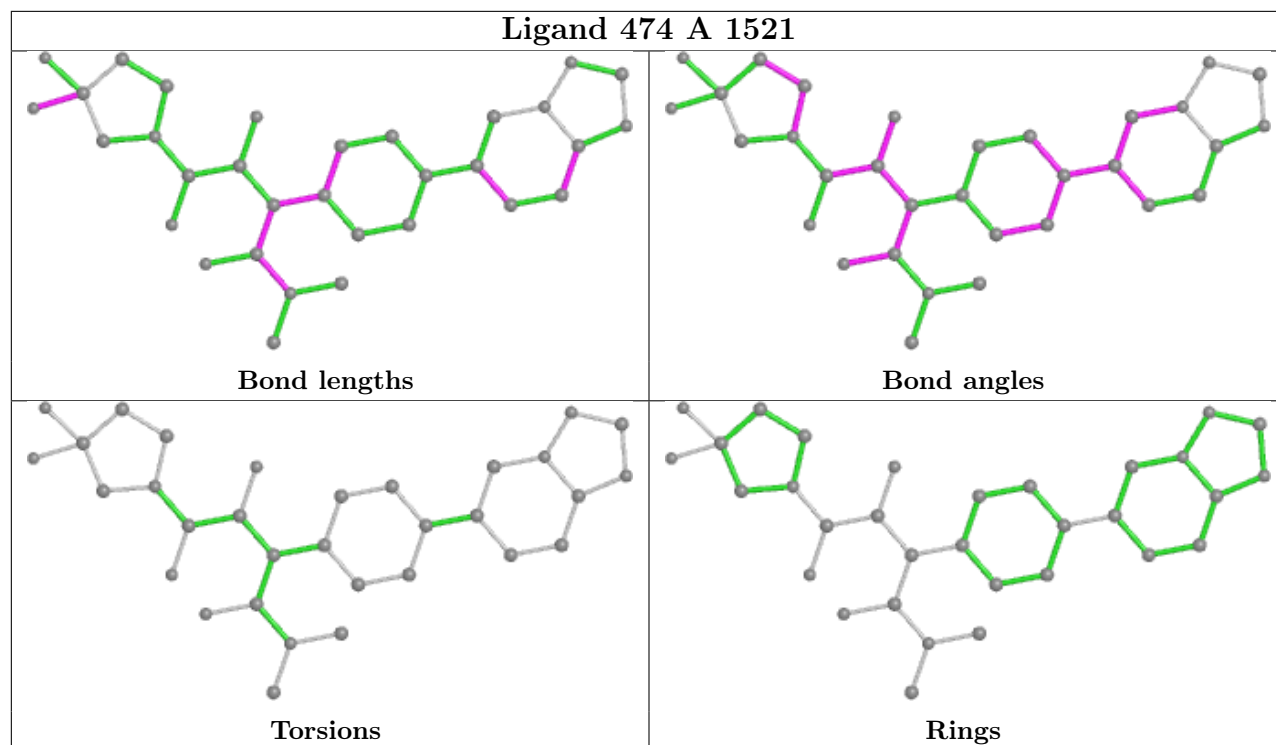
*Continued on next page...*

Continued from previous page...

Mol	Chain	Res	Type	Clashes	Symm-Clashes
6	A	1521	474	1	0
4	B	2092	NAG	1	0

The following is a two-dimensional graphical depiction of Mogul quality analysis of bond lengths, bond angles, torsion angles, and ring geometry for all instances of the Ligand of Interest. In addition, ligands with molecular weight > 250 and outliers as shown on the validation Tables will also be included. For torsion angles, if less than 5% of the Mogul distribution of torsion angles is within 10 degrees of the torsion angle in question, then that torsion angle is considered an outlier. Any bond that is central to one or more torsion angles identified as an outlier by Mogul will be highlighted in the graph. For rings, the root-mean-square deviation (RMSD) between the ring in question and similar rings identified by Mogul is calculated over all ring torsion angles. If the average RMSD is greater than 60 degrees and the minimal RMSD between the ring in question and any Mogul-identified rings is also greater than 60 degrees, then that ring is considered an outlier. The outliers are highlighted in purple. The color gray indicates Mogul did not find sufficient equivalents in the CSD to analyse the geometry.





## 5.7 Other polymers [\(i\)](#)

There are no such residues in this entry.

## 5.8 Polymer linkage issues [\(i\)](#)

There are no chain breaks in this entry.

## 6 Fit of model and data

### 6.1 Protein, DNA and RNA chains

In the following table, the column labelled ‘#RSRZ > 2’ contains the number (and percentage) of RSRZ outliers, followed by percent RSRZ outliers for the chain as percentile scores relative to all X-ray entries and entries of similar resolution. The OWAB column contains the minimum, median, 95<sup>th</sup> percentile and maximum values of the occupancy-weighted average B-factor per residue. The column labelled ‘Q < 0.9’ lists the number of (and percentage) of residues with an average occupancy less than 0.9.

Mol	Chain	Analysed	<RSRZ>	#RSRZ>2	OWAB(Å <sup>2</sup> )	Q<0.9
1	A	728/766 (95%)	-0.18	16 (2%) 62 65	13, 24, 45, 59	0
1	B	728/766 (95%)	-0.17	20 (2%) 54 57	13, 24, 43, 58	0
All	All	1456/1532 (95%)	-0.18	36 (2%) 57 60	13, 24, 44, 59	0

All (36) RSRZ outliers are listed below:

Mol	Chain	Res	Type	RSRZ
1	A	39	THR	6.2
1	A	92	ASN	4.4
1	A	97	GLU	4.0
1	B	74	ASN	4.0
1	B	73	GLU	3.9
1	B	766	PRO	3.9
1	A	766	PRO	3.9
1	B	39	THR	3.7
1	B	91	GLU	3.7
1	B	96	ASP	3.5
1	A	73	GLU	3.4
1	B	95	PHE	3.2
1	B	93	SER	3.2
1	A	96	ASP	3.1
1	B	88	VAL	3.1
1	B	97	GLU	2.9
1	A	138	ASN	2.8
1	A	40	ARG	2.8
1	B	138	ASN	2.8
1	A	74	ASN	2.6
1	B	92	ASN	2.6
1	B	506	ASN	2.6
1	B	94	THR	2.6
1	A	279	VAL	2.5

*Continued on next page...*

*Continued from previous page...*

Mol	Chain	Res	Type	RSRZ
1	A	333	SER	2.4
1	A	140	ARG	2.3
1	A	94	THR	2.3
1	B	71	LYS	2.3
1	A	137	LEU	2.3
1	A	99	GLY	2.2
1	B	98	PHE	2.2
1	A	98	PHE	2.1
1	B	76	ILE	2.1
1	B	502	LYS	2.1
1	B	140	ARG	2.0
1	B	75	ASN	2.0

## 6.2 Non-standard residues in protein, DNA, RNA chains [i](#)

There are no non-standard protein/DNA/RNA residues in this entry.

## 6.3 Carbohydrates [i](#)

In the following table, the Atoms column lists the number of modelled atoms in the group and the number defined in the chemical component dictionary. The B-factors column lists the minimum, median, 95<sup>th</sup> percentile and maximum values of B factors of atoms in the group. The column labelled 'Q<0.9' lists the number of atoms with occupancy less than 0.9.

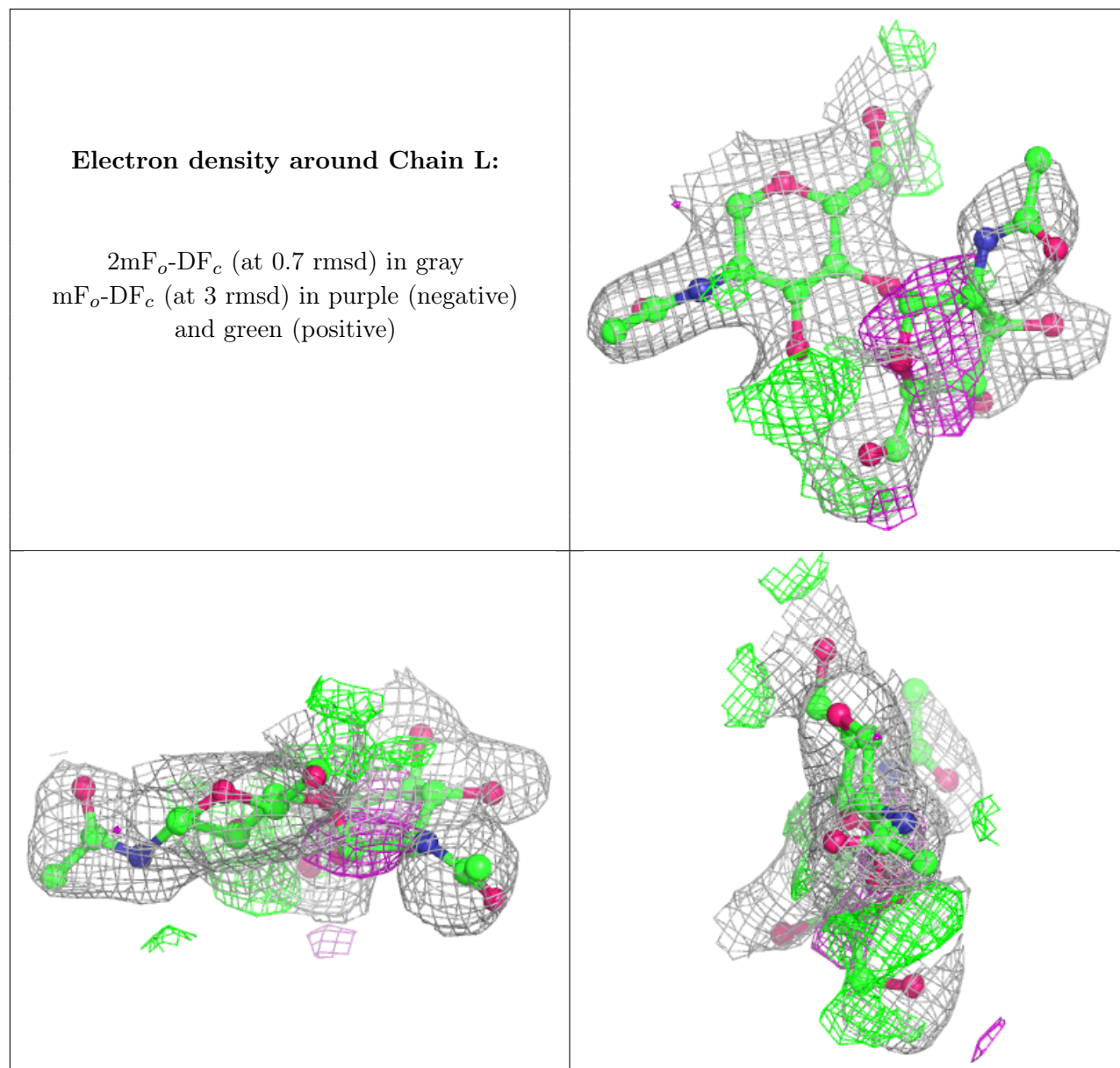
Mol	Type	Chain	Res	Atoms	RSCC	RSR	B-factors(Å <sup>2</sup> )	Q<0.9
2	NDG	L	2	14/15	0.41	0.38	55,57,58,59	0
3	NAG	Q	2	14/15	0.42	0.50	59,61,63,63	0
3	NAG	M	2	14/15	0.61	0.37	55,58,61,62	0
3	NAG	P	2	14/15	0.64	0.42	54,56,59,60	0
3	NAG	M	1	14/15	0.68	0.34	53,54,56,57	0
2	NDG	O	2	14/15	0.71	0.28	48,52,54,55	0
3	NAG	T	2	14/15	0.73	0.19	44,46,48,48	0
3	NAG	P	1	14/15	0.77	0.30	44,48,49,53	0
2	NAG	L	1	14/15	0.83	0.16	40,44,49,52	0
3	NAG	Q	1	14/15	0.84	0.20	46,50,54,57	0
3	NAG	C	2	14/15	0.90	0.23	44,47,49,50	0
3	NAG	R	2	14/15	0.90	0.18	41,42,46,46	0
3	NAG	C	1	14/15	0.90	0.16	39,42,44,44	0
3	NAG	S	2	14/15	0.91	0.26	43,45,47,48	0
3	NAG	T	1	14/15	0.93	0.12	30,31,38,40	0
3	NAG	R	1	14/15	0.94	0.15	32,37,40,41	0

*Continued on next page...*

Continued from previous page...

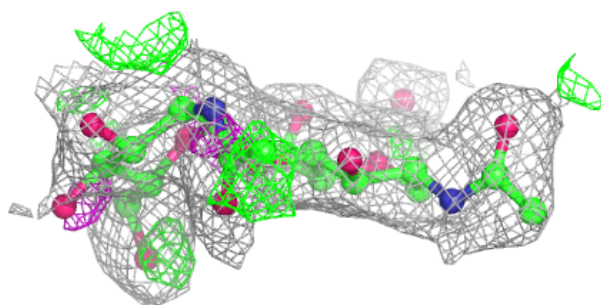
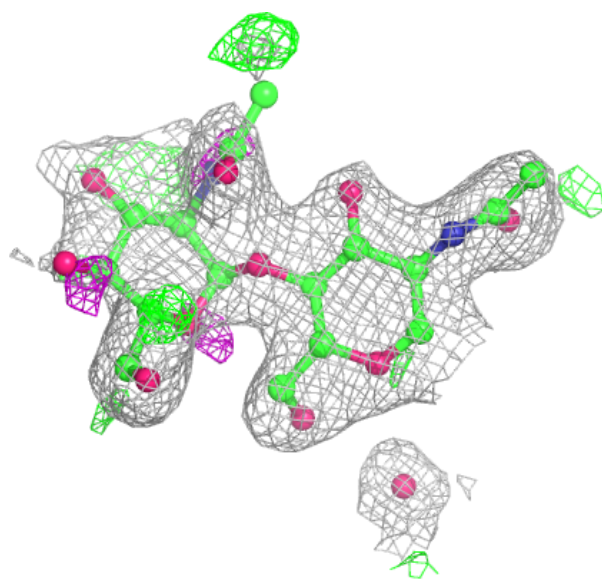
Mol	Type	Chain	Res	Atoms	RSCC	RSR	B-factors( $\text{\AA}^2$ )	Q<0.9
2	NAG	O	1	14/15	0.94	0.15	36,39,43,46	0
3	NAG	S	1	14/15	0.94	0.12	29,32,39,40	0

The following is a graphical depiction of the model fit to experimental electron density for oligosaccharide. Each fit is shown from different orientation to approximate a three-dimensional view.



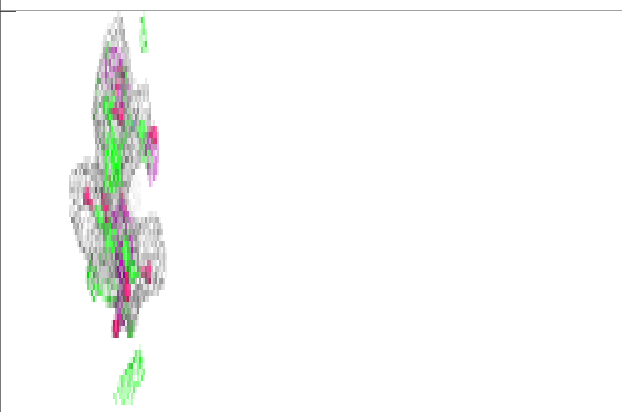
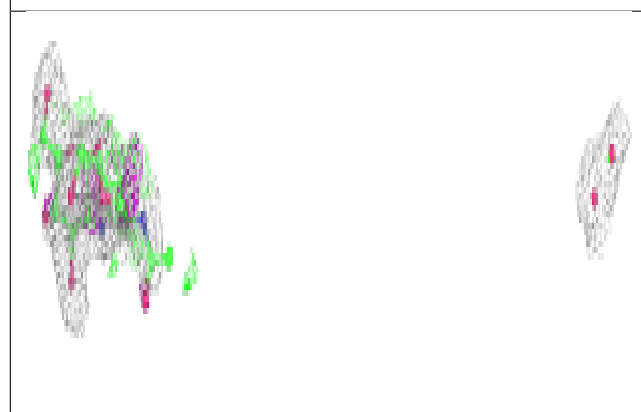
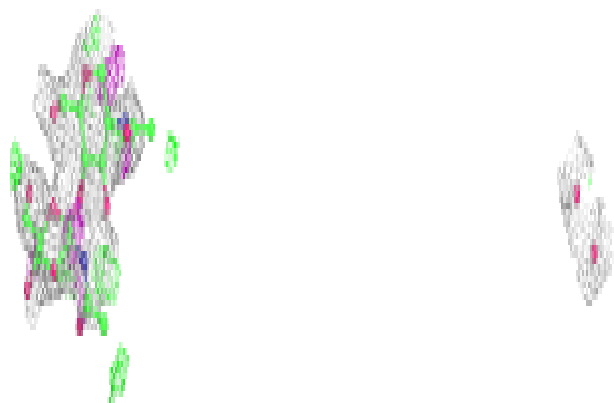
**Electron density around Chain O:**

$2mF_o-DF_c$  (at 0.7 rmsd) in gray  
 $mF_o-DF_c$  (at 3 rmsd) in purple (negative)  
and green (positive)

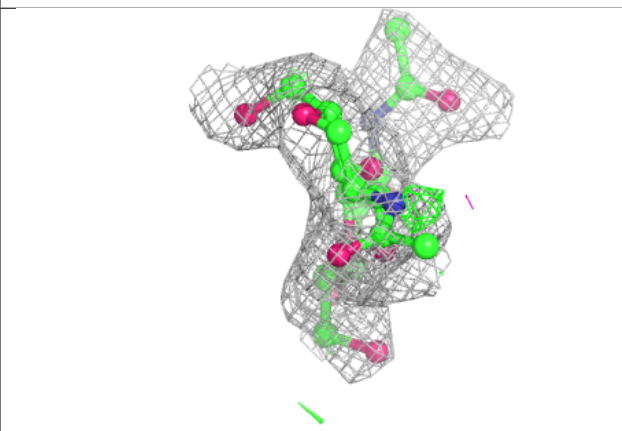
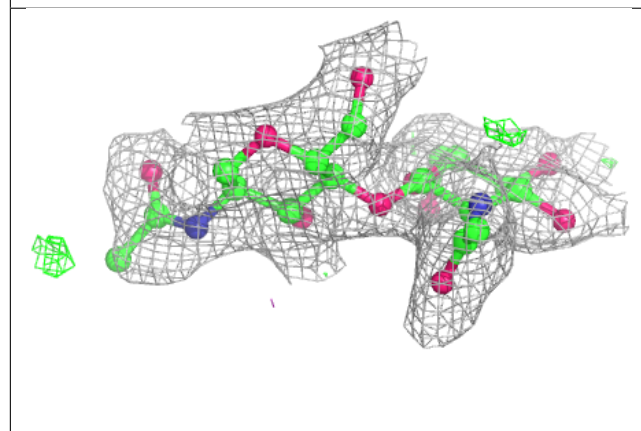
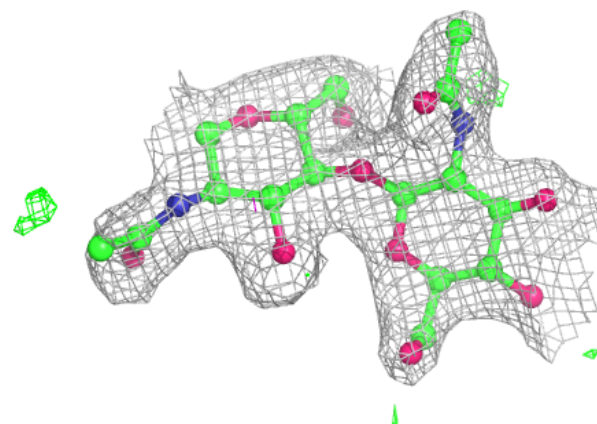


**Electron density around Chain M:**

$2mF_o-DF_c$  (at 0.7 rmsd) in gray  
 $mF_o-DF_c$  (at 3 rmsd) in purple (negative)  
and green (positive)

**Electron density around Chain C:**

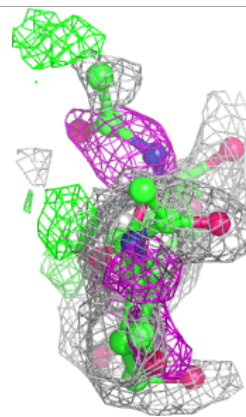
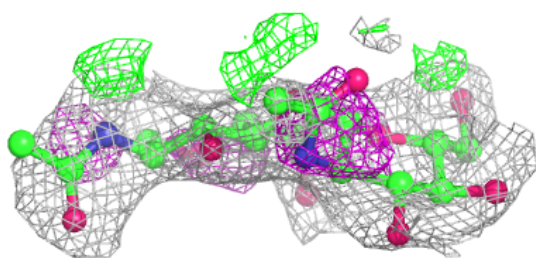
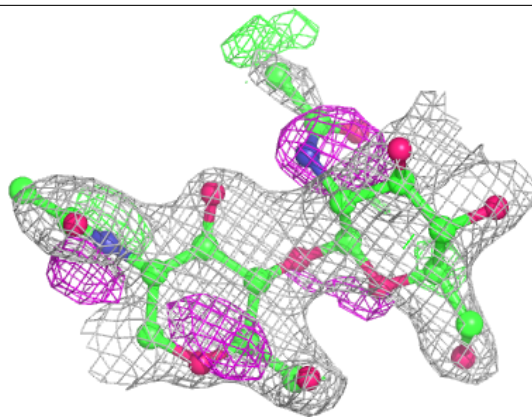
$2mF_o-DF_c$  (at 0.7 rmsd) in gray  
 $mF_o-DF_c$  (at 3 rmsd) in purple (negative)  
and green (positive)





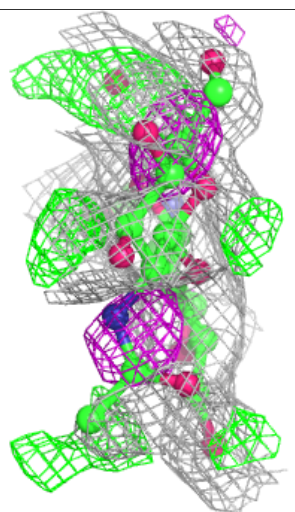
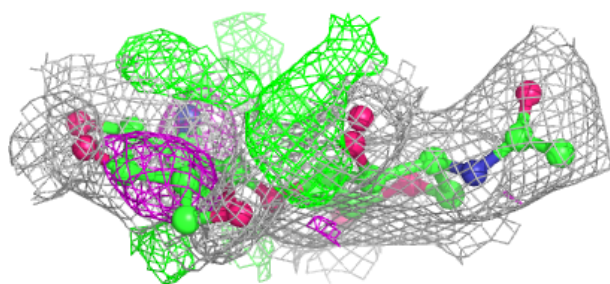
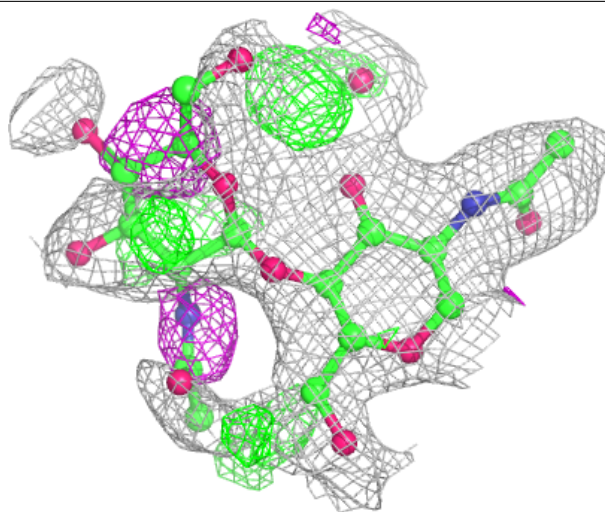
**Electron density around Chain P:**

$2mF_o-DF_c$  (at 0.7 rmsd) in gray  
 $mF_o-DF_c$  (at 3 rmsd) in purple (negative)  
and green (positive)



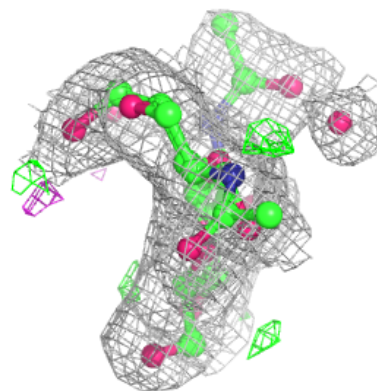
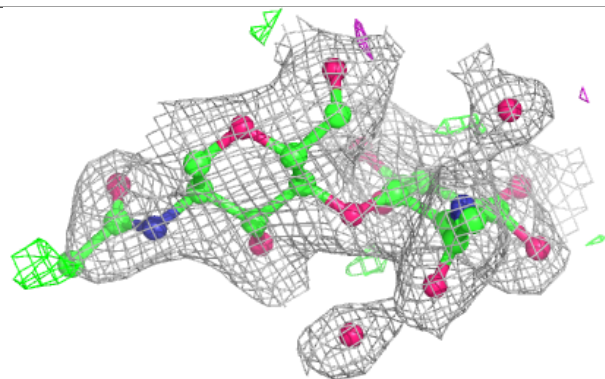
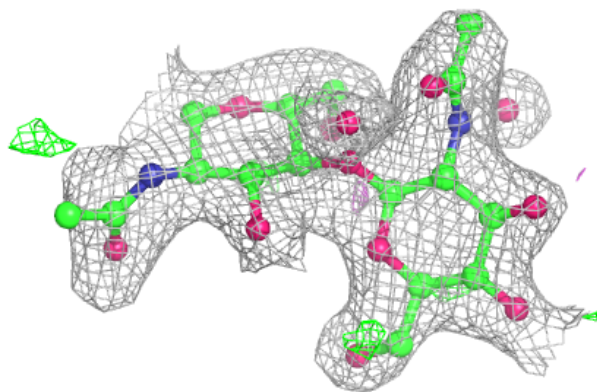
**Electron density around Chain Q:**

$2mF_o-DF_c$  (at 0.7 rmsd) in gray  
 $mF_o-DF_c$  (at 3 rmsd) in purple (negative)  
and green (positive)

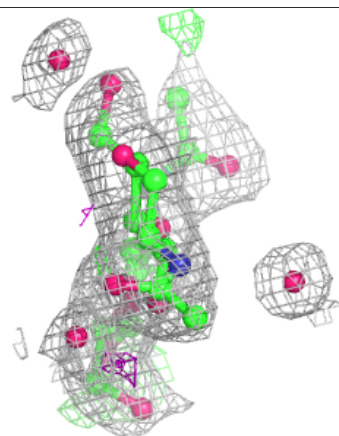
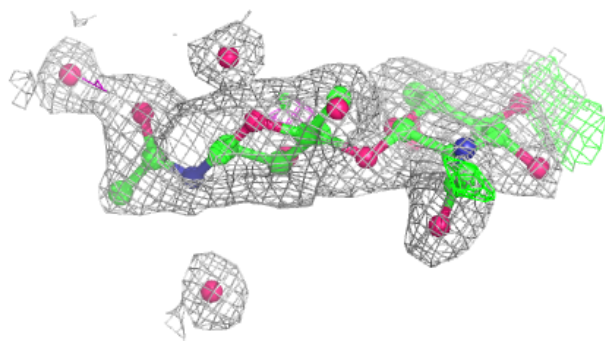
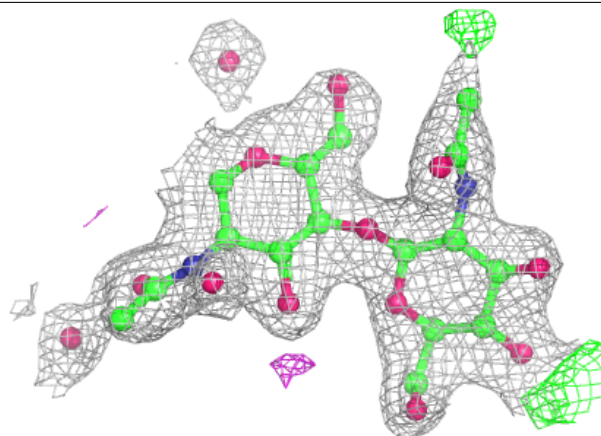


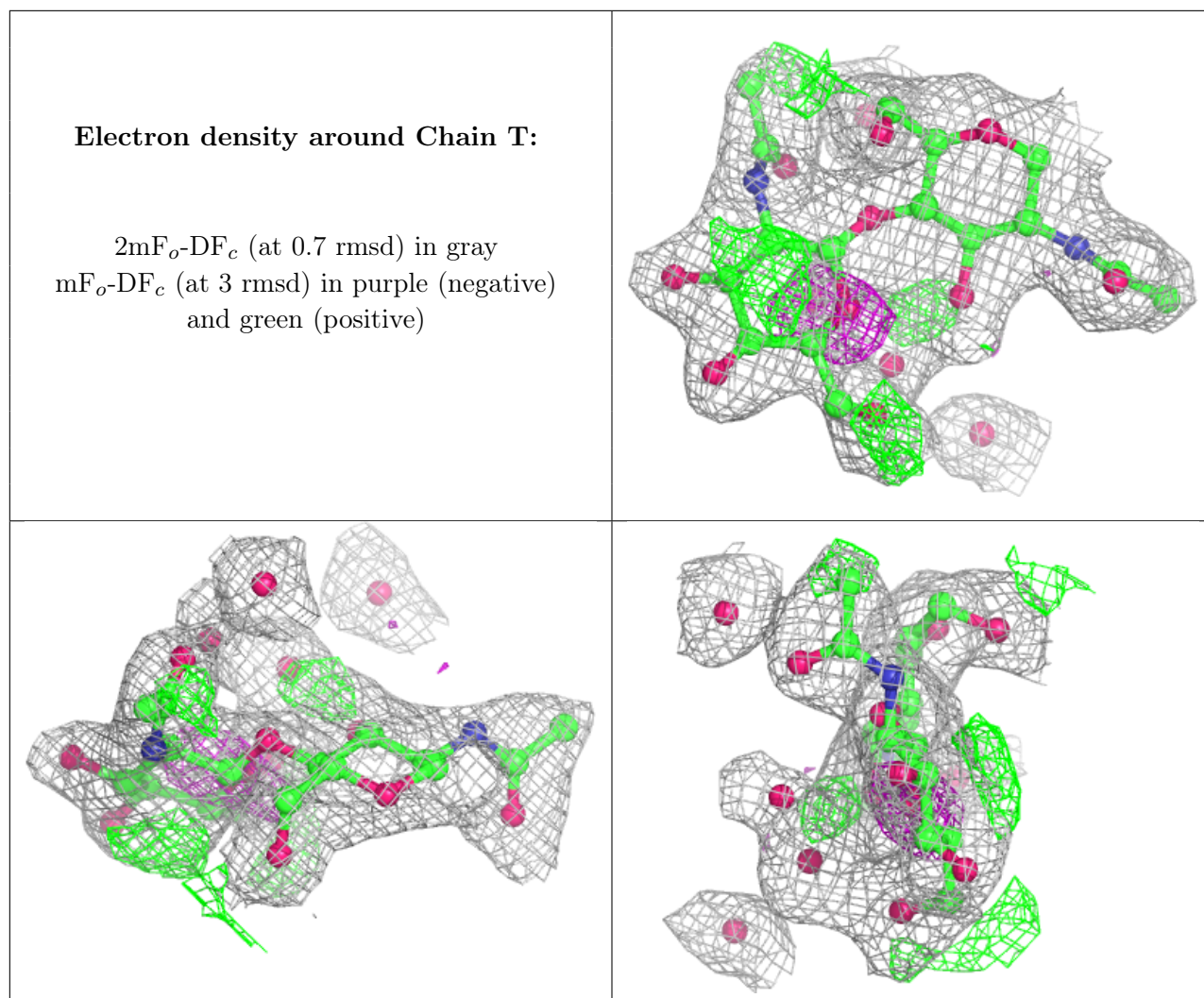
**Electron density around Chain R:**

$2mF_o-DF_c$  (at 0.7 rmsd) in gray  
 $mF_o-DF_c$  (at 3 rmsd) in purple (negative)  
and green (positive)

**Electron density around Chain S:**

$2mF_o-DF_c$  (at 0.7 rmsd) in gray  
 $mF_o-DF_c$  (at 3 rmsd) in purple (negative)  
and green (positive)



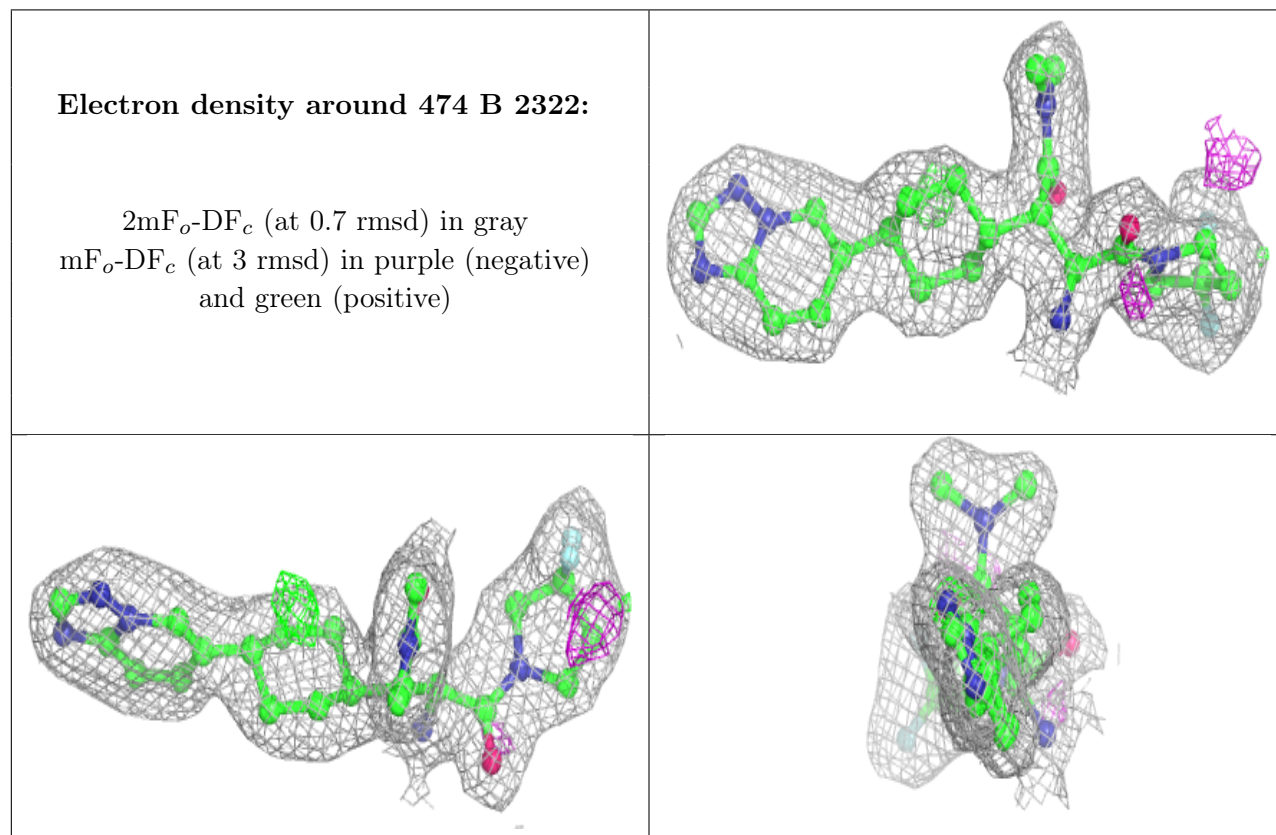


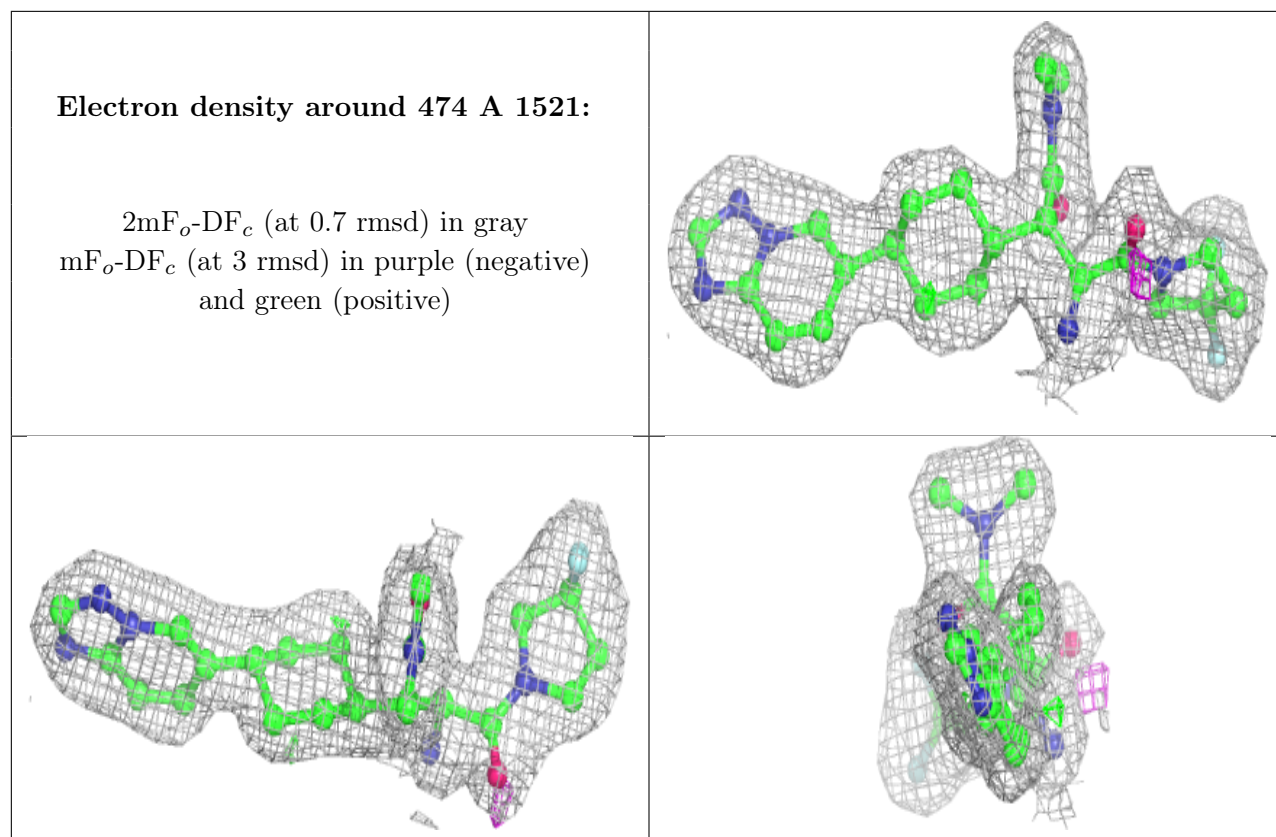
## 6.4 Ligands [i](#)

In the following table, the Atoms column lists the number of modelled atoms in the group and the number defined in the chemical component dictionary. The B-factors column lists the minimum, median, 95<sup>th</sup> percentile and maximum values of B factors of atoms in the group. The column labelled 'Q< 0.9' lists the number of atoms with occupancy less than 0.9.

Mol	Type	Chain	Res	Atoms	RSCC	RSR	B-factors(Å <sup>2</sup> )	Q<0.9
4	NAG	A	1092	14/15	0.58	0.48	59,59,61,61	0
4	NAG	A	1520	14/15	0.59	0.34	55,56,58,58	0
4	NAG	B	2092	14/15	0.72	0.39	55,57,58,59	0
4	NAG	A	1281	14/15	0.83	0.17	45,46,48,48	0
4	NAG	B	2150	14/15	0.83	0.32	46,49,51,52	0
4	NAG	B	2321	14/15	0.84	0.31	42,45,47,48	0
6	474	B	2322	32/32	0.95	0.19	17,19,22,25	0
6	474	A	1521	32/32	0.96	0.19	19,21,23,25	0
5	NA	A	1522	1/1	0.96	0.08	27,27,27,27	0

The following is a graphical depiction of the model fit to experimental electron density of all instances of the Ligand of Interest. In addition, ligands with molecular weight > 250 and outliers as shown on the geometry validation Tables will also be included. Each fit is shown from different orientation to approximate a three-dimensional view.





## 6.5 Other polymers [i](#)

There are no such residues in this entry.