



wwPDB X-ray Structure Validation Summary Report ⓘ

Nov 2, 2023 – 07:55 AM EDT

PDB ID : 3QNA
Title : Crystal structure of a 6-pyruvoyltetrahydropterin synthase homologue from Esherichia coli complexed sepiapterin
Authors : Seo, K.H.; Zhuang, N.N.; Lee, K.H.
Deposited on : 2011-02-08
Resolution : 2.50 Å(reported)

This is a wwPDB X-ray Structure Validation Summary Report for a publicly released PDB entry.

We welcome your comments at validation@mail.wwpdb.org

A user guide is available at

<https://www.wwpdb.org/validation/2017/XrayValidationReportHelp>

with specific help available everywhere you see the ⓘ symbol.

The types of validation reports are described at

<http://www.wwpdb.org/validation/2017/FAQs#types>.

The following versions of software and data (see [references ⓘ](#)) were used in the production of this report:

MolProbity : 4.02b-467
Mogul : 1.8.5 (274361), CSD as541be (2020)
Xtriage (Phenix) : 1.13
EDS : 2.36
Percentile statistics : 20191225.v01 (using entries in the PDB archive December 25th 2019)
Refmac : 5.8.0158
CCP4 : 7.0.044 (Gargrove)
Ideal geometry (proteins) : Engh & Huber (2001)
Ideal geometry (DNA, RNA) : Parkinson et al. (1996)
Validation Pipeline (wwPDB-VP) : 2.36

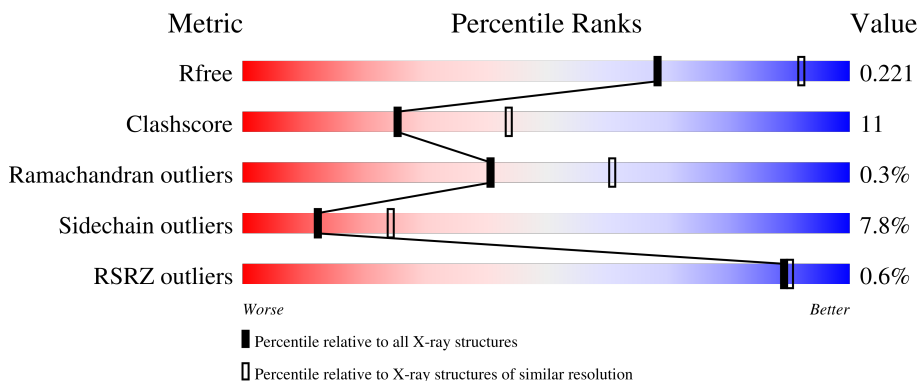
1 Overall quality at a glance i

The following experimental techniques were used to determine the structure:

X-RAY DIFFRACTION

The reported resolution of this entry is 2.50 Å.

Percentile scores (ranging between 0-100) for global validation metrics of the entry are shown in the following graphic. The table shows the number of entries on which the scores are based.



Metric	Whole archive (#Entries)	Similar resolution (#Entries, resolution range(Å))
R_{free}	130704	4661 (2.50-2.50)
Clashscore	141614	5346 (2.50-2.50)
Ramachandran outliers	138981	5231 (2.50-2.50)
Sidechain outliers	138945	5233 (2.50-2.50)
RSRZ outliers	127900	4559 (2.50-2.50)

The table below summarises the geometric issues observed across the polymeric chains and their fit to the electron density. The red, orange, yellow and green segments of the lower bar indicate the fraction of residues that contain outliers for ≥ 3 , 2, 1 and 0 types of geometric quality criteria respectively. A grey segment represents the fraction of residues that are not modelled. The numeric value for each fraction is indicated below the corresponding segment, with a dot representing fractions $\leq 5\%$. The upper red bar (where present) indicates the fraction of residues that have poor fit to the electron density. The numeric value is given above the bar.

Mol	Chain	Length	Quality of chain
1	A	141	<div style="display: flex; align-items: center;"> <div style="width: 10px; height: 10px; background-color: red; margin-right: 5px;"></div> <div style="width: 100%; height: 20px; position: relative;"> <div style="width: 67%; height: 100%; background-color: green;"></div> <div style="width: 14%; height: 100%; background-color: yellow;"></div> <div style="width: 16%; height: 100%; background-color: grey;"></div> </div> <div style="margin-left: 5px;">%</div> </div> <p style="text-align: center;">67% 14% • 16%</p>
1	B	141	<div style="display: flex; align-items: center;"> <div style="width: 10px; height: 10px; background-color: red; margin-right: 5px;"></div> <div style="width: 100%; height: 20px; position: relative;"> <div style="width: 65%; height: 100%; background-color: green;"></div> <div style="width: 15%; height: 100%; background-color: yellow;"></div> <div style="width: 16%; height: 100%; background-color: grey;"></div> </div> <div style="margin-left: 5px;">%</div> </div> <p style="text-align: center;">65% 15% • 16%</p>
1	C	141	<div style="display: flex; align-items: center;"> <div style="width: 100%; height: 20px; position: relative;"> <div style="width: 68%; height: 100%; background-color: green;"></div> <div style="width: 13%; height: 100%; background-color: yellow;"></div> <div style="width: 16%; height: 100%; background-color: grey;"></div> </div> <div style="margin-left: 5px;">%</div> </div> <p style="text-align: center;">68% 13% •• 16%</p>
1	D	141	<div style="display: flex; align-items: center;"> <div style="width: 10px; height: 10px; background-color: red; margin-right: 5px;"></div> <div style="width: 100%; height: 20px; position: relative;"> <div style="width: 71%; height: 100%; background-color: green;"></div> <div style="width: 11%; height: 100%; background-color: yellow;"></div> <div style="width: 16%; height: 100%; background-color: grey;"></div> </div> <div style="margin-left: 5px;">%</div> </div> <p style="text-align: center;">71% 11% •• 16%</p>
1	E	141	<div style="display: flex; align-items: center;"> <div style="width: 10px; height: 10px; background-color: red; margin-right: 5px;"></div> <div style="width: 100%; height: 20px; position: relative;"> <div style="width: 62%; height: 100%; background-color: green;"></div> <div style="width: 17%; height: 100%; background-color: yellow;"></div> <div style="width: 16%; height: 100%; background-color: grey;"></div> </div> <div style="margin-left: 5px;">%</div> </div> <p style="text-align: center;">62% 17% • 16%</p>

Continued on next page...

Continued from previous page...

Mol	Chain	Length	Quality of chain
1	F	141	 65% 16% .. 16%

The following table lists non-polymeric compounds, carbohydrate monomers and non-standard residues in protein, DNA, RNA chains that are outliers for geometric or electron-density-fit criteria:

Mol	Type	Chain	Res	Chirality	Geometry	Clashes	Electron density
2	BIO	A	121	-	-	X	-
2	BIO	B	121	-	-	X	-
2	BIO	C	121	-	-	X	-
2	BIO	E	121	-	-	X	-

2 Entry composition [i](#)

There are 4 unique types of molecules in this entry. The entry contains 5841 atoms, of which 0 are hydrogens and 0 are deuteriums.

In the tables below, the ZeroOcc column contains the number of atoms modelled with zero occupancy, the AltConf column contains the number of residues with at least one atom in alternate conformation and the Trace column contains the number of residues modelled with at most 2 atoms.

- Molecule 1 is a protein called 6-carboxy-5,6,7,8-tetrahydropterin synthase.

Mol	Chain	Residues	Atoms					ZeroOcc	AltConf	Trace
			Total	C	N	O	S			
1	A	118	943	610	162	167	4	0	0	0
1	B	118	943	610	162	167	4	0	0	0
1	C	118	943	610	162	167	4	0	0	0
1	D	118	943	610	162	167	4	0	0	0
1	E	118	943	610	162	167	4	0	0	0
1	F	118	943	610	162	167	4	0	0	0

There are 126 discrepancies between the modelled and reference sequences:

Chain	Residue	Modelled	Actual	Comment	Reference
A	-20	MET	-	expression tag	UNP C6EJA7
A	-19	GLY	-	expression tag	UNP C6EJA7
A	-18	SER	-	expression tag	UNP C6EJA7
A	-17	SER	-	expression tag	UNP C6EJA7
A	-16	HIS	-	expression tag	UNP C6EJA7
A	-15	HIS	-	expression tag	UNP C6EJA7
A	-14	HIS	-	expression tag	UNP C6EJA7
A	-13	HIS	-	expression tag	UNP C6EJA7
A	-12	HIS	-	expression tag	UNP C6EJA7
A	-11	HIS	-	expression tag	UNP C6EJA7
A	-10	SER	-	expression tag	UNP C6EJA7
A	-9	SER	-	expression tag	UNP C6EJA7
A	-8	GLY	-	expression tag	UNP C6EJA7
A	-7	LEU	-	expression tag	UNP C6EJA7
A	-6	VAL	-	expression tag	UNP C6EJA7
A	-5	PRO	-	expression tag	UNP C6EJA7
A	-4	ARG	-	expression tag	UNP C6EJA7

Continued on next page...

Continued from previous page...

Chain	Residue	Modelled	Actual	Comment	Reference
A	-3	GLY	-	expression tag	UNP C6EJA7
A	-2	SER	-	expression tag	UNP C6EJA7
A	-1	HIS	-	expression tag	UNP C6EJA7
A	26	ALA	CYS	engineered mutation	UNP C6EJA7
B	-20	MET	-	expression tag	UNP C6EJA7
B	-19	GLY	-	expression tag	UNP C6EJA7
B	-18	SER	-	expression tag	UNP C6EJA7
B	-17	SER	-	expression tag	UNP C6EJA7
B	-16	HIS	-	expression tag	UNP C6EJA7
B	-15	HIS	-	expression tag	UNP C6EJA7
B	-14	HIS	-	expression tag	UNP C6EJA7
B	-13	HIS	-	expression tag	UNP C6EJA7
B	-12	HIS	-	expression tag	UNP C6EJA7
B	-11	HIS	-	expression tag	UNP C6EJA7
B	-10	SER	-	expression tag	UNP C6EJA7
B	-9	SER	-	expression tag	UNP C6EJA7
B	-8	GLY	-	expression tag	UNP C6EJA7
B	-7	LEU	-	expression tag	UNP C6EJA7
B	-6	VAL	-	expression tag	UNP C6EJA7
B	-5	PRO	-	expression tag	UNP C6EJA7
B	-4	ARG	-	expression tag	UNP C6EJA7
B	-3	GLY	-	expression tag	UNP C6EJA7
B	-2	SER	-	expression tag	UNP C6EJA7
B	-1	HIS	-	expression tag	UNP C6EJA7
B	26	ALA	CYS	engineered mutation	UNP C6EJA7
C	-20	MET	-	expression tag	UNP C6EJA7
C	-19	GLY	-	expression tag	UNP C6EJA7
C	-18	SER	-	expression tag	UNP C6EJA7
C	-17	SER	-	expression tag	UNP C6EJA7
C	-16	HIS	-	expression tag	UNP C6EJA7
C	-15	HIS	-	expression tag	UNP C6EJA7
C	-14	HIS	-	expression tag	UNP C6EJA7
C	-13	HIS	-	expression tag	UNP C6EJA7
C	-12	HIS	-	expression tag	UNP C6EJA7
C	-11	HIS	-	expression tag	UNP C6EJA7
C	-10	SER	-	expression tag	UNP C6EJA7
C	-9	SER	-	expression tag	UNP C6EJA7
C	-8	GLY	-	expression tag	UNP C6EJA7
C	-7	LEU	-	expression tag	UNP C6EJA7
C	-6	VAL	-	expression tag	UNP C6EJA7
C	-5	PRO	-	expression tag	UNP C6EJA7
C	-4	ARG	-	expression tag	UNP C6EJA7

Continued on next page...

Continued from previous page...

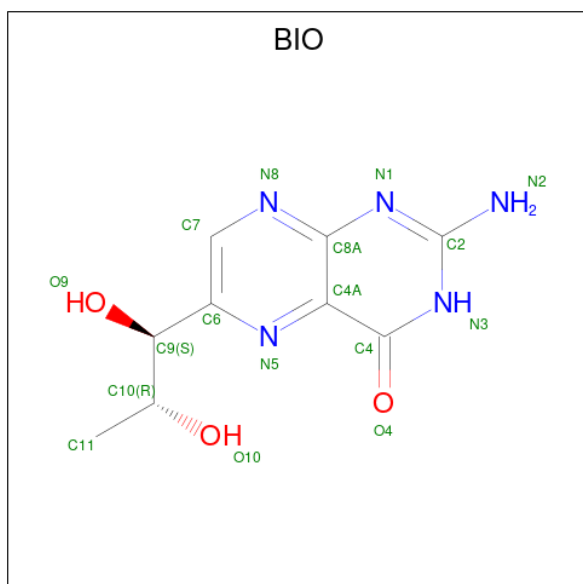
Chain	Residue	Modelled	Actual	Comment	Reference
C	-3	GLY	-	expression tag	UNP C6EJA7
C	-2	SER	-	expression tag	UNP C6EJA7
C	-1	HIS	-	expression tag	UNP C6EJA7
C	26	ALA	CYS	engineered mutation	UNP C6EJA7
D	-20	MET	-	expression tag	UNP C6EJA7
D	-19	GLY	-	expression tag	UNP C6EJA7
D	-18	SER	-	expression tag	UNP C6EJA7
D	-17	SER	-	expression tag	UNP C6EJA7
D	-16	HIS	-	expression tag	UNP C6EJA7
D	-15	HIS	-	expression tag	UNP C6EJA7
D	-14	HIS	-	expression tag	UNP C6EJA7
D	-13	HIS	-	expression tag	UNP C6EJA7
D	-12	HIS	-	expression tag	UNP C6EJA7
D	-11	HIS	-	expression tag	UNP C6EJA7
D	-10	SER	-	expression tag	UNP C6EJA7
D	-9	SER	-	expression tag	UNP C6EJA7
D	-8	GLY	-	expression tag	UNP C6EJA7
D	-7	LEU	-	expression tag	UNP C6EJA7
D	-6	VAL	-	expression tag	UNP C6EJA7
D	-5	PRO	-	expression tag	UNP C6EJA7
D	-4	ARG	-	expression tag	UNP C6EJA7
D	-3	GLY	-	expression tag	UNP C6EJA7
D	-2	SER	-	expression tag	UNP C6EJA7
D	-1	HIS	-	expression tag	UNP C6EJA7
D	26	ALA	CYS	engineered mutation	UNP C6EJA7
E	-20	MET	-	expression tag	UNP C6EJA7
E	-19	GLY	-	expression tag	UNP C6EJA7
E	-18	SER	-	expression tag	UNP C6EJA7
E	-17	SER	-	expression tag	UNP C6EJA7
E	-16	HIS	-	expression tag	UNP C6EJA7
E	-15	HIS	-	expression tag	UNP C6EJA7
E	-14	HIS	-	expression tag	UNP C6EJA7
E	-13	HIS	-	expression tag	UNP C6EJA7
E	-12	HIS	-	expression tag	UNP C6EJA7
E	-11	HIS	-	expression tag	UNP C6EJA7
E	-10	SER	-	expression tag	UNP C6EJA7
E	-9	SER	-	expression tag	UNP C6EJA7
E	-8	GLY	-	expression tag	UNP C6EJA7
E	-7	LEU	-	expression tag	UNP C6EJA7
E	-6	VAL	-	expression tag	UNP C6EJA7
E	-5	PRO	-	expression tag	UNP C6EJA7
E	-4	ARG	-	expression tag	UNP C6EJA7

Continued on next page...

Continued from previous page...

Chain	Residue	Modelled	Actual	Comment	Reference
E	-3	GLY	-	expression tag	UNP C6EJA7
E	-2	SER	-	expression tag	UNP C6EJA7
E	-1	HIS	-	expression tag	UNP C6EJA7
E	26	ALA	CYS	engineered mutation	UNP C6EJA7
F	-20	MET	-	expression tag	UNP C6EJA7
F	-19	GLY	-	expression tag	UNP C6EJA7
F	-18	SER	-	expression tag	UNP C6EJA7
F	-17	SER	-	expression tag	UNP C6EJA7
F	-16	HIS	-	expression tag	UNP C6EJA7
F	-15	HIS	-	expression tag	UNP C6EJA7
F	-14	HIS	-	expression tag	UNP C6EJA7
F	-13	HIS	-	expression tag	UNP C6EJA7
F	-12	HIS	-	expression tag	UNP C6EJA7
F	-11	HIS	-	expression tag	UNP C6EJA7
F	-10	SER	-	expression tag	UNP C6EJA7
F	-9	SER	-	expression tag	UNP C6EJA7
F	-8	GLY	-	expression tag	UNP C6EJA7
F	-7	LEU	-	expression tag	UNP C6EJA7
F	-6	VAL	-	expression tag	UNP C6EJA7
F	-5	PRO	-	expression tag	UNP C6EJA7
F	-4	ARG	-	expression tag	UNP C6EJA7
F	-3	GLY	-	expression tag	UNP C6EJA7
F	-2	SER	-	expression tag	UNP C6EJA7
F	-1	HIS	-	expression tag	UNP C6EJA7
F	26	ALA	CYS	engineered mutation	UNP C6EJA7

- Molecule 2 is BIOPTERIN (three-letter code: BIO) (formula: C₉H₁₁N₅O₃).



Mol	Chain	Residues	Atoms				ZeroOcc	AltConf
2	A	1	Total	C	N	O	0	0
			17	9	5	3		
2	B	1	Total	C	N	O	0	0
			17	9	5	3		
2	C	1	Total	C	N	O	0	0
			17	9	5	3		
2	D	1	Total	C	N	O	0	0
			17	9	5	3		
2	E	1	Total	C	N	O	0	0
			17	9	5	3		
2	F	1	Total	C	N	O	0	0
			17	9	5	3		

- Molecule 3 is ZINC ION (three-letter code: ZN) (formula: Zn).

Mol	Chain	Residues	Atoms		ZeroOcc	AltConf
3	A	1	Total	Zn	0	0
			1	1		
3	B	1	Total	Zn	0	0
			1	1		
3	C	1	Total	Zn	0	0
			1	1		
3	D	1	Total	Zn	0	0
			1	1		
3	E	1	Total	Zn	0	0
			1	1		
3	F	1	Total	Zn	0	0
			1	1		

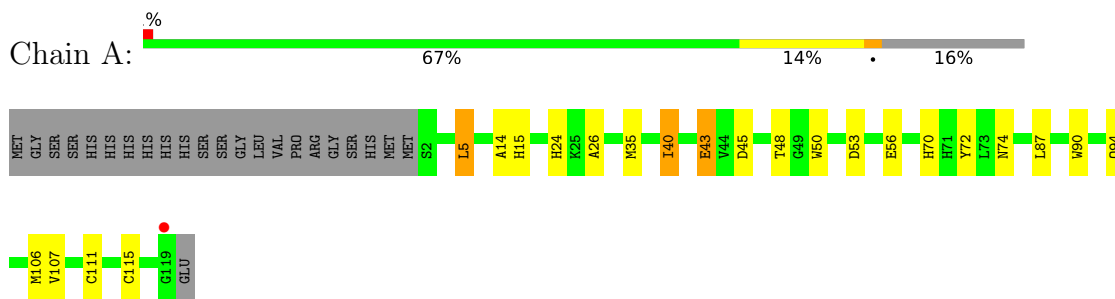
- Molecule 4 is water.

Mol	Chain	Residues	Atoms		ZeroOcc	AltConf
4	A	12	Total	O	0	0
			12	12		
4	B	20	Total	O	0	0
			20	20		
4	C	13	Total	O	0	0
			13	13		
4	D	11	Total	O	0	0
			11	11		
4	E	7	Total	O	0	0
			7	7		
4	F	12	Total	O	0	0
			12	12		

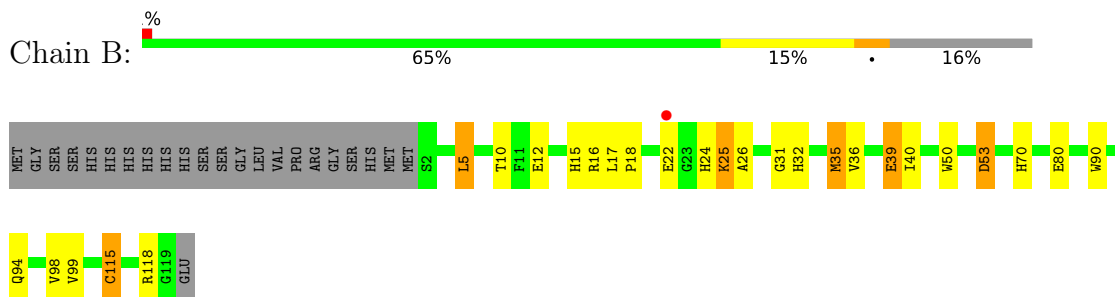
3 Residue-property plots [i](#)

These plots are drawn for all protein, RNA, DNA and oligosaccharide chains in the entry. The first graphic for a chain summarises the proportions of the various outlier classes displayed in the second graphic. The second graphic shows the sequence view annotated by issues in geometry and electron density. Residues are color-coded according to the number of geometric quality criteria for which they contain at least one outlier: green = 0, yellow = 1, orange = 2 and red = 3 or more. A red dot above a residue indicates a poor fit to the electron density ($RSRZ > 2$). Stretches of 2 or more consecutive residues without any outlier are shown as a green connector. Residues present in the sample, but not in the model, are shown in grey.

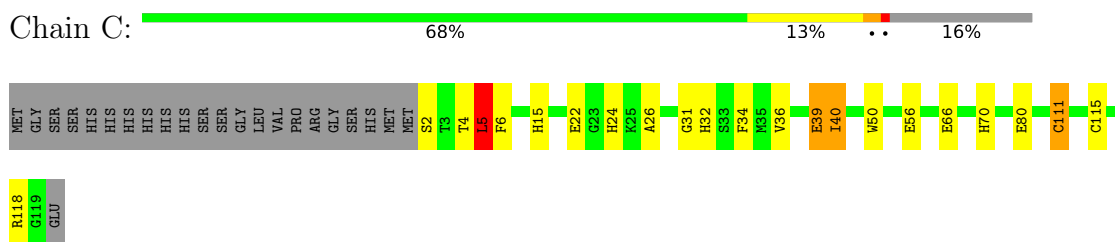
- Molecule 1: 6-carboxy-5,6,7,8-tetrahydropterin synthase



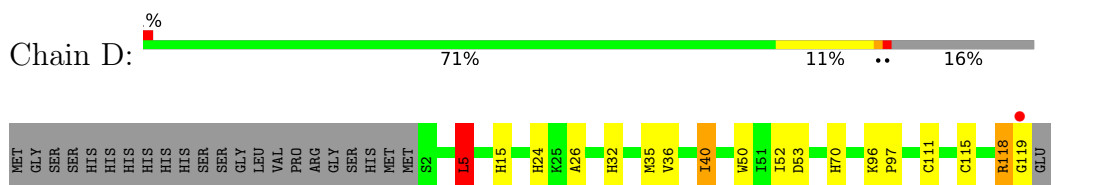
- Molecule 1: 6-carboxy-5,6,7,8-tetrahydropterin synthase



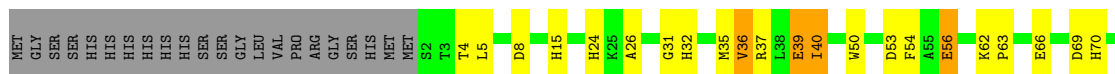
- Molecule 1: 6-carboxy-5,6,7,8-tetrahydropterin synthase



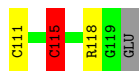
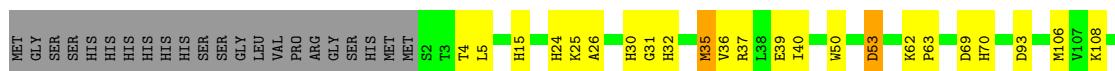
- Molecule 1: 6-carboxy-5,6,7,8-tetrahydropterin synthase



- Molecule 1: 6-carboxy-5,6,7,8-tetrahydropterin synthase



- Molecule 1: 6-carboxy-5,6,7,8-tetrahydropterin synthase



4 Data and refinement statistics i

Property	Value	Source
Space group	I 2 2 2	Depositor
Cell constants a, b, c, α , β , γ	112.71Å 115.88Å 155.19Å 90.00° 90.00° 90.00°	Depositor
Resolution (Å)	92.85 – 2.50 48.91 – 2.50	Depositor EDS
% Data completeness (in resolution range)	(Not available) (92.85-2.50) 99.9 (48.91-2.50)	Depositor EDS
R_{merge}	(Not available)	Depositor
R_{sym}	0.07	Depositor
$\langle I/\sigma(I) \rangle$ ¹	9.59 (at 2.51Å)	Xtriage
Refinement program	REFMAC 5.5.0102	Depositor
R, R_{free}	0.182 , 0.230 0.179 , 0.221	Depositor DCC
R_{free} test set	1780 reflections (5.00%)	wwPDB-VP
Wilson B-factor (Å ²)	30.3	Xtriage
Anisotropy	0.029	Xtriage
Bulk solvent k_{sol} (e/Å ³), B_{sol} (Å ²)	0.35 , 26.0	EDS
L-test for twinning ²	$\langle L \rangle = 0.49$, $\langle L^2 \rangle = 0.32$	Xtriage
Estimated twinning fraction	0.014 for -k,-h,-l 0.031 for -1/2*h+1/2*k-1/2*1,1/2*h-1/2*k- 1/2*1,-h-k 0.010 for -1/2*h+1/2*k+1/2*1,1/2*h-1/2*k +1/2*1,h+k 0.032 for -1/2*h-1/2*k-1/2*1,-1/2*h-1/2*k+ 1/2*1,-h+k 0.019 for -1/2*h-1/2*k+1/2*1,-1/2*h-1/2*k- 1/2*1,h-k	Xtriage
F_o, F_c correlation	0.94	EDS
Total number of atoms	5841	wwPDB-VP
Average B, all atoms (Å ²)	25.0	wwPDB-VP

Xtriage's analysis on translational NCS is as follows: *The largest off-origin peak in the Patterson function is 6.28% of the height of the origin peak. No significant pseudotranslation is detected.*

¹Intensities estimated from amplitudes.

²Theoretical values of $\langle |L| \rangle$, $\langle L^2 \rangle$ for acentric reflections are 0.5, 0.333 respectively for untwinned datasets, and 0.375, 0.2 for perfectly twinned datasets.

5 Model quality [i](#)

5.1 Standard geometry [i](#)

Bond lengths and bond angles in the following residue types are not validated in this section: ZN, BIO

The Z score for a bond length (or angle) is the number of standard deviations the observed value is removed from the expected value. A bond length (or angle) with $|Z| > 5$ is considered an outlier worth inspection. RMSZ is the root-mean-square of all Z scores of the bond lengths (or angles).

Mol	Chain	Bond lengths		Bond angles	
		RMSZ	# $ Z > 5$	RMSZ	# $ Z > 5$
1	A	1.10	5/973 (0.5%)	0.91	2/1325 (0.2%)
1	B	1.10	2/973 (0.2%)	0.93	1/1325 (0.1%)
1	C	1.13	4/973 (0.4%)	0.93	1/1325 (0.1%)
1	D	1.03	1/973 (0.1%)	0.94	1/1325 (0.1%)
1	E	1.06	4/973 (0.4%)	0.89	0/1325
1	F	1.12	3/973 (0.3%)	0.94	3/1325 (0.2%)
All	All	1.09	19/5838 (0.3%)	0.92	8/7950 (0.1%)

The worst 5 of 19 bond length outliers are listed below:

Mol	Chain	Res	Type	Atoms	Z	Observed(Å)	Ideal(Å)
1	F	39	GLU	CD-OE2	8.96	1.35	1.25
1	B	115	CYS	CB-SG	-8.22	1.68	1.82
1	A	43	GLU	CG-CD	7.82	1.63	1.51
1	A	111	CYS	CB-SG	7.00	1.94	1.82
1	F	39	GLU	CG-CD	6.66	1.61	1.51

The worst 5 of 8 bond angle outliers are listed below:

Mol	Chain	Res	Type	Atoms	Z	Observed($^{\circ}$)	Ideal($^{\circ}$)
1	C	5	LEU	CA-CB-CG	6.51	130.26	115.30
1	F	53	ASP	CB-CG-OD1	6.05	123.75	118.30
1	A	5	LEU	CB-CA-C	-5.65	99.47	110.20
1	F	93	ASP	CB-CG-OD1	5.41	123.17	118.30
1	B	53	ASP	CB-CG-OD1	5.41	123.17	118.30

There are no chirality outliers.

There are no planarity outliers.

5.2 Too-close contacts [i](#)

In the following table, the Non-H and H(model) columns list the number of non-hydrogen atoms and hydrogen atoms in the chain respectively. The H(added) column lists the number of hydrogen atoms added and optimized by MolProbity. The Clashes column lists the number of clashes within the asymmetric unit, whereas Symm-Clashes lists symmetry-related clashes.

Mol	Chain	Non-H	H(model)	H(added)	Clashes	Symm-Clashes
1	A	943	0	924	17	0
1	B	943	0	924	20	0
1	C	943	0	924	21	0
1	D	943	0	924	17	0
1	E	943	0	924	29	0
1	F	943	0	924	23	0
2	A	17	0	9	10	0
2	B	17	0	10	6	0
2	C	17	0	10	7	0
2	D	17	0	10	4	0
2	E	17	0	10	8	0
2	F	17	0	10	5	0
3	A	1	0	0	0	0
3	B	1	0	0	0	0
3	C	1	0	0	0	0
3	D	1	0	0	0	0
3	E	1	0	0	0	0
3	F	1	0	0	0	0
4	A	12	0	0	1	0
4	B	20	0	0	1	0
4	C	13	0	0	1	0
4	D	11	0	0	0	0
4	E	7	0	0	0	0
4	F	12	0	0	1	0
All	All	5841	0	5603	120	0

The all-atom clashscore is defined as the number of clashes found per 1000 atoms (including hydrogen atoms). The all-atom clashscore for this structure is 11.

The worst 5 of 120 close contacts within the same asymmetric unit are listed below, sorted by their clash magnitude.

Atom-1	Atom-2	Interatomic distance (Å)	Clash overlap (Å)
2:A:121:BIO:C11	1:D:70:HIS:HE1	1.43	1.29
1:C:70:HIS:HE1	2:E:121:BIO:C11	1.62	1.13
2:A:121:BIO:C11	1:D:70:HIS:CE1	2.36	1.09

Continued on next page...

Continued from previous page...

Atom-1	Atom-2	Interatomic distance (Å)	Clash overlap (Å)
2:A:121:BIO:H111	1:D:70:HIS:CE1	1.92	1.05
2:A:121:BIO:H111	1:D:70:HIS:HE1	1.12	1.05

There are no symmetry-related clashes.

5.3 Torsion angles [i](#)

5.3.1 Protein backbone [i](#)

In the following table, the Percentiles column shows the percent Ramachandran outliers of the chain as a percentile score with respect to all X-ray entries followed by that with respect to entries of similar resolution.

The Analysed column shows the number of residues for which the backbone conformation was analysed, and the total number of residues.

Mol	Chain	Analysed	Favoured	Allowed	Outliers	Percentiles	
1	A	116/141 (82%)	112 (97%)	4 (3%)	0	100	100
1	B	116/141 (82%)	112 (97%)	3 (3%)	1 (1%)	17	31
1	C	116/141 (82%)	111 (96%)	4 (3%)	1 (1%)	17	31
1	D	116/141 (82%)	113 (97%)	3 (3%)	0	100	100
1	E	116/141 (82%)	114 (98%)	2 (2%)	0	100	100
1	F	116/141 (82%)	114 (98%)	2 (2%)	0	100	100
All	All	696/846 (82%)	676 (97%)	18 (3%)	2 (0%)	41	61

All (2) Ramachandran outliers are listed below:

Mol	Chain	Res	Type
1	C	22	GLU
1	B	22	GLU

5.3.2 Protein sidechains [i](#)

In the following table, the Percentiles column shows the percent sidechain outliers of the chain as a percentile score with respect to all X-ray entries followed by that with respect to entries of similar resolution.

The Analysed column shows the number of residues for which the sidechain conformation was analysed, and the total number of residues.

Mol	Chain	Analysed	Rotameric	Outliers	Percentiles	
1	A	101/121 (84%)	96 (95%)	5 (5%)	24	46
1	B	101/121 (84%)	90 (89%)	11 (11%)	6	12
1	C	101/121 (84%)	93 (92%)	8 (8%)	12	24
1	D	101/121 (84%)	92 (91%)	9 (9%)	9	19
1	E	101/121 (84%)	93 (92%)	8 (8%)	12	24
1	F	101/121 (84%)	95 (94%)	6 (6%)	19	37
All	All	606/726 (84%)	559 (92%)	47 (8%)	12	24

5 of 47 residues with a non-rotameric sidechain are listed below:

Mol	Chain	Res	Type
1	D	40	ILE
1	E	40	ILE
1	D	50	TRP
1	D	118	ARG
1	E	56	GLU

Sometimes sidechains can be flipped to improve hydrogen bonding and reduce clashes. 5 of 11 such sidechains are listed below:

Mol	Chain	Res	Type
1	E	70	HIS
1	F	24	HIS
1	F	71	HIS
1	F	70	HIS
1	D	24	HIS

5.3.3 RNA [i](#)

There are no RNA molecules in this entry.

5.4 Non-standard residues in protein, DNA, RNA chains [i](#)

There are no non-standard protein/DNA/RNA residues in this entry.

5.5 Carbohydrates [i](#)

There are no monosaccharides in this entry.

5.6 Ligand geometry [i](#)

Of 12 ligands modelled in this entry, 6 are monoatomic - leaving 6 for Mogul analysis.

In the following table, the Counts columns list the number of bonds (or angles) for which Mogul statistics could be retrieved, the number of bonds (or angles) that are observed in the model and the number of bonds (or angles) that are defined in the Chemical Component Dictionary. The Link column lists molecule types, if any, to which the group is linked. The Z score for a bond length (or angle) is the number of standard deviations the observed value is removed from the expected value. A bond length (or angle) with $|Z| > 2$ is considered an outlier worth inspection. RMSZ is the root-mean-square of all Z scores of the bond lengths (or angles).

Mol	Type	Chain	Res	Link	Bond lengths			Bond angles		
					Counts	RMSZ	# Z > 2	Counts	RMSZ	# Z > 2
2	BIO	D	121	3	17,18,18	1.36	2 (11%)	17,26,26	3.05	9 (52%)
2	BIO	C	121	3	17,18,18	1.34	2 (11%)	17,26,26	2.61	7 (41%)
2	BIO	A	121	3	17,18,18	1.89	3 (17%)	17,26,26	2.07	7 (41%)
2	BIO	E	121	3	17,18,18	1.61	4 (23%)	17,26,26	2.41	6 (35%)
2	BIO	B	121	3	17,18,18	1.82	3 (17%)	17,26,26	2.49	7 (41%)
2	BIO	F	121	3	17,18,18	1.72	3 (17%)	17,26,26	2.63	6 (35%)

In the following table, the Chirals column lists the number of chiral outliers, the number of chiral centers analysed, the number of these observed in the model and the number defined in the Chemical Component Dictionary. Similar counts are reported in the Torsion and Rings columns. '-' means no outliers of that kind were identified.

Mol	Type	Chain	Res	Link	Chirals	Torsions	Rings
2	BIO	D	121	3	-	3/8/8/8	0/2/2/2
2	BIO	C	121	3	-	6/8/8/8	0/2/2/2
2	BIO	A	121	3	-	2/8/8/8	0/2/2/2
2	BIO	E	121	3	-	4/8/8/8	0/2/2/2
2	BIO	B	121	3	-	7/8/8/8	0/2/2/2
2	BIO	F	121	3	-	4/8/8/8	0/2/2/2

The worst 5 of 17 bond length outliers are listed below:

Mol	Chain	Res	Type	Atoms	Z	Observed(Å)	Ideal(Å)
2	A	121	BIO	C10-C9	-5.18	1.46	1.53
2	F	121	BIO	C6-N5	5.02	1.36	1.32
2	B	121	BIO	C6-N5	4.71	1.36	1.32
2	A	121	BIO	C6-N5	4.27	1.36	1.32
2	D	121	BIO	C6-N5	3.95	1.35	1.32

The worst 5 of 42 bond angle outliers are listed below:

Mol	Chain	Res	Type	Atoms	Z	Observed(°)	Ideal(°)
2	D	121	BIO	N8-C8A-N1	6.92	123.72	115.82
2	B	121	BIO	N8-C8A-N1	5.42	122.01	115.82
2	E	121	BIO	N8-C8A-N1	5.40	121.98	115.82
2	D	121	BIO	C2-N1-C8A	5.32	121.44	115.36
2	C	121	BIO	N1-C2-N3	-4.97	120.60	127.22

There are no chirality outliers.

5 of 26 torsion outliers are listed below:

Mol	Chain	Res	Type	Atoms
2	A	121	BIO	C7-C6-C9-O9
2	A	121	BIO	N5-C6-C9-O9
2	B	121	BIO	C7-C6-C9-O9
2	B	121	BIO	N5-C6-C9-O9
2	B	121	BIO	O10-C10-C9-C6

There are no ring outliers.

6 monomers are involved in 40 short contacts:

Mol	Chain	Res	Type	Clashes	Symm-Clashes
2	D	121	BIO	4	0
2	C	121	BIO	7	0
2	A	121	BIO	10	0
2	E	121	BIO	8	0
2	B	121	BIO	6	0
2	F	121	BIO	5	0

5.7 Other polymers [i](#)

There are no such residues in this entry.

5.8 Polymer linkage issues [i](#)

There are no chain breaks in this entry.

6 Fit of model and data [i](#)

6.1 Protein, DNA and RNA chains [i](#)

In the following table, the column labelled '#RSRZ > 2' contains the number (and percentage) of RSRZ outliers, followed by percent RSRZ outliers for the chain as percentile scores relative to all X-ray entries and entries of similar resolution. The OWAB column contains the minimum, median, 95th percentile and maximum values of the occupancy-weighted average B-factor per residue. The column labelled 'Q < 0.9' lists the number of (and percentage) of residues with an average occupancy less than 0.9.

Mol	Chain	Analysed	<RSRZ>	#RSRZ>2	OWAB(Å ²)	Q<0.9
1	A	118/141 (83%)	-0.33	1 (0%) 86 87	15, 24, 38, 48	0
1	B	118/141 (83%)	-0.56	1 (0%) 86 87	12, 21, 36, 49	0
1	C	118/141 (83%)	-0.56	0 100 100	15, 24, 38, 52	0
1	D	118/141 (83%)	-0.49	1 (0%) 86 87	14, 25, 40, 52	0
1	E	118/141 (83%)	-0.51	1 (0%) 86 87	16, 26, 41, 54	0
1	F	118/141 (83%)	-0.58	0 100 100	14, 24, 39, 51	0
All	All	708/846 (83%)	-0.51	4 (0%) 89 90	12, 24, 39, 54	0

All (4) RSRZ outliers are listed below:

Mol	Chain	Res	Type	RSRZ
1	B	22	GLU	3.8
1	A	119	GLY	3.0
1	E	119	GLY	2.9
1	D	119	GLY	2.2

6.2 Non-standard residues in protein, DNA, RNA chains [i](#)

There are no non-standard protein/DNA/RNA residues in this entry.

6.3 Carbohydrates [i](#)

There are no monosaccharides in this entry.

6.4 Ligands [i](#)

In the following table, the Atoms column lists the number of modelled atoms in the group and the number defined in the chemical component dictionary. The B-factors column lists the minimum,

median, 95th percentile and maximum values of B factors of atoms in the group. The column labelled 'Q< 0.9' lists the number of atoms with occupancy less than 0.9.

Mol	Type	Chain	Res	Atoms	RSCC	RSR	B-factors(Å ²)	Q<0.9
2	BIO	A	121	17/17	0.97	0.12	13,19,34,40	0
2	BIO	C	121	17/17	0.97	0.15	25,29,44,46	0
2	BIO	D	121	17/17	0.97	0.14	24,27,38,41	0
2	BIO	E	121	17/17	0.97	0.12	27,30,38,42	0
2	BIO	F	121	17/17	0.97	0.12	25,28,40,44	0
2	BIO	B	121	17/17	0.98	0.14	19,21,37,42	0
3	ZN	A	122	1/1	1.00	0.05	26,26,26,26	0
3	ZN	B	122	1/1	1.00	0.04	29,29,29,29	0
3	ZN	C	122	1/1	1.00	0.05	32,32,32,32	0
3	ZN	D	122	1/1	1.00	0.05	32,32,32,32	0
3	ZN	E	122	1/1	1.00	0.06	30,30,30,30	0
3	ZN	F	122	1/1	1.00	0.07	27,27,27,27	0

6.5 Other polymers [i](#)

There are no such residues in this entry.