



Full wwPDB EM Validation Report ⓘ

Jan 29, 2022 – 06:08 am GMT

PDB ID : 7QJE
EMDB ID : EMD-14019
Title : Structure of recombinant human gamma-Tubulin Ring Complex 4-spoked assembly intermediate (spokes 9-12)
Authors : Tonon, G.; Zupa, E.; Pfeffer, S.
Deposited on : 2021-12-16
Resolution : 7.80 Å (reported)
Based on initial models : 7AS4, 6L81, 6X0U, 6V6S

This is a Full wwPDB EM Validation Report for a publicly released PDB entry.

We welcome your comments at validation@mail.wwpdb.org

A user guide is available at

<https://www.wwpdb.org/validation/2017/EMValidationReportHelp>

with specific help available everywhere you see the ⓘ symbol.

The following versions of software and data (see [references ⓘ](#)) were used in the production of this report:

EMDB validation analysis : 0.0.0.dev97
MolProbity : 4.02b-467
Percentile statistics : 20191225.v01 (using entries in the PDB archive December 25th 2019)
Ideal geometry (proteins) : Engh & Huber (2001)
Ideal geometry (DNA, RNA) : Parkinson et al. (1996)
Validation Pipeline (wwPDB-VP) : 2.26

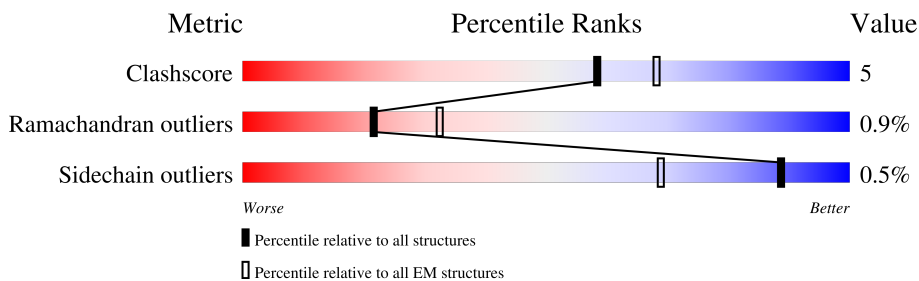
1 Overall quality at a glance i

The following experimental techniques were used to determine the structure:

ELECTRON MICROSCOPY

The reported resolution of this entry is 7.80 Å.

Percentile scores (ranging between 0-100) for global validation metrics of the entry are shown in the following graphic. The table shows the number of entries on which the scores are based.



Metric	Whole archive (#Entries)	EM structures (#Entries)
Clashscore	158937	4297
Ramachandran outliers	154571	4023
Sidechain outliers	154315	3826

The table below summarises the geometric issues observed across the polymeric chains and their fit to the map. The red, orange, yellow and green segments of the bar indicate the fraction of residues that contain outliers for ≥ 3 , 2, 1 and 0 types of geometric quality criteria respectively. A grey segment represents the fraction of residues that are not modelled. The numeric value for each fraction is indicated below the corresponding segment, with a dot representing fractions $\leq 5\%$. The upper red bar (where present) indicates the fraction of residues that have poor fit to the EM map (all-atom inclusion $< 40\%$). The numeric value is given above the bar.

Mol	Chain	Length	Quality of chain
1	I	667	
1	K	667	
2	J	1024	
3	L	1819	
4	W	451	
4	X	451	
4	Y	451	
4	Z	451	

2 Entry composition [i](#)

There are 4 unique types of molecules in this entry. The entry contains 31312 atoms, of which 0 are hydrogens and 0 are deuteriums.

In the tables below, the AltConf column contains the number of residues with at least one atom in alternate conformation and the Trace column contains the number of residues modelled with at most 2 atoms.

- Molecule 1 is a protein called Gamma-tubulin complex component 4.

Mol	Chain	Residues	Atoms					AltConf	Trace
			Total	C	N	O	S		
1	I	521	Total	C	N	O	S	0	0
			4225	2737	720	750	18		
1	K	562	Total	C	N	O	S	0	0
			4579	2964	781	816	18		

- Molecule 2 is a protein called Gamma-tubulin complex component 5.

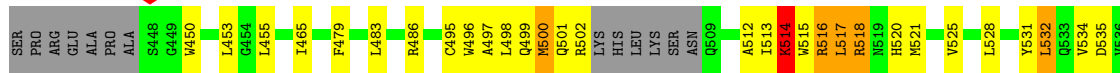
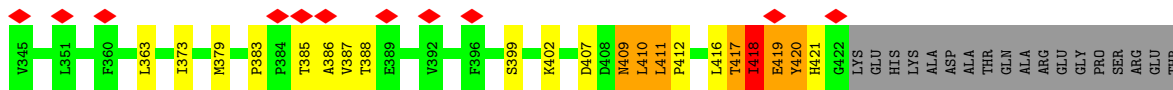
Mol	Chain	Residues	Atoms					AltConf	Trace
			Total	C	N	O	S		
2	J	534	Total	C	N	O	S	0	0
			4429	2893	737	776	23		

- Molecule 3 is a protein called Gamma-tubulin complex component 6.

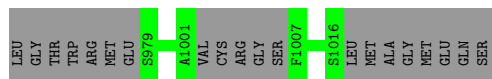
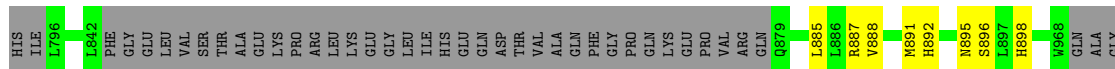
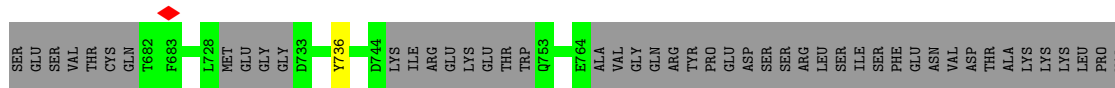
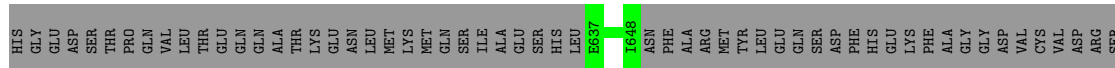
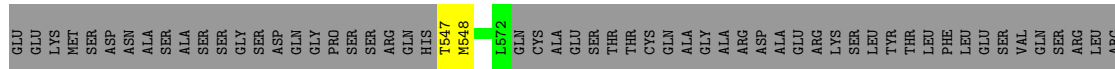
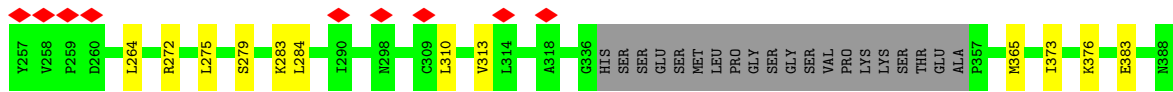
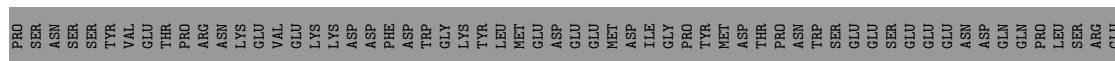
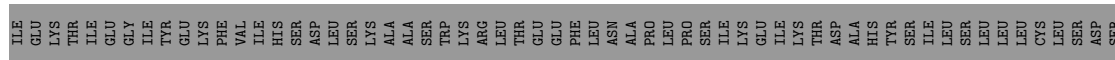
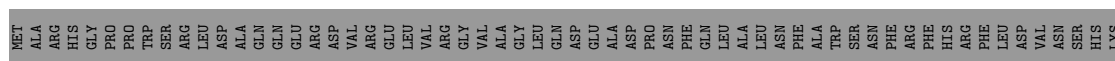
Mol	Chain	Residues	Atoms					AltConf	Trace
			Total	C	N	O	S		
3	L	566	Total	C	N	O	S	0	0
			4587	3000	773	789	25		

- Molecule 4 is a protein called Tubulin gamma-1 chain.

Mol	Chain	Residues	Atoms					AltConf	Trace
			Total	C	N	O	S		
4	W	420	Total	C	N	O	S	0	0
			3373	2134	586	638	15		
4	X	420	Total	C	N	O	S	0	0
			3373	2134	586	638	15		
4	Y	420	Total	C	N	O	S	0	0
			3373	2134	586	638	15		
4	Z	420	Total	C	N	O	S	0	0
			3373	2134	586	638	15		

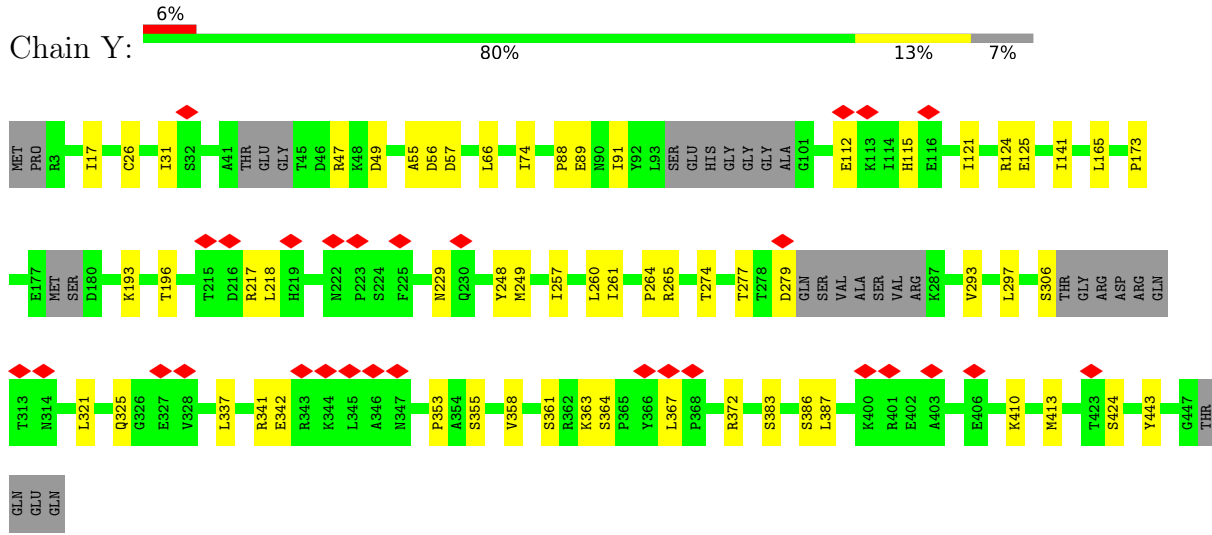


• Molecule 2: Gamma-tubulin complex component 5

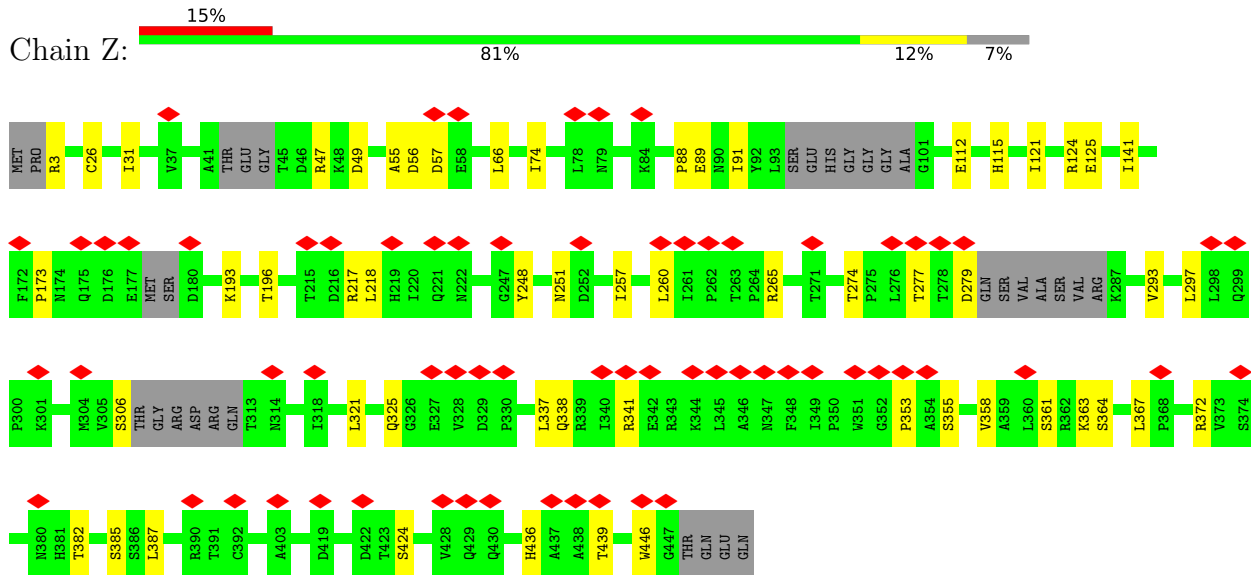


• Molecule 3: Gamma-tubulin complex component 6

• Molecule 4: Tubulin gamma-1 chain



• Molecule 4: Tubulin gamma-1 chain



4 Experimental information

Property	Value	Source
EM reconstruction method	SINGLE PARTICLE	Depositor
Imposed symmetry	POINT, Not provided	
Number of particles used	9192	Depositor
Resolution determination method	FSC 0.143 CUT-OFF	Depositor
CTF correction method	PHASE FLIPPING AND AMPLITUDE CORRECTION	Depositor
Microscope	FEI TITAN KRIOS	Depositor
Voltage (kV)	300	Depositor
Electron dose ($e^-/\text{\AA}^2$)	62.4	Depositor
Minimum defocus (nm)	1000	Depositor
Maximum defocus (nm)	3000	Depositor
Magnification	Not provided	
Image detector	GATAN K3 (6k x 4k)	Depositor
Maximum map value	0.172	Depositor
Minimum map value	-0.070	Depositor
Average map value	0.001	Depositor
Map value standard deviation	0.008	Depositor
Recommended contour level	0.026	Depositor
Map size (Å)	320.9984, 320.9984, 320.9984	wwPDB
Map dimensions	128, 128, 128	wwPDB
Map angles (°)	90.0, 90.0, 90.0	wwPDB
Pixel spacing (Å)	2.5078, 2.5078, 2.5078	Depositor

5 Model quality

5.1 Standard geometry

The Z score for a bond length (or angle) is the number of standard deviations the observed value is removed from the expected value. A bond length (or angle) with $|Z| > 5$ is considered an outlier worth inspection. RMSZ is the root-mean-square of all Z scores of the bond lengths (or angles).

Mol	Chain	Bond lengths		Bond angles	
		RMSZ	# $ Z > 5$	RMSZ	# $ Z > 5$
1	I	0.41	0/4322	0.80	14/5853 (0.2%)
1	K	0.51	4/4683 (0.1%)	0.89	23/6338 (0.4%)
2	J	0.32	0/4525	0.67	6/6119 (0.1%)
3	L	0.33	0/4697	0.68	4/6348 (0.1%)
4	W	0.29	0/3441	0.59	1/4661 (0.0%)
4	X	0.29	0/3441	0.59	1/4661 (0.0%)
4	Y	0.29	0/3441	0.59	1/4661 (0.0%)
4	Z	0.29	0/3441	0.59	1/4661 (0.0%)
All	All	0.36	4/31991 (0.0%)	0.70	51/43302 (0.1%)

Chiral center outliers are detected by calculating the chiral volume of a chiral center and verifying if the center is modelled as a planar moiety or with the opposite hand. A planarity outlier is detected by checking planarity of atoms in a peptide group, atoms in a mainchain group or atoms of a sidechain that are expected to be planar.

Mol	Chain	#Chirality outliers	#Planarity outliers
1	I	0	9
1	K	0	9
2	J	0	1
3	L	0	2
4	W	0	1
4	X	0	1
4	Y	0	1
4	Z	0	1
All	All	0	25

All (4) bond length outliers are listed below:

Mol	Chain	Res	Type	Atoms	Z	Observed(Å)	Ideal(Å)
1	K	286	PHE	CE2-CZ	11.22	1.58	1.37
1	K	286	PHE	CE1-CZ	7.09	1.50	1.37
1	K	654	TYR	CD2-CE2	-5.44	1.31	1.39
1	K	287	GLU	CB-CG	5.31	1.62	1.52

All (51) bond angle outliers are listed below:

Mol	Chain	Res	Type	Atoms	Z	Observed(°)	Ideal(°)
3	L	312	LEU	CA-CB-CG	11.43	141.59	115.30
1	I	517	LEU	CB-CG-CD1	8.86	126.06	111.00
1	K	517	LEU	CB-CG-CD1	8.84	126.02	111.00
1	K	286	PHE	CB-CG-CD2	-8.66	114.74	120.80
1	I	416	LEU	CA-CB-CG	8.44	134.71	115.30
1	K	286	PHE	CB-CG-CD1	-8.19	115.07	120.80
1	K	259	LEU	CB-CG-CD2	7.91	124.45	111.00
1	I	259	LEU	CB-CG-CD2	7.89	124.42	111.00
1	K	654	TYR	CB-CG-CD2	-7.70	116.38	121.00
1	I	630	LEU	CA-CB-CG	6.95	131.28	115.30
1	K	630	LEU	CA-CB-CG	6.93	131.24	115.30
2	J	885	LEU	CA-CB-CG	6.92	131.22	115.30
1	K	286	PHE	CD1-CG-CD2	6.82	127.17	118.30
1	K	642	LEU	CA-CB-CG	6.79	130.91	115.30
1	K	517	LEU	CA-CB-CG	-6.70	99.88	115.30
1	I	517	LEU	CA-CB-CG	-6.68	99.93	115.30
3	L	1804	PHE	CB-CG-CD1	-6.58	116.19	120.80
1	K	647	LEU	CB-CG-CD2	-6.51	99.94	111.00
2	J	365	MET	CB-CG-SD	6.17	130.91	112.40
1	I	300	LEU	CB-CG-CD1	-6.16	100.53	111.00
1	K	300	LEU	CB-CG-CD1	-6.14	100.56	111.00
2	J	402	LEU	CA-CB-CG	6.08	129.28	115.30
3	L	1660	LEU	CA-CB-CG	6.02	129.15	115.30
1	K	419	GLU	N-CA-C	-5.88	95.13	111.00
1	K	648	ARG	CG-CD-NE	5.82	124.02	111.80
2	J	221	VAL	C-N-CA	5.70	135.96	121.70
1	K	277	LEU	CA-CB-CG	5.65	128.29	115.30
1	I	277	LEU	CA-CB-CG	5.63	128.25	115.30
4	X	88	PRO	C-N-CA	5.59	135.69	121.70
4	Z	88	PRO	C-N-CA	5.58	135.65	121.70
4	Y	88	PRO	C-N-CA	5.58	135.64	121.70
4	W	88	PRO	C-N-CA	5.57	135.63	121.70
3	L	1804	PHE	CB-CG-CD2	5.53	124.67	120.80
1	I	532	LEU	CA-CB-CG	-5.48	102.69	115.30
1	K	532	LEU	CA-CB-CG	-5.45	102.77	115.30
1	K	646	LEU	CB-CA-C	5.43	120.52	110.20
1	I	153	ILE	CG1-CB-CG2	-5.43	99.46	111.40
1	K	153	ILE	CG1-CB-CG2	-5.42	99.48	111.40
1	K	535	ASP	CB-CG-OD1	5.25	123.03	118.30
1	I	535	ASP	CB-CG-OD1	5.23	123.01	118.30
1	K	259	LEU	CA-CB-CG	5.18	127.22	115.30
1	I	259	LEU	CA-CB-CG	5.18	127.22	115.30

Continued on next page...

Continued from previous page...

Mol	Chain	Res	Type	Atoms	Z	Observed(°)	Ideal(°)
2	J	284	LEU	CB-CG-CD2	5.17	119.78	111.00
2	J	885	LEU	CB-CG-CD1	-5.14	102.26	111.00
1	K	132	LEU	CA-CB-CG	5.11	127.05	115.30
1	K	255	LYS	N-CA-C	-5.11	97.22	111.00
1	I	500	MET	CA-CB-CG	-5.10	104.63	113.30
1	I	300	LEU	CA-CB-CG	5.09	127.01	115.30
1	I	132	LEU	CA-CB-CG	5.09	127.00	115.30
1	K	500	MET	CA-CB-CG	-5.08	104.67	113.30
1	K	300	LEU	CA-CB-CG	5.07	126.97	115.30

There are no chirality outliers.

All (25) planarity outliers are listed below:

Mol	Chain	Res	Type	Group
1	I	200	HIS	Peptide
1	I	32	PRO	Peptide
1	I	379	MET	Peptide
1	I	386	ALA	Peptide
1	I	501	GLN	Peptide
1	I	514	LYS	Mainchain
1	I	518	ARG	Peptide
1	I	629	ILE	Peptide
1	I	82	HIS	Peptide
2	J	221	VAL	Peptide
1	K	285	MET	Peptide
1	K	286	PHE	Sidechain
1	K	32	PRO	Peptide
1	K	379	MET	Peptide
1	K	386	ALA	Peptide
1	K	501	GLN	Peptide
1	K	514	LYS	Mainchain
1	K	518	ARG	Peptide
1	K	629	ILE	Peptide
3	L	1656	ARG	Sidechain
3	L	345	VAL	Peptide
4	W	55	ALA	Peptide
4	X	55	ALA	Peptide
4	Y	55	ALA	Peptide
4	Z	55	ALA	Peptide

5.2 Too-close contacts [i](#)

In the following table, the Non-H and H(model) columns list the number of non-hydrogen atoms and hydrogen atoms in the chain respectively. The H(added) column lists the number of hydrogen atoms added and optimized by MolProbity. The Clashes column lists the number of clashes within the asymmetric unit, whereas Symm-Clashes lists symmetry-related clashes.

Mol	Chain	Non-H	H(model)	H(added)	Clashes	Symm-Clashes
1	I	4225	0	4259	44	0
1	K	4579	0	4586	109	0
2	J	4429	0	4482	22	0
3	L	4587	0	4636	40	0
4	W	3373	0	3325	29	0
4	X	3373	0	3325	31	0
4	Y	3373	0	3325	40	0
4	Z	3373	0	3325	36	0
All	All	31312	0	31263	308	0

The all-atom clashscore is defined as the number of clashes found per 1000 atoms (including hydrogen atoms). The all-atom clashscore for this structure is 5.

All (308) close contacts within the same asymmetric unit are listed below, sorted by their clash magnitude.

Atom-1	Atom-2	Interatomic distance (Å)	Clash overlap (Å)
1:K:197:LEU:HD22	1:K:201:GLU:H	1.39	0.84
1:K:516:ARG:HH12	4:Y:443:TYR:HB3	1.44	0.82
1:I:176:LEU:HG	1:I:180:HIS:CE1	2.15	0.82
1:K:176:LEU:HG	1:K:180:HIS:CE1	2.15	0.81
1:K:514:LYS:O	1:K:517:LEU:N	2.14	0.80
1:I:514:LYS:O	1:I:517:LEU:N	2.14	0.78
1:K:513:ILE:O	1:K:515:TRP:N	2.17	0.78
1:I:513:ILE:O	1:I:515:TRP:N	2.17	0.77
1:I:626:LEU:O	1:I:630:LEU:HB2	1.87	0.74
1:K:626:LEU:O	1:K:630:LEU:HB2	1.87	0.74
1:K:416:LEU:H	1:K:418:ILE:HG12	1.52	0.73
1:I:516:ARG:HB3	1:I:518:ARG:HG3	1.71	0.73
1:K:646:LEU:O	4:Y:341:ARG:NH1	2.19	0.72
1:K:516:ARG:HB3	1:K:518:ARG:HG3	1.71	0.71
1:K:517:LEU:HB3	1:K:520:HIS:HD2	1.57	0.68
1:K:254:LEU:C	1:K:256:GLN:H	1.95	0.68
1:I:517:LEU:HB3	1:I:520:HIS:HD2	1.57	0.67
3:L:1656:ARG:HH12	4:Z:446:TRP:H	1.43	0.67
1:I:176:LEU:HG	1:I:180:HIS:HE1	1.59	0.66

Continued on next page...

Continued from previous page...

Atom-1	Atom-2	Interatomic distance (Å)	Clash overlap (Å)
2:J:895:ASN:OD1	4:X:357:GLN:NE2	2.28	0.66
3:L:294:ARG:NH1	3:L:296:CYS:SG	2.69	0.66
1:K:176:LEU:HG	1:K:180:HIS:HE1	1.59	0.65
1:K:517:LEU:O	1:K:520:HIS:N	2.22	0.64
1:I:517:LEU:O	1:I:520:HIS:N	2.22	0.64
1:K:626:LEU:HD23	1:K:648:ARG:CZ	2.29	0.63
1:K:416:LEU:H	1:K:418:ILE:CG1	2.12	0.62
2:J:223:GLN:HG3	2:J:230:SER:HA	1.81	0.62
1:K:647:LEU:HD21	4:Y:337:LEU:HD11	1.81	0.62
1:I:515:TRP:O	1:I:518:ARG:N	2.24	0.62
4:X:196:THR:O	4:X:265:ARG:NH2	2.34	0.61
1:K:206:LYS:HD3	1:K:260:ARG:HH22	1.64	0.61
3:L:1800:LEU:O	4:Z:341:ARG:NH1	2.31	0.61
1:K:534:VAL:HG13	4:Y:248:TYR:HE2	1.65	0.61
4:W:196:THR:O	4:W:265:ARG:NH2	2.34	0.60
4:W:56:ASP:HB2	4:X:296:ARG:HD3	1.83	0.60
4:Y:196:THR:O	4:Y:265:ARG:NH2	2.34	0.60
1:K:630:LEU:HD21	1:K:648:ARG:H	1.67	0.60
3:L:1550:LEU:HD13	3:L:1574:LEU:HD23	1.84	0.60
4:Z:66:LEU:HD22	4:Z:91:ILE:HG23	1.83	0.60
4:Z:196:THR:O	4:Z:265:ARG:NH2	2.34	0.60
4:Y:66:LEU:HD22	4:Y:91:ILE:HG23	1.83	0.59
4:X:66:LEU:HD22	4:X:91:ILE:HG23	1.83	0.59
1:K:496:TRP:HZ2	4:Y:261:ILE:HD12	1.67	0.59
3:L:1560:CYS:O	4:Z:3:ARG:NH2	2.34	0.58
4:W:66:LEU:HD22	4:W:91:ILE:HG23	1.83	0.58
1:I:165:LEU:HB2	1:I:168:VAL:HG12	1.84	0.58
1:K:165:LEU:HB2	1:K:168:VAL:HG12	1.85	0.58
1:K:204:PHE:HA	1:K:263:ILE:HG23	1.85	0.58
4:W:306:SER:HB2	4:W:387:LEU:HD22	1.86	0.58
4:Z:325:GLN:HB3	4:Z:361:SER:HB3	1.86	0.58
1:K:644:GLN:O	1:K:647:LEU:N	2.31	0.57
1:K:204:PHE:N	1:K:263:ILE:HG12	2.19	0.57
4:W:325:GLN:HB3	4:W:361:SER:HB3	1.86	0.57
4:X:306:SER:HB2	4:X:387:LEU:HD22	1.86	0.57
4:Y:306:SER:HB2	4:Y:387:LEU:HD22	1.86	0.57
4:Y:325:GLN:HB3	4:Y:361:SER:HB3	1.86	0.57
3:L:1677:ALA:O	3:L:1682:HIS:ND1	2.30	0.57
3:L:332:GLN:NE2	3:L:340:GLN:OE1	2.38	0.56
4:X:325:GLN:HB3	4:X:361:SER:HB3	1.86	0.56
1:K:416:LEU:HA	1:K:453:LEU:HA	1.88	0.55

Continued on next page...

Continued from previous page...

Atom-1	Atom-2	Interatomic distance (Å)	Clash overlap (Å)
4:Z:306:SER:HB2	4:Z:387:LEU:HD22	1.86	0.55
1:K:515:TRP:O	1:K:518:ARG:N	2.24	0.55
1:K:623:SER:HB2	1:K:654:TYR:CG	2.40	0.55
4:Z:363:LYS:HG2	4:Z:372:ARG:HB3	1.89	0.55
1:K:185:LYS:NZ	3:L:513:CYS:O	2.40	0.55
4:W:257:ILE:HD13	4:W:260:LEU:HD12	1.89	0.55
1:I:412:PRO:HB3	1:I:455:LEU:HD11	1.89	0.55
4:Y:363:LYS:HG2	4:Y:372:ARG:HB3	1.89	0.55
1:K:412:PRO:HB3	1:K:455:LEU:HD11	1.89	0.54
1:K:571:GLN:HE21	1:K:638:ILE:HD13	1.71	0.54
4:X:217:ARG:HG3	4:X:218:LEU:HG	1.90	0.54
4:Y:217:ARG:HG3	4:Y:218:LEU:HG	1.90	0.54
4:W:363:LYS:HG2	4:W:372:ARG:HB3	1.89	0.54
4:X:363:LYS:HG2	4:X:372:ARG:HB3	1.89	0.54
1:K:623:SER:HA	1:K:648:ARG:HH22	1.72	0.54
4:X:121:ILE:HG23	4:X:124:ARG:HH21	1.73	0.54
4:Z:217:ARG:HG3	4:Z:218:LEU:HG	1.90	0.54
2:J:275:LEU:O	2:J:279:SER:HB3	2.07	0.54
3:L:1522:GLU:HG3	4:Z:251:ASN:HB2	1.89	0.54
4:X:257:ILE:HD13	4:X:260:LEU:HD12	1.89	0.54
4:Y:257:ILE:HD13	4:Y:260:LEU:HD12	1.89	0.54
4:Z:121:ILE:HG23	4:Z:124:ARG:HH21	1.73	0.54
4:Z:257:ILE:HD13	4:Z:260:LEU:HD12	1.89	0.53
3:L:1615:LYS:HB2	3:L:1709:LEU:HD11	1.90	0.53
4:W:121:ILE:HG23	4:W:124:ARG:HH21	1.73	0.53
4:X:364:SER:HB3	4:X:367:LEU:HG	1.91	0.53
1:K:534:VAL:HG13	4:Y:248:TYR:CE2	2.43	0.53
4:W:217:ARG:HG3	4:W:218:LEU:HG	1.90	0.53
1:K:91:THR:OG1	3:L:515:ASN:OD1	2.25	0.53
1:K:197:LEU:HD22	1:K:201:GLU:N	2.18	0.53
1:I:264:LEU:HD12	1:I:265:PRO:HD2	1.92	0.52
2:J:235:SER:HB3	2:J:240:SER:HB3	1.90	0.52
1:K:254:LEU:C	1:K:256:GLN:N	2.63	0.52
1:K:531:TYR:HE1	4:Y:249:MET:HB2	1.74	0.52
4:Y:121:ILE:HG23	4:Y:124:ARG:HH21	1.73	0.52
2:J:272:ARG:NE	2:J:383:GLU:OE1	2.43	0.52
1:K:637:GLN:HA	1:K:642:LEU:HD21	1.91	0.52
2:J:373:ILE:O	1:K:124:TYR:OH	2.24	0.52
3:L:294:ARG:NH2	3:L:307:ARG:O	2.42	0.52
1:K:387:VAL:HG13	1:K:388:THR:HG23	1.92	0.52
4:Y:364:SER:HB3	4:Y:367:LEU:HG	1.91	0.52

Continued on next page...

Continued from previous page...

Atom-1	Atom-2	Interatomic distance (Å)	Clash overlap (Å)
1:I:201:GLU:HG3	1:I:263:ILE:HD12	1.90	0.52
1:I:202:GLU:HG3	1:I:263:ILE:HG13	1.91	0.51
1:K:264:LEU:HD12	1:K:265:PRO:HD2	1.91	0.51
4:W:364:SER:HB3	4:W:367:LEU:HG	1.91	0.51
4:Y:112:GLU:O	4:Y:115:HIS:ND1	2.43	0.51
3:L:1626:LEU:HD11	3:L:1672:ILE:HG23	1.92	0.51
3:L:332:GLN:NE2	3:L:337:GLY:O	2.43	0.51
4:W:274:THR:HG23	4:W:297:LEU:HD13	1.93	0.51
4:Z:364:SER:HB3	4:Z:367:LEU:HG	1.91	0.51
1:I:176:LEU:CG	1:I:180:HIS:HE1	2.24	0.51
1:K:450:TRP:HE3	1:K:483:LEU:HD21	1.76	0.51
4:X:274:THR:HG23	4:X:297:LEU:HD13	1.93	0.51
4:Y:274:THR:HG23	4:Y:297:LEU:HD13	1.93	0.51
1:I:387:VAL:HG13	1:I:388:THR:HG23	1.92	0.51
1:K:38:GLU:HG3	3:L:313:THR:HG21	1.92	0.50
1:K:528:LEU:HD21	1:K:647:LEU:HD13	1.92	0.50
3:L:1514:HIS:HA	3:L:1519:GLU:HB2	1.93	0.50
1:K:623:SER:HB2	1:K:654:TYR:CD2	2.46	0.50
1:I:450:TRP:HE3	1:I:483:LEU:HD21	1.76	0.50
1:K:385:THR:HA	1:K:420:TYR:CG	2.46	0.50
1:K:176:LEU:CG	1:K:180:HIS:HE1	2.24	0.50
1:K:373:ILE:HD12	1:K:486:ARG:HG2	1.94	0.50
1:I:496:TRP:CE2	4:W:258:ALA:HA	2.46	0.50
1:K:32:PRO:HD2	3:L:323:PHE:CD1	2.47	0.50
4:Z:112:GLU:O	4:Z:115:HIS:ND1	2.43	0.50
1:K:35:HIS:H	3:L:313:THR:HG23	1.77	0.50
4:Z:274:THR:HG23	4:Z:297:LEU:HD13	1.93	0.50
1:K:205:ILE:H	1:K:263:ILE:HD13	1.77	0.49
1:I:35:HIS:HB3	1:I:38:GLU:HG2	1.94	0.49
1:K:35:HIS:HB3	1:K:38:GLU:HG2	1.94	0.49
4:X:274:THR:HG21	4:X:293:VAL:HB	1.95	0.49
4:W:274:THR:HG21	4:W:293:VAL:HB	1.95	0.49
4:X:47:ARG:HE	4:X:49:ASP:HB3	1.78	0.49
1:K:647:LEU:HD11	4:Y:337:LEU:HD21	1.95	0.49
4:W:47:ARG:HE	4:W:49:ASP:HB3	1.78	0.49
1:K:525:VAL:HB	1:K:648:ARG:HH11	1.77	0.48
1:K:619:PHE:O	1:K:623:SER:HB3	2.12	0.48
3:L:321:ASP:N	3:L:321:ASP:OD1	2.46	0.48
4:W:277:THR:HG22	4:W:279:ASP:H	1.78	0.48
4:Z:274:THR:HG21	4:Z:293:VAL:HB	1.95	0.48
4:Y:274:THR:HG21	4:Y:293:VAL:HB	1.95	0.48

Continued on next page...

Continued from previous page...

Atom-1	Atom-2	Interatomic distance (Å)	Clash overlap (Å)
1:I:373:ILE:HD12	1:I:486:ARG:HG2	1.94	0.48
1:I:619:PHE:O	1:I:623:SER:HB3	2.13	0.48
1:K:182:VAL:HG22	3:L:514:SER:HB3	1.96	0.48
4:X:277:THR:HG22	4:X:279:ASP:H	1.78	0.48
4:Z:47:ARG:HE	4:Z:49:ASP:HB3	1.78	0.48
3:L:1667:HIS:CD2	4:Z:353:PRO:HG2	2.48	0.48
1:I:153:ILE:HA	1:I:156:THR:HG22	1.95	0.48
1:K:153:ILE:HA	1:K:156:THR:HG22	1.95	0.48
1:I:517:LEU:HD23	1:I:517:LEU:HA	1.62	0.48
2:J:892:HIS:HB3	4:X:353:PRO:HG2	1.96	0.48
1:K:532:LEU:HD22	1:K:644:GLN:NE2	2.28	0.48
4:X:141:ILE:HB	4:X:173:PRO:HD3	1.96	0.48
4:Y:47:ARG:HE	4:Y:49:ASP:HB3	1.78	0.48
4:Y:141:ILE:HB	4:Y:173:PRO:HD3	1.96	0.47
1:K:84:ILE:HD11	3:L:513:CYS:H	1.79	0.47
1:K:410:LEU:H	1:K:410:LEU:HG	1.36	0.47
4:W:383:SER:O	4:W:386:SER:OG	2.29	0.47
1:I:517:LEU:HB3	1:I:520:HIS:CD2	2.45	0.47
1:K:196:LEU:HB2	1:K:205:ILE:HD13	1.95	0.47
3:L:1519:GLU:HG3	4:Z:248:TYR:CZ	2.49	0.47
1:K:517:LEU:HD23	1:K:517:LEU:HA	1.62	0.47
4:W:124:ARG:NH1	4:W:125:GLU:OE2	2.48	0.47
4:W:341:ARG:NH2	4:W:355:SER:OG	2.48	0.47
4:X:341:ARG:NH2	4:X:355:SER:OG	2.47	0.47
4:Z:141:ILE:HB	4:Z:173:PRO:HD3	1.96	0.47
4:X:124:ARG:NH1	4:X:125:GLU:OE2	2.48	0.47
4:Y:277:THR:HG22	4:Y:279:ASP:H	1.78	0.47
4:Z:277:THR:HG22	4:Z:279:ASP:H	1.78	0.47
2:J:242:LEU:HD22	3:L:299:ARG:HA	1.96	0.47
4:Y:383:SER:O	4:Y:386:SER:OG	2.29	0.47
4:Z:341:ARG:NH2	4:Z:355:SER:OG	2.48	0.47
2:J:736:TYR:HB3	4:X:3:ARG:HH11	1.80	0.47
4:W:26:CYS:HA	4:W:31:ILE:HD11	1.97	0.47
4:Y:26:CYS:HA	4:Y:31:ILE:HD11	1.97	0.47
3:L:323:PHE:CE2	3:L:327:HIS:HB2	2.50	0.47
4:Y:341:ARG:NH2	4:Y:355:SER:OG	2.48	0.46
1:K:151:CYS:SG	1:K:203:PHE:HA	2.56	0.46
4:W:112:GLU:O	4:W:115:HIS:ND1	2.43	0.46
4:X:26:CYS:HA	4:X:31:ILE:HD11	1.97	0.46
1:K:255:LYS:HA	1:K:255:LYS:HD2	1.63	0.46
1:K:517:LEU:HB3	1:K:520:HIS:CD2	2.45	0.46

Continued on next page...

Continued from previous page...

Atom-1	Atom-2	Interatomic distance (Å)	Clash overlap (Å)
4:W:141:ILE:HB	4:W:173:PRO:HD3	1.96	0.46
4:Z:26:CYS:HA	4:Z:31:ILE:HD11	1.97	0.46
1:K:206:LYS:HB3	1:K:257:PHE:HB3	1.98	0.46
1:K:646:LEU:O	4:Y:341:ARG:HD3	2.16	0.46
4:Y:260:LEU:HD21	4:Y:321:LEU:HD22	1.98	0.46
1:I:84:ILE:HA	1:I:87:ARG:HE	1.81	0.46
1:I:272:VAL:HG13	1:I:329:VAL:HG11	1.98	0.46
2:J:888:VAL:HG12	4:X:352:GLY:HA3	1.97	0.46
2:J:892:HIS:O	2:J:896:SER:N	2.43	0.46
1:K:623:SER:HB2	1:K:654:TYR:CD1	2.51	0.46
1:K:654:TYR:CZ	4:Y:353:PRO:HG3	2.50	0.46
4:Y:124:ARG:NH1	4:Y:125:GLU:OE2	2.48	0.46
1:I:416:LEU:HA	1:I:453:LEU:HA	1.96	0.46
4:W:260:LEU:HD21	4:W:321:LEU:HD22	1.98	0.46
1:K:272:VAL:HG13	1:K:329:VAL:HG11	1.98	0.45
1:K:84:ILE:HA	1:K:87:ARG:HE	1.81	0.45
4:X:260:LEU:HD21	4:X:321:LEU:HD22	1.98	0.45
1:K:496:TRP:HZ3	4:Y:165:LEU:HD21	1.80	0.45
1:K:495:CYS:O	1:K:498:LEU:HB2	2.16	0.45
1:I:539:SER:HB3	4:W:330:PRO:HB2	1.99	0.45
2:J:547:THR:OG1	2:J:548:MET:N	2.50	0.45
3:L:1626:LEU:HD21	3:L:1673:GLN:HA	1.99	0.45
4:W:193:LYS:HG3	4:W:424:SER:HA	1.99	0.45
4:Z:260:LEU:HD21	4:Z:321:LEU:HD22	1.98	0.45
2:J:895:ASN:O	2:J:898:HIS:HB3	2.17	0.45
1:I:81:LEU:HB3	1:I:86:LEU:HD13	1.99	0.45
1:K:383:PRO:HB2	1:K:420:TYR:HD1	1.82	0.45
4:Z:124:ARG:NH1	4:Z:125:GLU:OE2	2.48	0.45
4:Z:337:LEU:HD13	4:Z:358:VAL:HG13	1.99	0.45
2:J:310:LEU:HA	2:J:313:VAL:HG22	1.98	0.45
3:L:506:TYR:OH	3:L:1478:ARG:NH2	2.50	0.45
4:W:337:LEU:HD13	4:W:358:VAL:HG13	1.99	0.45
4:Y:337:LEU:HD13	4:Y:358:VAL:HG13	1.99	0.45
1:I:410:LEU:H	1:I:410:LEU:HG	1.35	0.44
1:K:254:LEU:HD11	1:K:465:ILE:HG22	2.00	0.44
1:K:626:LEU:HB3	1:K:648:ARG:NH2	2.32	0.44
1:K:630:LEU:HD23	1:K:645:LEU:HA	2.00	0.44
1:I:409:ASN:C	1:I:411:LEU:H	2.21	0.44
4:Y:193:LYS:HG3	4:Y:424:SER:HA	1.99	0.44
1:I:319:LEU:HD12	1:I:319:LEU:HA	1.81	0.44
4:Y:56:ASP:OD1	4:Y:57:ASP:N	2.51	0.44

Continued on next page...

Continued from previous page...

Atom-1	Atom-2	Interatomic distance (Å)	Clash overlap (Å)
4:W:56:ASP:OD1	4:W:57:ASP:N	2.51	0.44
4:X:337:LEU:HD13	4:X:358:VAL:HG13	1.99	0.44
1:I:274:GLU:HA	1:I:277:LEU:HD12	2.00	0.44
4:Z:193:LYS:HG3	4:Z:424:SER:HA	1.99	0.44
4:X:56:ASP:OD1	4:X:57:ASP:N	2.51	0.44
4:X:112:GLU:O	4:X:115:HIS:ND1	2.43	0.44
1:K:416:LEU:N	1:K:418:ILE:HG12	2.26	0.44
1:K:518:ARG:HG2	1:K:521:MET:HB2	2.00	0.44
1:K:646:LEU:HD13	4:Y:342:GLU:HG2	1.99	0.44
4:X:193:LYS:HG3	4:X:424:SER:HA	1.99	0.44
1:K:274:GLU:HA	1:K:277:LEU:HD12	2.00	0.44
1:I:518:ARG:HG2	1:I:521:MET:HB2	2.00	0.43
1:K:190:TRP:CE2	1:K:280:GLY:HA3	2.53	0.43
1:K:383:PRO:HB2	1:K:420:TYR:CD1	2.53	0.43
3:L:1797:ASP:OD1	4:Z:338:GLN:NE2	2.48	0.43
3:L:328:GLN:O	3:L:332:GLN:HG2	2.18	0.43
3:L:1521:GLY:HA3	4:Z:248:TYR:HA	1.99	0.43
3:L:1783:VAL:HG23	3:L:1799:LEU:HD13	2.00	0.43
4:X:388:PHE:O	4:X:391:THR:OG1	2.30	0.43
3:L:410:LEU:HD13	3:L:436:LEU:HD11	1.99	0.43
1:I:190:TRP:CE2	1:I:280:GLY:HA3	2.53	0.43
1:K:626:LEU:HG	1:K:630:LEU:HD13	2.00	0.43
3:L:1637:CYS:HB2	3:L:1662:LYS:HD3	1.99	0.43
4:Z:56:ASP:OD1	4:Z:57:ASP:N	2.51	0.43
1:I:363:LEU:HD21	1:I:479:PHE:HE1	1.84	0.43
1:K:630:LEU:C	1:K:645:LEU:HB2	2.39	0.43
1:K:82:HIS:HB2	1:K:83:GLY:H	1.65	0.43
1:I:626:LEU:HG	1:I:630:LEU:HD13	2.00	0.43
1:K:495:CYS:C	1:K:497:ALA:N	2.72	0.43
2:J:279:SER:HB2	2:J:376:LYS:HG3	2.01	0.43
2:J:736:TYR:HD2	4:X:3:ARG:HE	1.65	0.43
1:K:497:ALA:C	1:K:499:GLN:N	2.66	0.43
1:I:496:TRP:CD2	4:W:258:ALA:HA	2.54	0.42
1:K:615:LEU:O	1:K:619:PHE:HB2	2.20	0.42
1:K:520:HIS:NE2	4:Y:264:PRO:HB3	2.34	0.42
1:K:363:LEU:HD21	1:K:479:PHE:HE1	1.83	0.42
3:L:509:ALA:HB1	3:L:1475:LEU:HD21	2.01	0.42
4:X:436:HIS:O	4:X:439:THR:OG1	2.36	0.42
4:Z:367:LEU:HD23	4:Z:367:LEU:HA	1.90	0.42
2:J:283:LYS:HB3	2:J:283:LYS:HE3	1.85	0.42
1:K:532:LEU:HD11	1:K:640:SER:O	2.20	0.42

Continued on next page...

Continued from previous page...

Atom-1	Atom-2	Interatomic distance (Å)	Clash overlap (Å)
1:K:498:LEU:HG	1:K:502:ARG:HD2	2.01	0.42
3:L:1526:SER:HB3	4:Z:3:ARG:NH1	2.35	0.42
4:X:66:LEU:HD21	4:X:74:ILE:HD11	2.02	0.42
1:K:627:PHE:HE2	1:K:655:TYR:HB2	1.85	0.42
4:Z:66:LEU:HD21	4:Z:74:ILE:HD11	2.02	0.42
1:I:615:LEU:O	1:I:619:PHE:HB2	2.19	0.42
1:K:187:LEU:HD21	1:K:204:PHE:CZ	2.55	0.42
1:K:279:VAL:HG22	1:K:336:VAL:HG11	2.02	0.42
1:K:409:ASN:C	1:K:411:LEU:H	2.23	0.42
1:K:537:LEU:HD23	1:K:568:LEU:HD22	2.01	0.42
1:K:630:LEU:O	1:K:645:LEU:N	2.52	0.42
4:W:17:ILE:HG22	4:W:229:ASN:HA	2.02	0.42
1:I:537:LEU:HD23	1:I:568:LEU:HD22	2.01	0.41
2:J:475:THR:HG23	2:J:486:TRP:HB3	2.02	0.41
1:K:623:SER:HA	1:K:648:ARG:NH2	2.34	0.41
3:L:1560:CYS:HB3	4:Z:3:ARG:NH2	2.36	0.41
4:W:66:LEU:HD21	4:W:74:ILE:HD11	2.02	0.41
4:Y:66:LEU:HD21	4:Y:74:ILE:HD11	2.02	0.41
2:J:212:ASP:OD1	2:J:213:ARG:N	2.52	0.41
1:K:652:ASN:HB3	1:K:655:TYR:HB3	2.02	0.41
1:I:498:LEU:HD11	1:I:517:LEU:HD22	2.02	0.41
1:K:416:LEU:HB3	1:K:417:THR:H	1.56	0.41
4:Y:17:ILE:HG22	4:Y:229:ASN:HA	2.02	0.41
2:J:239:HIS:ND1	3:L:299:ARG:O	2.54	0.41
1:K:418:ILE:HG22	1:K:420:TYR:CD1	2.55	0.41
1:I:279:VAL:HG22	1:I:336:VAL:HG11	2.02	0.41
4:Z:382:THR:O	4:Z:385:SER:OG	2.24	0.41
1:K:256:GLN:HB2	1:K:284:GLN:HE22	1.84	0.41
1:I:79:GLY:HA2	1:I:82:HIS:CD2	2.55	0.41
1:K:84:ILE:HG21	1:K:186:GLN:HE22	1.86	0.41
1:K:385:THR:OG1	1:K:420:TYR:HB2	2.22	0.41
4:Y:410:LYS:HA	4:Y:413:MET:HG3	2.03	0.41
3:L:1777:HIS:ND1	3:L:1807:TYR:O	2.49	0.40
1:K:399:SER:HA	1:K:402:LYS:HD3	2.03	0.40
4:Z:436:HIS:O	4:Z:439:THR:OG1	2.36	0.40
2:J:887:ARG:O	2:J:891:MET:N	2.42	0.40
3:L:346:LEU:HB3	3:L:347:VAL:HG22	2.02	0.40
3:L:597:VAL:HA	3:L:600:LYS:HE2	2.03	0.40
1:I:84:ILE:HG21	1:I:186:GLN:HE22	1.86	0.40
1:K:500:MET:SD	4:Y:165:LEU:HG	2.62	0.40
2:J:430:VAL:HG21	2:J:493:ILE:HA	2.04	0.40

Continued on next page...

Continued from previous page...

Atom-1	Atom-2	Interatomic distance (Å)	Clash overlap (Å)
1:K:498:LEU:HD11	1:K:517:LEU:HD22	2.02	0.40
1:K:627:PHE:HA	1:K:630:LEU:HD22	2.03	0.40

There are no symmetry-related clashes.

5.3 Torsion angles [i](#)

5.3.1 Protein backbone [i](#)

In the following table, the Percentiles column shows the percent Ramachandran outliers of the chain as a percentile score with respect to all PDB entries followed by that with respect to all EM entries.

The Analysed column shows the number of residues for which the backbone conformation was analysed, and the total number of residues.

Mol	Chain	Analysed	Favoured	Allowed	Outliers	Percentiles	
1	I	511/667 (77%)	475 (93%)	30 (6%)	6 (1%)	13	50
1	K	548/667 (82%)	494 (90%)	42 (8%)	12 (2%)	6	35
2	J	506/1024 (49%)	468 (92%)	31 (6%)	7 (1%)	11	46
3	L	540/1819 (30%)	507 (94%)	30 (6%)	3 (1%)	25	66
4	W	408/451 (90%)	382 (94%)	25 (6%)	1 (0%)	47	81
4	X	408/451 (90%)	382 (94%)	25 (6%)	1 (0%)	47	81
4	Y	408/451 (90%)	382 (94%)	25 (6%)	1 (0%)	47	81
4	Z	408/451 (90%)	382 (94%)	25 (6%)	1 (0%)	47	81
All	All	3737/5981 (62%)	3472 (93%)	233 (6%)	32 (1%)	21	57

All (32) Ramachandran outliers are listed below:

Mol	Chain	Res	Type
2	J	240	SER
1	K	204	PHE
3	L	568	TYR
4	W	89	GLU
4	X	89	GLU
4	Y	89	GLU
4	Z	89	GLU
2	J	221	VAL

Continued on next page...

Continued from previous page...

Mol	Chain	Res	Type
1	I	409	ASN
2	J	222	HIS
2	J	256	LEU
1	K	65	HIS
1	K	254	LEU
1	I	508	ASN
1	I	516	ARG
2	J	254	ASP
2	J	264	LEU
1	K	201	GLU
1	K	409	ASN
1	K	420	TYR
1	K	516	ARG
1	I	512	ALA
1	I	514	LYS
1	K	421	HIS
1	K	512	ALA
1	K	514	LYS
3	L	340	GLN
3	L	451	PRO
1	I	411	LEU
2	J	211	ASP
1	K	411	LEU
1	K	418	ILE

5.3.2 Protein sidechains [i](#)

In the following table, the Percentiles column shows the percent sidechain outliers of the chain as a percentile score with respect to all PDB entries followed by that with respect to all EM entries.

The Analysed column shows the number of residues for which the sidechain conformation was analysed, and the total number of residues.

Mol	Chain	Analysed	Rotameric	Outliers	Percentiles	
1	I	472/594 (80%)	467 (99%)	5 (1%)	73	84
1	K	509/594 (86%)	497 (98%)	12 (2%)	49	69
2	J	498/933 (53%)	497 (100%)	1 (0%)	93	96
3	L	501/1546 (32%)	501 (100%)	0	100	100
4	W	376/400 (94%)	376 (100%)	0	100	100

Continued on next page...

Continued from previous page...

Mol	Chain	Analysed	Rotameric	Outliers	Percentiles	
4	X	376/400 (94%)	376 (100%)	0	100	100
4	Y	376/400 (94%)	376 (100%)	0	100	100
4	Z	376/400 (94%)	376 (100%)	0	100	100
All	All	3484/5267 (66%)	3466 (100%)	18 (0%)	89	93

All (18) residues with a non-rotameric sidechain are listed below:

Mol	Chain	Res	Type
1	I	63	THR
1	I	407	ASP
1	I	410	LEU
1	I	417	THR
1	I	499	GLN
2	J	256	LEU
1	K	63	THR
1	K	66	VAL
1	K	78	GLN
1	K	82	HIS
1	K	201	GLU
1	K	202	GLU
1	K	255	LYS
1	K	407	ASP
1	K	410	LEU
1	K	417	THR
1	K	418	ILE
1	K	419	GLU

Sometimes sidechains can be flipped to improve hydrogen bonding and reduce clashes. All (5) such sidechains are listed below:

Mol	Chain	Res	Type
1	I	520	HIS
2	J	895	ASN
1	K	69	GLN
1	K	78	GLN
4	X	357	GLN

5.3.3 RNA

There are no RNA molecules in this entry.

5.4 Non-standard residues in protein, DNA, RNA chains [i](#)

There are no non-standard protein/DNA/RNA residues in this entry.

5.5 Carbohydrates [i](#)

There are no monosaccharides in this entry.

5.6 Ligand geometry [i](#)

There are no ligands in this entry.

5.7 Other polymers [i](#)

There are no such residues in this entry.

5.8 Polymer linkage issues [i](#)

There are no chain breaks in this entry.

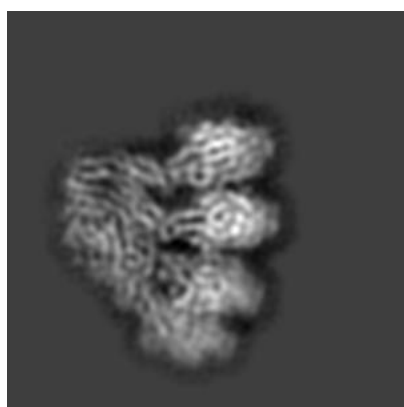
6 Map visualisation [i](#)

This section contains visualisations of the EMDB entry EMD-14019. These allow visual inspection of the internal detail of the map and identification of artifacts.

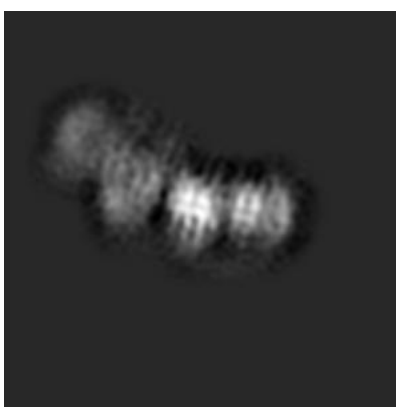
No raw map or half-maps were deposited for this entry and therefore no images, graphs, etc. pertaining to the raw map can be shown.

6.1 Orthogonal projections [i](#)

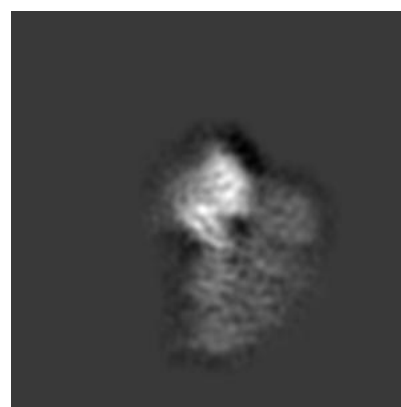
6.1.1 Primary map



X



Y

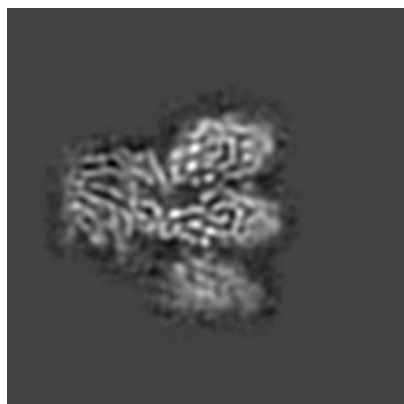


Z

The images above show the map projected in three orthogonal directions.

6.2 Central slices [i](#)

6.2.1 Primary map



X Index: 64



Y Index: 64



Z Index: 64

The images above show central slices of the map in three orthogonal directions.

6.3 Largest variance slices [i](#)

6.3.1 Primary map



X Index: 66



Y Index: 64

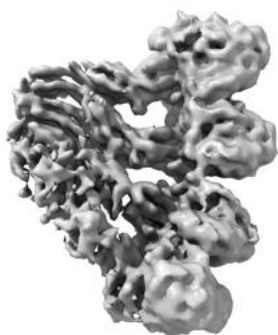


Z Index: 62

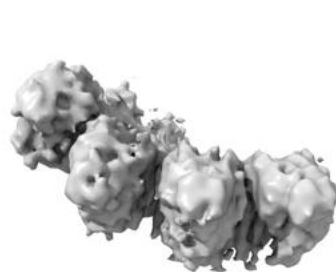
The images above show the largest variance slices of the map in three orthogonal directions.

6.4 Orthogonal surface views [i](#)

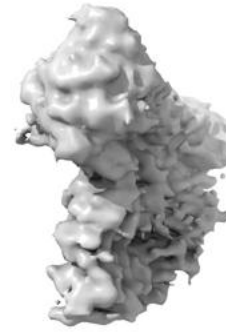
6.4.1 Primary map



X



Y



Z

The images above show the 3D surface view of the map at the recommended contour level 0.026. These images, in conjunction with the slice images, may facilitate assessment of whether an appropriate contour level has been provided.

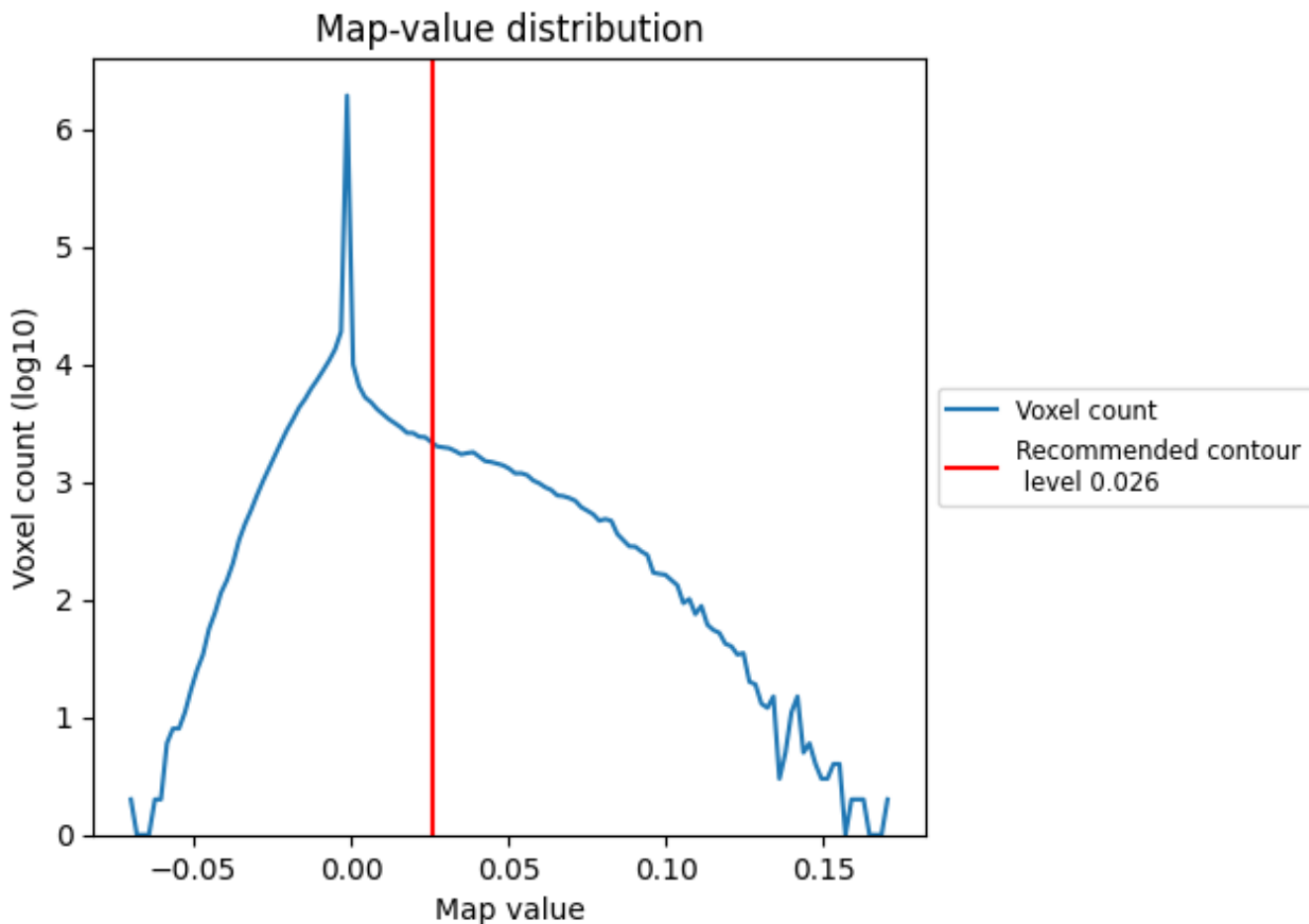
6.5 Mask visualisation

This section was not generated. No masks/segmentation were deposited.

7 Map analysis [i](#)

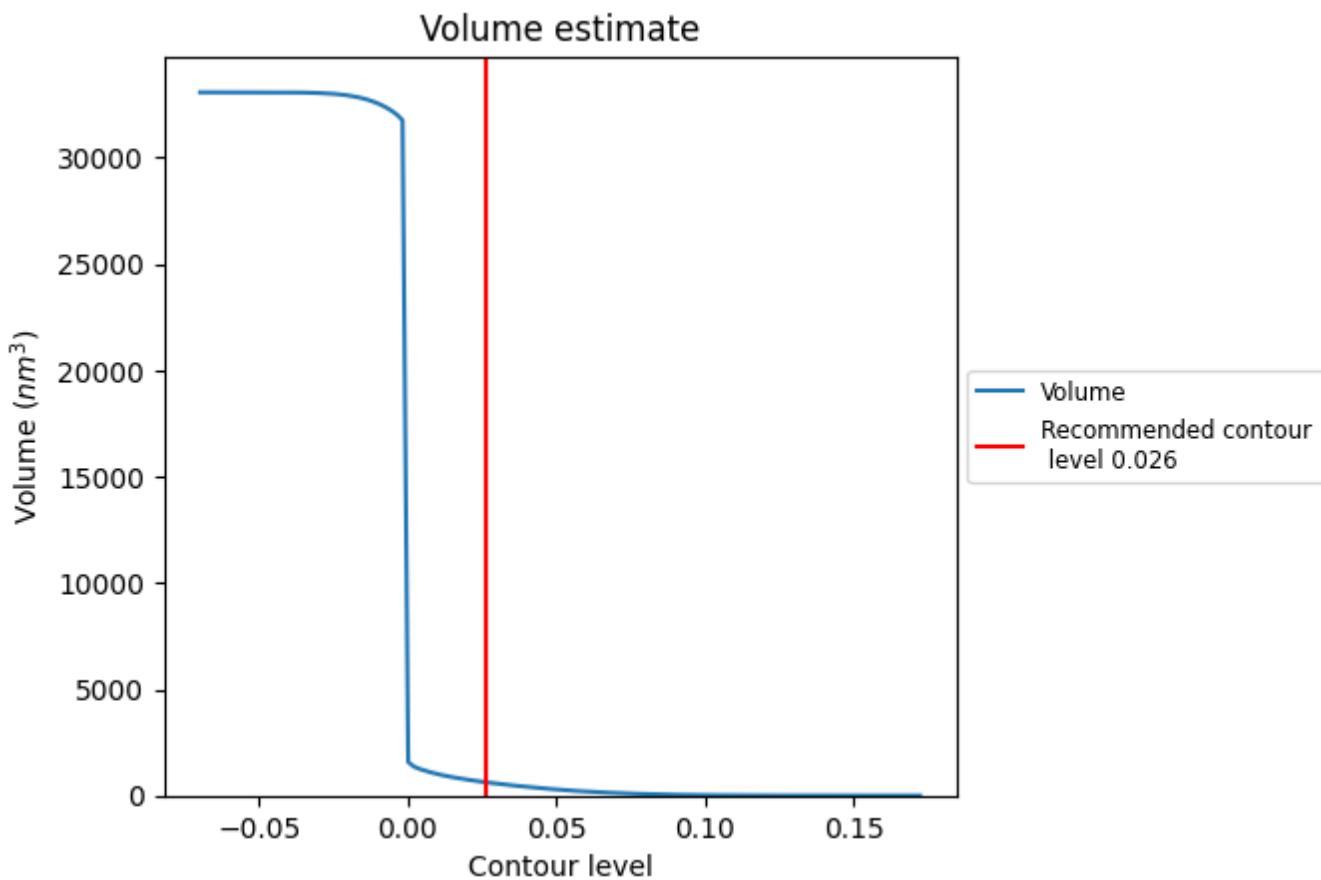
This section contains the results of statistical analysis of the map.

7.1 Map-value distribution [i](#)



The map-value distribution is plotted in 128 intervals along the x-axis. The y-axis is logarithmic. A spike in this graph at zero usually indicates that the volume has been masked.

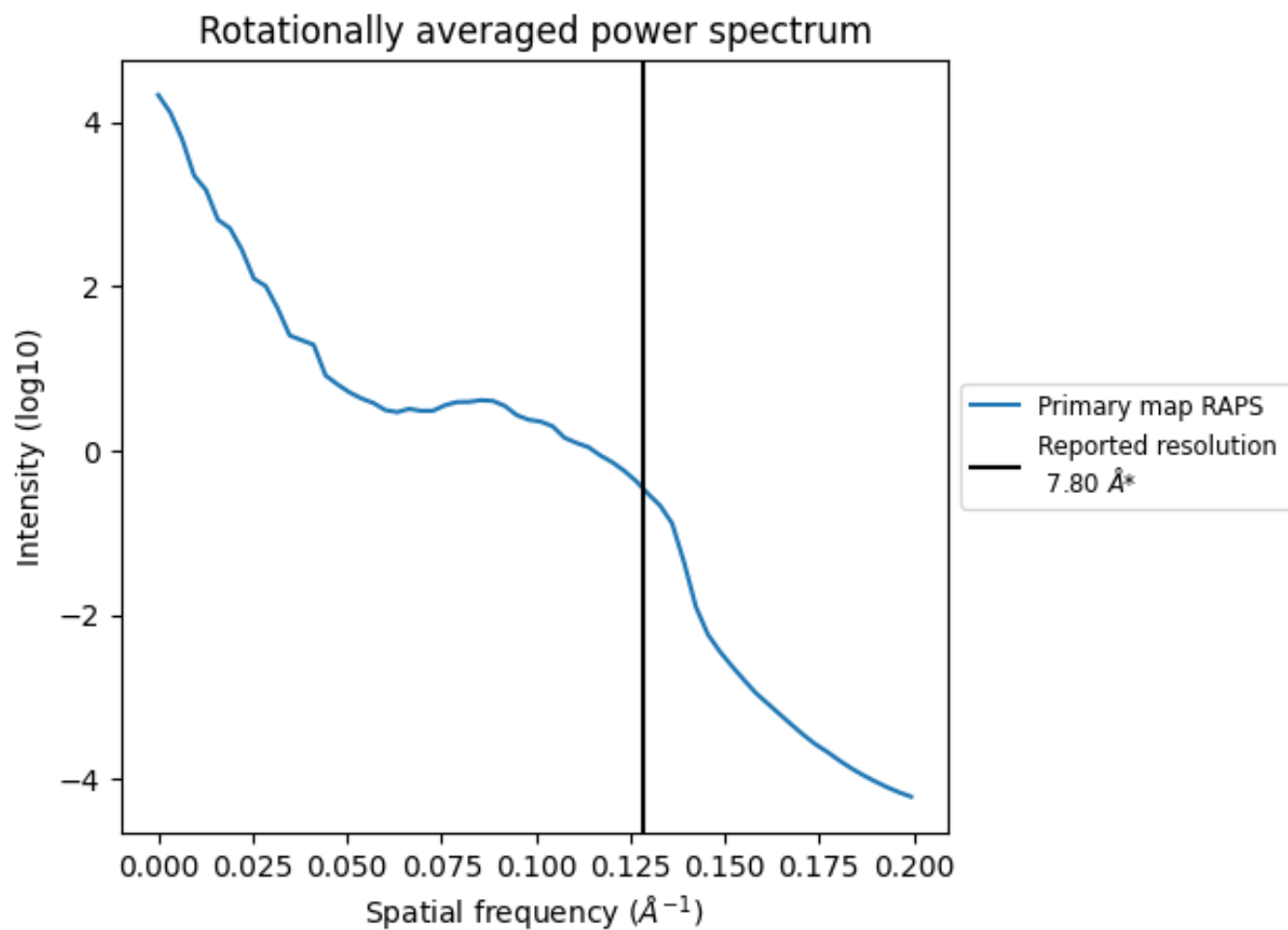
7.2 Volume estimate [\(i\)](#)



The volume at the recommended contour level is 629 nm³; this corresponds to an approximate mass of 569 kDa.

The volume estimate graph shows how the enclosed volume varies with the contour level. The recommended contour level is shown as a vertical line and the intersection between the line and the curve gives the volume of the enclosed surface at the given level.

7.3 Rotationally averaged power spectrum [i](#)



*Reported resolution corresponds to spatial frequency of 0.128\AA^{-1}

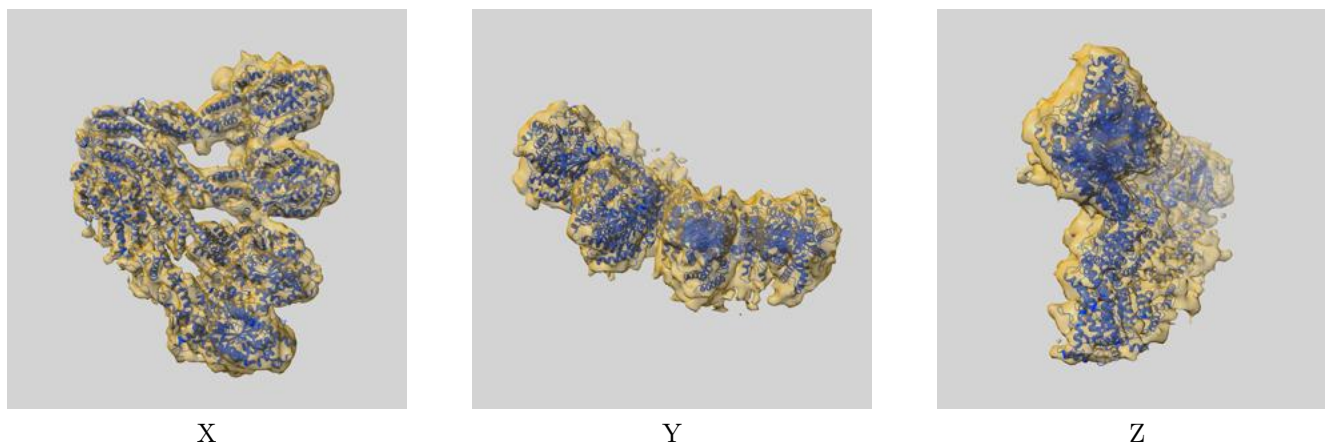
8 Fourier-Shell correlation

This section was not generated. No FSC curve or half-maps provided.

9 Map-model fit [i](#)

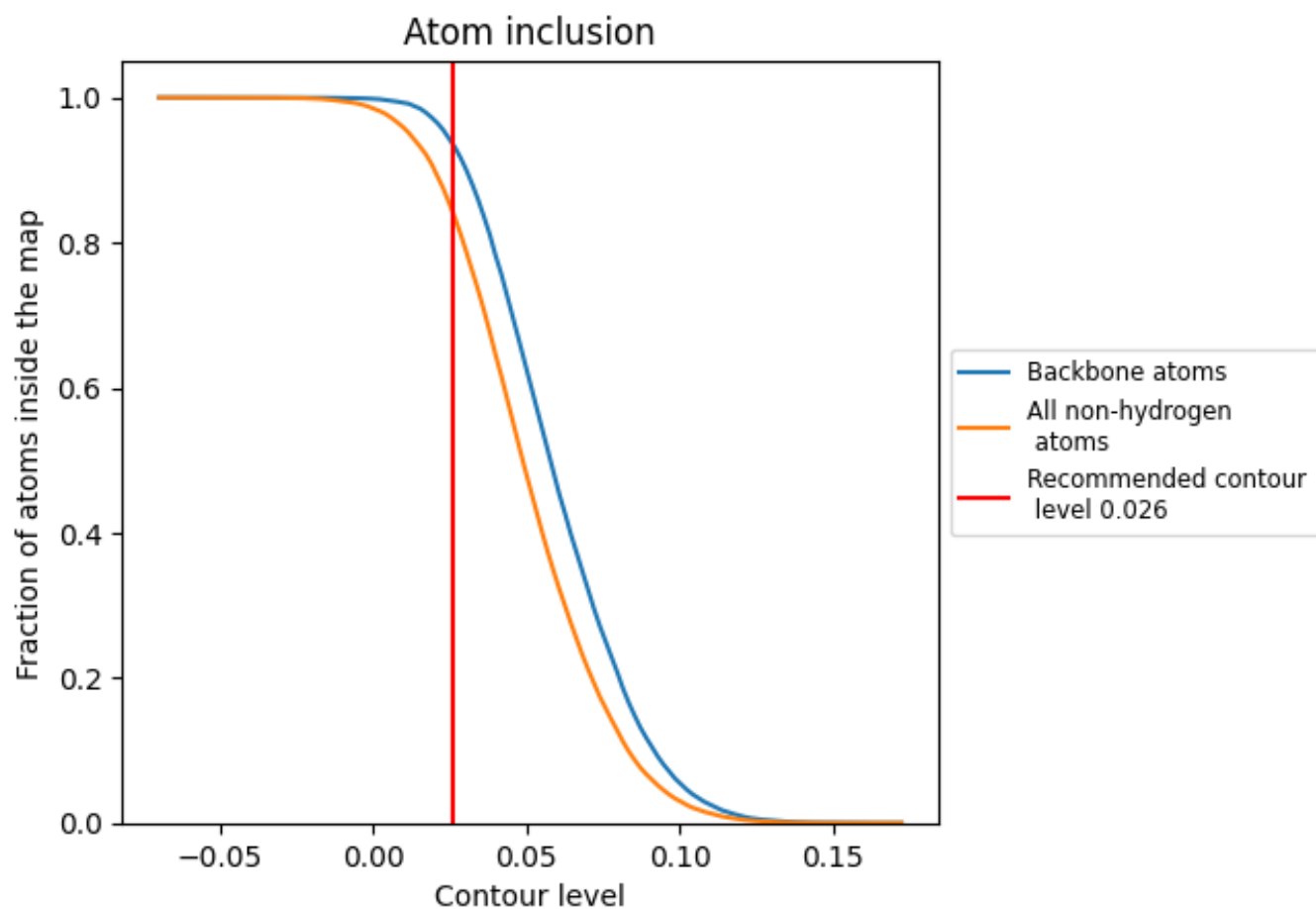
This section contains information regarding the fit between EMDB map EMD-14019 and PDB model 7QJE. Per-residue inclusion information can be found in section 3 on page 4.

9.1 Map-model overlay [i](#)



The images above show the 3D surface view of the map at the recommended contour level 0.026 at 50% transparency in yellow overlaid with a ribbon representation of the model coloured in blue. These images allow for the visual assessment of the quality of fit between the atomic model and the map.

9.2 Atom inclusion [i](#)



At the recommended contour level, 94% of all backbone atoms, 84% of all non-hydrogen atoms, are inside the map.