



Full wwPDB X-ray Structure Validation Report ⓘ

Dec 17, 2023 – 10:38 AM EST

PDB ID : 1QFY
Title : PEA FNR Y308S MUTANT IN COMPLEX WITH NADP+
Authors : Deng, Z.; Aliverti, A.; Zanetti, G.; Arakaki, A.K.; Ottado, J.; Orellano, E.G.;
Calcaterra, N.B.; Ceccarelli, E.A.; Carrillo, N.; Karplus, P.A.
Deposited on : 1999-04-18
Resolution : 1.80 Å(reported)

This is a Full wwPDB X-ray Structure Validation Report for a publicly released PDB entry.

We welcome your comments at validation@mail.wwpdb.org

A user guide is available at

<https://www.wwpdb.org/validation/2017/XrayValidationReportHelp>

with specific help available everywhere you see the ⓘ symbol.

The types of validation reports are described at

<http://www.wwpdb.org/validation/2017/FAQs#types>.

The following versions of software and data (see [references ⓘ](#)) were used in the production of this report:

MolProbity : 4.02b-467
Mogul : 1.8.5 (274361), CSD as541be (2020)
Xtriage (Phenix) : 1.13
EDS : 2.36
buster-report : 1.1.7 (2018)
Percentile statistics : 20191225.v01 (using entries in the PDB archive December 25th 2019)
Refmac : 5.8.0158
CCP4 : 7.0.044 (Gargrove)
Ideal geometry (proteins) : Engh & Huber (2001)
Ideal geometry (DNA, RNA) : Parkinson et al. (1996)
Validation Pipeline (wwPDB-VP) : 2.36

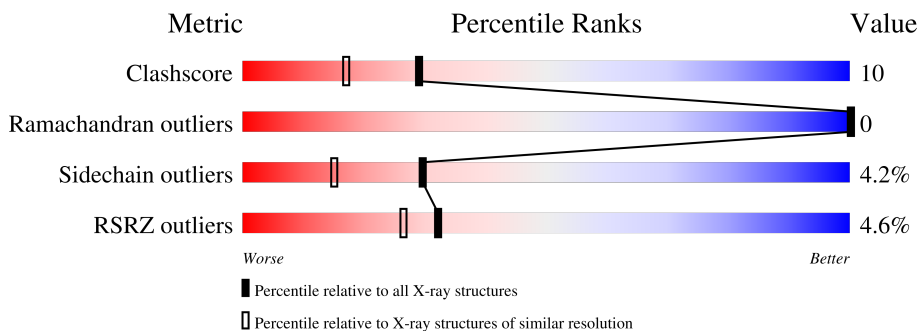
1 Overall quality at a glance

The following experimental techniques were used to determine the structure:

X-RAY DIFFRACTION

The reported resolution of this entry is 1.80 Å.

Percentile scores (ranging between 0-100) for global validation metrics of the entry are shown in the following graphic. The table shows the number of entries on which the scores are based.



Metric	Whole archive (#Entries)	Similar resolution (#Entries, resolution range(Å))
Clashscore	141614	6793 (1.80-1.80)
Ramachandran outliers	138981	6697 (1.80-1.80)
Sidechain outliers	138945	6696 (1.80-1.80)
RSRZ outliers	127900	5850 (1.80-1.80)

The table below summarises the geometric issues observed across the polymeric chains and their fit to the electron density. The red, orange, yellow and green segments of the lower bar indicate the fraction of residues that contain outliers for ≥ 3 , 2, 1 and 0 types of geometric quality criteria respectively. A grey segment represents the fraction of residues that are not modelled. The numeric value for each fraction is indicated below the corresponding segment, with a dot representing fractions $\leq 5\%$. The upper red bar (where present) indicates the fraction of residues that have poor fit to the electron density. The numeric value is given above the bar.

Mol	Chain	Length	Quality of chain
1	A	308	 5% (Poor fit) 80% (0-1 outliers) 18% (2-3 outliers) • (Not modelled)
1	B	308	 4% (Poor fit) 80% (0-1 outliers) 15% (2-3 outliers) • • (Not modelled)

2 Entry composition [i](#)

There are 5 unique types of molecules in this entry. The entry contains 5708 atoms, of which 0 are hydrogens and 0 are deuteriums.

In the tables below, the ZeroOcc column contains the number of atoms modelled with zero occupancy, the AltConf column contains the number of residues with at least one atom in alternate conformation and the Trace column contains the number of residues modelled with at most 2 atoms.

- Molecule 1 is a protein called PROTEIN (FERREDOXIN: NADP+ REDUCTASE).

Mol	Chain	Residues	Atoms					ZeroOcc	AltConf	Trace
			Total	C	N	O	S			
1	A	308	2439	1560	403	460	16	0	0	0
1	B	295	2341	1498	385	442	16	0	0	0

There are 2 discrepancies between the modelled and reference sequences:

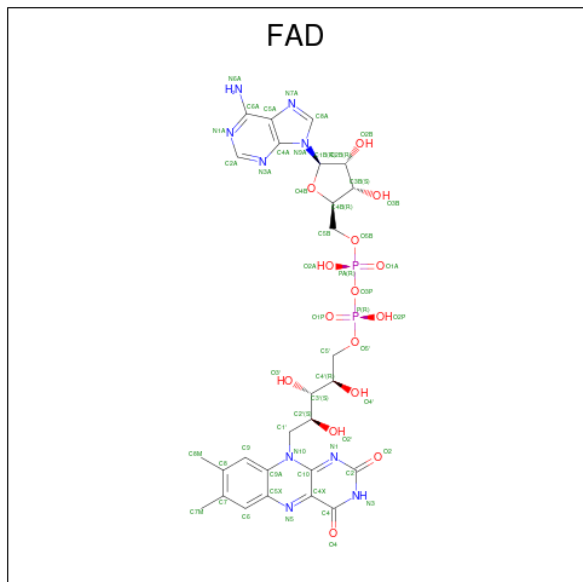
Chain	Residue	Modelled	Actual	Comment	Reference
A	308	SER	TYR	engineered mutation	UNP P10933
B	808	SER	TYR	engineered mutation	UNP P10933

- Molecule 2 is SULFATE ION (three-letter code: SO₄) (formula: O₄S).



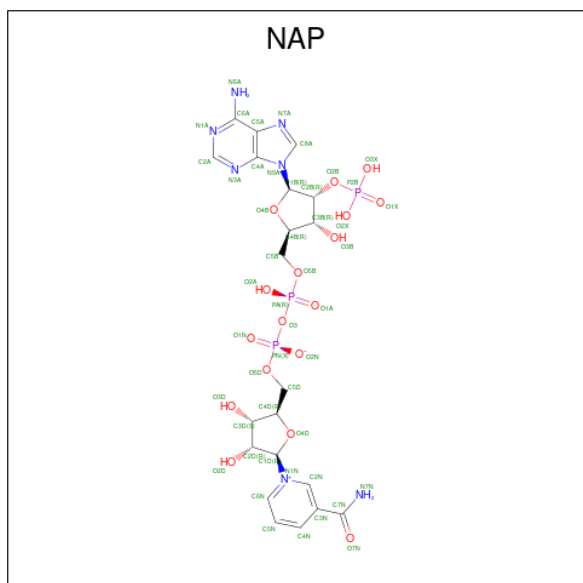
Mol	Chain	Residues	Atoms			ZeroOcc	AltConf
			Total	O	S		
2	A	1	5	4	1	0	0

- Molecule 3 is FLAVIN-ADENINE DINUCLEOTIDE (three-letter code: FAD) (formula: $C_{27}H_{33}N_9O_{15}P_2$).



Mol	Chain	Residues	Atoms				ZeroOcc	AltConf	
			Total	C	N	O			P
3	A	1	Total	C	N	O	P	0	0
			53	27	9	15	2		
3	B	1	Total	C	N	O	P	0	0
			53	27	9	15	2		

- Molecule 4 is NADP NICOTINAMIDE-ADENINE-DINUCLEOTIDE PHOSPHATE (three-letter code: NAP) (formula: $C_{21}H_{28}N_7O_{17}P_3$).



Mol	Chain	Residues	Atoms					ZeroOcc	AltConf
4	A	1	Total	C	N	O	P	0	0
			48	21	7	17	3		
4	B	1	Total	C	N	O	P	0	0
			48	21	7	17	3		

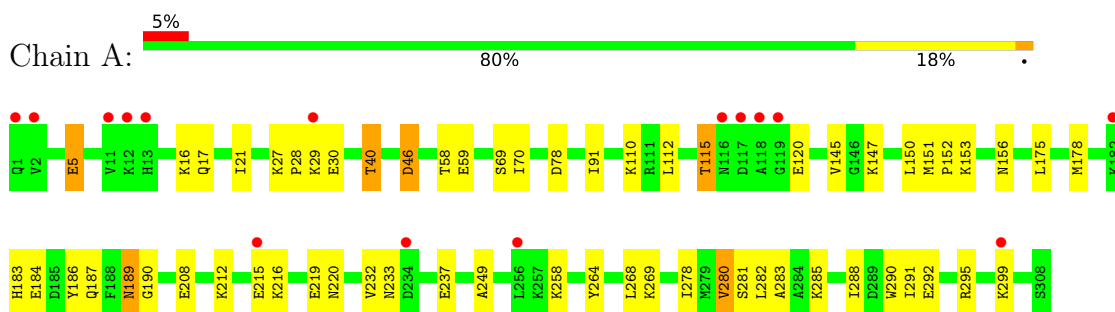
- Molecule 5 is water.

Mol	Chain	Residues	Atoms		ZeroOcc	AltConf
5	A	388	Total	O	0	0
			388	388		
5	B	333	Total	O	0	0
			333	333		

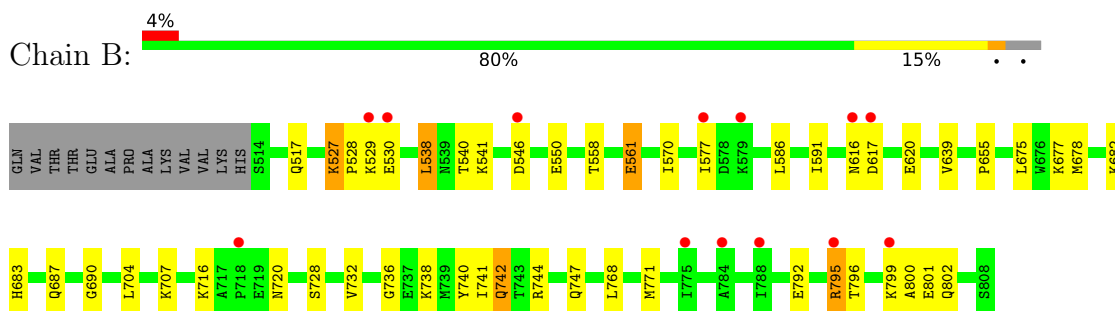
3 Residue-property plots [i](#)

These plots are drawn for all protein, RNA, DNA and oligosaccharide chains in the entry. The first graphic for a chain summarises the proportions of the various outlier classes displayed in the second graphic. The second graphic shows the sequence view annotated by issues in geometry and electron density. Residues are color-coded according to the number of geometric quality criteria for which they contain at least one outlier: green = 0, yellow = 1, orange = 2 and red = 3 or more. A red dot above a residue indicates a poor fit to the electron density ($RSRZ > 2$). Stretches of 2 or more consecutive residues without any outlier are shown as a green connector. Residues present in the sample, but not in the model, are shown in grey.

- Molecule 1: PROTEIN (FERREDOXIN: NADP+ REDUCTASE)



- Molecule 1: PROTEIN (FERREDOXIN: NADP+ REDUCTASE)



4 Data and refinement statistics

Property	Value	Source
Space group	P 1 21 1	Depositor
Cell constants a, b, c, α , β , γ	50.28Å 110.65Å 81.04Å 90.00° 94.38° 90.00°	Depositor
Resolution (Å)	8.00 – 1.80 22.07 – 1.80	Depositor EDS
% Data completeness (in resolution range)	80.5 (8.00-1.80) 80.8 (22.07-1.80)	Depositor EDS
R_{merge}	(Not available)	Depositor
R_{sym}	0.06	Depositor
$\langle I/\sigma(I) \rangle$ ¹	4.60 (at 1.80Å)	Xtrriage
Refinement program	X-PLOR 3.8	Depositor
R, R_{free}	0.196 , 0.257 0.193 , (Not available)	Depositor DCC
R_{free} test set	No test flags present.	wwPDB-VP
Wilson B-factor (Å ²)	21.3	Xtrriage
Anisotropy	0.819	Xtrriage
Bulk solvent k_{sol} (e/Å ³), B_{sol} (Å ²)	0.40 , 118.7	EDS
L-test for twinning ²	$\langle L \rangle = 0.49$, $\langle L^2 \rangle = 0.32$	Xtrriage
Estimated twinning fraction	No twinning to report.	Xtrriage
F_o, F_c correlation	0.96	EDS
Total number of atoms	5708	wwPDB-VP
Average B, all atoms (Å ²)	34.0	wwPDB-VP

Xtrriage's analysis on translational NCS is as follows: *The largest off-origin peak in the Patterson function is 10.83% of the height of the origin peak. No significant pseudotranslation is detected.*

¹Intensities estimated from amplitudes.

²Theoretical values of $\langle |L| \rangle$, $\langle L^2 \rangle$ for acentric reflections are 0.5, 0.333 respectively for untwinned datasets, and 0.375, 0.2 for perfectly twinned datasets.

5 Model quality [i](#)

5.1 Standard geometry [i](#)

Bond lengths and bond angles in the following residue types are not validated in this section: SO4, FAD, NAP

The Z score for a bond length (or angle) is the number of standard deviations the observed value is removed from the expected value. A bond length (or angle) with $|Z| > 5$ is considered an outlier worth inspection. RMSZ is the root-mean-square of all Z scores of the bond lengths (or angles).

Mol	Chain	Bond lengths		Bond angles	
		RMSZ	# Z >5	RMSZ	# Z >5
1	A	0.50	0/2492	0.69	0/3356
1	B	0.46	0/2392	0.70	1/3219 (0.0%)
All	All	0.48	0/4884	0.70	1/6575 (0.0%)

There are no bond length outliers.

All (1) bond angle outliers are listed below:

Mol	Chain	Res	Type	Atoms	Z	Observed(°)	Ideal(°)
1	B	538	LEU	CA-CB-CG	7.36	132.23	115.30

There are no chirality outliers.

There are no planarity outliers.

5.2 Too-close contacts [i](#)

In the following table, the Non-H and H(model) columns list the number of non-hydrogen atoms and hydrogen atoms in the chain respectively. The H(added) column lists the number of hydrogen atoms added and optimized by MolProbity. The Clashes column lists the number of clashes within the asymmetric unit, whereas Symm-Clashes lists symmetry-related clashes.

Mol	Chain	Non-H	H(model)	H(added)	Clashes	Symm-Clashes
1	A	2439	0	2446	48	0
1	B	2341	0	2338	45	0
2	A	5	0	0	0	0
3	A	53	0	31	2	0
3	B	53	0	31	0	0
4	A	48	0	25	1	0
4	B	48	0	25	6	0
5	A	388	0	0	6	0

Continued on next page...

Continued from previous page...

Mol	Chain	Non-H	H(model)	H(added)	Clashes	Symm-Clashes
5	B	333	0	0	4	0
All	All	5708	0	4896	95	0

The all-atom clashscore is defined as the number of clashes found per 1000 atoms (including hydrogen atoms). The all-atom clashscore for this structure is 10.

All (95) close contacts within the same asymmetric unit are listed below, sorted by their clash magnitude.

Atom-1	Atom-2	Interatomic distance (Å)	Clash overlap (Å)
1:B:541:LYS:HD2	1:B:550:GLU:HG2	1.54	0.89
1:A:183:HIS:H	1:A:187:GLN:NE2	1.78	0.81
1:A:21:ILE:HD13	1:A:147:LYS:HG2	1.65	0.77
1:B:675:LEU:HD23	1:B:678:MET:HE2	1.66	0.76
4:B:810:NAP:H3D	5:B:1723:HOH:O	1.86	0.74
1:A:208:GLU:HG2	1:A:212:LYS:HE3	1.72	0.72
1:B:742:GLN:HE22	4:B:810:NAP:C2A	2.04	0.70
1:B:768:LEU:HD23	4:B:810:NAP:H4D	1.74	0.69
1:B:675:LEU:HD23	1:B:678:MET:CE	2.23	0.68
1:A:21:ILE:CD1	1:A:147:LYS:HG2	2.23	0.67
1:A:175:LEU:HD23	1:A:178:MET:CE	2.25	0.67
1:B:683:HIS:H	1:B:687:GLN:NE2	1.93	0.65
1:A:183:HIS:H	1:A:187:GLN:HE21	1.42	0.63
1:B:795:ARG:NH1	1:B:799:LYS:HZ2	1.96	0.63
1:A:295:ARG:HE	1:A:299:LYS:HE3	1.63	0.62
1:A:268:LEU:HD23	4:A:310:NAP:H4D	1.82	0.60
1:A:40:THR:HG23	5:B:1302:HOH:O	2.01	0.60
1:A:175:LEU:HD23	1:A:178:MET:HE2	1.84	0.60
1:A:70:ILE:HG23	1:A:91:ILE:HD11	1.84	0.59
1:B:740:TYR:HB3	1:B:742:GLN:HE21	1.68	0.59
1:A:216:LYS:HB3	1:A:216:LYS:NZ	2.18	0.58
1:B:741:ILE:HG22	4:B:810:NAP:H2A	1.86	0.57
1:A:27:LYS:HB3	1:A:29:LYS:NZ	2.20	0.57
1:A:16:LYS:O	1:A:153:LYS:HE3	2.05	0.57
1:B:527:LYS:HB3	1:B:529:LYS:HZ3	1.70	0.56
3:A:309:FAD:H8A	5:A:1528:HOH:O	2.05	0.56
1:A:69:SER:HB2	1:A:145:VAL:HG13	1.87	0.55
1:B:795:ARG:HD2	1:B:799:LYS:HZ1	1.71	0.55
1:B:792:GLU:O	1:B:796:THR:HG23	2.07	0.55
1:A:269:LYS:HD2	5:A:1510:HOH:O	2.05	0.55
1:B:528:PRO:HD2	1:B:529:LYS:HZ3	1.72	0.55
1:B:616:ASN:HD21	1:B:620:GLU:HB2	1.72	0.55

Continued on next page...

Continued from previous page...

Atom-1	Atom-2	Interatomic distance (Å)	Clash overlap (Å)
1:B:517:GLN:HE22	1:B:677:LYS:NZ	2.06	0.54
1:B:742:GLN:HE22	4:B:810:NAP:H2A	1.71	0.54
1:B:768:LEU:O	1:B:771:MET:HG2	2.08	0.54
1:A:29:LYS:N	1:A:29:LYS:HD3	2.24	0.53
1:B:546:ASP:HB2	5:B:1600:HOH:O	2.08	0.53
1:A:249:ALA:HB1	1:A:282:LEU:HD21	1.91	0.53
1:A:281:SER:O	1:A:285:LYS:HG2	2.11	0.51
1:B:740:TYR:HB3	1:B:742:GLN:NE2	2.25	0.51
1:A:212:LYS:O	1:A:216:LYS:HG3	2.11	0.50
1:A:78:ASP:HB2	5:A:1393:HOH:O	2.11	0.50
1:B:704:LEU:HD13	1:B:707:LYS:HD2	1.92	0.50
1:A:27:LYS:HB3	1:A:29:LYS:HZ2	1.76	0.50
1:A:283:ALA:HB1	1:A:288:ILE:HB	1.94	0.50
1:A:291:ILE:HD12	1:A:291:ILE:N	2.27	0.50
1:A:115:THR:HA	1:A:120:GLU:O	2.11	0.50
1:A:183:HIS:HB2	1:A:186:TYR:O	2.11	0.50
1:B:795:ARG:NH2	1:B:796:THR:HG22	2.26	0.49
1:A:295:ARG:HE	1:A:299:LYS:CE	2.26	0.49
1:B:683:HIS:H	1:B:687:GLN:HE21	1.57	0.49
1:B:800:ALA:O	1:B:801:GLU:HB2	2.13	0.49
1:B:529:LYS:H	1:B:529:LYS:HE2	1.78	0.49
1:A:208:GLU:O	1:A:212:LYS:HG3	2.14	0.48
1:A:190:GLY:O	1:A:220:ASN:HB2	2.14	0.48
1:A:152:PRO:HD3	1:A:264:TYR:OH	2.13	0.48
1:B:527:LYS:HB3	1:B:529:LYS:NZ	2.29	0.48
1:B:744:ARG:HH11	1:B:747:GLN:HE22	1.59	0.47
1:B:682:LYS:HA	1:B:687:GLN:HE22	1.79	0.47
1:B:586:LEU:C	1:B:586:LEU:HD12	2.36	0.46
1:B:744:ARG:HH11	1:B:747:GLN:NE2	2.14	0.45
1:A:30:GLU:HG3	5:A:1091:HOH:O	2.16	0.45
1:B:728:SER:O	1:B:738:LYS:HG2	2.16	0.45
1:B:732:VAL:HG13	1:B:736:GLY:HA2	1.99	0.45
1:A:28:PRO:HG2	1:A:29:LYS:HD3	1.99	0.45
1:B:570:ILE:HG23	1:B:591:ILE:HD11	1.97	0.45
1:A:28:PRO:HD2	1:A:29:LYS:HZ2	1.81	0.45
1:A:29:LYS:HD3	1:A:29:LYS:H	1.82	0.44
1:A:215:GLU:HB2	5:A:1618:HOH:O	2.17	0.44
1:B:527:LYS:N	1:B:527:LYS:HD3	2.32	0.44
1:A:280:VAL:HG23	1:A:290:TRP:HB3	1.99	0.44
1:B:802:GLN:NE2	5:B:1494:HOH:O	2.48	0.44
1:A:17:GLN:HG3	1:A:151:MET:O	2.18	0.44

Continued on next page...

Continued from previous page...

Atom-1	Atom-2	Interatomic distance (Å)	Clash overlap (Å)
1:A:27:LYS:N	1:A:27:LYS:HD2	2.33	0.44
1:A:233:ASN:HD21	1:A:237:GLU:CD	2.21	0.44
1:B:716:LYS:HE3	1:B:716:LYS:HB2	1.89	0.43
1:B:690:GLY:O	1:B:720:ASN:HB2	2.18	0.43
1:B:517:GLN:HE22	1:B:677:LYS:HZ2	1.65	0.43
1:A:21:ILE:HD12	1:A:150:LEU:HD11	1.99	0.43
1:A:5:GLU:O	1:A:5:GLU:HG3	2.19	0.43
1:A:219:GLU:HB2	5:A:1395:HOH:O	2.19	0.42
1:A:58:THR:O	1:A:59:GLU:HG2	2.19	0.42
1:A:216:LYS:NZ	1:A:216:LYS:CB	2.82	0.42
1:B:795:ARG:HH21	1:B:796:THR:HG22	1.83	0.42
1:B:527:LYS:HB3	1:B:529:LYS:HE2	2.02	0.41
1:A:46:ASP:OD1	1:A:46:ASP:N	2.48	0.41
1:A:178:MET:HE2	1:A:178:MET:HB2	1.82	0.41
1:B:740:TYR:CB	1:B:742:GLN:HE21	2.30	0.41
1:B:742:GLN:NE2	1:B:742:GLN:H	2.18	0.41
1:B:771:MET:HA	4:B:810:NAP:N1A	2.36	0.41
1:B:655:PRO:HB2	1:B:687:GLN:O	2.21	0.41
1:A:112:LEU:HD11	3:A:309:FAD:N7A	2.36	0.40
1:A:156:ASN:ND2	1:A:189:ASN:HB3	2.37	0.40
1:B:795:ARG:CZ	1:B:799:LYS:HD2	2.51	0.40
1:B:558:THR:O	1:B:561:GLU:HB2	2.22	0.40

There are no symmetry-related clashes.

5.3 Torsion angles [i](#)

5.3.1 Protein backbone [i](#)

In the following table, the Percentiles column shows the percent Ramachandran outliers of the chain as a percentile score with respect to all X-ray entries followed by that with respect to entries of similar resolution.

The Analysed column shows the number of residues for which the backbone conformation was analysed, and the total number of residues.

Mol	Chain	Analysed	Favoured	Allowed	Outliers	Percentiles	
1	A	306/308 (99%)	298 (97%)	8 (3%)	0	100	100
1	B	293/308 (95%)	285 (97%)	8 (3%)	0	100	100
All	All	599/616 (97%)	583 (97%)	16 (3%)	0	100	100

There are no Ramachandran outliers to report.

5.3.2 Protein sidechains [i](#)

In the following table, the Percentiles column shows the percent sidechain outliers of the chain as a percentile score with respect to all X-ray entries followed by that with respect to entries of similar resolution.

The Analysed column shows the number of residues for which the sidechain conformation was analysed, and the total number of residues.

Mol	Chain	Analysed	Rotameric	Outliers	Percentiles	
1	A	267/267 (100%)	255 (96%)	12 (4%)	27	13
1	B	256/267 (96%)	246 (96%)	10 (4%)	32	17
All	All	523/534 (98%)	501 (96%)	22 (4%)	30	15

All (22) residues with a non-rotameric sidechain are listed below:

Mol	Chain	Res	Type
1	A	5	GLU
1	A	40	THR
1	A	46	ASP
1	A	110	LYS
1	A	115	THR
1	A	184	GLU
1	A	189	ASN
1	A	232	VAL
1	A	258	LYS
1	A	278	ILE
1	A	280	VAL
1	A	292	GLU
1	B	527	LYS
1	B	530	GLU
1	B	538	LEU
1	B	540	THR
1	B	561	GLU
1	B	577	ILE
1	B	617	ASP
1	B	639	VAL
1	B	742	GLN
1	B	795	ARG

Sometimes sidechains can be flipped to improve hydrogen bonding and reduce clashes. All (11) such sidechains are listed below:

Mol	Chain	Res	Type
1	A	17	GLN
1	A	156	ASN
1	A	183	HIS
1	A	187	GLN
1	A	247	GLN
1	B	517	GLN
1	B	656	ASN
1	B	683	HIS
1	B	687	GLN
1	B	742	GLN
1	B	747	GLN

5.3.3 RNA [i](#)

There are no RNA molecules in this entry.

5.4 Non-standard residues in protein, DNA, RNA chains [i](#)

There are no non-standard protein/DNA/RNA residues in this entry.

5.5 Carbohydrates [i](#)

There are no monosaccharides in this entry.

5.6 Ligand geometry [i](#)

5 ligands are modelled in this entry.

In the following table, the Counts columns list the number of bonds (or angles) for which Mogul statistics could be retrieved, the number of bonds (or angles) that are observed in the model and the number of bonds (or angles) that are defined in the Chemical Component Dictionary. The Link column lists molecule types, if any, to which the group is linked. The Z score for a bond length (or angle) is the number of standard deviations the observed value is removed from the expected value. A bond length (or angle) with $|Z| > 2$ is considered an outlier worth inspection. RMSZ is the root-mean-square of all Z scores of the bond lengths (or angles).

Mol	Type	Chain	Res	Link	Bond lengths			Bond angles		
					Counts	RMSZ	$\# Z > 2$	Counts	RMSZ	$\# Z > 2$
2	SO4	A	311	-	4,4,4	0.31	0	6,6,6	0.17	0
3	FAD	A	309	-	53,58,58	1.21	7 (13%)	68,89,89	0.90	2 (2%)
3	FAD	B	809	-	53,58,58	1.27	7 (13%)	68,89,89	0.88	2 (2%)

Mol	Type	Chain	Res	Link	Bond lengths			Bond angles		
					Counts	RMSZ	# Z > 2	Counts	RMSZ	# Z > 2
4	NAP	A	310	-	45,52,52	1.45	8 (17%)	56,80,80	1.30	5 (8%)
4	NAP	B	810	-	45,52,52	1.47	7 (15%)	56,80,80	1.31	5 (8%)

In the following table, the Chirals column lists the number of chiral outliers, the number of chiral centers analysed, the number of these observed in the model and the number defined in the Chemical Component Dictionary. Similar counts are reported in the Torsion and Rings columns. '-' means no outliers of that kind were identified.

Mol	Type	Chain	Res	Link	Chirals	Torsions	Rings
4	NAP	A	310	-	-	11/31/67/67	0/5/5/5
3	FAD	A	309	-	-	0/30/50/50	0/6/6/6
4	NAP	B	810	-	-	8/31/67/67	0/5/5/5
3	FAD	B	809	-	-	0/30/50/50	0/6/6/6

All (29) bond length outliers are listed below:

Mol	Chain	Res	Type	Atoms	Z	Observed(Å)	Ideal(Å)
4	B	810	NAP	C3N-C7N	-3.91	1.44	1.50
4	B	810	NAP	O4B-C1B	3.79	1.46	1.41
4	A	310	NAP	O4B-C1B	3.65	1.46	1.41
3	B	809	FAD	O4B-C1B	3.52	1.46	1.41
4	B	810	NAP	C2N-N1N	3.03	1.38	1.35
3	B	809	FAD	C4X-N5	2.96	1.36	1.30
4	B	810	NAP	O4D-C1D	2.79	1.45	1.41
4	A	310	NAP	C2N-N1N	2.67	1.38	1.35
3	A	309	FAD	C4X-N5	2.67	1.35	1.30
4	A	310	NAP	O4B-C4B	2.63	1.50	1.45
4	A	310	NAP	C3N-C7N	-2.56	1.46	1.50
3	B	809	FAD	C8A-N7A	-2.52	1.30	1.34
3	A	309	FAD	O4B-C1B	2.51	1.44	1.41
4	B	810	NAP	C2D-C1D	-2.40	1.50	1.53
3	A	309	FAD	P-O2P	-2.38	1.44	1.55
4	A	310	NAP	C4A-N3A	-2.37	1.32	1.35
4	A	310	NAP	C2D-C1D	-2.27	1.50	1.53
3	B	809	FAD	C9A-C5X	2.22	1.44	1.41
4	B	810	NAP	C6N-N1N	2.19	1.40	1.35
3	B	809	FAD	O5'-C5'	2.17	1.53	1.44
4	A	310	NAP	O4D-C1D	2.15	1.44	1.41
3	B	809	FAD	PA-O2A	-2.13	1.45	1.55
3	A	309	FAD	C1'-C2'	2.12	1.55	1.52
3	A	309	FAD	PA-O2A	-2.11	1.45	1.55

Continued on next page...

Continued from previous page...

Mol	Chain	Res	Type	Atoms	Z	Observed(Å)	Ideal(Å)
3	B	809	FAD	C1'-C2'	2.10	1.55	1.52
3	A	309	FAD	C8A-N7A	-2.09	1.31	1.34
3	A	309	FAD	O5'-C5'	2.01	1.52	1.44
4	B	810	NAP	P2B-O2B	2.01	1.63	1.59
4	A	310	NAP	P2B-O3X	-2.00	1.47	1.54

All (14) bond angle outliers are listed below:

Mol	Chain	Res	Type	Atoms	Z	Observed(°)	Ideal(°)
4	B	810	NAP	N3A-C2A-N1A	-5.03	120.82	128.68
4	A	310	NAP	N3A-C2A-N1A	-4.76	121.24	128.68
4	B	810	NAP	C3D-C2D-C1D	3.16	105.73	100.98
4	A	310	NAP	C3D-C2D-C1D	2.49	104.72	100.98
3	A	309	FAD	C3B-C2B-C1B	2.31	104.46	100.98
4	A	310	NAP	O2A-PA-O1A	2.31	123.67	112.24
4	A	310	NAP	C1B-N9A-C4A	-2.17	122.83	126.64
3	A	309	FAD	C4-N3-C2	-2.12	121.73	125.64
4	B	810	NAP	C3N-C7N-N7N	-2.10	115.23	117.75
4	B	810	NAP	C1B-N9A-C4A	-2.09	122.97	126.64
4	A	310	NAP	C3N-C7N-N7N	-2.07	115.27	117.75
3	B	809	FAD	C4-N3-C2	-2.06	121.83	125.64
4	B	810	NAP	O4D-C4D-C3D	2.04	109.15	105.11
3	B	809	FAD	C3B-C2B-C1B	2.00	104.00	100.98

There are no chirality outliers.

All (19) torsion outliers are listed below:

Mol	Chain	Res	Type	Atoms
4	A	310	NAP	C5B-O5B-PA-O3
4	A	310	NAP	C5D-O5D-PN-O2N
4	A	310	NAP	O4D-C1D-N1N-C6N
4	B	810	NAP	C5B-O5B-PA-O2A
4	B	810	NAP	C5B-O5B-PA-O3
4	B	810	NAP	O4D-C1D-N1N-C6N
4	A	310	NAP	O4B-C4B-C5B-O5B
4	A	310	NAP	C3B-C4B-C5B-O5B
4	B	810	NAP	O4B-C4B-C5B-O5B
4	B	810	NAP	C3B-C4B-C5B-O5B
4	A	310	NAP	C2B-O2B-P2B-O3X
4	A	310	NAP	C5D-O5D-PN-O3
4	B	810	NAP	C2B-O2B-P2B-O2X
4	A	310	NAP	C5B-O5B-PA-O1A

Continued on next page...

Continued from previous page...

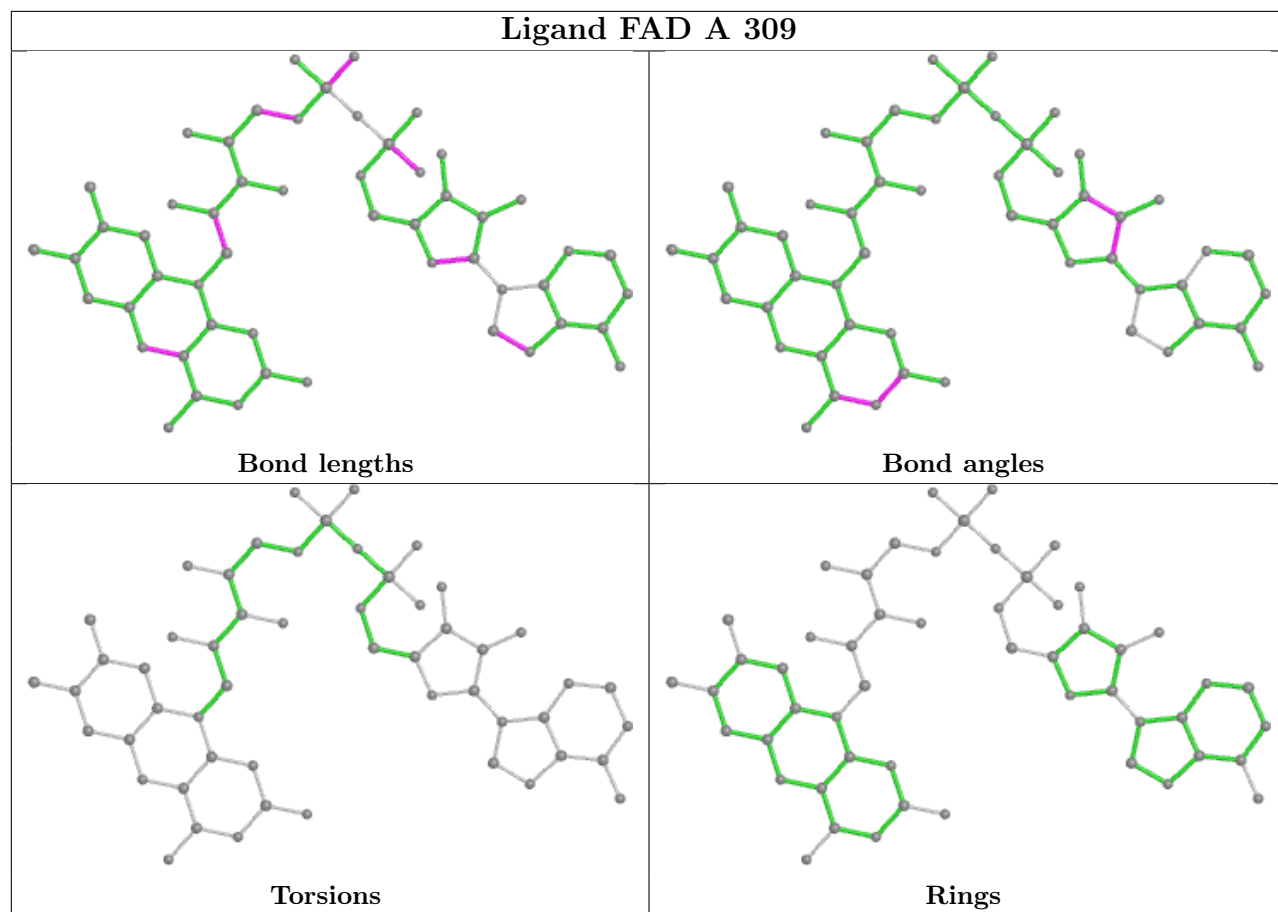
Mol	Chain	Res	Type	Atoms
4	B	810	NAP	C5B-O5B-PA-O1A
4	B	810	NAP	O4D-C4D-C5D-O5D
4	A	310	NAP	C2B-O2B-P2B-O2X
4	A	310	NAP	C5D-O5D-PN-O1N
4	A	310	NAP	O4D-C4D-C5D-O5D

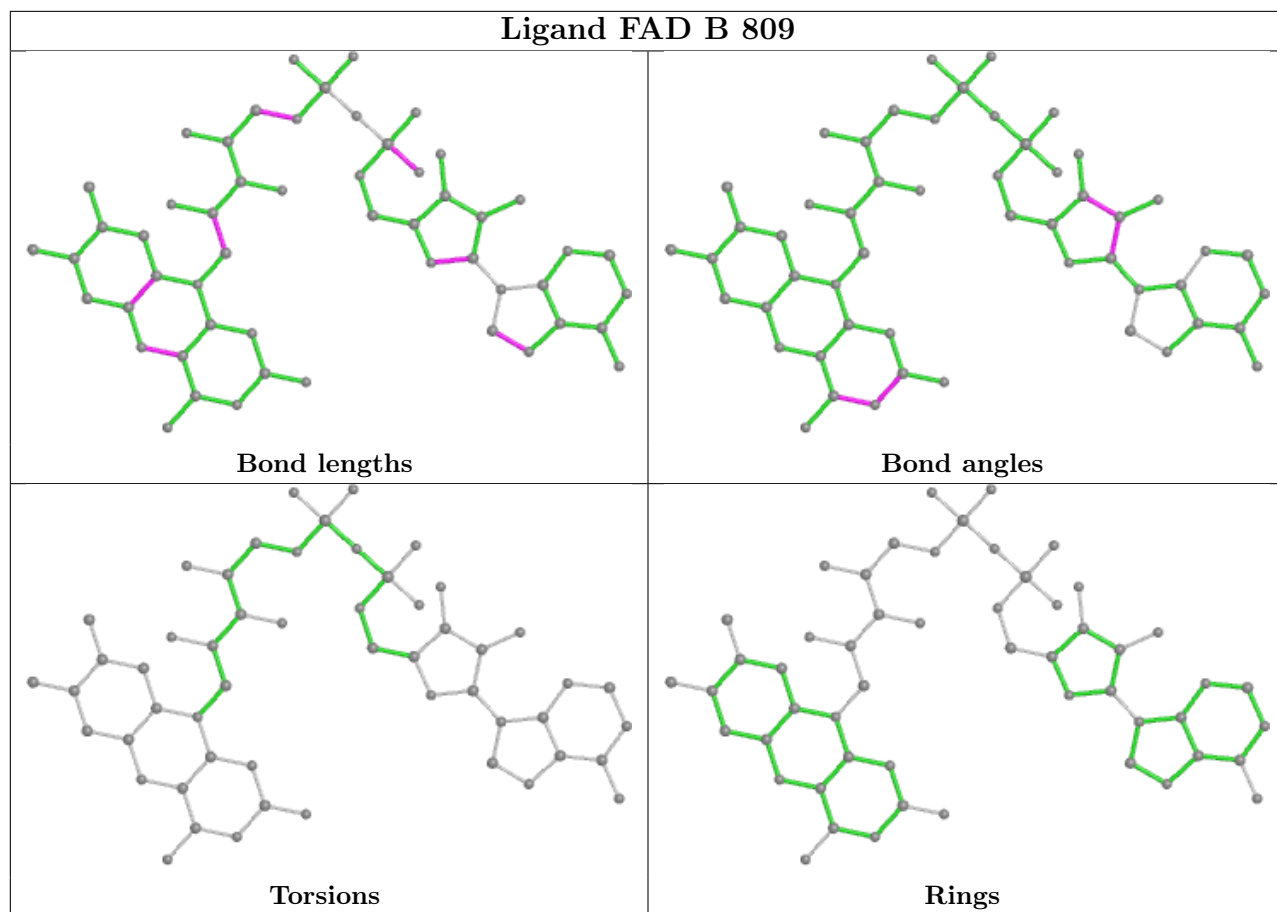
There are no ring outliers.

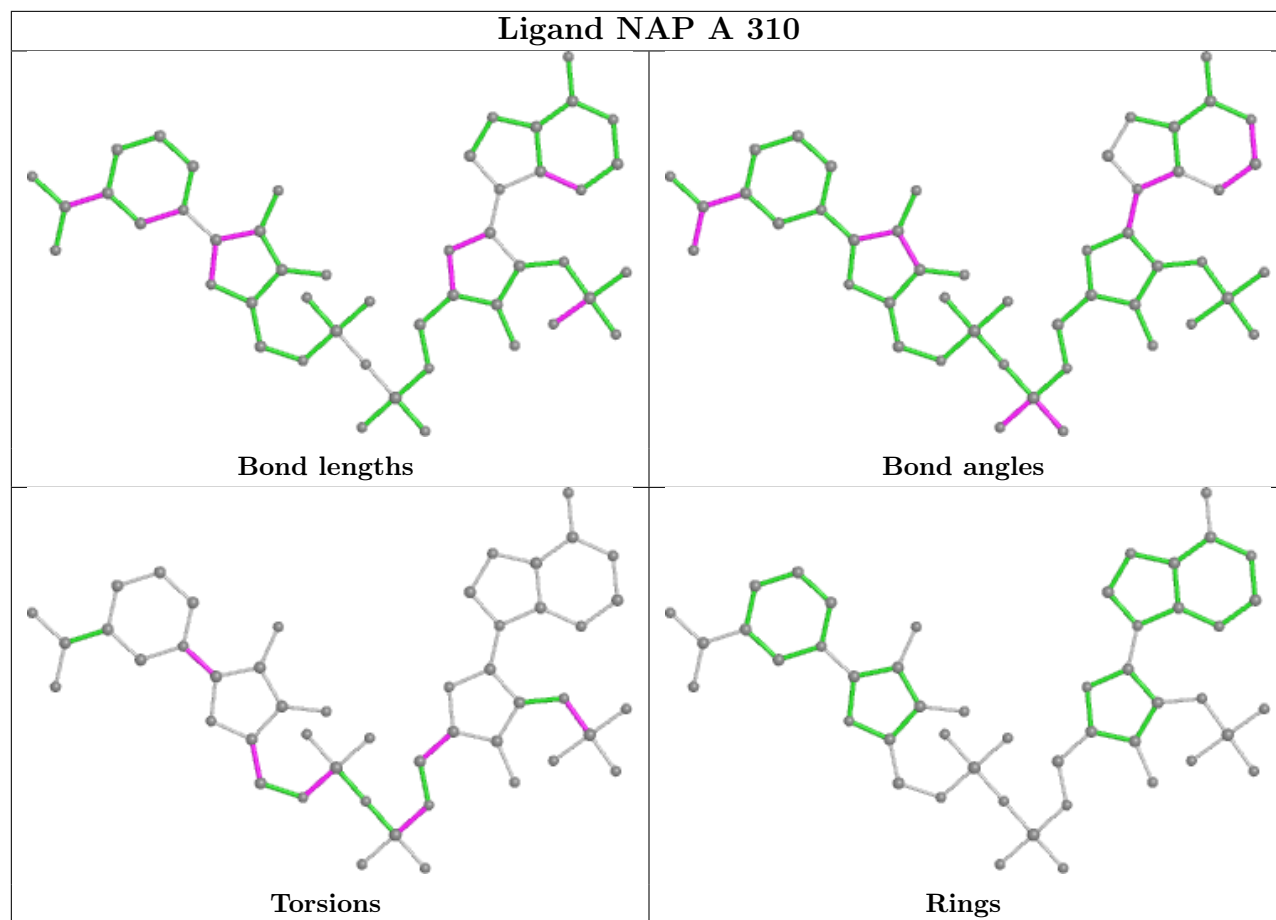
3 monomers are involved in 9 short contacts:

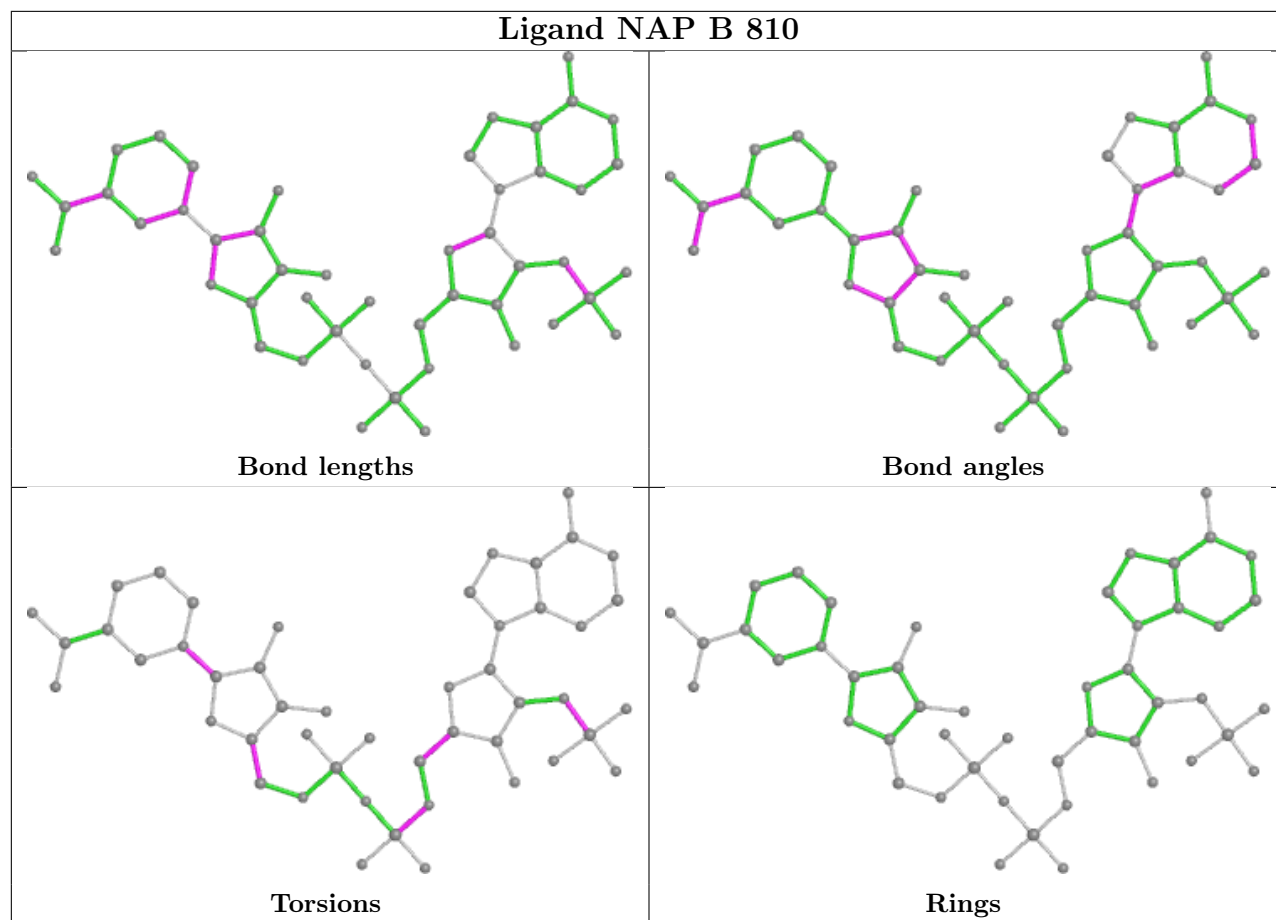
Mol	Chain	Res	Type	Clashes	Symm-Clashes
3	A	309	FAD	2	0
4	A	310	NAP	1	0
4	B	810	NAP	6	0

The following is a two-dimensional graphical depiction of Mogul quality analysis of bond lengths, bond angles, torsion angles, and ring geometry for all instances of the Ligand of Interest. In addition, ligands with molecular weight > 250 and outliers as shown on the validation Tables will also be included. For torsion angles, if less than 5% of the Mogul distribution of torsion angles is within 10 degrees of the torsion angle in question, then that torsion angle is considered an outlier. Any bond that is central to one or more torsion angles identified as an outlier by Mogul will be highlighted in the graph. For rings, the root-mean-square deviation (RMSD) between the ring in question and similar rings identified by Mogul is calculated over all ring torsion angles. If the average RMSD is greater than 60 degrees and the minimal RMSD between the ring in question and any Mogul-identified rings is also greater than 60 degrees, then that ring is considered an outlier. The outliers are highlighted in purple. The color gray indicates Mogul did not find sufficient equivalents in the CSD to analyse the geometry.









5.7 Other polymers [\(i\)](#)

There are no such residues in this entry.

5.8 Polymer linkage issues [\(i\)](#)

There are no chain breaks in this entry.

6 Fit of model and data

6.1 Protein, DNA and RNA chains

In the following table, the column labelled ‘#RSRZ > 2’ contains the number (and percentage) of RSRZ outliers, followed by percent RSRZ outliers for the chain as percentile scores relative to all X-ray entries and entries of similar resolution. The OWAB column contains the minimum, median, 95th percentile and maximum values of the occupancy-weighted average B-factor per residue. The column labelled ‘Q < 0.9’ lists the number of (and percentage) of residues with an average occupancy less than 0.9.

Mol	Chain	Analysed	<RSRZ>	#RSRZ>2	OWAB(Å ²)	Q<0.9
1	A	308/308 (100%)	0.08	15 (4%) 29 24	13, 26, 54, 72	0
1	B	295/308 (95%)	0.07	13 (4%) 34 28	16, 28, 59, 72	0
All	All	603/616 (97%)	0.08	28 (4%) 32 26	13, 27, 56, 72	0

All (28) RSRZ outliers are listed below:

Mol	Chain	Res	Type	RSRZ
1	A	13	HIS	6.5
1	A	1	GLN	4.8
1	A	12	LYS	4.3
1	A	11	VAL	4.0
1	B	617	ASP	3.9
1	A	119	GLY	3.9
1	A	117	ASP	3.7
1	A	118	ALA	3.2
1	B	795	ARG	3.1
1	B	546	ASP	2.9
1	B	799	LYS	2.8
1	A	116	ASN	2.8
1	A	299	LYS	2.7
1	B	530	GLU	2.7
1	A	234	ASP	2.5
1	B	718	PRO	2.5
1	A	29	LYS	2.3
1	B	579	LYS	2.3
1	B	616	ASN	2.2
1	B	529	LYS	2.2
1	B	788	ILE	2.2
1	A	256	LEU	2.1
1	A	182	LYS	2.1
1	A	215	GLU	2.1

Continued on next page...

Continued from previous page...

Mol	Chain	Res	Type	RSRZ
1	B	784	ALA	2.1
1	A	2	VAL	2.0
1	B	577	ILE	2.0
1	B	775	ILE	2.0

6.2 Non-standard residues in protein, DNA, RNA chains [i](#)

There are no non-standard protein/DNA/RNA residues in this entry.

6.3 Carbohydrates [i](#)

There are no monosaccharides in this entry.

6.4 Ligands [i](#)

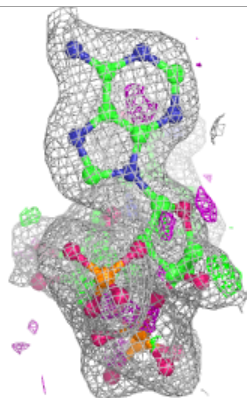
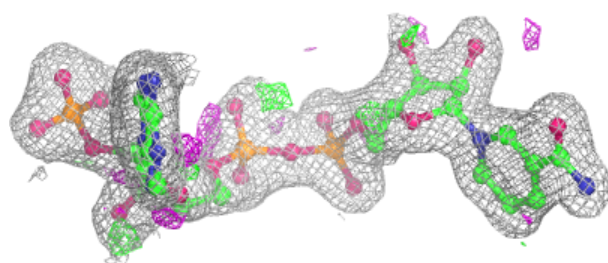
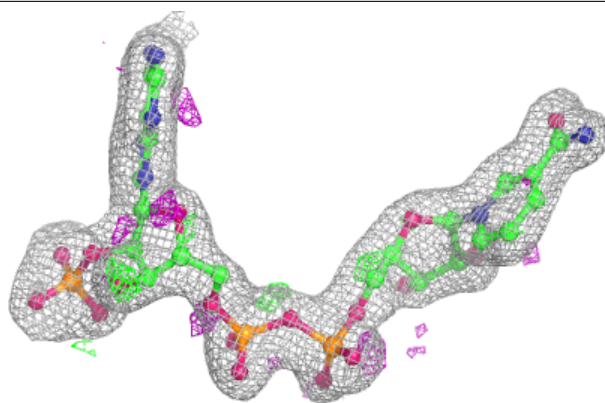
In the following table, the Atoms column lists the number of modelled atoms in the group and the number defined in the chemical component dictionary. The B-factors column lists the minimum, median, 95th percentile and maximum values of B factors of atoms in the group. The column labelled 'Q< 0.9' lists the number of atoms with occupancy less than 0.9.

Mol	Type	Chain	Res	Atoms	RSCC	RSR	B-factors(Å ²)	Q<0.9
4	NAP	B	810	48/48	0.94	0.11	25,40,48,58	0
3	FAD	B	809	53/53	0.95	0.10	17,21,67,70	0
2	SO4	A	311	5/5	0.97	0.10	39,41,44,45	0
4	NAP	A	310	48/48	0.97	0.08	17,24,29,37	0
3	FAD	A	309	53/53	0.97	0.08	14,17,54,58	0

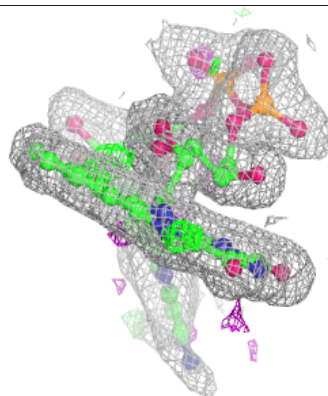
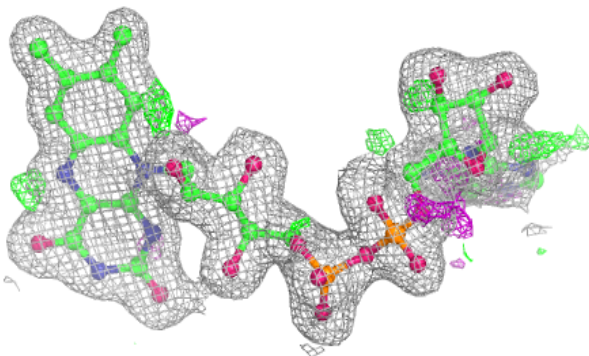
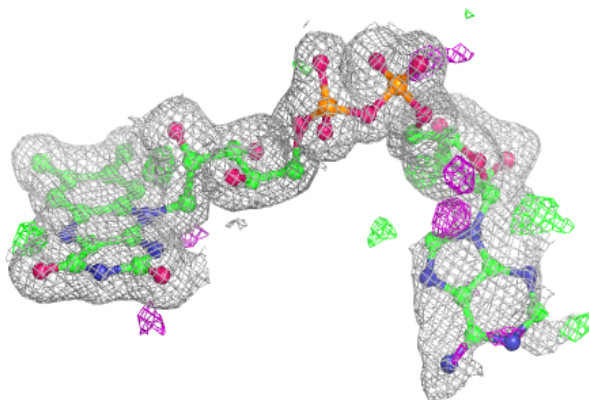
The following is a graphical depiction of the model fit to experimental electron density of all instances of the Ligand of Interest. In addition, ligands with molecular weight > 250 and outliers as shown on the geometry validation Tables will also be included. Each fit is shown from different orientation to approximate a three-dimensional view.

Electron density around NAP B 810:

$2mF_o-DF_c$ (at 0.7 rmsd) in gray
 mF_o-DF_c (at 3 rmsd) in purple (negative)
and green (positive)

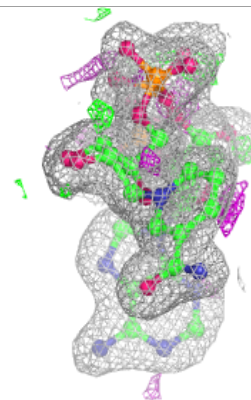
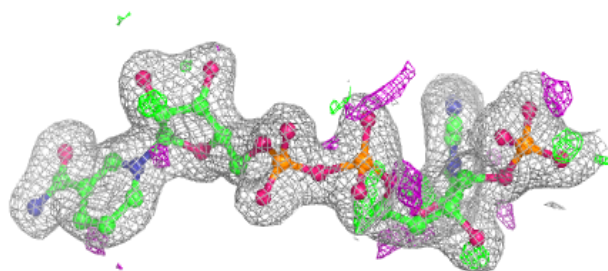
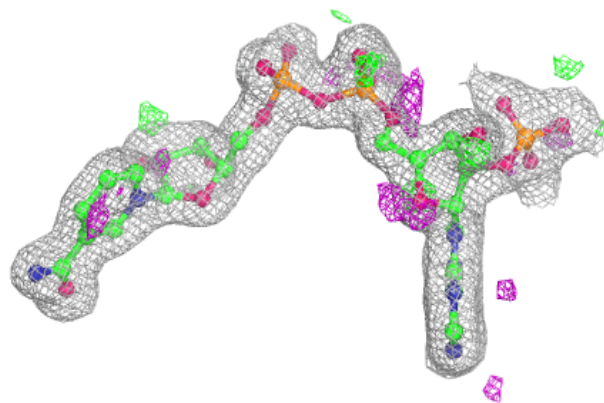
**Electron density around FAD B 809:**

$2mF_o-DF_c$ (at 0.7 rmsd) in gray
 mF_o-DF_c (at 3 rmsd) in purple (negative)
and green (positive)

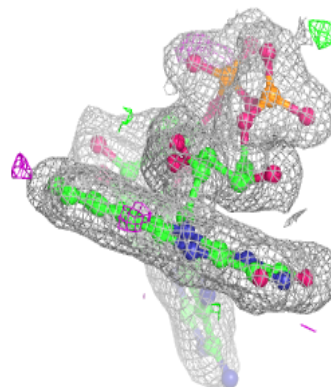
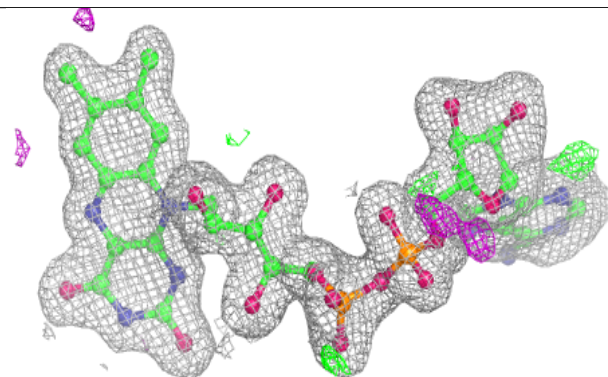
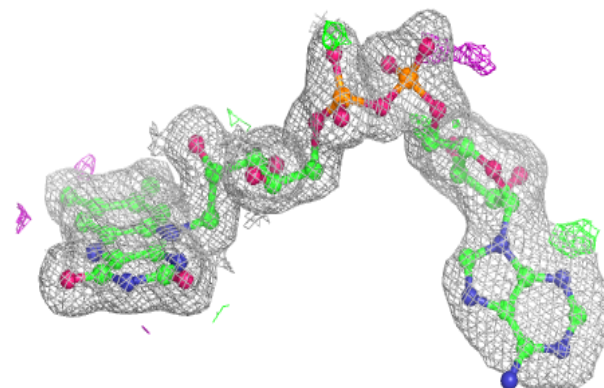


Electron density around NAP A 310:

$2mF_o-DF_c$ (at 0.7 rmsd) in gray
 mF_o-DF_c (at 3 rmsd) in purple (negative)
and green (positive)

**Electron density around FAD A 309:**

$2mF_o-DF_c$ (at 0.7 rmsd) in gray
 mF_o-DF_c (at 3 rmsd) in purple (negative)
and green (positive)



6.5 Other polymers [i](#)

There are no such residues in this entry.