



## wwPDB EM Validation Summary Report ⓘ

Jan 8, 2024 – 10:22 pm GMT

PDB ID : 8Q9J  
EMDB ID : EMD-18283  
Title : Tau - CTE-LIA7 (tau intermediate amyloid)  
Authors : Lovestam, S.; Li, D.; Scheres, S.H.W.; Goedert, M.  
Deposited on : 2023-08-20  
Resolution : 2.96 Å (reported)

This is a wwPDB EM Validation Summary Report for a publicly released PDB entry.

We welcome your comments at [validation@mail.wwpdb.org](mailto:validation@mail.wwpdb.org)

A user guide is available at

<https://www.wwpdb.org/validation/2017/EMValidationReportHelp>

with specific help available everywhere you see the ⓘ symbol.

The types of validation reports are described at

<http://www.wwpdb.org/validation/2017/FAQs#types>.

---

The following versions of software and data (see [references ⓘ](#)) were used in the production of this report:

EMDB validation analysis : 0.0.1.dev70  
MolProbity : 4.02b-467  
Percentile statistics : 20191225.v01 (using entries in the PDB archive December 25th 2019)  
MapQ : 1.9.9  
Ideal geometry (proteins) : Engh & Huber (2001)  
Ideal geometry (DNA, RNA) : Parkinson et al. (1996)  
Validation Pipeline (wwPDB-VP) : 2.36

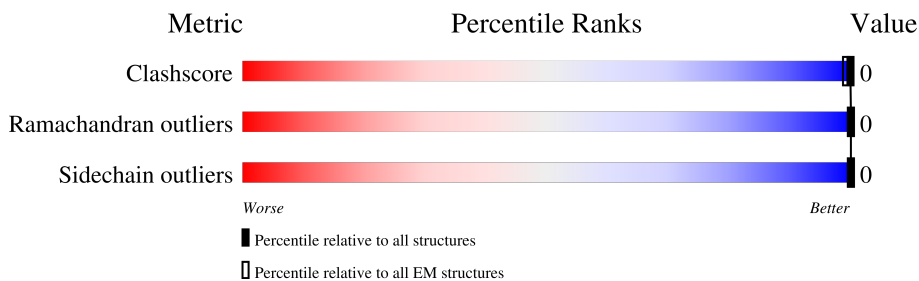
# 1 Overall quality at a glance

The following experimental techniques were used to determine the structure:

*ELECTRON MICROSCOPY*

The reported resolution of this entry is 2.96 Å.

Percentile scores (ranging between 0-100) for global validation metrics of the entry are shown in the following graphic. The table shows the number of entries on which the scores are based.



Metric	Whole archive (#Entries)	EM structures (#Entries)
Clashscore	158937	4297
Ramachandran outliers	154571	4023
Sidechain outliers	154315	3826

The table below summarises the geometric issues observed across the polymeric chains and their fit to the map. The red, orange, yellow and green segments of the bar indicate the fraction of residues that contain outliers for  $\geq 3$ , 2, 1 and 0 types of geometric quality criteria respectively. A grey segment represents the fraction of residues that are not modelled. The numeric value for each fraction is indicated below the corresponding segment, with a dot representing fractions  $\leq 5\%$ . The upper red bar (where present) indicates the fraction of residues that have poor fit to the EM map (all-atom inclusion  $< 40\%$ ). The numeric value is given above the bar.

Mol	Chain	Length	Quality of chain
1	A	382	
1	B	382	
1	C	382	
1	D	382	
1	E	382	
1	F	382	

## 2 Entry composition

There is only 1 type of molecule in this entry. The entry contains 6822 atoms, of which 3480 are hydrogens and 0 are deuteriums.

In the tables below, the AltConf column contains the number of residues with at least one atom in alternate conformation and the Trace column contains the number of residues modelled with at most 2 atoms.

- Molecule 1 is a protein called Isoform Tau-D of Microtubule-associated protein tau.

Mol	Chain	Residues	Atoms						AltConf	Trace
			Total	C	H	N	O	S		
1	A	73	1137	351	580	101	104	1	0	0
1	C	73	1137	351	580	101	104	1	0	0
1	E	73	1137	351	580	101	104	1	0	0
1	B	73	1137	351	580	101	104	1	0	0
1	D	73	1137	351	580	101	104	1	0	0
1	F	73	1137	351	580	101	104	1	0	0

There are 6 discrepancies between the modelled and reference sequences:

Chain	Residue	Modelled	Actual	Comment	Reference
A	?	-	ALA	deletion	UNP P10636
C	?	-	ALA	deletion	UNP P10636
E	?	-	ALA	deletion	UNP P10636
B	?	-	ALA	deletion	UNP P10636
D	?	-	ALA	deletion	UNP P10636
F	?	-	ALA	deletion	UNP P10636



LEU  
ALA  
THR  
LEU  
ALA  
ASP  
VAL  
SER  
SER  
SER  
LEU  
ALA  
LYS  
GLN  
GLY  
LEU

● Molecule 1: Isoform Tau-D of Microtubule-associated protein tau

Chain E: 19% 81%

MET  
ALA  
GLU  
PRO  
ARG  
Gln  
GLU  
PHE  
GLU  
VAL  
MET  
VAL  
SER  
MET  
GLU  
ASP  
HIS  
HIS  
ALA  
GLY  
THR  
TVR  
SER  
GLY  
LEU  
GLY  
GLY  
LYS  
ASP  
ARG  
ALA  
LYS  
ASP  
GLN  
GLN  
GLY  
GLY  
TYR  
THR  
THR  
MET  
HIS  
Gln  
GLN  
ASP  
GLN  
GLU  
GLY  
GLY  
ASP  
THR  
ALA  
ASP  
THR  
ASP  
ALA  
GLY  
GLY  
LYS  
LYS  
LEU  
ARG  
GLY  
GLY  
ASP  
THR  
ALA  
LYS  
GLU  
GLY

GLY  
HIS  
VAL  
THR  
PRO  
LEU  
THR  
Gln  
SER  
ALA  
MET  
VAL  
MET  
SER  
LYS  
SER  
LYS  
ASP  
HIS  
GLY  
ALA  
GLY  
ASP  
THR  
THR  
LEU  
GLN  
GLY  
GLN  
GLY  
GLN  
GLY  
ASN  
ALA  
ASN  
THR  
ARG  
THR  
ILE  
THR  
PRO  
PRO  
SER  
PRO  
LEU  
GLU  
ASP  
GLU  
ALA  
PRO

LYS  
THR  
PRO  
SER  
SER  
GLY  
GLU  
PRO  
VAL  
PRO  
LYS  
PRO  
SER  
SER  
GLY  
ASP  
ARG  
ALA  
VAL  
GLY  
THR  
PRO  
PRO  
LYS  
LYS  
LYS  
VAL  
VAL  
VAL  
VAL  
THR  
ARG  
THR  
PRO  
ALA  
ALA  
HIS

LYS  
SER  
ARG  
LEU  
THR  
ALA  
PRO  
VAL  
VAL  
PRO  
MET  
PRO  
SER  
PRO  
ASP  
LEU  
LYS  
ASN  
VAL  
VAL  
LYS  
SER  
SER  
LYS  
ILE  
SER  
SER  
THR  
GLY  
ASN  
LEU  
GLY  
GLY  
THR  
VAL  
VAL  
GLY  
GLY  
SER  
SER  
ASN  
ASN  
LYS  
THR  
THR  
THR  
CYS  
THR  
GLY  
SER  
SER  
LYS  
ASP  
ASN  
ILE  
LYS  
HIS

VAL  
PRO  
GLY  
GLY  
SER  
SER  
V396  
R349  
F378  
ASN  
ALA  
LYS  
VAL  
LYS  
SER  
THR  
THR  
ASP  
HIS  
GLY  
ALA  
LYS  
ILE  
VAL  
TYR  
LYS  
SER  
Gln  
PRO  
VAL  
VAL  
VAL  
SER  
GLY  
ASP  
THR  
SER  
ARG  
HIS  
LEU  
SER  
VAL  
VAL  
SER  
SER  
THR  
THR  
ILE  
ASP  
MET  
VAL  
SER  
SER  
GLN  
SER  
SER  
THR  
SER  
ILE  
THR  
ALA  
THR

LEU  
ALA  
ASP  
GLU  
VAL  
SER  
SER  
SER  
LEU  
SER  
SER  
LEU

● Molecule 1: Isoform Tau-D of Microtubule-associated protein tau

Chain B: 19% 81%

MET  
ALA  
GLU  
PRO  
ARG  
Gln  
GLU  
PHE  
GLU  
VAL  
MET  
VAL  
SER  
MET  
GLU  
ASP  
HIS  
HIS  
ALA  
GLY  
THR  
TVR  
SER  
GLY  
LEU  
GLY  
GLY  
LYS  
ASP  
ARG  
ALA  
LYS  
ASP  
Gln  
Gln  
GLY  
GLY  
TYR  
THR  
THR  
MET  
HIS  
Gln  
GLN  
ASP  
GLN  
GLU  
GLY  
GLY  
ASP  
THR  
ALA  
ASP  
THR  
ASP  
ALA  
GLY  
GLY  
LYS  
LYS  
LEU  
ARG  
GLY  
GLY  
ALA  
ASP  
THR  
ALA  
LYS  
GLU  
GLY

GLY  
HIS  
VAL  
THR  
PRO  
LEU  
THR  
Gln  
SER  
ALA  
MET  
VAL  
MET  
SER  
LYS  
SER  
LYS  
ASP  
HIS  
THR  
THR  
GLY  
SER  
ASP  
ASP  
GLY  
ALA  
LYS  
ALA  
ALA  
ASP  
GLY  
THR  
THR  
ILE  
THR  
PRO  
PRO  
SER  
PRO  
LEU  
GLU  
ASP  
GLU  
ALA  
PRO

LYS  
THR  
PRO  
SER  
SER  
GLY  
GLU  
PRO  
VAL  
PRO  
LYS  
PRO  
SER  
GLY  
ASP  
LEU  
ASP  
ARG  
GLY  
SER  
SER  
LYS  
TYR  
SER  
SER  
PRO  
PRO  
GLY  
GLY  
THR  
THR  
ALA  
ALA  
ASP  
THR  
PRO  
PRO  
LYS  
LYS  
LYS  
VAL  
VAL  
VAL  
VAL  
THR  
ARG  
THR  
PRO  
ALA  
ALA  
HIS

LYS  
SER  
ARG  
LEU  
Gln  
THR  
ALA  
PRO  
VAL  
VAL  
PRO  
MET  
PRO  
SER  
PRO  
ASP  
LEU  
LYS  
ALA  
LYS  
ASN  
VAL  
VAL  
LYS  
ASP  
HIS  
GLY  
GLY  
ILE  
SER  
SER  
THR  
GLY  
ASN  
LEU  
GLY  
GLY  
THR  
VAL  
VAL  
VAL  
GLY  
GLY  
ASP  
THR  
SER  
SER  
ASN  
ASN  
LYS  
THR  
THR  
CYS  
THR  
GLY  
SER  
SER  
LYS  
ASP  
ASN  
ILE  
LYS  
HIS

VAL  
PRO  
GLY  
GLY  
SER  
SER  
V396  
F378  
Gln  
GLU  
ASN  
ALA  
LYS  
ALA  
LYS  
LYS  
THR  
ASP  
HIS  
GLY  
ALA  
ILE  
VAL  
TYR  
LYS  
SER  
PRO  
VAL  
VAL  
VAL  
SER  
SER  
GLY  
ASP  
THR  
SER  
SER  
ASN  
ASN  
VAL  
VAL  
HIS  
LEU  
SER  
SER  
THR  
GLY  
SER  
SER  
THR  
ILE  
THR  
THR  
ALA  
ALA

ASP  
GLU  
VAL  
SER  
SER  
SER  
LEU  
ALA  
SER  
SER  
LEU

● Molecule 1: Isoform Tau-D of Microtubule-associated protein tau

Chain D: 19% 81%

MET  
ALA  
GLU  
PRO  
ARG  
Gln  
GLU  
PHE  
GLU  
VAL  
MET  
VAL  
SER  
MET  
GLU  
ASP  
HIS  
HIS  
ALA  
GLY  
THR  
TVR  
SER  
GLY  
LEU  
GLY  
GLY  
LYS  
ASP  
ARG  
ALA  
LYS  
ASP  
Gln  
Gln  
GLY  
GLY  
TYR  
THR  
THR  
MET  
HIS  
Gln  
GLN  
ASP  
GLN  
GLU  
GLY  
GLY  
ASP  
THR  
ALA  
ASP  
THR  
ASP  
ALA  
GLY  
GLY  
LYS  
LYS  
LEU  
ARG  
GLY  
GLY  
ALA  
ALA  
HIS

GLY  
HIS  
VAL  
THR  
PRO  
LEU  
THR  
Gln  
SER  
ALA  
MET  
VAL  
MET  
SER  
LYS  
SER  
LYS  
ASP  
HIS  
THR  
THR  
GLY  
SER  
SER  
ASP  
ASP  
GLY  
ALA  
LYS  
ALA  
ASP  
GLY  
THR  
THR  
ILE  
THR  
PRO  
PRO  
SER  
PRO  
LEU  
GLU  
ASP  
GLU  
ALA  
PRO

LYS	THR	PRO	ARG	GLY	LEU	THR	SER	GLY	ALA	PRO	GLU	VAL	PRO	PRO	LYS	SER	GLY	ASP	LEU	LYS	ARG	ASP	GLY
LYS	SER	ARG	LEU	THR	GLN	SER	THR	ALA	PRO	VAL	PRO	MET	LYS	PRO	LYS	GLY	ASP	LEU	LYS	ARG	ASP	GLY	ASP
VAL	PRO	GLY	GLY	SER	ALA	V306	F378	ARG	GLU	ASN	ALA	LYS	LYS	ALA	THR	ASP	THR	ASP	GLY	ALA	ALA	LYS	LYS
ASP	GLU	VAL	SER	ALA	SER	LEU	ALA	GLN	GLY	LEU	LEU	LEU	LEU	LEU	LEU	LEU	LEU	LEU	LEU	LEU	LEU	LEU	LEU

● Molecule 1: Isoform Tau-D of Microtubule-associated protein tau

Chain F:  19%  81%

MET	ALA	GLU	THR	ARG	GLN	GLU	PHE	VAL	VAL	MET	GLU	ASP	HIS	ALA	GLY	THR	TYR	GLY	LEU	GLY	ASP	ALA	GLN
GLY	HIS	VAL	THR	GLN	ALA	ARG	MET	VAL	VAL	SER	LYS	LYS	ASP	GLY	THR	GLY	SER	ASP	ASP	LYS	ALA	ALA	GLN
LYS	THR	PRO	PRO	SER	THR	GLY	GLU	PRO	PRO	LYS	LYS	GLY	ASP	ARG	THR	PRO	TYR	SER	SER	PRO	GLY	VAL	THR
LYS	SER	ARG	LEU	GLN	ALA	PRO	VAL	VAL	PRO	MET	PRO	ASP	LEU	LYS	ALA	LYS	VAL	LYS	LYS	LEU	LYS	VAL	HIS
VAL	PRO	GLY	GLY	SER	V306	F378	ARG	GLU	ASN	ALA	LYS	LYS	ALA	THR	VAL	ASP	HIS	GLY	LEU	LYS	ARG	ASP	GLY
ASP	GLU	VAL	SER	ALA	SER	LEU	ALA	GLN	GLY	LEU	LEU	LEU	LEU	LEU	LEU	LEU	LEU	LEU	LEU	LEU	LEU	LEU	LEU

## 4 Experimental information

Property	Value	Source
EM reconstruction method	HELICAL	Depositor
Imposed symmetry	HELICAL, twist=-1.32°, rise=4.74 Å, axial sym=C1	Depositor
Number of segments used	5127	Depositor
Resolution determination method	FSC 0.143 CUT-OFF	Depositor
CTF correction method	PHASE FLIPPING AND AMPLITUDE CORRECTION	Depositor
Microscope	FEI TITAN KRIOS	Depositor
Voltage (kV)	300	Depositor
Electron dose ( $e^-/\text{Å}^2$ )	40	Depositor
Minimum defocus (nm)	500	Depositor
Maximum defocus (nm)	2500	Depositor
Magnification	Not provided	
Image detector	FEI FALCON IV (4k x 4k)	Depositor
Maximum map value	0.028	Depositor
Minimum map value	-0.015	Depositor
Average map value	0.000	Depositor
Map value standard deviation	0.002	Depositor
Recommended contour level	0.00674	Depositor
Map size (Å)	279.168, 279.168, 279.168	wwPDB
Map dimensions	384, 384, 384	wwPDB
Map angles (°)	90.0, 90.0, 90.0	wwPDB
Pixel spacing (Å)	0.727, 0.727, 0.727	Depositor

## 5 Model quality [i](#)

### 5.1 Standard geometry [i](#)

The Z score for a bond length (or angle) is the number of standard deviations the observed value is removed from the expected value. A bond length (or angle) with  $|Z| > 5$  is considered an outlier worth inspection. RMSZ is the root-mean-square of all Z scores of the bond lengths (or angles).

Mol	Chain	Bond lengths		Bond angles	
		RMSZ	# Z  >5	RMSZ	# Z  >5
1	A	0.53	0/566	0.85	0/758
1	B	0.53	0/566	0.90	0/758
1	C	0.54	0/566	0.86	1/758 (0.1%)
1	D	0.53	0/566	0.91	0/758
1	E	0.53	0/566	0.84	0/758
1	F	0.52	0/566	0.87	0/758
All	All	0.53	0/3396	0.87	1/4548 (0.0%)

There are no bond length outliers.

All (1) bond angle outliers are listed below:

Mol	Chain	Res	Type	Atoms	Z	Observed(°)	Ideal(°)
1	C	349	ARG	NE-CZ-NH2	5.18	122.89	120.30

There are no chirality outliers.

There are no planarity outliers.

### 5.2 Too-close contacts [i](#)

In the following table, the Non-H and H(model) columns list the number of non-hydrogen atoms and hydrogen atoms in the chain respectively. The H(added) column lists the number of hydrogen atoms added and optimized by MolProbity. The Clashes column lists the number of clashes within the asymmetric unit, whereas Symm-Clashes lists symmetry-related clashes.

Mol	Chain	Non-H	H(model)	H(added)	Clashes	Symm-Clashes
1	A	557	580	579	0	0
1	B	557	580	579	0	0
1	C	557	580	579	0	0
1	D	557	580	579	0	0
1	E	557	580	579	0	0
1	F	557	580	579	0	0

*Continued on next page...*



*Continued from previous page...*

Mol	Chain	Non-H	H(model)	H(added)	Clashes	Symm-Clashes
All	All	3342	3480	3474	0	0

The all-atom clashscore is defined as the number of clashes found per 1000 atoms (including hydrogen atoms). The all-atom clashscore for this structure is 0.

There are no clashes within the asymmetric unit.

There are no symmetry-related clashes.

## 5.3 Torsion angles [i](#)

### 5.3.1 Protein backbone [i](#)

In the following table, the Percentiles column shows the percent Ramachandran outliers of the chain as a percentile score with respect to all PDB entries followed by that with respect to all EM entries.

The Analysed column shows the number of residues for which the backbone conformation was analysed, and the total number of residues.

Mol	Chain	Analysed	Favoured	Allowed	Outliers	Percentiles	
1	A	71/382 (19%)	71 (100%)	0	0	100	100
1	B	71/382 (19%)	70 (99%)	1 (1%)	0	100	100
1	C	71/382 (19%)	70 (99%)	1 (1%)	0	100	100
1	D	71/382 (19%)	70 (99%)	1 (1%)	0	100	100
1	E	71/382 (19%)	70 (99%)	1 (1%)	0	100	100
1	F	71/382 (19%)	70 (99%)	1 (1%)	0	100	100
All	All	426/2292 (19%)	421 (99%)	5 (1%)	0	100	100

There are no Ramachandran outliers to report.

### 5.3.2 Protein sidechains [i](#)

In the following table, the Percentiles column shows the percent sidechain outliers of the chain as a percentile score with respect to all PDB entries followed by that with respect to all EM entries.

The Analysed column shows the number of residues for which the sidechain conformation was analysed, and the total number of residues.

Mol	Chain	Analysed	Rotameric	Outliers	Percentiles	
1	A	64/312 (20%)	64 (100%)	0	100	100
1	B	64/312 (20%)	64 (100%)	0	100	100
1	C	64/312 (20%)	64 (100%)	0	100	100
1	D	64/312 (20%)	64 (100%)	0	100	100
1	E	64/312 (20%)	64 (100%)	0	100	100
1	F	64/312 (20%)	64 (100%)	0	100	100
All	All	384/1872 (20%)	384 (100%)	0	100	100

There are no protein residues with a non-rotameric sidechain to report.

Sometimes sidechains can be flipped to improve hydrogen bonding and reduce clashes. All (2) such sidechains are listed below:

Mol	Chain	Res	Type
1	A	362	HIS
1	C	362	HIS

### 5.3.3 RNA [i](#)

There are no RNA molecules in this entry.

## 5.4 Non-standard residues in protein, DNA, RNA chains [i](#)

There are no non-standard protein/DNA/RNA residues in this entry.

## 5.5 Carbohydrates [i](#)

There are no monosaccharides in this entry.

## 5.6 Ligand geometry [i](#)

There are no ligands in this entry.

## 5.7 Other polymers [i](#)

There are no such residues in this entry.

## 5.8 Polymer linkage issues

There are no chain breaks in this entry.

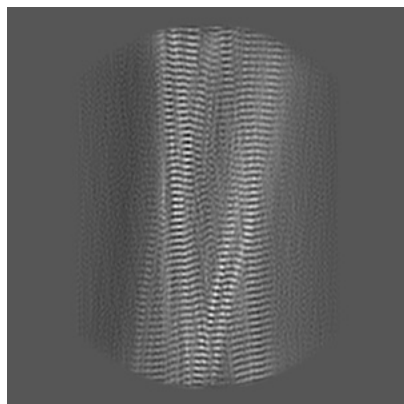
## 6 Map visualisation [i](#)

This section contains visualisations of the EMDB entry EMD-18283. These allow visual inspection of the internal detail of the map and identification of artifacts.

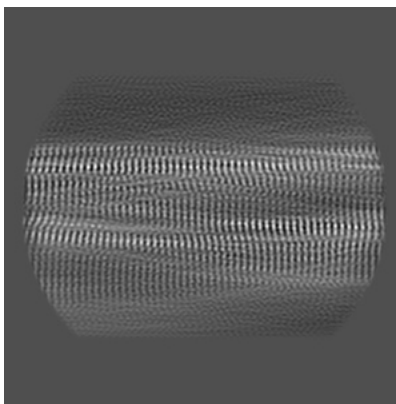
Images derived from a raw map, generated by summing the deposited half-maps, are presented below the corresponding image components of the primary map to allow further visual inspection and comparison with those of the primary map.

### 6.1 Orthogonal projections [i](#)

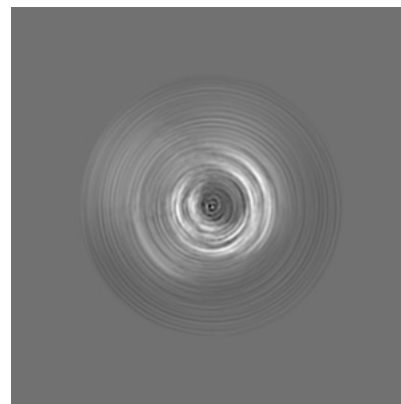
#### 6.1.1 Primary map



X

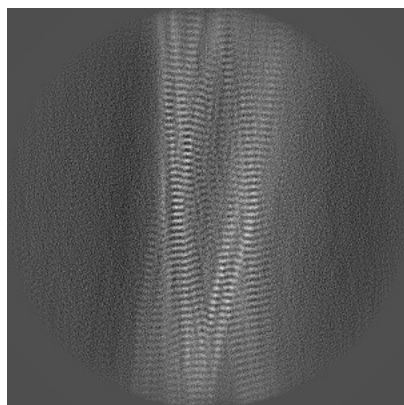


Y

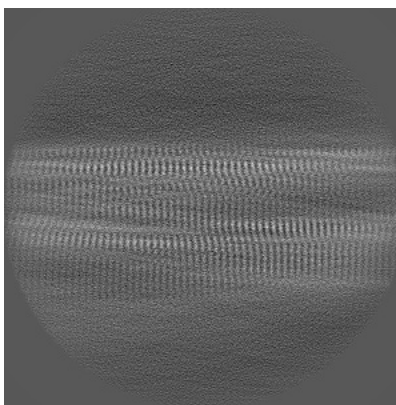


Z

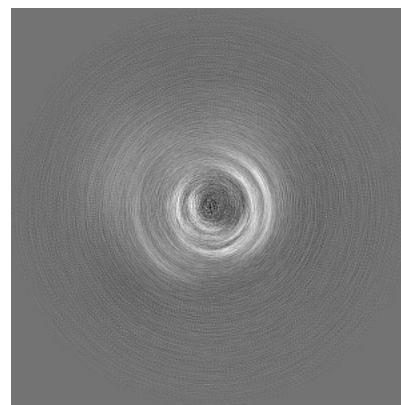
#### 6.1.2 Raw map



X



Y

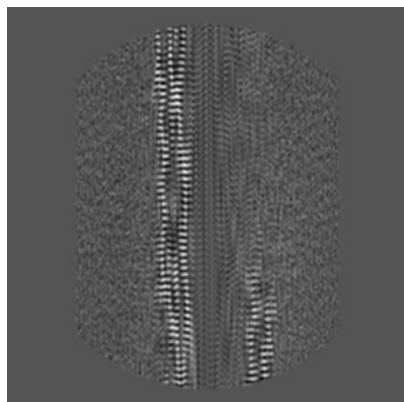


Z

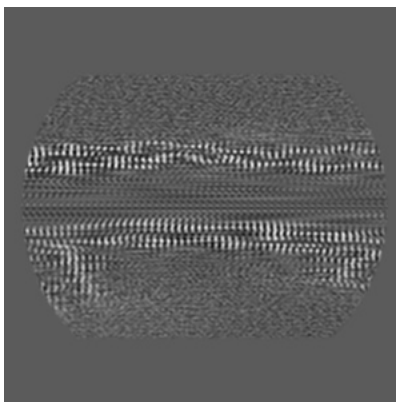
The images above show the map projected in three orthogonal directions.

## 6.2 Central slices [i](#)

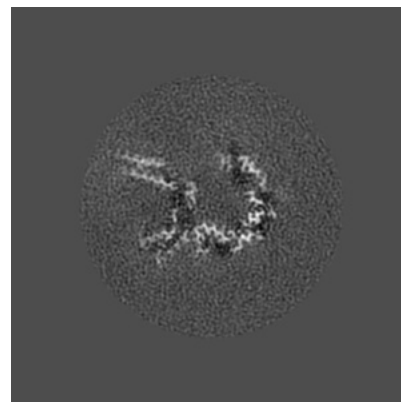
### 6.2.1 Primary map



X Index: 192

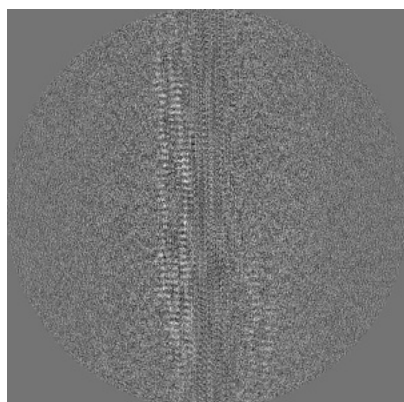


Y Index: 192

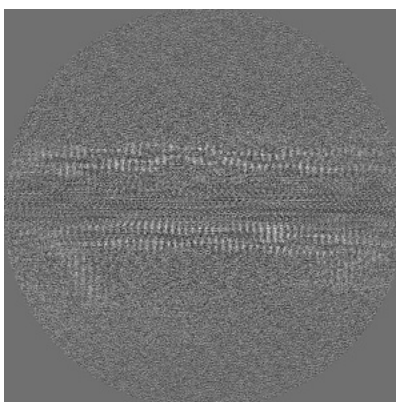


Z Index: 192

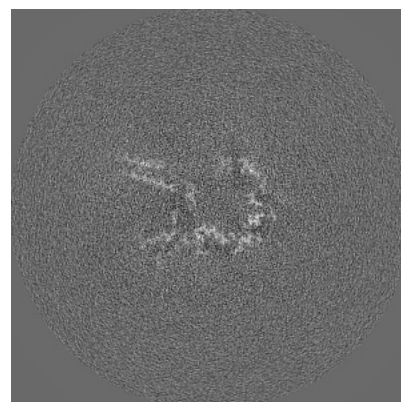
### 6.2.2 Raw map



X Index: 192



Y Index: 192

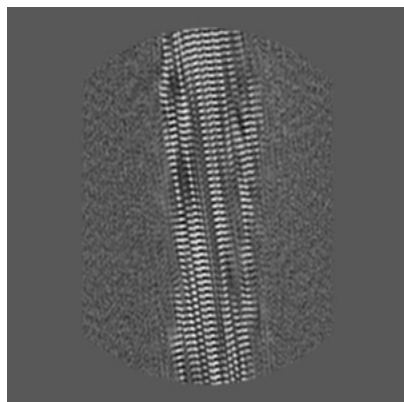


Z Index: 192

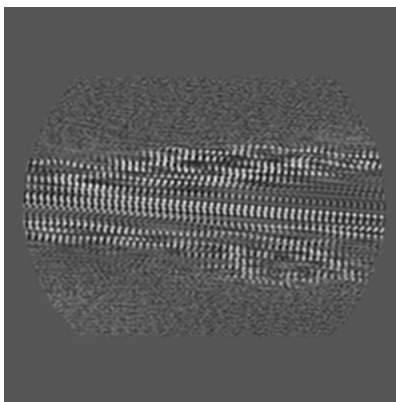
The images above show central slices of the map in three orthogonal directions.

## 6.3 Largest variance slices [i](#)

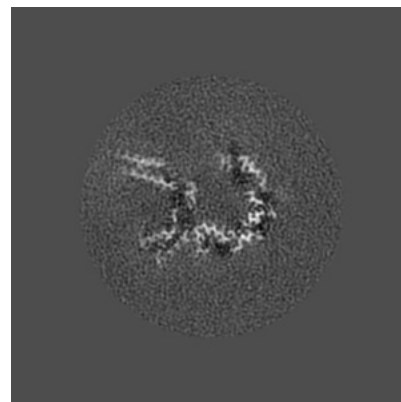
### 6.3.1 Primary map



X Index: 231

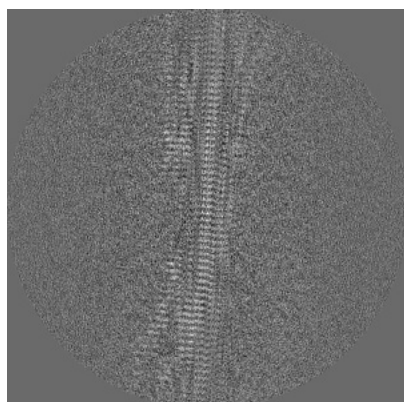


Y Index: 171

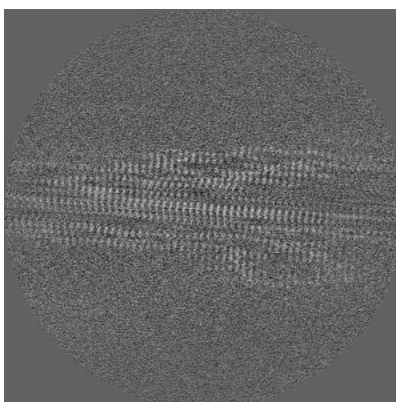


Z Index: 192

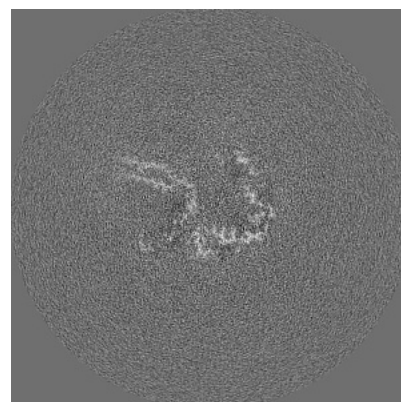
### 6.3.2 Raw map



X Index: 173



Y Index: 171

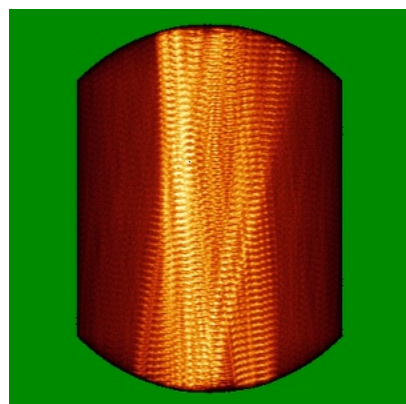


Z Index: 193

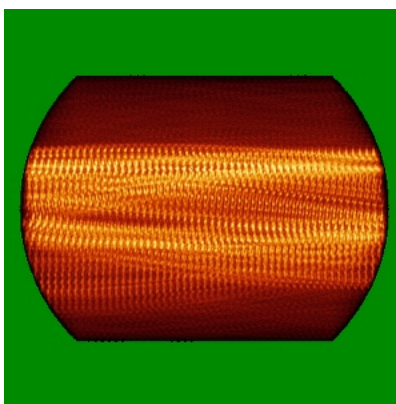
The images above show the largest variance slices of the map in three orthogonal directions.

## 6.4 Orthogonal standard-deviation projections (False-color) [i](#)

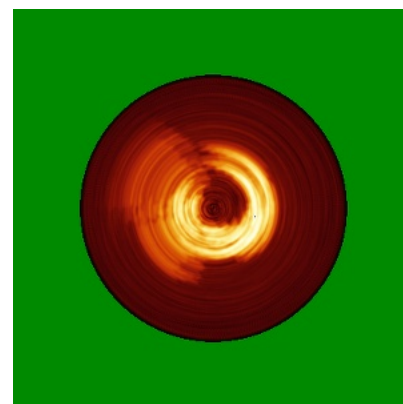
### 6.4.1 Primary map



X

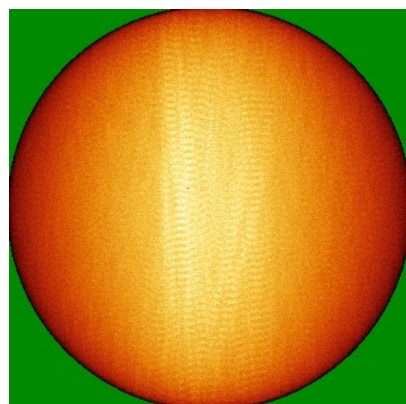


Y

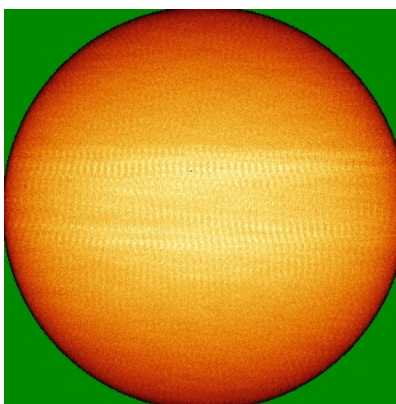


Z

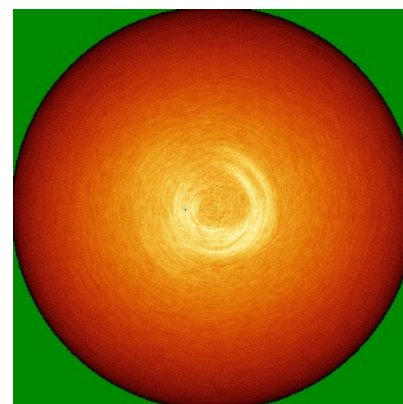
### 6.4.2 Raw map



X



Y



Z

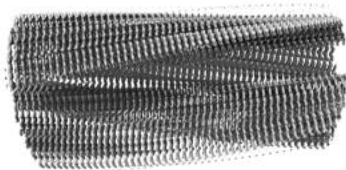
The images above show the map standard deviation projections with false color in three orthogonal directions. Minimum values are shown in green, max in blue, and dark to light orange shades represent small to large values respectively.

## 6.5 Orthogonal surface views [i](#)

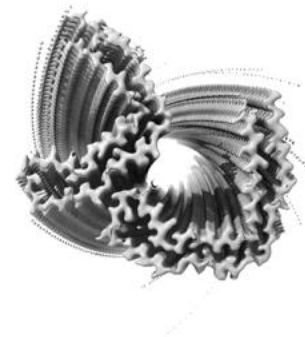
### 6.5.1 Primary map



X



Y



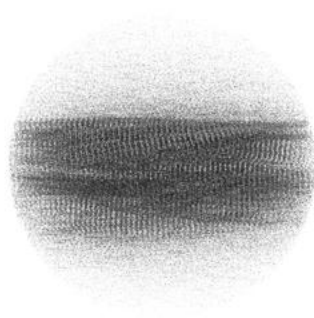
Z

The images above show the 3D surface view of the map at the recommended contour level 0.00674. These images, in conjunction with the slice images, may facilitate assessment of whether an appropriate contour level has been provided.

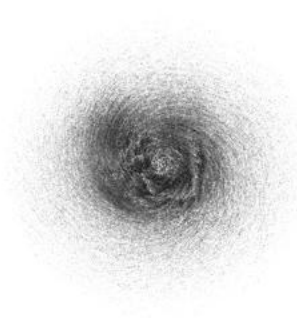
### 6.5.2 Raw map



X



Y



Z

These images show the 3D surface of the raw map. The raw map's contour level was selected so that its surface encloses the same volume as the primary map does at its recommended contour level.

## 6.6 Mask visualisation [i](#)

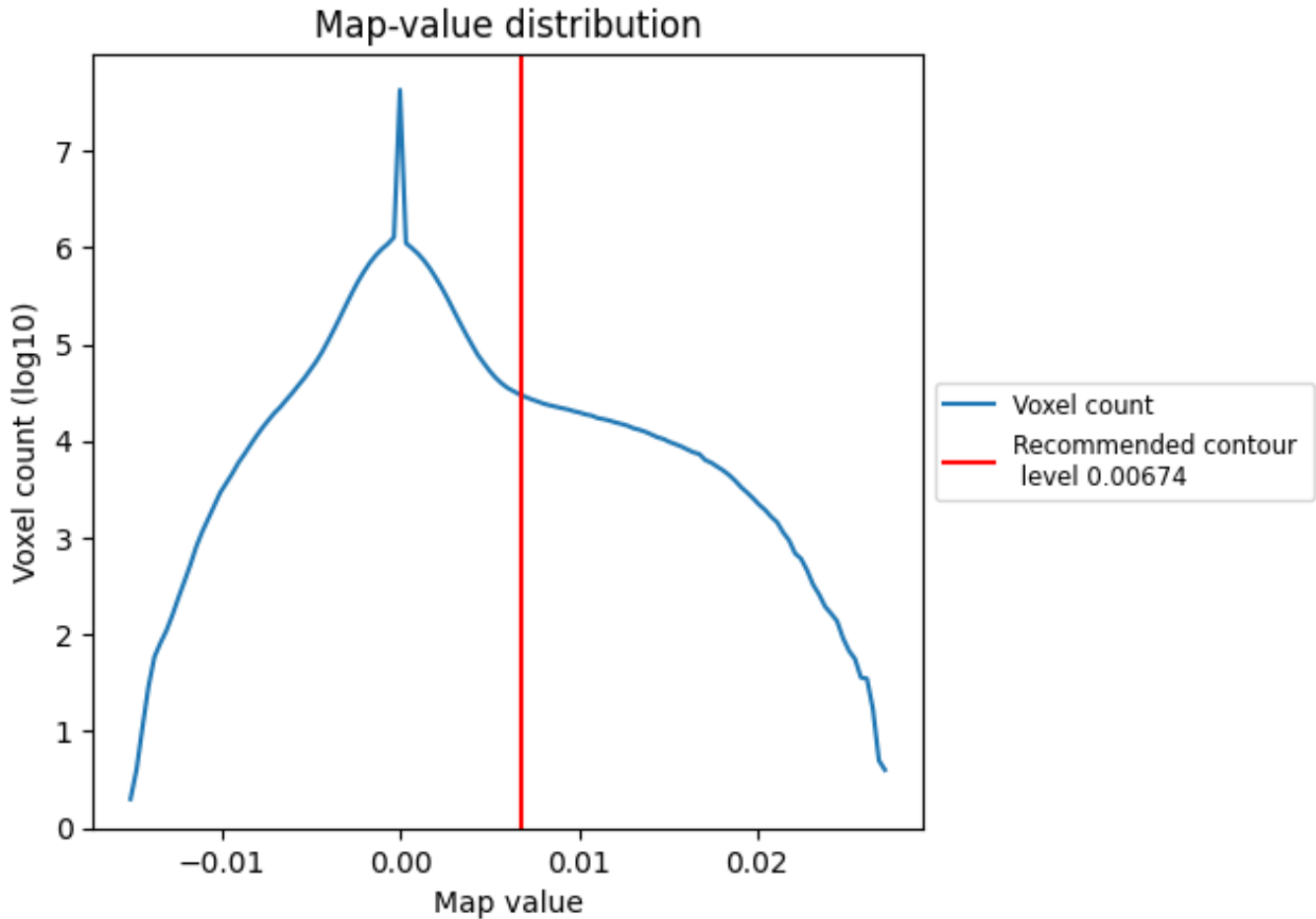
This section was not generated. No masks/segmentation were deposited.



## 7 Map analysis [i](#)

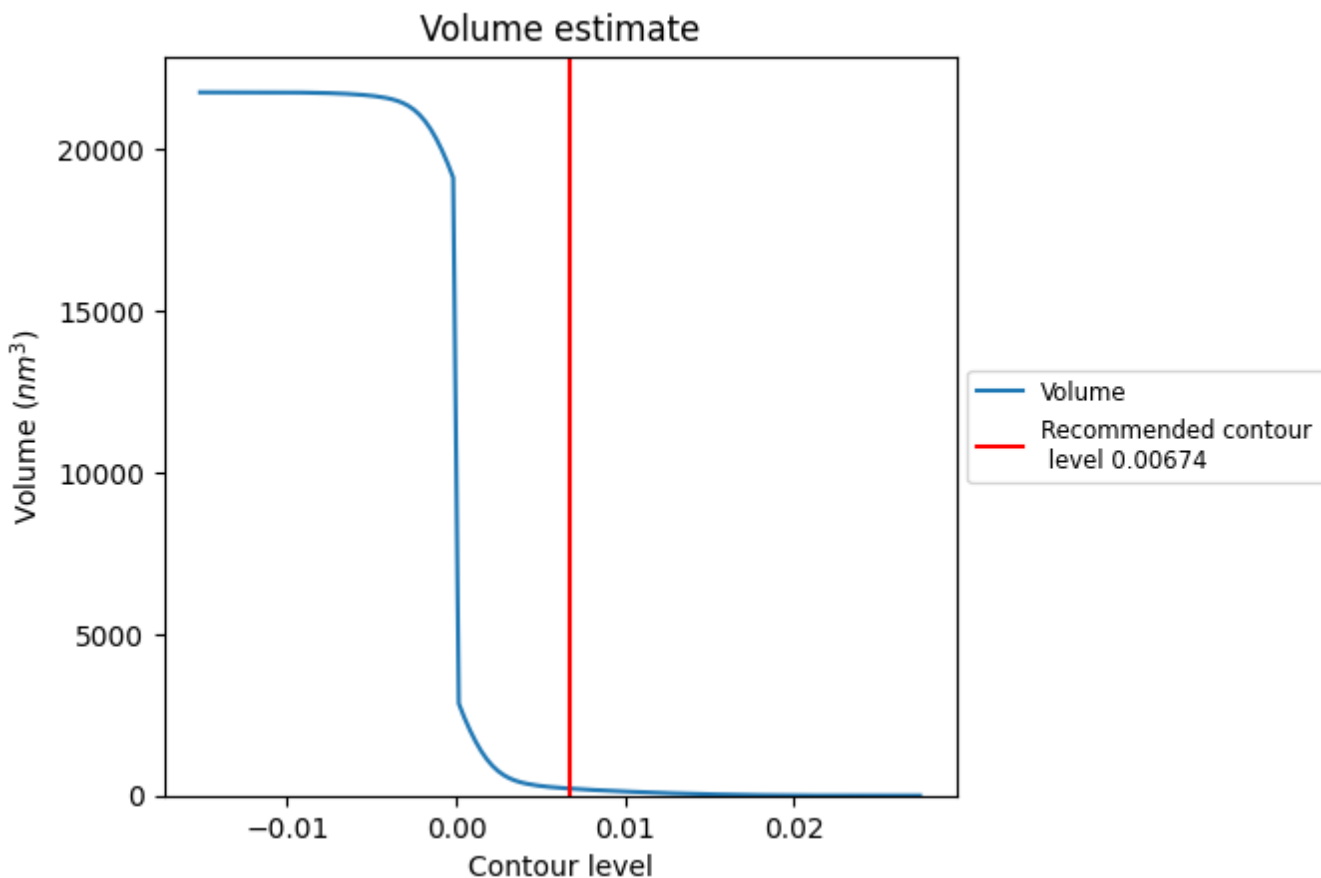
This section contains the results of statistical analysis of the map.

### 7.1 Map-value distribution [i](#)



The map-value distribution is plotted in 128 intervals along the x-axis. The y-axis is logarithmic. A spike in this graph at zero usually indicates that the volume has been masked.

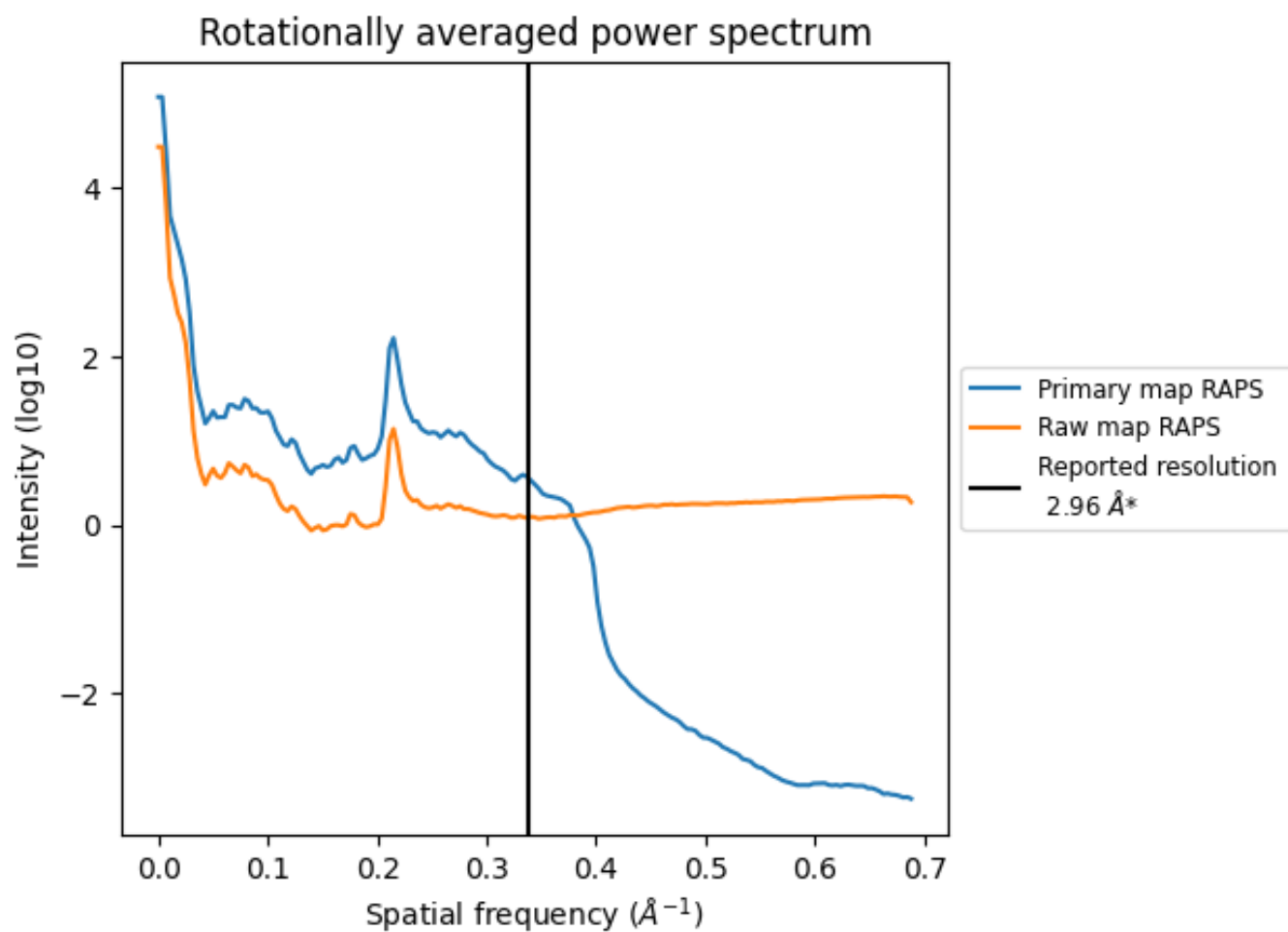
## 7.2 Volume estimate [\(i\)](#)



The volume at the recommended contour level is 217 nm<sup>3</sup>; this corresponds to an approximate mass of 196 kDa.

The volume estimate graph shows how the enclosed volume varies with the contour level. The recommended contour level is shown as a vertical line and the intersection between the line and the curve gives the volume of the enclosed surface at the given level.

### 7.3 Rotationally averaged power spectrum [i](#)

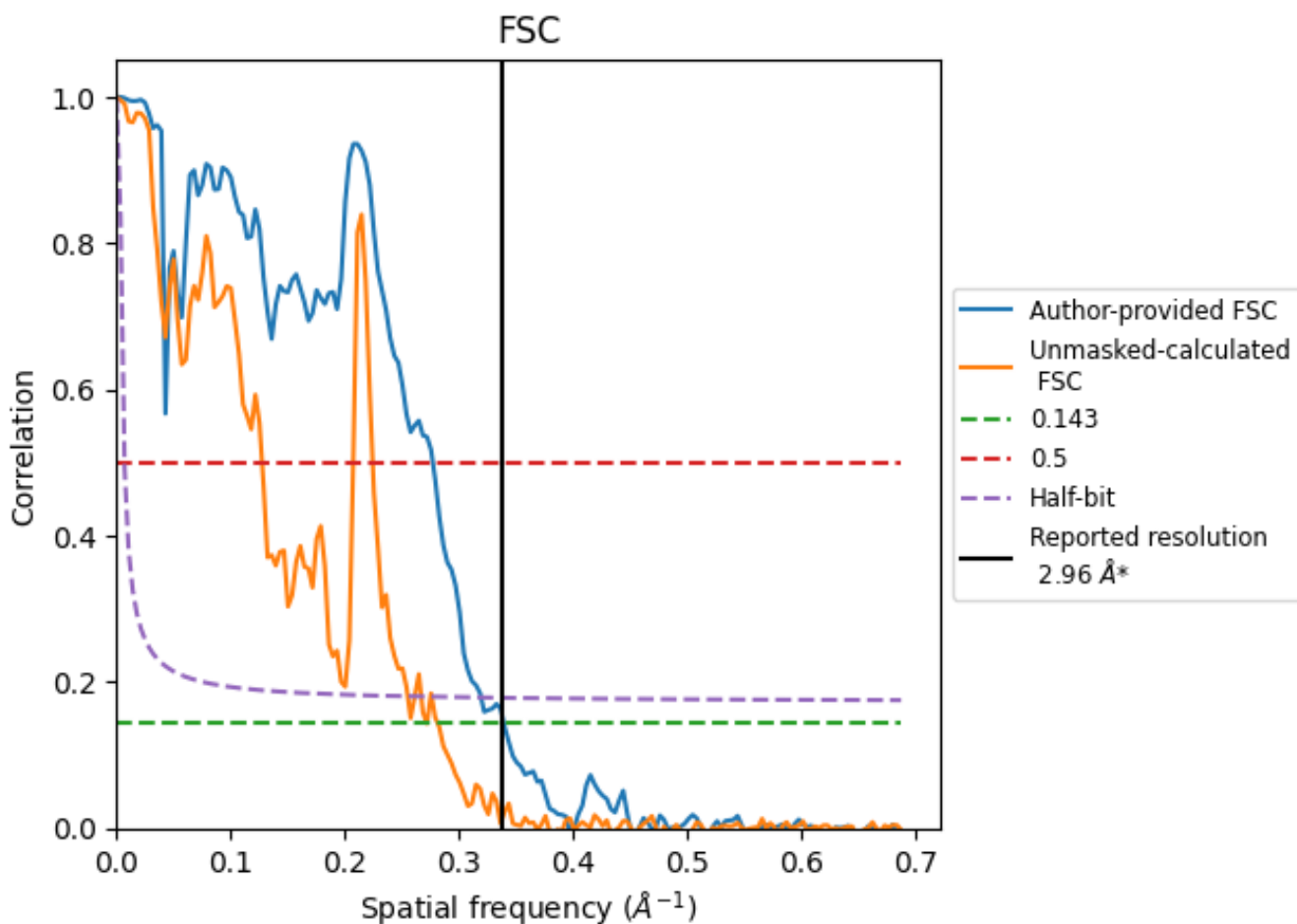


\*Reported resolution corresponds to spatial frequency of 0.338 Å<sup>-1</sup>

## 8 Fourier-Shell correlation [i](#)

Fourier-Shell Correlation (FSC) is the most commonly used method to estimate the resolution of single-particle and subtomogram-averaged maps. The shape of the curve depends on the imposed symmetry, mask and whether or not the two 3D reconstructions used were processed from a common reference. The reported resolution is shown as a black line. A curve is displayed for the half-bit criterion in addition to lines showing the 0.143 gold standard cut-off and 0.5 cut-off.

### 8.1 FSC [i](#)



\*Reported resolution corresponds to spatial frequency of 0.338 Å<sup>-1</sup>

## 8.2 Resolution estimates [i](#)

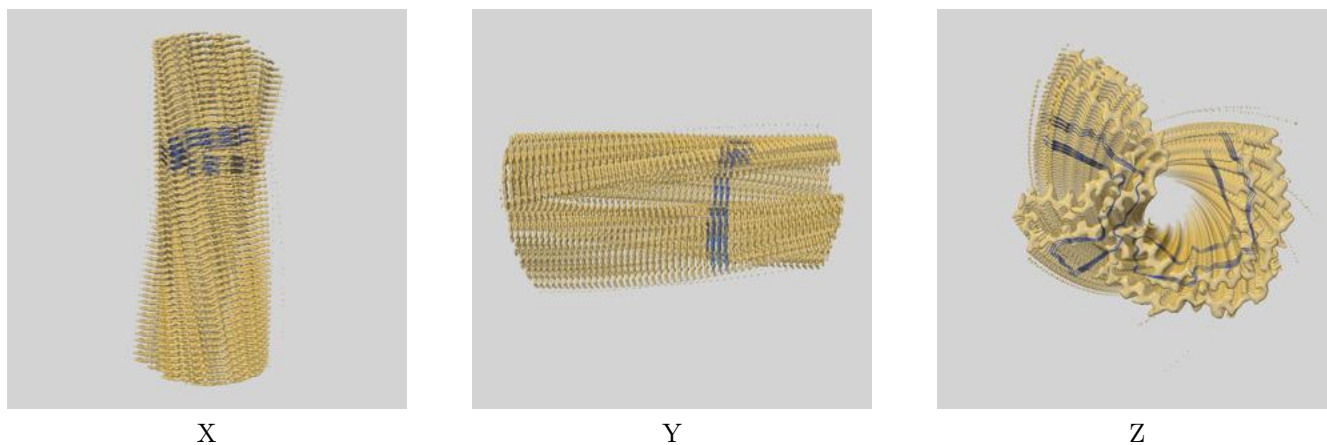
Resolution estimate (Å)	Estimation criterion (FSC cut-off)		
	0.143	0.5	Half-bit
Reported by author	2.96	-	-
Author-provided FSC curve	2.94	3.61	3.13
Unmasked-calculated*	3.68	7.84	3.92

\*Resolution estimate based on FSC curve calculated by comparison of deposited half-maps. The value from deposited half-maps intersecting FSC 0.143 CUT-OFF 3.68 differs from the reported value 2.96 by more than 10 %

## 9 Map-model fit [i](#)

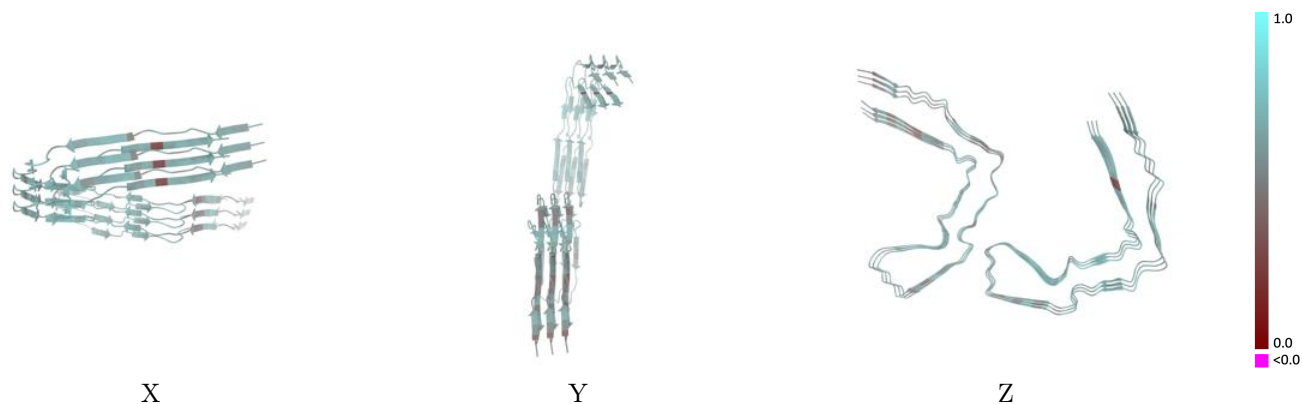
This section contains information regarding the fit between EMDB map EMD-18283 and PDB model 8Q9J. Per-residue inclusion information can be found in section 3 on page 4.

### 9.1 Map-model overlay [i](#)



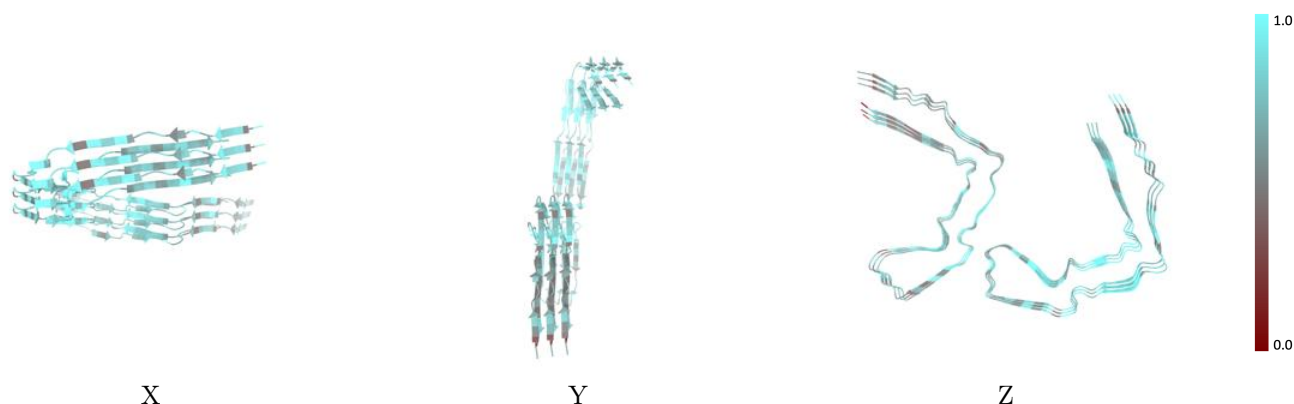
The images above show the 3D surface view of the map at the recommended contour level 0.00674 at 50% transparency in yellow overlaid with a ribbon representation of the model coloured in blue. These images allow for the visual assessment of the quality of fit between the atomic model and the map.

## 9.2 Q-score mapped to coordinate model [i](#)



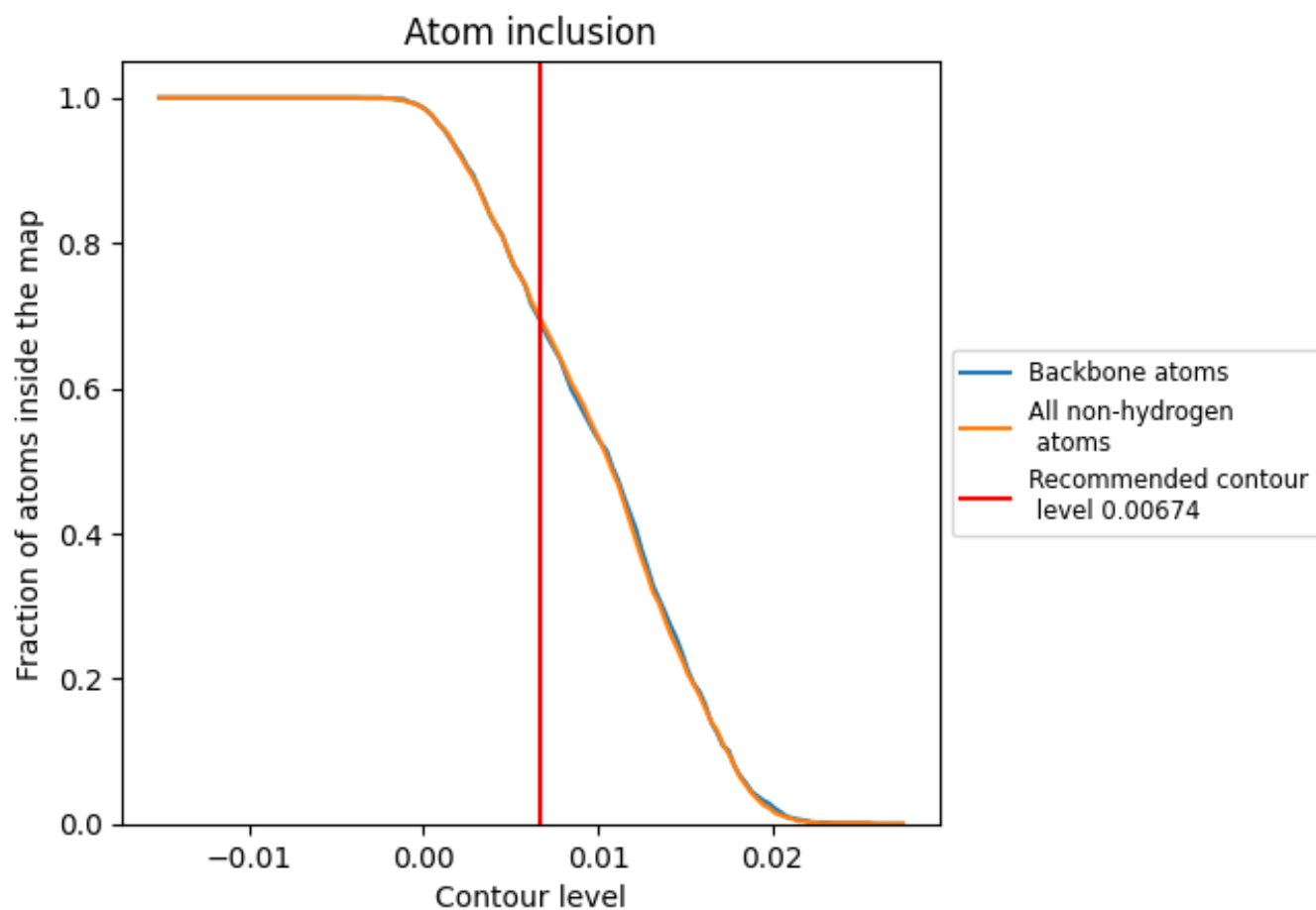
The images above show the model with each residue coloured according to its Q-score. This shows their resolvability in the map with higher Q-score values reflecting better resolvability. Please note: Q-score is calculating the resolvability of atoms, and thus high values are only expected at resolutions at which atoms can be resolved. Low Q-score values may therefore be expected for many entries.

## 9.3 Atom inclusion mapped to coordinate model [i](#)



The images above show the model with each residue coloured according to its atom inclusion. This shows to what extent they are inside the map at the recommended contour level (0.00674).

## 9.4 Atom inclusion [i](#)

















At the recommended contour level, 69% of all backbone atoms, 69% of all non-hydrogen atoms, are inside the map.



## 9.5 Map-model fit summary

The table lists the average atom inclusion at the recommended contour level (0.00674) and Q-score for the entire model and for each chain.

Chain	Atom inclusion	Q-score
All	 0.6940	 0.5740
A	 0.6500	 0.5610
B	 0.7510	 0.5920
C	 0.6500	 0.5600
D	 0.7540	 0.5870
E	 0.6530	 0.5550
F	 0.7380	 0.5890

