



Full wwPDB X-ray Structure Validation Report ⓘ

Apr 2, 2024 – 08:05 PM EDT

PDB ID : 3Q8D
Title : E. coli RecO complex with SSB C-terminus
Authors : Koroleva, O.; Ryzhikov, M.; Korolev, S.
Deposited on : 2011-01-06
Resolution : 2.30 Å(reported)

This is a Full wwPDB X-ray Structure Validation Report for a publicly released PDB entry.

We welcome your comments at validation@mail.wwpdb.org

A user guide is available at

<https://www.wwpdb.org/validation/2017/XrayValidationReportHelp>

with specific help available everywhere you see the ⓘ symbol.

The types of validation reports are described at

<http://www.wwpdb.org/validation/2017/FAQs#types>.

The following versions of software and data (see [references ⓘ](#)) were used in the production of this report:

MolProbity : 4.02b-467
Mogul : 1.8.5 (274361), CSD as541be (2020)
Xtriage (Phenix) : 1.13
EDS : 2.36.1
buster-report : 1.1.7 (2018)
Percentile statistics : 20191225.v01 (using entries in the PDB archive December 25th 2019)
Refmac : 5.8.0158
CCP4 : 7.0.044 (Gargrove)
Ideal geometry (proteins) : Engh & Huber (2001)
Ideal geometry (DNA, RNA) : Parkinson et al. (1996)
Validation Pipeline (wwPDB-VP) : 2.36.1

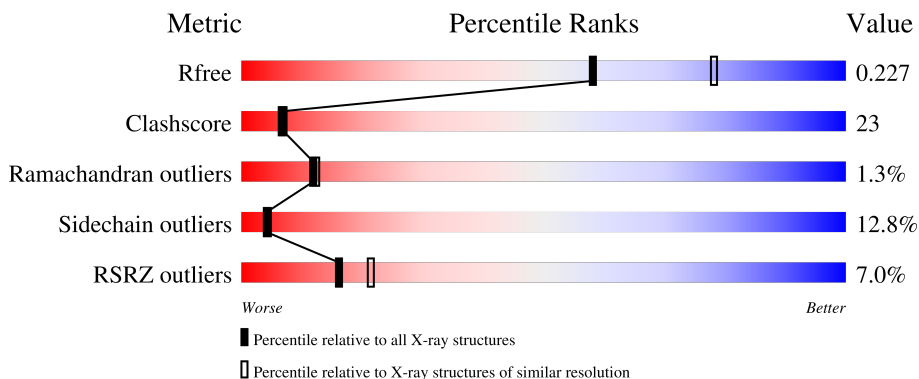
1 Overall quality at a glance

The following experimental techniques were used to determine the structure:

X-RAY DIFFRACTION

The reported resolution of this entry is 2.30 Å.

Percentile scores (ranging between 0-100) for global validation metrics of the entry are shown in the following graphic. The table shows the number of entries on which the scores are based.



Metric	Whole archive (#Entries)	Similar resolution (#Entries, resolution range(Å))
R_{free}	130704	5042 (2.30-2.30)
Clashscore	141614	5643 (2.30-2.30)
Ramachandran outliers	138981	5575 (2.30-2.30)
Sidechain outliers	138945	5575 (2.30-2.30)
RSRZ outliers	127900	4938 (2.30-2.30)

The table below summarises the geometric issues observed across the polymeric chains and their fit to the electron density. The red, orange, yellow and green segments of the lower bar indicate the fraction of residues that contain outliers for ≥ 3 , 2, 1 and 0 types of geometric quality criteria respectively. A grey segment represents the fraction of residues that are not modelled. The numeric value for each fraction is indicated below the corresponding segment, with a dot representing fractions $\leq 5\%$. The upper red bar (where present) indicates the fraction of residues that have poor fit to the electron density. The numeric value is given above the bar.

Mol	Chain	Length	Quality of chain
1	A	242	
1	B	242	
2	E	10	
2	F	10	

The following table lists non-polymeric compounds, carbohydrate monomers and non-standard

residues in protein, DNA, RNA chains that are outliers for geometric or electron-density-fit criteria:

Mol	Type	Chain	Res	Chirality	Geometry	Clashes	Electron density
4	GOL	A	800	-	-	X	-

2 Entry composition

There are 6 unique types of molecules in this entry. The entry contains 3988 atoms, of which 0 are hydrogens and 0 are deuteriums.

In the tables below, the ZeroOcc column contains the number of atoms modelled with zero occupancy, the AltConf column contains the number of residues with at least one atom in alternate conformation and the Trace column contains the number of residues modelled with at most 2 atoms.

- Molecule 1 is a protein called DNA repair protein recO.

Mol	Chain	Residues	Atoms					ZeroOcc	AltConf	Trace
			Total	C	N	O	S			
1	A	231	Total	C	N	O	S	0	0	0
			1828	1170	326	326	6			
1	B	232	Total	C	N	O	S	0	0	0
			1843	1180	328	329	6			

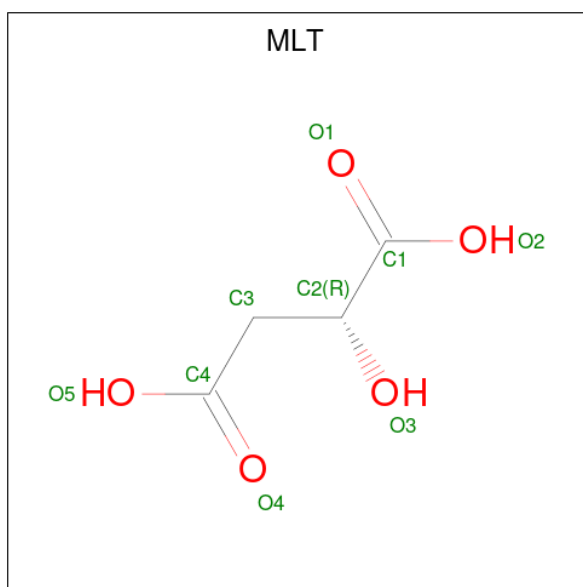
- Molecule 2 is a protein called Single-stranded DNA-binding protein.

Mol	Chain	Residues	Atoms				ZeroOcc	AltConf	Trace
			Total	C	N	O			
2	E	3	Total	C	N	O	0	0	0
			27	20	3	4			
2	F	3	Total	C	N	O	0	0	0
			27	20	3	4			

There are 2 discrepancies between the modelled and reference sequences:

Chain	Residue	Modelled	Actual	Comment	Reference
E	0	TYR	-	expression tag	UNP D5D6S3
F	0	TYR	-	expression tag	UNP D5D6S3

- Molecule 3 is D-MALATE (three-letter code: MLT) (formula: C₄H₆O₅).



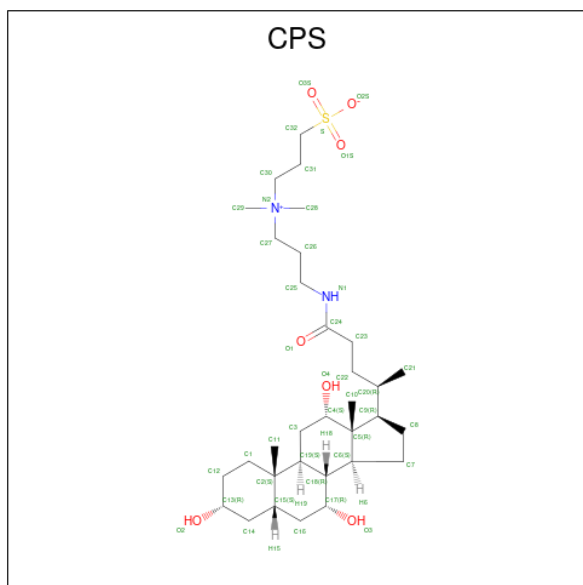
Mol	Chain	Residues	Atoms			ZeroOcc	AltConf
3	A	1	Total	C	O	0	0
			9	4	5		

- Molecule 4 is GLYCEROL (three-letter code: GOL) (formula: $C_3H_8O_3$).



Mol	Chain	Residues	Atoms			ZeroOcc	AltConf
4	A	1	Total	C	O	0	0
			6	3	3		

- Molecule 5 is 3-[(3-CHOLAMIDOPROPYL)DIMETHYLAMMONIO]-1-PROPANESULFO NATE (three-letter code: CPS) (formula: $C_{32}H_{58}N_2O_7S$).



Mol	Chain	Residues	Atoms					ZeroOcc	AltConf
			Total	C	N	O	S		
5	B	1	42	32	2	7	1	0	0

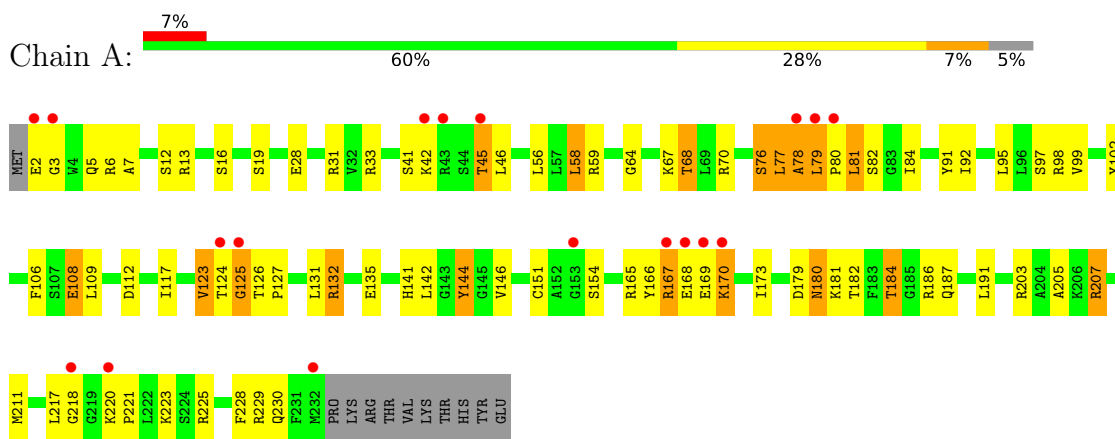
- Molecule 6 is water.

Mol	Chain	Residues	Atoms		ZeroOcc	AltConf
6	A	107	Total	O	0	0
			107	107		
6	B	96	Total	O	0	0
			96	96		
6	E	2	Total	O	0	0
			2	2		
6	F	1	Total	O	0	0
			1	1		

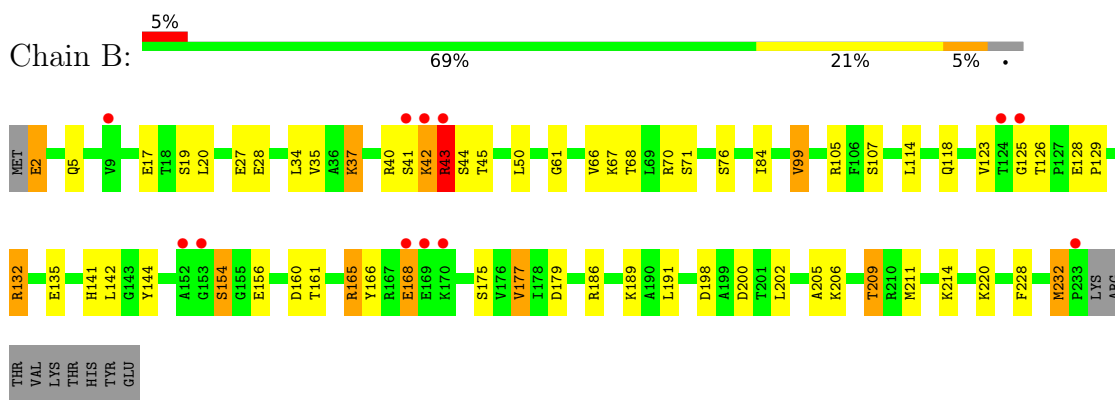
3 Residue-property plots [i](#)

These plots are drawn for all protein, RNA, DNA and oligosaccharide chains in the entry. The first graphic for a chain summarises the proportions of the various outlier classes displayed in the second graphic. The second graphic shows the sequence view annotated by issues in geometry and electron density. Residues are color-coded according to the number of geometric quality criteria for which they contain at least one outlier: green = 0, yellow = 1, orange = 2 and red = 3 or more. A red dot above a residue indicates a poor fit to the electron density ($RSRZ > 2$). Stretches of 2 or more consecutive residues without any outlier are shown as a green connector. Residues present in the sample, but not in the model, are shown in grey.

- Molecule 1: DNA repair protein recO



- Molecule 1: DNA repair protein recO



- Molecule 2: Single-stranded DNA-binding protein



- Molecule 2: Single-stranded DNA-binding protein



TYR	MET	ASP	PHE	ASP	ASP	ASP	I7	F8	F9
-----	-----	-----	-----	-----	-----	-----	----	----	----

4 Data and refinement statistics

Property	Value	Source
Space group	I 2 2 2	Depositor
Cell constants a, b, c, α , β , γ	100.20Å 118.57Å 145.12Å 90.00° 90.00° 90.00°	Depositor
Resolution (Å)	40.00 – 2.30 38.27 – 2.30	Depositor EDS
% Data completeness (in resolution range)	93.9 (40.00-2.30) 92.5 (38.27-2.30)	Depositor EDS
R_{merge}	0.06	Depositor
R_{sym}	(Not available)	Depositor
$\langle I/\sigma(I) \rangle$ ¹	2.17 (at 2.29Å)	Xtrriage
Refinement program	REFMAC 5.5.0109	Depositor
R, R_{free}	0.195 , 0.234 0.189 , 0.227	Depositor DCC
R_{free} test set	1867 reflections (5.21%)	wwPDB-VP
Wilson B-factor (Å ²)	43.6	Xtrriage
Anisotropy	0.170	Xtrriage
Bulk solvent k_{sol} (e/Å ³), B_{sol} (Å ²)	0.36 , 55.5	EDS
L-test for twinning ²	$\langle L \rangle = 0.48$, $\langle L^2 \rangle = 0.32$	Xtrriage
Estimated twinning fraction	No twinning to report.	Xtrriage
F_o, F_c correlation	0.96	EDS
Total number of atoms	3988	wwPDB-VP
Average B, all atoms (Å ²)	47.0	wwPDB-VP

Xtrriage's analysis on translational NCS is as follows: *The largest off-origin peak in the Patterson function is 4.15% of the height of the origin peak. No significant pseudotranslation is detected.*

¹Intensities estimated from amplitudes.

²Theoretical values of $\langle |L| \rangle$, $\langle L^2 \rangle$ for acentric reflections are 0.5, 0.333 respectively for untwinned datasets, and 0.375, 0.2 for perfectly twinned datasets.

5 Model quality [i](#)

5.1 Standard geometry [i](#)

Bond lengths and bond angles in the following residue types are not validated in this section: CPS, MLT, GOL

The Z score for a bond length (or angle) is the number of standard deviations the observed value is removed from the expected value. A bond length (or angle) with $|Z| > 5$ is considered an outlier worth inspection. RMSZ is the root-mean-square of all Z scores of the bond lengths (or angles).

Mol	Chain	Bond lengths		Bond angles	
		RMSZ	# Z >5	RMSZ	# Z >5
1	A	0.35	0/1868	0.51	0/2520
1	B	0.34	0/1884	0.49	0/2541
2	E	0.50	0/28	0.49	0/36
2	F	0.52	0/28	0.50	0/36
All	All	0.35	0/3808	0.50	0/5133

Chiral center outliers are detected by calculating the chiral volume of a chiral center and verifying if the center is modelled as a planar moiety or with the opposite hand. A planarity outlier is detected by checking planarity of atoms in a peptide group, atoms in a mainchain group or atoms of a sidechain that are expected to be planar.

Mol	Chain	#Chirality outliers	#Planarity outliers
1	A	0	4
2	E	0	1
2	F	0	1
All	All	0	6

There are no bond length outliers.

There are no bond angle outliers.

There are no chirality outliers.

All (6) planarity outliers are listed below:

Mol	Chain	Res	Type	Group
1	A	123	VAL	Peptide
1	A	207	ARG	Sidechain
1	A	217	LEU	Peptide
1	A	78	ALA	Peptide
2	E	8	PRO	Peptide
2	F	8	PRO	Peptide

5.2 Too-close contacts [i](#)

In the following table, the Non-H and H(model) columns list the number of non-hydrogen atoms and hydrogen atoms in the chain respectively. The H(added) column lists the number of hydrogen atoms added and optimized by MolProbity. The Clashes column lists the number of clashes within the asymmetric unit, whereas Symm-Clashes lists symmetry-related clashes.

Mol	Chain	Non-H	H(model)	H(added)	Clashes	Symm-Clashes
1	A	1828	0	1846	86	0
1	B	1843	0	1868	60	0
2	E	27	0	26	12	0
2	F	27	0	26	17	0
3	A	9	0	4	0	0
4	A	6	0	8	7	0
5	B	42	0	58	1	0
6	A	107	0	0	16	0
6	B	96	0	0	11	0
6	E	2	0	0	4	0
6	F	1	0	0	1	0
All	All	3988	0	3836	175	0

The all-atom clashscore is defined as the number of clashes found per 1000 atoms (including hydrogen atoms). The all-atom clashscore for this structure is 23.

All (175) close contacts within the same asymmetric unit are listed below, sorted by their clash magnitude.

Atom-1	Atom-2	Interatomic distance (Å)	Clash overlap (Å)
2:F:8:PRO:HG2	2:F:9:PHE:CB	1.68	1.21
2:F:8:PRO:CG	2:F:9:PHE:HB3	1.70	1.21
1:B:2:GLU:CB	6:B:311:HOH:O	1.92	1.15
1:B:2:GLU:HB3	6:B:311:HOH:O	1.43	1.13
1:A:45:THR:HG22	6:A:329:HOH:O	1.50	1.10
1:A:80:PRO:O	1:A:81:LEU:HD13	1.62	0.99
2:F:9:PHE:C	2:F:9:PHE:CD1	2.31	0.97
2:F:8:PRO:HG2	2:F:9:PHE:HB3	0.95	0.95
2:F:9:PHE:C	2:F:9:PHE:HD1	1.70	0.94
2:E:9:PHE:HB2	6:E:188:HOH:O	1.69	0.92
1:A:45:THR:HA	6:A:256:HOH:O	1.67	0.91
1:A:80:PRO:O	1:A:81:LEU:CD1	2.20	0.90
2:E:9:PHE:CD1	2:E:9:PHE:O	2.26	0.89
1:B:135:GLU:OE1	1:B:209:THR:HG21	1.72	0.89
1:A:2:GLU:CB	6:A:322:HOH:O	2.20	0.88
1:B:41:SER:N	1:B:42:LYS:HA	1.87	0.88

Continued on next page...

Continued from previous page...

Atom-1	Atom-2	Interatomic distance (Å)	Clash overlap (Å)
1:A:184:THR:HG22	1:A:187:GLN:H	1.40	0.87
1:A:167:ARG:HB2	1:A:170:LYS:HB3	1.61	0.80
2:F:9:PHE:CD1	2:F:9:PHE:OXT	2.34	0.79
1:A:108:GLU:H	1:A:108:GLU:CD	1.90	0.75
1:A:112:ASP:OD2	1:A:141:HIS:HE1	1.69	0.75
1:A:7:ALA:HB3	1:A:58:LEU:HD22	1.69	0.74
1:A:78:ALA:HB1	1:A:80:PRO:HD3	1.68	0.74
1:A:167:ARG:HE	1:A:173:ILE:HG12	1.53	0.74
1:A:80:PRO:O	1:A:81:LEU:HB2	1.86	0.73
1:B:42:LYS:NZ	1:B:42:LYS:HB3	2.04	0.73
1:B:99:VAL:HG13	1:B:142:LEU:HD21	1.72	0.71
2:F:8:PRO:CG	2:F:9:PHE:CB	2.49	0.71
1:B:42:LYS:HB3	1:B:42:LYS:HZ2	1.55	0.71
1:A:124:THR:O	1:A:125:GLY:O	2.07	0.71
1:A:230:GLN:O	1:A:230:GLN:HG3	1.89	0.71
1:B:168:GLU:HB2	6:B:314:HOH:O	1.91	0.71
1:A:166:TYR:HD2	1:A:211:MET:CE	2.03	0.71
1:A:59:ARG:CZ	6:A:304:HOH:O	2.39	0.70
1:A:80:PRO:O	1:A:81:LEU:CB	2.39	0.69
1:B:154:SER:OG	1:B:156:GLU:HB2	1.92	0.69
1:B:41:SER:HB2	1:B:42:LYS:O	1.93	0.68
2:E:9:PHE:CD1	6:E:188:HOH:O	2.47	0.67
1:A:166:TYR:CD2	1:A:211:MET:CE	2.77	0.67
1:A:16:SER:OG	4:A:800:GOL:O1	2.13	0.67
1:A:68:THR:HG22	6:A:283:HOH:O	1.94	0.67
1:B:2:GLU:HB2	6:B:311:HOH:O	1.70	0.67
1:A:19:SER:HB2	4:A:800:GOL:H11	1.77	0.66
2:E:8:PRO:HG2	2:E:9:PHE:H	1.60	0.66
1:A:151:CYS:SG	6:A:330:HOH:O	2.41	0.66
1:A:223:LYS:CB	6:A:311:HOH:O	2.44	0.65
1:A:99:VAL:HG13	1:A:142:LEU:HD21	1.78	0.65
1:A:16:SER:HG	4:A:800:GOL:HO1	1.44	0.65
1:A:182:THR:O	1:A:207:ARG:NH2	2.30	0.65
1:B:166:TYR:CD2	1:B:211:MET:HE3	2.32	0.64
1:B:209:THR:HG22	6:B:263:HOH:O	1.97	0.64
1:A:64:GLY:N	6:A:323:HOH:O	2.14	0.64
1:B:228:PHE:O	1:B:232:MET:HB2	1.99	0.63
1:A:132:ARG:HD3	1:A:135:GLU:OE1	1.98	0.63
1:A:166:TYR:HD2	1:A:211:MET:HE3	1.63	0.63
1:B:5:GLN:HE21	1:B:28:GLU:HB2	1.64	0.62
2:F:8:PRO:HG2	2:F:9:PHE:HB2	1.76	0.62

Continued on next page...

Continued from previous page...

Atom-1	Atom-2	Interatomic distance (Å)	Clash overlap (Å)
1:B:191:LEU:HD21	1:B:205:ALA:HA	1.80	0.62
1:B:84:ILE:HB	1:B:232:MET:HE1	1.82	0.62
2:F:8:PRO:CD	2:F:9:PHE:HB3	2.28	0.61
1:A:76:SER:HB2	1:A:78:ALA:HB2	1.81	0.61
2:E:7:ILE:N	6:E:192:HOH:O	2.33	0.60
1:A:45:THR:CA	6:A:256:HOH:O	2.37	0.60
2:E:9:PHE:O	2:E:9:PHE:HD1	1.83	0.60
1:A:95:LEU:O	1:A:99:VAL:HB	2.02	0.60
1:B:42:LYS:HG3	1:B:44:SER:H	1.67	0.60
1:A:168:GLU:O	1:A:169:GLU:HB2	2.01	0.59
1:B:84:ILE:HB	1:B:232:MET:CE	2.32	0.59
1:A:7:ALA:CB	1:A:58:LEU:HD22	2.33	0.59
1:B:175:SER:OG	1:B:177:VAL:HG13	2.03	0.59
1:A:59:ARG:NE	6:A:304:HOH:O	2.35	0.59
1:A:77:LEU:HB2	6:A:327:HOH:O	2.03	0.58
1:A:79:LEU:C	1:A:79:LEU:HD12	2.23	0.58
2:E:7:ILE:N	2:E:8:PRO:CD	2.66	0.58
1:B:35:VAL:HG23	1:B:66:VAL:CG1	2.33	0.58
1:A:180:ASN:HD22	1:A:180:ASN:N	2.02	0.57
1:A:16:SER:OG	4:A:800:GOL:C1	2.53	0.57
1:B:209:THR:CG2	6:B:263:HOH:O	2.52	0.57
1:B:42:LYS:HB2	1:B:44:SER:HB2	1.87	0.57
2:E:9:PHE:HD1	6:E:188:HOH:O	1.87	0.56
1:B:41:SER:HB2	1:B:42:LYS:C	2.26	0.56
1:A:167:ARG:HB2	1:A:170:LYS:CB	2.35	0.55
1:A:98:ARG:NH2	1:A:221:PRO:O	2.40	0.55
1:A:167:ARG:NE	1:A:173:ILE:HG12	2.21	0.55
6:A:289:HOH:O	1:B:161:THR:HG23	2.05	0.55
1:B:165:ARG:NH1	1:B:179:ASP:OD2	2.40	0.54
1:A:184:THR:HG22	1:A:187:GLN:N	2.18	0.54
1:A:112:ASP:OD2	1:A:141:HIS:CE1	2.56	0.54
1:A:2:GLU:CB	1:A:3:GLY:HA3	2.38	0.54
1:A:2:GLU:CB	1:A:3:GLY:CA	2.86	0.54
2:F:9:PHE:HD1	2:F:9:PHE:O	1.90	0.53
1:A:165:ARG:NH1	1:A:179:ASP:OD2	2.38	0.53
1:B:198:ASP:OD1	1:B:200:ASP:HB3	2.09	0.53
1:B:160:ASP:OD1	1:B:189:LYS:HE3	2.09	0.52
1:A:78:ALA:CB	1:A:80:PRO:HD3	2.38	0.52
1:B:2:GLU:O	1:B:2:GLU:OE1	2.26	0.52
1:B:42:LYS:HD3	1:B:44:SER:O	2.09	0.52
1:A:5:GLN:NE2	1:A:28:GLU:H	2.08	0.52

Continued on next page...

Continued from previous page...

Atom-1	Atom-2	Interatomic distance (Å)	Clash overlap (Å)
1:A:16:SER:CB	4:A:800:GOL:H12	2.41	0.51
1:A:184:THR:HG23	1:A:186:ARG:H	1.76	0.51
1:A:167:ARG:HH21	1:A:173:ILE:HD11	1.76	0.50
1:B:99:VAL:HG11	1:B:142:LEU:HD11	1.92	0.50
2:F:8:PRO:HB2	2:F:9:PHE:CA	2.41	0.50
1:B:35:VAL:HG23	1:B:66:VAL:HG12	1.94	0.49
1:A:191:LEU:HD21	1:A:205:ALA:HA	1.94	0.49
1:A:132:ARG:HG3	1:A:205:ALA:HB1	1.94	0.49
1:B:132:ARG:HG3	1:B:205:ALA:HB1	1.95	0.49
1:B:205:ALA:O	1:B:209:THR:HB	2.12	0.49
1:A:166:TYR:CD2	1:A:211:MET:HE3	2.44	0.49
1:A:45:THR:C	6:A:256:HOH:O	2.50	0.49
1:A:59:ARG:CD	6:A:304:HOH:O	2.61	0.49
1:A:180:ASN:HD22	1:A:180:ASN:H	1.60	0.48
5:B:600:CPS:H30	5:B:600:CPS:O1S	2.12	0.48
2:E:8:PRO:CG	2:E:9:PHE:H	2.25	0.48
1:B:114:LEU:O	1:B:118:GLN:HG3	2.14	0.48
2:F:8:PRO:CB	2:F:9:PHE:CB	2.90	0.48
1:A:19:SER:CB	4:A:800:GOL:H11	2.42	0.48
1:B:141:HIS:HE1	6:B:258:HOH:O	1.97	0.48
1:A:16:SER:HB3	4:A:800:GOL:H12	1.96	0.47
1:B:27:GLU:OE2	1:B:107:SER:OG	2.13	0.47
1:B:40:ARG:C	1:B:42:LYS:HA	2.34	0.47
1:B:70:ARG:HD3	6:B:300:HOH:O	2.13	0.47
1:A:5:GLN:HE21	1:A:28:GLU:H	1.61	0.47
1:A:6:ARG:HB3	6:A:341:HOH:O	2.15	0.46
1:B:126:THR:HG23	1:B:129:PRO:CD	2.45	0.46
1:B:34:LEU:HD23	1:B:67:LYS:HB2	1.98	0.46
1:B:166:TYR:HD2	1:B:211:MET:HE3	1.77	0.46
2:E:8:PRO:CG	2:E:9:PHE:N	2.78	0.46
1:B:41:SER:N	1:B:42:LYS:CA	2.68	0.46
1:B:41:SER:HB3	1:B:43:ARG:HG2	1.97	0.46
1:A:84:ILE:HG13	1:A:228:PHE:HE2	1.80	0.46
1:A:167:ARG:CB	1:A:170:LYS:CB	2.94	0.45
1:A:12:SER:O	1:A:13:ARG:NH1	2.49	0.45
1:B:132:ARG:HA	1:B:132:ARG:HD3	1.61	0.45
1:A:144:TYR:CD1	1:A:146:VAL:HG23	2.52	0.45
1:B:76:SER:HB2	6:B:280:HOH:O	2.17	0.45
1:B:161:THR:HG23	6:B:266:HOH:O	2.17	0.44
1:A:2:GLU:CB	1:A:3:GLY:O	2.66	0.44
1:A:108:GLU:CD	1:A:108:GLU:N	2.66	0.44

Continued on next page...

Continued from previous page...

Atom-1	Atom-2	Interatomic distance (Å)	Clash overlap (Å)
1:A:125:GLY:HA2	1:A:126:THR:HA	1.53	0.44
1:A:167:ARG:NH2	1:A:173:ILE:HD11	2.32	0.44
1:A:203:ARG:HD2	6:A:279:HOH:O	2.18	0.44
1:A:59:ARG:NH2	1:A:70:ARG:HD3	2.33	0.44
1:A:132:ARG:CD	1:A:135:GLU:OE1	2.64	0.44
2:F:8:PRO:HB2	2:F:9:PHE:HA	2.00	0.44
1:A:106:PHE:HB3	1:A:109:LEU:HB3	1.99	0.44
1:A:126:THR:OG1	1:A:127:PRO:HD2	2.17	0.44
1:A:132:ARG:HD3	1:A:132:ARG:HA	1.56	0.44
1:B:42:LYS:C	1:B:43:ARG:HG2	2.37	0.44
1:A:56:LEU:HB3	1:A:58:LEU:HD13	2.00	0.43
1:B:19:SER:OG	1:B:37:LYS:HA	2.19	0.43
1:B:132:ARG:NH2	1:B:206:LYS:HD3	2.33	0.43
1:A:31:ARG:NH1	1:A:97:SER:O	2.50	0.43
1:B:126:THR:HG23	1:B:129:PRO:HD3	2.00	0.43
1:A:225:ARG:HG2	1:A:225:ARG:HH11	1.83	0.43
2:E:9:PHE:O	2:E:9:PHE:CG	2.67	0.43
1:B:125:GLY:N	6:B:331:HOH:O	2.37	0.42
2:F:8:PRO:HB2	2:F:9:PHE:CB	2.49	0.42
1:A:76:SER:C	1:A:78:ALA:N	2.73	0.42
1:B:128:GLU:N	1:B:129:PRO:CD	2.83	0.42
1:A:132:ARG:HH22	2:E:9:PHE:C	2.24	0.41
1:A:186:ARG:NH1	1:A:186:ARG:HB2	2.35	0.41
1:B:35:VAL:HG23	1:B:66:VAL:HG11	2.01	0.41
1:B:166:TYR:CD2	1:B:211:MET:CE	3.01	0.41
1:B:34:LEU:CD2	1:B:67:LYS:HB2	2.50	0.41
1:B:68:THR:O	1:B:70:ARG:NH1	2.54	0.41
1:A:91:TYR:CD2	1:A:92:ILE:HD13	2.56	0.41
1:B:68:THR:HB	1:B:70:ARG:HH12	1.86	0.41
2:F:9:PHE:HB2	6:F:95:HOH:O	2.21	0.40
1:A:33:ARG:HG3	1:A:102:TYR:CE1	2.56	0.40
2:F:8:PRO:CB	2:F:9:PHE:CA	3.00	0.40
1:A:168:GLU:O	1:A:169:GLU:CB	2.69	0.40
1:B:61:GLY:H	1:B:70:ARG:NH1	2.20	0.40
1:B:177:VAL:O	1:B:177:VAL:HG22	2.21	0.40
2:F:9:PHE:OXT	2:F:9:PHE:CG	2.70	0.40

There are no symmetry-related clashes.

5.3 Torsion angles [i](#)

5.3.1 Protein backbone [i](#)

In the following table, the Percentiles column shows the percent Ramachandran outliers of the chain as a percentile score with respect to all X-ray entries followed by that with respect to entries of similar resolution.

The Analysed column shows the number of residues for which the backbone conformation was analysed, and the total number of residues.

Mol	Chain	Analysed	Favoured	Allowed	Outliers	Percentiles	
1	A	229/242 (95%)	214 (93%)	12 (5%)	3 (1%)	12	12
1	B	230/242 (95%)	218 (95%)	11 (5%)	1 (0%)	34	42
2	E	1/10 (10%)	0	0	1 (100%)	0	0
2	F	1/10 (10%)	0	0	1 (100%)	0	0
All	All	461/504 (92%)	432 (94%)	23 (5%)	6 (1%)	12	12

All (6) Ramachandran outliers are listed below:

Mol	Chain	Res	Type
1	A	81	LEU
1	A	125	GLY
2	E	8	PRO
2	F	8	PRO
1	A	218	GLY
1	B	43	ARG

5.3.2 Protein sidechains [i](#)

In the following table, the Percentiles column shows the percent sidechain outliers of the chain as a percentile score with respect to all X-ray entries followed by that with respect to entries of similar resolution.

The Analysed column shows the number of residues for which the sidechain conformation was analysed, and the total number of residues.

Mol	Chain	Analysed	Rotameric	Outliers	Percentiles	
1	A	191/204 (94%)	166 (87%)	25 (13%)	4	4
1	B	194/204 (95%)	170 (88%)	24 (12%)	4	5
2	E	3/10 (30%)	3 (100%)	0	100	100
2	F	3/10 (30%)	2 (67%)	1 (33%)	0	0

Continued on next page...

Continued from previous page...

Mol	Chain	Analysed	Rotameric	Outliers	Percentiles
All	All	391/428 (91%)	341 (87%)	50 (13%)	4 4

All (50) residues with a non-rotameric sidechain are listed below:

Mol	Chain	Res	Type
1	A	41	SER
1	A	42	LYS
1	A	45	THR
1	A	46	LEU
1	A	58	LEU
1	A	67	LYS
1	A	68	THR
1	A	76	SER
1	A	77	LEU
1	A	79	LEU
1	A	82	SER
1	A	108	GLU
1	A	117	ILE
1	A	123	VAL
1	A	131	LEU
1	A	132	ARG
1	A	144	TYR
1	A	154	SER
1	A	167	ARG
1	A	170	LYS
1	A	180	ASN
1	A	181	LYS
1	A	184	THR
1	A	220	LYS
1	A	229	ARG
1	B	2	GLU
1	B	17	GLU
1	B	20	LEU
1	B	37	LYS
1	B	42	LYS
1	B	43	ARG
1	B	45	THR
1	B	50	LEU
1	B	71	SER
1	B	99	VAL
1	B	105	ARG
1	B	123	VAL

Continued on next page...

Continued from previous page...

Mol	Chain	Res	Type
1	B	132	ARG
1	B	144	TYR
1	B	154	SER
1	B	165	ARG
1	B	168	GLU
1	B	177	VAL
1	B	186	ARG
1	B	202	LEU
1	B	209	THR
1	B	214	LYS
1	B	220	LYS
1	B	232	MET
2	F	9	PHE

Sometimes sidechains can be flipped to improve hydrogen bonding and reduce clashes. All (8) such sidechains are listed below:

Mol	Chain	Res	Type
1	A	5	GLN
1	A	51	GLN
1	A	141	HIS
1	A	150	HIS
1	A	180	ASN
1	B	5	GLN
1	B	150	HIS
1	B	180	ASN

5.3.3 RNA [i](#)

There are no RNA molecules in this entry.

5.4 Non-standard residues in protein, DNA, RNA chains [i](#)

There are no non-standard protein/DNA/RNA residues in this entry.

5.5 Carbohydrates [i](#)

There are no monosaccharides in this entry.

5.6 Ligand geometry

3 ligands are modelled in this entry.

In the following table, the Counts columns list the number of bonds (or angles) for which Mogul statistics could be retrieved, the number of bonds (or angles) that are observed in the model and the number of bonds (or angles) that are defined in the Chemical Component Dictionary. The Link column lists molecule types, if any, to which the group is linked. The Z score for a bond length (or angle) is the number of standard deviations the observed value is removed from the expected value. A bond length (or angle) with $|Z| > 2$ is considered an outlier worth inspection. RMSZ is the root-mean-square of all Z scores of the bond lengths (or angles).

Mol	Type	Chain	Res	Link	Bond lengths			Bond angles		
					Counts	RMSZ	# Z > 2	Counts	RMSZ	# Z > 2
3	MLT	A	700	-	8,8,8	1.01	0	10,10,10	1.25	1 (10%)
5	CPS	B	600	-	45,45,45	1.29	1 (2%)	69,70,70	1.08	3 (4%)
4	GOL	A	800	-	5,5,5	0.41	0	5,5,5	0.53	0

In the following table, the Chirals column lists the number of chiral outliers, the number of chiral centers analysed, the number of these observed in the model and the number defined in the Chemical Component Dictionary. Similar counts are reported in the Torsion and Rings columns. '-' means no outliers of that kind were identified.

Mol	Type	Chain	Res	Link	Chirals	Torsions	Rings
3	MLT	A	700	-	-	6/8/8/8	-
5	CPS	B	600	-	-	3/25/90/90	0/4/4/4
4	GOL	A	800	-	-	0/4/4/4	-

All (1) bond length outliers are listed below:

Mol	Chain	Res	Type	Atoms	Z	Observed(Å)	Ideal(Å)
5	B	600	CPS	C32-S	-6.80	1.67	1.77

All (4) bond angle outliers are listed below:

Mol	Chain	Res	Type	Atoms	Z	Observed(°)	Ideal(°)
5	B	600	CPS	O2S-S-C32	3.99	112.22	105.77
5	B	600	CPS	C16-C17-C18	2.82	114.49	111.48
3	A	700	MLT	O2-C1-C2	2.72	118.69	112.72
5	B	600	CPS	C8-C9-C20	-2.34	108.52	112.15

There are no chirality outliers.

All (9) torsion outliers are listed below:

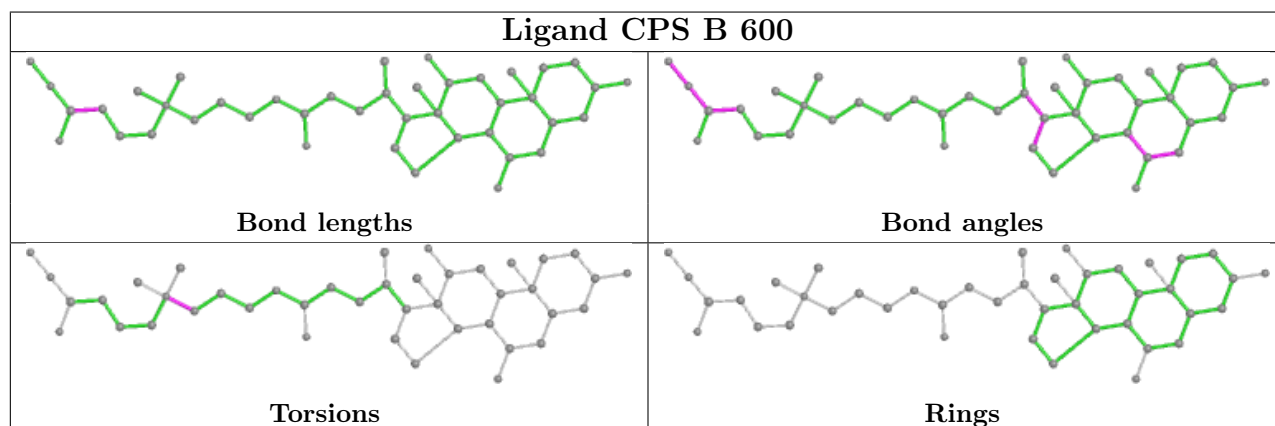
Mol	Chain	Res	Type	Atoms
3	A	700	MLT	O1-C1-C2-O3
3	A	700	MLT	O2-C1-C2-O3
3	A	700	MLT	C1-C2-C3-C4
3	A	700	MLT	O3-C2-C3-C4
5	B	600	CPS	C26-C27-N2-C30
5	B	600	CPS	C26-C27-N2-C29
5	B	600	CPS	C26-C27-N2-C28
3	A	700	MLT	O2-C1-C2-C3
3	A	700	MLT	O1-C1-C2-C3

There are no ring outliers.

2 monomers are involved in 8 short contacts:

Mol	Chain	Res	Type	Clashes	Symm-Clashes
5	B	600	CPS	1	0
4	A	800	GOL	7	0

The following is a two-dimensional graphical depiction of Mogul quality analysis of bond lengths, bond angles, torsion angles, and ring geometry for all instances of the Ligand of Interest. In addition, ligands with molecular weight > 250 and outliers as shown on the validation Tables will also be included. For torsion angles, if less than 5% of the Mogul distribution of torsion angles is within 10 degrees of the torsion angle in question, then that torsion angle is considered an outlier. Any bond that is central to one or more torsion angles identified as an outlier by Mogul will be highlighted in the graph. For rings, the root-mean-square deviation (RMSD) between the ring in question and similar rings identified by Mogul is calculated over all ring torsion angles. If the average RMSD is greater than 60 degrees and the minimal RMSD between the ring in question and any Mogul-identified rings is also greater than 60 degrees, then that ring is considered an outlier. The outliers are highlighted in purple. The color gray indicates Mogul did not find sufficient equivalents in the CSD to analyse the geometry.



5.7 Other polymers [i](#)

There are no such residues in this entry.

5.8 Polymer linkage issues [i](#)

There are no chain breaks in this entry.

6 Fit of model and data

6.1 Protein, DNA and RNA chains

In the following table, the column labelled ‘#RSRZ > 2’ contains the number (and percentage) of RSRZ outliers, followed by percent RSRZ outliers for the chain as percentile scores relative to all X-ray entries and entries of similar resolution. The OWAB column contains the minimum, median, 95th percentile and maximum values of the occupancy-weighted average B-factor per residue. The column labelled ‘Q < 0.9’ lists the number of (and percentage) of residues with an average occupancy less than 0.9.

Mol	Chain	Analysed	<RSRZ>	#RSRZ>2	OWAB(Å ²)	Q<0.9
1	A	231/242 (95%)	0.11	18 (7%) 13 17	22, 43, 76, 94	2 (0%)
1	B	232/242 (95%)	0.13	12 (5%) 27 34	22, 43, 79, 104	0
2	E	3/10 (30%)	2.54	2 (66%) 0 0	80, 80, 90, 94	0
2	F	3/10 (30%)	1.53	1 (33%) 0 0	73, 73, 78, 85	0
All	All	469/504 (93%)	0.15	33 (7%) 16 21	22, 43, 80, 104	2 (0%)

All (33) RSRZ outliers are listed below:

Mol	Chain	Res	Type	RSRZ
1	A	79	LEU	6.3
1	B	43	ARG	6.2
1	B	124	THR	6.2
1	A	43	ARG	5.9
1	B	41	SER	5.8
1	A	80	PRO	5.6
1	A	153	GLY	5.6
1	A	125	GLY	4.7
1	B	152	ALA	4.7
2	E	7	ILE	4.4
1	B	168	GLU	4.3
1	A	124	THR	4.3
2	F	7	ILE	4.2
1	A	169	GLU	4.1
1	A	42	LYS	3.7
1	B	42	LYS	3.4
1	B	170	LYS	3.4
1	A	167	ARG	3.3
1	A	218	GLY	3.1
1	B	153	GLY	3.1
2	E	8	PRO	3.0

Continued on next page...

Continued from previous page...

Mol	Chain	Res	Type	RSRZ
1	B	233	PRO	2.7
1	B	169	GLU	2.7
1	A	45	THR	2.7
1	A	2	GLU	2.5
1	A	170	LYS	2.4
1	A	220	LYS	2.4
1	B	125	GLY	2.3
1	A	78	ALA	2.3
1	A	3	GLY	2.2
1	A	168	GLU	2.1
1	B	9	VAL	2.1
1	A	232	MET	2.0

6.2 Non-standard residues in protein, DNA, RNA chains [i](#)

There are no non-standard protein/DNA/RNA residues in this entry.

6.3 Carbohydrates [i](#)

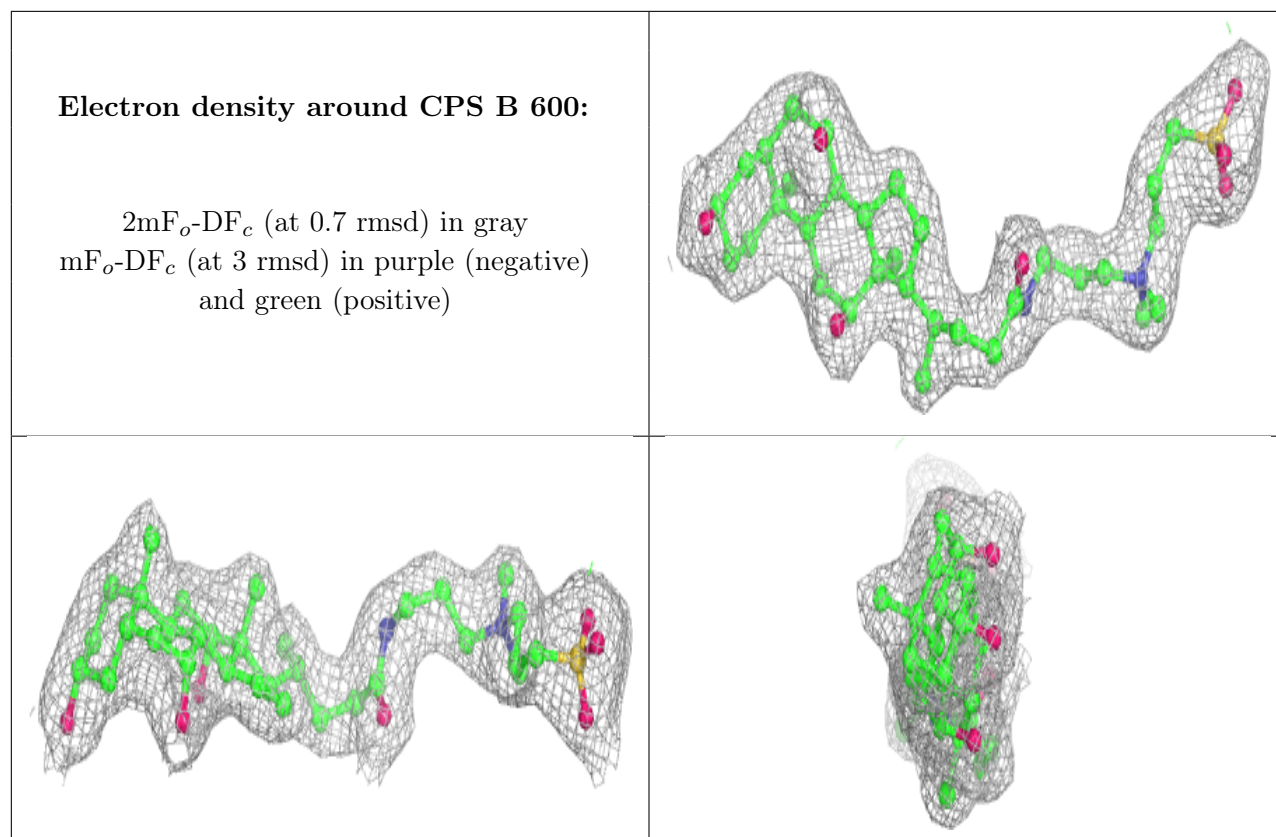
There are no monosaccharides in this entry.

6.4 Ligands [i](#)

In the following table, the Atoms column lists the number of modelled atoms in the group and the number defined in the chemical component dictionary. The B-factors column lists the minimum, median, 95th percentile and maximum values of B factors of atoms in the group. The column labelled 'Q< 0.9' lists the number of atoms with occupancy less than 0.9.

Mol	Type	Chain	Res	Atoms	RSCC	RSR	B-factors(Å ²)	Q<0.9
3	MLT	A	700	9/9	0.79	0.33	95,98,100,100	0
4	GOL	A	800	6/6	0.85	0.21	51,57,59,60	0
5	CPS	B	600	42/42	0.98	0.15	19,29,42,43	0

The following is a graphical depiction of the model fit to experimental electron density of all instances of the Ligand of Interest. In addition, ligands with molecular weight > 250 and outliers as shown on the geometry validation Tables will also be included. Each fit is shown from different orientation to approximate a three-dimensional view.



6.5 Other polymers [i](#)

There are no such residues in this entry.