



# wwPDB X-ray Structure Validation Summary Report ⓘ

May 14, 2026 – 06:07 PM EDT

PDB ID : 9Q6G / pdb\_00009q6g  
Title : PYCR2 complexed with NAD<sup>+</sup> and (2S)-2-hydroxy-3,3-dimethylbutanoic acid  
Authors : Tanner, J.J.; Meeks, K.R.  
Deposited on : 2025-08-22  
Resolution : 2.65 Å(reported)

This is a wwPDB X-ray Structure Validation Summary Report for a publicly released PDB entry.

We welcome your comments at [validation@mail.wwpdb.org](mailto:validation@mail.wwpdb.org)

A user guide is available at

<https://www.wwpdb.org/validation/2017/XrayValidationReportHelp>

with specific help available everywhere you see the ⓘ symbol.

The types of validation reports are described at

<http://www.wwpdb.org/validation/2017/FAQs#types>.

---

The following versions of software and data (see [references ⓘ](#)) were used in the production of this report:

MolProbity : 4-5-2 with Phenix2.0  
Mogul : 2022.3.0, CSD as543be (2022)  
Xtriage (Phenix) : 2.0  
EDS : 3.0  
Buster-report : wwPDB partial adaption of 1.1.7 (2018)  
Percentile statistics : 20250101.v01 (using entries in the PDB archive January 1st 2025)  
CCP4 : 9.0.010 (Gargrove)  
Density-Fitness : 1.0.12  
Ideal geometry (proteins) : Engh & Huber (2001)  
Ideal geometry (DNA, RNA) : Parkinson et al. (1996)  
Validation Pipeline (wwPDB-VP) : 2.49

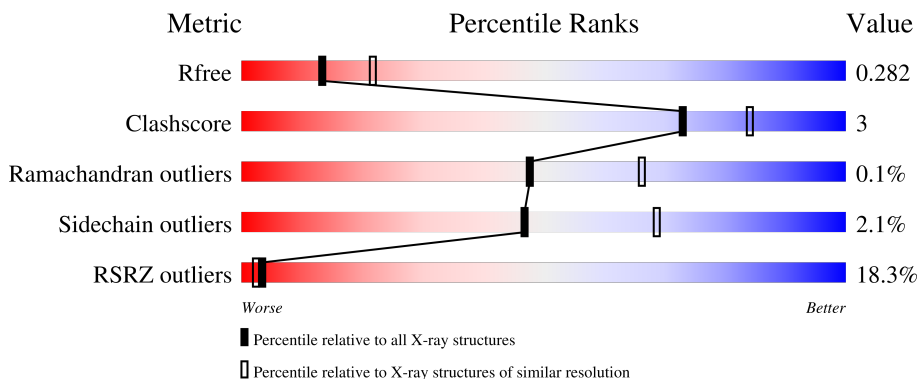
# 1 Overall quality at a glance

The following experimental techniques were used to determine the structure:

*X-RAY DIFFRACTION*

The reported resolution of this entry is 2.65 Å.

Percentile scores (ranging between 0-100) for global validation metrics of the entry are shown in the following graphic. The table shows the number of entries on which the scores are based.



Metric	Whole archive (#Entries)	Similar resolution (#Entries, resolution range(Å))
$R_{free}$	180053	1110 (2.66-2.66)
Clashscore	190562	1141 (2.66-2.66)
Ramachandran outliers	187476	1126 (2.66-2.66)
Sidechain outliers	187428	1126 (2.66-2.66)
RSRZ outliers	180081	1110 (2.66-2.66)

The table below summarises the geometric issues observed across the polymeric chains and their fit to the electron density. The red, orange, yellow and green segments of the lower bar indicate the fraction of residues that contain outliers for  $\geq 3$ , 2, 1 and 0 types of geometric quality criteria respectively. A grey segment represents the fraction of residues that are not modelled. The numeric value for each fraction is indicated below the corresponding segment, with a dot representing fractions  $\leq 5\%$ . The upper red bar (where present) indicates the fraction of residues that have poor fit to the electron density. The numeric value is given above the bar.

Mol	Chain	Length	Quality of chain
1	A	316	<div> <div>6%</div> <div> <div></div> <div>79%</div> <div>8%</div> <div>14%</div> </div> </div>
1	B	316	<div> <div>3%</div> <div> <div></div> <div>78%</div> <div>9%</div> <div>14%</div> </div> </div>
1	C	316	<div> <div>27%</div> <div> <div></div> <div>76%</div> <div>9%</div> <div>15%</div> </div> </div>
1	D	316	<div> <div>36%</div> <div> <div></div> <div>71%</div> <div>8%</div> <div>22%</div> </div> </div>
1	E	316	<div> <div>5%</div> <div> <div></div> <div>82%</div> <div>•</div> <div>14%</div> </div> </div>

## 2 Entry composition

There are 5 unique types of molecules in this entry. The entry contains 9079 atoms, of which 0 are hydrogens and 0 are deuteriums.

In the tables below, the ZeroOcc column contains the number of atoms modelled with zero occupancy, the AltConf column contains the number of residues with at least one atom in alternate conformation and the Trace column contains the number of residues modelled with at most 2 atoms.

- Molecule 1 is a protein called Pyrroline-5-carboxylate reductase 2.

Mol	Chain	Residues	Atoms					ZeroOcc	AltConf	Trace
1	A	273	Total	C	N	O	S	0	0	0
			1858	1158	329	356	15			
1	B	273	Total	C	N	O	S	0	0	0
			1853	1150	331	357	15			
1	C	269	Total	C	N	O	S	0	0	0
			1711	1053	309	336	13			
1	D	248	Total	C	N	O	S	0	0	0
			1565	966	282	306	11			
1	E	273	Total	C	N	O	S	0	0	0
			1860	1156	330	360	14			

There are 115 discrepancies between the modelled and reference sequences:

Chain	Residue	Modelled	Actual	Comment	Reference
A	-21	MET	-	initiating methionine	UNP Q96C36
A	-20	HIS	-	expression tag	UNP Q96C36
A	-19	HIS	-	expression tag	UNP Q96C36
A	-18	HIS	-	expression tag	UNP Q96C36
A	-17	HIS	-	expression tag	UNP Q96C36
A	-16	HIS	-	expression tag	UNP Q96C36
A	-15	HIS	-	expression tag	UNP Q96C36
A	-14	SER	-	expression tag	UNP Q96C36
A	-13	SER	-	expression tag	UNP Q96C36
A	-12	GLY	-	expression tag	UNP Q96C36
A	-11	VAL	-	expression tag	UNP Q96C36
A	-10	ASP	-	expression tag	UNP Q96C36
A	-9	LEU	-	expression tag	UNP Q96C36
A	-8	GLY	-	expression tag	UNP Q96C36
A	-7	THR	-	expression tag	UNP Q96C36
A	-6	GLU	-	expression tag	UNP Q96C36
A	-5	ASN	-	expression tag	UNP Q96C36
A	-4	LEU	-	expression tag	UNP Q96C36
A	-3	TYR	-	expression tag	UNP Q96C36

*Continued on next page...*

*Continued from previous page...*

Chain	Residue	Modelled	Actual	Comment	Reference
A	-2	PHE	-	expression tag	UNP Q96C36
A	-1	GLN	-	expression tag	UNP Q96C36
A	0	SER	-	expression tag	UNP Q96C36
A	276	GLN	LYS	engineered mutation	UNP Q96C36
B	-21	MET	-	initiating methionine	UNP Q96C36
B	-20	HIS	-	expression tag	UNP Q96C36
B	-19	HIS	-	expression tag	UNP Q96C36
B	-18	HIS	-	expression tag	UNP Q96C36
B	-17	HIS	-	expression tag	UNP Q96C36
B	-16	HIS	-	expression tag	UNP Q96C36
B	-15	HIS	-	expression tag	UNP Q96C36
B	-14	SER	-	expression tag	UNP Q96C36
B	-13	SER	-	expression tag	UNP Q96C36
B	-12	GLY	-	expression tag	UNP Q96C36
B	-11	VAL	-	expression tag	UNP Q96C36
B	-10	ASP	-	expression tag	UNP Q96C36
B	-9	LEU	-	expression tag	UNP Q96C36
B	-8	GLY	-	expression tag	UNP Q96C36
B	-7	THR	-	expression tag	UNP Q96C36
B	-6	GLU	-	expression tag	UNP Q96C36
B	-5	ASN	-	expression tag	UNP Q96C36
B	-4	LEU	-	expression tag	UNP Q96C36
B	-3	TYR	-	expression tag	UNP Q96C36
B	-2	PHE	-	expression tag	UNP Q96C36
B	-1	GLN	-	expression tag	UNP Q96C36
B	0	SER	-	expression tag	UNP Q96C36
B	276	GLN	LYS	engineered mutation	UNP Q96C36
C	-21	MET	-	initiating methionine	UNP Q96C36
C	-20	HIS	-	expression tag	UNP Q96C36
C	-19	HIS	-	expression tag	UNP Q96C36
C	-18	HIS	-	expression tag	UNP Q96C36
C	-17	HIS	-	expression tag	UNP Q96C36
C	-16	HIS	-	expression tag	UNP Q96C36
C	-15	HIS	-	expression tag	UNP Q96C36
C	-14	SER	-	expression tag	UNP Q96C36
C	-13	SER	-	expression tag	UNP Q96C36
C	-12	GLY	-	expression tag	UNP Q96C36
C	-11	VAL	-	expression tag	UNP Q96C36
C	-10	ASP	-	expression tag	UNP Q96C36
C	-9	LEU	-	expression tag	UNP Q96C36
C	-8	GLY	-	expression tag	UNP Q96C36
C	-7	THR	-	expression tag	UNP Q96C36

*Continued on next page...*

*Continued from previous page...*

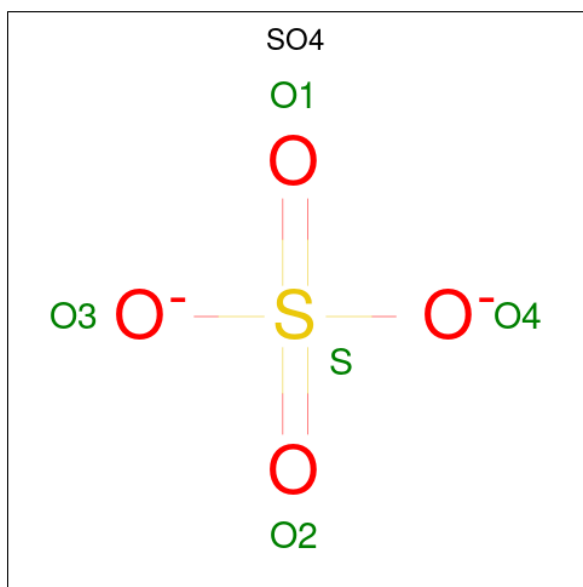
Chain	Residue	Modelled	Actual	Comment	Reference
C	-6	GLU	-	expression tag	UNP Q96C36
C	-5	ASN	-	expression tag	UNP Q96C36
C	-4	LEU	-	expression tag	UNP Q96C36
C	-3	TYR	-	expression tag	UNP Q96C36
C	-2	PHE	-	expression tag	UNP Q96C36
C	-1	GLN	-	expression tag	UNP Q96C36
C	0	SER	-	expression tag	UNP Q96C36
C	276	GLN	LYS	engineered mutation	UNP Q96C36
D	-21	MET	-	initiating methionine	UNP Q96C36
D	-20	HIS	-	expression tag	UNP Q96C36
D	-19	HIS	-	expression tag	UNP Q96C36
D	-18	HIS	-	expression tag	UNP Q96C36
D	-17	HIS	-	expression tag	UNP Q96C36
D	-16	HIS	-	expression tag	UNP Q96C36
D	-15	HIS	-	expression tag	UNP Q96C36
D	-14	SER	-	expression tag	UNP Q96C36
D	-13	SER	-	expression tag	UNP Q96C36
D	-12	GLY	-	expression tag	UNP Q96C36
D	-11	VAL	-	expression tag	UNP Q96C36
D	-10	ASP	-	expression tag	UNP Q96C36
D	-9	LEU	-	expression tag	UNP Q96C36
D	-8	GLY	-	expression tag	UNP Q96C36
D	-7	THR	-	expression tag	UNP Q96C36
D	-6	GLU	-	expression tag	UNP Q96C36
D	-5	ASN	-	expression tag	UNP Q96C36
D	-4	LEU	-	expression tag	UNP Q96C36
D	-3	TYR	-	expression tag	UNP Q96C36
D	-2	PHE	-	expression tag	UNP Q96C36
D	-1	GLN	-	expression tag	UNP Q96C36
D	0	SER	-	expression tag	UNP Q96C36
D	276	GLN	LYS	engineered mutation	UNP Q96C36
E	-21	MET	-	initiating methionine	UNP Q96C36
E	-20	HIS	-	expression tag	UNP Q96C36
E	-19	HIS	-	expression tag	UNP Q96C36
E	-18	HIS	-	expression tag	UNP Q96C36
E	-17	HIS	-	expression tag	UNP Q96C36
E	-16	HIS	-	expression tag	UNP Q96C36
E	-15	HIS	-	expression tag	UNP Q96C36
E	-14	SER	-	expression tag	UNP Q96C36
E	-13	SER	-	expression tag	UNP Q96C36
E	-12	GLY	-	expression tag	UNP Q96C36
E	-11	VAL	-	expression tag	UNP Q96C36

*Continued on next page...*

Continued from previous page...

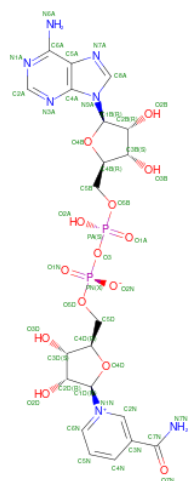
Chain	Residue	Modelled	Actual	Comment	Reference
E	-10	ASP	-	expression tag	UNP Q96C36
E	-9	LEU	-	expression tag	UNP Q96C36
E	-8	GLY	-	expression tag	UNP Q96C36
E	-7	THR	-	expression tag	UNP Q96C36
E	-6	GLU	-	expression tag	UNP Q96C36
E	-5	ASN	-	expression tag	UNP Q96C36
E	-4	LEU	-	expression tag	UNP Q96C36
E	-3	TYR	-	expression tag	UNP Q96C36
E	-2	PHE	-	expression tag	UNP Q96C36
E	-1	GLN	-	expression tag	UNP Q96C36
E	0	SER	-	expression tag	UNP Q96C36
E	276	GLN	LYS	engineered mutation	UNP Q96C36

- Molecule 2 is SULFATE ION (CCD ID: SO4) (formula: O<sub>4</sub>S).

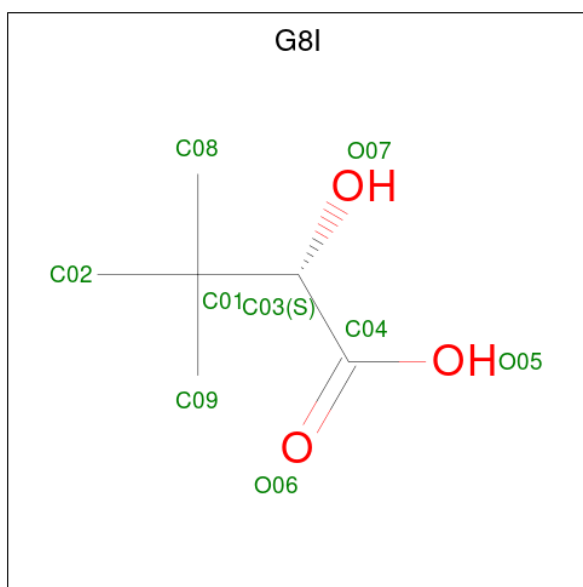


Mol	Chain	Residues	Atoms			ZeroOcc	AltConf
2	A	1	Total	O	S	0	0
			5	4	1		
2	E	1	Total	O	S	0	0
			5	4	1		

- Molecule 3 is NICOTINAMIDE-ADENINE-DINUCLEOTIDE (CCD ID: NAD) (formula: C<sub>21</sub>H<sub>27</sub>N<sub>7</sub>O<sub>14</sub>P<sub>2</sub>) (labeled as "Ligand of Interest" by depositor).



- Molecule 4 is (2S)-2-hydroxy-3,3-dimethylbutanoic acid (CCD ID: G8I) (formula:  $\text{C}_6\text{H}_{12}\text{O}_3$ ) (labeled as "Ligand of Interest" by depositor).



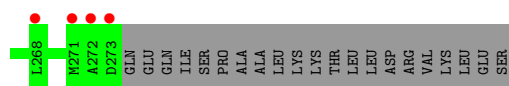
Mol	Chain	Residues	Atoms			ZeroOcc	AltConf
4	B	1	Total	C	O	0	0
			9	6	3		
4	E	1	Total	C	O	0	0
			9	6	3		

- Molecule 5 is water.

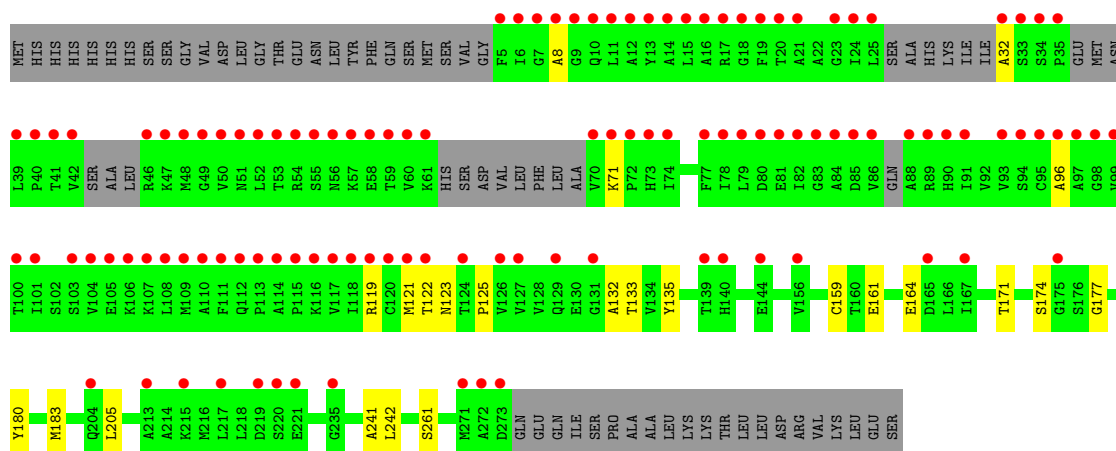
Mol	Chain	Residues	Atoms		ZeroOcc	AltConf
5	A	4	Total	O	0	0
			4	4		
5	B	4	Total	O	0	0
			4	4		
5	E	1	Total	O	0	0
			1	1		



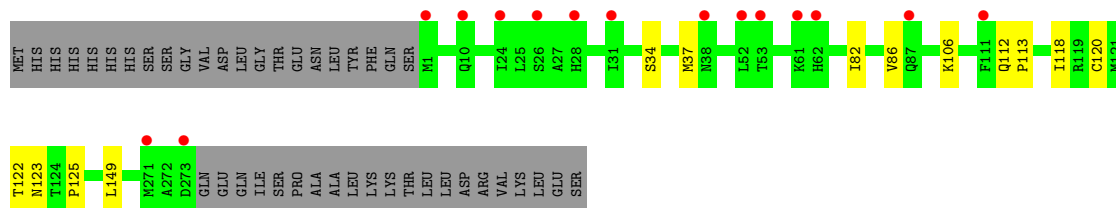
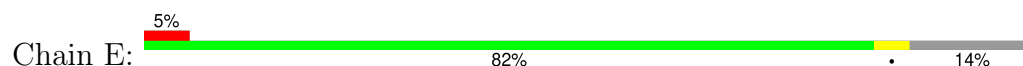




• Molecule 1: Pyrroline-5-carboxylate reductase 2



• Molecule 1: Pyrroline-5-carboxylate reductase 2



## 4 Data and refinement statistics

Property	Value	Source
Space group	P 21 2 21	Depositor
Cell constants a, b, c, $\alpha$ , $\beta$ , $\gamma$	104.34Å 109.94Å 154.00Å 90.00° 90.00° 90.00°	Depositor
Resolution (Å)	48.63 – 2.65 48.63 – 2.65	Depositor EDS
% Data completeness (in resolution range)	99.7 (48.63-2.65) 99.9 (48.63-2.65)	Depositor EDS
$R_{merge}$	0.30	Depositor
$R_{sym}$	(Not available)	Depositor
$\langle I/\sigma(I) \rangle$ <sup>1</sup>	1.59 (at 2.65Å)	Xtriage
Refinement program	PHENIX (1.21.2_5419: ???)	Depositor
R, $R_{free}$	0.268 , 0.284 0.264 , 0.282	Depositor DCC
$R_{free}$ test set	939 reflections (1.80%)	wwPDB-VP
Wilson B-factor (Å <sup>2</sup> )	41.7	Xtriage
Anisotropy	0.574	Xtriage
Bulk solvent $k_{sol}$ (e/Å <sup>3</sup> ), $B_{sol}$ (Å <sup>2</sup> )	0.30 , 85.4	EDS
L-test for twinning <sup>2</sup>	$\langle  L  \rangle = 0.46$ , $\langle L^2 \rangle = 0.29$	Xtriage
Estimated twinning fraction	0.026 for k,h,-l	Xtriage
$F_o, F_c$ correlation	0.90	EDS
Total number of atoms	9079	wwPDB-VP
Average B, all atoms (Å <sup>2</sup> )	64.0	wwPDB-VP

Xtriage's analysis on translational NCS is as follows: *The largest off-origin peak in the Patterson function is 3.26% of the height of the origin peak. No significant pseudotranslation is detected.*

<sup>1</sup>Intensities estimated from amplitudes.

<sup>2</sup>Theoretical values of  $\langle |L| \rangle$ ,  $\langle L^2 \rangle$  for acentric reflections are 0.5, 0.333 respectively for untwinned datasets, and 0.375, 0.2 for perfectly twinned datasets.

## 5 Model quality [i](#)

### 5.1 Standard geometry [i](#)

Bond lengths and bond angles in the following residue types are not validated in this section: NAD, SO4, G8I

The Z score for a bond length (or angle) is the number of standard deviations the observed value is removed from the expected value. A bond length (or angle) with  $|Z| > 5$  is considered an outlier worth inspection. RMSZ is the root-mean-square of all Z scores of the bond lengths (or angles).

Mol	Chain	Bond lengths		Bond angles	
		RMSZ	# Z  >5	RMSZ	# Z  >5
1	A	0.12	0/1884	0.31	0/2566
1	B	0.12	0/1881	0.31	0/2560
1	C	0.13	0/1736	0.34	0/2375
1	D	0.12	0/1581	0.34	0/2155
1	E	0.12	0/1886	0.31	0/2567
All	All	0.12	0/8968	0.32	0/12223

There are no bond length outliers.

There are no bond angle outliers.

There are no chirality outliers.

There are no planarity outliers.

### 5.2 Too-close contacts [i](#)

In the following table, the Non-H and H(model) columns list the number of non-hydrogen atoms and hydrogen atoms in the chain respectively. The H(added) column lists the number of hydrogen atoms added and optimized by MolProbity. The Clashes column lists the number of clashes within the asymmetric unit, whereas Symm-Clashes lists symmetry-related clashes.

Mol	Chain	Non-H	H(model)	H(added)	Clashes	Symm-Clashes
1	A	1858	0	1726	15	0
1	B	1853	0	1697	17	0
1	C	1711	0	1408	16	0
1	D	1565	0	1296	16	0
1	E	1860	0	1718	6	0
2	A	5	0	0	0	0
2	E	5	0	0	0	0
3	A	44	0	26	1	0

*Continued on next page...*

*Continued from previous page...*

Mol	Chain	Non-H	H(model)	H(added)	Clashes	Symm-Clashes
3	B	44	0	26	1	0
3	C	27	0	12	0	0
3	D	36	0	20	1	0
3	E	44	0	26	1	0
4	B	9	0	0	0	0
4	E	9	0	0	0	0
5	A	4	0	0	0	0
5	B	4	0	0	0	0
5	E	1	0	0	0	0
All	All	9079	0	7955	55	0

The all-atom clashscore is defined as the number of clashes found per 1000 atoms (including hydrogen atoms). The all-atom clashscore for this structure is 3.

The worst 5 of 55 close contacts within the same asymmetric unit are listed below, sorted by their clash magnitude.

Atom-1	Atom-2	Interatomic distance (Å)	Clash overlap (Å)
1:A:130:GLU:HG3	1:B:215:LYS:HD3	1.71	0.72
1:B:106:LYS:HA	1:B:109:MET:HE2	1.73	0.70
1:B:228:LYS:HE2	1:B:242:LEU:HD13	1.77	0.67
1:B:31:ILE:HG23	1:B:59:THR:HG23	1.78	0.64
1:C:170:VAL:HG13	1:D:205:LEU:HD13	1.79	0.64

There are no symmetry-related clashes.

## 5.3 Torsion angles [i](#)

### 5.3.1 Protein backbone [i](#)

In the following table, the Percentiles column shows the percent Ramachandran outliers of the chain as a percentile score with respect to all X-ray entries followed by that with respect to entries of similar resolution.

The Analysed column shows the number of residues for which the backbone conformation was analysed, and the total number of residues.

Mol	Chain	Analysed	Favoured	Allowed	Outliers	Percentiles	
1	A	271/316 (86%)	259 (96%)	12 (4%)	0	100	100
1	B	271/316 (86%)	262 (97%)	9 (3%)	0	100	100

*Continued on next page...*

*Continued from previous page...*

Mol	Chain	Analysed	Favoured	Allowed	Outliers	Percentiles	
1	C	267/316 (84%)	256 (96%)	10 (4%)	1 (0%)	30	45
1	D	236/316 (75%)	228 (97%)	8 (3%)	0	100	100
1	E	271/316 (86%)	262 (97%)	9 (3%)	0	100	100
All	All	1316/1580 (83%)	1267 (96%)	48 (4%)	1 (0%)	48	66

All (1) Ramachandran outliers are listed below:

Mol	Chain	Res	Type
1	C	55	SER

### 5.3.2 Protein sidechains ⓘ

In the following table, the Percentiles column shows the percent sidechain outliers of the chain as a percentile score with respect to all X-ray entries followed by that with respect to entries of similar resolution.

The Analysed column shows the number of residues for which the sidechain conformation was analysed, and the total number of residues.

Mol	Chain	Analysed	Rotameric	Outliers	Percentiles	
1	A	166/253 (66%)	164 (99%)	2 (1%)	63	79
1	B	164/253 (65%)	160 (98%)	4 (2%)	43	65
1	C	124/253 (49%)	119 (96%)	5 (4%)	28	47
1	D	110/253 (44%)	108 (98%)	2 (2%)	51	72
1	E	166/253 (66%)	164 (99%)	2 (1%)	63	79
All	All	730/1265 (58%)	715 (98%)	15 (2%)	47	69

5 of 15 residues with a non-rotameric sidechain are listed below:

Mol	Chain	Res	Type
1	C	133	THR
1	E	106	LYS
1	C	161	GLU
1	E	120	CYS
1	D	71	LYS

Sometimes sidechains can be flipped to improve hydrogen bonding and reduce clashes. 5 of 9 such sidechains are listed below:

Mol	Chain	Res	Type
1	E	140	HIS
1	E	226	GLN
1	B	112	GLN
1	B	240	HIS
1	C	256	ASN

### 5.3.3 RNA [i](#)

There are no RNA molecules in this entry.

### 5.4 Non-standard residues in protein, DNA, RNA chains [i](#)

There are no non-standard protein/DNA/RNA residues in this entry.

### 5.5 Carbohydrates [i](#)

There are no oligosaccharides in this entry.

### 5.6 Ligand geometry [i](#)

9 ligands are modelled in this entry.

In the following table, the Counts columns list the number of bonds (or angles) for which Mogul statistics could be retrieved, the number of bonds (or angles) that are observed in the model and the number of bonds (or angles) that are defined in the Chemical Component Dictionary. The Link column lists molecule types, if any, to which the group is linked. The Z score for a bond length (or angle) is the number of standard deviations the observed value is removed from the expected value. A bond length (or angle) with  $|Z| > 2$  is considered an outlier worth inspection. RMSZ is the root-mean-square of all Z scores of the bond lengths (or angles).

Mol	Type	Chain	Res	Link	Bond lengths			Bond angles		
					Counts	RMSZ	# $ Z  > 2$	Counts	RMSZ	# $ Z  > 2$
3	NAD	D	301	-	38,39,48	1.43	2 (5%)	55,60,73	0.77	1 (1%)
3	NAD	E	303	-	46,48,48	1.24	3 (6%)	64,73,73	0.98	4 (6%)
3	NAD	B	302	-	46,48,48	1.22	3 (6%)	64,73,73	0.89	3 (4%)
4	G8I	E	301	-	8,8,8	1.32	1 (12%)	11,12,12	1.03	2 (18%)
2	SO4	A	301	-	4,4,4	0.65	0	6,6,6	0.08	0
3	NAD	A	302	-	46,48,48	1.21	3 (6%)	64,73,73	0.84	2 (3%)
4	G8I	B	301	-	8,8,8	1.40	1 (12%)	11,12,12	0.92	0
2	SO4	E	302	-	4,4,4	0.66	0	6,6,6	0.08	0

Mol	Type	Chain	Res	Link	Bond lengths			Bond angles		
					Counts	RMSZ	# Z  > 2	Counts	RMSZ	# Z  > 2
3	NAD	C	301	-	28,29,48	1.38	2 (7%)	43,45,73	1.01	5 (11%)

In the following table, the Chirals column lists the number of chiral outliers, the number of chiral centers analysed, the number of these observed in the model and the number defined in the Chemical Component Dictionary. Similar counts are reported in the Torsion and Rings columns. '-' means no outliers of that kind were identified.

Mol	Type	Chain	Res	Link	Chirals	Torsions	Rings
3	NAD	E	303	-	-	6/30/62/62	0/5/5/5
3	NAD	C	301	-	-	6/16/32/62	0/3/3/5
3	NAD	B	302	-	-	2/30/62/62	0/5/5/5
4	G8I	E	301	-	-	2/10/10/10	-
3	NAD	A	302	-	-	9/30/62/62	0/5/5/5
4	G8I	B	301	-	-	6/10/10/10	-
3	NAD	D	301	-	-	12/22/54/62	0/4/4/5

The worst 5 of 15 bond length outliers are listed below:

Mol	Chain	Res	Type	Atoms	Z	Observed(Å)	Ideal(Å)
3	D	301	NAD	PA-O3	6.09	1.66	1.59
3	C	301	NAD	PA-O3	5.96	1.65	1.59
3	E	303	NAD	PA-O3	5.64	1.65	1.59
3	B	302	NAD	PA-O3	5.63	1.65	1.59
3	A	302	NAD	PA-O3	5.55	1.65	1.59

The worst 5 of 17 bond angle outliers are listed below:

Mol	Chain	Res	Type	Atoms	Z	Observed(°)	Ideal(°)
3	E	303	NAD	C6N-N1N-C1D	-2.77	114.30	119.73
3	E	303	NAD	O7N-C7N-N7N	2.39	126.06	122.62
4	E	301	G8I	O05-C04-O06	-2.37	118.71	124.08
3	C	301	NAD	O2N-PN-O1N	2.32	119.86	110.83
3	B	302	NAD	O2A-PA-O1A	2.28	123.07	112.44

There are no chirality outliers.

5 of 43 torsion outliers are listed below:

Mol	Chain	Res	Type	Atoms
3	A	302	NAD	C5D-O5D-PN-O2N
3	C	301	NAD	C5B-O5B-PA-O1A

*Continued on next page...*



*Continued from previous page...*

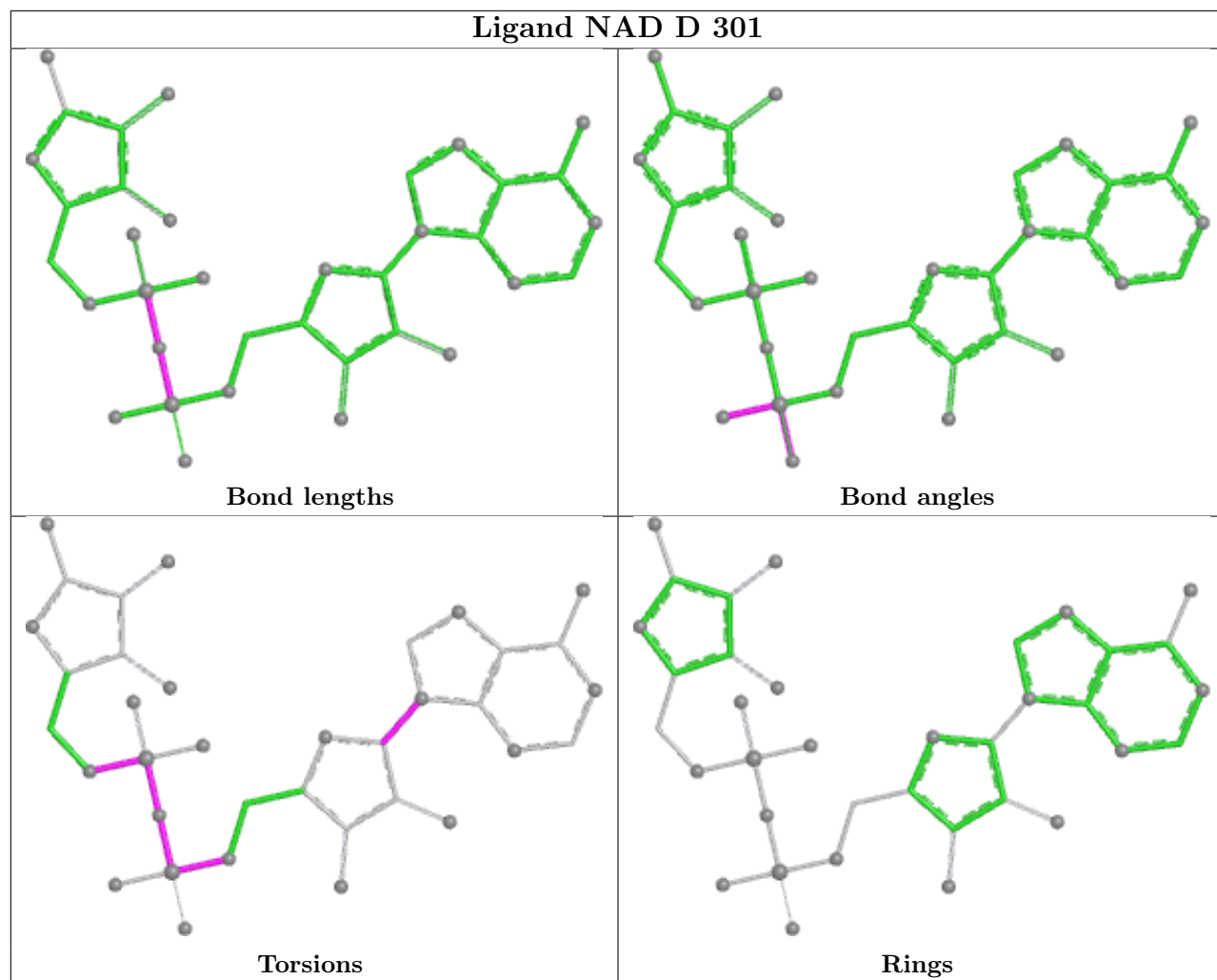
Mol	Chain	Res	Type	Atoms
3	C	301	NAD	O4B-C4B-C5B-O5B
3	D	301	NAD	C5B-O5B-PA-O1A
3	D	301	NAD	C5B-O5B-PA-O3

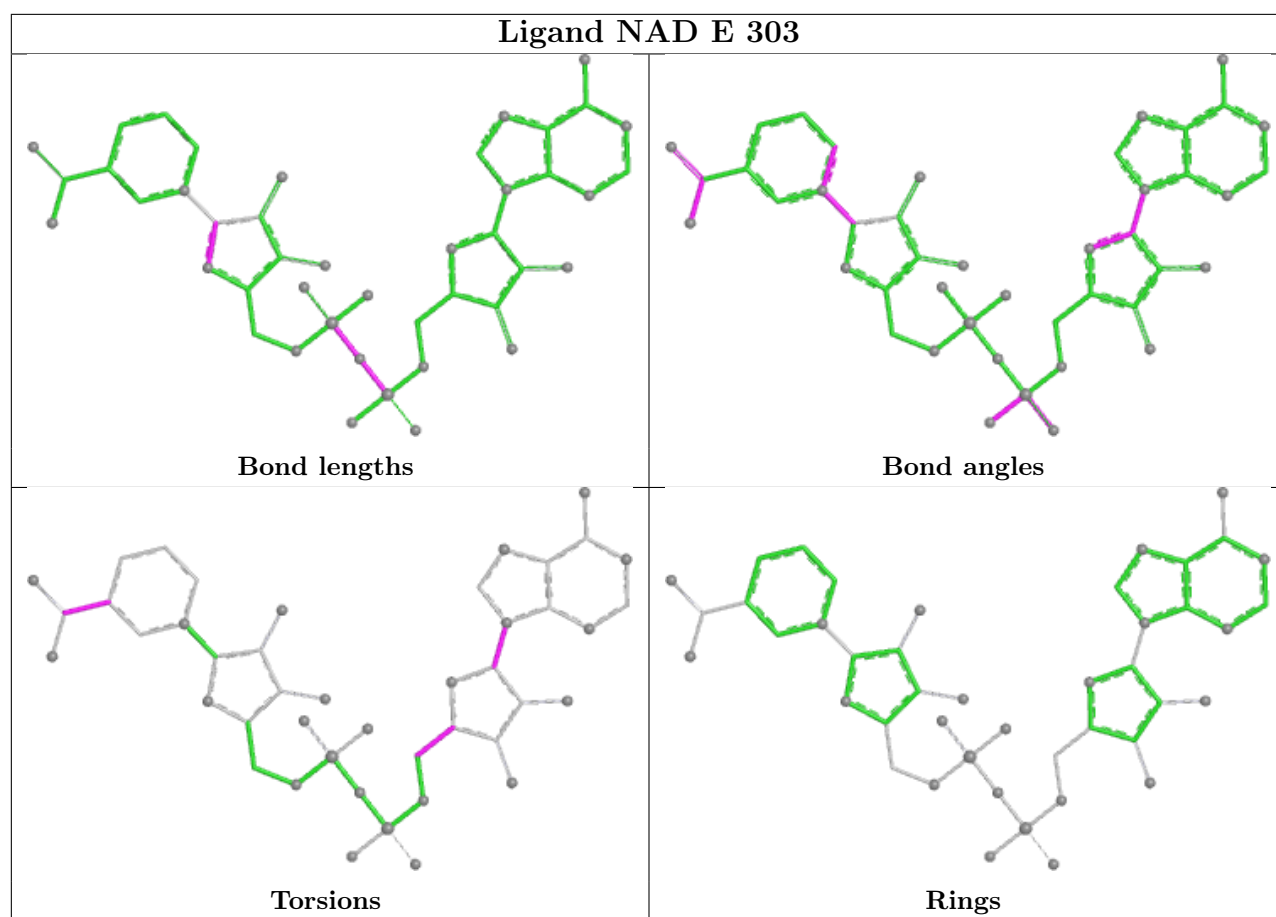
There are no ring outliers.

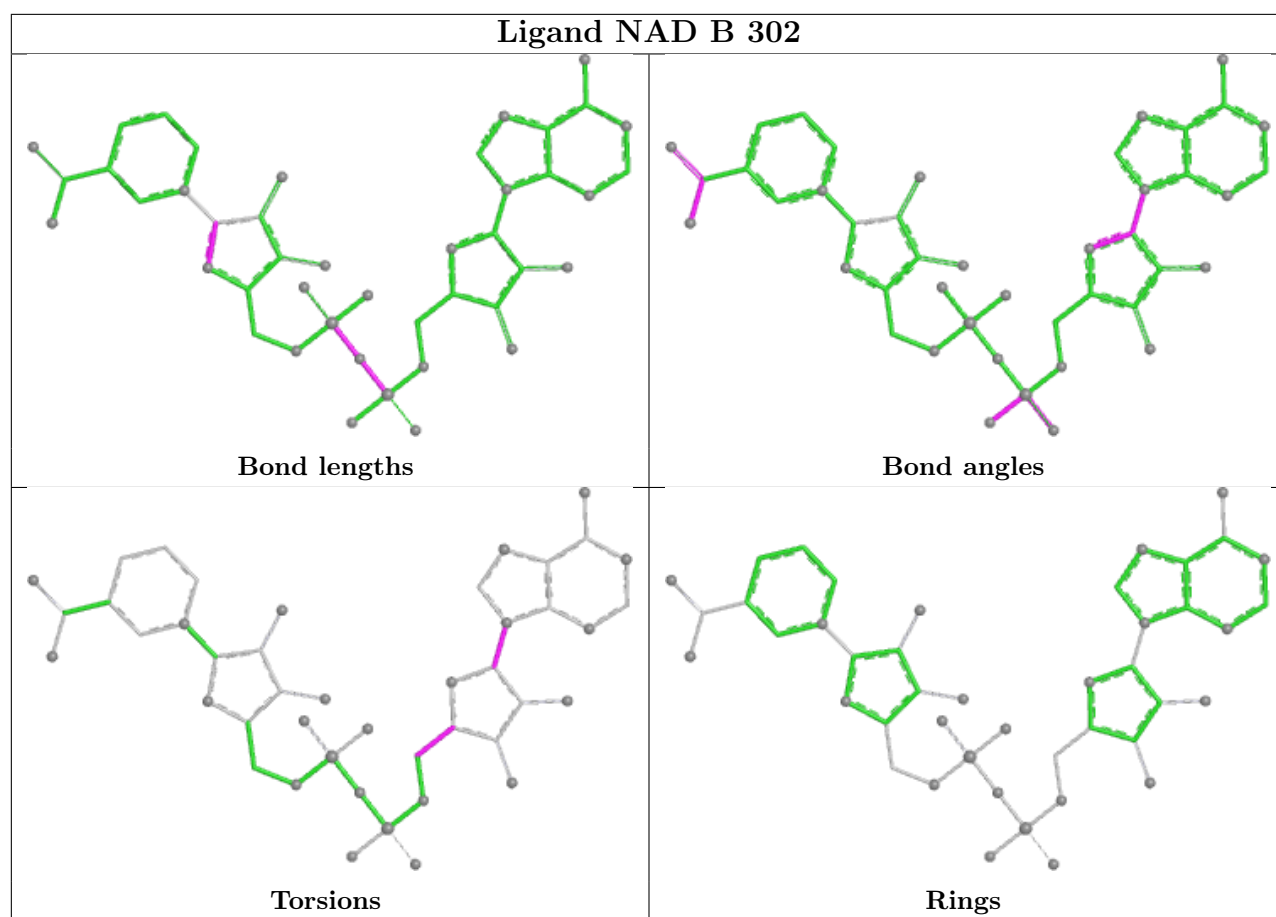
4 monomers are involved in 4 short contacts:

Mol	Chain	Res	Type	Clashes	Symm-Clashes
3	D	301	NAD	1	0
3	E	303	NAD	1	0
3	B	302	NAD	1	0
3	A	302	NAD	1	0

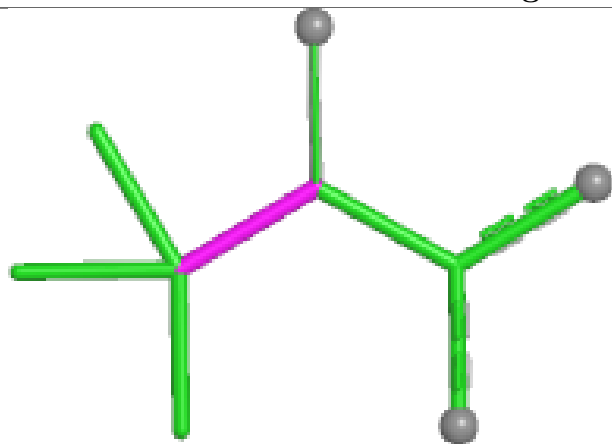
The following is a two-dimensional graphical depiction of Mogul quality analysis of bond lengths, bond angles, torsion angles, and ring geometry for all instances of the Ligand of Interest. In addition, ligands with molecular weight > 250 and outliers as shown on the validation Tables will also be included. For torsion angles, if less than 5% of the Mogul distribution of torsion angles is within 10 degrees of the torsion angle in question, then that torsion angle is considered an outlier. Any bond that is central to one or more torsion angles identified as an outlier by Mogul will be highlighted in the graph. For rings, the root-mean-square deviation (RMSD) between the ring in question and similar rings identified by Mogul is calculated over all ring torsion angles. If the average RMSD is greater than 60 degrees and the minimal RMSD between the ring in question and any Mogul-identified rings is also greater than 60 degrees, then that ring is considered an outlier. The outliers are highlighted in purple. The color gray indicates Mogul did not find sufficient equivalents in the CSD to analyse the geometry.



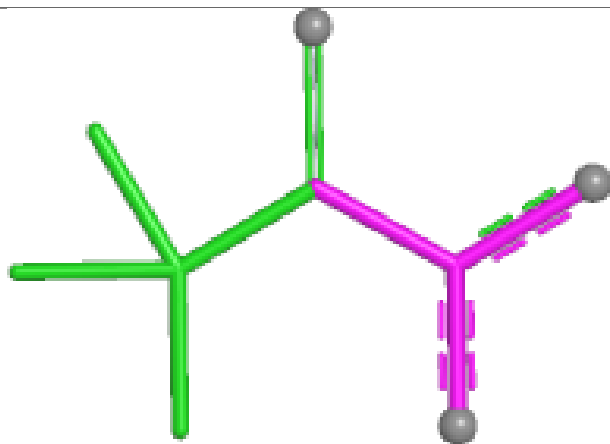




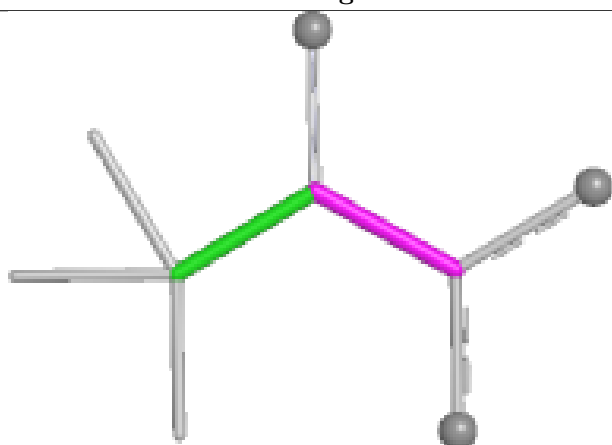
## Ligand G8I E 301



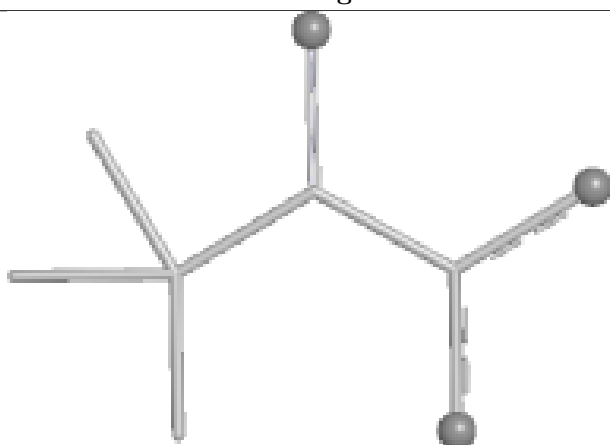
Bond lengths



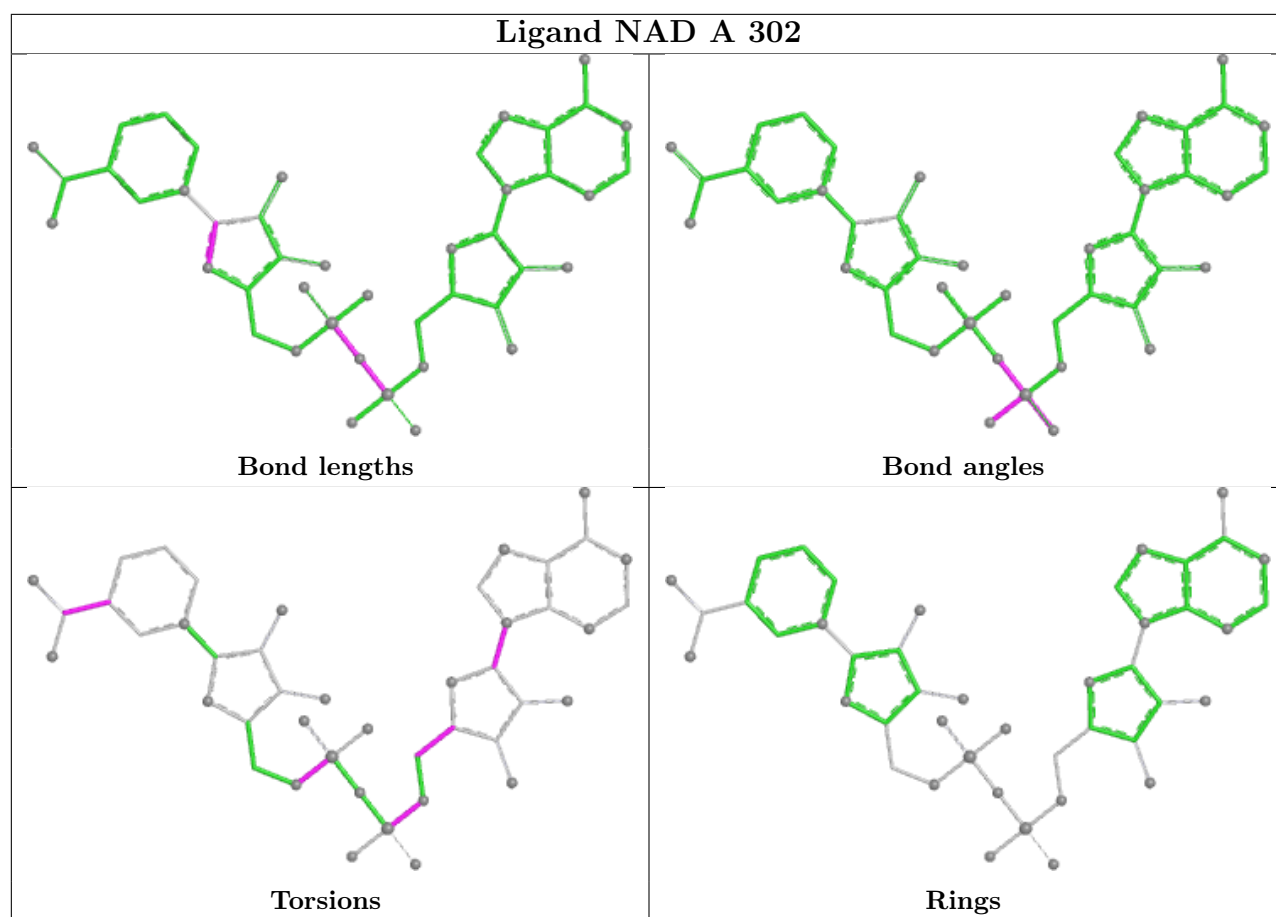
Bond angles



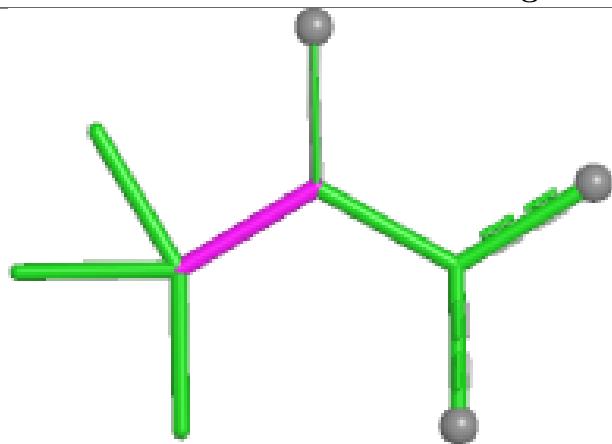
Torsions



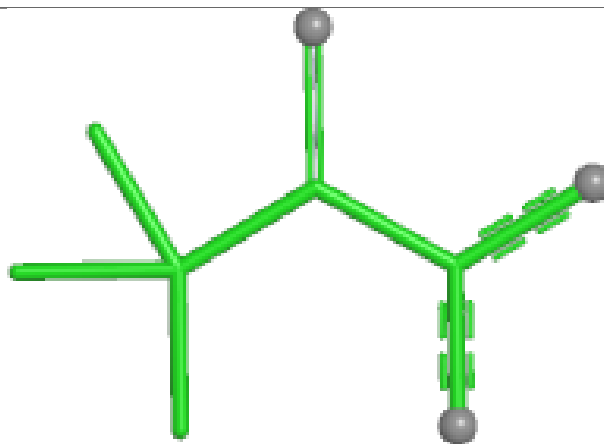
Rings



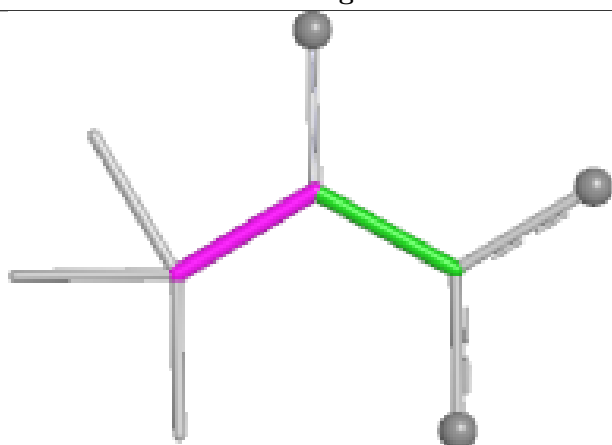
## Ligand G8I B 301



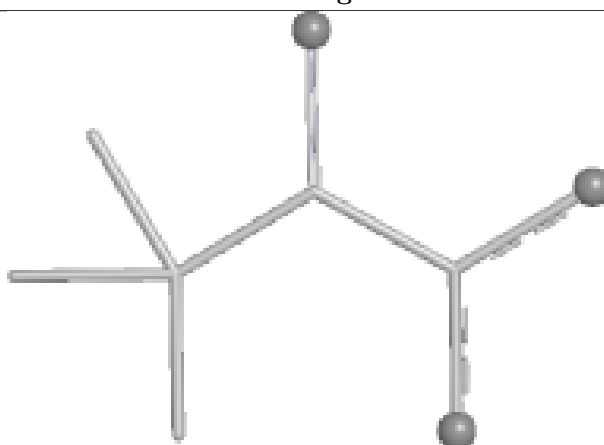
Bond lengths



Bond angles

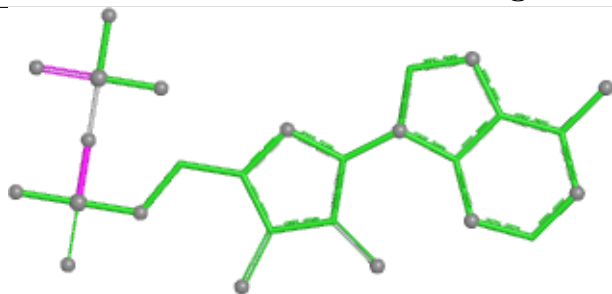


Torsions

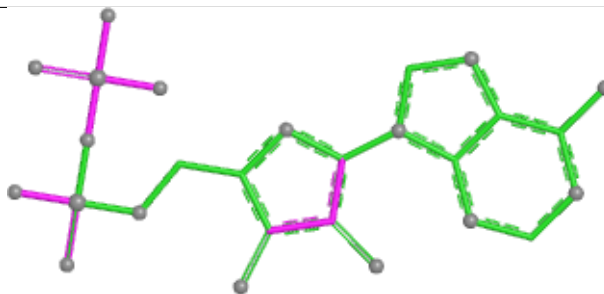


Rings

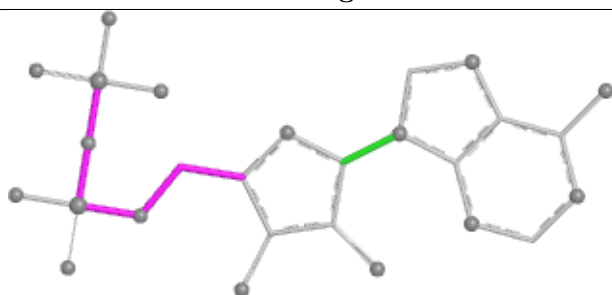
## Ligand NAD C 301



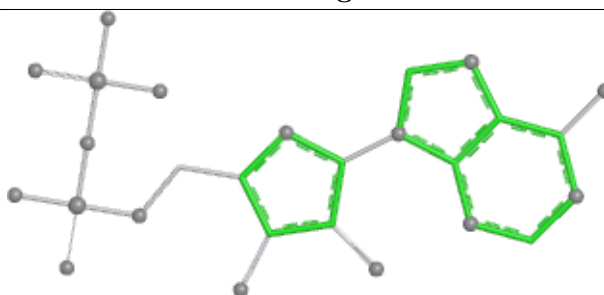
Bond lengths



Bond angles



Torsions



Rings

## 5.7 Other polymers [i](#)

There are no such residues in this entry.

## 5.8 Polymer linkage issues [i](#)

There are no chain breaks in this entry.



## 6 Fit of model and data [i](#)

### 6.1 Protein, DNA and RNA chains [i](#)

In the following table, the column labelled ‘#RSRZ> 2’ contains the number (and percentage) of RSRZ outliers, followed by percent RSRZ outliers for the chain as percentile scores relative to all X-ray entries and entries of similar resolution. The OWAB column contains the minimum, median, 95<sup>th</sup> percentile and maximum values of the occupancy-weighted average B-factor per residue. The column labelled ‘Q< 0.9’ lists the number of (and percentage) of residues with an average occupancy less than 0.9.

Mol	Chain	Analysed	<RSRZ>	#RSRZ>2		OWAB(Å <sup>2</sup> )	Q<0.9
1	A	273/316 (86%)	0.52	19 (6%)	22 17	26, 49, 103, 141	0
1	B	273/316 (86%)	0.41	9 (3%)	49 40	22, 52, 91, 115	0
1	C	269/316 (85%)	1.58	86 (31%)	1 0	44, 83, 120, 135	0
1	D	248/316 (78%)	2.16	115 (46%)	0 0	48, 82, 149, 186	0
1	E	273/316 (86%)	0.31	15 (5%)	30 24	19, 47, 82, 117	0
All	All	1336/1580 (84%)	0.97	244 (18%)	3 2	19, 62, 119, 186	0

The worst 5 of 244 RSRZ outliers are listed below:

Mol	Chain	Res	Type	RSRZ
1	D	90	HIS	9.1
1	D	60	VAL	6.6
1	D	6	ILE	6.5
1	D	42	VAL	6.2
1	D	52	LEU	6.2

### 6.2 Non-standard residues in protein, DNA, RNA chains [i](#)

There are no non-standard protein/DNA/RNA residues in this entry.

### 6.3 Carbohydrates [i](#)

There are no oligosaccharides in this entry.

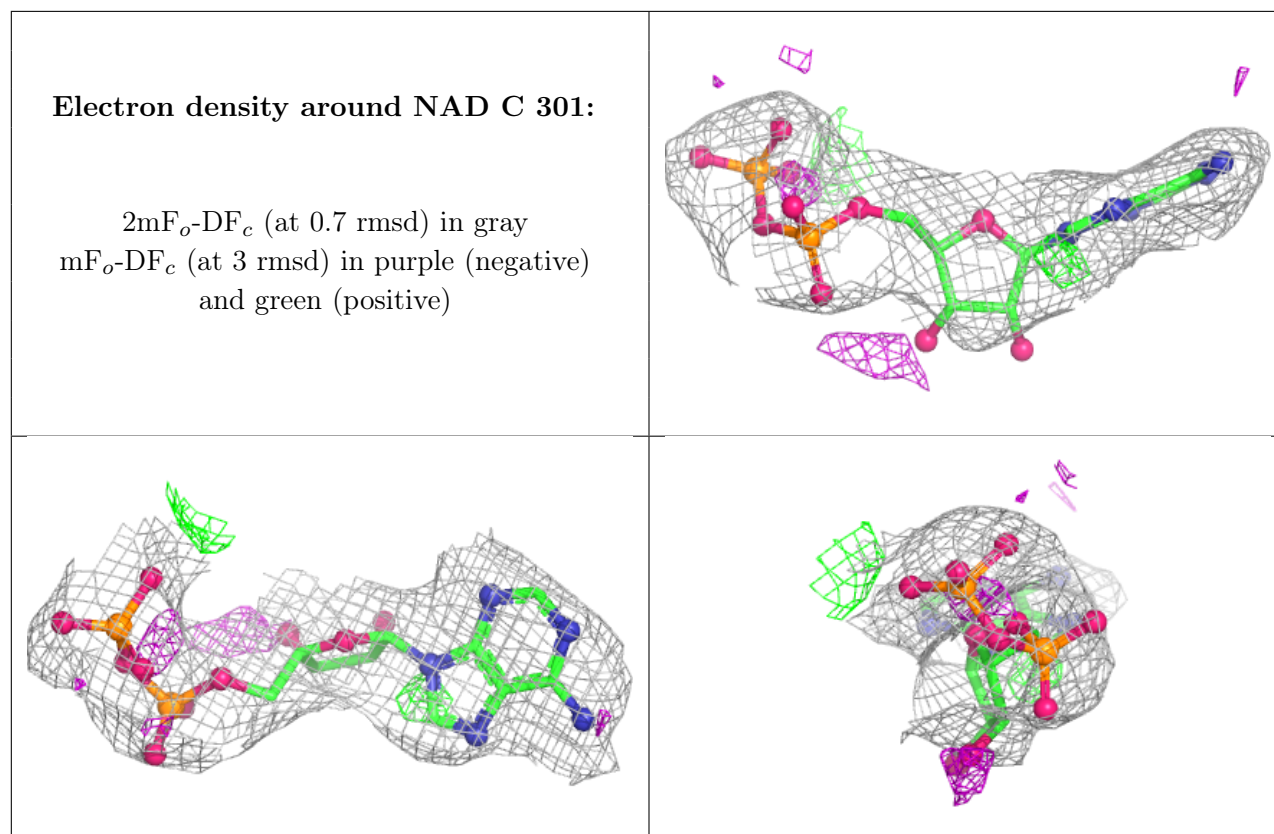
### 6.4 Ligands [i](#)

In the following table, the Atoms column lists the number of modelled atoms in the group and the number defined in the chemical component dictionary. The B-factors column lists the minimum,

median, 95<sup>th</sup> percentile and maximum values of B factors of atoms in the group. The column labelled 'Q< 0.9' lists the number of atoms with occupancy less than 0.9.

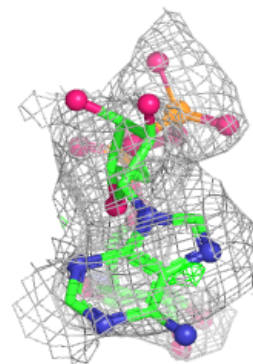
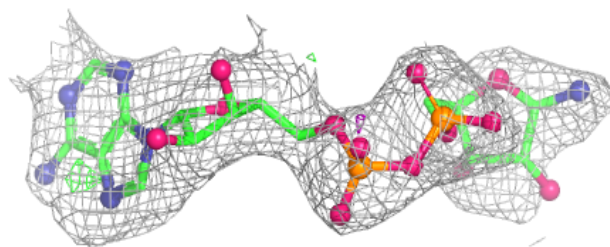
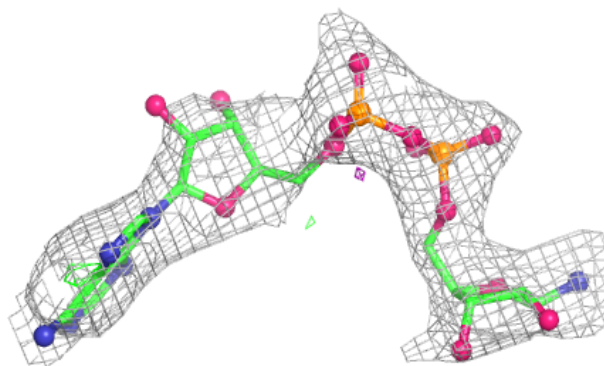
Mol	Type	Chain	Res	Atoms	RSCC	RSR	B-factors(Å <sup>2</sup> )	Q<0.9
3	NAD	C	301	27/44	0.73	0.16	73,91,106,106	0
3	NAD	D	301	36/44	0.75	0.18	76,104,115,117	36
2	SO4	E	302	5/5	0.82	0.12	78,83,92,94	5
3	NAD	B	302	44/44	0.84	0.13	44,59,72,76	44
3	NAD	A	302	44/44	0.86	0.15	44,65,78,87	44
2	SO4	A	301	5/5	0.90	0.12	35,36,41,45	5
3	NAD	E	303	44/44	0.90	0.11	41,55,64,66	44
4	G8I	B	301	9/9	0.91	0.12	38,41,48,49	0
4	G8I	E	301	9/9	0.91	0.13	33,36,39,42	0

The following is a graphical depiction of the model fit to experimental electron density of all instances of the Ligand of Interest. In addition, ligands with molecular weight > 250 and outliers as shown on the geometry validation Tables will also be included. Each fit is shown from different orientation to approximate a three-dimensional view.

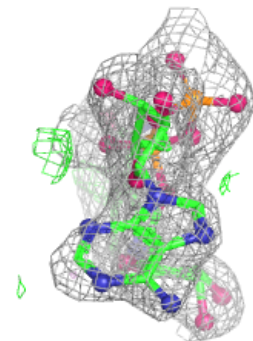
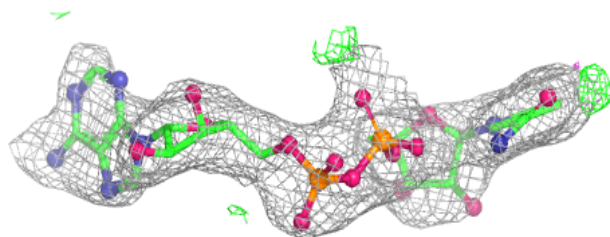
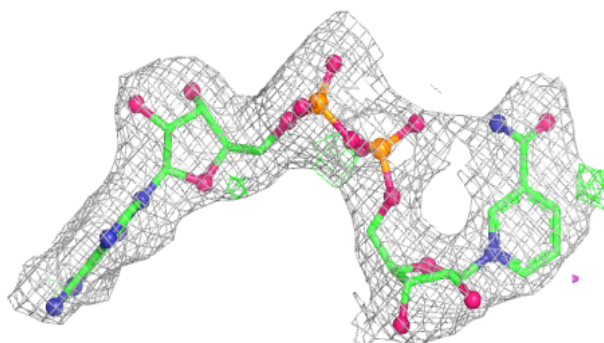


**Electron density around NAD D 301:**

$2mF_o-DF_c$  (at 0.7 rmsd) in gray  
 $mF_o-DF_c$  (at 3 rmsd) in purple (negative)  
and green (positive)

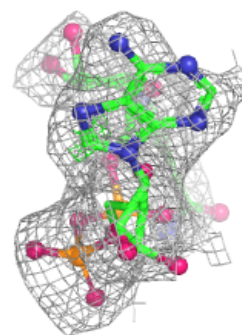
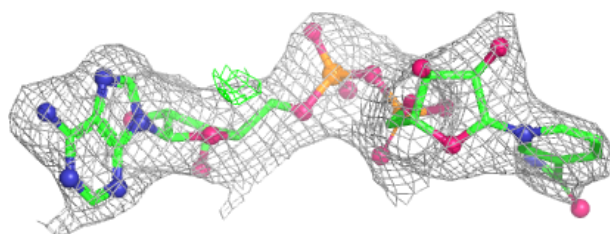
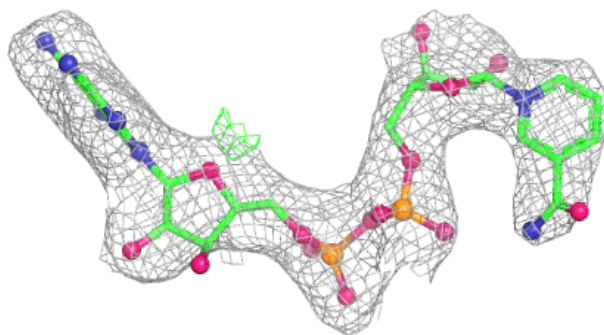
**Electron density around NAD B 302:**

$2mF_o-DF_c$  (at 0.7 rmsd) in gray  
 $mF_o-DF_c$  (at 3 rmsd) in purple (negative)  
and green (positive)

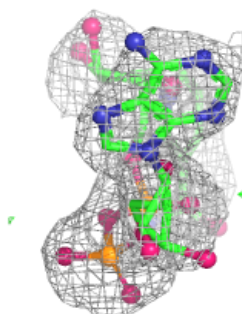
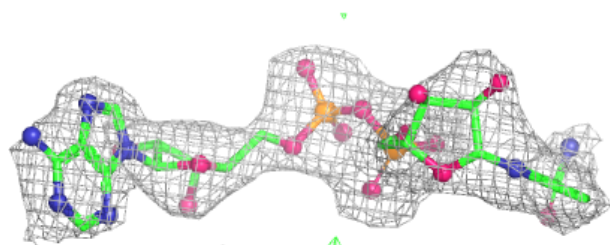
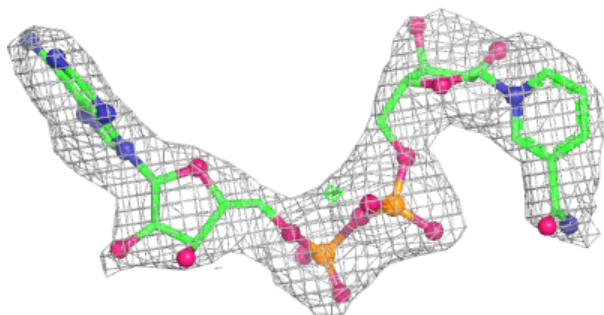


**Electron density around NAD A 302:**

$2mF_o-DF_c$  (at 0.7 rmsd) in gray  
 $mF_o-DF_c$  (at 3 rmsd) in purple (negative)  
and green (positive)

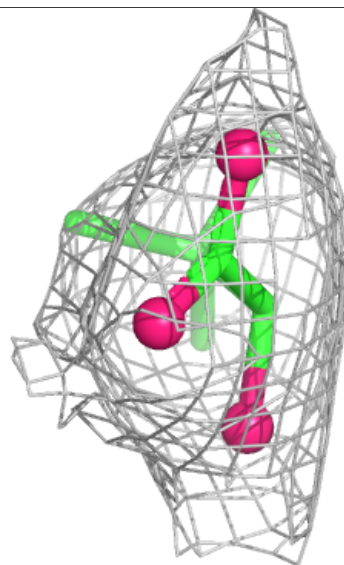
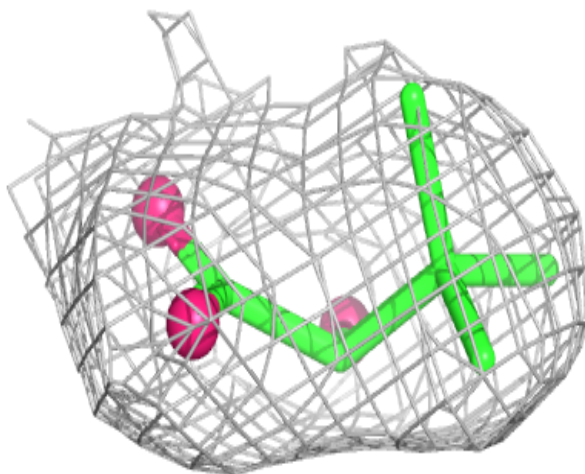
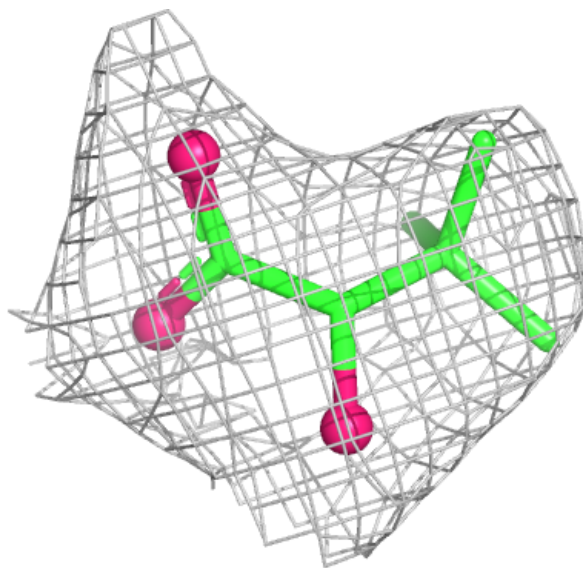
**Electron density around NAD E 303:**

$2mF_o-DF_c$  (at 0.7 rmsd) in gray  
 $mF_o-DF_c$  (at 3 rmsd) in purple (negative)  
and green (positive)



**Electron density around G8I B 301:**

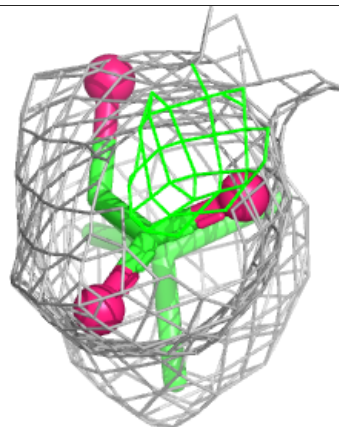
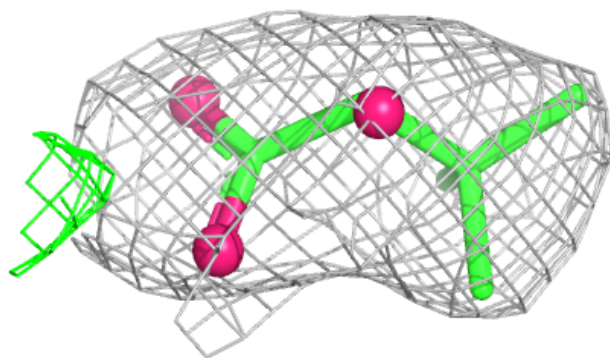
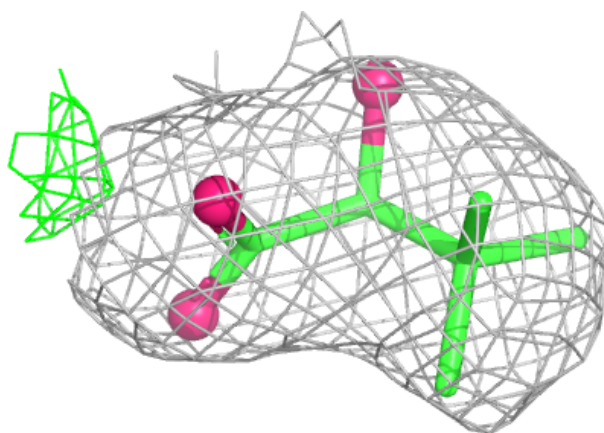
$2mF_o-DF_c$  (at 0.7 rmsd) in gray  
 $mF_o-DF_c$  (at 3 rmsd) in purple (negative)  
and green (positive)





**Electron density around G8I E 301:**

$2mF_o-DF_c$  (at 0.7 rmsd) in gray  
 $mF_o-DF_c$  (at 3 rmsd) in purple (negative)  
and green (positive)



## 6.5 Other polymers [i](#)

There are no such residues in this entry.