



# Full wwPDB X-ray Structure Validation Report ⓘ

Oct 7, 2023 – 05:56 PM EDT

PDB ID : 4Q6R  
Title : Crystal structure of human sphingosine-1-phosphate lyase in complex with inhibitor 6-[(2R)-4-(4-benzyl-7-chlorophthalazin-1-yl)-2-methylpiperazin-1-yl]pyridine-3-carbonitrile  
Authors : Srinivas, H.  
Deposited on : 2014-04-23  
Resolution : 2.40 Å(reported)

This is a Full wwPDB X-ray Structure Validation Report for a publicly released PDB entry.

We welcome your comments at [validation@mail.wwpdb.org](mailto:validation@mail.wwpdb.org)

A user guide is available at

<https://www.wwpdb.org/validation/2017/XrayValidationReportHelp>

with specific help available everywhere you see the ⓘ symbol.

The types of validation reports are described at

<http://www.wwpdb.org/validation/2017/FAQs#types>.

---

The following versions of software and data (see [references ⓘ](#)) were used in the production of this report:

MolProbity : 4.02b-467  
Mogul : 1.8.5 (274361), CSD as541be (2020)  
Xtrriage (Phenix) : 1.13  
EDS : 2.35.1  
buster-report : 1.1.7 (2018)  
Percentile statistics : 20191225.v01 (using entries in the PDB archive December 25th 2019)  
Refmac : 5.8.0158  
CCP4 : 7.0.044 (Gargrove)  
Ideal geometry (proteins) : Engh & Huber (2001)  
Ideal geometry (DNA, RNA) : Parkinson et al. (1996)  
Validation Pipeline (wwPDB-VP) : 2.35.1

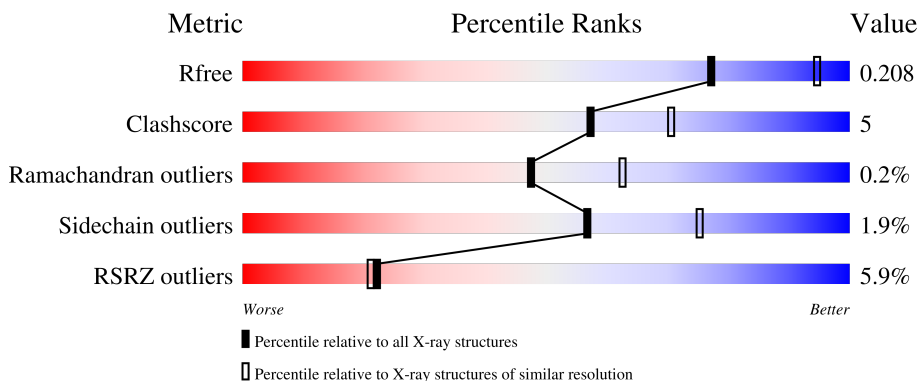
# 1 Overall quality at a glance

The following experimental techniques were used to determine the structure:

*X-RAY DIFFRACTION*

The reported resolution of this entry is 2.40 Å.

Percentile scores (ranging between 0-100) for global validation metrics of the entry are shown in the following graphic. The table shows the number of entries on which the scores are based.



Metric	Whole archive (#Entries)	Similar resolution (#Entries, resolution range(Å))
$R_{free}$	130704	3907 (2.40-2.40)
Clashscore	141614	4398 (2.40-2.40)
Ramachandran outliers	138981	4318 (2.40-2.40)
Sidechain outliers	138945	4319 (2.40-2.40)
RSRZ outliers	127900	3811 (2.40-2.40)

The table below summarises the geometric issues observed across the polymeric chains and their fit to the electron density. The red, orange, yellow and green segments of the lower bar indicate the fraction of residues that contain outliers for  $\geq 3$ , 2, 1 and 0 types of geometric quality criteria respectively. A grey segment represents the fraction of residues that are not modelled. The numeric value for each fraction is indicated below the corresponding segment, with a dot representing fractions  $\leq 5\%$ . The upper red bar (where present) indicates the fraction of residues that have poor fit to the electron density. The numeric value is given above the bar.

Mol	Chain	Length	Quality of chain
1	A	511	
1	B	511	

The following table lists non-polymeric compounds, carbohydrate monomers and non-standard residues in protein, DNA, RNA chains that are outliers for geometric or electron-density-fit criteria:

Mol	Type	Chain	Res	Chirality	Geometry	Clashes	Electron density
2	SIN	A	901	-	X	-	-

## 2 Entry composition

There are 6 unique types of molecules in this entry. The entry contains 7336 atoms, of which 0 are hydrogens and 0 are deuteriums.

In the tables below, the ZeroOcc column contains the number of atoms modelled with zero occupancy, the AltConf column contains the number of residues with at least one atom in alternate conformation and the Trace column contains the number of residues modelled with at most 2 atoms.

- Molecule 1 is a protein called Sphingosine-1-phosphate lyase 1.

Mol	Chain	Residues	Atoms						ZeroOcc	AltConf	Trace
			Total	C	N	O	P	S			
1	A	443	3449	2214	581	631	1	22	0	0	0
1	B	444	3458	2220	583	632	1	22	0	0	0

There are 8 discrepancies between the modelled and reference sequences:

Chain	Residue	Modelled	Actual	Comment	Reference
A	58	GLY	-	expression tag	UNP O95470
A	59	PRO	-	expression tag	UNP O95470
A	60	GLY	-	expression tag	UNP O95470
A	61	SER	-	expression tag	UNP O95470
B	58	GLY	-	expression tag	UNP O95470
B	59	PRO	-	expression tag	UNP O95470
B	60	GLY	-	expression tag	UNP O95470
B	61	SER	-	expression tag	UNP O95470

- Molecule 2 is SUCCINIC ACID (three-letter code: SIN) (formula: C<sub>4</sub>H<sub>6</sub>O<sub>4</sub>).



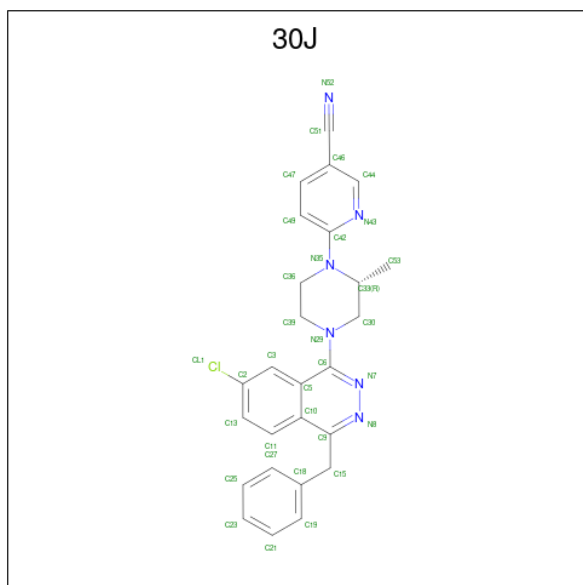
Mol	Chain	Residues	Atoms			ZeroOcc	AltConf
			Total	C	O		
2	A	1	8	4	4	0	0

- Molecule 3 is GLYCEROL (three-letter code: GOL) (formula:  $C_3H_8O_3$ ).



Mol	Chain	Residues	Atoms			ZeroOcc	AltConf
			Total	C	O		
3	A	1	6	3	3	0	0

- Molecule 4 is 6-[(2R)-4-(4-benzyl-7-chlorophthalazin-1-yl)-2-methylpiperazin-1-yl]pyridine-3-carbonitrile (three-letter code: 30J) (formula:  $C_{26}H_{23}ClN_6$ ).



Mol	Chain	Residues	Atoms			ZeroOcc	AltConf	
			Total	C	Cl			N
4	A	1	33	26	1	6	0	0
4	B	1	33	26	1	6	0	0

- Molecule 5 is PHOSPHATE ION (three-letter code: PO4) (formula: O<sub>4</sub>P).



Mol	Chain	Residues	Atoms		ZeroOcc	AltConf	
			Total	O			P
5	B	1	5	4	1	0	0

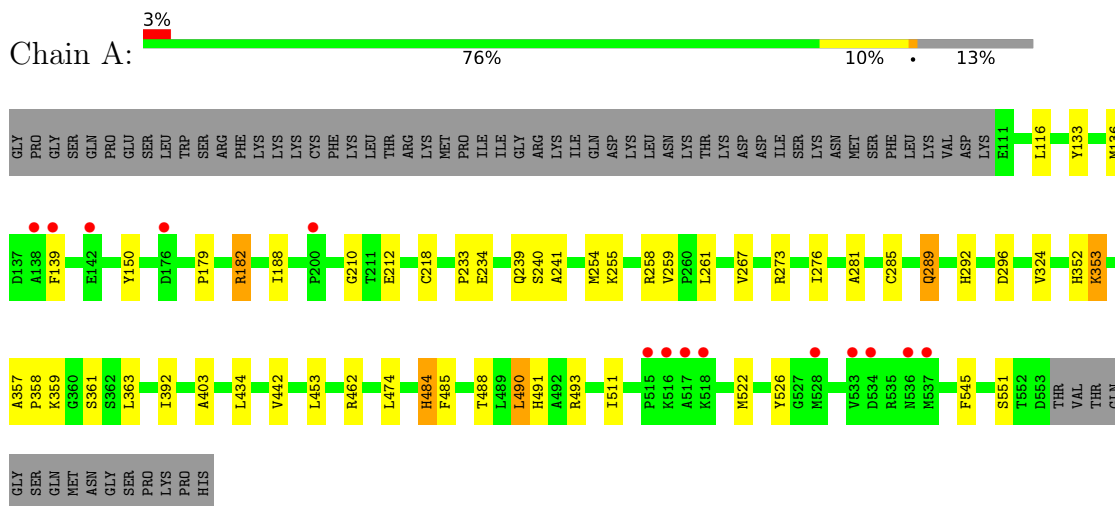
- Molecule 6 is water.

<b>Mol</b>	<b>Chain</b>	<b>Residues</b>	<b>Atoms</b>		<b>ZeroOcc</b>	<b>AltConf</b>
6	A	186	Total 186	O 186	0	0
6	B	158	Total 158	O 158	0	0

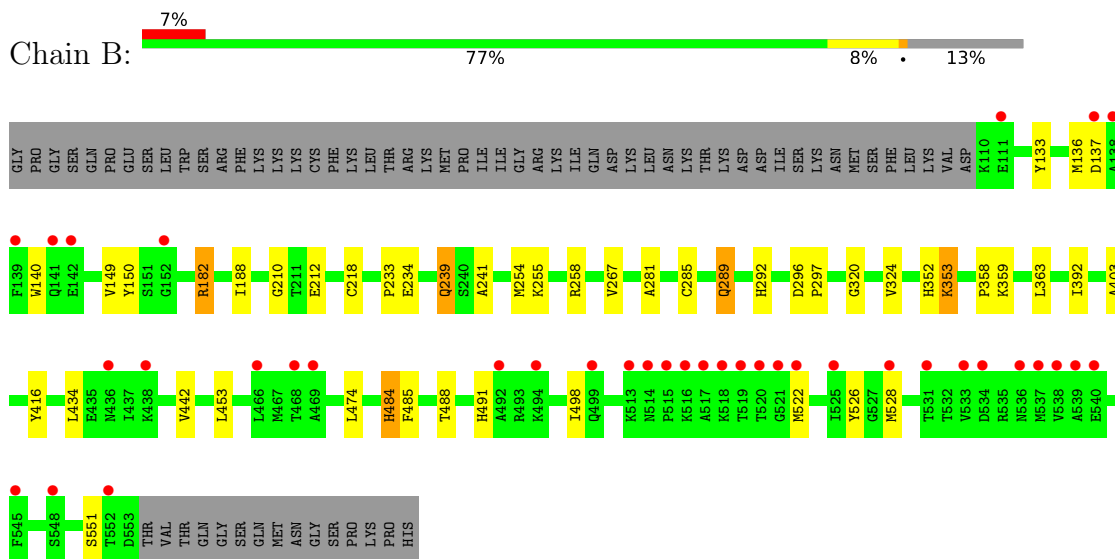
### 3 Residue-property plots

These plots are drawn for all protein, RNA, DNA and oligosaccharide chains in the entry. The first graphic for a chain summarises the proportions of the various outlier classes displayed in the second graphic. The second graphic shows the sequence view annotated by issues in geometry and electron density. Residues are color-coded according to the number of geometric quality criteria for which they contain at least one outlier: green = 0, yellow = 1, orange = 2 and red = 3 or more. A red dot above a residue indicates a poor fit to the electron density ( $RSRZ > 2$ ). Stretches of 2 or more consecutive residues without any outlier are shown as a green connector. Residues present in the sample, but not in the model, are shown in grey.

- Molecule 1: Sphingosine-1-phosphate lyase 1



- Molecule 1: Sphingosine-1-phosphate lyase 1





## 4 Data and refinement statistics i

Property	Value	Source
Space group	P 21 21 2	Depositor
Cell constants a, b, c, $\alpha$ , $\beta$ , $\gamma$	127.98Å 130.53Å 68.22Å 90.00° 90.00° 90.00°	Depositor
Resolution (Å)	19.66 – 2.40 24.67 – 2.40	Depositor EDS
% Data completeness (in resolution range)	100.0 (19.66-2.40) 100.0 (24.67-2.40)	Depositor EDS
$R_{merge}$	(Not available)	Depositor
$R_{sym}$	(Not available)	Depositor
$\langle I/\sigma(I) \rangle$ <sup>1</sup>	3.48 (at 2.41Å)	Xtrriage
Refinement program	BUSTER 2.9.3	Depositor
R, $R_{free}$	0.178 , 0.206 0.182 , 0.208	Depositor DCC
$R_{free}$ test set	2272 reflections (5.00%)	wwPDB-VP
Wilson B-factor (Å <sup>2</sup> )	35.5	Xtrriage
Anisotropy	1.064	Xtrriage
Bulk solvent $k_{sol}$ (e/Å <sup>3</sup> ), $B_{sol}$ (Å <sup>2</sup> )	0.34 , 49.5	EDS
L-test for twinning <sup>2</sup>	$\langle  L  \rangle = 0.48$ , $\langle L^2 \rangle = 0.32$	Xtrriage
Estimated twinning fraction	0.010 for k,h,-l	Xtrriage
$F_o, F_c$ correlation	0.96	EDS
Total number of atoms	7336	wwPDB-VP
Average B, all atoms (Å <sup>2</sup> )	49.0	wwPDB-VP

Xtrriage's analysis on translational NCS is as follows: *The largest off-origin peak in the Patterson function is 3.67% of the height of the origin peak. No significant pseudotranslation is detected.*

<sup>1</sup>Intensities estimated from amplitudes.

<sup>2</sup>Theoretical values of  $\langle |L| \rangle$ ,  $\langle L^2 \rangle$  for acentric reflections are 0.5, 0.333 respectively for untwinned datasets, and 0.375, 0.2 for perfectly twinned datasets.

## 5 Model quality [i](#)

### 5.1 Standard geometry [i](#)

Bond lengths and bond angles in the following residue types are not validated in this section: SIN, PO4, 30J, GOL, LLP

The Z score for a bond length (or angle) is the number of standard deviations the observed value is removed from the expected value. A bond length (or angle) with  $|Z| > 5$  is considered an outlier worth inspection. RMSZ is the root-mean-square of all Z scores of the bond lengths (or angles).

Mol	Chain	Bond lengths		Bond angles	
		RMSZ	# Z  >5	RMSZ	# Z  >5
1	A	0.48	0/3505	0.65	0/4740
1	B	0.48	0/3514	0.64	0/4751
All	All	0.48	0/7019	0.65	0/9491

There are no bond length outliers.

There are no bond angle outliers.

There are no chirality outliers.

There are no planarity outliers.

### 5.2 Too-close contacts [i](#)

In the following table, the Non-H and H(model) columns list the number of non-hydrogen atoms and hydrogen atoms in the chain respectively. The H(added) column lists the number of hydrogen atoms added and optimized by MolProbity. The Clashes column lists the number of clashes within the asymmetric unit, whereas Symm-Clashes lists symmetry-related clashes.

Mol	Chain	Non-H	H(model)	H(added)	Clashes	Symm-Clashes
1	A	3449	0	3459	36	0
1	B	3458	0	3472	30	0
2	A	8	0	5	0	0
3	A	6	0	8	0	0
4	A	33	0	23	4	0
4	B	33	0	23	6	0
5	B	5	0	0	0	0
6	A	186	0	0	2	0
6	B	158	0	0	2	0
All	All	7336	0	6990	69	0

The all-atom clashscore is defined as the number of clashes found per 1000 atoms (including

hydrogen atoms). The all-atom clashscore for this structure is 5.

All (69) close contacts within the same asymmetric unit are listed below, sorted by their clash magnitude.

Atom-1	Atom-2	Interatomic distance (Å)	Clash overlap (Å)
4:A:903:30J:H17	4:A:903:30J:H1	1.28	1.15
1:A:361:SER:HB3	6:A:1182:HOH:O	1.56	1.05
4:A:903:30J:H17	4:A:903:30J:C3	2.00	0.91
1:A:545:PHE:CD2	4:B:602:30J:H23	2.25	0.71
4:A:903:30J:H1	4:A:903:30J:C30	2.17	0.70
1:A:289:GLN:HE22	1:A:292:HIS:HD2	1.39	0.70
1:B:289:GLN:HE22	1:B:292:HIS:HD2	1.41	0.66
1:A:234:GLU:HG2	1:A:255:LYS:HB3	1.77	0.66
1:B:488:THR:H	1:B:491:HIS:HD2	1.45	0.65
4:A:903:30J:C3	4:A:903:30J:C30	2.74	0.65
1:B:234:GLU:HG2	1:B:255:LYS:HB3	1.79	0.64
1:A:179:PRO:HD2	1:B:137:ASP:HA	1.84	0.59
1:A:210:GLY:HA3	1:A:353:LLP:H5'2	1.85	0.58
1:B:210:GLY:HA3	1:B:353:LLP:H5'2	1.84	0.58
1:B:212:GLU:HG3	1:B:392:ILE:HD12	1.86	0.58
1:A:488:THR:H	1:A:491:HIS:HD2	1.52	0.57
1:A:212:GLU:HG3	1:A:392:ILE:HD12	1.87	0.57
1:B:218:CYS:HB3	1:B:254:MET:HE3	1.86	0.56
1:A:490:LEU:HD23	1:A:493:ARG:NH2	2.21	0.56
1:A:488:THR:H	1:A:491:HIS:CD2	2.24	0.56
1:A:358:PRO:HG3	1:A:403:ALA:HB3	1.89	0.55
1:A:241:ALA:O	1:A:258:ARG:NH2	2.38	0.55
1:A:357:ALA:HB3	6:A:1182:HOH:O	2.07	0.55
1:B:358:PRO:HG3	1:B:403:ALA:HB3	1.89	0.54
1:B:241:ALA:O	1:B:258:ARG:NH2	2.38	0.53
1:A:545:PHE:CG	4:B:602:30J:H23	2.44	0.51
1:A:218:CYS:HB3	1:A:254:MET:HE3	1.91	0.51
1:A:289:GLN:HE22	1:A:292:HIS:CD2	2.25	0.50
1:B:133:TYR:O	1:B:136:MET:HG2	2.11	0.50
1:B:289:GLN:HE22	1:B:292:HIS:CD2	2.26	0.49
1:A:182:ARG:NH1	1:B:551:SER:O	2.45	0.49
1:B:488:THR:H	1:B:491:HIS:CD2	2.28	0.48
1:A:188:ILE:HG22	1:A:363:LEU:HD21	1.95	0.48
4:B:602:30J:H17	4:B:602:30J:C3	2.43	0.47
1:B:352:HIS:HD2	1:B:359:LYS:NZ	2.13	0.47
1:A:352:HIS:HD2	1:A:359:LYS:NZ	2.13	0.47
1:A:474:LEU:HD22	1:A:485:PHE:HD1	1.80	0.47
1:B:140:TRP:CE3	1:B:149:VAL:HG11	2.50	0.47

*Continued on next page...*

Continued from previous page...

Atom-1	Atom-2	Interatomic distance (Å)	Clash overlap (Å)
1:A:551:SER:O	1:B:182:ARG:NH1	2.48	0.46
1:A:484:HIS:C	1:A:484:HIS:CD2	2.89	0.46
1:A:133:TYR:O	1:A:136:MET:HG2	2.15	0.46
1:B:474:LEU:HD22	1:B:485:PHE:HD1	1.81	0.46
1:A:150:TYR:HA	1:A:488:THR:HB	1.97	0.46
1:B:188:ILE:HG22	1:B:363:LEU:HD21	1.97	0.46
1:B:434:LEU:HD13	1:B:453:LEU:HD21	1.98	0.46
1:A:233:PRO:HB3	1:A:281:ALA:HB2	1.98	0.45
1:B:484:HIS:C	1:B:484:HIS:CD2	2.90	0.45
4:B:602:30J:H17	4:B:602:30J:H1	1.97	0.45
1:B:498:ILE:HG12	6:B:718:HOH:O	2.16	0.44
1:B:233:PRO:HB3	1:B:281:ALA:HB2	1.99	0.44
1:B:210:GLY:HA3	1:B:353:LLP:C5'	2.48	0.44
1:B:239:GLN:HG3	6:B:826:HOH:O	2.18	0.44
1:A:116:LEU:HD21	1:B:416:TYR:HD2	1.83	0.44
1:A:522:MET:HG3	1:A:526:TYR:CE2	2.54	0.43
1:B:267:VAL:HG12	1:B:297:PRO:HD2	2.01	0.43
1:B:285:CYS:HB2	1:B:296:ASP:CB	2.48	0.43
1:A:240:SER:HB3	1:A:261:LEU:HD11	2.01	0.43
1:A:285:CYS:HB2	1:A:296:ASP:CB	2.49	0.42
1:B:474:LEU:HD22	1:B:485:PHE:CD1	2.54	0.42
1:A:273:ARG:HA	1:A:276:ILE:HD12	2.02	0.42
1:A:474:LEU:HD22	1:A:485:PHE:CD1	2.54	0.42
1:A:259:VAL:HG23	1:A:267:VAL:HG23	2.00	0.42
1:A:545:PHE:CD2	4:B:602:30J:C39	3.01	0.42
4:B:602:30J:H4	4:B:602:30J:H19	1.71	0.42
1:A:462:ARG:CZ	1:A:511:ILE:HG23	2.50	0.42
1:A:210:GLY:HA3	1:A:353:LLP:C5'	2.48	0.41
1:B:522:MET:HG3	1:B:526:TYR:CE2	2.54	0.41
1:A:434:LEU:HD13	1:A:453:LEU:HD21	2.02	0.41
1:B:150:TYR:HA	1:B:488:THR:HB	2.03	0.40

There are no symmetry-related clashes.

## 5.3 Torsion angles

### 5.3.1 Protein backbone

In the following table, the Percentiles column shows the percent Ramachandran outliers of the chain as a percentile score with respect to all X-ray entries followed by that with respect to entries of similar resolution.

The Analysed column shows the number of residues for which the backbone conformation was analysed, and the total number of residues.

Mol	Chain	Analysed	Favoured	Allowed	Outliers	Percentiles	
1	A	440/511 (86%)	429 (98%)	10 (2%)	1 (0%)	47	62
1	B	441/511 (86%)	429 (97%)	11 (2%)	1 (0%)	47	62
All	All	881/1022 (86%)	858 (97%)	21 (2%)	2 (0%)	47	62

All (2) Ramachandran outliers are listed below:

Mol	Chain	Res	Type
1	A	139	PHE
1	B	320	GLY

### 5.3.2 Protein sidechains [i](#)

In the following table, the Percentiles column shows the percent sidechain outliers of the chain as a percentile score with respect to all X-ray entries followed by that with respect to entries of similar resolution.

The Analysed column shows the number of residues for which the sidechain conformation was analysed, and the total number of residues.

Mol	Chain	Analysed	Rotameric	Outliers	Percentiles	
1	A	366/429 (85%)	359 (98%)	7 (2%)	57	75
1	B	367/429 (86%)	360 (98%)	7 (2%)	57	75
All	All	733/858 (85%)	719 (98%)	14 (2%)	57	75

All (14) residues with a non-rotameric sidechain are listed below:

Mol	Chain	Res	Type
1	A	182	ARG
1	A	239	GLN
1	A	289	GLN
1	A	324	VAL
1	A	442	VAL
1	A	484	HIS
1	A	490	LEU
1	B	182	ARG
1	B	239	GLN
1	B	289	GLN
1	B	324	VAL

*Continued on next page...*

*Continued from previous page...*

Mol	Chain	Res	Type
1	B	442	VAL
1	B	484	HIS
1	B	528	MET

Sometimes sidechains can be flipped to improve hydrogen bonding and reduce clashes. All (12) such sidechains are listed below:

Mol	Chain	Res	Type
1	A	292	HIS
1	A	352	HIS
1	A	383	GLN
1	A	422	GLN
1	A	475	ASN
1	A	478	GLN
1	A	491	HIS
1	B	292	HIS
1	B	352	HIS
1	B	422	GLN
1	B	475	ASN
1	B	491	HIS

### 5.3.3 RNA [i](#)

There are no RNA molecules in this entry.

## 5.4 Non-standard residues in protein, DNA, RNA chains [i](#)

2 non-standard protein/DNA/RNA residues are modelled in this entry.

In the following table, the Counts columns list the number of bonds (or angles) for which Mogul statistics could be retrieved, the number of bonds (or angles) that are observed in the model and the number of bonds (or angles) that are defined in the Chemical Component Dictionary. The Link column lists molecule types, if any, to which the group is linked. The Z score for a bond length (or angle) is the number of standard deviations the observed value is removed from the expected value. A bond length (or angle) with  $|Z| > 2$  is considered an outlier worth inspection. RMSZ is the root-mean-square of all Z scores of the bond lengths (or angles).

Mol	Type	Chain	Res	Link	Bond lengths			Bond angles		
					Counts	RMSZ	# $ Z  > 2$	Counts	RMSZ	# $ Z  > 2$
1	LLP	A	353	1	23,24,25	2.10	5 (21%)	25,32,34	1.45	4 (16%)
1	LLP	B	353	1	23,24,25	2.31	6 (26%)	25,32,34	1.57	6 (24%)

In the following table, the Chirals column lists the number of chiral outliers, the number of chiral centers analysed, the number of these observed in the model and the number defined in the Chemical Component Dictionary. Similar counts are reported in the Torsion and Rings columns. '-' means no outliers of that kind were identified.

Mol	Type	Chain	Res	Link	Chirals	Torsions	Rings
1	LLP	A	353	1	-	4/16/17/19	0/1/1/1
1	LLP	B	353	1	-	4/16/17/19	0/1/1/1

All (11) bond length outliers are listed below:

Mol	Chain	Res	Type	Atoms	Z	Observed(Å)	Ideal(Å)
1	B	353	LLP	C4'-NZ	7.29	1.51	1.27
1	A	353	LLP	C4'-NZ	6.79	1.50	1.27
1	B	353	LLP	C4-C4'	5.07	1.56	1.46
1	A	353	LLP	C4-C4'	4.17	1.54	1.46
1	B	353	LLP	C3-C2	3.62	1.44	1.40
1	A	353	LLP	C4-C5	2.97	1.45	1.42
1	B	353	LLP	C4-C3	2.94	1.45	1.40
1	B	353	LLP	C6-C5	2.93	1.43	1.37
1	A	353	LLP	C6-C5	2.83	1.43	1.37
1	B	353	LLP	C4-C5	2.56	1.45	1.42
1	A	353	LLP	C4-C3	2.51	1.44	1.40

All (10) bond angle outliers are listed below:

Mol	Chain	Res	Type	Atoms	Z	Observed(°)	Ideal(°)
1	A	353	LLP	CE-NZ-C4'	-3.87	107.01	118.90
1	B	353	LLP	CE-NZ-C4'	-3.87	107.02	118.90
1	B	353	LLP	OP4-P-OP1	-2.96	98.16	106.47
1	A	353	LLP	OP4-P-OP1	-2.34	99.90	106.47
1	A	353	LLP	C3-C4-C5	-2.27	116.52	118.26
1	A	353	LLP	OP3-P-OP4	2.24	112.69	106.73
1	B	353	LLP	C3-C4-C5	-2.21	116.57	118.26
1	B	353	LLP	C6-N1-C2	2.13	123.11	119.17
1	B	353	LLP	OP3-P-OP4	2.07	112.23	106.73
1	B	353	LLP	OP2-P-OP4	2.00	112.06	106.73

There are no chirality outliers.

All (8) torsion outliers are listed below:

Mol	Chain	Res	Type	Atoms
1	A	353	LLP	C4-C4'-NZ-CE

*Continued on next page...*

Continued from previous page...

Mol	Chain	Res	Type	Atoms
1	A	353	LLP	C6-C5-C5'-OP4
1	A	353	LLP	O-C-CA-CB
1	B	353	LLP	C4-C4'-NZ-CE
1	B	353	LLP	O-C-CA-CB
1	B	353	LLP	C6-C5-C5'-OP4
1	B	353	LLP	C3-C4-C4'-NZ
1	A	353	LLP	C3-C4-C4'-NZ

There are no ring outliers.

2 monomers are involved in 4 short contacts:

Mol	Chain	Res	Type	Clashes	Symm-Clashes
1	A	353	LLP	2	0
1	B	353	LLP	2	0

## 5.5 Carbohydrates [i](#)

There are no monosaccharides in this entry.

## 5.6 Ligand geometry [i](#)

5 ligands are modelled in this entry.

In the following table, the Counts columns list the number of bonds (or angles) for which Mogul statistics could be retrieved, the number of bonds (or angles) that are observed in the model and the number of bonds (or angles) that are defined in the Chemical Component Dictionary. The Link column lists molecule types, if any, to which the group is linked. The Z score for a bond length (or angle) is the number of standard deviations the observed value is removed from the expected value. A bond length (or angle) with  $|Z| > 2$  is considered an outlier worth inspection. RMSZ is the root-mean-square of all Z scores of the bond lengths (or angles).

Mol	Type	Chain	Res	Link	Bond lengths			Bond angles		
					Counts	RMSZ	# $ Z  > 2$	Counts	RMSZ	# $ Z  > 2$
5	PO4	B	601	-	4,4,4	2.22	1 (25%)	6,6,6	0.89	0
2	SIN	A	901	-	7,7,7	2.67	3 (42%)	8,8,8	2.18	3 (37%)
4	30J	A	903	-	36,37,37	1.44	5 (13%)	45,52,52	1.96	12 (26%)
4	30J	B	602	-	36,37,37	1.63	6 (16%)	45,52,52	1.71	10 (22%)
3	GOL	A	902	-	5,5,5	0.52	0	5,5,5	0.43	0

In the following table, the Chirals column lists the number of chiral outliers, the number of chiral



centers analysed, the number of these observed in the model and the number defined in the Chemical Component Dictionary. Similar counts are reported in the Torsion and Rings columns. '2' means no outliers of that kind were identified.

Mol	Type	Chain	Res	Link	Chirals	Torsions	Rings
4	30J	A	903	-	-	2/14/27/27	0/5/5/5
4	30J	B	602	-	-	2/14/27/27	0/5/5/5
3	GOL	A	902	-	-	2/4/4/4	-
2	SIN	A	901	-	-	4/5/5/5	-

All (15) bond length outliers are listed below:

Mol	Chain	Res	Type	Atoms	Z	Observed(Å)	Ideal(Å)
4	B	602	30J	C9-C10	-5.83	1.37	1.43
4	A	903	30J	C9-C10	-5.70	1.37	1.43
2	A	901	SIN	O3-C4	4.27	1.36	1.22
2	A	901	SIN	C3-C4	4.23	1.60	1.50
5	B	601	PO4	P-O1	3.43	1.58	1.50
4	B	602	30J	C10-C5	-3.25	1.37	1.43
4	A	903	30J	C33-N35	-2.75	1.43	1.47
4	B	602	30J	C6-C5	-2.56	1.38	1.43
4	B	602	30J	C39-N29	-2.48	1.42	1.46
4	A	903	30J	C10-C5	-2.34	1.39	1.43
2	A	901	SIN	O2-C1	2.30	1.38	1.30
4	B	602	30J	C9-N8	-2.24	1.29	1.32
4	A	903	30J	C6-C5	-2.23	1.38	1.43
4	B	602	30J	C3-C5	-2.16	1.37	1.42
4	A	903	30J	C3-C5	-2.15	1.37	1.42

All (25) bond angle outliers are listed below:

Mol	Chain	Res	Type	Atoms	Z	Observed(°)	Ideal(°)
4	B	602	30J	C5-C6-N7	-5.29	118.63	126.80
4	A	903	30J	C5-C6-N7	-4.89	119.25	126.80
4	A	903	30J	C11-C10-C9	-4.77	119.09	123.35
4	A	903	30J	C33-C30-N29	4.59	118.16	110.88
4	A	903	30J	C39-N29-C30	4.20	124.79	112.55
4	B	602	30J	C36-N35-C33	4.07	121.99	114.66
2	A	901	SIN	C3-C2-C1	3.89	121.97	113.60
4	B	602	30J	C9-N8-N7	3.27	122.82	120.03
4	A	903	30J	C9-N8-N7	3.24	122.80	120.03
2	A	901	SIN	O4-C4-O3	-3.17	115.39	123.30
4	B	602	30J	C39-N29-C30	3.13	121.65	112.55
4	A	903	30J	C36-N35-C33	3.10	120.24	114.66

*Continued on next page...*

*Continued from previous page...*

Mol	Chain	Res	Type	Atoms	Z	Observed(°)	Ideal(°)
2	A	901	SIN	O4-C4-C3	2.89	123.30	114.03
4	A	903	30J	C18-C15-C9	-2.76	106.00	112.86
4	B	602	30J	C11-C10-C9	-2.73	120.92	123.35
4	A	903	30J	C11-C10-C5	2.71	121.82	118.45
4	B	602	30J	C44-N43-C42	2.50	121.86	117.30
4	A	903	30J	C3-C5-C6	-2.45	122.36	124.94
4	A	903	30J	C44-N43-C42	2.42	121.72	117.30
4	B	602	30J	C46-C44-N43	-2.42	119.93	123.51
4	A	903	30J	C46-C44-N43	-2.36	120.01	123.51
4	B	602	30J	C3-C5-C6	-2.20	122.64	124.94
4	B	602	30J	C47-C46-C44	2.09	120.09	117.26
4	B	602	30J	C11-C13-C2	-2.01	116.88	119.21
4	A	903	30J	C47-C46-C44	2.00	119.97	117.26

There are no chirality outliers.

All (10) torsion outliers are listed below:

Mol	Chain	Res	Type	Atoms
3	A	902	GOL	O1-C1-C2-O2
3	A	902	GOL	O1-C1-C2-C3
4	B	602	30J	C5-C6-N29-C39
4	B	602	30J	N7-C6-N29-C39
4	A	903	30J	N7-C6-N29-C39
4	A	903	30J	C5-C6-N29-C39
2	A	901	SIN	C2-C3-C4-O3
2	A	901	SIN	C2-C3-C4-O4
2	A	901	SIN	O2-C1-C2-C3
2	A	901	SIN	O1-C1-C2-C3

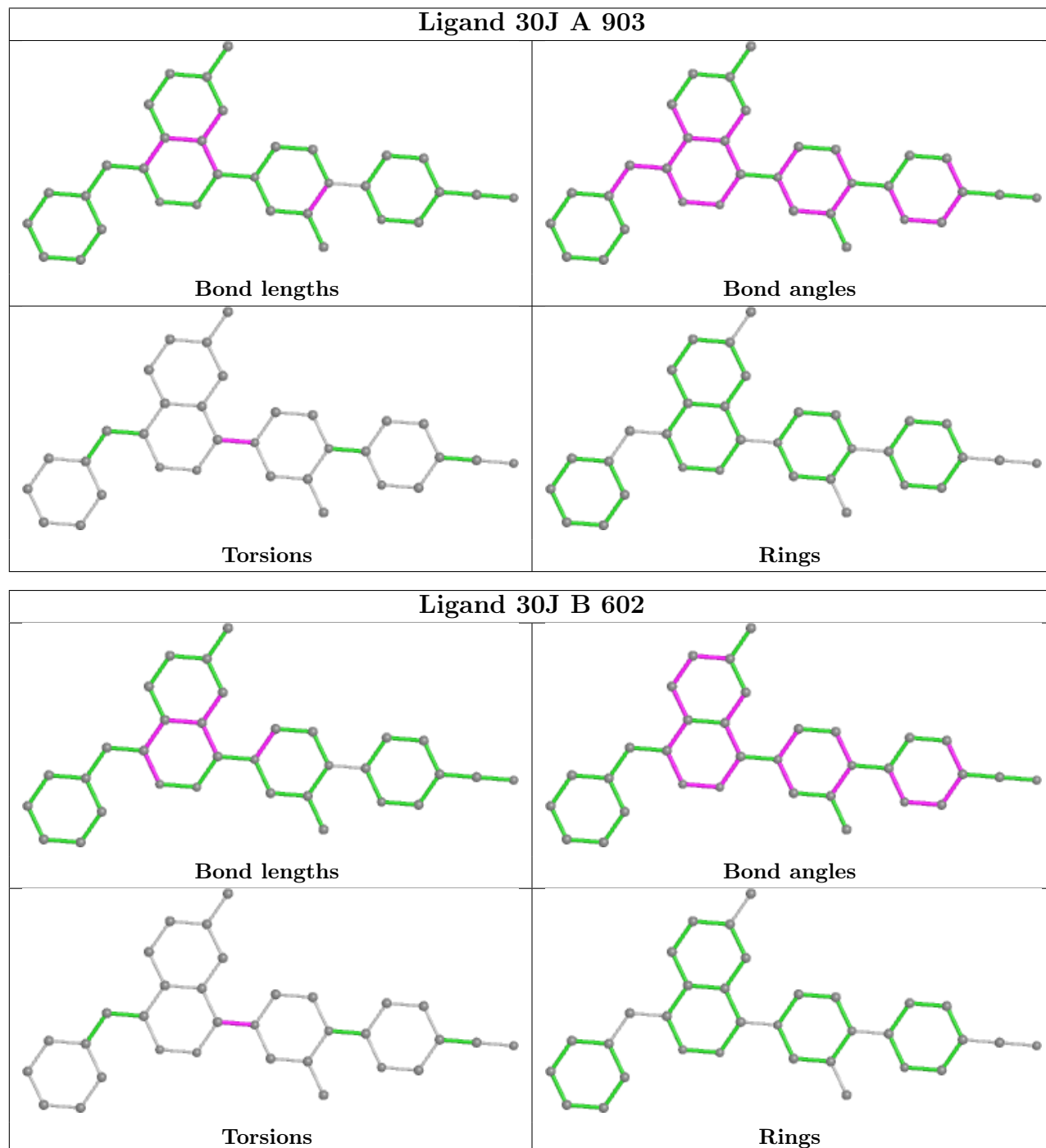
There are no ring outliers.

2 monomers are involved in 10 short contacts:

Mol	Chain	Res	Type	Clashes	Symm-Clashes
4	A	903	30J	4	0
4	B	602	30J	6	0

The following is a two-dimensional graphical depiction of Mogul quality analysis of bond lengths, bond angles, torsion angles, and ring geometry for all instances of the Ligand of Interest. In addition, ligands with molecular weight > 250 and outliers as shown on the validation Tables will also be included. For torsion angles, if less than 5% of the Mogul distribution of torsion angles is within 10 degrees of the torsion angle in question, then that torsion angle is considered an outlier. Any bond that is central to one or more torsion angles identified as an outlier by Mogul will be

highlighted in the graph. For rings, the root-mean-square deviation (RMSD) between the ring in question and similar rings identified by Mogul is calculated over all ring torsion angles. If the average RMSD is greater than 60 degrees and the minimal RMSD between the ring in question and any Mogul-identified rings is also greater than 60 degrees, then that ring is considered an outlier. The outliers are highlighted in purple. The color gray indicates Mogul did not find sufficient equivalents in the CSD to analyse the geometry.



## 5.7 Other polymers [i](#)

There are no such residues in this entry.

## 5.8 Polymer linkage issues [i](#)

There are no chain breaks in this entry.

## 6 Fit of model and data

### 6.1 Protein, DNA and RNA chains

In the following table, the column labelled ‘#RSRZ > 2’ contains the number (and percentage) of RSRZ outliers, followed by percent RSRZ outliers for the chain as percentile scores relative to all X-ray entries and entries of similar resolution. The OWAB column contains the minimum, median, 95<sup>th</sup> percentile and maximum values of the occupancy-weighted average B-factor per residue. The column labelled ‘Q < 0.9’ lists the number of (and percentage) of residues with an average occupancy less than 0.9.

Mol	Chain	Analysed	<RSRZ>	#RSRZ>2	OWAB(Å <sup>2</sup> )	Q<0.9
1	A	442/511 (86%)	-0.28	14 (3%) 47 46	31, 43, 64, 92	0
1	B	443/511 (86%)	0.12	38 (8%) 10 9	30, 44, 90, 114	0
All	All	885/1022 (86%)	-0.08	52 (5%) 22 21	30, 43, 82, 114	0

All (52) RSRZ outliers are listed below:

Mol	Chain	Res	Type	RSRZ
1	B	139	PHE	6.2
1	B	536	ASN	5.3
1	A	533	VAL	5.0
1	B	534	ASP	4.9
1	B	537	MET	4.7
1	B	533	VAL	4.5
1	B	469	ALA	4.1
1	B	531	THR	4.1
1	B	516	LYS	4.1
1	B	528	MET	4.0
1	B	518	LYS	3.9
1	A	536	ASN	3.8
1	B	138	ALA	3.6
1	A	138	ALA	3.4
1	A	537	MET	3.4
1	B	521	GLY	3.3
1	B	141	GLN	3.3
1	B	539	ALA	3.1
1	B	514	ASN	3.1
1	B	494	LYS	3.1
1	A	139	PHE	3.1
1	B	513	LYS	3.0
1	A	534	ASP	3.0
1	B	517	ALA	3.0

*Continued on next page...*

*Continued from previous page...*

Mol	Chain	Res	Type	RSRZ
1	B	111	GLU	2.8
1	B	522	MET	2.8
1	A	200	PRO	2.8
1	B	548	SER	2.6
1	B	540	GLU	2.6
1	B	438	LYS	2.6
1	A	142	GLU	2.5
1	B	492	ALA	2.5
1	A	516	LYS	2.5
1	A	515	PRO	2.5
1	B	552	THR	2.4
1	B	525	ILE	2.4
1	A	528	MET	2.3
1	A	176	ASP	2.3
1	B	519	THR	2.3
1	B	152	GLY	2.3
1	B	520	THR	2.3
1	B	515	PRO	2.2
1	B	538	VAL	2.2
1	A	517	ALA	2.2
1	B	137	ASP	2.2
1	B	142	GLU	2.2
1	B	436	ASN	2.2
1	A	518	LYS	2.1
1	B	545	PHE	2.1
1	B	468	THR	2.1
1	B	499	GLN	2.0
1	B	466	LEU	2.0

## 6.2 Non-standard residues in protein, DNA, RNA chains [i](#)

In the following table, the Atoms column lists the number of modelled atoms in the group and the number defined in the chemical component dictionary. The B-factors column lists the minimum, median, 95<sup>th</sup> percentile and maximum values of B factors of atoms in the group. The column labelled 'Q< 0.9' lists the number of atoms with occupancy less than 0.9.

Mol	Type	Chain	Res	Atoms	RSCC	RSR	B-factors(Å <sup>2</sup> )	Q<0.9
1	LLP	B	353	24/25	0.93	0.14	47,53,55,57	0
1	LLP	A	353	24/25	0.97	0.11	31,35,37,37	0

### 6.3 Carbohydrates [i](#)

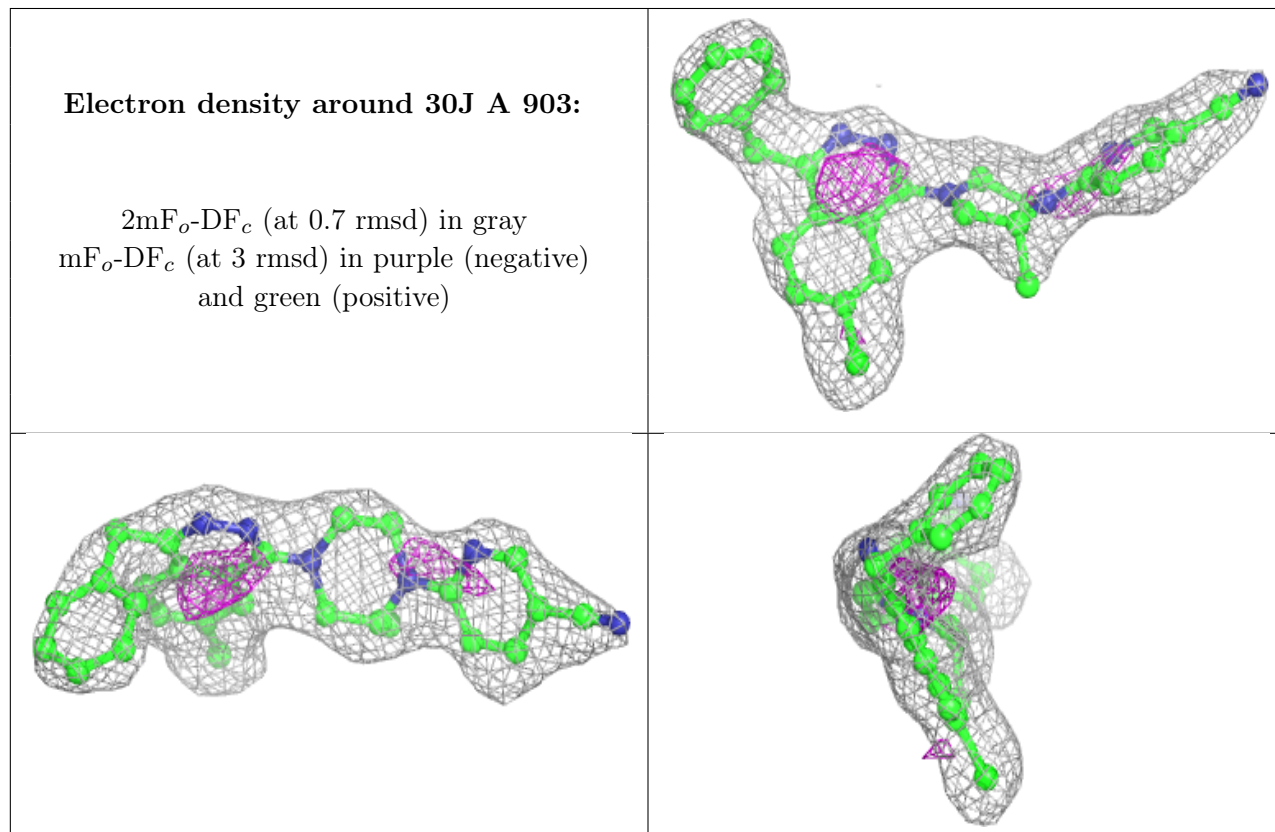
There are no monosaccharides in this entry.

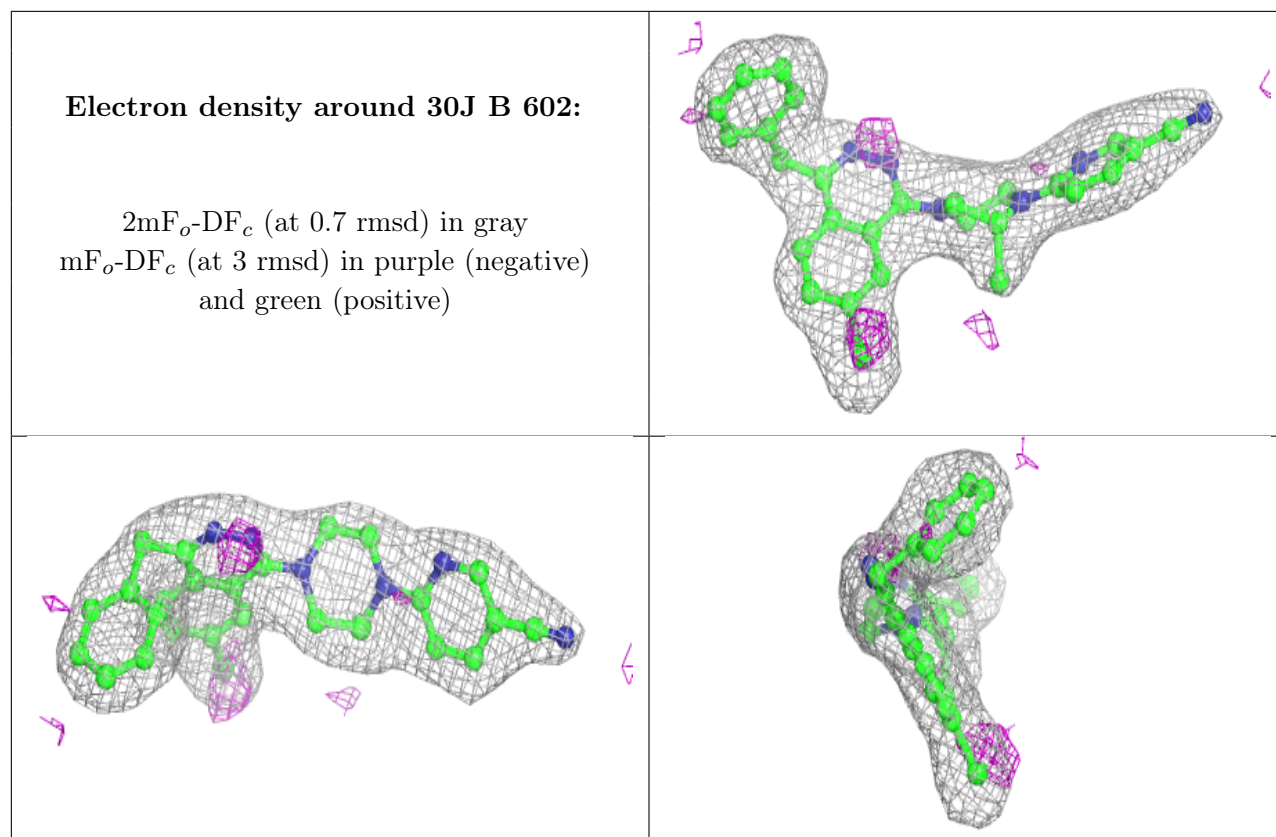
### 6.4 Ligands [i](#)

In the following table, the Atoms column lists the number of modelled atoms in the group and the number defined in the chemical component dictionary. The B-factors column lists the minimum, median, 95<sup>th</sup> percentile and maximum values of B factors of atoms in the group. The column labelled 'Q< 0.9' lists the number of atoms with occupancy less than 0.9.

Mol	Type	Chain	Res	Atoms	RSCC	RSR	B-factors(Å <sup>2</sup> )	Q<0.9
3	GOL	A	902	6/6	0.82	0.17	67,69,69,70	0
5	PO4	B	601	5/5	0.83	0.25	98,104,105,105	0
2	SIN	A	901	8/8	0.85	0.22	47,52,59,61	0
4	30J	A	903	33/33	0.91	0.24	58,64,70,72	0
4	30J	B	602	33/33	0.92	0.13	36,41,48,51	0

The following is a graphical depiction of the model fit to experimental electron density of all instances of the Ligand of Interest. In addition, ligands with molecular weight > 250 and outliers as shown on the geometry validation Tables will also be included. Each fit is shown from different orientation to approximate a three-dimensional view.





## 6.5 Other polymers [i](#)

There are no such residues in this entry.