



Full wwPDB X-ray Structure Validation Report ⓘ

Feb 4, 2024 – 04:49 AM EST

PDB ID : 1Q5D
Title : Epothilone B-bound Cytochrome P450epoK
Authors : Nagano, S.; Li, H.; Shimizu, H.; Nishida, C.; Ogura, H.; Ortiz de Montellano, P.R.; Poulos, T.L.
Deposited on : 2003-08-06
Resolution : 1.93 Å(reported)

This is a Full wwPDB X-ray Structure Validation Report for a publicly released PDB entry.

We welcome your comments at validation@mail.wwpdb.org

A user guide is available at

<https://www.wwpdb.org/validation/2017/XrayValidationReportHelp>

with specific help available everywhere you see the ⓘ symbol.

The types of validation reports are described at

<http://www.wwpdb.org/validation/2017/FAQs#types>.

The following versions of software and data (see [references ⓘ](#)) were used in the production of this report:

MolProbity : 4.02b-467
Mogul : 1.8.5 (274361), CSD as541be (2020)
Xtrriage (Phenix) : 1.13
EDS : 2.36
buster-report : 1.1.7 (2018)
Percentile statistics : 20191225.v01 (using entries in the PDB archive December 25th 2019)
Refmac : 5.8.0158
CCP4 : 7.0.044 (Gargrove)
Ideal geometry (proteins) : Engh & Huber (2001)
Ideal geometry (DNA, RNA) : Parkinson et al. (1996)
Validation Pipeline (wwPDB-VP) : 2.36

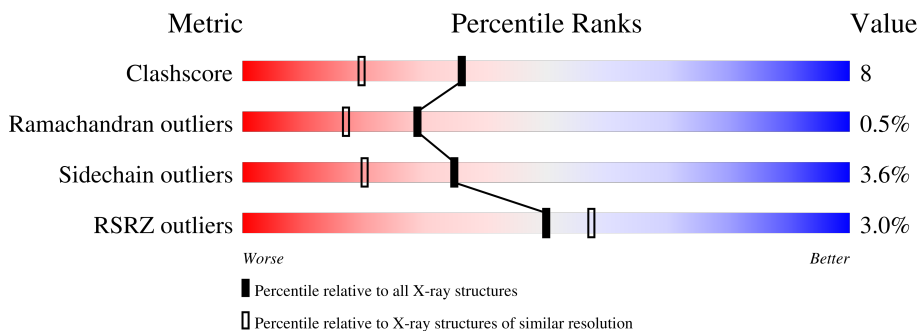
1 Overall quality at a glance

The following experimental techniques were used to determine the structure:

X-RAY DIFFRACTION

The reported resolution of this entry is 1.93 Å.

Percentile scores (ranging between 0-100) for global validation metrics of the entry are shown in the following graphic. The table shows the number of entries on which the scores are based.



Metric	Whole archive (#Entries)	Similar resolution (#Entries, resolution range(Å))
Clashscore	141614	1023 (1.94-1.94)
Ramachandran outliers	138981	1007 (1.94-1.94)
Sidechain outliers	138945	1007 (1.94-1.94)
RSRZ outliers	127900	4250 (1.96-1.92)

The table below summarises the geometric issues observed across the polymeric chains and their fit to the electron density. The red, orange, yellow and green segments of the lower bar indicate the fraction of residues that contain outliers for ≥ 3 , 2, 1 and 0 types of geometric quality criteria respectively. A grey segment represents the fraction of residues that are not modelled. The numeric value for each fraction is indicated below the corresponding segment, with a dot representing fractions $\leq 5\%$. The upper red bar (where present) indicates the fraction of residues that have poor fit to the electron density. The numeric value is given above the bar.

Mol	Chain	Length	Quality of chain
1	A	419	

2 Entry composition [i](#)

There are 4 unique types of molecules in this entry. The entry contains 3485 atoms, of which 0 are hydrogens and 0 are deuteriums.

In the tables below, the ZeroOcc column contains the number of atoms modelled with zero occupancy, the AltConf column contains the number of residues with at least one atom in alternate conformation and the Trace column contains the number of residues modelled with at most 2 atoms.

- Molecule 1 is a protein called P450 epoxidase.

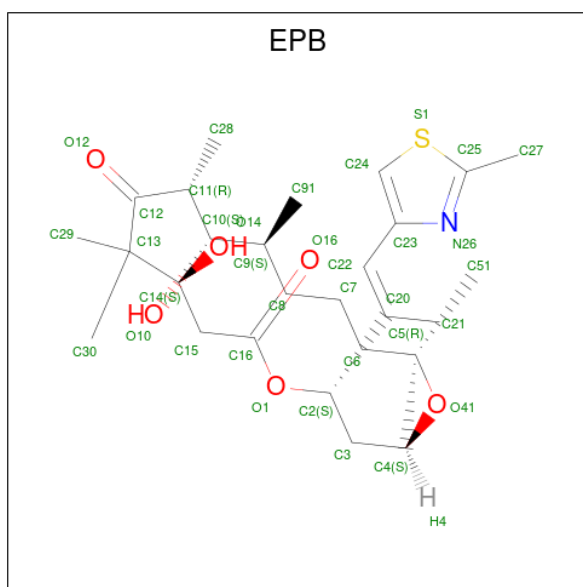
Mol	Chain	Residues	Atoms					ZeroOcc	AltConf	Trace
			Total	C	N	O	S			
1	A	401	3159	2008	555	587	9	0	0	0

- Molecule 2 is PROTOPORPHYRIN IX CONTAINING FE (three-letter code: HEM) (formula: $C_{34}H_{32}FeN_4O_4$).



Mol	Chain	Residues	Atoms					ZeroOcc	AltConf
			Total	C	Fe	N	O		
2	A	1	43	34	1	4	4	0	0

- Molecule 3 is 7,11-DIHYDROXY-8,8,10,12,16-PENTAMETHYL-3-[1-METHYL-2-(2-METHYL-THIAZOL-4-YL)VINYL]-4,17-DIOXABICYCLO[14.1.0]HEPTADECANE-5,9-DIONE (three-letter code: EPB) (formula: $C_{27}H_{41}NO_6S$).



Mol	Chain	Residues	Atoms					ZeroOcc	AltConf
			Total	C	N	O	S		
3	A	1	35	27	1	6	1	0	0

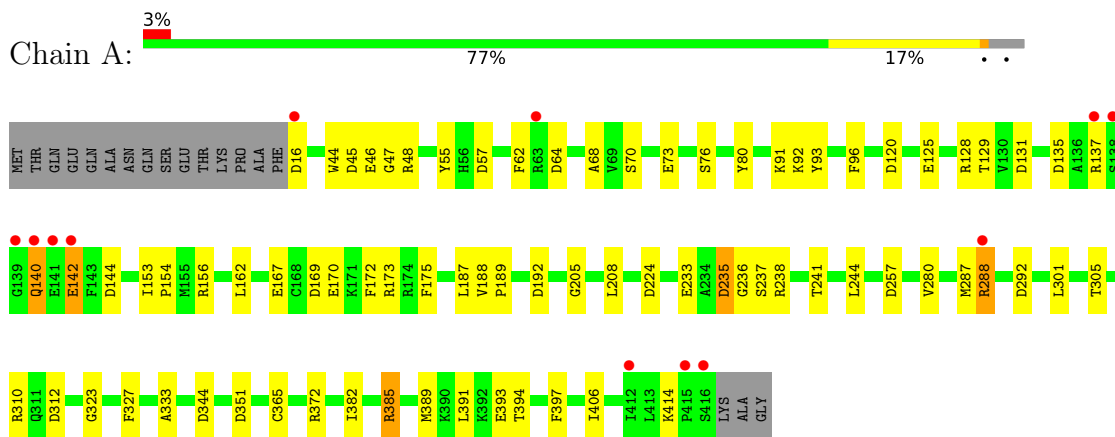
- Molecule 4 is water.

Mol	Chain	Residues	Atoms		ZeroOcc	AltConf
4	A	248	Total	O	0	0
			248	248		

3 Residue-property plots [i](#)

These plots are drawn for all protein, RNA, DNA and oligosaccharide chains in the entry. The first graphic for a chain summarises the proportions of the various outlier classes displayed in the second graphic. The second graphic shows the sequence view annotated by issues in geometry and electron density. Residues are color-coded according to the number of geometric quality criteria for which they contain at least one outlier: green = 0, yellow = 1, orange = 2 and red = 3 or more. A red dot above a residue indicates a poor fit to the electron density ($RSRZ > 2$). Stretches of 2 or more consecutive residues without any outlier are shown as a green connector. Residues present in the sample, but not in the model, are shown in grey.

- Molecule 1: P450 epoxidase



4 Data and refinement statistics

Property	Value	Source
Space group	P 43 2 2	Depositor
Cell constants a, b, c, α , β , γ	60.43Å 60.43Å 252.84Å 90.00° 90.00° 90.00°	Depositor
Resolution (Å)	50.00 – 1.93 49.11 – 1.93	Depositor EDS
% Data completeness (in resolution range)	93.9 (50.00-1.93) 93.9 (49.11-1.93)	Depositor EDS
R_{merge}	(Not available)	Depositor
R_{sym}	(Not available)	Depositor
$\langle I/\sigma(I) \rangle$ ¹	3.81 (at 1.94Å)	Xtrriage
Refinement program	REFMAC 5.1.24	Depositor
R, R_{free}	0.218 , 0.260 0.217 , (Not available)	Depositor DCC
R_{free} test set	No test flags present.	wwPDB-VP
Wilson B-factor (Å ²)	36.5	Xtrriage
Anisotropy	0.440	Xtrriage
Bulk solvent k_{sol} (e/Å ³), B_{sol} (Å ²)	0.36 , 42.4	EDS
L-test for twinning ²	$\langle L \rangle = 0.49$, $\langle L^2 \rangle = 0.33$	Xtrriage
Estimated twinning fraction	No twinning to report.	Xtrriage
F_o, F_c correlation	0.95	EDS
Total number of atoms	3485	wwPDB-VP
Average B, all atoms (Å ²)	38.0	wwPDB-VP

Xtrriage's analysis on translational NCS is as follows: *The largest off-origin peak in the Patterson function is 4.24% of the height of the origin peak. No significant pseudotranslation is detected.*

¹Intensities estimated from amplitudes.

²Theoretical values of $\langle |L| \rangle$, $\langle L^2 \rangle$ for acentric reflections are 0.5, 0.333 respectively for untwinned datasets, and 0.375, 0.2 for perfectly twinned datasets.

5 Model quality [i](#)

5.1 Standard geometry [i](#)

Bond lengths and bond angles in the following residue types are not validated in this section: EPB, HEM

The Z score for a bond length (or angle) is the number of standard deviations the observed value is removed from the expected value. A bond length (or angle) with $|Z| > 5$ is considered an outlier worth inspection. RMSZ is the root-mean-square of all Z scores of the bond lengths (or angles).

Mol	Chain	Bond lengths		Bond angles	
		RMSZ	# Z >5	RMSZ	# Z >5
1	A	0.42	0/3223	0.71	16/4368 (0.4%)

There are no bond length outliers.

All (16) bond angle outliers are listed below:

Mol	Chain	Res	Type	Atoms	Z	Observed(°)	Ideal(°)
1	A	45	ASP	CB-CG-OD2	7.17	124.76	118.30
1	A	312	ASP	CB-CG-OD2	6.60	124.24	118.30
1	A	192	ASP	CB-CG-OD2	6.52	124.17	118.30
1	A	57	ASP	CB-CG-OD2	6.15	123.83	118.30
1	A	169	ASP	CB-CG-OD2	6.12	123.81	118.30
1	A	257	ASP	CB-CG-OD2	6.10	123.79	118.30
1	A	64	ASP	CB-CG-OD2	5.93	123.63	118.30
1	A	144	ASP	CB-CG-OD2	5.56	123.30	118.30
1	A	16	ASP	CB-CG-OD2	5.52	123.27	118.30
1	A	135	ASP	CB-CG-OD2	5.35	123.11	118.30
1	A	344	ASP	CB-CG-OD2	5.32	123.09	118.30
1	A	292	ASP	CB-CG-OD2	5.32	123.09	118.30
1	A	235	ASP	CB-CG-OD2	5.28	123.05	118.30
1	A	351	ASP	CB-CG-OD2	5.28	123.05	118.30
1	A	224	ASP	CB-CG-OD2	5.22	123.00	118.30
1	A	120	ASP	CB-CG-OD2	5.16	122.94	118.30

There are no chirality outliers.

There are no planarity outliers.

5.2 Too-close contacts

In the following table, the Non-H and H(model) columns list the number of non-hydrogen atoms and hydrogen atoms in the chain respectively. The H(added) column lists the number of hydrogen atoms added and optimized by MolProbity. The Clashes column lists the number of clashes within the asymmetric unit, whereas Symm-Clashes lists symmetry-related clashes.

Mol	Chain	Non-H	H(model)	H(added)	Clashes	Symm-Clashes
1	A	3159	0	3177	46	0
2	A	43	0	30	4	0
3	A	35	0	40	6	0
4	A	248	0	0	6	0
All	All	3485	0	3247	52	0

The all-atom clashscore is defined as the number of clashes found per 1000 atoms (including hydrogen atoms). The all-atom clashscore for this structure is 8.

All (52) close contacts within the same asymmetric unit are listed below, sorted by their clash magnitude.

Atom-1	Atom-2	Interatomic distance (Å)	Clash overlap (Å)
1:A:187:LEU:HD12	1:A:188:VAL:HG13	1.54	0.90
1:A:131:ASP:OD1	1:A:385:ARG:NH2	2.22	0.73
1:A:172:PHE:CZ	1:A:208:LEU:HD22	2.24	0.72
1:A:288:ARG:HE	1:A:372:ARG:HD3	1.55	0.72
3:A:450:EPB:O41	4:A:451:HOH:O	2.09	0.70
1:A:125:GLU:OE2	1:A:128:ARG:NH1	2.28	0.67
1:A:137:ARG:O	1:A:140:GLN:HG2	1.96	0.64
1:A:382:ILE:HG12	1:A:389:MET:HE1	1.80	0.63
1:A:301:LEU:HD21	3:A:450:EPB:C51	2.30	0.61
1:A:288:ARG:NE	1:A:372:ARG:HD3	2.17	0.60
1:A:244:LEU:C	1:A:244:LEU:HD23	2.24	0.58
1:A:129:THR:OG1	1:A:156:ARG:HG2	2.05	0.57
2:A:440:HEM:HBB2	2:A:440:HEM:HHC	1.85	0.56
1:A:70:SER:HA	1:A:96:PHE:O	2.05	0.56
1:A:137:ARG:HG3	4:A:591:HOH:O	2.06	0.55
1:A:62:PHE:O	4:A:493:HOH:O	2.18	0.55
1:A:92:LYS:HG3	1:A:93:TYR:CD1	2.42	0.55
1:A:153:ILE:HB	1:A:154:PRO:HD3	1.90	0.53
2:A:440:HEM:HMC2	2:A:440:HEM:HBC2	1.92	0.51
1:A:48:ARG:NH2	1:A:76:SER:OG	2.44	0.50
1:A:187:LEU:C	1:A:187:LEU:HD13	2.31	0.50
1:A:137:ARG:NH1	1:A:140:GLN:HG3	2.28	0.49
1:A:140:GLN:NE2	4:A:636:HOH:O	2.45	0.48

Continued on next page...

Continued from previous page...

Atom-1	Atom-2	Interatomic distance (Å)	Clash overlap (Å)
1:A:280:VAL:HG11	1:A:287:MET:CE	2.43	0.48
1:A:173:ARG:HG2	1:A:173:ARG:HH11	1.79	0.48
1:A:187:LEU:HD12	1:A:188:VAL:CG1	2.37	0.48
1:A:397:PHE:CE1	1:A:406:ILE:HG12	2.49	0.47
1:A:382:ILE:HG12	1:A:389:MET:CE	2.45	0.47
1:A:80:TYR:CZ	1:A:91:LYS:HE2	2.50	0.47
1:A:305:THR:HA	3:A:450:EPB:H9	1.98	0.46
2:A:440:HEM:HBC2	2:A:440:HEM:CMC	2.46	0.46
1:A:170:GLU:OE1	1:A:173:ARG:NH2	2.49	0.46
3:A:450:EPB:H1	3:A:450:EPB:H152	1.97	0.46
1:A:92:LYS:HG3	1:A:93:TYR:CE1	2.51	0.45
1:A:172:PHE:CE1	1:A:208:LEU:HD22	2.51	0.45
1:A:167:GLU:HB2	4:A:482:HOH:O	2.17	0.45
1:A:188:VAL:HB	4:A:658:HOH:O	2.17	0.44
1:A:44:TRP:CE3	1:A:47:GLY:HA3	2.53	0.44
1:A:68:ALA:HB2	1:A:310:ARG:HD2	2.00	0.44
1:A:175:PHE:CD1	1:A:205:GLY:HA3	2.52	0.44
3:A:450:EPB:H31	3:A:450:EPB:H62	1.20	0.43
1:A:55:TYR:HA	1:A:333:ALA:HB1	2.02	0.42
1:A:80:TYR:CE1	1:A:187:LEU:HB2	2.55	0.42
1:A:187:LEU:HD13	1:A:187:LEU:O	2.19	0.42
1:A:46:GLU:HG2	1:A:189:PRO:HB3	2.01	0.41
1:A:305:THR:HB	3:A:450:EPB:H82	2.03	0.41
1:A:233:GLU:OE1	1:A:241:THR:OG1	2.21	0.41
1:A:365:CYS:HB2	2:A:440:HEM:NA	2.36	0.41
1:A:73:GLU:O	1:A:323:GLY:HA2	2.21	0.41
1:A:142:GLU:CD	1:A:142:GLU:H	2.24	0.40
1:A:187:LEU:CD1	1:A:188:VAL:HG13	2.37	0.40
1:A:288:ARG:HH11	1:A:288:ARG:HG3	1.85	0.40

There are no symmetry-related clashes.

5.3 Torsion angles

5.3.1 Protein backbone

In the following table, the Percentiles column shows the percent Ramachandran outliers of the chain as a percentile score with respect to all X-ray entries followed by that with respect to entries of similar resolution.

The Analysed column shows the number of residues for which the backbone conformation was analysed, and the total number of residues.

Mol	Chain	Analysed	Favoured	Allowed	Outliers	Percentiles
1	A	399/419 (95%)	386 (97%)	11 (3%)	2 (0%)	29 17

All (2) Ramachandran outliers are listed below:

Mol	Chain	Res	Type
1	A	235	ASP
1	A	236	GLY

5.3.2 Protein sidechains [i](#)

In the following table, the Percentiles column shows the percent sidechain outliers of the chain as a percentile score with respect to all X-ray entries followed by that with respect to entries of similar resolution.

The Analysed column shows the number of residues for which the sidechain conformation was analysed, and the total number of residues.

Mol	Chain	Analysed	Rotameric	Outliers	Percentiles
1	A	336/350 (96%)	324 (96%)	12 (4%)	35 20

All (12) residues with a non-rotameric sidechain are listed below:

Mol	Chain	Res	Type
1	A	140	GLN
1	A	142	GLU
1	A	162	LEU
1	A	237	SER
1	A	238	ARG
1	A	288	ARG
1	A	327	PHE
1	A	385	ARG
1	A	391	LEU
1	A	393	GLU
1	A	394	THR
1	A	414	LYS

Sometimes sidechains can be flipped to improve hydrogen bonding and reduce clashes. All (2) such sidechains are listed below:

Mol	Chain	Res	Type
1	A	132	GLN
1	A	231	GLN

5.3.3 RNA [i](#)

There are no RNA molecules in this entry.

5.4 Non-standard residues in protein, DNA, RNA chains [i](#)

There are no non-standard protein/DNA/RNA residues in this entry.

5.5 Carbohydrates [i](#)

There are no monosaccharides in this entry.

5.6 Ligand geometry [i](#)

2 ligands are modelled in this entry.

In the following table, the Counts columns list the number of bonds (or angles) for which Mogul statistics could be retrieved, the number of bonds (or angles) that are observed in the model and the number of bonds (or angles) that are defined in the Chemical Component Dictionary. The Link column lists molecule types, if any, to which the group is linked. The Z score for a bond length (or angle) is the number of standard deviations the observed value is removed from the expected value. A bond length (or angle) with $|Z| > 2$ is considered an outlier worth inspection. RMSZ is the root-mean-square of all Z scores of the bond lengths (or angles).

Mol	Type	Chain	Res	Link	Bond lengths			Bond angles		
					Counts	RMSZ	# Z > 2	Counts	RMSZ	# Z > 2
2	HEM	A	440	4,1	41,50,50	1.84	8 (19%)	45,82,82	1.59	8 (17%)
3	EPB	A	450	-	33,37,37	3.13	13 (39%)	42,56,56	4.73	19 (45%)

In the following table, the Chirals column lists the number of chiral outliers, the number of chiral centers analysed, the number of these observed in the model and the number defined in the Chemical Component Dictionary. Similar counts are reported in the Torsion and Rings columns. '-' means no outliers of that kind were identified.

Mol	Type	Chain	Res	Link	Chirals	Torsions	Rings
2	HEM	A	440	4,1	-	1/12/54/54	-
3	EPB	A	450	-	-	10/50/59/59	0/2/3/3

All (21) bond length outliers are listed below:

Mol	Chain	Res	Type	Atoms	Z	Observed(Å)	Ideal(Å)
3	A	450	EPB	C5-C4	10.03	1.62	1.47

Continued on next page...

Continued from previous page...

Mol	Chain	Res	Type	Atoms	Z	Observed(Å)	Ideal(Å)
2	A	440	HEM	C3D-C2D	6.95	1.51	1.36
3	A	450	EPB	C6-C5	5.97	1.68	1.52
3	A	450	EPB	C13-C12	5.83	1.63	1.54
3	A	450	EPB	C15-C14	5.07	1.59	1.53
3	A	450	EPB	O1-C2	4.82	1.55	1.45
2	A	440	HEM	C3C-C2C	-4.54	1.34	1.40
3	A	450	EPB	C3-C4	-3.76	1.44	1.52
3	A	450	EPB	O12-C12	3.66	1.27	1.21
2	A	440	HEM	C3C-CAC	3.21	1.54	1.47
3	A	450	EPB	C3-C2	3.11	1.58	1.53
3	A	450	EPB	C2-C20	2.93	1.58	1.51
3	A	450	EPB	C91-C9	-2.91	1.46	1.53
3	A	450	EPB	C6-C7	2.82	1.62	1.52
2	A	440	HEM	CAB-C3B	2.51	1.54	1.47
3	A	450	EPB	C15-C16	2.39	1.55	1.50
2	A	440	HEM	CMB-C2B	2.34	1.55	1.50
2	A	440	HEM	C3B-C2B	-2.23	1.32	1.37
3	A	450	EPB	O41-C5	-2.14	1.42	1.45
2	A	440	HEM	CAA-C2A	2.13	1.55	1.52
2	A	440	HEM	CMA-C3A	2.01	1.55	1.51

All (27) bond angle outliers are listed below:

Mol	Chain	Res	Type	Atoms	Z	Observed(°)	Ideal(°)
3	A	450	EPB	C6-C5-C4	-14.39	94.64	119.02
3	A	450	EPB	O41-C5-C51	13.24	135.00	113.77
3	A	450	EPB	C5-O41-C4	10.73	69.28	60.88
3	A	450	EPB	C28-C11-C10	9.22	127.75	112.37
3	A	450	EPB	O41-C4-C5	-7.52	55.04	59.86
3	A	450	EPB	C6-C7-C8	-6.62	99.23	112.74
3	A	450	EPB	C91-C9-C8	-6.18	100.67	110.36
3	A	450	EPB	C51-C5-C6	-6.16	107.48	116.09
3	A	450	EPB	C27-C25-S1	5.90	128.05	120.12
2	A	440	HEM	C4D-ND-C1D	5.01	110.25	105.07
3	A	450	EPB	C11-C10-C9	-4.98	106.45	114.73
3	A	450	EPB	O41-C5-C4	-4.51	55.68	59.26
3	A	450	EPB	C2-O1-C16	4.28	122.76	116.37
3	A	450	EPB	C51-C5-C4	4.15	130.20	121.70
3	A	450	EPB	O1-C2-C20	-2.80	101.82	109.48
2	A	440	HEM	CBD-CAD-C3D	-2.64	105.30	112.63
3	A	450	EPB	C3-C4-C5	-2.51	121.14	125.89
2	A	440	HEM	C4C-CHD-C1D	2.49	125.84	122.56

Continued on next page...

Continued from previous page...

Mol	Chain	Res	Type	Atoms	Z	Observed(°)	Ideal(°)
3	A	450	EPB	C8-C9-C10	2.47	115.40	111.39
3	A	450	EPB	C30-C13-C29	-2.43	105.33	108.92
2	A	440	HEM	CMC-C2C-C3C	2.41	129.20	124.68
2	A	440	HEM	CHD-C1D-ND	2.34	126.97	124.43
3	A	450	EPB	C7-C6-C5	-2.31	102.27	113.97
3	A	450	EPB	O14-C14-C15	-2.24	103.23	108.67
2	A	440	HEM	CHB-C1B-NB	2.23	127.13	124.38
2	A	440	HEM	C4B-C3B-C2B	2.13	108.80	107.11
2	A	440	HEM	CAB-C3B-C2B	-2.07	121.78	128.60

There are no chirality outliers.

All (11) torsion outliers are listed below:

Mol	Chain	Res	Type	Atoms
3	A	450	EPB	C51-C5-C6-C7
3	A	450	EPB	C3-C2-C20-C21
3	A	450	EPB	C3-C2-C20-C22
3	A	450	EPB	C20-C22-C23-N26
3	A	450	EPB	C7-C8-C9-C10
3	A	450	EPB	C7-C8-C9-C91
3	A	450	EPB	C6-C7-C8-C9
3	A	450	EPB	C4-C5-C6-C7
3	A	450	EPB	C10-C11-C12-C13
3	A	450	EPB	C10-C11-C12-O12
2	A	440	HEM	CAA-CBA-CGA-O2A

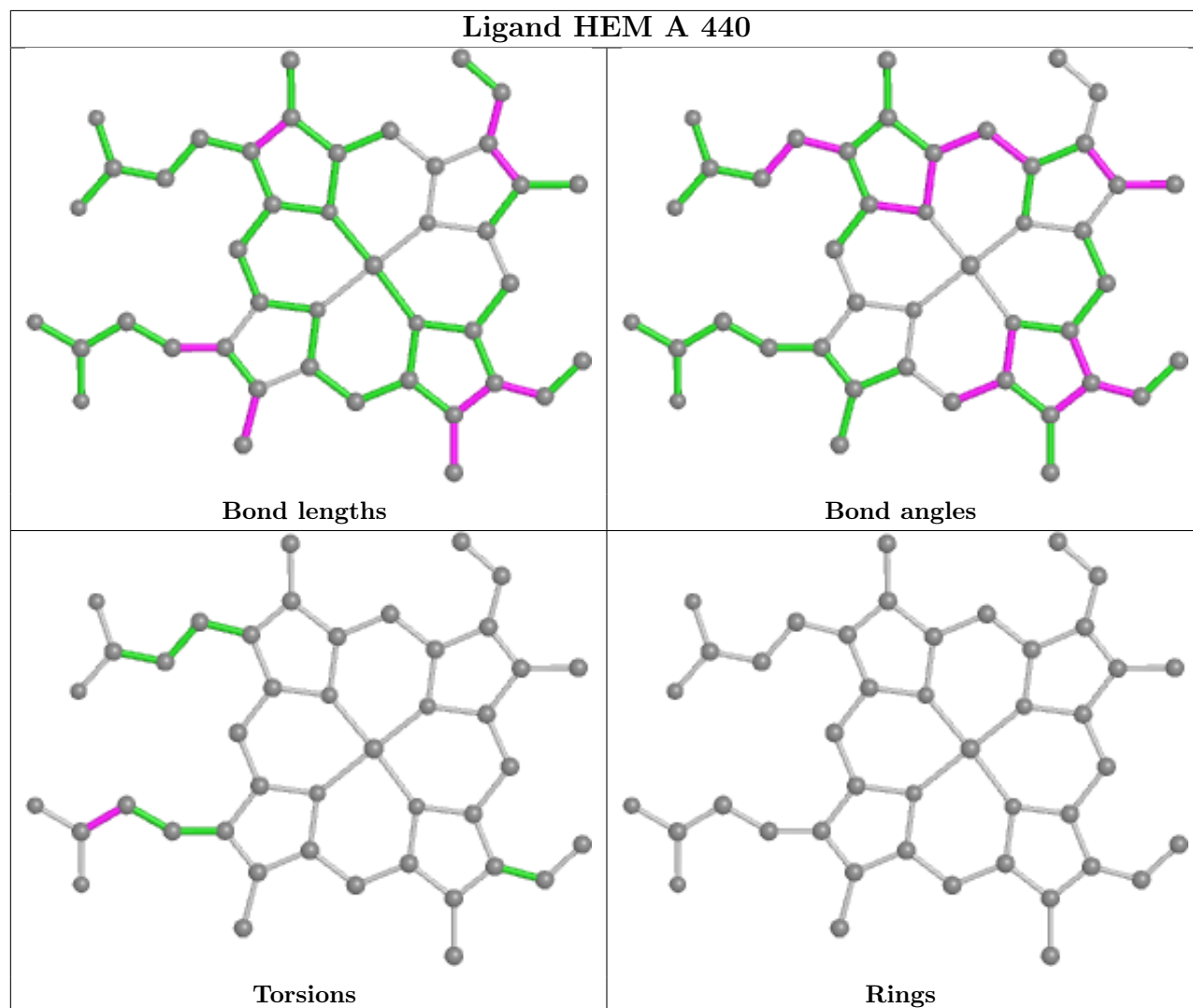
There are no ring outliers.

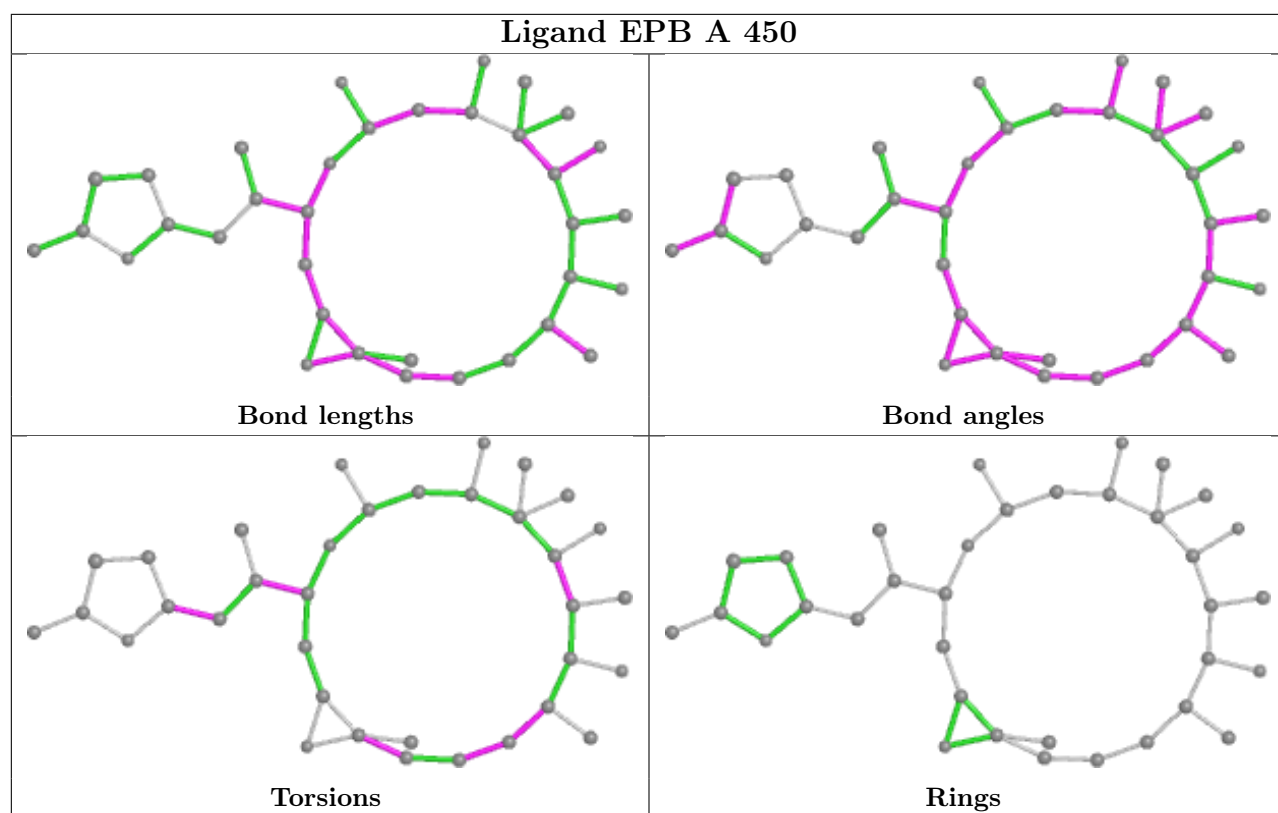
2 monomers are involved in 10 short contacts:

Mol	Chain	Res	Type	Clashes	Symm-Clashes
2	A	440	HEM	4	0
3	A	450	EPB	6	0

The following is a two-dimensional graphical depiction of Mogul quality analysis of bond lengths, bond angles, torsion angles, and ring geometry for all instances of the Ligand of Interest. In addition, ligands with molecular weight > 250 and outliers as shown on the validation Tables will also be included. For torsion angles, if less than 5% of the Mogul distribution of torsion angles is within 10 degrees of the torsion angle in question, then that torsion angle is considered an outlier. Any bond that is central to one or more torsion angles identified as an outlier by Mogul will be highlighted in the graph. For rings, the root-mean-square deviation (RMSD) between the ring in question and similar rings identified by Mogul is calculated over all ring torsion angles. If the average RMSD is greater than 60 degrees and the minimal RMSD between the ring in question and

any Mogul-identified rings is also greater than 60 degrees, then that ring is considered an outlier. The outliers are highlighted in purple. The color gray indicates Mogul did not find sufficient equivalents in the CSD to analyse the geometry.





5.7 Other polymers [i](#)

There are no such residues in this entry.

5.8 Polymer linkage issues [i](#)

There are no chain breaks in this entry.

6 Fit of model and data [i](#)

6.1 Protein, DNA and RNA chains [i](#)

In the following table, the column labelled '#RSRZ > 2' contains the number (and percentage) of RSRZ outliers, followed by percent RSRZ outliers for the chain as percentile scores relative to all X-ray entries and entries of similar resolution. The OWAB column contains the minimum, median, 95th percentile and maximum values of the occupancy-weighted average B-factor per residue. The column labelled 'Q < 0.9' lists the number of (and percentage) of residues with an average occupancy less than 0.9.

Mol	Chain	Analysed	<RSRZ>	#RSRZ>2	OWAB(Å ²)	Q<0.9
1	A	401/419 (95%)	0.36	12 (2%) 50 57	25, 36, 55, 69	0

All (12) RSRZ outliers are listed below:

Mol	Chain	Res	Type	RSRZ
1	A	139	GLY	6.3
1	A	141	GLU	4.9
1	A	140	GLN	4.2
1	A	416	SER	3.1
1	A	288	ARG	2.9
1	A	137	ARG	2.9
1	A	142	GLU	2.8
1	A	415	PRO	2.6
1	A	412	ILE	2.4
1	A	138	SER	2.2
1	A	16	ASP	2.2
1	A	63	ARG	2.0

6.2 Non-standard residues in protein, DNA, RNA chains [i](#)

There are no non-standard protein/DNA/RNA residues in this entry.

6.3 Carbohydrates [i](#)

There are no monosaccharides in this entry.

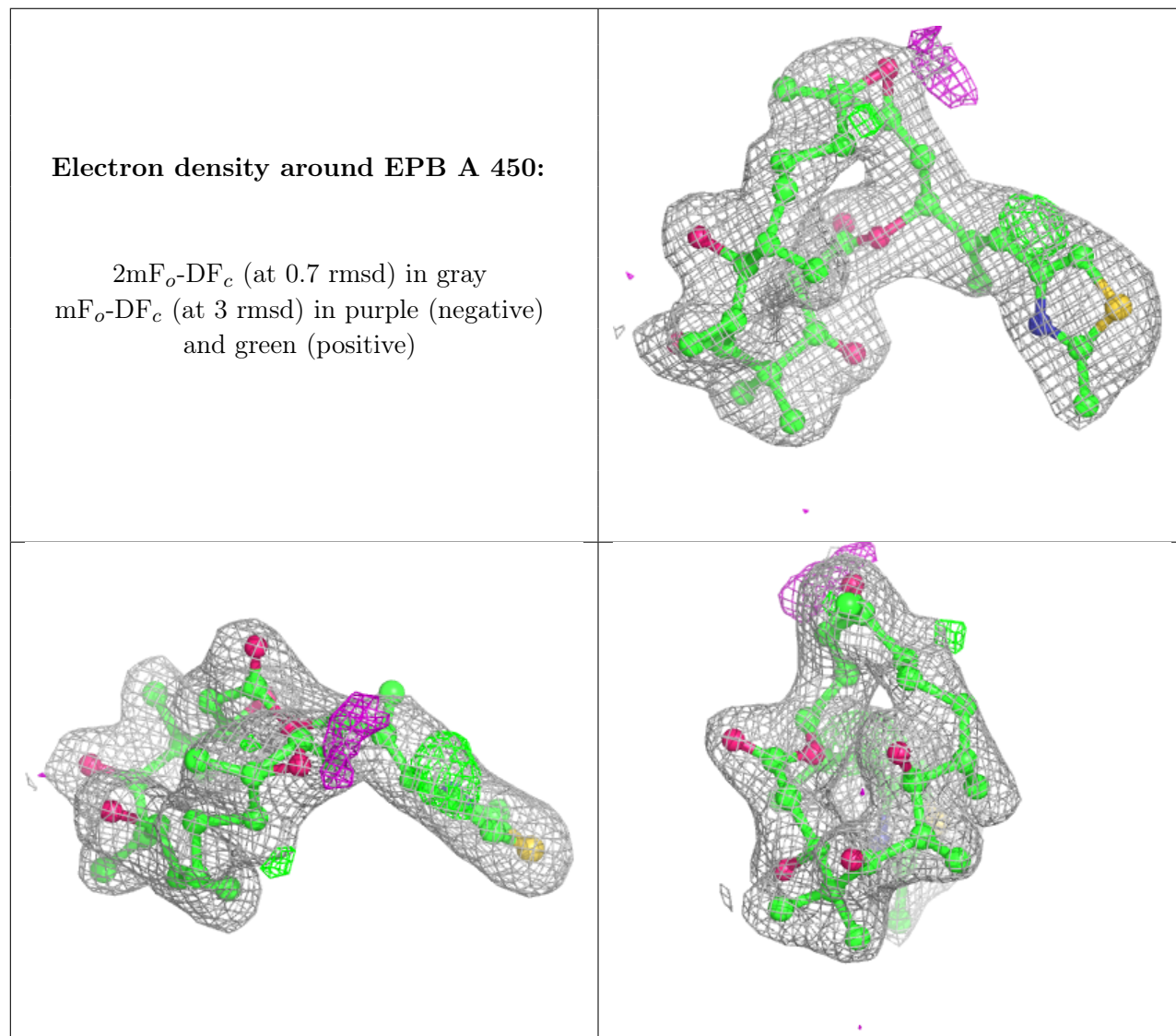
6.4 Ligands [i](#)

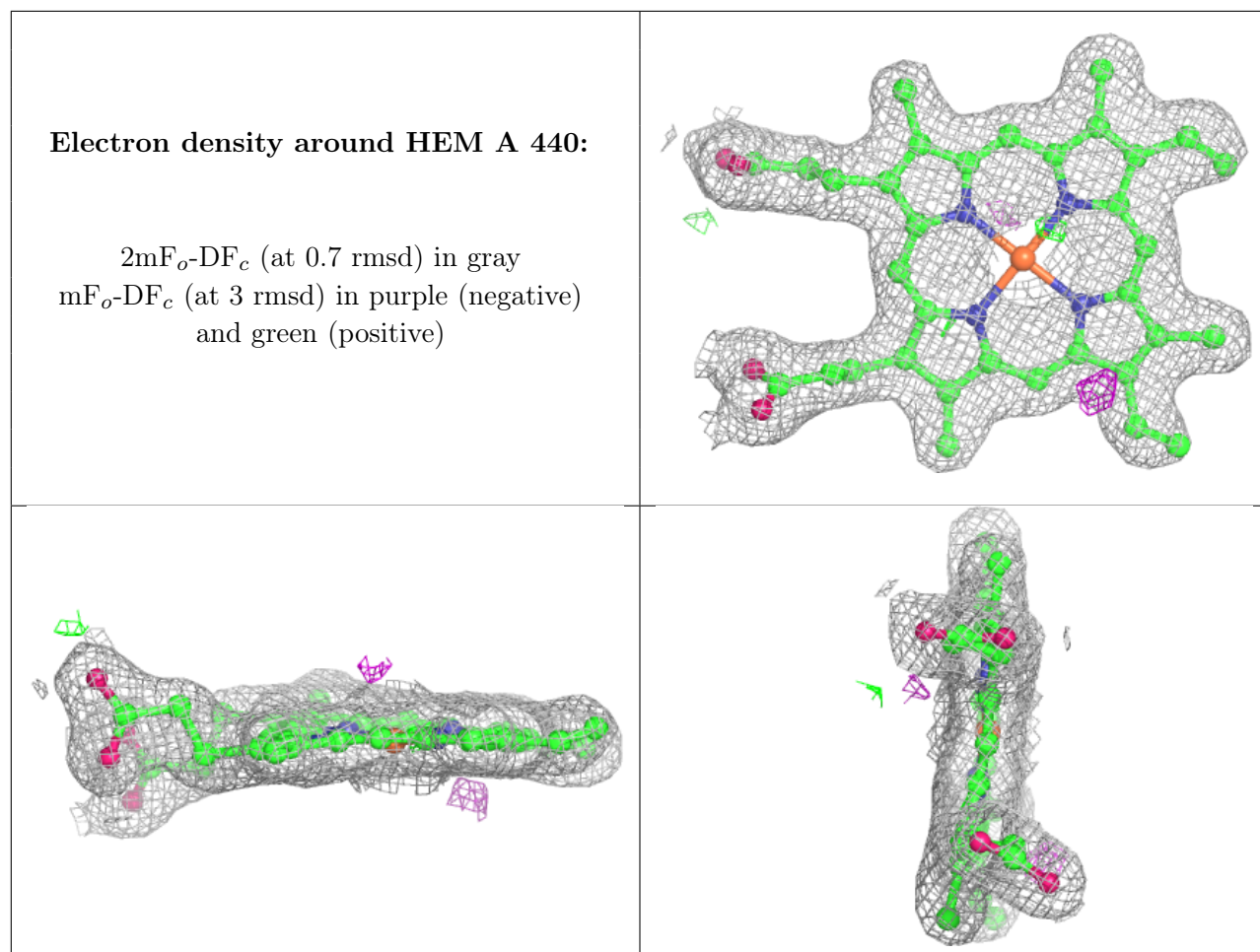
In the following table, the Atoms column lists the number of modelled atoms in the group and the number defined in the chemical component dictionary. The B-factors column lists the minimum,

median, 95th percentile and maximum values of B factors of atoms in the group. The column labelled 'Q < 0.9' lists the number of atoms with occupancy less than 0.9.

Mol	Type	Chain	Res	Atoms	RSCC	RSR	B-factors(Å ²)	Q<0.9
3	EPB	A	450	35/35	0.91	0.15	33,39,45,47	0
2	HEM	A	440	43/43	0.98	0.13	24,26,30,31	0

The following is a graphical depiction of the model fit to experimental electron density of all instances of the Ligand of Interest. In addition, ligands with molecular weight > 250 and outliers as shown on the geometry validation Tables will also be included. Each fit is shown from different orientation to approximate a three-dimensional view.





6.5 Other polymers [i](#)

There are no such residues in this entry.