



Full wwPDB EM Validation Report ⓘ

Apr 10, 2024 – 10:37 am BST

PDB ID : 8PTZ
EMDB ID : EMD-17926
Title : Cryo-EM structure of human Elp123 in complex with tRNA, S-ethyl-CoA, 5'-deoxyadenosine and methionine
Authors : Abbassi, N.; Jaciuk, M.; Lin, T.-Y.; Glatt, S.
Deposited on : 2023-07-16
Resolution : 3.35 Å(reported)
Based on initial model : .

This is a Full wwPDB EM Validation Report for a publicly released PDB entry.

We welcome your comments at validation@mail.wwpdb.org

A user guide is available at

<https://www.wwpdb.org/validation/2017/EMValidationReportHelp>

with specific help available everywhere you see the ⓘ symbol.

The types of validation reports are described at

<http://www.wwpdb.org/validation/2017/FAQs#types>.

The following versions of software and data (see [references ⓘ](#)) were used in the production of this report:

EMDB validation analysis : 0.0.1.dev92
Mogul : 1.8.4, CSD as541be (2020)
MolProbity : 4.02b-467
buster-report : 1.1.7 (2018)
Percentile statistics : 20191225.v01 (using entries in the PDB archive December 25th 2019)
MapQ : 1.9.13
Ideal geometry (proteins) : Engh & Huber (2001)
Ideal geometry (DNA, RNA) : Parkinson et al. (1996)
Validation Pipeline (wwPDB-VP) : 2.36

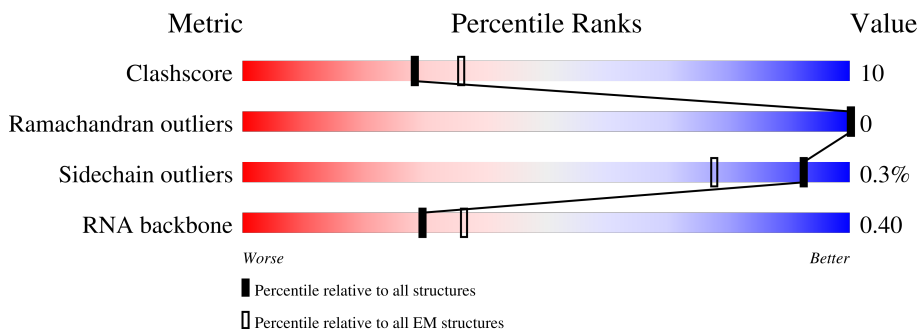
1 Overall quality at a glance i

The following experimental techniques were used to determine the structure:

ELECTRON MICROSCOPY

The reported resolution of this entry is 3.35 Å.

Percentile scores (ranging between 0-100) for global validation metrics of the entry are shown in the following graphic. The table shows the number of entries on which the scores are based.



Metric	Whole archive (#Entries)	EM structures (#Entries)
Clashscore	158937	4297
Ramachandran outliers	154571	4023
Sidechain outliers	154315	3826
RNA backbone	4643	859

The table below summarises the geometric issues observed across the polymeric chains and their fit to the map. The red, orange, yellow and green segments of the bar indicate the fraction of residues that contain outliers for ≥ 3 , 2, 1 and 0 types of geometric quality criteria respectively. A grey segment represents the fraction of residues that are not modelled. The numeric value for each fraction is indicated below the corresponding segment, with a dot representing fractions $\leq 5\%$. The upper red bar (where present) indicates the fraction of residues that have poor fit to the EM map (all-atom inclusion $< 40\%$). The numeric value is given above the bar.

Mol	Chain	Length	Quality of chain
1	A	1332	
2	B	826	
3	C	581	
4	X	75	

2 Entry composition [i](#)

There are 9 unique types of molecules in this entry. The entry contains 17194 atoms, of which 0 are hydrogens and 0 are deuteriums.

In the tables below, the AltConf column contains the number of residues with at least one atom in alternate conformation and the Trace column contains the number of residues modelled with at most 2 atoms.

- Molecule 1 is a protein called Elongator complex protein 1.

Mol	Chain	Residues	Atoms					AltConf	Trace
			Total	C	N	O	S		
1	A	685	5357	3396	915	1017	29	0	0

- Molecule 2 is a protein called Elongator complex protein 2.

Mol	Chain	Residues	Atoms					AltConf	Trace
			Total	C	N	O	S		
2	B	741	5861	3732	1016	1074	39	0	0

- Molecule 3 is a protein called Elongator complex protein 3.

Mol	Chain	Residues	Atoms					AltConf	Trace
			Total	C	N	O	S		
3	C	538	4296	2726	763	780	27	0	0

There are 34 discrepancies between the modelled and reference sequences:

Chain	Residue	Modelled	Actual	Comment	Reference
C	548	GLY	-	expression tag	UNP Q9H9T3
C	549	LEU	-	expression tag	UNP Q9H9T3
C	550	GLU	-	expression tag	UNP Q9H9T3
C	551	GLY	-	expression tag	UNP Q9H9T3
C	552	SER	-	expression tag	UNP Q9H9T3
C	553	ALA	-	expression tag	UNP Q9H9T3
C	554	TRP	-	expression tag	UNP Q9H9T3
C	555	SER	-	expression tag	UNP Q9H9T3
C	556	HIS	-	expression tag	UNP Q9H9T3
C	557	PRO	-	expression tag	UNP Q9H9T3
C	558	GLN	-	expression tag	UNP Q9H9T3
C	559	PHE	-	expression tag	UNP Q9H9T3
C	560	GLU	-	expression tag	UNP Q9H9T3
C	561	LYS	-	expression tag	UNP Q9H9T3
C	562	GLY	-	expression tag	UNP Q9H9T3

Continued on next page...

Continued from previous page...

Chain	Residue	Modelled	Actual	Comment	Reference
C	563	GLY	-	expression tag	UNP Q9H9T3
C	564	GLY	-	expression tag	UNP Q9H9T3
C	565	SER	-	expression tag	UNP Q9H9T3
C	566	GLY	-	expression tag	UNP Q9H9T3
C	567	GLY	-	expression tag	UNP Q9H9T3
C	568	GLY	-	expression tag	UNP Q9H9T3
C	569	SER	-	expression tag	UNP Q9H9T3
C	570	GLY	-	expression tag	UNP Q9H9T3
C	571	GLY	-	expression tag	UNP Q9H9T3
C	572	SER	-	expression tag	UNP Q9H9T3
C	573	ALA	-	expression tag	UNP Q9H9T3
C	574	TRP	-	expression tag	UNP Q9H9T3
C	575	SER	-	expression tag	UNP Q9H9T3
C	576	HIS	-	expression tag	UNP Q9H9T3
C	577	PRO	-	expression tag	UNP Q9H9T3
C	578	GLN	-	expression tag	UNP Q9H9T3
C	579	PHE	-	expression tag	UNP Q9H9T3
C	580	GLU	-	expression tag	UNP Q9H9T3
C	581	LYS	-	expression tag	UNP Q9H9T3

- Molecule 4 is a RNA chain called tRNA Gln.

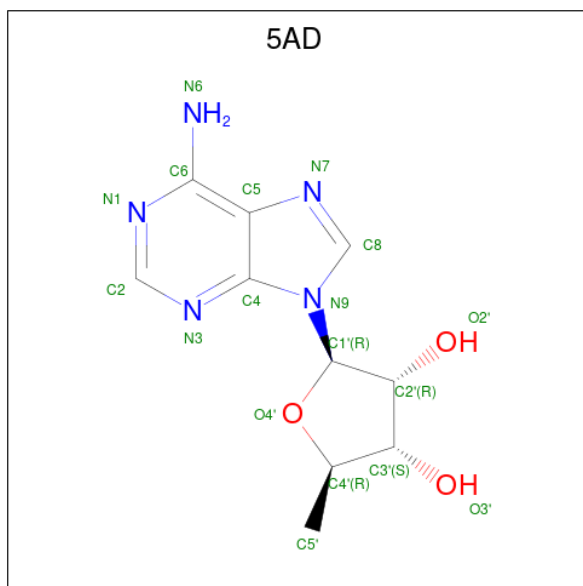
Mol	Chain	Residues	Atoms					AltConf	Trace
			Total	C	N	O	P		
4	X	75	1593	711	278	529	75	0	0

- Molecule 5 is IRON/SULFUR CLUSTER (three-letter code: SF4) (formula: Fe₄S₄) (labeled as "Ligand of Interest" by depositor).



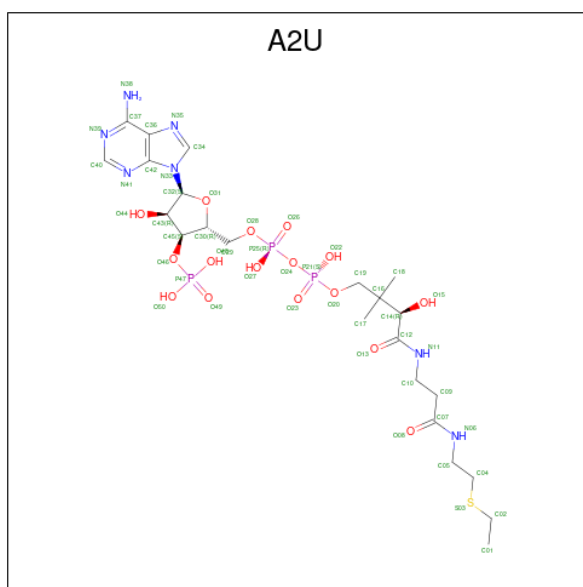
Mol	Chain	Residues	Atoms			AltConf
5	C	1	Total	Fe	S	0
			8	4	4	

- Molecule 6 is 5'-DEOXYADENOSINE (three-letter code: 5AD) (formula: $C_{10}H_{13}N_5O_3$) (labeled as "Ligand of Interest" by depositor).



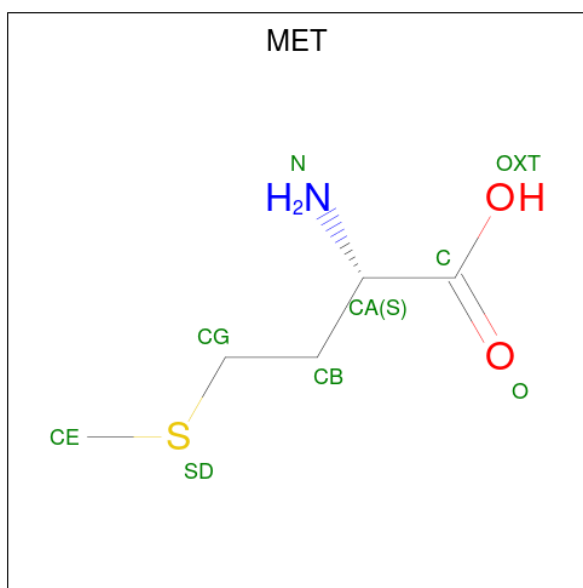
Mol	Chain	Residues	Atoms			AltConf	
6	C	1	Total	C	N	O	0
			18	10	5	3	

- Molecule 7 is S-Ethyl-CoA (three-letter code: A2U) (formula: $C_{23}H_{40}N_7O_{16}P_3S$) (labeled as "Ligand of Interest" by depositor).



Mol	Chain	Residues	Atoms					AltConf	
			Total	C	N	O	P		S
7	C	1	50	23	7	16	3	1	0

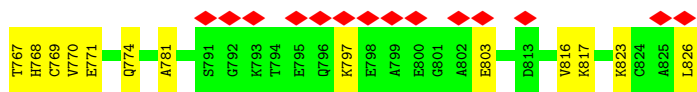
- Molecule 8 is METHIONINE (three-letter code: MET) (formula: $C_5H_{11}NO_2S$) (labeled as "Ligand of Interest" by depositor).



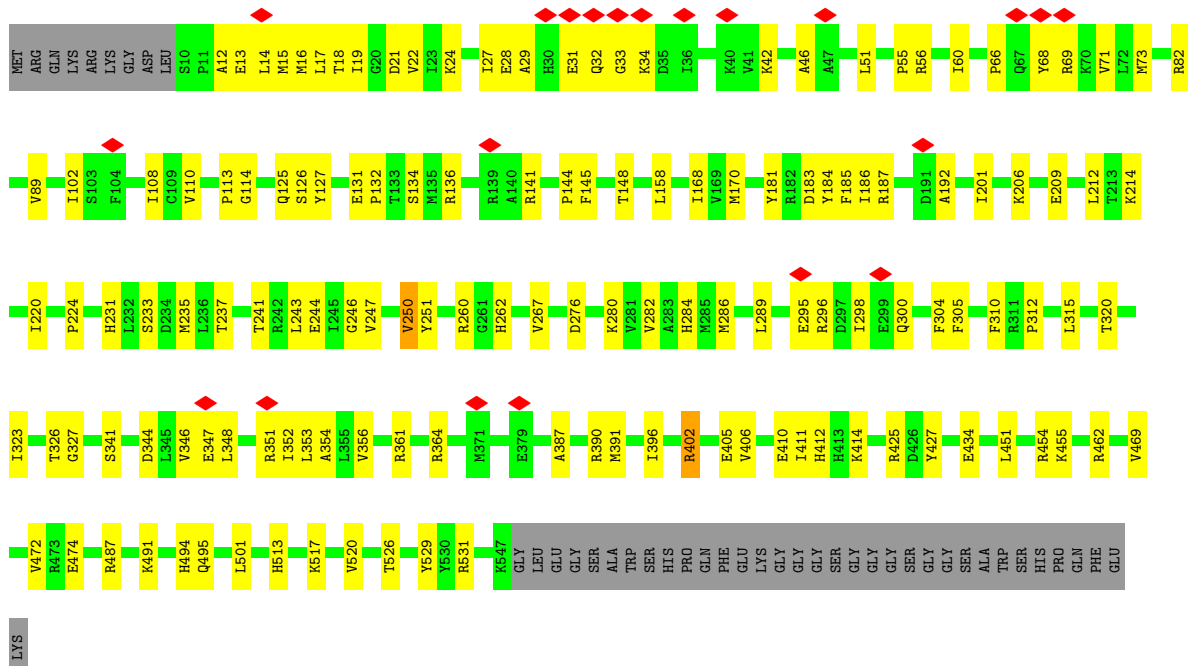
Mol	Chain	Residues	Atoms					AltConf
			Total	C	N	O	S	
8	C	1	9	5	1	2	1	0

- Molecule 9 is MAGNESIUM ION (three-letter code: MG) (formula: Mg) (labeled as "Ligand of Interest" by depositor).

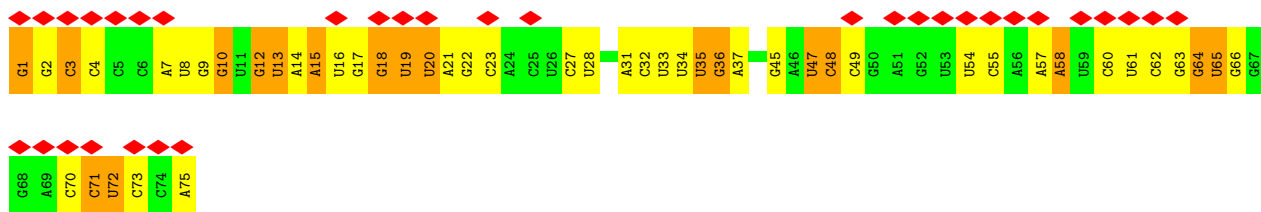
Mol	Chain	Residues	Atoms		AltConf
9	X	2	Total	Mg	0
			2	2	



• Molecule 3: Elongator complex protein 3



• Molecule 4: tRNA Gln



4 Experimental information

Property	Value	Source
EM reconstruction method	SINGLE PARTICLE	Depositor
Imposed symmetry	POINT, Not provided	
Number of particles used	31251	Depositor
Resolution determination method	FSC 0.143 CUT-OFF	Depositor
CTF correction method	PHASE FLIPPING AND AMPLITUDE CORRECTION	Depositor
Microscope	TFS KRIOS	Depositor
Voltage (kV)	300	Depositor
Electron dose ($e^-/\text{\AA}^2$)	40	Depositor
Minimum defocus (nm)	900	Depositor
Maximum defocus (nm)	2700	Depositor
Magnification	96000	Depositor
Image detector	FEI FALCON III (4k x 4k)	Depositor
Maximum map value	2.128	Depositor
Minimum map value	-0.014	Depositor
Average map value	0.001	Depositor
Map value standard deviation	0.018	Depositor
Recommended contour level	0.11	Depositor
Map size (Å)	391.0, 391.0, 391.0	wwPDB
Map dimensions	460, 460, 460	wwPDB
Map angles (°)	90.0, 90.0, 90.0	wwPDB
Pixel spacing (Å)	0.85, 0.85, 0.85	Depositor

5 Model quality i

5.1 Standard geometry i

Bond lengths and bond angles in the following residue types are not validated in this section: 5AD, MG, SF4, A2U

The Z score for a bond length (or angle) is the number of standard deviations the observed value is removed from the expected value. A bond length (or angle) with $|Z| > 5$ is considered an outlier worth inspection. RMSZ is the root-mean-square of all Z scores of the bond lengths (or angles).

Mol	Chain	Bond lengths		Bond angles	
		RMSZ	# $ Z > 5$	RMSZ	# $ Z > 5$
1	A	0.25	0/5483	0.50	0/7466
2	B	0.26	0/6018	0.50	0/8196
3	C	0.26	0/4391	0.55	0/5933
4	X	0.51	1/1778 (0.1%)	0.95	0/2766
All	All	0.29	1/17670 (0.0%)	0.58	0/24361

All (1) bond length outliers are listed below:

Mol	Chain	Res	Type	Atoms	Z	Observed(Å)	Ideal(Å)
4	X	1	G	OP3-P	-10.56	1.48	1.61

There are no bond angle outliers.

There are no chirality outliers.

There are no planarity outliers.

5.2 Too-close contacts i

In the following table, the Non-H and H(model) columns list the number of non-hydrogen atoms and hydrogen atoms in the chain respectively. The H(added) column lists the number of hydrogen atoms added and optimized by MolProbity. The Clashes column lists the number of clashes within the asymmetric unit, whereas Symm-Clashes lists symmetry-related clashes.

Mol	Chain	Non-H	H(model)	H(added)	Clashes	Symm-Clashes
1	A	5357	0	5268	101	0
2	B	5861	0	5704	135	0
3	C	4296	0	4324	91	0
4	X	1593	0	807	30	0
5	C	8	0	0	0	0
6	C	18	0	13	0	0

Continued on next page...

Continued from previous page...

Mol	Chain	Non-H	H(model)	H(added)	Clashes	Symm-Clashes
7	C	50	0	0	0	0
8	C	9	0	8	0	0
9	X	2	0	0	0	0
All	All	17194	0	16124	348	0

The all-atom clashscore is defined as the number of clashes found per 1000 atoms (including hydrogen atoms). The all-atom clashscore for this structure is 10.

All (348) close contacts within the same asymmetric unit are listed below, sorted by their clash magnitude.

Atom-1	Atom-2	Interatomic distance (Å)	Clash overlap (Å)
2:B:350:ASN:HD22	2:B:355:MET:H	1.18	0.91
4:X:12:G:O2'	4:X:13:U:OP1	1.91	0.87
2:B:574:THR:HG21	2:B:621:ALA:HA	1.59	0.83
1:A:311:GLU:HB3	1:A:314:SER:HB3	1.65	0.78
2:B:679:PRO:HG2	2:B:730:PRO:HA	1.65	0.78
2:B:306:ARG:HH21	2:B:318:LEU:HD21	1.51	0.76
2:B:120:ARG:HB3	2:B:124:PRO:HG3	1.70	0.73
2:B:438:GLY:HA3	3:C:141:ARG:HD2	1.71	0.73
3:C:469:VAL:HG22	3:C:517:LYS:HB2	1.71	0.73
3:C:12:ALA:O	3:C:15:MET:HB3	1.87	0.73
2:B:11:VAL:HB	2:B:50:VAL:HG11	1.72	0.71
1:A:363:CYS:HB2	1:A:367:HIS:HB3	1.73	0.71
1:A:556:VAL:HB	1:A:574:ALA:HB2	1.71	0.70
4:X:9:G:O2'	4:X:10:G:N7	2.24	0.70
3:C:387:ALA:O	3:C:391:MET:HG2	1.93	0.69
1:A:361:VAL:HB	1:A:369:LEU:HB2	1.72	0.68
3:C:66:PRO:HA	3:C:69:ARG:HD2	1.76	0.68
1:A:484:LYS:NZ	1:A:540:GLU:O	2.27	0.68
1:A:528:ILE:HD11	1:A:571:LEU:HD21	1.75	0.67
2:B:350:ASN:ND2	2:B:355:MET:H	1.89	0.67
2:B:621:ALA:HB3	2:B:677:TRP:HZ3	1.58	0.67
2:B:630:LEU:HD21	2:B:632:VAL:HG13	1.78	0.66
3:C:209:GLU:OE2	3:C:531:ARG:NH2	2.28	0.66
2:B:11:VAL:HG22	2:B:817:LYS:HG2	1.77	0.65
1:A:390:ASN:ND2	1:A:437:ASN:OD1	2.26	0.65
1:A:122:GLU:HA	1:A:138:LYS:HB2	1.78	0.65
2:B:452:PHE:HB3	2:B:464:PHE:HB2	1.79	0.65
1:A:49:ARG:NH2	1:A:521:GLU:O	2.29	0.64
2:B:547:THR:HG22	2:B:548:GLU:H	1.62	0.64
3:C:491:LYS:O	3:C:495:GLN:NE2	2.31	0.64

Continued on next page...

Continued from previous page...

Atom-1	Atom-2	Interatomic distance (Å)	Clash overlap (Å)
3:C:69:ARG:O	3:C:73:MET:HG2	1.98	0.64
3:C:82:ARG:NH2	4:X:36:G:OP2	2.29	0.63
2:B:161:PHE:HZ	3:C:206:LYS:HG3	1.64	0.62
2:B:478:THR:HG23	2:B:480:GLN:H	1.64	0.62
2:B:133:ALA:HB2	2:B:165:LEU:HD11	1.81	0.62
1:A:135:MET:HB2	1:A:228:PHE:CZ	2.35	0.61
1:A:322:LEU:HB2	1:A:334:GLN:HB2	1.82	0.61
1:A:453:CYS:HA	1:A:480:PRO:HA	1.82	0.61
3:C:17:LEU:O	3:C:21:ASP:N	2.33	0.61
3:C:89:VAL:HG13	3:C:168:ILE:HD13	1.81	0.61
2:B:350:ASN:OD1	2:B:351:GLU:N	2.34	0.61
3:C:136:ARG:NH2	4:X:35:U:OP1	2.33	0.61
1:A:292:LEU:HD22	1:A:303:VAL:HG12	1.82	0.61
1:A:384:ASN:ND2	1:A:703:GLN:OE1	2.34	0.61
1:A:125:LEU:HD11	1:A:133:LEU:HG	1.83	0.61
3:C:15:MET:O	3:C:18:THR:HB	2.00	0.61
1:A:570:VAL:HG13	1:A:578:ILE:HG23	1.83	0.61
1:A:189:LEU:HD21	1:A:191:TRP:CE2	2.35	0.60
2:B:623:SER:HB3	2:B:628:PHE:HB2	1.83	0.60
3:C:181:TYR:CZ	3:C:185:PHE:HE2	2.19	0.60
1:A:349:LEU:HD22	1:A:361:VAL:HG22	1.82	0.60
2:B:733:HIS:HB2	2:B:737:ARG:HB2	1.84	0.60
1:A:486:TYR:HB3	1:A:545:LEU:HG	1.82	0.60
3:C:487:ARG:NH1	3:C:494:HIS:O	2.34	0.60
2:B:575:CYS:SG	2:B:576:ASN:N	2.74	0.59
3:C:183:ASP:HB2	3:C:201:ILE:HD11	1.84	0.59
3:C:276:ASP:OD1	3:C:454:ARG:NH2	2.28	0.59
3:C:241:THR:O	3:C:280:LYS:NZ	2.35	0.59
2:B:12:PHE:HD2	2:B:816:VAL:HB	1.68	0.58
2:B:768:HIS:CE1	2:B:771:GLU:HG3	2.38	0.58
1:A:641:ILE:HD13	1:A:653:LEU:HD23	1.85	0.58
3:C:348:LEU:O	3:C:352:ILE:HD12	2.03	0.58
1:A:295:ASN:OD1	1:A:296:ALA:N	2.29	0.58
1:A:578:ILE:HG21	1:A:621:VAL:HG21	1.86	0.58
1:A:447:GLN:NE2	1:A:485:ARG:O	2.36	0.58
1:A:125:LEU:HD23	1:A:198:VAL:HG11	1.86	0.57
2:B:19:ARG:HD2	2:B:211:ARG:HH21	1.67	0.57
2:B:406:VAL:HG22	2:B:412:THR:HG22	1.85	0.57
1:A:2:ARG:O	1:A:333:LYS:NZ	2.34	0.57
2:B:292:GLN:NE2	2:B:352:ASP:O	2.31	0.57
2:B:753:THR:HG1	2:B:769:CYS:HG	1.45	0.57

Continued on next page...

Continued from previous page...

Atom-1	Atom-2	Interatomic distance (Å)	Clash overlap (Å)
2:B:728:VAL:HG22	2:B:740:VAL:HG12	1.87	0.56
2:B:344:PHE:HD1	2:B:360:ALA:HA	1.70	0.56
1:A:689:ARG:NH1	1:A:690:LYS:O	2.36	0.56
3:C:361:ARG:NH1	3:C:405:GLU:OE1	2.37	0.56
1:A:90:GLY:HA2	1:A:112:ILE:HG13	1.88	0.56
2:B:672:ILE:HA	2:B:688:SER:HA	1.86	0.56
1:A:125:LEU:HD21	1:A:133:LEU:HD21	1.87	0.56
1:A:580:LYS:HE3	1:A:582:LEU:HD11	1.87	0.55
2:B:120:ARG:HG3	2:B:122:SER:H	1.71	0.55
2:B:222:LEU:HD12	2:B:238:LEU:HD22	1.87	0.55
2:B:55:ASN:ND2	2:B:774:GLN:O	2.31	0.55
1:A:595:ASN:HD21	1:A:599:PHE:HB2	1.70	0.55
3:C:212:LEU:O	3:C:214:LYS:NZ	2.34	0.55
3:C:68:TYR:HA	3:C:71:VAL:HG22	1.89	0.55
3:C:451:LEU:HB2	3:C:501:LEU:HD23	1.88	0.55
2:B:688:SER:OG	2:B:689:ARG:N	2.41	0.54
3:C:181:TYR:HH	3:C:185:PHE:HE2	1.55	0.54
2:B:83:SER:HA	2:B:109:PRO:HB3	1.90	0.54
3:C:127:TYR:HE2	3:C:170:MET:HB3	1.73	0.54
2:B:596:ILE:HD11	2:B:610:LEU:HD12	1.88	0.54
3:C:364:ARG:NH2	4:X:32:C:O4'	2.40	0.54
1:A:333:LYS:O	1:A:334:GLN:NE2	2.40	0.54
1:A:692:GLU:HG2	1:A:693:ARG:H	1.73	0.54
1:A:352:ASP:OD1	1:A:355:THR:N	2.39	0.54
1:A:563:ASN:HB3	1:A:568:SER:H	1.72	0.54
2:B:441:LEU:HD23	2:B:454:SER:HB2	1.89	0.54
2:B:441:LEU:HA	2:B:456:ALA:HA	1.90	0.54
1:A:430:LEU:HG	1:A:432:HIS:H	1.73	0.53
2:B:417:PRO:HA	2:B:428:TRP:HA	1.89	0.53
2:B:677:TRP:CD1	2:B:684:PHE:HB3	2.43	0.53
2:B:124:PRO:HB2	2:B:127:CYS:HB2	1.91	0.53
2:B:634:ARG:HG3	2:B:671:ILE:HD12	1.89	0.53
1:A:111:GLY:O	1:A:129:GLY:N	2.42	0.53
3:C:29:ALA:O	3:C:33:GLY:N	2.42	0.53
2:B:23:ASN:HD22	2:B:65:GLN:HA	1.73	0.53
2:B:24:TRP:CE3	2:B:350:ASN:HA	2.44	0.53
1:A:387:ASP:OD2	1:A:436:SER:OG	2.21	0.53
2:B:756:LYS:HG3	2:B:758:ASP:H	1.73	0.52
2:B:371:ASN:HD21	2:B:373:VAL:HB	1.75	0.52
2:B:395:VAL:HG11	2:B:446:MET:HG2	1.90	0.52
3:C:305:PHE:HZ	3:C:315:LEU:HD22	1.74	0.52

Continued on next page...

Continued from previous page...

Atom-1	Atom-2	Interatomic distance (Å)	Clash overlap (Å)
3:C:414:LYS:O	3:C:414:LYS:NZ	2.27	0.52
1:A:640:ASN:O	1:A:656:HIS:N	2.39	0.52
2:B:350:ASN:HD22	2:B:355:MET:N	1.99	0.52
1:A:80:GLN:OE1	1:A:82:SER:OG	2.27	0.52
3:C:347:GLU:O	3:C:351:ARG:HG2	2.10	0.52
4:X:70:C:H2'	4:X:71:C:C6	2.44	0.52
2:B:187:ILE:HD11	2:B:203:LEU:HD12	1.92	0.52
1:A:343:LYS:HE2	1:A:365:GLY:HA3	1.91	0.52
3:C:224:PRO:HG3	3:C:267:VAL:HG22	1.91	0.52
2:B:461:LEU:HB2	2:B:563:LEU:HB2	1.91	0.52
3:C:402:ARG:NH2	4:X:33:U:OP1	2.43	0.52
3:C:233:SER:HA	3:C:462:ARG:HH22	1.75	0.51
2:B:23:ASN:ND2	2:B:66:TRP:H	2.09	0.51
2:B:80:SER:OG	2:B:81:GLY:N	2.42	0.51
2:B:370:GLN:HG2	2:B:375:PRO:HA	1.93	0.51
1:A:219:ARG:HB2	1:A:240:LEU:HB3	1.93	0.51
2:B:110:VAL:HA	2:B:134:ALA:HA	1.92	0.50
2:B:112:ALA:HB3	2:B:133:ALA:HB3	1.93	0.50
2:B:405:THR:HG21	2:B:816:VAL:HG11	1.93	0.50
2:B:759:GLN:HB2	2:B:761:PRO:HD2	1.93	0.50
2:B:577:SER:OG	2:B:626:GLU:OE1	2.26	0.49
2:B:682:LYS:HG3	2:B:683:TYR:CD1	2.46	0.49
4:X:49:C:O2	4:X:64:G:N2	2.45	0.49
2:B:437:HIS:CD2	2:B:439:TYR:H	2.29	0.49
3:C:251:TYR:HE2	3:C:296:ARG:HG2	1.77	0.49
3:C:24:LYS:O	3:C:28:GLU:HB2	2.12	0.49
3:C:250:VAL:HG23	3:C:300:GLN:HB2	1.95	0.49
1:A:24:PHE:CZ	1:A:350:MET:HG3	2.48	0.49
2:B:279:LEU:HD13	2:B:319:TRP:CE3	2.47	0.49
1:A:634:ASP:N	1:A:634:ASP:OD1	2.46	0.49
2:B:141:LEU:HD12	2:B:153:GLN:HB3	1.95	0.49
3:C:114:GLY:O	3:C:125:GLN:NE2	2.46	0.49
1:A:494:GLU:HG2	1:A:496:GLN:H	1.77	0.48
1:A:305:LEU:HB2	1:A:319:CYS:HB2	1.95	0.48
2:B:389:ASP:OD1	2:B:390:GLY:N	2.43	0.48
3:C:247:VAL:HG12	3:C:247:VAL:O	2.13	0.48
1:A:72:VAL:HB	1:A:86:ALA:HB3	1.95	0.48
4:X:15:A:H2'	4:X:58:A:N1	2.29	0.48
4:X:63:G:H3'	4:X:64:G:H8	1.78	0.48
1:A:455:ASP:OD1	1:A:455:ASP:N	2.46	0.48
1:A:649:GLU:HG3	1:A:666:ARG:HG3	1.95	0.48

Continued on next page...

Continued from previous page...

Atom-1	Atom-2	Interatomic distance (Å)	Clash overlap (Å)
3:C:286:MET:HG2	3:C:289:LEU:HD21	1.95	0.48
2:B:675:CYS:SG	2:B:676:ASP:N	2.86	0.48
3:C:110:VAL:HG13	3:C:327:GLY:HA3	1.95	0.48
1:A:489:GLN:HE21	1:A:546:ASN:HA	1.78	0.48
2:B:150:MET:SD	2:B:150:MET:N	2.86	0.48
2:B:163:LEU:HD23	2:B:211:ARG:HH11	1.79	0.48
1:A:75:GLN:HG2	1:A:117:TRP:CD1	2.48	0.48
3:C:183:ASP:OD1	3:C:184:TYR:N	2.46	0.48
3:C:184:TYR:HA	3:C:187:ARG:HE	1.79	0.48
3:C:472:VAL:HB	3:C:520:VAL:HG22	1.96	0.48
1:A:306:GLU:OE2	1:A:318:THR:OG1	2.25	0.48
1:A:187:SER:OG	1:A:188:ALA:N	2.46	0.47
1:A:463:VAL:HG21	1:A:480:PRO:O	2.14	0.47
2:B:444:LEU:HD11	2:B:452:PHE:CE1	2.49	0.47
2:B:768:HIS:NE2	2:B:771:GLU:HG3	2.29	0.47
3:C:323:ILE:O	3:C:326:THR:OG1	2.26	0.47
2:B:6:LEU:HB2	2:B:770:VAL:HG11	1.97	0.47
2:B:10:HIS:O	2:B:817:LYS:HA	2.13	0.47
2:B:289:VAL:HG23	2:B:307:LEU:HD21	1.97	0.47
4:X:65:U:H2'	4:X:66:G:C8	2.50	0.47
1:A:96:SER:OG	1:A:97:LEU:N	2.47	0.47
1:A:345:LYS:HB2	1:A:364:GLN:HB2	1.96	0.47
4:X:27:C:H2'	4:X:28:U:C6	2.49	0.47
2:B:392:GLN:H	2:B:407:GLY:HA2	1.78	0.47
2:B:437:HIS:CD2	2:B:439:TYR:HB2	2.50	0.47
3:C:132:PRO:HG3	4:X:35:U:C6	2.49	0.47
2:B:381:GLU:HG3	2:B:382:ILE:H	1.80	0.47
2:B:406:VAL:HG21	2:B:444:LEU:HD13	1.96	0.47
2:B:748:LYS:HG3	2:B:748:LYS:O	2.14	0.47
1:A:295:ASN:HD22	1:A:300:VAL:HB	1.80	0.47
1:A:336:LEU:HG	1:A:501:LEU:HD11	1.96	0.47
2:B:371:ASN:ND2	2:B:374:ASN:H	2.13	0.47
1:A:422:HIS:NE2	1:A:445:SER:HB2	2.30	0.46
2:B:733:HIS:CE1	2:B:823:LYS:HE2	2.51	0.46
2:B:387:HIS:CD2	2:B:413:ARG:HD2	2.50	0.46
1:A:443:ASP:OD1	1:A:443:ASP:N	2.45	0.46
2:B:346:ASP:OD1	2:B:347:CYS:N	2.48	0.46
2:B:803:GLU:N	2:B:803:GLU:OE1	2.49	0.46
1:A:580:LYS:HB3	1:A:580:LYS:HE2	1.78	0.46
2:B:463:VAL:HG13	2:B:560:VAL:HG23	1.98	0.46
3:C:304:PHE:CD1	3:C:310:PHE:HB3	2.51	0.46

Continued on next page...

Continued from previous page...

Atom-1	Atom-2	Interatomic distance (Å)	Clash overlap (Å)
3:C:406:VAL:O	3:C:410:GLU:HG2	2.16	0.46
1:A:573:LEU:HD12	1:A:577:GLN:HB3	1.96	0.46
3:C:145:PHE:HD1	3:C:192:ALA:HB2	1.81	0.46
1:A:210:SER:HB2	1:A:244:LEU:HD22	1.98	0.46
1:A:651:LEU:HG	1:A:653:LEU:HD11	1.98	0.46
2:B:153:GLN:HG3	2:B:154:THR:N	2.31	0.46
4:X:19:U:H3'	4:X:20:U:H2'	1.97	0.46
2:B:24:TRP:CD1	2:B:32:LEU:HD13	2.51	0.46
2:B:110:VAL:HG12	2:B:134:ALA:HB2	1.97	0.46
4:X:65:U:H2'	4:X:66:G:H8	1.80	0.46
1:A:116:SER:HG	1:A:200:TRP:HE1	1.64	0.46
2:B:69:LYS:HG2	2:B:75:SER:HA	1.98	0.46
2:B:71:ASP:OD1	2:B:72:GLY:N	2.48	0.46
3:C:341:SER:OG	3:C:344:ASP:OD2	2.20	0.46
1:A:455:ASP:O	1:A:478:ARG:NH2	2.48	0.45
3:C:16:MET:SD	3:C:17:LEU:HD12	2.55	0.45
3:C:455:LYS:HB2	3:C:513:HIS:CE1	2.51	0.45
4:X:12:G:O2'	4:X:13:U:P	2.74	0.45
2:B:367:LEU:HD11	2:B:381:GLU:HB3	1.98	0.45
1:A:41:LEU:HD11	1:A:85:VAL:HG11	1.97	0.45
1:A:97:LEU:O	1:A:99:THR:N	2.49	0.45
2:B:186:ARG:HD3	2:B:202:SER:OG	2.16	0.45
1:A:635:ILE:HG21	1:A:670:PHE:HZ	1.82	0.45
2:B:203:LEU:HD21	2:B:273:VAL:HG11	1.97	0.45
3:C:46:ALA:HA	3:C:51:LEU:HD13	1.99	0.45
4:X:58:A:C8	4:X:58:A:H5''	2.52	0.45
2:B:417:PRO:HG3	2:B:428:TRP:CE2	2.52	0.45
1:A:70:ARG:HB2	1:A:88:ALA:HB2	1.98	0.45
1:A:303:VAL:CG2	1:A:321:GLN:HB2	2.47	0.45
1:A:400:LEU:HD23	1:A:417:GLN:HG3	1.98	0.45
1:A:494:GLU:HG2	1:A:496:GLN:N	2.32	0.45
2:B:643:LYS:HB2	2:B:643:LYS:HE2	1.85	0.45
3:C:201:ILE:HD12	3:C:201:ILE:H	1.81	0.45
1:A:307:ASP:HB2	1:A:317:LYS:H	1.82	0.45
2:B:130:ILE:HB	2:B:142:TRP:HB2	1.97	0.45
2:B:176:PRO:HD2	2:B:192:GLN:HB3	1.98	0.45
2:B:616:THR:O	2:B:633:SER:OG	2.23	0.45
2:B:760:VAL:HG12	2:B:761:PRO:HD3	1.98	0.45
1:A:12:PHE:CE2	1:A:15:ILE:HG12	2.52	0.45
2:B:349:PHE:CE2	2:B:353:GLY:HA2	2.52	0.45
2:B:661:THR:HG23	2:B:665:THR:HB	1.98	0.45

Continued on next page...

Continued from previous page...

Atom-1	Atom-2	Interatomic distance (Å)	Clash overlap (Å)
2:B:368:TRP:HB3	2:B:378:TRP:HB3	1.99	0.44
3:C:15:MET:O	3:C:19:ILE:HD12	2.17	0.44
3:C:102:ILE:HD12	3:C:108:ILE:HG23	1.98	0.44
4:X:63:G:N3	4:X:63:G:H2'	2.30	0.44
1:A:132:THR:HG22	1:A:147:GLN:HG2	2.00	0.44
1:A:647:TYR:CE2	1:A:702:PRO:HG3	2.53	0.44
3:C:18:THR:O	3:C:22:VAL:HG23	2.16	0.44
3:C:231:HIS:O	3:C:235:MET:HG2	2.18	0.44
3:C:304:PHE:HZ	3:C:312:PRO:HG3	1.83	0.44
1:A:318:THR:O	1:A:337:SER:HA	2.16	0.44
1:A:204:GLY:O	1:A:226:ARG:NH1	2.40	0.44
3:C:14:LEU:HD13	3:C:17:LEU:HD22	1.98	0.44
3:C:42:LYS:HD2	3:C:55:PRO:HD2	1.99	0.44
1:A:539:ASP:OD1	1:A:540:GLU:N	2.50	0.44
1:A:575:ASP:OD2	1:A:577:GLN:HB2	2.17	0.44
2:B:411:THR:HG21	2:B:433:ARG:HH11	1.83	0.44
2:B:627:LYS:NZ	2:B:702:THR:HB	2.33	0.44
4:X:18:G:H1	4:X:55:C:H42	1.65	0.44
4:X:61:U:H2'	4:X:62:C:C6	2.53	0.44
1:A:323:TRP:CE2	1:A:332:LEU:HD13	2.53	0.43
2:B:644:GLN:HB3	2:B:654:VAL:HG23	2.00	0.43
1:A:563:ASN:ND2	1:A:619:GLU:OE2	2.51	0.43
3:C:353:LEU:HA	3:C:356:VAL:HG23	2.00	0.43
3:C:411:ILE:HG13	3:C:412:HIS:H	1.84	0.43
1:A:12:PHE:CE1	1:A:49:ARG:HG2	2.53	0.43
1:A:556:VAL:O	1:A:574:ALA:N	2.51	0.43
1:A:630:PHE:HB2	1:A:641:ILE:HD12	1.99	0.43
2:B:465:SER:OG	2:B:466:ALA:N	2.51	0.43
2:B:686:THR:HG21	2:B:696:TRP:HE1	1.83	0.43
2:B:734:PRO:HG3	2:B:826:LEU:HD22	2.01	0.43
1:A:293:LEU:HG	1:A:351:TRP:HD1	1.83	0.43
2:B:367:LEU:HD22	2:B:383:VAL:HG13	2.00	0.43
2:B:694:VAL:HG22	2:B:716:VAL:HG12	1.99	0.43
3:C:158:LEU:HG	4:X:36:G:H21	1.82	0.43
1:A:658:HIS:CE1	1:A:693:ARG:HG2	2.54	0.43
3:C:56:ARG:O	3:C:60:ILE:HG12	2.17	0.43
3:C:220:ILE:O	3:C:243:LEU:HD12	2.19	0.43
3:C:346:VAL:HG12	3:C:390:ARG:HE	1.82	0.43
2:B:24:TRP:NE1	2:B:32:LEU:HD13	2.34	0.43
3:C:526:THR:O	3:C:529:TYR:HB3	2.17	0.43
2:B:80:SER:HB3	2:B:90:TRP:HE1	1.83	0.43

Continued on next page...

Continued from previous page...

Atom-1	Atom-2	Interatomic distance (Å)	Clash overlap (Å)
3:C:145:PHE:CD1	3:C:192:ALA:HB2	2.53	0.43
1:A:384:ASN:OD1	1:A:703:GLN:HG2	2.19	0.43
2:B:91:GLU:HB3	2:B:99:LYS:HB2	1.99	0.43
3:C:131:GLU:HB2	4:X:34:U:O2	2.18	0.43
3:C:13:GLU:O	3:C:16:MET:HG3	2.18	0.42
4:X:2:G:H2'	4:X:3:C:O4'	2.19	0.42
2:B:729:CYS:HA	2:B:730:PRO:HD3	1.84	0.42
3:C:32:GLN:HB2	3:C:34:LYS:NZ	2.33	0.42
2:B:719:VAL:HG11	2:B:744:LEU:HD21	2.01	0.42
3:C:304:PHE:CZ	3:C:312:PRO:HG3	2.54	0.42
4:X:1:G:H2'	4:X:2:G:C8	2.54	0.42
2:B:401:GLU:O	2:B:417:PRO:HD3	2.19	0.42
4:X:60:C:H2'	4:X:61:U:C6	2.55	0.42
2:B:92:ILE:HD12	2:B:97:LEU:HA	2.02	0.42
2:B:317:ILE:HG23	2:B:330:GLU:HG3	2.00	0.42
3:C:260:ARG:HG3	3:C:262:HIS:CD2	2.55	0.42
3:C:295:GLU:O	3:C:298:ILE:HG22	2.19	0.42
4:X:7:A:N1	4:X:48:C:N4	2.67	0.42
2:B:672:ILE:HD11	2:B:686:THR:HB	2.02	0.42
3:C:113:PRO:HD2	3:C:126:SER:HA	2.01	0.42
1:A:474:LYS:HD3	1:A:475:VAL:N	2.35	0.42
1:A:580:LYS:HB2	1:A:593:TRP:HE3	1.85	0.42
2:B:375:PRO:HB2	2:B:376:ARG:NH1	2.34	0.42
1:A:620:CYS:SG	1:A:632:ILE:HG23	2.60	0.42
3:C:183:ASP:HA	3:C:186:ILE:HG22	2.00	0.42
3:C:246:GLY:HA2	3:C:284:HIS:HB2	2.02	0.42
2:B:65:GLN:HE22	2:B:114:HIS:CD2	2.38	0.41
2:B:729:CYS:SG	2:B:731:VAL:HG12	2.60	0.41
1:A:280:LEU:HA	1:A:281:PRO:HD3	1.91	0.41
2:B:16:ASN:O	2:B:17:ARG:HG3	2.20	0.41
3:C:244:GLU:HG2	3:C:282:VAL:HB	2.02	0.41
1:A:489:GLN:HG3	1:A:546:ASN:HA	2.02	0.41
2:B:355:MET:O	2:B:356:ILE:HG13	2.20	0.41
2:B:222:LEU:HD23	2:B:222:LEU:HA	1.89	0.41
3:C:233:SER:O	3:C:237:THR:HG23	2.20	0.41
1:A:293:LEU:HG	1:A:351:TRP:CD1	2.55	0.41
1:A:358:ARG:NH2	1:A:372:ASP:OD2	2.53	0.41
1:A:683:SER:HB2	1:A:688:LEU:HG	2.02	0.41
2:B:206:HIS:HE1	2:B:234:ARG:HB2	1.85	0.41
2:B:295:PHE:CG	2:B:352:ASP:HB3	2.56	0.41
2:B:797:LYS:HA	2:B:797:LYS:HD3	1.88	0.41

Continued on next page...

Continued from previous page...

Atom-1	Atom-2	Interatomic distance (Å)	Clash overlap (Å)
3:C:27:ILE:O	3:C:31:GLU:HG2	2.20	0.41
4:X:1:G:H22	4:X:72:U:H1'	1.86	0.41
4:X:22:G:H2'	4:X:23:C:O4'	2.20	0.41
4:X:47:U:C2	4:X:58:A:H1'	2.55	0.41
2:B:424:SER:OG	2:B:425:GLN:N	2.53	0.41
2:B:596:ILE:HG12	2:B:610:LEU:HB2	2.03	0.41
2:B:632:VAL:HG12	2:B:638:TRP:HB3	2.03	0.41
3:C:145:PHE:HE1	3:C:192:ALA:HA	1.86	0.41
3:C:354:ALA:HB2	3:C:396:ILE:HD12	2.02	0.41
3:C:451:LEU:HD12	3:C:474:GLU:O	2.20	0.41
2:B:91:GLU:HG3	2:B:98:LEU:HB3	2.02	0.41
2:B:745:GLU:O	2:B:781:ALA:HA	2.20	0.41
2:B:429:HIS:NE2	2:B:545:PRO:HG3	2.35	0.41
3:C:144:PRO:O	3:C:148:THR:HG22	2.20	0.41
3:C:186:ILE:HD12	3:C:186:ILE:HA	1.88	0.41
3:C:286:MET:CE	3:C:320:THR:HA	2.51	0.41
4:X:8:U:O2	4:X:15:A:N6	2.54	0.41
1:A:323:TRP:NE1	1:A:332:LEU:HD13	2.36	0.41
2:B:32:LEU:HD12	2:B:33:ALA:H	1.85	0.41
2:B:51:VAL:HG12	2:B:52:THR:HG22	2.02	0.40
2:B:731:VAL:HG13	2:B:733:HIS:HE1	1.86	0.40
3:C:42:LYS:O	3:C:46:ALA:HB2	2.20	0.40
3:C:425:ARG:HD3	3:C:427:TYR:OH	2.21	0.40
1:A:345:LYS:HE3	1:A:345:LYS:HB3	1.90	0.40
3:C:131:GLU:O	3:C:134:SER:HB2	2.20	0.40
1:A:252:LEU:HB3	1:A:267:PHE:HB3	2.03	0.40
2:B:753:THR:HB	2:B:767:THR:OG1	2.22	0.40
3:C:42:LYS:O	3:C:46:ALA:CB	2.70	0.40
1:A:460:ASP:OD1	1:A:460:ASP:N	2.53	0.40
2:B:332:VAL:HG11	2:B:378:TRP:HE1	1.87	0.40
1:A:136:MET:SD	1:A:142:PRO:HA	2.62	0.40

There are no symmetry-related clashes.

5.3 Torsion angles [i](#)

5.3.1 Protein backbone [i](#)

In the following table, the Percentiles column shows the percent Ramachandran outliers of the chain as a percentile score with respect to all PDB entries followed by that with respect to all EM entries.

The Analysed column shows the number of residues for which the backbone conformation was analysed, and the total number of residues.

Mol	Chain	Analysed	Favoured	Allowed	Outliers	Percentiles	
1	A	681/1332 (51%)	625 (92%)	56 (8%)	0	100	100
2	B	735/826 (89%)	662 (90%)	73 (10%)	0	100	100
3	C	536/581 (92%)	497 (93%)	39 (7%)	0	100	100
All	All	1952/2739 (71%)	1784 (91%)	168 (9%)	0	100	100

There are no Ramachandran outliers to report.

5.3.2 Protein sidechains [i](#)

In the following table, the Percentiles column shows the percent sidechain outliers of the chain as a percentile score with respect to all PDB entries followed by that with respect to all EM entries.

The Analysed column shows the number of residues for which the sidechain conformation was analysed, and the total number of residues.

Mol	Chain	Analysed	Rotameric	Outliers	Percentiles	
1	A	608/1183 (51%)	607 (100%)	1 (0%)	93	97
2	B	647/722 (90%)	645 (100%)	2 (0%)	92	97
3	C	468/498 (94%)	465 (99%)	3 (1%)	86	93
All	All	1723/2403 (72%)	1717 (100%)	6 (0%)	92	97

All (6) residues with a non-rotameric sidechain are listed below:

Mol	Chain	Res	Type
1	A	689	ARG
2	B	150	MET
2	B	376	ARG
3	C	250	VAL
3	C	402	ARG
3	C	434	GLU

Sometimes sidechains can be flipped to improve hydrogen bonding and reduce clashes. All (6) such sidechains are listed below:

Mol	Chain	Res	Type
1	A	489	GLN

Continued on next page...

Continued from previous page...

Mol	Chain	Res	Type
2	B	23	ASN
2	B	348	GLN
2	B	370	GLN
2	B	550	HIS
3	C	495	GLN

5.3.3 RNA [i](#)

Mol	Chain	Analysed	Backbone Outliers	Pucker Outliers
4	X	74/75 (98%)	28 (37%)	2 (2%)

All (28) RNA backbone outliers are listed below:

Mol	Chain	Res	Type
4	X	3	C
4	X	4	C
4	X	10	G
4	X	13	U
4	X	14	A
4	X	15	A
4	X	16	U
4	X	17	G
4	X	18	G
4	X	19	U
4	X	20	U
4	X	21	A
4	X	31	A
4	X	35	U
4	X	36	G
4	X	37	A
4	X	45	G
4	X	47	U
4	X	48	C
4	X	54	U
4	X	57	A
4	X	58	A
4	X	64	G
4	X	65	U
4	X	71	C
4	X	72	U
4	X	73	C

Continued on next page...

Continued from previous page...

Mol	Chain	Res	Type
4	X	75	A

All (2) RNA pucker outliers are listed below:

Mol	Chain	Res	Type
4	X	12	G
4	X	57	A

5.4 Non-standard residues in protein, DNA, RNA chains [i](#)

There are no non-standard protein/DNA/RNA residues in this entry.

5.5 Carbohydrates [i](#)

There are no monosaccharides in this entry.

5.6 Ligand geometry [i](#)

Of 6 ligands modelled in this entry, 2 are monoatomic - leaving 4 for Mogul analysis.

In the following table, the Counts columns list the number of bonds (or angles) for which Mogul statistics could be retrieved, the number of bonds (or angles) that are observed in the model and the number of bonds (or angles) that are defined in the Chemical Component Dictionary. The Link column lists molecule types, if any, to which the group is linked. The Z score for a bond length (or angle) is the number of standard deviations the observed value is removed from the expected value. A bond length (or angle) with $|Z| > 2$ is considered an outlier worth inspection. RMSZ is the root-mean-square of all Z scores of the bond lengths (or angles).

Mol	Type	Chain	Res	Link	Bond lengths			Bond angles		
					Counts	RMSZ	# Z > 2	Counts	RMSZ	# Z > 2
5	SF4	C	601	3,8	0,12,12	-	-	-	-	-
8	MET	C	604	5	7,8,8	0.86	1 (14%)	7,9,9	1.34	2 (28%)
7	A2U	C	603	-	44,52,52	3.21	11 (25%)	55,77,77	1.24	6 (10%)
6	5AD	C	602	-	17,20,20	0.89	1 (5%)	15,30,30	0.91	0

In the following table, the Chirals column lists the number of chiral outliers, the number of chiral centers analysed, the number of these observed in the model and the number defined in the Chemical Component Dictionary. Similar counts are reported in the Torsion and Rings columns. '·' means no outliers of that kind were identified.

Mol	Type	Chain	Res	Link	Chirals	Torsions	Rings
6	5AD	C	602	-	-	0/0/20/20	0/3/3/3
8	MET	C	604	5	-	0/8/8/8	-
5	SF4	C	601	3,8	-	-	0/6/5/5
7	A2U	C	603	-	-	18/46/66/66	0/3/3/3

All (13) bond length outliers are listed below:

Mol	Chain	Res	Type	Atoms	Z	Observed(Å)	Ideal(Å)
7	C	603	A2U	C43-C32	-10.52	1.37	1.53
7	C	603	A2U	O31-C32	8.45	1.52	1.41
7	C	603	A2U	C45-C30	-7.55	1.32	1.52
7	C	603	A2U	C12-N11	7.01	1.48	1.33
7	C	603	A2U	O31-C30	6.86	1.60	1.45
7	C	603	A2U	C07-N06	6.01	1.47	1.33
7	C	603	A2U	C43-C45	4.66	1.63	1.52
7	C	603	A2U	C37-N38	3.75	1.47	1.34
7	C	603	A2U	P47-O46	3.38	1.65	1.59
6	C	602	5AD	C8-N7	-2.33	1.30	1.34
7	C	603	A2U	P25-O28	2.24	1.68	1.59
8	C	604	MET	OXT-C	-2.16	1.23	1.30
7	C	603	A2U	P21-O20	2.08	1.67	1.59

All (8) bond angle outliers are listed below:

Mol	Chain	Res	Type	Atoms	Z	Observed(°)	Ideal(°)
7	C	603	A2U	N41-C40-N39	-4.05	122.34	128.68
7	C	603	A2U	C45-C43-C32	2.91	106.33	99.89
7	C	603	A2U	C43-C45-C30	2.79	108.16	103.22
8	C	604	MET	OXT-C-O	-2.68	118.01	124.09
7	C	603	A2U	C04-S03-C02	2.49	108.87	101.02
7	C	603	A2U	C09-C07-N06	2.29	120.27	116.42
7	C	603	A2U	P25-O24-P21	-2.28	125.01	132.83
8	C	604	MET	OXT-C-CA	2.25	121.06	113.38

There are no chirality outliers.

All (18) torsion outliers are listed below:

Mol	Chain	Res	Type	Atoms
7	C	603	A2U	C17-C16-C19-O20
7	C	603	A2U	C14-C16-C19-O20
7	C	603	A2U	C19-O20-P21-O22
7	C	603	A2U	C19-O20-P21-O24

Continued on next page...

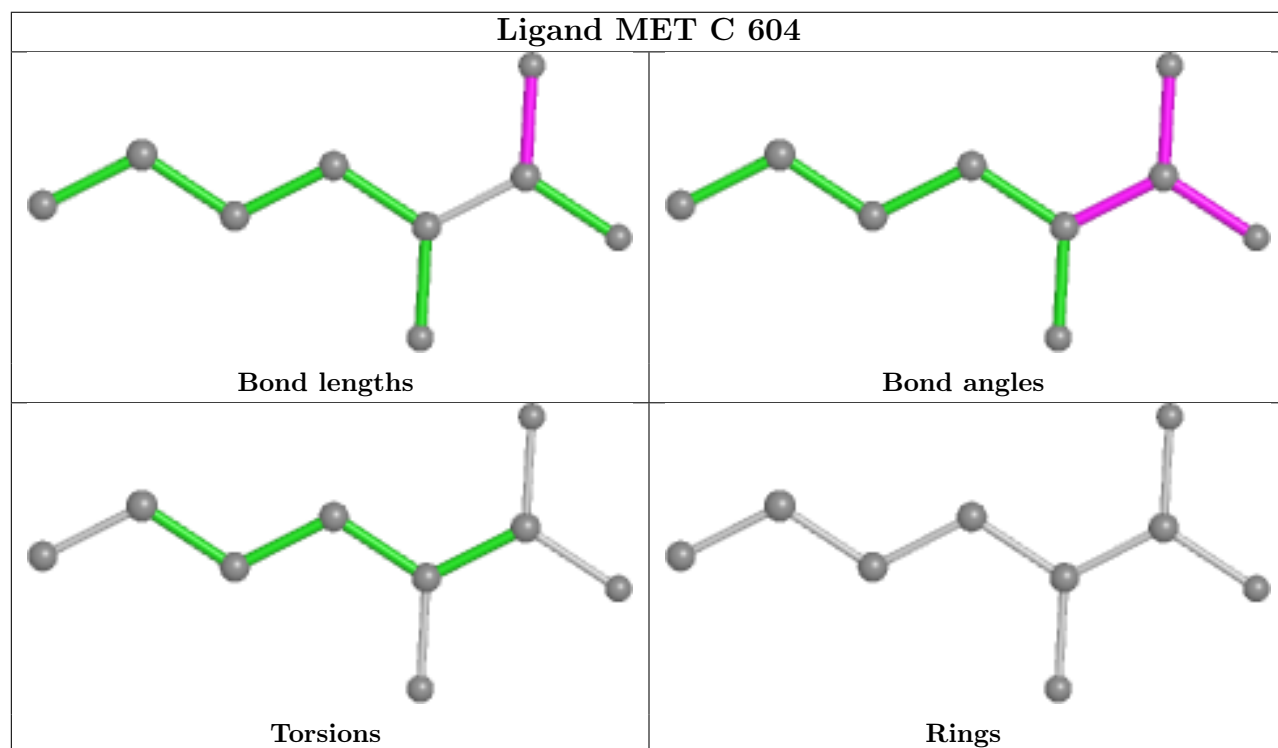
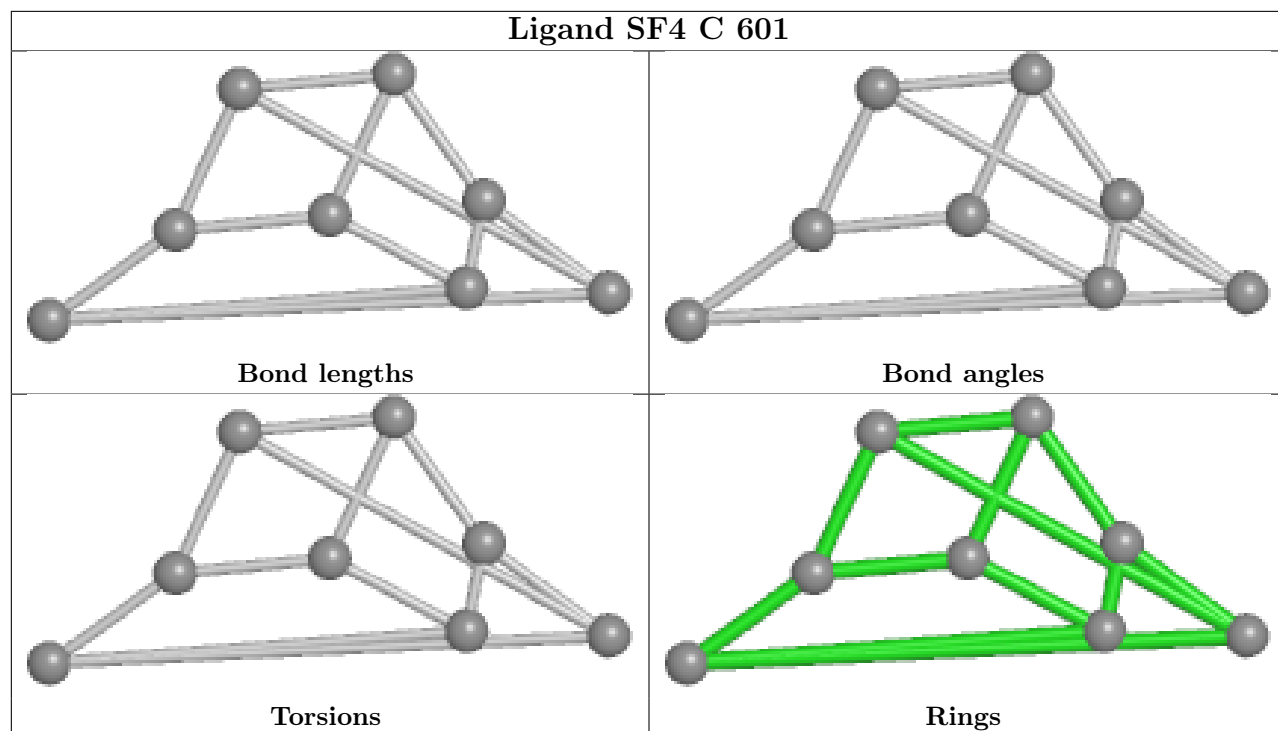
Continued from previous page...

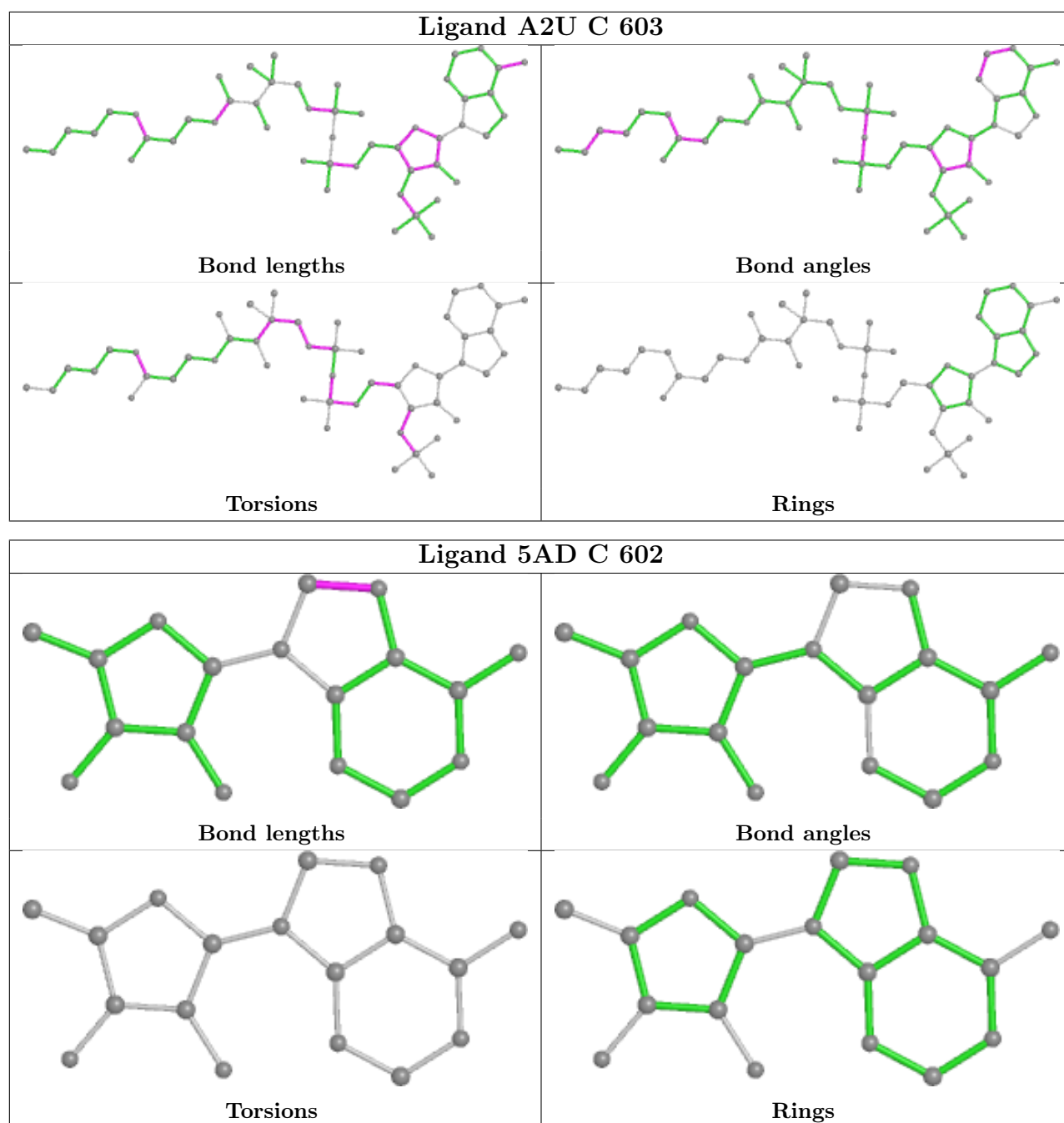
Mol	Chain	Res	Type	Atoms
7	C	603	A2U	C45-O46-P47-O50
7	C	603	A2U	C09-C07-N06-C05
7	C	603	A2U	O28-C29-C30-O31
7	C	603	A2U	C30-C45-O46-P47
7	C	603	A2U	O08-C07-N06-C05
7	C	603	A2U	O28-C29-C30-C45
7	C	603	A2U	C18-C16-C19-O20
7	C	603	A2U	C43-C45-O46-P47
7	C	603	A2U	P21-O24-P25-O28
7	C	603	A2U	C12-C14-C16-C17
7	C	603	A2U	C45-O46-P47-O48
7	C	603	A2U	C16-C19-O20-P21
7	C	603	A2U	C29-O28-P25-O26
7	C	603	A2U	C12-C14-C16-C19

There are no ring outliers.

No monomer is involved in short contacts.

The following is a two-dimensional graphical depiction of Mogul quality analysis of bond lengths, bond angles, torsion angles, and ring geometry for all instances of the Ligand of Interest. In addition, ligands with molecular weight > 250 and outliers as shown on the validation Tables will also be included. For torsion angles, if less than 5% of the Mogul distribution of torsion angles is within 10 degrees of the torsion angle in question, then that torsion angle is considered an outlier. Any bond that is central to one or more torsion angles identified as an outlier by Mogul will be highlighted in the graph. For rings, the root-mean-square deviation (RMSD) between the ring in question and similar rings identified by Mogul is calculated over all ring torsion angles. If the average RMSD is greater than 60 degrees and the minimal RMSD between the ring in question and any Mogul-identified rings is also greater than 60 degrees, then that ring is considered an outlier. The outliers are highlighted in purple. The color gray indicates Mogul did not find sufficient equivalents in the CSD to analyse the geometry.





5.7 Other polymers [i](#)

There are no such residues in this entry.

5.8 Polymer linkage issues [i](#)

There are no chain breaks in this entry.

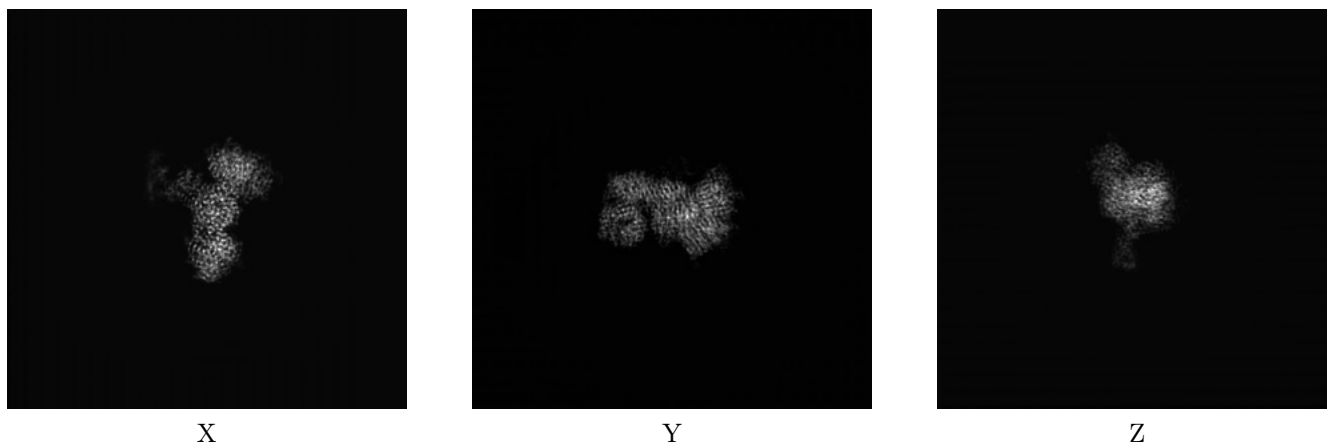
6 Map visualisation [i](#)

This section contains visualisations of the EMDB entry EMD-17926. These allow visual inspection of the internal detail of the map and identification of artifacts.

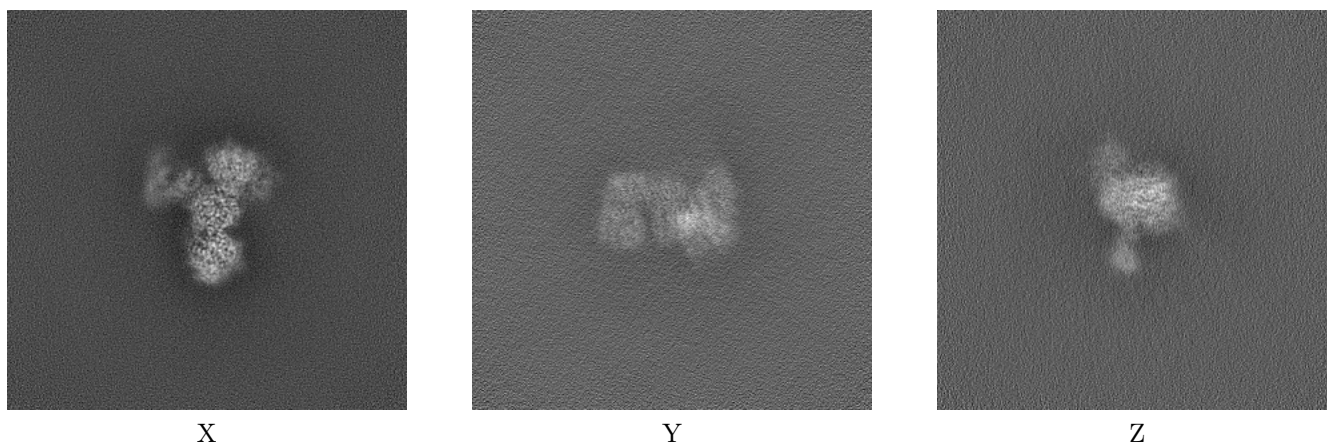
Images derived from a raw map, generated by summing the deposited half-maps, are presented below the corresponding image components of the primary map to allow further visual inspection and comparison with those of the primary map.

6.1 Orthogonal projections [i](#)

6.1.1 Primary map



6.1.2 Raw map



The images above show the map projected in three orthogonal directions.

6.2 Central slices [i](#)

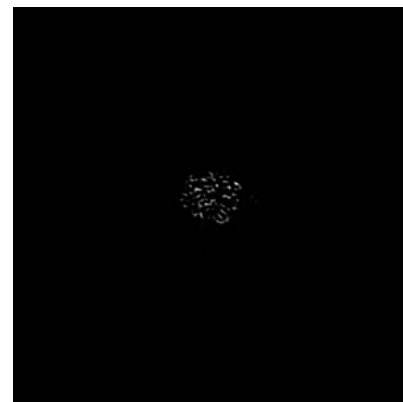
6.2.1 Primary map



X Index: 230

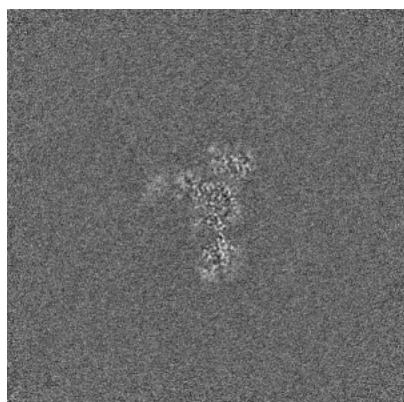


Y Index: 230

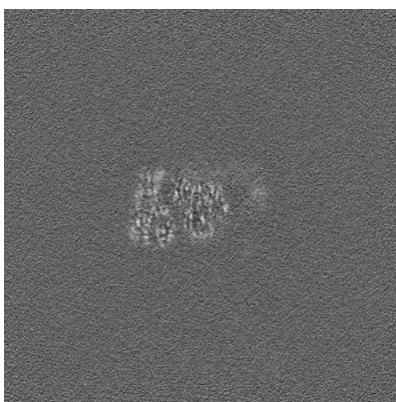


Z Index: 230

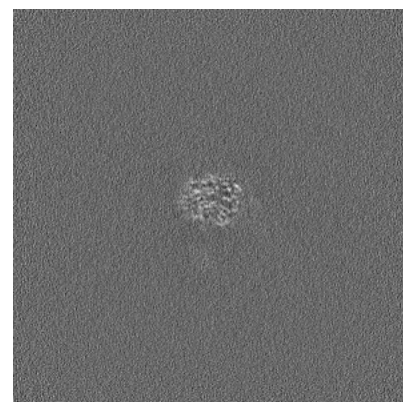
6.2.2 Raw map



X Index: 230



Y Index: 230



Z Index: 230

The images above show central slices of the map in three orthogonal directions.

6.3 Largest variance slices [i](#)

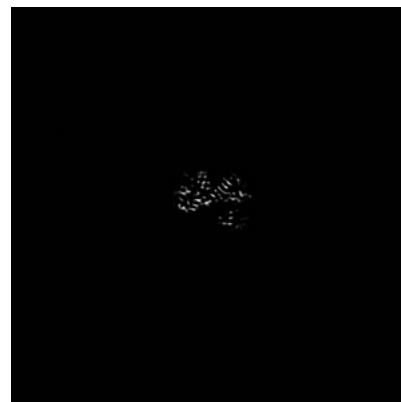
6.3.1 Primary map



X Index: 246

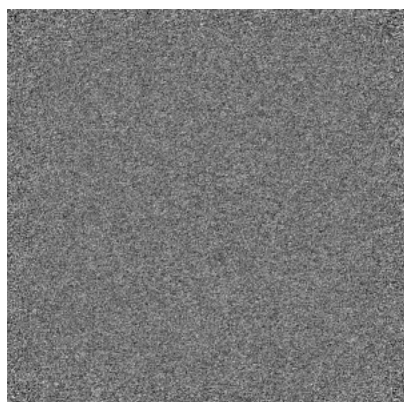


Y Index: 247

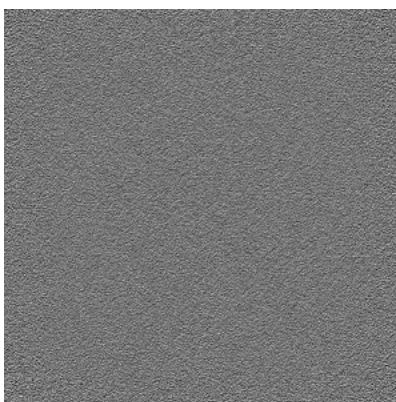


Z Index: 189

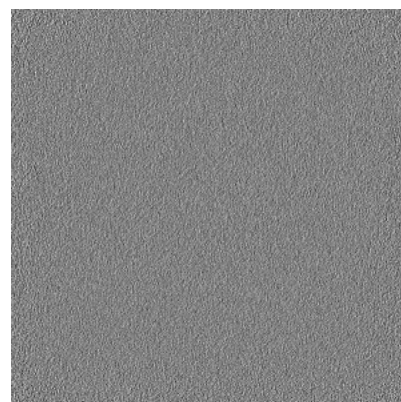
6.3.2 Raw map



X Index: 0



Y Index: 0

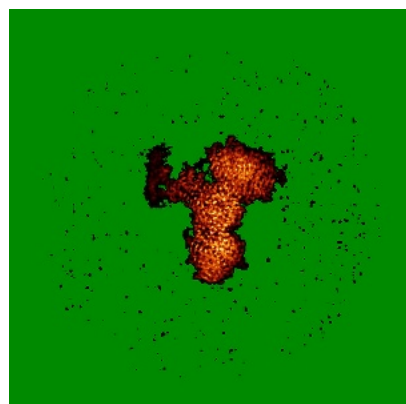


Z Index: 459

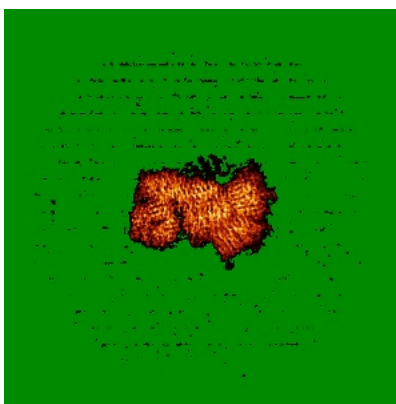
The images above show the largest variance slices of the map in three orthogonal directions.

6.4 Orthogonal standard-deviation projections (False-color) [i](#)

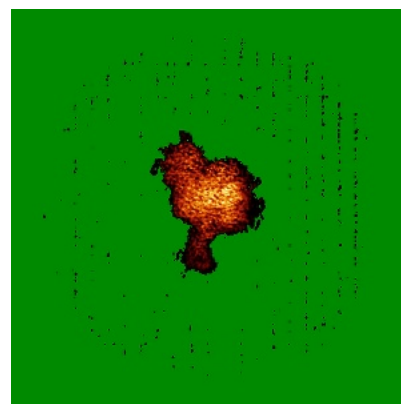
6.4.1 Primary map



X

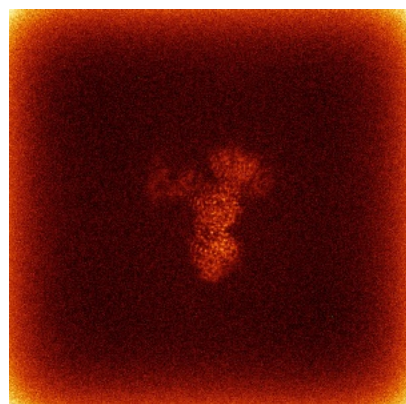


Y

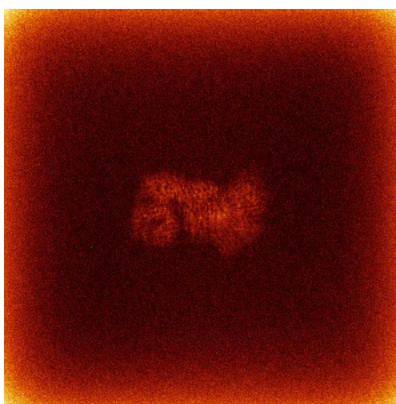


Z

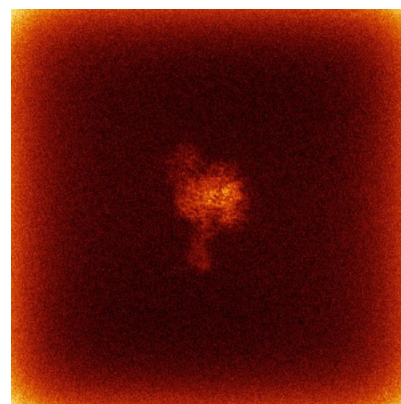
6.4.2 Raw map



X



Y

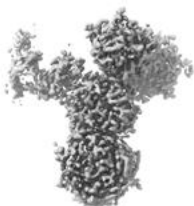


Z

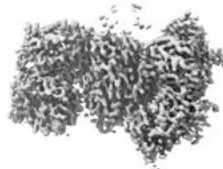
The images above show the map standard deviation projections with false color in three orthogonal directions. Minimum values are shown in green, max in blue, and dark to light orange shades represent small to large values respectively.

6.5 Orthogonal surface views [i](#)

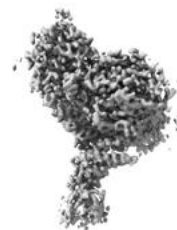
6.5.1 Primary map



X



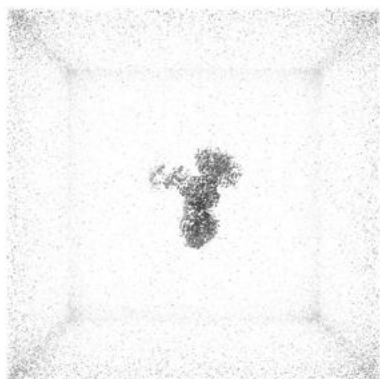
Y



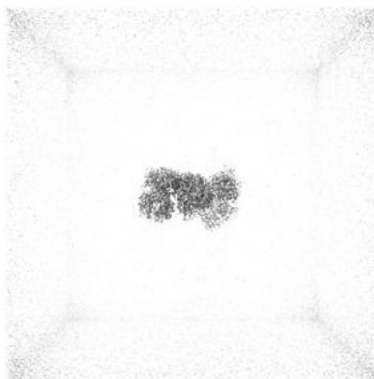
Z

The images above show the 3D surface view of the map at the recommended contour level 0.11. These images, in conjunction with the slice images, may facilitate assessment of whether an appropriate contour level has been provided.

6.5.2 Raw map



X



Y



Z

These images show the 3D surface of the raw map. The raw map's contour level was selected so that its surface encloses the same volume as the primary map does at its recommended contour level.

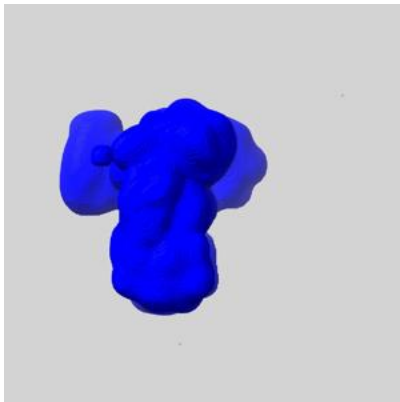
6.6 Mask visualisation [i](#)

This section shows the 3D surface view of the primary map at 50% transparency overlaid with the specified mask at 0% transparency

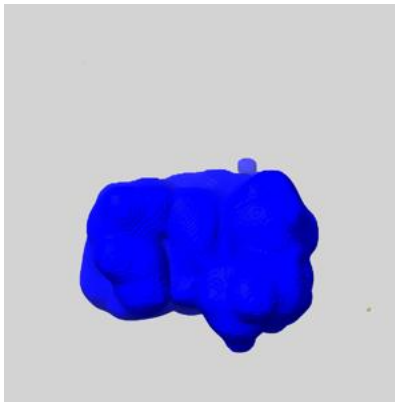
A mask typically either:

- Encompasses the whole structure
- Separates out a domain, a functional unit, a monomer or an area of interest from a larger structure

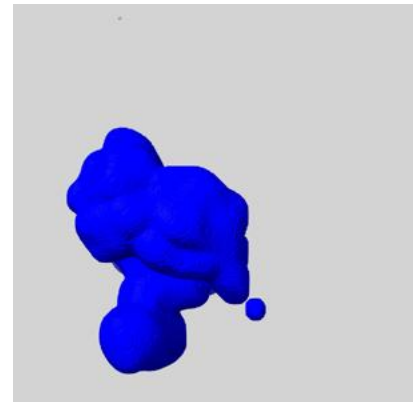
6.6.1 emd_17926_msk_1.map [i](#)



X



Y

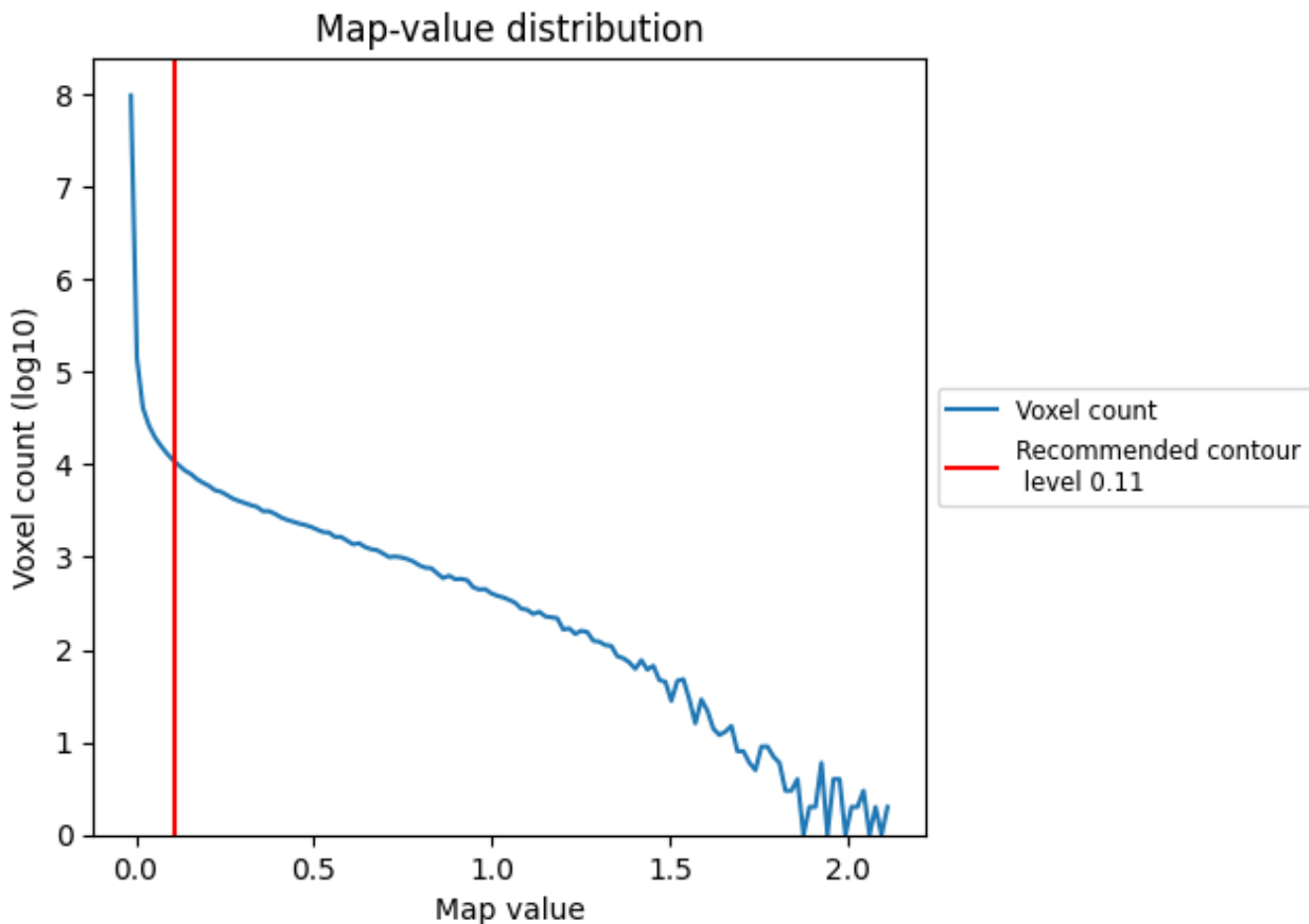


Z

7 Map analysis [i](#)

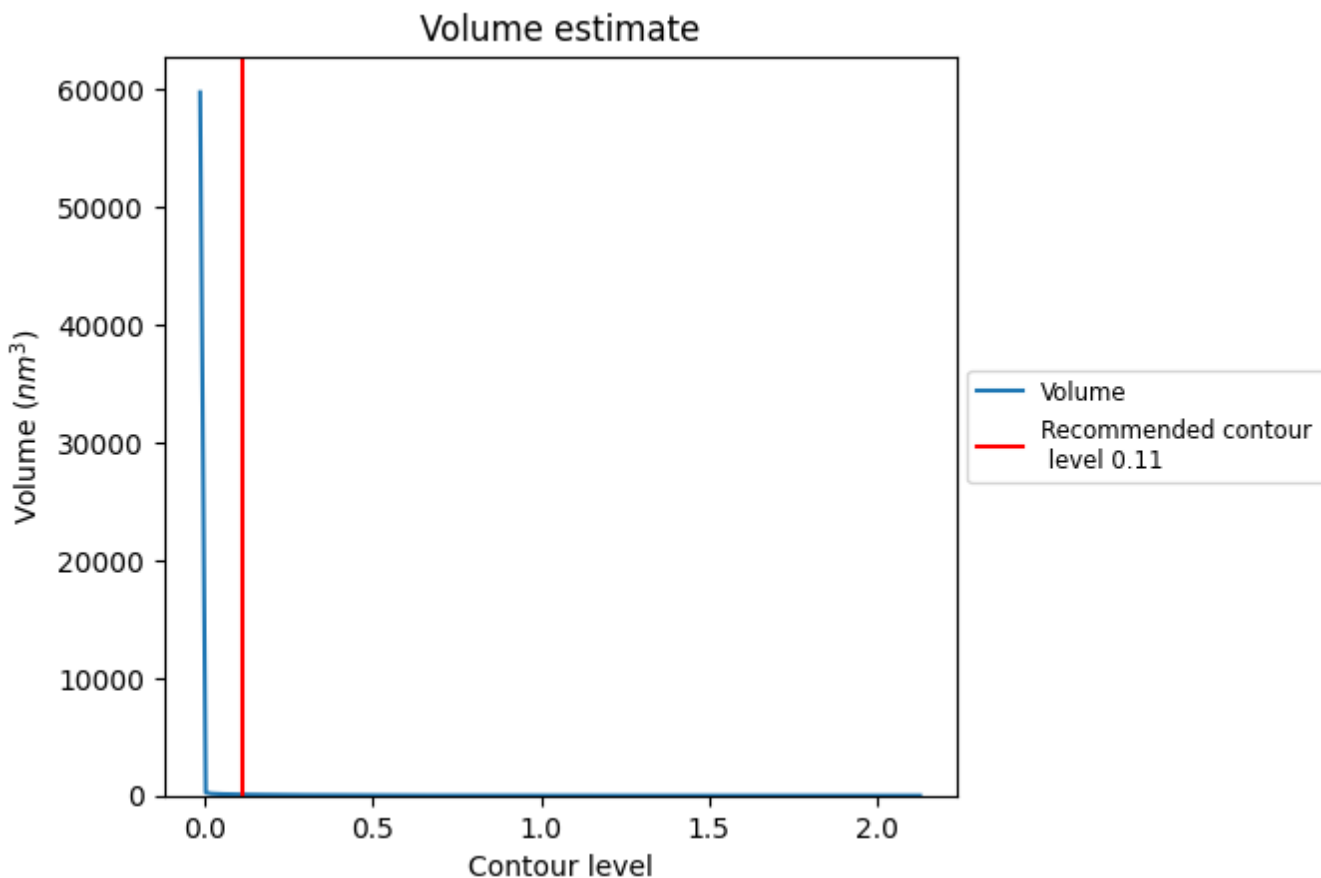
This section contains the results of statistical analysis of the map.

7.1 Map-value distribution [i](#)



The map-value distribution is plotted in 128 intervals along the x-axis. The y-axis is logarithmic. A spike in this graph at zero usually indicates that the volume has been masked.

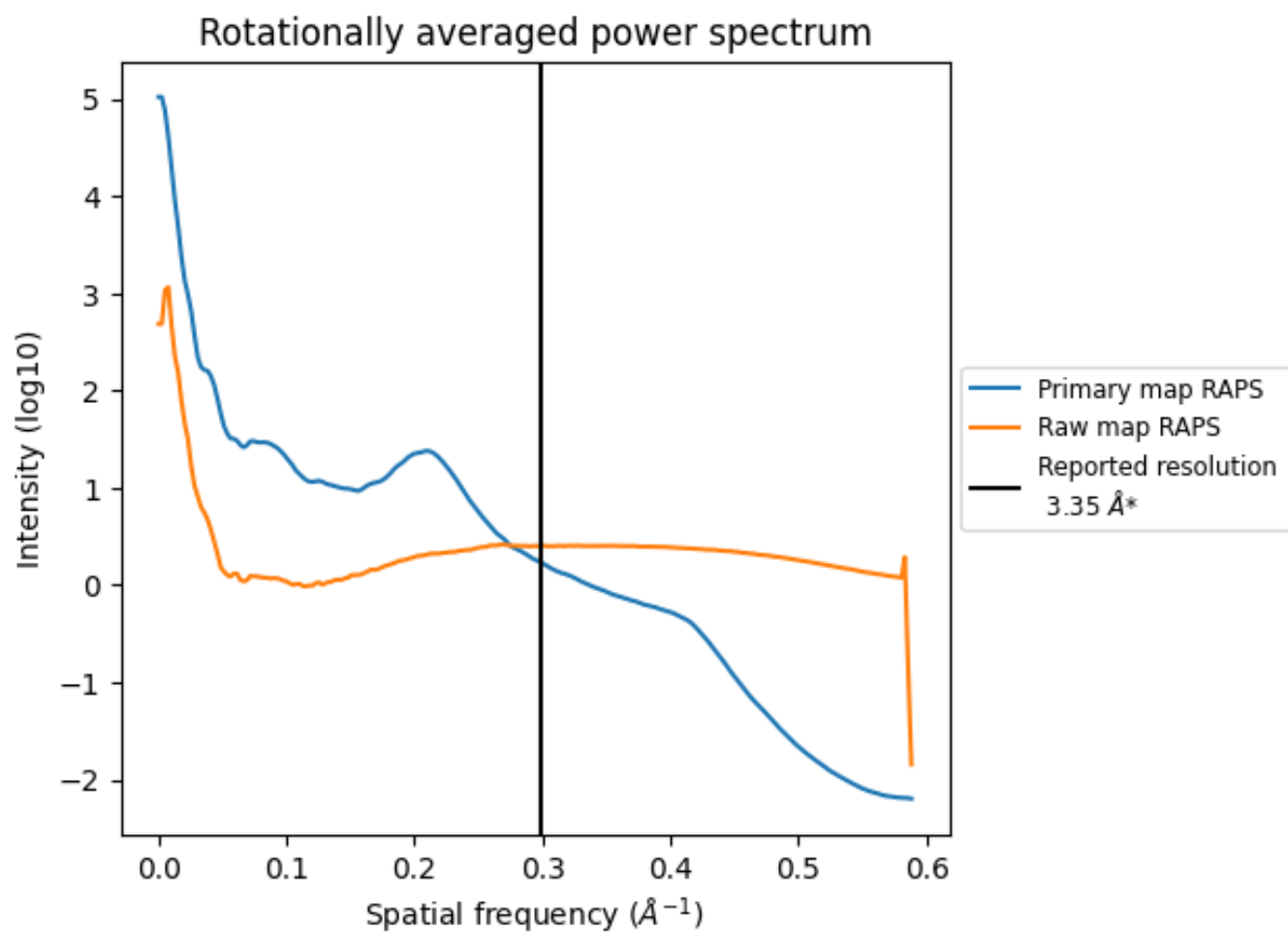
7.2 Volume estimate [i](#)



The volume at the recommended contour level is 90 nm³; this corresponds to an approximate mass of 81 kDa.

The volume estimate graph shows how the enclosed volume varies with the contour level. The recommended contour level is shown as a vertical line and the intersection between the line and the curve gives the volume of the enclosed surface at the given level.

7.3 Rotationally averaged power spectrum i

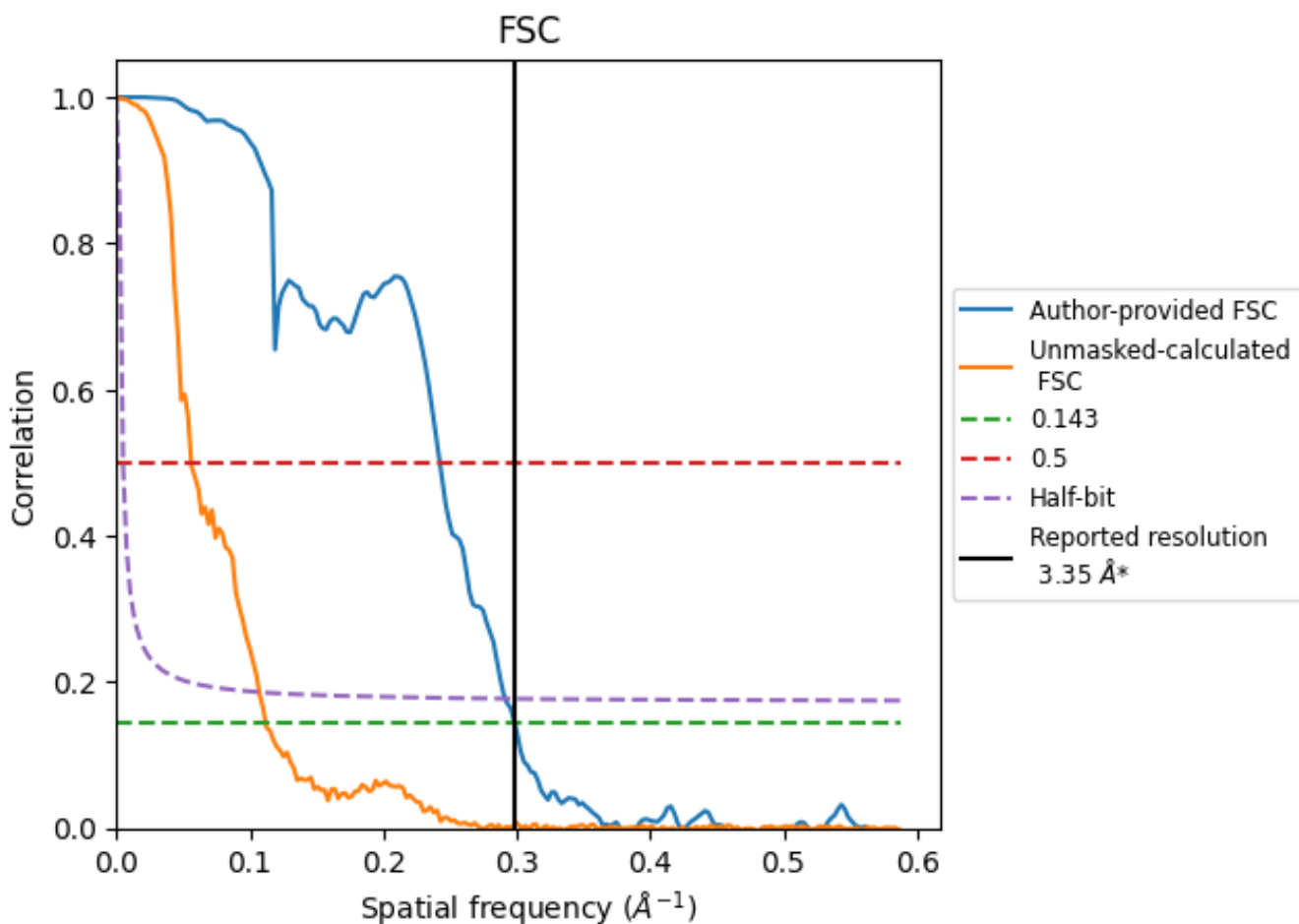


*Reported resolution corresponds to spatial frequency of 0.299 Å⁻¹

8 Fourier-Shell correlation [i](#)

Fourier-Shell Correlation (FSC) is the most commonly used method to estimate the resolution of single-particle and subtomogram-averaged maps. The shape of the curve depends on the imposed symmetry, mask and whether or not the two 3D reconstructions used were processed from a common reference. The reported resolution is shown as a black line. A curve is displayed for the half-bit criterion in addition to lines showing the 0.143 gold standard cut-off and 0.5 cut-off.

8.1 FSC [i](#)



*Reported resolution corresponds to spatial frequency of 0.299 Å⁻¹

8.2 Resolution estimates [i](#)

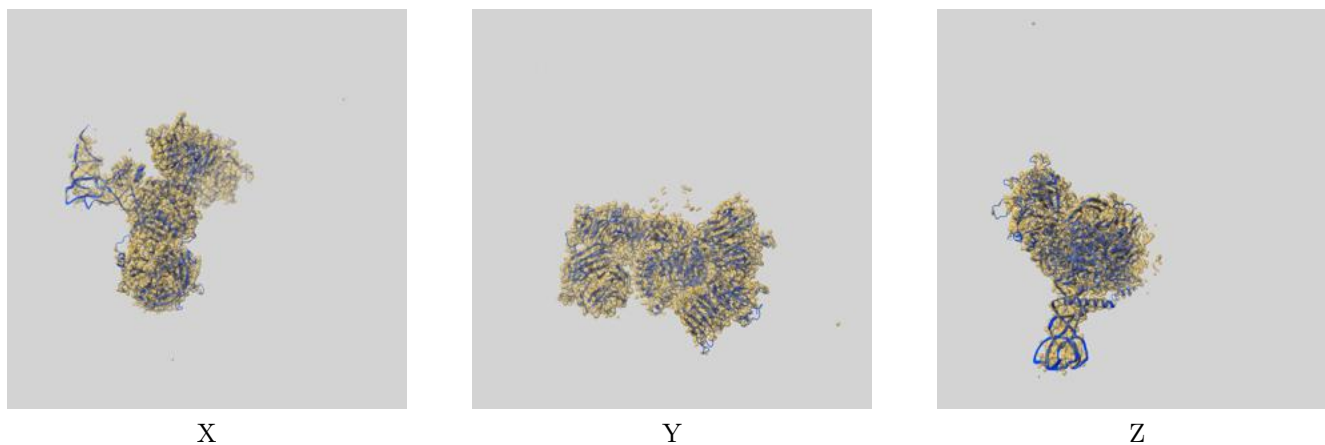
Resolution estimate (Å)	Estimation criterion (FSC cut-off)		
	0.143	0.5	Half-bit
Reported by author	3.35	-	-
Author-provided FSC curve	3.35	4.13	3.43
Unmasked-calculated*	8.94	17.83	9.34

*Resolution estimate based on FSC curve calculated by comparison of deposited half-maps. The value from deposited half-maps intersecting FSC 0.143 CUT-OFF 8.94 differs from the reported value 3.35 by more than 10 %

9 Map-model fit [i](#)

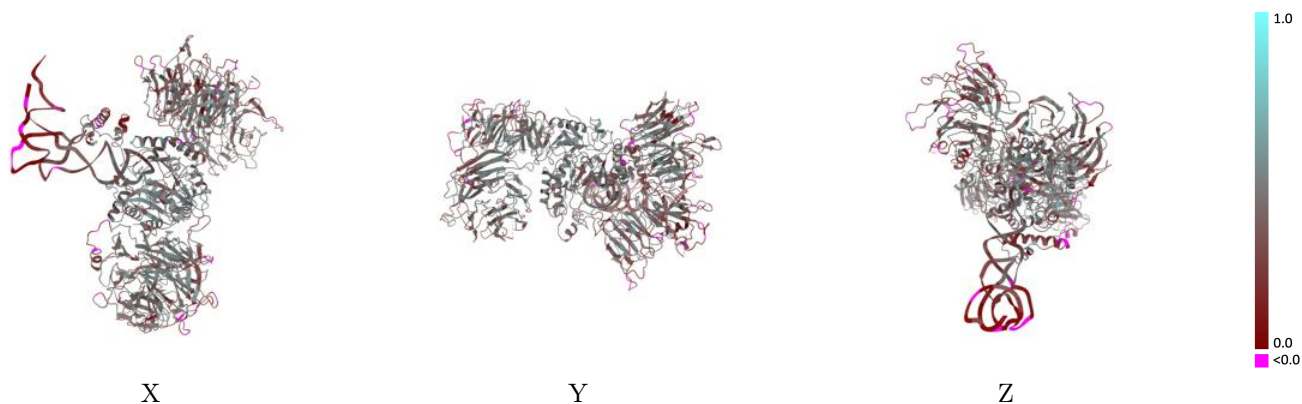
This section contains information regarding the fit between EMDB map EMD-17926 and PDB model 8PTZ. Per-residue inclusion information can be found in section 3 on page 8.

9.1 Map-model overlay [i](#)



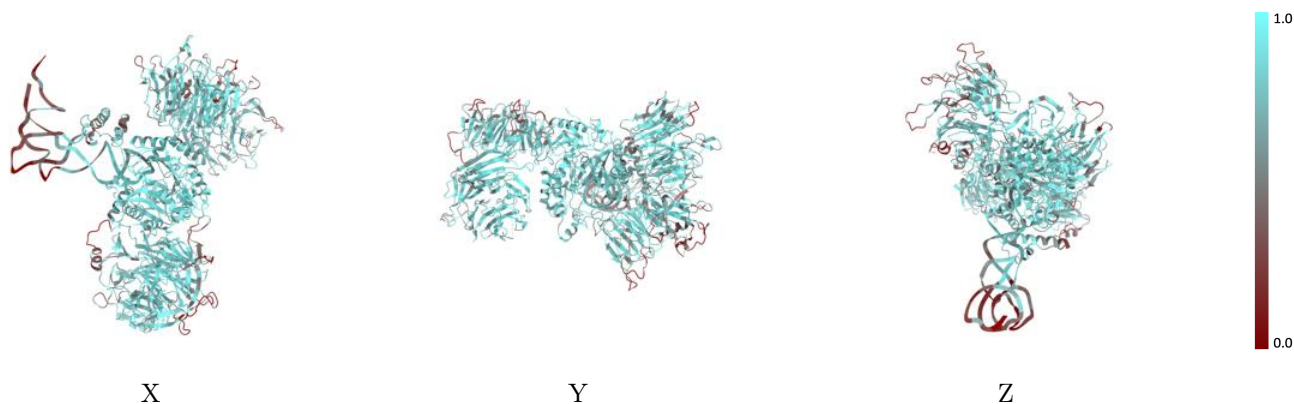
The images above show the 3D surface view of the map at the recommended contour level 0.11 at 50% transparency in yellow overlaid with a ribbon representation of the model coloured in blue. These images allow for the visual assessment of the quality of fit between the atomic model and the map.

9.2 Q-score mapped to coordinate model [i](#)



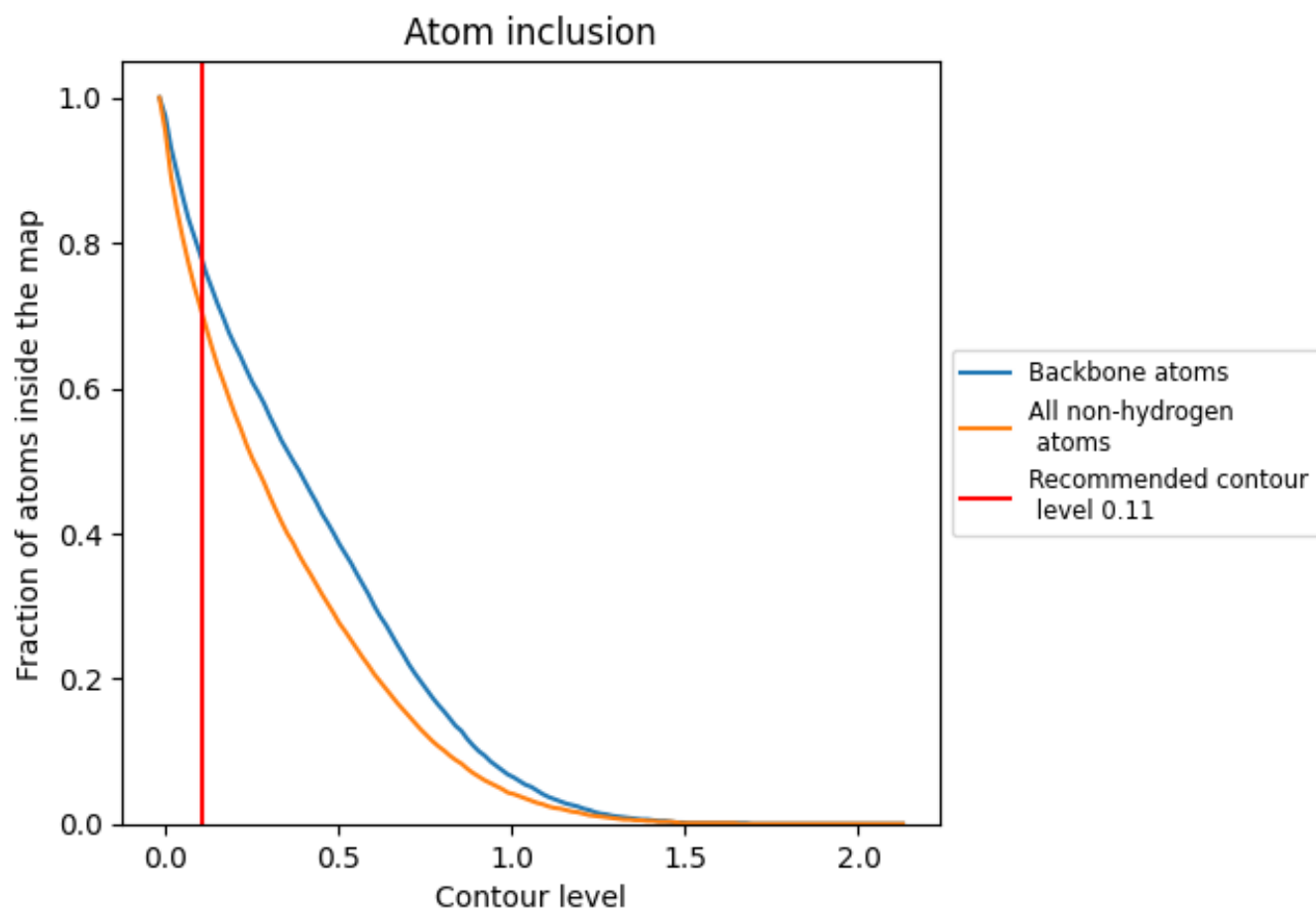
The images above show the model with each residue coloured according to its Q-score. This shows their resolvability in the map with higher Q-score values reflecting better resolvability. Please note: Q-score is calculating the resolvability of atoms, and thus high values are only expected at resolutions at which atoms can be resolved. Low Q-score values may therefore be expected for many entries.

9.3 Atom inclusion mapped to coordinate model [i](#)



The images above show the model with each residue coloured according to its atom inclusion. This shows to what extent they are inside the map at the recommended contour level (0.11).











9.4 Atom inclusion [i](#)



At the recommended contour level, 78% of all backbone atoms, 70% of all non-hydrogen atoms, are inside the map.

9.5 Map-model fit summary

The table lists the average atom inclusion at the recommended contour level (0.11) and Q-score for the entire model and for each chain.

Chain	Atom inclusion	Q-score
All	 0.7010	 0.3860
A	 0.7170	 0.4060
B	 0.6800	 0.3740
C	 0.7880	 0.4360
X	 0.4850	 0.2240

