



# Full wwPDB X-ray Structure Validation Report ⓘ

Aug 21, 2023 – 01:49 PM EDT

PDB ID : 2PQM  
Title : Crystal structure of Cysteine Synthase (OASS) from Entamoeba histolytica at 1.86 Å resolution  
Authors : Chinthalapudi, K.; Alam, N.; Gourinath, S.  
Deposited on : 2007-05-02  
Resolution : 1.86 Å (reported)

This is a Full wwPDB X-ray Structure Validation Report for a publicly released PDB entry.

We welcome your comments at [validation@mail.wwpdb.org](mailto:validation@mail.wwpdb.org)

A user guide is available at

<https://www.wwpdb.org/validation/2017/XrayValidationReportHelp>

with specific help available everywhere you see the ⓘ symbol.

The types of validation reports are described at

<http://www.wwpdb.org/validation/2017/FAQs#types>.

---

The following versions of software and data (see [references ⓘ](#)) were used in the production of this report:

MolProbity : 4.02b-467  
Mogul : 1.8.5 (274361), CSD as541be (2020)  
Xtriage (Phenix) : 1.13  
EDS : 2.35  
Percentile statistics : 20191225.v01 (using entries in the PDB archive December 25th 2019)  
Refmac : 5.8.0158  
CCP4 : 7.0.044 (Gargrove)  
Ideal geometry (proteins) : Engh & Huber (2001)  
Ideal geometry (DNA, RNA) : Parkinson et al. (1996)  
Validation Pipeline (wwPDB-VP) : 2.35

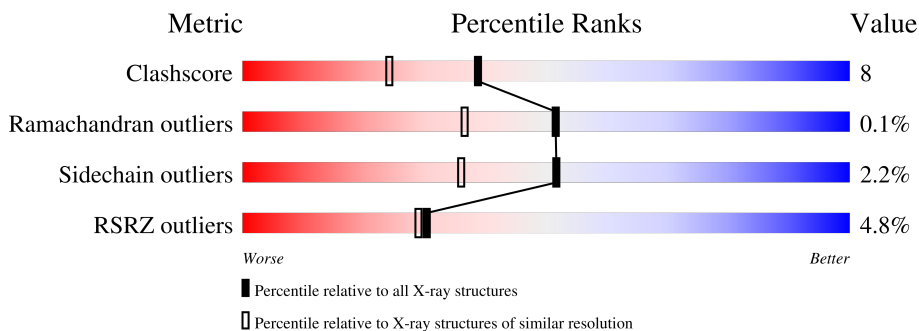
# 1 Overall quality at a glance

The following experimental techniques were used to determine the structure:

*X-RAY DIFFRACTION*

The reported resolution of this entry is 1.86 Å.

Percentile scores (ranging between 0-100) for global validation metrics of the entry are shown in the following graphic. The table shows the number of entries on which the scores are based.



Metric	Whole archive (#Entries)	Similar resolution (#Entries, resolution range(Å))
Clashscore	141614	2625 (1.86-1.86)
Ramachandran outliers	138981	2592 (1.86-1.86)
Sidechain outliers	138945	2592 (1.86-1.86)
RSRZ outliers	127900	2436 (1.86-1.86)

The table below summarises the geometric issues observed across the polymeric chains and their fit to the electron density. The red, orange, yellow and green segments of the lower bar indicate the fraction of residues that contain outliers for  $\geq 3$ , 2, 1 and 0 types of geometric quality criteria respectively. A grey segment represents the fraction of residues that are not modelled. The numeric value for each fraction is indicated below the corresponding segment, with a dot representing fractions  $\leq 5\%$ . The upper red bar (where present) indicates the fraction of residues that have poor fit to the electron density. The numeric value is given above the bar.

Mol	Chain	Length	Quality of chain
1	A	343	 3% 85% 12% ..
1	B	343	 6% 88% 8% ..

The following table lists non-polymeric compounds, carbohydrate monomers and non-standard residues in protein, DNA, RNA chains that are outliers for geometric or electron-density-fit criteria:

Mol	Type	Chain	Res	Chirality	Geometry	Clashes	Electron density
2	SO4	A	344	-	-	X	-

## 2 Entry composition

There are 4 unique types of molecules in this entry. The entry contains 5513 atoms, of which 0 are hydrogens and 0 are deuteriums.

In the tables below, the ZeroOcc column contains the number of atoms modelled with zero occupancy, the AltConf column contains the number of residues with at least one atom in alternate conformation and the Trace column contains the number of residues modelled with at most 2 atoms.

- Molecule 1 is a protein called Cysteine synthase.

Mol	Chain	Residues	Atoms					ZeroOcc	AltConf	Trace
			Total	C	N	O	S			
1	A	338	2573	1633	435	491	14	0	0	0
1	B	334	2544	1618	430	482	14	0	0	0

There are 12 discrepancies between the modelled and reference sequences:

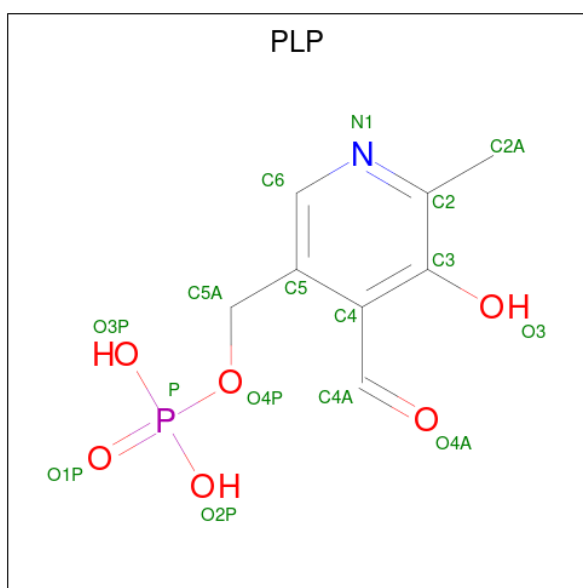
Chain	Residue	Modelled	Actual	Comment	Reference
A	338	HIS	-	expression tag	UNP O15570
A	339	HIS	-	expression tag	UNP O15570
A	340	HIS	-	expression tag	UNP O15570
A	341	HIS	-	expression tag	UNP O15570
A	342	HIS	-	expression tag	UNP O15570
A	343	HIS	-	expression tag	UNP O15570
B	338	HIS	-	expression tag	UNP O15570
B	339	HIS	-	expression tag	UNP O15570
B	340	HIS	-	expression tag	UNP O15570
B	341	HIS	-	expression tag	UNP O15570
B	342	HIS	-	expression tag	UNP O15570
B	343	HIS	-	expression tag	UNP O15570

- Molecule 2 is SULFATE ION (three-letter code: SO4) (formula: O<sub>4</sub>S).



Mol	Chain	Residues	Atoms				ZeroOcc	AltConf
2	A	1	Total	O	S	0	0	
			5	4	1			
2	B	1	Total	O	S	0	0	
			5	4	1			

- Molecule 3 is PYRIDOXAL-5'-PHOSPHATE (three-letter code: PLP) (formula: C<sub>8</sub>H<sub>10</sub>NO<sub>6</sub>P).



Mol	Chain	Residues	Atoms					ZeroOcc	AltConf
3	A	1	Total	C	N	O	P	0	0
			15	8	1	5	1		
3	B	1	Total	C	N	O	P	0	0
			15	8	1	5	1		

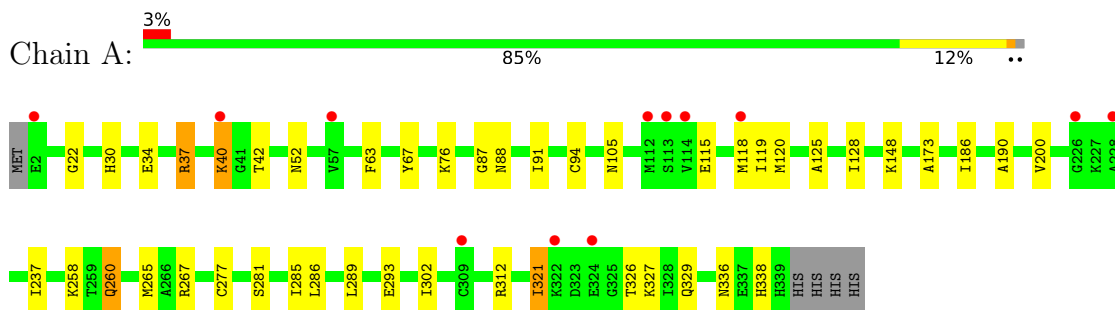
- Molecule 4 is water.

Mol	Chain	Residues	Atoms		ZeroOcc	AltConf
4	A	171	Total 171	O 171	0	0
4	B	185	Total 185	O 185	0	0

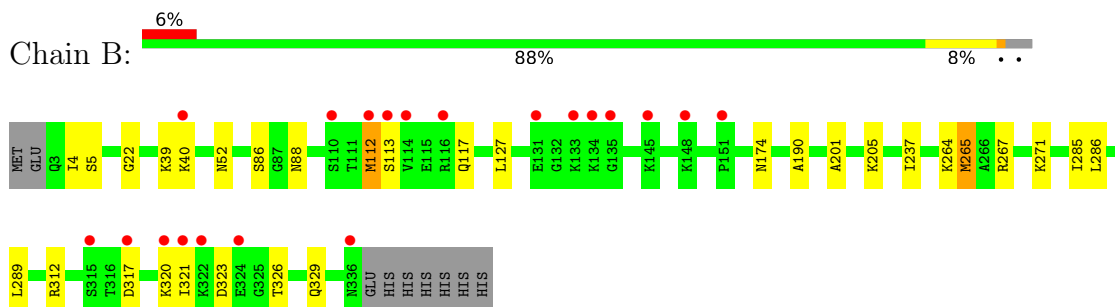
### 3 Residue-property plots [i](#)

These plots are drawn for all protein, RNA, DNA and oligosaccharide chains in the entry. The first graphic for a chain summarises the proportions of the various outlier classes displayed in the second graphic. The second graphic shows the sequence view annotated by issues in geometry and electron density. Residues are color-coded according to the number of geometric quality criteria for which they contain at least one outlier: green = 0, yellow = 1, orange = 2 and red = 3 or more. A red dot above a residue indicates a poor fit to the electron density ( $RSRZ > 2$ ). Stretches of 2 or more consecutive residues without any outlier are shown as a green connector. Residues present in the sample, but not in the model, are shown in grey.

- Molecule 1: Cysteine synthase



- Molecule 1: Cysteine synthase



## 4 Data and refinement statistics i

Property	Value	Source
Space group	P 41	Depositor
Cell constants a, b, c, $\alpha$ , $\beta$ , $\gamma$	80.32Å 80.32Å 112.22Å 90.00° 90.00° 90.00°	Depositor
Resolution (Å)	32.66 – 1.86 32.66 – 1.86	Depositor EDS
% Data completeness (in resolution range)	99.8 (32.66-1.86) 96.8 (32.66-1.86)	Depositor EDS
$R_{merge}$	(Not available)	Depositor
$R_{sym}$	0.05	Depositor
$\langle I/\sigma(I) \rangle$ <sup>1</sup>	1.73 (at 1.85Å)	Xtrriage
Refinement program	REFMAC 5.2.0019	Depositor
R, $R_{free}$	0.180 , 0.211 0.178 , (Not available)	Depositor DCC
$R_{free}$ test set	No test flags present.	wwPDB-VP
Wilson B-factor (Å <sup>2</sup> )	23.6	Xtrriage
Anisotropy	0.048	Xtrriage
Bulk solvent $k_{sol}$ (e/Å <sup>3</sup> ), $B_{sol}$ (Å <sup>2</sup> )	0.38 , 48.5	EDS
L-test for twinning <sup>2</sup>	$\langle  L  \rangle = 0.49$ , $\langle L^2 \rangle = 0.33$	Xtrriage
Estimated twinning fraction	0.032 for h,-k,-l	Xtrriage
$F_o, F_c$ correlation	0.96	EDS
Total number of atoms	5513	wwPDB-VP
Average B, all atoms (Å <sup>2</sup> )	25.0	wwPDB-VP

Xtrriage's analysis on translational NCS is as follows: *The largest off-origin peak in the Patterson function is 3.32% of the height of the origin peak. No significant pseudotranslation is detected.*

<sup>1</sup>Intensities estimated from amplitudes.

<sup>2</sup>Theoretical values of  $\langle |L| \rangle$ ,  $\langle L^2 \rangle$  for acentric reflections are 0.5, 0.333 respectively for untwinned datasets, and 0.375, 0.2 for perfectly twinned datasets.

## 5 Model quality [i](#)

### 5.1 Standard geometry [i](#)

Bond lengths and bond angles in the following residue types are not validated in this section: SO4, PLP

The Z score for a bond length (or angle) is the number of standard deviations the observed value is removed from the expected value. A bond length (or angle) with  $|Z| > 5$  is considered an outlier worth inspection. RMSZ is the root-mean-square of all Z scores of the bond lengths (or angles).

Mol	Chain	Bond lengths		Bond angles	
		RMSZ	# Z  >5	RMSZ	# Z  >5
1	A	0.68	0/2616	0.69	2/3527 (0.1%)
1	B	0.70	0/2586	0.64	0/3484
All	All	0.69	0/5202	0.67	2/7011 (0.0%)

There are no bond length outliers.

All (2) bond angle outliers are listed below:

Mol	Chain	Res	Type	Atoms	Z	Observed(°)	Ideal(°)
1	A	37	ARG	NE-CZ-NH2	-8.41	116.10	120.30
1	A	37	ARG	NE-CZ-NH1	7.38	123.99	120.30

There are no chirality outliers.

There are no planarity outliers.

### 5.2 Too-close contacts [i](#)

In the following table, the Non-H and H(model) columns list the number of non-hydrogen atoms and hydrogen atoms in the chain respectively. The H(added) column lists the number of hydrogen atoms added and optimized by MolProbity. The Clashes column lists the number of clashes within the asymmetric unit, whereas Symm-Clashes lists symmetry-related clashes.

Mol	Chain	Non-H	H(model)	H(added)	Clashes	Symm-Clashes
1	A	2573	0	2619	50	0
1	B	2544	0	2613	32	0
2	A	5	0	0	3	0
2	B	5	0	0	0	0
3	A	15	0	7	0	0
3	B	15	0	6	0	0
4	A	171	0	0	5	0

*Continued on next page...*



*Continued from previous page...*

Mol	Chain	Non-H	H(model)	H(added)	Clashes	Symm-Clashes
4	B	185	0	0	1	0
All	All	5513	0	5245	78	0

The all-atom clashscore is defined as the number of clashes found per 1000 atoms (including hydrogen atoms). The all-atom clashscore for this structure is 8.

All (78) close contacts within the same asymmetric unit are listed below, sorted by their clash magnitude.

Atom-1	Atom-2	Interatomic distance (Å)	Clash overlap (Å)
1:B:265:MET:HE2	1:B:286:LEU:CA	1.75	1.17
1:A:258:LYS:HB3	1:A:260:GLN:HE21	0.97	1.08
1:A:258:LYS:HB3	1:A:260:GLN:NE2	1.69	1.06
1:B:265:MET:CE	1:B:286:LEU:HA	1.85	1.05
1:B:265:MET:HE2	1:B:286:LEU:HA	1.06	1.02
1:B:265:MET:CE	1:B:289:LEU:HD12	1.90	1.00
1:A:265:MET:CE	1:A:289:LEU:HD12	1.98	0.94
1:B:267:ARG:NH1	1:B:323:ASP:OD2	2.00	0.94
1:B:265:MET:HE1	1:B:289:LEU:HD12	1.52	0.87
1:A:87:GLY:N	2:A:344:SO4:O3	2.11	0.84
1:A:260:GLN:H	1:A:260:GLN:CD	1.85	0.79
1:A:265:MET:HE3	1:A:289:LEU:CD1	2.14	0.78
1:A:265:MET:HE3	1:A:289:LEU:HD12	1.65	0.76
1:A:265:MET:HE1	1:A:289:LEU:HD12	1.65	0.76
1:A:265:MET:CE	1:A:285:ILE:HG22	2.15	0.76
1:B:201:ALA:O	1:B:205:LYS:HG2	1.87	0.74
1:A:148:LYS:HG3	4:A:494:HOH:O	1.88	0.73
1:B:265:MET:HE3	1:B:289:LEU:HD12	1.69	0.72
1:B:86:SER:CB	1:B:112:MET:HG2	2.19	0.72
1:A:265:MET:HE2	1:A:285:ILE:HG22	1.71	0.71
1:A:265:MET:CE	1:A:286:LEU:HA	2.21	0.70
1:A:87:GLY:HA3	2:A:344:SO4:O3	1.91	0.70
1:A:67:TYR:CE1	1:B:4:ILE:HG22	2.27	0.69
1:A:87:GLY:CA	2:A:344:SO4:O3	2.41	0.69
1:B:86:SER:HB2	1:B:112:MET:HG2	1.75	0.69
1:B:22:GLY:H	1:B:52:ASN:ND2	1.91	0.69
1:A:265:MET:HE1	1:A:286:LEU:HA	1.76	0.65
1:B:265:MET:HE2	1:B:286:LEU:N	2.11	0.65
1:B:22:GLY:H	1:B:52:ASN:HD21	1.44	0.65
1:A:37:ARG:HD2	1:A:293:GLU:OE1	1.96	0.64
1:A:22:GLY:H	1:A:52:ASN:ND2	1.96	0.64
1:A:265:MET:CE	1:A:289:LEU:CD1	2.74	0.63

*Continued on next page...*

*Continued from previous page...*

Atom-1	Atom-2	Interatomic distance (Å)	Clash overlap (Å)
1:A:260:GLN:HG3	4:A:456:HOH:O	1.99	0.62
1:A:258:LYS:HE3	4:A:400:HOH:O	1.98	0.62
1:A:22:GLY:H	1:A:52:ASN:HD21	1.47	0.62
1:A:67:TYR:CZ	1:B:4:ILE:HG22	2.35	0.62
1:A:115:GLU:HA	1:A:118:MET:HE3	1.84	0.60
1:B:265:MET:HE3	1:B:285:ILE:HG22	1.83	0.59
1:B:265:MET:HE3	1:B:289:LEU:CD1	2.33	0.59
1:A:265:MET:HE3	1:A:285:ILE:HG22	1.87	0.57
1:A:115:GLU:HA	1:A:118:MET:CE	2.35	0.57
1:B:326:THR:HG22	1:B:329:GLN:HB2	1.87	0.57
1:A:265:MET:HE2	1:A:286:LEU:N	2.22	0.55
1:B:267:ARG:NH1	1:B:323:ASP:CG	2.61	0.53
1:A:326:THR:HG23	1:A:329:GLN:H	1.75	0.51
1:A:265:MET:HE2	1:A:285:ILE:C	2.30	0.51
1:A:173:ALA:HB2	1:A:200:VAL:HA	1.93	0.51
1:B:4:ILE:O	1:B:4:ILE:HG23	2.10	0.50
1:A:34:GLU:OE1	1:A:327:LYS:NZ	2.44	0.50
1:A:40:LYS:H	1:A:40:LYS:HD2	1.76	0.50
1:B:174:ASN:HB3	4:B:503:HOH:O	2.12	0.49
1:A:267:ARG:NH1	1:A:321:ILE:HD13	2.29	0.47
1:A:91:ILE:HD12	1:A:119:ILE:CG2	2.44	0.47
1:A:63:PHE:HZ	1:B:4:ILE:HG23	1.80	0.47
1:A:88:ASN:ND2	1:A:312:ARG:HH11	2.12	0.46
1:B:317:ASP:HA	1:B:320:LYS:HG2	1.97	0.46
1:B:39:LYS:HZ1	1:B:40:LYS:HE3	1.81	0.45
1:A:37:ARG:NH2	4:A:399:HOH:O	2.46	0.45
1:A:148:LYS:HE3	4:A:494:HOH:O	2.17	0.44
1:A:321:ILE:H	1:A:321:ILE:HD12	1.81	0.44
1:B:4:ILE:O	1:B:4:ILE:CG2	2.66	0.44
1:A:277:CYS:HB2	1:A:281:SER:CB	2.48	0.43
1:A:190:ALA:HB1	1:A:237:ILE:HG21	1.99	0.43
1:A:265:MET:HE2	1:A:286:LEU:CA	2.49	0.42
1:B:317:ASP:HA	1:B:320:LYS:CG	2.50	0.42
1:A:94:CYS:SG	1:A:125:ALA:HB2	2.59	0.42
1:B:117:GLN:HG2	1:B:127:LEU:HD13	2.01	0.42
1:A:91:ILE:HD13	1:A:120:MET:CG	2.50	0.42
1:A:265:MET:HE2	1:A:286:LEU:HA	1.97	0.41
1:A:105:ASN:HB3	1:A:128:ILE:HD11	2.03	0.41
1:A:267:ARG:HH12	1:A:321:ILE:HD13	1.84	0.41
1:B:39:LYS:NZ	1:B:40:LYS:HG3	2.36	0.41
1:B:190:ALA:HB1	1:B:237:ILE:HG21	2.02	0.41

*Continued on next page...*

*Continued from previous page...*

Atom-1	Atom-2	Interatomic distance (Å)	Clash overlap (Å)
1:B:264:LYS:HG3	1:B:267:ARG:HH12	1.84	0.41
1:B:88:ASN:ND2	1:B:312:ARG:HH11	2.19	0.40
1:A:30:HIS:O	1:A:34:GLU:HG3	2.22	0.40
1:A:67:TYR:CE1	1:B:4:ILE:CG2	3.01	0.40
1:A:186:ILE:HD12	1:A:302:ILE:HG12	2.04	0.40

There are no symmetry-related clashes.

### 5.3 Torsion angles [i](#)

#### 5.3.1 Protein backbone [i](#)

In the following table, the Percentiles column shows the percent Ramachandran outliers of the chain as a percentile score with respect to all X-ray entries followed by that with respect to entries of similar resolution.

The Analysed column shows the number of residues for which the backbone conformation was analysed, and the total number of residues.

Mol	Chain	Analysed	Favoured	Allowed	Outliers	Percentiles	
1	A	336/343 (98%)	329 (98%)	7 (2%)	0	100	100
1	B	332/343 (97%)	324 (98%)	7 (2%)	1 (0%)	41	26
All	All	668/686 (97%)	653 (98%)	14 (2%)	1 (0%)	51	36

All (1) Ramachandran outliers are listed below:

Mol	Chain	Res	Type
1	B	113	SER

#### 5.3.2 Protein sidechains [i](#)

In the following table, the Percentiles column shows the percent sidechain outliers of the chain as a percentile score with respect to all X-ray entries followed by that with respect to entries of similar resolution.

The Analysed column shows the number of residues for which the sidechain conformation was analysed, and the total number of residues.

*Continued on next page...*

*Continued from previous page...*

Mol	Chain	Analysed	Rotameric	Outliers	Percentiles	
1	A	275/283 (97%)	268 (98%)	7 (2%)	47	31
1	B	273/283 (96%)	268 (98%)	5 (2%)	59	45
All	All	548/566 (97%)	536 (98%)	12 (2%)	52	36

All (12) residues with a non-rotameric sidechain are listed below:

Mol	Chain	Res	Type
1	A	40	LYS
1	A	42	THR
1	A	76	LYS
1	A	260	GLN
1	A	321	ILE
1	A	336	ASN
1	A	338	HIS
1	B	5	SER
1	B	112	MET
1	B	265	MET
1	B	271	LYS
1	B	321	ILE

Sometimes sidechains can be flipped to improve hydrogen bonding and reduce clashes. All (10) such sidechains are listed below:

Mol	Chain	Res	Type
1	A	52	ASN
1	A	88	ASN
1	A	144	ASN
1	A	260	GLN
1	A	336	ASN
1	A	338	HIS
1	B	52	ASN
1	B	68	GLN
1	B	88	ASN
1	B	95	GLN

### 5.3.3 RNA ⓘ

There are no RNA molecules in this entry.

## 5.4 Non-standard residues in protein, DNA, RNA chains [i](#)

There are no non-standard protein/DNA/RNA residues in this entry.

## 5.5 Carbohydrates [i](#)

There are no monosaccharides in this entry.

## 5.6 Ligand geometry [i](#)

4 ligands are modelled in this entry.

In the following table, the Counts columns list the number of bonds (or angles) for which Mogul statistics could be retrieved, the number of bonds (or angles) that are observed in the model and the number of bonds (or angles) that are defined in the Chemical Component Dictionary. The Link column lists molecule types, if any, to which the group is linked. The Z score for a bond length (or angle) is the number of standard deviations the observed value is removed from the expected value. A bond length (or angle) with  $|Z| > 2$  is considered an outlier worth inspection. RMSZ is the root-mean-square of all Z scores of the bond lengths (or angles).

Mol	Type	Chain	Res	Link	Bond lengths			Bond angles		
					Counts	RMSZ	# Z  > 2	Counts	RMSZ	# Z  > 2
2	SO4	B	344	-	4,4,4	0.16	0	6,6,6	0.31	0
2	SO4	A	344	-	4,4,4	0.22	0	6,6,6	0.14	0
3	PLP	A	345	1	15,15,16	1.03	1 (6%)	20,22,23	1.50	5 (25%)
3	PLP	B	345	1	15,15,16	1.21	2 (13%)	20,22,23	1.18	1 (5%)

In the following table, the Chirals column lists the number of chiral outliers, the number of chiral centers analysed, the number of these observed in the model and the number defined in the Chemical Component Dictionary. Similar counts are reported in the Torsion and Rings columns. '-' means no outliers of that kind were identified.

Mol	Type	Chain	Res	Link	Chirals	Torsions	Rings
3	PLP	A	345	1	-	0/6/6/8	0/1/1/1
3	PLP	B	345	1	-	0/6/6/8	0/1/1/1

All (3) bond length outliers are listed below:

Mol	Chain	Res	Type	Atoms	Z	Observed(Å)	Ideal(Å)
3	B	345	PLP	C6-N1	2.86	1.40	1.34
3	B	345	PLP	C2-N1	2.35	1.38	1.33
3	A	345	PLP	C2-N1	2.34	1.38	1.33

All (6) bond angle outliers are listed below:

Mol	Chain	Res	Type	Atoms	Z	Observed(°)	Ideal(°)
3	A	345	PLP	C3-C4-C5	3.03	122.02	118.74
3	A	345	PLP	C6-N1-C2	2.57	123.93	119.17
3	B	345	PLP	C5-C6-N1	-2.46	119.72	123.82
3	A	345	PLP	C4A-C4-C5	-2.33	118.54	120.94
3	A	345	PLP	C3-C2-N1	-2.32	117.77	120.77
3	A	345	PLP	C5-C6-N1	-2.24	120.09	123.82

There are no chirality outliers.

There are no torsion outliers.

There are no ring outliers.

1 monomer is involved in 3 short contacts:

Mol	Chain	Res	Type	Clashes	Symm-Clashes
2	A	344	SO4	3	0

## 5.7 Other polymers [i](#)

There are no such residues in this entry.

## 5.8 Polymer linkage issues [i](#)

There are no chain breaks in this entry.

## 6 Fit of model and data

### 6.1 Protein, DNA and RNA chains

In the following table, the column labelled ‘#RSRZ > 2’ contains the number (and percentage) of RSRZ outliers, followed by percent RSRZ outliers for the chain as percentile scores relative to all X-ray entries and entries of similar resolution. The OWAB column contains the minimum, median, 95<sup>th</sup> percentile and maximum values of the occupancy-weighted average B-factor per residue. The column labelled ‘Q < 0.9’ lists the number of (and percentage) of residues with an average occupancy less than 0.9.

Mol	Chain	Analysed	<RSRZ>	#RSRZ>2	OWAB(Å <sup>2</sup> )	Q<0.9
1	A	338/343 (98%)	0.09	12 (3%) 42 40	14, 22, 37, 51	0
1	B	334/343 (97%)	0.18	20 (5%) 21 21	13, 22, 45, 52	0
All	All	672/686 (97%)	0.14	32 (4%) 30 29	13, 22, 42, 52	0

All (32) RSRZ outliers are listed below:

Mol	Chain	Res	Type	RSRZ
1	B	321	ILE	5.2
1	B	40	LYS	5.0
1	A	2	GLU	4.6
1	B	133	LYS	4.0
1	A	40	LYS	3.9
1	B	336	ASN	3.7
1	B	113	SER	3.5
1	B	320	LYS	3.4
1	A	118	MET	3.3
1	B	315	SER	3.2
1	B	112	MET	3.1
1	B	148	LYS	3.1
1	A	114	VAL	3.1
1	B	131	GLU	3.0
1	B	134	LYS	2.9
1	B	114	VAL	2.8
1	B	322	LYS	2.7
1	B	110	SER	2.5
1	A	322	LYS	2.5
1	B	151	PRO	2.4
1	B	145	LYS	2.4
1	A	57	VAL	2.4
1	A	309	CYS	2.3
1	A	324	GLU	2.3

*Continued on next page...*

*Continued from previous page...*

Mol	Chain	Res	Type	RSRZ
1	B	324	GLU	2.2
1	B	317	ASP	2.1
1	A	228	ALA	2.1
1	A	113	SER	2.1
1	A	226	GLY	2.1
1	B	135	GLY	2.0
1	B	116	ARG	2.0
1	A	112	MET	2.0

## 6.2 Non-standard residues in protein, DNA, RNA chains [i](#)

There are no non-standard protein/DNA/RNA residues in this entry.

## 6.3 Carbohydrates [i](#)

There are no monosaccharides in this entry.

## 6.4 Ligands [i](#)

In the following table, the Atoms column lists the number of modelled atoms in the group and the number defined in the chemical component dictionary. The B-factors column lists the minimum, median, 95<sup>th</sup> percentile and maximum values of B factors of atoms in the group. The column labelled 'Q< 0.9' lists the number of atoms with occupancy less than 0.9.

Mol	Type	Chain	Res	Atoms	RSCC	RSR	B-factors(Å <sup>2</sup> )	Q<0.9
2	SO4	A	344	5/5	0.90	0.20	54,55,56,58	0
2	SO4	B	344	5/5	0.96	0.09	50,50,51,52	0
3	PLP	A	345	15/16	0.99	0.12	14,16,17,18	0
3	PLP	B	345	15/16	0.99	0.12	12,15,17,17	0

## 6.5 Other polymers [i](#)

There are no such residues in this entry.