



Full wwPDB X-ray Structure Validation Report ⓘ

Oct 3, 2023 – 09:37 AM EDT

PDB ID : 6POZ
Title : Structure of human endothelial nitric oxide synthase heme domain in complex with 7-(3-(Aminomethyl)-4-isopropoxyphenyl)-4-methylquinolin-2-amine
Authors : Chreifi, G.; Li, H.; Poulos, T.L.
Deposited on : 2019-07-05
Resolution : 2.20 Å(reported)

This is a Full wwPDB X-ray Structure Validation Report for a publicly released PDB entry.

We welcome your comments at validation@mail.wwpdb.org

A user guide is available at

<https://www.wwpdb.org/validation/2017/XrayValidationReportHelp>

with specific help available everywhere you see the ⓘ symbol.

The types of validation reports are described at

<http://www.wwpdb.org/validation/2017/FAQs#types>.

The following versions of software and data (see [references ⓘ](#)) were used in the production of this report:

MolProbity : 4.02b-467
Mogul : 1.8.5 (274361), CSD as541be (2020)
Xtrriage (Phenix) : 1.13
EDS : 2.35.1
buster-report : 1.1.7 (2018)
Percentile statistics : 20191225.v01 (using entries in the PDB archive December 25th 2019)
Refmac : 5.8.0158
CCP4 : 7.0.044 (Gargrove)
Ideal geometry (proteins) : Engh & Huber (2001)
Ideal geometry (DNA, RNA) : Parkinson et al. (1996)
Validation Pipeline (wwPDB-VP) : 2.35.1

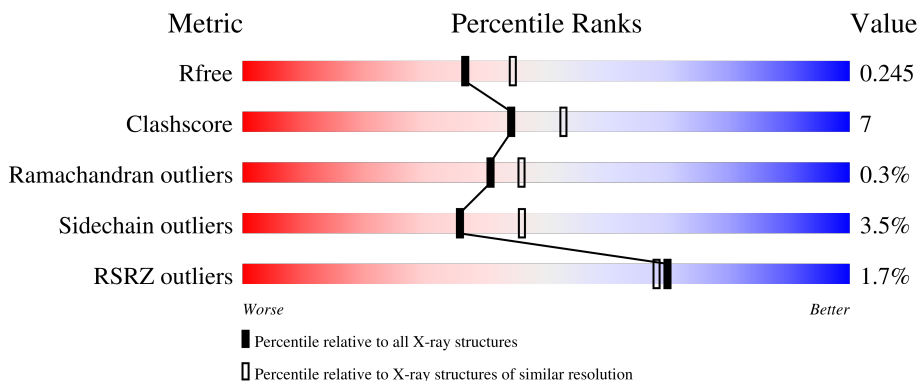
1 Overall quality at a glance

The following experimental techniques were used to determine the structure:

X-RAY DIFFRACTION

The reported resolution of this entry is 2.20 Å.

Percentile scores (ranging between 0-100) for global validation metrics of the entry are shown in the following graphic. The table shows the number of entries on which the scores are based.



Metric	Whole archive (#Entries)	Similar resolution (#Entries, resolution range(Å))
R_{free}	130704	4898 (2.20-2.20)
Clashscore	141614	5594 (2.20-2.20)
Ramachandran outliers	138981	5503 (2.20-2.20)
Sidechain outliers	138945	5504 (2.20-2.20)
RSRZ outliers	127900	4800 (2.20-2.20)

The table below summarises the geometric issues observed across the polymeric chains and their fit to the electron density. The red, orange, yellow and green segments of the lower bar indicate the fraction of residues that contain outliers for ≥ 3 , 2, 1 and 0 types of geometric quality criteria respectively. A grey segment represents the fraction of residues that are not modelled. The numeric value for each fraction is indicated below the corresponding segment, with a dot representing fractions $\leq 5\%$. The upper red bar (where present) indicates the fraction of residues that have poor fit to the electron density. The numeric value is given above the bar.

Mol	Chain	Length	Quality of chain
1	A	440	 4% 77% 13% • 9%
1	B	440	 78% 13% • 9%
1	C	440	 % 75% 15% • 9%
1	D	440	 % 78% 13% • 8%

2 Entry composition

There are 10 unique types of molecules in this entry. The entry contains 13659 atoms, of which 0 are hydrogens and 0 are deuteriums.

In the tables below, the ZeroOcc column contains the number of atoms modelled with zero occupancy, the AltConf column contains the number of residues with at least one atom in alternate conformation and the Trace column contains the number of residues modelled with at most 2 atoms.

- Molecule 1 is a protein called Nitric oxide synthase, endothelial.

Mol	Chain	Residues	Atoms					ZeroOcc	AltConf	Trace
			Total	C	N	O	S			
1	A	401	3209	2044	563	586	16	0	2	0
1	B	402	3221	2051	566	587	17	0	3	0
1	C	401	3209	2044	563	586	16	0	2	0
1	D	404	3241	2063	572	589	17	0	3	0

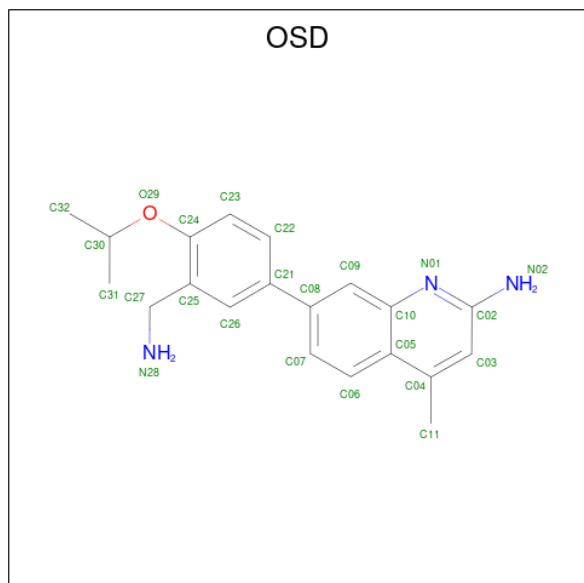
There are 4 discrepancies between the modelled and reference sequences:

Chain	Residue	Modelled	Actual	Comment	Reference
A	298	GLU	ASP	variant	UNP P29474
B	298	GLU	ASP	variant	UNP P29474
C	298	GLU	ASP	variant	UNP P29474
D	298	GLU	ASP	variant	UNP P29474

- Molecule 2 is PROTOPORPHYRIN IX CONTAINING FE (three-letter code: HEM) (formula: $C_{34}H_{32}FeN_4O_4$).

Mol	Chain	Residues	Atoms				ZeroOcc	AltConf
			Total	C	N	O		
3	A	1	17	9	5	3	0	0
3	C	1	17	9	5	3	0	0

- Molecule 4 is 7-{3-(aminomethyl)-4-[(propan-2-yl)oxy]phenyl}-4-methylquinolin-2-amine (three-letter code: OSD) (formula: C₂₀H₂₃N₃O) (labeled as "Ligand of Interest" by depositor).



Mol	Chain	Residues	Atoms				ZeroOcc	AltConf
			Total	C	N	O		
4	A	1	24	20	3	1	0	0
4	A	1	24	20	3	1	0	0
4	B	1	24	20	3	1	0	0
4	C	1	24	20	3	1	0	0
4	C	1	24	20	3	1	0	0
4	D	1	24	20	3	1	0	0

- Molecule 5 is 2-[BIS-(2-HYDROXY-ETHYL)-AMINO]-2-HYDROXYMETHYL-PROPAN E-1,3-DIOL (three-letter code: BTB) (formula: C₈H₁₉NO₅).



Mol	Chain	Residues	Atoms				ZeroOcc	AltConf
5	A	1	Total	C	N	O	0	0
			14	8	1	5		
5	A	1	Total	C	N	O	0	0
			14	8	1	5		
5	B	1	Total	C	N	O	0	0
			14	8	1	5		
5	B	1	Total	C	N	O	0	0
			14	8	1	5		
5	B	1	Total	C	N	O	0	0
			14	8	1	5		
5	B	1	Total	C	N	O	0	0
			14	8	1	5		
5	C	1	Total	C	N	O	0	0
			14	8	1	5		
5	D	1	Total	C	N	O	0	0
			14	8	1	5		
5	D	1	Total	C	N	O	0	0
			14	8	1	5		

- Molecule 6 is ZINC ION (three-letter code: ZN) (formula: Zn).

Mol	Chain	Residues	Atoms		ZeroOcc	AltConf
6	A	1	Total	Zn	0	0
			1	1		
6	C	1	Total	Zn	0	0
			1	1		

- Molecule 7 is GLYCEROL (three-letter code: GOL) (formula: C₃H₈O₃).



Mol	Chain	Residues	Atoms	ZeroOcc	AltConf
7	A	1	Total C O 6 3 3	0	0
7	C	1	Total C O 6 3 3	0	0

- Molecule 8 is CHLORIDE ION (three-letter code: CL) (formula: Cl).

Mol	Chain	Residues	Atoms	ZeroOcc	AltConf
8	A	1	Total Cl 1 1	0	0
8	B	1	Total Cl 1 1	0	0
8	C	1	Total Cl 1 1	0	0
8	D	1	Total Cl 1 1	0	0

- Molecule 9 is GADOLINIUM ATOM (three-letter code: GD) (formula: Gd).

Mol	Chain	Residues	Atoms	ZeroOcc	AltConf
9	A	1	Total Gd 1 1	0	0
9	B	1	Total Gd 1 1	0	0
9	C	1	Total Gd 1 1	0	0

Continued on next page...

Continued from previous page...

Mol	Chain	Residues	Atoms		ZeroOcc	AltConf
9	D	1	Total 1	Gd 1	0	0

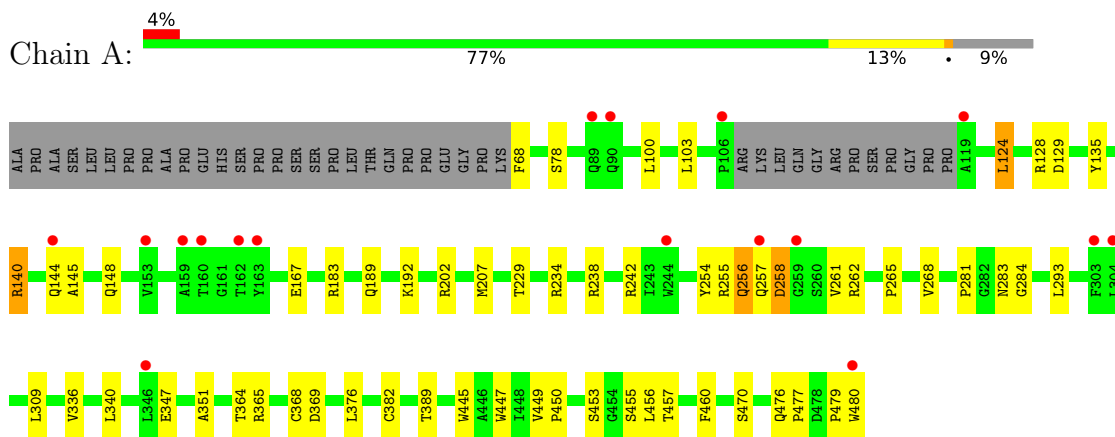
- Molecule 10 is water.

Mol	Chain	Residues	Atoms		ZeroOcc	AltConf
10	A	54	Total 54	O 54	0	0
10	B	85	Total 85	O 85	0	0
10	C	66	Total 66	O 66	0	0
10	D	76	Total 76	O 76	0	0

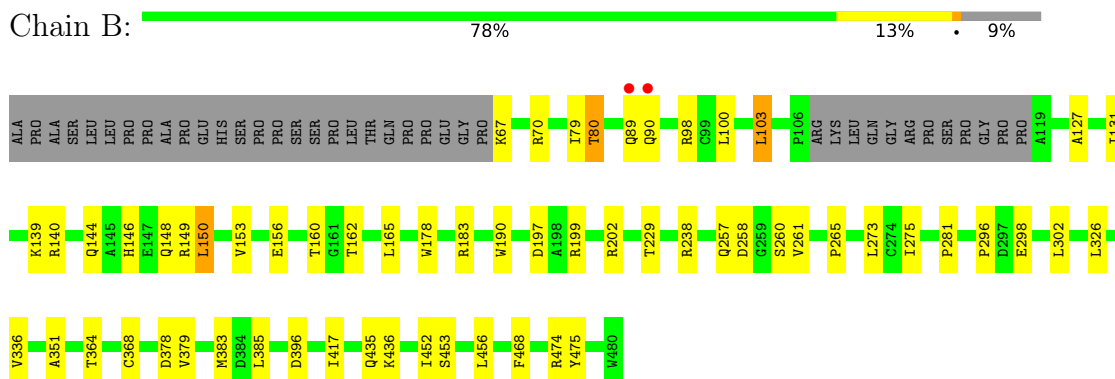
3 Residue-property plots [i](#)

These plots are drawn for all protein, RNA, DNA and oligosaccharide chains in the entry. The first graphic for a chain summarises the proportions of the various outlier classes displayed in the second graphic. The second graphic shows the sequence view annotated by issues in geometry and electron density. Residues are color-coded according to the number of geometric quality criteria for which they contain at least one outlier: green = 0, yellow = 1, orange = 2 and red = 3 or more. A red dot above a residue indicates a poor fit to the electron density ($RSRZ > 2$). Stretches of 2 or more consecutive residues without any outlier are shown as a green connector. Residues present in the sample, but not in the model, are shown in grey.

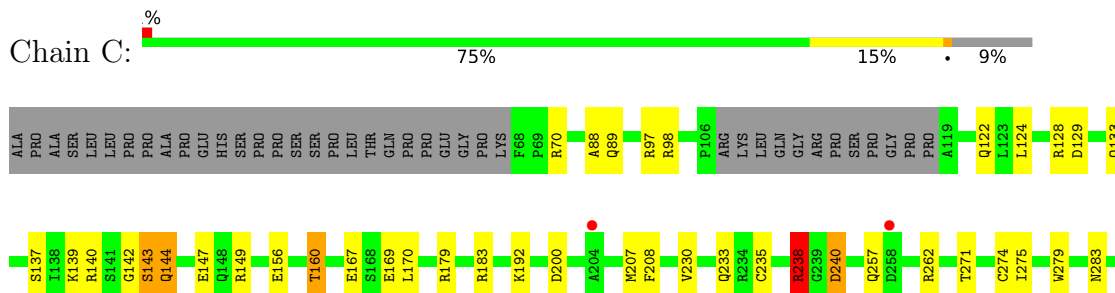
- Molecule 1: Nitric oxide synthase, endothelial



- Molecule 1: Nitric oxide synthase, endothelial

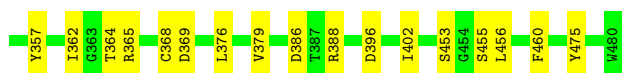
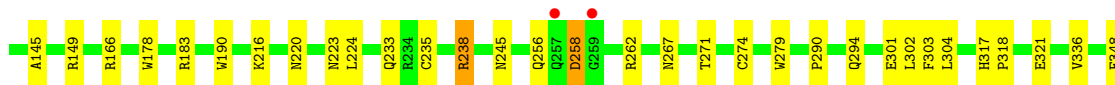
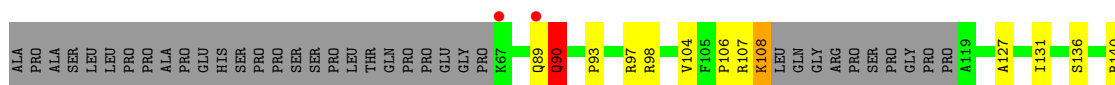
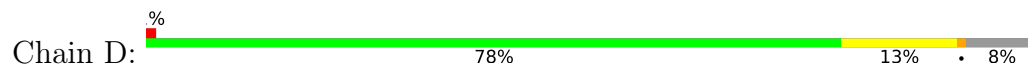


- Molecule 1: Nitric oxide synthase, endothelial





- Molecule 1: Nitric oxide synthase, endothelial



4 Data and refinement statistics i

Property	Value	Source
Space group	P 1 21 1	Depositor
Cell constants a, b, c, α , β , γ	59.11Å 153.26Å 109.19Å 90.00° 90.84° 90.00°	Depositor
Resolution (Å)	48.95 – 2.20 88.92 – 2.20	Depositor EDS
% Data completeness (in resolution range)	93.5 (48.95-2.20) 94.1 (88.92-2.20)	Depositor EDS
R_{merge}	0.20	Depositor
R_{sym}	0.20	Depositor
$\langle I/\sigma(I) \rangle$ ¹	1.48 (at 2.20Å)	Xtrriage
Refinement program	PHENIX (1.11.1-2575_1496: ???)	Depositor
R, R_{free}	0.191 , 0.251 0.185 , 0.245	Depositor DCC
R_{free} test set	4634 reflections (5.01%)	wwPDB-VP
Wilson B-factor (Å ²)	38.6	Xtrriage
Anisotropy	0.951	Xtrriage
Bulk solvent k_{sol} (e/Å ³), B_{sol} (Å ²)	0.34 , 48.9	EDS
L-test for twinning ²	$\langle L \rangle = 0.48$, $\langle L^2 \rangle = 0.31$	Xtrriage
Estimated twinning fraction	0.118 for h,-k,-l	Xtrriage
F_o, F_c correlation	0.96	EDS
Total number of atoms	13659	wwPDB-VP
Average B, all atoms (Å ²)	63.0	wwPDB-VP

Xtrriage's analysis on translational NCS is as follows: *The largest off-origin peak in the Patterson function is 3.64% of the height of the origin peak. No significant pseudotranslation is detected.*

¹Intensities estimated from amplitudes.

²Theoretical values of $\langle |L| \rangle$, $\langle L^2 \rangle$ for acentric reflections are 0.5, 0.333 respectively for untwinned datasets, and 0.375, 0.2 for perfectly twinned datasets.

5 Model quality [i](#)

5.1 Standard geometry [i](#)

Bond lengths and bond angles in the following residue types are not validated in this section: OSD, ZN, H4B, CL, HEM, BTB, GOL, GD

The Z score for a bond length (or angle) is the number of standard deviations the observed value is removed from the expected value. A bond length (or angle) with $|Z| > 5$ is considered an outlier worth inspection. RMSZ is the root-mean-square of all Z scores of the bond lengths (or angles).

Mol	Chain	Bond lengths		Bond angles	
		RMSZ	# Z >5	RMSZ	# Z >5
1	A	0.41	0/3307	0.56	1/4507 (0.0%)
1	B	0.44	0/3319	0.57	0/4523
1	C	0.41	0/3307	0.54	0/4507
1	D	0.46	0/3339	0.59	0/4548
All	All	0.43	0/13272	0.56	1/18085 (0.0%)

Chiral center outliers are detected by calculating the chiral volume of a chiral center and verifying if the center is modelled as a planar moiety or with the opposite hand. A planarity outlier is detected by checking planarity of atoms in a peptide group, atoms in a mainchain group or atoms of a sidechain that are expected to be planar.

Mol	Chain	#Chirality outliers	#Planarity outliers
1	C	0	2

There are no bond length outliers.

All (1) bond angle outliers are listed below:

Mol	Chain	Res	Type	Atoms	Z	Observed($^{\circ}$)	Ideal($^{\circ}$)
1	A	369	ASP	CB-CG-OD1	5.04	122.83	118.30

There are no chirality outliers.

All (2) planarity outliers are listed below:

Mol	Chain	Res	Type	Group
1	C	143	SER	Peptide
1	C	144	GLN	Peptide

5.2 Too-close contacts

In the following table, the Non-H and H(model) columns list the number of non-hydrogen atoms and hydrogen atoms in the chain respectively. The H(added) column lists the number of hydrogen atoms added and optimized by MolProbity. The Clashes column lists the number of clashes within the asymmetric unit, whereas Symm-Clashes lists symmetry-related clashes.

Mol	Chain	Non-H	H(model)	H(added)	Clashes	Symm-Clashes
1	A	3209	0	3109	37	0
1	B	3221	0	3126	35	0
1	C	3209	0	3109	41	0
1	D	3241	0	3152	37	0
2	A	43	0	30	4	0
2	B	43	0	30	4	0
2	C	43	0	30	5	0
2	D	43	0	30	4	0
3	A	17	0	15	1	0
3	C	17	0	15	2	0
4	A	48	0	0	2	0
4	B	24	0	0	1	0
4	C	48	0	0	4	0
4	D	24	0	0	2	0
5	A	28	0	37	6	0
5	B	56	0	74	8	0
5	C	14	0	19	1	0
5	D	28	0	36	4	0
6	A	1	0	0	0	0
6	C	1	0	0	0	0
7	A	6	0	8	1	0
7	C	6	0	8	1	0
8	A	1	0	0	0	0
8	B	1	0	0	0	0
8	C	1	0	0	0	0
8	D	1	0	0	0	0
9	A	1	0	0	0	0
9	B	1	0	0	0	0
9	C	1	0	0	0	0
9	D	1	0	0	0	0
10	A	54	0	0	2	1
10	B	85	0	0	0	0
10	C	66	0	0	3	0
10	D	76	0	0	3	1
All	All	13659	0	12828	172	1

The all-atom clashscore is defined as the number of clashes found per 1000 atoms (including

hydrogen atoms). The all-atom clashscore for this structure is 7.

All (172) close contacts within the same asymmetric unit are listed below, sorted by their clash magnitude.

Atom-1	Atom-2	Interatomic distance (Å)	Clash overlap (Å)
1:C:257:GLN:NE2	10:C:601:HOH:O	1.90	1.00
1:C:183:ARG:HB2	2:C:501:HEM:HBD2	1.60	0.84
1:D:279:TRP:HB2	1:D:302:LEU:HD21	1.65	0.77
1:C:207:MET:HG2	1:C:293:LEU:HD13	1.65	0.76
1:B:197:ASP:OD1	1:B:199:ARG:HD3	1.86	0.76
1:B:326:LEU:HD23	5:B:507:BTB:H52	1.71	0.73
1:A:258:ASP:N	1:A:258:ASP:OD1	2.18	0.71
1:C:238:ARG:NH2	10:C:602:HOH:O	2.22	0.70
1:D:290:PRO:HB3	1:D:304:LEU:HD23	1.74	0.70
1:D:93:PRO:HG3	1:D:106:PRO:HB3	1.75	0.68
1:A:144:GLN:HG2	1:A:145:ALA:H	1.60	0.65
5:A:505:BTB:O3	5:A:505:BTB:O1	2.12	0.65
2:A:501:HEM:HMC2	2:A:501:HEM:HBC2	1.80	0.64
1:C:240:ASP:OD1	1:C:349:PRO:HG2	1.97	0.64
1:D:89:GLN:O	1:D:90:GLN:HB2	1.99	0.63
1:A:183:ARG:HD3	1:A:447:TRP:CD2	2.32	0.63
1:A:242:ARG:NH2	1:A:477:PRO:O	2.32	0.62
1:A:167:GLU:OE1	7:A:507:GOL:O3	2.16	0.62
1:A:257:GLN:NE2	10:A:604:HOH:O	2.32	0.62
4:A:503:OSD:N28	4:A:503:OSD:O29	2.33	0.61
1:D:475:TYR:OH	2:D:501:HEM:O2D	2.16	0.61
1:A:242:ARG:HE	1:A:479:PRO:HD3	1.66	0.60
2:D:501:HEM:HBB2	2:D:501:HEM:HHC	1.83	0.60
2:C:501:HEM:HBB2	2:C:501:HEM:HHC	1.83	0.59
1:D:301:GLU:HB3	1:D:303:PHE:HE1	1.66	0.59
1:A:145:ALA:HA	1:A:148:GLN:HB2	1.84	0.59
1:A:183:ARG:HD2	2:A:501:HEM:O1D	2.03	0.58
1:D:267:ASN:O	1:D:271:THR:OG1	2.14	0.58
1:B:298:GLU:OE2	5:B:504:BTB:H61	2.04	0.58
2:A:501:HEM:HBB2	2:A:501:HEM:HHC	1.85	0.58
1:D:127:ALA:O	1:D:131:ILE:HG12	2.03	0.58
5:D:504:BTB:H81	5:D:504:BTB:O6	2.03	0.58
1:D:321:GLU:OE1	5:D:503:BTB:O4	2.22	0.57
1:D:453:SER:HB3	1:D:456:LEU:HD12	1.85	0.57
1:D:386:ASP:OD1	1:D:388:ARG:HG2	2.04	0.57
1:C:88:ALA:O	1:D:97:ARG:NH2	2.38	0.57
1:C:147:GLU:N	1:C:147:GLU:OE1	2.39	0.55
2:C:501:HEM:O2A	4:C:503:OSD:N28	2.38	0.55

Continued on next page...

Continued from previous page...

Atom-1	Atom-2	Interatomic distance (Å)	Clash overlap (Å)
1:C:279:TRP:HB2	1:C:302:LEU:HD11	1.89	0.55
1:C:450:PRO:HG2	1:C:457:THR:HG21	1.89	0.55
1:B:257:GLN:H	1:B:257:GLN:CD	2.10	0.55
1:B:378:ASP:HB3	5:B:507:BTB:H82	1.88	0.55
1:C:149:ARG:NE	1:C:169:GLU:OE2	2.33	0.54
1:B:183:ARG:HB2	2:B:501:HEM:HBD2	1.90	0.54
1:A:183:ARG:HB2	2:A:501:HEM:CGD	2.37	0.54
1:B:149:ARG:O	1:B:153:VAL:HG12	2.07	0.54
1:B:197:ASP:OD2	1:B:199:ARG:NH1	2.40	0.54
1:B:336:VAL:HG21	4:B:502:OSD:C07	2.38	0.53
1:A:450:PRO:HG2	1:A:457:THR:HG21	1.91	0.53
1:D:178:TRP:CE3	1:D:190:TRP:HA	2.45	0.52
1:A:340:LEU:HB2	1:A:476:GLN:NE2	2.25	0.52
1:D:106:PRO:O	10:D:601:HOH:O	2.19	0.52
1:C:262:ARG:NH1	1:C:283:ASN:O	2.43	0.52
1:C:336:VAL:HG21	4:C:503:OSD:C07	2.39	0.52
1:A:365:ARG:HH12	3:A:502:H4B:C4	2.22	0.51
1:B:90:GLN:HG3	1:B:468:PHE:CD1	2.44	0.51
1:A:364:THR:O	1:A:368:CYS:HB2	2.10	0.51
1:D:336:VAL:HG21	4:D:502:OSD:C07	2.40	0.51
1:D:368:CYS:SG	1:D:376:LEU:HD13	2.50	0.51
1:C:144:GLN:HA	1:C:147:GLU:OE1	2.11	0.51
2:C:501:HEM:CGA	3:C:502:H4B:HN22	2.24	0.51
1:C:179:ARG:NH2	1:C:438:ARG:HG3	2.25	0.50
1:A:207:MET:HE3	1:A:293:LEU:HB3	1.92	0.50
1:C:271:THR:O	1:C:275:ILE:HG12	2.11	0.50
1:C:290:PRO:HB3	1:C:304:LEU:HD23	1.94	0.50
2:C:501:HEM:HBC2	2:C:501:HEM:HMC2	1.94	0.50
5:D:504:BTB:H81	5:D:504:BTB:C6	2.42	0.50
1:A:124:LEU:HD21	1:A:128:ARG:NH2	2.27	0.50
1:D:475:TYR:OH	2:D:501:HEM:CGD	2.60	0.50
1:B:146:HIS:O	1:B:150:LEU:HD12	2.12	0.49
1:B:156:GLU:O	1:B:160:THR:HG22	2.12	0.49
1:B:100:LEU:HB3	1:B:103:LEU:HD22	1.93	0.49
1:D:455:SER:HA	1:D:460:PHE:CG	2.48	0.49
1:D:364:THR:O	1:D:368:CYS:HB2	2.12	0.49
1:C:200:ASP:OD1	1:C:200:ASP:N	2.44	0.49
1:A:479:PRO:HD2	1:A:480:TRP:CZ3	2.48	0.49
1:A:453:SER:HA	1:B:452:ILE:HG22	1.95	0.49
1:C:455:SER:HA	1:C:460:PHE:CG	2.47	0.49
1:C:292:LEU:HD21	1:C:302:LEU:HD12	1.95	0.48

Continued on next page...

Continued from previous page...

Atom-1	Atom-2	Interatomic distance (Å)	Clash overlap (Å)
1:A:382:CYS:HA	5:A:504:BTB:H11	1.94	0.48
1:C:274:CYS:SG	1:C:290:PRO:HG2	2.54	0.48
1:A:242:ARG:NE	1:A:479:PRO:HD3	2.27	0.48
5:B:504:BTB:H52	5:B:504:BTB:H81	1.41	0.48
1:B:89:GLN:O	1:B:90:GLN:HG2	2.14	0.48
1:D:290:PRO:HG2	1:D:302:LEU:HD11	1.95	0.48
1:A:68:PHE:N	10:A:607:HOH:O	2.45	0.48
1:B:275:ILE:HD11	1:B:281:PRO:HB3	1.95	0.48
1:B:475:TYR:OH	2:B:501:HEM:O1D	2.17	0.48
1:D:256:GLN:HB3	10:D:672:HOH:O	2.13	0.48
1:A:144:GLN:CG	1:A:145:ALA:H	2.27	0.47
1:C:365:ARG:HH12	3:C:502:H4B:C4	2.27	0.47
5:A:504:BTB:H71	5:A:504:BTB:H12	1.68	0.47
1:B:238:ARG:HG2	1:B:296:PRO:HB3	1.96	0.47
1:C:70:ARG:NH2	10:C:608:HOH:O	2.43	0.47
5:C:504:BTB:H41	5:C:504:BTB:H51	1.51	0.46
1:D:301:GLU:HB3	1:D:303:PHE:CE1	2.46	0.46
1:B:178:TRP:CE3	1:B:190:TRP:HA	2.51	0.46
2:D:501:HEM:HBD1	4:D:502:OSD:C22	2.45	0.46
1:A:135:TYR:HB3	1:A:140:ARG:O	2.16	0.46
1:A:368:CYS:SG	1:A:376:LEU:HD13	2.55	0.46
1:B:383:MET:HB2	1:B:385:LEU:HG	1.97	0.46
1:B:80:THR:HG21	1:B:435:GLN:HG2	1.97	0.46
1:A:100:LEU:HB3	1:A:103:LEU:HD22	1.98	0.45
1:B:127:ALA:O	1:B:131:ILE:HG12	2.16	0.45
1:B:453:SER:HB3	1:B:456:LEU:HD12	1.96	0.45
1:C:364:THR:O	1:C:368:CYS:HB2	2.15	0.45
1:A:262:ARG:HD3	1:A:284:GLY:HA2	1.97	0.45
1:A:455:SER:HA	1:A:460:PHE:CG	2.51	0.45
1:C:317:HIS:CG	1:C:318:PRO:HD2	2.51	0.45
1:A:234:ARG:NH1	1:A:347:GLU:OE1	2.50	0.45
1:D:357:TYR:CD2	1:D:362:ILE:HD11	2.51	0.45
1:A:124:LEU:HD21	1:A:128:ARG:CZ	2.47	0.45
5:B:508:BTB:O4	5:B:508:BTB:O1	2.26	0.45
1:D:235[B]:CYS:SG	1:D:238:ARG:HB3	2.56	0.44
5:A:505:BTB:H41	5:A:505:BTB:H72	1.77	0.44
1:D:233:GLN:HB3	1:D:348:PHE:CE2	2.52	0.44
2:B:501:HEM:HBA1	2:B:501:HEM:HMA2	2.00	0.44
1:C:129:ASP:O	1:C:133:GLN:HG3	2.17	0.44
1:D:365:ARG:NH2	1:D:369:ASP:OD2	2.48	0.44
1:B:258:ASP:HB2	1:B:260:SER:OG	2.17	0.44

Continued on next page...

Continued from previous page...

Atom-1	Atom-2	Interatomic distance (Å)	Clash overlap (Å)
1:B:261:VAL:HG11	1:B:265:PRO:HA	2.00	0.44
1:C:167:GLU:OE1	7:C:506:GOL:O3	2.27	0.44
1:C:291:LEU:HB3	1:C:293:LEU:HD21	2.00	0.44
1:B:229:THR:O	1:B:351:ALA:HA	2.18	0.43
1:B:379:VAL:O	1:B:383:MET:HG3	2.18	0.43
1:B:160:THR:HG23	1:B:162:THR:H	1.82	0.43
1:C:361:GLU:OE2	4:C:503:OSD:N02	2.51	0.43
1:C:89:GLN:O	1:D:97:ARG:NH2	2.51	0.43
1:B:364:THR:O	1:B:368:CYS:HB2	2.18	0.43
1:C:445:TRP:CZ2	1:C:449:VAL:HG21	2.52	0.43
1:D:317:HIS:CG	1:D:318:PRO:HD2	2.54	0.43
5:A:504:BTB:H32	5:A:504:BTB:H51	1.73	0.43
1:C:376:LEU:HD12	1:C:376:LEU:HA	1.86	0.43
1:C:453:SER:HB3	1:C:456:LEU:HD12	2.00	0.43
1:C:233:GLN:HB3	1:C:348:PHE:CE1	2.54	0.43
1:C:445:TRP:CE2	1:C:449:VAL:HG21	2.53	0.43
5:A:504:BTB:H41	5:A:504:BTB:H72	1.59	0.42
1:B:160:THR:HG23	1:B:162:THR:HG22	2.01	0.42
1:A:336:VAL:HG21	4:A:503:OSD:C07	2.49	0.42
1:A:453:SER:HB3	1:A:456:LEU:HD12	2.01	0.42
1:B:165:LEU:O	1:B:199:ARG:NH2	2.53	0.42
1:C:208:PHE:CE1	1:C:303:PHE:HB3	2.54	0.42
1:A:265:PRO:HA	1:A:268:VAL:HG23	2.00	0.42
5:B:503:BTB:H12	5:B:503:BTB:H72	1.80	0.42
1:B:202:ARG:HA	1:B:202:ARG:HD3	1.90	0.42
1:B:273:LEU:HD23	1:B:273:LEU:HA	1.80	0.42
1:D:220:ASN:HB3	1:D:223:ASN:O	2.20	0.42
1:D:140:ARG:HH21	1:D:145:ALA:HB3	1.84	0.42
1:D:216:LYS:HE3	1:D:216:LYS:HB2	1.85	0.42
1:A:254:TYR:O	1:A:261:VAL:HA	2.19	0.41
1:D:183:ARG:NH1	1:D:475:TYR:OH	2.53	0.41
1:A:229:THR:O	1:A:351:ALA:HA	2.20	0.41
5:B:507:BTB:H32	5:B:507:BTB:H51	1.87	0.41
1:C:156:GLU:O	1:C:160:THR:HG22	2.20	0.41
5:B:504:BTB:H51	5:B:504:BTB:H11	1.85	0.41
1:C:142:GLY:O	1:C:144:GLN:HG2	2.20	0.41
1:C:170:LEU:HD11	1:C:230:VAL:HG11	2.02	0.41
1:B:70:ARG:HE	1:B:79:ILE:HD13	1.86	0.41
1:C:368:CYS:SG	1:C:376:LEU:HD13	2.61	0.41
1:A:255:ARG:HG2	1:A:256:GLN:H	1.85	0.41
2:B:501:HEM:HHC	2:B:501:HEM:HBB2	2.02	0.41

Continued on next page...

Continued from previous page...

Atom-1	Atom-2	Interatomic distance (Å)	Clash overlap (Å)
4:C:509:OSD:C07	1:D:104:VAL:HG21	2.51	0.41
1:A:189:GLN:OE1	1:A:192:LYS:HE2	2.21	0.40
1:D:149:ARG:HD3	1:D:166:ARG:CZ	2.50	0.40
5:D:504:BTB:H71	5:D:504:BTB:H11	1.53	0.40
1:B:436:LYS:HE2	1:B:436:LYS:HB3	1.77	0.40
1:C:139:LYS:HE3	1:C:139:LYS:HB2	1.96	0.40
1:D:107:ARG:HB3	1:D:108:LYS:HE3	2.03	0.40
1:D:258:ASP:OD2	10:D:602:HOH:O	2.22	0.40
1:D:379:VAL:HG21	1:D:402:ILE:HD11	2.03	0.40
1:A:445:TRP:CZ2	1:A:449:VAL:HG21	2.57	0.40
1:C:124:LEU:O	1:C:128:ARG:HG3	2.22	0.40

All (1) symmetry-related close contacts are listed below. The label for Atom-2 includes the symmetry operator and encoded unit-cell translations to be applied.

Atom-1	Atom-2	Interatomic distance (Å)	Clash overlap (Å)
10:A:643:HOH:O	10:D:675:HOH:O[1_455]	2.18	0.02

5.3 Torsion angles [i](#)

5.3.1 Protein backbone [i](#)

In the following table, the Percentiles column shows the percent Ramachandran outliers of the chain as a percentile score with respect to all X-ray entries followed by that with respect to entries of similar resolution.

The Analysed column shows the number of residues for which the backbone conformation was analysed, and the total number of residues.

Mol	Chain	Analysed	Favoured	Allowed	Outliers	Percentiles
1	A	399/440 (91%)	373 (94%)	23 (6%)	3 (1%)	19 19
1	B	401/440 (91%)	391 (98%)	10 (2%)	0	100 100
1	C	399/440 (91%)	382 (96%)	16 (4%)	1 (0%)	41 46
1	D	403/440 (92%)	391 (97%)	11 (3%)	1 (0%)	47 55
All	All	1602/1760 (91%)	1537 (96%)	60 (4%)	5 (0%)	41 46

All (5) Ramachandran outliers are listed below:

Mol	Chain	Res	Type
1	D	90	GLN
1	A	283	ASN
1	C	238	ARG
1	A	238	ARG
1	A	281	PRO

5.3.2 Protein sidechains [i](#)

In the following table, the Percentiles column shows the percent sidechain outliers of the chain as a percentile score with respect to all X-ray entries followed by that with respect to entries of similar resolution.

The Analysed column shows the number of residues for which the sidechain conformation was analysed, and the total number of residues.

Mol	Chain	Analysed	Rotameric	Outliers	Percentiles	
1	A	342/373 (92%)	332 (97%)	10 (3%)	42	54
1	B	344/373 (92%)	331 (96%)	13 (4%)	33	42
1	C	342/373 (92%)	329 (96%)	13 (4%)	33	42
1	D	346/373 (93%)	334 (96%)	12 (4%)	36	46
All	All	1374/1492 (92%)	1326 (96%)	48 (4%)	36	46

All (48) residues with a non-rotameric sidechain are listed below:

Mol	Chain	Res	Type
1	A	78	SER
1	A	124	LEU
1	A	129	ASP
1	A	140	ARG
1	A	202	ARG
1	A	256	GLN
1	A	258	ASP
1	A	309	LEU
1	A	389	THR
1	A	470	SER
1	B	67	LYS
1	B	80	THR
1	B	98	ARG
1	B	103	LEU
1	B	139	LYS
1	B	140	ARG
1	B	144	GLN

Continued on next page...

Continued from previous page...

Mol	Chain	Res	Type
1	B	148	GLN
1	B	150	LEU
1	B	302	LEU
1	B	396	ASP
1	B	417	ILE
1	B	474	ARG
1	C	97	ARG
1	C	98	ARG
1	C	122	GLN
1	C	137	SER
1	C	140	ARG
1	C	143	SER
1	C	160	THR
1	C	192	LYS
1	C	235	CYS
1	C	238	ARG
1	C	240	ASP
1	C	329	ARG
1	C	389	THR
1	D	90	GLN
1	D	98	ARG
1	D	108	LYS
1	D	136	SER
1	D	224	LEU
1	D	238	ARG
1	D	245	ASN
1	D	258	ASP
1	D	262	ARG
1	D	274	CYS
1	D	294	GLN
1	D	396	ASP

Sometimes sidechains can be flipped to improve hydrogen bonding and reduce clashes. All (1) such sidechains are listed below:

Mol	Chain	Res	Type
1	A	476	GLN

5.3.3 RNA [i](#)

There are no RNA molecules in this entry.

5.4 Non-standard residues in protein, DNA, RNA chains [i](#)

There are no non-standard protein/DNA/RNA residues in this entry.

5.5 Carbohydrates [i](#)

There are no monosaccharides in this entry.

5.6 Ligand geometry [i](#)

Of 33 ligands modelled in this entry, 10 are monoatomic - leaving 23 for Mogul analysis.

In the following table, the Counts columns list the number of bonds (or angles) for which Mogul statistics could be retrieved, the number of bonds (or angles) that are observed in the model and the number of bonds (or angles) that are defined in the Chemical Component Dictionary. The Link column lists molecule types, if any, to which the group is linked. The Z score for a bond length (or angle) is the number of standard deviations the observed value is removed from the expected value. A bond length (or angle) with $|Z| > 2$ is considered an outlier worth inspection. RMSZ is the root-mean-square of all Z scores of the bond lengths (or angles).

Mol	Type	Chain	Res	Link	Bond lengths			Bond angles		
					Counts	RMSZ	# Z > 2	Counts	RMSZ	# Z > 2
4	OSD	D	502	-	26,26,26	0.84	0	36,37,37	1.04	2 (5%)
5	BTB	C	504	-	13,13,13	0.52	0	7,16,16	0.49	0
7	GOL	A	507	-	5,5,5	0.40	0	5,5,5	0.23	0
4	OSD	A	503	-	26,26,26	0.90	1 (3%)	36,37,37	1.16	4 (11%)
2	HEM	A	501	1	41,50,50	1.53	6 (14%)	45,82,82	1.82	14 (31%)
5	BTB	B	504	-	13,13,13	0.42	0	7,16,16	0.75	0
5	BTB	A	505	-	13,13,13	0.45	0	7,16,16	0.66	0
5	BTB	B	503	9	13,13,13	0.49	0	7,16,16	0.68	0
2	HEM	B	501	1	41,50,50	1.44	6 (14%)	45,82,82	1.90	12 (26%)
5	BTB	B	508	-	13,13,13	0.81	0	7,16,16	1.80	3 (42%)
5	BTB	A	504	9	13,13,13	0.49	0	7,16,16	1.02	0
5	BTB	B	507	9	13,13,13	0.54	0	7,16,16	1.02	1 (14%)
3	H4B	C	502	-	16,18,18	1.23	2 (12%)	11,26,26	2.80	7 (63%)
5	BTB	D	504	-	13,13,13	1.04	0	7,16,16	1.51	2 (28%)
5	BTB	D	503	9	13,13,13	0.47	0	7,16,16	0.60	0
7	GOL	C	506	-	5,5,5	0.47	0	5,5,5	0.26	0
2	HEM	C	501	1	41,50,50	1.61	7 (17%)	45,82,82	1.95	12 (26%)
4	OSD	A	510	-	26,26,26	0.95	1 (3%)	36,37,37	1.75	8 (22%)
3	H4B	A	502	-	16,18,18	0.95	0	11,26,26	2.66	6 (54%)
2	HEM	D	501	1	41,50,50	1.55	6 (14%)	45,82,82	1.85	15 (33%)

Mol	Type	Chain	Res	Link	Bond lengths			Bond angles		
					Counts	RMSZ	# Z > 2	Counts	RMSZ	# Z > 2
4	OSD	C	509	-	26,26,26	0.97	1 (3%)	36,37,37	1.46	7 (19%)
4	OSD	B	502	-	26,26,26	0.95	1 (3%)	36,37,37	1.60	7 (19%)
4	OSD	C	503	-	26,26,26	1.01	2 (7%)	36,37,37	1.20	4 (11%)

In the following table, the Chirals column lists the number of chiral outliers, the number of chiral centers analysed, the number of these observed in the model and the number defined in the Chemical Component Dictionary. Similar counts are reported in the Torsion and Rings columns. '-' means no outliers of that kind were identified.

Mol	Type	Chain	Res	Link	Chirals	Torsions	Rings
4	OSD	D	502	-	-	0/10/10/10	0/3/3/3
5	BTB	C	504	-	-	5/21/21/21	-
7	GOL	A	507	-	-	2/4/4/4	-
4	OSD	A	503	-	-	3/10/10/10	0/3/3/3
2	HEM	A	501	1	-	7/12/54/54	-
5	BTB	B	504	-	-	5/21/21/21	-
5	BTB	A	505	-	-	7/21/21/21	-
5	BTB	B	503	9	-	3/21/21/21	-
2	HEM	B	501	1	-	0/12/54/54	-
5	BTB	B	508	-	-	8/21/21/21	-
5	BTB	A	504	9	-	3/21/21/21	-
5	BTB	B	507	9	-	6/21/21/21	-
3	H4B	C	502	-	-	3/8/17/17	0/2/2/2
5	BTB	D	504	-	-	15/21/21/21	-
5	BTB	D	503	9	-	5/21/21/21	-
7	GOL	C	506	-	-	4/4/4/4	-
2	HEM	C	501	1	-	5/12/54/54	-
4	OSD	A	510	-	-	2/10/10/10	0/3/3/3
3	H4B	A	502	-	-	3/8/17/17	0/2/2/2
2	HEM	D	501	1	-	3/12/54/54	-
4	OSD	C	509	-	-	4/10/10/10	0/3/3/3
4	OSD	B	502	-	-	2/10/10/10	0/3/3/3
4	OSD	C	503	-	-	4/10/10/10	0/3/3/3

All (33) bond length outliers are listed below:

Mol	Chain	Res	Type	Atoms	Z	Observed(Å)	Ideal(Å)
2	C	501	HEM	C3C-CAC	4.29	1.56	1.47
2	D	501	HEM	C3C-C2C	-4.01	1.34	1.40
2	C	501	HEM	FE-NB	3.98	2.16	1.96
2	D	501	HEM	C3C-CAC	3.80	1.55	1.47
2	B	501	HEM	C3C-CAC	3.69	1.55	1.47
2	A	501	HEM	C3C-CAC	3.56	1.55	1.47
2	A	501	HEM	C3C-C2C	-3.29	1.35	1.40
2	B	501	HEM	C3C-C2C	-3.24	1.35	1.40
2	A	501	HEM	CAB-C3B	3.20	1.56	1.47
2	B	501	HEM	CAB-C3B	3.12	1.55	1.47
2	C	501	HEM	CAB-C3B	3.08	1.55	1.47
2	D	501	HEM	CAB-C3B	2.98	1.55	1.47
2	D	501	HEM	FE-NB	2.85	2.11	1.96
4	B	502	OSD	C09-C10	-2.85	1.37	1.41
2	C	501	HEM	C3C-C2C	-2.81	1.36	1.40
2	C	501	HEM	CMB-C2B	2.76	1.56	1.50
4	C	509	OSD	C03-C04	2.65	1.41	1.37
2	A	501	HEM	FE-NB	2.62	2.09	1.96
3	C	502	H4B	C4A-C4	-2.60	1.38	1.41
2	A	501	HEM	FE-ND	2.51	2.09	1.96
2	B	501	HEM	FE-ND	2.47	2.09	1.96
2	A	501	HEM	CMD-C2D	2.44	1.56	1.50
4	C	503	OSD	C02-N01	2.40	1.36	1.33
4	C	503	OSD	C05-C10	-2.26	1.38	1.42
4	A	510	OSD	C03-C04	2.22	1.41	1.37
2	D	501	HEM	C3B-C2B	-2.20	1.32	1.37
3	C	502	H4B	C4-N3	2.18	1.36	1.33
4	A	503	OSD	C05-C10	-2.16	1.38	1.42
2	B	501	HEM	CMB-C2B	2.14	1.55	1.50
2	B	501	HEM	CHA-C4D	2.12	1.40	1.35
2	C	501	HEM	FE-ND	2.09	2.07	1.96
2	C	501	HEM	CMD-C2D	2.06	1.55	1.50
2	D	501	HEM	CMB-C2B	2.02	1.55	1.50

All (104) bond angle outliers are listed below:

Mol	Chain	Res	Type	Atoms	Z	Observed(°)	Ideal(°)
2	C	501	HEM	C4B-CHC-C1C	5.75	130.15	122.56
3	C	502	H4B	C8A-C4A-C4	5.55	119.50	114.57
4	A	510	OSD	C04-C05-C10	5.38	120.92	118.01
2	C	501	HEM	CBA-CAA-C2A	-5.12	103.88	112.62
3	A	502	H4B	C8A-C4A-C4	5.02	119.03	114.57
2	B	501	HEM	CBD-CAD-C3D	-4.46	100.25	112.63

Continued on next page...

Continued from previous page...

Mol	Chain	Res	Type	Atoms	Z	Observed(°)	Ideal(°)
4	B	502	OSD	C24-O29-C30	4.33	127.88	119.53
2	C	501	HEM	CBD-CAD-C3D	-4.23	100.86	112.63
4	C	509	OSD	O29-C24-C25	4.22	123.48	116.04
2	A	501	HEM	C3B-C2B-C1B	4.16	109.57	106.49
2	B	501	HEM	C4D-ND-C1D	3.93	109.13	105.07
2	D	501	HEM	CAD-CBD-CGD	-3.90	105.22	113.60
2	B	501	HEM	C1B-NB-C4B	3.77	108.97	105.07
2	B	501	HEM	C3B-C2B-C1B	3.70	109.23	106.49
3	C	502	H4B	C2-N3-C4	3.67	121.77	115.93
2	A	501	HEM	CMA-C3A-C4A	-3.65	122.85	128.46
3	A	502	H4B	N1-C2-N3	-3.62	119.74	125.42
3	C	502	H4B	N1-C2-N3	-3.62	119.74	125.42
2	D	501	HEM	C4D-ND-C1D	3.54	108.73	105.07
2	B	501	HEM	C3D-C4D-ND	-3.46	106.31	110.17
4	B	502	OSD	C08-C09-C10	-3.33	118.52	121.44
2	A	501	HEM	C4C-CHD-C1D	3.30	126.91	122.56
3	A	502	H4B	C2-N3-C4	3.28	121.14	115.93
4	B	502	OSD	C04-C05-C10	3.27	119.78	118.01
2	A	501	HEM	C1B-NB-C4B	3.25	108.43	105.07
2	D	501	HEM	C3D-C4D-ND	-3.24	106.56	110.17
3	C	502	H4B	N2-C2-N3	3.23	122.28	117.25
4	C	509	OSD	C04-C05-C10	3.19	119.74	118.01
4	C	503	OSD	C04-C05-C10	3.18	119.73	118.01
2	D	501	HEM	CMA-C3A-C4A	-3.16	123.61	128.46
2	C	501	HEM	C1B-NB-C4B	3.16	108.34	105.07
2	A	501	HEM	CMD-C2D-C1D	-3.14	120.26	125.04
2	D	501	HEM	C4B-CHC-C1C	3.11	126.67	122.56
2	B	501	HEM	C4B-CHC-C1C	3.09	126.63	122.56
2	B	501	HEM	CMA-C3A-C4A	-3.08	123.72	128.46
4	A	510	OSD	C08-C09-C10	-3.04	118.78	121.44
2	D	501	HEM	C3B-C2B-C1B	3.03	108.73	106.49
2	A	501	HEM	C4A-C3A-C2A	3.01	109.09	107.00
2	C	501	HEM	C4D-ND-C1D	3.00	108.17	105.07
2	A	501	HEM	C4D-ND-C1D	2.99	108.16	105.07
4	A	510	OSD	C24-O29-C30	2.95	125.21	119.53
2	D	501	HEM	CBA-CAA-C2A	-2.92	107.64	112.62
2	D	501	HEM	CHD-C1D-ND	2.90	127.58	124.43
5	B	508	BTB	O4-C4-C2	-2.90	103.51	111.44
2	D	501	HEM	C1B-NB-C4B	2.89	108.06	105.07
4	A	503	OSD	C05-C10-N01	-2.88	119.76	122.81
3	A	502	H4B	C2-N1-C8A	2.83	120.89	114.54
4	C	509	OSD	O29-C24-C23	-2.83	117.23	123.87

Continued on next page...

Continued from previous page...

Mol	Chain	Res	Type	Atoms	Z	Observed(°)	Ideal(°)
5	D	504	BTB	C6-C5-N	2.80	122.51	111.59
4	A	510	OSD	C26-C21-C08	-2.79	116.25	120.86
4	A	510	OSD	C26-C25-C24	2.73	121.13	118.26
4	C	509	OSD	N02-C02-N01	-2.71	116.01	118.26
2	C	501	HEM	CMA-C3A-C4A	-2.69	124.33	128.46
4	A	510	OSD	C05-C10-N01	-2.67	119.98	122.81
2	A	501	HEM	CHD-C1D-ND	2.66	127.32	124.43
4	C	503	OSD	C05-C10-N01	-2.64	120.01	122.81
3	A	502	H4B	C4-C4A-N5	2.63	121.33	119.12
2	C	501	HEM	C3D-C4D-ND	-2.58	107.30	110.17
2	B	501	HEM	CMC-C2C-C3C	2.56	129.46	124.68
2	B	501	HEM	CHB-C1B-NB	2.55	127.53	124.38
5	B	508	BTB	C8-C7-N	2.55	121.54	111.59
4	A	510	OSD	C06-C05-C04	-2.55	118.79	123.66
2	C	501	HEM	CAD-C3D-C2D	-2.54	123.16	127.88
3	C	502	H4B	C4A-N5-C6	-2.53	114.28	121.16
2	D	501	HEM	C4C-CHD-C1D	2.53	125.89	122.56
4	A	510	OSD	C07-C08-C21	-2.49	117.03	121.36
4	D	502	OSD	C04-C05-C10	2.48	119.35	118.01
5	B	507	BTB	O4-C4-C2	2.48	118.23	111.44
2	C	501	HEM	CHC-C4B-C3B	2.44	128.31	124.57
4	A	503	OSD	C04-C05-C10	2.44	119.33	118.01
3	C	502	H4B	C2-N1-C8A	2.44	120.00	114.54
4	B	502	OSD	C06-C05-C10	2.40	121.01	118.33
5	B	508	BTB	O1-C1-C2	-2.38	104.92	111.44
3	A	502	H4B	N2-C2-N3	2.34	120.89	117.25
5	D	504	BTB	C8-C7-N	2.34	120.70	111.59
4	B	502	OSD	C06-C05-C04	-2.33	119.21	123.66
4	A	503	OSD	C03-C04-C05	2.33	120.07	117.78
2	B	501	HEM	C2B-C1B-NB	-2.32	107.09	109.84
4	B	502	OSD	C22-C21-C26	2.30	121.42	118.16
2	C	501	HEM	CAD-C3D-C4D	2.25	128.60	124.66
2	D	501	HEM	C2D-C1D-ND	-2.23	107.21	109.88
4	D	502	OSD	C05-C10-N01	-2.21	120.47	122.81
2	C	501	HEM	CAD-CBD-CGD	2.21	118.35	113.60
4	B	502	OSD	C07-C08-C09	2.19	121.52	118.09
4	C	509	OSD	C11-C04-C05	-2.14	117.77	121.08
2	D	501	HEM	CMC-C2C-C3C	2.14	128.67	124.68
2	B	501	HEM	CHC-C4B-C3B	2.12	127.82	124.57
2	B	501	HEM	CAA-CBA-CGA	-2.09	107.90	113.76
4	C	503	OSD	C03-C04-C05	2.09	119.84	117.78
2	D	501	HEM	C2B-C1B-NB	-2.09	107.37	109.84

Continued on next page...

Continued from previous page...

Mol	Chain	Res	Type	Atoms	Z	Observed(°)	Ideal(°)
3	C	502	H4B	C4A-C4-N3	-2.08	118.09	124.01
4	C	509	OSD	C11-C04-C03	2.08	123.78	120.74
2	A	501	HEM	CBD-CAD-C3D	-2.08	106.86	112.63
2	C	501	HEM	C4A-C3A-C2A	2.07	108.44	107.00
2	D	501	HEM	C4A-C3A-C2A	2.06	108.43	107.00
2	A	501	HEM	CHC-C4B-C3B	2.06	127.72	124.57
2	A	501	HEM	C2B-C1B-NB	-2.06	107.40	109.84
4	C	503	OSD	C26-C21-C08	-2.05	117.47	120.86
4	C	509	OSD	C26-C25-C24	2.05	120.41	118.26
2	D	501	HEM	C4D-C3D-C2D	2.04	109.87	106.90
2	A	501	HEM	C3D-C4D-ND	-2.03	107.91	110.17
2	A	501	HEM	C4B-CHC-C1C	2.03	125.23	122.56
4	A	503	OSD	C26-C21-C08	-2.03	117.51	120.86
2	A	501	HEM	CMD-C2D-C3D	2.02	131.60	126.12

There are no chirality outliers.

All (99) torsion outliers are listed below:

Mol	Chain	Res	Type	Atoms
2	A	501	HEM	C2D-C3D-CAD-CBD
5	A	504	BTB	O1-C1-C2-C3
5	A	505	BTB	O1-C1-C2-C3
5	A	505	BTB	O1-C1-C2-C4
5	A	505	BTB	O1-C1-C2-N
5	A	505	BTB	C1-C2-C3-O3
5	A	505	BTB	C4-C2-C3-O3
5	A	505	BTB	N-C2-C3-O3
5	B	504	BTB	C1-C2-C4-O4
5	B	504	BTB	C3-C2-C4-O4
5	B	504	BTB	N-C2-C4-O4
5	B	504	BTB	C8-C7-N-C5
5	B	507	BTB	C1-C2-C4-O4
5	B	507	BTB	C3-C2-C4-O4
5	B	508	BTB	C1-C2-C3-O3
5	B	508	BTB	C4-C2-C3-O3
5	B	508	BTB	N-C2-C3-O3
5	B	508	BTB	C8-C7-N-C2
5	C	504	BTB	C3-C2-N-C7
5	D	503	BTB	O1-C1-C2-C3
5	D	503	BTB	O1-C1-C2-C4
5	D	503	BTB	O1-C1-C2-N
5	D	503	BTB	C3-C2-C4-O4

Continued on next page...

Continued from previous page...

Mol	Chain	Res	Type	Atoms
5	D	504	BTB	O1-C1-C2-C4
5	D	504	BTB	O1-C1-C2-N
5	D	504	BTB	C1-C2-C4-O4
5	D	504	BTB	C3-C2-C4-O4
5	D	504	BTB	N-C2-C4-O4
5	D	504	BTB	C1-C2-N-C7
5	D	504	BTB	C3-C2-N-C7
5	D	504	BTB	C4-C2-N-C7
5	D	504	BTB	C8-C7-N-C5
7	A	507	GOL	O1-C1-C2-C3
2	A	501	HEM	C4D-C3D-CAD-CBD
2	A	501	HEM	C3D-CAD-CBD-CGD
2	A	501	HEM	C2A-CAA-CBA-CGA
5	D	504	BTB	N-C5-C6-O6
5	A	505	BTB	N-C7-C8-O8
3	C	502	H4B	C7-C6-C9-O9
5	D	504	BTB	N-C7-C8-O8
4	A	503	OSD	C24-C25-C27-N28
4	C	509	OSD	C31-C30-O29-C24
7	C	506	GOL	O1-C1-C2-C3
4	C	509	OSD	C32-C30-O29-C24
5	B	504	BTB	N-C7-C8-O8
4	B	502	OSD	C31-C30-O29-C24
3	A	502	H4B	C7-C6-C9-O9
2	D	501	HEM	C2A-CAA-CBA-CGA
7	A	507	GOL	O1-C1-C2-O2
7	C	506	GOL	O1-C1-C2-O2
4	A	510	OSD	C31-C30-O29-C24
3	A	502	H4B	C7-C6-C9-C10
2	C	501	HEM	C3D-CAD-CBD-CGD
4	A	510	OSD	C32-C30-O29-C24
7	C	506	GOL	O2-C2-C3-O3
4	A	503	OSD	C31-C30-O29-C24
2	C	501	HEM	C2A-CAA-CBA-CGA
4	A	503	OSD	C32-C30-O29-C24
2	A	501	HEM	C4B-C3B-CAB-CBB
2	C	501	HEM	C4B-C3B-CAB-CBB
4	C	503	OSD	C31-C30-O29-C24
4	C	509	OSD	C25-C24-O29-C30
5	B	507	BTB	N-C7-C8-O8
5	A	504	BTB	O1-C1-C2-C4
5	D	504	BTB	C6-C5-N-C2

Continued on next page...

Continued from previous page...

Mol	Chain	Res	Type	Atoms
5	A	504	BTB	O1-C1-C2-N
5	B	503	BTB	O1-C1-C2-N
5	B	507	BTB	N-C2-C4-O4
5	B	508	BTB	O1-C1-C2-N
5	B	508	BTB	N-C2-C4-O4
5	C	504	BTB	C1-C2-N-C5
5	C	504	BTB	C1-C2-N-C7
5	C	504	BTB	C4-C2-N-C5
5	C	504	BTB	C4-C2-N-C7
5	D	504	BTB	C3-C2-N-C5
5	D	504	BTB	C4-C2-N-C5
5	D	503	BTB	N-C5-C6-O6
4	C	503	OSD	C32-C30-O29-C24
3	C	502	H4B	C7-C6-C9-C10
4	C	509	OSD	C23-C24-O29-C30
7	C	506	GOL	C1-C2-C3-O3
2	A	501	HEM	CAD-CBD-CGD-O2D
4	C	503	OSD	C23-C24-O29-C30
2	C	501	HEM	CAA-CBA-CGA-O2A
4	B	502	OSD	C26-C25-C27-N28
2	A	501	HEM	CAD-CBD-CGD-O1D
2	C	501	HEM	CAA-CBA-CGA-O1A
2	D	501	HEM	CAD-CBD-CGD-O2D
4	C	503	OSD	C25-C24-O29-C30
3	A	502	H4B	N5-C6-C9-O9
3	C	502	H4B	N5-C6-C9-O9
2	D	501	HEM	CAD-CBD-CGD-O1D
5	B	503	BTB	O1-C1-C2-C3
5	B	503	BTB	O1-C1-C2-C4
5	B	507	BTB	O1-C1-C2-C3
5	B	507	BTB	O1-C1-C2-C4
5	B	508	BTB	O1-C1-C2-C3
5	B	508	BTB	O1-C1-C2-C4
5	D	504	BTB	O1-C1-C2-C3

There are no ring outliers.

22 monomers are involved in 47 short contacts:

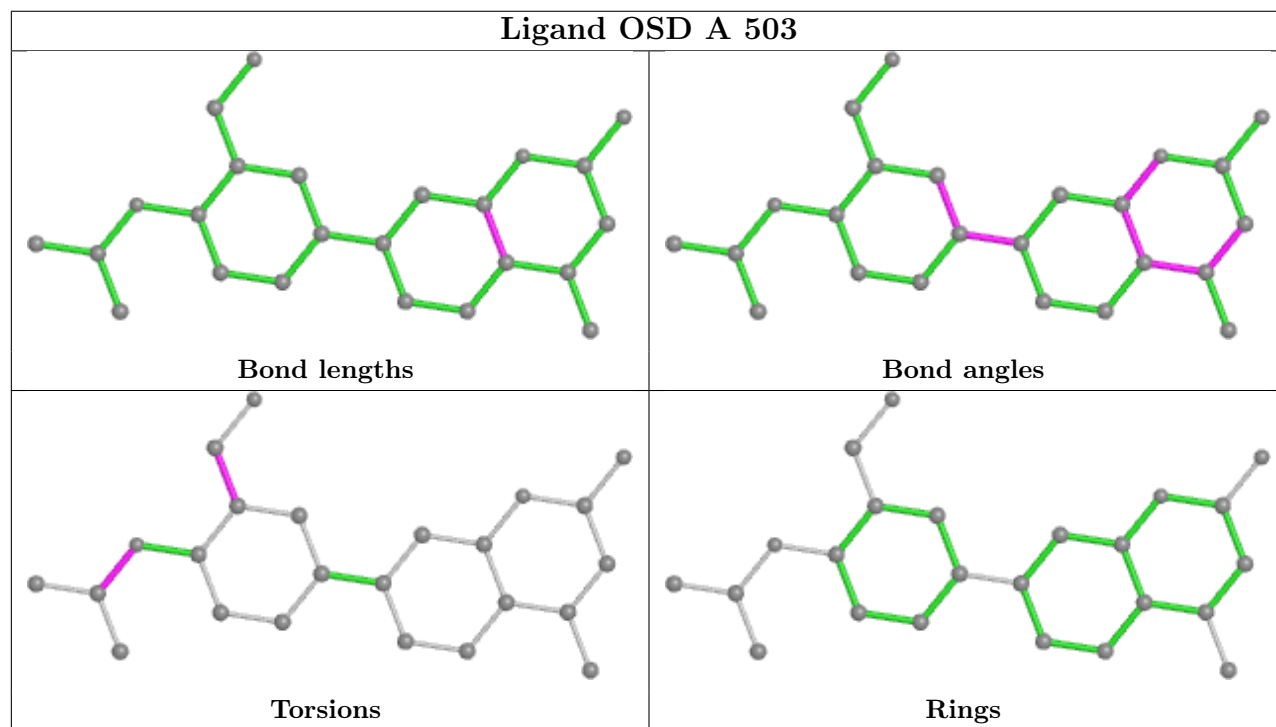
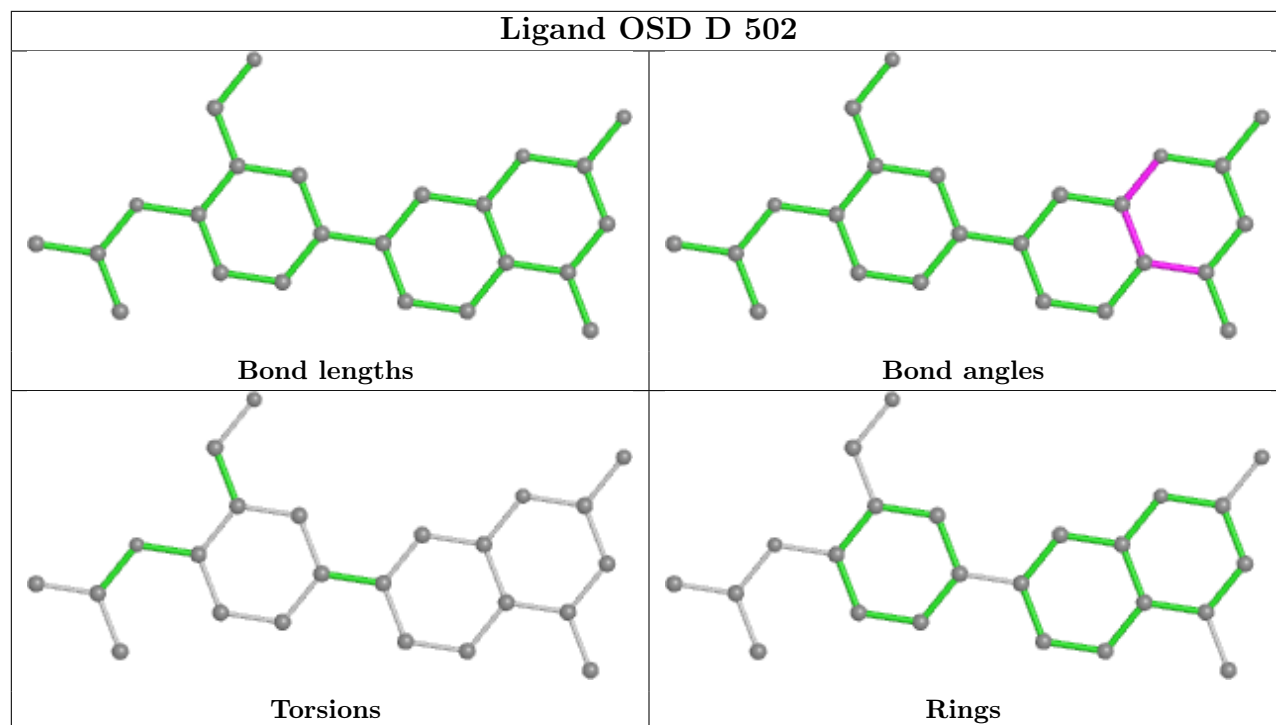
Mol	Chain	Res	Type	Clashes	Symm-Clashes
4	D	502	OSD	2	0
5	C	504	BTB	1	0
7	A	507	GOL	1	0

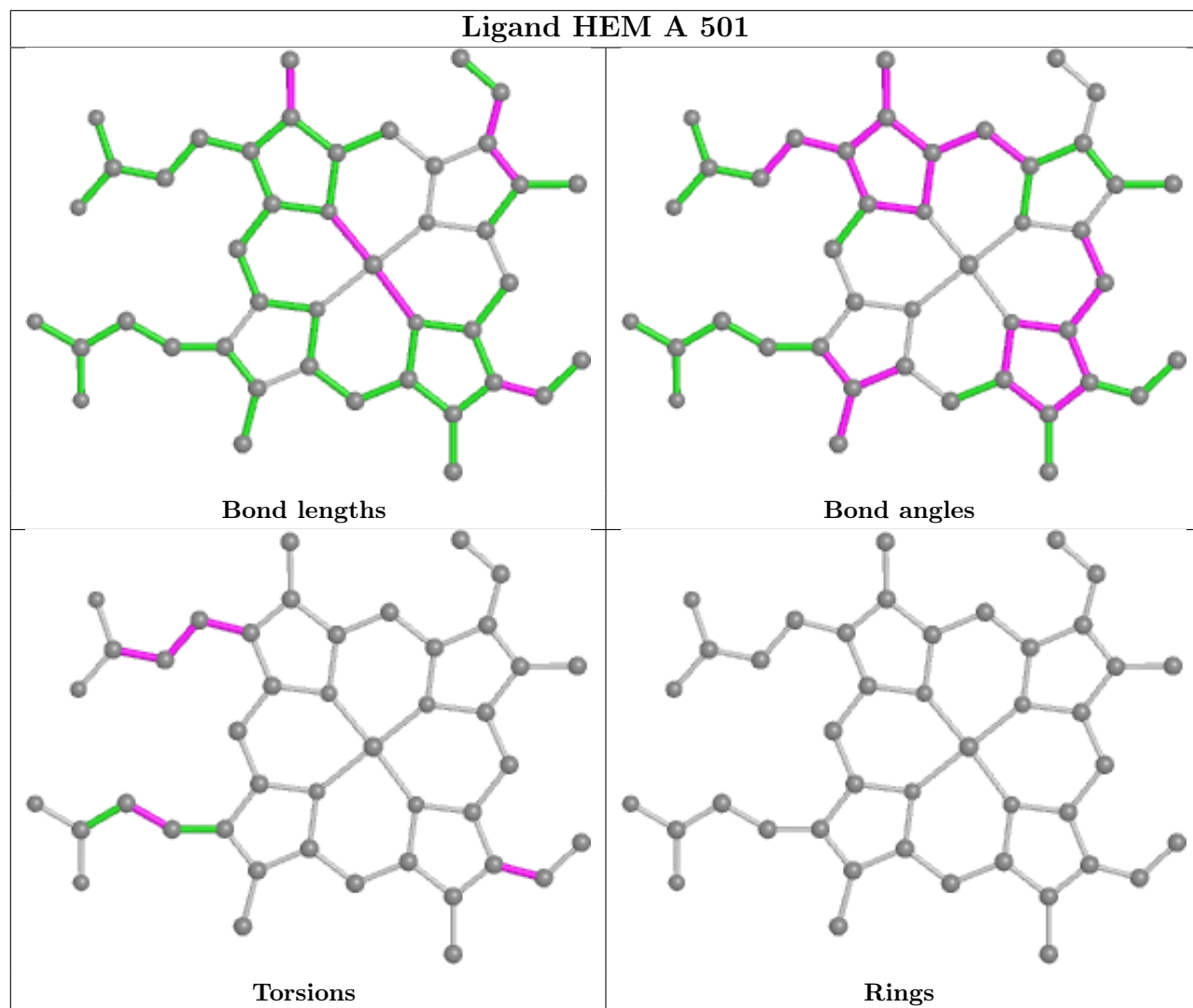
Continued on next page...

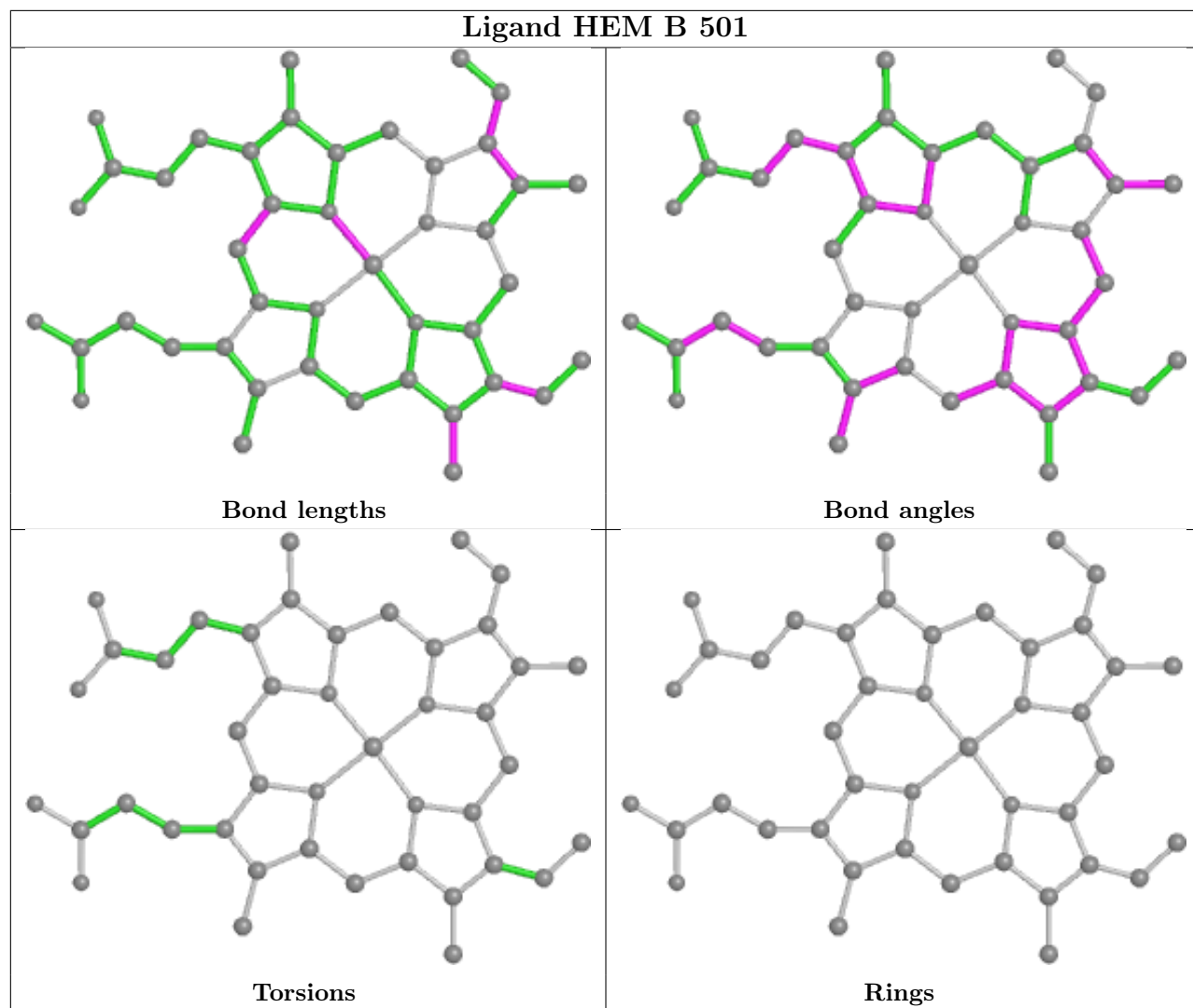
Continued from previous page...

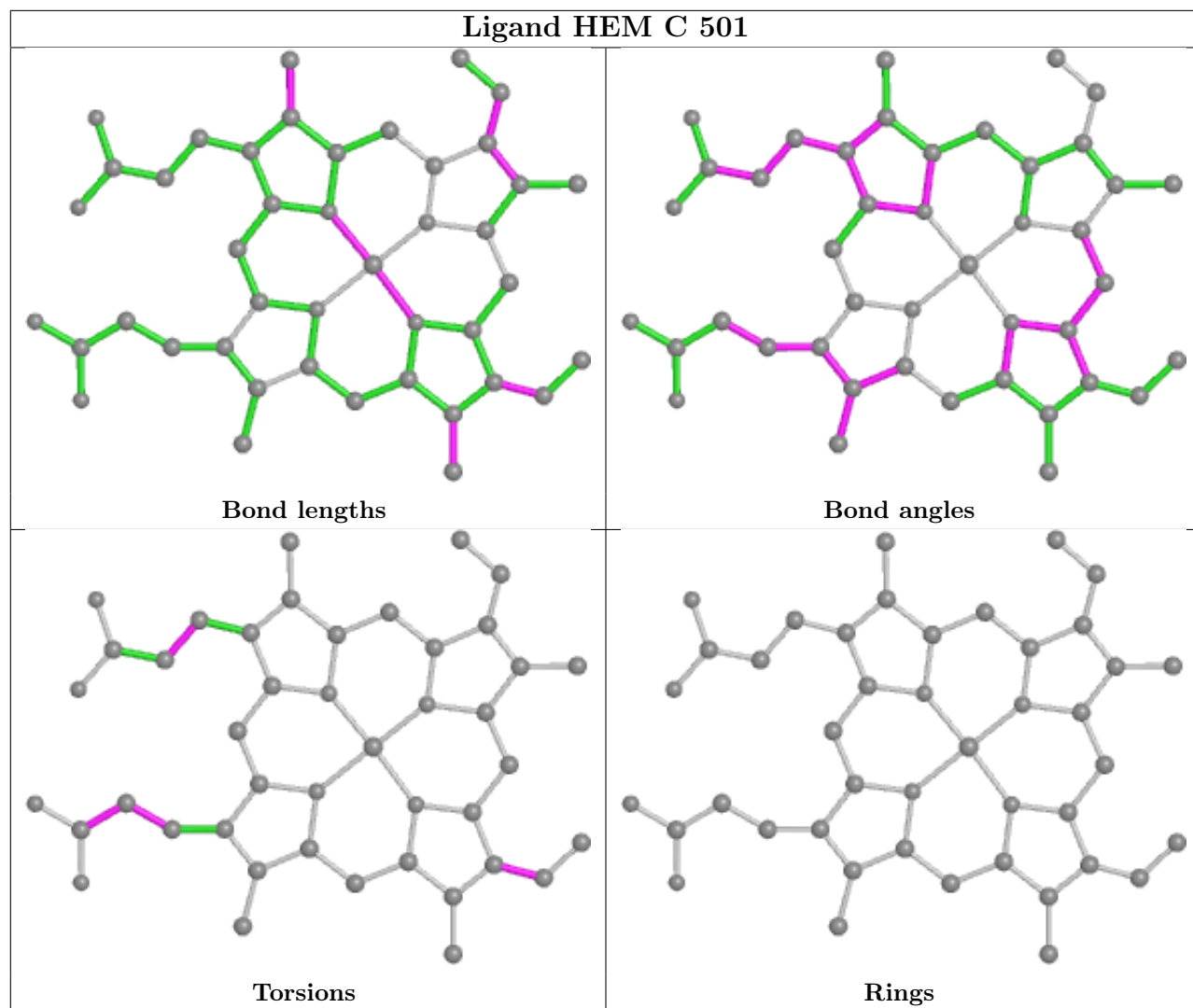
Mol	Chain	Res	Type	Clashes	Symm-Clashes
4	A	503	OSD	2	0
2	A	501	HEM	4	0
5	B	504	BTB	3	0
5	A	505	BTB	2	0
5	B	503	BTB	1	0
2	B	501	HEM	4	0
5	B	508	BTB	1	0
5	A	504	BTB	4	0
5	B	507	BTB	3	0
3	C	502	H4B	2	0
5	D	504	BTB	3	0
5	D	503	BTB	1	0
7	C	506	GOL	1	0
2	C	501	HEM	5	0
3	A	502	H4B	1	0
2	D	501	HEM	4	0
4	C	509	OSD	1	0
4	B	502	OSD	1	0
4	C	503	OSD	3	0

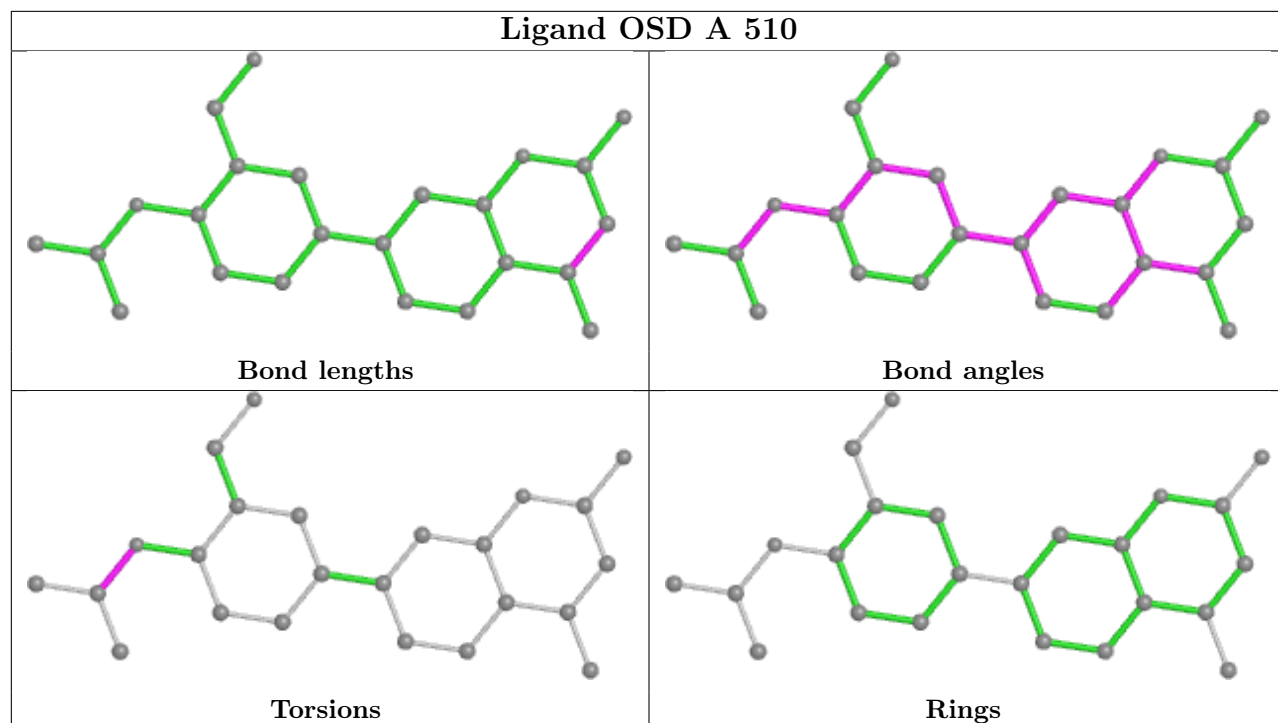
The following is a two-dimensional graphical depiction of Mogul quality analysis of bond lengths, bond angles, torsion angles, and ring geometry for all instances of the Ligand of Interest. In addition, ligands with molecular weight > 250 and outliers as shown on the validation Tables will also be included. For torsion angles, if less than 5% of the Mogul distribution of torsion angles is within 10 degrees of the torsion angle in question, then that torsion angle is considered an outlier. Any bond that is central to one or more torsion angles identified as an outlier by Mogul will be highlighted in the graph. For rings, the root-mean-square deviation (RMSD) between the ring in question and similar rings identified by Mogul is calculated over all ring torsion angles. If the average RMSD is greater than 60 degrees and the minimal RMSD between the ring in question and any Mogul-identified rings is also greater than 60 degrees, then that ring is considered an outlier. The outliers are highlighted in purple. The color gray indicates Mogul did not find sufficient equivalents in the CSD to analyse the geometry.

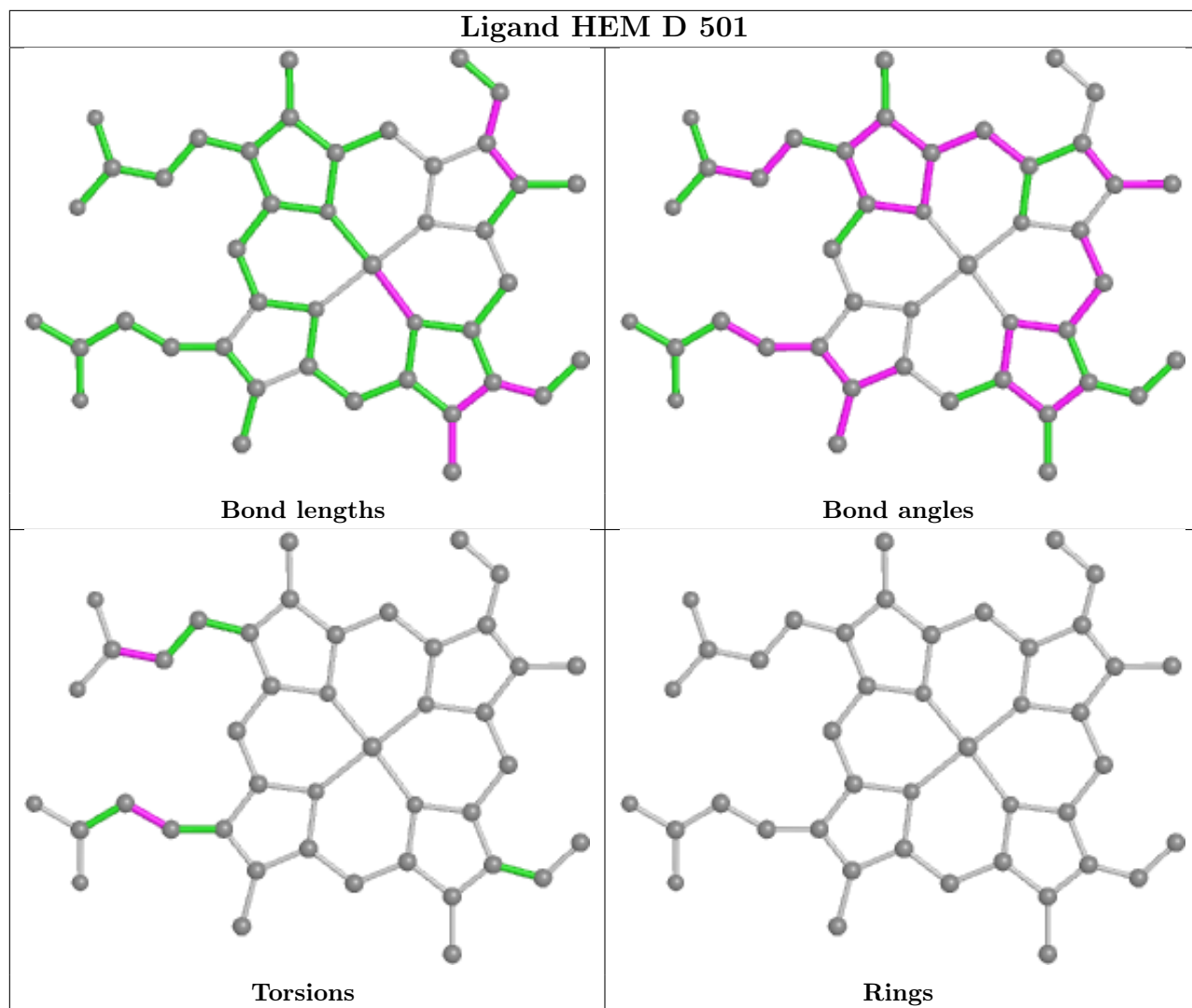


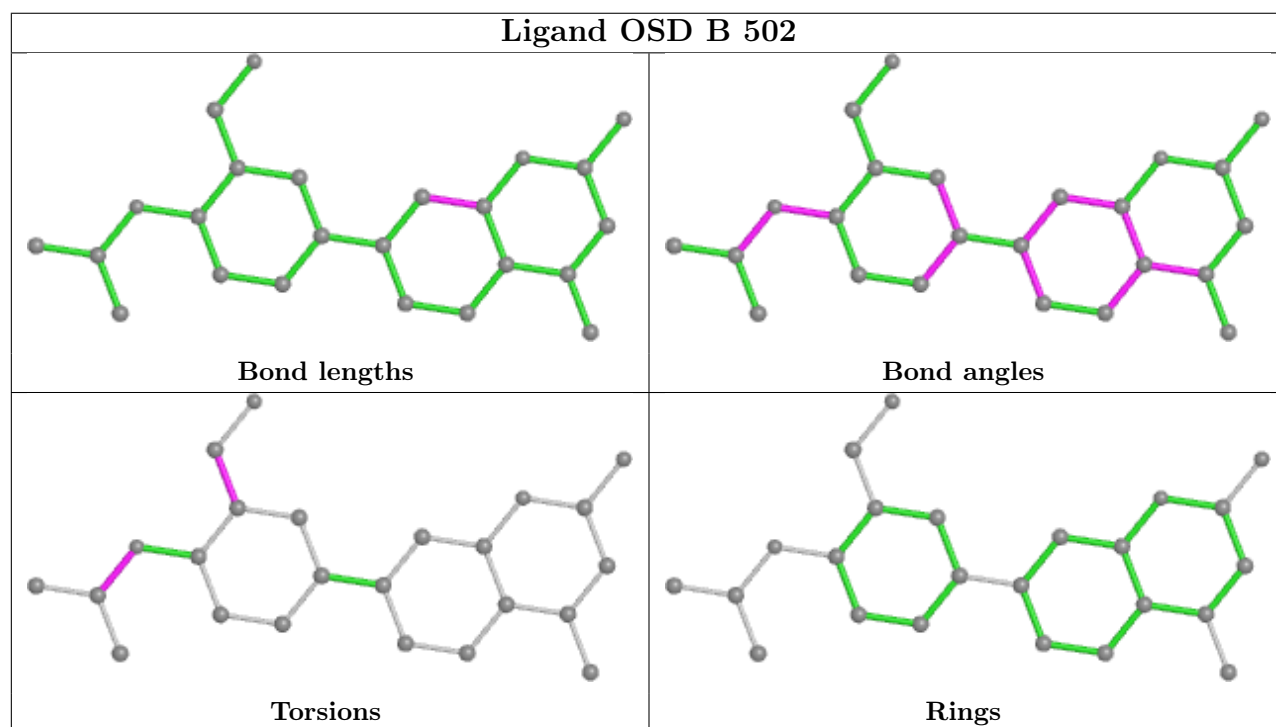
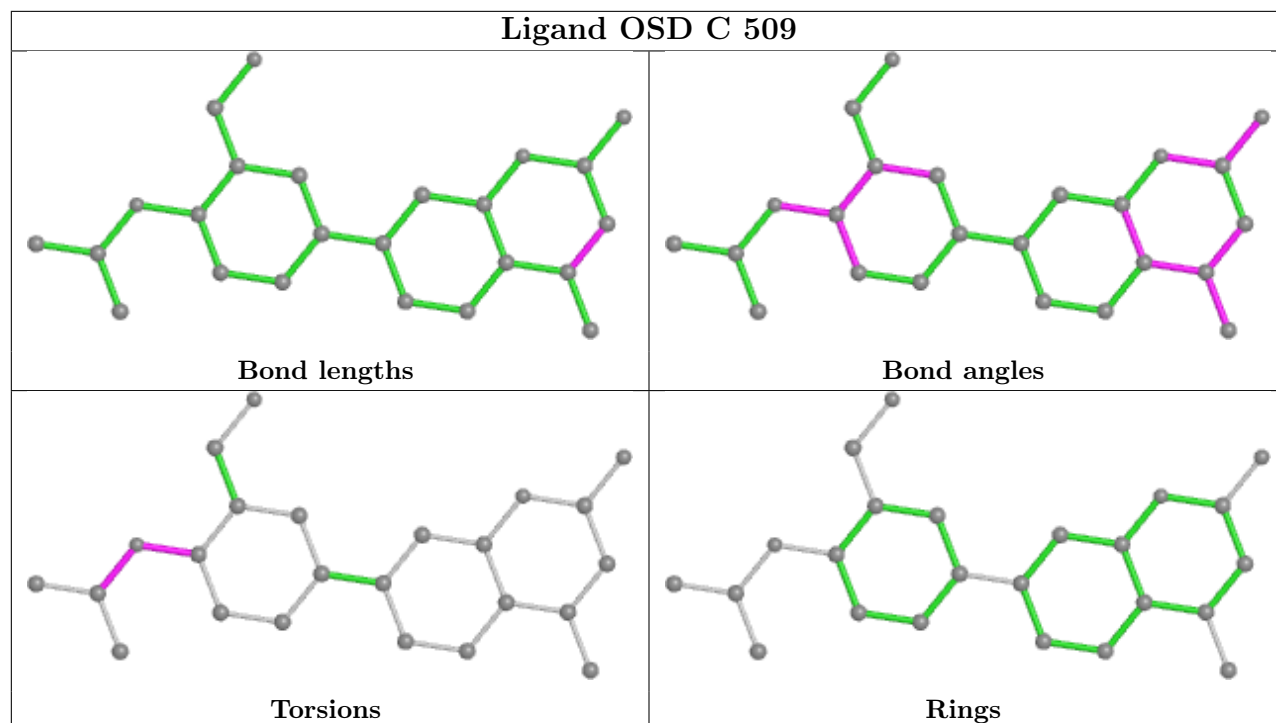


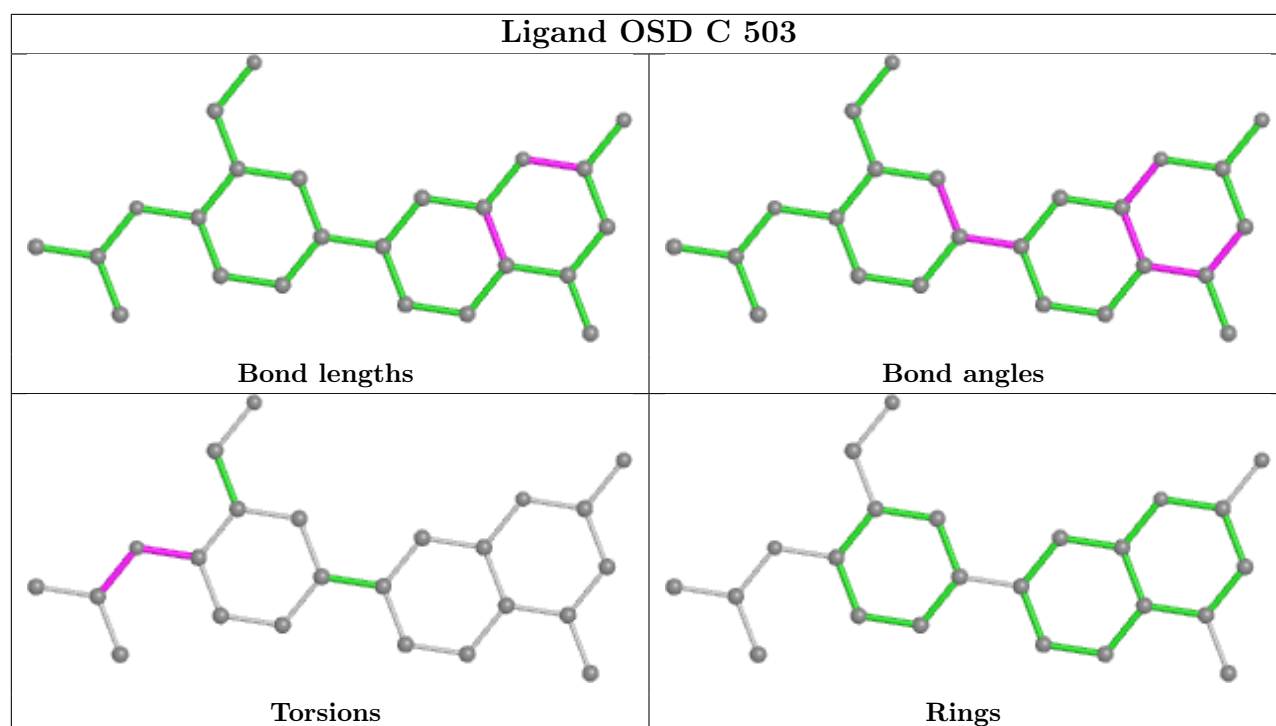












5.7 Other polymers [i](#)

There are no such residues in this entry.

5.8 Polymer linkage issues [i](#)

There are no chain breaks in this entry.

6 Fit of model and data

6.1 Protein, DNA and RNA chains

In the following table, the column labelled ‘#RSRZ > 2’ contains the number (and percentage) of RSRZ outliers, followed by percent RSRZ outliers for the chain as percentile scores relative to all X-ray entries and entries of similar resolution. The OWAB column contains the minimum, median, 95th percentile and maximum values of the occupancy-weighted average B-factor per residue. The column labelled ‘Q < 0.9’ lists the number of (and percentage) of residues with an average occupancy less than 0.9.

Mol	Chain	Analysed	<RSRZ>	#RSRZ>2	OWAB(Å ²)	Q<0.9
1	A	401/440 (91%)	0.15	17 (4%) 36 34	35, 70, 128, 171	0
1	B	402/440 (91%)	-0.20	2 (0%) 91 90	31, 50, 94, 132	0
1	C	401/440 (91%)	-0.13	4 (0%) 82 81	34, 60, 103, 141	0
1	D	404/440 (91%)	-0.20	4 (0%) 82 81	29, 52, 90, 136	0
All	All	1608/1760 (91%)	-0.09	27 (1%) 70 68	29, 58, 110, 171	0

All (27) RSRZ outliers are listed below:

Mol	Chain	Res	Type	RSRZ
1	A	144	GLN	4.8
1	A	163	TYR	4.6
1	A	162	THR	4.2
1	A	106	PRO	4.0
1	A	119	ALA	3.9
1	D	259	GLY	3.7
1	A	159	ALA	3.6
1	A	153	VAL	3.6
1	C	258	ASP	3.5
1	A	257	GLN	3.1
1	A	259	GLY	2.8
1	A	480	TRP	2.7
1	C	304	LEU	2.7
1	C	204	ALA	2.6
1	A	303	PHE	2.5
1	A	90	GLN	2.4
1	B	89	GLN	2.4
1	A	346	LEU	2.3
1	D	89	GLN	2.3
1	C	299	PRO	2.3
1	A	304	LEU	2.2

Continued on next page...

Continued from previous page...

Mol	Chain	Res	Type	RSRZ
1	A	160	THR	2.2
1	B	90	GLN	2.2
1	A	244	TRP	2.2
1	D	67	LYS	2.1
1	D	257	GLN	2.1
1	A	89	GLN	2.0

6.2 Non-standard residues in protein, DNA, RNA chains [i](#)

There are no non-standard protein/DNA/RNA residues in this entry.

6.3 Carbohydrates [i](#)

There are no monosaccharides in this entry.

6.4 Ligands [i](#)

In the following table, the Atoms column lists the number of modelled atoms in the group and the number defined in the chemical component dictionary. The B-factors column lists the minimum, median, 95th percentile and maximum values of B factors of atoms in the group. The column labelled 'Q< 0.9' lists the number of atoms with occupancy less than 0.9.

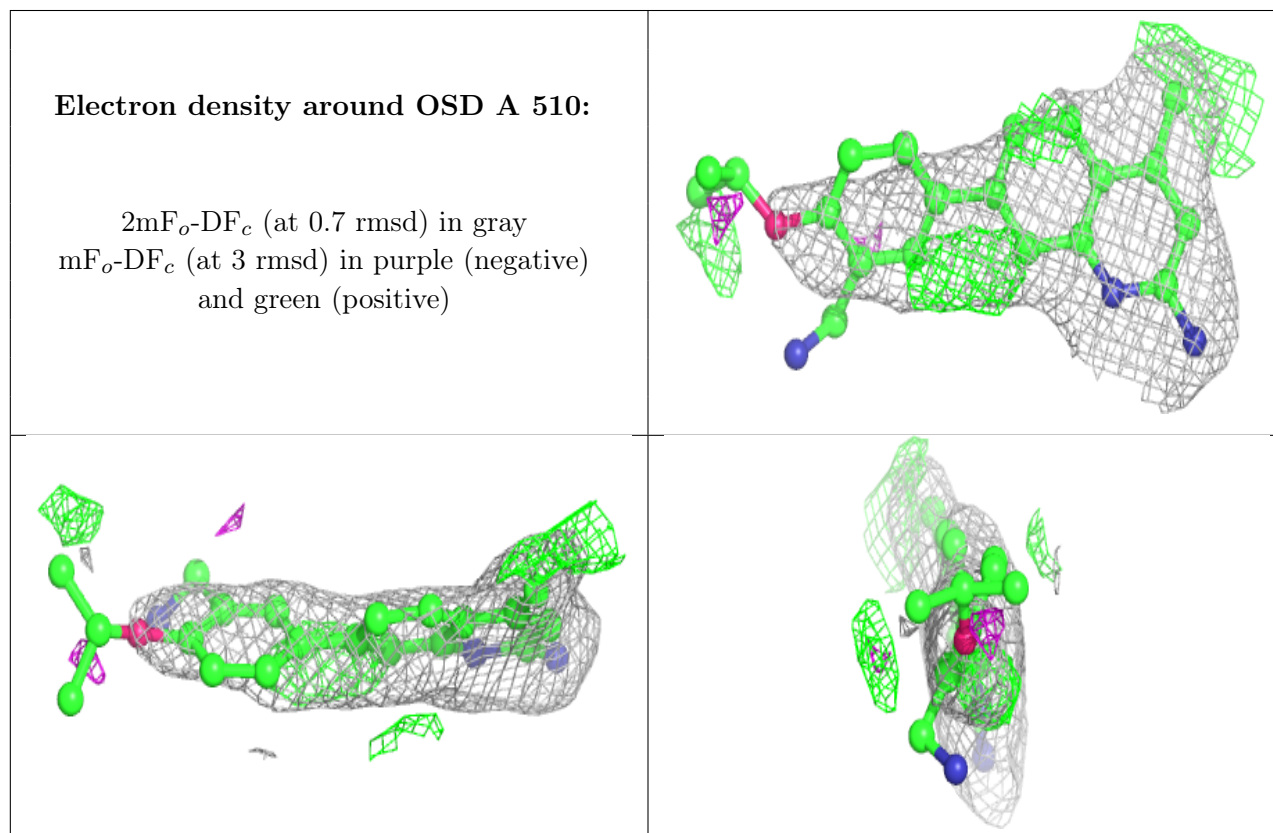
Mol	Type	Chain	Res	Atoms	RSCC	RSR	B-factors(Å ²)	Q<0.9
5	BTB	C	504	14/14	0.77	0.14	89,111,124,126	0
4	OSD	A	510	24/24	0.85	0.31	55,99,120,131	0
7	GOL	C	506	6/6	0.88	0.20	50,76,87,87	0
5	BTB	A	505	14/14	0.89	0.14	69,81,94,96	0
5	BTB	D	503	14/14	0.91	0.13	44,69,81,83	0
3	H4B	A	502	17/17	0.91	0.23	66,84,102,103	0
3	H4B	C	502	17/17	0.92	0.28	51,72,93,94	0
5	BTB	D	504	14/14	0.92	0.21	53,85,96,96	0
7	GOL	A	507	6/6	0.92	0.15	55,79,101,105	0
4	OSD	C	509	24/24	0.92	0.19	37,81,105,106	0
5	BTB	B	508	14/14	0.93	0.19	61,77,87,90	0
5	BTB	B	503	14/14	0.93	0.12	41,69,93,97	0
5	BTB	B	504	14/14	0.93	0.19	34,78,94,94	0
5	BTB	B	507	14/14	0.94	0.18	41,90,103,103	0
8	CL	A	508	1/1	0.94	0.09	64,64,64,64	0
8	CL	C	507	1/1	0.94	0.08	56,56,56,56	0
4	OSD	A	503	24/24	0.95	0.16	49,77,83,87	0

Continued on next page...

Continued from previous page...

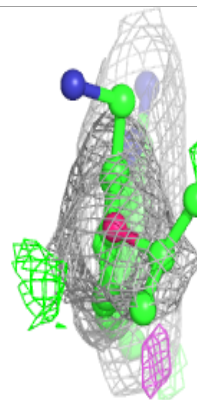
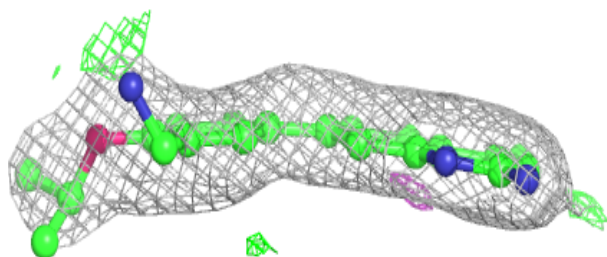
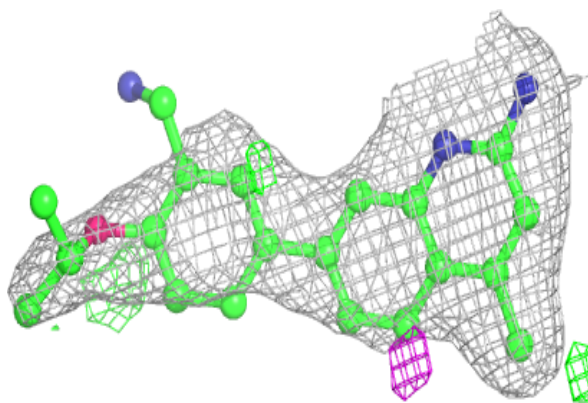
Mol	Type	Chain	Res	Atoms	RSCC	RSR	B-factors(Å ²)	Q<0.9
9	GD	A	509	1/1	0.95	0.17	104,104,104,104	0
5	BTB	A	504	14/14	0.96	0.15	63,85,96,98	0
8	CL	D	506	1/1	0.96	0.07	54,54,54,54	0
4	OSD	C	503	24/24	0.96	0.14	40,51,75,78	0
8	CL	B	505	1/1	0.97	0.08	58,58,58,58	0
4	OSD	B	502	24/24	0.97	0.12	28,44,78,81	0
2	HEM	A	501	43/43	0.98	0.14	35,62,94,110	0
2	HEM	B	501	43/43	0.98	0.13	27,39,77,89	0
2	HEM	C	501	43/43	0.98	0.14	37,50,77,95	0
4	OSD	D	502	24/24	0.98	0.12	28,41,76,87	0
2	HEM	D	501	43/43	0.98	0.15	27,39,62,86	0
9	GD	C	508	1/1	0.98	0.14	100,100,100,100	0
9	GD	B	506	1/1	0.99	0.18	54,54,54,54	0
9	GD	D	505	1/1	0.99	0.18	55,55,55,55	0
6	ZN	A	506	1/1	1.00	0.14	56,56,56,56	0
6	ZN	C	505	1/1	1.00	0.14	45,45,45,45	0

The following is a graphical depiction of the model fit to experimental electron density of all instances of the Ligand of Interest. In addition, ligands with molecular weight > 250 and outliers as shown on the geometry validation Tables will also be included. Each fit is shown from different orientation to approximate a three-dimensional view.

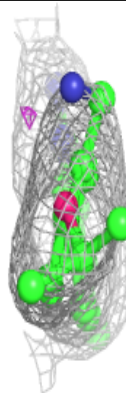
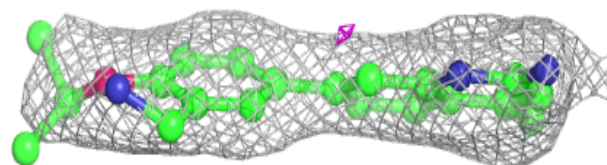
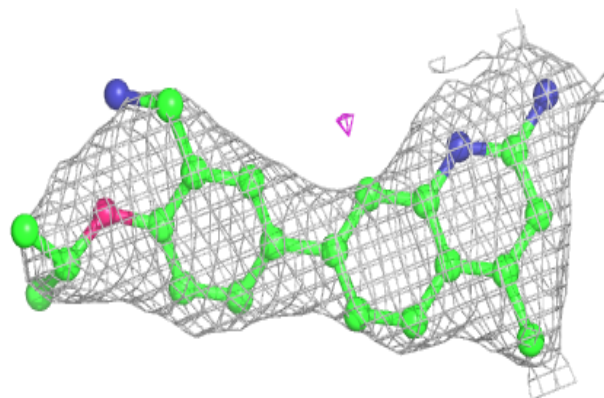


Electron density around OSD C 509:

$2mF_o-DF_c$ (at 0.7 rmsd) in gray
 mF_o-DF_c (at 3 rmsd) in purple (negative)
and green (positive)

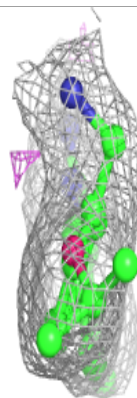
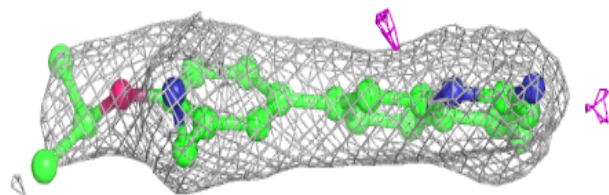
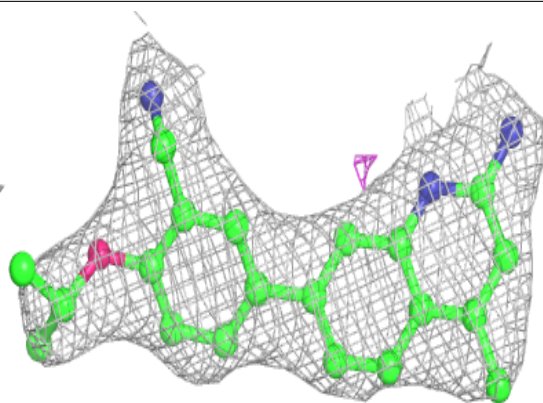
**Electron density around OSD A 503:**

$2mF_o-DF_c$ (at 0.7 rmsd) in gray
 mF_o-DF_c (at 3 rmsd) in purple (negative)
and green (positive)

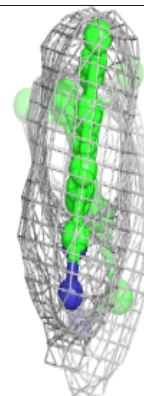
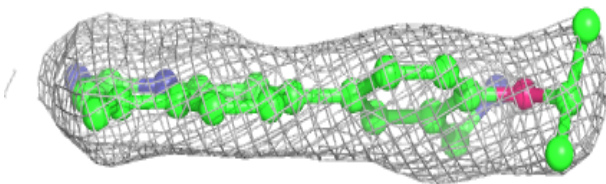
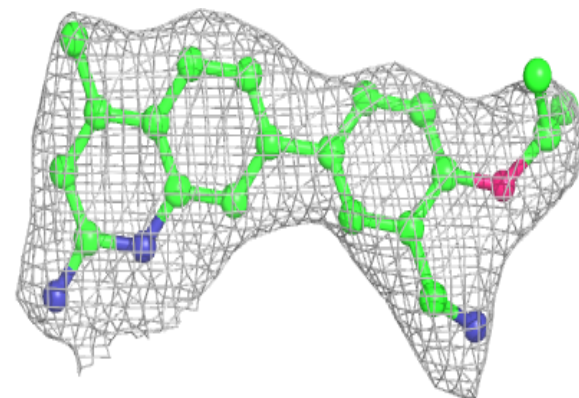


Electron density around OSD C 503:

$2mF_o-DF_c$ (at 0.7 rmsd) in gray
 mF_o-DF_c (at 3 rmsd) in purple (negative)
and green (positive)

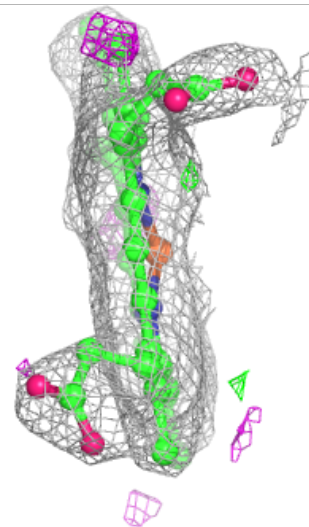
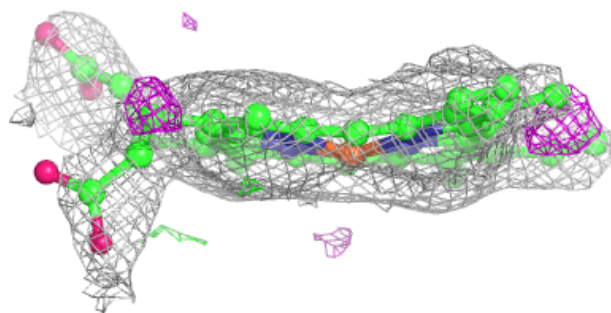
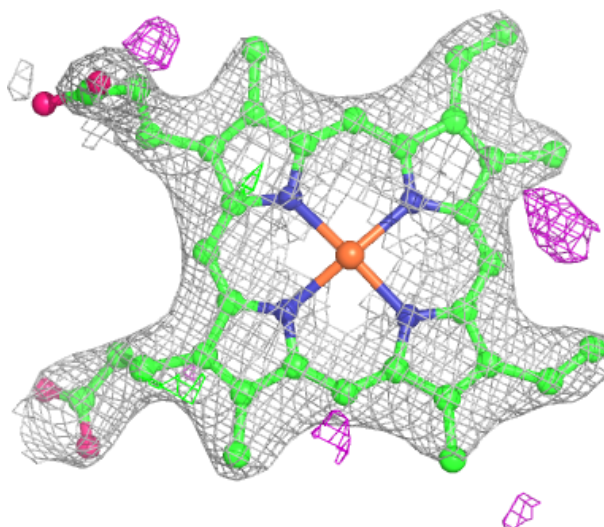
**Electron density around OSD B 502:**

$2mF_o-DF_c$ (at 0.7 rmsd) in gray
 mF_o-DF_c (at 3 rmsd) in purple (negative)
and green (positive)



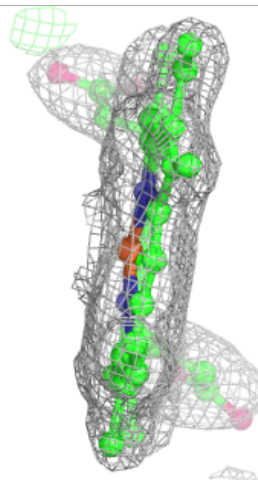
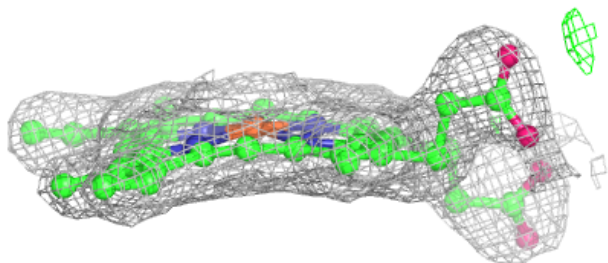
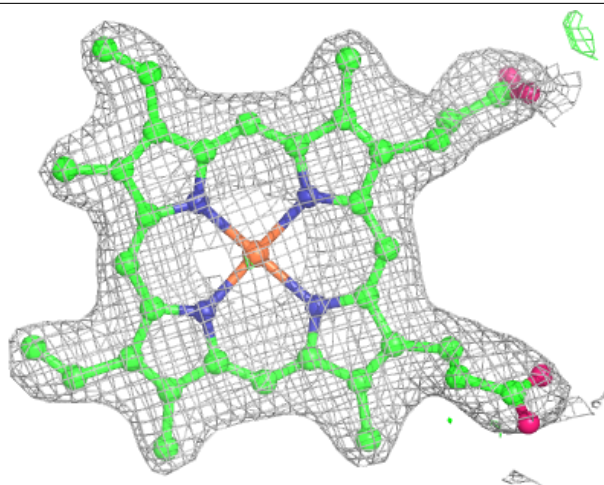
Electron density around HEM A 501:

$2mF_o-DF_c$ (at 0.7 rmsd) in gray
 mF_o-DF_c (at 3 rmsd) in purple (negative)
and green (positive)



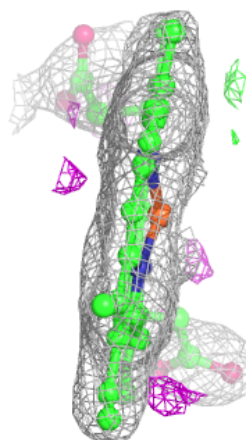
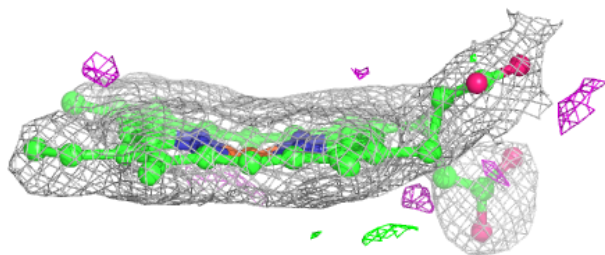
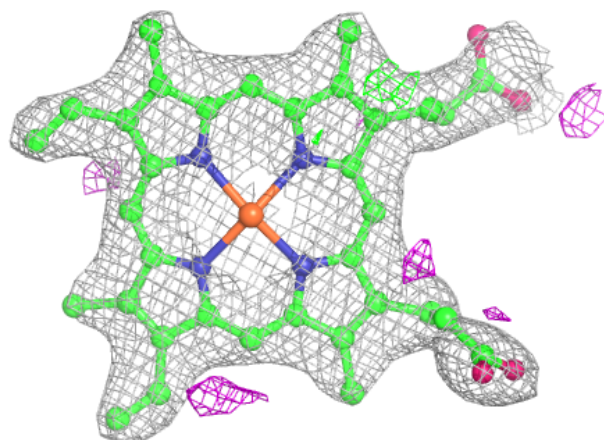
Electron density around HEM B 501:

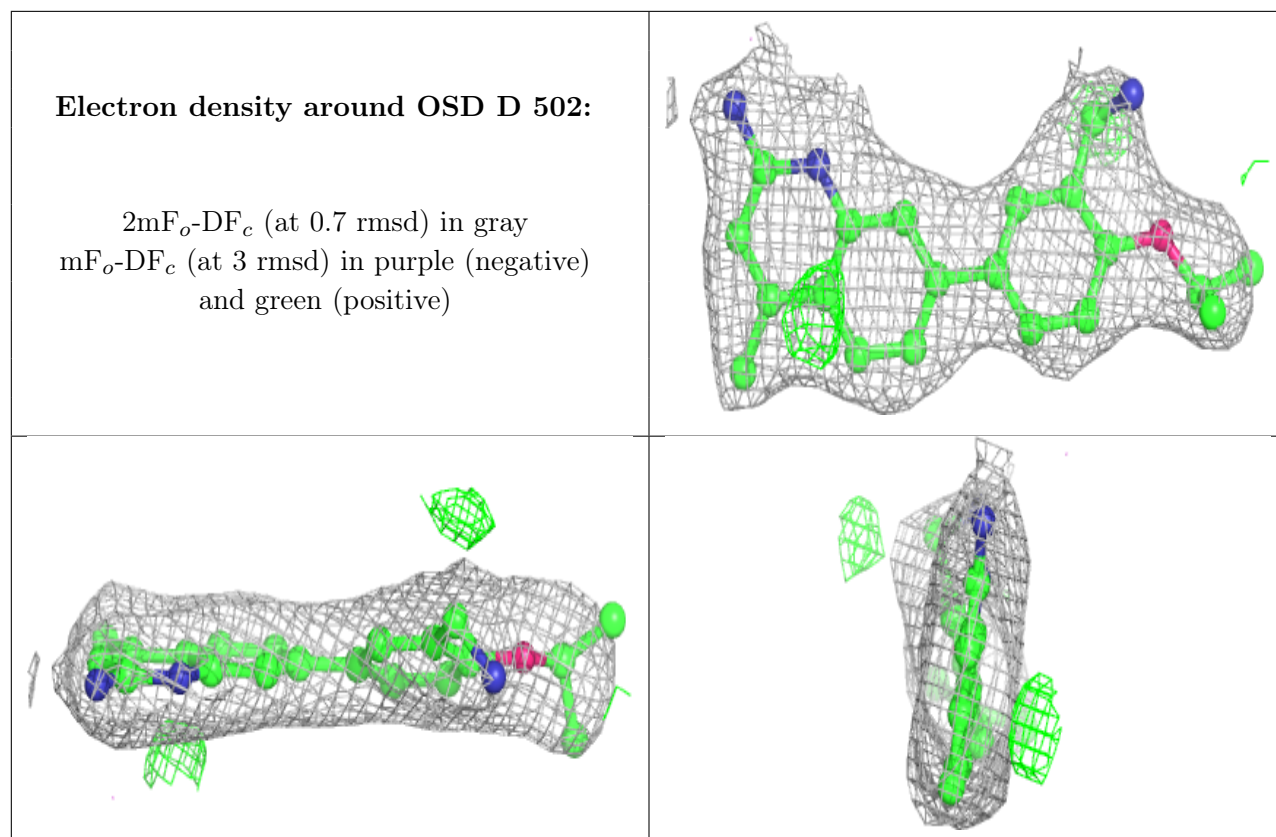
$2mF_o-DF_c$ (at 0.7 rmsd) in gray
 mF_o-DF_c (at 3 rmsd) in purple (negative)
and green (positive)

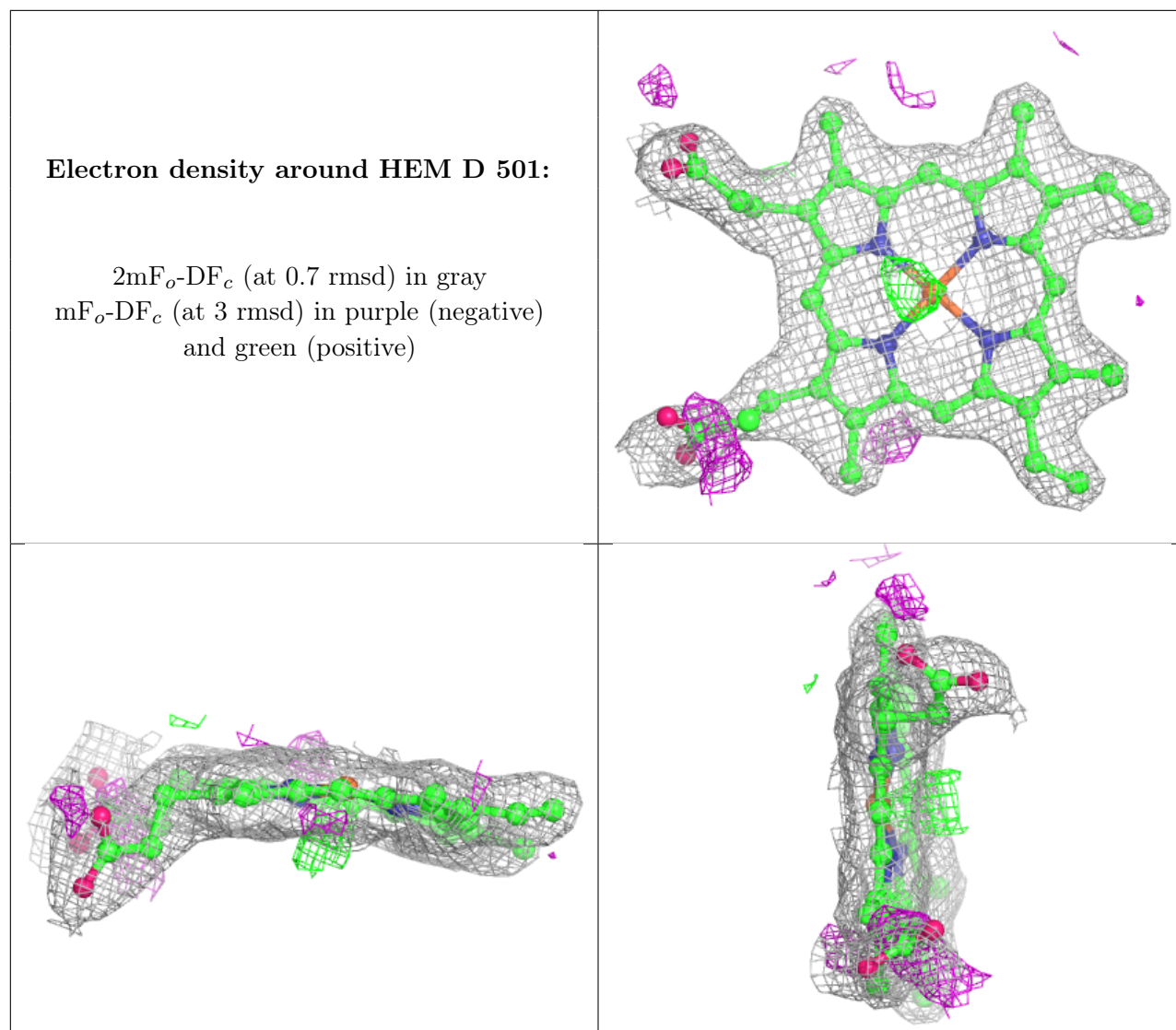


Electron density around HEM C 501:

$2mF_o-DF_c$ (at 0.7 rmsd) in gray
 mF_o-DF_c (at 3 rmsd) in purple (negative)
and green (positive)







6.5 Other polymers [i](#)

There are no such residues in this entry.