



Full wwPDB X-ray Structure Validation Report ⓘ

Oct 3, 2023 – 08:48 PM EDT

PDB ID : 6PO7
Title : Structure of human neuronal nitric oxide synthase R354A/G357D mutant heme domain in complex with 7-(3-(Aminomethyl)-4-(cyclopropylmethoxy)phenyl)-4-methylquinolin-2-amine
Authors : Li, H.; Poulos, T.L.
Deposited on : 2019-07-03
Resolution : 1.95 Å(reported)

This is a Full wwPDB X-ray Structure Validation Report for a publicly released PDB entry.

We welcome your comments at validation@mail.wwpdb.org

A user guide is available at

<https://www.wwpdb.org/validation/2017/XrayValidationReportHelp>

with specific help available everywhere you see the ⓘ symbol.

The types of validation reports are described at

<http://www.wwpdb.org/validation/2017/FAQs#types>.

The following versions of software and data (see [references ⓘ](#)) were used in the production of this report:

MolProbity : 4.02b-467
Mogul : 1.8.5 (274361), CSD as541be (2020)
Xtriage (Phenix) : 1.13
EDS : 2.35.1
buster-report : 1.1.7 (2018)
Percentile statistics : 20191225.v01 (using entries in the PDB archive December 25th 2019)
Refmac : 5.8.0158
CCP4 : 7.0.044 (Gargrove)
Ideal geometry (proteins) : Engh & Huber (2001)
Ideal geometry (DNA, RNA) : Parkinson et al. (1996)
Validation Pipeline (wwPDB-VP) : 2.35.1

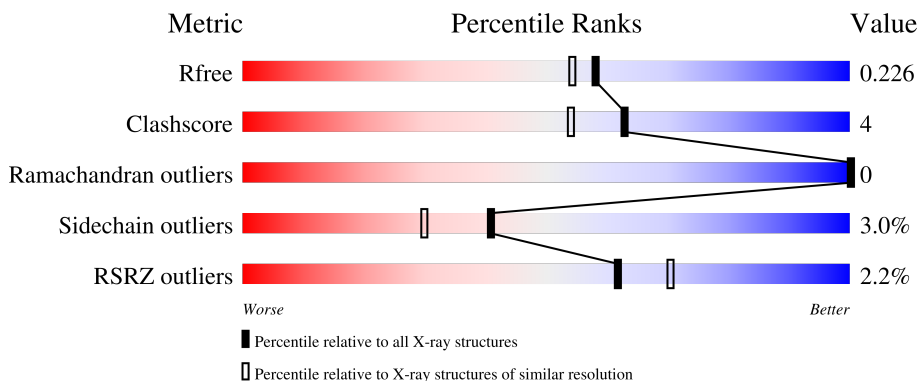
1 Overall quality at a glance

The following experimental techniques were used to determine the structure:

X-RAY DIFFRACTION

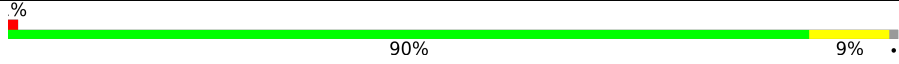
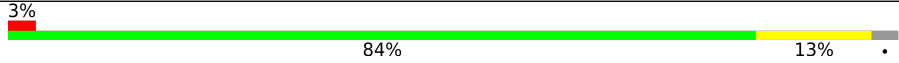
The reported resolution of this entry is 1.95 Å.

Percentile scores (ranging between 0-100) for global validation metrics of the entry are shown in the following graphic. The table shows the number of entries on which the scores are based.



Metric	Whole archive (#Entries)	Similar resolution (#Entries, resolution range(Å))
R_{free}	130704	2580 (1.96-1.96)
Clashscore	141614	2705 (1.96-1.96)
Ramachandran outliers	138981	2678 (1.96-1.96)
Sidechain outliers	138945	2678 (1.96-1.96)
RSRZ outliers	127900	2539 (1.96-1.96)

The table below summarises the geometric issues observed across the polymeric chains and their fit to the electron density. The red, orange, yellow and green segments of the lower bar indicate the fraction of residues that contain outliers for ≥ 3 , 2, 1 and 0 types of geometric quality criteria respectively. A grey segment represents the fraction of residues that are not modelled. The numeric value for each fraction is indicated below the corresponding segment, with a dot representing fractions $\leq 5\%$. The upper red bar (where present) indicates the fraction of residues that have poor fit to the electron density. The numeric value is given above the bar.

Mol	Chain	Length	Quality of chain
1	A	421	 90% 9%
1	B	421	 84% 13%

2 Entry composition [i](#)

There are 7 unique types of molecules in this entry. The entry contains 7686 atoms, of which 0 are hydrogens and 0 are deuteriums.

In the tables below, the ZeroOcc column contains the number of atoms modelled with zero occupancy, the AltConf column contains the number of residues with at least one atom in alternate conformation and the Trace column contains the number of residues modelled with at most 2 atoms.

- Molecule 1 is a protein called Nitric oxide synthase, brain.

Mol	Chain	Residues	Atoms					ZeroOcc	AltConf	Trace
			Total	C	N	O	S			
1	A	416	Total 3411	C 2184	N 580	O 624	S 23	0	5	0
1	B	410	Total 3487	C 2232	N 594	O 638	S 23	0	20	0

There are 4 discrepancies between the modelled and reference sequences:

Chain	Residue	Modelled	Actual	Comment	Reference
A	354	ALA	ARG	engineered mutation	UNP P29475
A	357	ASP	GLY	engineered mutation	UNP P29475
B	354	ALA	ARG	engineered mutation	UNP P29475
B	357	ASP	GLY	engineered mutation	UNP P29475

- Molecule 2 is PROTOPORPHYRIN IX CONTAINING FE (three-letter code: HEM) (formula: $C_{34}H_{32}FeN_4O_4$).



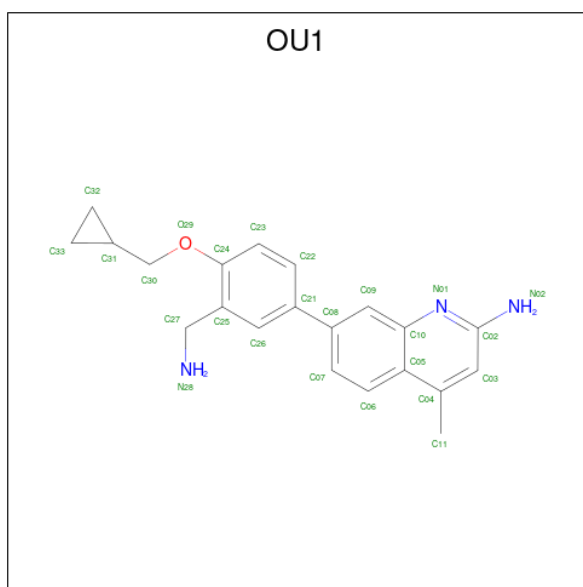
Mol	Chain	Residues	Atoms				ZeroOcc	AltConf	
2	A	1	Total	C	Fe	N	O	0	0
			43	34	1	4	4		
2	B	1	Total	C	Fe	N	O	0	0
			43	34	1	4	4		

- Molecule 3 is 5,6,7,8-TETRAHYDROBIOPTERIN (three-letter code: H4B) (formula: $C_9H_{15}N_5O_3$).



Mol	Chain	Residues	Atoms				ZeroOcc	AltConf
3	A	1	Total	C	N	O	0	0
			17	9	5	3		
3	B	1	Total	C	N	O	0	0
			17	9	5	3		

- Molecule 4 is 7-[3-(aminomethyl)-4-(cyclopropylmethoxy)phenyl]-4-methylquinolin-2-amine (three-letter code: OU1) (formula: $C_{21}H_{23}N_3O$) (labeled as "Ligand of Interest" by depositor).



Mol	Chain	Residues	Atoms			ZeroOcc	AltConf	
			Total	C	N			O
4	A	1	25	21	3	1	0	0
4	B	1	25	21	3	1	0	0

- Molecule 5 is GLYCEROL (three-letter code: GOL) (formula: $C_3H_8O_3$).



Mol	Chain	Residues	Atoms			ZeroOcc	AltConf
			Total	C	O		
5	A	1	6	3	3	0	0
5	A	1	6	3	3	0	0

Continued on next page...

Continued from previous page...

Mol	Chain	Residues	Atoms			ZeroOcc	AltConf
5	B	1	Total	C	O	0	0
			6	3	3		

- Molecule 6 is ZINC ION (three-letter code: ZN) (formula: Zn).

Mol	Chain	Residues	Atoms		ZeroOcc	AltConf
6	A	1	Total	Zn	0	0
			1	1		

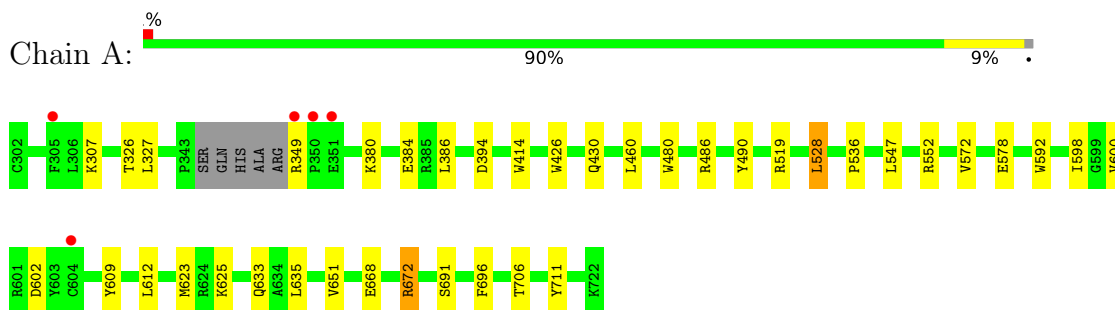
- Molecule 7 is water.

Mol	Chain	Residues	Atoms		ZeroOcc	AltConf
7	A	337	Total	O	0	0
			337	337		
7	B	262	Total	O	0	0
			262	262		

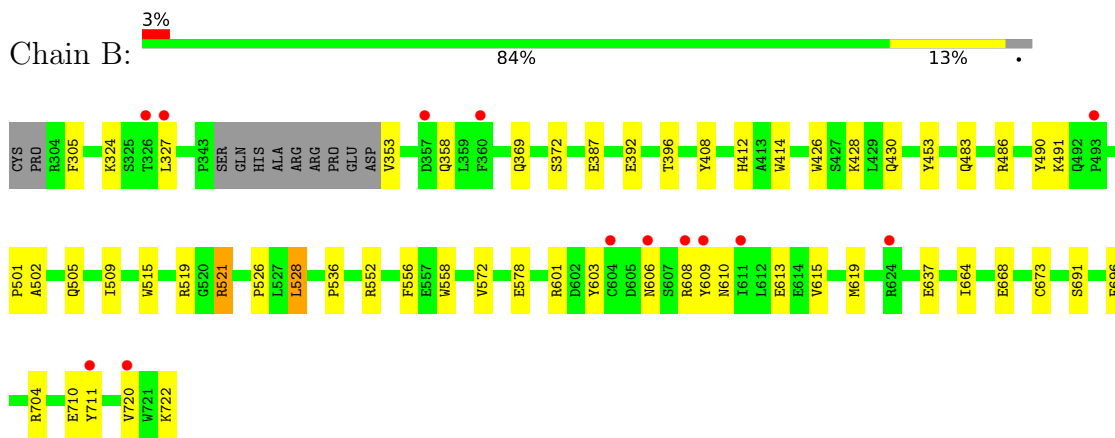
3 Residue-property plots [i](#)

These plots are drawn for all protein, RNA, DNA and oligosaccharide chains in the entry. The first graphic for a chain summarises the proportions of the various outlier classes displayed in the second graphic. The second graphic shows the sequence view annotated by issues in geometry and electron density. Residues are color-coded according to the number of geometric quality criteria for which they contain at least one outlier: green = 0, yellow = 1, orange = 2 and red = 3 or more. A red dot above a residue indicates a poor fit to the electron density ($RSRZ > 2$). Stretches of 2 or more consecutive residues without any outlier are shown as a green connector. Residues present in the sample, but not in the model, are shown in grey.

- Molecule 1: Nitric oxide synthase, brain



- Molecule 1: Nitric oxide synthase, brain



4 Data and refinement statistics

Property	Value	Source
Space group	P 21 21 21	Depositor
Cell constants a, b, c, α , β , γ	51.81Å 122.79Å 164.30Å 90.00° 90.00° 90.00°	Depositor
Resolution (Å)	82.15 – 1.95 98.36 – 1.95	Depositor EDS
% Data completeness (in resolution range)	91.7 (82.15-1.95) 95.8 (98.36-1.95)	Depositor EDS
R_{merge}	0.09	Depositor
R_{sym}	0.09	Depositor
$\langle I/\sigma(I) \rangle$ ¹	1.22 (at 1.95Å)	Xtrriage
Refinement program	PHENIX (1.11.1-2575_1496: ???)	Depositor
R, R_{free}	0.185 , 0.225 0.186 , 0.226	Depositor DCC
R_{free} test set	3670 reflections (4.95%)	wwPDB-VP
Wilson B-factor (Å ²)	35.7	Xtrriage
Anisotropy	0.440	Xtrriage
Bulk solvent k_{sol} (e/Å ³), B_{sol} (Å ²)	0.33 , 47.1	EDS
L-test for twinning ²	$\langle L \rangle = 0.48$, $\langle L^2 \rangle = 0.32$	Xtrriage
Estimated twinning fraction	No twinning to report.	Xtrriage
F_o, F_c correlation	0.97	EDS
Total number of atoms	7686	wwPDB-VP
Average B, all atoms (Å ²)	50.0	wwPDB-VP

Xtrriage's analysis on translational NCS is as follows: *The largest off-origin peak in the Patterson function is 3.80% of the height of the origin peak. No significant pseudotranslation is detected.*

¹Intensities estimated from amplitudes.

²Theoretical values of $\langle |L| \rangle$, $\langle L^2 \rangle$ for acentric reflections are 0.5, 0.333 respectively for untwinned datasets, and 0.375, 0.2 for perfectly twinned datasets.

5 Model quality

5.1 Standard geometry

Bond lengths and bond angles in the following residue types are not validated in this section: GOL, H4B, OU1, ZN, HEM

The Z score for a bond length (or angle) is the number of standard deviations the observed value is removed from the expected value. A bond length (or angle) with $|Z| > 5$ is considered an outlier worth inspection. RMSZ is the root-mean-square of all Z scores of the bond lengths (or angles).

Mol	Chain	Bond lengths		Bond angles	
		RMSZ	# Z >5	RMSZ	# Z >5
1	A	0.36	0/3523	0.53	0/4781
1	B	0.34	0/3599	0.50	0/4881
All	All	0.35	0/7122	0.51	0/9662

There are no bond length outliers.

There are no bond angle outliers.

There are no chirality outliers.

There are no planarity outliers.

5.2 Too-close contacts

In the following table, the Non-H and H(model) columns list the number of non-hydrogen atoms and hydrogen atoms in the chain respectively. The H(added) column lists the number of hydrogen atoms added and optimized by MolProbity. The Clashes column lists the number of clashes within the asymmetric unit, whereas Symm-Clashes lists symmetry-related clashes.

Mol	Chain	Non-H	H(model)	H(added)	Clashes	Symm-Clashes
1	A	3411	0	3326	24	0
1	B	3487	0	3400	30	0
2	A	43	0	30	5	0
2	B	43	0	30	3	0
3	A	17	0	15	0	0
3	B	17	0	15	0	0
4	A	25	0	0	1	0
4	B	25	0	0	2	0
5	A	12	0	16	1	0
5	B	6	0	8	2	0
6	A	1	0	0	0	0

Continued on next page...

Continued from previous page...

Mol	Chain	Non-H	H(model)	H(added)	Clashes	Symm-Clashes
7	A	337	0	0	3	0
7	B	262	0	0	4	0
All	All	7686	0	6840	60	0

The all-atom clashscore is defined as the number of clashes found per 1000 atoms (including hydrogen atoms). The all-atom clashscore for this structure is 4.

All (60) close contacts within the same asymmetric unit are listed below, sorted by their clash magnitude.

Atom-1	Atom-2	Interatomic distance (Å)	Clash overlap (Å)
1:A:528:LEU:HD22	1:A:536:PRO:HB2	1.62	0.81
1:B:528:LEU:HD22	1:B:536:PRO:HB2	1.65	0.78
2:B:801:HEM:HBB2	2:B:801:HEM:HHC	1.76	0.67
1:B:606[A]:ASN:HD21	1:B:609[A]:TYR:HB2	1.62	0.65
1:B:664:ILE:O	1:B:668[B]:GLU:HG2	1.96	0.65
1:B:610[A]:ASN:N	1:B:613:GLU:OE2	2.29	0.64
1:B:392:GLU:O	1:B:396:THR:OG1	2.15	0.64
5:B:804:GOL:O2	7:B:901:HOH:O	2.15	0.63
1:B:327:LEU:HD12	1:B:704:ARG:HG2	1.80	0.62
1:B:704:ARG:NH1	1:B:710:GLU:OE2	2.34	0.60
2:A:801:HEM:HMC2	2:A:801:HEM:HBC2	1.83	0.60
1:A:633:GLN:NE2	1:B:637:GLU:OE2	2.34	0.58
1:B:572:VAL:HG21	4:B:803:OU1:C07	2.35	0.56
1:A:572:VAL:HG21	4:A:803:OU1:C07	2.35	0.56
1:A:480:TRP:HB2	1:A:528:LEU:HB3	1.88	0.55
1:B:711:TYR:OH	2:B:801:HEM:O2D	2.12	0.55
1:A:711:TYR:OH	2:A:801:HEM:O2D	2.17	0.53
1:B:483:GLN:HB2	1:B:486:ARG:HG3	1.90	0.52
2:A:801:HEM:HBB2	2:A:801:HEM:HHC	1.91	0.52
2:A:801:HEM:HBD2	2:A:801:HEM:HMD2	1.92	0.52
1:A:430:GLN:HA	5:A:805:GOL:H11	1.91	0.51
1:A:460:LEU:HD12	1:A:592:TRP:HB3	1.92	0.51
2:B:801:HEM:HBD1	4:B:803:OU1:C22	2.39	0.51
1:B:515:TRP:CE2	1:B:526:PRO:HD3	2.47	0.49
1:B:501:PRO:HG2	1:B:608[B]:ARG:O	2.13	0.49
1:B:521:ARG:NH1	1:B:603[A]:TYR:HB3	2.27	0.49
1:B:673[A]:CYS:SG	5:B:804:GOL:H11	2.52	0.49
1:B:606[A]:ASN:ND2	1:B:609[A]:TYR:HB2	2.28	0.48
1:B:490:TYR:CE1	1:B:519:ARG:HA	2.49	0.47
1:A:598:ILE:HA	1:A:602:ASP:HB2	1.97	0.47
1:B:691:SER:HA	1:B:696:PHE:CG	2.49	0.47

Continued on next page...

Continued from previous page...

Atom-1	Atom-2	Interatomic distance (Å)	Clash overlap (Å)
1:A:326:THR:HG21	1:A:706[A]:THR:HG22	1.96	0.46
1:A:600:VAL:HG22	1:A:635:LEU:HD11	1.97	0.46
1:A:668:GLU:HB3	1:A:672:ARG:NH1	2.30	0.46
1:A:519:ARG:NH1	7:A:916:HOH:O	2.41	0.46
1:B:606[B]:ASN:ND2	7:B:916:HOH:O	2.49	0.46
1:B:505:GLN:O	1:B:509:ILE:HG13	2.16	0.46
1:B:491:LYS:HE2	1:B:491:LYS:HB3	1.62	0.45
1:A:380:LYS:NZ	1:A:384:GLU:OE2	2.45	0.45
1:B:615:VAL:O	1:B:619:MET:HG3	2.17	0.45
1:A:609:TYR:O	7:A:901:HOH:O	2.21	0.45
1:A:547:LEU:HD21	1:A:651:VAL:HG22	1.99	0.44
1:A:691:SER:HA	1:A:696:PHE:CG	2.53	0.44
1:B:502:ALA:HB2	1:B:608[B]:ARG:NE	2.33	0.44
1:B:408:TYR:CE1	1:B:412:HIS:CE1	3.06	0.43
2:A:801:HEM:HBD2	2:A:801:HEM:CMD	2.49	0.43
1:B:414:TRP:CE3	1:B:426:TRP:HA	2.54	0.43
1:A:623:MET:HB3	1:A:623:MET:HE2	1.70	0.43
1:B:556:PHE:HB3	1:B:558:TRP:CE2	2.53	0.43
1:A:414:TRP:CE3	1:A:426:TRP:HA	2.54	0.41
1:B:430:GLN:HG2	1:B:453:TYR:CE2	2.55	0.41
1:A:460:LEU:HD12	1:A:592:TRP:CB	2.51	0.41
1:A:490:TYR:CE1	1:A:519:ARG:HA	2.56	0.41
1:A:349:ARG:HE	1:A:349:ARG:HB3	1.52	0.41
1:A:668:GLU:HB3	1:A:672:ARG:HH12	1.85	0.41
1:B:606[B]:ASN:OD1	7:B:902:HOH:O	2.22	0.41
1:A:486:ARG:NE	7:A:929:HOH:O	2.53	0.41
1:B:601[B]:ARG:HG3	7:B:910:HOH:O	2.20	0.41
1:B:305:PHE:N	1:B:305:PHE:CD1	2.89	0.40
1:A:612:LEU:HD23	1:A:612:LEU:HA	1.92	0.40

There are no symmetry-related clashes.

5.3 Torsion angles [i](#)

5.3.1 Protein backbone [i](#)

In the following table, the Percentiles column shows the percent Ramachandran outliers of the chain as a percentile score with respect to all X-ray entries followed by that with respect to entries of similar resolution.

The Analysed column shows the number of residues for which the backbone conformation was analysed, and the total number of residues.

Mol	Chain	Analysed	Favoured	Allowed	Outliers	Percentiles	
1	A	417/421 (99%)	407 (98%)	10 (2%)	0	100	100
1	B	426/421 (101%)	412 (97%)	14 (3%)	0	100	100
All	All	843/842 (100%)	819 (97%)	24 (3%)	0	100	100

There are no Ramachandran outliers to report.

5.3.2 Protein sidechains [i](#)

In the following table, the Percentiles column shows the percent sidechain outliers of the chain as a percentile score with respect to all X-ray entries followed by that with respect to entries of similar resolution.

The Analysed column shows the number of residues for which the sidechain conformation was analysed, and the total number of residues.

Mol	Chain	Analysed	Rotameric	Outliers	Percentiles	
1	A	377/376 (100%)	368 (98%)	9 (2%)	49	40
1	B	385/376 (102%)	372 (97%)	13 (3%)	37	25
All	All	762/752 (101%)	740 (97%)	22 (3%)	41	31

All (22) residues with a non-rotameric sidechain are listed below:

Mol	Chain	Res	Type
1	A	307	LYS
1	A	327	LEU
1	A	386	LEU
1	A	394	ASP
1	A	528	LEU
1	A	552	ARG
1	A	578	GLU
1	A	625	LYS
1	A	672	ARG
1	B	324	LYS
1	B	353	VAL
1	B	358	GLN
1	B	369	GLN
1	B	372	SER
1	B	387	GLU
1	B	428	LYS
1	B	521	ARG
1	B	528	LEU

Continued on next page...

Continued from previous page...

Mol	Chain	Res	Type
1	B	552	ARG
1	B	578	GLU
1	B	720	VAL
1	B	722	LYS

Sometimes sidechains can be flipped to improve hydrogen bonding and reduce clashes. All (2) such sidechains are listed below:

Mol	Chain	Res	Type
1	B	369	GLN
1	B	633	GLN

5.3.3 RNA [i](#)

There are no RNA molecules in this entry.

5.4 Non-standard residues in protein, DNA, RNA chains [i](#)

There are no non-standard protein/DNA/RNA residues in this entry.

5.5 Carbohydrates [i](#)

There are no monosaccharides in this entry.

5.6 Ligand geometry [i](#)

Of 10 ligands modelled in this entry, 1 is monoatomic - leaving 9 for Mogul analysis.

In the following table, the Counts columns list the number of bonds (or angles) for which Mogul statistics could be retrieved, the number of bonds (or angles) that are observed in the model and the number of bonds (or angles) that are defined in the Chemical Component Dictionary. The Link column lists molecule types, if any, to which the group is linked. The Z score for a bond length (or angle) is the number of standard deviations the observed value is removed from the expected value. A bond length (or angle) with $|Z| > 2$ is considered an outlier worth inspection. RMSZ is the root-mean-square of all Z scores of the bond lengths (or angles).

Mol	Type	Chain	Res	Link	Bond lengths			Bond angles		
					Counts	RMSZ	# Z > 2	Counts	RMSZ	# Z > 2
3	H4B	B	802	-	16,18,18	0.85	0	11,26,26	2.65	6 (54%)
4	OU1	A	803	-	28,28,28	0.95	1 (3%)	39,40,40	1.59	8 (20%)

Mol	Type	Chain	Res	Link	Bond lengths			Bond angles		
					Counts	RMSZ	# Z > 2	Counts	RMSZ	# Z > 2
4	OU1	B	803	-	28,28,28	0.99	2 (7%)	39,40,40	1.61	9 (23%)
5	GOL	A	805	-	5,5,5	0.35	0	5,5,5	0.66	0
2	HEM	B	801	1	41,50,50	1.54	6 (14%)	45,82,82	1.77	10 (22%)
3	H4B	A	802	-	16,18,18	0.79	0	11,26,26	2.47	6 (54%)
5	GOL	B	804	-	5,5,5	0.40	0	5,5,5	0.14	0
2	HEM	A	801	1	41,50,50	1.41	4 (9%)	45,82,82	1.57	9 (20%)
5	GOL	A	804	-	5,5,5	0.36	0	5,5,5	0.30	0

In the following table, the Chirals column lists the number of chiral outliers, the number of chiral centers analysed, the number of these observed in the model and the number defined in the Chemical Component Dictionary. Similar counts are reported in the Torsion and Rings columns. '-' means no outliers of that kind were identified.

Mol	Type	Chain	Res	Link	Chirals	Torsions	Rings
3	H4B	B	802	-	-	3/8/17/17	0/2/2/2
4	OU1	A	803	-	-	3/11/13/13	0/4/4/4
4	OU1	B	803	-	-	4/11/13/13	0/4/4/4
5	GOL	A	805	-	-	0/4/4/4	-
2	HEM	B	801	1	-	4/12/54/54	-
3	H4B	A	802	-	-	0/8/17/17	0/2/2/2
5	GOL	B	804	-	-	4/4/4/4	-
2	HEM	A	801	1	-	4/12/54/54	-
5	GOL	A	804	-	-	3/4/4/4	-

All (13) bond length outliers are listed below:

Mol	Chain	Res	Type	Atoms	Z	Observed(Å)	Ideal(Å)
2	B	801	HEM	C3C-C2C	-4.04	1.34	1.40
2	A	801	HEM	C3C-C2C	-3.76	1.35	1.40
2	B	801	HEM	C3C-CAC	3.70	1.55	1.47
2	A	801	HEM	C3C-CAC	3.21	1.54	1.47
2	A	801	HEM	CAB-C3B	3.07	1.55	1.47
2	B	801	HEM	CAB-C3B	2.96	1.55	1.47
4	A	803	OU1	C02-N01	2.57	1.36	1.33
2	B	801	HEM	CMD-C2D	2.45	1.56	1.50
2	B	801	HEM	FE-NB	2.30	2.08	1.96
4	B	803	OU1	C05-C10	-2.09	1.39	1.42
2	A	801	HEM	CMB-C2B	2.09	1.55	1.50
4	B	803	OU1	C04-C05	-2.05	1.38	1.42
2	B	801	HEM	CMB-C2B	2.02	1.55	1.50

All (48) bond angle outliers are listed below:

Mol	Chain	Res	Type	Atoms	Z	Observed(°)	Ideal(°)
2	B	801	HEM	CBA-CAA-C2A	-5.22	103.72	112.62
2	A	801	HEM	CBA-CAA-C2A	-5.15	103.83	112.62
3	A	802	H4B	C8A-C4A-C4	5.03	119.04	114.57
3	B	802	H4B	C8A-C4A-C4	4.95	118.97	114.57
2	B	801	HEM	C4B-CHC-C1C	4.77	128.86	122.56
4	B	803	OU1	C04-C05-C10	3.99	120.17	118.01
4	B	803	OU1	C05-C10-N01	-3.75	118.83	122.81
4	A	803	OU1	C04-C05-C10	3.65	119.98	118.01
3	B	802	H4B	C4-C4A-N5	3.57	122.12	119.12
4	B	803	OU1	C26-C21-C08	-3.42	115.20	120.86
4	A	803	OU1	C26-C21-C08	-3.25	115.49	120.86
4	A	803	OU1	C05-C10-N01	-3.23	119.39	122.81
3	B	802	H4B	N1-C2-N3	-3.22	120.37	125.42
3	B	802	H4B	C2-N3-C4	3.14	120.92	115.93
3	A	802	H4B	C2-N3-C4	2.98	120.67	115.93
2	B	801	HEM	CAD-CBD-CGD	-2.96	107.22	113.60
3	A	802	H4B	N1-C2-N3	-2.94	120.80	125.42
2	B	801	HEM	C4D-ND-C1D	2.89	108.06	105.07
4	B	803	OU1	C30-O29-C24	2.74	124.36	118.27
3	B	802	H4B	C2-N1-C8A	2.64	120.46	114.54
3	A	802	H4B	C4-C4A-N5	2.59	121.29	119.12
4	A	803	OU1	C30-O29-C24	2.54	123.91	118.27
2	A	801	HEM	CMC-C2C-C3C	2.51	129.38	124.68
3	A	802	H4B	C2-N1-C8A	2.49	120.11	114.54
2	B	801	HEM	C3D-C4D-ND	-2.48	107.41	110.17
2	A	801	HEM	CAD-C3D-C4D	-2.46	120.36	124.66
2	B	801	HEM	CMA-C3A-C4A	-2.45	124.69	128.46
3	B	802	H4B	N2-C2-N3	2.43	121.04	117.25
2	A	801	HEM	C4B-CHC-C1C	2.43	125.77	122.56
4	A	803	OU1	C06-C05-C04	-2.41	119.06	123.66
2	A	801	HEM	CHB-C1B-NB	2.35	127.28	124.38
4	A	803	OU1	C06-C05-C10	2.34	120.95	118.33
2	B	801	HEM	C3B-C2B-C1B	2.32	108.21	106.49
2	B	801	HEM	CHD-C1D-ND	2.31	126.94	124.43
4	B	803	OU1	C07-C08-C21	-2.30	117.37	121.36
4	B	803	OU1	C03-C04-C05	2.28	120.03	117.78
4	A	803	OU1	C32-C31-C30	-2.21	107.39	119.43
4	A	803	OU1	N02-C02-N01	2.16	120.04	118.26
2	A	801	HEM	C3B-C2B-C1B	2.15	108.08	106.49
2	A	801	HEM	C4D-ND-C1D	2.15	107.29	105.07
3	A	802	H4B	N2-C2-N3	2.13	120.57	117.25
4	B	803	OU1	C06-C05-C04	-2.13	119.59	123.66

Continued on next page...

Continued from previous page...

Mol	Chain	Res	Type	Atoms	Z	Observed(°)	Ideal(°)
2	A	801	HEM	CHA-C4D-ND	2.12	127.00	124.38
2	B	801	HEM	C1B-NB-C4B	2.10	107.25	105.07
2	B	801	HEM	CHA-C4D-ND	2.08	126.95	124.38
4	B	803	OU1	C08-C09-C10	-2.08	119.62	121.44
2	A	801	HEM	CAD-C3D-C2D	2.07	131.74	127.88
4	B	803	OU1	C22-C21-C08	2.04	124.88	121.36

There are no chirality outliers.

All (25) torsion outliers are listed below:

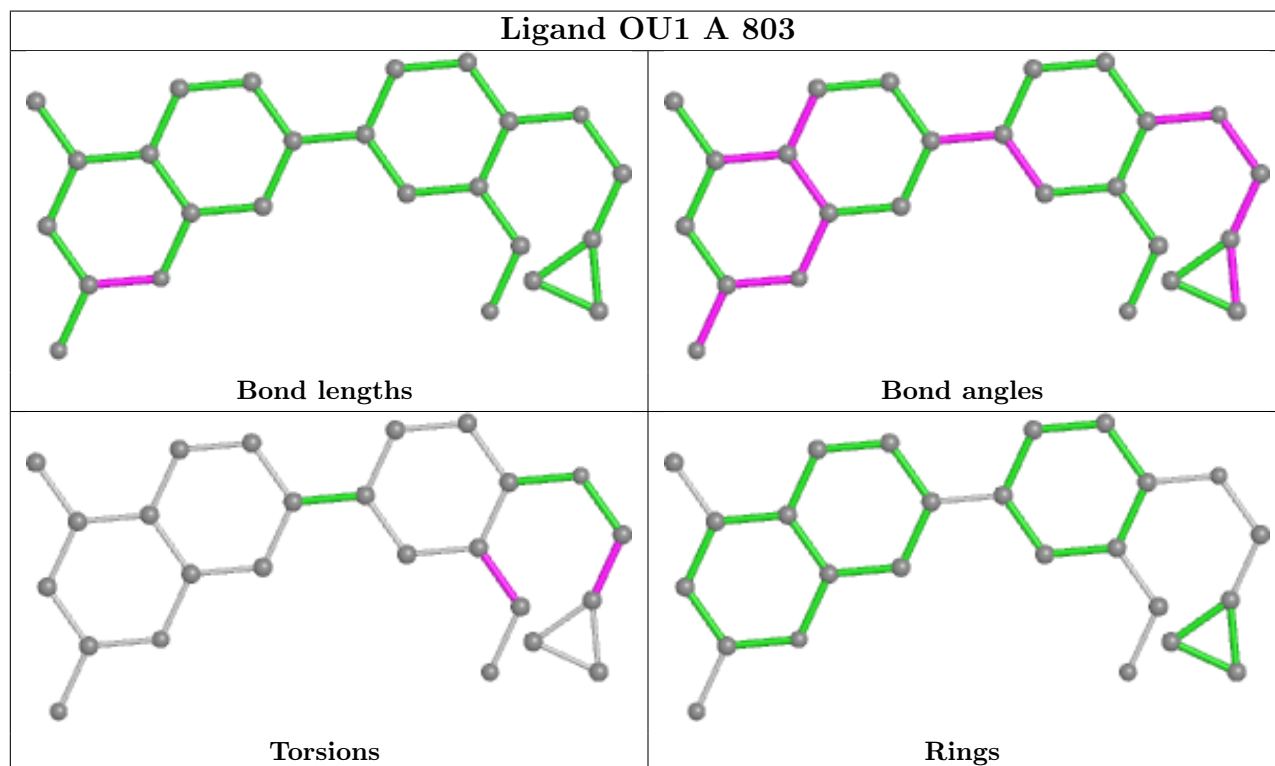
Mol	Chain	Res	Type	Atoms
2	A	801	HEM	C2D-C3D-CAD-CBD
3	B	802	H4B	C7-C6-C9-O9
3	B	802	H4B	C7-C6-C9-C10
4	A	803	OU1	O29-C30-C31-C33
4	B	803	OU1	O29-C30-C31-C33
5	A	804	GOL	O1-C1-C2-O2
5	A	804	GOL	O1-C1-C2-C3
5	B	804	GOL	O1-C1-C2-C3
2	A	801	HEM	C4D-C3D-CAD-CBD
2	B	801	HEM	C2D-C3D-CAD-CBD
4	A	803	OU1	C24-C25-C27-N28
5	B	804	GOL	O1-C1-C2-O2
5	B	804	GOL	O2-C2-C3-O3
2	B	801	HEM	C4D-C3D-CAD-CBD
5	B	804	GOL	C1-C2-C3-O3
4	B	803	OU1	C24-C25-C27-N28
4	A	803	OU1	O29-C30-C31-C32
4	B	803	OU1	O29-C30-C31-C32
5	A	804	GOL	O2-C2-C3-O3
2	B	801	HEM	CAD-CBD-CGD-O2D
2	B	801	HEM	CAD-CBD-CGD-O1D
2	A	801	HEM	CAD-CBD-CGD-O1D
2	A	801	HEM	CAD-CBD-CGD-O2D
3	B	802	H4B	N5-C6-C9-O9
4	B	803	OU1	C23-C24-O29-C30

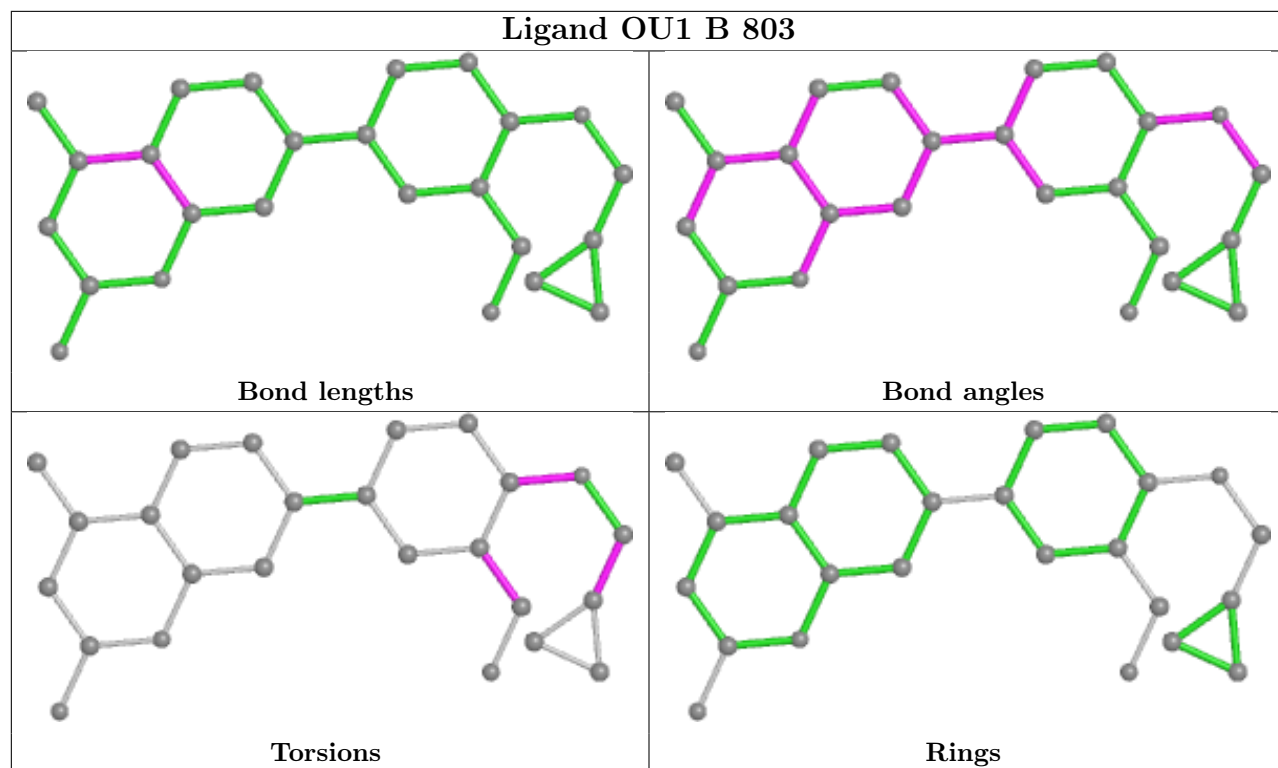
There are no ring outliers.

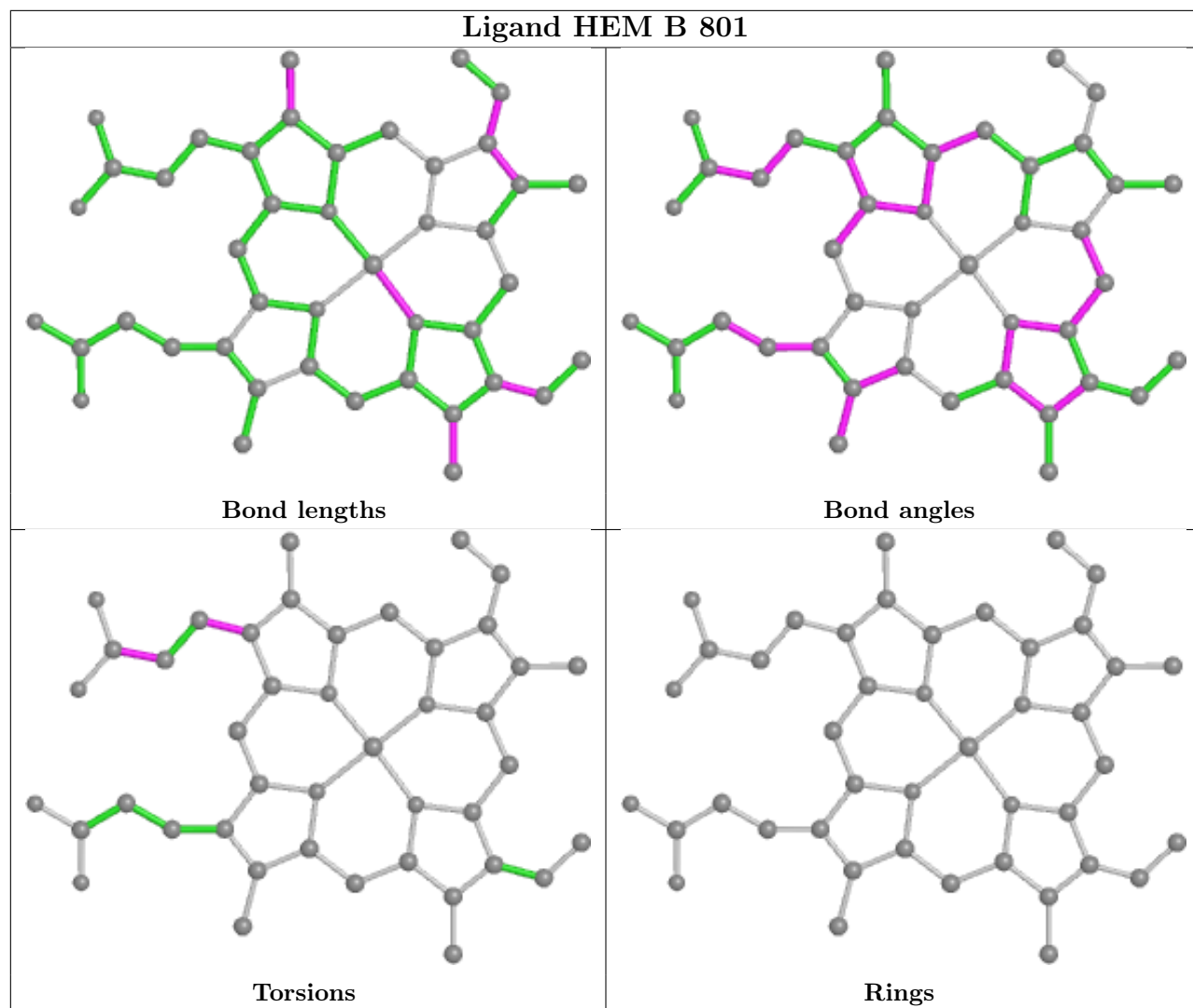
6 monomers are involved in 13 short contacts:

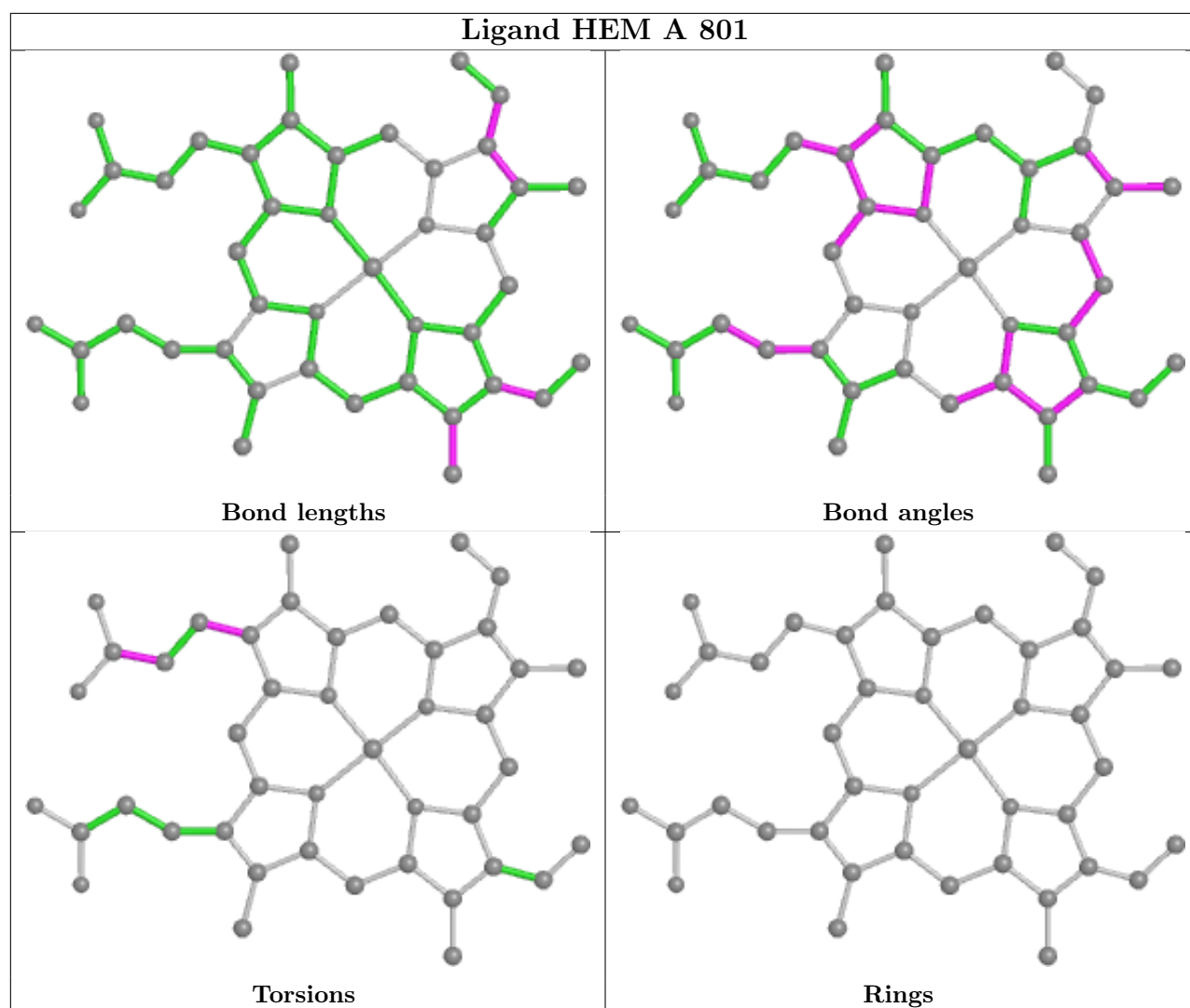
Mol	Chain	Res	Type	Clashes	Symm-Clashes
4	A	803	OU1	1	0
4	B	803	OU1	2	0
5	A	805	GOL	1	0
2	B	801	HEM	3	0
5	B	804	GOL	2	0
2	A	801	HEM	5	0

The following is a two-dimensional graphical depiction of Mogul quality analysis of bond lengths, bond angles, torsion angles, and ring geometry for all instances of the Ligand of Interest. In addition, ligands with molecular weight > 250 and outliers as shown on the validation Tables will also be included. For torsion angles, if less than 5% of the Mogul distribution of torsion angles is within 10 degrees of the torsion angle in question, then that torsion angle is considered an outlier. Any bond that is central to one or more torsion angles identified as an outlier by Mogul will be highlighted in the graph. For rings, the root-mean-square deviation (RMSD) between the ring in question and similar rings identified by Mogul is calculated over all ring torsion angles. If the average RMSD is greater than 60 degrees and the minimal RMSD between the ring in question and any Mogul-identified rings is also greater than 60 degrees, then that ring is considered an outlier. The outliers are highlighted in purple. The color gray indicates Mogul did not find sufficient equivalents in the CSD to analyse the geometry.









5.7 Other polymers [i](#)

There are no such residues in this entry.

5.8 Polymer linkage issues [i](#)

There are no chain breaks in this entry.

6 Fit of model and data [i](#)

6.1 Protein, DNA and RNA chains [i](#)

In the following table, the column labelled ‘#RSRZ > 2’ contains the number (and percentage) of RSRZ outliers, followed by percent RSRZ outliers for the chain as percentile scores relative to all X-ray entries and entries of similar resolution. The OWAB column contains the minimum, median, 95th percentile and maximum values of the occupancy-weighted average B-factor per residue. The column labelled ‘Q < 0.9’ lists the number of (and percentage) of residues with an average occupancy less than 0.9.

Mol	Chain	Analysed	<RSRZ>	#RSRZ>2	OWAB(Å ²)	Q<0.9
1	A	416/421 (98%)	-0.10	5 (1%) 79 84	27, 42, 75, 134	0
1	B	410/421 (97%)	0.01	13 (3%) 47 57	29, 49, 95, 125	0
All	All	826/842 (98%)	-0.04	18 (2%) 62 70	27, 45, 87, 134	0

All (18) RSRZ outliers are listed below:

Mol	Chain	Res	Type	RSRZ
1	B	327	LEU	4.7
1	A	351	GLU	4.1
1	A	350	PRO	4.0
1	B	357	ASP	3.8
1	B	608[A]	ARG	3.1
1	B	611[A]	ILE	2.4
1	B	326	THR	2.4
1	B	711	TYR	2.3
1	B	720	VAL	2.2
1	B	360	PHE	2.1
1	B	624	ARG	2.1
1	A	604	CYS	2.1
1	A	349	ARG	2.1
1	A	305	PHE	2.1
1	B	609[A]	TYR	2.0
1	B	493	PRO	2.0
1	B	604[A]	CYS	2.0
1	B	606[A]	ASN	2.0

6.2 Non-standard residues in protein, DNA, RNA chains [i](#)

There are no non-standard protein/DNA/RNA residues in this entry.

6.3 Carbohydrates [i](#)

There are no monosaccharides in this entry.

6.4 Ligands [i](#)

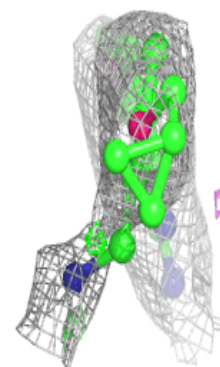
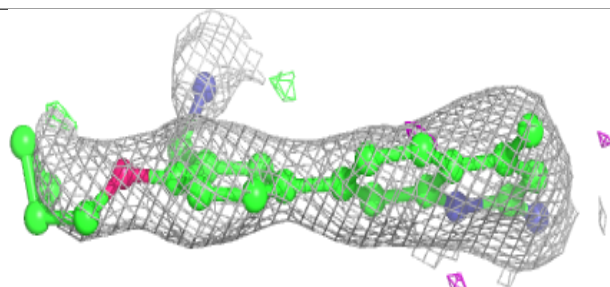
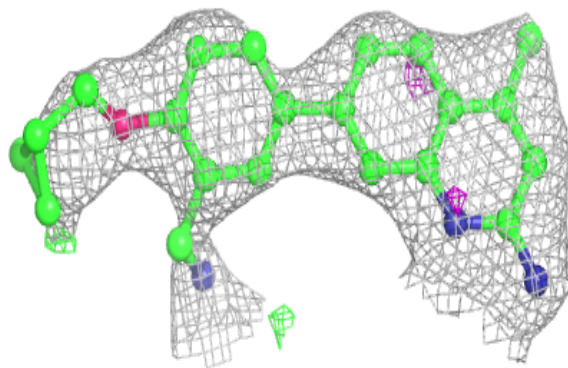
In the following table, the Atoms column lists the number of modelled atoms in the group and the number defined in the chemical component dictionary. The B-factors column lists the minimum, median, 95th percentile and maximum values of B factors of atoms in the group. The column labelled 'Q< 0.9' lists the number of atoms with occupancy less than 0.9.

Mol	Type	Chain	Res	Atoms	RSCC	RSR	B-factors(Å ²)	Q<0.9
5	GOL	B	804	6/6	0.70	0.33	75,85,87,88	0
5	GOL	A	804	6/6	0.88	0.18	61,68,70,73	0
3	H4B	B	802	17/17	0.90	0.17	36,55,68,70	0
5	GOL	A	805	6/6	0.92	0.21	41,63,69,71	0
4	OU1	B	803	25/25	0.94	0.19	27,52,109,110	0
4	OU1	A	803	25/25	0.94	0.15	28,54,92,103	0
3	H4B	A	802	17/17	0.96	0.13	33,47,57,59	0
2	HEM	B	801	43/43	0.98	0.11	27,36,56,58	0
2	HEM	A	801	43/43	0.98	0.11	22,32,56,63	0
6	ZN	A	806	1/1	1.00	0.11	39,39,39,39	0

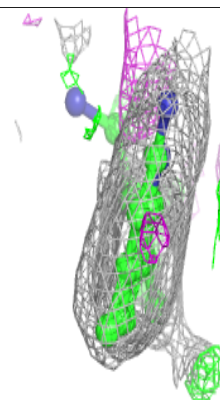
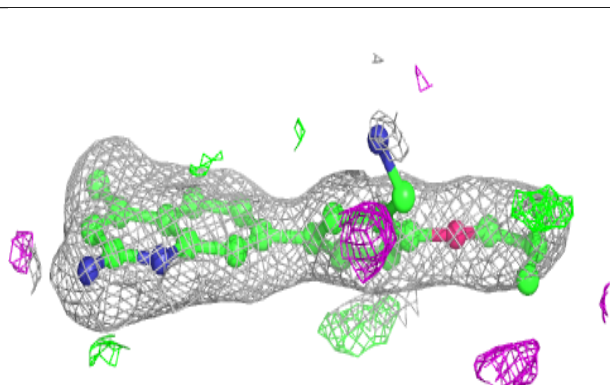
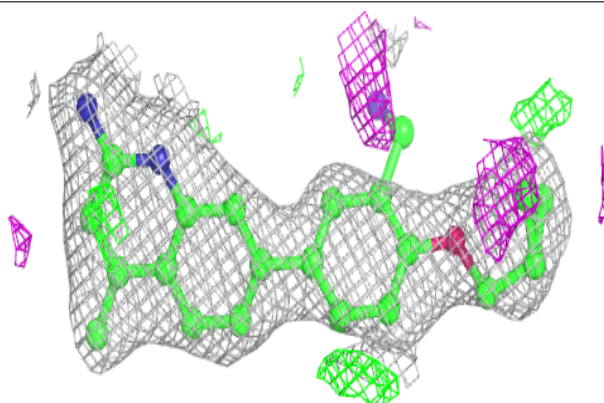
The following is a graphical depiction of the model fit to experimental electron density of all instances of the Ligand of Interest. In addition, ligands with molecular weight > 250 and outliers as shown on the geometry validation Tables will also be included. Each fit is shown from different orientation to approximate a three-dimensional view.

Electron density around OU1 B 803:

$2mF_o-DF_c$ (at 0.7 rmsd) in gray
 mF_o-DF_c (at 3 rmsd) in purple (negative)
and green (positive)

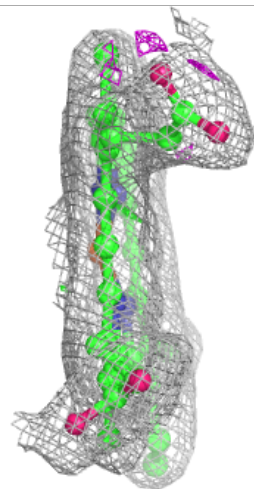
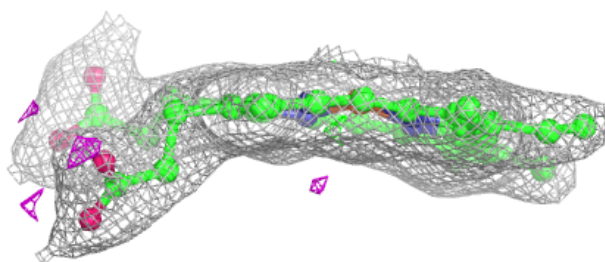
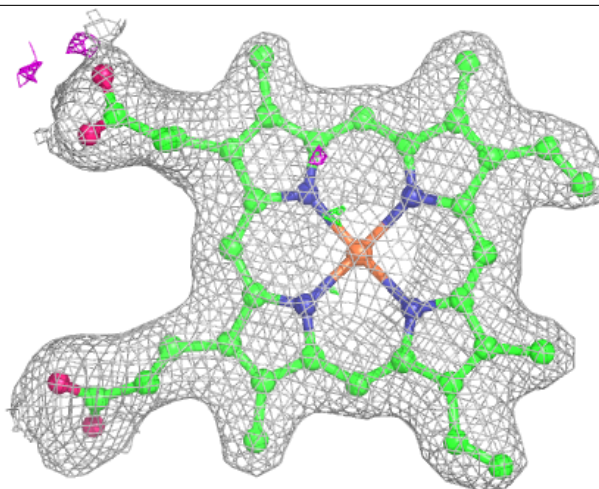
**Electron density around OU1 A 803:**

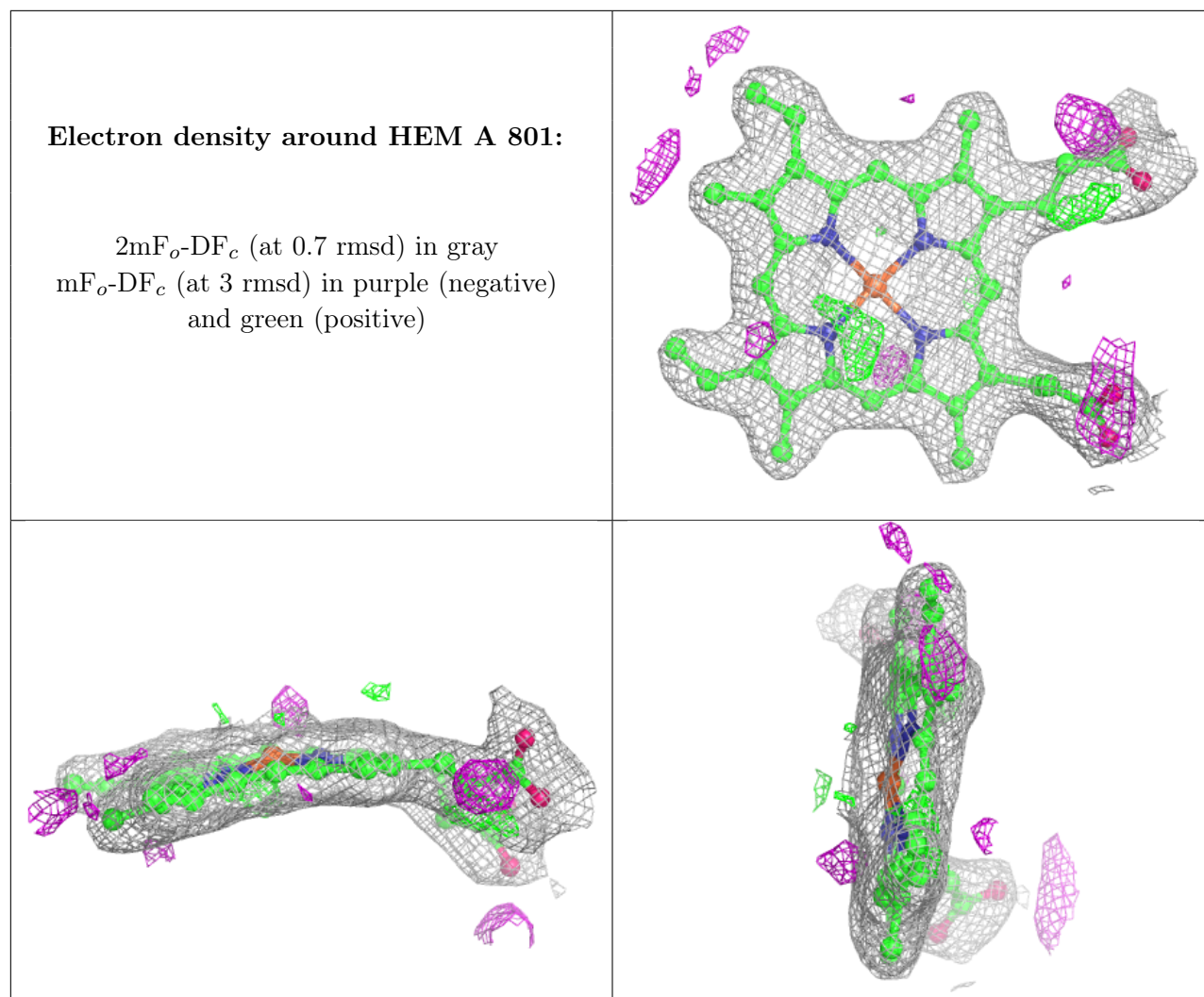
$2mF_o-DF_c$ (at 0.7 rmsd) in gray
 mF_o-DF_c (at 3 rmsd) in purple (negative)
and green (positive)



Electron density around HEM B 801:

$2mF_o-DF_c$ (at 0.7 rmsd) in gray
 mF_o-DF_c (at 3 rmsd) in purple (negative)
and green (positive)





6.5 Other polymers [i](#)

There are no such residues in this entry.