



Full wwPDB X-ray Structure Validation Report ⓘ

Sep 16, 2023 – 11:21 PM EDT

PDB ID : 4PGL
Title : Crystal structure of engineered D-tagatose 3-epimerase PcDTE-ILS6
Authors : Hee, C.S.; Bosshart, A.; Schirmer, T.
Deposited on : 2014-05-02
Resolution : 2.10 Å(reported)

This is a Full wwPDB X-ray Structure Validation Report for a publicly released PDB entry.

We welcome your comments at validation@mail.wwpdb.org

A user guide is available at

<https://www.wwpdb.org/validation/2017/XrayValidationReportHelp>

with specific help available everywhere you see the ⓘ symbol.

The types of validation reports are described at

<http://www.wwpdb.org/validation/2017/FAQs#types>.

The following versions of software and data (see [references ⓘ](#)) were used in the production of this report:

MolProbity : 4.02b-467
Mogul : 1.8.5 (274361), CSD as541be (2020)
Xtrriage (Phenix) : 1.13
EDS : 2.35.1
Percentile statistics : 20191225.v01 (using entries in the PDB archive December 25th 2019)
Refmac : 5.8.0158
CCP4 : 7.0.044 (Gargrove)
Ideal geometry (proteins) : Engh & Huber (2001)
Ideal geometry (DNA, RNA) : Parkinson et al. (1996)
Validation Pipeline (wwPDB-VP) : 2.35.1

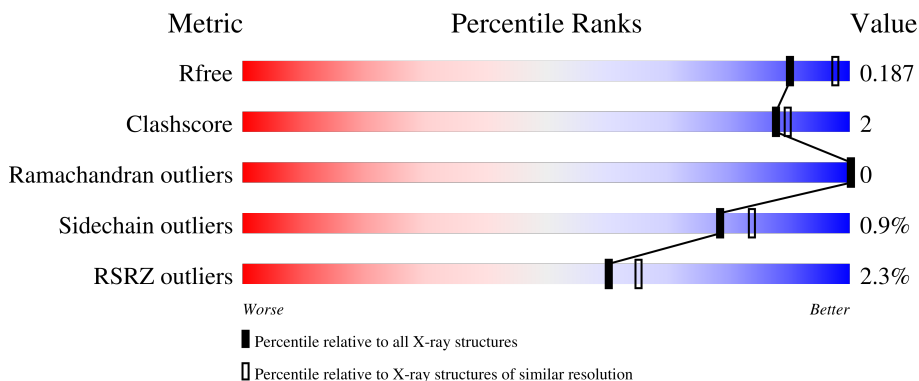
1 Overall quality at a glance

The following experimental techniques were used to determine the structure:

X-RAY DIFFRACTION

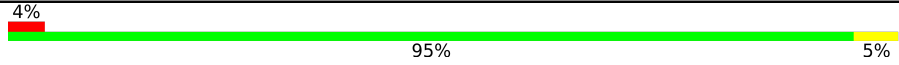
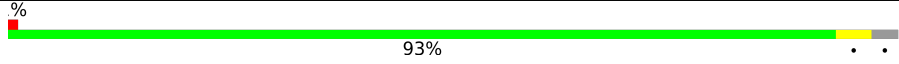
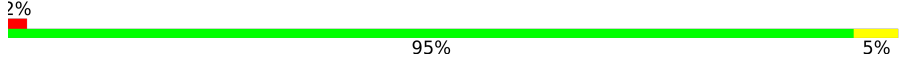
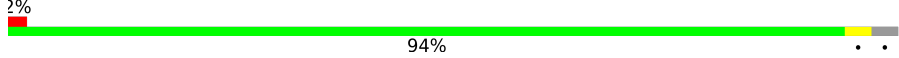
The reported resolution of this entry is 2.10 Å.

Percentile scores (ranging between 0-100) for global validation metrics of the entry are shown in the following graphic. The table shows the number of entries on which the scores are based.



Metric	Whole archive (#Entries)	Similar resolution (#Entries, resolution range(Å))
R_{free}	130704	5197 (2.10-2.10)
Clashscore	141614	5710 (2.10-2.10)
Ramachandran outliers	138981	5647 (2.10-2.10)
Sidechain outliers	138945	5648 (2.10-2.10)
RSRZ outliers	127900	5083 (2.10-2.10)

The table below summarises the geometric issues observed across the polymeric chains and their fit to the electron density. The red, orange, yellow and green segments of the lower bar indicate the fraction of residues that contain outliers for ≥ 3 , 2, 1 and 0 types of geometric quality criteria respectively. A grey segment represents the fraction of residues that are not modelled. The numeric value for each fraction is indicated below the corresponding segment, with a dot representing fractions $\leq 5\%$. The upper red bar (where present) indicates the fraction of residues that have poor fit to the electron density. The numeric value is given above the bar.

Mol	Chain	Length	Quality of chain
1	A	298	 4% 95% 5%
1	B	298	 % 93% . .
1	C	298	 2% 95% 5%
1	D	298	 2% 94% . .

2 Entry composition i

There are 6 unique types of molecules in this entry. The entry contains 9924 atoms, of which 0 are hydrogens and 0 are deuteriums.

In the tables below, the ZeroOcc column contains the number of atoms modelled with zero occupancy, the AltConf column contains the number of residues with at least one atom in alternate conformation and the Trace column contains the number of residues modelled with at most 2 atoms.

- Molecule 1 is a protein called D-tagatose 3-epimerase.

Mol	Chain	Residues	Atoms					ZeroOcc	AltConf	Trace
			Total	C	N	O	S			
1	A	298	2402	1521	423	438	20	0	4	0
1	B	290	2304	1460	399	427	18	0	1	0
1	C	298	2375	1504	416	437	18	0	1	0
1	D	290	2301	1459	396	427	19	0	1	0

There are 88 discrepancies between the modelled and reference sequences:

Chain	Residue	Modelled	Actual	Comment	Reference
A	9	SER	THR	engineered mutation	UNP O50580
A	39	SER	GLY	engineered mutation	UNP O50580
A	109	ASN	THR	engineered mutation	UNP O50580
A	116	HIS	SER	engineered mutation	UNP O50580
A	122	VAL	LYS	engineered mutation	UNP O50580
A	153	ALA	VAL	engineered mutation	UNP O50580
A	157	TYR	PHE	engineered mutation	UNP O50580
A	183	HIS	GLN	engineered mutation	UNP O50580
A	194	ASN	THR	engineered mutation	UNP O50580
A	215	GLN	ALA	engineered mutation	UNP O50580
A	245	ILE	MET	engineered mutation	UNP O50580
A	251	THR	LYS	engineered mutation	UNP O50580
A	260	CYS	GLY	engineered mutation	UNP O50580
A	265	LEU	MET	engineered mutation	UNP O50580
A	291	LEU	-	expression tag	UNP O50580
A	292	GLU	-	expression tag	UNP O50580
A	293	HIS	-	expression tag	UNP O50580
A	294	HIS	-	expression tag	UNP O50580
A	295	HIS	-	expression tag	UNP O50580
A	296	HIS	-	expression tag	UNP O50580
A	297	HIS	-	expression tag	UNP O50580

Continued on next page...

Continued from previous page...

Chain	Residue	Modelled	Actual	Comment	Reference
A	298	HIS	-	expression tag	UNP O50580
B	9	SER	THR	engineered mutation	UNP O50580
B	39	SER	GLY	engineered mutation	UNP O50580
B	109	ASN	THR	engineered mutation	UNP O50580
B	116	HIS	SER	engineered mutation	UNP O50580
B	122	VAL	LYS	engineered mutation	UNP O50580
B	153	ALA	VAL	engineered mutation	UNP O50580
B	157	TYR	PHE	engineered mutation	UNP O50580
B	183	HIS	GLN	engineered mutation	UNP O50580
B	194	ASN	THR	engineered mutation	UNP O50580
B	215	GLN	ALA	engineered mutation	UNP O50580
B	245	ILE	MET	engineered mutation	UNP O50580
B	251	THR	LYS	engineered mutation	UNP O50580
B	260	CYS	GLY	engineered mutation	UNP O50580
B	265	LEU	MET	engineered mutation	UNP O50580
B	291	LEU	-	expression tag	UNP O50580
B	292	GLU	-	expression tag	UNP O50580
B	293	HIS	-	expression tag	UNP O50580
B	294	HIS	-	expression tag	UNP O50580
B	295	HIS	-	expression tag	UNP O50580
B	296	HIS	-	expression tag	UNP O50580
B	297	HIS	-	expression tag	UNP O50580
B	298	HIS	-	expression tag	UNP O50580
C	9	SER	THR	engineered mutation	UNP O50580
C	39	SER	GLY	engineered mutation	UNP O50580
C	109	ASN	THR	engineered mutation	UNP O50580
C	116	HIS	SER	engineered mutation	UNP O50580
C	122	VAL	LYS	engineered mutation	UNP O50580
C	153	ALA	VAL	engineered mutation	UNP O50580
C	157	TYR	PHE	engineered mutation	UNP O50580
C	183	HIS	GLN	engineered mutation	UNP O50580
C	194	ASN	THR	engineered mutation	UNP O50580
C	215	GLN	ALA	engineered mutation	UNP O50580
C	245	ILE	MET	engineered mutation	UNP O50580
C	251	THR	LYS	engineered mutation	UNP O50580
C	260	CYS	GLY	engineered mutation	UNP O50580
C	265	LEU	MET	engineered mutation	UNP O50580
C	291	LEU	-	expression tag	UNP O50580
C	292	GLU	-	expression tag	UNP O50580
C	293	HIS	-	expression tag	UNP O50580
C	294	HIS	-	expression tag	UNP O50580
C	295	HIS	-	expression tag	UNP O50580

Continued on next page...

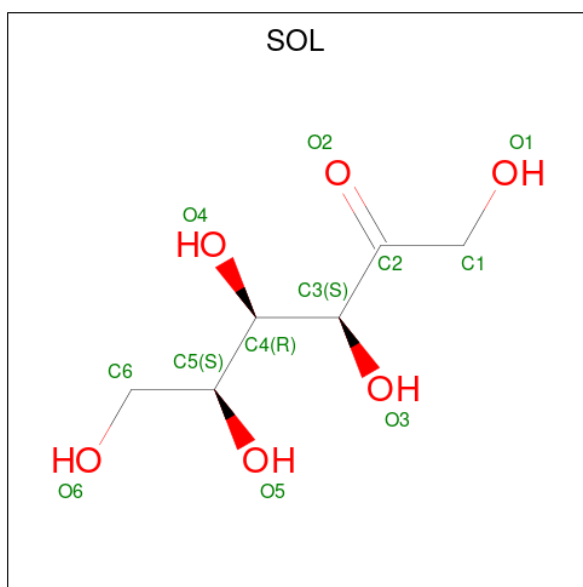
Continued from previous page...

Chain	Residue	Modelled	Actual	Comment	Reference
C	296	HIS	-	expression tag	UNP O50580
C	297	HIS	-	expression tag	UNP O50580
C	298	HIS	-	expression tag	UNP O50580
D	9	SER	THR	engineered mutation	UNP O50580
D	39	SER	GLY	engineered mutation	UNP O50580
D	109	ASN	THR	engineered mutation	UNP O50580
D	116	HIS	SER	engineered mutation	UNP O50580
D	122	VAL	LYS	engineered mutation	UNP O50580
D	153	ALA	VAL	engineered mutation	UNP O50580
D	157	TYR	PHE	engineered mutation	UNP O50580
D	183	HIS	GLN	engineered mutation	UNP O50580
D	194	ASN	THR	engineered mutation	UNP O50580
D	215	GLN	ALA	engineered mutation	UNP O50580
D	245	ILE	MET	engineered mutation	UNP O50580
D	251	THR	LYS	engineered mutation	UNP O50580
D	260	CYS	GLY	engineered mutation	UNP O50580
D	265	LEU	MET	engineered mutation	UNP O50580
D	291	LEU	-	expression tag	UNP O50580
D	292	GLU	-	expression tag	UNP O50580
D	293	HIS	-	expression tag	UNP O50580
D	294	HIS	-	expression tag	UNP O50580
D	295	HIS	-	expression tag	UNP O50580
D	296	HIS	-	expression tag	UNP O50580
D	297	HIS	-	expression tag	UNP O50580
D	298	HIS	-	expression tag	UNP O50580

- Molecule 2 is MANGANESE (II) ION (three-letter code: MN) (formula: Mn).

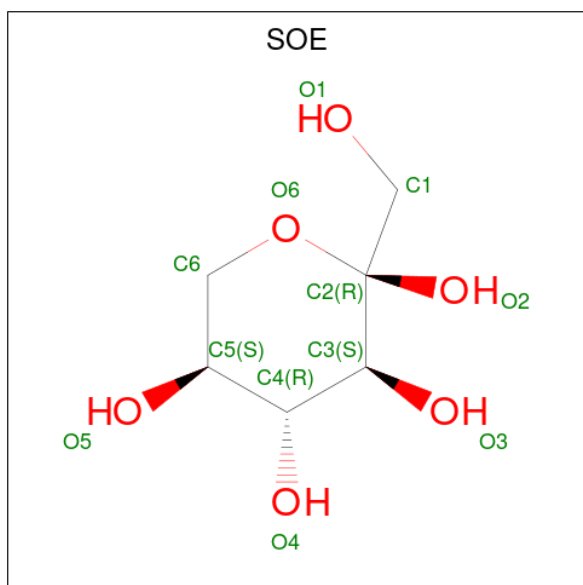
Mol	Chain	Residues	Atoms	ZeroOcc	AltConf
2	A	2	Total Mn 2 2	0	0
2	B	1	Total Mn 1 1	0	0
2	C	1	Total Mn 1 1	0	0
2	D	1	Total Mn 1 1	0	0

- Molecule 3 is L-sorbose (three-letter code: SOL) (formula: C₆H₁₂O₆).



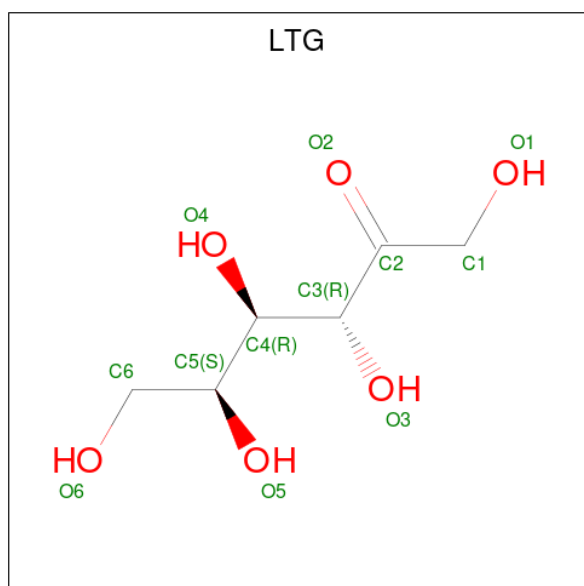
Mol	Chain	Residues	Atoms	ZeroOcc	AltConf
3	A	1	Total C O 12 6 6	0	1
3	B	1	Total C O 12 6 6	0	1
3	C	1	Total C O 12 6 6	0	1
3	D	1	Total C O 12 6 6	0	1

- Molecule 4 is alpha-L-sorbopyranose (three-letter code: SOE) (formula: C₆H₁₂O₆).



Mol	Chain	Residues	Atoms	ZeroOcc	AltConf
4	A	1	Total C O 12 6 6	0	0
4	A	1	Total C O 12 6 6	0	0
4	B	1	Total C O 12 6 6	0	0
4	C	1	Total C O 12 6 6	0	0
4	D	1	Total C O 12 6 6	0	0

- Molecule 5 is L-tagatose (three-letter code: LTG) (formula: C₆H₁₂O₆).



Mol	Chain	Residues	Atoms	ZeroOcc	AltConf
5	A	1	Total C O 12 6 6	0	1
5	B	1	Total C O 12 6 6	0	1
5	C	1	Total C O 12 6 6	0	1
5	D	1	Total C O 12 6 6	0	1

- Molecule 6 is water.

Mol	Chain	Residues	Atoms	ZeroOcc	AltConf
6	A	82	Total O 85 85	0	3

Continued on next page...

Continued from previous page...

Mol	Chain	Residues	Atoms	ZeroOcc	AltConf
6	B	91	Total O 95 95	0	4
6	C	96	Total O 100 100	0	4
6	D	98	Total O 101 101	0	3

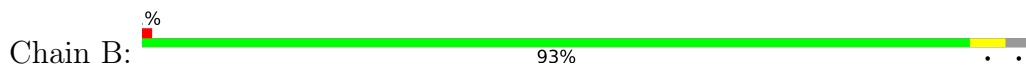
3 Residue-property plots [i](#)

These plots are drawn for all protein, RNA, DNA and oligosaccharide chains in the entry. The first graphic for a chain summarises the proportions of the various outlier classes displayed in the second graphic. The second graphic shows the sequence view annotated by issues in geometry and electron density. Residues are color-coded according to the number of geometric quality criteria for which they contain at least one outlier: green = 0, yellow = 1, orange = 2 and red = 3 or more. A red dot above a residue indicates a poor fit to the electron density ($RSRZ > 2$). Stretches of 2 or more consecutive residues without any outlier are shown as a green connector. Residues present in the sample, but not in the model, are shown in grey.

- Molecule 1: D-tagatose 3-epimerase



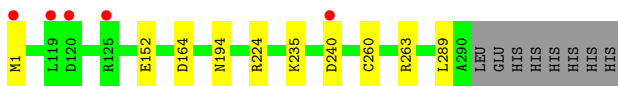
- Molecule 1: D-tagatose 3-epimerase



- Molecule 1: D-tagatose 3-epimerase



- Molecule 1: D-tagatose 3-epimerase



4 Data and refinement statistics

Property	Value	Source
Space group	P 1 21 1	Depositor
Cell constants a, b, c, α , β , γ	102.81Å 47.44Å 126.38Å 90.00° 102.49° 90.00°	Depositor
Resolution (Å)	36.85 – 2.10 36.85 – 2.10	Depositor EDS
% Data completeness (in resolution range)	98.7 (36.85-2.10) 98.8 (36.85-2.10)	Depositor EDS
R_{merge}	0.11	Depositor
R_{sym}	(Not available)	Depositor
$\langle I/\sigma(I) \rangle$ ¹	3.83 (at 2.10Å)	Xtrriage
Refinement program		Depositor
R, R_{free}	0.152 , 0.181 0.163 , 0.187	Depositor DCC
R_{free} test set	3506 reflections (5.05%)	wwPDB-VP
Wilson B-factor (Å ²)	21.5	Xtrriage
Anisotropy	0.144	Xtrriage
Bulk solvent k_{sol} (e/Å ³), B_{sol} (Å ²)	0.42 , 53.8	EDS
L-test for twinning ²	$\langle L \rangle = 0.48$, $\langle L^2 \rangle = 0.31$	Xtrriage
Estimated twinning fraction	No twinning to report.	Xtrriage
F_o, F_c correlation	0.96	EDS
Total number of atoms	9924	wwPDB-VP
Average B, all atoms (Å ²)	23.0	wwPDB-VP

Xtrriage's analysis on translational NCS is as follows: *The analyses of the Patterson function reveals a significant off-origin peak that is 27.30 % of the origin peak, indicating pseudo-translational symmetry. The chance of finding a peak of this or larger height randomly in a structure without pseudo-translational symmetry is equal to 2.2562e-03. The detected translational NCS is most likely also responsible for the elevated intensity ratio.*

¹Intensities estimated from amplitudes.

²Theoretical values of $\langle |L| \rangle$, $\langle L^2 \rangle$ for acentric reflections are 0.5, 0.333 respectively for untwinned datasets, and 0.375, 0.2 for perfectly twinned datasets.

5 Model quality [i](#)

5.1 Standard geometry [i](#)

Bond lengths and bond angles in the following residue types are not validated in this section: LTG, SOL, MN, SOE

The Z score for a bond length (or angle) is the number of standard deviations the observed value is removed from the expected value. A bond length (or angle) with $|Z| > 5$ is considered an outlier worth inspection. RMSZ is the root-mean-square of all Z scores of the bond lengths (or angles).

Mol	Chain	Bond lengths		Bond angles	
		RMSZ	# Z >5	RMSZ	# Z >5
1	A	0.60	0/2470	0.71	1/3336 (0.0%)
1	B	0.59	0/2360	0.71	0/3189
1	C	0.59	0/2437	0.71	2/3295 (0.1%)
1	D	0.58	0/2357	0.71	2/3185 (0.1%)
All	All	0.59	0/9624	0.71	5/13005 (0.0%)

There are no bond length outliers.

All (5) bond angle outliers are listed below:

Mol	Chain	Res	Type	Atoms	Z	Observed(°)	Ideal(°)
1	C	50	ARG	NE-CZ-NH2	5.52	123.06	120.30
1	A	164	ASP	CB-CG-OD1	5.51	123.26	118.30
1	C	92	ARG	NE-CZ-NH1	5.28	122.94	120.30
1	D	224	ARG	NE-CZ-NH2	-5.25	117.67	120.30
1	D	164	ASP	CB-CG-OD1	5.06	122.85	118.30

There are no chirality outliers.

There are no planarity outliers.

5.2 Too-close contacts [i](#)

In the following table, the Non-H and H(model) columns list the number of non-hydrogen atoms and hydrogen atoms in the chain respectively. The H(added) column lists the number of hydrogen atoms added and optimized by MolProbity. The Clashes column lists the number of clashes within the asymmetric unit, whereas Symm-Clashes lists symmetry-related clashes.

Mol	Chain	Non-H	H(model)	H(added)	Clashes	Symm-Clashes
1	A	2402	0	2341	11	0
1	B	2304	0	2252	12	0

Continued on next page...

Continued from previous page...

Mol	Chain	Non-H	H(model)	H(added)	Clashes	Symm-Clashes
1	C	2375	0	2300	8	0
1	D	2301	0	2248	7	0
2	A	2	0	0	0	0
2	B	1	0	0	0	0
2	C	1	0	0	0	0
2	D	1	0	0	0	0
3	A	12	0	0	1	0
3	B	12	0	0	0	0
3	C	12	0	0	0	0
3	D	12	0	0	0	0
4	A	24	0	24	1	0
4	B	12	0	12	1	0
4	C	12	0	12	1	0
4	D	12	0	12	1	0
5	A	12	0	11	1	0
5	B	12	0	12	1	0
5	C	12	0	12	2	0
5	D	12	0	12	3	0
6	A	85	0	0	0	0
6	B	95	0	0	1	0
6	C	100	0	0	3	0
6	D	101	0	0	1	0
All	All	9924	0	9248	38	0

The all-atom clashscore is defined as the number of clashes found per 1000 atoms (including hydrogen atoms). The all-atom clashscore for this structure is 2.

All (38) close contacts within the same asymmetric unit are listed below, sorted by their clash magnitude.

Atom-1	Atom-2	Interatomic distance (Å)	Clash overlap (Å)
4:A:504:SOE:H6	1:B:121:MET:HE1	1.69	0.74
1:B:115:GLN:HE21	1:B:160:TRP:HE1	1.36	0.74
1:B:263[B]:ARG:NH1	6:B:640:HOH:O	2.19	0.74
4:D:502:SOE:HO1	4:D:502:SOE:HO3	1.32	0.73
5:C:303[B]:LTG:H3	5:C:303[B]:LTG:H12	1.36	0.71
1:A:164:ASP:OD2	1:B:263[B]:ARG:NH1	2.23	0.71
1:A:115:GLN:HE21	1:A:160:TRP:HE1	1.38	0.70
1:A:66:CYS:SG	5:A:505[B]:LTG:H11	2.33	0.69
1:A:257:ARG:NH1	1:B:118:PRO:O	2.25	0.67
1:C:115:GLN:HE21	1:C:160:TRP:HE1	1.39	0.67
1:C:50:ARG:NH1	4:C:302:SOE:O1	2.23	0.67

Continued on next page...

Continued from previous page...

Atom-1	Atom-2	Interatomic distance (Å)	Clash overlap (Å)
1:C:152:GLU:OE1	5:C:303[B]:LTG:H4	1.97	0.63
5:D:503[B]:LTG:O4	5:D:503[B]:LTG:H7	1.99	0.62
5:D:503[B]:LTG:O4	5:D:503[B]:LTG:C1	2.48	0.61
1:D:1:MET:SD	1:D:240:ASP:OD1	2.60	0.60
1:A:50:ARG:HH11	1:A:50:ARG:HG3	1.67	0.59
1:C:292:GLU:CB	6:C:414:HOH:O	2.51	0.57
1:B:1:MET:CE	1:B:286:ARG:HH11	2.24	0.51
1:D:152:GLU:OE1	5:D:503[B]:LTG:H4	2.11	0.49
1:D:194:ASN:ND2	6:D:696:HOH:O	2.39	0.49
1:B:21:ALA:HB1	4:B:502:SOE:H1A	1.93	0.48
1:A:207[B]:MET:CE	1:A:210:PHE:CD1	2.98	0.46
1:B:1:MET:HE3	1:B:286:ARG:HH11	1.81	0.46
1:A:224[A]:ARG:NH1	1:B:190:ASN:OD1	2.47	0.45
1:C:120:ASP:HB2	6:C:403:HOH:O	2.17	0.44
6:C:461:HOH:O	1:D:263:ARG:HD3	2.18	0.44
1:D:235:LYS:NZ	1:D:289:LEU:O	2.37	0.44
1:B:263[B]:ARG:HH21	1:B:263[B]:ARG:HD2	1.69	0.43
1:A:298:HIS:CD2	1:A:298:HIS:N	2.87	0.42
1:A:50:ARG:HG3	1:A:50:ARG:NH1	2.35	0.42
1:A:246:GLU:OE2	3:A:502[A]:SOL:C3	2.67	0.42
1:C:156:ARG:HB2	1:D:260:CYS:O	2.20	0.42
1:C:13:THR:O	1:C:253:GLY:HA3	2.19	0.42
1:C:187:PHE:CD1	1:C:217:ARG:HG2	2.55	0.41
1:B:152:GLU:OE1	5:B:503[B]:LTG:H4	2.20	0.41
1:D:1:MET:CG	1:D:240:ASP:OD1	2.69	0.41
1:A:207[B]:MET:HE1	1:A:210:PHE:CE1	2.55	0.41
1:B:13:THR:O	1:B:253:GLY:HA3	2.22	0.40

There are no symmetry-related clashes.

5.3 Torsion angles [i](#)

5.3.1 Protein backbone [i](#)

In the following table, the Percentiles column shows the percent Ramachandran outliers of the chain as a percentile score with respect to all X-ray entries followed by that with respect to entries of similar resolution.

The Analysed column shows the number of residues for which the backbone conformation was analysed, and the total number of residues.

Mol	Chain	Analysed	Favoured	Allowed	Outliers	Percentiles	
1	A	300/298 (101%)	295 (98%)	5 (2%)	0	100	100
1	B	289/298 (97%)	286 (99%)	3 (1%)	0	100	100
1	C	297/298 (100%)	293 (99%)	4 (1%)	0	100	100
1	D	289/298 (97%)	286 (99%)	3 (1%)	0	100	100
All	All	1175/1192 (99%)	1160 (99%)	15 (1%)	0	100	100

There are no Ramachandran outliers to report.

5.3.2 Protein sidechains [i](#)

In the following table, the Percentiles column shows the percent sidechain outliers of the chain as a percentile score with respect to all X-ray entries followed by that with respect to entries of similar resolution.

The Analysed column shows the number of residues for which the sidechain conformation was analysed, and the total number of residues.

Mol	Chain	Analysed	Rotameric	Outliers	Percentiles	
1	A	254/250 (102%)	249 (98%)	5 (2%)	55	60
1	B	243/250 (97%)	242 (100%)	1 (0%)	91	94
1	C	250/250 (100%)	247 (99%)	3 (1%)	71	77
1	D	243/250 (97%)	243 (100%)	0	100	100
All	All	990/1000 (99%)	981 (99%)	9 (1%)	78	84

All (9) residues with a non-rotameric sidechain are listed below:

Mol	Chain	Res	Type
1	A	8	TYR
1	A	99	LEU
1	A	122	VAL
1	A	267	ASN
1	A	276	GLU
1	B	99	LEU
1	C	122	VAL
1	C	140	LYS
1	C	267	ASN

Sometimes sidechains can be flipped to improve hydrogen bonding and reduce clashes. All (17) such sidechains are listed below:

Mol	Chain	Res	Type
1	A	2	ASN
1	A	115	GLN
1	A	116	HIS
1	A	267	ASN
1	A	283	GLN
1	A	298	HIS
1	B	2	ASN
1	B	115	GLN
1	B	116	HIS
1	B	267	ASN
1	C	115	GLN
1	C	116	HIS
1	C	267	ASN
1	C	283	GLN
1	C	298	HIS
1	D	2	ASN
1	D	283	GLN

5.3.3 RNA [i](#)

There are no RNA molecules in this entry.

5.4 Non-standard residues in protein, DNA, RNA chains [i](#)

There are no non-standard protein/DNA/RNA residues in this entry.

5.5 Carbohydrates [i](#)

There are no monosaccharides in this entry.

5.6 Ligand geometry [i](#)

Of 18 ligands modelled in this entry, 5 are monoatomic - leaving 13 for Mogul analysis.

In the following table, the Counts columns list the number of bonds (or angles) for which Mogul statistics could be retrieved, the number of bonds (or angles) that are observed in the model and the number of bonds (or angles) that are defined in the Chemical Component Dictionary. The Link column lists molecule types, if any, to which the group is linked. The Z score for a bond length (or angle) is the number of standard deviations the observed value is removed from the expected value. A bond length (or angle) with $|Z| > 2$ is considered an outlier worth inspection. RMSZ is the root-mean-square of all Z scores of the bond lengths (or angles).

Mol	Type	Chain	Res	Link	Bond lengths			Bond angles		
					Counts	RMSZ	# Z > 2	Counts	RMSZ	# Z > 2
3	SOL	A	502[A]	2	10,11,11	0.44	0	9,14,14	1.34	1 (11%)
4	SOE	B	502	-	12,12,12	1.11	0	18,18,18	3.22	10 (55%)
4	SOE	D	502	-	12,12,12	1.32	1 (8%)	18,18,18	3.68	11 (61%)
3	SOL	D	504[A]	2	10,11,11	0.39	0	9,14,14	0.57	0
4	SOE	C	302	-	12,12,12	1.52	3 (25%)	18,18,18	1.88	6 (33%)
5	LTG	D	503[B]	2	10,11,11	0.57	0	9,14,14	1.02	0
4	SOE	A	503	-	12,12,12	1.47	1 (8%)	18,18,18	3.18	9 (50%)
5	LTG	A	505[B]	2	10,11,11	0.60	0	9,14,14	1.33	1 (11%)
3	SOL	C	304[A]	2	10,11,11	0.45	0	9,14,14	1.39	1 (11%)
5	LTG	C	303[B]	2	10,11,11	0.46	0	9,14,14	1.44	2 (22%)
4	SOE	A	504	-	12,12,12	0.77	0	18,18,18	2.07	3 (16%)
5	LTG	B	503[B]	2	10,11,11	0.52	0	9,14,14	1.27	2 (22%)
3	SOL	B	504[A]	2	10,11,11	0.36	0	9,14,14	0.71	0

In the following table, the Chirals column lists the number of chiral outliers, the number of chiral centers analysed, the number of these observed in the model and the number defined in the Chemical Component Dictionary. Similar counts are reported in the Torsion and Rings columns. '-' means no outliers of that kind were identified.

Mol	Type	Chain	Res	Link	Chirals	Torsions	Rings
3	SOL	A	502[A]	2	-	8/16/16/16	-
4	SOE	B	502	-	-	3/3/23/23	0/1/1/1
4	SOE	D	502	-	-	3/3/23/23	0/1/1/1
3	SOL	D	504[A]	2	-	8/16/16/16	-
4	SOE	C	302	-	-	0/3/23/23	0/1/1/1
5	LTG	D	503[B]	2	-	7/16/16/16	-
4	SOE	A	503	-	-	0/3/23/23	0/1/1/1
5	LTG	A	505[B]	2	-	4/16/16/16	-
3	SOL	C	304[A]	2	-	9/16/16/16	-
5	LTG	C	303[B]	2	-	9/16/16/16	-
4	SOE	A	504	-	-	0/3/23/23	0/1/1/1
5	LTG	B	503[B]	2	-	13/16/16/16	-
3	SOL	B	504[A]	2	-	9/16/16/16	-

All (5) bond length outliers are listed below:

Mol	Chain	Res	Type	Atoms	Z	Observed(Å)	Ideal(Å)
4	A	503	SOE	O6-C2	3.95	1.46	1.42

Continued on next page...

Continued from previous page...

Mol	Chain	Res	Type	Atoms	Z	Observed(Å)	Ideal(Å)
4	C	302	SOE	O6-C2	3.43	1.45	1.42
4	D	502	SOE	O2-C2	3.07	1.46	1.40
4	C	302	SOE	C2-C3	-2.32	1.51	1.53
4	C	302	SOE	O2-C2	2.21	1.44	1.40

All (46) bond angle outliers are listed below:

Mol	Chain	Res	Type	Atoms	Z	Observed(°)	Ideal(°)
4	D	502	SOE	C5-C4-C3	-10.12	99.15	110.48
4	B	502	SOE	O6-C2-C3	7.74	117.50	109.76
4	A	503	SOE	C5-C4-C3	-7.04	102.59	110.48
4	D	502	SOE	O6-C2-C3	-6.70	103.06	109.76
4	A	503	SOE	O6-C2-C3	6.52	116.28	109.76
4	A	504	SOE	C6-O6-C2	5.92	120.79	114.09
4	B	502	SOE	O3-C3-C2	-5.30	101.53	109.95
4	A	503	SOE	C6-O6-C2	4.88	119.61	114.09
4	B	502	SOE	C2-C3-C4	4.48	116.71	110.70
4	D	502	SOE	O3-C3-C2	4.48	117.05	109.95
4	A	504	SOE	O6-C2-C1	4.44	111.08	105.58
4	D	502	SOE	O2-C2-C3	4.15	114.51	107.79
4	B	502	SOE	O5-C5-C4	4.10	118.36	110.14
4	B	502	SOE	O2-C2-O6	-3.85	104.43	110.69
4	C	302	SOE	O6-C2-C1	3.85	110.35	105.58
4	A	503	SOE	C2-C3-C4	-3.76	105.65	110.70
4	C	302	SOE	O2-C2-C1	-3.73	105.32	111.12
4	C	302	SOE	C6-O6-C2	3.67	118.24	114.09
4	A	503	SOE	O2-C2-C3	-3.61	101.94	107.79
4	A	503	SOE	O4-C4-C5	3.28	116.28	109.99
4	D	502	SOE	O4-C4-C5	3.24	116.20	109.99
5	C	303[B]	LTG	O1-C1-C2	-3.10	104.30	112.66
4	D	502	SOE	O6-C6-C5	3.10	115.75	111.11
4	B	502	SOE	C6-C5-C4	-2.97	106.01	109.67
4	B	502	SOE	O6-C6-C5	-2.92	106.73	111.11
4	B	502	SOE	O4-C4-C5	2.91	115.56	109.99
3	C	304[A]	SOL	O4-C4-C3	-2.87	103.98	109.21
5	A	505[B]	LTG	O1-C1-C2	-2.87	104.94	112.66
5	B	503[B]	LTG	O1-C1-C2	-2.83	105.03	112.66
4	D	502	SOE	O4-C4-C3	2.82	115.45	109.73
4	A	503	SOE	O5-C5-C4	2.80	115.74	110.14
4	D	502	SOE	O6-C2-C1	2.72	108.95	105.58
4	A	503	SOE	O6-C2-C1	2.58	108.78	105.58
4	A	504	SOE	O2-C2-C1	-2.51	107.21	111.12

Continued on next page...

Continued from previous page...

Mol	Chain	Res	Type	Atoms	Z	Observed(°)	Ideal(°)
4	C	302	SOE	O3-C3-C2	-2.48	106.02	109.95
5	C	303[B]	LTG	C6-C5-C4	-2.42	107.18	112.41
4	B	502	SOE	C6-O6-C2	2.33	116.73	114.09
4	A	503	SOE	O3-C3-C4	2.32	115.17	110.03
3	A	502[A]	SOL	O1-C1-C2	-2.30	106.46	112.66
4	D	502	SOE	O3-C3-C4	2.24	115.00	110.03
4	D	502	SOE	C2-C3-C4	-2.23	107.70	110.70
4	B	502	SOE	O1-C1-C2	2.10	116.33	111.86
5	B	503[B]	LTG	C6-C5-C4	-2.10	107.86	112.41
4	D	502	SOE	O5-C5-C4	2.10	114.34	110.14
4	C	302	SOE	O2-C2-O6	2.06	114.04	110.69
4	C	302	SOE	C6-C5-C4	2.03	112.16	109.67

There are no chirality outliers.

All (73) torsion outliers are listed below:

Mol	Chain	Res	Type	Atoms
3	A	502[A]	SOL	C1-C2-C3-C4
3	A	502[A]	SOL	O2-C2-C3-C4
3	A	502[A]	SOL	C2-C3-C4-C5
3	A	502[A]	SOL	C4-C5-C6-O6
3	A	502[A]	SOL	O5-C5-C6-O6
3	B	504[A]	SOL	O1-C1-C2-O2
3	B	504[A]	SOL	O1-C1-C2-C3
3	B	504[A]	SOL	C1-C2-C3-C4
3	B	504[A]	SOL	C3-C4-C5-O5
3	B	504[A]	SOL	O4-C4-C5-O5
3	C	304[A]	SOL	O4-C4-C5-C6
3	D	504[A]	SOL	C1-C2-C3-C4
3	D	504[A]	SOL	O5-C5-C6-O6
4	B	502	SOE	O1-C1-C2-O2
4	B	502	SOE	O1-C1-C2-O6
4	D	502	SOE	O1-C1-C2-O2
4	D	502	SOE	O1-C1-C2-C3
4	D	502	SOE	O1-C1-C2-O6
5	A	505[B]	LTG	O3-C3-C4-C5
5	A	505[B]	LTG	O3-C3-C4-O4
5	A	505[B]	LTG	C2-C3-C4-O4
5	B	503[B]	LTG	O4-C4-C5-O5
5	B	503[B]	LTG	C3-C4-C5-O5
5	B	503[B]	LTG	C4-C5-C6-O6
5	B	503[B]	LTG	O5-C5-C6-O6

Continued on next page...

Continued from previous page...

Mol	Chain	Res	Type	Atoms
5	B	503[B]	LTG	O3-C3-C4-C5
5	B	503[B]	LTG	C2-C3-C4-C5
5	B	503[B]	LTG	O3-C3-C4-O4
5	B	503[B]	LTG	C2-C3-C4-O4
5	B	503[B]	LTG	O1-C1-C2-O2
5	C	303[B]	LTG	O3-C3-C4-C5
5	C	303[B]	LTG	C2-C3-C4-C5
5	C	303[B]	LTG	O3-C3-C4-O4
5	C	303[B]	LTG	C2-C3-C4-O4
5	C	303[B]	LTG	O2-C2-C3-C4
5	C	303[B]	LTG	C1-C2-C3-C4
5	D	503[B]	LTG	O4-C4-C5-O5
5	D	503[B]	LTG	C3-C4-C5-O5
5	D	503[B]	LTG	O4-C4-C5-C6
5	D	503[B]	LTG	C3-C4-C5-C6
5	D	503[B]	LTG	C1-C2-C3-C4
3	D	504[A]	SOL	C4-C5-C6-O6
3	C	304[A]	SOL	O4-C4-C5-O5
3	D	504[A]	SOL	O4-C4-C5-O5
3	D	504[A]	SOL	C3-C4-C5-O5
3	B	504[A]	SOL	O4-C4-C5-C6
5	B	503[B]	LTG	O4-C4-C5-C6
3	B	504[A]	SOL	C3-C4-C5-C6
5	B	503[B]	LTG	C3-C4-C5-C6
3	C	304[A]	SOL	O5-C5-C6-O6
3	C	304[A]	SOL	C4-C5-C6-O6
3	D	504[A]	SOL	O4-C4-C5-C6
3	C	304[A]	SOL	C3-C4-C5-C6
3	D	504[A]	SOL	C3-C4-C5-C6
3	C	304[A]	SOL	C3-C4-C5-O5
5	A	505[B]	LTG	C2-C3-C4-C5
3	B	504[A]	SOL	O2-C2-C3-C4
3	D	504[A]	SOL	O2-C2-C3-C4
5	D	503[B]	LTG	O2-C2-C3-C4
3	A	502[A]	SOL	O2-C2-C3-O3
5	C	303[B]	LTG	O2-C2-C3-O3
3	A	502[A]	SOL	C1-C2-C3-O3
3	C	304[A]	SOL	C1-C2-C3-C4
5	B	503[B]	LTG	C1-C2-C3-C4
5	C	303[B]	LTG	C1-C2-C3-O3
5	D	503[B]	LTG	C1-C2-C3-O3
3	C	304[A]	SOL	O1-C1-C2-O2

Continued on next page...

Continued from previous page...

Mol	Chain	Res	Type	Atoms
5	C	303[B]	LTG	O1-C1-C2-O2
3	C	304[A]	SOL	O2-C2-C3-C4
5	B	503[B]	LTG	O2-C2-C3-C4
3	B	504[A]	SOL	O5-C5-C6-O6
3	A	502[A]	SOL	O3-C3-C4-C5
4	B	502	SOE	O1-C1-C2-C3

There are no ring outliers.

9 monomers are involved in 12 short contacts:

Mol	Chain	Res	Type	Clashes	Symm-Clashes
3	A	502[A]	SOL	1	0
4	B	502	SOE	1	0
4	D	502	SOE	1	0
4	C	302	SOE	1	0
5	D	503[B]	LTG	3	0
5	A	505[B]	LTG	1	0
5	C	303[B]	LTG	2	0
4	A	504	SOE	1	0
5	B	503[B]	LTG	1	0

5.7 Other polymers [i](#)

There are no such residues in this entry.

5.8 Polymer linkage issues [i](#)

There are no chain breaks in this entry.

6 Fit of model and data

6.1 Protein, DNA and RNA chains

In the following table, the column labelled ‘#RSRZ > 2’ contains the number (and percentage) of RSRZ outliers, followed by percent RSRZ outliers for the chain as percentile scores relative to all X-ray entries and entries of similar resolution. The OWAB column contains the minimum, median, 95th percentile and maximum values of the occupancy-weighted average B-factor per residue. The column labelled ‘Q < 0.9’ lists the number of (and percentage) of residues with an average occupancy less than 0.9.

Mol	Chain	Analysed	<RSRZ>	#RSRZ>2	OWAB(Å ²)	Q<0.9
1	A	298/298 (100%)	-0.12	12 (4%) 38 44	12, 21, 40, 69	0
1	B	290/298 (97%)	-0.12	3 (1%) 82 85	13, 22, 39, 64	0
1	C	298/298 (100%)	-0.18	7 (2%) 60 65	11, 19, 37, 60	0
1	D	290/298 (97%)	-0.16	5 (1%) 70 74	13, 22, 37, 64	0
All	All	1176/1192 (98%)	-0.14	27 (2%) 60 65	11, 21, 38, 69	0

All (27) RSRZ outliers are listed below:

Mol	Chain	Res	Type	RSRZ
1	A	122	VAL	6.8
1	D	1	MET	6.8
1	C	298	HIS	5.1
1	A	1	MET	4.5
1	B	1	MET	4.0
1	A	298	HIS	4.0
1	B	119	LEU	3.6
1	A	120	ASP	3.2
1	C	267	ASN	3.1
1	A	125	ARG	3.0
1	A	267	ASN	2.9
1	C	1	MET	2.9
1	D	240	ASP	2.9
1	D	120	ASP	2.8
1	A	133	GLU	2.7
1	D	119	LEU	2.6
1	D	125	ARG	2.4
1	C	291	LEU	2.3
1	C	268	GLY	2.3
1	B	240	ASP	2.2
1	C	191	ILE	2.2

Continued on next page...

Continued from previous page...

Mol	Chain	Res	Type	RSRZ
1	A	137	ARG	2.2
1	A	191	ILE	2.1
1	C	120	ASP	2.1
1	A	295	HIS	2.1
1	A	119	LEU	2.1
1	A	123	ASP	2.0

6.2 Non-standard residues in protein, DNA, RNA chains [i](#)

There are no non-standard protein/DNA/RNA residues in this entry.

6.3 Carbohydrates [i](#)

There are no monosaccharides in this entry.

6.4 Ligands [i](#)

In the following table, the Atoms column lists the number of modelled atoms in the group and the number defined in the chemical component dictionary. The B-factors column lists the minimum, median, 95th percentile and maximum values of B factors of atoms in the group. The column labelled 'Q< 0.9' lists the number of atoms with occupancy less than 0.9.

Mol	Type	Chain	Res	Atoms	RSCC	RSR	B-factors(Å ²)	Q<0.9
4	SOE	A	503	12/12	0.79	0.27	38,57,66,68	0
4	SOE	B	502	12/12	0.79	0.27	32,47,49,59	0
4	SOE	D	502	12/12	0.88	0.17	27,38,48,48	0
4	SOE	C	302	12/12	0.92	0.18	24,32,39,41	0
4	SOE	A	504	12/12	0.92	0.15	24,29,34,35	0
5	LTG	A	505[B]	12/12	0.92	0.20	16,21,27,27	12
3	SOL	C	304[A]	12/12	0.94	0.16	25,35,49,50	12
3	SOL	D	504[A]	12/12	0.94	0.18	28,44,58,64	12
5	LTG	B	503[B]	12/12	0.94	0.23	27,33,34,37	12
5	LTG	C	303[B]	12/12	0.94	0.16	20,26,31,32	12
3	SOL	A	502[A]	12/12	0.95	0.17	29,49,61,63	12
3	SOL	B	504[A]	12/12	0.95	0.23	37,50,61,70	12
5	LTG	D	503[B]	12/12	0.95	0.18	25,32,36,37	12
2	MN	B	501	1/1	0.99	0.07	27,27,27,27	0
2	MN	A	506	1/1	0.99	0.09	13,13,13,13	0
2	MN	C	301	1/1	1.00	0.07	21,21,21,21	0
2	MN	D	501	1/1	1.00	0.07	26,26,26,26	0

Continued on next page...

Continued from previous page...

Mol	Type	Chain	Res	Atoms	RSCC	RSR	B-factors(\AA^2)	Q<0.9
2	MN	A	501	1/1	1.00	0.07	22,22,22,22	0

6.5 Other polymers [i](#)

There are no such residues in this entry.