



# Full wwPDB X-ray Structure Validation Report ⓘ

Mar 28, 2024 – 12:16 pm GMT

PDB ID : 8PB3  
Title : PsiM in complex with SAH and norbaecocystin, monoclinic crystal form  
Authors : Wertén, S.; Hudspeth, J.; Rupp, B.  
Deposited on : 2023-06-08  
Resolution : 1.18 Å(reported)

This is a Full wwPDB X-ray Structure Validation Report for a publicly released PDB entry.

We welcome your comments at [validation@mail.wwpdb.org](mailto:validation@mail.wwpdb.org)

A user guide is available at

<https://www.wwpdb.org/validation/2017/XrayValidationReportHelp>

with specific help available everywhere you see the ⓘ symbol.

The types of validation reports are described at

<http://www.wwpdb.org/validation/2017/FAQs#types>.

---

The following versions of software and data (see [references ⓘ](#)) were used in the production of this report:

MolProbity : 4.02b-467  
Mogul : 1.8.4, CSD as541be (2020)  
Xtriage (Phenix) : 1.13  
EDS : 2.36  
buster-report : 1.1.7 (2018)  
Percentile statistics : 20191225.v01 (using entries in the PDB archive December 25th 2019)  
Refmac : 5.8.0158  
CCP4 : 7.0.044 (Gargrove)  
Ideal geometry (proteins) : Engh & Huber (2001)  
Ideal geometry (DNA, RNA) : Parkinson et al. (1996)  
Validation Pipeline (wwPDB-VP) : 2.36

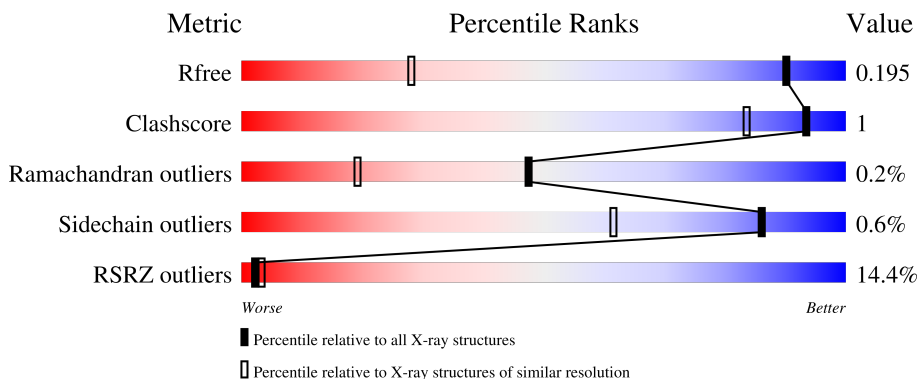
# 1 Overall quality at a glance

The following experimental techniques were used to determine the structure:

*X-RAY DIFFRACTION*

The reported resolution of this entry is 1.18 Å.

Percentile scores (ranging between 0-100) for global validation metrics of the entry are shown in the following graphic. The table shows the number of entries on which the scores are based.



Metric	Whole archive (#Entries)	Similar resolution (#Entries, resolution range(Å))
$R_{free}$	130704	1123 (1.20-1.16)
Clashscore	141614	1182 (1.20-1.16)
Ramachandran outliers	138981	1134 (1.20-1.16)
Sidechain outliers	138945	1134 (1.20-1.16)
RSRZ outliers	127900	1102 (1.20-1.16)

The table below summarises the geometric issues observed across the polymeric chains and their fit to the electron density. The red, orange, yellow and green segments of the lower bar indicate the fraction of residues that contain outliers for  $\geq 3$ , 2, 1 and 0 types of geometric quality criteria respectively. A grey segment represents the fraction of residues that are not modelled. The numeric value for each fraction is indicated below the corresponding segment, with a dot representing fractions  $\leq 5\%$ . The upper red bar (where present) indicates the fraction of residues that have poor fit to the electron density. The numeric value is given above the bar.

Mol	Chain	Length	Quality of chain
1	A	322	 11% 93% 5% 1% 1%
1	B	322	 17% 91% 5% 1% 1%

## 2 Entry composition [i](#)

There are 6 unique types of molecules in this entry. The entry contains 10796 atoms, of which 4997 are hydrogens and 0 are deuteriums.

In the tables below, the ZeroOcc column contains the number of atoms modelled with zero occupancy, the AltConf column contains the number of residues with at least one atom in alternate conformation and the Trace column contains the number of residues modelled with at most 2 atoms.

- Molecule 1 is a protein called Psilocybin synthase.

Mol	Chain	Residues	Atoms					ZeroOcc	AltConf	Trace	
			Total	C	H	N	O				S
1	A	310	4971	1583	2470	423	480	15	0	19	0
1	B	310	4959	1579	2465	419	481	15	0	18	0

There are 26 discrepancies between the modelled and reference sequences:

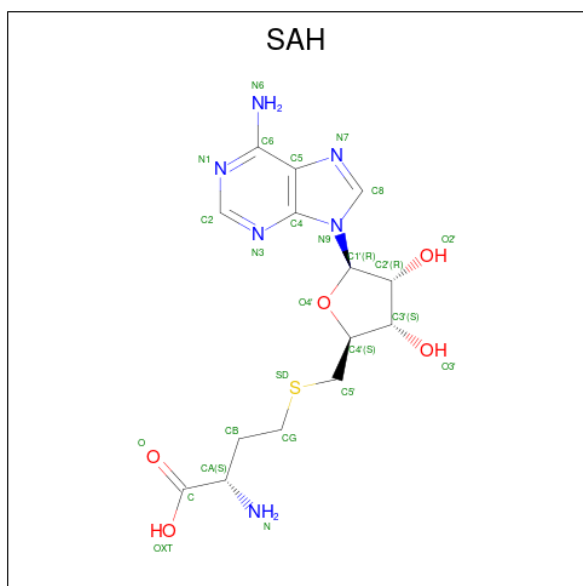
Chain	Residue	Modelled	Actual	Comment	Reference
A	-12	GLY	-	expression tag	UNP P0DPA9
A	-11	SER	-	expression tag	UNP P0DPA9
A	-10	HIS	-	expression tag	UNP P0DPA9
A	-9	MET	-	expression tag	UNP P0DPA9
A	-8	ALA	-	expression tag	UNP P0DPA9
A	-7	SER	-	expression tag	UNP P0DPA9
A	-6	GLU	-	expression tag	UNP P0DPA9
A	-5	ASN	-	expression tag	UNP P0DPA9
A	-4	LEU	-	expression tag	UNP P0DPA9
A	-3	TYR	-	expression tag	UNP P0DPA9
A	-2	PHE	-	expression tag	UNP P0DPA9
A	-1	GLN	-	expression tag	UNP P0DPA9
A	0	GLY	-	expression tag	UNP P0DPA9
B	-12	GLY	-	expression tag	UNP P0DPA9
B	-11	SER	-	expression tag	UNP P0DPA9
B	-10	HIS	-	expression tag	UNP P0DPA9
B	-9	MET	-	expression tag	UNP P0DPA9
B	-8	ALA	-	expression tag	UNP P0DPA9
B	-7	SER	-	expression tag	UNP P0DPA9
B	-6	GLU	-	expression tag	UNP P0DPA9
B	-5	ASN	-	expression tag	UNP P0DPA9
B	-4	LEU	-	expression tag	UNP P0DPA9
B	-3	TYR	-	expression tag	UNP P0DPA9
B	-2	PHE	-	expression tag	UNP P0DPA9
B	-1	GLN	-	expression tag	UNP P0DPA9

*Continued on next page...*

Continued from previous page...

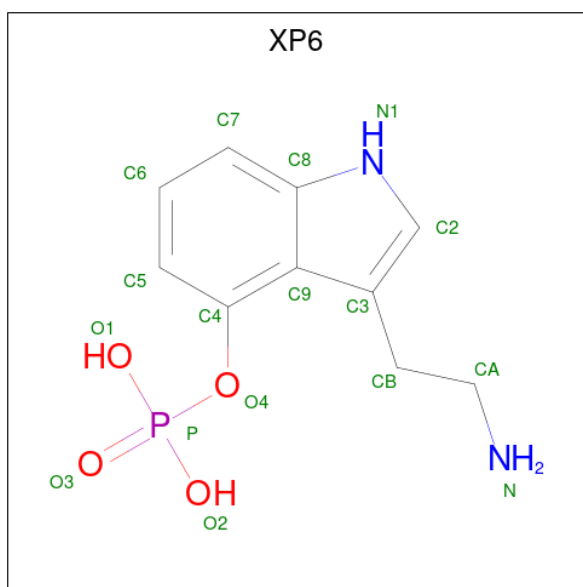
Chain	Residue	Modelled	Actual	Comment	Reference
B	0	GLY	-	expression tag	UNP P0DPA9

- Molecule 2 is S-ADENOSYL-L-HOMOCYSTEINE (three-letter code: SAH) (formula:  $C_{14}H_{20}N_6O_5S$ ) (labeled as "Ligand of Interest" by depositor).



Mol	Chain	Residues	Atoms					ZeroOcc	AltConf	
			Total	C	H	N	O			S
2	A	1	46	14	20	6	5	1	0	0
2	B	1	46	14	20	6	5	1	0	0

- Molecule 3 is Norbaeocystin (three-letter code: XP6) (formula:  $C_{10}H_{13}N_2O_4P$ ) (labeled as "Ligand of Interest" by depositor).



Mol	Chain	Residues	Atoms					ZeroOcc	AltConf	
			Total	C	H	N	O			P
3	A	1	28	10	11	2	4	1	0	0
3	B	1	28	10	11	2	4	1	0	0

- Molecule 4 is CHLORIDE ION (three-letter code: CL) (formula: Cl).

Mol	Chain	Residues	Atoms		ZeroOcc	AltConf
			Total	Cl		
4	A	1	1	1	0	0

- Molecule 5 is MAGNESIUM ION (three-letter code: MG) (formula: Mg).

Mol	Chain	Residues	Atoms		ZeroOcc	AltConf
			Total	Mg		
5	A	3	3	3	0	0
5	B	1	1	1	0	0

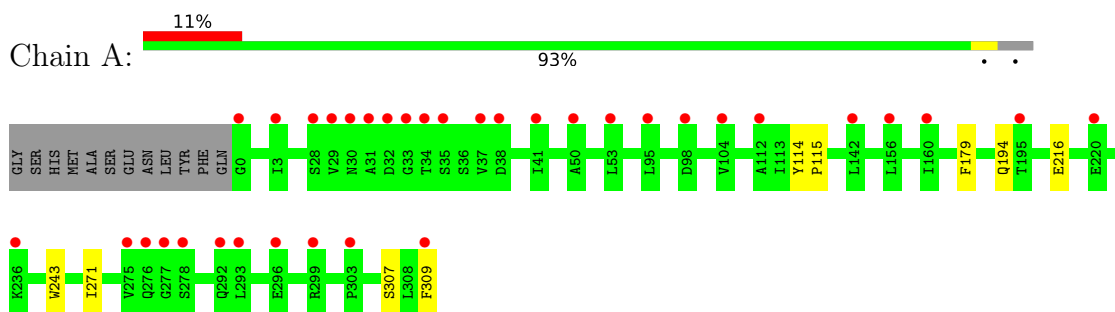
- Molecule 6 is water.

Mol	Chain	Residues	Atoms		ZeroOcc	AltConf
			Total	O		
6	A	386	386	386	0	1
6	B	327	327	327	0	0

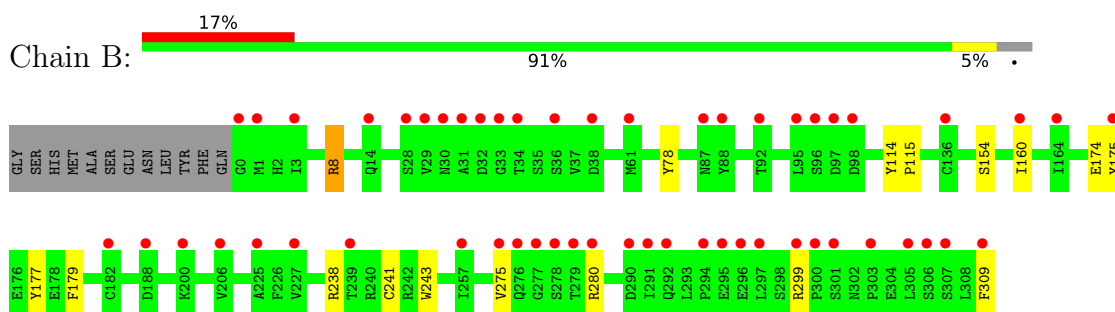
### 3 Residue-property plots [i](#)

These plots are drawn for all protein, RNA, DNA and oligosaccharide chains in the entry. The first graphic for a chain summarises the proportions of the various outlier classes displayed in the second graphic. The second graphic shows the sequence view annotated by issues in geometry and electron density. Residues are color-coded according to the number of geometric quality criteria for which they contain at least one outlier: green = 0, yellow = 1, orange = 2 and red = 3 or more. A red dot above a residue indicates a poor fit to the electron density ( $RSRZ > 2$ ). Stretches of 2 or more consecutive residues without any outlier are shown as a green connector. Residues present in the sample, but not in the model, are shown in grey.

- Molecule 1: Psilocybin synthase



- Molecule 1: Psilocybin synthase



## 4 Data and refinement statistics

Property	Value	Source
Space group	C 1 2 1	Depositor
Cell constants a, b, c, $\alpha$ , $\beta$ , $\gamma$	166.04Å 48.85Å 115.45Å 90.00° 131.40° 90.00°	Depositor
Resolution (Å)	20.69 – 1.18 43.30 – 1.18	Depositor EDS
% Data completeness (in resolution range)	97.2 (20.69-1.18) 97.3 (43.30-1.18)	Depositor EDS
$R_{merge}$	0.12	Depositor
$R_{sym}$	(Not available)	Depositor
$\langle I/\sigma(I) \rangle$ <sup>1</sup>	1.00 (at 1.18Å)	Xtrriage
Refinement program	PHENIX 1.20.1_4487	Depositor
R, $R_{free}$	0.183 , 0.196 0.183 , 0.195	Depositor DCC
$R_{free}$ test set	3294 reflections (1.48%)	wwPDB-VP
Wilson B-factor (Å <sup>2</sup> )	16.7	Xtrriage
Anisotropy	0.142	Xtrriage
Bulk solvent $k_{sol}$ (e/Å <sup>3</sup> ), $B_{sol}$ (Å <sup>2</sup> )	0.43 , 45.7	EDS
L-test for twinning <sup>2</sup>	$\langle  L  \rangle = 0.52$ , $\langle L^2 \rangle = 0.36$	Xtrriage
Estimated twinning fraction	0.001 for -h-2*1,-k,l	Xtrriage
$F_o, F_c$ correlation	0.96	EDS
Total number of atoms	10796	wwPDB-VP
Average B, all atoms (Å <sup>2</sup> )	25.0	wwPDB-VP

Xtrriage's analysis on translational NCS is as follows: *The largest off-origin peak in the Patterson function is 5.52% of the height of the origin peak. No significant pseudotranslation is detected.*

<sup>1</sup>Intensities estimated from amplitudes.

<sup>2</sup>Theoretical values of  $\langle |L| \rangle$ ,  $\langle L^2 \rangle$  for acentric reflections are 0.5, 0.333 respectively for untwinned datasets, and 0.375, 0.2 for perfectly twinned datasets.

## 5 Model quality [i](#)

### 5.1 Standard geometry [i](#)

Bond lengths and bond angles in the following residue types are not validated in this section: SAH, CL, MG, XP6

The Z score for a bond length (or angle) is the number of standard deviations the observed value is removed from the expected value. A bond length (or angle) with  $|Z| > 5$  is considered an outlier worth inspection. RMSZ is the root-mean-square of all Z scores of the bond lengths (or angles).

Mol	Chain	Bond lengths		Bond angles	
		RMSZ	# Z  >5	RMSZ	# Z  >5
1	A	0.67	0/2628	0.83	0/3572
1	B	0.62	0/2615	0.79	0/3554
All	All	0.65	0/5243	0.81	0/7126

Chiral center outliers are detected by calculating the chiral volume of a chiral center and verifying if the center is modelled as a planar moiety or with the opposite hand. A planarity outlier is detected by checking planarity of atoms in a peptide group, atoms in a mainchain group or atoms of a sidechain that are expected to be planar.

Mol	Chain	#Chirality outliers	#Planarity outliers
1	B	0	2

There are no bond length outliers.

There are no bond angle outliers.

There are no chirality outliers.

All (2) planarity outliers are listed below:

Mol	Chain	Res	Type	Group
1	B	8[A]	ARG	Mainchain,Sidechain

### 5.2 Too-close contacts [i](#)

In the following table, the Non-H and H(model) columns list the number of non-hydrogen atoms and hydrogen atoms in the chain respectively. The H(added) column lists the number of hydrogen atoms added and optimized by MolProbity. The Clashes column lists the number of clashes within the asymmetric unit, whereas Symm-Clashes lists symmetry-related clashes.



Mol	Chain	Non-H	H(model)	H(added)	Clashes	Symm-Clashes
1	A	2501	2470	2390	5	1
1	B	2494	2465	2394	9	1
2	A	26	20	19	1	0
2	B	26	20	19	0	0
3	A	17	11	0	0	0
3	B	17	11	0	0	0
4	A	1	0	0	0	0
5	A	3	0	0	0	0
5	B	1	0	0	0	0
6	A	386	0	0	1	0
6	B	327	0	0	1	0
All	All	5799	4997	4822	14	1

The all-atom clashscore is defined as the number of clashes found per 1000 atoms (including hydrogen atoms). The all-atom clashscore for this structure is 1.

All (14) close contacts within the same asymmetric unit are listed below, sorted by their clash magnitude.

Atom-1	Atom-2	Interatomic distance (Å)	Clash overlap (Å)
1:B:174:GLU:HG2	1:B:175:TYR:CD2	2.48	0.49
1:A:271:ILE:HD12	1:A:309:PHE:HE1	1.81	0.46
1:B:275:VAL:O	1:B:275:VAL:HG12	2.15	0.46
1:A:307:SER:HB2	6:A:667:HOH:O	2.15	0.46
1:B:177:TYR:O	1:B:241:CYS:HA	2.15	0.46
1:B:299:ARG:HD3	1:B:309:PHE:CD1	2.51	0.45
1:A:179:PHE:HA	1:A:243:TRP:O	2.17	0.44
1:B:280:ARG:NH1	1:B:280:ARG:HG2	2.32	0.44
1:B:299:ARG:CD	1:B:309:PHE:CD1	3.00	0.44
1:B:114:TYR:HB2	1:B:115:PRO:HD3	1.99	0.43
1:B:179:PHE:HA	1:B:243:TRP:O	2.18	0.43
1:A:216:GLU:HA	2:A:401:SAH:H2'	2.01	0.42
1:B:160[B]:ILE:HD12	6:B:824:HOH:O	2.20	0.42
1:A:114:TYR:HB2	1:A:115:PRO:HD3	2.03	0.40

All (1) symmetry-related close contacts are listed below. The label for Atom-2 includes the symmetry operator and encoded unit-cell translations to be applied.

Atom-1	Atom-2	Interatomic distance (Å)	Clash overlap (Å)
1:A:307:SER:OG	1:B:154[B]:SER:OG[4_556]	2.19	0.01

## 5.3 Torsion angles [i](#)

### 5.3.1 Protein backbone [i](#)

In the following table, the Percentiles column shows the percent Ramachandran outliers of the chain as a percentile score with respect to all X-ray entries followed by that with respect to entries of similar resolution.

The Analysed column shows the number of residues for which the backbone conformation was analysed, and the total number of residues.

Mol	Chain	Analysed	Favoured	Allowed	Outliers	Percentiles	
1	A	327/322 (102%)	320 (98%)	7 (2%)	0	100	100
1	B	326/322 (101%)	321 (98%)	4 (1%)	1 (0%)	41	17
All	All	653/644 (101%)	641 (98%)	11 (2%)	1 (0%)	47	19

All (1) Ramachandran outliers are listed below:

Mol	Chain	Res	Type
1	B	238	ARG

### 5.3.2 Protein sidechains [i](#)

In the following table, the Percentiles column shows the percent sidechain outliers of the chain as a percentile score with respect to all X-ray entries followed by that with respect to entries of similar resolution.

The Analysed column shows the number of residues for which the sidechain conformation was analysed, and the total number of residues.

Mol	Chain	Analysed	Rotameric	Outliers	Percentiles	
1	A	281/275 (102%)	279 (99%)	2 (1%)	84	57
1	B	281/275 (102%)	278 (99%)	3 (1%)	73	40
All	All	562/550 (102%)	557 (99%)	5 (1%)	86	49

All (5) residues with a non-rotameric sidechain are listed below:

Mol	Chain	Res	Type
1	A	194[A]	GLN
1	A	194[B]	GLN
1	B	8[A]	ARG
1	B	8[B]	ARG
1	B	78	TYR

Sometimes sidechains can be flipped to improve hydrogen bonding and reduce clashes. There are no such sidechains identified.

### 5.3.3 RNA [i](#)

There are no RNA molecules in this entry.

## 5.4 Non-standard residues in protein, DNA, RNA chains [i](#)

There are no non-standard protein/DNA/RNA residues in this entry.

## 5.5 Carbohydrates [i](#)

There are no monosaccharides in this entry.

## 5.6 Ligand geometry [i](#)

Of 9 ligands modelled in this entry, 5 are monoatomic - leaving 4 for Mogul analysis.

In the following table, the Counts columns list the number of bonds (or angles) for which Mogul statistics could be retrieved, the number of bonds (or angles) that are observed in the model and the number of bonds (or angles) that are defined in the Chemical Component Dictionary. The Link column lists molecule types, if any, to which the group is linked. The Z score for a bond length (or angle) is the number of standard deviations the observed value is removed from the expected value. A bond length (or angle) with  $|Z| > 2$  is considered an outlier worth inspection. RMSZ is the root-mean-square of all Z scores of the bond lengths (or angles).

Mol	Type	Chain	Res	Link	Bond lengths			Bond angles		
					Counts	RMSZ	# Z  > 2	Counts	RMSZ	# Z  > 2
2	SAH	A	401	-	24,28,28	0.93	2 (8%)	25,40,40	1.14	2 (8%)
3	XP6	B	402	-	16,18,18	0.87	0	18,26,26	1.03	1 (5%)
3	XP6	A	402	-	16,18,18	1.11	3 (18%)	18,26,26	1.06	2 (11%)
2	SAH	B	401	-	24,28,28	0.80	1 (4%)	25,40,40	1.12	2 (8%)

In the following table, the Chirals column lists the number of chiral outliers, the number of chiral centers analysed, the number of these observed in the model and the number defined in the Chemical Component Dictionary. Similar counts are reported in the Torsion and Rings columns. '-' means no outliers of that kind were identified.

Mol	Type	Chain	Res	Link	Chirals	Torsions	Rings
2	SAH	A	401	-	-	0/11/31/31	0/3/3/3
3	XP6	B	402	-	-	0/8/8/8	0/2/2/2

*Continued on next page...*

Continued from previous page...

Mol	Type	Chain	Res	Link	Chirals	Torsions	Rings
3	XP6	A	402	-	-	0/8/8/8	0/2/2/2
2	SAH	B	401	-	-	0/11/31/31	0/3/3/3

All (6) bond length outliers are listed below:

Mol	Chain	Res	Type	Atoms	Z	Observed(Å)	Ideal(Å)
2	B	401	SAH	C2'-C1'	-2.92	1.49	1.53
3	A	402	XP6	C3-C9	2.49	1.45	1.41
3	A	402	XP6	P-O4	2.19	1.62	1.59
3	A	402	XP6	C7-C8	-2.18	1.38	1.41
2	A	401	SAH	C8-N7	-2.15	1.30	1.34
2	A	401	SAH	O4'-C1'	2.00	1.43	1.41

All (7) bond angle outliers are listed below:

Mol	Chain	Res	Type	Atoms	Z	Observed(°)	Ideal(°)
2	B	401	SAH	O4'-C1'-C2'	-3.35	102.03	106.93
2	B	401	SAH	C5-C6-N6	3.05	124.99	120.35
2	A	401	SAH	O4'-C1'-C2'	-2.89	102.70	106.93
2	A	401	SAH	C5-C6-N6	2.47	124.10	120.35
3	B	402	XP6	O4-P-O3	-2.13	101.28	109.31
3	A	402	XP6	C7-C6-C5	-2.11	117.63	120.99
3	A	402	XP6	O4-C4-C5	2.05	124.74	121.40

There are no chirality outliers.

There are no torsion outliers.

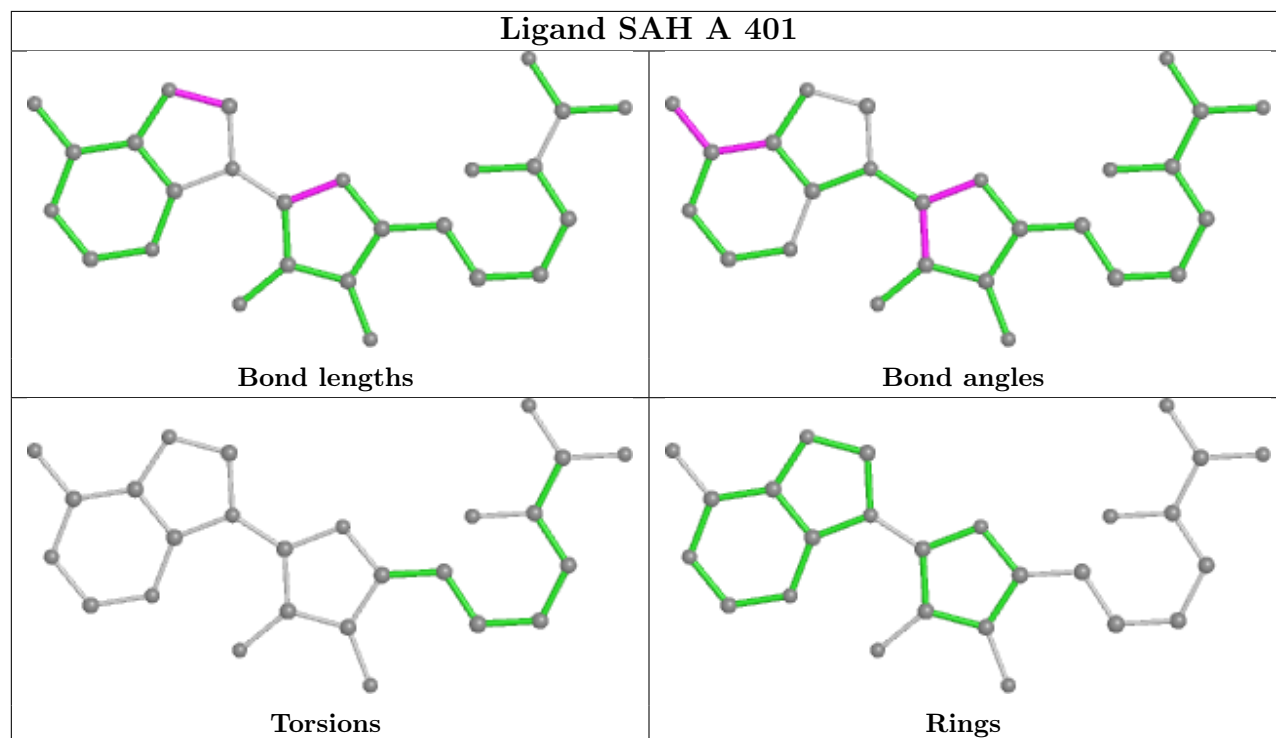
There are no ring outliers.

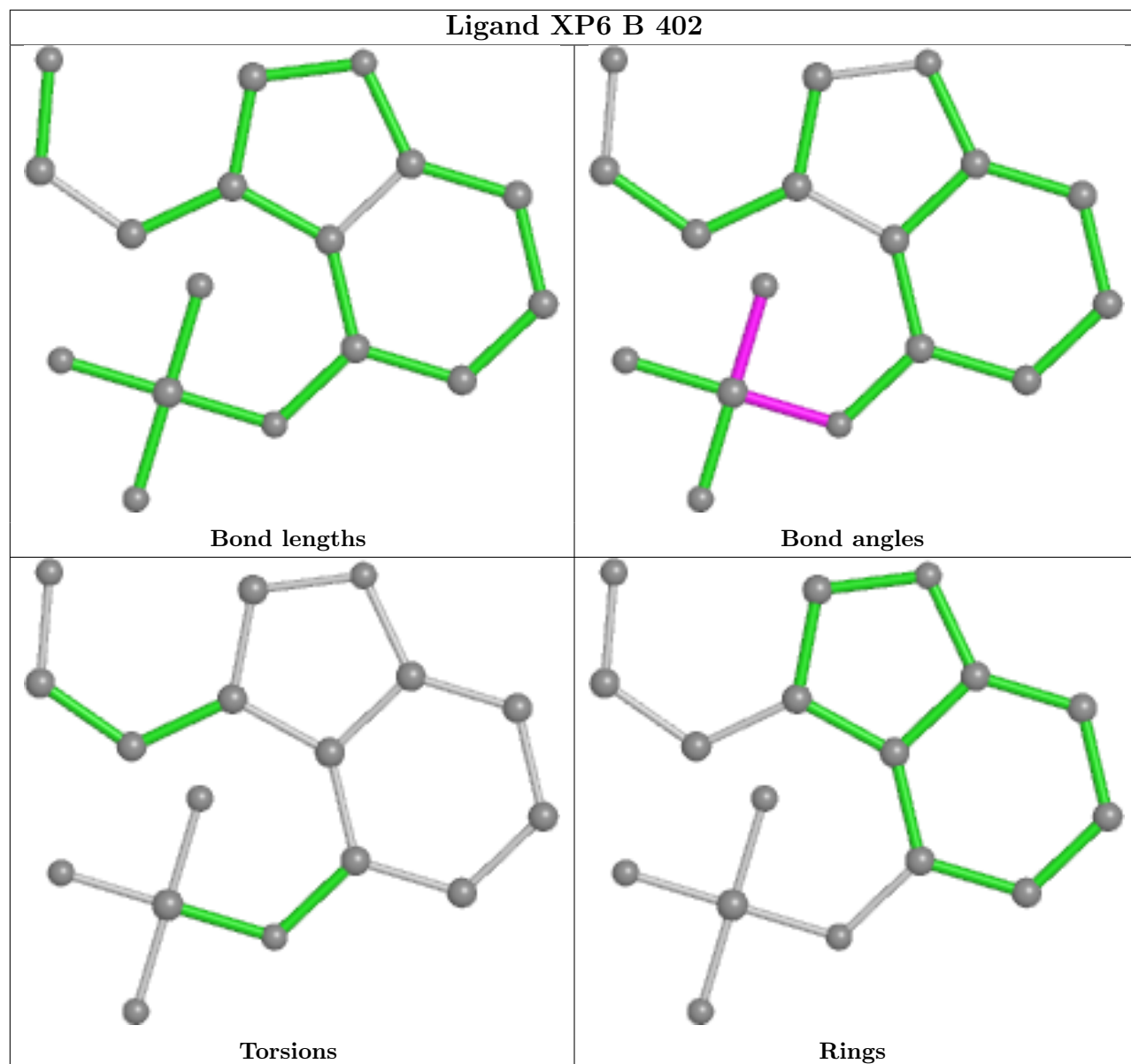
1 monomer is involved in 1 short contact:

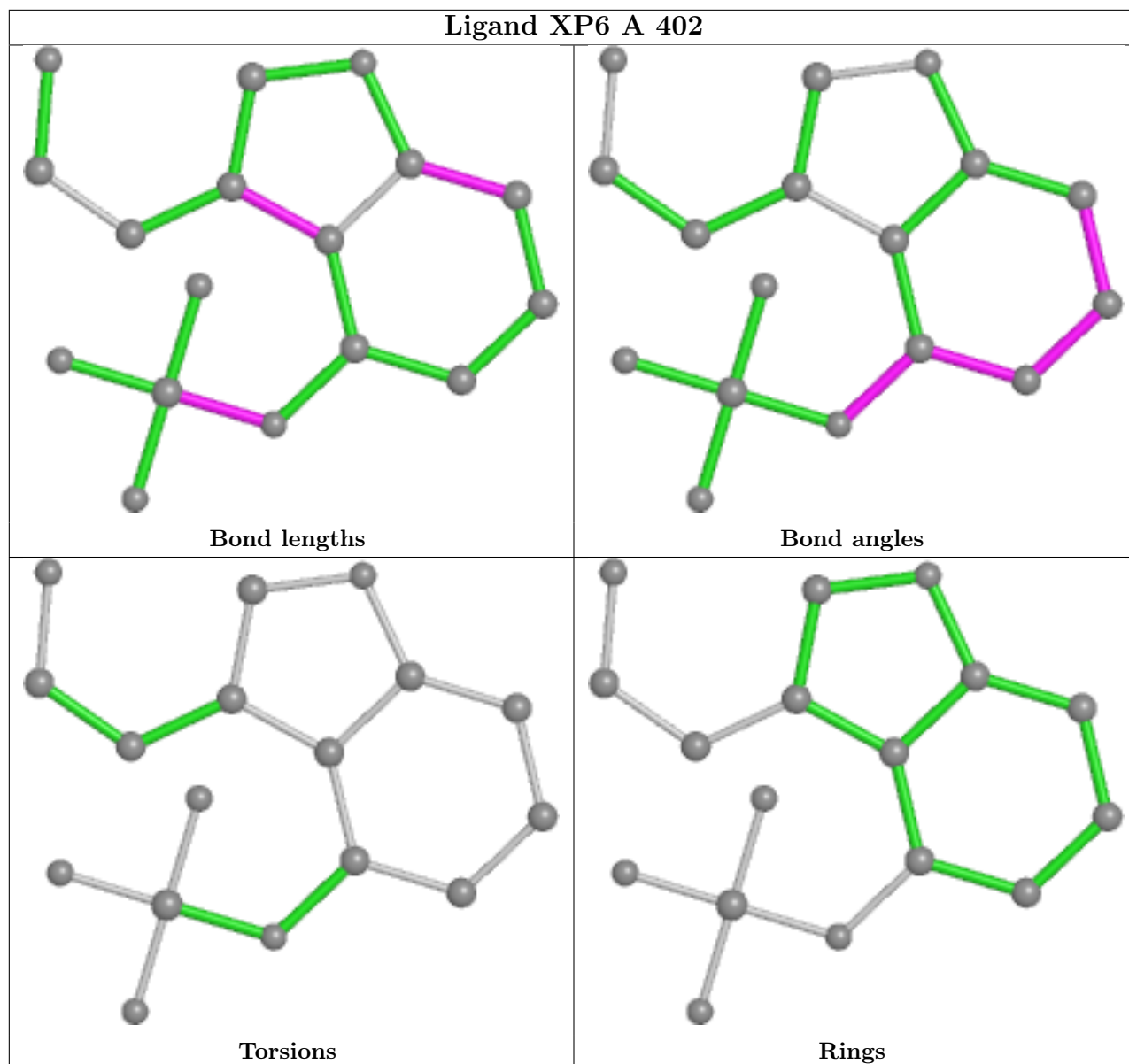
Mol	Chain	Res	Type	Clashes	Symm-Clashes
2	A	401	SAH	1	0

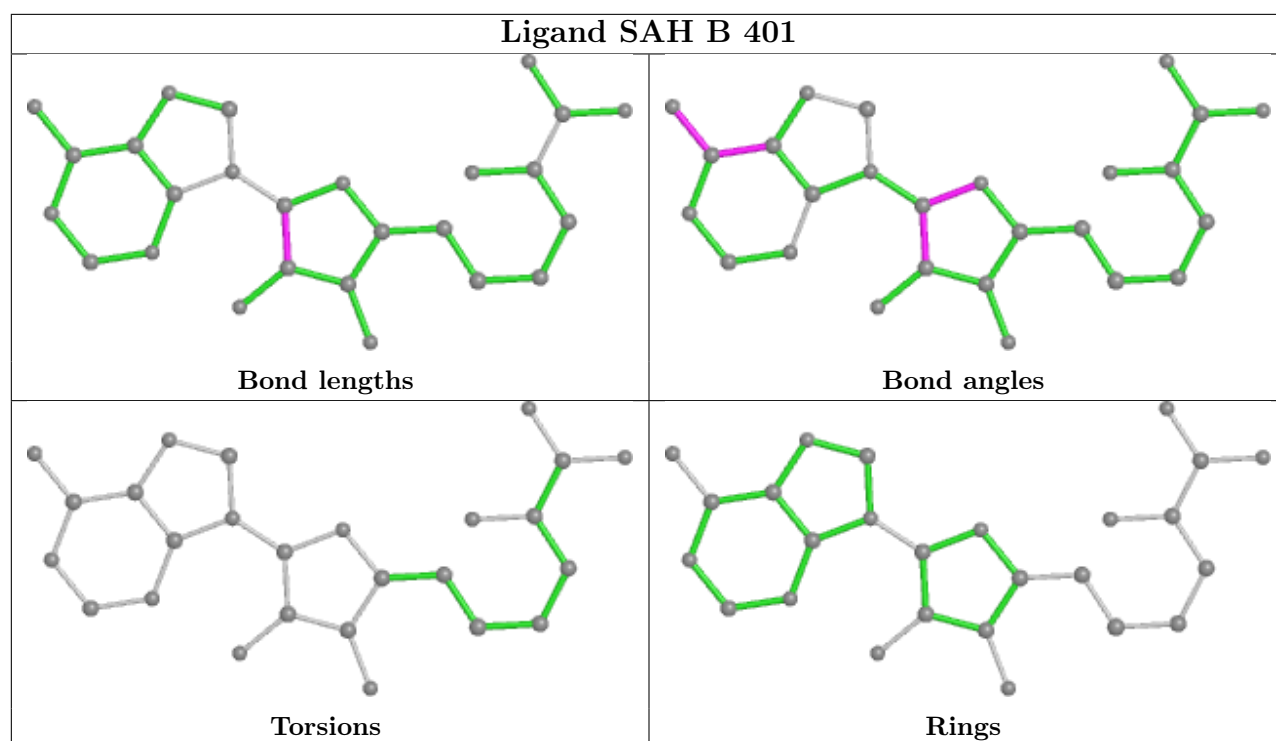
The following is a two-dimensional graphical depiction of Mogul quality analysis of bond lengths, bond angles, torsion angles, and ring geometry for all instances of the Ligand of Interest. In addition, ligands with molecular weight > 250 and outliers as shown on the validation Tables will also be included. For torsion angles, if less than 5% of the Mogul distribution of torsion angles is within 10 degrees of the torsion angle in question, then that torsion angle is considered an outlier. Any bond that is central to one or more torsion angles identified as an outlier by Mogul will be highlighted in the graph. For rings, the root-mean-square deviation (RMSD) between the ring in question and similar rings identified by Mogul is calculated over all ring torsion angles. If the average RMSD is greater than 60 degrees and the minimal RMSD between the ring in question and

any Mogul-identified rings is also greater than 60 degrees, then that ring is considered an outlier. The outliers are highlighted in purple. The color gray indicates Mogul did not find sufficient equivalents in the CSD to analyse the geometry.









## 5.7 Other polymers [i](#)

There are no such residues in this entry.

## 5.8 Polymer linkage issues [i](#)

There are no chain breaks in this entry.



## 6 Fit of model and data [i](#)

### 6.1 Protein, DNA and RNA chains [i](#)

In the following table, the column labelled ‘#RSRZ > 2’ contains the number (and percentage) of RSRZ outliers, followed by percent RSRZ outliers for the chain as percentile scores relative to all X-ray entries and entries of similar resolution. The OWAB column contains the minimum, median, 95<sup>th</sup> percentile and maximum values of the occupancy-weighted average B-factor per residue. The column labelled ‘Q < 0.9’ lists the number of (and percentage) of residues with an average occupancy less than 0.9.

Mol	Chain	Analysed	<RSRZ>	#RSRZ>2	OWAB(Å <sup>2</sup> )	Q<0.9
1	A	310/322 (96%)	1.02	35 (11%) <b>5</b> <b>7</b>	13, 19, 40, 96	0
1	B	310/322 (96%)	1.27	54 (17%) <b>1</b> <b>2</b>	13, 21, 46, 63	0
All	All	620/644 (96%)	1.14	89 (14%) <b>2</b> <b>3</b>	13, 20, 43, 96	0

All (89) RSRZ outliers are listed below:

Mol	Chain	Res	Type	RSRZ
1	B	29	VAL	12.0
1	B	275	VAL	10.1
1	B	0	GLY	9.8
1	A	29	VAL	9.8
1	A	33	GLY	9.3
1	A	30	ASN	8.6
1	B	31	ALA	7.9
1	B	309	PHE	6.8
1	B	34	THR	6.6
1	A	31	ALA	6.3
1	A	32	ASP	5.9
1	A	309	PHE	5.5
1	B	276	GLN	5.5
1	B	33	GLY	5.2
1	A	275	VAL	5.0
1	B	279	THR	4.9
1	B	30	ASN	4.8
1	B	299	ARG	4.4
1	B	303	PRO	4.3
1	A	34	THR	4.2
1	B	305	LEU	4.1
1	B	88	TYR	4.0
1	B	239	THR	3.9
1	B	292	GLN	3.9

*Continued on next page...*

*Continued from previous page...*

<b>Mol</b>	<b>Chain</b>	<b>Res</b>	<b>Type</b>	<b>RSRZ</b>
1	B	32	ASP	3.7
1	B	295	GLU	3.7
1	A	28	SER	3.7
1	A	3	ILE	3.6
1	A	35	SER	3.5
1	B	28	SER	3.5
1	B	307	SER	3.5
1	B	300	PRO	3.4
1	B	301	SER	3.4
1	B	160[A]	ILE	3.4
1	B	277	GLY	3.3
1	B	306	SER	3.2
1	B	96	SER	3.2
1	B	92	THR	3.2
1	B	278	SER	3.1
1	B	297	LEU	3.0
1	B	3	ILE	3.0
1	B	182	CYS	3.0
1	B	291	ILE	3.0
1	A	277	GLY	2.9
1	B	257	ILE	2.9
1	B	175	TYR	2.9
1	B	14[A]	GLN	2.9
1	A	296	GLU	2.8
1	B	164	ILE	2.8
1	B	200	LYS	2.8
1	A	299	ARG	2.8
1	B	188	ASP	2.7
1	A	195[A]	THR	2.7
1	B	280	ARG	2.7
1	B	225[A]	ALA	2.6
1	A	278	SER	2.5
1	A	220	GLU	2.5
1	A	292	GLN	2.5
1	A	98	ASP	2.5
1	A	156	LEU	2.5
1	A	0	GLY	2.5
1	B	98	ASP	2.5
1	A	160	ILE	2.4
1	A	104	VAL	2.4
1	B	36	SER	2.4
1	A	38	ASP	2.3

*Continued on next page...*

*Continued from previous page...*

Mol	Chain	Res	Type	RSRZ
1	A	53	LEU	2.3
1	B	97	ASP	2.3
1	A	293	LEU	2.3
1	B	95	LEU	2.3
1	A	37	VAL	2.3
1	B	227	VAL	2.3
1	B	290	ASP	2.3
1	B	136	CYS	2.2
1	A	142	LEU	2.2
1	A	303	PRO	2.2
1	B	296	GLU	2.2
1	A	276	GLN	2.2
1	B	87	ASN	2.1
1	B	61	MET	2.1
1	B	38	ASP	2.1
1	A	50	ALA	2.1
1	A	41	ILE	2.1
1	A	95	LEU	2.1
1	A	236	LYS	2.0
1	B	1[A]	MET	2.0
1	B	294	PRO	2.0
1	A	112	ALA	2.0
1	B	206	VAL	2.0

## 6.2 Non-standard residues in protein, DNA, RNA chains [i](#)

There are no non-standard protein/DNA/RNA residues in this entry.

## 6.3 Carbohydrates [i](#)

There are no monosaccharides in this entry.

## 6.4 Ligands [i](#)

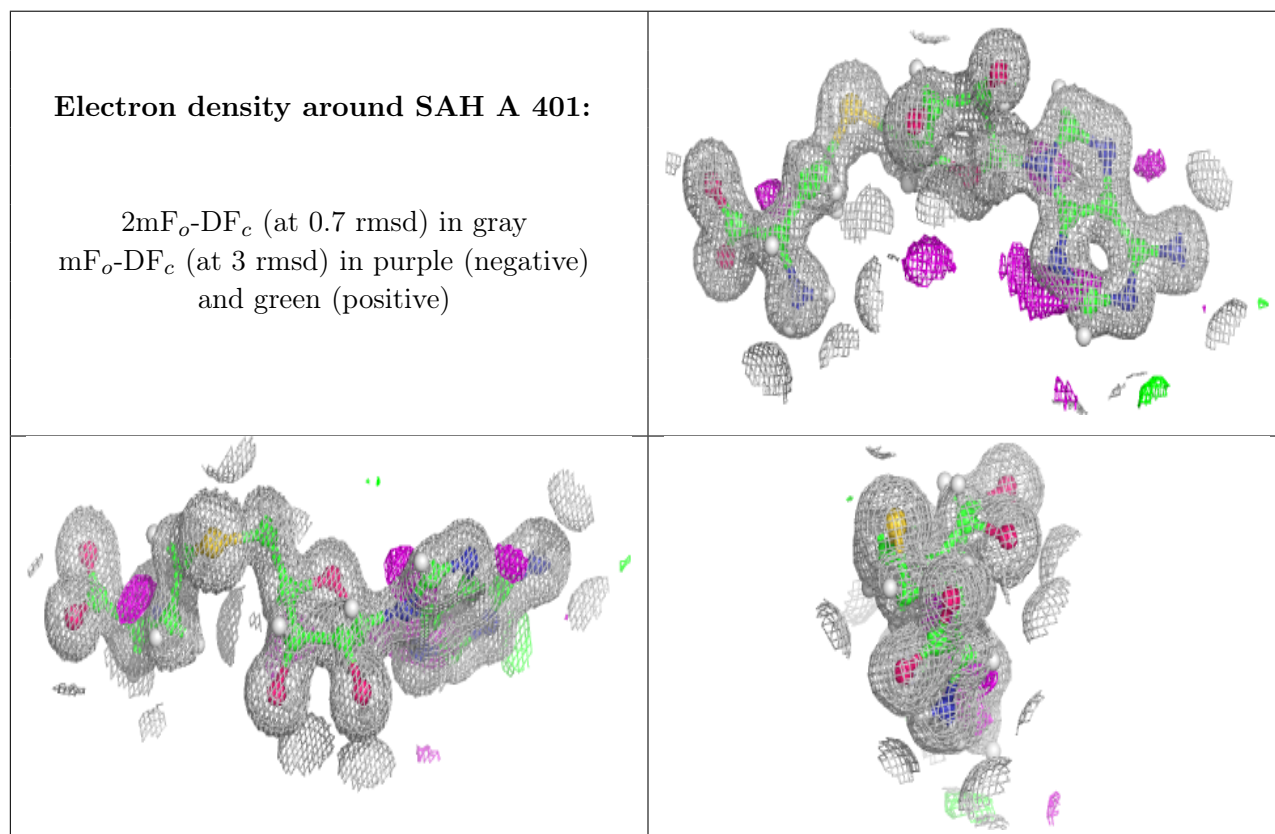
In the following table, the Atoms column lists the number of modelled atoms in the group and the number defined in the chemical component dictionary. The B-factors column lists the minimum, median, 95<sup>th</sup> percentile and maximum values of B factors of atoms in the group. The column labelled 'Q< 0.9' lists the number of atoms with occupancy less than 0.9.

*Continued on next page...*

Continued from previous page...

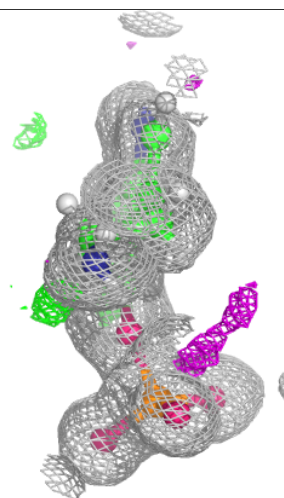
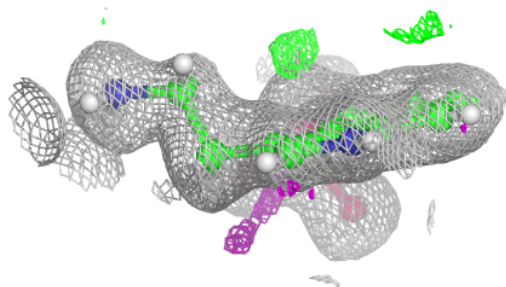
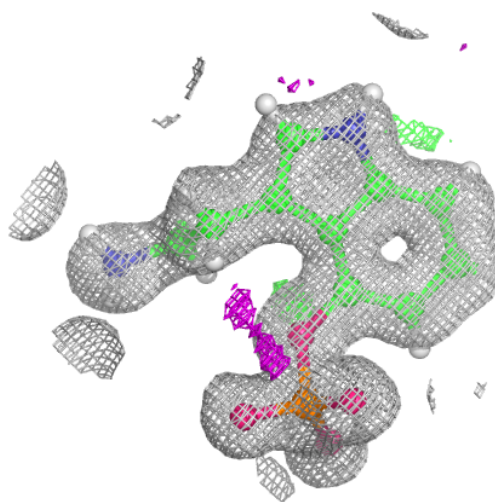
Mol	Type	Chain	Res	Atoms	RSCC	RSR	B-factors( $\text{\AA}^2$ )	Q<0.9
5	MG	A	405	1/1	0.79	0.23	43,43,43,43	0
5	MG	A	404	1/1	0.89	0.35	32,32,32,32	0
5	MG	B	403	1/1	0.94	0.07	24,24,24,24	0
5	MG	A	406	1/1	0.95	0.22	39,39,39,39	0
2	SAH	A	401	26/26	0.96	0.10	13,14,16,18	0
3	XP6	B	402	17/17	0.96	0.08	16,19,24,26	0
3	XP6	A	402	17/17	0.97	0.09	15,16,20,20	0
2	SAH	B	401	26/26	0.97	0.11	14,15,18,19	0
4	CL	A	403	1/1	0.99	0.23	30,30,30,30	0

The following is a graphical depiction of the model fit to experimental electron density of all instances of the Ligand of Interest. In addition, ligands with molecular weight > 250 and outliers as shown on the geometry validation Tables will also be included. Each fit is shown from different orientation to approximate a three-dimensional view.



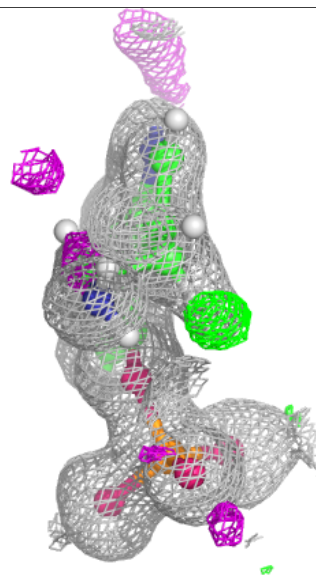
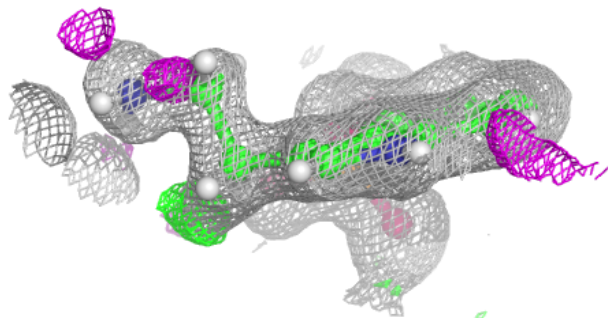
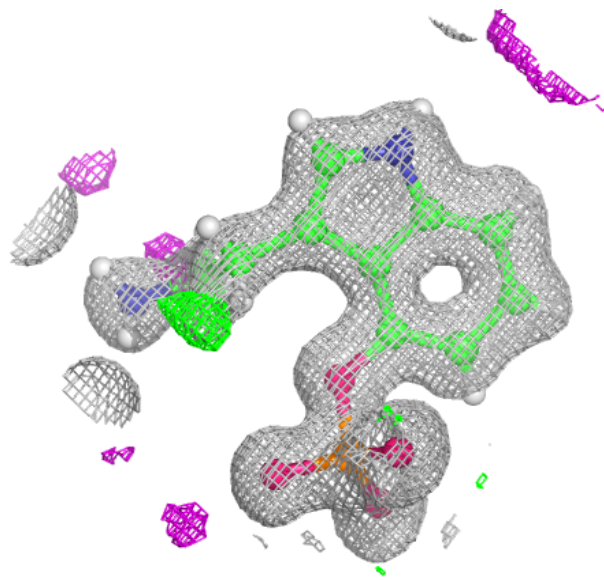
**Electron density around XP6 B 402:**

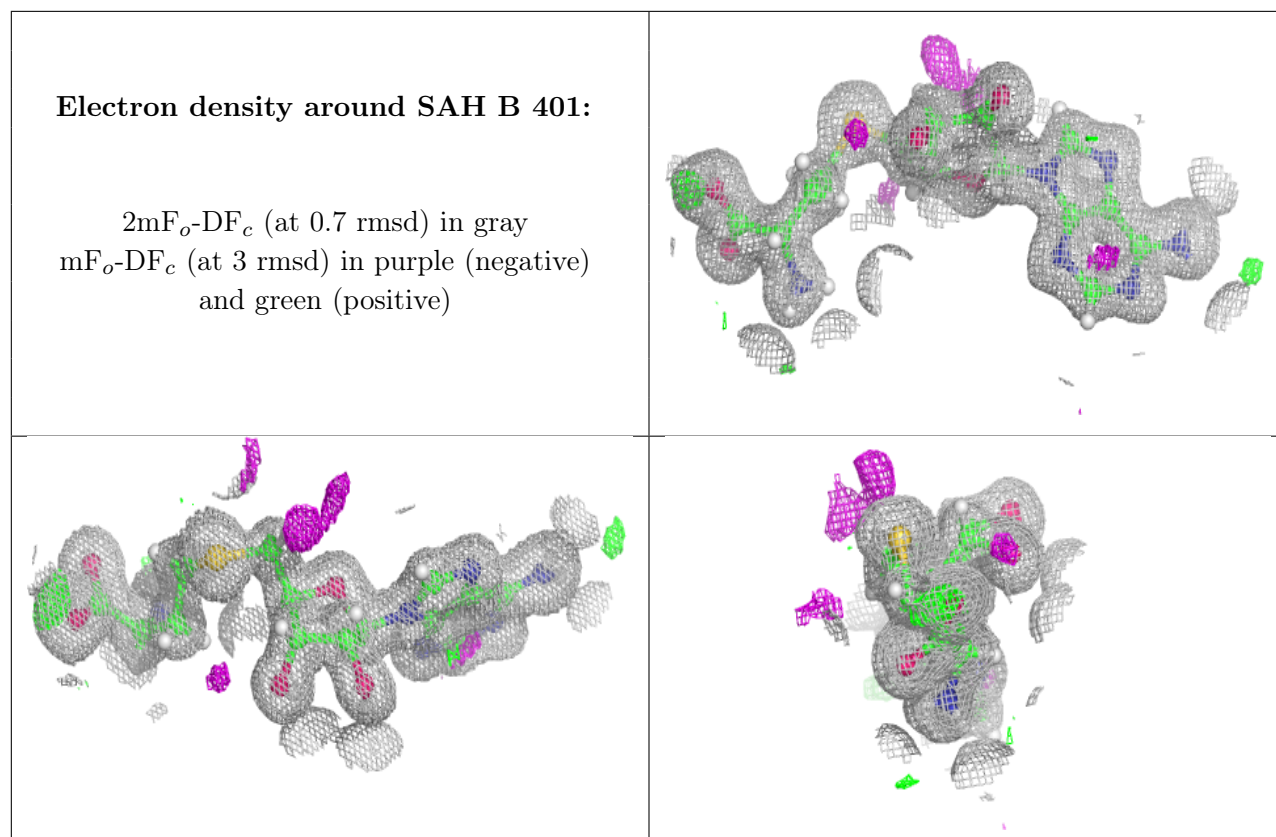
$2mF_o-DF_c$  (at 0.7 rmsd) in gray  
 $mF_o-DF_c$  (at 3 rmsd) in purple (negative)  
and green (positive)



**Electron density around XP6 A 402:**

$2mF_o-DF_c$  (at 0.7 rmsd) in gray  
 $mF_o-DF_c$  (at 3 rmsd) in purple (negative)  
and green (positive)





## 6.5 Other polymers [i](#)

There are no such residues in this entry.