



# Full wwPDB X-ray Structure Validation Report ⓘ

May 14, 2020 – 05:41 pm BST

PDB ID : 3P9Y  
Title : Crystal structure of the Drosophila melanogaster Ssu72-pCTD complex  
Authors : Werner-Allen, J.W.; Zhou, P.  
Deposited on : 2010-10-18  
Resolution : 2.10 Å(reported)

This is a Full wwPDB X-ray Structure Validation Report for a publicly released PDB entry.

We welcome your comments at [validation@mail.wwpdb.org](mailto:validation@mail.wwpdb.org)

A user guide is available at

<https://www.wwpdb.org/validation/2017/XrayValidationReportHelp>

with specific help available everywhere you see the ⓘ symbol.

---

The following versions of software and data (see [references ⓘ](#)) were used in the production of this report:

MolProbity : 4.02b-467  
Mogul : 1.8.5 (274361), CSD as541be (2020)  
Xtriage (Phenix) : 1.13  
EDS : 2.11  
Percentile statistics : 20191225.v01 (using entries in the PDB archive December 25th 2019)  
Refmac : 5.8.0158  
CCP4 : 7.0.044 (Gargrove)  
Ideal geometry (proteins) : Engh & Huber (2001)  
Ideal geometry (DNA, RNA) : Parkinson et al. (1996)  
Validation Pipeline (wwPDB-VP) : 2.11

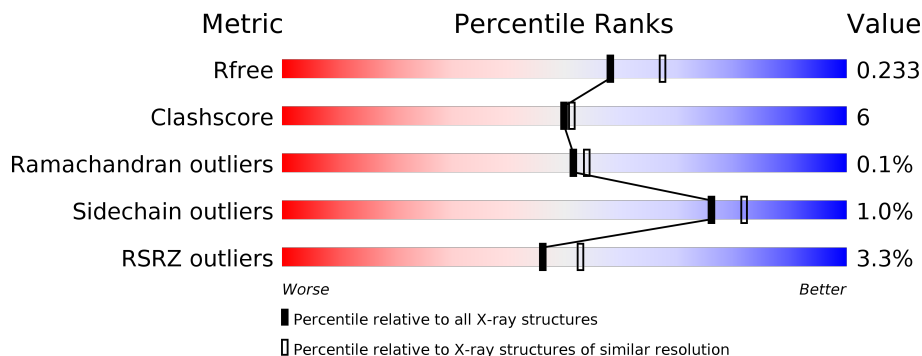
# 1 Overall quality at a glance

The following experimental techniques were used to determine the structure:

*X-RAY DIFFRACTION*

The reported resolution of this entry is 2.10 Å.

Percentile scores (ranging between 0-100) for global validation metrics of the entry are shown in the following graphic. The table shows the number of entries on which the scores are based.





Metric	Whole archive (#Entries)	Similar resolution (#Entries, resolution range(Å))
$R_{free}$	130704	5197 (2.10-2.10)
Clashscore	141614	5710 (2.10-2.10)
Ramachandran outliers	138981	5647 (2.10-2.10)
Sidechain outliers	138945	5648 (2.10-2.10)
RSRZ outliers	127900	5083 (2.10-2.10)

The table below summarises the geometric issues observed across the polymeric chains and their fit to the electron density. The red, orange, yellow and green segments on the lower bar indicate the fraction of residues that contain outliers for  $\geq 3$ , 2, 1 and 0 types of geometric quality criteria respectively. A grey segment represents the fraction of residues that are not modelled. The numeric value for each fraction is indicated below the corresponding segment, with a dot representing fractions  $\leq 5\%$ . The upper red bar (where present) indicates the fraction of residues that have poor fit to the electron density. The numeric value is given above the bar.

Mol	Chain	Length	Quality of chain
1	A	198	 86% 14%
1	B	198	 87% 13% 6%
1	C	198	 91% 6% 2%
1	D	198	 84% 13% 5%
2	E	7	 86% 14%
2	F	7	 86% 14% 14%

*Continued on next page...*

*Continued from previous page...*

Mol	Chain	Length	Quality of chain	
2	G	7	 71%	29%
2	H	7	 71%	29%

The following table lists non-polymeric compounds, carbohydrate monomers and non-standard residues in protein, DNA, RNA chains that are outliers for geometric or electron-density-fit criteria:

Mol	Type	Chain	Res	Chirality	Geometry	Clashes	Electron density
2	N7P	G	3	X	-	-	-

## 2 Entry composition

There are 5 unique types of molecules in this entry. The entry contains 13775 atoms, of which 6490 are hydrogens and 0 are deuteriums.

In the tables below, the ZeroOcc column contains the number of atoms modelled with zero occupancy, the AltConf column contains the number of residues with at least one atom in alternate conformation and the Trace column contains the number of residues modelled with at most 2 atoms.

- Molecule 1 is a protein called CG14216.

Mol	Chain	Residues	Atoms						ZeroOcc	AltConf	Trace
			Total	C	H	N	O	S			
1	A	198	3198	1008	1586	279	312	13	0	0	0
1	B	198	3198	1008	1586	279	312	13	0	0	0
1	C	193	3125	987	1551	272	303	12	0	0	0
1	D	191	3102	979	1540	270	301	12	0	0	0

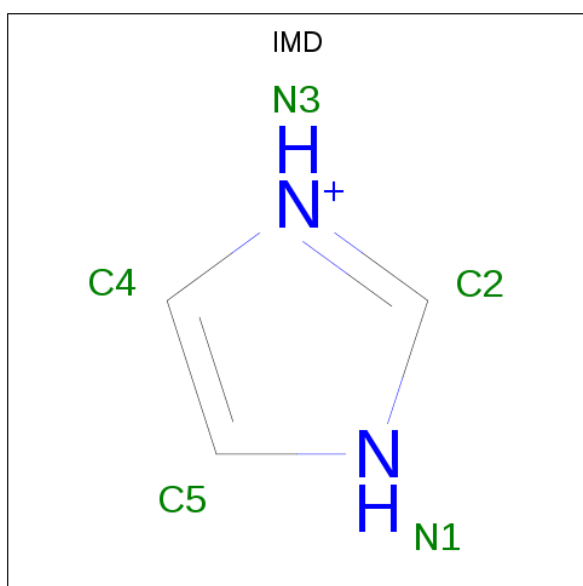
There are 20 discrepancies between the modelled and reference sequences:

Chain	Residue	Modelled	Actual	Comment	Reference
A	-2	GLY	-	EXPRESSION TAG	UNP Q9VWE4
A	-1	SER	-	EXPRESSION TAG	UNP Q9VWE4
A	0	HIS	-	EXPRESSION TAG	UNP Q9VWE4
A	13	ASP	CYS	ENGINEERED MUTATION	UNP Q9VWE4
A	144	ASN	ASP	ENGINEERED MUTATION	UNP Q9VWE4
B	-2	GLY	-	EXPRESSION TAG	UNP Q9VWE4
B	-1	SER	-	EXPRESSION TAG	UNP Q9VWE4
B	0	HIS	-	EXPRESSION TAG	UNP Q9VWE4
B	13	ASP	CYS	ENGINEERED MUTATION	UNP Q9VWE4
B	144	ASN	ASP	ENGINEERED MUTATION	UNP Q9VWE4
C	-2	GLY	-	EXPRESSION TAG	UNP Q9VWE4
C	-1	SER	-	EXPRESSION TAG	UNP Q9VWE4
C	0	HIS	-	EXPRESSION TAG	UNP Q9VWE4
C	13	ASP	CYS	ENGINEERED MUTATION	UNP Q9VWE4
C	144	ASN	ASP	ENGINEERED MUTATION	UNP Q9VWE4
D	-2	GLY	-	EXPRESSION TAG	UNP Q9VWE4
D	-1	SER	-	EXPRESSION TAG	UNP Q9VWE4
D	0	HIS	-	EXPRESSION TAG	UNP Q9VWE4
D	13	ASP	CYS	ENGINEERED MUTATION	UNP Q9VWE4
D	144	ASN	ASP	ENGINEERED MUTATION	UNP Q9VWE4

- Molecule 2 is a protein called pSer5 CTD peptide.

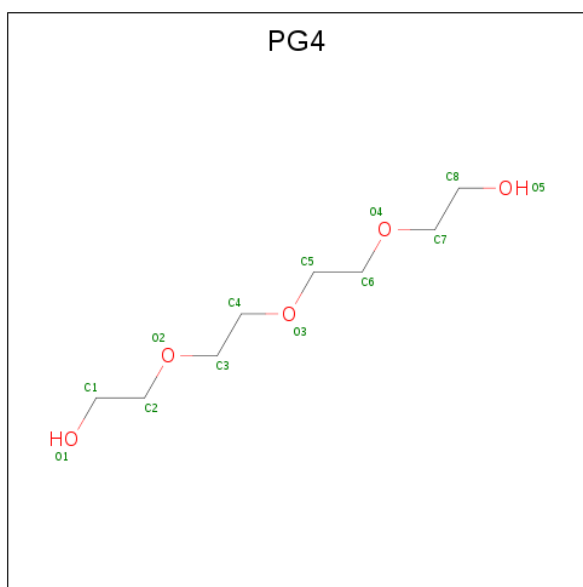
Mol	Chain	Residues	Atoms					ZeroOcc	AltConf	Trace	
			Total	C	H	N	O				P
2	E	7	Total 107	C 34	H 48	N 8	O 16	P 1	0	0	0
2	F	7	Total 108	C 34	H 49	N 8	O 16	P 1	0	0	0
2	G	7	Total 107	C 34	H 48	N 8	O 16	P 1	0	0	0
2	H	7	Total 107	C 34	H 48	N 8	O 16	P 1	0	0	0

- Molecule 3 is IMIDAZOLE (three-letter code: IMD) (formula: C<sub>3</sub>H<sub>5</sub>N<sub>2</sub>).



Mol	Chain	Residues	Atoms			ZeroOcc	AltConf	
			Total	C	H			N
3	A	1	Total 10	C 3	H 5	N 2	0	0
3	A	1	Total 10	C 3	H 5	N 2	0	0
3	B	1	Total 10	C 3	H 5	N 2	0	0
3	C	1	Total 10	C 3	H 5	N 2	0	0

- Molecule 4 is TETRAETHYLENE GLYCOL (three-letter code: PG4) (formula: C<sub>8</sub>H<sub>18</sub>O<sub>5</sub>).



Mol	Chain	Residues	Atoms				ZeroOcc	AltConf
			Total	C	H	O		
4	A	1	25	7	14	4	0	0

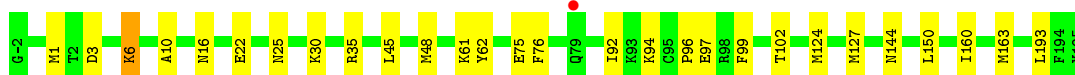
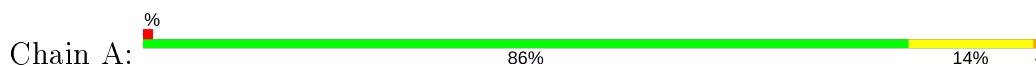
- Molecule 5 is water.

Mol	Chain	Residues	Atoms		ZeroOcc	AltConf
5	A	196	Total	O	0	0
			196	196		
5	B	165	Total	O	0	0
			165	165		
5	C	158	Total	O	0	0
			158	158		
5	D	101	Total	O	0	0
			101	101		
5	E	10	Total	O	0	0
			10	10		
5	F	8	Total	O	0	0
			8	8		
5	G	11	Total	O	0	0
			11	11		
5	H	9	Total	O	0	0
			9	9		

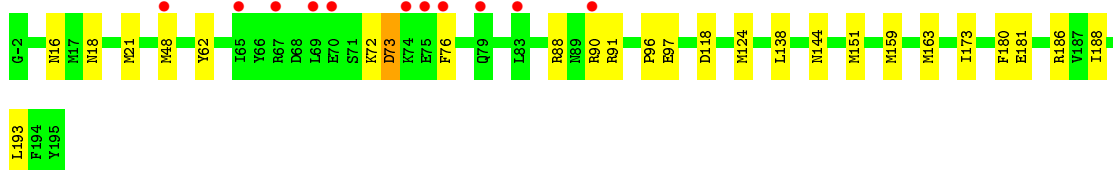
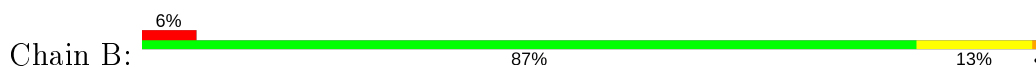
### 3 Residue-property plots [i](#)

These plots are drawn for all protein, RNA and DNA chains in the entry. The first graphic for a chain summarises the proportions of the various outlier classes displayed in the second graphic. The second graphic shows the sequence view annotated by issues in geometry and electron density. Residues are color-coded according to the number of geometric quality criteria for which they contain at least one outlier: green = 0, yellow = 1, orange = 2 and red = 3 or more. A red dot above a residue indicates a poor fit to the electron density ( $RSRZ > 2$ ). Stretches of 2 or more consecutive residues without any outlier are shown as a green connector. Residues present in the sample, but not in the model, are shown in grey.

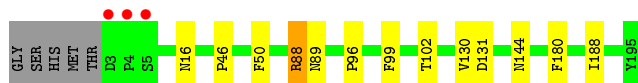
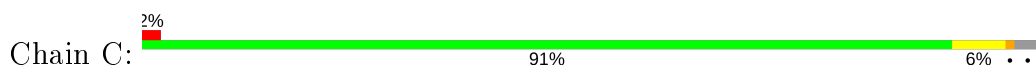
- Molecule 1: CG14216



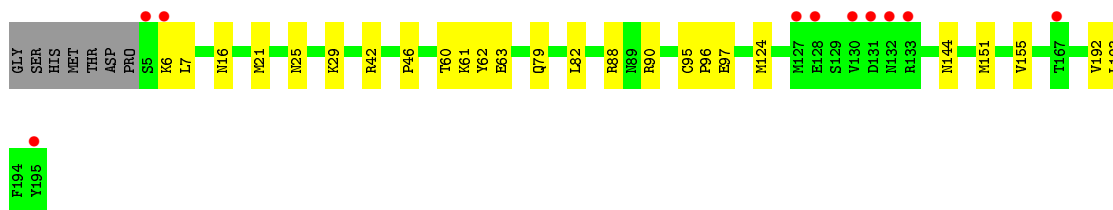
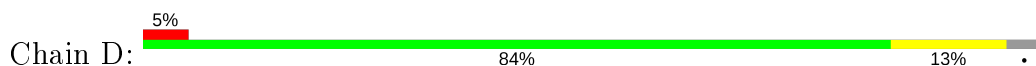
- Molecule 1: CG14216



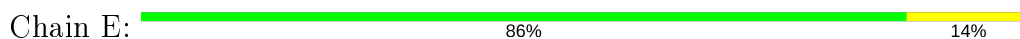
- Molecule 1: CG14216



- Molecule 1: CG14216

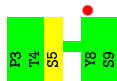
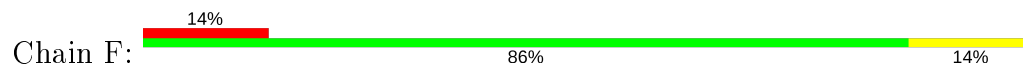


- Molecule 2: pSer5 CTD peptide

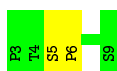




- Molecule 2: pSer5 CTD peptide



- Molecule 2: pSer5 CTD peptide



- Molecule 2: pSer5 CTD peptide





## 4 Data and refinement statistics

Property	Value	Source
Space group	H 3	Depositor
Cell constants a, b, c, $\alpha$ , $\beta$ , $\gamma$	157.46Å 157.46Å 118.80Å 90.00° 90.00° 120.00°	Depositor
Resolution (Å)	36.00 – 2.10 36.04 – 2.10	Depositor EDS
% Data completeness (in resolution range)	93.6 (36.00-2.10) 93.6 (36.04-2.10)	Depositor EDS
$R_{merge}$	0.06	Depositor
$R_{sym}$	(Not available)	Depositor
$\langle I/\sigma(I) \rangle$ <sup>1</sup>	3.71 (at 2.10Å)	Xtrriage
Refinement program	PHENIX (phenix.refine: 1.5_2)	Depositor
R, $R_{free}$	0.209 , 0.241 0.204 , 0.233	Depositor DCC
$R_{free}$ test set	3235 reflections (5.06%)	wwPDB-VP
Wilson B-factor (Å <sup>2</sup> )	24.6	Xtrriage
Anisotropy	0.154	Xtrriage
Bulk solvent $k_{sol}$ (e/Å <sup>3</sup> ), $B_{sol}$ (Å <sup>2</sup> )	0.40 , 45.9	EDS
L-test for twinning <sup>2</sup>	$\langle  L  \rangle = 0.50$ , $\langle L^2 \rangle = 0.33$	Xtrriage
Estimated twinning fraction	0.016 for h,-h-k,-l	Xtrriage
$F_o, F_c$ correlation	0.94	EDS
Total number of atoms	13775	wwPDB-VP
Average B, all atoms (Å <sup>2</sup> )	36.0	wwPDB-VP

Xtrriage's analysis on translational NCS is as follows: *The largest off-origin peak in the Patterson function is 3.43% of the height of the origin peak. No significant pseudotranslation is detected.*

<sup>1</sup>Intensities estimated from amplitudes.

<sup>2</sup>Theoretical values of  $\langle |L| \rangle$ ,  $\langle L^2 \rangle$  for acentric reflections are 0.5, 0.333 respectively for untwinned datasets, and 0.375, 0.2 for perfectly twinned datasets.

## 5 Model quality

### 5.1 Standard geometry

Bond lengths and bond angles in the following residue types are not validated in this section: PG4, SET, N7P, IMD, SEP

The Z score for a bond length (or angle) is the number of standard deviations the observed value is removed from the expected value. A bond length (or angle) with  $|Z| > 5$  is considered an outlier worth inspection. RMSZ is the root-mean-square of all Z scores of the bond lengths (or angles).

Mol	Chain	Bond lengths		Bond angles	
		RMSZ	# Z  >5	RMSZ	# Z  >5
1	A	0.28	0/1639	0.42	0/2203
1	B	0.26	0/1639	0.43	0/2203
1	C	0.25	0/1600	0.40	0/2151
1	D	0.24	0/1587	0.39	0/2132
2	E	0.21	0/32	0.38	0/41
2	F	0.28	0/32	0.42	0/41
2	G	0.28	0/32	0.52	0/41
2	H	0.29	0/32	0.44	0/41
All	All	0.26	0/6593	0.41	0/8853

Chiral center outliers are detected by calculating the chiral volume of a chiral center and verifying if the center is modelled as a planar moiety or with the opposite hand. A planarity outlier is detected by checking planarity of atoms in a peptide group, atoms in a mainchain group or atoms of a sidechain that are expected to be planar.

Mol	Chain	#Chirality outliers	#Planarity outliers
2	G	1	0

There are no bond length outliers.

There are no bond angle outliers.

All (1) chirality outliers are listed below:

Mol	Chain	Res	Type	Atom
2	G	3	N7P	CA

There are no planarity outliers.

## 5.2 Too-close contacts [\(i\)](#)

In the following table, the Non-H and H(model) columns list the number of non-hydrogen atoms and hydrogen atoms in the chain respectively. The H(added) column lists the number of hydrogen atoms added and optimized by MolProbity. The Clashes column lists the number of clashes within the asymmetric unit, whereas Symm-Clashes lists symmetry related clashes.

Mol	Chain	Non-H	H(model)	H(added)	Clashes	Symm-Clashes
1	A	1612	1586	1580	24	0
1	B	1612	1586	1580	21	0
1	C	1574	1551	1544	11	0
1	D	1562	1540	1535	19	0
2	E	59	48	36	2	0
2	F	59	49	37	3	0
2	G	59	48	35	2	0
2	H	59	48	35	4	0
3	A	10	10	10	1	0
3	B	5	5	5	0	0
3	C	5	5	5	0	0
4	A	11	14	12	0	0
5	A	196	0	0	3	0
5	B	165	0	0	0	0
5	C	158	0	0	0	0
5	D	101	0	0	0	0
5	E	10	0	0	0	0
5	F	8	0	0	0	0
5	G	11	0	0	0	0
5	H	9	0	0	0	0
All	All	7285	6490	6414	75	0

The all-atom clashscore is defined as the number of clashes found per 1000 atoms (including hydrogen atoms). The all-atom clashscore for this structure is 6.

All (75) close contacts within the same asymmetric unit are listed below, sorted by their clash magnitude.

Atom-1	Atom-2	Interatomic distance (Å)	Clash overlap (Å)
1:C:88:ARG:C	1:C:88:ARG:HD2	2.17	0.65
1:C:16:ASN:HD22	1:C:96:PRO:HA	1.61	0.65
1:A:1:MET:HE3	1:A:30:LYS:HA	1.80	0.63
1:C:46:PRO:HG3	2:G:6:PRO:O	2.03	0.59
1:A:16:ASN:HD22	1:A:96:PRO:HA	1.68	0.58
1:A:124:MET:HB2	1:A:193:LEU:HD13	1.88	0.56
1:D:124:MET:HB2	1:D:193:LEU:HD23	1.88	0.55

*Continued on next page...*

*Continued from previous page...*

Atom-1	Atom-2	Interatomic distance (Å)	Clash overlap (Å)
1:B:90:ARG:HD3	1:B:90:ARG:O	2.07	0.55
1:B:16:ASN:HD22	1:B:97:GLU:H	1.56	0.54
1:A:16:ASN:HD22	1:A:97:GLU:H	1.56	0.54
1:A:124:MET:CB	1:A:193:LEU:HD13	2.37	0.54
1:D:16:ASN:ND2	1:D:96:PRO:HA	2.23	0.53
1:D:82:LEU:HD21	2:H:6:PRO:HD2	1.89	0.53
1:D:46:PRO:HG3	2:H:6:PRO:O	2.10	0.52
1:B:180:PHE:CD2	1:B:188:ILE:HD11	2.46	0.51
3:A:196:IMD:H4	5:A:607:HOH:O	2.10	0.51
1:A:99:PHE:O	1:A:102:THR:HG22	2.11	0.51
1:D:16:ASN:HD22	1:D:96:PRO:HA	1.75	0.51
1:A:3:ASP:O	1:A:6:LYS:HD2	2.11	0.50
1:B:151:MET:HE2	1:B:151:MET:HA	1.93	0.50
1:D:25:ASN:ND2	1:D:29:LYS:HE2	2.27	0.50
1:C:144:ASN:OD1	2:G:5:SEP:HB2	2.11	0.49
1:D:144:ASN:OD1	2:H:5:SEP:HB2	2.12	0.49
1:B:88:ARG:HH11	1:B:88:ARG:HG2	1.76	0.49
1:A:6:LYS:HA	1:A:6:LYS:CE	2.42	0.49
1:B:124:MET:HB2	1:B:193:LEU:HD22	1.93	0.49
1:B:118:ASP:HB3	1:C:50:PHE:CZ	2.48	0.49
1:D:60:THR:O	1:D:96:PRO:HD2	2.12	0.49
1:C:180:PHE:CD2	1:C:188:ILE:HD11	2.47	0.48
1:A:16:ASN:ND2	1:A:96:PRO:HA	2.28	0.48
1:B:159:MET:O	1:B:163:MET:HG2	2.14	0.48
1:A:6:LYS:HE3	5:A:377:HOH:O	2.15	0.47
1:C:16:ASN:ND2	1:C:96:PRO:HA	2.28	0.47
1:B:124:MET:CB	1:B:193:LEU:HD22	2.45	0.46
1:D:6:LYS:HE3	1:D:6:LYS:HA	1.96	0.46
1:B:144:ASN:OD1	2:F:5:SEP:HB2	2.15	0.46
1:B:144:ASN:HD21	2:F:5:SEP:HB2	1.80	0.46
1:D:16:ASN:HD22	1:D:97:GLU:H	1.64	0.45
1:D:144:ASN:HD21	2:H:5:SEP:HB2	1.81	0.45
1:A:16:ASN:ND2	1:A:97:GLU:H	2.15	0.45
1:D:21:MET:HB3	1:D:88:ARG:HH12	1.81	0.45
1:A:144:ASN:OD1	2:E:5:SEP:HB2	2.17	0.44
1:B:138:LEU:HD11	1:B:163:MET:HE1	1.97	0.44
1:D:16:ASN:ND2	1:D:97:GLU:H	2.15	0.44
1:A:22:GLU:HG2	1:A:150:LEU:HA	2.01	0.43
1:A:61:LYS:HE2	1:A:94:LYS:HE3	2.00	0.43
1:C:99:PHE:O	1:C:102:THR:HG22	2.17	0.43
1:D:63:GLU:HB3	1:D:90:ARG:HD3	2.01	0.43

*Continued on next page...*

Continued from previous page...

Atom-1	Atom-2	Interatomic distance (Å)	Clash overlap (Å)
1:B:21:MET:HB3	1:B:88:ARG:HH12	1.83	0.43
1:B:138:LEU:HD11	1:B:163:MET:CE	2.49	0.42
1:B:163:MET:HE1	1:B:173:ILE:HD11	2.01	0.42
1:B:62:TYR:CE1	1:B:96:PRO:HG3	2.54	0.42
1:D:62:TYR:CE1	1:D:96:PRO:HD3	2.54	0.42
1:A:127:MET:HG3	5:A:593:HOH:O	2.18	0.42
1:C:88:ARG:CD	1:C:88:ARG:C	2.87	0.42
1:C:88:ARG:NH1	1:C:89:ASN:OD1	2.53	0.42
1:A:48:MET:HG2	1:A:76:PHE:CE2	2.55	0.42
1:A:160:ILE:HD13	1:A:163:MET:CE	2.50	0.41
1:A:61:LYS:HE2	1:A:94:LYS:NZ	2.36	0.41
1:D:192:VAL:C	1:D:193:LEU:HD12	2.40	0.41
1:C:130:VAL:HG23	1:C:131:ASP:N	2.35	0.41
1:A:45:LEU:HD12	1:A:45:LEU:N	2.35	0.41
1:D:61:LYS:HA	1:D:95:CYS:HB3	2.02	0.41
1:A:25:ASN:HB2	1:A:92:ILE:HD11	2.02	0.41
1:B:72:LYS:O	1:B:73:ASP:HB2	2.21	0.41
1:A:10:ALA:HA	1:A:35:ARG:O	2.20	0.41
1:B:181:GLU:HG2	1:B:186:ARG:O	2.21	0.41
1:A:62:TYR:CE1	1:A:96:PRO:HD3	2.56	0.41
1:B:48:MET:HG2	1:B:76:PHE:CE2	2.56	0.41
1:A:144:ASN:HD21	2:E:5:SEP:HB2	1.84	0.41
1:B:16:ASN:ND2	1:B:96:PRO:HA	2.36	0.41
1:D:124:MET:CB	1:D:193:LEU:HD23	2.50	0.41
1:D:151:MET:O	1:D:155:VAL:HG23	2.22	0.40
1:A:1:MET:CE	1:A:30:LYS:HA	2.48	0.40
1:B:18:ASN:CB	2:F:5:SEP:HB3	2.51	0.40

There are no symmetry-related clashes.

## 5.3 Torsion angles [i](#)

### 5.3.1 Protein backbone [i](#)

In the following table, the Percentiles column shows the percent Ramachandran outliers of the chain as a percentile score with respect to all X-ray entries followed by that with respect to entries of similar resolution.

The Analysed column shows the number of residues for which the backbone conformation was analysed, and the total number of residues.

Mol	Chain	Analysed	Favoured	Allowed	Outliers	Percentiles	
1	A	196/198 (99%)	189 (96%)	7 (4%)	0	100	100
1	B	196/198 (99%)	191 (97%)	4 (2%)	1 (0%)	29	26
1	C	191/198 (96%)	186 (97%)	5 (3%)	0	100	100
1	D	189/198 (96%)	183 (97%)	6 (3%)	0	100	100
2	E	4/7 (57%)	4 (100%)	0	0	100	100
2	F	4/7 (57%)	4 (100%)	0	0	100	100
2	G	4/7 (57%)	4 (100%)	0	0	100	100
2	H	4/7 (57%)	4 (100%)	0	0	100	100
All	All	788/820 (96%)	765 (97%)	22 (3%)	1 (0%)	51	54

All (1) Ramachandran outliers are listed below:

Mol	Chain	Res	Type
1	B	73	ASP

### 5.3.2 Protein sidechains [i](#)

In the following table, the Percentiles column shows the percent sidechain outliers of the chain as a percentile score with respect to all X-ray entries followed by that with respect to entries of similar resolution.

The Analysed column shows the number of residues for which the sidechain conformation was analysed, and the total number of residues.

Mol	Chain	Analysed	Rotameric	Outliers	Percentiles	
1	A	181/181 (100%)	179 (99%)	2 (1%)	73	79
1	B	181/181 (100%)	180 (99%)	1 (1%)	86	90
1	C	176/181 (97%)	175 (99%)	1 (1%)	86	90
1	D	175/181 (97%)	172 (98%)	3 (2%)	60	67
2	E	4/4 (100%)	4 (100%)	0	100	100
2	F	4/4 (100%)	4 (100%)	0	100	100
2	G	4/4 (100%)	4 (100%)	0	100	100
2	H	4/4 (100%)	4 (100%)	0	100	100
All	All	729/740 (98%)	722 (99%)	7 (1%)	76	82

All (7) residues with a non-rotameric sidechain are listed below:

Mol	Chain	Res	Type
1	A	6	LYS
1	A	75	GLU
1	B	91	ARG
1	C	88	ARG
1	D	7	LEU
1	D	42	ARG
1	D	79	GLN

Some sidechains can be flipped to improve hydrogen bonding and reduce clashes. All (8) such sidechains are listed below:

Mol	Chain	Res	Type
1	A	0	HIS
1	A	16	ASN
1	A	25	ASN
1	B	16	ASN
1	B	54	ASN
1	C	16	ASN
1	D	16	ASN
1	D	25	ASN

### 5.3.3 RNA [i](#)

There are no RNA molecules in this entry.

## 5.4 Non-standard residues in protein, DNA, RNA chains [i](#)

12 non-standard protein/DNA/RNA residues are modelled in this entry.

In the following table, the Counts columns list the number of bonds (or angles) for which Mogul statistics could be retrieved, the number of bonds (or angles) that are observed in the model and the number of bonds (or angles) that are defined in the Chemical Component Dictionary. The Link column lists molecule types, if any, to which the group is linked. The Z score for a bond length (or angle) is the number of standard deviations the observed value is removed from the expected value. A bond length (or angle) with  $|Z| > 2$  is considered an outlier worth inspection. RMSZ is the root-mean-square of all Z scores of the bond lengths (or angles).

Mol	Type	Chain	Res	Link	Bond lengths			Bond angles		
					Counts	RMSZ	# Z  > 2	Counts	RMSZ	# Z  > 2
2	SEP	G	5	2	8,9,10	1.62	3 (37%)	8,12,14	1.44	2 (25%)
2	SET	E	9	2	6,6,6	1.85	1 (16%)	6,7,7	1.42	0
2	SET	G	9	2	6,6,6	1.86	1 (16%)	6,7,7	1.36	0

Mol	Type	Chain	Res	Link	Bond lengths			Bond angles		
					Counts	RMSZ	# Z  > 2	Counts	RMSZ	# Z  > 2
2	SET	H	9	2	6,6,6	1.86	1 (16%)	6,7,7	1.30	0
2	N7P	E	3	2	9,10,11	2.21	2 (22%)	9,13,15	3.33	4 (44%)
2	N7P	G	3	2	9,10,11	2.18	2 (22%)	9,13,15	3.15	3 (33%)
2	N7P	H	3	2	9,10,11	2.16	2 (22%)	9,13,15	3.40	3 (33%)
2	N7P	F	3	2	9,10,11	2.24	2 (22%)	9,13,15	3.17	4 (44%)
2	SET	F	9	2	6,6,6	1.84	1 (16%)	6,7,7	1.48	1 (16%)
2	SEP	H	5	2	8,9,10	1.56	2 (25%)	8,12,14	1.64	1 (12%)
2	SEP	E	5	2	8,9,10	1.58	2 (25%)	8,12,14	1.94	1 (12%)
2	SEP	F	5	2	8,9,10	1.57	2 (25%)	8,12,14	1.43	1 (12%)

In the following table, the Chirals column lists the number of chiral outliers, the number of chiral centers analysed, the number of these observed in the model and the number defined in the Chemical Component Dictionary. Similar counts are reported in the Torsion and Rings columns. '-' means no outliers of that kind were identified.

Mol	Type	Chain	Res	Link	Chirals	Torsions	Rings
2	SEP	G	5	2	-	4/5/8/10	-
2	SET	E	9	2	-	2/6/6/6	-
2	SET	G	9	2	-	6/6/6/6	-
2	SET	H	9	2	-	4/6/6/6	-
2	N7P	E	3	2	-	0/4/16/18	0/1/1/1
2	N7P	G	3	2	1/1/3/4	0/4/16/18	0/1/1/1
2	N7P	H	3	2	-	0/4/16/18	0/1/1/1
2	N7P	F	3	2	-	0/4/16/18	0/1/1/1
2	SET	F	9	2	-	1/6/6/6	-
2	SEP	H	5	2	-	3/5/8/10	-
2	SEP	E	5	2	-	4/5/8/10	-
2	SEP	F	5	2	-	4/5/8/10	-

All (21) bond length outliers are listed below:

Mol	Chain	Res	Type	Atoms	Z	Observed(Å)	Ideal(Å)
2	F	3	N7P	C1-N	5.75	1.43	1.35
2	H	3	N7P	C1-N	5.61	1.43	1.35
2	E	3	N7P	C1-N	5.56	1.43	1.35
2	G	3	N7P	C1-N	5.45	1.43	1.35
2	E	9	SET	C-NT	4.20	1.43	1.32
2	F	9	SET	C-NT	4.19	1.43	1.32
2	H	9	SET	C-NT	4.18	1.43	1.32

*Continued on next page...*



*Continued from previous page...*

Mol	Chain	Res	Type	Atoms	Z	Observed(Å)	Ideal(Å)
2	G	9	SET	C-NT	4.17	1.43	1.32
2	G	5	SEP	CB-CA	2.74	1.60	1.52
2	F	5	SEP	CB-CA	2.70	1.60	1.52
2	G	3	N7P	CA-N	2.68	1.50	1.48
2	E	5	SEP	CB-CA	2.68	1.60	1.52
2	H	5	SEP	CB-CA	2.51	1.59	1.52
2	E	3	N7P	CA-N	2.51	1.50	1.48
2	F	3	N7P	CA-N	2.40	1.50	1.48
2	H	3	N7P	CA-N	2.06	1.49	1.48
2	E	5	SEP	CA-N	2.04	1.54	1.48
2	H	5	SEP	CA-N	2.02	1.54	1.48
2	G	5	SEP	OG-CB	-2.02	1.37	1.44
2	F	5	SEP	CA-N	2.02	1.54	1.48
2	G	5	SEP	CA-N	2.00	1.54	1.48

All (20) bond angle outliers are listed below:

Mol	Chain	Res	Type	Atoms	Z	Observed(°)	Ideal(°)
2	H	3	N7P	CB-CA-C	9.01	125.11	112.70
2	E	3	N7P	CB-CA-C	8.85	124.88	112.70
2	G	3	N7P	CB-CA-C	8.31	124.14	112.70
2	F	3	N7P	CB-CA-C	8.29	124.12	112.70
2	E	5	SEP	OG-CB-CA	5.20	113.21	108.14
2	H	5	SEP	OG-CB-CA	3.97	112.01	108.14
2	F	5	SEP	OG-CB-CA	3.64	111.69	108.14
2	E	3	N7P	CG-CD-N	3.05	108.60	103.25
2	G	5	SEP	OG-CB-CA	2.95	111.01	108.14
2	H	3	N7P	C2-C1-N	2.91	120.91	117.87
2	G	3	N7P	CG-CD-N	2.61	107.83	103.25
2	G	5	SEP	OG-P-O1P	2.52	113.54	106.47
2	F	3	N7P	CA-N-C1	2.43	127.21	121.26
2	G	3	N7P	C2-C1-N	2.30	120.28	117.87
2	E	3	N7P	C2-C1-N	2.23	120.21	117.87
2	H	3	N7P	CG-CD-N	2.17	107.05	103.25
2	F	3	N7P	C2-C1-N	2.15	120.12	117.87
2	F	3	N7P	CG-CB-CA	-2.13	101.14	105.53
2	F	9	SET	CB-CA-C	2.06	115.17	110.18
2	E	3	N7P	CA-N-C1	2.03	126.24	121.26

All (1) chirality outliers are listed below:

Mol	Chain	Res	Type	Atom
2	G	3	N7P	CA

All (28) torsion outliers are listed below:

Mol	Chain	Res	Type	Atoms
2	G	5	SEP	N-CA-CB-OG
2	G	5	SEP	CB-OG-P-O2P
2	G	5	SEP	CB-OG-P-O3P
2	G	9	SET	NT-C-CA-N
2	G	9	SET	O-C-CA-N
2	H	9	SET	NT-C-CA-N
2	H	9	SET	O-C-CA-N
2	H	5	SEP	N-CA-CB-OG
2	H	5	SEP	CB-OG-P-O2P
2	H	5	SEP	CB-OG-P-O3P
2	E	5	SEP	N-CA-CB-OG
2	E	5	SEP	CB-OG-P-O2P
2	E	5	SEP	CB-OG-P-O3P
2	F	5	SEP	N-CA-CB-OG
2	F	5	SEP	CB-OG-P-O1P
2	F	5	SEP	CB-OG-P-O2P
2	F	5	SEP	CB-OG-P-O3P
2	E	9	SET	C-CA-CB-OG
2	G	9	SET	C-CA-CB-OG
2	H	9	SET	C-CA-CB-OG
2	F	9	SET	C-CA-CB-OG
2	G	9	SET	NT-C-CA-CB
2	H	9	SET	O-C-CA-CB
2	G	9	SET	O-C-CA-CB
2	E	9	SET	N-CA-CB-OG
2	G	9	SET	N-CA-CB-OG
2	G	5	SEP	CB-OG-P-O1P
2	E	5	SEP	CB-OG-P-O1P

There are no ring outliers.

4 monomers are involved in 8 short contacts:

Mol	Chain	Res	Type	Clashes	Symm-Clashes
2	G	5	SEP	1	0
2	H	5	SEP	2	0
2	E	5	SEP	2	0
2	F	5	SEP	3	0

## 5.5 Carbohydrates [i](#)

There are no carbohydrates in this entry.

## 5.6 Ligand geometry [i](#)

5 ligands are modelled in this entry.

In the following table, the Counts columns list the number of bonds (or angles) for which Mogul statistics could be retrieved, the number of bonds (or angles) that are observed in the model and the number of bonds (or angles) that are defined in the Chemical Component Dictionary. The Link column lists molecule types, if any, to which the group is linked. The Z score for a bond length (or angle) is the number of standard deviations the observed value is removed from the expected value. A bond length (or angle) with  $|Z| > 2$  is considered an outlier worth inspection. RMSZ is the root-mean-square of all Z scores of the bond lengths (or angles).

Mol	Type	Chain	Res	Link	Bond lengths			Bond angles		
					Counts	RMSZ	# Z  > 2	Counts	RMSZ	# Z  > 2
3	IMD	B	196	-	3,5,5	0.42	0	4,5,5	0.60	0
3	IMD	A	196	-	3,5,5	0.38	0	4,5,5	0.61	0
3	IMD	C	196	-	3,5,5	0.42	0	4,5,5	0.63	0
4	PG4	A	198	-	10,10,12	1.28	1 (10%)	9,9,11	0.85	0
3	IMD	A	197	-	3,5,5	0.41	0	4,5,5	0.57	0

In the following table, the Chirals column lists the number of chiral outliers, the number of chiral centers analysed, the number of these observed in the model and the number defined in the Chemical Component Dictionary. Similar counts are reported in the Torsion and Rings columns. '-' means no outliers of that kind were identified.

Mol	Type	Chain	Res	Link	Chirals	Torsions	Rings
3	IMD	B	196	-	-	-	0/1/1/1
3	IMD	A	196	-	-	-	0/1/1/1
3	IMD	C	196	-	-	-	0/1/1/1
4	PG4	A	198	-	-	1/8/8/10	-
3	IMD	A	197	-	-	-	0/1/1/1

All (1) bond length outliers are listed below:

Mol	Chain	Res	Type	Atoms	Z	Observed(Å)	Ideal(Å)
4	A	198	PG4	O5-C8	-3.67	1.23	1.42

There are no bond angle outliers.

There are no chirality outliers.

All (1) torsion outliers are listed below:

Mol	Chain	Res	Type	Atoms
4	A	198	PG4	O4-C7-C8-O5

There are no ring outliers.

1 monomer is involved in 1 short contact:

Mol	Chain	Res	Type	Clashes	Symm-Clashes
3	A	196	IMD	1	0

## 5.7 Other polymers [i](#)

There are no such residues in this entry.

## 5.8 Polymer linkage issues [i](#)

There are no chain breaks in this entry.

## 6 Fit of model and data [i](#)

### 6.1 Protein, DNA and RNA chains [i](#)

In the following table, the column labelled '#RSRZ > 2' contains the number (and percentage) of RSRZ outliers, followed by percent RSRZ outliers for the chain as percentile scores relative to all X-ray entries and entries of similar resolution. The OWAB column contains the minimum, median, 95<sup>th</sup> percentile and maximum values of the occupancy-weighted average B-factor per residue. The column labelled 'Q < 0.9' lists the number of (and percentage) of residues with an average occupancy less than 0.9.

Mol	Chain	Analysed	<RSRZ>	#RSRZ > 2	OWAB(Å <sup>2</sup> )	Q < 0.9
1	A	198/198 (100%)	0.01	1 (0%) 91 92	14, 23, 46, 60	0
1	B	198/198 (100%)	0.33	11 (5%) 24 29	14, 28, 65, 78	0
1	C	193/198 (97%)	0.14	3 (1%) 72 75	17, 29, 49, 113	0
1	D	191/198 (96%)	0.48	10 (5%) 27 32	20, 38, 64, 136	0
2	E	4/7 (57%)	0.50	0 100 100	26, 30, 30, 44	0
2	F	4/7 (57%)	0.84	1 (25%) 0 0	33, 37, 39, 51	0
2	G	4/7 (57%)	0.18	0 100 100	24, 27, 30, 33	0
2	H	4/7 (57%)	-0.13	0 100 100	25, 27, 31, 34	0
All	All	796/820 (97%)	0.24	26 (3%) 46 53	14, 30, 58, 136	0

All (26) RSRZ outliers are listed below:

Mol	Chain	Res	Type	RSRZ
1	C	5	SER	5.7
1	D	5	SER	5.4
1	D	128	GLU	4.6
1	C	3	ASP	4.1
1	D	127	MET	3.9
1	B	90	ARG	3.7
1	B	83	LEU	3.4
1	D	130	VAL	3.4
1	B	67	ARG	3.2
1	B	69	LEU	3.2
1	B	48	MET	3.2
1	B	76	PHE	3.2
1	B	74	LYS	3.2
1	D	167	THR	3.0
1	D	132	ASN	2.9
1	B	75	GLU	2.9

*Continued on next page...*

*Continued from previous page...*

Mol	Chain	Res	Type	RSRZ
1	C	4	PRO	2.8
1	B	79	GLN	2.6
1	D	195	TYR	2.4
1	A	79	GLN	2.3
1	D	133	ARG	2.2
1	B	65	ILE	2.1
2	F	8	TYR	2.1
1	B	70	GLU	2.1
1	D	6	LYS	2.1
1	D	131	ASP	2.0

## 6.2 Non-standard residues in protein, DNA, RNA chains [i](#)

In the following table, the Atoms column lists the number of modelled atoms in the group and the number defined in the chemical component dictionary. The B-factors column lists the minimum, median, 95<sup>th</sup> percentile and maximum values of B factors of atoms in the group. The column labelled 'Q< 0.9' lists the number of atoms with occupancy less than 0.9.

Mol	Type	Chain	Res	Atoms	RSCC	RSR	B-factors(Å <sup>2</sup> )	Q<0.9
2	SET	F	9	7/7	0.71	0.22	51,62,74,74	0
2	SET	H	9	7/7	0.81	0.23	33,40,48,48	0
2	SET	E	9	7/7	0.81	0.25	41,54,66,66	0
2	N7P	G	3	10/11	0.82	0.25	37,54,65,65	0
2	SET	G	9	7/7	0.90	0.19	35,44,54,54	0
2	N7P	E	3	10/11	0.90	0.18	35,50,66,66	0
2	N7P	F	3	10/11	0.91	0.23	46,61,80,80	0
2	N7P	H	3	10/11	0.91	0.19	39,52,64,64	0
2	SEP	H	5	10/11	0.95	0.15	21,25,30,30	0
2	SEP	G	5	10/11	0.96	0.16	18,23,28,28	0
2	SEP	F	5	10/11	0.96	0.16	24,30,36,40	0
2	SEP	E	5	10/11	0.97	0.16	17,24,28,30	0

## 6.3 Carbohydrates [i](#)

There are no carbohydrates in this entry.

## 6.4 Ligands [i](#)

In the following table, the Atoms column lists the number of modelled atoms in the group and the number defined in the chemical component dictionary. The B-factors column lists the minimum,

median, 95<sup>th</sup> percentile and maximum values of B factors of atoms in the group. The column labelled 'Q< 0.9' lists the number of atoms with occupancy less than 0.9.

Mol	Type	Chain	Res	Atoms	RSCC	RSR	B-factors(Å <sup>2</sup> )	Q<0.9
4	PG4	A	198	11/13	0.90	0.14	22,26,31,31	0
3	IMD	A	197	5/5	0.91	0.22	42,47,56,56	0
3	IMD	B	196	5/5	0.95	0.12	39,44,52,53	0
3	IMD	A	196	5/5	0.96	0.16	27,32,38,38	0
3	IMD	C	196	5/5	0.96	0.17	27,32,38,38	0

## 6.5 Other polymers [i](#)

There are no such residues in this entry.