



Full wwPDB X-ray Structure Validation Report ⓘ

Aug 7, 2023 – 06:35 PM EDT

PDB ID : 1P8R
Title : Structural and Functional Importance of First-Shell Metal Ligands in the Binuclear Manganese Cluster of Arginase I.
Authors : Cama, E.; Emig, F.A.; Ash, D.E.; Christianson, D.W.
Deposited on : 2003-05-07
Resolution : 2.50 Å(reported)

This is a Full wwPDB X-ray Structure Validation Report for a publicly released PDB entry.

We welcome your comments at validation@mail.wwpdb.org

A user guide is available at

<https://www.wwpdb.org/validation/2017/XrayValidationReportHelp>

with specific help available everywhere you see the ⓘ symbol.

The types of validation reports are described at

<http://www.wwpdb.org/validation/2017/FAQs#types>.

The following versions of software and data (see [references ⓘ](#)) were used in the production of this report:

MolProbity : 4.02b-467
Mogul : 1.8.5 (274361), CSD as541be (2020)
Xtrriage (Phenix) : **NOT EXECUTED**
EDS : **NOT EXECUTED**
Percentile statistics : 20191225.v01 (using entries in the PDB archive December 25th 2019)
Ideal geometry (proteins) : Engh & Huber (2001)
Ideal geometry (DNA, RNA) : Parkinson et al. (1996)
Validation Pipeline (wwPDB-VP) : 2.35

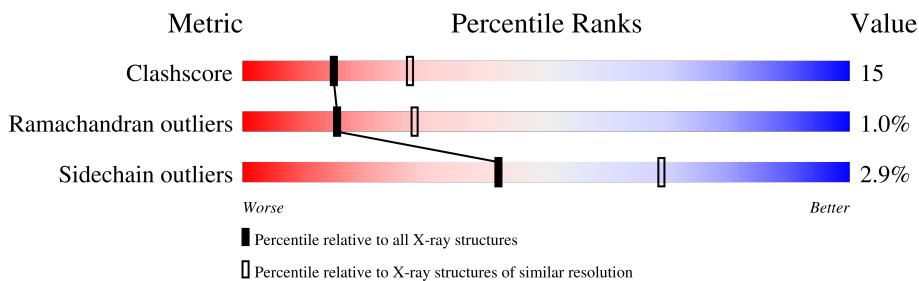
1 Overall quality at a glance

The following experimental techniques were used to determine the structure:

X-RAY DIFFRACTION

The reported resolution of this entry is 2.50 Å.

Percentile scores (ranging between 0-100) for global validation metrics of the entry are shown in the following graphic. The table shows the number of entries on which the scores are based.



Metric	Whole archive (#Entries)	Similar resolution (#Entries, resolution range(Å))
Clashscore	141614	5346 (2.50-2.50)
Ramachandran outliers	138981	5231 (2.50-2.50)
Sidechain outliers	138945	5233 (2.50-2.50)

The table below summarises the geometric issues observed across the polymeric chains and their fit to the electron density. The red, orange, yellow and green segments of the lower bar indicate the fraction of residues that contain outliers for ≥ 3 , 2, 1 and 0 types of geometric quality criteria respectively. A grey segment represents the fraction of residues that are not modelled. The numeric value for each fraction is indicated below the corresponding segment, with a dot representing fractions $\leq 5\%$.

Note EDS was not executed.

Mol	Chain	Length	Quality of chain
1	A	308	
1	B	308	

2 Entry composition [i](#)

There are 5 unique types of molecules in this entry. The entry contains 4760 atoms, of which 0 are hydrogens and 0 are deuteriums.

In the tables below, the ZeroOcc column contains the number of atoms modelled with zero occupancy, the AltConf column contains the number of residues with at least one atom in alternate conformation and the Trace column contains the number of residues modelled with at most 2 atoms.

- Molecule 1 is a protein called Arginase 1.

Mol	Chain	Residues	Atoms					ZeroOcc	AltConf	Trace
			Total	C	N	O	S			
1	A	308	2344	1494	397	446	7	0	0	0
1	B	308	2344	1494	397	446	7	0	0	0

There are 2 discrepancies between the modelled and reference sequences:

Chain	Residue	Modelled	Actual	Comment	Reference
A	101	GLU	HIS	engineered mutation	UNP P07824
B	101	GLU	HIS	engineered mutation	UNP P07824

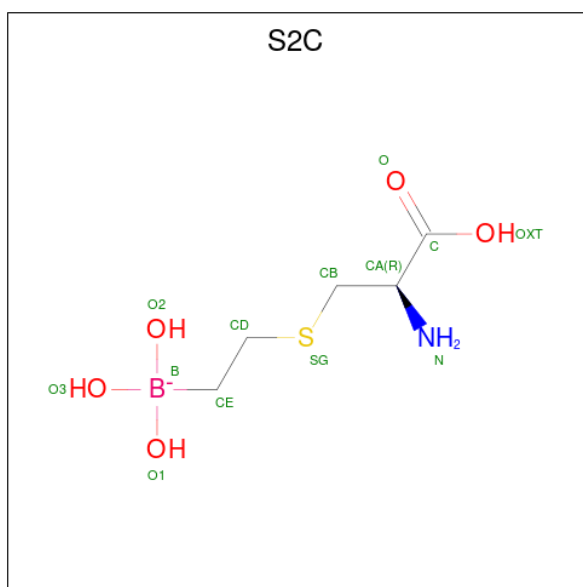
- Molecule 2 is CHLORIDE ION (three-letter code: CL) (formula: Cl).

Mol	Chain	Residues	Atoms		ZeroOcc	AltConf
2	A	2	Total	Cl	0	0
			2	2		
2	B	2	Total	Cl	0	0
			2	2		

- Molecule 3 is MANGANESE (II) ION (three-letter code: MN) (formula: Mn).

Mol	Chain	Residues	Atoms		ZeroOcc	AltConf
3	A	2	Total	Mn	0	0
			2	2		
3	B	2	Total	Mn	0	0
			2	2		

- Molecule 4 is S-2-(BORONOETHYL)-L-CYSTEINE (three-letter code: S2C) (formula: C₅H₁₃BNO₅S).



Mol	Chain	Residues	Atoms					ZeroOcc	AltConf	
			Total	B	C	N	O			S
4	A	1	Total 13	B 1	C 5	N 1	O 5	S 1	0	0
4	B	1	Total 13	B 1	C 5	N 1	O 5	S 1	0	0

- Molecule 5 is water.

Mol	Chain	Residues	Atoms	ZeroOcc	AltConf	
5	A	14	Total 14	O 14	0	0
5	B	24	Total 24	O 24	0	0

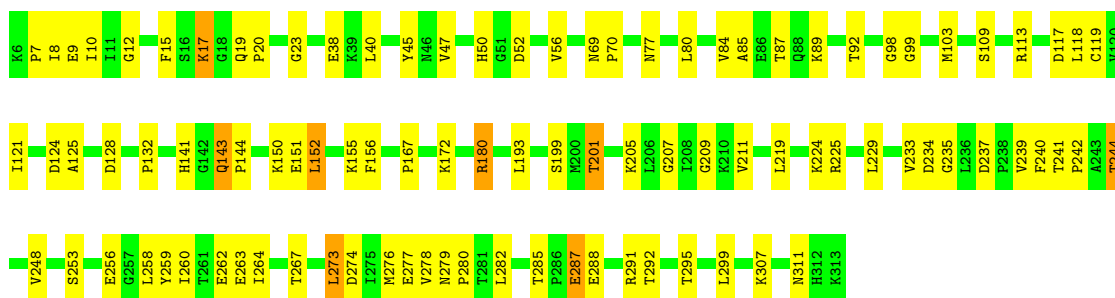
3 Residue-property plots

These plots are drawn for all protein, RNA, DNA and oligosaccharide chains in the entry. The first graphic for a chain summarises the proportions of the various outlier classes displayed in the second graphic. The second graphic shows the sequence view annotated by issues in geometry. Residues are color-coded according to the number of geometric quality criteria for which they contain at least one outlier: green = 0, yellow = 1, orange = 2 and red = 3 or more. Stretches of 2 or more consecutive residues without any outlier are shown as a green connector. Residues present in the sample, but not in the model, are shown in grey.

Note EDS was not executed.

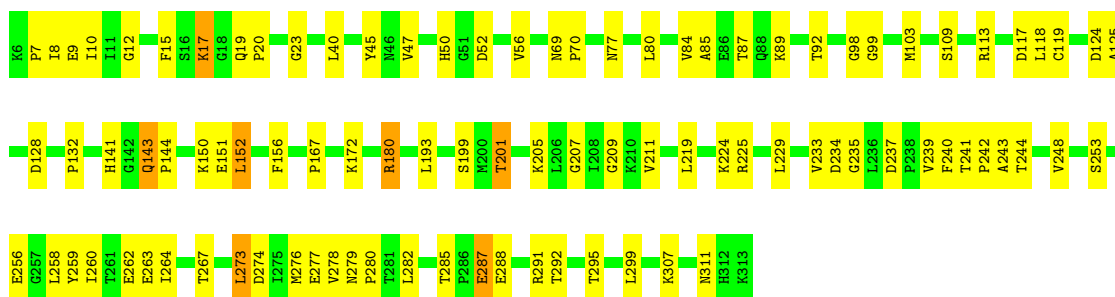
- Molecule 1: Arginase 1

Chain A: 



- Molecule 1: Arginase 1

Chain B: 



4 Data and refinement statistics

Xtriage (Phenix) and EDS were not executed - this section is therefore incomplete.

Property	Value	Source
Space group	P 3	Depositor
Cell constants a, b, c, α , β , γ	91.00Å 91.00Å 69.30Å 90.00° 90.00° 120.00°	Depositor
Resolution (Å)	500.00 – 2.50	Depositor
% Data completeness (in resolution range)	98.7 (500.00-2.50)	Depositor
R_{merge}	0.10	Depositor
R_{sym}	(Not available)	Depositor
Refinement program	CNS 1.1	Depositor
R, R_{free}	0.144 , 0.201	Depositor
Estimated twinning fraction	No twinning to report.	Xtriage
Total number of atoms	4760	wwPDB-VP
Average B, all atoms (Å ²)	20.0	wwPDB-VP

5 Model quality [i](#)

5.1 Standard geometry [i](#)

Bond lengths and bond angles in the following residue types are not validated in this section: S2C, CL, MN

The Z score for a bond length (or angle) is the number of standard deviations the observed value is removed from the expected value. A bond length (or angle) with $|Z| > 5$ is considered an outlier worth inspection. RMSZ is the root-mean-square of all Z scores of the bond lengths (or angles).

Mol	Chain	Bond lengths		Bond angles	
		RMSZ	# Z >5	RMSZ	# Z >5
1	A	0.38	0/2394	0.66	0/3248
1	B	0.38	0/2394	0.66	0/3248
All	All	0.38	0/4788	0.66	0/6496

Chiral center outliers are detected by calculating the chiral volume of a chiral center and verifying if the center is modelled as a planar moiety or with the opposite hand. A planarity outlier is detected by checking planarity of atoms in a peptide group, atoms in a mainchain group or atoms of a sidechain that are expected to be planar.

Mol	Chain	#Chirality outliers	#Planarity outliers
1	A	0	1
1	B	0	1
All	All	0	2

There are no bond length outliers.

There are no bond angle outliers.

There are no chirality outliers.

All (2) planarity outliers are listed below:

Mol	Chain	Res	Type	Group
1	A	98	GLY	Peptide
1	B	98	GLY	Peptide

5.2 Too-close contacts [i](#)

In the following table, the Non-H and H(model) columns list the number of non-hydrogen atoms and hydrogen atoms in the chain respectively. The H(added) column lists the number of hydrogen atoms added and optimized by MolProbity. The Clashes column lists the number of clashes within the asymmetric unit, whereas Symm-Clashes lists symmetry-related clashes.

Mol	Chain	Non-H	H(model)	H(added)	Clashes	Symm-Clashes
1	A	2344	0	2375	74	0
1	B	2344	0	2375	69	0
2	A	2	0	0	0	0
2	B	2	0	0	0	0
3	A	2	0	0	0	0
3	B	2	0	0	0	0
4	A	13	0	11	0	0
4	B	13	0	11	0	0
5	A	14	0	0	0	0
5	B	24	0	0	1	0
All	All	4760	0	4772	143	0

The all-atom clashscore is defined as the number of clashes found per 1000 atoms (including hydrogen atoms). The all-atom clashscore for this structure is 15.

All (143) close contacts within the same asymmetric unit are listed below, sorted by their clash magnitude.

Atom-1	Atom-2	Interatomic distance (Å)	Clash overlap (Å)
1:A:172:LYS:H	1:A:172:LYS:HD2	1.31	0.94
1:B:172:LYS:H	1:B:172:LYS:HD2	1.31	0.93
1:A:307:LYS:H	1:A:311:ASN:HD21	1.18	0.91
1:B:307:LYS:H	1:B:311:ASN:HD21	1.18	0.87
1:B:143:GLN:H	1:B:144:PRO:HD3	1.40	0.87
1:A:143:GLN:H	1:A:144:PRO:HD3	1.40	0.86
1:B:143:GLN:N	1:B:144:PRO:HD3	1.93	0.83
1:A:143:GLN:N	1:A:144:PRO:HD3	1.93	0.82
1:A:172:LYS:HD2	1:A:172:LYS:N	1.97	0.79
1:B:172:LYS:HD2	1:B:172:LYS:N	1.98	0.78
1:A:234:ASP:HB3	1:A:244:THR:HG21	1.67	0.76
1:B:233:VAL:HG21	1:B:278:VAL:HG22	1.68	0.75
1:A:233:VAL:HG21	1:A:278:VAL:HG22	1.67	0.74
1:B:258:LEU:O	1:B:262:GLU:HG3	1.88	0.73
1:B:234:ASP:HB3	1:B:244:THR:HG21	1.71	0.71
1:A:258:LEU:O	1:A:262:GLU:HG3	1.89	0.71
1:B:143:GLN:N	1:B:144:PRO:CD	2.54	0.70
1:A:143:GLN:N	1:A:144:PRO:CD	2.54	0.69
1:B:12:GLY:HA3	1:B:52:ASP:OD1	1.95	0.66
1:B:128:ASP:HB3	1:B:144:PRO:HD2	1.77	0.66
1:A:12:GLY:HA3	1:A:52:ASP:OD1	1.94	0.66
1:A:128:ASP:HB3	1:A:144:PRO:HD2	1.78	0.66
1:B:9:GLU:HG2	1:B:87:THR:HG21	1.77	0.65
1:B:117:ASP:O	1:B:225:ARG:HD2	1.97	0.65

Continued on next page...

Continued from previous page...

Atom-1	Atom-2	Interatomic distance (Å)	Clash overlap (Å)
1:B:7:PRO:HG2	1:B:92:THR:HG22	1.79	0.64
1:A:117:ASP:O	1:A:225:ARG:HD2	1.98	0.62
1:A:9:GLU:HG2	1:A:87:THR:HG21	1.79	0.62
1:A:7:PRO:HG2	1:A:92:THR:HG22	1.80	0.62
1:A:119:CYS:HB2	1:A:219:LEU:HD22	1.83	0.60
1:B:119:CYS:HB2	1:B:219:LEU:HD22	1.83	0.60
1:B:233:VAL:HG13	1:B:241:THR:HB	1.84	0.60
1:B:307:LYS:HD2	5:B:823:HOH:O	2.01	0.60
1:A:233:VAL:HG13	1:A:241:THR:HB	1.83	0.60
1:A:263:GLU:O	1:A:267:THR:HG23	2.02	0.59
1:A:229:LEU:HD22	1:A:264:ILE:HD12	1.84	0.58
1:B:263:GLU:O	1:B:267:THR:HG23	2.03	0.58
1:B:103:MET:HB2	1:B:276:MET:HE1	1.86	0.57
1:A:172:LYS:H	1:A:172:LYS:CD	2.12	0.57
1:A:77:ASN:OD1	1:A:103:MET:HA	2.06	0.56
1:B:85:ALA:O	1:B:89:LYS:HB2	2.05	0.56
1:B:229:LEU:HD22	1:B:264:ILE:HD12	1.87	0.56
1:B:287:GLU:CD	1:B:291:ARG:HH21	2.10	0.55
1:B:56:VAL:O	1:B:56:VAL:HG23	2.07	0.55
1:A:287:GLU:CD	1:A:291:ARG:HH21	2.09	0.55
1:A:103:MET:HB2	1:A:276:MET:HE1	1.88	0.54
1:B:240:PHE:C	1:B:242:PRO:HD3	2.28	0.54
1:A:151:GLU:OE2	1:A:172:LYS:NZ	2.40	0.54
1:A:85:ALA:O	1:A:89:LYS:HB2	2.07	0.54
1:B:244:THR:HG23	1:B:277:GLU:O	2.08	0.54
1:A:56:VAL:HG23	1:A:56:VAL:O	2.08	0.54
1:A:244:THR:HG23	1:A:277:GLU:O	2.08	0.54
1:B:172:LYS:H	1:B:172:LYS:CD	2.13	0.53
1:A:240:PHE:C	1:A:242:PRO:HD3	2.30	0.52
1:B:77:ASN:OD1	1:B:103:MET:HA	2.09	0.52
1:A:233:VAL:HG21	1:A:278:VAL:CG2	2.37	0.52
1:A:15:PHE:CZ	1:A:17:LYS:HB2	2.45	0.52
1:B:151:GLU:OE2	1:B:172:LYS:NZ	2.43	0.52
1:A:132:PRO:HD2	1:A:156:PHE:CD2	2.44	0.52
1:A:224:LYS:N	1:A:224:LYS:HD2	2.25	0.52
1:B:19:GLN:HB2	1:B:20:PRO:HD2	1.92	0.51
1:B:132:PRO:HD2	1:B:156:PHE:CD2	2.45	0.51
1:A:19:GLN:HB2	1:A:20:PRO:HD2	1.92	0.51
1:B:15:PHE:CZ	1:B:17:LYS:HB2	2.46	0.51
1:A:180:ARG:NH2	1:A:235:GLY:O	2.43	0.50
1:A:199:SER:OG	1:A:201:THR:HG23	2.11	0.50

Continued on next page...

Continued from previous page...

Atom-1	Atom-2	Interatomic distance (Å)	Clash overlap (Å)
1:B:10:ILE:N	1:B:10:ILE:HD12	2.27	0.50
1:B:180:ARG:NH2	1:B:235:GLY:O	2.45	0.50
1:B:224:LYS:N	1:B:224:LYS:HD2	2.27	0.50
1:A:180:ARG:NH1	1:A:248:VAL:O	2.42	0.49
1:A:307:LYS:N	1:A:311:ASN:HD21	2.00	0.49
1:B:233:VAL:HG21	1:B:278:VAL:CG2	2.39	0.49
1:B:9:GLU:OE2	1:B:50:HIS:HB2	2.13	0.49
1:A:229:LEU:HD22	1:A:264:ILE:CD1	2.42	0.48
1:A:10:ILE:HD12	1:A:10:ILE:N	2.29	0.48
1:B:180:ARG:NH1	1:B:248:VAL:O	2.44	0.48
1:B:118:LEU:O	1:B:118:LEU:HD12	2.14	0.48
1:B:199:SER:OG	1:B:201:THR:HG23	2.14	0.48
1:A:143:GLN:H	1:A:144:PRO:CD	2.17	0.48
1:A:9:GLU:OE2	1:A:50:HIS:HB2	2.13	0.48
1:A:109:SER:O	1:A:113:ARG:HG3	2.14	0.47
1:A:287:GLU:HG3	1:A:288:GLU:N	2.29	0.47
1:A:256:GLU:O	1:A:260:ILE:HG13	2.15	0.47
1:A:207:GLY:O	1:A:211:VAL:HG23	2.14	0.47
1:B:229:LEU:HD22	1:B:264:ILE:CD1	2.44	0.47
1:B:256:GLU:O	1:B:260:ILE:HG13	2.15	0.47
1:B:285:THR:OG1	1:B:288:GLU:HG3	2.14	0.47
1:A:285:THR:OG1	1:A:288:GLU:HG3	2.15	0.47
1:B:124:ASP:OD2	1:B:125:ALA:N	2.48	0.47
1:A:291:ARG:O	1:A:295:THR:HG23	2.15	0.46
1:A:118:LEU:HD12	1:A:118:LEU:O	2.16	0.46
1:A:279:ASN:CG	1:A:282:LEU:HG	2.35	0.46
1:B:273:LEU:HD22	1:B:274:ASP:N	2.31	0.46
1:B:150:LYS:HA	1:B:167:PRO:CB	2.46	0.46
1:A:180:ARG:HG3	1:A:248:VAL:HG11	1.98	0.45
1:A:273:LEU:HD22	1:A:274:ASP:N	2.31	0.45
1:B:180:ARG:HG3	1:B:248:VAL:HG11	1.97	0.45
1:A:150:LYS:HA	1:A:167:PRO:CB	2.47	0.45
1:B:109:SER:O	1:B:113:ARG:HG3	2.17	0.45
1:B:80:LEU:O	1:B:84:VAL:HG23	2.16	0.45
1:B:291:ARG:O	1:B:295:THR:HG23	2.16	0.45
1:A:124:ASP:OD2	1:A:125:ALA:N	2.50	0.45
1:A:80:LEU:O	1:A:84:VAL:HG23	2.16	0.44
1:A:260:ILE:O	1:A:264:ILE:HG13	2.16	0.44
1:B:279:ASN:CG	1:B:282:LEU:HG	2.38	0.44
1:B:8:ILE:HG12	1:B:45:TYR:HB3	1.99	0.44
1:A:8:ILE:HG12	1:A:45:TYR:HB3	2.00	0.44

Continued on next page...

Continued from previous page...

Atom-1	Atom-2	Interatomic distance (Å)	Clash overlap (Å)
1:B:287:GLU:HG3	1:B:288:GLU:N	2.32	0.44
1:B:40:LEU:HB3	1:B:47:VAL:HG21	1.99	0.44
1:A:40:LEU:HB3	1:A:47:VAL:HG21	2.00	0.43
1:B:237:ASP:OD1	1:B:239:VAL:HG23	2.19	0.43
1:B:207:GLY:O	1:B:211:VAL:HG23	2.18	0.43
1:A:258:LEU:HD23	1:A:299:LEU:HD23	2.01	0.42
1:A:240:PHE:CE2	1:A:253:SER:HA	2.55	0.42
1:B:152:LEU:HD13	1:B:193:LEU:HD21	2.01	0.42
1:B:260:ILE:O	1:B:264:ILE:HG13	2.19	0.42
1:B:117:ASP:O	1:B:225:ARG:CD	2.67	0.42
1:B:242:PRO:HB2	1:B:288:GLU:HB3	2.02	0.42
1:A:40:LEU:HD23	1:A:40:LEU:HA	1.93	0.42
1:A:237:ASP:OD1	1:A:239:VAL:HG23	2.19	0.42
1:B:150:LYS:HA	1:B:167:PRO:HB3	2.02	0.42
1:B:209:GLY:HA2	1:B:259:TYR:CE2	2.55	0.42
1:B:69:ASN:N	1:B:70:PRO:CD	2.83	0.42
1:B:240:PHE:CE2	1:B:253:SER:HA	2.55	0.42
1:A:242:PRO:HB2	1:A:288:GLU:HB3	2.02	0.42
1:B:242:PRO:HD2	1:B:292:THR:OG1	2.20	0.42
1:A:150:LYS:HA	1:A:167:PRO:HB3	2.02	0.41
1:A:279:ASN:HB3	1:A:282:LEU:HD12	2.02	0.41
1:A:155:LYS:HA	1:A:155:LYS:HD3	1.86	0.41
1:A:209:GLY:HA2	1:A:259:TYR:CE2	2.55	0.41
1:A:121:ILE:O	1:A:229:LEU:HD12	2.20	0.41
1:B:23:GLY:O	1:B:280:PRO:HD2	2.20	0.41
1:B:279:ASN:HB3	1:B:282:LEU:HD12	2.02	0.41
1:A:69:ASN:N	1:A:70:PRO:CD	2.84	0.41
1:A:23:GLY:O	1:A:280:PRO:HD2	2.21	0.40
1:A:152:LEU:HD13	1:A:193:LEU:HD21	2.03	0.40
1:B:258:LEU:HD23	1:B:299:LEU:HD23	2.02	0.40
1:A:87:THR:HB	1:A:92:THR:OG1	2.22	0.40
1:B:87:THR:HB	1:B:92:THR:OG1	2.21	0.40
1:B:243:ALA:HB1	1:B:279:ASN:O	2.22	0.40
1:A:151:GLU:OE1	1:A:151:GLU:N	2.48	0.40
1:A:242:PRO:HD2	1:A:292:THR:OG1	2.21	0.40
1:A:117:ASP:O	1:A:225:ARG:CD	2.68	0.40
1:A:38:GLU:H	1:A:38:GLU:CD	2.25	0.40

There are no symmetry-related clashes.

5.3 Torsion angles [i](#)

5.3.1 Protein backbone [i](#)

In the following table, the Percentiles column shows the percent Ramachandran outliers of the chain as a percentile score with respect to all X-ray entries followed by that with respect to entries of similar resolution.

The Analysed column shows the number of residues for which the backbone conformation was analysed, and the total number of residues.

Mol	Chain	Analysed	Favoured	Allowed	Outliers	Percentiles	
1	A	306/308 (99%)	287 (94%)	16 (5%)	3 (1%)	15	28
1	B	306/308 (99%)	284 (93%)	19 (6%)	3 (1%)	15	28
All	All	612/616 (99%)	571 (93%)	35 (6%)	6 (1%)	15	28

All (6) Ramachandran outliers are listed below:

Mol	Chain	Res	Type
1	A	99	GLY
1	B	99	GLY
1	A	143	GLN
1	A	180	ARG
1	B	143	GLN
1	B	180	ARG

5.3.2 Protein sidechains [i](#)

In the following table, the Percentiles column shows the percent sidechain outliers of the chain as a percentile score with respect to all X-ray entries followed by that with respect to entries of similar resolution.

The Analysed column shows the number of residues for which the sidechain conformation was analysed, and the total number of residues.

Mol	Chain	Analysed	Rotameric	Outliers	Percentiles	
1	A	258/258 (100%)	250 (97%)	8 (3%)	40	67
1	B	258/258 (100%)	251 (97%)	7 (3%)	44	71
All	All	516/516 (100%)	501 (97%)	15 (3%)	42	69

All (15) residues with a non-rotameric sidechain are listed below:

Mol	Chain	Res	Type
1	A	17	LYS
1	A	141	HIS
1	A	152	LEU
1	A	201	THR
1	A	205	LYS
1	A	244	THR
1	A	273	LEU
1	A	287	GLU
1	B	17	LYS
1	B	141	HIS
1	B	152	LEU
1	B	201	THR
1	B	205	LYS
1	B	273	LEU
1	B	287	GLU

Sometimes sidechains can be flipped to improve hydrogen bonding and reduce clashes. All (9) such sidechains are listed below:

Mol	Chain	Res	Type
1	A	79	GLN
1	A	88	GLN
1	A	90	ASN
1	A	141	HIS
1	A	311	ASN
1	B	79	GLN
1	B	88	GLN
1	B	141	HIS
1	B	311	ASN

5.3.3 RNA [i](#)

There are no RNA molecules in this entry.

5.4 Non-standard residues in protein, DNA, RNA chains [i](#)

There are no non-standard protein/DNA/RNA residues in this entry.

5.5 Carbohydrates [i](#)

There are no monosaccharides in this entry.

5.6 Ligand geometry

Of 10 ligands modelled in this entry, 8 are monoatomic - leaving 2 for Mogul analysis.

In the following table, the Counts columns list the number of bonds (or angles) for which Mogul statistics could be retrieved, the number of bonds (or angles) that are observed in the model and the number of bonds (or angles) that are defined in the Chemical Component Dictionary. The Link column lists molecule types, if any, to which the group is linked. The Z score for a bond length (or angle) is the number of standard deviations the observed value is removed from the expected value. A bond length (or angle) with $|Z| > 2$ is considered an outlier worth inspection. RMSZ is the root-mean-square of all Z scores of the bond lengths (or angles).

Mol	Type	Chain	Res	Link	Bond lengths			Bond angles		
					Counts	RMSZ	# Z > 2	Counts	RMSZ	# Z > 2
4	S2C	B	552	3	8,12,12	0.85	0	11,16,16	1.04	0
4	S2C	A	551	3	8,12,12	1.01	0	11,16,16	0.96	0

In the following table, the Chirals column lists the number of chiral outliers, the number of chiral centers analysed, the number of these observed in the model and the number defined in the Chemical Component Dictionary. Similar counts are reported in the Torsion and Rings columns. '-' means no outliers of that kind were identified.

Mol	Type	Chain	Res	Link	Chirals	Torsions	Rings
4	S2C	B	552	3	-	2/8/12/12	-
4	S2C	A	551	3	-	2/8/12/12	-

There are no bond length outliers.

There are no bond angle outliers.

There are no chirality outliers.

All (4) torsion outliers are listed below:

Mol	Chain	Res	Type	Atoms
4	A	551	S2C	N-CA-CB-SG
4	A	551	S2C	C-CA-CB-SG
4	B	552	S2C	N-CA-CB-SG
4	B	552	S2C	C-CA-CB-SG

There are no ring outliers.

No monomer is involved in short contacts.

5.7 Other polymers [i](#)

There are no such residues in this entry.

5.8 Polymer linkage issues [i](#)

There are no chain breaks in this entry.

6 Fit of model and data [i](#)

6.1 Protein, DNA and RNA chains [i](#)

EDS was not executed - this section is therefore empty.

6.2 Non-standard residues in protein, DNA, RNA chains [i](#)

EDS was not executed - this section is therefore empty.

6.3 Carbohydrates [i](#)

EDS was not executed - this section is therefore empty.

6.4 Ligands [i](#)

EDS was not executed - this section is therefore empty.

6.5 Other polymers [i](#)

EDS was not executed - this section is therefore empty.