



# wwPDB X-ray Structure Validation Summary Report ⓘ

Jun 15, 2024 – 06:09 PM EDT

PDB ID : 4P5B  
Title : Crystal structure of a UMP/dUMP methylase PolB from *Streptomyces cacaoi* bound with 5-Br dUMP  
Authors : Li, Y.; Chen, W.; Li, J.; Xia, Z.; Deng, Z.; Zhou, J.  
Deposited on : 2014-03-15  
Resolution : 2.27 Å (reported)

This is a wwPDB X-ray Structure Validation Summary Report for a publicly released PDB entry.

We welcome your comments at [validation@mail.wwpdb.org](mailto:validation@mail.wwpdb.org)

A user guide is available at

<https://www.wwpdb.org/validation/2017/XrayValidationReportHelp>

with specific help available everywhere you see the ⓘ symbol.

The types of validation reports are described at

<http://www.wwpdb.org/validation/2017/FAQs#types>.

---

The following versions of software and data (see [references ⓘ](#)) were used in the production of this report:

MolProbity : 4.02b-467  
Mogul : 1.8.5 (274361), CSD as541be (2020)  
Xtriage (Phenix) : 1.13  
EDS : 2.37.1  
buster-report : 1.1.7 (2018)  
Percentile statistics : 20191225.v01 (using entries in the PDB archive December 25th 2019)  
Refmac : 5.8.0158  
CCP4 : 7.0.044 (Gargrove)  
Ideal geometry (proteins) : Engh & Huber (2001)  
Ideal geometry (DNA, RNA) : Parkinson et al. (1996)  
Validation Pipeline (wwPDB-VP) : 2.37.1

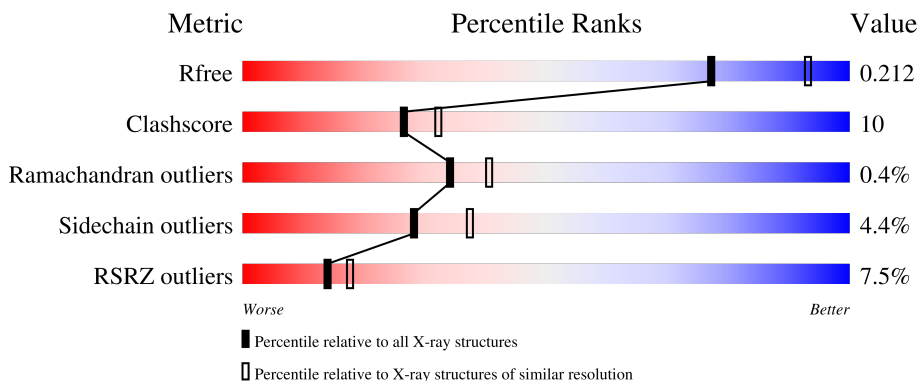
# 1 Overall quality at a glance

The following experimental techniques were used to determine the structure:

*X-RAY DIFFRACTION*

The reported resolution of this entry is 2.27 Å.

Percentile scores (ranging between 0-100) for global validation metrics of the entry are shown in the following graphic. The table shows the number of entries on which the scores are based.



Metric	Whole archive (#Entries)	Similar resolution (#Entries, resolution range(Å))
$R_{free}$	130704	6980 (2.30-2.26)
Clashscore	141614	7711 (2.30-2.26)
Ramachandran outliers	138981	7597 (2.30-2.26)
Sidechain outliers	138945	7598 (2.30-2.26)
RSRZ outliers	127900	6849 (2.30-2.26)

The table below summarises the geometric issues observed across the polymeric chains and their fit to the electron density. The red, orange, yellow and green segments of the lower bar indicate the fraction of residues that contain outliers for  $\geq 3$ , 2, 1 and 0 types of geometric quality criteria respectively. A grey segment represents the fraction of residues that are not modelled. The numeric value for each fraction is indicated below the corresponding segment, with a dot representing fractions  $\leq 5\%$ . The upper red bar (where present) indicates the fraction of residues that have poor fit to the electron density. The numeric value is given above the bar.

Mol	Chain	Length	Quality of chain
1	A	239	
1	B	239	
1	C	239	
1	D	239	

## 2 Entry composition [i](#)

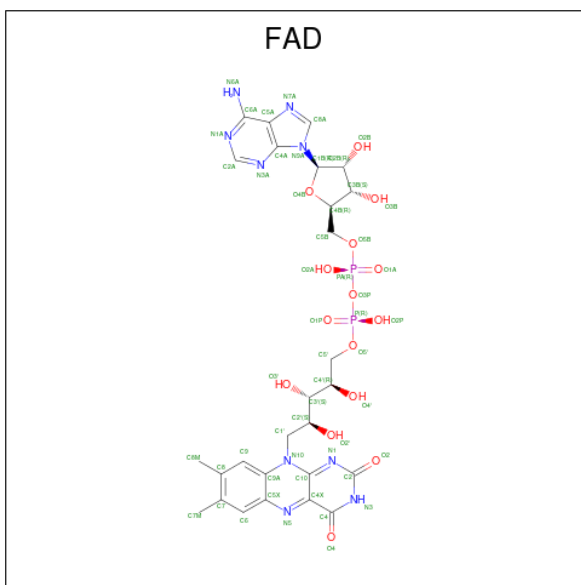
There are 5 unique types of molecules in this entry. The entry contains 8125 atoms, of which 0 are hydrogens and 0 are deuteriums.

In the tables below, the ZeroOcc column contains the number of atoms modelled with zero occupancy, the AltConf column contains the number of residues with at least one atom in alternate conformation and the Trace column contains the number of residues modelled with at most 2 atoms.

- Molecule 1 is a protein called Thymidylate synthase ThyX.

Mol	Chain	Residues	Atoms					ZeroOcc	AltConf	Trace
			Total	C	N	O	S			
1	A	229	Total 1813	C 1132	N 336	O 337	S 8	0	1	0
1	B	235	Total 1874	C 1169	N 346	O 351	S 8	0	1	0
1	C	234	Total 1854	C 1157	N 339	O 350	S 8	0	1	0
1	D	235	Total 1881	C 1175	N 346	O 352	S 8	0	1	0

- Molecule 2 is FLAVIN-ADENINE DINUCLEOTIDE (three-letter code: FAD) (formula: C<sub>27</sub>H<sub>33</sub>N<sub>9</sub>O<sub>15</sub>P<sub>2</sub>).



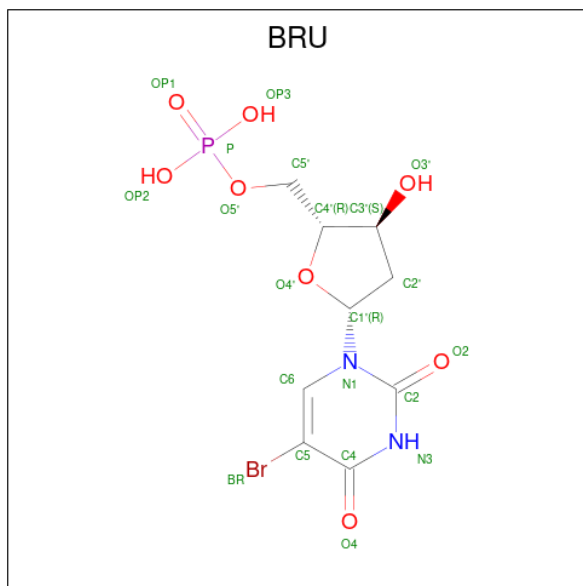
Mol	Chain	Residues	Atoms				ZeroOcc	AltConf	
			Total	C	N	O			P
2	A	1	Total 53	C 27	N 9	O 15	P 2	0	0
2	B	1	Total 53	C 27	N 9	O 15	P 2	0	0

*Continued on next page...*

Continued from previous page...

Mol	Chain	Residues	Atoms					ZeroOcc	AltConf
2	C	1	Total	C	N	O	P	0	0
			53	27	9	15	2		
2	D	1	Total	C	N	O	P	0	0
			53	27	9	15	2		

- Molecule 3 is 5-BROMO-2'-DEOXYURIDINE-5'-MONOPHOSPHATE (three-letter code: BRU) (formula: C<sub>9</sub>H<sub>12</sub>BrN<sub>2</sub>O<sub>8</sub>P).



Mol	Chain	Residues	Atoms						ZeroOcc	AltConf
3	A	1	Total	Br	C	N	O	P	0	0
			21	1	9	2	8	1		
3	B	1	Total	Br	C	N	O	P	0	0
			21	1	9	2	8	1		
3	C	1	Total	Br	C	N	O	P	0	0
			21	1	9	2	8	1		
3	D	1	Total	Br	C	N	O	P	0	0
			21	1	9	2	8	1		

- Molecule 4 is SULFATE ION (three-letter code: SO4) (formula: O<sub>4</sub>S).



Mol	Chain	Residues	Atoms			ZeroOcc	AltConf
4	A	1	Total	O	S	0	0
			5	4	1		

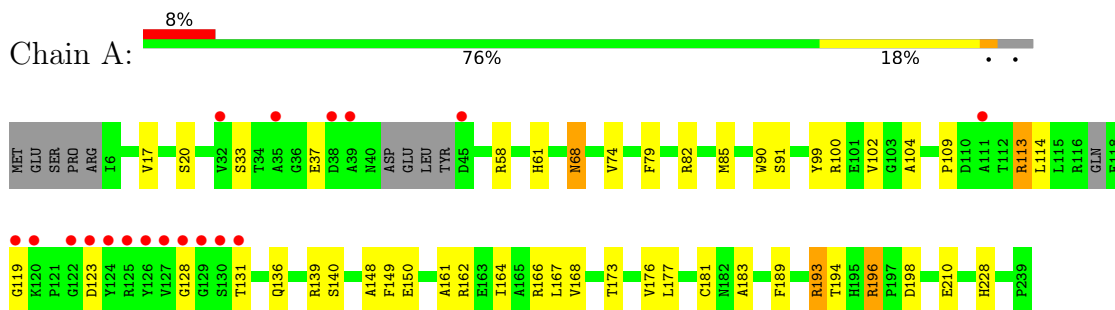
- Molecule 5 is water.

Mol	Chain	Residues	Atoms		ZeroOcc	AltConf
5	A	104	Total	O	0	0
			104	104		
5	B	97	Total	O	0	0
			97	97		
5	C	93	Total	O	0	0
			93	93		
5	D	108	Total	O	0	0
			108	108		

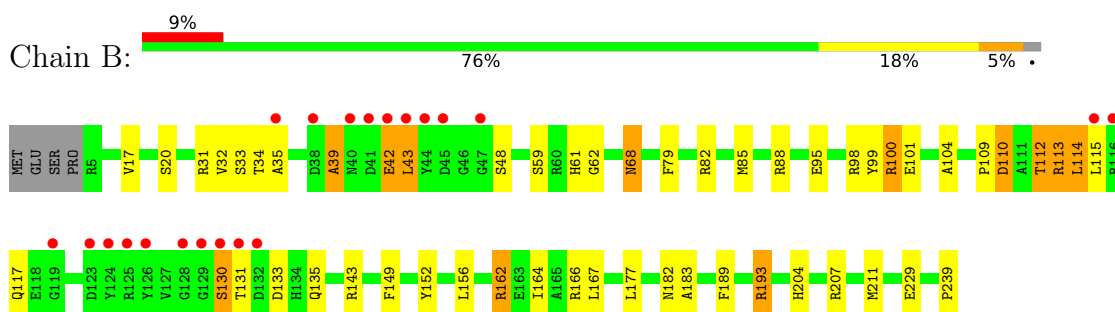
### 3 Residue-property plots [i](#)

These plots are drawn for all protein, RNA, DNA and oligosaccharide chains in the entry. The first graphic for a chain summarises the proportions of the various outlier classes displayed in the second graphic. The second graphic shows the sequence view annotated by issues in geometry and electron density. Residues are color-coded according to the number of geometric quality criteria for which they contain at least one outlier: green = 0, yellow = 1, orange = 2 and red = 3 or more. A red dot above a residue indicates a poor fit to the electron density ( $RSRZ > 2$ ). Stretches of 2 or more consecutive residues without any outlier are shown as a green connector. Residues present in the sample, but not in the model, are shown in grey.

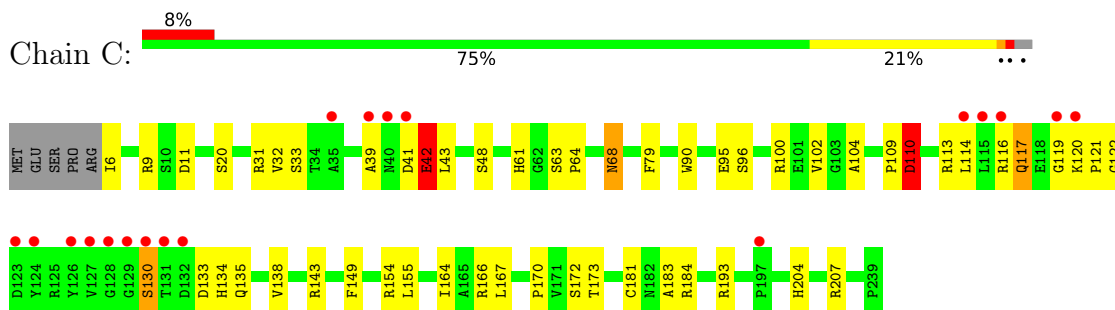
- Molecule 1: Thymidylate synthase ThyX



- Molecule 1: Thymidylate synthase ThyX

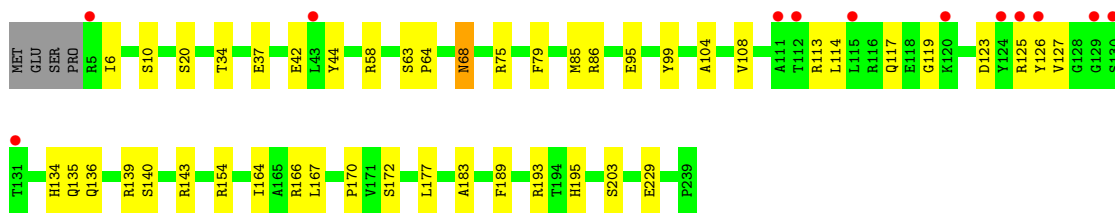


- Molecule 1: Thymidylate synthase ThyX



- Molecule 1: Thymidylate synthase ThyX





## 4 Data and refinement statistics

Property	Value	Source
Space group	C 1 2 1	Depositor
Cell constants a, b, c, $\alpha$ , $\beta$ , $\gamma$	170.79Å 59.50Å 118.98Å 90.00° 120.31° 90.00°	Depositor
Resolution (Å)	50.00 – 2.27 34.24 – 2.27	Depositor EDS
% Data completeness (in resolution range)	97.6 (50.00-2.27) 97.6 (34.24-2.27)	Depositor EDS
$R_{merge}$	(Not available)	Depositor
$R_{sym}$	(Not available)	Depositor
$\langle I/\sigma(I) \rangle$ <sup>1</sup>	2.00 (at 2.27Å)	Xtrriage
Refinement program	REFMAC 5.5.0102	Depositor
R, $R_{free}$	0.164 , 0.216 0.163 , 0.212	Depositor DCC
$R_{free}$ test set	2330 reflections (4.99%)	wwPDB-VP
Wilson B-factor (Å <sup>2</sup> )	26.9	Xtrriage
Anisotropy	0.078	Xtrriage
Bulk solvent $k_{sol}$ (e/Å <sup>3</sup> ), $B_{sol}$ (Å <sup>2</sup> )	0.38 , 54.0	EDS
L-test for twinning <sup>2</sup>	$\langle  L  \rangle = 0.49$ , $\langle L^2 \rangle = 0.33$	Xtrriage
Estimated twinning fraction	No twinning to report.	Xtrriage
$F_o, F_c$ correlation	0.95	EDS
Total number of atoms	8125	wwPDB-VP
Average B, all atoms (Å <sup>2</sup> )	30.0	wwPDB-VP

Xtrriage's analysis on translational NCS is as follows: *The largest off-origin peak in the Patterson function is 5.41% of the height of the origin peak. No significant pseudotranslation is detected.*

<sup>1</sup>Intensities estimated from amplitudes.

<sup>2</sup>Theoretical values of  $\langle |L| \rangle$ ,  $\langle L^2 \rangle$  for acentric reflections are 0.5, 0.333 respectively for untwinned datasets, and 0.375, 0.2 for perfectly twinned datasets.



## 5 Model quality [i](#)

### 5.1 Standard geometry [i](#)

Bond lengths and bond angles in the following residue types are not validated in this section: SO4, FAD, BRU

The Z score for a bond length (or angle) is the number of standard deviations the observed value is removed from the expected value. A bond length (or angle) with  $|Z| > 5$  is considered an outlier worth inspection. RMSZ is the root-mean-square of all Z scores of the bond lengths (or angles).

Mol	Chain	Bond lengths		Bond angles	
		RMSZ	# $ Z  > 5$	RMSZ	# $ Z  > 5$
1	A	1.04	1/1851 (0.1%)	0.96	4/2505 (0.2%)
1	B	1.02	0/1915	0.91	2/2594 (0.1%)
1	C	1.05	0/1895	0.91	5/2569 (0.2%)
1	D	1.01	1/1923 (0.1%)	0.91	0/2605
All	All	1.03	2/7584 (0.0%)	0.92	11/10273 (0.1%)

All (2) bond length outliers are listed below:

Mol	Chain	Res	Type	Atoms	Z	Observed(Å)	Ideal(Å)
1	D	229	GLU	CG-CD	5.35	1.59	1.51
1	A	91	SER	CB-OG	5.00	1.48	1.42

The worst 5 of 11 bond angle outliers are listed below:

Mol	Chain	Res	Type	Atoms	Z	Observed(°)	Ideal(°)
1	A	196	ARG	NE-CZ-NH1	-9.68	115.46	120.30
1	A	193	ARG	NE-CZ-NH2	-6.57	117.01	120.30
1	A	196	ARG	NE-CZ-NH2	6.31	123.45	120.30
1	C	207	ARG	NE-CZ-NH1	5.86	123.23	120.30
1	C	154	ARG	NE-CZ-NH2	-5.84	117.38	120.30

There are no chirality outliers.

There are no planarity outliers.

### 5.2 Too-close contacts [i](#)

In the following table, the Non-H and H(model) columns list the number of non-hydrogen atoms and hydrogen atoms in the chain respectively. The H(added) column lists the number of hydrogen atoms added and optimized by MolProbity. The Clashes column lists the number of clashes within

the asymmetric unit, whereas Symm-Clashes lists symmetry-related clashes.

Mol	Chain	Non-H	H(model)	H(added)	Clashes	Symm-Clashes
1	A	1813	0	1761	40	0
1	B	1874	0	1818	57	0
1	C	1854	0	1785	38	0
1	D	1881	0	1825	38	0
2	A	53	0	31	3	0
2	B	53	0	31	5	0
2	C	53	0	31	2	0
2	D	53	0	31	3	0
3	A	21	0	10	1	0
3	B	21	0	10	4	0
3	C	21	0	10	2	0
3	D	21	0	10	1	0
4	A	5	0	0	0	0
5	A	104	0	0	6	0
5	B	97	0	0	6	0
5	C	93	0	0	3	1
5	D	108	0	0	3	0
All	All	8125	0	7353	155	1

The all-atom clashscore is defined as the number of clashes found per 1000 atoms (including hydrogen atoms). The all-atom clashscore for this structure is 10.

The worst 5 of 155 close contacts within the same asymmetric unit are listed below, sorted by their clash magnitude.

Atom-1	Atom-2	Interatomic distance (Å)	Clash overlap (Å)
2:B:302:FAD:O1A	5:B:463:HOH:O	1.70	1.09
2:A:301:FAD:O1A	5:A:475:HOH:O	1.72	1.06
2:D:302:FAD:O1A	5:D:449:HOH:O	1.77	1.01
1:D:68:ASN:HD21	1:D:183:ALA:H	1.07	1.00
1:D:10:SER:HB3	1:D:108:VAL:O	1.61	0.99

All (1) symmetry-related close contacts are listed below. The label for Atom-2 includes the symmetry operator and encoded unit-cell translations to be applied.

Atom-1	Atom-2	Interatomic distance (Å)	Clash overlap (Å)
5:C:401:HOH:O	5:C:409:HOH:O[2_556]	2.04	0.16

## 5.3 Torsion angles [i](#)

### 5.3.1 Protein backbone [i](#)

In the following table, the Percentiles column shows the percent Ramachandran outliers of the chain as a percentile score with respect to all X-ray entries followed by that with respect to entries of similar resolution.

The Analysed column shows the number of residues for which the backbone conformation was analysed, and the total number of residues.

Mol	Chain	Analysed	Favoured	Allowed	Outliers	Percentiles	
1	A	224/239 (94%)	220 (98%)	4 (2%)	0	100	100
1	B	234/239 (98%)	225 (96%)	7 (3%)	2 (1%)	17	18
1	C	233/239 (98%)	222 (95%)	9 (4%)	2 (1%)	17	18
1	D	234/239 (98%)	228 (97%)	6 (3%)	0	100	100
All	All	925/956 (97%)	895 (97%)	26 (3%)	4 (0%)	34	40

All (4) Ramachandran outliers are listed below:

Mol	Chain	Res	Type
1	B	42	GLU
1	C	117	GLN
1	B	39	ALA
1	C	42	GLU

### 5.3.2 Protein sidechains [i](#)

In the following table, the Percentiles column shows the percent sidechain outliers of the chain as a percentile score with respect to all X-ray entries followed by that with respect to entries of similar resolution.

The Analysed column shows the number of residues for which the sidechain conformation was analysed, and the total number of residues.

Mol	Chain	Analysed	Rotameric	Outliers	Percentiles	
1	A	189/201 (94%)	182 (96%)	7 (4%)	34	45
1	B	196/201 (98%)	184 (94%)	12 (6%)	18	23
1	C	193/201 (96%)	182 (94%)	11 (6%)	20	26
1	D	197/201 (98%)	193 (98%)	4 (2%)	55	70
All	All	775/804 (96%)	741 (96%)	34 (4%)	28	37

5 of 34 residues with a non-rotameric sidechain are listed below:

Mol	Chain	Res	Type
1	C	135	GLN
1	C	166	ARG
1	D	143	ARG
1	B	110	ASP
1	B	100	ARG

Sometimes sidechains can be flipped to improve hydrogen bonding and reduce clashes. 5 of 16 such sidechains are listed below:

Mol	Chain	Res	Type
1	D	195	HIS
1	D	93	ASN
1	C	68	ASN
1	D	68	ASN
1	B	195	HIS

### 5.3.3 RNA [i](#)

There are no RNA molecules in this entry.

## 5.4 Non-standard residues in protein, DNA, RNA chains [i](#)

There are no non-standard protein/DNA/RNA residues in this entry.

## 5.5 Carbohydrates [i](#)

There are no monosaccharides in this entry.

## 5.6 Ligand geometry [i](#)

9 ligands are modelled in this entry.

In the following table, the Counts columns list the number of bonds (or angles) for which Mogul statistics could be retrieved, the number of bonds (or angles) that are observed in the model and the number of bonds (or angles) that are defined in the Chemical Component Dictionary. The Link column lists molecule types, if any, to which the group is linked. The Z score for a bond length (or angle) is the number of standard deviations the observed value is removed from the expected value. A bond length (or angle) with  $|Z| > 2$  is considered an outlier worth inspection. RMSZ is the root-mean-square of all Z scores of the bond lengths (or angles).

Mol	Type	Chain	Res	Link	Bond lengths			Bond angles		
					Counts	RMSZ	# Z  > 2	Counts	RMSZ	# Z  > 2
3	BRU	A	302	-	22,22,22	1.58	3 (13%)	33,33,33	2.54	12 (36%)
2	FAD	B	302	-	53,58,58	1.58	11 (20%)	68,89,89	1.88	19 (27%)
3	BRU	C	302	-	22,22,22	1.39	3 (13%)	33,33,33	2.98	11 (33%)
3	BRU	D	301	-	22,22,22	1.62	6 (27%)	33,33,33	2.97	14 (42%)
3	BRU	B	301	-	22,22,22	1.61	3 (13%)	33,33,33	2.17	11 (33%)
4	SO4	A	303	-	4,4,4	0.12	0	6,6,6	0.56	0
2	FAD	C	301	-	53,58,58	1.78	10 (18%)	68,89,89	1.72	17 (25%)
2	FAD	D	302	-	53,58,58	1.79	9 (16%)	68,89,89	1.77	15 (22%)
2	FAD	A	301	-	53,58,58	1.61	11 (20%)	68,89,89	2.12	25 (36%)

In the following table, the Chirals column lists the number of chiral outliers, the number of chiral centers analysed, the number of these observed in the model and the number defined in the Chemical Component Dictionary. Similar counts are reported in the Torsion and Rings columns. '-' means no outliers of that kind were identified.

Mol	Type	Chain	Res	Link	Chirals	Torsions	Rings
3	BRU	A	302	-	-	0/10/22/22	0/2/2/2
2	FAD	B	302	-	-	4/30/50/50	0/6/6/6
3	BRU	C	302	-	-	1/10/22/22	0/2/2/2
3	BRU	D	301	-	-	2/10/22/22	0/2/2/2
3	BRU	B	301	-	-	0/10/22/22	0/2/2/2
2	FAD	C	301	-	-	1/30/50/50	0/6/6/6
2	FAD	D	302	-	-	7/30/50/50	0/6/6/6
2	FAD	A	301	-	-	10/30/50/50	0/6/6/6

The worst 5 of 56 bond length outliers are listed below:

Mol	Chain	Res	Type	Atoms	Z	Observed(Å)	Ideal(Å)
2	D	302	FAD	C4X-N5	6.14	1.42	1.30
2	C	301	FAD	C4X-N5	6.08	1.42	1.30
2	D	302	FAD	C10-N1	5.51	1.44	1.33
2	A	301	FAD	C4X-N5	4.98	1.40	1.30
2	B	302	FAD	C10-N1	4.25	1.41	1.33

The worst 5 of 124 bond angle outliers are listed below:

Mol	Chain	Res	Type	Atoms	Z	Observed(°)	Ideal(°)
3	D	301	BRU	C4-N3-C2	-7.03	118.25	127.35
3	C	302	BRU	C4-N3-C2	-6.87	118.45	127.35

Continued on next page...

*Continued from previous page...*

Mol	Chain	Res	Type	Atoms	Z	Observed(°)	Ideal(°)
3	D	301	BRU	N3-C2-N1	6.72	123.81	114.89
2	B	302	FAD	O5B-PA-O1A	-6.38	84.15	109.07
2	D	302	FAD	O5B-PA-O1A	-6.35	84.27	109.07

There are no chirality outliers.

5 of 25 torsion outliers are listed below:

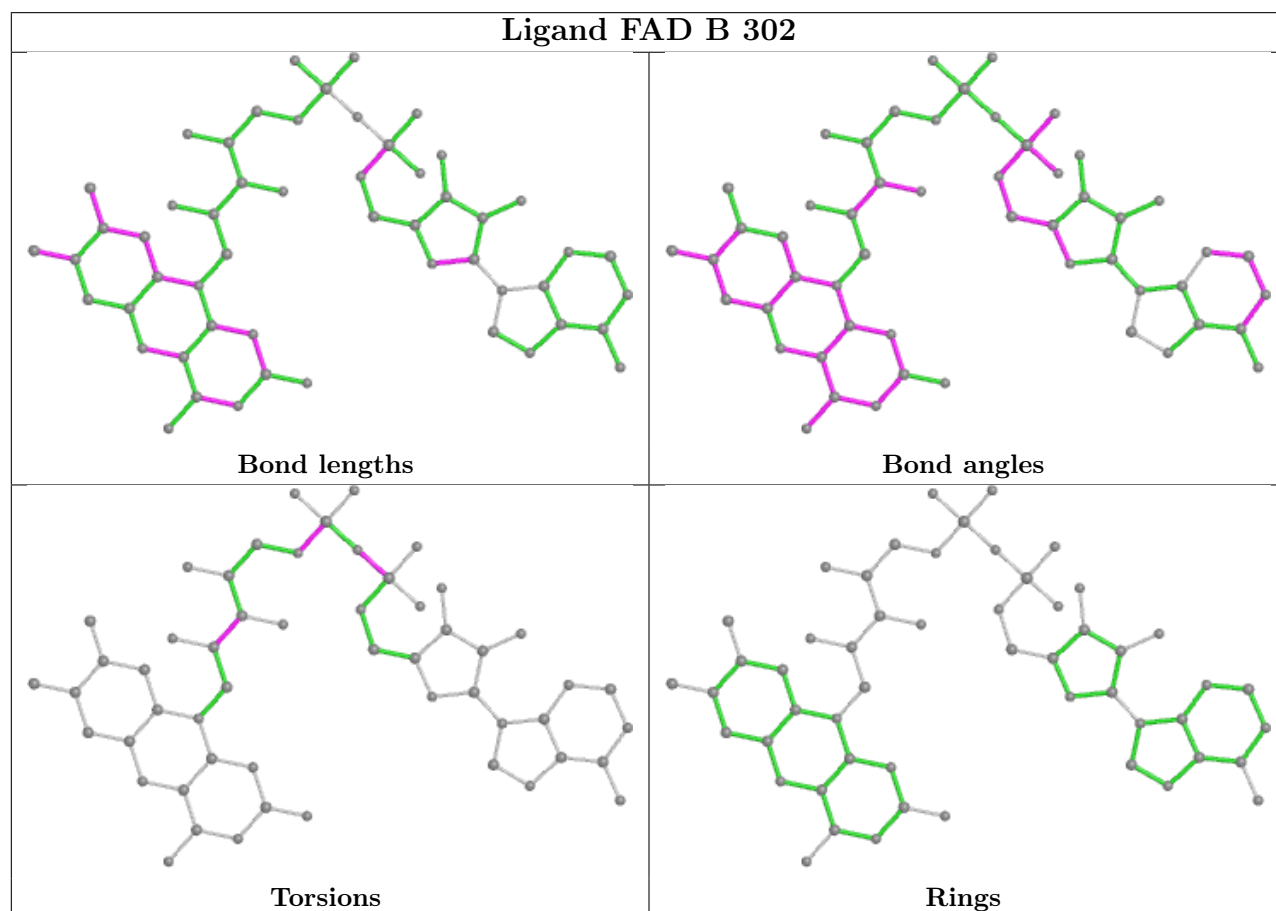
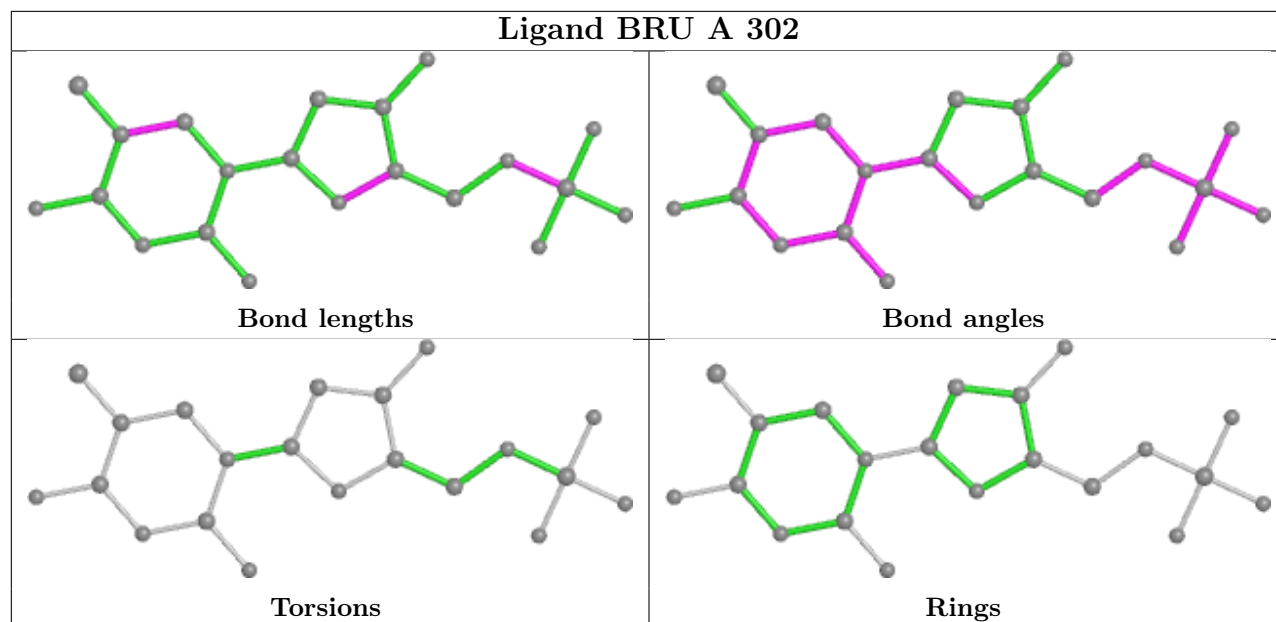
Mol	Chain	Res	Type	Atoms
2	A	301	FAD	C5'-O5'-P-O2P
2	A	301	FAD	C5'-O5'-P-O3P
2	B	302	FAD	C1'-C2'-C3'-O3'
2	B	302	FAD	C1'-C2'-C3'-C4'
2	D	302	FAD	C3'-C4'-C5'-O5'

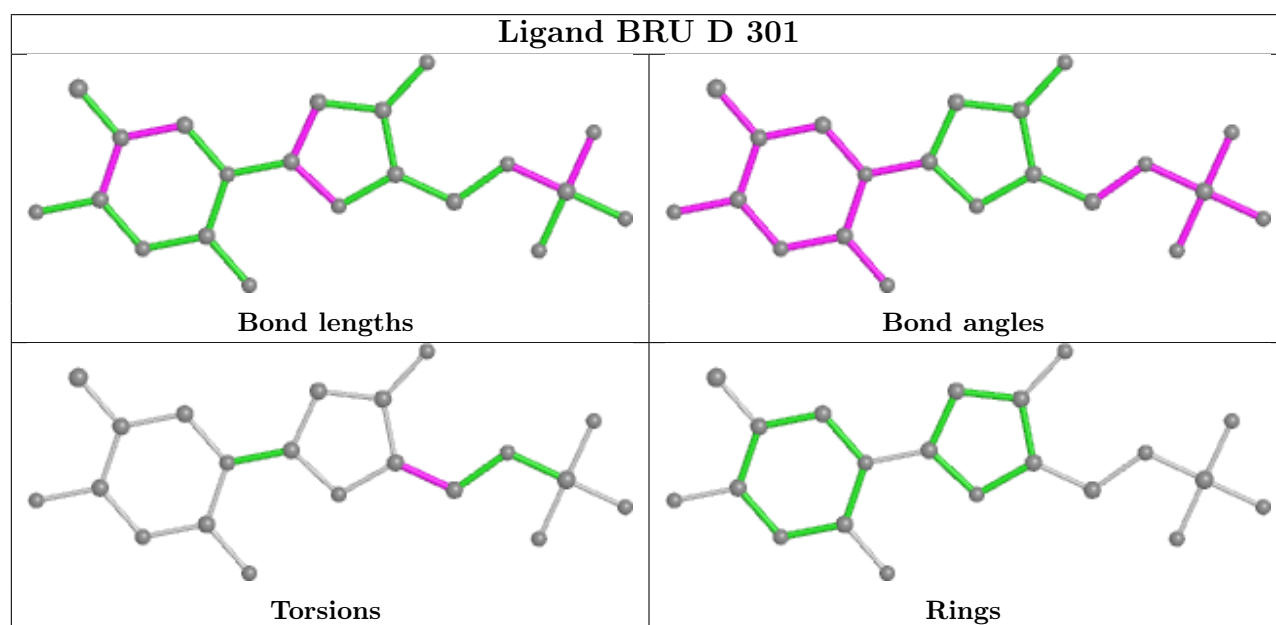
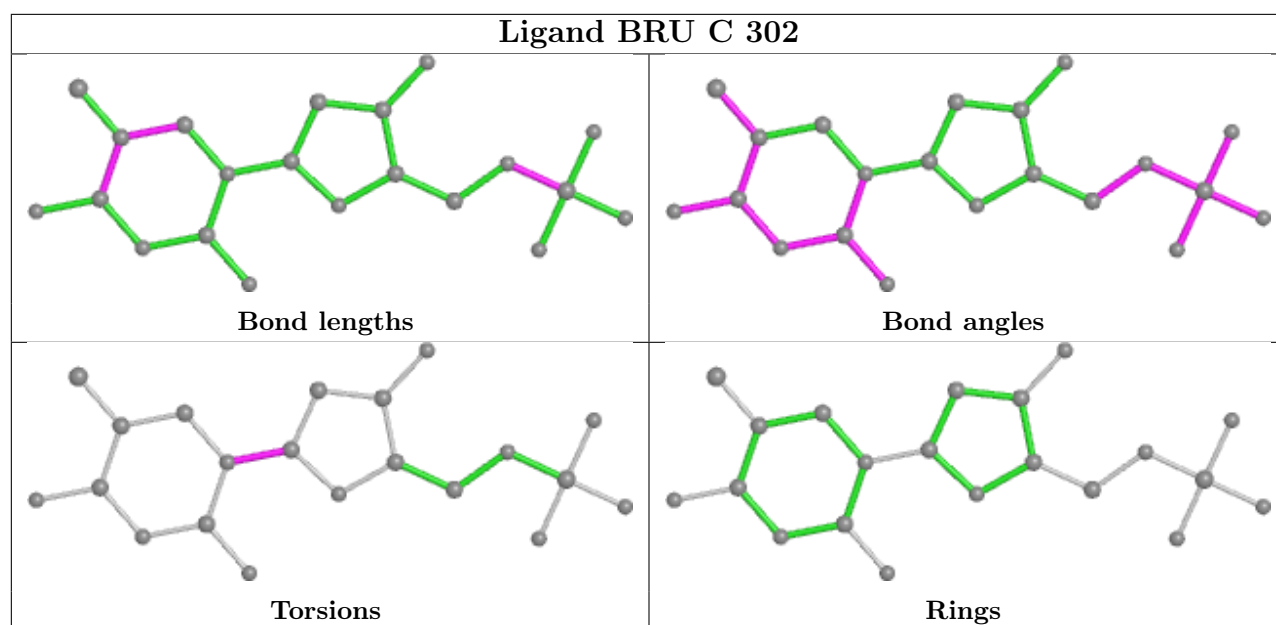
There are no ring outliers.

8 monomers are involved in 21 short contacts:

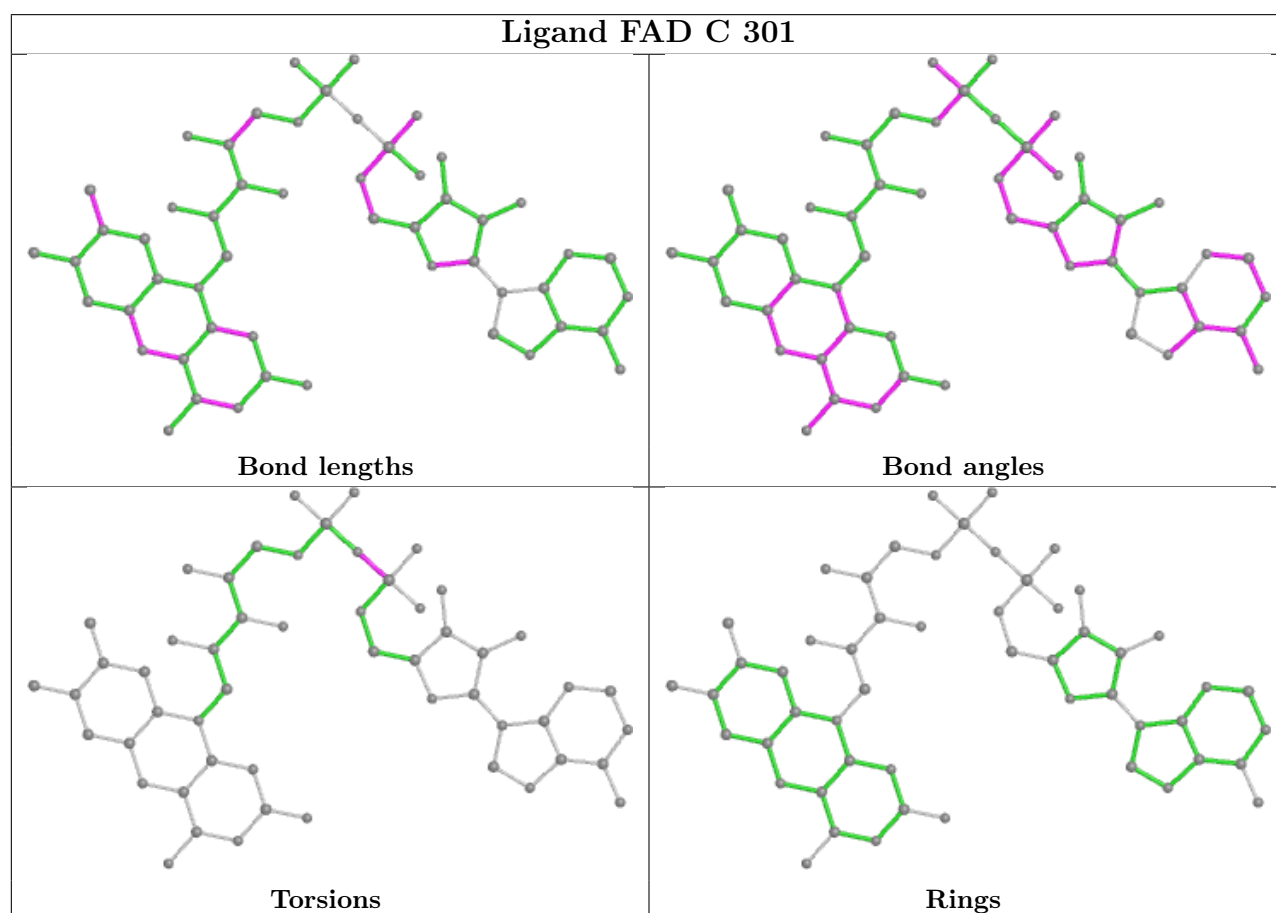
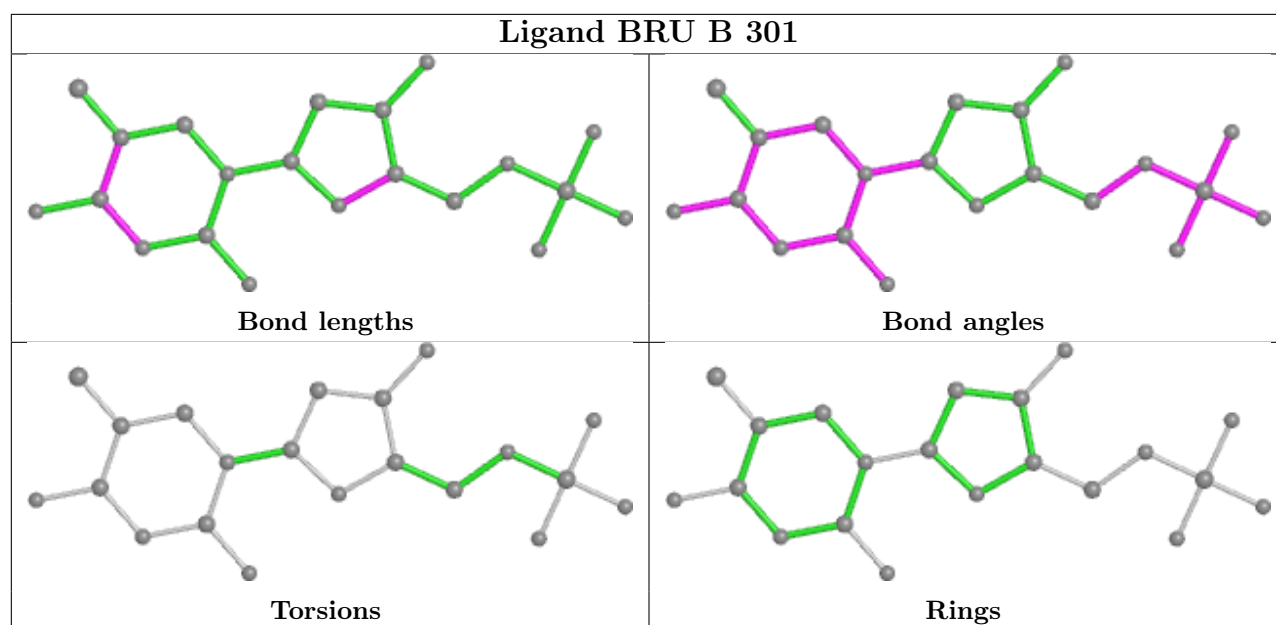
Mol	Chain	Res	Type	Clashes	Symm-Clashes
3	A	302	BRU	1	0
2	B	302	FAD	5	0
3	C	302	BRU	2	0
3	D	301	BRU	1	0
3	B	301	BRU	4	0
2	C	301	FAD	2	0
2	D	302	FAD	3	0
2	A	301	FAD	3	0

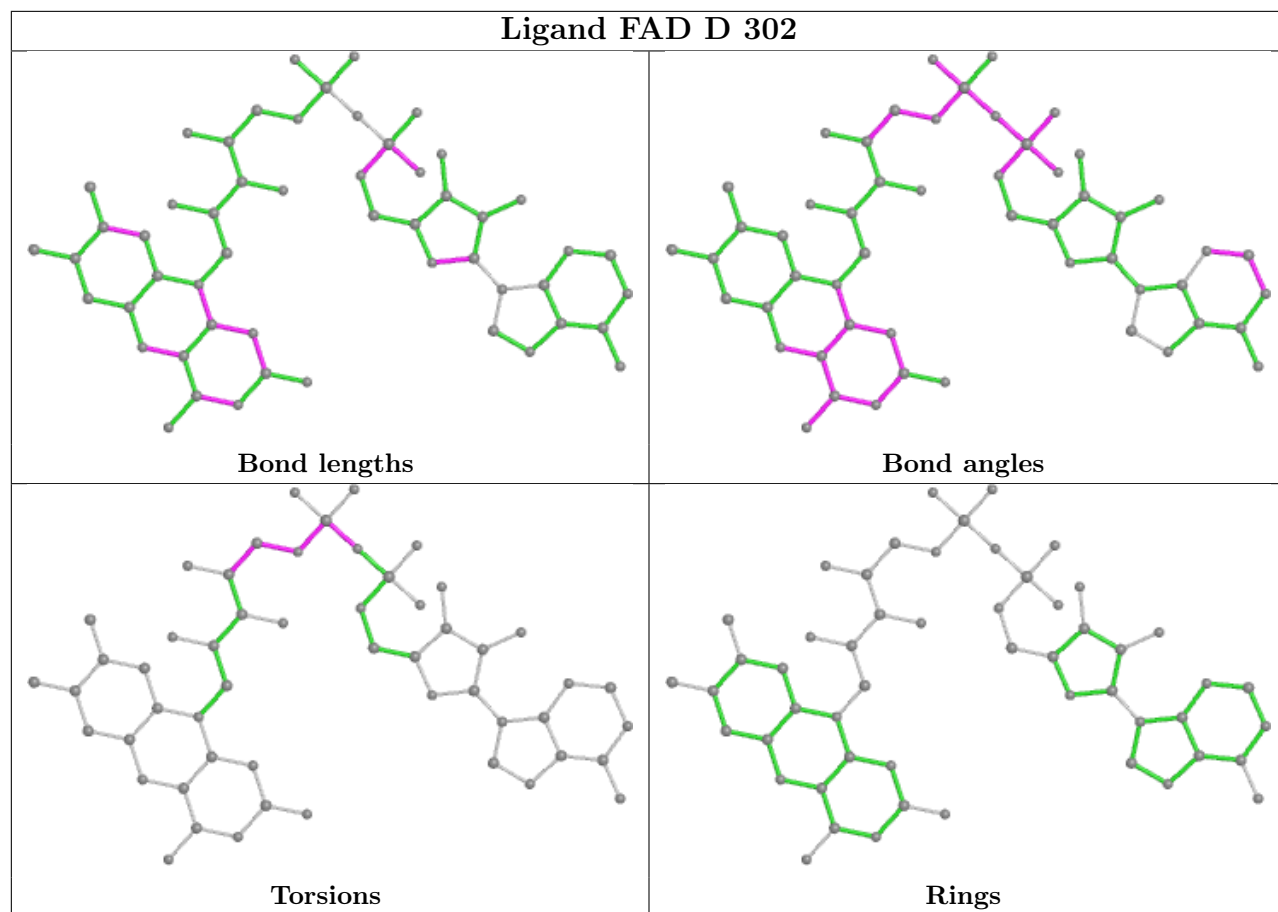
The following is a two-dimensional graphical depiction of Mogul quality analysis of bond lengths, bond angles, torsion angles, and ring geometry for all instances of the Ligand of Interest. In addition, ligands with molecular weight > 250 and outliers as shown on the validation Tables will also be included. For torsion angles, if less than 5% of the Mogul distribution of torsion angles is within 10 degrees of the torsion angle in question, then that torsion angle is considered an outlier. Any bond that is central to one or more torsion angles identified as an outlier by Mogul will be highlighted in the graph. For rings, the root-mean-square deviation (RMSD) between the ring in question and similar rings identified by Mogul is calculated over all ring torsion angles. If the average RMSD is greater than 60 degrees and the minimal RMSD between the ring in question and any Mogul-identified rings is also greater than 60 degrees, then that ring is considered an outlier. The outliers are highlighted in purple. The color gray indicates Mogul did not find sufficient equivalents in the CSD to analyse the geometry.

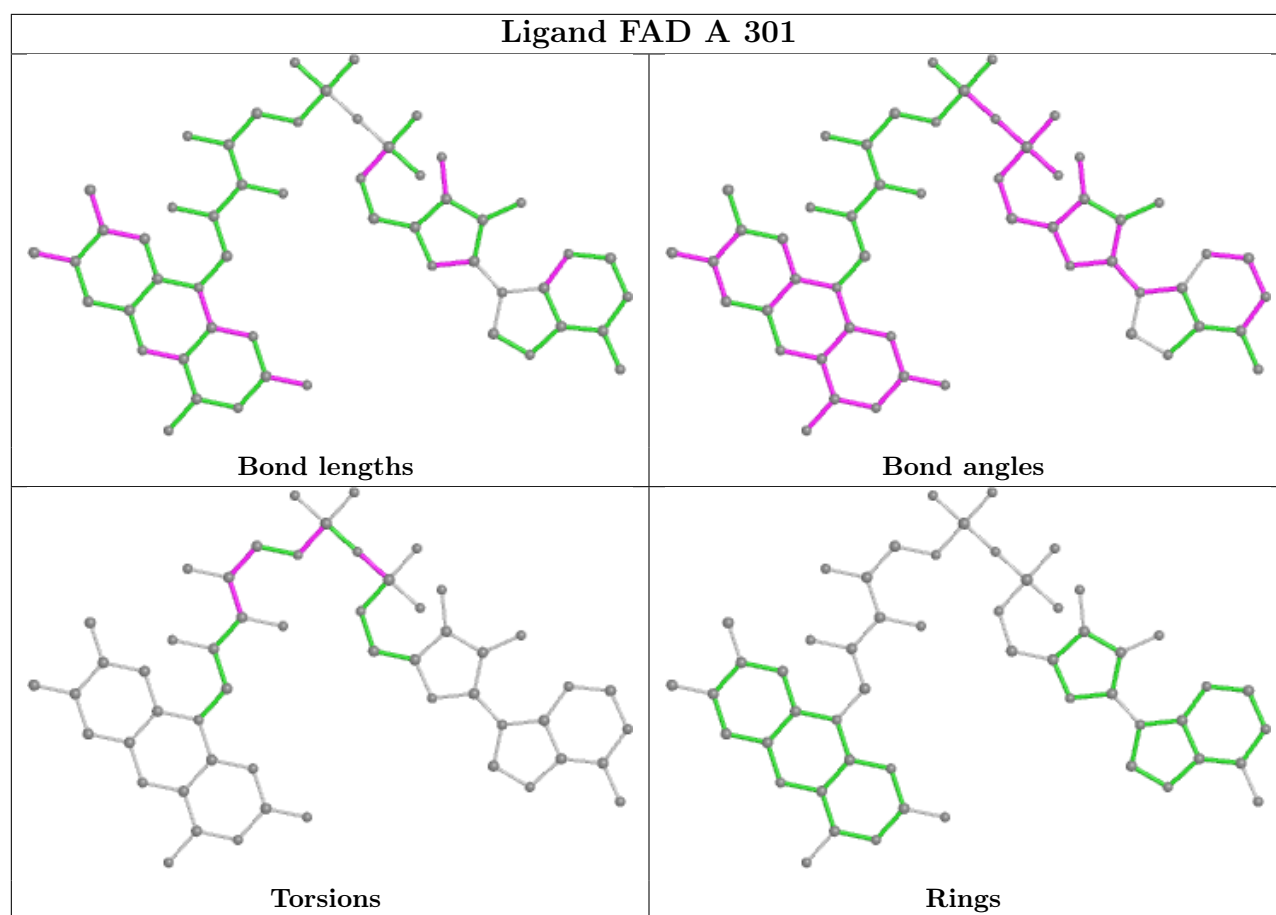












## 5.7 Other polymers [i](#)

There are no such residues in this entry.

## 5.8 Polymer linkage issues [i](#)

There are no chain breaks in this entry.

## 6 Fit of model and data [i](#)

### 6.1 Protein, DNA and RNA chains [i](#)

In the following table, the column labelled ‘#RSRZ > 2’ contains the number (and percentage) of RSRZ outliers, followed by percent RSRZ outliers for the chain as percentile scores relative to all X-ray entries and entries of similar resolution. The OWAB column contains the minimum, median, 95<sup>th</sup> percentile and maximum values of the occupancy-weighted average B-factor per residue. The column labelled ‘Q < 0.9’ lists the number of (and percentage) of residues with an average occupancy less than 0.9.

Mol	Chain	Analysed	<RSRZ>	#RSRZ>2	OWAB(Å <sup>2</sup> )	Q<0.9
1	A	229/239 (95%)	0.06	18 (7%) 12 16	12, 24, 74, 95	0
1	B	235/239 (98%)	-0.05	21 (8%) 9 12	13, 26, 67, 77	0
1	C	234/239 (97%)	-0.09	19 (8%) 12 15	13, 26, 72, 83	0
1	D	235/239 (98%)	-0.22	12 (5%) 28 33	15, 26, 62, 76	0
All	All	933/956 (97%)	-0.07	70 (7%) 14 18	12, 25, 69, 95	0

The worst 5 of 70 RSRZ outliers are listed below:

Mol	Chain	Res	Type	RSRZ
1	A	129	GLY	10.7
1	A	124	TYR	9.6
1	A	128	GLY	8.4
1	B	43	LEU	7.8
1	A	127	VAL	6.9

### 6.2 Non-standard residues in protein, DNA, RNA chains [i](#)

There are no non-standard protein/DNA/RNA residues in this entry.

### 6.3 Carbohydrates [i](#)

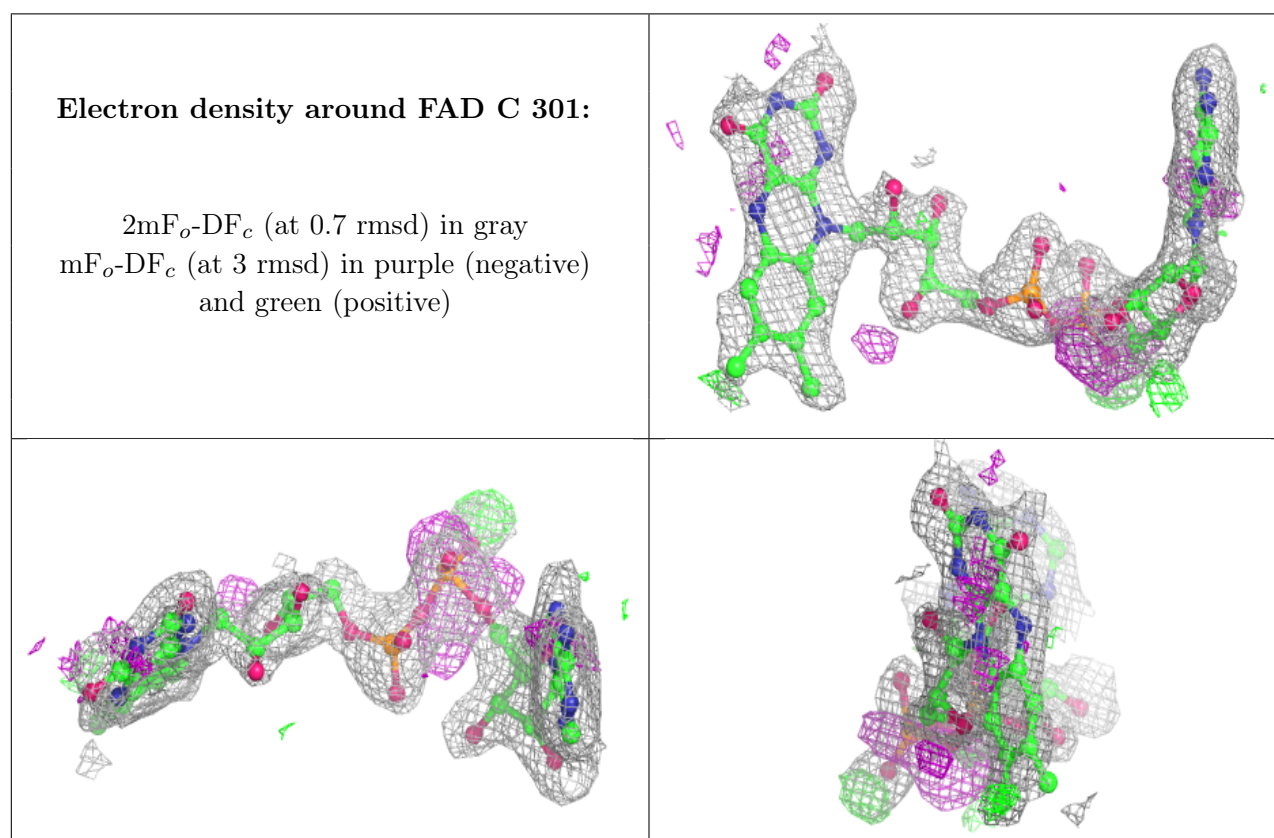
There are no monosaccharides in this entry.

### 6.4 Ligands [i](#)

In the following table, the Atoms column lists the number of modelled atoms in the group and the number defined in the chemical component dictionary. The B-factors column lists the minimum, median, 95<sup>th</sup> percentile and maximum values of B factors of atoms in the group. The column labelled ‘Q < 0.9’ lists the number of atoms with occupancy less than 0.9.

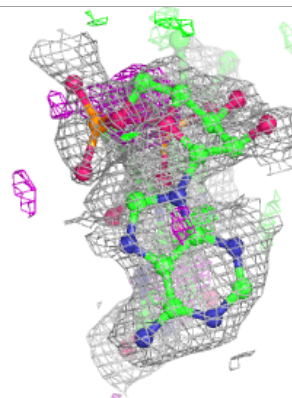
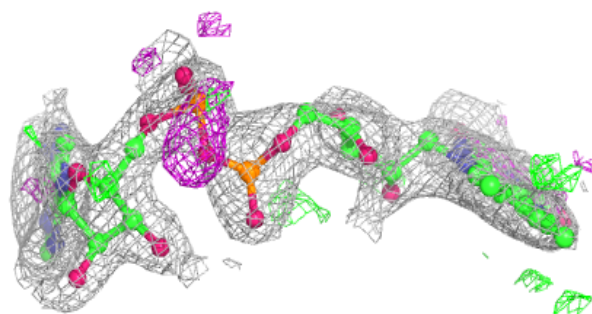
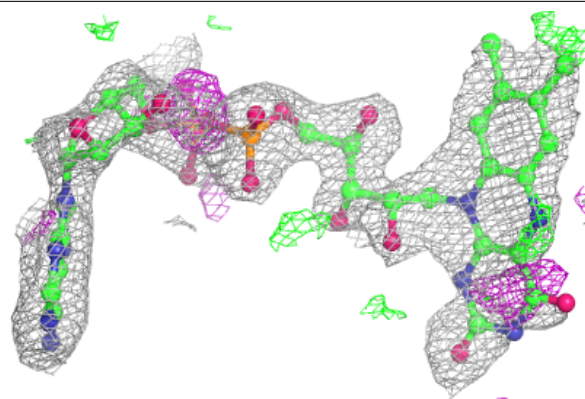
Mol	Type	Chain	Res	Atoms	RSCC	RSR	B-factors( $\text{\AA}^2$ )	Q<0.9
2	FAD	C	301	53/53	0.89	0.16	29,42,51,52	0
2	FAD	D	302	53/53	0.89	0.17	32,49,54,56	0
2	FAD	B	302	53/53	0.91	0.16	24,43,50,56	0
2	FAD	A	301	53/53	0.94	0.11	17,34,40,43	0
3	BRU	B	301	21/21	0.96	0.11	12,17,21,29	0
3	BRU	C	302	21/21	0.96	0.14	19,25,31,39	0
3	BRU	A	302	21/21	0.97	0.13	13,18,23,30	0
4	SO4	A	303	5/5	0.97	0.10	54,55,56,58	0
3	BRU	D	301	21/21	0.98	0.10	16,22,25,36	0

The following is a graphical depiction of the model fit to experimental electron density of all instances of the Ligand of Interest. In addition, ligands with molecular weight > 250 and outliers as shown on the geometry validation Tables will also be included. Each fit is shown from different orientation to approximate a three-dimensional view.

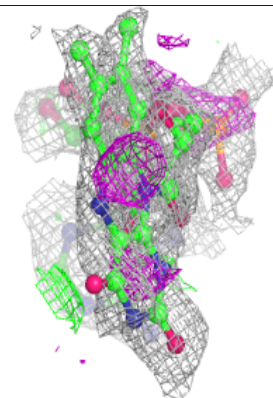
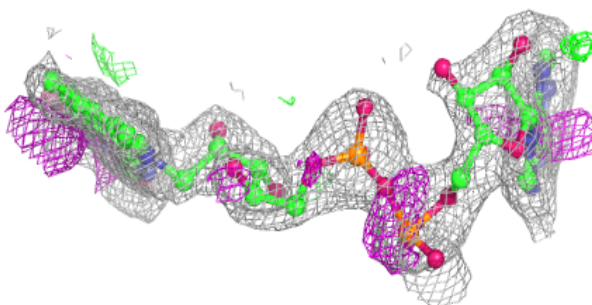
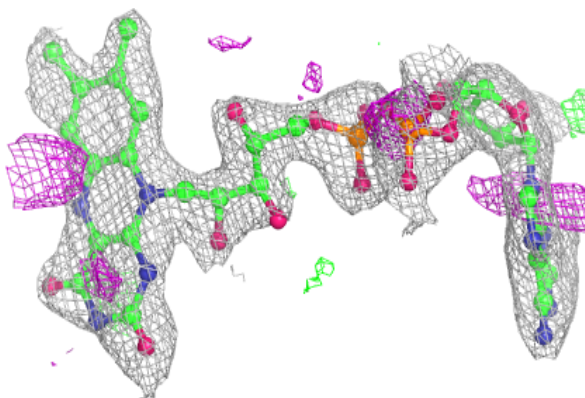


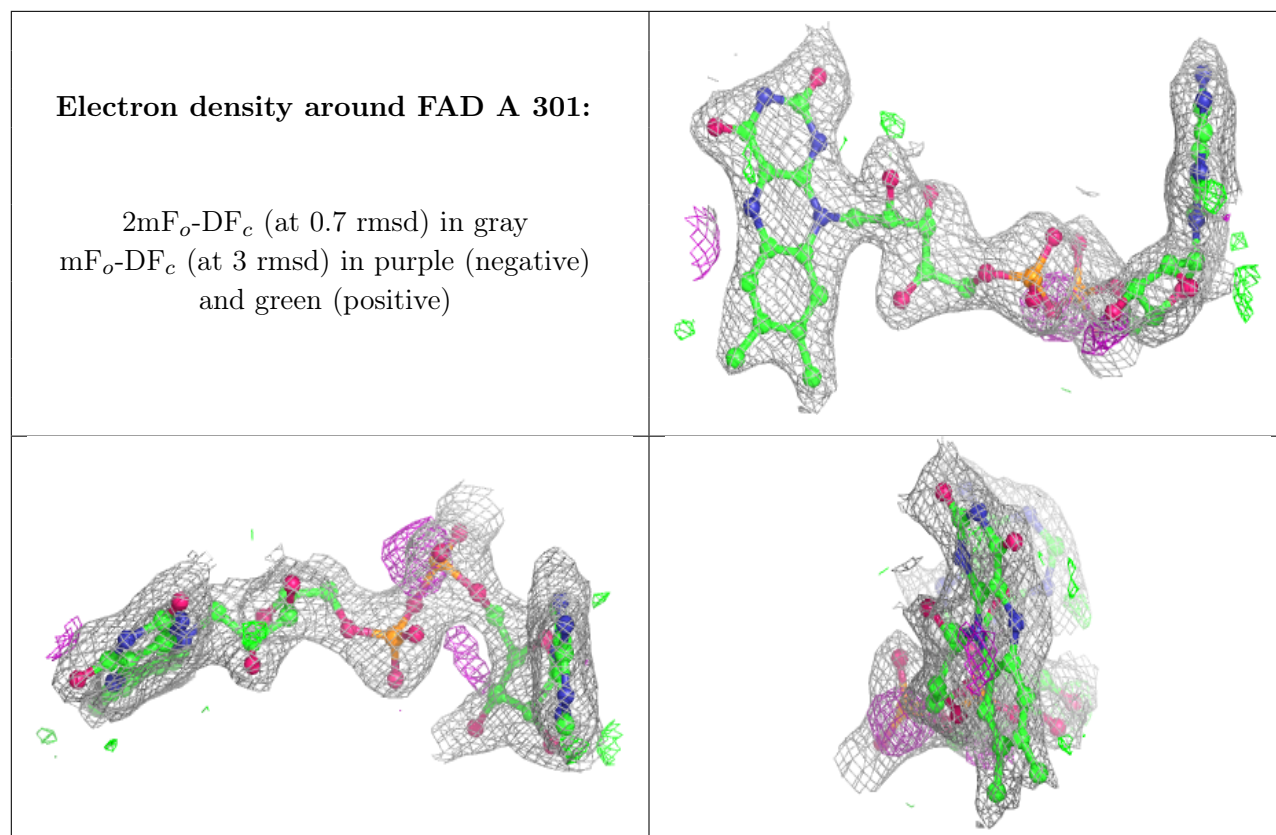
**Electron density around FAD D 302:**

$2mF_o-DF_c$  (at 0.7 rmsd) in gray  
 $mF_o-DF_c$  (at 3 rmsd) in purple (negative)  
and green (positive)

**Electron density around FAD B 302:**

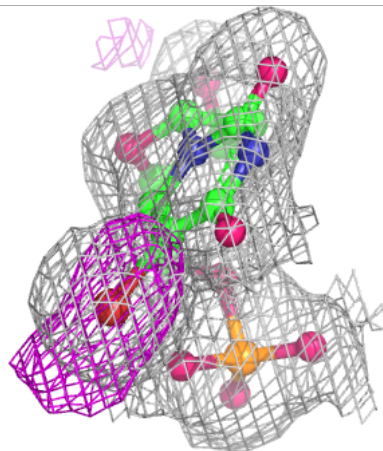
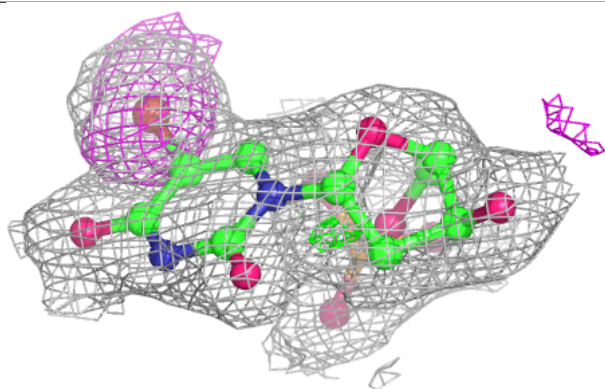
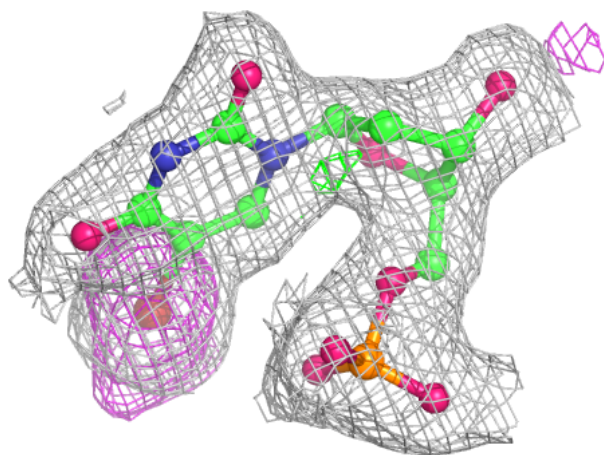
$2mF_o-DF_c$  (at 0.7 rmsd) in gray  
 $mF_o-DF_c$  (at 3 rmsd) in purple (negative)  
and green (positive)





**Electron density around BRU B 301:**

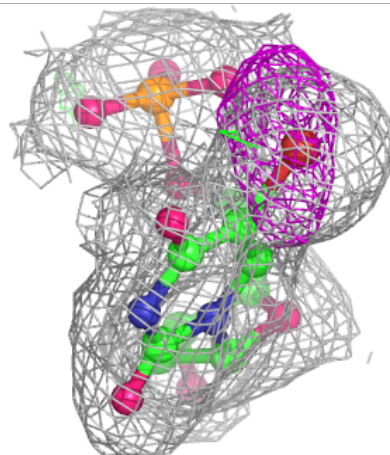
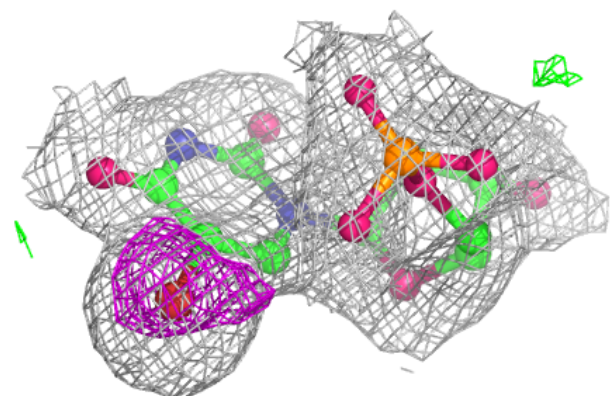
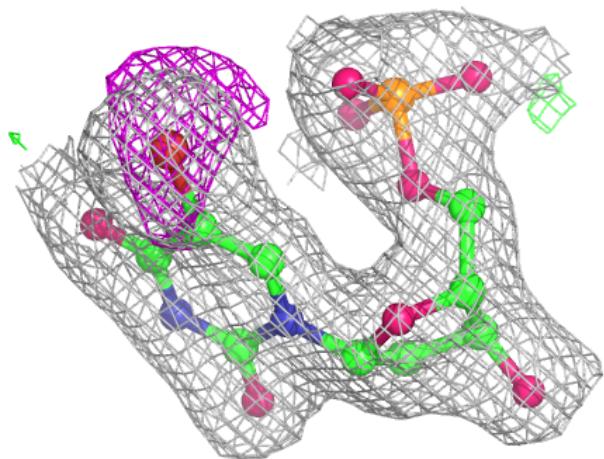
$2mF_o-DF_c$  (at 0.7 rmsd) in gray  
 $mF_o-DF_c$  (at 3 rmsd) in purple (negative)  
and green (positive)





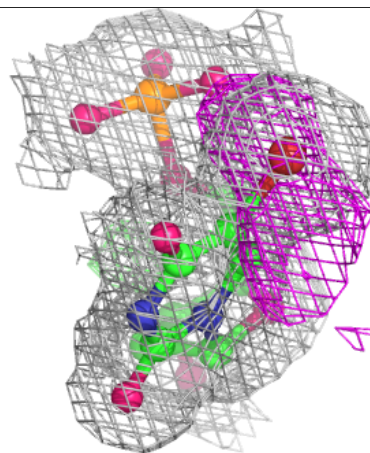
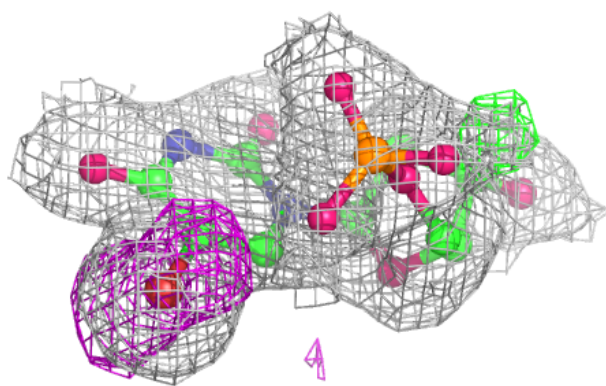
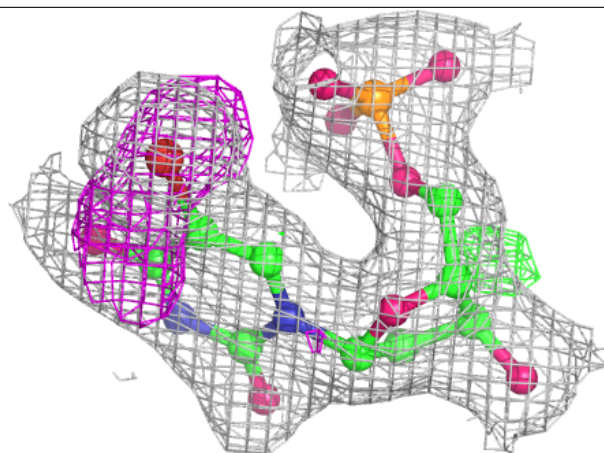
**Electron density around BRU C 302:**

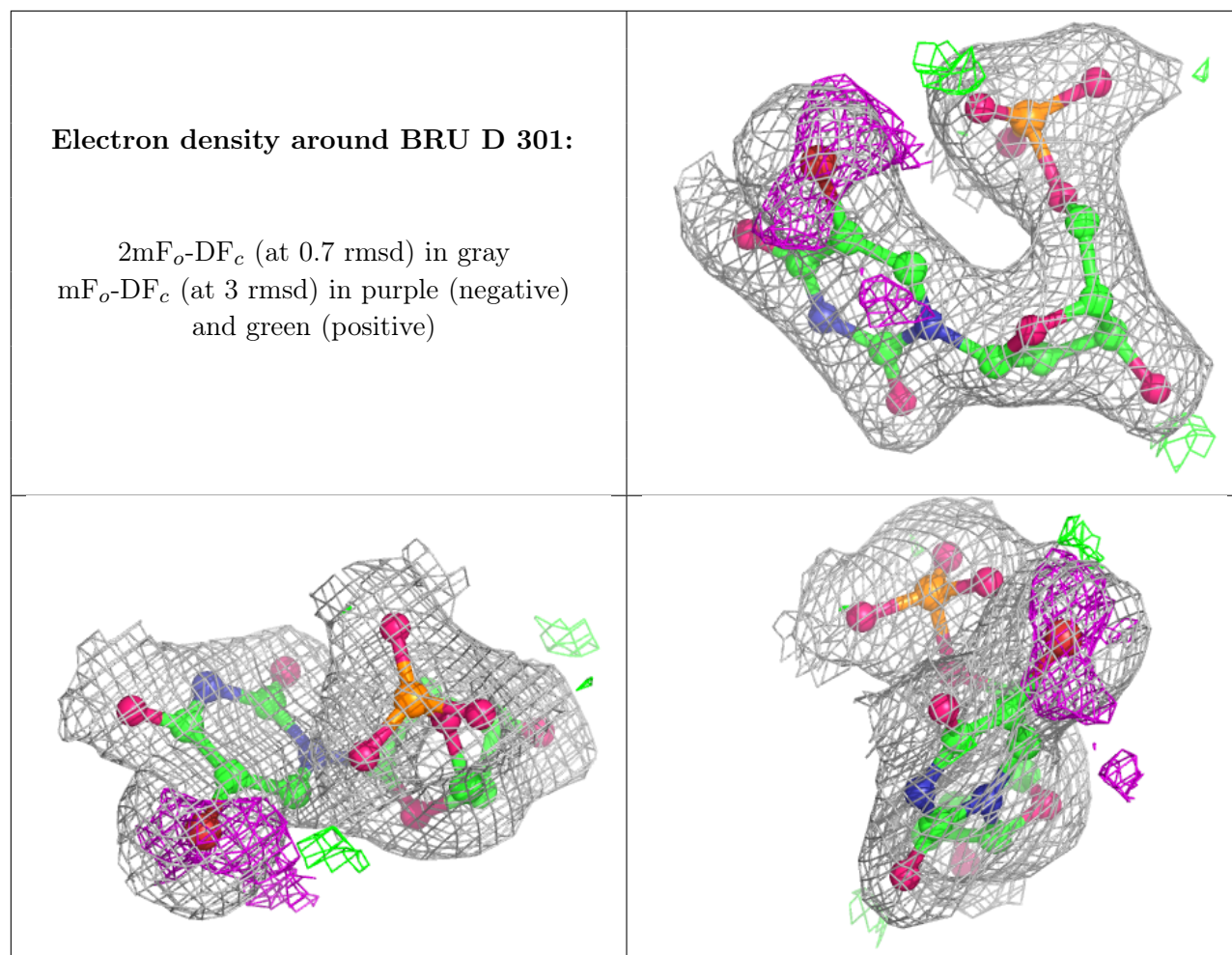
$2mF_o-DF_c$  (at 0.7 rmsd) in gray  
 $mF_o-DF_c$  (at 3 rmsd) in purple (negative)  
and green (positive)



**Electron density around BRU A 302:**

$2mF_o-DF_c$  (at 0.7 rmsd) in gray  
 $mF_o-DF_c$  (at 3 rmsd) in purple (negative)  
and green (positive)





## 6.5 Other polymers [\(i\)](#)

There are no such residues in this entry.