



# Full wwPDB X-ray Structure Validation Report ⓘ

May 26, 2020 – 08:05 am BST

PDB ID : 2OXY  
Title : Protein kinase CK2 in complex with tetrabromobenzoimidazole derivatives  
K17, K22 and K32  
Authors : Battistutta, R.; Zanotti, G.; Cendron, L.  
Deposited on : 2007-02-21  
Resolution : 1.81 Å(reported)

This is a Full wwPDB X-ray Structure Validation Report for a publicly released PDB entry.

We welcome your comments at [validation@mail.wwpdb.org](mailto:validation@mail.wwpdb.org)

A user guide is available at

<https://www.wwpdb.org/validation/2017/XrayValidationReportHelp>

with specific help available everywhere you see the ⓘ symbol.

---

The following versions of software and data (see [references ⓘ](#)) were used in the production of this report:

MolProbity : 4.02b-467  
Mogul : 1.8.5 (274361), CSD as541be (2020)  
Xtriage (Phenix) : 1.13  
EDS : 2.11  
buster-report : 1.1.7 (2018)  
Percentile statistics : 20191225.v01 (using entries in the PDB archive December 25th 2019)  
Refmac : 5.8.0158  
CCP4 : 7.0.044 (Gargrove)  
Ideal geometry (proteins) : Engh & Huber (2001)  
Ideal geometry (DNA, RNA) : Parkinson et al. (1996)  
Validation Pipeline (wwPDB-VP) : 2.11

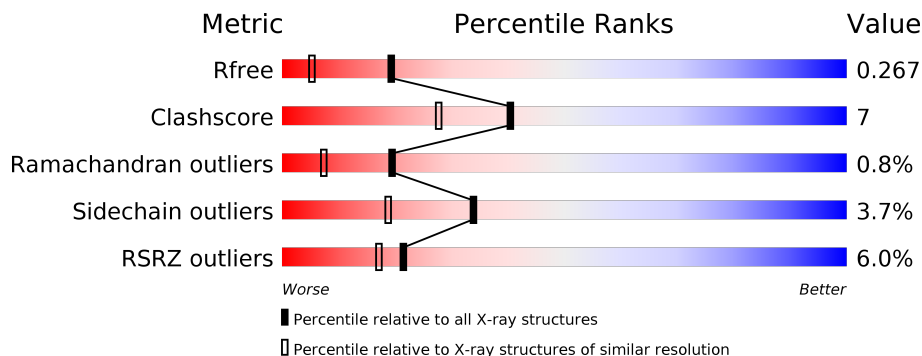
# 1 Overall quality at a glance

The following experimental techniques were used to determine the structure:

*X-RAY DIFFRACTION*

The reported resolution of this entry is 1.81 Å.

Percentile scores (ranging between 0-100) for global validation metrics of the entry are shown in the following graphic. The table shows the number of entries on which the scores are based.



Metric	Whole archive (#Entries)	Similar resolution (#Entries, resolution range(Å))
$R_{free}$	130704	7484 (1.84-1.80)
Clashscore	141614	8401 (1.84-1.80)
Ramachandran outliers	138981	8290 (1.84-1.80)
Sidechain outliers	138945	8290 (1.84-1.80)
RSRZ outliers	127900	7371 (1.84-1.80)

The table below summarises the geometric issues observed across the polymeric chains and their fit to the electron density. The red, orange, yellow and green segments on the lower bar indicate the fraction of residues that contain outliers for  $\geq 3$ , 2, 1 and 0 types of geometric quality criteria respectively. A grey segment represents the fraction of residues that are not modelled. The numeric value for each fraction is indicated below the corresponding segment, with a dot representing fractions  $\leq 5\%$ . The upper red bar (where present) indicates the fraction of residues that have poor fit to the electron density. The numeric value is given above the bar.

Mol	Chain	Length	Quality of chain
1	A	332	
1	B	332	

## 2 Entry composition [i](#)

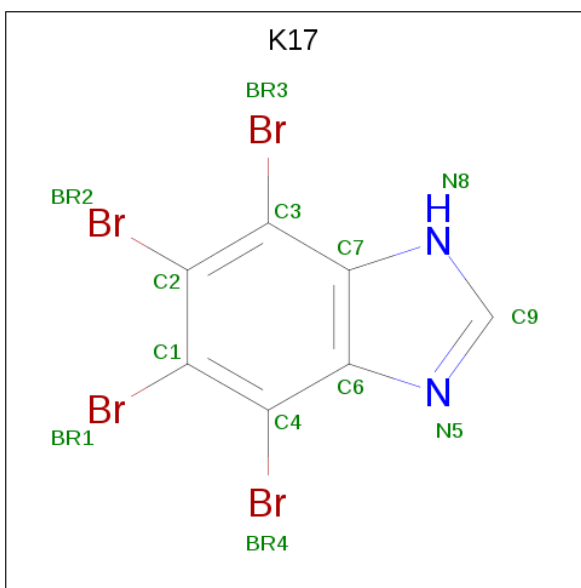
There are 3 unique types of molecules in this entry. The entry contains 6035 atoms, of which 0 are hydrogens and 0 are deuteriums.

In the tables below, the ZeroOcc column contains the number of atoms modelled with zero occupancy, the AltConf column contains the number of residues with at least one atom in alternate conformation and the Trace column contains the number of residues modelled with at most 2 atoms.

- Molecule 1 is a protein called Casein kinase II subunit alpha.

Mol	Chain	Residues	Atoms					ZeroOcc	AltConf	Trace
			Total	C	N	O	S			
1	A	327	Total 2727	C 1757	N 470	O 489	S 11	0	0	0
1	B	327	Total 2727	C 1757	N 470	O 489	S 11	0	0	0

- Molecule 2 is 4,5,6,7-TETRABROMO-BENZIMIDAZOLE (three-letter code: K17) (formula:  $C_7H_2Br_4N_2$ ).



Mol	Chain	Residues	Atoms				ZeroOcc	AltConf
			Total	Br	C	N		
2	A	1	Total 13	Br 4	C 7	N 2	0	0
2	B	1	Total 13	Br 4	C 7	N 2	0	0

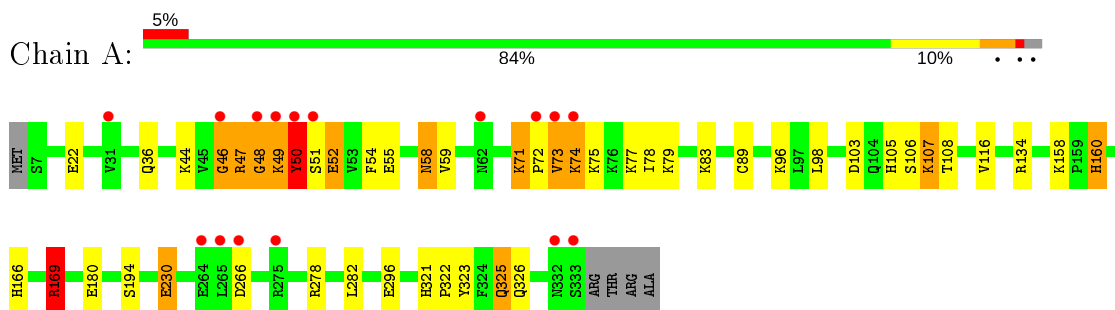
- Molecule 3 is water.

<b>Mol</b>	<b>Chain</b>	<b>Residues</b>	<b>Atoms</b>		<b>ZeroOcc</b>	<b>AltConf</b>
3	A	295	Total 295	O 295	0	0
3	B	260	Total 260	O 260	0	0

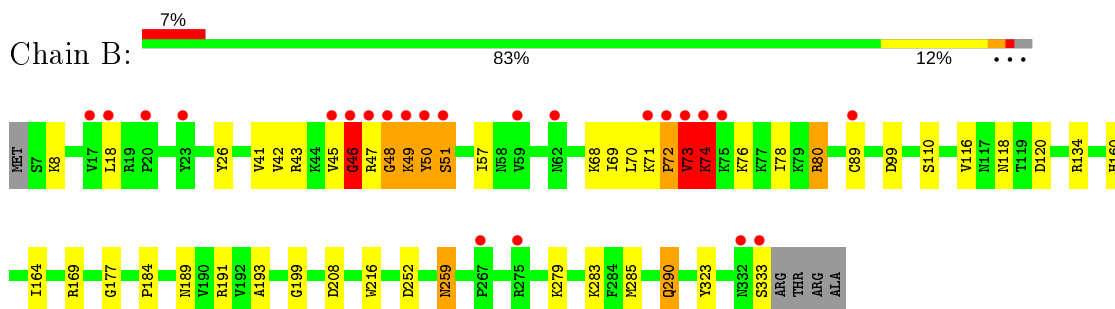
### 3 Residue-property plots [i](#)

These plots are drawn for all protein, RNA and DNA chains in the entry. The first graphic for a chain summarises the proportions of the various outlier classes displayed in the second graphic. The second graphic shows the sequence view annotated by issues in geometry and electron density. Residues are color-coded according to the number of geometric quality criteria for which they contain at least one outlier: green = 0, yellow = 1, orange = 2 and red = 3 or more. A red dot above a residue indicates a poor fit to the electron density ( $RSRZ > 2$ ). Stretches of 2 or more consecutive residues without any outlier are shown as a green connector. Residues present in the sample, but not in the model, are shown in grey.

- Molecule 1: Casein kinase II subunit alpha



- Molecule 1: Casein kinase II subunit alpha



## 4 Data and refinement statistics

Property	Value	Source
Space group	P 1	Depositor
Cell constants a, b, c, $\alpha$ , $\beta$ , $\gamma$	48.29Å 57.44Å 62.47Å 91.90° 103.86° 97.51°	Depositor
Resolution (Å)	60.52 – 1.81 30.50 – 1.81	Depositor EDS
% Data completeness (in resolution range)	93.9 (60.52-1.81) 93.8 (30.50-1.81)	Depositor EDS
$R_{merge}$	0.06	Depositor
$R_{sym}$	(Not available)	Depositor
$\langle I/\sigma(I) \rangle$ <sup>1</sup>	2.72 (at 1.82Å)	Xtrriage
Refinement program	REFMAC 5.2.0019	Depositor
R, $R_{free}$	0.207 , 0.269 0.206 , 0.267	Depositor DCC
$R_{free}$ test set	2776 reflections (5.05%)	wwPDB-VP
Wilson B-factor (Å <sup>2</sup> )	15.6	Xtrriage
Anisotropy	0.118	Xtrriage
Bulk solvent $k_{sol}$ (e/Å <sup>3</sup> ), $B_{sol}$ (Å <sup>2</sup> )	0.37 , 47.7	EDS
L-test for twinning <sup>2</sup>	$\langle  L  \rangle = 0.49$ , $\langle L^2 \rangle = 0.33$	Xtrriage
Estimated twinning fraction	No twinning to report.	Xtrriage
$F_o, F_c$ correlation	0.93	EDS
Total number of atoms	6035	wwPDB-VP
Average B, all atoms (Å <sup>2</sup> )	15.0	wwPDB-VP

Xtrriage's analysis on translational NCS is as follows: *The largest off-origin peak in the Patterson function is 7.60% of the height of the origin peak. No significant pseudotranslation is detected.*

<sup>1</sup>Intensities estimated from amplitudes.

<sup>2</sup>Theoretical values of  $\langle |L| \rangle$ ,  $\langle L^2 \rangle$  for acentric reflections are 0.5, 0.333 respectively for untwinned datasets, and 0.375, 0.2 for perfectly twinned datasets.

## 5 Model quality [i](#)

### 5.1 Standard geometry [i](#)

Bond lengths and bond angles in the following residue types are not validated in this section: K17

The Z score for a bond length (or angle) is the number of standard deviations the observed value is removed from the expected value. A bond length (or angle) with  $|Z| > 5$  is considered an outlier worth inspection. RMSZ is the root-mean-square of all Z scores of the bond lengths (or angles).

Mol	Chain	Bond lengths		Bond angles	
		RMSZ	# Z  >5	RMSZ	# Z  >5
1	A	0.92	1/2795 (0.0%)	0.88	3/3778 (0.1%)
1	B	0.97	2/2795 (0.1%)	0.94	8/3778 (0.2%)
All	All	0.95	3/5590 (0.1%)	0.91	11/7556 (0.1%)

Chiral center outliers are detected by calculating the chiral volume of a chiral center and verifying if the center is modelled as a planar moiety or with the opposite hand. A planarity outlier is detected by checking planarity of atoms in a peptide group, atoms in a mainchain group or atoms of a sidechain that are expected to be planar.

Mol	Chain	#Chirality outliers	#Planarity outliers
1	A	0	4
1	B	0	5
All	All	0	9

All (3) bond length outliers are listed below:

Mol	Chain	Res	Type	Atoms	Z	Observed(Å)	Ideal(Å)
1	B	290	GLN	CG-CD	5.63	1.64	1.51
1	B	89	CYS	CB-SG	5.08	1.90	1.82
1	A	48	GLY	C-O	5.07	1.31	1.23

All (11) bond angle outliers are listed below:

Mol	Chain	Res	Type	Atoms	Z	Observed(°)	Ideal(°)
1	B	74	LYS	N-CA-C	-13.16	75.47	111.00
1	A	50	TYR	N-CA-C	7.50	131.25	111.00
1	B	18	LEU	CA-CB-CG	6.42	130.07	115.30
1	B	208	ASP	CB-CG-OD1	6.27	123.94	118.30
1	B	252	ASP	CB-CG-OD1	6.26	123.94	118.30
1	B	285	MET	CG-SD-CE	-6.23	90.24	100.20

*Continued on next page...*

Continued from previous page...

Mol	Chain	Res	Type	Atoms	Z	Observed(°)	Ideal(°)
1	A	49	LYS	CB-CA-C	-5.93	98.53	110.40
1	B	120	ASP	CB-CG-OD1	5.93	123.64	118.30
1	B	99	ASP	CB-CG-OD2	-5.52	113.33	118.30
1	A	169	ARG	NE-CZ-NH1	5.48	123.04	120.30
1	B	80	ARG	NE-CZ-NH1	5.27	122.94	120.30

There are no chirality outliers.

All (9) planarity outliers are listed below:

Mol	Chain	Res	Type	Group
1	A	107	LYS	Peptide
1	A	46	GLY	Peptide
1	A	49	LYS	Peptide
1	A	72	PRO	Peptide
1	B	46	GLY	Peptide
1	B	48	GLY	Peptide
1	B	51	SER	Peptide
1	B	72	PRO	Peptide
1	B	73	VAL	Peptide

## 5.2 Too-close contacts

In the following table, the Non-H and H(model) columns list the number of non-hydrogen atoms and hydrogen atoms in the chain respectively. The H(added) column lists the number of hydrogen atoms added and optimized by MolProbity. The Clashes column lists the number of clashes within the asymmetric unit, whereas Symm-Clashes lists symmetry related clashes.

Mol	Chain	Non-H	H(model)	H(added)	Clashes	Symm-Clashes
1	A	2727	0	2712	47	0
1	B	2727	0	2712	33	0
2	A	13	0	2	1	0
2	B	13	0	2	1	0
3	A	295	0	0	5	0
3	B	260	0	0	3	0
All	All	6035	0	5428	79	0

The all-atom clashscore is defined as the number of clashes found per 1000 atoms (including hydrogen atoms). The all-atom clashscore for this structure is 7.

All (79) close contacts within the same asymmetric unit are listed below, sorted by their clash magnitude.



Atom-1	Atom-2	Interatomic distance (Å)	Clash overlap (Å)
1:A:73:VAL:HG11	1:A:78:ILE:CG1	1.67	1.25
1:A:71:LYS:O	1:A:73:VAL:HG23	1.28	1.24
1:B:73:VAL:CG1	1:B:78:ILE:HD11	1.78	1.13
1:A:73:VAL:HG11	1:A:78:ILE:CD1	1.77	1.12
1:A:73:VAL:HG11	1:A:78:ILE:HG13	1.37	1.05
1:A:73:VAL:CG1	1:A:78:ILE:CD1	2.34	1.05
1:B:71:LYS:O	1:B:73:VAL:HB	1.57	1.04
1:A:73:VAL:CG1	1:A:78:ILE:HG13	1.91	1.00
1:A:71:LYS:O	1:A:73:VAL:CG2	2.10	1.00
1:A:73:VAL:CG1	1:A:78:ILE:HD11	1.92	0.97
1:A:73:VAL:HG11	1:A:78:ILE:HD11	1.45	0.96
1:B:73:VAL:HG13	1:B:78:ILE:HD11	1.45	0.95
1:B:73:VAL:HG11	1:B:78:ILE:HD11	1.49	0.94
1:B:50:TYR:H	1:B:50:TYR:HD1	1.17	0.90
1:B:73:VAL:HG13	1:B:78:ILE:CD1	2.10	0.80
1:A:230:GLU:HB2	3:A:1115:HOH:O	1.81	0.80
1:A:74:LYS:HE2	1:A:77:LYS:HE2	1.66	0.78
1:A:36:GLN:HG3	3:A:1105:HOH:O	1.86	0.76
1:B:118:ASN:HD22	1:B:164:ILE:H	1.35	0.75
1:A:44:LYS:HZ3	1:A:47:ARG:HB3	1.51	0.75
1:A:73:VAL:HG12	1:A:78:ILE:CD1	2.19	0.71
1:A:282:LEU:HD13	3:A:1261:HOH:O	1.93	0.68
1:A:44:LYS:NZ	1:A:47:ARG:HB3	2.10	0.66
1:A:73:VAL:CG1	1:A:78:ILE:CG1	2.46	0.65
1:A:103:ASP:OD1	1:A:105:HIS:N	2.25	0.64
1:A:48:GLY:HA3	1:A:51:SER:O	1.99	0.63
1:A:44:LYS:HZ3	1:A:47:ARG:CB	2.13	0.62
1:B:50:TYR:N	1:B:50:TYR:CD1	2.64	0.61
1:A:50:TYR:HA	1:A:71:LYS:HG3	1.84	0.60
1:B:134:ARG:HG2	1:B:323:TYR:CZ	2.39	0.57
1:B:118:ASN:ND2	1:B:164:ILE:H	1.99	0.57
1:A:44:LYS:HZ3	1:A:46:GLY:HA2	1.69	0.57
1:A:73:VAL:CB	1:A:78:ILE:HD11	2.35	0.57
1:B:189:ASN:ND2	1:B:191:ARG:H	2.02	0.57
1:A:55:GLU:HG2	3:A:1080:HOH:O	2.08	0.54
1:A:96:LYS:HG2	1:A:98:LEU:HD23	1.90	0.54
1:B:290:GLN:NE2	3:B:1074:HOH:O	2.40	0.53
1:B:48:GLY:HA3	1:B:51:SER:O	2.09	0.53
1:B:42:VAL:HG12	1:B:43:ARG:HG3	1.90	0.52
1:A:44:LYS:NZ	1:A:47:ARG:CB	2.72	0.52
1:B:72:PRO:HA	1:B:73:VAL:HG12	1.92	0.52
1:B:50:TYR:N	1:B:50:TYR:HD1	1.98	0.51

*Continued on next page...*

*Continued from previous page...*

Atom-1	Atom-2	Interatomic distance (Å)	Clash overlap (Å)
1:B:8:LYS:HD2	1:B:184:PRO:HB3	1.92	0.51
1:B:49:LYS:HG3	1:B:49:LYS:O	2.09	0.51
1:A:296:GLU:H	1:A:296:GLU:CD	2.14	0.50
1:B:279:LYS:HG3	1:B:283:LYS:HD2	1.93	0.50
1:A:73:VAL:HG12	1:A:78:ILE:HD12	1.92	0.50
1:A:278:ARG:NH2	3:A:1019:HOH:O	2.46	0.48
1:B:26:TYR:HE1	1:B:76:LYS:HG2	1.78	0.48
1:A:44:LYS:NZ	1:A:46:GLY:HA2	2.29	0.47
1:A:321:HIS:CG	1:A:322:PRO:HD2	2.49	0.47
1:B:199:GLY:HA2	1:B:216:TRP:CD1	2.49	0.47
1:A:74:LYS:CE	1:A:77:LYS:HG3	2.44	0.47
1:B:80:ARG:NH2	1:B:177:GLY:O	2.48	0.47
1:B:160:HIS:HD2	3:B:1101:HOH:O	1.96	0.47
1:B:51:SER:HB2	1:B:68:LYS:HE3	1.97	0.46
1:A:326:GLN:HG2	1:B:169:ARG:HE	1.81	0.46
1:A:158:LYS:HE3	1:A:160:HIS:HB2	1.97	0.46
1:A:50:TYR:HB3	1:A:71:LYS:HB2	1.99	0.45
1:A:89:CYS:SG	1:A:96:LYS:HG3	2.57	0.45
1:A:134:ARG:HG2	1:A:323:TYR:CZ	2.52	0.44
1:A:166:HIS:CE1	1:A:169:ARG:HH21	2.35	0.44
1:A:52:GLU:HB2	1:A:54:PHE:CE2	2.54	0.43
1:B:116:VAL:O	2:B:1002:K17:BR1	2.92	0.43
1:A:58:ASN:C	1:A:58:ASN:HD22	2.22	0.43
1:A:325:GLN:HB2	1:A:325:GLN:HE21	1.75	0.42
1:B:68:LYS:HE2	1:B:70:LEU:HD21	2.02	0.42
1:A:96:LYS:HB2	1:A:96:LYS:HE2	1.55	0.41
1:B:45:VAL:O	1:B:46:GLY:O	2.38	0.41
1:B:48:GLY:HA3	1:B:49:LYS:HA	1.95	0.41
1:A:22:GLU:O	1:A:83:LYS:HE2	2.21	0.41
1:A:58:ASN:HD22	1:A:59:VAL:N	2.19	0.41
1:B:259:ASN:ND2	3:B:1153:HOH:O	2.46	0.41
1:A:103:ASP:HB3	1:A:106:SER:OG	2.20	0.41
1:B:69:ILE:HG12	1:B:110:SER:OG	2.21	0.41
1:B:49:LYS:CG	1:B:49:LYS:O	2.67	0.41
1:A:116:VAL:O	2:A:1001:K17:BR1	2.95	0.40
1:A:75:LYS:HG3	1:A:79:LYS:HE2	2.03	0.40
1:B:73:VAL:HG22	1:B:74:LYS:H	1.87	0.40

There are no symmetry-related clashes.

## 5.3 Torsion angles [i](#)

### 5.3.1 Protein backbone [i](#)

In the following table, the Percentiles column shows the percent Ramachandran outliers of the chain as a percentile score with respect to all X-ray entries followed by that with respect to entries of similar resolution.

The Analysed column shows the number of residues for which the backbone conformation was analysed, and the total number of residues.

Mol	Chain	Analysed	Favoured	Allowed	Outliers	Percentiles	
1	A	325/332 (98%)	309 (95%)	14 (4%)	2 (1%)	25	12
1	B	325/332 (98%)	314 (97%)	8 (2%)	3 (1%)	17	6
All	All	650/664 (98%)	623 (96%)	22 (3%)	5 (1%)	19	7

All (5) Ramachandran outliers are listed below:

Mol	Chain	Res	Type
1	B	46	GLY
1	B	73	VAL
1	A	107	LYS
1	A	108	THR
1	B	193	ALA

### 5.3.2 Protein sidechains [i](#)

In the following table, the Percentiles column shows the percent sidechain outliers of the chain as a percentile score with respect to all X-ray entries followed by that with respect to entries of similar resolution.

The Analysed column shows the number of residues for which the sidechain conformation was analysed, and the total number of residues.

Mol	Chain	Analysed	Rotameric	Outliers	Percentiles	
1	A	296/300 (99%)	282 (95%)	14 (5%)	26	11
1	B	296/300 (99%)	288 (97%)	8 (3%)	44	30
All	All	592/600 (99%)	570 (96%)	22 (4%)	34	19

All (22) residues with a non-rotameric sidechain are listed below:

Mol	Chain	Res	Type
1	A	47	ARG

*Continued on next page...*

*Continued from previous page...*

Mol	Chain	Res	Type
1	A	50	TYR
1	A	52	GLU
1	A	58	ASN
1	A	71	LYS
1	A	73	VAL
1	A	74	LYS
1	A	160	HIS
1	A	169	ARG
1	A	180	GLU
1	A	194	SER
1	A	230	GLU
1	A	266	ASP
1	A	325	GLN
1	B	41	VAL
1	B	47	ARG
1	B	49	LYS
1	B	50	TYR
1	B	57	ILE
1	B	74	LYS
1	B	259	ASN
1	B	333	SER

Some sidechains can be flipped to improve hydrogen bonding and reduce clashes. All (11) such sidechains are listed below:

Mol	Chain	Res	Type
1	A	58	ASN
1	A	150	GLN
1	A	291	HIS
1	A	325	GLN
1	B	118	ASN
1	B	160	HIS
1	B	189	ASN
1	B	259	ASN
1	B	268	GLN
1	B	291	HIS
1	B	325	GLN

### 5.3.3 RNA [i](#)

There are no RNA molecules in this entry.

## 5.4 Non-standard residues in protein, DNA, RNA chains [i](#)

There are no non-standard protein/DNA/RNA residues in this entry.

## 5.5 Carbohydrates [i](#)

There are no carbohydrates in this entry.

## 5.6 Ligand geometry [i](#)

2 ligands are modelled in this entry.

In the following table, the Counts columns list the number of bonds (or angles) for which Mogul statistics could be retrieved, the number of bonds (or angles) that are observed in the model and the number of bonds (or angles) that are defined in the Chemical Component Dictionary. The Link column lists molecule types, if any, to which the group is linked. The Z score for a bond length (or angle) is the number of standard deviations the observed value is removed from the expected value. A bond length (or angle) with  $|Z| > 2$  is considered an outlier worth inspection. RMSZ is the root-mean-square of all Z scores of the bond lengths (or angles).

Mol	Type	Chain	Res	Link	Bond lengths			Bond angles		
					Counts	RMSZ	# Z  > 2	Counts	RMSZ	# Z  > 2
2	K17	B	1002	-	10,14,14	1.19	1 (10%)	10,21,21	2.05	4 (40%)
2	K17	A	1001	-	10,14,14	0.91	0	10,21,21	1.45	2 (20%)

In the following table, the Chirals column lists the number of chiral outliers, the number of chiral centers analysed, the number of these observed in the model and the number defined in the Chemical Component Dictionary. Similar counts are reported in the Torsion and Rings columns. '-' means no outliers of that kind were identified.

Mol	Type	Chain	Res	Link	Chirals	Torsions	Rings
2	K17	B	1002	-	-	-	0/2/2/2
2	K17	A	1001	-	-	-	0/2/2/2

All (1) bond length outliers are listed below:

Mol	Chain	Res	Type	Atoms	Z	Observed(Å)	Ideal(Å)
2	B	1002	K17	BR1-C1	2.41	1.94	1.89

All (6) bond angle outliers are listed below:

Mol	Chain	Res	Type	Atoms	Z	Observed(°)	Ideal(°)
2	B	1002	K17	C2-C1-C4	-4.10	114.44	119.97

*Continued on next page...*

*Continued from previous page...*

Mol	Chain	Res	Type	Atoms	Z	Observed(°)	Ideal(°)
2	A	1001	K17	BR3-C3-C2	-2.68	117.54	120.97
2	B	1002	K17	C1-C4-C6	2.42	123.88	121.33
2	B	1002	K17	C2-C3-C7	2.33	123.78	121.33
2	B	1002	K17	BR4-C4-C1	-2.23	118.12	120.97
2	A	1001	K17	BR2-C2-C3	-2.01	117.55	120.60

There are no chirality outliers.

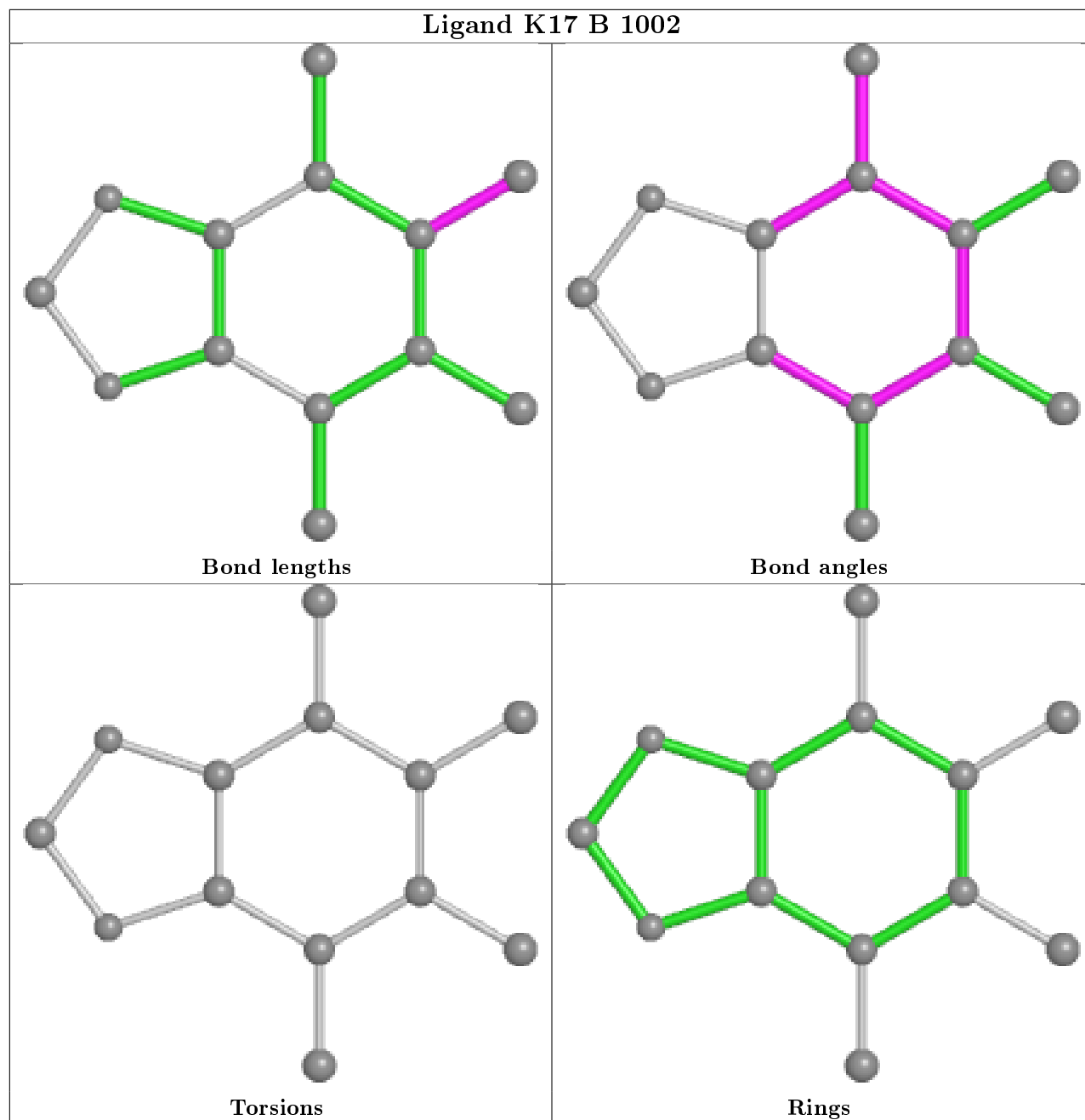
There are no torsion outliers.

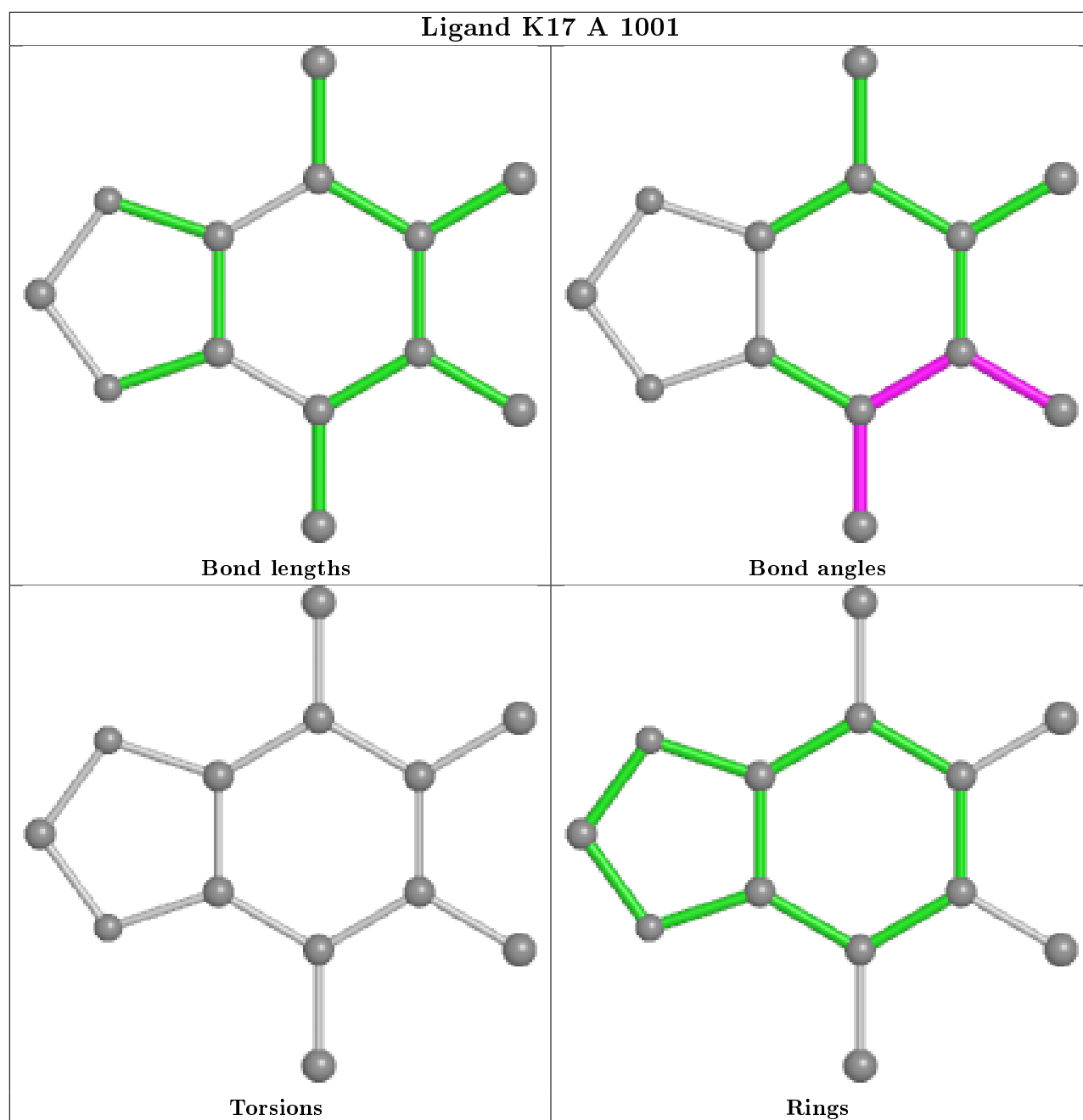
There are no ring outliers.

2 monomers are involved in 2 short contacts:

Mol	Chain	Res	Type	Clashes	Symm-Clashes
2	B	1002	K17	1	0
2	A	1001	K17	1	0

The following is a two-dimensional graphical depiction of Mogul quality analysis of bond lengths, bond angles, torsion angles, and ring geometry for all instances of the Ligand of Interest. In addition, ligands with molecular weight > 250 and outliers as shown on the validation Tables will also be included. For torsion angles, if less than 5% of the Mogul distribution of torsion angles is within 10 degrees of the torsion angle in question, then that torsion angle is considered an outlier. Any bond that is central to one or more torsion angles identified as an outlier by Mogul will be highlighted in the graph. For rings, the root-mean-square deviation (RMSD) between the ring in question and similar rings identified by Mogul is calculated over all ring torsion angles. If the average RMSD is greater than 60 degrees and the minimal RMSD between the ring in question and any Mogul-identified rings is also greater than 60 degrees, then that ring is considered an outlier. The outliers are highlighted in purple. The color gray indicates Mogul did not find sufficient equivalents in the CSD to analyse the geometry.





## 5.7 Other polymers [i](#)

There are no such residues in this entry.

## 5.8 Polymer linkage issues [i](#)

There are no chain breaks in this entry.



## 6 Fit of model and data

### 6.1 Protein, DNA and RNA chains

In the following table, the column labelled '#RSRZ > 2' contains the number (and percentage) of RSRZ outliers, followed by percent RSRZ outliers for the chain as percentile scores relative to all X-ray entries and entries of similar resolution. The OWAB column contains the minimum, median, 95<sup>th</sup> percentile and maximum values of the occupancy-weighted average B-factor per residue. The column labelled 'Q < 0.9' lists the number of (and percentage) of residues with an average occupancy less than 0.9.

Mol	Chain	Analysed	<RSRZ>	#RSRZ>2	OWAB(Å <sup>2</sup> )	Q<0.9
1	A	327/332 (98%)	0.17	16 (4%) 29 24	6, 13, 32, 50	0
1	B	327/332 (98%)	0.38	23 (7%) 16 13	5, 13, 31, 48	0
All	All	654/664 (98%)	0.27	39 (5%) 21 17	5, 13, 32, 50	0

All (39) RSRZ outliers are listed below:

Mol	Chain	Res	Type	RSRZ
1	A	73	VAL	12.1
1	B	50	TYR	12.1
1	A	72	PRO	11.8
1	A	333	SER	11.0
1	B	72	PRO	9.9
1	B	48	GLY	9.5
1	B	49	LYS	8.4
1	A	50	TYR	7.8
1	B	73	VAL	7.3
1	A	48	GLY	7.0
1	B	333	SER	5.6
1	B	47	ARG	5.5
1	A	46	GLY	5.5
1	B	45	VAL	5.1
1	B	51	SER	4.7
1	B	46	GLY	4.6
1	B	71	LYS	4.6
1	B	332	ASN	4.4
1	B	18	LEU	4.2
1	A	332	ASN	4.2
1	B	74	LYS	4.2
1	B	62	ASN	3.8
1	A	49	LYS	3.8
1	A	264	GLU	3.7

*Continued on next page...*

*Continued from previous page...*

Mol	Chain	Res	Type	RSRZ
1	B	59	VAL	3.0
1	A	275	ARG	2.7
1	A	265	LEU	2.6
1	A	74	LYS	2.6
1	A	266	ASP	2.5
1	B	75	LYS	2.5
1	B	20	PRO	2.5
1	A	31	VAL	2.4
1	B	89	CYS	2.4
1	B	23	TYR	2.3
1	A	62	ASN	2.3
1	B	267	PRO	2.2
1	A	51	SER	2.2
1	B	275	ARG	2.1
1	B	17	VAL	2.1

## 6.2 Non-standard residues in protein, DNA, RNA chains [i](#)

There are no non-standard protein/DNA/RNA residues in this entry.

## 6.3 Carbohydrates [i](#)

There are no carbohydrates in this entry.

## 6.4 Ligands [i](#)

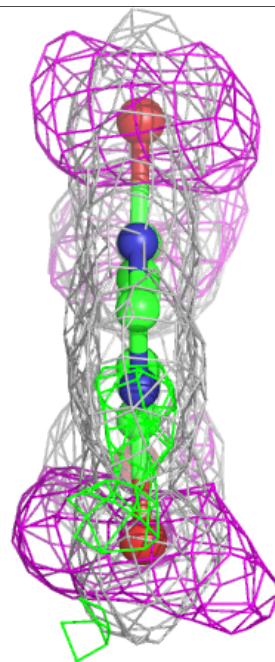
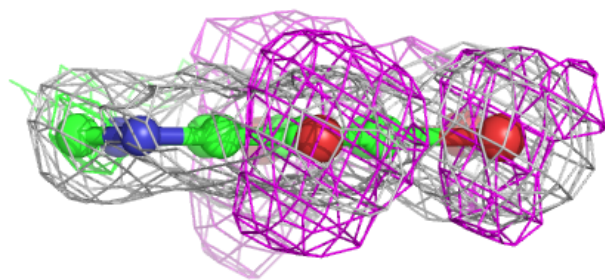
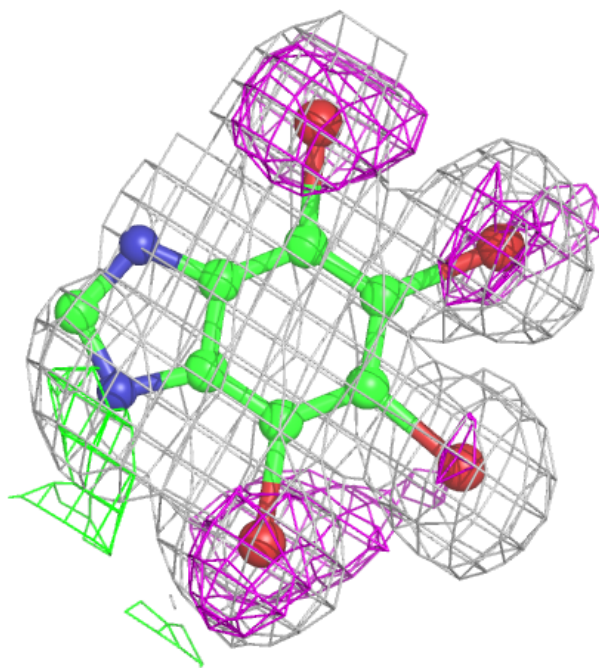
In the following table, the Atoms column lists the number of modelled atoms in the group and the number defined in the chemical component dictionary. The B-factors column lists the minimum, median, 95<sup>th</sup> percentile and maximum values of B factors of atoms in the group. The column labelled 'Q< 0.9' lists the number of atoms with occupancy less than 0.9.

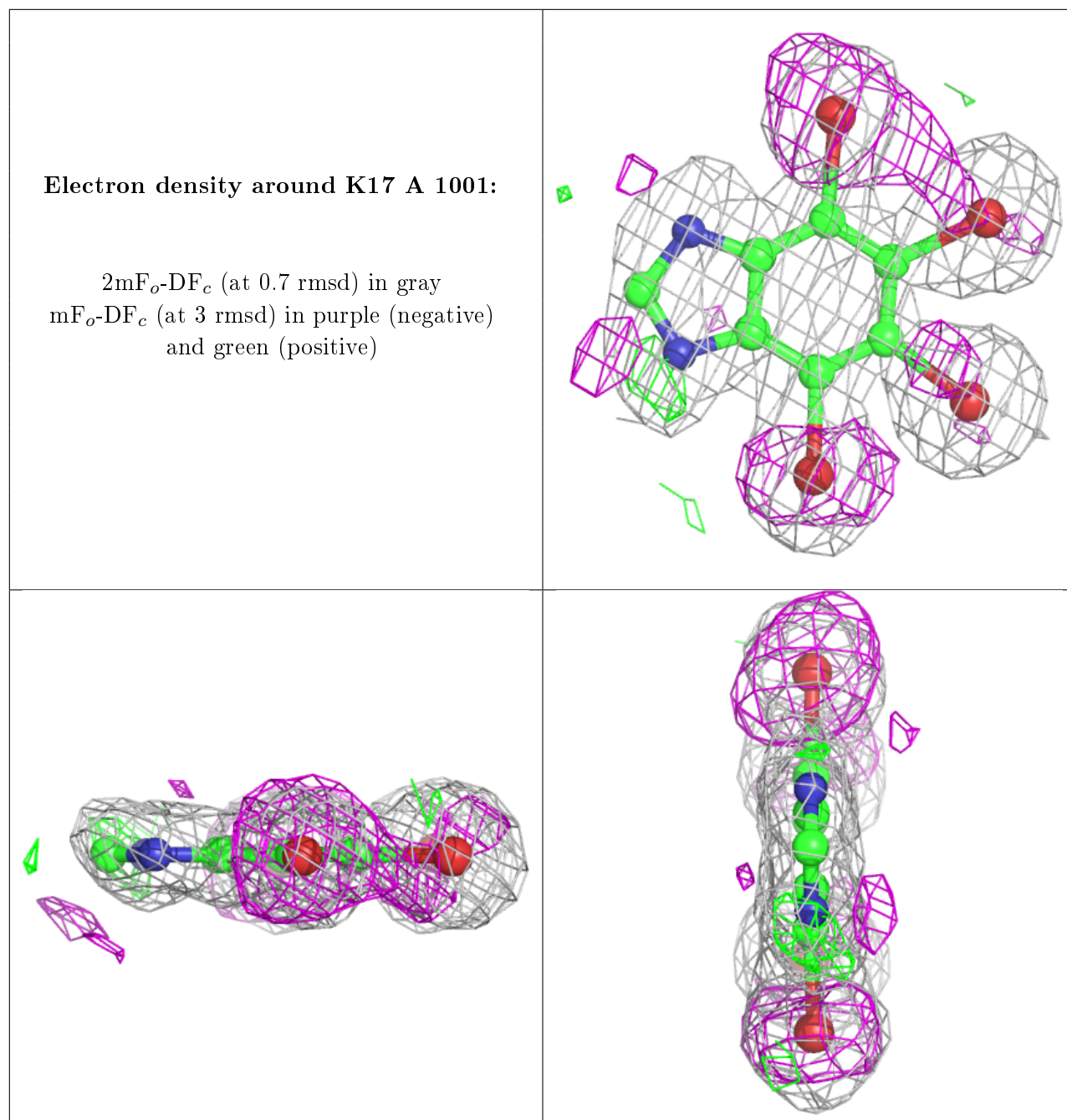
Mol	Type	Chain	Res	Atoms	RSCC	RSR	B-factors( $\text{\AA}^2$ )	Q<0.9
2	K17	B	1002	13/13	0.94	0.12	22,28,36,40	0
2	K17	A	1001	13/13	0.96	0.12	20,26,34,37	0

The following is a graphical depiction of the model fit to experimental electron density of all instances of the Ligand of Interest. In addition, ligands with molecular weight > 250 and outliers as shown on the geometry validation Tables will also be included. Each fit is shown from different orientation to approximate a three-dimensional view.

**Electron density around K17 B 1002:**

$2mF_o-DF_c$  (at 0.7 rmsd) in gray  
 $mF_o-DF_c$  (at 3 rmsd) in purple (negative)  
and green (positive)





## 6.5 Other polymers [\(i\)](#)

There are no such residues in this entry.