



# Full wwPDB X-ray Structure Validation Report ⓘ

Aug 29, 2023 – 02:00 PM EDT

PDB ID : 3OQ3  
Title : Structural Basis of Type-I Interferon Sequestration by a Poxvirus Decoy Receptor  
Authors : Fremont, D.H.; Lee, C.A.; Center for Structural Genomics of Infectious Diseases (CSGID)  
Deposited on : 2010-09-02  
Resolution : 2.10 Å(reported)

This is a Full wwPDB X-ray Structure Validation Report for a publicly released PDB entry.

We welcome your comments at [validation@mail.wwpdb.org](mailto:validation@mail.wwpdb.org)

A user guide is available at

<https://www.wwpdb.org/validation/2017/XrayValidationReportHelp>

with specific help available everywhere you see the ⓘ symbol.

The types of validation reports are described at

<http://www.wwpdb.org/validation/2017/FAQs#types>.

---

The following versions of software and data (see [references ⓘ](#)) were used in the production of this report:

MolProbity : 4.02b-467  
Mogul : 1.8.5 (274361), CSD as541be (2020)  
Xtriage (Phenix) : 1.13  
EDS : 2.35  
Percentile statistics : 20191225.v01 (using entries in the PDB archive December 25th 2019)  
Refmac : 5.8.0158  
CCP4 : 7.0.044 (Gargrove)  
Ideal geometry (proteins) : Engh & Huber (2001)  
Ideal geometry (DNA, RNA) : Parkinson et al. (1996)  
Validation Pipeline (wwPDB-VP) : 2.35

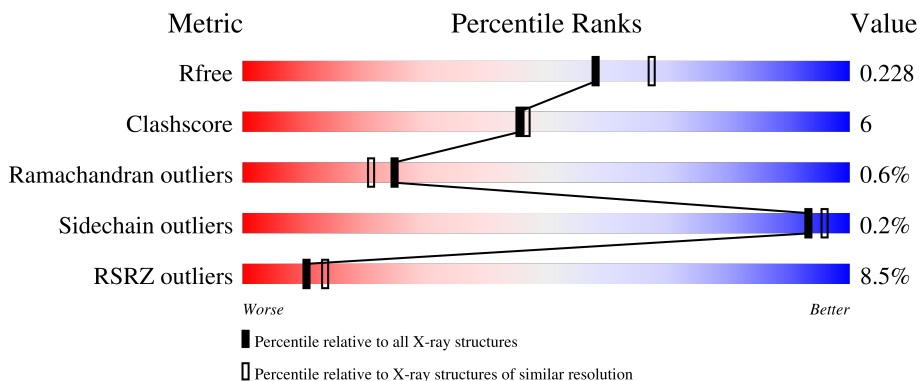
# 1 Overall quality at a glance

The following experimental techniques were used to determine the structure:

*X-RAY DIFFRACTION*

The reported resolution of this entry is 2.10 Å.

Percentile scores (ranging between 0-100) for global validation metrics of the entry are shown in the following graphic. The table shows the number of entries on which the scores are based.



Metric	Whole archive (#Entries)	Similar resolution (#Entries, resolution range(Å))
$R_{free}$	130704	5197 (2.10-2.10)
Clashscore	141614	5710 (2.10-2.10)
Ramachandran outliers	138981	5647 (2.10-2.10)
Sidechain outliers	138945	5648 (2.10-2.10)
RSRZ outliers	127900	5083 (2.10-2.10)

The table below summarises the geometric issues observed across the polymeric chains and their fit to the electron density. The red, orange, yellow and green segments of the lower bar indicate the fraction of residues that contain outliers for  $\geq 3$ , 2, 1 and 0 types of geometric quality criteria respectively. A grey segment represents the fraction of residues that are not modelled. The numeric value for each fraction is indicated below the corresponding segment, with a dot representing fractions  $\leq 5\%$ . The upper red bar (where present) indicates the fraction of residues that have poor fit to the electron density. The numeric value is given above the bar.

Mol	Chain	Length	Quality of chain
1	A	166	
2	B	329	

## 2 Entry composition [i](#)

There are 8 unique types of molecules in this entry. The entry contains 4391 atoms, of which 0 are hydrogens and 0 are deuteriums.

In the tables below, the ZeroOcc column contains the number of atoms modelled with zero occupancy, the AltConf column contains the number of residues with at least one atom in alternate conformation and the Trace column contains the number of residues modelled with at most 2 atoms.

- Molecule 1 is a protein called Interferon alpha-5.

Mol	Chain	Residues	Atoms					ZeroOcc	AltConf	Trace
			Total	C	N	O	S			
1	A	166	1331	835	242	247	7	0	0	0

- Molecule 2 is a protein called IFN-alpha/beta binding protein C12R.

Mol	Chain	Residues	Atoms					ZeroOcc	AltConf	Trace
			Total	C	N	O	S			
2	B	329	2643	1669	447	512	15	0	0	0

There is a discrepancy between the modelled and reference sequences:

Chain	Residue	Modelled	Actual	Comment	Reference
B	0	MET	-	initiating methionine	UNP Q9JFS5

- Molecule 3 is ZINC ION (three-letter code: ZN) (formula: Zn).

Mol	Chain	Residues	Atoms		ZeroOcc	AltConf
3	A	1	Total	Zn	0	0
			1	1		

- Molecule 4 is CHLORIDE ION (three-letter code: CL) (formula: Cl).

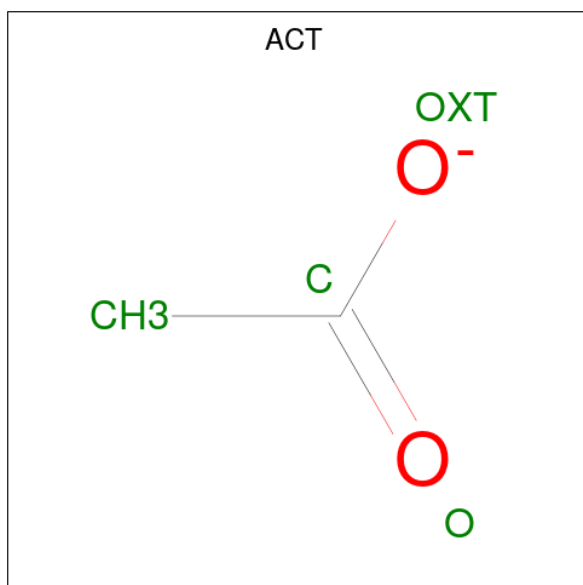
Mol	Chain	Residues	Atoms		ZeroOcc	AltConf
4	A	1	Total	Cl	0	0
			1	1		

- Molecule 5 is 1,2-ETHANEDIOL (three-letter code: EDO) (formula: C<sub>2</sub>H<sub>6</sub>O<sub>2</sub>).



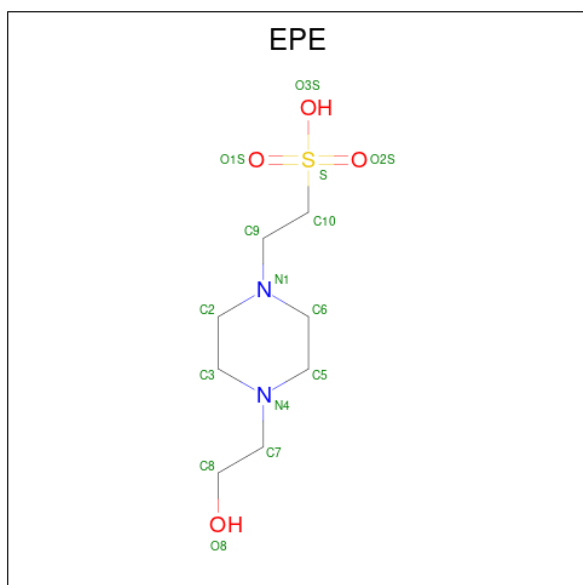
Mol	Chain	Residues	Atoms		ZeroOcc	AltConf
5	A	1	Total	C O	0	0
			4	2 2		
5	A	1	Total	C O	0	0
			4	2 2		
5	B	1	Total	C O	0	0
			4	2 2		
5	B	1	Total	C O	0	0
			4	2 2		

- Molecule 6 is ACETATE ION (three-letter code: ACT) (formula:  $C_2H_3O_2^-$ ).



Mol	Chain	Residues	Atoms			ZeroOcc	AltConf
6	B	1	Total	C	O	0	0
			4	2	2		
6	B	1	Total	C	O	0	0
			4	2	2		

- Molecule 7 is 4-(2-HYDROXYETHYL)-1-PIPERAZINE ETHANESULFONIC ACID (three-letter code: EPE) (formula: C<sub>8</sub>H<sub>18</sub>N<sub>2</sub>O<sub>4</sub>S).



Mol	Chain	Residues	Atoms					ZeroOcc	AltConf
7	B	1	Total	C	N	O	S	0	0
			15	8	2	4	1		
7	B	1	Total	C	N	O	S	0	0
			15	8	2	4	1		


- Molecule 8 is water.

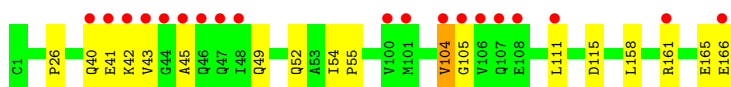
Mol	Chain	Residues	Atoms		ZeroOcc	AltConf
8	A	91	Total	O	0	0
			91	91		
8	B	270	Total	O	0	0
			270	270		

### 3 Residue-property plots [i](#)


These plots are drawn for all protein, RNA, DNA and oligosaccharide chains in the entry. The first graphic for a chain summarises the proportions of the various outlier classes displayed in the second graphic. The second graphic shows the sequence view annotated by issues in geometry and electron density. Residues are color-coded according to the number of geometric quality criteria for which they contain at least one outlier: green = 0, yellow = 1, orange = 2 and red = 3 or more. A red dot above a residue indicates a poor fit to the electron density ( $RSRZ > 2$ ). Stretches of 2 or more consecutive residues without any outlier are shown as a green connector. Residues present in the sample, but not in the model, are shown in grey.

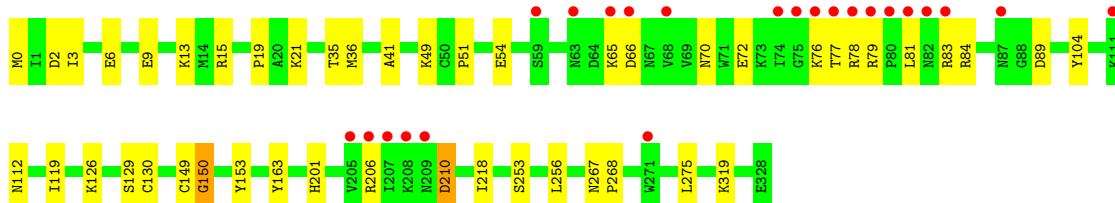
- Molecule 1: Interferon alpha-5

Chain A: 



- Molecule 2: IFN-alpha/beta binding protein C12R

Chain B: 



## 4 Data and refinement statistics

Property	Value	Source
Space group	P 21 21 21	Depositor
Cell constants a, b, c, $\alpha$ , $\beta$ , $\gamma$	48.84Å 75.90Å 182.73Å 90.00° 90.00° 90.00°	Depositor
Resolution (Å)	43.07 – 2.10 45.68 – 2.10	Depositor EDS
% Data completeness (in resolution range)	93.8 (43.07-2.10) 92.7 (45.68-2.10)	Depositor EDS
$R_{merge}$	0.09	Depositor
$R_{sym}$	(Not available)	Depositor
$\langle I/\sigma(I) \rangle$ <sup>1</sup>	3.21 (at 2.10Å)	Xtrriage
Refinement program	PHENIX 1.6.2_432	Depositor
R, $R_{free}$	0.203 , 0.235 0.195 , 0.228	Depositor DCC
$R_{free}$ test set	1916 reflections (4.95%)	wwPDB-VP
Wilson B-factor (Å <sup>2</sup> )	29.6	Xtrriage
Anisotropy	0.360	Xtrriage
Bulk solvent $k_{sol}$ (e/Å <sup>3</sup> ), $B_{sol}$ (Å <sup>2</sup> )	0.31 , 58.6	EDS
L-test for twinning <sup>2</sup>	$\langle  L  \rangle = 0.51$ , $\langle L^2 \rangle = 0.35$	Xtrriage
Estimated twinning fraction	No twinning to report.	Xtrriage
$F_o, F_c$ correlation	0.95	EDS
Total number of atoms	4391	wwPDB-VP
Average B, all atoms (Å <sup>2</sup> )	35.0	wwPDB-VP

Xtrriage's analysis on translational NCS is as follows: *The largest off-origin peak in the Patterson function is 4.70% of the height of the origin peak. No significant pseudotranslation is detected.*

<sup>1</sup>Intensities estimated from amplitudes.

<sup>2</sup>Theoretical values of  $\langle |L| \rangle$ ,  $\langle L^2 \rangle$  for acentric reflections are 0.5, 0.333 respectively for untwinned datasets, and 0.375, 0.2 for perfectly twinned datasets.

## 5 Model quality [i](#)

### 5.1 Standard geometry [i](#)

Bond lengths and bond angles in the following residue types are not validated in this section: EDO, ACT, CL, EPE, ZN

The Z score for a bond length (or angle) is the number of standard deviations the observed value is removed from the expected value. A bond length (or angle) with  $|Z| > 5$  is considered an outlier worth inspection. RMSZ is the root-mean-square of all Z scores of the bond lengths (or angles).

Mol	Chain	Bond lengths		Bond angles	
		RMSZ	# Z  >5	RMSZ	# Z  >5
1	A	0.37	0/1353	0.48	0/1828
2	B	0.38	0/2704	0.54	0/3676
All	All	0.38	0/4057	0.52	0/5504

There are no bond length outliers.

There are no bond angle outliers.

There are no chirality outliers.

There are no planarity outliers.

### 5.2 Too-close contacts [i](#)

In the following table, the Non-H and H(model) columns list the number of non-hydrogen atoms and hydrogen atoms in the chain respectively. The H(added) column lists the number of hydrogen atoms added and optimized by MolProbity. The Clashes column lists the number of clashes within the asymmetric unit, whereas Symm-Clashes lists symmetry-related clashes.

Mol	Chain	Non-H	H(model)	H(added)	Clashes	Symm-Clashes
1	A	1331	0	1354	16	0
2	B	2643	0	2564	38	0
3	A	1	0	0	0	0
4	A	1	0	0	0	0
5	A	8	0	12	0	0
5	B	8	0	12	0	0
6	B	8	0	6	0	0
7	B	30	0	34	2	0
8	A	91	0	0	1	1
8	B	270	0	0	9	2
All	All	4391	0	3982	51	2



The all-atom clashscore is defined as the number of clashes found per 1000 atoms (including hydrogen atoms). The all-atom clashscore for this structure is 6.

All (51) close contacts within the same asymmetric unit are listed below, sorted by their clash magnitude.

Atom-1	Atom-2	Interatomic distance (Å)	Clash overlap (Å)
1:A:45:ALA:HB3	1:A:161:ARG:HE	1.28	0.98
2:B:201:HIS:HB3	2:B:210:ASP:OD2	1.77	0.83
2:B:9:GLU:HG2	2:B:13:LYS:HE2	1.65	0.77
2:B:0:MET:N	8:B:345:HOH:O	2.25	0.70
2:B:81:LEU:HD11	2:B:104:TYR:CE2	2.27	0.69
2:B:83:ARG:HG2	2:B:206:ARG:HE	1.59	0.68
2:B:36:MET:SD	8:B:541:HOH:O	2.52	0.67
1:A:45:ALA:CB	1:A:161:ARG:HE	2.06	0.67
1:A:45:ALA:HB3	1:A:161:ARG:NE	2.07	0.67
2:B:84:ARG:NH2	8:B:580:HOH:O	2.28	0.66
1:A:104:VAL:HG23	1:A:105:GLY:H	1.63	0.64
2:B:83:ARG:HA	2:B:206:ARG:NH2	2.14	0.62
1:A:42:LYS:HE3	1:A:115:ASP:OD2	2.01	0.61
2:B:149:CYS:O	2:B:150:GLY:O	2.19	0.60
1:A:41:GLU:HG2	1:A:42:LYS:HG3	1.84	0.59
1:A:111:LEU:HD12	2:B:3:ILE:HG13	1.87	0.57
2:B:130:CYS:HB3	2:B:218:ILE:HG12	1.87	0.56
2:B:65:LYS:HG3	2:B:66:ASP:OD1	2.06	0.55
2:B:267:ASN:HB2	2:B:268:PRO:CD	2.37	0.54
1:A:45:ALA:HB2	1:A:158:LEU:HD12	1.89	0.54
2:B:129:SER:N	8:B:527:HOH:O	2.17	0.54
1:A:165:GLU:O	1:A:166:GLU:HG3	2.09	0.53
2:B:15:ARG:NH1	8:B:450:HOH:O	2.25	0.52
2:B:19:PRO:HB2	2:B:21:LYS:HG2	1.91	0.52
2:B:83:ARG:HG2	2:B:206:ARG:NE	2.24	0.52
2:B:70:ASN:ND2	8:B:396:HOH:O	2.41	0.52
2:B:253:SER:O	2:B:256:LEU:HD23	2.11	0.51
2:B:163:TYR:OH	7:B:334:EPE:H101	2.12	0.50
2:B:51:PRO:HA	2:B:54:GLU:HG2	1.94	0.50
1:A:49:GLN:H	1:A:52:GLN:NE2	2.11	0.48
2:B:267:ASN:HB2	2:B:268:PRO:HD2	1.94	0.48
2:B:76:LYS:HD2	2:B:76:LYS:H	1.80	0.47
7:B:334:EPE:H52	7:B:334:EPE:O8	2.14	0.47
1:A:26:PRO:HB3	2:B:275:LEU:HD11	1.97	0.46
2:B:35:THR:HG22	2:B:119:ILE:HB	1.98	0.46
1:A:54:ILE:HB	1:A:55:PRO:HD3	1.98	0.45
2:B:41:ALA:HB2	2:B:153:TYR:HE2	1.82	0.45

*Continued on next page...*

Continued from previous page...

Atom-1	Atom-2	Interatomic distance (Å)	Clash overlap (Å)
1:A:45:ALA:HB2	1:A:158:LEU:CD1	2.46	0.45
1:A:111:LEU:HB2	2:B:0:MET:HE2	1.97	0.45
1:A:40:GLN:NE2	8:A:325:HOH:O	2.50	0.44
2:B:126:LYS:O	2:B:126:LYS:HG3	2.17	0.44
2:B:49:LYS:HD3	2:B:89:ASP:OD1	2.18	0.44
2:B:76:LYS:HD2	2:B:76:LYS:N	2.34	0.43
2:B:77:THR:HG21	2:B:79:ARG:HH21	1.83	0.42
2:B:83:ARG:CG	2:B:206:ARG:HE	2.29	0.41
2:B:319:LYS:HE3	8:B:591:HOH:O	2.20	0.41
2:B:129:SER:HB2	8:B:527:HOH:O	2.19	0.41
2:B:2:ASP:O	2:B:6:GLU:HG3	2.21	0.40
2:B:72:GLU:OE1	2:B:78:ARG:NH2	2.55	0.40
1:A:111:LEU:N	2:B:0:MET:HE1	2.35	0.40
2:B:112:ASN:HB2	8:B:538:HOH:O	2.20	0.40

All (2) symmetry-related close contacts are listed below. The label for Atom-2 includes the symmetry operator and encoded unit-cell translations to be applied.

Atom-1	Atom-2	Interatomic distance (Å)	Clash overlap (Å)
8:B:575:HOH:O	8:B:583:HOH:O[3_645]	2.04	0.16
8:A:216:HOH:O	8:B:579:HOH:O[3_545]	2.06	0.14

## 5.3 Torsion angles [i](#)

### 5.3.1 Protein backbone [i](#)

In the following table, the Percentiles column shows the percent Ramachandran outliers of the chain as a percentile score with respect to all X-ray entries followed by that with respect to entries of similar resolution.

The Analysed column shows the number of residues for which the backbone conformation was analysed, and the total number of residues.

Mol	Chain	Analysed	Favoured	Allowed	Outliers	Percentiles	
1	A	164/166 (99%)	157 (96%)	5 (3%)	2 (1%)	13	8
2	B	327/329 (99%)	308 (94%)	18 (6%)	1 (0%)	41	41
All	All	491/495 (99%)	465 (95%)	23 (5%)	3 (1%)	25	21

All (3) Ramachandran outliers are listed below:

Mol	Chain	Res	Type
2	B	150	GLY
1	A	104	VAL
1	A	43	VAL

### 5.3.2 Protein sidechains [i](#)

In the following table, the Percentiles column shows the percent sidechain outliers of the chain as a percentile score with respect to all X-ray entries followed by that with respect to entries of similar resolution.

The Analysed column shows the number of residues for which the sidechain conformation was analysed, and the total number of residues.

Mol	Chain	Analysed	Rotameric	Outliers	Percentiles	
1	A	150/150 (100%)	150 (100%)	0	100	100
2	B	299/299 (100%)	298 (100%)	1 (0%)	92	95
All	All	449/449 (100%)	448 (100%)	1 (0%)	93	96

All (1) residues with a non-rotameric sidechain are listed below:

Mol	Chain	Res	Type
2	B	210	ASP

Sometimes sidechains can be flipped to improve hydrogen bonding and reduce clashes. All (2) such sidechains are listed below:

Mol	Chain	Res	Type
1	A	52	GLN
2	B	87	ASN

### 5.3.3 RNA [i](#)

There are no RNA molecules in this entry.

## 5.4 Non-standard residues in protein, DNA, RNA chains [i](#)

There are no non-standard protein/DNA/RNA residues in this entry.

## 5.5 Carbohydrates [i](#)

There are no monosaccharides in this entry.

## 5.6 Ligand geometry [i](#)

Of 10 ligands modelled in this entry, 2 are monoatomic - leaving 8 for Mogul analysis.

In the following table, the Counts columns list the number of bonds (or angles) for which Mogul statistics could be retrieved, the number of bonds (or angles) that are observed in the model and the number of bonds (or angles) that are defined in the Chemical Component Dictionary. The Link column lists molecule types, if any, to which the group is linked. The Z score for a bond length (or angle) is the number of standard deviations the observed value is removed from the expected value. A bond length (or angle) with  $|Z| > 2$  is considered an outlier worth inspection. RMSZ is the root-mean-square of all Z scores of the bond lengths (or angles).

Mol	Type	Chain	Res	Link	Bond lengths			Bond angles		
					Counts	RMSZ	# Z  > 2	Counts	RMSZ	# Z  > 2
5	EDO	A	169	-	3,3,3	0.57	0	2,2,2	0.33	0
7	EPE	B	334	-	15,15,15	0.81	1 (6%)	18,20,20	1.78	4 (22%)
7	EPE	B	333	-	15,15,15	1.03	1 (6%)	18,20,20	1.96	5 (27%)
5	EDO	B	331	-	3,3,3	0.61	0	2,2,2	0.19	0
6	ACT	B	329	3	3,3,3	0.86	0	3,3,3	1.48	0
5	EDO	A	170	-	3,3,3	0.53	0	2,2,2	0.27	0
5	EDO	B	332	-	3,3,3	0.41	0	2,2,2	0.86	0
6	ACT	B	330	-	3,3,3	0.75	0	3,3,3	1.26	0

In the following table, the Chirals column lists the number of chiral outliers, the number of chiral centers analysed, the number of these observed in the model and the number defined in the Chemical Component Dictionary. Similar counts are reported in the Torsion and Rings columns. '-' means no outliers of that kind were identified.

Mol	Type	Chain	Res	Link	Chirals	Torsions	Rings
5	EDO	A	169	-	-	0/1/1/1	-
7	EPE	B	334	-	-	6/9/19/19	0/1/1/1
7	EPE	B	333	-	-	1/9/19/19	0/1/1/1
5	EDO	B	331	-	-	1/1/1/1	-
5	EDO	A	170	-	-	1/1/1/1	-
5	EDO	B	332	-	-	1/1/1/1	-

All (2) bond length outliers are listed below:

Mol	Chain	Res	Type	Atoms	Z	Observed(Å)	Ideal(Å)
7	B	333	EPE	C10-S	3.66	1.82	1.77

*Continued on next page...*

Continued from previous page...

Mol	Chain	Res	Type	Atoms	Z	Observed(Å)	Ideal(Å)
7	B	334	EPE	C10-S	2.68	1.81	1.77

All (9) bond angle outliers are listed below:

Mol	Chain	Res	Type	Atoms	Z	Observed(°)	Ideal(°)
7	B	334	EPE	C5-N4-C3	4.32	118.56	108.83
7	B	333	EPE	C5-N4-C3	4.00	117.84	108.83
7	B	333	EPE	C7-N4-C3	3.73	120.78	111.23
7	B	333	EPE	C7-N4-C5	3.45	120.05	111.23
7	B	333	EPE	O1S-S-C10	3.40	111.02	106.92
7	B	334	EPE	C7-N4-C3	3.04	119.01	111.23
7	B	334	EPE	C7-N4-C5	3.01	118.94	111.23
7	B	334	EPE	O2S-S-C10	2.90	110.41	106.92
7	B	333	EPE	O2S-S-O1S	-2.24	106.20	113.95

There are no chirality outliers.

All (10) torsion outliers are listed below:

Mol	Chain	Res	Type	Atoms
7	B	334	EPE	C10-C9-N1-C2
7	B	334	EPE	C10-C9-N1-C6
7	B	334	EPE	C9-C10-S-O1S
7	B	334	EPE	C9-C10-S-O3S
5	A	170	EDO	O1-C1-C2-O2
7	B	333	EPE	C8-C7-N4-C5
5	B	331	EDO	O1-C1-C2-O2
7	B	334	EPE	C9-C10-S-O2S
7	B	334	EPE	C8-C7-N4-C3
5	B	332	EDO	O1-C1-C2-O2

There are no ring outliers.

1 monomer is involved in 2 short contacts:

Mol	Chain	Res	Type	Clashes	Symm-Clashes
7	B	334	EPE	2	0

## 5.7 Other polymers [i](#)

There are no such residues in this entry.

## 5.8 Polymer linkage issues

There are no chain breaks in this entry.

## 6 Fit of model and data

### 6.1 Protein, DNA and RNA chains

In the following table, the column labelled ‘#RSRZ > 2’ contains the number (and percentage) of RSRZ outliers, followed by percent RSRZ outliers for the chain as percentile scores relative to all X-ray entries and entries of similar resolution. The OWAB column contains the minimum, median, 95<sup>th</sup> percentile and maximum values of the occupancy-weighted average B-factor per residue. The column labelled ‘Q < 0.9’ lists the number of (and percentage) of residues with an average occupancy less than 0.9.

Mol	Chain	Analysed	<RSRZ>	#RSRZ>2	OWAB(Å <sup>2</sup> )	Q<0.9
1	A	166/166 (100%)	0.71	19 (11%) <b>5</b> <b>6</b>	17, 30, 72, 97	0
2	B	329/329 (100%)	0.27	23 (6%) <b>16</b> <b>20</b>	17, 32, 65, 86	0
All	All	495/495 (100%)	0.42	42 (8%) <b>10</b> <b>13</b>	17, 31, 71, 97	0

All (42) RSRZ outliers are listed below:

Mol	Chain	Res	Type	RSRZ
1	A	45	ALA	12.8
1	A	46	GLN	8.8
1	A	47	GLN	8.0
2	B	75	GLY	7.9
1	A	43	VAL	7.1
1	A	44	GLY	6.4
2	B	80	PRO	6.3
1	A	104	VAL	4.9
2	B	208	LYS	4.7
2	B	63	ASN	4.7
2	B	81	LEU	4.4
2	B	207	ILE	4.4
2	B	82	ASN	4.2
2	B	205	VAL	4.2
1	A	48	ILE	4.0
2	B	209	ASN	4.0
1	A	41	GLU	3.9
1	A	42	LYS	3.8
2	B	206	ARG	3.7
2	B	66	ASP	3.7
2	B	83	ARG	3.6
1	A	106	VAL	3.6
2	B	76	LYS	3.5
1	A	40	GLN	3.4

*Continued on next page...*

*Continued from previous page...*

Mol	Chain	Res	Type	RSRZ
1	A	111	LEU	3.3
2	B	65	LYS	3.1
1	A	105	GLY	3.0
2	B	77	THR	2.9
1	A	161	ARG	2.6
1	A	166	GLU	2.6
1	A	107	GLN	2.6
1	A	100	VAL	2.5
2	B	271	TRP	2.4
2	B	79	ARG	2.3
2	B	59	SER	2.2
2	B	111	LYS	2.2
2	B	74	ILE	2.2
2	B	68	VAL	2.2
2	B	78	ARG	2.1
2	B	87	ASN	2.1
1	A	108	GLU	2.1
1	A	101	MET	2.0

## 6.2 Non-standard residues in protein, DNA, RNA chains [i](#)

There are no non-standard protein/DNA/RNA residues in this entry.

## 6.3 Carbohydrates [i](#)

There are no monosaccharides in this entry.

## 6.4 Ligands [i](#)

In the following table, the Atoms column lists the number of modelled atoms in the group and the number defined in the chemical component dictionary. The B-factors column lists the minimum, median, 95<sup>th</sup> percentile and maximum values of B factors of atoms in the group. The column labelled 'Q< 0.9' lists the number of atoms with occupancy less than 0.9.

Mol	Type	Chain	Res	Atoms	RSCC	RSR	B-factors(Å <sup>2</sup> )	Q<0.9
5	EDO	B	331	4/4	0.69	0.24	32,37,42,43	0
5	EDO	A	170	4/4	0.84	0.35	34,35,37,51	0
5	EDO	A	169	4/4	0.87	0.27	40,40,45,46	0
7	EPE	B	334	15/15	0.88	0.27	43,49,69,71	0
7	EPE	B	333	15/15	0.92	0.15	26,39,45,47	0

*Continued on next page...*



*Continued from previous page...*

Mol	Type	Chain	Res	Atoms	RSCC	RSR	B-factors( $\text{\AA}^2$ )	Q<0.9
5	EDO	B	332	4/4	0.92	0.15	39,40,42,50	0
6	ACT	B	330	4/4	0.94	0.14	21,30,32,33	0
6	ACT	B	329	4/4	0.96	0.13	22,24,24,29	0
4	CL	A	168	1/1	0.99	0.13	26,26,26,26	0
3	ZN	A	167	1/1	1.00	0.10	24,24,24,24	0

## 6.5 Other polymers [i](#)

There are no such residues in this entry.