



Full wwPDB X-ray Structure Validation Report ⓘ

Aug 6, 2020 – 10:08 AM BST

PDB ID : 4OJE
Title : Crystal structure of a C-terminally truncated trimeric ectodomain of the C. elegans fusion protein EFF-1
Authors : Krey, T.; Rey, F.A.
Deposited on : 2014-01-21
Resolution : 2.57 Å(reported)

This is a Full wwPDB X-ray Structure Validation Report for a publicly released PDB entry.

We welcome your comments at validation@mail.wwpdb.org

A user guide is available at

<https://www.wwpdb.org/validation/2017/XrayValidationReportHelp>

with specific help available everywhere you see the ⓘ symbol.

The following versions of software and data (see [references ⓘ](#)) were used in the production of this report:

MolProbity : 4.02b-467
Mogul : 1.8.5 (274361), CSD as541be (2020)
Xtriage (Phenix) : 1.13
EDS : 2.13.1
Percentile statistics : 20191225.v01 (using entries in the PDB archive December 25th 2019)
Refmac : 5.8.0158
CCP4 : 7.0.044 (Gargrove)
Ideal geometry (proteins) : Engh & Huber (2001)
Ideal geometry (DNA, RNA) : Parkinson et al. (1996)
Validation Pipeline (wwPDB-VP) : 2.13.1

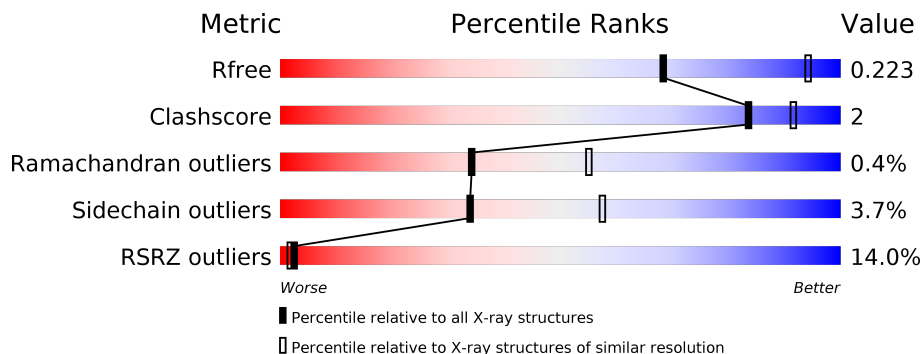
1 Overall quality at a glance

The following experimental techniques were used to determine the structure:

X-RAY DIFFRACTION

The reported resolution of this entry is 2.57 Å.

Percentile scores (ranging between 0-100) for global validation metrics of the entry are shown in the following graphic. The table shows the number of entries on which the scores are based.



Metric	Whole archive (#Entries)	Similar resolution (#Entries, resolution range(Å))
R_{free}	130704	3676 (2.60-2.56)
Clashscore	141614	4049 (2.60-2.56)
Ramachandran outliers	138981	3979 (2.60-2.56)
Sidechain outliers	138945	3979 (2.60-2.56)
RSRZ outliers	127900	3614 (2.60-2.56)

The table below summarises the geometric issues observed across the polymeric chains and their fit to the electron density. The red, orange, yellow and green segments on the lower bar indicate the fraction of residues that contain outliers for ≥ 3 , 2, 1 and 0 types of geometric quality criteria respectively. A grey segment represents the fraction of residues that are not modelled. The numeric value for each fraction is indicated below the corresponding segment, with a dot representing fractions $\leq 5\%$. The upper red bar (where present) indicates the fraction of residues that have poor fit to the electron density. The numeric value is given above the bar.

Mol	Chain	Length	Quality of chain
1	H	526	
2	A	2	

2 Entry composition i

There are 5 unique types of molecules in this entry. The entry contains 3773 atoms, of which 0 are hydrogens and 0 are deuteriums.

In the tables below, the ZeroOcc column contains the number of atoms modelled with zero occupancy, the AltConf column contains the number of residues with at least one atom in alternate conformation and the Trace column contains the number of residues modelled with at most 2 atoms.

- Molecule 1 is a protein called EFF-1A.

Mol	Chain	Residues	Atoms					ZeroOcc	AltConf	Trace
			Total	C	N	O	S			
1	H	457	3638	2277	647	688	26	0	2	0

There are 39 discrepancies between the modelled and reference sequences:

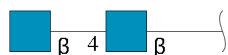
Chain	Residue	Modelled	Actual	Comment	Reference
H	21	ARG	-	expression tag	UNP G5ECA1
H	22	SER	-	expression tag	UNP G5ECA1
H	510	PHE	-	expression tag	UNP G5ECA1
H	511	GLU	-	expression tag	UNP G5ECA1
H	512	ASP	-	expression tag	UNP G5ECA1
H	513	ASP	-	expression tag	UNP G5ECA1
H	514	ASP	-	expression tag	UNP G5ECA1
H	515	ASP	-	expression tag	UNP G5ECA1
H	516	LYS	-	expression tag	UNP G5ECA1
H	517	ALA	-	expression tag	UNP G5ECA1
H	518	GLY	-	expression tag	UNP G5ECA1
H	519	TRP	-	expression tag	UNP G5ECA1
H	520	SER	-	expression tag	UNP G5ECA1
H	521	HIS	-	expression tag	UNP G5ECA1
H	522	PRO	-	expression tag	UNP G5ECA1
H	523	GLN	-	expression tag	UNP G5ECA1
H	524	PHE	-	expression tag	UNP G5ECA1
H	525	GLU	-	expression tag	UNP G5ECA1
H	526	LYS	-	expression tag	UNP G5ECA1
H	527	GLY	-	expression tag	UNP G5ECA1
H	528	GLY	-	expression tag	UNP G5ECA1
H	529	GLY	-	expression tag	UNP G5ECA1
H	530	SER	-	expression tag	UNP G5ECA1
H	531	GLY	-	expression tag	UNP G5ECA1
H	532	GLY	-	expression tag	UNP G5ECA1
H	533	GLY	-	expression tag	UNP G5ECA1
H	534	SER	-	expression tag	UNP G5ECA1

Continued on next page...

Continued from previous page...

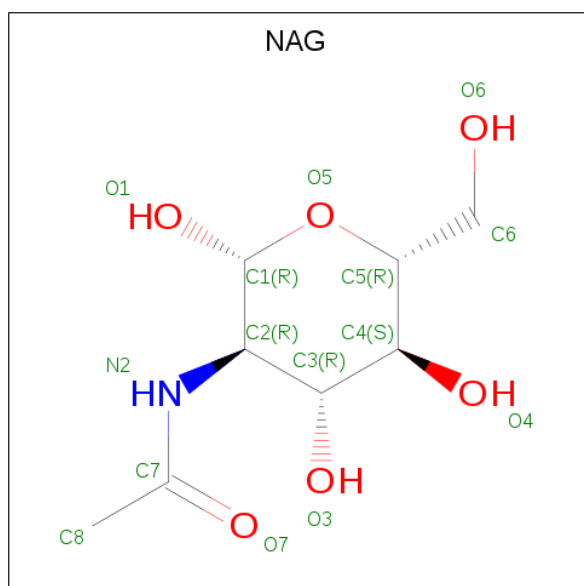
Chain	Residue	Modelled	Actual	Comment	Reference
H	535	GLY	-	expression tag	UNP G5ECA1
H	536	GLY	-	expression tag	UNP G5ECA1
H	537	GLY	-	expression tag	UNP G5ECA1
H	538	SER	-	expression tag	UNP G5ECA1
H	539	TRP	-	expression tag	UNP G5ECA1
H	540	SER	-	expression tag	UNP G5ECA1
H	541	HIS	-	expression tag	UNP G5ECA1
H	542	PRO	-	expression tag	UNP G5ECA1
H	543	GLN	-	expression tag	UNP G5ECA1
H	544	PHE	-	expression tag	UNP G5ECA1
H	545	GLU	-	expression tag	UNP G5ECA1
H	546	LYS	-	expression tag	UNP G5ECA1

- Molecule 2 is an oligosaccharide called 2-acetamido-2-deoxy-beta-D-glucopyranose-(1-4)-2-acetamido-2-deoxy-beta-D-glucopyranose.



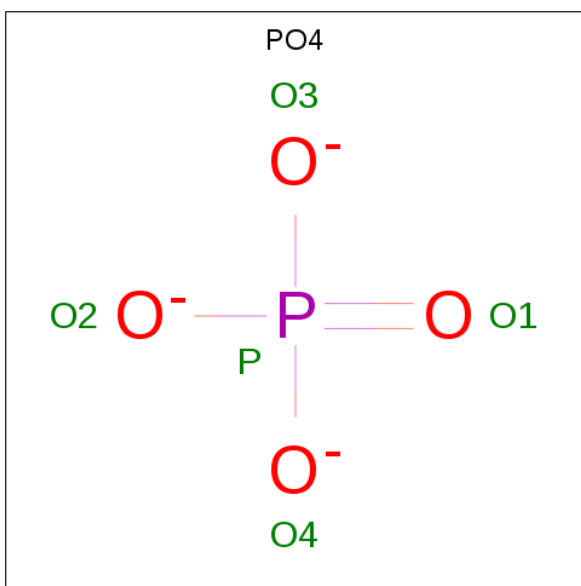
Mol	Chain	Residues	Atoms				ZeroOcc	AltConf	Trace
			Total	C	N	O			
2	A	2	28	16	2	10	0	0	0

- Molecule 3 is 2-acetamido-2-deoxy-beta-D-glucopyranose (three-letter code: NAG) (formula: $C_8H_{15}NO_6$).



Mol	Chain	Residues	Atoms				ZeroOcc	AltConf
3	H	1	Total	C	N	O	0	0
			14	8	1	5		

- Molecule 4 is PHOSPHATE ION (three-letter code: PO4) (formula: O₄P).



Mol	Chain	Residues	Atoms			ZeroOcc	AltConf
4	H	1	Total	O	P	0	0
			5	4	1		
4	H	1	Total	O	P	0	0
			5	4	1		
4	H	1	Total	O	P	0	0
			5	4	1		
4	H	1	Total	O	P	0	0
			5	4	1		

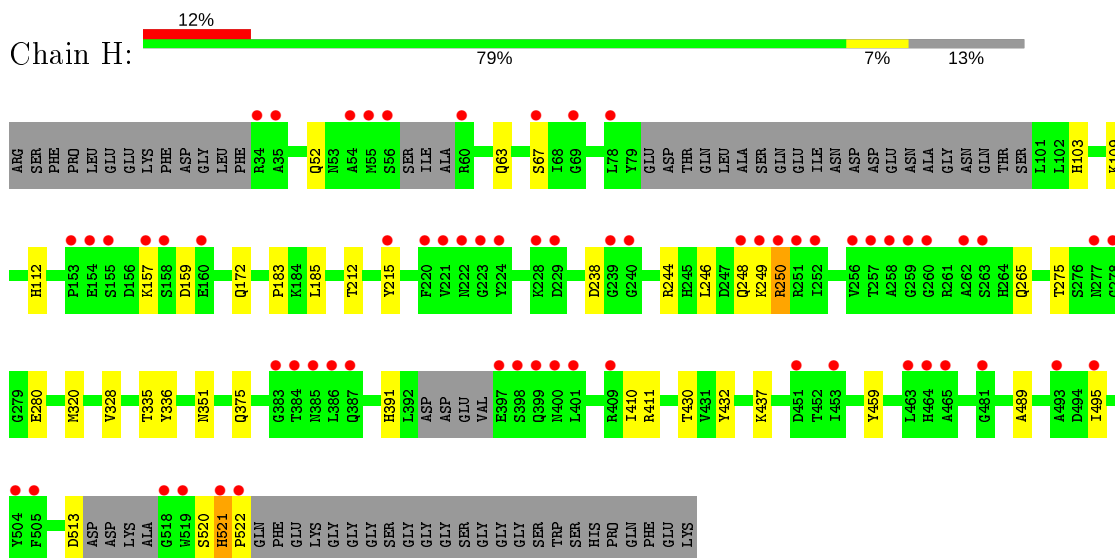
- Molecule 5 is water.

Mol	Chain	Residues	Atoms		ZeroOcc	AltConf
5	H	73	Total	O	0	0
			73	73		

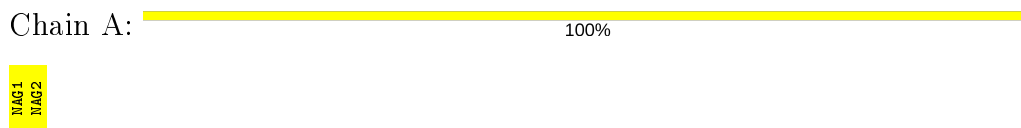
3 Residue-property plots [i](#)

These plots are drawn for all protein, RNA, DNA and oligosaccharide chains in the entry. The first graphic for a chain summarises the proportions of the various outlier classes displayed in the second graphic. The second graphic shows the sequence view annotated by issues in geometry and electron density. Residues are color-coded according to the number of geometric quality criteria for which they contain at least one outlier: green = 0, yellow = 1, orange = 2 and red = 3 or more. A red dot above a residue indicates a poor fit to the electron density ($RSRZ > 2$). Stretches of 2 or more consecutive residues without any outlier are shown as a green connector. Residues present in the sample, but not in the model, are shown in grey.

- Molecule 1: EFF-1A



- Molecule 2: 2-acetamido-2-deoxy-beta-D-glucopyranose-(1-4)-2-acetamido-2-deoxy-beta-D-glucopyranose



4 Data and refinement statistics

Property	Value	Source
Space group	P 63	Depositor
Cell constants a, b, c, α , β , γ	106.89Å 106.89Å 135.62Å 90.00° 90.00° 120.00°	Depositor
Resolution (Å)	49.72 – 2.57 49.72 – 2.57	Depositor EDS
% Data completeness (in resolution range)	99.6 (49.72-2.57) 99.6 (49.72-2.57)	Depositor EDS
R_{merge}	(Not available)	Depositor
R_{sym}	(Not available)	Depositor
$\langle I/\sigma(I) \rangle$ ¹	1.59 (at 2.58Å)	Xtrriage
Refinement program	BUSTER 2.11.2	Depositor
R, R_{free}	0.179 , 0.221 0.182 , 0.223	Depositor DCC
R_{free} test set	1406 reflections (5.04%)	wwPDB-VP
Wilson B-factor (Å ²)	50.7	Xtrriage
Anisotropy	0.384	Xtrriage
Bulk solvent k_{sol} (e/Å ³), B_{sol} (Å ²)	0.33 , 50.1	EDS
L-test for twinning ²	$\langle L \rangle = 0.48$, $\langle L^2 \rangle = 0.31$	Xtrriage
Estimated twinning fraction	0.065 for h,-h-k,-l	Xtrriage
F_o, F_c correlation	0.94	EDS
Total number of atoms	3773	wwPDB-VP
Average B, all atoms (Å ²)	65.0	wwPDB-VP

Xtrriage's analysis on translational NCS is as follows: *The largest off-origin peak in the Patterson function is 4.06% of the height of the origin peak. No significant pseudotranslation is detected.*

¹ Intensities estimated from amplitudes.

² Theoretical values of $\langle |L| \rangle$, $\langle L^2 \rangle$ for acentric reflections are 0.5, 0.333 respectively for untwinned datasets, and 0.375, 0.2 for perfectly twinned datasets.

5 Model quality [i](#)

5.1 Standard geometry [i](#)

Bond lengths and bond angles in the following residue types are not validated in this section: PO4, NAG

The Z score for a bond length (or angle) is the number of standard deviations the observed value is removed from the expected value. A bond length (or angle) with $|Z| > 5$ is considered an outlier worth inspection. RMSZ is the root-mean-square of all Z scores of the bond lengths (or angles).

Mol	Chain	Bond lengths		Bond angles	
		RMSZ	# Z >5	RMSZ	# Z >5
1	H	0.52	1/3728 (0.0%)	0.74	0/5039

All (1) bond length outliers are listed below:

Mol	Chain	Res	Type	Atoms	Z	Observed(Å)	Ideal(Å)
1	H	320	MET	SD-CE	-6.92	1.39	1.77

There are no bond angle outliers.

There are no chirality outliers.

There are no planarity outliers.

5.2 Too-close contacts [i](#)

In the following table, the Non-H and H(model) columns list the number of non-hydrogen atoms and hydrogen atoms in the chain respectively. The H(added) column lists the number of hydrogen atoms added and optimized by MolProbity. The Clashes column lists the number of clashes within the asymmetric unit, whereas Symm-Clashes lists symmetry related clashes.

Mol	Chain	Non-H	H(model)	H(added)	Clashes	Symm-Clashes
1	H	3638	0	3498	17	0
2	A	28	0	25	0	0
3	H	14	0	13	0	0
4	H	20	0	0	0	0
5	H	73	0	0	1	0
All	All	3773	0	3536	17	0

The all-atom clashscore is defined as the number of clashes found per 1000 atoms (including hydrogen atoms). The all-atom clashscore for this structure is 2.

All (17) close contacts within the same asymmetric unit are listed below, sorted by their clash magnitude.

Atom-1	Atom-2	Interatomic distance (Å)	Clash overlap (Å)
1:H:335:THR:HG22	1:H:522:PRO:HG3	1.60	0.82
1:H:185:LEU:HD13	1:H:328:VAL:HG12	1.86	0.58
1:H:521:HIS:HB3	1:H:522:PRO:HD2	1.88	0.55
1:H:250:ARG:HG2	1:H:250:ARG:O	2.08	0.53
1:H:172:GLN:HB2	1:H:183:PRO:HB2	1.93	0.50
1:H:437:LYS:HG3	1:H:459:TYR:CE2	2.47	0.49
1:H:335:THR:HA	1:H:522:PRO:HB3	1.96	0.48
1:H:112:HIS:CE1	1:H:265:GLN:HG3	2.50	0.47
1:H:495:ILE:H	1:H:495:ILE:HD12	1.80	0.47
1:H:63:GLN:HG2	1:H:391:HIS:HB3	1.99	0.45
1:H:375:GLN:HG2	5:H:1240:HOH:O	2.18	0.44
1:H:410:ILE:HG22	1:H:489:ALA:HB2	2.01	0.42
1:H:411:ARG:NH2	1:H:432:TYR:HB3	2.36	0.41
1:H:103:HIS:HB3	1:H:215:TYR:HE1	1.86	0.41
1:H:109:LYS:HB2	1:H:212:THR:HB	2.03	0.41
1:H:172:GLN:O	1:H:183:PRO:HD2	2.21	0.40
1:H:336:TYR:CZ	1:H:522:PRO:HA	2.57	0.40

There are no symmetry-related clashes.

5.3 Torsion angles [i](#)

5.3.1 Protein backbone [i](#)

In the following table, the Percentiles column shows the percent Ramachandran outliers of the chain as a percentile score with respect to all X-ray entries followed by that with respect to entries of similar resolution.

The Analysed column shows the number of residues for which the backbone conformation was analysed, and the total number of residues.

Mol	Chain	Analysed	Favoured	Allowed	Outliers	Percentiles
1	H	449/526 (85%)	427 (95%)	20 (4%)	2 (0%)	34 55

All (2) Ramachandran outliers are listed below:

Mol	Chain	Res	Type
1	H	157	LYS
1	H	280	GLU

5.3.2 Protein sidechains [i](#)

In the following table, the Percentiles column shows the percent sidechain outliers of the chain as a percentile score with respect to all X-ray entries followed by that with respect to entries of similar resolution.

The Analysed column shows the number of residues for which the sidechain conformation was analysed, and the total number of residues.

Mol	Chain	Analysed	Rotameric	Outliers	Percentiles
1	H	405/457 (89%)	390 (96%)	15 (4%)	34 57

All (15) residues with a non-rotameric sidechain are listed below:

Mol	Chain	Res	Type
1	H	52	GLN
1	H	67	SER
1	H	159	ASP
1	H	238	ASP
1	H	244	ARG
1	H	246	LEU
1	H	248	GLN
1	H	249	LYS
1	H	250	ARG
1	H	275	THR
1	H	351	ASN
1	H	430	THR
1	H	513	ASP
1	H	520	SER
1	H	521	HIS

Some sidechains can be flipped to improve hydrogen bonding and reduce clashes. There are no such sidechains identified.

5.3.3 RNA [i](#)

There are no RNA molecules in this entry.

5.4 Non-standard residues in protein, DNA, RNA chains [i](#)

There are no non-standard protein/DNA/RNA residues in this entry.

5.5 Carbohydrates i

2 monosaccharides are modelled in this entry.

In the following table, the Counts columns list the number of bonds (or angles) for which Mogul statistics could be retrieved, the number of bonds (or angles) that are observed in the model and the number of bonds (or angles) that are defined in the Chemical Component Dictionary. The Link column lists molecule types, if any, to which the group is linked. The Z score for a bond length (or angle) is the number of standard deviations the observed value is removed from the expected value. A bond length (or angle) with $|Z| > 2$ is considered an outlier worth inspection. RMSZ is the root-mean-square of all Z scores of the bond lengths (or angles).

Mol	Type	Chain	Res	Link	Bond lengths			Bond angles		
					Counts	RMSZ	# Z > 2	Counts	RMSZ	# Z > 2
2	NAG	A	1	1,2	14,14,15	0.36	0	17,19,21	1.85	5 (29%)
2	NAG	A	2	2	14,14,15	0.38	0	17,19,21	1.52	2 (11%)

In the following table, the Chirals column lists the number of chiral outliers, the number of chiral centers analysed, the number of these observed in the model and the number defined in the Chemical Component Dictionary. Similar counts are reported in the Torsion and Rings columns. '-' means no outliers of that kind were identified.

Mol	Type	Chain	Res	Link	Chirals	Torsions	Rings
2	NAG	A	1	1,2	-	0/6/23/26	0/1/1/1
2	NAG	A	2	2	-	0/6/23/26	0/1/1/1

There are no bond length outliers.

All (7) bond angle outliers are listed below:

Mol	Chain	Res	Type	Atoms	Z	Observed(°)	Ideal(°)
2	A	2	NAG	C1-O5-C5	5.14	119.16	112.19
2	A	1	NAG	C1-O5-C5	4.64	118.47	112.19
2	A	1	NAG	O5-C1-C2	3.34	116.56	111.29
2	A	1	NAG	O4-C4-C5	2.97	116.67	109.30
2	A	1	NAG	O4-C4-C3	2.88	117.01	110.35
2	A	2	NAG	O5-C1-C2	2.65	115.47	111.29
2	A	1	NAG	C1-C2-N2	2.06	114.01	110.49

There are no chirality outliers.

There are no torsion outliers.

There are no ring outliers.

No monomer is involved in short contacts.

5.6 Ligand geometry

5 ligands are modelled in this entry.

In the following table, the Counts columns list the number of bonds (or angles) for which Mogul statistics could be retrieved, the number of bonds (or angles) that are observed in the model and the number of bonds (or angles) that are defined in the Chemical Component Dictionary. The Link column lists molecule types, if any, to which the group is linked. The Z score for a bond length (or angle) is the number of standard deviations the observed value is removed from the expected value. A bond length (or angle) with $|Z| > 2$ is considered an outlier worth inspection. RMSZ is the root-mean-square of all Z scores of the bond lengths (or angles).

Mol	Type	Chain	Res	Link	Bond lengths			Bond angles		
					Counts	RMSZ	# Z > 2	Counts	RMSZ	# Z > 2
4	PO4	H	1106	-	4,4,4	1.48	1 (25%)	6,6,6	0.55	0
3	NAG	H	1103	1	14,14,15	0.30	0	17,19,21	0.56	0
4	PO4	H	1105	-	4,4,4	1.29	1 (25%)	6,6,6	0.79	0
4	PO4	H	1107	-	4,4,4	1.25	1 (25%)	6,6,6	0.45	0
4	PO4	H	1104	-	4,4,4	1.00	0	6,6,6	0.43	0

In the following table, the Chirals column lists the number of chiral outliers, the number of chiral centers analysed, the number of these observed in the model and the number defined in the Chemical Component Dictionary. Similar counts are reported in the Torsion and Rings columns. '-' means no outliers of that kind were identified.

Mol	Type	Chain	Res	Link	Chirals	Torsions	Rings
3	NAG	H	1103	1	-	0/6/23/26	0/1/1/1

All (3) bond length outliers are listed below:

Mol	Chain	Res	Type	Atoms	Z	Observed(Å)	Ideal(Å)
4	H	1106	PO4	P-O1	2.75	1.57	1.50
4	H	1107	PO4	P-O1	2.23	1.56	1.50
4	H	1105	PO4	P-O1	2.22	1.56	1.50

There are no bond angle outliers.

There are no chirality outliers.

There are no torsion outliers.

There are no ring outliers.

No monomer is involved in short contacts.

5.7 Other polymers [i](#)

There are no such residues in this entry.

5.8 Polymer linkage issues [i](#)

There are no chain breaks in this entry.

6 Fit of model and data

6.1 Protein, DNA and RNA chains

In the following table, the column labelled ‘#RSRZ> 2’ contains the number (and percentage) of RSRZ outliers, followed by percent RSRZ outliers for the chain as percentile scores relative to all X-ray entries and entries of similar resolution. The OWAB column contains the minimum, median, 95th percentile and maximum values of the occupancy-weighted average B-factor per residue. The column labelled ‘Q< 0.9’ lists the number of (and percentage) of residues with an average occupancy less than 0.9.

Mol	Chain	Analysed	<RSRZ>	#RSRZ>2	OWAB(Å ²)	Q<0.9
1	H	457/526 (86%)	0.53	64 (14%) 2 2	30, 57, 117, 164	0

All (64) RSRZ outliers are listed below:

Mol	Chain	Res	Type	RSRZ
1	H	463	LEU	7.4
1	H	56	SER	6.8
1	H	55	MET	6.7
1	H	154	GLU	6.2
1	H	157	LYS	6.1
1	H	155	SER	5.5
1	H	465	ALA	5.0
1	H	277	ASN	4.6
1	H	384	THR	4.4
1	H	35	ALA	4.4
1	H	522	PRO	4.4
1	H	464	HIS	4.3
1	H	158	SER	4.3
1	H	248	GLN	4.3
1	H	224	TYR	4.2
1	H	60	ARG	4.2
1	H	34	ARG	4.1
1	H	228	LYS	4.0
1	H	222	ASN	4.0
1	H	257	THR	3.9
1	H	223	GLY	3.9
1	H	258	ALA	3.9
1	H	278	GLY	3.8
1	H	229	ASP	3.6
1	H	251	ARG	3.5
1	H	399	GLN	3.5
1	H	54	ALA	3.5

Continued on next page...

Continued from previous page...

Mol	Chain	Res	Type	RSRZ
1	H	385	ASN	3.3
1	H	221	VAL	3.3
1	H	78	LEU	3.3
1	H	398	SER	3.2
1	H	386	LEU	3.2
1	H	67	SER	3.1
1	H	495	ILE	3.1
1	H	259	GLY	3.1
1	H	260	GLY	3.1
1	H	263	SER	3.0
1	H	505	PHE	2.8
1	H	451	ASP	2.8
1	H	153	PRO	2.8
1	H	220	PHE	2.7
1	H	262	ALA	2.7
1	H	397	GLU	2.7
1	H	250	ARG	2.7
1	H	521	HIS	2.6
1	H	252	ILE	2.5
1	H	409	ARG	2.4
1	H	493	ALA	2.4
1	H	239	GLY	2.4
1	H	240	GLY	2.3
1	H	453	ILE	2.3
1	H	401	LEU	2.3
1	H	518	GLY	2.2
1	H	519	TRP	2.2
1	H	160	GLU	2.2
1	H	387	GLN	2.2
1	H	400	ASN	2.2
1	H	481	GLY	2.2
1	H	504	TYR	2.2
1	H	249	LYS	2.1
1	H	383	GLY	2.1
1	H	215	TYR	2.1
1	H	256	VAL	2.0
1	H	69	GLY	2.0

6.2 Non-standard residues in protein, DNA, RNA chains

There are no non-standard protein/DNA/RNA residues in this entry.

6.3 Carbohydrates [i](#)

In the following table, the Atoms column lists the number of modelled atoms in the group and the number defined in the chemical component dictionary. The B-factors column lists the minimum, median, 95th percentile and maximum values of B factors of atoms in the group. The column labelled 'Q< 0.9' lists the number of atoms with occupancy less than 0.9.

Mol	Type	Chain	Res	Atoms	RSCC	RSR	B-factors(Å ²)	Q<0.9
2	NAG	A	2	14/15	0.82	0.34	103,108,109,110	0
2	NAG	A	1	14/15	0.94	0.18	89,92,98,105	0

6.4 Ligands [i](#)

In the following table, the Atoms column lists the number of modelled atoms in the group and the number defined in the chemical component dictionary. The B-factors column lists the minimum, median, 95th percentile and maximum values of B factors of atoms in the group. The column labelled 'Q< 0.9' lists the number of atoms with occupancy less than 0.9.

Mol	Type	Chain	Res	Atoms	RSCC	RSR	B-factors(Å ²)	Q<0.9
4	PO4	H	1107	5/5	0.75	0.34	165,166,166,167	0
3	NAG	H	1103	14/15	0.87	0.36	105,110,113,114	0
4	PO4	H	1106	5/5	0.89	0.17	130,130,130,131	0
4	PO4	H	1105	5/5	0.93	0.25	106,106,108,108	0
4	PO4	H	1104	5/5	0.99	0.26	28,32,32,32	5

6.5 Other polymers [i](#)

There are no such residues in this entry.