



## Full wwPDB EM Validation Report ⓘ

Sep 9, 2021 – 09:49 AM BST

PDB ID : 7OIE  
EMDB ID : EMD-12927  
Title : Cryo-EM structure of late human 39S mitoribosome assembly intermediates, state 5B  
Authors : Cheng, J.; Berninghausen, O.; Beckmann, R.  
Deposited on : 2021-05-11  
Resolution : 3.50 Å(reported)

This is a Full wwPDB EM Validation Report for a publicly released PDB entry.

We welcome your comments at [validation@mail.wwpdb.org](mailto:validation@mail.wwpdb.org)

A user guide is available at

<https://www.wwpdb.org/validation/2017/EMValidationReportHelp>

with specific help available everywhere you see the ⓘ symbol.

---

The following versions of software and data (see [references ⓘ](#)) were used in the production of this report:

EMDB validation analysis : 0.0.0.dev97  
Mogul : 1.8.5 (274361), CSD as541be (2020)  
MolProbity : **FAILED**  
buster-report : 1.1.7 (2018)  
Percentile statistics : 20191225.v01 (using entries in the PDB archive December 25th 2019)  
Ideal geometry (proteins) : Engh & Huber (2001)  
Ideal geometry (DNA, RNA) : Parkinson et al. (1996)  
Validation Pipeline (wwPDB-VP) : 2.23.1

## 1 Overall quality at a glance

The following experimental techniques were used to determine the structure:

*ELECTRON MICROSCOPY*

The reported resolution of this entry is 3.50 Å.

There are no overall percentile quality scores available for this entry.

MolProbity failed to run properly - the sequence quality summary graphics cannot be shown.

## 2 Entry composition [i](#)

There are 58 unique types of molecules in this entry. The entry contains 99578 atoms, of which 0 are hydrogens and 0 are deuteriums.

In the tables below, the AltConf column contains the number of residues with at least one atom in alternate conformation and the Trace column contains the number of residues modelled with at most 2 atoms.

- Molecule 1 is a protein called 39S ribosomal protein L2, mitochondrial.

Mol	Chain	Residues	Atoms					AltConf	Trace
			Total	C	N	O	S		
1	D	236	Total	C	N	O	S	0	0
			1842	1145	373	315	9		

- Molecule 2 is a protein called 39S ribosomal protein L3, mitochondrial.

Mol	Chain	Residues	Atoms					AltConf	Trace
			Total	C	N	O	S		
2	E	304	Total	C	N	O	S	0	0
			2396	1539	416	430	11		

- Molecule 3 is a protein called 39S ribosomal protein L4, mitochondrial.

Mol	Chain	Residues	Atoms					AltConf	Trace
			Total	C	N	O	S		
3	F	250	Total	C	N	O	S	0	0
			2013	1294	365	348	6		

- Molecule 4 is a protein called 39S ribosomal protein L9, mitochondrial.

Mol	Chain	Residues	Atoms				AltConf	Trace
			Total	C	N	O		
4	H	95	Total	C	N	O	0	0
			784	498	152	134		

- Molecule 5 is a protein called 39S ribosomal protein L10, mitochondrial.

Mol	Chain	Residues	Atoms					AltConf	Trace
			Total	C	N	O	S		
5	I	158	Total	C	N	O	S	0	0
			1283	828	235	210	10		

- Molecule 6 is a protein called 39S ribosomal protein L11, mitochondrial.

Mol	Chain	Residues	Atoms					AltConf	Trace
			Total	C	N	O	S		
6	J	140	Total	C	N	O	S	0	0
			1061	680	192	187	2		

- Molecule 7 is a protein called 39S ribosomal protein L13, mitochondrial.

Mol	Chain	Residues	Atoms					AltConf	Trace
			Total	C	N	O	S		
7	K	177	Total	C	N	O	S	0	0
			1451	934	259	251	7		

- Molecule 8 is a protein called 39S ribosomal protein L14, mitochondrial.

Mol	Chain	Residues	Atoms					AltConf	Trace
			Total	C	N	O	S		
8	L	115	Total	C	N	O	S	0	0
			889	559	171	154	5		

- Molecule 9 is a protein called 39S ribosomal protein L15, mitochondrial.

Mol	Chain	Residues	Atoms					AltConf	Trace
			Total	C	N	O	S		
9	M	287	Total	C	N	O	S	0	0
			2305	1472	425	402	6		

- Molecule 10 is a protein called 39S ribosomal protein L16, mitochondrial.

Mol	Chain	Residues	Atoms					AltConf	Trace
			Total	C	N	O	S		
10	N	205	Total	C	N	O	S	0	0
			1654	1056	308	280	10		

- Molecule 11 is a protein called 39S ribosomal protein L17, mitochondrial.

Mol	Chain	Residues	Atoms					AltConf	Trace
			Total	C	N	O	S		
11	O	152	Total	C	N	O	S	0	0
			1245	784	239	215	7		

- Molecule 12 is a protein called 39S ribosomal protein L18, mitochondrial.

Mol	Chain	Residues	Atoms					AltConf	Trace
			Total	C	N	O	S		
12	P	141	Total	C	N	O	S	0	0
			1148	719	221	203	5		

- Molecule 13 is a protein called 39S ribosomal protein L19, mitochondrial.

Mol	Chain	Residues	Atoms					AltConf	Trace
			Total	C	N	O	S		
13	Q	217	Total	C	N	O	S	0	0
			1805	1159	317	320	9		

- Molecule 14 is a protein called 39S ribosomal protein L20, mitochondrial.

Mol	Chain	Residues	Atoms					AltConf	Trace
			Total	C	N	O	S		
14	R	140	1153	732	231	186	4	0	0

- Molecule 15 is a protein called 39S ribosomal protein L21, mitochondrial.

Mol	Chain	Residues	Atoms					AltConf	Trace
			Total	C	N	O	S		
15	S	156	1251	806	222	219	4	0	0

- Molecule 16 is a protein called 39S ribosomal protein L22, mitochondrial.

Mol	Chain	Residues	Atoms					AltConf	Trace
			Total	C	N	O	S		
16	T	159	1305	835	239	224	7	0	0

- Molecule 17 is a protein called 39S ribosomal protein L23, mitochondrial.

Mol	Chain	Residues	Atoms					AltConf	Trace
			Total	C	N	O	S		
17	U	139	1154	734	220	197	3	0	0

- Molecule 18 is a protein called 39S ribosomal protein L24, mitochondrial.

Mol	Chain	Residues	Atoms					AltConf	Trace
			Total	C	N	O	S		
18	V	192	1575	1003	281	283	8	0	0

- Molecule 19 is a protein called 39S ribosomal protein L27, mitochondrial.

Mol	Chain	Residues	Atoms					AltConf	Trace
			Total	C	N	O	S		
19	W	109	859	552	162	142	3	0	0

- Molecule 20 is a protein called 39S ribosomal protein L28, mitochondrial.

Mol	Chain	Residues	Atoms					AltConf	Trace
			Total	C	N	O	S		
20	X	243	2035	1317	351	362	5	0	0

- Molecule 21 is a protein called 39S ribosomal protein L47, mitochondrial.

Mol	Chain	Residues	Atoms					AltConf	Trace
21	Y	176	Total	C	N	O	S	0	0
			1517	970	291	252	4		

- Molecule 22 is a protein called 39S ribosomal protein L30, mitochondrial.

Mol	Chain	Residues	Atoms					AltConf	Trace
22	Z	120	Total	C	N	O	S	0	0
			978	626	183	166	3		

- Molecule 23 is a protein called 39S ribosomal protein L32, mitochondrial.

Mol	Chain	Residues	Atoms					AltConf	Trace
23	0	108	Total	C	N	O	S	0	0
			880	545	172	157	6		

- Molecule 24 is a protein called 39S ribosomal protein L33, mitochondrial.

Mol	Chain	Residues	Atoms					AltConf	Trace
24	1	52	Total	C	N	O	S	0	0
			433	278	83	70	2		

- Molecule 25 is a protein called 39S ribosomal protein L34, mitochondrial.

Mol	Chain	Residues	Atoms					AltConf	Trace
25	2	43	Total	C	N	O	S	0	0
			351	218	76	56	1		

- Molecule 26 is a protein called 39S ribosomal protein L35, mitochondrial.

Mol	Chain	Residues	Atoms					AltConf	Trace
26	3	95	Total	C	N	O	S	0	0
			831	539	162	127	3		

- Molecule 27 is a protein called 39S ribosomal protein L36, mitochondrial.

Mol	Chain	Residues	Atoms					AltConf	Trace
27	4	36	Total	C	N	O	S	0	0
			322	203	70	46	3		

- Molecule 28 is a protein called 39S ribosomal protein L37, mitochondrial.

Mol	Chain	Residues	Atoms					AltConf	Trace
			Total	C	N	O	S		
28	5	387	3156	2039	548	558	11	0	0

- Molecule 29 is a protein called 39S ribosomal protein L38, mitochondrial.

Mol	Chain	Residues	Atoms					AltConf	Trace
			Total	C	N	O	S		
29	6	324	2640	1694	470	468	8	0	0

- Molecule 30 is a protein called 39S ribosomal protein L39, mitochondrial.

Mol	Chain	Residues	Atoms					AltConf	Trace
			Total	C	N	O	S		
30	7	287	2334	1495	397	425	17	0	0

- Molecule 31 is a protein called 39S ribosomal protein L40, mitochondrial.

Mol	Chain	Residues	Atoms					AltConf	Trace
			Total	C	N	O	S		
31	8	99	836	535	144	155	2	0	0

- Molecule 32 is a protein called 39S ribosomal protein L41, mitochondrial.

Mol	Chain	Residues	Atoms					AltConf	Trace
			Total	C	N	O	S		
32	9	117	947	614	163	168	2	0	0

- Molecule 33 is a protein called 39S ribosomal protein L42, mitochondrial.

Mol	Chain	Residues	Atoms					AltConf	Trace
			Total	C	N	O	S		
33	a	73	611	385	115	106	5	0	0

- Molecule 34 is a protein called 39S ribosomal protein L43, mitochondrial.

Mol	Chain	Residues	Atoms					AltConf	Trace
			Total	C	N	O	S		
34	b	148	1178	733	229	213	3	0	0

- Molecule 35 is a protein called 39S ribosomal protein L44, mitochondrial.

Mol	Chain	Residues	Atoms					AltConf	Trace
35	c	275	Total	C	N	O	S	0	0
			2217	1415	383	410	9		

- Molecule 36 is a protein called 39S ribosomal protein L45, mitochondrial.

Mol	Chain	Residues	Atoms					AltConf	Trace
36	d	211	Total	C	N	O	S	0	0
			1741	1123	299	309	10		

- Molecule 37 is a protein called 39S ribosomal protein L46, mitochondrial.

Mol	Chain	Residues	Atoms					AltConf	Trace
37	e	217	Total	C	N	O	S	0	0
			1762	1124	310	323	5		

- Molecule 38 is a protein called 39S ribosomal protein L48, mitochondrial.

Mol	Chain	Residues	Atoms					AltConf	Trace
38	f	116	Total	C	N	O	S	0	0
			915	585	152	175	3		

- Molecule 39 is a protein called 39S ribosomal protein L49, mitochondrial.

Mol	Chain	Residues	Atoms					AltConf	Trace
39	g	129	Total	C	N	O	S	0	0
			1067	690	185	190	2		

- Molecule 40 is a protein called 39S ribosomal protein L50, mitochondrial.

Mol	Chain	Residues	Atoms					AltConf	Trace
40	h	100	Total	C	N	O	S	0	0
			827	524	146	155	2		

- Molecule 41 is a protein called 39S ribosomal protein L51, mitochondrial.

Mol	Chain	Residues	Atoms					AltConf	Trace
41	i	97	Total	C	N	O	S	0	0
			827	532	165	126	4		

- Molecule 42 is a protein called 39S ribosomal protein L52, mitochondrial.



Mol	Chain	Residues	Atoms					AltConf	Trace
			Total	C	N	O	S		
42	j	85	684	423	133	126	2	0	0

- Molecule 43 is a protein called 39S ribosomal protein L53, mitochondrial.

Mol	Chain	Residues	Atoms					AltConf	Trace
			Total	C	N	O	S		
43	k	80	627	392	116	114	5	0	0

- Molecule 44 is a protein called 39S ribosomal protein L54, mitochondrial.

Mol	Chain	Residues	Atoms				AltConf	Trace
			Total	C	N	O		
44	l	23	221	137	52	32	0	0

- Molecule 45 is a protein called 39S ribosomal protein L55, mitochondrial.

Mol	Chain	Residues	Atoms					AltConf	Trace
			Total	C	N	O	S		
45	m	45	372	232	76	62	2	0	0

- Molecule 46 is a protein called Ribosomal protein 63, mitochondrial.

Mol	Chain	Residues	Atoms					AltConf	Trace
			Total	C	N	O	S		
46	o	93	786	495	161	127	3	0	0

- Molecule 47 is a protein called Peptidyl-tRNA hydrolase ICT1, mitochondrial.

Mol	Chain	Residues	Atoms					AltConf	Trace
			Total	C	N	O	S		
47	p	127	1058	661	201	192	4	0	0

- Molecule 48 is a protein called Growth arrest and DNA damage-inducible proteins-interacting protein 1.

Mol	Chain	Residues	Atoms					AltConf	Trace
			Total	C	N	O	S		
48	q	164	1379	858	267	249	5	0	0

- Molecule 49 is a protein called 39S ribosomal protein S18a, mitochondrial.

Mol	Chain	Residues	Atoms					AltConf	Trace
49	r	146	Total	C	N	O	S	0	0
			1203	764	232	199	8		

- Molecule 50 is a protein called 39S ribosomal protein S30, mitochondrial.

Mol	Chain	Residues	Atoms					AltConf	Trace
50	s	370	Total	C	N	O	S	0	0
			3036	1946	542	534	14		

- Molecule 51 is a protein called Mitochondrial assembly of ribosomal large subunit protein 1.

Mol	Chain	Residues	Atoms					AltConf	Trace
51	u	111	Total	C	N	O	S	0	0
			927	595	155	167	10		

- Molecule 52 is a protein called MIEF1 upstream open reading frame protein.

Mol	Chain	Residues	Atoms				AltConf	Trace
52	v	69	Total	C	N	O	0	0
			588	372	116	100		

- Molecule 53 is a protein called Acyl carrier protein, mitochondrial.

Mol	Chain	Residues	Atoms					AltConf	Trace
53	w	79	Total	C	N	O	S	0	0
			638	410	95	128	5		

- Molecule 54 is a RNA chain called 16S rRNA.

Mol	Chain	Residues	Atoms					AltConf	Trace
54	A	1472	Total	C	N	O	P	0	0
			31265	14027	5646	10120	1472		

There is a discrepancy between the modelled and reference sequences:

Chain	Residue	Modelled	Actual	Comment	Reference
A	1437	U	UNK	conflict	GB 1025814679

- Molecule 55 is a RNA chain called mitochondrial Val tRNA.

Mol	Chain	Residues	Atoms					AltConf	Trace
			Total	C	N	O	P		
55	B	56	1191	534	214	387	56	0	0

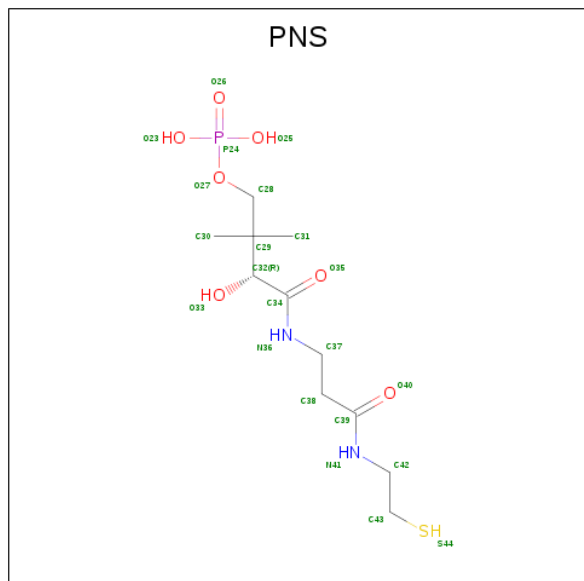
- Molecule 56 is ZINC ION (three-letter code: ZN) (formula: Zn).

Mol	Chain	Residues	Atoms		AltConf
56	0	1	Total	Zn	0
			1	1	
56	r	1	Total	Zn	0
			1	1	

- Molecule 57 is MAGNESIUM ION (three-letter code: MG) (formula: Mg).

Mol	Chain	Residues	Atoms		AltConf
57	g	1	Total	Mg	0
			1	1	
57	A	1	Total	Mg	0
			1	1	

- Molecule 58 is 4'-PHOSPHOPANTETHEINE (three-letter code: PNS) (formula: C<sub>11</sub>H<sub>23</sub>N<sub>2</sub>O<sub>7</sub>PS).



Mol	Chain	Residues	Atoms						AltConf
			Total	C	N	O	P	S	
58	v	1	21	11	2	6	1	1	0

MolProbity failed to run properly - this section is therefore empty.

### 3 Experimental information

Property	Value	Source
EM reconstruction method	SINGLE PARTICLE	Depositor
Imposed symmetry	POINT, Not provided	
Number of particles used	28807	Depositor
Resolution determination method	FSC 0.143 CUT-OFF	Depositor
CTF correction method	NONE	Depositor
Microscope	FEI TITAN KRIOS	Depositor
Voltage (kV)	300	Depositor
Electron dose ( $e^-/\text{\AA}^2$ )	28	Depositor
Minimum defocus (nm)	Not provided	
Maximum defocus (nm)	Not provided	
Magnification	Not provided	
Image detector	FEI FALCON II (4k x 4k)	Depositor
Maximum map value	1.178	Depositor
Minimum map value	-0.747	Depositor
Average map value	0.001	Depositor
Map value standard deviation	0.027	Depositor
Recommended contour level	0.05	Depositor
Map size ( $\text{\AA}$ )	390.24, 390.24, 390.24	wwPDB
Map dimensions	360, 360, 360	wwPDB
Map angles ( $^\circ$ )	90.0, 90.0, 90.0	wwPDB
Pixel spacing ( $\text{\AA}$ )	1.084, 1.084, 1.084	Depositor

## 4 Model quality [i](#)

### 4.1 Standard geometry [i](#)

MolProbity failed to run properly - this section is therefore empty.

### 4.2 Too-close contacts [i](#)

MolProbity failed to run properly - this section is therefore empty.

### 4.3 Torsion angles [i](#)

#### 4.3.1 Protein backbone [i](#)

MolProbity failed to run properly - this section is therefore empty.

#### 4.3.2 Protein sidechains [i](#)

MolProbity failed to run properly - this section is therefore empty.

#### 4.3.3 RNA [i](#)

MolProbity failed to run properly - this section is therefore empty.

### 4.4 Non-standard residues in protein, DNA, RNA chains [i](#)

There are no non-standard protein/DNA/RNA residues in this entry.

### 4.5 Carbohydrates [i](#)

There are no monosaccharides in this entry.

### 4.6 Ligand geometry [i](#)

Of 5 ligands modelled in this entry, 4 are monoatomic - leaving 1 for Mogul analysis.

In the following table, the Counts columns list the number of bonds (or angles) for which Mogul statistics could be retrieved, the number of bonds (or angles) that are observed in the model and the number of bonds (or angles) that are defined in the Chemical Component Dictionary. The Link column lists molecule types, if any, to which the group is linked. The Z score for a bond

length (or angle) is the number of standard deviations the observed value is removed from the expected value. A bond length (or angle) with  $|Z| > 2$  is considered an outlier worth inspection. RMSZ is the root-mean-square of all Z scores of the bond lengths (or angles).

Mol	Type	Chain	Res	Link	Bond lengths			Bond angles		
					Counts	RMSZ	# Z  > 2	Counts	RMSZ	# Z  > 2
58	PNS	v	101	-	13,20,21	2.40	4 (30%)	18,26,29	1.13	1 (5%)

In the following table, the Chirals column lists the number of chiral outliers, the number of chiral centers analysed, the number of these observed in the model and the number defined in the Chemical Component Dictionary. Similar counts are reported in the Torsion and Rings columns. '-' means no outliers of that kind were identified.

Mol	Type	Chain	Res	Link	Chirals	Torsions	Rings
58	PNS	v	101	-	-	11/24/26/27	-

All (4) bond length outliers are listed below:

Mol	Chain	Res	Type	Atoms	Z	Observed(Å)	Ideal(Å)
58	v	101	PNS	C34-N36	5.57	1.45	1.33
58	v	101	PNS	C39-N41	5.37	1.45	1.33
58	v	101	PNS	O35-C34	-2.21	1.19	1.23
58	v	101	PNS	O40-C39	-2.07	1.19	1.23

All (1) bond angle outliers are listed below:

Mol	Chain	Res	Type	Atoms	Z	Observed(°)	Ideal(°)
58	v	101	PNS	C37-C38-C39	-2.23	108.65	112.36

There are no chirality outliers.

All (11) torsion outliers are listed below:

Mol	Chain	Res	Type	Atoms
58	v	101	PNS	C28-C29-C32-O33
58	v	101	PNS	C31-C29-C32-O33
58	v	101	PNS	N41-C42-C43-S44
58	v	101	PNS	C30-C29-C32-O33
58	v	101	PNS	N36-C37-C38-C39
58	v	101	PNS	C31-C29-C32-C34
58	v	101	PNS	C28-C29-C32-C34
58	v	101	PNS	O27-C28-C29-C30
58	v	101	PNS	O27-C28-C29-C31
58	v	101	PNS	C37-C38-C39-O40

*Continued on next page...*

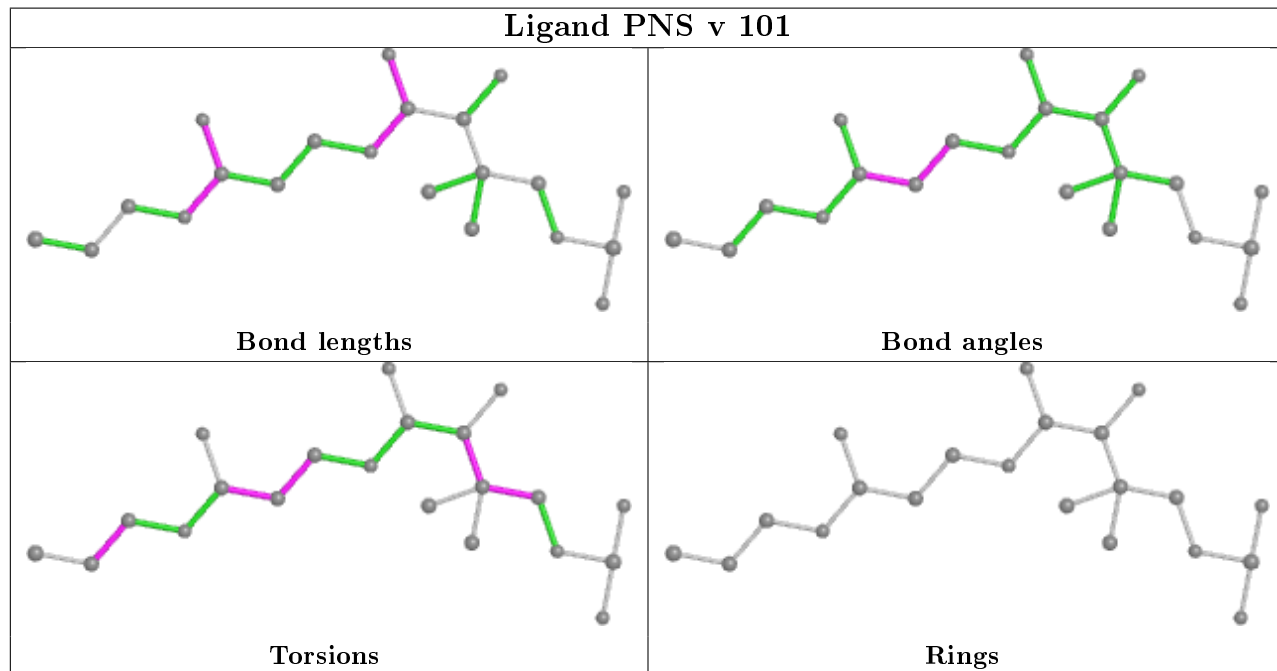
Continued from previous page...

Mol	Chain	Res	Type	Atoms
58	v	101	PNS	C37-C38-C39-N41

There are no ring outliers.

No monomer is involved in short contacts.

The following is a two-dimensional graphical depiction of Mogul quality analysis of bond lengths, bond angles, torsion angles, and ring geometry for all instances of the Ligand of Interest. In addition, ligands with molecular weight > 250 and outliers as shown on the validation Tables will also be included. For torsion angles, if less than 5% of the Mogul distribution of torsion angles is within 10 degrees of the torsion angle in question, then that torsion angle is considered an outlier. Any bond that is central to one or more torsion angles identified as an outlier by Mogul will be highlighted in the graph. For rings, the root-mean-square deviation (RMSD) between the ring in question and similar rings identified by Mogul is calculated over all ring torsion angles. If the average RMSD is greater than 60 degrees and the minimal RMSD between the ring in question and any Mogul-identified rings is also greater than 60 degrees, then that ring is considered an outlier. The outliers are highlighted in purple. The color gray indicates Mogul did not find sufficient equivalents in the CSD to analyse the geometry.



#### 4.7 Other polymers [i](#)

There are no such residues in this entry.

#### 4.8 Polymer linkage issues [i](#)

The following chains have linkage breaks:

Mol	Chain	Number of breaks
41	i	1

All chain breaks are listed below:

Model	Chain	Residue-1	Atom-1	Residue-2	Atom-2	Distance (Å)
1	i	68:LYS	C	69:HIS	N	1.12



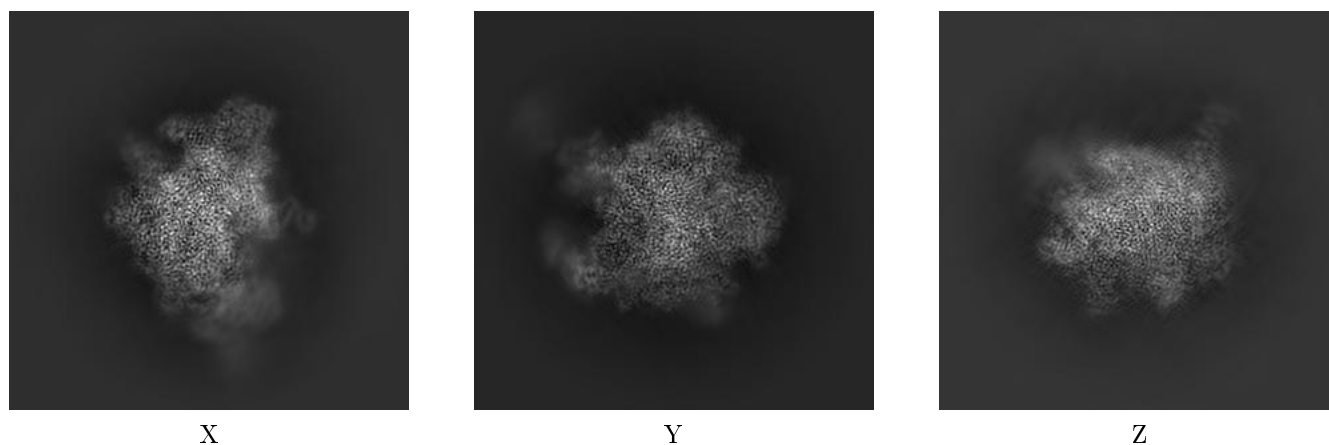
## 5 Map visualisation [i](#)

This section contains visualisations of the EMDB entry EMD-12927. These allow visual inspection of the internal detail of the map and identification of artifacts.

No raw map or half-maps were deposited for this entry and therefore no images, graphs, etc. pertaining to the raw map can be shown.

### 5.1 Orthogonal projections [i](#)

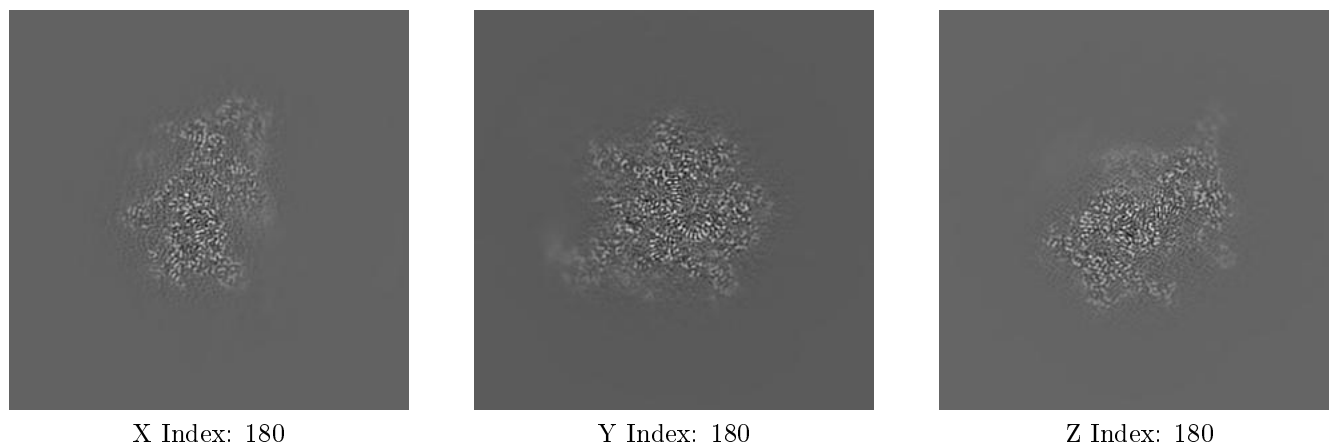
#### 5.1.1 Primary map



The images above show the map projected in three orthogonal directions.

### 5.2 Central slices [i](#)

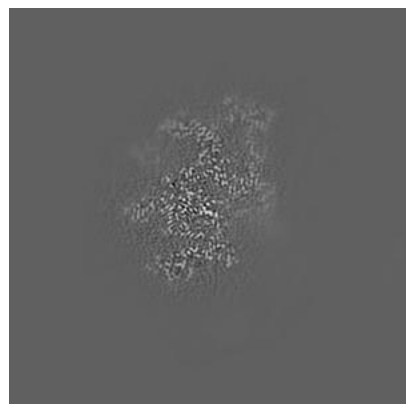
#### 5.2.1 Primary map



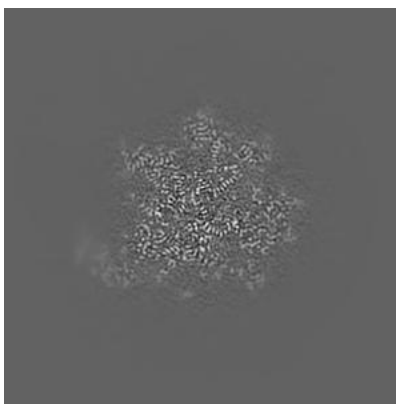
The images above show central slices of the map in three orthogonal directions.

## 5.3 Largest variance slices [i](#)

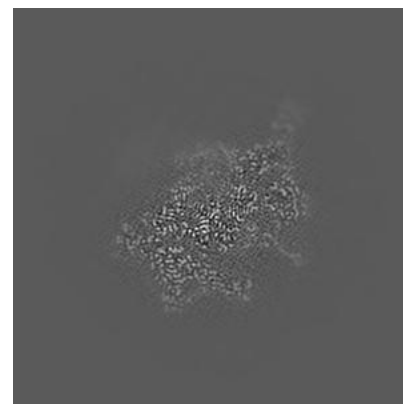
### 5.3.1 Primary map



X Index: 172



Y Index: 174

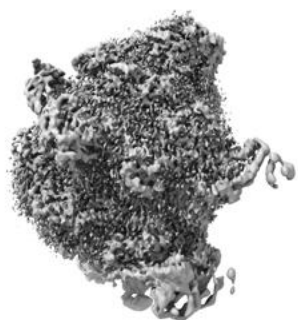


Z Index: 178

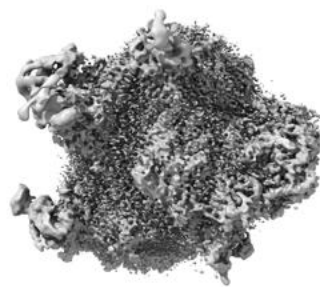
The images above show the largest variance slices of the map in three orthogonal directions.

## 5.4 Orthogonal surface views [i](#)

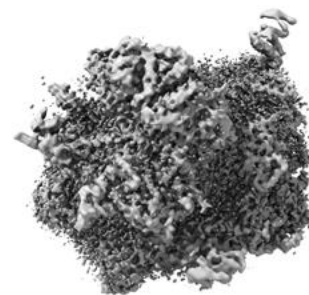
### 5.4.1 Primary map



X



Y



Z

The images above show the 3D surface view of the map at the recommended contour level 0.05. These images, in conjunction with the slice images, may facilitate assessment of whether an appropriate contour level has been provided.

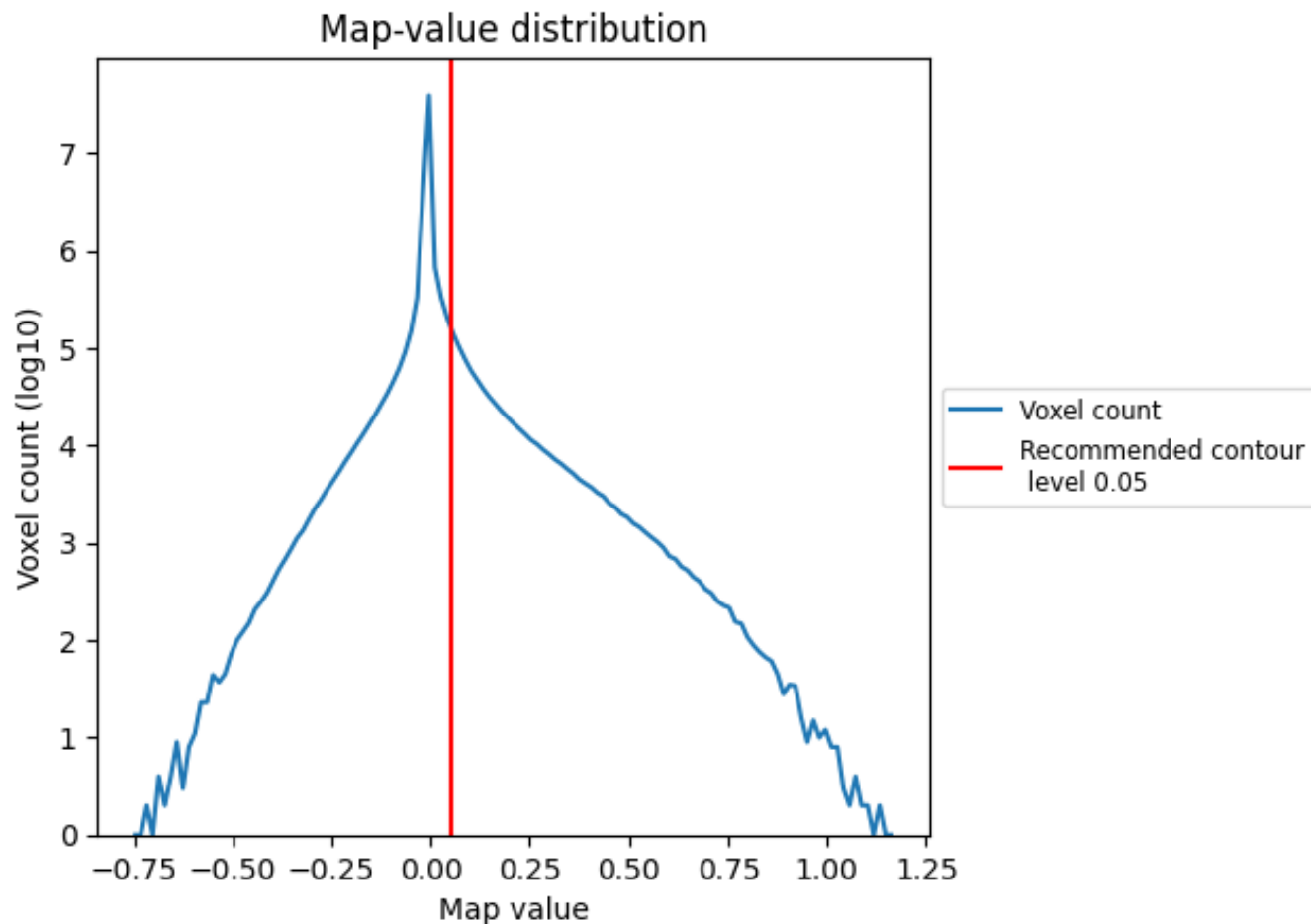
## 5.5 Mask visualisation

This section was not generated. No masks/segmentation were deposited.

## 6 Map analysis [i](#)

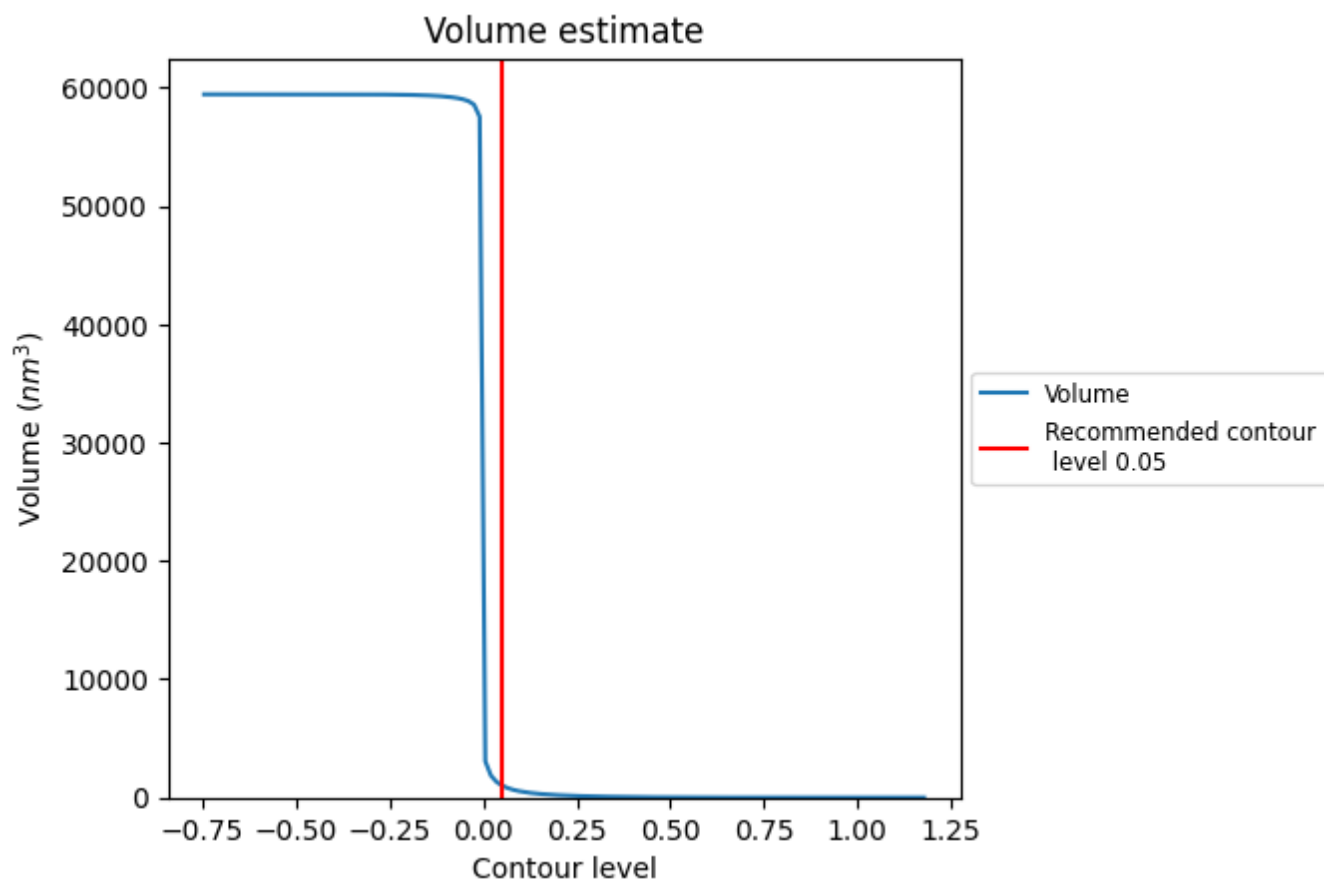
This section contains the results of statistical analysis of the map.

### 6.1 Map-value distribution [i](#)



The map-value distribution is plotted in 128 intervals along the x-axis. The y-axis is logarithmic. A spike in this graph at zero usually indicates that the volume has been masked.

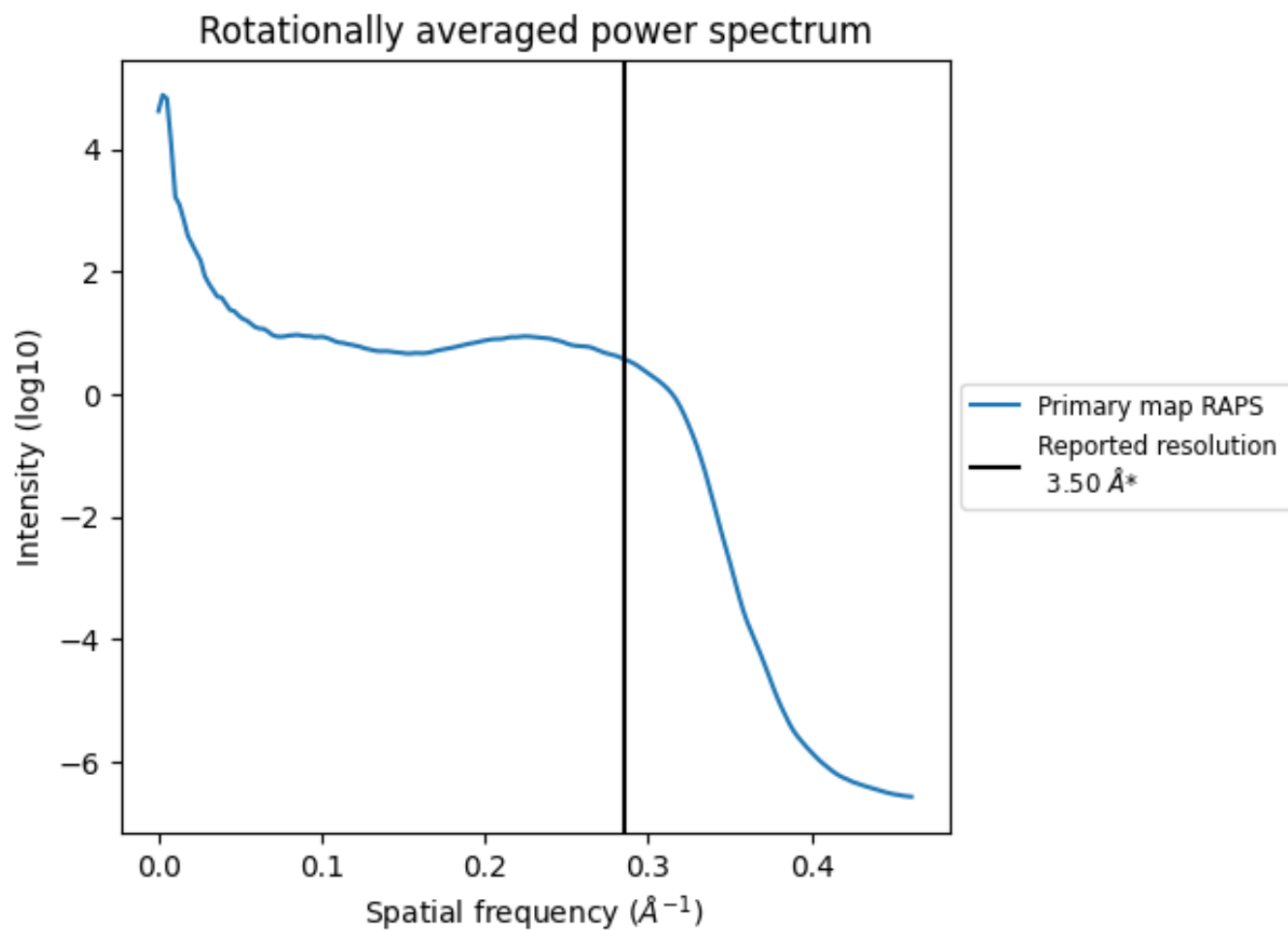
## 6.2 Volume estimate [i](#)



The volume at the recommended contour level is 1014  $\text{nm}^3$ ; this corresponds to an approximate mass of 916 kDa.

The volume estimate graph shows how the enclosed volume varies with the contour level. The recommended contour level is shown as a vertical line and the intersection between the line and the curve gives the volume of the enclosed surface at the given level.

### 6.3 Rotationally averaged power spectrum [i](#)

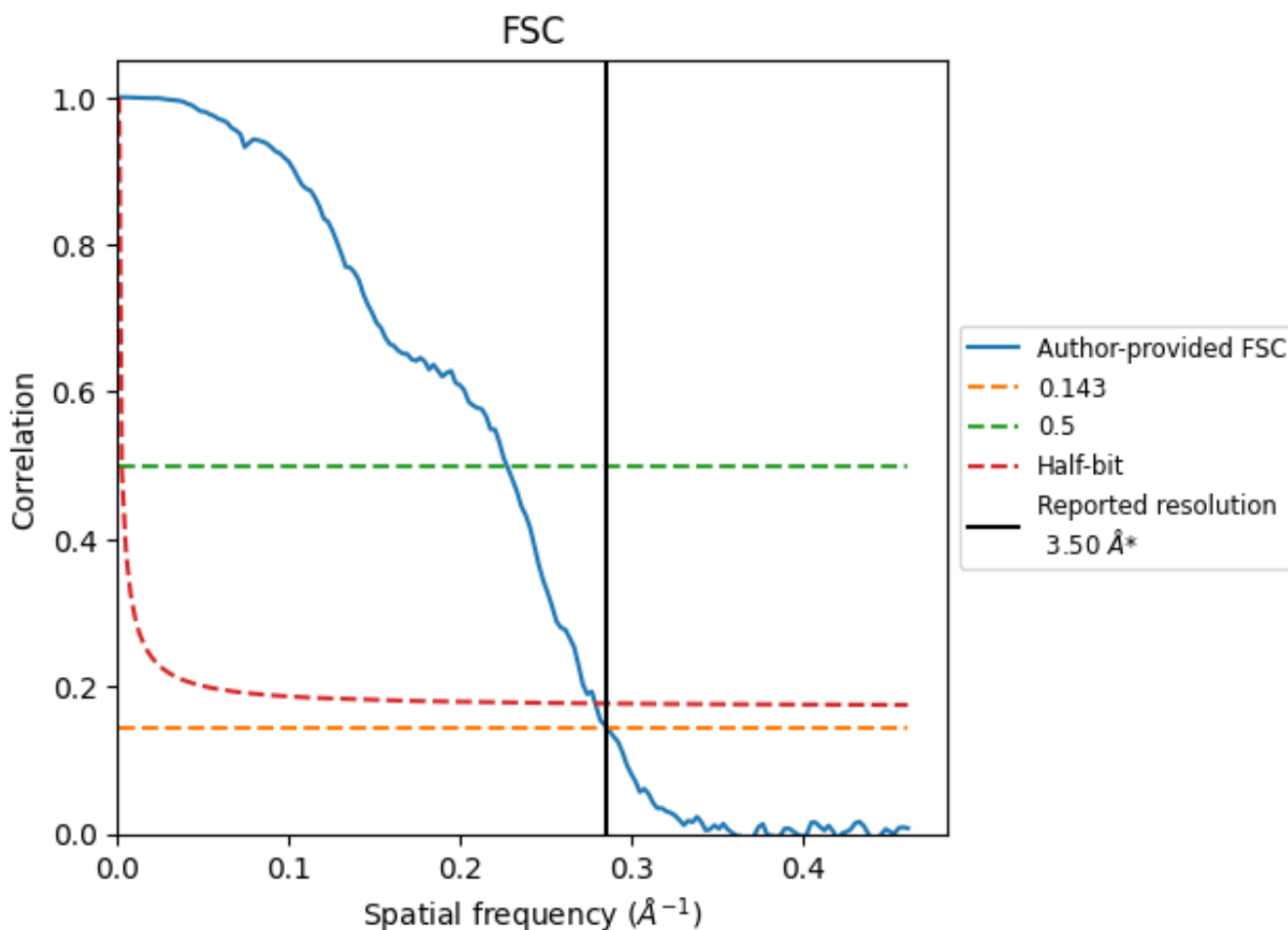


\*Reported resolution corresponds to spatial frequency of 0.286 Å<sup>-1</sup>

## 7 Fourier-Shell correlation [i](#)

Fourier-Shell Correlation (FSC) is the most commonly used method to estimate the resolution of single-particle and subtomogram-averaged maps. The shape of the curve depends on the imposed symmetry, mask and whether or not the two 3D reconstructions used were processed from a common reference. The reported resolution is shown as a black line. A curve is displayed for the half-bit criterion in addition to lines showing the 0.143 gold standard cut-off and 0.5 cut-off.

### 7.1 FSC [i](#)



\*Reported resolution corresponds to spatial frequency of 0.286 Å<sup>-1</sup>

## 7.2 Resolution estimates [i](#)

Resolution estimate (Å)	Estimation criterion (FSC cut-off)		
	0.143	0.5	Half-bit
Reported by author	3.50	-	-
Author-provided FSC curve	3.50	4.40	3.59
Unmasked-calculated*	-	-	-

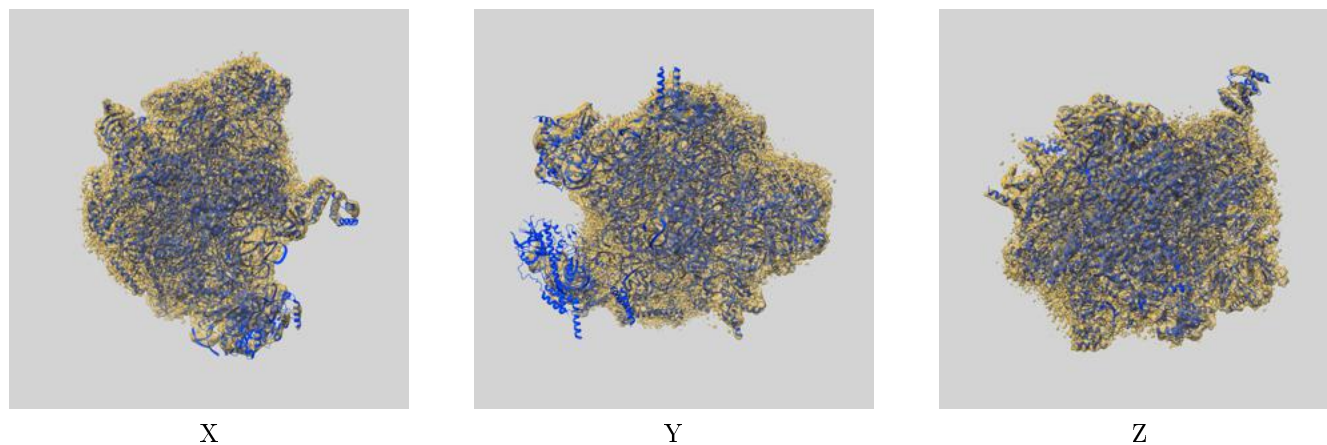
\*Resolution estimate based on FSC curve calculated by comparison of deposited half-maps.



## 8 Map-model fit [i](#)

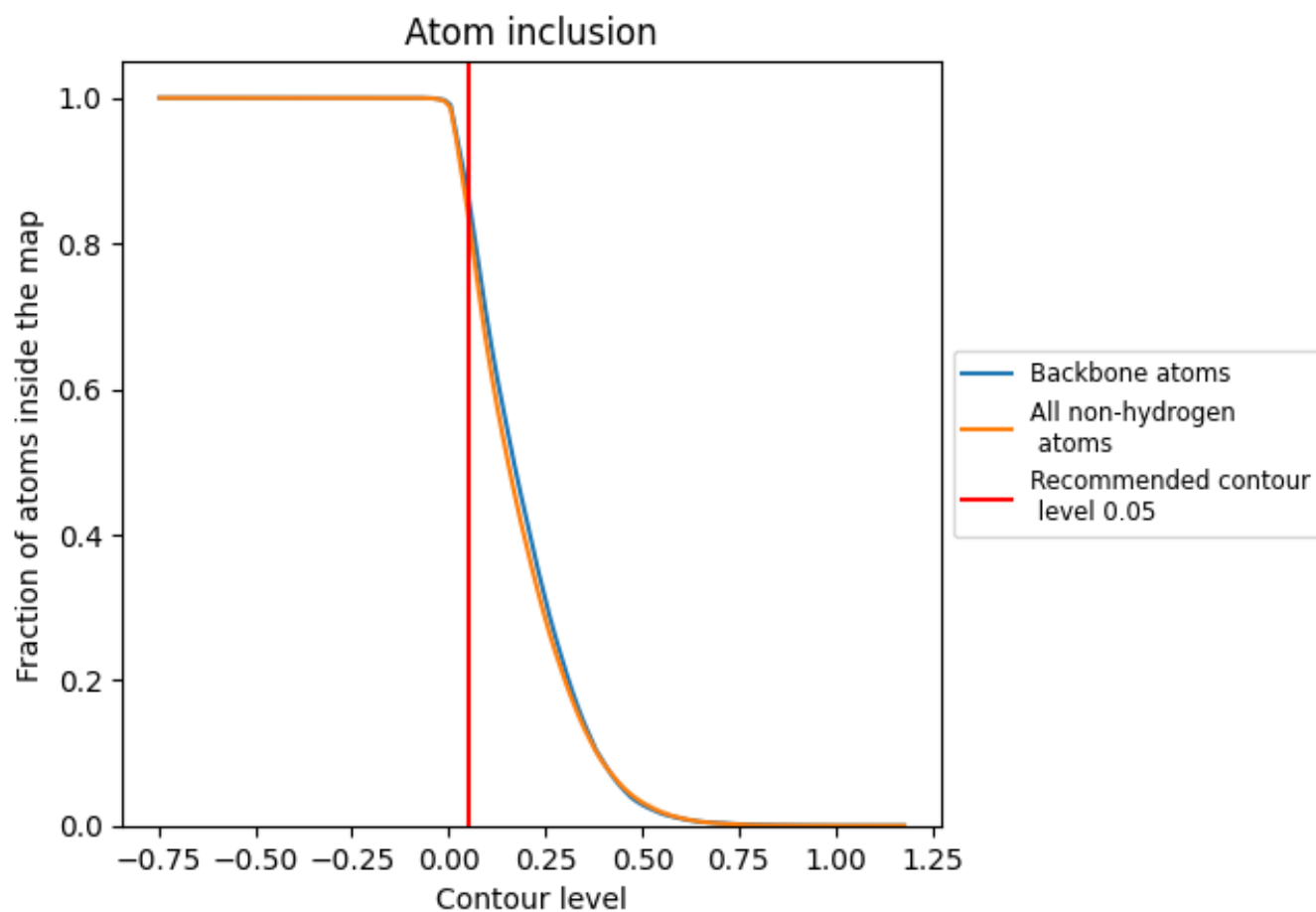
This section contains information regarding the fit between EMDB map EMD-12927 and PDB model 7OIE. Per-residue inclusion information can be found in section ?? on page ??.

### 8.1 Map-model overlay [i](#)



The images above show the 3D surface view of the map at the recommended contour level 0.05 at 50% transparency in yellow overlaid with a ribbon representation of the model coloured in blue. These images allow for the visual assessment of the quality of fit between the atomic model and the map.

## 8.2 Atom inclusion [i](#)



At the recommended contour level, 87% of all backbone atoms, 84% of all non-hydrogen atoms, are inside the map.