



Full wwPDB X-ray Structure Validation Report ⓘ

Jun 5, 2023 – 01:40 pm BST

PDB ID : 8OG5
Title : Crystal structure of human DCAF1 WD40 repeats (Q1250L) in complex with compound 1
Authors : Schroeder, M.; Vulpetti, A.; Renatus, M.
Deposited on : 2023-03-19
Resolution : 2.20 Å (reported)

This is a Full wwPDB X-ray Structure Validation Report for a publicly released PDB entry.

We welcome your comments at validation@mail.wwpdb.org

A user guide is available at

<https://www.wwpdb.org/validation/2017/XrayValidationReportHelp>

with specific help available everywhere you see the ⓘ symbol.

The types of validation reports are described at

<http://www.wwpdb.org/validation/2017/FAQs#types>.

The following versions of software and data (see [references ⓘ](#)) were used in the production of this report:

MolProbity : 4.02b-467
Mogul : 1.8.4, CSD as541be (2020)
Xtriage (Phenix) : 1.13
EDS : 2.33
buster-report : 1.1.7 (2018)
Percentile statistics : 20191225.v01 (using entries in the PDB archive December 25th 2019)
Refmac : 5.8.0158
CCP4 : 7.0.044 (Gargrove)
Ideal geometry (proteins) : Engh & Huber (2001)
Ideal geometry (DNA, RNA) : Parkinson et al. (1996)
Validation Pipeline (wwPDB-VP) : 2.33

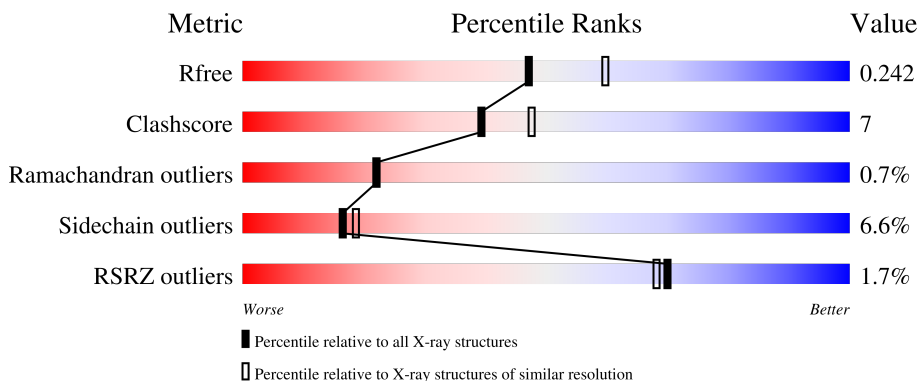
1 Overall quality at a glance

The following experimental techniques were used to determine the structure:

X-RAY DIFFRACTION

The reported resolution of this entry is 2.20 Å.

Percentile scores (ranging between 0-100) for global validation metrics of the entry are shown in the following graphic. The table shows the number of entries on which the scores are based.



Metric	Whole archive (#Entries)	Similar resolution (#Entries, resolution range(Å))
R_{free}	130704	4898 (2.20-2.20)
Clashscore	141614	5594 (2.20-2.20)
Ramachandran outliers	138981	5503 (2.20-2.20)
Sidechain outliers	138945	5504 (2.20-2.20)
RSRZ outliers	127900	4800 (2.20-2.20)

The table below summarises the geometric issues observed across the polymeric chains and their fit to the electron density. The red, orange, yellow and green segments of the lower bar indicate the fraction of residues that contain outliers for ≥ 3 , 2, 1 and 0 types of geometric quality criteria respectively. A grey segment represents the fraction of residues that are not modelled. The numeric value for each fraction is indicated below the corresponding segment, with a dot representing fractions $\leq 5\%$. The upper red bar (where present) indicates the fraction of residues that have poor fit to the electron density. The numeric value is given above the bar.

Mol	Chain	Length	Quality of chain
1	A	367	

2 Entry composition [i](#)

There are 5 unique types of molecules in this entry. The entry contains 4959 atoms, of which 2302 are hydrogens and 0 are deuteriums.

In the tables below, the ZeroOcc column contains the number of atoms modelled with zero occupancy, the AltConf column contains the number of residues with at least one atom in alternate conformation and the Trace column contains the number of residues modelled with at most 2 atoms.

- Molecule 1 is a protein called DDB1- and CUL4-associated factor 1.

Mol	Chain	Residues	Atoms					ZeroOcc	AltConf	Trace	
			Total	C	H	N	O				S
1	A	297	4675	1506	2293	404	455	17	89	4	0

There are 5 discrepancies between the modelled and reference sequences:

Chain	Residue	Modelled	Actual	Comment	Reference
A	1035	GLY	-	expression tag	UNP Q9Y4B6
A	1036	GLY	-	expression tag	UNP Q9Y4B6
A	1037	GLY	-	expression tag	UNP Q9Y4B6
A	1038	ARG	-	expression tag	UNP Q9Y4B6
A	1250	LEU	GLN	engineered mutation	UNP Q9Y4B6

- Molecule 2 is 1,2-ETHANEDIOL (three-letter code: EDO) (formula: C₂H₆O₂).



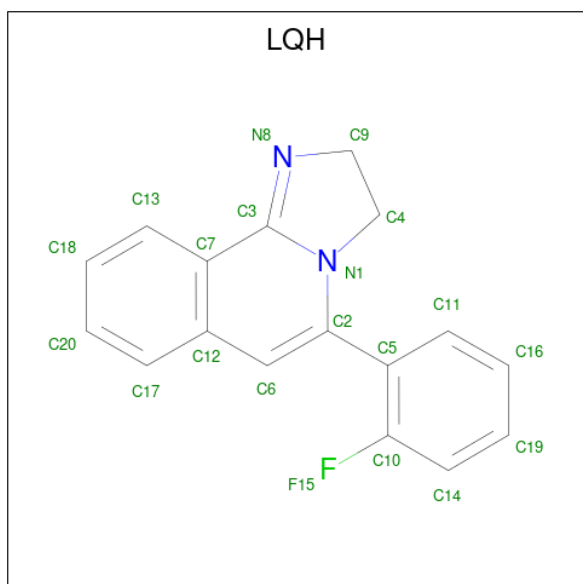
Mol	Chain	Residues	Atoms			ZeroOcc	AltConf	
			Total	C	H			O
2	A	1	10	2	6	2	1	0

- Molecule 3 is ACETATE ION (three-letter code: ACT) (formula: C₂H₃O₂).



Mol	Chain	Residues	Atoms				ZeroOcc	AltConf
			Total	C	H	O		
3	A	1	7	2	3	2	0	0

- Molecule 4 is 5-(2-fluorophenyl)-2,3-dihydroimidazo[2,1-a]isoquinoline (three-letter code: LQH) (formula: C₁₇H₁₃FN₂) (labeled as "Ligand of Interest" by depositor).



Mol	Chain	Residues	Atoms				ZeroOcc	AltConf
			Total	C	F	N		
4	A	1	20	17	1	2	0	0

Continued on next page...

Continued from previous page...

Mol	Chain	Residues	Atoms				ZeroOcc	AltConf
4	A	1	Total	C	F	N	0	0
			20	17	1	2		
4	A	1	Total	C	F	N	0	0
			20	17	1	2		

- Molecule 5 is water.

Mol	Chain	Residues	Atoms		ZeroOcc	AltConf
5	A	207	Total	O	0	0
			207	207		

4 Data and refinement statistics

Property	Value	Source
Space group	P 61 2 2	Depositor
Cell constants a, b, c, α , β , γ	81.92Å 81.92Å 236.78Å 90.00° 90.00° 120.00°	Depositor
Resolution (Å)	52.82 – 2.20 52.76 – 2.20	Depositor EDS
% Data completeness (in resolution range)	100.0 (52.82-2.20) 100.0 (52.76-2.20)	Depositor EDS
R_{merge}	(Not available)	Depositor
R_{sym}	(Not available)	Depositor
$\langle I/\sigma(I) \rangle$ ¹	1.78 (at 2.20Å)	Xtrriage
Refinement program	REFMAC 5.8.0267	Depositor
R, R_{free}	0.197 , 0.235 0.202 , 0.242	Depositor DCC
R_{free} test set	1170 reflections (4.71%)	wwPDB-VP
Wilson B-factor (Å ²)	45.5	Xtrriage
Anisotropy	0.206	Xtrriage
Bulk solvent k_{sol} (e/Å ³), B_{sol} (Å ²)	0.36 , 43.2	EDS
L-test for twinning ²	$\langle L \rangle = 0.48$, $\langle L^2 \rangle = 0.31$	Xtrriage
Estimated twinning fraction	No twinning to report.	Xtrriage
F_o, F_c correlation	0.96	EDS
Total number of atoms	4959	wwPDB-VP
Average B, all atoms (Å ²)	52.0	wwPDB-VP

Xtrriage's analysis on translational NCS is as follows: *The largest off-origin peak in the Patterson function is 5.40% of the height of the origin peak. No significant pseudotranslation is detected.*

¹Intensities estimated from amplitudes.

²Theoretical values of $\langle |L| \rangle$, $\langle L^2 \rangle$ for acentric reflections are 0.5, 0.333 respectively for untwinned datasets, and 0.375, 0.2 for perfectly twinned datasets.

5 Model quality i

5.1 Standard geometry i

Bond lengths and bond angles in the following residue types are not validated in this section: ACT, EDO, LQH

The Z score for a bond length (or angle) is the number of standard deviations the observed value is removed from the expected value. A bond length (or angle) with $|Z| > 5$ is considered an outlier worth inspection. RMSZ is the root-mean-square of all Z scores of the bond lengths (or angles).

Mol	Chain	Bond lengths		Bond angles	
		RMSZ	# Z >5	RMSZ	# Z >5
1	A	1.05	8/2439 (0.3%)	1.03	4/3309 (0.1%)

Chiral center outliers are detected by calculating the chiral volume of a chiral center and verifying if the center is modelled as a planar moiety or with the opposite hand. A planarity outlier is detected by checking planarity of atoms in a peptide group, atoms in a mainchain group or atoms of a sidechain that are expected to be planar.

Mol	Chain	#Chirality outliers	#Planarity outliers
1	A	0	1

All (8) bond length outliers are listed below:

Mol	Chain	Res	Type	Atoms	Z	Observed(Å)	Ideal(Å)
1	A	1087[A]	ARG	C-O	10.59	1.43	1.23
1	A	1087[B]	ARG	C-O	10.59	1.43	1.23
1	A	1247	ARG	C-O	8.59	1.39	1.23
1	A	1105[A]	GLU	CD-OE1	5.96	1.32	1.25
1	A	1105[B]	GLU	CD-OE1	5.96	1.32	1.25
1	A	1184	PHE	C-O	5.81	1.34	1.23
1	A	1382	THR	C-O	5.24	1.33	1.23
1	A	1346	ALA	C-O	5.13	1.33	1.23

All (4) bond angle outliers are listed below:

Mol	Chain	Res	Type	Atoms	Z	Observed(°)	Ideal(°)
1	A	1334	PHE	CB-CA-C	6.16	122.71	110.40
1	A	1087[A]	ARG	CB-CA-C	5.70	121.80	110.40
1	A	1087[B]	ARG	CB-CA-C	5.70	121.80	110.40
1	A	1385	ARG	CB-CA-C	5.53	121.45	110.40

There are no chirality outliers.

All (1) planarity outliers are listed below:

Mol	Chain	Res	Type	Group
1	A	1373	GLY	Peptide

5.2 Too-close contacts [i](#)

In the following table, the Non-H and H(model) columns list the number of non-hydrogen atoms and hydrogen atoms in the chain respectively. The H(added) column lists the number of hydrogen atoms added and optimized by MolProbity. The Clashes column lists the number of clashes within the asymmetric unit, whereas Symm-Clashes lists symmetry-related clashes.

Mol	Chain	Non-H	H(model)	H(added)	Clashes	Symm-Clashes
1	A	2382	2293	2269	33	0
2	A	4	6	6	0	0
3	A	4	3	3	0	0
4	A	60	0	0	5	0
5	A	207	0	0	7	1
All	All	2657	2302	2278	35	1

The all-atom clashscore is defined as the number of clashes found per 1000 atoms (including hydrogen atoms). The all-atom clashscore for this structure is 7.

All (35) close contacts within the same asymmetric unit are listed below, sorted by their clash magnitude.

Atom-1	Atom-2	Interatomic distance (Å)	Clash overlap (Å)
4:A:1505:LQH:C4	4:A:1505:LQH:F15	2.09	0.91
1:A:1283:ARG:O	4:A:1505:LQH:F15	1.87	0.81
1:A:1156:TRP:O	1:A:1156:TRP:CE3	2.39	0.76
1:A:1140:HIS:ND1	5:A:1601:HOH:O	2.18	0.75
1:A:1180:HIS:HD2	5:A:1773:HOH:O	1.72	0.72
1:A:1245:ASP:HB2	1:A:1252:ILE:HD11	1.79	0.65
4:A:1505:LQH:C4	4:A:1505:LQH:C10	2.77	0.62
1:A:1093:GLU:OE1	1:A:1379:ASN:HB2	2.02	0.60
1:A:1105[A]:GLU:O	1:A:1106:ARG:HB2	2.04	0.58
1:A:1371:ASN:ND2	1:A:1373:GLY:O	2.36	0.57
1:A:1201:HIS:CD2	1:A:1210:LYS:HE2	2.40	0.56
1:A:1105[A]:GLU:OE2	1:A:1106:ARG:N	2.35	0.53
1:A:1225:ARG:HG2	1:A:1316:ASP:OD1	2.09	0.53
1:A:1117:LEU:HD21	1:A:1141:LEU:HD12	1.92	0.52
1:A:1201:HIS:CG	1:A:1210:LYS:HE2	2.47	0.49

Continued on next page...

Continued from previous page...

Atom-1	Atom-2	Interatomic distance (Å)	Clash overlap (Å)
1:A:1279:ILE:HG13	1:A:1289:HIS:HB2	1.94	0.49
1:A:1340:THR:HG23	5:A:1689:HOH:O	2.13	0.49
1:A:1316:ASP:OD1	4:A:1503:LQH:C16	2.62	0.47
1:A:1314:GLN:HG3	1:A:1355:PHE:CE1	2.49	0.47
1:A:1156:TRP:O	1:A:1156:TRP:CD2	2.68	0.47
1:A:1283:ARG:HG3	4:A:1505:LQH:C9	2.45	0.47
1:A:1363:ASP:HA	5:A:1629:HOH:O	2.14	0.47
1:A:1389:VAL:HG23	1:A:1390:GLY:N	2.29	0.47
1:A:1105[A]:GLU:OE2	1:A:1105[A]:GLU:HA	2.16	0.46
1:A:1167:LYS:O	1:A:1168:SER:HB2	2.17	0.45
1:A:1298:ARG:HG3	1:A:1313:LEU:HD22	1.98	0.45
1:A:1370:GLU:O	1:A:1382:THR:HA	2.16	0.44
1:A:1180:HIS:CD2	5:A:1773:HOH:O	2.56	0.43
1:A:1116:GLN:NE2	5:A:1615:HOH:O	2.52	0.42
1:A:1389:VAL:CG2	1:A:1390:GLY:N	2.83	0.42
1:A:1231:ASN:HB2	1:A:1232:PRO:CD	2.49	0.42
1:A:1156:TRP:O	1:A:1156:TRP:HE3	2.00	0.42
1:A:1095:GLY:O	1:A:1112:THR:HA	2.20	0.41
1:A:1238:LEU:HG	5:A:1642:HOH:O	2.21	0.41
1:A:1332:SER:HB2	1:A:1352:ARG:H	1.85	0.41

All (1) symmetry-related close contacts are listed below. The label for Atom-2 includes the symmetry operator and encoded unit-cell translations to be applied.

Atom-1	Atom-2	Interatomic distance (Å)	Clash overlap (Å)
5:A:1748:HOH:O	5:A:1778:HOH:O[8_545]	2.09	0.11

5.3 Torsion angles [i](#)

5.3.1 Protein backbone [i](#)

In the following table, the Percentiles column shows the percent Ramachandran outliers of the chain as a percentile score with respect to all X-ray entries followed by that with respect to entries of similar resolution.

The Analysed column shows the number of residues for which the backbone conformation was analysed, and the total number of residues.

Mol	Chain	Analysed	Favoured	Allowed	Outliers	Percentiles
1	A	297/367 (81%)	285 (96%)	10 (3%)	2 (1%)	22 22

All (2) Ramachandran outliers are listed below:

Mol	Chain	Res	Type
1	A	1106	ARG
1	A	1168	SER

5.3.2 Protein sidechains [i](#)

In the following table, the Percentiles column shows the percent sidechain outliers of the chain as a percentile score with respect to all X-ray entries followed by that with respect to entries of similar resolution.

The Analysed column shows the number of residues for which the sidechain conformation was analysed, and the total number of residues.

Mol	Chain	Analysed	Rotameric	Outliers	Percentiles
1	A	262/321 (82%)	244 (93%)	18 (7%)	15 16

All (18) residues with a non-rotameric sidechain are listed below:

Mol	Chain	Res	Type
1	A	1084	SER
1	A	1092	ASP
1	A	1104	ARG
1	A	1105[A]	GLU
1	A	1105[B]	GLU
1	A	1117	LEU
1	A	1141	LEU
1	A	1225	ARG
1	A	1235	ASP
1	A	1259	ASN
1	A	1273	VAL
1	A	1279	ILE
1	A	1283	ARG
1	A	1300	VAL
1	A	1313	LEU
1	A	1336	THR
1	A	1374	SER
1	A	1375	MET

Sometimes sidechains can be flipped to improve hydrogen bonding and reduce clashes. All (1) such sidechains are listed below:

Mol	Chain	Res	Type
1	A	1158	GLN

5.3.3 RNA [i](#)

There are no RNA molecules in this entry.

5.4 Non-standard residues in protein, DNA, RNA chains [i](#)

There are no non-standard protein/DNA/RNA residues in this entry.

5.5 Carbohydrates [i](#)

There are no monosaccharides in this entry.

5.6 Ligand geometry [i](#)

5 ligands are modelled in this entry.

In the following table, the Counts columns list the number of bonds (or angles) for which Mogul statistics could be retrieved, the number of bonds (or angles) that are observed in the model and the number of bonds (or angles) that are defined in the Chemical Component Dictionary. The Link column lists molecule types, if any, to which the group is linked. The Z score for a bond length (or angle) is the number of standard deviations the observed value is removed from the expected value. A bond length (or angle) with $|Z| > 2$ is considered an outlier worth inspection. RMSZ is the root-mean-square of all Z scores of the bond lengths (or angles).

Mol	Type	Chain	Res	Link	Bond lengths			Bond angles		
					Counts	RMSZ	# $ Z > 2$	Counts	RMSZ	# $ Z > 2$
2	EDO	A	1501	-	3,3,3	0.09	0	2,2,2	0.19	0
4	LQH	A	1503	-	23,23,23	1.90	4 (17%)	29,33,33	1.49	5 (17%)
3	ACT	A	1502	-	3,3,3	0.93	0	3,3,3	0.82	0
4	LQH	A	1505	-	23,23,23	1.90	5 (21%)	29,33,33	1.21	4 (13%)
4	LQH	A	1504	-	23,23,23	2.06	6 (26%)	29,33,33	1.93	7 (24%)

In the following table, the Chirals column lists the number of chiral outliers, the number of chiral centers analysed, the number of these observed in the model and the number defined in the Chemical Component Dictionary. Similar counts are reported in the Torsion and Rings columns. '-' means no outliers of that kind were identified.

Mol	Type	Chain	Res	Link	Chirals	Torsions	Rings
4	LQH	A	1503	-	-	0/4/10/10	0/4/4/4

Continued on next page...

Continued from previous page...

Mol	Type	Chain	Res	Link	Chirals	Torsions	Rings
2	EDO	A	1501	-	-	1/1/1/1	-
4	LQH	A	1505	-	-	3/4/10/10	0/4/4/4
4	LQH	A	1504	-	-	0/4/10/10	0/4/4/4

All (15) bond length outliers are listed below:

Mol	Chain	Res	Type	Atoms	Z	Observed(Å)	Ideal(Å)
4	A	1505	LQH	C12-C6	4.71	1.53	1.43
4	A	1503	LQH	C12-C6	4.61	1.53	1.43
4	A	1504	LQH	C12-C6	4.11	1.52	1.43
4	A	1503	LQH	C7-C3	3.97	1.53	1.45
4	A	1504	LQH	C3-N1	-3.93	1.30	1.38
4	A	1503	LQH	C3-N1	-3.93	1.30	1.38
4	A	1504	LQH	C7-C3	3.87	1.53	1.45
4	A	1504	LQH	C5-C10	3.78	1.44	1.38
4	A	1505	LQH	C3-N1	-3.77	1.31	1.38
4	A	1505	LQH	C7-C3	3.72	1.53	1.45
4	A	1504	LQH	C2-N1	-3.28	1.32	1.40
4	A	1505	LQH	C5-C2	3.10	1.54	1.48
4	A	1505	LQH	C2-N1	-2.87	1.33	1.40
4	A	1504	LQH	C5-C2	2.73	1.53	1.48
4	A	1503	LQH	C2-N1	-2.59	1.34	1.40

All (16) bond angle outliers are listed below:

Mol	Chain	Res	Type	Atoms	Z	Observed(°)	Ideal(°)
4	A	1504	LQH	C9-C4-N1	-6.62	96.86	101.24
4	A	1504	LQH	C5-C2-N1	3.81	123.68	118.56
4	A	1503	LQH	C9-C4-N1	-3.70	98.79	101.24
4	A	1503	LQH	C11-C5-C10	3.50	120.64	116.67
4	A	1504	LQH	C14-C10-C5	-3.25	119.57	123.11
4	A	1504	LQH	C5-C2-C6	-2.81	116.09	123.02
4	A	1503	LQH	C12-C6-C2	-2.66	119.24	122.25
4	A	1505	LQH	C11-C5-C2	2.47	124.49	119.34
4	A	1505	LQH	C7-C3-N8	-2.36	122.16	127.00
4	A	1503	LQH	C14-C10-C5	-2.29	120.61	123.11
4	A	1504	LQH	C7-C12-C6	-2.22	116.47	119.10
4	A	1504	LQH	C11-C5-C10	2.20	119.17	116.67
4	A	1504	LQH	F15-C10-C5	2.19	123.38	119.67
4	A	1505	LQH	C9-C4-N1	-2.15	99.82	101.24
4	A	1503	LQH	C11-C5-C2	-2.06	115.06	119.34
4	A	1505	LQH	C16-C19-C14	-2.00	117.14	120.19

There are no chirality outliers.

All (4) torsion outliers are listed below:

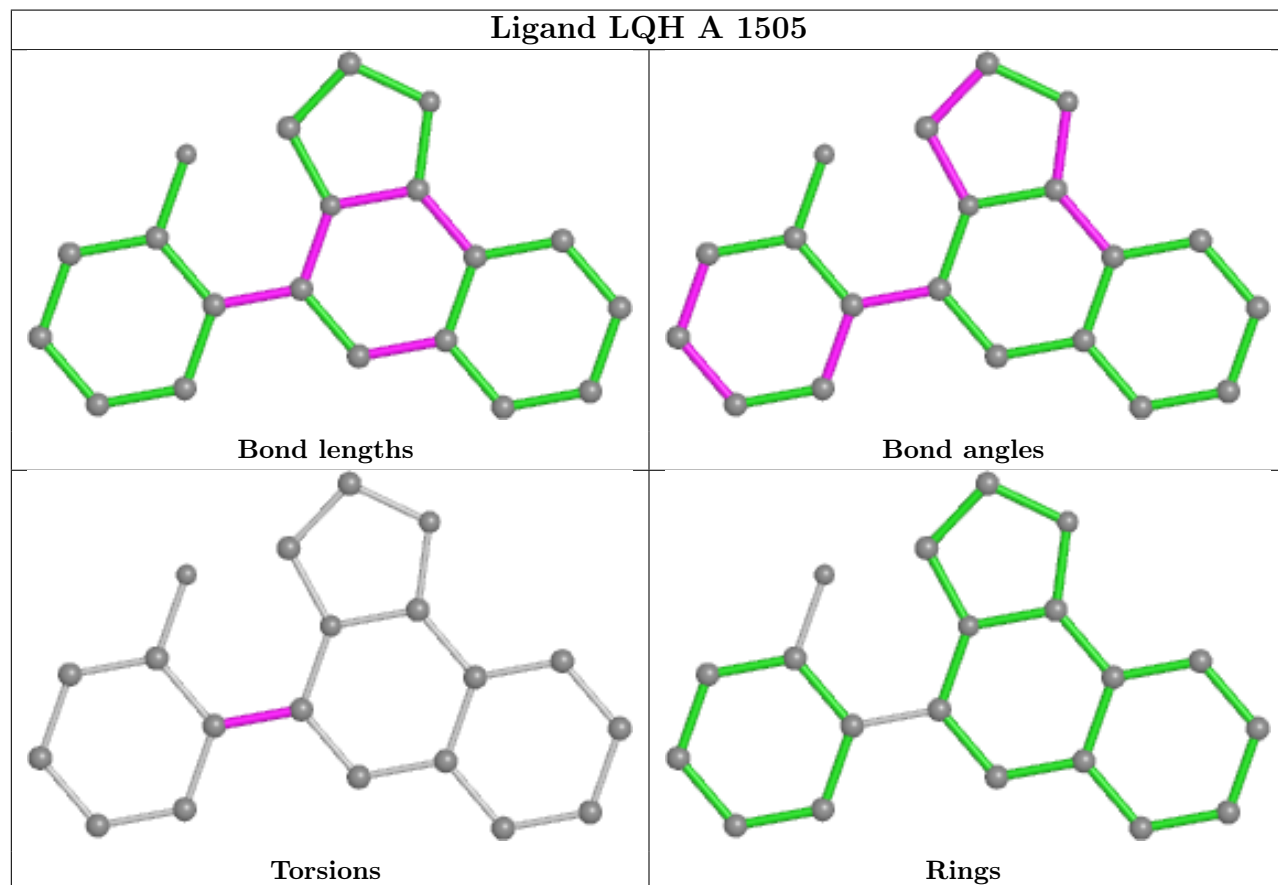
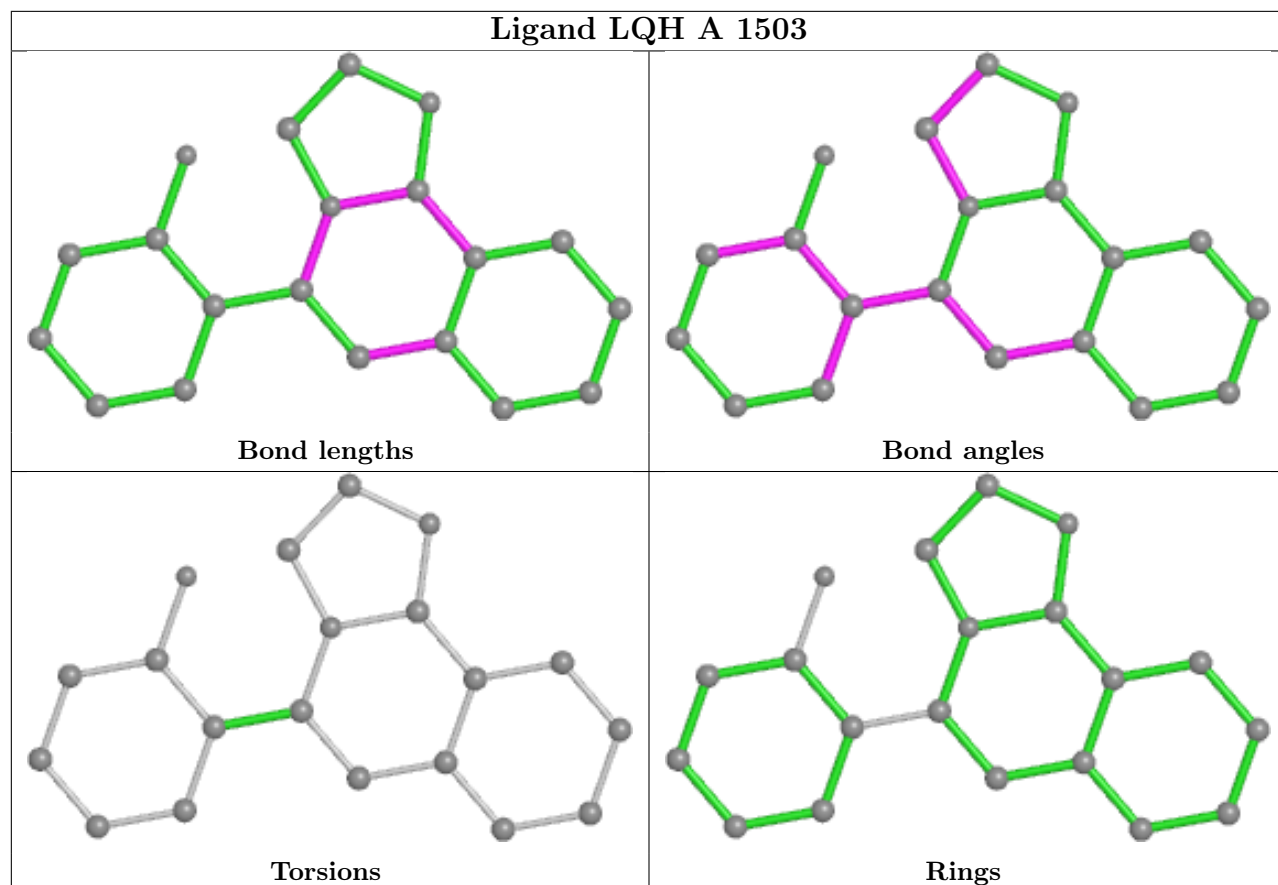
Mol	Chain	Res	Type	Atoms
4	A	1505	LQH	N1-C2-C5-C10
4	A	1505	LQH	C6-C2-C5-C10
2	A	1501	EDO	O1-C1-C2-O2
4	A	1505	LQH	N1-C2-C5-C11

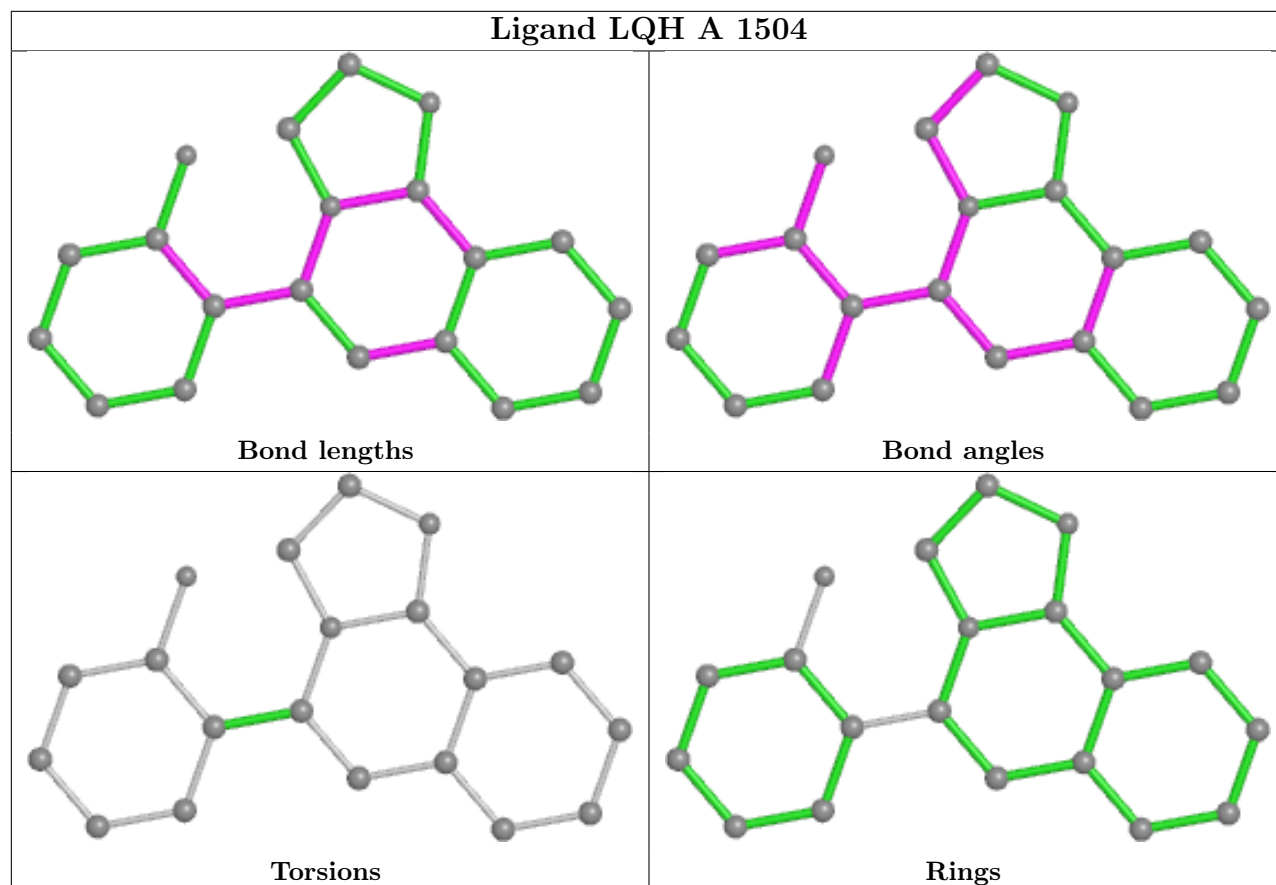
There are no ring outliers.

2 monomers are involved in 5 short contacts:

Mol	Chain	Res	Type	Clashes	Symm-Clashes
4	A	1503	LQH	1	0
4	A	1505	LQH	4	0

The following is a two-dimensional graphical depiction of Mogul quality analysis of bond lengths, bond angles, torsion angles, and ring geometry for all instances of the Ligand of Interest. In addition, ligands with molecular weight > 250 and outliers as shown on the validation Tables will also be included. For torsion angles, if less than 5% of the Mogul distribution of torsion angles is within 10 degrees of the torsion angle in question, then that torsion angle is considered an outlier. Any bond that is central to one or more torsion angles identified as an outlier by Mogul will be highlighted in the graph. For rings, the root-mean-square deviation (RMSD) between the ring in question and similar rings identified by Mogul is calculated over all ring torsion angles. If the average RMSD is greater than 60 degrees and the minimal RMSD between the ring in question and any Mogul-identified rings is also greater than 60 degrees, then that ring is considered an outlier. The outliers are highlighted in purple. The color gray indicates Mogul did not find sufficient equivalents in the CSD to analyse the geometry.





5.7 Other polymers [i](#)

There are no such residues in this entry.

5.8 Polymer linkage issues [i](#)

There are no chain breaks in this entry.

6 Fit of model and data [i](#)

6.1 Protein, DNA and RNA chains [i](#)

In the following table, the column labelled '#RSRZ > 2' contains the number (and percentage) of RSRZ outliers, followed by percent RSRZ outliers for the chain as percentile scores relative to all X-ray entries and entries of similar resolution. The OWAB column contains the minimum, median, 95th percentile and maximum values of the occupancy-weighted average B-factor per residue. The column labelled 'Q < 0.9' lists the number of (and percentage) of residues with an average occupancy less than 0.9.

Mol	Chain	Analysed	<RSRZ>	#RSRZ>2	OWAB(Å ²)	Q<0.9
1	A	297/367 (80%)	-0.18	5 (1%) 70 68	30, 48, 84, 112	1 (0%)

All (5) RSRZ outliers are listed below:

Mol	Chain	Res	Type	RSRZ
1	A	1285	PHE	6.6
1	A	1156	TRP	2.6
1	A	1080	PHE	2.6
1	A	1390	GLY	2.4
1	A	1375	MET	2.0

6.2 Non-standard residues in protein, DNA, RNA chains [i](#)

There are no non-standard protein/DNA/RNA residues in this entry.

6.3 Carbohydrates [i](#)

There are no monosaccharides in this entry.

6.4 Ligands [i](#)

In the following table, the Atoms column lists the number of modelled atoms in the group and the number defined in the chemical component dictionary. The B-factors column lists the minimum, median, 95th percentile and maximum values of B factors of atoms in the group. The column labelled 'Q < 0.9' lists the number of atoms with occupancy less than 0.9.

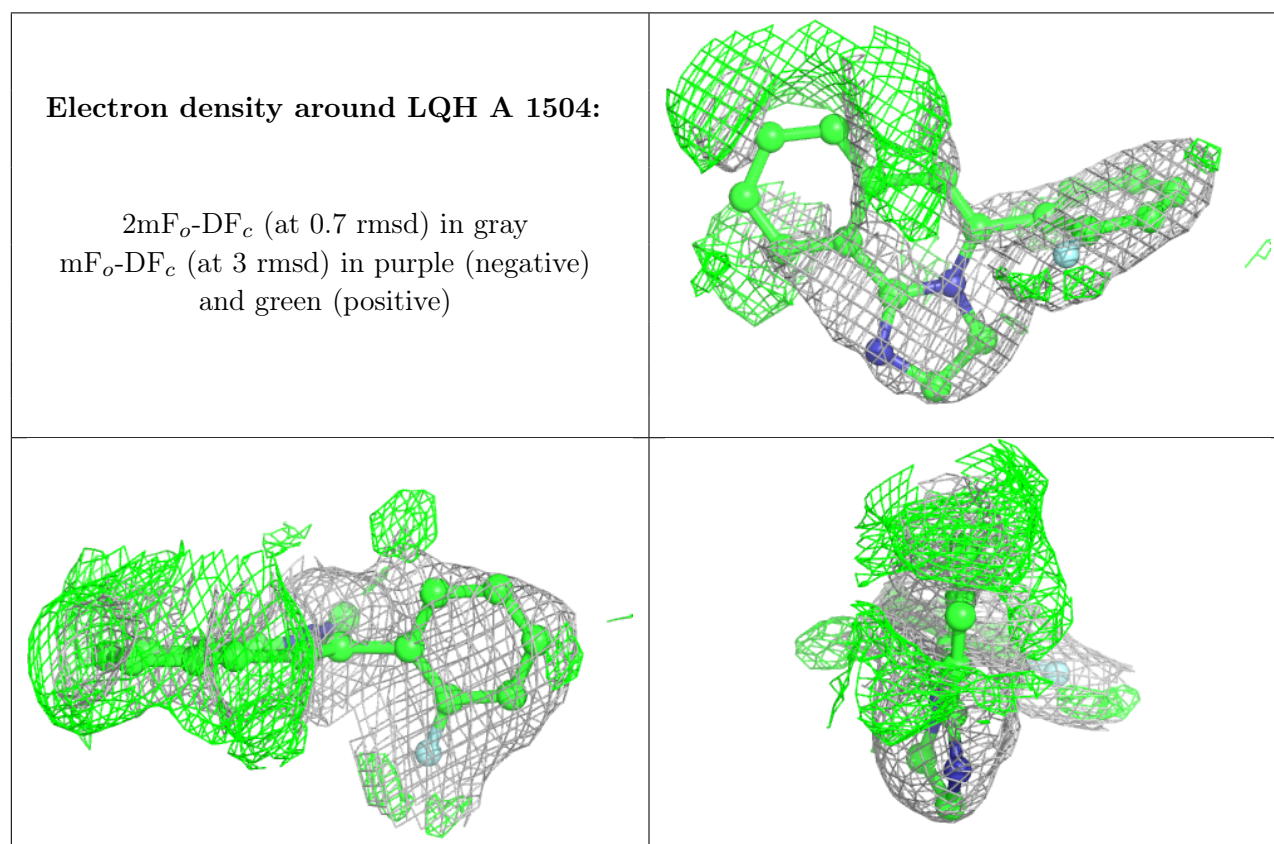
Mol	Type	Chain	Res	Atoms	RSCC	RSR	B-factors(Å ²)	Q<0.9
4	LQH	A	1504	20/20	0.56	0.24	86,116,127,128	0
4	LQH	A	1505	20/20	0.80	0.24	53,58,62,63	20

Continued on next page...

Continued from previous page...

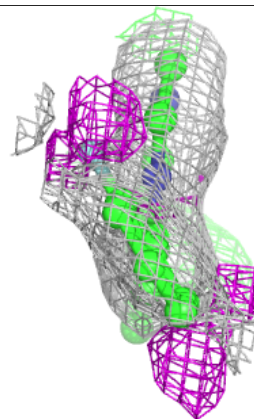
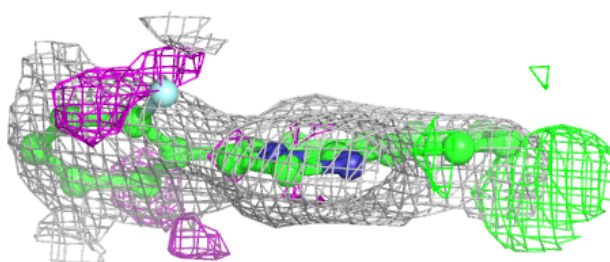
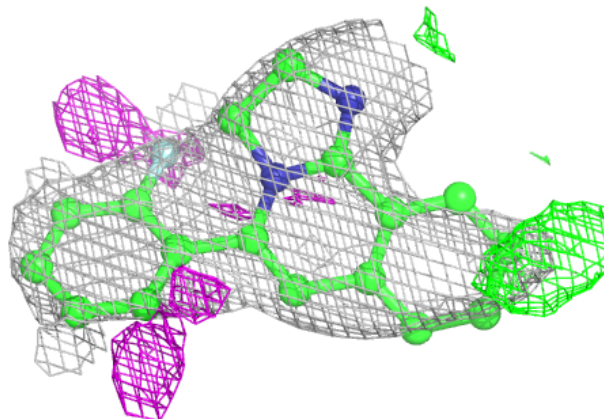
Mol	Type	Chain	Res	Atoms	RSCC	RSR	B-factors(\AA^2)	Q<0.9
2	EDO	A	1501	4/4	0.86	0.15	43,76,80,81	1
4	LQH	A	1503	20/20	0.92	0.14	51,61,78,82	0
3	ACT	A	1502	4/4	0.98	0.11	33,33,33,35	7

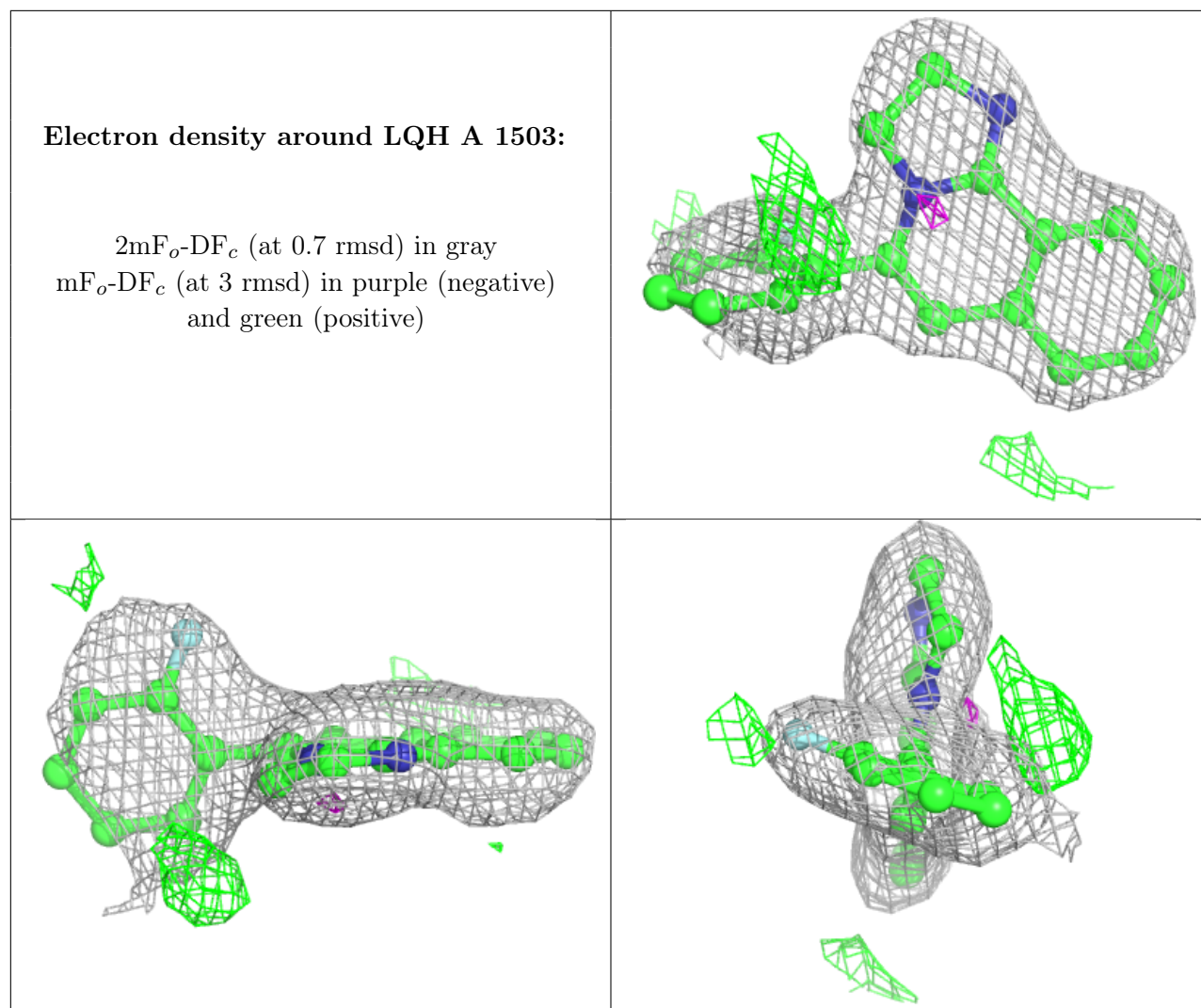
The following is a graphical depiction of the model fit to experimental electron density of all instances of the Ligand of Interest. In addition, ligands with molecular weight > 250 and outliers as shown on the geometry validation Tables will also be included. Each fit is shown from different orientation to approximate a three-dimensional view.



Electron density around LQH A 1505:

$2mF_o-DF_c$ (at 0.7 rmsd) in gray
 mF_o-DF_c (at 3 rmsd) in purple (negative)
and green (positive)





6.5 Other polymers [i](#)

There are no such residues in this entry.