



Full wwPDB NMR Structure Validation Report ⓘ

May 28, 2020 – 08:09 pm BST

PDB ID : 1OCD
Title : CYTOCHROME C (OXIDIZED) FROM EQUUS CABALLUS, NMR, MIN-
IMIZED AVERAGE STRUCTURE
Authors : Qi, P.X.; Beckman, R.A.; Wand, A.J.
Deposited on : 1996-07-03

This is a Full wwPDB NMR Structure Validation Report for a publicly released PDB entry.

We welcome your comments at validation@mail.wwpdb.org

A user guide is available at

<https://www.wwpdb.org/validation/2017/NMRValidationReportHelp>

with specific help available everywhere you see the ⓘ symbol.

The following versions of software and data (see [references ⓘ](#)) were used in the production of this report:

Cyrange : Kirchner and Güntert (2011)
NmrClust : Kelley et al. (1996)
MolProbity : 4.02b-467
Mogul : 1.8.5 (274361), CSD as541be (2020)
buster-report : 1.1.7 (2018)
Percentile statistics : 20191225.v01 (using entries in the PDB archive December 25th 2019)
RCI : v_1n_11_5_13_A (Berjanski et al., 2005)
PANAV : Wang et al. (2010)
ShiftChecker : 2.11
Ideal geometry (proteins) : Engh & Huber (2001)
Ideal geometry (DNA, RNA) : Parkinson et al. (1996)
Validation Pipeline (wwPDB-VP) : 2.11

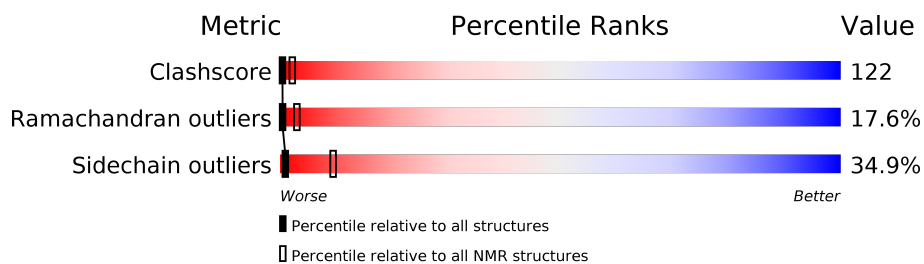
1 Overall quality at a glance

The following experimental techniques were used to determine the structure:

SOLUTION NMR

The overall completeness of chemical shifts assignment was not calculated.

Percentile scores (ranging between 0-100) for global validation metrics of the entry are shown in the following graphic. The table shows the number of entries on which the scores are based.



Metric	Whole archive (#Entries)	NMR archive (#Entries)
Clashscore	158937	12864
Ramachandran outliers	154571	11451
Sidechain outliers	154315	11428

The table below summarises the geometric issues observed across the polymeric chains and their fit to the experimental data. The red, orange, yellow and green segments indicate the fraction of residues that contain outliers for ≥ 3 , 2, 1 and 0 types of geometric quality criteria. A cyan segment indicates the fraction of residues that are not part of the well-defined cores, and a grey segment represents the fraction of residues that are not modelled. The numeric value for each fraction is indicated below the corresponding segment, with a dot representing fractions $\leq 5\%$

Mol	Chain	Length	Quality of chain
1	A	104	

2 Ensemble composition and analysis

This entry contains 1 models. Identification of well-defined residues and clustering analysis are not possible.

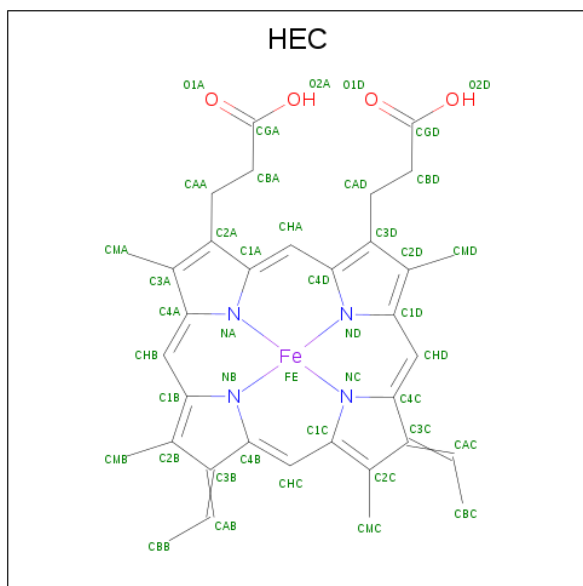
3 Entry composition [i](#)

There are 3 unique types of molecules in this entry. The entry contains 1763 atoms, of which 891 are hydrogens and 0 are deuteriums.

- Molecule 1 is a protein called CYTOCHROME C.

Mol	Chain	Residues	Atoms					Trace	
			Total	C	H	N	O		S
1	A	104	1670	524	847	144	151	4	0

- Molecule 2 is HEME C (three-letter code: HEC) (formula: $C_{34}H_{34}FeN_4O_4$).



Mol	Chain	Residues	Atoms					
			Total	C	Fe	H	N	O
2	A	1	75	34	1	32	4	4

- Molecule 3 is water.

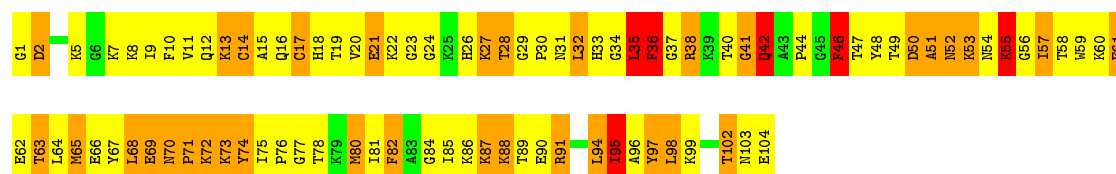
Mol	Chain	Residues	Atoms	
			Total	H O
3	A	6	18	12 6

4 Residue-property plots [i](#)

These plots are provided for all protein, RNA and DNA chains in the entry. The first graphic is the same as shown in the summary in section 1 of this report. The second graphic shows the sequence where residues are colour-coded according to the number of geometric quality criteria for which they contain at least one outlier: green = 0, yellow = 1, orange = 2 and red = 3 or more. Stretches of 2 or more consecutive residues without any outliers are shown as green connectors. Residues which are classified as ill-defined in the NMR ensemble, are shown in cyan with an underline colour-coded according to the previous scheme. Residues which were present in the experimental sample, but not modelled in the final structure are shown in grey.

• Molecule 1: CYTOCHROME C

Chain A: 



5 Refinement protocol and experimental data overview

The models were refined using the following method: *DISTANCE GEOMETRY, SIMULATED ANNEALING*.

Of the 64 calculated structures, 1 were deposited, based on the following criterion: *structures with the least restraint violations*.

The following table shows the software used for structure solution, optimisation and refinement.

Software name	Classification	Version
X-PLOR	refinement	
DSPACE	structure solution	
X-PLOR	structure solution	

No chemical shift data was provided. No validations of the models with respect to experimental NMR restraints is performed at this time.

6 Model quality [i](#)

6.1 Standard geometry [i](#)

Bond lengths and bond angles in the following residue types are not validated in this section: HEC

There are no covalent bond-length or bond-angle outliers.

Chiral center outliers are detected by calculating the chiral volume of a chiral center and verifying if the center is modelled as a planar moiety or with the opposite hand. A planarity outlier is detected by checking planarity of atoms in a peptide group, atoms in a mainchain group or atoms of a sidechain that are expected to be planar.

Mol	Chain	Chirality	Planarity
1	A	0	2
All	All	0	2

There are no bond-length outliers.

There are no bond-angle outliers.

There are no chirality outliers.

All planar outliers are listed below.

Mol	Chain	Res	Type	Group
1	A	91	ARG	Sidechain
1	A	38	ARG	Sidechain

6.2 Too-close contacts [i](#)

In the following table, the Non-H and H(model) columns list the number of non-hydrogen atoms and hydrogen atoms in each chain respectively. The H(added) column lists the number of hydrogen atoms added and optimized by MolProbity. The Clashes column lists the number of clashes averaged over the ensemble.

Mol	Chain	Non-H	H(model)	H(added)	Clashes
1	A	823	847	847	209
2	A	43	32	30	18
3	A	6	12	0	1
All	All	872	891	877	213

The all-atom clashscore is defined as the number of clashes found per 1000 atoms (including hydrogen atoms). The all-atom clashscore for this structure is 122.

All clashes are listed below, sorted by their clash magnitude.

Atom-1	Atom-2	Clash(Å)	Distance(Å)
1:A:40:THR:HG21	1:A:57:ILE:HG12	0.96	1.36
1:A:85:ILE:HD12	2:A:105:HEC:HBB1	0.91	1.39
1:A:20:VAL:HG23	1:A:102:THR:OG1	0.89	1.66
1:A:20:VAL:HG23	1:A:102:THR:CB	0.88	1.97
1:A:40:THR:HG21	1:A:57:ILE:CG1	0.88	1.98
1:A:57:ILE:HD12	3:A:204:HOH:O	0.87	1.68
1:A:10:PHE:CE2	1:A:20:VAL:HG12	0.86	2.06
1:A:36:PHE:CE1	1:A:95:ILE:HG23	0.81	2.11
2:A:105:HEC:O2D	2:A:105:HEC:HMD1	0.79	1.78
1:A:11:VAL:HA	1:A:15:ALA:HB2	0.75	1.57
1:A:32:LEU:HD12	1:A:35:LEU:CD2	0.74	2.13
1:A:67:TYR:CE2	1:A:74:TYR:CE1	0.73	2.77
1:A:85:ILE:HD12	2:A:105:HEC:CBB	0.72	2.12
1:A:49:THR:HG21	1:A:77:GLY:O	0.71	1.85
2:A:105:HEC:HBC3	2:A:105:HEC:HMC1	0.68	1.65
1:A:20:VAL:HG23	1:A:102:THR:CA	0.67	2.20
1:A:95:ILE:HG22	1:A:96:ALA:N	0.67	2.05
1:A:38:ARG:HA	1:A:58:THR:HG23	0.65	1.68
1:A:35:LEU:CD1	1:A:36:PHE:CZ	0.65	2.80
1:A:75:ILE:O	1:A:78:THR:HG22	0.65	1.92
1:A:97:TYR:CD2	1:A:98:LEU:N	0.64	2.65
1:A:36:PHE:HE1	1:A:95:ILE:HG23	0.64	1.51
1:A:10:PHE:CB	1:A:97:TYR:CE2	0.64	2.80
1:A:97:TYR:CE2	1:A:98:LEU:HD22	0.63	2.28
1:A:64:LEU:CB	1:A:95:ILE:HD11	0.62	2.24
1:A:35:LEU:HD13	1:A:36:PHE:CZ	0.62	2.29
1:A:85:ILE:HD13	1:A:94:LEU:HD12	0.62	1.71
1:A:7:LYS:O	1:A:11:VAL:HG23	0.61	1.96
1:A:10:PHE:CZ	1:A:18:HIS:O	0.61	2.54
1:A:10:PHE:CE2	1:A:20:VAL:CG1	0.60	2.84
1:A:11:VAL:CA	1:A:15:ALA:HB2	0.59	2.26
1:A:36:PHE:CD2	1:A:99:LYS:HA	0.59	2.32
1:A:49:THR:HG23	1:A:50:ASP:N	0.59	2.13
1:A:33:HIS:O	1:A:33:HIS:CD2	0.58	2.56
1:A:64:LEU:O	1:A:66:GLU:N	0.58	2.36
1:A:20:VAL:HG11	1:A:97:TYR:OH	0.58	1.98
1:A:38:ARG:CA	1:A:58:THR:HG23	0.58	2.28
1:A:82:PHE:O	1:A:82:PHE:CD1	0.58	2.56
1:A:20:VAL:CG2	1:A:102:THR:N	0.57	2.67
1:A:97:TYR:CG	1:A:98:LEU:N	0.57	2.72
1:A:59:TRP:O	1:A:64:LEU:CD1	0.57	2.52
1:A:58:THR:O	1:A:59:TRP:CD2	0.57	2.58
1:A:35:LEU:O	1:A:36:PHE:C	0.57	2.43

Continued on next page...

Continued from previous page...

Atom-1	Atom-2	Clash(Å)	Distance(Å)
1:A:10:PHE:HD1	1:A:94:LEU:HD21	0.56	1.59
1:A:10:PHE:HB2	1:A:97:TYR:CE2	0.56	2.36
1:A:61:GLU:O	1:A:65:MET:N	0.55	2.40
1:A:59:TRP:CZ2	2:A:105:HEC:HAA1	0.55	2.36
1:A:66:GLU:O	1:A:73:LYS:CE	0.54	2.55
1:A:102:THR:CG2	1:A:102:THR:O	0.54	2.56
1:A:64:LEU:HB3	1:A:95:ILE:HD11	0.54	1.80
1:A:48:TYR:CD2	1:A:52:ASN:CG	0.54	2.81
1:A:32:LEU:HD12	1:A:35:LEU:HG	0.54	1.77
1:A:18:HIS:ND1	1:A:30:PRO:O	0.54	2.41
1:A:61:GLU:O	1:A:64:LEU:N	0.54	2.41
1:A:51:ALA:O	1:A:55:LYS:CG	0.54	2.56
1:A:7:LYS:HA	1:A:97:TYR:CE1	0.54	2.38
1:A:20:VAL:CG1	1:A:97:TYR:OH	0.53	2.56
1:A:32:LEU:HD12	1:A:35:LEU:CG	0.53	2.33
1:A:40:THR:CG2	1:A:57:ILE:O	0.53	2.56
1:A:37:GLY:O	1:A:38:ARG:CB	0.53	2.54
1:A:62:GLU:O	1:A:66:GLU:CG	0.53	2.57
1:A:61:GLU:O	1:A:62:GLU:C	0.53	2.46
1:A:49:THR:CG2	1:A:77:GLY:O	0.53	2.55
1:A:24:GLY:O	1:A:31:ASN:ND2	0.53	2.42
1:A:36:PHE:CE2	1:A:99:LYS:N	0.53	2.77
1:A:59:TRP:CE3	1:A:64:LEU:HD23	0.53	2.39
1:A:74:TYR:CD2	1:A:75:ILE:HG12	0.53	2.39
1:A:13:LYS:HB2	1:A:85:ILE:HD11	0.52	1.80
1:A:35:LEU:O	1:A:37:GLY:N	0.52	2.42
1:A:64:LEU:O	1:A:65:MET:C	0.52	2.48
1:A:67:TYR:CE2	1:A:74:TYR:CD1	0.52	2.97
1:A:72:LYS:O	1:A:76:PRO:N	0.52	2.42
1:A:85:ILE:HD13	1:A:94:LEU:CD1	0.52	2.34
1:A:34:GLY:N	1:A:42:GLN:OE1	0.52	2.42
1:A:74:TYR:CZ	1:A:75:ILE:HB	0.52	2.40
2:A:105:HEC:CGD	2:A:105:HEC:HMD1	0.52	2.35
1:A:42:GLN:NE2	2:A:105:HEC:O2A	0.52	2.43
1:A:44:PRO:HB3	1:A:53:LYS:CG	0.52	2.35
1:A:46:PHE:C	1:A:46:PHE:CD1	0.52	2.82
1:A:36:PHE:CE1	1:A:64:LEU:CD1	0.51	2.93
1:A:42:GLN:CG	1:A:48:TYR:OH	0.51	2.58
1:A:51:ALA:O	1:A:55:LYS:CB	0.51	2.57
1:A:41:GLY:CA	1:A:52:ASN:O	0.51	2.59
1:A:51:ALA:O	1:A:55:LYS:CA	0.51	2.59
1:A:35:LEU:HB3	1:A:36:PHE:CD2	0.51	2.41

Continued on next page...

Continued from previous page...

Atom-1	Atom-2	Clash(Å)	Distance(Å)
1:A:10:PHE:CD2	1:A:97:TYR:OH	0.50	2.58
2:A:105:HEC:HMB1	2:A:105:HEC:HBB3	0.50	1.81
1:A:42:GLN:O	1:A:44:PRO:HD3	0.50	2.06
1:A:26:HIS:O	1:A:27:LYS:O	0.50	2.29
1:A:46:PHE:CG	1:A:47:THR:N	0.50	2.78
1:A:67:TYR:CD2	1:A:74:TYR:CD1	0.50	2.99
1:A:7:LYS:HA	1:A:97:TYR:CD1	0.50	2.41
1:A:48:TYR:HB3	1:A:53:LYS:N	0.49	2.22
1:A:40:THR:CG2	1:A:57:ILE:C	0.49	2.81
1:A:36:PHE:CE2	1:A:99:LYS:HA	0.49	2.43
1:A:95:ILE:CG2	1:A:96:ALA:N	0.49	2.75
1:A:36:PHE:CE1	1:A:64:LEU:HD12	0.49	2.43
1:A:82:PHE:CZ	1:A:84:GLY:HA3	0.49	2.42
1:A:86:LYS:O	1:A:87:LYS:O	0.49	2.31
1:A:18:HIS:HB3	1:A:32:LEU:CD2	0.49	2.38
1:A:54:ASN:O	1:A:55:LYS:O	0.49	2.31
1:A:68:LEU:HD13	1:A:91:ARG:CB	0.49	2.37
1:A:32:LEU:CG	1:A:35:LEU:HG	0.48	2.38
1:A:48:TYR:CD2	1:A:52:ASN:OD1	0.48	2.67
1:A:64:LEU:HD12	1:A:95:ILE:HG12	0.48	1.84
1:A:95:ILE:O	1:A:96:ALA:C	0.48	2.52
1:A:65:MET:O	1:A:91:ARG:NH2	0.48	2.46
1:A:68:LEU:CD1	1:A:91:ARG:HA	0.48	2.38
1:A:13:LYS:HB3	1:A:82:PHE:CZ	0.48	2.42
1:A:12:GLN:HG3	1:A:13:LYS:N	0.48	2.23
1:A:36:PHE:CD1	1:A:59:TRP:O	0.48	2.67
1:A:59:TRP:CE3	1:A:64:LEU:CD2	0.48	2.96
1:A:16:GLN:O	1:A:28:THR:HB	0.48	2.09
1:A:67:TYR:CE1	1:A:71:PRO:HA	0.48	2.44
1:A:8:LYS:O	1:A:12:GLN:CG	0.47	2.62
1:A:67:TYR:CE2	2:A:105:HEC:C2A	0.47	2.98
1:A:20:VAL:HG13	1:A:21:GLU:H	0.47	1.69
1:A:31:ASN:ND2	1:A:33:HIS:HB2	0.47	2.24
1:A:96:ALA:O	1:A:97:TYR:C	0.47	2.52
1:A:32:LEU:CD1	1:A:35:LEU:HG	0.47	2.40
1:A:97:TYR:CE2	1:A:98:LEU:CD2	0.47	2.98
1:A:36:PHE:CE2	1:A:99:LYS:CA	0.47	2.98
1:A:40:THR:O	2:A:105:HEC:O2A	0.47	2.32
1:A:35:LEU:HD22	1:A:59:TRP:HB3	0.47	1.86
1:A:40:THR:OG1	1:A:41:GLY:N	0.47	2.46
1:A:37:GLY:O	1:A:38:ARG:HB3	0.46	2.11
1:A:67:TYR:O	1:A:68:LEU:C	0.46	2.52

Continued on next page...

Continued from previous page...

Atom-1	Atom-2	Clash(Å)	Distance(Å)
1:A:10:PHE:CE2	1:A:18:HIS:O	0.46	2.69
1:A:34:GLY:O	1:A:35:LEU:O	0.46	2.34
1:A:57:ILE:HD11	1:A:59:TRP:CZ2	0.46	2.46
1:A:72:LYS:CB	1:A:76:PRO:HA	0.46	2.40
1:A:72:LYS:O	1:A:76:PRO:CD	0.46	2.62
1:A:71:PRO:O	1:A:72:LYS:C	0.46	2.54
1:A:48:TYR:N	1:A:48:TYR:CD1	0.46	2.84
1:A:71:PRO:O	1:A:73:LYS:N	0.46	2.49
1:A:30:PRO:CG	2:A:105:HEC:C2D	0.46	2.94
1:A:66:GLU:O	1:A:73:LYS:HE3	0.45	2.11
1:A:10:PHE:CG	1:A:97:TYR:CE2	0.45	3.04
1:A:17:CYS:CA	1:A:29:GLY:HA3	0.45	2.42
1:A:20:VAL:HG21	1:A:98:LEU:HD13	0.45	1.86
1:A:35:LEU:HD12	1:A:36:PHE:CE2	0.45	2.45
1:A:59:TRP:CZ2	2:A:105:HEC:CAA	0.45	3.00
1:A:58:THR:HG22	1:A:59:TRP:H	0.45	1.71
1:A:86:LYS:HG2	1:A:86:LYS:O	0.45	2.12
1:A:49:THR:CB	1:A:77:GLY:O	0.45	2.64
1:A:82:PHE:CD1	1:A:82:PHE:C	0.45	2.89
1:A:52:ASN:O	1:A:52:ASN:ND2	0.45	2.49
1:A:74:TYR:CE1	1:A:75:ILE:HB	0.45	2.46
1:A:20:VAL:HG13	1:A:21:GLU:N	0.45	2.27
1:A:67:TYR:CZ	2:A:105:HEC:C1A	0.45	2.99
1:A:68:LEU:O	1:A:69:GLU:C	0.45	2.54
1:A:8:LYS:O	1:A:12:GLN:HG2	0.45	2.12
1:A:88:LYS:CA	1:A:91:ARG:HG3	0.45	2.42
1:A:9:ILE:HG22	1:A:85:ILE:HD13	0.44	1.89
1:A:1:GLY:O	1:A:2:ASP:OD1	0.44	2.35
1:A:68:LEU:HD13	1:A:91:ARG:HB3	0.44	1.89
1:A:59:TRP:CE2	2:A:105:HEC:HAA1	0.44	2.48
1:A:80:MET:CB	2:A:105:HEC:CHD	0.44	2.96
1:A:52:ASN:O	1:A:53:LYS:C	0.44	2.56
1:A:59:TRP:CE3	1:A:59:TRP:HA	0.44	2.48
1:A:61:GLU:O	1:A:63:THR:N	0.44	2.51
1:A:35:LEU:HB3	1:A:36:PHE:CE2	0.44	2.48
1:A:71:PRO:CG	1:A:80:MET:HE2	0.44	2.42
1:A:26:HIS:ND1	1:A:46:PHE:HB2	0.44	2.28
1:A:54:ASN:CG	1:A:54:ASN:O	0.44	2.56
1:A:20:VAL:CG2	1:A:102:THR:CA	0.43	2.95
1:A:17:CYS:O	1:A:29:GLY:HA3	0.43	2.13
1:A:40:THR:HB	1:A:59:TRP:NE1	0.43	2.28
1:A:19:THR:O	1:A:31:ASN:HB2	0.43	2.13

Continued on next page...

Continued from previous page...

Atom-1	Atom-2	Clash(Å)	Distance(Å)
1:A:64:LEU:CD2	2:A:105:HEC:CMA	0.43	2.96
1:A:48:TYR:HA	2:A:105:HEC:CGD	0.43	2.43
1:A:35:LEU:CD1	1:A:36:PHE:CE2	0.43	3.02
1:A:16:GLN:HG2	1:A:16:GLN:O	0.43	2.14
1:A:35:LEU:HD12	1:A:36:PHE:CZ	0.43	2.47
1:A:55:LYS:CE	1:A:57:ILE:HG23	0.43	2.44
1:A:5:LYS:O	1:A:9:ILE:HG12	0.43	2.14
1:A:88:LYS:O	1:A:89:THR:C	0.43	2.55
1:A:88:LYS:N	1:A:91:ARG:HG3	0.43	2.28
1:A:17:CYS:O	1:A:29:GLY:C	0.43	2.57
1:A:24:GLY:O	1:A:31:ASN:CG	0.43	2.57
1:A:60:LYS:O	1:A:64:LEU:HB2	0.43	2.13
1:A:74:TYR:O	1:A:75:ILE:HG12	0.43	2.13
1:A:68:LEU:HD22	1:A:85:ILE:O	0.43	2.14
1:A:69:GLU:CB	1:A:73:LYS:NZ	0.43	2.82
1:A:103:ASN:O	1:A:104:GLU:C	0.42	2.55
1:A:66:GLU:O	1:A:67:TYR:C	0.42	2.57
1:A:70:ASN:O	1:A:73:LYS:HB3	0.42	2.13
1:A:14:CYS:O	1:A:18:HIS:HB2	0.42	2.15
1:A:1:GLY:HA3	1:A:96:ALA:CB	0.42	2.45
1:A:75:ILE:O	1:A:75:ILE:HG22	0.42	2.13
1:A:42:GLN:NE2	1:A:48:TYR:OH	0.42	2.52
1:A:47:THR:O	1:A:48:TYR:C	0.42	2.57
1:A:12:GLN:CG	1:A:13:LYS:N	0.42	2.83
1:A:41:GLY:HA3	1:A:52:ASN:O	0.42	2.14
1:A:46:PHE:CD1	1:A:47:THR:N	0.42	2.88
1:A:102:THR:HG23	1:A:102:THR:O	0.41	2.14
1:A:64:LEU:CD1	1:A:95:ILE:HG12	0.41	2.45
1:A:18:HIS:HA	1:A:30:PRO:O	0.41	2.15
1:A:71:PRO:HG3	1:A:80:MET:CE	0.41	2.45
1:A:62:GLU:O	1:A:66:GLU:HB2	0.41	2.16
1:A:98:LEU:O	1:A:99:LYS:C	0.41	2.56
1:A:80:MET:CB	2:A:105:HEC:C1D	0.41	2.98
1:A:11:VAL:C	1:A:15:ALA:HB2	0.41	2.34
1:A:64:LEU:C	1:A:66:GLU:N	0.41	2.73
1:A:10:PHE:CE1	1:A:32:LEU:HD23	0.41	2.51
1:A:48:TYR:CG	1:A:52:ASN:OD1	0.41	2.74
1:A:51:ALA:O	1:A:55:LYS:N	0.41	2.54
1:A:67:TYR:CD1	1:A:67:TYR:C	0.41	2.95
1:A:64:LEU:O	1:A:67:TYR:N	0.41	2.54
1:A:88:LYS:HA	1:A:91:ARG:NH1	0.41	2.30
1:A:74:TYR:CE2	1:A:75:ILE:CG1	0.41	3.03

Continued on next page...

Continued from previous page...

Atom-1	Atom-2	Clash(Å)	Distance(Å)
1:A:90:GLU:O	1:A:91:ARG:C	0.40	2.57
1:A:10:PHE:CZ	1:A:18:HIS:HB3	0.40	2.52

6.3 Torsion angles [i](#)

6.3.1 Protein backbone [i](#)

In the following table, the Percentiles column shows the percent Ramachandran outliers of the chain as a percentile score with respect to all PDB entries followed by that with respect to all NMR entries. The Analysed column shows the number of residues for which the backbone conformation was analysed and the total number of residues.

Mol	Chain	Analysed	Favoured	Allowed	Outliers	Percentiles	
1	A	102/104 (98%)	55 (54%)	29 (28%)	18 (18%)	0	3
All	All	102/104 (98%)	55 (54%)	29 (28%)	18 (18%)	0	3

All 18 Ramachandran outliers are listed below. They are sorted by the frequency of occurrence in the ensemble.

Mol	Chain	Res	Type
1	A	41	GLY
1	A	71	PRO
1	A	72	LYS
1	A	87	LYS
1	A	35	LEU
1	A	57	ILE
1	A	95	ILE
1	A	46	PHE
1	A	88	LYS
1	A	51	ALA
1	A	42	GLN
1	A	27	LYS
1	A	36	PHE
1	A	23	GLY
1	A	65	MET
1	A	56	GLY
1	A	55	LYS
1	A	82	PHE

6.3.2 Protein sidechains [i](#)

In the following table, the Percentiles column shows the percent sidechain outliers of the chain as a percentile score with respect to all PDB entries followed by that with respect to all NMR entries. The Analysed column shows the number of residues for which the sidechain conformation was analysed and the total number of residues.

Mol	Chain	Analysed	Rotameric	Outliers	Percentiles	
1	A	86/86 (100%)	56 (65%)	30 (35%)	1	9
All	All	86/86 (100%)	56 (65%)	30 (35%)	1	9

All 30 residues with a non-rotameric sidechain are listed below. They are sorted by the frequency of occurrence in the ensemble.

Mol	Chain	Res	Type
1	A	14	CYS
1	A	81	ILE
1	A	94	LEU
1	A	13	LYS
1	A	95	ILE
1	A	46	PHE
1	A	63	THR
1	A	69	GLU
1	A	70	ASN
1	A	73	LYS
1	A	22	LYS
1	A	35	LEU
1	A	53	LYS
1	A	68	LEU
1	A	50	ASP
1	A	36	PHE
1	A	80	MET
1	A	2	ASP
1	A	32	LEU
1	A	42	GLN
1	A	21	GLU
1	A	28	THR
1	A	52	ASN
1	A	61	GLU
1	A	17	CYS
1	A	98	LEU
1	A	74	TYR
1	A	102	THR
1	A	97	TYR

Continued on next page...

Continued from previous page...

Mol	Chain	Res	Type
1	A	55	LYS

6.3.3 RNA [i](#)

There are no RNA molecules in this entry.

6.4 Non-standard residues in protein, DNA, RNA chains [i](#)

There are no non-standard protein/DNA/RNA residues in this entry.

6.5 Carbohydrates [i](#)

There are no carbohydrates in this entry.

LIGAND-GEOMETRY INFOmissingINFO

6.6 Other polymers [i](#)

There are no such molecules in this entry.

6.7 Polymer linkage issues [i](#)

There are no chain breaks in this entry.

7 Chemical shift validation

No chemical shift data were provided